

University of Groningen

Incidence and prevalence of vaccine preventable infections in adult patients with autoimmune inflammatory rheumatic diseases (AIIRD)

Furer, Victoria; Rondaan, Christien; Heijstek, Marloes; van Assen, Sander; Bijl, Marc; Agmon-Levin, Nancy; Breedveld, Ferdinand C.; D'Amelio, Raffaele; Dougados, Maxime; Kapetanovic, Meliha Crnkic

Published in:
BMJ Open

DOI:
[10.1136/rmdopen-2019-001041](https://doi.org/10.1136/rmdopen-2019-001041)

IMPORTANT NOTE: You are advised to consult the publisher's version (publisher's PDF) if you wish to cite from it. Please check the document version below.

Document Version
Publisher's PDF, also known as Version of record

Publication date:
2019

[Link to publication in University of Groningen/UMCG research database](#)

Citation for published version (APA):

Furer, V., Rondaan, C., Heijstek, M., van Assen, S., Bijl, M., Agmon-Levin, N., Breedveld, F. C., D'Amelio, R., Dougados, M., Kapetanovic, M. C., van Laar, J. M., de Thurah, A. L., Landewe, R., Molto, A., Mueller-Ladner, U., Schreiber, K., Smolar, L., Walker, J., Warnatz, K., ... Elkayam, O. (2019). Incidence and prevalence of vaccine preventable infections in adult patients with autoimmune inflammatory rheumatic diseases (AIIRD): a systemic literature review informing the 2019 update of the EULAR recommendations for vaccination in adult patients with AIIRD. *BMJ Open*, 5(2), [001041]. <https://doi.org/10.1136/rmdopen-2019-001041>

Copyright

Other than for strictly personal use, it is not permitted to download or to forward/distribute the text or part of it without the consent of the author(s) and/or copyright holder(s), unless the work is under an open content license (like Creative Commons).

The publication may also be distributed here under the terms of Article 25fa of the Dutch Copyright Act, indicated by the "Taverne" license. More information can be found on the University of Groningen website: <https://www.rug.nl/library/open-access/self-archiving-pure/taverne-amendment>.

Take-down policy

If you believe that this document breaches copyright please contact us providing details, and we will remove access to the work immediately and investigate your claim.

ORIGINAL ARTICLE

Incidence and prevalence of vaccine preventable infections in adult patients with autoimmune inflammatory rheumatic diseases (AIIRD): a systemic literature review informing the 2019 update of the EULAR recommendations for vaccination in adult patients with AIIRD

Victoria Furer,^{1,2} Christien Rondaan,^{3,4} Marloes Heijstek,⁵ Sander van Assen,⁶ Marc Bijl,⁷ Nancy Agmon-Levin,^{8,9} Ferdinand C Breedveld,⁹ Raffaele D'Amelio,¹⁰ Maxime Dougados,¹¹ Meliha Crnkic Kapetanovic,¹² Jacob M van Laar,¹³ Annette Ladefoged de Thurah,¹⁴ Robert Landewé,^{15,16} Anna Molto,¹¹ Ulf Müller-Ladner,¹⁷ Karen Schreiber,^{18,19} Leo Smolar,²⁰ Jim Walker,²¹ Klaus Warnatz,²² Nico M Wulffraat,²³ Ori Elkayam^{1,2}

To cite: Furer V, Rondaan C, Heijstek M, *et al.* Incidence and prevalence of vaccine preventable infections in adult patients with autoimmune inflammatory rheumatic diseases (AIIRD): a systemic literature review informing the 2019 update of the EULAR recommendations for vaccination in adult patients with AIIRD. *RMD Open* 2019;**5**:e001041. doi:10.1136/rmdopen-2019-001041

► Additional material is published online only. To view please visit the journal online (<http://dx.doi.org/10.1136/rmdopen-2019-001041>).

Received 27 June 2019
Revised 9 August 2019
Accepted 11 August 2019



© Author(s) (or their employer(s)) 2019. Re-use permitted under CC BY-NC. No commercial re-use. See rights and permissions. Published by BMJ.

For numbered affiliations see end of article.

Correspondence to

Dr Victoria Furer;
furer.rheum@gmail.com

ABSTRACT

Objectives The aims of this study were to update the evidence on the incidence and prevalence rates of vaccine preventable infections (VPI) in patients with autoimmune inflammatory rheumatic diseases (AIIRD) and compare the data to the general population when available.

Methods A literature search was performed using Medline, Embase and Cochrane library (October 2009 to August 2018). The primary outcome was the incidence or prevalence of VPI in the adult AIIRD population. Meta-analysis was performed when appropriate.

Results Sixty-three publications out of 3876 identified records met the inclusion criteria: influenza (n=4), pneumococcal disease (n=7), hepatitis B (n=10), herpes zoster (HZ) (n=29), human papillomavirus (HPV) infection (n=13). An increased incidence of influenza and pneumococcal disease was reported in patients with AIIRD. HZ infection-pooled incidence rate ratio (IRR) was 2.9 (95% CI 2.4 to 3.3) in patients with AIIRD versus general population. Among AIIRD, inflammatory myositis conferred the highest incidence rate (IR) of HZ (pooled IRR 5.1, 95% CI 4.3 to 5.9), followed by systemic lupus erythematosus (SLE) (pooled IRR 4.0, 95% CI 2.3 to 5.7) and rheumatoid arthritis (pooled IRR 2.3, 95% CI 2.1 to 2.6). HPV infection-pooled prevalence ratio was 1.6, 95% CI 0.7 to 3.4 versus general population, based on studies mainly conducted in the SLE population in Latin America and Asia. Pooled prevalence of hepatitis B surface antigen and hepatitis B core antibody in patients with AIIRD was similar to the general population, 3%, 95% CI 1% to 5% and 15%, 95% CI 7% to 26%, respectively.

Key messages

What is already known about this subject?

► The first EULAR recommendations for vaccination in adult patients with autoimmune inflammatory rheumatic diseases (AIIRD) were published in 2011, based on available literature through September 2009 and expert opinion.

What does this study add?

- Since 2009, a significant body of data has been published in the field of epidemiology of vaccine preventable infections (VPI) within AIIRD population, including influenza, pneumococcal disease, herpes zoster, hepatitis B and human papillomavirus infection.
- This systematic literature review provides an updated overview on the incidence and prevalence rates of VPI in patients with AIIRD.
- Patients with AIIRD are at increased risk of influenza, pneumococcal, herpes zoster and human papillomavirus infections, indicating the importance of their monitoring and use of vaccination to decrease the risk of these infections.

How might this impact on clinical practice?

► This systematic literature review informed the task force for the 2019 update of the EULAR recommendations for vaccination in adult patients with AIIRD.

Conclusion Current evidence shows an increased risk of VPI in patients with AIIRD, emphasising that prevention of infections is essential in these patients.

INTRODUCTION

In 2011, the first EULAR evidence-based recommendations for vaccination in adult patients with autoimmune inflammatory rheumatic diseases (AIIRDs) were published,¹ with the main goal to reduce infection-related morbidity and mortality in the AIIRD population. Despite the well-established fact of a high burden of infections among patients with AIIRD,² limited evidence was available concerning the real incidence and prevalence of vaccine preventable infections (VPIs) in this population.³ In light of the newly accrued data over the last decade, this paper presents the results of the systematic literature review (SLR) on the incidence and prevalence of VPI in adult patients with AIIRD. Together with the SLR on efficacy, immunogenicity and safety of vaccinations in patients with AIIRD,⁴ it provided the EULAR task force an evidence-based rationale for the 2019 update on the recommendations for vaccination in this population of patients.

METHODS

Literature search

A systematic literature search was conducted via Medline (Ovid), Embase (Embase.com) and Cochrane (Wiley) databases, from 1 October 2009 up to 15 August 2018. Additionally, reference lists of included studies and additional papers considered relevant in the opinion of experts were screened. For all databases, we used free text terms describing our lists of AIIRD and VPI. Additionally, we searched with the corresponding Medical Subject Headings for Medline and Embase subject heading Emtree for Embase. We used a broad filter for locating incidence and prevalence studies, adapted from a previously published systematic review.⁵ The full search strategy of all databases is documented in online supplementary file 1. We manually searched the references cited by the retrieved articles and reviewed articles for additional references.

Search strategy

Our research question was formulated according to the PICO format (**P**opulation, **I**nterventions, **C**omparators, **O**utcomes) (box 1). The population was defined as patients with AIIRD, treated or untreated with immunosuppressive drugs (table 1, supplementary file). Interventions were not applicable to our research question. The comparators were healthy individuals or the general population when the data were available. Outcomes were defined as the incidence or prevalence rates for the following vaccine preventable infectious diseases: influenza, tetanus, diphtheria, pertussis, measles, mumps, rubella, varicella, herpes zoster (HZ), human

Box 1 PICO-formulated research question.

What is the incidence or prevalence of vaccine preventable infections (VPI) in adult patients with AIIRD?

- ▶ Population: Patients with AIIRD treated or untreated with immunosuppressive drugs
- ▶ Intervention: None
- ▶ Comparison: Healthy controls or general population
- ▶ Outcome: Incidence or prevalence of vaccine-preventable infections: influenza, tetanus, diphtheria, pertussis, measles, mumps, rubella, varicella, herpes zoster, human papillomavirus infection, *Streptococcus pneumoniae* infection, hepatitis A, hepatitis B, *Neisseria meningitidis* infection, *Haemophilus influenzae* infection, tick-borne encephalitis, typhoid fever, yellow fever.

AIIRD, autoimmune inflammatory rheumatic disease(s).

papillomavirus (HPV) infection, *Streptococcus pneumoniae* infection, hepatitis A, hepatitis B, *Neisseria meningitidis* infection, *Haemophilus influenzae* infection, tick-borne encephalitis, typhoid fever, yellow fever.

Inclusion and exclusion criteria

Eligible studies were observational longitudinal studies/cohort studies, including registries and claims database studies, for the IRs and cross-sectional studies for the prevalence rates only, when the data on the disease incidence were unavailable. SLRs of cohort studies and meta-analyses were also included. For hepatitis B, only studies reporting the seroprevalence of hepatitis B surface antigen (HBsAg) and/or hepatitis B core antibody (anti-HBc) were included. Only articles in English on adult patients (≥18 years old) were included. Case-control studies, case reports, intervention studies, vaccination studies, abstracts presented in scientific meetings, in vitro and animal studies were excluded. Papers included in the previous recommendations were also excluded. Studies on patients with non-rheumatic autoimmune diseases, immunodeficiency, transplantation, atopic diseases and malignancies were excluded.

Data extraction and quality assessment

Two reviewers (OE and VF) independently screened titles and abstracts to determine eligibility for inclusion, according to the predefined inclusion criteria, followed by full-text review when necessary. Data were extracted using a standardised form and included *study characteristics*: title, authors, journal, publication year, country, study design, study period; *population characteristics*: study population (AIIRD), controls (when available), number of patients, number of controls, age, gender, ethnicity, immunosuppressive medications; *outcome definitions*: number of VPI cases, diagnostic criteria used for the diagnosis/definition of infection, IRs and IRRs with 95% CI (when available) or HRs and prevalence rates and prevalence rate ratios (for infections for which IRs were not applicable) or ORs, and the risk of complications (when reported). For studies on incidence that did not report 95% CI, we computed exact 95% CI.

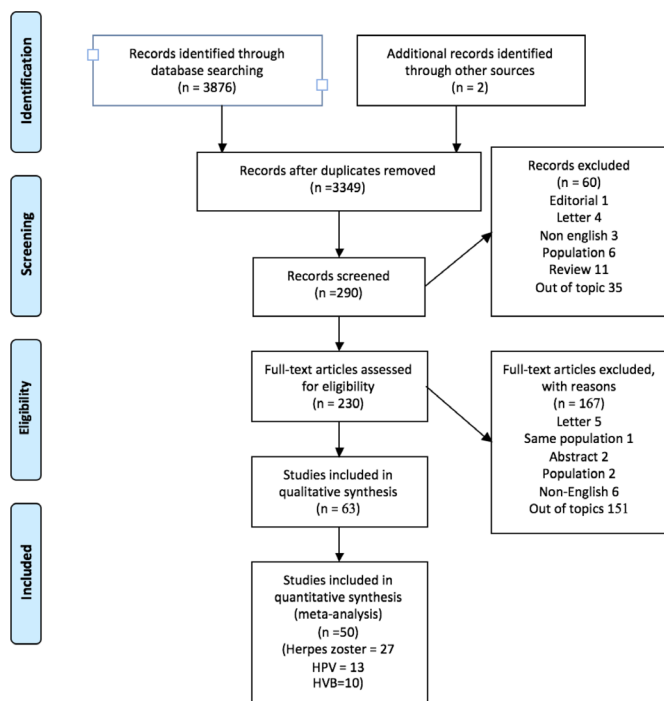


Figure 1 Flow chart of the literature search. HPV, human papillomavirus; HVB, hepatitis B virus.

Quality assessment was performed for each study based on the study design: cohort studies were assessed by a critical appraisal adjusted for the specific infection, and cross-sectional studies were assessed by the New Castle Ottawa scale,⁶ as specified in the online supplementary file 2. Based on the quality assessment, all studies were rated with a level of evidence according to the Oxford Level of Evidence.⁷ The quality assessment was used to upgrade or downgrade the level of evidence. For example, low-grade quality cohort studies were downgraded from 2b to 4. The present SLR follows the Preferred Reporting Items for Systematic Reviews and Meta-Analyses guidelines.⁸

Data analysis

Statistical analysis including meta-analysis was performed for the studies reporting on the following diseases: herpes zoster (HZ), human papillomavirus (HPV) infection and hepatitis B (HBV). For HZ, meta-analysis included the original studies that reported the incidence of HZ by disease, whereas studies that reported the incidence of HZ by treatments only were excluded. A very small number of studies in case of influenza and the use of different outcomes in studies on influenza and pneumococcal diseases precluded the performance of meta-analysis. The statistical analysis and graphical presentation were performed using Stata V.12.1 (Stata Corp, College Station, Texas, USA).

For incidence studies (HZ), the incidence rate (IR) was calculated by dividing the number of new cases by the total person time (multiplied by 1000 to present the results per 1000 person-years). The pooled IR was estimated for each type of AIIRD and overall. In addition, the incident rate ratio (IRR) was calculated for HZ

studies that compared patients with AIIRD patients with the control group. The pooled IRR was estimated for each type of AIIRD and overall.

For prevalence studies (HBV and HPV), we used the metaprop command to pool the prevalence rate for each type of AIIRD and overall. For studies that compared the prevalence with the control group, the prevalence ratio (PR) was calculated and pooled for each type of AIIRD and overall.

Heterogeneity of the studies was explored using Cochrane's Q test of heterogeneity ($p < 0.1$ considered statistically significant). Inconsistency in the studies' results was assessed by I^2 , which describes the percentage of total variation across studies that is due to heterogeneity rather than chance. When $I^2 \geq 50\%$, we assumed that there was more than moderate inconsistency. Random effects model (DerSimonian and Laird) was chosen if Cochrane's Q test $p < 0.1$ or $I^2 \geq 50\%$. Otherwise, the fixed effects model (inverse variance methods) was chosen. For quality analysis, we explored the association between the effect size (prevalence, IR, IRR and so on) and the studies quality assessment via metaregression. Sensitivity analysis for HPV included subgroup analysis with and without outlier studies. Publication bias was explored via funnel plots and the Egger test for asymmetry.

RESULTS

The literature search identified 3876 articles and two additional articles identified by experts (figure 1). After removal of duplicates, 3349 studies were screened by abstracts. A total of 230 articles underwent a full-text review. Sixty-three of these met the full inclusion criteria. Data on the incidence/prevalence rates were available for five VPI: influenza, pneumococcal disease, hepatitis B, HZ and HPV.

Influenza

Annual incidence of influenza in the general population is estimated as 5%–10% of adults, according to the WHO. One in 10 unvaccinated adults are estimated to be infected by seasonal influenza annually, with rates of symptomatic influenza roughly half of these estimates.⁹

In the 2011 review, two large cohort studies from the USA confirmed a high risk for influenza and influenza-related complications in elderly patients (≥ 65 years) with rheumatic diseases.³ In the present review, four additional studies reported on the incidence of influenza in the AIIRD population (table 1). The diagnosis of influenza was based either on the patients' reports of influenza-like illness (ILI) or International Classification of Diseases (ICD) codes.

Two studies addressed the frequency of influenza among patients with rheumatoid arthritis (RA). A large administrative study from the USA provided the most detailed data on the rates of influenza in the RA population compared with controls: influenza IRR 1.2, 95% CI 1.1 to 1.4.⁹ Influenza-related complications, including

Table 1 Influenza studies characteristics, influenza incidence rates and incidence rate ratios

| Author, Year | Country | Study design | AIIRD, Controls, Sample size | Influenza definition/ascertainment | IR AIIRD | IR Controls | IRR, 95% CI | Level of evidence |
|-------------------------------|-----------------|---------------------|--|---|--------------------|------------------|-------------------|-------------------|
| Dirven 2012 ¹¹ | The Netherlands | Cross-sectional | 879 RA | Influenza symptoms (patient-report) | 5.9% of the cohort | NA | NA | 4 |
| Blumentals 2012 ¹⁰ | USA | Cohort (Marketscan) | 46 030 RA; 46 030 controls | ICD-9 | 409.3/100 000 PY | 306.1/100 000 PY | 1.2 (1.1 to 1.4) | 2b |
| Mohammad 2017 ¹³ | Sweden | Cohort | 186 AAV; 744 age and gender-matched controls | ICD-10 | *5010/100 000 PY | *1530/100 000 PY | *3.3 (2.2 to 4.8) | 2b |
| Bello 2012 ¹² | Italy | Cross-sectional | 159 RA, PsA, AS, SpA on bDMARD | Influenza-like illness (patient-report) | 17% of the cohort | NA | NA | 4 |

*Combined incidence of influenza and pneumonia.

AAV, ANCA-associated vasculitis; AIIRD, autoimmune inflammatory rheumatic disease(s); AS, ankylosing spondylitis; bDMARD, biologic disease-modifying antirheumatic drug(s); IR, incidence ratio; IRR, incidence rate ratio; NA, non-available/non-applicable; PsA, psoriatic arthritis; PY, patient years; RA, rheumatoid arthritis; SpA, spondyloarthritis.

pneumonia, stroke and myocardial infarction, within 30 days of influenza diagnosis, were also more common in RA versus controls: IRR 1.8, 95% CI 1.2 to 2.8, translating into a 2.75-fold increase in incidence of influenza-related complications in RA.¹⁰ Complications occurred most frequently in patients aged ≥ 70 years old. Notably, concomitant disease modifying anti-rheumatic drug (DMARD) or biological use did *not* significantly affect the rate of influenza or its complications.¹⁰ A questionnaire-based study from the Netherlands reported a 5.9% incidence of ILI among patients with RA, a twofold higher rate compared with the general Dutch population.¹¹ The use anti-tumour necrosis factor (anti-TNF) therapy was associated with a higher risk of contracting influenza in this study. A questionnaire-based study from Italy reported a 17% incidence of ILI among patients with RA, psoriatic arthritis (PsA), ankylosing spondylitis (AS) and spondyloarthritis (SpA) treated with biological treatments,¹² compared with a lower incidence of influenza in the general Italian population (9.7%). Notably, no significant influenza-related morbidity or hospitalisations were reported in this study. In a Swedish cohort of ANCA-associated vasculitis (AAV), the combined incidence of influenza and pneumonia was significantly higher in patients with vasculitis compared with the general population (IRR 3.3, 95% CI 2.2 to 4.8).¹³ In summary, the present data suggest a higher risk for contracting influenza in patients with AIIRD compared with the general population.

Streptococcus pneumoniae

Pneumococcal pneumonia is the most common clinical presentation of pneumococcal disease and the most common cause of hospitalisation for community-acquired pneumonia in the adult population.^{14 15} Since 1998, the incidence of invasive pneumococcal disease (IPD) in the USA has significantly decreased from 100 to 9/100 000 persons in 2015, following the implementation of the vaccination policy for pneumococcal disease.¹⁶

In the 2011 review, four studies reported on the incidence of pneumococcal infection in patients with systemic lupus erythematosus (SLE), without comparison to the general population.³ The present literature search yielded seven retrospective cohort studies conducted in the AIIRD population in Europe and USA^{17–23} (table 2). A large study using the data from USA healthcare claims repositories (2006–2010) identified RA and SLE as risk conditions for both pneumonia and IPD in all age groups.¹⁷ Compared with healthy controls, IRR for pneumococcal pneumonia was 4.4, 95% CI 3.8 to 5.2 in patients with RA and 4.3, 95% CI 3.8 to 4.7 in patients with SLE. The highest risk for IPD was reported in young patients of age 18–49 years old, IRR 7.1, 95% CI 4.9 to 10.1.¹⁷ Another large study from the UK demonstrated that patients with AIIRD admitted to the hospital or receiving hospital-based care had an increased risk for IPD compared with controls.¹⁸ IRR for IPD was highest in SLE 5.0, 95% CI 4.6 to 5.4 and polyarteritis nodosa 5.0, 95% CI 4.0 to

Table 2 Pneumococcal disease studies characteristics, pneumococcal disease incidence rates and incidence rate ratios

| Author, Year | Country | Study design | AIIRD, Controls, Sample size | Pneumococcal disease definition/ascertainment | IR AIIRD (100,000 PY) | IR Controls (100,000 PY) | IRR, 95% CI | LoE |
|------------------------------|-------------|--|--|--|--|---|---|-----|
| Shea 2014 ¹⁷ | USA | Retrospective cohort (three integrated healthcare claims repositories) | RA, SLE, Crohn's disease, healthy controls (sample size NA) | Pneumonia and IPD/ICD-9 | 18-49 y - 13.0 50-64 y - 21.1 ≥65 y - 33.3 | 18-49 y - 1.8 50-64 y - 4.5 ≥65 y - 8.3 | <i>Pneumonia</i> : 18 to 49 y - 4.4 (3.8 to 5.2) 50 to 64 y - 4.3 (3.8 to 4.7) ≥65 y - 4.0 (3.6 to 4.4) <i>IPD</i> : 18 to 49 y - 7.1 (4.9 to 10.1) 50 to 64 y - 4.7 (3.7 to 6) ≥65 y - 4 (3.0 to 5.3) | 2b |
| Wotton 2012 ¹⁸ | UK | Retrospective cohort (English national linked Hospital Episode Statistics (1999-2008)) | RA 247 414 AS 20 569 SLE 20 005 Sjögren 12 002 SSc 9308 DM/PM 5223 PAN 1839 Immunocompetent controls (sample size of controls NA) | Pneumonia, IPD, pneumococcal meningitis/ICD-10 | NA | NA | RA 2.5 (2.4 to 2.5) AS 2.5 (2.3 to 2.8) SLE 5.0 (4.6 to 5.4) Sjögren 3.2 (2.9 to 3.5) SSc 4.2 (3.8 to 4.7) DM/PM 3.9 (3.4 to 4.5) PAN 5.0 (4.0 to 6.0) | 4 |
| Luijten 2014 ²⁰ | Netherlands | Retrospective cohort | 260 SLE | Pneumonia leading to hospitalisation/ medical records+positive cx for <i>S. pneumoniae</i> | 201 | NA | NA | 2b |
| Schurder 2018 ²¹ | France | Retrospective cohort | 190 SLE | Pneumonia leading to hospitalisation: positive cx for <i>S. pneumoniae</i> or pneumococcal Ag in urine | 236 | NA | NA | 2b |
| Shigayeva 2016 ¹⁹ | Canada | Population-based surveillance for IPD | 20 427 AIIRD (SLE, SSc, Sjögren, PM/DM); 3 973 048 controls | IPD/Clinical diagnosis and positive cx for <i>S. pneumoniae</i> | 20 | 4.8 | NA | 2b |
| Bachkhaus 2016 ²³ | Sweden | Retrospective cohort | 8500 RA, 830 SLE; controls (sample size NA) | IPD/Clinical diagnosis and positive cx for <i>S. pneumoniae</i> | RA - 72 SLE - 213 | NA | RA 4.9 (3.9 to 6.1) SLE 14.2 (9.6 to 21.3) | 2b |
| Weycker 2016 ²² | USA | Retrospective cohort USA (healthcare database claims repositories) | RA, SLE (sample size NA) | IPD/inpatients - ICD-9; outpatients - ICD-9 + HCPCS/NDC codes for antibiotic therapy | 18-64 y - 17.8 ≥65 y - 33.3 | 18-64 y - 2.7 ≥65 y - 8.3 | 18 to 64 y - 6.6 (5.4 to 8.0) ≥65 y - 4 (4.0 to 5.3) | 2b |

Ag, antigen; AIIRD, autoimmune inflammatory rheumatic disease(s); AS, ankylosing spondylitis; cx, culture; DM, dermatomyositis; GCA, giant cell arteritis; HCPCS/NDC, Healthcare Common Procedure Coding System/ National Drug Codes; IR, incidence rate; IRR, incidence rate ratio; LoE, level of evidence; NA, non-available/non-applicable; PAN, polyarthritis nodosa; PM, polymyositis; PsA, psoriatic arthritis; PY, patient years; RA, rheumatoid arthritis; SLE, systemic lupus erythematosus; SSc, systemic sclerosis; y, years.

6.0, followed by systemic sclerosis (SSc) 4.2, 95% CI 3.8 to 4.7, Sjögren's syndrome 3.2, 95% CI 2.9 to 3.5, and the lowest in RA 2.5, 95% CI 2.4 to 2.5.¹⁸ Consistently, data from a Canadian population-based surveillance for IPD showed a substantially increased incidence rate of IPD among patients with SLE, SSc, Sjögren's syndrome and dermatomyositis/polymyositis (DM/PM) during 1995–2012.¹⁹ Two studies focusing in particular on patients with SLE have confirmed the previously reported notion of a substantially high risk of pneumococcal pneumonia and IPD in this susceptible population.^{20–21} Moreover, case-fatality ratio related to IPD in patients with SLE was higher compared with immunocompetent controls, OR 1.3, 95% CI 0.4 to 4.8.¹⁹ In summary, the rates of pneumococcal disease are significantly higher in patients with AIIRD compared with immunocompetent controls.²² Patients with SLE, including young patients, are particularly at increased risk for pneumococcal disease, with a more complicated course.²³

Herpes zoster (HZ)

The lifetime risk of developing HZ in the general population is between 25% and 30%, rising to 50% in those aged at least 80 years. The estimated average overall incidence of HZ is about 3.4–4.8/1000 person years, increasing to more than 11/1000 person years in those aged ≥ 80 years.²⁴

In the 2011 review,³ the incidence of HZ in RA ranged from 0.55 to 14.5/1000 person years in different studies. RA per se and the use of steroids, conventional synthetic DMARDs (csDMARDs) and anti-TNF therapies were identified as predisposing factors to develop HZ. In SLE, a significantly increased incidence of HZ was consistently reported, ranging from 16 to 91.5/1000 person years. The increased risk of HZ among patients with SLE was estimated as fivefold to 16-fold compared with the general population and as threefold compared with other musculoskeletal disorders. Immunosuppressive therapies were associated with the increased risk of HZ in SLE. Increased incidence of HZ was also observed in systemic vasculitis and PM/DM.³

The present review has contributed 29 studies,^{25–51} among them 2 meta-analyses,^{52–53} expanding the data on the incidence of HZ in AIIRD (table 3). Eleven studies included a control group.^{25–28–34–39–40–44–46–49–51} Based on the analysis of 21 studies including 894 891 patients, pooled IR and pooled IRR were calculated for patients with AIIRD in general and for specific disease subtypes (figure 2; supplementary file table 1). In comparison to the general population, the risk of HZ infection in the AIIRD population was increased, pooled IRR 2.9, 95% CI 2.4 to 3.3, based on 11 studies, n=762 553 patients. The results of the studies were heterogeneous as reflected by Q test ($p < 0.1$), except for studies in DM with a low heterogeneity (Q test $p = 0.6$). Publication bias assessed by funnel plots of the IR and IRR (online supplementary figure 1) showed an asymmetric distribution of the results, whereas Egger's meta-regression tests with

quantitative and descriptive p values were non-significant ($p > 0.1$).

In RA,^{25–40} the incidence of HZ ranged from 6.7 to 21.3/1000 person years, with the highest incidence observed in the elderly patients.³⁴ The risk of HZ infection among patients with RA was estimated to be twofold compared with the healthy population within the same age range. Among patients with RA, the pooled IR (based on nine studies, n=726 711 patients with RA) was 11.6/1000 person years, 95% CI 9.4 to 13.9 vs 6.5, 95% CI 4.7 to 8.2/1000 person years among controls (based on four studies, n=473 406 controls); the pooled IRR 2.3, 95% CI 2.1 to 2.6 based on four studies (85 419 patients with RA and 473 406 controls). A meta-analysis of five studies further confirmed the increased risk of HZ in patients with RA, pooled IRR of 1.7, 95% CI 1.4 to 2.0.⁵³

The rates of HZ-related complications were reported by a number of studies.^{25–27–29–37–38–40} Overall, the rate of disseminated disease and HZ-related hospitalisation was low. The IR of disseminated HZ ranged from 0.2, CI 95% 0.1 to 0.6/1000 person years in a Japanese study⁴⁰ to 3, CI 95% 2 to 4/1000 person years in a pooled analysis of patients with RA exposed to tofacitinib in clinical trials.³⁸ Importantly, a study from Taiwan reported an increased risk of stroke in patients with RA with HZ compared with patients with RA without HZ (adjusted hazard rate (aHR) 1.3, $p = 0.047$), particularly in those with HZ-related neurological complications (aHR 1.5, $p = 0.015$).³⁹ The following risk factors for HZ infection in RA were identified: old age, high disease activity and dose-related use of glucocorticoids (GCs).^{25–26–29–30–32–37–54} No clear association between the use of MTX and HZ infections in RA was established.⁵⁵ The role of anti-TNF and other biological therapies regarding the contribution to HZ risk in RA remains *controversial*. Some studies reported that treatment with anti-TNF agents significantly increased the risk of HZ compared with csDMARDs^{27–31–37–52} and was associated with more severe HZ disease.^{27–54} Others reported a similar risk of HZ in patients with RA treated with different csDMARDs and biologic DMARDs.^{29–30–32–33–40–56} The use of an anti-JAK inhibitor, tofacitinib, doubled the risk of HZ in RA compared with other biologics.^{35–54} Similarly to tofacitinib, baricitinib was also associated with a particular increased risk of HZ, which served the main reason for the treatment discontinuation in a clinical trial.⁵⁷

In SLE, the incidence of HZ ranged from 6.4 to 37.7/1000 person years^{28–34–43–45} and was estimated two fold to 10-fold higher compared with the general population.^{28–43–45} The pooled IR of HZ infection was 18.9, 95% CI 8.1 to 29.6/1000 person years in SLE vs 5.1, 95% CI 4.5 to 5.6/1000 person years in controls. The pooled was IRR 4.0, 95% CI 2.3 to 5.7, based on three studies including 155 959 patients and 51 087 635 controls. Another meta-analysis of four studies confirmed the increased risk of HZ in patients with SLE: pooled RR of 2.1, 95% CI 1.4 to 3.2.⁵³ Importantly, patients with SLE aged 18–30 years had the highest risk for HZ infection compared with older patients with

Table 3 HZ studies characteristics and HZ incidence rate (IR), incidence rate ratio (IRR) and HR according to AIIRD

| Author, Year | Country | Study design | AIIRD, Controls, Sample size | HZ diagnosis / ascertainment | Incidence/1000 PY (95% CI) AIIRD | Incidence/1000 PY (95% CI) Controls | IRR (95% CI) or HR (95% CI) | LoE |
|------------------------------|-----------|--|---------------------------------------|--|---|---|--|-----|
| Rheumatoid arthritis | | | | | | | | |
| Galloway 2013 ²⁷ | UK | Prospective cohort (BSRBR) | 15554 RA; 3673nbDMARD; 11881 TNFi | Patient and/or physician report confirmed by medical records | TNFi 16 (1.3 to 2.0); nbDMARD 8 (0.6 to 1.1) | NA | NA | 2b |
| Veetil 2013 ²⁵ | USA | Retrospective, population-based cohort | 830 RA 830 Controls | ICD-9 confirmed by medical records | 12.1 (9.6 to 14.9) | 5.4 (3.9 to 7.2) | HR 2.4 (1.7 to 3.5) | 2b |
| Widdfield 2013 ²⁶ | Canada | Retrospective, population-based cohort | 86039 RA | ICD-9 or ICD-10 | 8.5 (8.3 to 8.8) | NA | NA | 2b |
| Winthrop 2013 ²⁹ | USA | Cohort (data claim) | 36212 RA; 11828 nbDMARD 24384 TNFi | ICD-9 and use of antiviral medication within 30 days of the code | csDMARD: 12.7 (10.3 to 15.6) TNFi: 12.1 (10.7 to 13.6) | NA | NA | 2b |
| Che 2014 ⁵² | Global | Systematic literature review and meta-analysis | 163077 RA patient years | NA | NA | NA | Pooled risk ratio 1.6 (1.2 to 2.2) | 2a |
| Chen SY 2014 ²⁸ | USA | Cohort (data claim) | 571555 RA | ICD-9 | 12.2 (12.0 to 12.5) | 4.8 (4.8 to 4.8) | IRR/Comparison by age groups (yo): 50 to 59 vs 18 to 49 1.5 (1.5 to 1.6) 60 to 64 vs 18 to 49 1.8 (1.7 to 2.0) ≥65 vs 18 to 49 2.2 (2.1 to 2.3) | 2b |
| Nakajima 2015 ³⁰ | Japan | Cohort | 7986 RA | Patient report confirmed by medical records | 9.1 (6.2 to 12.9) | NA | NA | 2b |
| Segan 2015 ³¹ | Australia | Cohort (survey) | 1870 RA | Patient report confirmed by physician | 15.9 (13.5 to 18.8) | NA | NA | 4 |
| Pappas 2015 ³² | USA | Cohort (CORRONA) | 28852 RA | Rheumatologist report | 7.7 (7.1 to 8.2) | NA | NA | 2b |
| Yun 2015 ³³ | USA | Cohort (data claim) | 29129 RA (bDMARD only) | ICD-9 and claim for an antiviral medication within 30 days of the code | Range by specific drug: 16.1 (8.9 to 29.1) – 24.5 (15.7 to 38.5) | NA | NA | 2b |
| Yun 2016 ³⁴ | USA | Cohort (data claim) | 50268 RA 328580 controls | ICD-9 | Range by age groups: 6.6 to 21.3 (CI NA) | 5.3 range by age groups: 2.7 to 10.6 (CI NA) | NA | 2b |
| Curtis 2016 ³⁵ | USA | Cohort (data claim) | 69726 RA (bDMARD or tofacitinib only) | ICD-9 and antiviral drugs within 7 days of the diagnosis code | Range by specific drug: 4.79 (4.3 to 5.3) – 7.61 (6.1 to 9.6) | NA | NA | 2b |

Continued

| Table 3 Continued | | | | | | | | |
|---|---------|--|--|--|---|--|------------------------------------|-----|
| Author, Year | Country | Study design | AIIRD, Controls, Sample size | HZ diagnosis / ascertainment | Incidence/ 1000 PY (95% CI) AIIRD | Incidence/ 1000 PY (95% CI) Controls | IRR (95% CI) or HR (95% CI) | LoE |
| Burmester 2017 ³⁶ | Global | Cohort (pooled analysis of RCT and extension studies of adalimumab) | 15 152 RA (treated with adalimumab) | Adverse event as reported in clinical trials | 17 (CI NA) | NA | NA | 2b |
| Harada 2017 ³⁷ | Japan | Cohort (REAL database) | 1987 RA | Medical records and antiviral medication use | 6.7 (4.9 to 8.8) | NA | NA | 2b |
| Cohen 2017 ³⁸ | Global | Cohort (pooled analysis of RCT and extension studies of tofacitinib) | 6194 RA | Adverse event as reported in clinical trials | 39.0 (36.0 to 42.0) | NA | NA | 2b |
| Liao 2017 ³⁹ | Taiwan | Retrospective, population- based cohort | 27 609 RA 110 436 controls | ICD-9 | 18.3 (CI NA) | 7.2 (CI NA) | HR: 2.5 (2.4 to 2.7) | 2b |
| Kawai 2017 ⁵³ | Global | SLR and meta-analysis | RA | NA | NA | NA | Pooled risk ratio 1.7 (1.4 to 2.0) | 2a |
| Sakai 2017 ⁴⁰ | Japan | Cohort (data claim) | 6712 RA 33 560 controls | ICD-10 and antiviral medication use | 14.2 (11.1 to 14.9) | 8.3 (7.6 to 9.0) | IRR: 1.7 (1.5 to 2.0) | 2b |
| Psoriatic Arthritis | | | | | | | | |
| Zisman 2016 ⁴¹ | Israel | Cohort (data claim) | 3131 PsA | ICD-9 and antiviral medication use (≥5 days course) | 9.06 (7.8 to 10.5) | NA | NA | 2b |
| Yun 2016 ³⁴ | USA | Cohort (data claim) | 2609 PsA 328 580 controls | ICD-9 | Range by age groups: 8.5 to 19.4 (CI NA) | 5.3 (range by age groups: 2.7 to 10.6) (CI NA) | NA | 2b |
| Ankylosing spondylitis | | | | | | | | |
| Yun 2016 ³⁴ | USA | Cohort (data claim) | 1011 AS 328 580 controls | ICD-9 | Range by age groups: 5.1 to 26.3 (CI NA) | 5.3 (range by age groups: 2.7 to 10.6) (CI NA) | NA | 2b |
| Lim 2018 ⁴² | Korea | Cohort (data claim) | 1079 AS | ICD-10 and antiviral medication use at the same time | 11 (8.2 to 14.3) | NA | NA | 2b |
| Psoriatic arthritis, psoriasis, ankylosing spondylitis | | | | | | | | |
| Winthrop 2013 ²⁹ | USA | Cohort (data claim) | 12 137 PsA, psoriasis, AS (7047 csDMARD, 5090 TNFi) | ICD-9 and use of antiviral medication within 30 days of the code | csDMARDs: 6.9 (4.7 to 10.0) TNFi: 4.4 (2.8 to 7.0) | NA | NA | 2b |
| Systemic lupus erythematosus | | | | | | | | |
| Borba 2010 ⁴³ | Brazil | Cohort | 1145 SLE | Clinical diagnosis | 6.4 (CI NA) | NA | NA | 2b |

Continued

Table 3 Continued

| Author, Year | Country | Study design | AIIRD, Controls, Sample size | HZ diagnosis / ascertainment | Incidence/ 1000 PY (95% CI) AIIRD | Incidence/ 1000 PY (95% CI) Controls | IRR (95% CI) or HR (95% CI) | LoE |
|-------------------------------------|---------|--|--------------------------------|---|---|---|---|-----|
| Chen HH 2011 ⁴⁴ | Taiwan | Retrospective, population- based cohort | 10337 SLE 62022 controls | ICD-9 | 37.7 (25.5 to 40.0) | 5.1 (4.8 to 5.4) | IRR: 2.5 (1.8 to 3.4) | 2b |
| Chakravarty 2013 ⁴⁵ | USA | Cohort (National Data Bank for Rheumatic Diseases) | 1485 SLE 2775 controls | Patient report | 16.2 (12.4 to 21.1) | 10.7 (7.6 to 15) | HR 1.7 (1.1 to 2.7) | 2b |
| Chen SY 2014 ²⁸ | USA | Cohort (data claim) | 144137 SLE | ICD-9 | 15.2 (14.7 to 15.7) | 4.8 (4.8 to 4.8) | IRR/Comparison by age groups (yo): 50 to 59 vs 18 to 49 2 (1.1 to 1.2) 60 to 64 vs 18 to 49 1.5 (1.3 to 1.7) ≥65 vs 18 to 49 1.8 (1.6 to 2.0) | 2b |
| Kawai 2017 ⁵³ | Global | SLR and meta-analysis | SLE | NA | NA | NA | pooled risk ratio 2.10 (1.4 to 3.2) | 2a |
| Yun 2016 ³⁴ | USA | Cohort (data claim) | 8395 SLE 328580 controls | ICD-9 | 19.9 (range by age groups: 15.2 to 24.6) (CI NA) | 5.3 (range by age groups: 2.7 to 10.6) (CI NA) | NA | 2b |
| Sjögren | | | | | | | | |
| Chen JY 2015 ⁴⁶ | Taiwan | Retrospective, population- based cohort | 4287 Sjögren 25722 controls | ICD-9 | 18.74 (CI NA) | 8.55 (CI NA) | HR 1.7 (1.5 to 1.9) | 2b |
| Polymyositis/Dermatomyositis | | | | | | | | |
| Fardet 2009 ⁴⁷ | France | Retrospective inception cohort | 121 DM | Physician report | 33 (CI NA) | NA | NA | 4 |
| Marie 2011 ⁴⁸ | France | Cohort | 279 PM/DM | Medical records | 33 (CI NA) | NA | NA | 4 |
| Tsai 2015 ⁴⁹ | Taiwan | Retrospective, population- based cohort | 2023 PM/DM 7409 controls | ICD-9 | 35.8 (CI NA) | 7.01 (CI NA) | HR 3.9 (3.2 to 4.8) | 2b |
| Robinson 2016 ⁵⁰ | USA | Retrospective cohort | 103 DM 152 controls | Medical records confirmed by dermatologist | 55.4 (CI NA) | 3.9 (CI NA) | NA | 2b |
| Giant cell arteritis | | | | | | | | |
| Schafer 2010 ⁵¹ | USA | Cohort (data claim) | 204 GCA 407 controls | Healthcare provider report, ICD-9 code confirmed by medical records | Range by age groups: 11.3 to 14 (CI NA) | Range by age groups: 4.6 to 12.1 (CI NA) | HR 1.22 (0.7 to 2.1) | 2b |

AIIRD, autoimmune inflammatory rheumatic disease(s); BSRBR, The British Society for Rheumatology Biologics Register; CORRONA, The Consortium of Rheumatology Researchers of North America; DM, dermatomyositis; GCA, giant cell arteritis; IR, incidence ratio; IRR, incidence rate ratio; LoE, level of evidence; NA, non-available/non-applicable; nbdMARD, non-biologic disease modifying anti-rheumatic drug; PM, polymyositis; PsA, psoriatic arthritis; RA, rheumatoid arthritis; RCT, randomised controlled trial; SLE, systemic lupus erythematosus; SSC, systemic sclerosis; TNFi, tumour necrosis factor inhibitor(s).

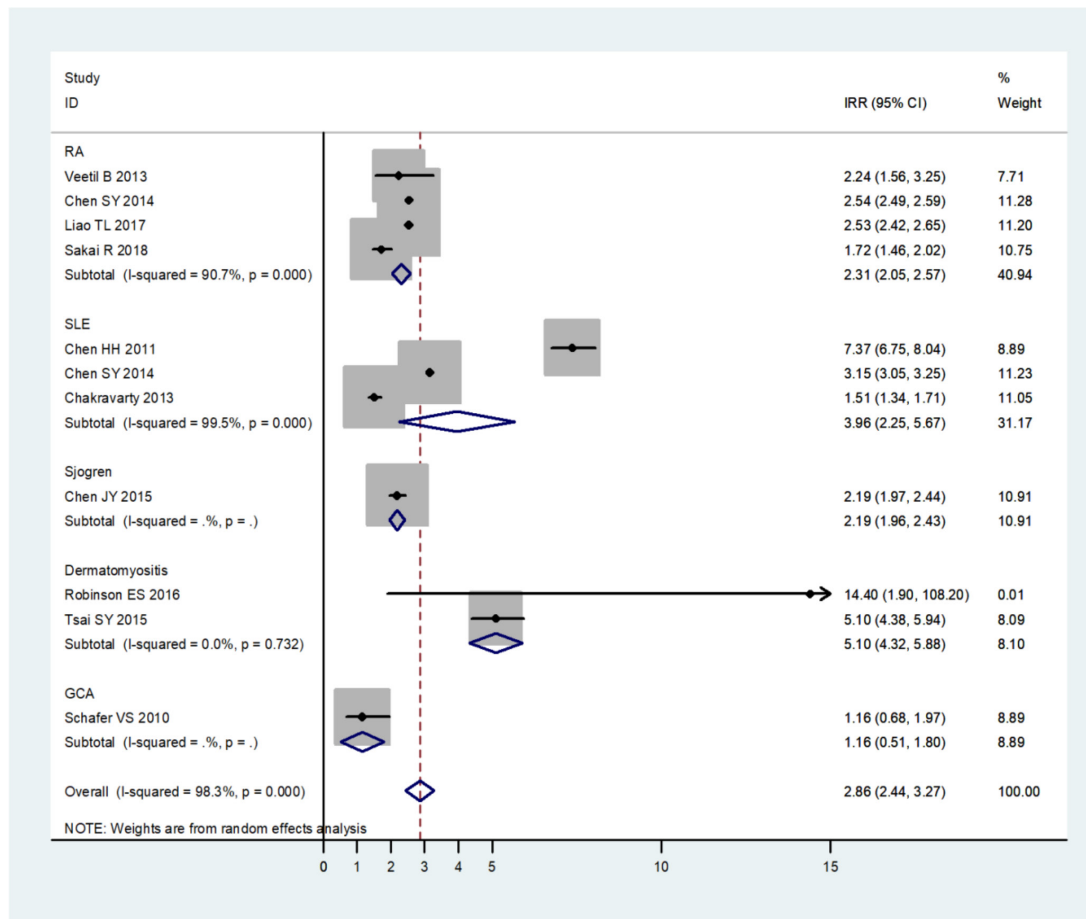


Figure 2 Forest plot of the meta-analysis of pooled incidence rate ratios (IRRs) of herpes zoster in patients with autoimmune inflammatory rheumatic diseases compared with the general population. GCA, giant cell arteritis; RA, rheumatoid arthritis; SLE, systemic lupus erythematosus.

SLE.^{34 44} Risk factors for HZ in the SLE populations mainly included use of GCs and immunosuppressive therapy in a dose-dependent manner.^{28 43 45 58} Notably, the new pipeline medications for SLE including anti-interferon- α antibodies, anifrolumab⁵⁹ and sifalimumab,⁶⁰ also seem to contribute to the increased risk of HZ. To underline the burden of HZ in patients with SLE, a trend for increased hospitalisation rates due to HZ in SLE versus non-SLE patients was observed over the last decade.⁶¹

Among other AIIRD, a particularly high incidence of HZ was reported in patients with DM and PM compared with controls with a pooled IRR 5.1, 95% CI 4.3 to 5.9/1000 person years.^{47–50} These studies were notable for a low heterogeneity (Q test p 0.6). Patients with primary Sjögren⁴⁶ and giant cell arteritis⁵¹ also had a high risk to contract HZ, as reflected by a single study for each disease group. In summary, the present review demonstrates an increased risk of HZ infection in patients with AIIRD compared with the general population, with the highest risk in patients with inflammatory myositis and GCA, followed by SLE and RA.

Human papillomavirus (HPV)

The global prevalence of HPV infection is estimated as 11.7%, 95% CI 11.6 to 11.7, with considerable regional

differences, with higher rates reported in sub-Saharan Africa (24%), Eastern Europe (21%) and Latin America (16%).⁶² The highest HPV prevalence is observed at young ages, peaking in women younger than 25 years (24.0%; 23.5 to 24.5), then declining in older ages.⁶² The majority of HPV infections (70%–90%) are asymptomatic and transient, resolving spontaneously in 1–2 years. Certain HPV serotypes ('high-risk') are responsible for cervical dysplasia, premalignant abnormalities and cervical cancer. HPV16 is the most frequent oncogenic type, followed by HPV18, HPV52, HPV31 and HPV58.⁶³

In the 2011 review,³ five studies reported on the increased prevalence of HPV cervical infection in female patients with SLE compared with the general population.^{64 65} The present review has significantly expanded the knowledge on the genital HPV infection in SLE (n=11),^{66–76} RA (n=2)^{69 77} and SSc (n=1), including 1313 patients altogether⁷⁸ (table 4). Most studies on the SLE population were conducted in Latin America (n=9), followed by Asia (n=2). The HPV prevalence mainly ranged from 12% to 30% of HPV in patients with SLE, with two exceptions: a negligible prevalence in a small group of patients with SLE in Egypt⁷³ and a strikingly high prevalence in a Brazilian SLE cohort.⁷⁰ The authors

Table 4 Genital human papillomavirus (HPV) infection studies characteristics and HPV incidence/prevalence rates

| Author, Year | Country | Study design | Study outcome | AIIRD, Controls, Sample size | HPV definition /ascertainment | Incidence or prevalence, AIIRD | Incidence or prevalence, Controls | OR (95% CI) of HPV in SLE vs controls | LoE |
|------------------------------------|------------------|---------------------|-----------------------|------------------------------|---|--|-----------------------------------|---------------------------------------|-----|
| Klumb 2010 ⁶⁶ | Brazil | Cross-sectional | Prevalence | 173 SLE, 216 controls | Cervical smear/HPV DNA PCR | 20% | 7.3% | NA | 3b |
| Tam 2010 ⁶⁷ | Hong Kong, China | Cohort (3-year f/u) | Prevalence, incidence | 150 SLE | Cervical smear/HPV DNA PCR | Prevalence: Baseline: 12.5% 3-year f/u: 25% Incidence of new HPV: 17/1000 patient months | NA | NA | 2b |
| Lee 2010 ⁶⁸ | Korea | Cross-sectional | Prevalence | 134 SLE, 4595 controls | Cervical smear/Hybrid Capture II technology or HPV PCR DNA; cervical cytology | 24.6% | 7.9% | OR 3.8 (2.5 to 5.7) | 3b |
| Rojo-Contreras 2012 ⁶⁹ | Mexico | Cross-sectional | Prevalence | 43 RA, 34 SLE, 146 controls | Cervical smear/HPV DNA PCR | RA: 27.9% SLE: 14.7% | 30.8% | NA | 3b |
| Lyrio 2013 ⁷⁰ | Brazil | Cross-sectional | Prevalence | 88 SLE, 70 controls | Cervical smear/HPV nested DNA PCR | 80.7% | 35.7% | OR 7.2 (2.9 to 17.8) | 3b |
| Mendoza-Pinto 2013 ⁷¹ | Mexico | Cross-sectional | Prevalence | 148 SLE | Cervical smear/HPV DNA PCR | 29% | NA | NA | 3b |
| García-Carrasco 2015 ⁷² | Mexico | Cross-sectional | Prevalence | 67 SLE | Cervical smear/HPV DNA PCR | 28.4% | NA | NA | 3b |
| Al-Sherbeni 2015 ⁷³ | Egypt | Cross-sectional | Prevalence | 32 SLE, 20 controls | Cervical smear/Immunostaining with HPV antibody | 3.1% | 0 | NA | 3b |
| Mendoza-Pinto 2017 ⁷⁴ | Mexico | Cohort (3-year f/u) | Prevalence, incidence | 127 SLE | Cervical smear/HPV DNA PCR | Prevalence: 22.8 Incidence: 10.1/1000 patient months | NA | NA | 2b |
| Amara 2017 ⁷⁵ | Brazil | Cross-sectional | Prevalence | 70 SLE | Cervical smear/HPV DNA PCR | 22.8% | NA | NA | 3b |

Continued

Table 4 Continued

| Author, Year | Country | Study design | Study outcome | AIIRD, Controls, Sample size | HPV definition /ascertainment | Incidence or prevalence, AIIRD | Incidence or prevalence, Controls | OR (95% CI) of HPV in SLE vs controls | LoE |
|------------------------------------|---------|---------------------|-----------------------|------------------------------|--|--|-----------------------------------|---------------------------------------|-----|
| Méndez-Martínez 2018 ⁷⁶ | Mexico | Cohort (2-year f/u) | Prevalence, Incidence | 148 SLE | Cervical smear/HPV DNA (method not specified); cervical cytology | Prevalence: 29% Incidence of new infection: 13.2% | NA | NA | 2b |
| Waisberg 2015 ⁷⁷ | Brazil | Cross-sectional | Prevalence | 50 RA 50 controls | Cervical smear/HPV DNA Hybrid Capture technology; cervical cytology | 14% | 30% | NA | 3b |
| Martin 2014 ⁷⁸ | France | Cross-sectional | Prevalence | 25 SSC 50 controls | Cervical smear/HPV DNA PCR and serum antibodies against HPV16 and 18 | 32% | 38% | NA | 3b |

AIIRD, autoimmune inflammatory rheumatic disease(s); f/u, follow-up; LoE, level of evidence; NA, non-available/non-applicable; RA, rheumatoid arthritis; SLE, systemic lupus erythematosus; SSC, systemic sclerosis.

suggested that using a very sensitive technique of PCR (n-PCR) might have resulted in a significant increase in the detection of the virus.⁷⁰ Seven studies also reported the prevalence of cervical dysplasia, including the high-grade squamous intraepithelial lesions (HGSILs).^{67-70 72 76 77} The pooled prevalence of HPV and pooled prevalence and prevalence ratios of HPV, high-risk HPV and HGSIL are summarised in table 2 in the supplementary file and depicted in figure 3. Most studies were heterogeneous as estimated by the Q test, with the exception of data on HGSIL. For publication bias assessment, a funnel plot of the prevalence of HPV, high-risk HPV and HGSIL was depicted (figure 2 in supplementary file), with Egger's meta-regression tests with quantitative and descriptive p values being non-significant (p>0.1).

A limited number of studies included a control group, reporting a higher prevalence of HPV in SLE compared with controls in two studies^{66 68} and the opposite in a small Mexican cohort.⁶⁹ Compared with the general population, pooled prevalence ratio of HPV in SLE patients was 1.6, 95% CI 0.7 to 3.4. Excluding the study by Rojo-Contreras *et al*,⁶⁹ with an exceptionally high background HPV prevalence in the control group, from the analysis resulted in a statistically significant pooled PR for SLE – 2.4, 95% CI 1.8 to 3.2.

In patients with RA, no difference in the prevalence of HPV was found between patients and controls (pooled PR 0.7, 95% CI 0.5 to 1.1). Furthermore, important information on HPV persistence, clearance and incidence of de novo infection was obtained from cohort studies (n=3) of patients with SLE with a follow-up to 3 years.^{67 74 76} In one study, the cumulative prevalence of HPV infection and specifically high-risk HPV infection significantly increased from 12.5% to 25.0% after 3 years (p=0.006) and from 11.1% to 20.8% after 3 years (p=0.02), respectively.⁶⁷ Overall, 90.6% of the preexisting infection and 14.7% of the incident infections were cleared,⁶⁷ consistent with a high clearance rate of 88.6% in another study.⁷⁴ The rate of acquisition of a new HPV infection was about 13%.⁷⁶ Risk factors for HPV infection among patients with SLE were similar to the general population, including multiple sexual partners,⁷⁴ previous HPV infection, previous sexually transmitted disease⁶⁶ and younger age.⁷¹ The presence of SLE itself was found as an independent predictor for HPV infection,⁷⁰ and a risk factor for high-risk HPV types.⁶⁸ The impact of immunosuppressive therapy on the increased prevalence of HPV remains controversial, with some data supporting a causal relation, especially related to a high cumulative dose of corticosteroids, azathioprine and cyclophosphamide exposure.^{66 69 71 74}

In RA, a lower prevalence of HPV infection was observed in pre-anti-TNF-treated patients compared with controls (14% vs 30 %, p=0.054).⁷⁷ Treatment with anti-TNF (for 6 months) did not increase a risk of exacerbation and/or progression of HPV in this small cohort.⁷⁷ In a small study of patients with SSc (n=25, 80% limited SSc), the prevalence of HPV was similar in patients and controls

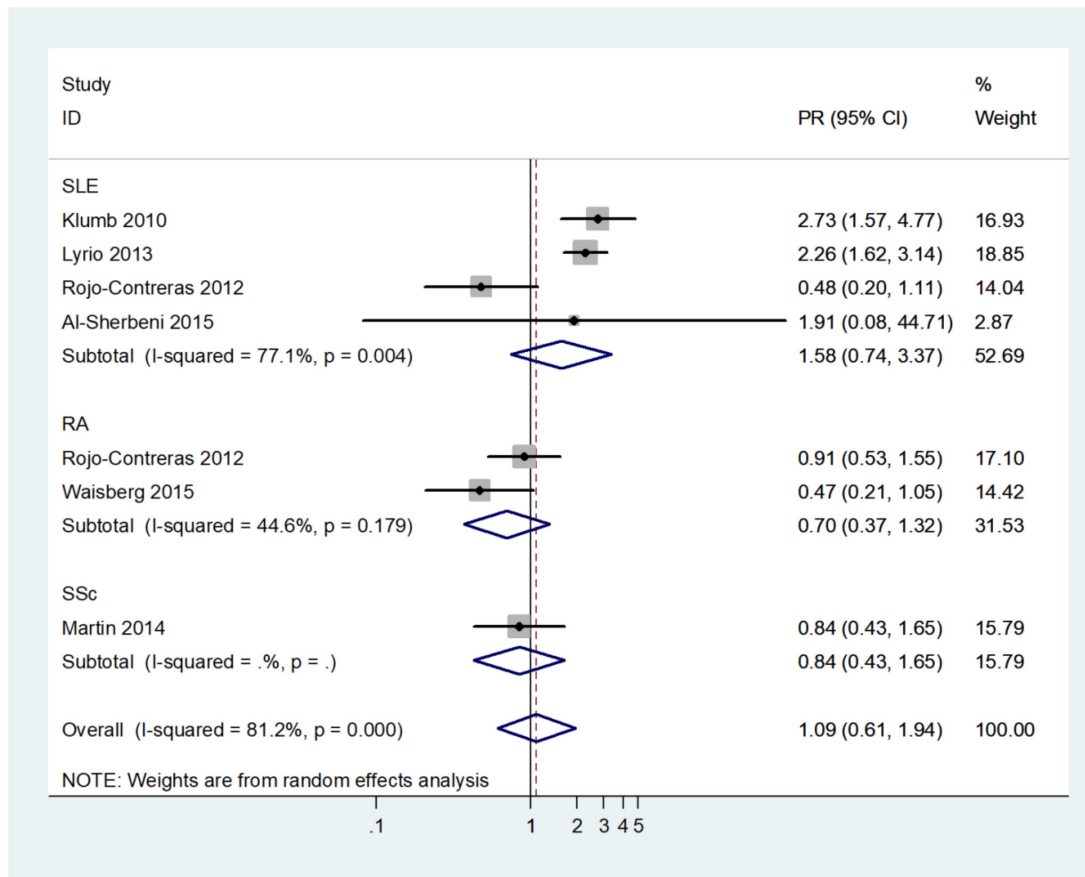


Figure 3 Forest plot of the meta-analysis of pooled prevalence ratio (PR) of human papillomavirus in patients with autoimmune inflammatory rheumatic diseases compared with the general population. RA, rheumatoid arthritis; SLE, systemic lupus erythematosus; SSc, systemic sclerosis.

(32% vs 38%).⁷⁸ High-risk HPV52 was the most common genotype with a greater multi-HPV infection rate.⁷⁸

In summary, the prevalence of genital HPV infection, including high-risk HPV serotypes and HGSIL, was increased in the female population with SLE from Latin America and Asia and comparable to the general population in patients with RA and SSc, based on the limited data.

Hepatitis B (HBV)

The epidemiology of HBV infection widely varies around the globe. The seroprevalence of hepatitis B surface antigen (HBsAg), reflecting chronic infection with HBV, is estimated as 3.6% (95% CI 3.6% to 3.6%) worldwide, with the highest prevalence in countries of the African (total 8.8%, CI 8.8% to 8.8%) and Western Pacific regions (total 5.3%, CI 5.3% to 5.3%).⁷⁹ In the Americas and the WHO European region, the prevalence ranges from 0.2% to 13.6%.⁷⁹

The scope of the SLR performed in 2011 did not include data on HBV infection. The present SLR retrieved 10 cross-sectional studies, conducted mainly in the Asian population (China, Japan, Taiwan) on the seroprevalence of HBV, defined by positive HbsAg and/or positive anti-hepatitis B core antibody (anti-HBc) among patients

with AIIRD.^{80–89} All studies were of cross-sectional design with level of evidence 3b.

The documented HBV seroprevalence differed considerably between the studies (table 3 in the supplementary file). The lowest prevalence of HBsAg was reported in patients with SLE, followed by RA and SpA in the increasing order, with the highest prevalence detected in patients with AS.^{82–89} The pooled seroprevalence of HBsAg was 3% (95% CI 1% to 5%) and for anti-HBc 15% (CI 95% 7% to 26%) (figure 4; table 4 in the supplementary file). There was a high heterogeneity among the studies, $Q < 0.1$. For publication bias assessment, a funnel plot of the seroprevalence results was depicted (figure 3 in the supplementary file) with Egger's meta-regression tests with quantitative and descriptive p values being non-significant ($p > 0.1$). Overall, in the present studies, the prevalence of HBV in the AIIRD population seems to be similar, and in some studies even lower,^{80–86–87} compared with the general population.

DISCUSSION

This SLR presents the update on the incidence and prevalence of VPI among patients with AIIRD. The results of the SLR highlight the insufficient data on the

epidemiology of most VPI in the AIIRD population. In fact, data were available on only 5 out of 18 searched VPI: influenza, *S. pneumoniae*, HZ, HPV and HBV infections. Furthermore, there was a paucity of European studies addressing the epidemiology of HPV and HBV infections, with most studies being conducted in Latin America and Asia. However, this information was extremely useful in the process of formulation of the recommendations for vaccination in patients with AIIRD, since it emphasised the increased prevalence of influenza, *S. pneumoniae*, HZ and HPV among patients with AIIRD, especially encouraging vaccination against these agents. The observation of a similar prevalence of hepatitis B infection among patients with AIIRD and the general population supported the recommendation to vaccinate patients with AIIRD for HBV as indicated for the general population.

Concerning influenza, patients with AIIRD are prone for contracting influenza and influenza-related complications compared with the general population. A limited number of the eligible studies ($n=4$) and their heterogeneous outcomes (patient reported ILI symptoms and ICD codes) precluded the performance of a meta-analysis. Lack of data concerning microbiological confirmation of the diagnosis of influenza should be noted

in all four studies. This limitation is pertinent to epidemiological studies on influenza in general, as the evaluation of the precise incidence of influenza represents a complex epidemiological challenge, due to lack of access to sensitive and specific diagnostic tests, difficulty obtaining specimens for testing, the unpredictability of influenza epidemics, and the complexity of assembling and following large cohorts.⁹⁰

Concerning pneumococcal infection, patients with AIIRD are prone for contracting pneumococcal disease compared with the general population. Importantly, patients with SLE, including young patients, are at particular increased risk for pneumococcal disease.²³ In this dataset, heterogeneity of the outcomes and reporting the pneumococcal disease incidence for the combined groups of inflammatory diseases, including inflammatory bowel diseases in some studies, precluded conducting a meta-analysis.

With regard to HZ, the sample size of studies reporting the incidence of HZ infection, most of which were of moderate to good quality, permitted the performance of a meta-analysis, that unequivocally demonstrated that patients with AIIRD are at increased risk to contract HZ compared with the general population. This conclusion was consistent with the previous 2011 review results. A

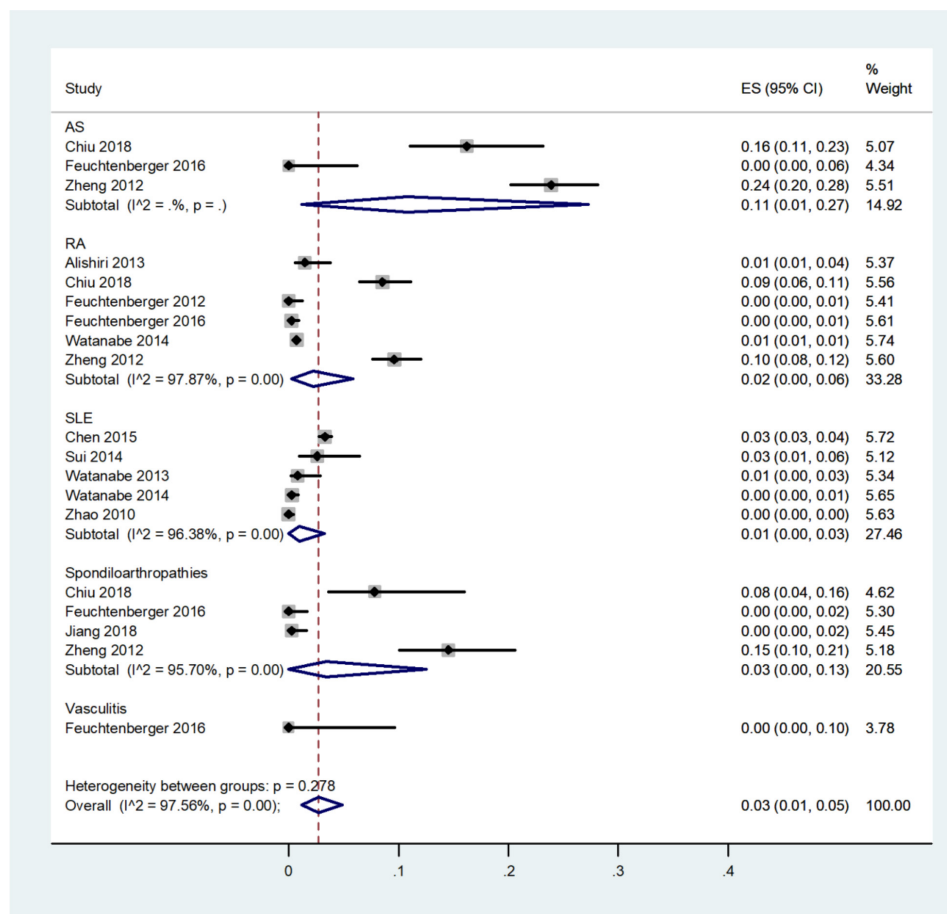


Figure 4 Forest plot of pooled prevalence of hepatitis B surface antigen virus in patients with autoimmune inflammatory rheumatic diseases. AS, ankylosing spondylitis; RA, rheumatoid arthritis; SLE, systemic lupus erythematosus.

particularly high risk for HZ was observed in patients with inflammatory myositis and SLE, including young patients with SLE, for whom vaccination for HZ has not been approved by the regulatory agencies but only for those aged 50 years and older. Importantly, the burden of HZ in SLE is also reflected by an increasing trend in hospitalisation for HZ in patients with SLE in the recent decade.^{61 91}

The prevalence of HPV infection is significantly affected by both geographical distribution and socioeconomic status of the population, factors that may preclude extrapolation of the data retrieved in the present SLR to the European AIIRD population. Most studies included in the meta-analysis showed a tendency towards a higher prevalence of genital HPV, including high-risk serotypes of HPV, and HGSIL in patients in SLE but not in patients with RA and SSc. These data should be cautiously interpreted given the heterogeneity of the studies and their diverse geographical distribution (Latin America and Asia).

The common assumption is that the increased prevalence of influenza, pneumococcal disease, HZ and HPV is related to the status of immunodeficiency inherent to the nature of autoimmune diseases and immunosuppressive treatments. Concerning HPV, it has been suggested that the virus itself may be a trigger for the onset or exacerbation of SLE.^{92 93}

The meta-analysis of the seroprevalence of chronic HBV infection in patients with AIIRD mirrored the global epidemiology of the disease in the general population.

This SLR reports an increased risk of VPI in patients with AIIRD, emphasising that prevention of infections is essential in these patients. In addition, it highlights the importance of the epidemiological research of the incidence and prevalence of VPI in patients with AIIRD. The proposed research agenda, therefore, includes the collection of reliable epidemiological data using standardised methodology of disease rates and development of prevention and control strategies for infectious diseases in patients with AIIRD.

Author affiliations

- ¹Department of Rheumatology, Tel Aviv Sourasky Medical Center, Tel Aviv, Israel
- ²Sackler Faculty of Medicine, Tel Aviv University, Tel Aviv, Israel
- ³Medical Microbiology and Infection Prevention, UMCG, Groningen, The Netherlands
- ⁴Rheumatology and Clinical Immunology, UMCG, Groningen, The Netherlands
- ⁵Internal Medicine and Allergy, Rheumatology and Clinical Immunology, UMC Utrecht, Utrecht, The Netherlands
- ⁶Internal Medicine (Infectious Diseases), Treant Care Group, Hoogeveen, The Netherlands
- ⁷Internal Medicine, Martini Hospital, Groningen, The Netherlands
- ⁸Zabludowicz Center for Autoimmune Diseases, Sheba Medical Center, Tel Hashomer, Israel
- ⁹Department of Rheumatology, Leiden University Medical Center, Leiden, The Netherlands
- ¹⁰Dipartimento di Medicina Clinica e Molecolare, Sapienza University of Rome, Roma, Italy
- ¹¹Department of Rheumatology, Hôpital Cochin, Université Paris Descartes, Paris, France
- ¹²Department of Clinical Sciences Lund, Section for Rheumatology, Lund University and Skåne University Hospital, Lund, Sweden

¹³Department of Rheumatology and Clinical Immunology, University Medical Center Utrecht and Utrecht University, Utrecht, The Netherlands

¹⁴Institute of Clinical Medicine, Section of Rheumatology, Aarhus University Hospital, Aarhus, Denmark

¹⁵Clinical Immunology and Rheumatology, Academic Medical Center, University of Amsterdam, Amsterdam, The Netherlands

¹⁶Department of Rheumatology, Zuyderland Medical Centre, Heerlen, The Netherlands

¹⁷Department of Rheumatology and Clinical Immunology, Justus-Liebig-University, Giessen, Germany

¹⁸Department of Rheumatology, King Christian X's Hospital for Rheumatic Diseases, Graasten, Denmark

¹⁹Department of Thrombosis and Haemophilia, Guy's and St Thomas' Hospital, London, United Kingdom

²⁰Tel Aviv, Israel

²¹Elgin, UK

²²Center for Chronic Immunodeficiency, Faculty of Medicine, University of Freiburg, University Medical Center Freiburg, Freiburg, Germany

²³Department of Pediatric Rheumatology, Wilhelmina Children's Hospital, University Medical Center Utrecht, Utrecht, The Netherlands

Contributors VF, with collaboration with OE, performed literature search and reviewed articles on the prevalence and/or incidence of vaccine preventable diseases in patients with autoimmune inflammatory rheumatic diseases. The systematic literature review (SLR) and meta-analysis, when applicable, was performed under the supervision by SvA, the expert in infectious diseases, and the methodologists, JMvL and RL. The results of the SLR were presented to all task force members, discussed and reviewed during the task force meetings. VF drafted and edited the manuscript, under the supervision of OE. All authors read and approved the final version of the manuscript.

Funding This project was supported by EULAR.

Competing interests MD reports grants and personal fees from Pfizer, grants and personal fees from Abbvie, grants and personal fees from UCB, grants and personal fees from Novartis, grants and personal fees from Lilly, grants and personal fees from Merck, grants and personal fees from Roche, grants from BMS, outside the submitted work. OE reports grants and personal fees from Pfizer, grants, personal fees from Abbvie, grants and personal fees from Roche, grants and personal fees from Janssen, personal fees from Novartis and Lilly. AM reports grants and personal fees from Abbvie, grants and personal fees from Pfizer, grants and personal fees from BMS, grants and personal fees from UCB, grants and personal fees from Merck, during the conduct of the study. KW reports personal fees from Pfizer, during the conduct of the study; grants and personal fees from Biotest, grants and personal fees from CSL Behring, personal fees from LFB, personal fees from Grifols, grants from BMS, personal fees from Baxter, personal fees from Roche, personal fees from Octapharma, outside the submitted work.

Patient consent for publication Not required.

Provenance and peer review Not commissioned; externally peer reviewed.

Data availability statement All data relevant to the study are included in the article or uploaded as supplementary information.

Open access This is an open access article distributed in accordance with the Creative Commons Attribution Non Commercial (CC BY-NC 4.0) license, which permits others to distribute, remix, adapt, build upon this work non-commercially, and license their derivative works on different terms, provided the original work is properly cited, appropriate credit is given, any changes made indicated, and the use is non-commercial. See: <http://creativecommons.org/licenses/by-nc/4.0/>.

REFERENCES

1. van Assen S, Agmon-Levin N, Elkayam O, *et al*. EULAR recommendations for vaccination in adult patients with autoimmune inflammatory rheumatic diseases. *Ann Rheum Dis* 2011;70:414–22.
2. Falagas ME, Manta KG, Betsi GI, *et al*. Infection-Related morbidity and mortality in patients with connective tissue diseases: a systematic review. *Clin Rheumatol* 2007;26:663–70.
3. van Assen S, Elkayam O, Agmon-Levin N, *et al*. Vaccination in adult patients with auto-immune inflammatory rheumatic diseases: a systematic literature review for the European League against rheumatism evidence-based recommendations for vaccination in adult patients with auto-immune inflammatory rheumatic diseases. *Autoimmun Rev* 2011;10:341–52.

4. Rondaan C, Furer V, Heijstek MW, *et al.* Efficacy, immunogenicity and safety of vaccination in adult patients with autoimmune inflammatory rheumatic diseases: a systematic literature review for the 2019 update of EULAR recommendations. *RMD Open* 2019.
5. Larney S, Kopinski H, Beckwith CG, *et al.* Incidence and prevalence of hepatitis C in prisons and other closed settings: results of a systematic review and meta-analysis. *Hepatology* 2013;58:1215–24.
6. Wells G, Shea B, O'Connell D. The Newcastle-Ottawa scale (NOS) for assessing the quality of nonrandomised studies in meta-analyses. Available: http://www.ohrica.com/programs/clinical_epidemiology/oxfordasp
7. Oxford centre for evidence-based medicine – levels of evidence. The Oxford 2009 level of evidence updated in, 2012
8. Moher D, Liberati A, Tetzlaff J, *et al.* Reprint--preferred reporting items for systematic reviews and meta-analyses: the PRISMA statement. *Phys Ther* 2009;89:873–80.
9. Somes MP, Turner RM, Dwyer LJ, *et al.* Estimating the annual attack rate of seasonal influenza among unvaccinated individuals: a systematic review and meta-analysis. *Vaccine* 2018;36:3199–207.
10. Blumentals WA, Arreglado A, Napalkov P, *et al.* Rheumatoid arthritis and the incidence of influenza and influenza-related complications: a retrospective cohort study. *BMC Musculoskelet Disord* 2012;13:158.
11. Dirven L, Huizinga TWJ, Allaart CF. Risk factors for reported influenza and influenza-like symptoms in patients with rheumatoid arthritis. *Scand J Rheumatol* 2012;41:359–65.
12. Bello SL, Serafino L, Bonali C, *et al.* Incidence of influenza-like illness into a cohort of patients affected by chronic inflammatory rheumatism and treated with biological agents. *Reumatismo* 2012;64:299–306.
13. Mohammad AJ, Segelmark M, Smith R, *et al.* Severe infection in antineutrophil cytoplasmic antibody-associated vasculitis. *J Rheumatol* 2017;44:1468–75.
14. Marrie TJ, Durant H, Yates L. Community-Acquired pneumonia requiring hospitalization: 5-year prospective study. *Clinical Infectious Diseases* 1989;11:586–99.
15. Carratala J, Mykietiak A, Fernandez-Sabe N. Health care-associated pneumonia requiring hospital admission: epidemiology, antibiotic therapy, and clinical outcomes. *Arch Intern Med* 2007;167:1393–9.
16. Pneumococcal disease surveillance and reporting, centers for disease control and prevention (CDC). Available: <https://www.cdc.gov/pneumococcal/surveillance.html> [Accessed 1 Aug 2018].
17. Shea KM, Edelsberg J, Weycker D, *et al.* Rates of pneumococcal disease in adults with chronic medical conditions. *Open Forum Infect Dis* 2014;1.
18. Wotton CJ, Goldacre MJ. Risk of invasive pneumococcal disease in people admitted to hospital with selected immune-mediated diseases: record linkage cohort analyses. *J Epidemiol Community Health* 2012;66:1177–81.
19. Shigayeva A, Rudnick W, Green K, *et al.* Invasive pneumococcal disease among immunocompromised persons: implications for vaccination programs. *Clin Infect Dis* 2016;62:139–47.
20. Luijten RKM, Cuppen BVJ, Bijlsma JWJ, *et al.* Serious infections in systemic lupus erythematosus with a focus on pneumococcal infections. *Lupus* 2014;23:1512–6.
21. Schurder J, Goulenok T, Jouenne R, *et al.* Pneumococcal infection in patients with systemic lupus erythematosus. *Joint Bone Spine* 2018;85:333–6.
22. Weycker D, Farkouh RA, Stratton DR, *et al.* Rates and costs of invasive pneumococcal disease and pneumonia in persons with underlying medical conditions. *BMC Health Serv Res* 2016;16:182.
23. Backhaus E, Berg S, Andersson R, *et al.* Epidemiology of invasive pneumococcal infections: manifestations, incidence and case fatality rate correlated to age, gender and risk factors. *BMC Infect Dis* 2016;16:367.
24. Johnson RW, Alvarez-Pasquin M-J, Bijl M, *et al.* Herpes zoster epidemiology, management, and disease and economic burden in Europe: a multidisciplinary perspective. *Ther Adv Vaccines* 2015;3:109–20.
25. Veetil BMA, Myasoedova E, Matteson EL, *et al.* Incidence and time trends of herpes zoster in rheumatoid arthritis: a population-based cohort study. *Arthritis Care Res* 2013;65:854–61.
26. Widdifield J, Bernatsky S, Paterson JM, *et al.* Serious infections in a population-based cohort of 86,039 seniors with rheumatoid arthritis. *Arthritis Care Res* 2013;65:353–61.
27. Galloway JB, Mercer LK, Moseley A, *et al.* Risk of skin and soft tissue infections (including shingles) in patients exposed to anti-tumour necrosis factor therapy: results from the British Society for rheumatology biologics register. *Ann Rheum Dis* 2013;72:229–34.
28. Chen S-Y, Suaya JA, Li Q, *et al.* Incidence of herpes zoster in patients with altered immune function. *Infection* 2014;42:325–34.
29. Winthrop KL, Baddley JW, Chen L, *et al.* Association between the initiation of anti-tumor necrosis factor therapy and the risk of herpes zoster. *JAMA* 2013;309:887–95.
30. Nakajima A, Urano W, Inoue E, *et al.* Incidence of herpes zoster in Japanese patients with rheumatoid arthritis from 2005 to 2010. *Mod Rheumatol* 2015;25:558–61.
31. Segan J, Staples MP, March L, *et al.* Risk factors for herpes zoster in rheumatoid arthritis patients: the role of tumour necrosis factor- α inhibitors. *Intern Med J* 2015;45:310–8.
32. Pappas DA, Hooper MM, Kremer JM, *et al.* Herpes zoster reactivation in patients with rheumatoid arthritis: analysis of disease characteristics and disease-modifying antirheumatic drugs. *Arthritis Care Res* 2015;67:1671–8.
33. Yun H, Xie F, Delzell E, *et al.* Risks of herpes zoster in patients with rheumatoid arthritis according to biologic disease-modifying therapy. *Arthritis Care Res* 2015;67:731–6.
34. Yun H, Yang S, Chen L, *et al.* Risk of herpes zoster in autoimmune and inflammatory diseases: implications for vaccination. *Arthritis Rheumatol* 2016;68:2328–37.
35. Curtis JR, Xie F, Yun H, *et al.* Real-World comparative risks of herpes virus infections in tofacitinib and biologic-treated patients with rheumatoid arthritis. *Ann Rheum Dis* 2016;75:1843–7.
36. Burmester GR, Landewé R, Genovese MC, *et al.* Adalimumab long-term safety: infections, vaccination response and pregnancy outcomes in patients with rheumatoid arthritis. *Ann Rheum Dis* 2017;76:414–7.
37. Harada S, Sakai R, Hirano F, *et al.* Association between medications and herpes zoster in Japanese patients with rheumatoid arthritis: a 5-year prospective cohort study. *J Rheumatol* 2017;44:988–95.
38. Cohen SB, Tanaka Y, Mariette X, *et al.* Long-term safety of tofacitinib for the treatment of rheumatoid arthritis up to 8.5 years: integrated analysis of data from the global clinical trials. *Ann Rheum Dis* 2017;76:1253–62.
39. Liao Tsai-Ling, Lin Ching-Heng, Chen Hsin-Hua, *et al.* Significant associations of neurological complications of herpes zoster with stroke in rheumatoid arthritis patients. *J Am Heart Assoc* 2017;6.
40. Sakai R, Kasai S, Hirano F, *et al.* No increased risk of herpes zoster in TNF inhibitor and non-TNF inhibitor users with rheumatoid arthritis: epidemiological study using the Japanese health insurance database. *Int J Rheum Dis* 2018;21:1670–7.
41. Zisman D, Bitterman H, Shalom G, *et al.* Psoriatic arthritis treatment and the risk of herpes zoster. *Ann Rheum Dis* 2016;75:131–5.
42. Lim D-H, Kim Y-J, Kim SO, *et al.* The risk of herpes zoster in patients with ankylosing spondylitis: Analysis of the Korean National Health Insurance Service - Sample cohort database. *Mod Rheumatol* 2018;28:168–73.
43. Borba EF, Ribeiro ACM, Martin P, *et al.* Incidence, risk factors, and outcome of herpes zoster in systemic lupus erythematosus. *J Clin Rheumatol* 2010;16:119–22.
44. Chen H-H, Chen Y-M, Chen T-J, *et al.* Risk of herpes zoster in patients with systemic lupus erythematosus: a three-year follow-up study using a nationwide population-based cohort. *Clinics* 2011;66:1177–82.
45. Chakravarty EF, Michaud K, Katz R, *et al.* Increased incidence of herpes zoster among patients with systemic lupus erythematosus. *Lupus* 2013;22:238–44.
46. Chen J-Y, Wang L-K, Feng P-H, *et al.* Risk of shingles in adults with primary Sjogren's syndrome and treatments: a nationwide population-based cohort study. *PLoS One* 2015;10:e0134930.
47. Fardet L, Rybojad M, Gain M, *et al.* Incidence, risk factors, and severity of herpesvirus infections in a cohort of 121 patients with primary dermatomyositis and dermatomyositis associated with a malignant neoplasm. *Arch Dermatol* 2009;145:889–93.
48. Marie I, Ménard J-F, Hachulla E, *et al.* Infectious complications in polymyositis and dermatomyositis: a series of 279 patients. *Semin Arthritis Rheum* 2011;41:48–60.
49. Tsai S-Y, Lin C-L, Wong Y-C, *et al.* Increased risk of herpes zoster following dermatomyositis and polymyositis: a nationwide population-based cohort study. *Medicine* 2015;94:e1138.
50. Robinson ES, Payne AS, Pappas-Taffer L, *et al.* The incidence of herpes zoster in cutaneous lupus erythematosus (CLE), dermatomyositis (DM), pemphigus vulgaris (pv), and bullous pemphigoid (BP). *J Am Acad Dermatol* 2016;75:42–8.
51. Schäfer VS, Kermani TA, Crowson CS, *et al.* Incidence of herpes zoster in patients with giant cell arteritis: a population-based cohort study. *Rheumatology* 2010;49:2104–8.
52. Che H, Lukas C, Morel J, *et al.* Risk of herpes/herpes zoster during anti-tumor necrosis factor therapy in patients with rheumatoid arthritis. systematic review and meta-analysis. *Joint Bone Spine* 2014;81:215–21.

53. Kawai K, Yawn BP. Risk factors for herpes zoster: a systematic review and meta-analysis. *Mayo Clin Proc* 2017;92:1806–21.
54. Liao T-L, Chen Y-M, Liu H-J, et al. Risk and severity of herpes zoster in patients with rheumatoid arthritis receiving different immunosuppressive medications: a case-control study in Asia. *BMJ Open* 2017;7:e014032.
55. Zhang N, Wilkinson S, Riaz M, et al. Does methotrexate increase the risk of varicella or herpes zoster infection in patients with rheumatoid arthritis? A systematic literature review. *Clin Exp Rheumatol* 2012;30:962–71.
56. Ramiro S, Sepriano A, Chatzidionysiou K, et al. Safety of synthetic and biological DMARDs: a systematic literature review Informing the 2016 update of the EULAR recommendations for management of rheumatoid arthritis. *Ann Rheum Dis* 2017;76:1101–36.
57. Tanaka Y, Ishii T, Cai Z. Efficacy and safety of baricitinib in Japanese patients with active rheumatoid arthritis: a 52-week, randomized, single-blind, extension study. *Modern rheumatology* 2017:1–10.
58. Hu SC-S, Yen F-L, Wang T-N, et al. Immunosuppressive medication use and risk of herpes zoster (Hz) in patients with systemic lupus erythematosus (SLE): a nationwide case-control study. *J Am Acad Dermatol* 2016;75:49–58.
59. Furie R, Khamashta M, Merrill JT, et al. Anifrolumab, an Anti-Interferon- α receptor monoclonal antibody, in moderate-to-severe systemic lupus erythematosus. *Arthritis Rheumatol* 2017;69:376–86.
60. Khamashta M, Merrill JT, Werth VP, et al. Sifalimumab, an anti-interferon- α monoclonal antibody, in moderate to severe systemic lupus erythematosus: a randomised, double-blind, placebo-controlled study. *Ann Rheum Dis* 2016;75:1909–16.
61. Murray SG, Schmajuk G, Trupin L, et al. National lupus hospitalization trends reveal rising rates of herpes zoster and declines in Pneumocystis pneumonia. *PLoS One* 2016;11:e0144918.
62. Serrano B, Brotons M, Bosch FX, et al. Epidemiology and burden of HPV-related disease. *Best Pract Res Clin Obstet Gynaecol* 2018;47:14–26.
63. Bruni L, Diaz M, Castellsagué X, et al. Cervical human papillomavirus prevalence in 5 continents: meta-analysis of 1 million women with normal cytological findings. *J Infect Dis* 2010;202:1789–99.
64. Tam L-S, Chan AYK, Chan PKS, et al. Increased prevalence of squamous intraepithelial lesions in systemic lupus erythematosus: association with human papillomavirus infection. *Arthritis Rheum* 2004;50:3619–25.
65. Nath R, Mant C, Luxton J, et al. High risk of human papillomavirus type 16 infections and of development of cervical squamous intraepithelial lesions in systemic lupus erythematosus patients. *Arthritis Rheum* 2007;57:619–25.
66. Klumb EM, Pinto AC, Jesus GR, et al. Are women with lupus at higher risk of HPV infection? *Lupus* 2010;19:1485–91.
67. Tam L-S, Chan PKS, Ho SC, et al. Natural history of cervical papilloma virus infection in systemic lupus erythematosus - a prospective cohort study. *J Rheumatol* 2010;37:330–40.
68. Lee Y-H, Choe J-Y, Park S-H, et al. Prevalence of human papilloma virus infections and cervical cytological abnormalities among Korean women with systemic lupus erythematosus. *J Korean Med Sci* 2010;25:1431–7.
69. Rojo-Contreras W, Olivas-Flores EM, Gamez-Nava JI, et al. Cervical human papillomavirus infection in Mexican women with systemic lupus erythematosus or rheumatoid arthritis. *Lupus* 2012;21:365–72.
70. Lyrio LDC, Grassi MFR, Santana IU, et al. Prevalence of cervical human papillomavirus infection in women with systemic lupus erythematosus. *Rheumatol Int* 2013;33:335–40.
71. Mendoza-Pinto C, Garcia-Carrasco M, Vallejo-Ruiz V, et al. The impact of glucocorticoids and anti-CD20 therapy on cervical human papillomavirus infection risk in women with systemic lupus erythematosus. *Clinics* 2013;68:1475–80.
72. Garcia-Carrasco M, Mendoza-Pinto C, Munguía-Realpozo P, et al. Lack of association between serum 25-hydroxyvitamin D levels and cervical human papillomavirus infection in systemic lupus erythematosus. *Lupus* 2015;24:606–12.
73. Al-Sherbeni HH, Fahmy AM, Sherif N. Predisposition to cervical atypia in systemic lupus erythematosus: a clinical and Cytopathological study. *Autoimmune Dis* 2015;2015:1–5.
74. Mendoza-Pinto C, Garcia-Carrasco M, Vallejo-Ruiz V, et al. Incidence of cervical human papillomavirus infection in systemic lupus erythematosus women. *Lupus* 2017;26:944–51.
75. Amaral JLAdo, Araújo MVdeA, Dias GAdaS, et al. Clinical and epidemiological study of human papillomavirus infection in women with systemic lupus erythematosus in eastern Brazilian Amazon. *Acta Reumatol Port* 2017;42:47–54.
76. Méndez-Martínez S, García-Carrasco M, Jiménez-Herrera EA, et al. Factors of the epidemiological triad that influence the persistence of human papilloma virus infection in women with systemic lupus erythematosus. *Lupus* 2018;27:1542–6.
77. Waisberg MG, Ribeiro ACM, Candido WM, et al. Human papillomavirus and Chlamydia trachomatis infections in rheumatoid arthritis under anti-TNF therapy: an observational study. *Rheumatol Int* 2015;35:459–63.
78. Martin M, Mougín C, Pretet JL. Screening of human papillomavirus infection in women with systemic sclerosis. *Clin Exp Rheumatol* 2014;32(Suppl 86):S-145–8.
79. Schweitzer A, Horn J, Mikolajczyk RT, et al. Estimations of worldwide prevalence of chronic hepatitis B virus infection: a systematic review of data published between 1965 and 2013. *Lancet* 2015;386:1546–55.
80. Zhao J, Qiu M, Li M, et al. Low prevalence of hepatitis B virus infection in patients with systemic lupus erythematosus in southern China. *Rheumatol Int* 2010;30:1565–70.
81. Mori S. Past hepatitis B virus infection in rheumatoid arthritis patients receiving biological and/or nonbiological disease-modifying antirheumatic drugs. *Mod Rheumatol* 2011;21:621–7.
82. Zheng B, Li T, Lin Q, et al. Prevalence of hepatitis B surface antigen in patients with ankylosing spondylitis and its association with HLA-B27: a retrospective study from South China. *Rheumatol Int* 2012;32:2011–6.
83. Alishiri GH, Ghorbani GA, Ahmad S. Prevalence of hepatitis B infection in rheumatoid arthritis patients. *Pak J Biol Sci* 2013;16:747–50.
84. Watanabe R, Ishii T, Nakamura K, et al. Prevalence and time course of hepatitis B virus infection in patients with systemic lupus erythematosus under immunosuppressive therapy. *Mod Rheumatol* 2013;23:1094–100.
85. Watanabe R, Ishii T, Kobayashi H, et al. Prevalence of hepatitis B virus infection in patients with rheumatic diseases in Tohoku area: a retrospective multicenter survey. *Tohoku J Exp Med* 2014;233:129–33.
86. Sui M, Wu R, Hu X, et al. Low prevalence of hepatitis B virus infection in patients with autoimmune diseases in a Chinese patient population. *J Viral Hepat* 2014;21:925–9.
87. Chen X, Hong L, Zhang W, et al. Hepatitis B virus infection rate and distribution in Chinese systemic lupus erythematosus patients. *Med Sci Monit* 2015;21:1955–9.
88. Feuchtenberger M, Schäfer A, Philipp Nigg A, et al. Hepatitis B serology in patients with rheumatic diseases. *Open Rheumatol J* 2016;10:39–48.
89. Chiu Y-M, Lai M-S, Chan KA. Commensurate incidence and outcomes of liver enzyme elevation between anti-tumor necrosis factor users with or without prior hepatitis B virus infections. *PLoS One* 2018;13:e0196210.
90. Gordon A, Reingold A. The burden of influenza: a complex problem. *Curr Epidemiol Rep* 2018;5:1–9.
91. Tektonidou MG, Wang Z, Dasgupta A, et al. Burden of serious infections in adults with systemic lupus erythematosus: a national population-based study, 1996–2011. *Arthritis Care Res* 2015;67:1078–85.
92. Soldevilla HF, Briones SFR, Navarra SV. Systemic lupus erythematosus following HPV immunization or infection? *Lupus* 2012;21:158–61.
93. Grönlund O, Herweijer E, Sundström K, et al. Incidence of new-onset autoimmune disease in girls and women with pre-existing autoimmune disease after quadrivalent human papillomavirus vaccination: a cohort study. *J Intern Med* 2016;280:618–26.