

University of Groningen

BUDHIES II

Jaffé, Yara L.; Smith, Rory; Candlish, Graeme N.; Poggianti, Bianca M.; Sheen, Yun-Kyeong; Verheijen, Marc A. W.

Published in:
Monthly Notices of the Royal Astronomical Society

DOI:
[10.1093/mnras/stv100](https://doi.org/10.1093/mnras/stv100)

IMPORTANT NOTE: You are advised to consult the publisher's version (publisher's PDF) if you wish to cite from it. Please check the document version below.

Document Version
Publisher's PDF, also known as Version of record

Publication date:
2015

[Link to publication in University of Groningen/UMCG research database](#)

Citation for published version (APA):

Jaffé, Y. L., Smith, R., Candlish, G. N., Poggianti, B. M., Sheen, Y-K., & Verheijen, M. A. W. (2015). BUDHIES II: A phase-space view of H I gas stripping and star formation quenching in cluster galaxies. *Monthly Notices of the Royal Astronomical Society*, 448(2), 1715-1728. <https://doi.org/10.1093/mnras/stv100>

Copyright

Other than for strictly personal use, it is not permitted to download or to forward/distribute the text or part of it without the consent of the author(s) and/or copyright holder(s), unless the work is under an open content license (like Creative Commons).

The publication may also be distributed here under the terms of Article 25fa of the Dutch Copyright Act, indicated by the "Taverne" license. More information can be found on the University of Groningen website: <https://www.rug.nl/library/open-access/self-archiving-pure/taverne-amendment>.

Take-down policy

If you believe that this document breaches copyright please contact us providing details, and we will remove access to the work immediately and investigate your claim.

Downloaded from the University of Groningen/UMCG research database (Pure): <http://www.rug.nl/research/portal>. For technical reasons the number of authors shown on this cover page is limited to 10 maximum.



BUDHIES II: a phase-space view of H I gas stripping and star formation quenching in cluster galaxies

Yara L. Jaffé,¹★ Rory Smith,¹ Graeme N. Candlish,¹ Bianca M. Poggianti,²
Yun-Kyeong Sheen¹ and Marc A. W. Verheijen³

¹Department of Astronomy, Universidad de Concepción, Casilla 160-C, Concepción, Chile

²INAF - Osservatorio Astronomico di Padova, vicolo dell' Osservatorio 5, I-35122 Padova, Italy

³University of Groningen, Kapteyn Astronomical Institute, Landleven 12, NL-9747 AD, Groningen, the Netherlands

Accepted 2015 January 7. Received 2015 December 22; in original form 2014 September 15

ABSTRACT

We investigate the effect of ram-pressure from the intracluster medium on the stripping of H I gas in galaxies in a massive, relaxed, X-ray bright, galaxy cluster at $z = 0.2$ from the Blind Ultra Deep H I Environmental Survey (BUDHIES). We use cosmological simulations, and velocity versus position phase-space diagrams to infer the orbital histories of the cluster galaxies. In particular, we embed a simple analytical description of ram-pressure stripping in the simulations to identify the regions in phase-space where galaxies are more likely to have been sufficiently stripped of their H I gas to fall below the detection limit of our survey. We find a striking agreement between the model predictions and the observed location of H I-detected and non-detected blue (late-type) galaxies in phase-space, strongly implying that ram-pressure plays a key role in the gas removal from galaxies, and that this can happen during their first infall into the cluster. However, we also find a significant number of gas-poor, red (early-type) galaxies in the infall region of the cluster that cannot easily be explained with our model of ram-pressure stripping alone. We discuss different possible additional mechanisms that could be at play, including the pre-processing of galaxies in their previous environment. Our results are strengthened by the distribution of galaxy colours (optical and UV) in phase-space, that suggests that after a (gas-rich) field galaxy falls into the cluster, it will lose its gas via ram-pressure stripping, and as it settles into the cluster, its star formation will decay until it is completely quenched. Finally, this work demonstrates the utility of phase-space diagrams to analyse the physical processes driving the evolution of cluster galaxies, in particular H I gas stripping.

Key words: galaxies: clusters: general – galaxies: clusters: individual: Abell 963 – galaxies: clusters: intracluster medium – galaxies: evolution – galaxies: general.

1 INTRODUCTION

Much work has been done to understand the physical processes driving galaxy evolution. It has been shown by many observational and theoretical studies that the environment plays an important role driving the evolution of galaxies (e.g. Dressler 1980; Lewis et al. 2002; Gómez et al. 2003; Koopmann & Kenney 2004; Boselli & Gavazzi 2006; Poggianti et al. 2006; Moran et al. 2007; Bamford et al. 2009; Jaffé et al. 2011b). An unassailable result from observations of galaxies in the local Universe is that cluster galaxies are more likely to have an elliptical or S0 morphology than field galaxies, which are typically star-forming spirals (Dressler 1980). In addition, it is known that the morphology of galaxies corre-

lates with their stellar populations. In a colour–magnitude diagram (CMD), elliptical and S0 (i.e. early-type) galaxies follow a tight correlation (the so-called ‘red sequence’; Baum 1959; Visvanathan & Sandage 1977), that indicates they have old stellar populations (Bower, Lucey & Ellis 1992; Aragón-Salamanca et al. 1993; Jaffé et al. 2011a). Spiral and irregular (i.e. late-type) galaxies instead tend to display a wide range of bluer colours, often referred to as the ‘blue cloud’. The existence of a clear colour bimodality in clusters strongly supports the idea that environment plays an important role in quenching the star formation in galaxies. Moreover, observations of distant galaxies have shown a steady rise in the fraction of S0s in clusters, along with a comparable decline in the spiral fraction since $z \sim 0.5$, while the fraction of elliptical galaxies remains constant (Fasano et al. 2000; Desai et al. 2007). When considering the predicted evolution of large-scale structure from cosmological simulations (e.g. De Lucia et al. 2012), this result suggests that

* E-mail: yara.jaffe@astro-udec.cl

spiral galaxies transform into S0s as they transition from the field into clusters. The physical mechanism(s) driving such a transformation is however still under debate.

A particularly important ingredient for understanding galaxy evolution is the atomic gas. Neutral hydrogen (H I) not only provides a reservoir from which H₂ forms, fueling star formation, but is also a sensitive tracer of different environmental processes, such as ram-pressure stripping and tidal interactions. Gunn & Gott (1972) first predicted (analytically) that ram-pressure can be effective in removing the galaxies' interstellar medium (ISM) as they pass through a dense intracluster medium (ICM), thereby quenching their star formation. Observations (e.g. Cayatte et al. 1990; Bravo-Alfaro et al. 2000, 2001; Poggianti & van Gorkom 2001; Kenney, van Gorkom & Vollmer 2004; Crowl et al. 2005; Chung et al. 2007, 2009; Scott et al. 2010, 2012; Abramson et al. 2011; Gavazzi et al. 2013) have shown that the H I gas in galaxies is indeed disturbed and eventually truncated and exhausted in clusters. Recent simulations (see Roediger 2009, for a review) have further supported the idea that this happens via ram-pressure stripping and gravitational interactions (e.g. Vollmer et al. 2001; Vollmer 2003; Kapferer et al. 2009; Tonnesen & Bryan 2009). It is important to note that ram-pressure is expected to be more effective at the centre of massive clusters, because of the higher densities of the ICM, and the high velocities of the galaxies. In fact, ram-pressure stripping models indicate that H I can be fully depleted after a transit through the ICM's core (Roediger & Brüggén 2007).

In addition to the interaction with the ICM, galaxies in massive clusters also suffer fast encounters with other cluster members. The accumulation of such encounters, known as harassment (Moore et al. 1999), can cause disc thickening and gas fuelling of the central region. Harassment can strip H I from galaxies (Duc & Bournaud 2008) and is most effective in low-surface-brightness galaxies, and towards the core of galaxy clusters (Moore et al. 1999).

Finally, it has also been suggested that galaxies can be pre-processed in less massive groups before they fall into clusters (e.g. Zabludoff & Mulchaey 1998). This idea has recently received observational (Balogh et al. 1999; Verdes-Montenegro et al. 2001; Lewis et al. 2002; Jaffé et al. 2012) and theoretical support (McGee et al. 2009; De Lucia et al. 2012). In order to acquire a complete understanding of the physical processes affecting galaxies through their lifetimes, it is thus necessary to couple their observed properties to the cosmic environments which they have inhabited throughout their lifetimes.

Due to technological limitations, studies of the H I content of galaxies have so far mostly been carried out in the local Universe ($z \lesssim 0.08$). To investigate the relation between gas reservoirs and star formation, as well as its evolution, we carried out a Blind Ultra Deep H I Environmental Survey (BUDHIES; Verheijen et al. 2007; Jaffé et al. 2013), that focuses on two pencil-beam pointings containing two galaxy clusters at $z \simeq 0.2$, and the large-scale structure around them. The clusters, Abell 2192 and Abell 963 (A2192_1 and A963_1 from now on¹) are very different from each other.

In Jaffé et al. (2012), we studied A2192_1, and found that this intermediate-mass cluster has a significant amount of substructure (see also Jaffé et al. 2013). The incidence of H I-detections significantly correlates with environment: at large clustercentric radii

($\gtrsim 2$ – 3 virial radii), where the infalling substructures were found, many galaxies are detected in H I, while at the core of the forming cluster, none of the galaxies are H I-detected. We found that this effect starts to become significant in low-mass groups that pre-process the galaxies before they enter the cluster, so that by the time the group galaxies fall into the cluster they may already be H I deficient or even devoid of H I.

A963_1, on the other hand, is a massive cluster with significant X-ray emission centred on the brightest cluster galaxy (BCG). This cluster is thus ideal to study the interaction between galaxies and the ICM. In this paper, we focus on A963_1 to study the effect of ram-pressure in the stripping of H I gas from cluster galaxies, and the later quenching of their star formation.

Recent works by Mahajan, Mamon & Raychaudhury (2011), Oman, Hudson & Behroozi (2013), Noble et al. (2013), Hernández-Fernández et al. (2014), Muzzin et al. (2014) and Taranu et al. (2014) have highlighted the usefulness of phase-space diagnostics to infer the assembly histories of clusters. In simulations, it is possible to trace back the orbital histories of galaxies in clusters, and associate different populations (e.g. infalling, backplash, or galaxies in the virialized part of the cluster) to different phase-space locations. Simulations can provide a six-dimensional phase-space (all three components of both the position and velocity vectors: x, y, z, v_x, v_y, v_z , respectively). Observations of distant galaxies, however, only give three projected parameters: two coordinates, and the line-of-sight velocity (α, δ , and v_{los} , respectively). For simplicity, we refer to the simulated phase-space as '3D', and to the observed one as 'projected'. Despite the loss of information, it is still possible to infer the assembly history of cluster galaxies from their projected phase-space (PPS; see e.g. Oman et al. 2013; Hernández-Fernández et al. 2014). The uncertainties introduced by the projection effects can be minimized by utilizing large (mass-limited) samples of galaxies in regular clusters of similar mass and redshift. Moreover, this approach certainly provides a more complete view of environment compared to the standard 1D view (galaxy properties as a function of radial clustercentric distance only).

In this paper, we investigate the environmentally driven evolution of galaxies in A963_1, a massive cluster at $z = 0.2$, making use of the unique BUDHIES data set. We exploit the H I-data and ancillary data to map the gas stripping and later suppression of the star formation activity of galaxies in phase-space. To interpret our data, we compare it to a simple ram-pressure model built into a cosmological simulations, that predicts the regions in phase-space where H I gas is expected to be stripped from the galaxies in our cluster.

The paper is organized as follows. In Section 2, we summarize the data collected for BUDHIES (Section 2.1), the main characteristics of the cluster (Section 2.2), and the properties of its member galaxies (Section 2.3). In Section 3, we show how the cluster galaxies are distributed in PPS, highlighting the location of the H I-detections. In Section 4.1, we create a simple ram-pressure stripping model, which we embed in the cosmological simulations presented in Section 4.2. These are, in turn, used to derive the assembly histories of the observed clusters and predict the final location of stripped galaxies in PPS. In Section 4.3, we combine our observed and simulated results and discuss the effect of ram-pressure stripping, and compare our results with previous work. We also use galaxy colours in the PPS analysis as tracers of post-stripping evolution in Section 4.4, to better understand the late stages of star formation quenching as a function of the orbital histories of the cluster galaxies. We summarize our findings and draw conclusions in Section 5.

¹ As in Jaffé et al. (2013), we adopt the names 'A963_1' and 'A2192_1' to distinguish these clusters from the other structures we found along the same line of sight, such as galaxy groups and cosmic sheets.

Throughout this paper, we assume a concordance Λ cold dark matter cosmology with $\Omega_M = 0.3$, $\Omega_\Lambda = 0.7$, and $H_0 = 70 \text{ km s}^{-1} \text{ Mpc}^{-1}$.

2 OBSERVATIONS

2.1 BUDHIES data

BUDHIES is an ultra-deep H I survey of galaxies in and around two clusters at $0.16 \leq z \leq 0.22$. The survey has an effective volume depth of 328 Mpc and a coverage on the sky of $\sim 12 \times 12$ Mpc for each cluster, which allows us to study the large-scale structure around the clusters. At the core of our study are the ultra-deep H I observations, carried out at the Westerbork Synthesis Radio telescope (WSRT; Verheijen et al. 2007, 2010) from which we have detected 127 galaxies in A963_1 and 36 in A2192_1 with H I masses $\gtrsim 2 \times 10^9 M_\odot$. In addition to the H I data, we have obtained *B*- and *R*-band imaging with the Isaac Newton Telescope (INT), NUV and FUV imaging with the *Galaxy Evolution Explorer* (GALEX; Fernandez et al., in preparation), *Spitzer* imaging, and near-infrared imaging with United Kingdom Infrared Telescope. Sloan Digital Sky Survey (SDSS) photometry is available for the galaxies in the field, and in a limited number of cases, SDSS spectra are also available. Finally, we have carried out a spectroscopic campaign with WIYN and the AF2 on the William Herschel Telescope, from which we have assessed cluster memberships and characterized the environment in the surveyed volumes (Jaffé et al. 2013).

2.2 A963_1

With a dynamical mass of $1.1 \times 10^{15} h^{-1} M_\odot$ ($\sigma_{\text{cl}} = 993 \text{ km s}^{-1}$), A963_1 is the most massive cluster in BUDHIES. It is found at $z = 0.2039$ and its R_{200} was estimated to be $1.55 h^{-1} \text{ Mpc}$ (Jaffé et al. 2013). The cluster's total X-ray luminosity is $L_X \simeq 3.4 \pm 1 \times 10^{44} \text{ erg s}^{-1} h^{-2}$ (Allen et al. 2003). Its regular and centrally concentrated X-ray emission is centred on a central cD galaxy (see fig. 6 of Smith et al. 2005), suggesting A963_1 is a relaxed cluster. However, in Jaffé et al. (2013) we performed a Dressler–Shectman test (Dressler & Shectman 1988) on the spectroscopic members of A963_1 out to larger radii, and concluded that the ‘relaxed’ part of the cluster is at its core, while there is a mild presence of substructure in the outskirts. In addition, small X-ray substructures have been observed at $r > R_{200}$ (see fig. B.6. in Zhang et al. 2007, see also Haines et al., in preparation for a full description of the X-ray substructures). In this paper, we focus on the global properties of A963_1, ignoring small inhomogeneities in the ICM. This is justified because the vast majority of the X-ray flux is centrally concentrated and very regular. The substructure in the cluster outskirts does not dominate. We leave the detailed study of the H I properties of galaxies as a function of X-ray structure for a future paper.

2.3 The cluster galaxies

In the following, we present derived properties of the spectroscopically-confirmed member galaxies of A963_1.

2.3.1 Stellar masses

To compute stellar masses (M_*) for all the spectroscopically confirmed cluster members, we first converted the five-band SDSS photometry available to absolute magnitudes using our spectroscopic

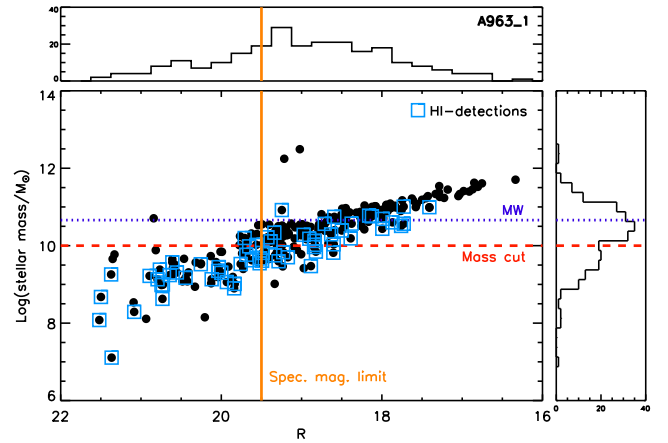


Figure 1. *R*-band magnitude versus $\log(M_*)$ for the cluster members (black circles). The H I-detections are distinguished with open blue squares. At the top and right-hand side of the plot, histograms of the *R*-band magnitude and $\log(M_*)$ are also shown. The dashed red line indicates the mass cut adopted in the analysis of Section 4.3 (see also Section 3), and the dotted blue line is the mass of the MW-like galaxy used as a prototype to explore the effects of ram-pressure stripping in the cluster (cf. Section 4.1). The magnitude limit adopted in the spectroscopic campaign is indicated by the vertical orange line.

redshifts, and the interpolation utility InterRest (Taylor et al. 2009). We then computed the stellar masses following the prescription by Zibetti, Charlot & Rix (2009), with a Kroupa initial mass function.

The distribution of M_* for the cluster members is shown in Fig. 1. In the figure, $\log(M_*)$ is plotted against *R* magnitude. H I-detected galaxies are marked with a blue square and occupy the region of lower stellar masses and fainter *R* magnitudes. The horizontal dashed red line indicates the stellar mass cut ($M_* = 10^{10} M_\odot$) used to define a mass-limited sample, adopted in some of the analysis presented in this paper. This mass cut roughly matches the magnitude cut where our spectroscopic campaign is most complete [dashed orange vertical line, see Jaffé et al. (2013) for details on the target selection].

2.3.2 Colours

To distinguish different galaxy populations, we constructed CMDs using the UV and optical data. In the left-hand panel of Fig. 2, we show the *B* – *R* versus *R* CMD for A963_1. We fitted the red sequence using the reddest (*B* – *R* > 1.9) early-type galaxies (i.e. elliptical and S0s). The best fit ($B - R = -0.042 \times R + 2.98$) is shown by the solid black line in the plot. We further define the blue cloud to contain all galaxies bluer than 0.25 mag below the red sequence (blue filled symbols below dashed line). We note that the morphological classification used to define the red sequence was the product of visual inspection of the INT *B* and *R* images. Several coauthors assigned morphologies to the galaxies and these were later combined. The quality of the images, however, was too poor to robustly assign morphologies to all the cluster galaxies. In fact, we could only determine a rough morphological type for a small sample of galaxies. To avoid introducing scatter to our analysis, or having to reduce the sample significantly, in this paper we only used the morphological information to fit the red sequence. In the analysis however, we use colours instead to broadly separate star-forming, late-type galaxies (blue) from those with quenched star formation and early-type morphology (red).

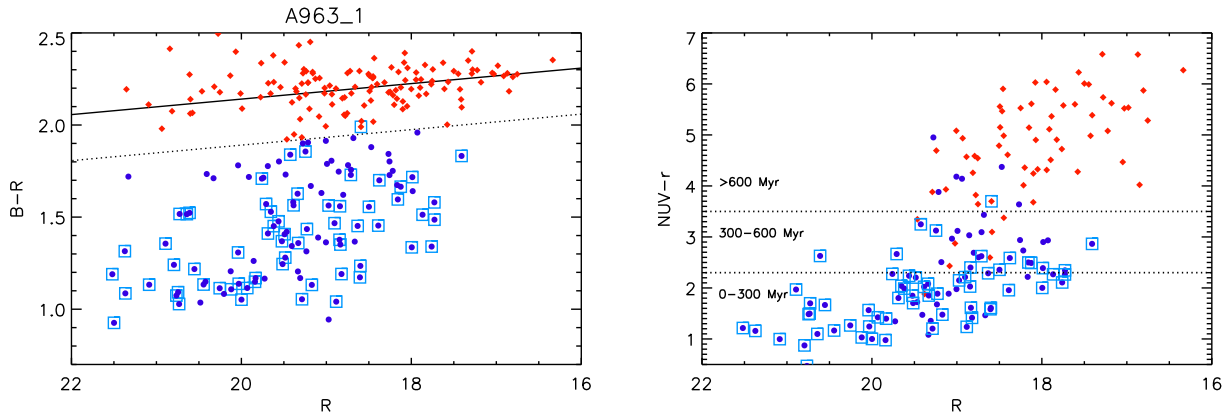


Figure 2. Left: $B-R$ versus R diagram of galaxies in in A963_1. The red sequence fit is shown by the solid line. Red-sequence galaxies (red diamonds) are defined to be at most ± 0.25 mag bluer than the red sequence fit (dotted line). The blue-cloud galaxies (blue circles), are thus located below the dotted line. Right: NUV-optical CMD showing the red-sequence and blue-cloud galaxies defined in the left-hand panel, and dotted lines separating regions (NUV- r colour ranges) that correspond to different stellar-population ages, as labelled (see the text for description). In both panels H I detections are highlighted with open blue squares.

Table 1. The galaxy subsamples used in this paper, split by their optical colours, as defined in the left-hand panel of Fig. 2. The columns are: sample name (‘Red’ and ‘Blue’, corresponding to the red sequence and blue cloud), number of galaxies, number of galaxies in the mass-limited sample ($M_* > 10^{10} M_\odot$), total number of H I-detected galaxies.

	No. gals.	No. massive gals.	No. H I-detec.
Red	128	109	1
Blue	118	49	65

The colour classification shown in the left-hand panel of Fig. 2 provides an indication of the ages of the stellar populations in these galaxies. The majority of red-sequence galaxies, for instance, are expected to have stopped forming stars, while blue galaxies are still hosting star formation and thus contain a significant fraction of young stellar populations. In Fig. 2, we have also highlighted the location of H I-detected galaxies. As expected, these populate the blue cloud.

Table 1 lists the sizes of the total ‘blue’ and ‘red’ galaxy samples, as well as the number of galaxies in the mass-limited and H I-detected samples. All the galaxies listed in Table 1 (and used in this paper) are spectroscopically confirmed members of A963_1.

The right-hand panel of Fig. 2 shows the UV-optical CMD. UV is very sensitive to the ages of young stellar populations. It is therefore helpful to utilize NUV-optical colours as a tool to roughly infer the ages of the young stellar component in the galaxies. We do this by inspecting the NUV- r colour evolution in a single-stellar population model of solar metallicity from Bruzual & Charlot (2003)². We adopt the same x -axis range, symbols and colour-code as in the left-hand panel to easily locate the red-sequence and blue-cloud galaxies previously defined in optical bands. As expected, the galaxies spread over a larger range in colour in the UV-optical CMD. We choose three NUV- r colour bins that correspond to the ages of a single stellar population of <300 Myr; 300–600 Myr; >600 Myr, at the redshift of A963_1. These bins are identified by the dotted lines in the right-hand panel of Fig. 2. We

emphasize that these lines should only be treated as good reference values, and not exact ages of the stellar populations. We note that we did not consider internal extinction in our computation, but we use these colour cuts only as a lower limit for a given age of the young single stellar population. We will use these colour bins in the analysis of Section 4.3.

3 A PHASE-SPACE VIEW OF A963_1

To investigate the dynamical state of the cluster under study and infer (statistically) the orbital histories of the different galaxy populations, we have constructed line-of-sight velocity versus radial position phase-space diagrams for the spectroscopically confirmed members of A963_1, as shown in Fig. 3. The x -axis of the plot shows the projected distance from the cluster centre, r , normalized by R_{200} , while the y -axis displays the peculiar line-of-sight velocity of each galaxy with respect to the cluster recessional velocity (Δv), normalized by the velocity dispersion of the cluster. In particular, we plot the absolute value, taking advantage of the symmetry in the velocity distribution of the cluster. This is

$$\frac{|\Delta v|}{\sigma} = \frac{|c(z - z_{cl})|}{(1 + z_{cl})\sigma}, \quad (1)$$

where z is the redshift of a given galaxy, z_{cl} the redshift of the cluster, and c the speed of light.

One can think of the position of galaxies in PPS as lower limits to their real 3D radius and velocity values. In other words, a galaxy cannot be at a smaller radius as it appears in projection. Likewise, it cannot have a smaller velocity difference than its line-of-sight velocity difference.

The grey contours in Fig. 3 reflect the galaxy number density distribution in phase-space. This plot represents a snapshot (at the observed redshift) of the cluster assembly process, where infalling galaxies come towards the cluster at large radii, gaining velocity as they reach the cluster centre. They will then settle into the cluster, partly by means of dynamical friction (which is especially important for high-mass galaxies), creating the dense ‘wedge’ in PPS, as we will see in Section 4.2. The overall distribution of cluster galaxies in PPS thus arises from ‘virialization’, and it is constrained by the radial dependence of the escape velocity in PPS. This is shown by the dashed black line, that corresponds to the escape velocity in a

² We note that our results do not change if we use the models from Starburst99 (Leitherer et al. 1999).

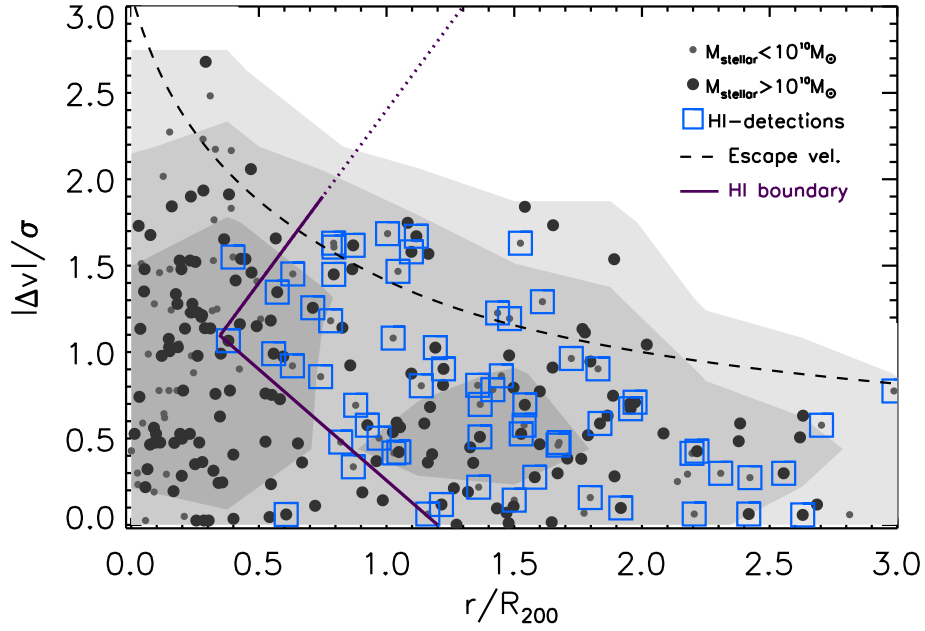


Figure 3. The observed PPS diagram for the spectroscopically-confirmed member galaxies in A963_1. Galaxies in the mass-limited sample ($M_* > 10^{10} M_\odot$) are represented with darker and larger filled symbols, HI-detected galaxies are enclosed by a blue open square, and the grey contours follow the number density of the galaxies. The dashed black line corresponds to the escape velocity in an NFW halo (see the text for details). The solid purple line delimits the region (right of the line) containing the vast majority of the HI-detections in the cluster.

Navarro, Frenk & White (1996, NFW) halo, projected to the line of sight. This is

$$v_{\text{esc}} = \begin{cases} \sqrt{\frac{2GM_{200}}{3R_{200}} K} & r < R_{200} \\ \sqrt{\frac{2GM_{200}}{3R_{200}^s}} & \text{otherwise,} \end{cases} \quad (2)$$

where

$$K = g_c \left(\frac{\ln(1 + cs)}{s} - \ln(1 + c) \right) + 1 \quad (3)$$

$$s = \frac{r_{3D}}{R_{200}} \sim \frac{\pi}{2} \frac{r}{R_{200}} \quad (4)$$

$$g_c = \left[\ln(1 + c) - \frac{c}{(1 + c)} \right]^{-1} \quad (5)$$

and c is the concentration parameter, which we fixed at $c = 6$ (the exact value of c does not change the results significantly). Note that the 3D radius scales with the projected r , with scatter, as $r = \cos(\varphi)r_{3D}$, where φ is the projection angle, that can vary between 0 and $\pi/2$. Therefore, on average, $r \sim \frac{2}{\pi}r_{3D}$. We also projected the 3D escape velocity (v_{esc}) to a line-of-sight escape velocity (v) using the average conversion factor ($\sqrt{3}$). Inevitably, the projections (i.e. in both v and r) lead to increased scatter in PPS. In the figure, we have further normalized v to the velocity dispersion of A963_1. Galaxies inside the dashed black line in Fig. 3 are expected to be gravitationally bound to the cluster.

The ‘virialized’ region of the cluster is roughly located at $r \lesssim R_{200}$ and $\Delta v < 1.5\sigma$ (see e.g. Mahajan et al. 2011), although the shape of the virialized region is best approximated by a triangle, rather than a square (as will be shown in Figs 4, 5, 7 and 9). 70 per cent of the galaxies inside this region have been inside the cluster ($r_{3D} < R_{200}$)

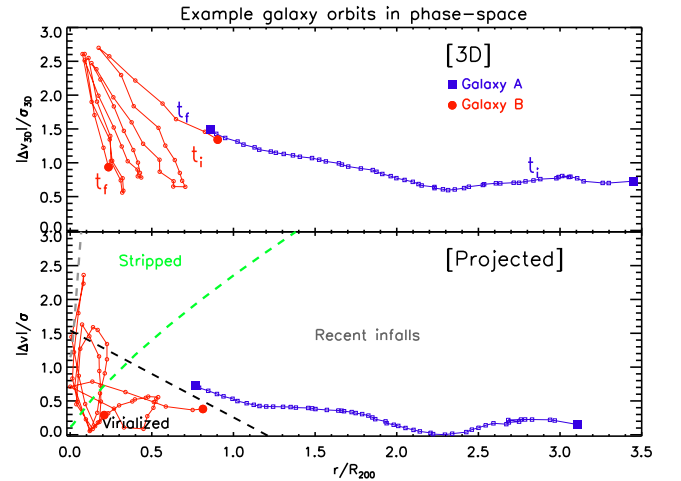


Figure 4. The orbit tracks in 3D (top) and projected (bottom) phase-space of two massive galaxies randomly extracted from the simulations. The points correspond to different time-steps in the simulation. The first point in each case is labelled with t_i , which corresponds to 7.942 Gyr before the final snapshot, t_f , also labelled. In the bottom panel, the dashed grey line indicates the area in PPS (left of the line) where an MW-like galaxy is expected to be completely stripped as it falls into the cluster. The dashed green line instead delimits the area where the model galaxies are stripped enough to fall out of the detection limit of our survey. The dashed grey line indicates the region of complete gas stripping, and the dashed black line indicates the region where galaxies are most likely to have been in the cluster for more than a pericentric passage (i.e. the ‘virialized’ region). The region to the right of all dashed lines thus contains galaxies that have most likely recently joined the cluster. Clearly, at t_i Galaxy A was falling in to the cluster for the first time, while Galaxy B had already crossed R_{200} . As time passes, galaxy B oscillates in position and velocity drawing a ‘wedge’ in phase-space (inside the ‘virialized’ region). This is what will happen to galaxy A after enough time has passed.

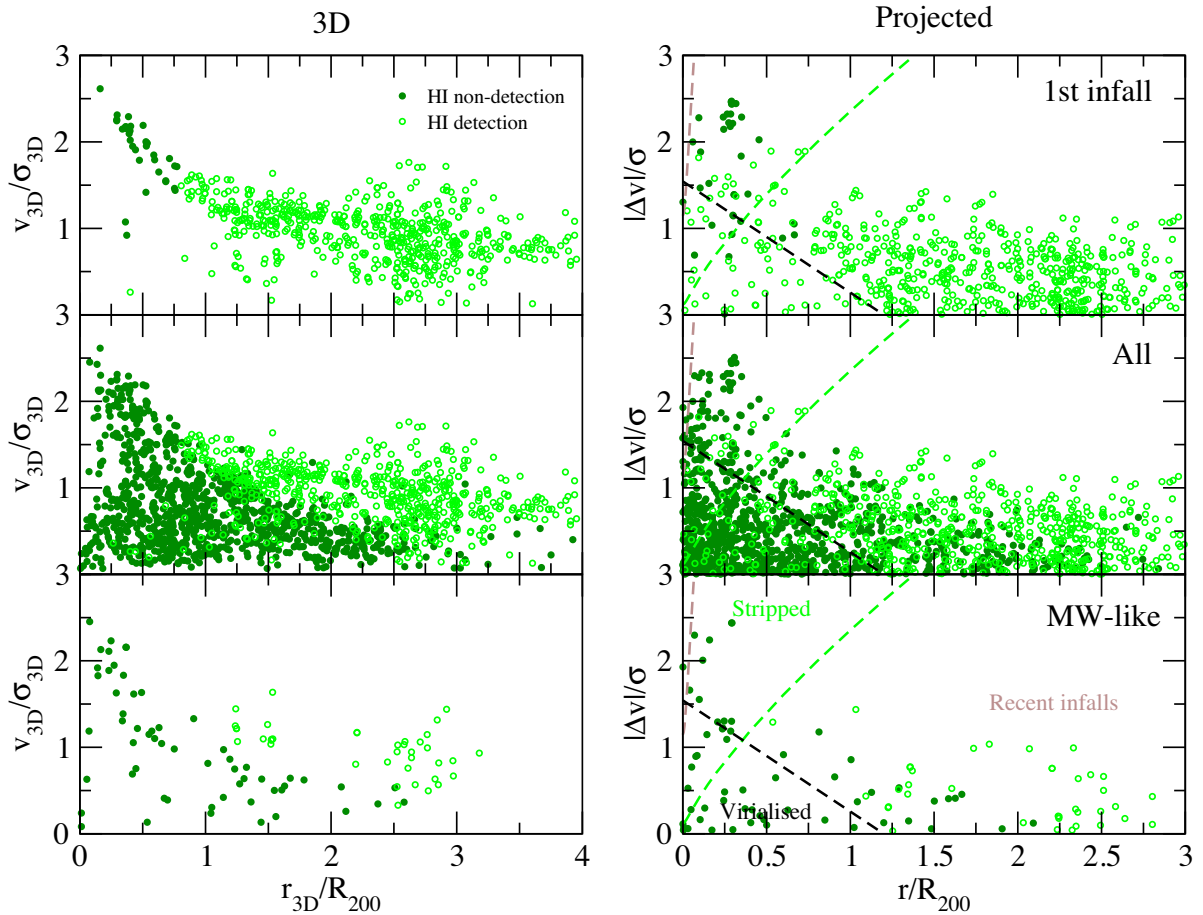


Figure 5. The 3D (left) and projected (right) phase-space of the simulated cluster galaxies. The top panels show galaxies that are infalling into the cluster for the first time. They clearly occupy the region in phase-space close to the cluster ‘envelope’ and far away from its core. The middle panels show all (virialized and infalling) galaxies, which occupy the entire trumpet-shaped area of phase-space. At the bottom, we show only massive galaxies (i.e. with masses similar to that of our MW prototype). In the right-hand panels, we further indicate the regions defined in Fig. 4.

for more than 4 Gyr, which corresponds to the crossing time³ of our cluster. In other words, the virialized region contains galaxies that have most likely experienced many pericentric passages.

In the PPS of Fig. 3, we have distinguished low-mass galaxies from more massive ones with symbol sizes, and we can see that low- and high-mass galaxies are roughly evenly distributed across PPS in the cluster (although there are regions notably dominated by massive galaxies, such as $0.3 \lesssim r/R_{200} \lesssim 1$ and $|\Delta v|/\sigma \lesssim 0.7$). This is not necessarily a real effect but perhaps reflects the spectroscopic incompleteness of the low-mass galaxy sample. Although we always plot all galaxies for reference, it is important to be aware that a significant assessment of the incidence of different galaxy populations can only be done in the mass-limited (or spectroscopically complete) sample. For this reason, we mostly focus on the high-mass galaxies, plotted with bigger symbols in our analysis.

In Fig. 3, we also highlight, for the moment, H I-detected galaxies (blue squares) as these observations are the core of the survey. Later, in Figs 7 and 9, we will see how other galaxy properties are distributed in PPS. It is clear that the H I-detected galaxies are located outside the cluster virialized region and that there is also a notable lack of H I-detections outside the virialized region at high

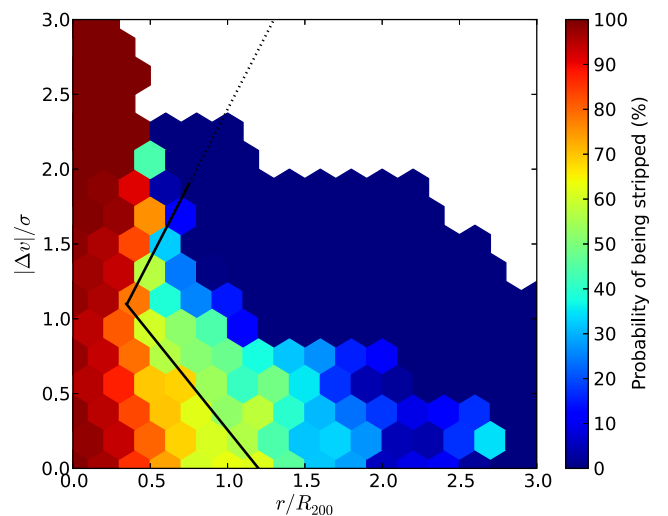


Figure 6. Distribution in PPS of the probabilities that an MW-type galaxy has been stripped enough to be undetected by BUDHIES in a cluster with the ICM model of A963_1. The red-orange areas trace the regions where galaxies have most likely been stripped of their H I gas. The thick black line is the same as in Fig. 3, that shows the boundary between the region where most H I-detected galaxies are (right of the line) and the region without H I-detections (left of the line).

³ A ‘crossing time’ refers to the time that an infalling galaxy takes to cross from $r = R_{200}$ to the other side of the cluster.

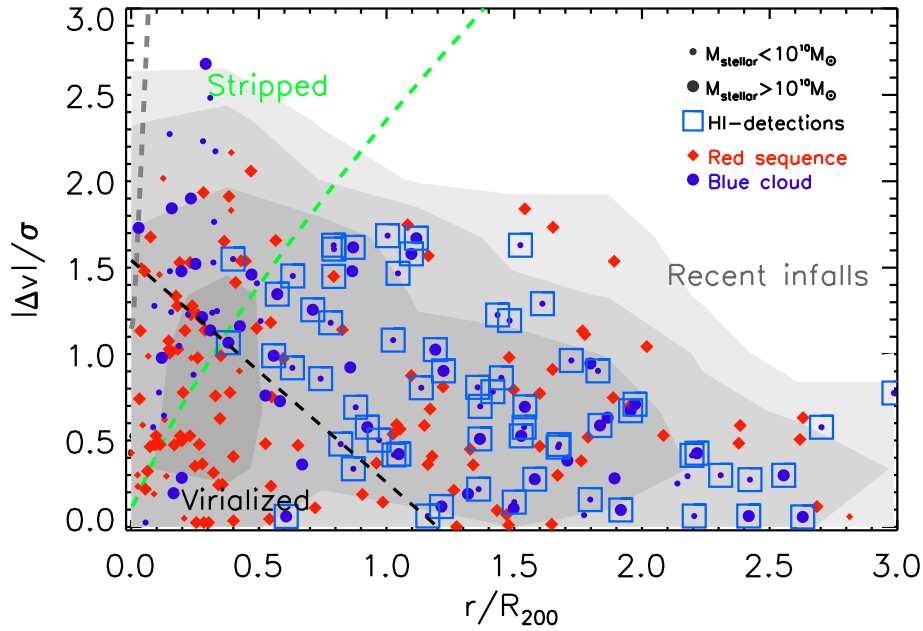


Figure 7. The same PPS as in Fig. 7 is shown, but with added information: As before, galaxies in the mass-limited sample ($M_* > 10^{10} M_\odot$) are represented with larger filled circles, H I-detected galaxies are enclosed by a blue open square, and grey contours follow the number density of the galaxies. In addition, galaxies are divided into red-sequence (red diamonds) and blue cloud (blue circles), as defined in the top panels of Fig. 2. The dashed grey line delimits the area in PPS (left of the line) where an MW galaxy is expected to be completely stripped as it falls into the cluster. The dashed green line delimits the area (to the left of the line) where the model galaxies are stripped enough to fall out of the detection limit of our survey (see Section 4.2). As in previous figures, the additional dashed black line indicates the region in PPS where galaxies are most likely to have been in the cluster for more than a pericentric passage (i.e. the ‘virialized’ region). The region to the right of all dashed lines thus contains galaxies that have most likely recently joined the cluster.

velocities and small radii. We indicate with the solid purple line in Fig. 3, the boundary between the ‘H I-rich’ region (right of the line) and the region devoid of H I-detections (or ‘H I-poor’, left of the line). Note that this line was drawn by eye, as reference. The cause of this segregation between the H I-detected and non-detected galaxies will be thoroughly investigated in the following sections.

We emphasize that all H I-detected galaxies were plotted in this diagram, no H I mass cut was assumed. However, the effect of the primary beam attenuation of the WSRT translates into a variation of the H I-mass limit with distance from the pointing centre. We will describe these effects in Verheijen et al. (in preparation). It is remarkable that we see strong decline of the incidence of H I-detected galaxies towards the cluster centre (see also Fig. 8) despite this effect, which makes H I harder to detect at larger radii.

4 THE IMPACT OF RAM-PRESSURE STRIPPING IN PPS

4.1 Ram-pressure stripping model

To explain the segregation of H I-detected galaxies in PPS (Section 3), we explore the effect of ram-pressure stripping in A963_1. We do this by creating a simple model, based on the analytic description provided in Gunn & Gott (1972). In particular, following Hernández-Fernández et al. (2014), we compute the ‘intensity’ (η) of ram-pressure (P_{ram}) exerted by the ICM on an infalling galaxy, as the ratio of such pressure over the anchoring self-gravity provided by the galaxy (Π_{gal}). That is, $\eta = P_{\text{ram}}/\Pi_{\text{gal}}$.

We model the ICM gas density profile of the cluster with the standard β -model (Cavaliere & Fusco-Femiano 1976) as

$$\rho_{\text{ICM}}(r_{3\text{D}}) = \rho_0 \left[1 + \left(\frac{r_{3\text{D}}}{R_c} \right)^2 \right]^{-3\beta/2}, \quad (6)$$

where, as before, the 3D radius scales with the projected r , with scatter, as $r \sim \frac{2}{\pi} r_{3\text{D}}$.

Now, the ram-pressure is defined as

$$P_{\text{ram}} = \rho_{\text{ICM}} v_{\text{gal}}^2 \quad (7)$$

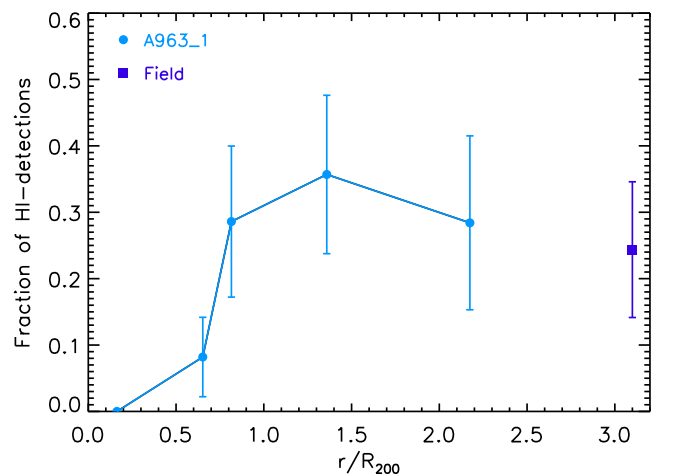


Figure 8. Fraction of H I-detected galaxies in A963_1 as a function of r/R_{200} (solid blue line). The blue square at (arbitrarily) large radii corresponds to the field fraction in BUDHIES, for comparison.

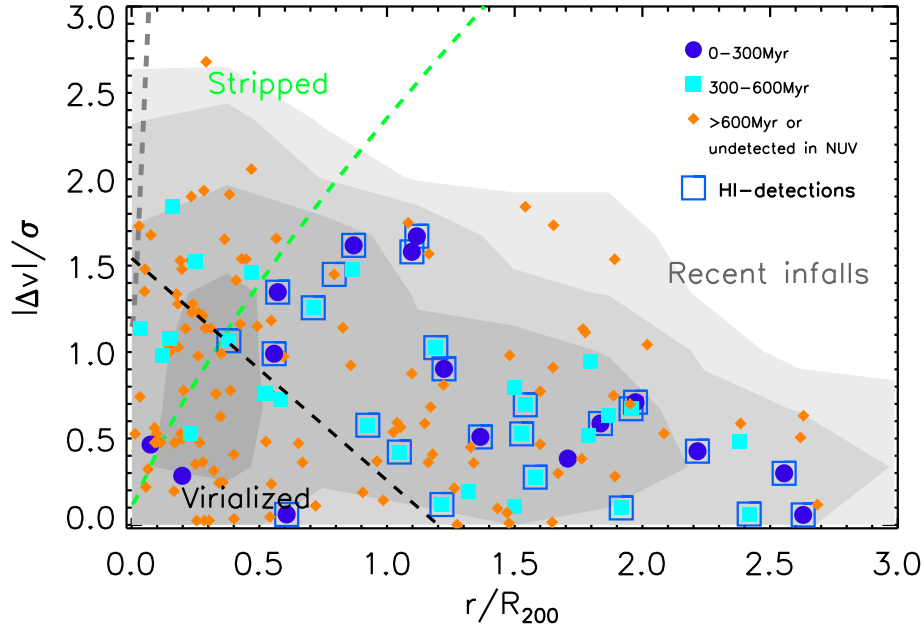


Figure 9. The same PPS of Fig. 7 is shown, but only for massive galaxies ($M_* > 10^{10} M_\odot$), this time colour-coded (and differentiated by symbols) by the stellar-population ages, inferred from their NUV– r colours (see Section 2.3.2), as labelled. HI-detections are highlighted with blue open squares. Lines are as in Fig. 7.

Table 2. Parameters of the β -model for A963_1, used to compute the intensity of ram-pressure as a function of distance from the cluster centre. The values were taken from Rizza et al. (1998).

A963_1's ICM model	
β	0.5
R_c	65 kpc
ρ_0	$14.7 \times 10^{-3} \text{ cm}^{-3}$

Table 3. Values used to compute the restoring force in the disc of an MW-type galaxy.

	Value	Reference
$M_{d,\text{stellar}}$	$4.6 \times 10^{10} M_\odot$	Bovy & Rix (2013)
$M_{d,\text{gas}}$	$\sim 0.06 \times M_{d,\text{stellar}}$	Gavazzi et al. (2008)
$R_{d,\text{stars}}$	2.15 kpc	Bovy & Rix (2013)
$R_{d,\text{gas}}$	$1.7 \times R_{d,\text{stars}}$	Cayatte et al. (1994)

Again, v_{gal} is the velocity of the galaxy in 3D, which we also project to the line-of-sight velocity, v .

We then model the galaxy's anchoring pressure, Π_{gal} , as:

$$\Pi_{\text{gal}} = 2\pi G \Sigma_s \Sigma_g, \quad (8)$$

where Σ_s and Σ_g are the density profiles of the stellar and gaseous discs, respectively. We assume an exponential profile for the disc:

$$\Sigma = \Sigma_0 e^{-r'/R_d} \quad (9)$$

where r' is the radial distance from the centre of the galaxy, R_d is the disc scalelength, and Σ_0 the central surface density of the galaxy:

$$\Sigma_0 = \frac{M_d}{2\pi R_d^2}, \quad (10)$$

where M_d is the mass in the disc.

We adopt the β -model parameters from Rizza et al. (1998) to compute ρ_{ICM} for A963_1 (and hence P_{ram}). These values are listed in Table 2.

Finally, we construct a disc galaxy model to test the effect on ram-pressure on it. The values used to model the galaxy's anchoring force (listed in Table 3) are a reasonable representation of a Milky Way (MW)-like disc galaxy. Throughout the rest of this paper, we thus refer to the model as an 'MW' model. Note that the stellar mass of this test galaxy corresponds to the most typical mass in our

mass-limited sample (see dotted blue lines in Fig. 1). Using these values, we obtain $\Pi_{\text{gal}} = 1.24 \times 10^{-11} \text{ N m}^{-2}$ at the centre of the galaxy (i.e. at $r' = 0$, where the restoring force is the strongest). Note that this value is smaller than the one used by Hernández-Fernández et al. (2014).

We can now predict the region in PPS where ram-pressure is expected to strip the gas off the MW-like galaxy in A963_1, i.e. the case where $\eta = 1$. Jumping ahead to the bottom panel of Fig. 4 (or Figs 5, 7, and 9), we can see the case of complete stripping ($r' = 0$) plotted as a grey dashed line at very small r in PPS. Galaxies infalling into the cluster (from the right-hand side of the line towards the cluster centre), will eventually cross this line, losing their gas reservoirs. This line thus constitutes a good measure of the presence of HI in PPS. However, because our HI observations have a detection limit of $\sim 2 \times 10^9 M_\odot$, there will be some galaxies that will fail to be detected before the gas disc is truncated all the way down to $r' = 0$. In other words, we expect to stop seeing HI-detections at larger r/R_{200} than the grey dashed line predicts. To account for this effect, we have recomputed Π_{gal} at the truncation radius at which an MW galaxy would fall below BUDHIES' HI detection limit. The truncation radius, $r_t > 0$, is computed from the remaining gas mass in the galaxy, $f = \frac{2 \times 10^9 M_\odot}{M_{\text{gas}}}$, following:

$$f = 1 + \left[e^{-r_t/R_d} \left(\frac{-r_t}{R_d} - 1 \right) \right]. \quad (11)$$

Solving for r_t , we obtain a value of 6.1 kpc, which yields the new Π_{gal} at $r' = r_t$, shown by the dashed green line in Fig. 4 (and Figs 5, 7 and 9). Galaxies to the left of this line are thus expected to have been stripped enough to fall below our detection limit. We call this region the ram-pressure stripping cone.

For future reference and application to other systems, in Appendix A we have explored how much the cluster and galaxy model affect the mapping of the effect of ram-pressure stripping in PPS. Interestingly, we find that the effectiveness of ram-pressure in PPS does not vary much with galaxy mass (except for the most massive galaxies). We will come back to this in Section 4.3.

We also note there are several caveats to our ram-pressure stripping model that need to be considered for the analysis. To start, our model depends on at least six variables (three spatial and three in velocity), and we are probing its effects in two dimensions. Some scatter in PPS due to projection effects (in both radius and velocity) is thus expected. We also note that, despite the simplicity of Gunn & Gott's prescription, their model has been validated by many simulations. Although it is well known that their formula is best at predicting the stripping radius in the case of face-on stripping, other inclination angles (with respect to the infall trajectory) can lead to more complex behaviour (e.g. Abadi, Moore & Bower 1999; Vollmer et al. 2001). However, the amount of stripping is only significantly altered for nearly edge-on galaxies (Roediger & Brüggén 2006). Finally, observations and simulations of galaxies in clusters have revealed that it is possible to have gas stripping at larger radii than what Gunn & Gott (1972) predict (e.g. Kenney, van Gorkom & Vollmer 2004; Tonnesen, Bryan & van Gorkom 2007), due to the presence of non-smooth substructure in the ICM, which translates into scatter in ram-pressure strength at fixed radius. As mentioned in Section 2.2, we will combine the BUDHIES data with deep X-ray observations to thoroughly investigate this scenario in a future paper.

Despite all the aforementioned caveats, in Section 4.3 we will show how the distribution of H I-detected galaxies in PPS is in exceptionally good agreement with the prediction from our simplified model.

4.2 Cosmological simulations

The recipe described in Section 4.1 is a good measure of the velocity and radial dependence of stripping for galaxies on their first infall. However, in PPS we have a mixture of galaxies that are infalling, and others that have been in the cluster for several pericentric passages. To predict the location in PPS where we expect to find stripped galaxies (virialized or infalling), we apply our simple ram-pressure model to dark matter haloes orbiting in the potential of a cluster formed in a cosmological model. The advantage of doing this is that one can trace back the galaxies to study how they build up the cluster (and thus PPS).

We use the high-resolution cosmological N -body simulations, fully described in Warnick & Knebe (2006) and Warnick, Knebe & Power (2008), which were run with the adaptive mesh refinement code MLAPM (Knebe, Green & Binney 2001). These simulations used approximately one million dark matter particles, each with a mass of $1.6 \times 10^8 h^{-1} M_\odot$, while the spatial force resolution was $\sim 2 h^{-1}$ kpc. The haloes were found using AHF, a parallelized version of the MHF algorithm of Gill, Knebe & Gibson (2004). The minimum particle number allowed for a halo was set at 20, leading to a minimum resolved halo mass of $\sim 3 \times 10^9 M_\odot$.

To emulate A963_1 as much as possible, we chose the cluster 'C1' from table 1 of Warnick & Knebe (2006), as it is the most

massive cluster in these simulations. The virial mass and radius for that cluster are $M_{\text{vir}} = 2.9 \times 10^{14} M_\odot$, and $R_{\text{vir}} = 1.355$ Mpc, and the formation redshift $z_f = 1.052$ Gyr, which is equivalent to an age of ~ 8 Gyr.

We follow the orbits of individual haloes in the cluster, as shown in the examples in Fig. 4. This figure not only shows the typical trajectories of galaxies in phase-space as they fall (and eventually settle) into the cluster, but also reveals the distortions that can appear due to projection effects. For each halo, we measure the time-evolving ram-pressures, assuming the β -model presented in Section 4.1 (see Table 2 in particular). We assume the haloes contain an MW-like disc with the same properties listed in Table 3, and flag them as 'stripped' (i.e. non-detected in H I) once they have been truncated down to r_t and have thus fallen below the detection limit of our survey.

In the top panels of Fig. 5, we plot the final positions (at $z=0$) in a phase-space diagram, using only the haloes that are infalling into the cluster for the first time, and distinguish the 'H I detected' (open light green circles) from the 'non-detected' or stripped galaxies (filled dark green circles). It is noticeable how galaxies drop out of our detection limit as they pass through the ram-pressure stripping cone described in Section 4.1 (area left of the green dashed line in the right-hand panels of Fig. 5). This effect is visible in both 3D and PPS, although it is less distinct in projection. In the middle panels of the figure, we plot all haloes (infalling and virialized), and see that the non-detected galaxies are not only in this cone, but elongate along a 'wedge', as indicated by the dashed-black line in PPS. This line is not an exact boundary, but a rough indication of the region where galaxies have a higher probability of having been in the cluster for more than a pericentric passage.

From Fig. 5, we can see how the position of the simulated galaxies in PPS evolve with cosmic time. On first infall, the galaxies distribute along the escape-velocity caustic we saw in Fig. 3, avoiding low r and low v values (top panels of Fig. 5). As the cluster evolves and becomes virialized, the galaxies cluster in the low r and low v region, as shown in the middle panels of the figure (filled darker symbols, see also example orbits in Fig. 4). This shows the capability of PPS to predict, in a statistical sense, the time since infall of cluster galaxies.

In order to ensure that dynamical friction is of the correct magnitude in our results, we subsample our haloes, creating an 'MW-like' subsample with initial halo mass: $0.25 \times 10^{11} - 7.5 \times 10^{12} M_\odot$. This approximately selects haloes with the correct mass to match the stellar mass of our MW-like model (see equation 3 in Guo et al. 2010). There are 96 in total in this mass range (bottom panel of Fig. 5). By subsampling our haloes, we are also assuring that there is a good match between the disc mass and the haloes, although the general trends observed in the middle and bottom panels of Fig. 5 are not dissimilar. To be safe, however, we only use the sample plotted in the bottom panels in our analysis.

To project the 3D phase-space, we randomize the line of sight to the cluster, spinning the cluster by a random angle about the x -axis, then another random angle about the y -axis. The line of sight is then chosen down the z -axis, with $r = \sqrt{x^2 + y^2}$, and $v_{\text{los}} = v_z$.

Then, we compute the probability, per PPS bin, that a galaxy has been stripped. To do this, we spin the cluster 1000 times and build up an average in each pixel of the PPS diagram (fraction of H I non-detected to the total number that lie in that pixel). This is shown in Fig. 6, where red-orange regions trace the highest probabilities for a galaxy to have been stripped. In the figure, we have overplotted the line separating H I-detections from non-detections in the observed PPS shown in Fig. 3. The model predictions for

Table 4. Fraction (in per cent) of different galaxy populations in the different regions of PPS. Following the column order: (1) the ram-pressure stripping cone (left of green dashed line in figures), (2) the virialized region (below black dashed line), (3) the combination of both of these regions (which coincides with the ‘H I-poor’ region of Fig. 3), (4) the ram-pressure stripping cone region excluding the overlapping area of the virialized zone, and (5) the region mostly populated with galaxies recently accreted to the clusters (right of dashed lines, which coincides with the ‘H I-rich’ region of Fig. 3). f_r and f_b are the fractions of red and blue galaxies, respectively, whilst $f_{b,H I}$ refers to the population of H I-detections within the blue galaxies. The last three rows show: $f_{UV,blue}$, the fraction of galaxies in the bluest NUV– r colour bin, or youngest stellar populations (0–300 Myr); $f_{UV,green}$, the intermediate-colour bin (300–600 Myr); and $f_{UV,red}$, the reddest bin, that also contains galaxies that are not detected in NUV (>600 Myr), as defined in Fig. 2. All fractions were corrected for spectroscopic completeness, considering the mass-limited sample only.

	Stripping cone	Virialized	Stripping+Virialized (‘H I-poor’ zone)	Stripping–Virialized	Virialized–Stripping	Recent infalls (‘H I-rich’ zone)	Figure
f_r	79	83	80	72	80	59	7
f_b	21	17	20	28	20	41	7
$f_{b,H I}$	0	14	9	0	20	67	7
$f_{UV,blue}$	4	7	5	6	6	15	9
$f_{UV,green}$	14	11	11	12	9	25	9
$f_{UV,red}$	82	82	84	88	85	60	9

where the effect of ram-pressure is strongest in PPS is in striking agreement with our observations, qualitatively reproducing the region in PPS where there are no H I-detected galaxies (left of the line). Although the results shown in Fig. 6 were computed specifically for MW-type galaxies in a massive cluster (like A963_1), and assumed the H I detection threshold of BUDHIES, this PPS probability map can be used in other cluster studies as a guideline for where ram-pressure will be at play, provided the galaxy and cluster properties are not dramatically dissimilar from this study (see Appendix A). The virialized ‘wedge’ will not change significantly. What will mostly change is the location of the ram-pressure stripping cone, that depends on the truncation radius (or H I detection limit).

4.3 The effect of ram-pressure in H I stripping

In this section, we combine the results of the previous sections, to link the effect of ram-pressure stripping with the orbital histories of galaxies in the studied cluster.

Fig. 7 shows the PPS of galaxies in A963_1. As in Fig. 3, galaxies of different masses are shown with different symbol sizes, where the larger symbols correspond to the mass-limited sample. H I-detections are highlighted as before. We also distinguish between red-sequence and blue-cloud galaxies (defined in Fig. 2). As in previous figures, the area to the left of the dashed green line indicates the ram-pressure stripping cone where galaxies will fall below our detection limit (see Section 4.1), while the grey dashed line delimits the region of complete gas stripping. The area below the black dashed line instead, represents the ‘virialized’ zone, and the area outside the stripping and ‘virialized’ regions thus contains galaxies that have recently joined the cluster, as labelled. In Table 4, we further list the fraction of different galaxy populations (for the mass-limited sample only) in all the regions of PPS defined.

The most striking result of Fig. 7 is that both the stripping and virialized areas are almost completely devoid of H I-detections, and that their combined areas remarkably coincide with the region where simulated galaxies that have been stripped of their gas are located in PPS (left of line in Fig. 6), regardless of their time since infall. Note that the stripped and ‘virialized’ regions are not only devoid of H I-detections, but are also dominated by red galaxies (especially when considering the ‘virialized’ region without the overlapping stripped cone, see Table 4). This is consistent with galaxies aging

as they spend more time in the cluster. The ‘Recent infall’ region on the other hand is full of blue galaxies, likely coming from the field, as well as a significant fraction of red cluster members.

Taking the mass-limited sample, we find that only a minority of the few blue galaxies in the ‘stripped’ and ‘virialized’ regions (or ‘H I-poor’ region) are detected in H I (9 per cent). Inversely, outside these regions (in the zone of ‘recent infalls’), we see that the majority of the blue cluster galaxies are detected in H I (67 per cent). Our results strongly suggest that field galaxies (typically blue, gas-rich, star-forming spirals) that enter a massive cluster, will experience H I gas stripping on their first infall (i.e. first passage through the ram-pressure stripping cone), and that the intensity of the ram-pressure they experience is sufficient to make them undetectable by BUDHIES.

Although our galaxy sample is very incomplete at $M_* < 10^{10} M_\odot$, it is interesting to note that the ‘H I-poor’ region seems to be the same for low- and high-mass galaxies. This is consistent with the results shown in Appendix A, where we found that variations in the mass of the model galaxy does not change significantly the predicted regions in PPS where ram-pressure stripping is most effective (except for very massive galaxies that are harder to strip). These two findings thus suggest that the orbital histories of the galaxies in the cluster are more important than their mass, to determine the amount of stripping they have experienced.

As mentioned above, there is a noticeable fraction of red (and H I-poor) galaxies in the ‘recent infall’ region of PPS (59 per cent, see Table 4), as well as some blue galaxies that are not detected in H I (33 per cent). The presence of stripped galaxies in the cluster outskirts is not a new finding. In the Virgo cluster, strongly stripped H I discs have been observed in the outskirts (Crowl & Kenney 2008). Their morphologies and stellar populations, together with an observational estimate of their orbital histories, suggest these galaxies have been stripped in the outskirts of clusters, before crossing the centre (Kenney et al. 2004; Crowl & Kenney 2008; Chung et al. 2009).

Using cosmological simulations of cluster formation and evolution, Tonnesen et al. (2007) found that although gas stripping occurs primarily in the central region of clusters, it is an important mechanism out to the virial radius. This is due to the wide scatter in ram-pressure strength that galaxies can experience at fixed radius. They also point out that the time-scale for complete gas removal is ≥ 1 Gyr, and that galaxies in the cluster periphery ($r > 2.4$ Mpc)

often accrete cool gas. More recent simulations by Cen, Pop & Bahcall (2014) further highlight the fact that the cluster environment can have an impact on the gas content of galaxies out to large radii, and that galaxies lose their cold gas as they fall into clusters, within a single radial round-trip. It is still unclear, however, whether the observational evidence for ram-pressure stripping outside clusters is related to the non-smooth density distribution of the ICM.

An alternative explanation for the presence of quenched galaxies⁴ in the cluster outskirts (in PPS) is that not all of the galaxies in the outskirts of the cluster are necessarily falling in for the first time, but backsplashing instead. The amplitude of the backsplash after first infall and the time they will take ‘virializing’ depend on a number of factors, which makes the identification of backsplash galaxies in PPS very difficult. In fact, the regions where these galaxies tend to be found also host other galaxy populations, such as galaxies on their first infall or older cluster members (e.g. Oman et al. 2013). This means that backsplashing is not a dominant effect at any particular PPS location. In particular, backsplashing is expected to be insignificant at large radii ($r \gtrsim 2 \times R_{200}$; see e.g. Bahé et al. 2013; Muriel & Coenda 2014), so it cannot account for all of the observed quenched fraction in the ‘Recent infall’ region. Moreover, our own simulations, did not show significant quenching in this area of PPS (Fig. 6), when we applied the ram-pressure stripping prescription to it. This implies that not all red galaxies outside the ‘virialized’ region can be attributed to backsplashing. An additional effect is needed to account for the high fraction of red galaxies out to the largest r . One likely possibility is that some galaxies had already been quenched by the time they fell into the cluster (e.g. though pre-processing in a previous environment). This idea is supported by the findings of Haines et al. (2007), who showed (using SDSS) that the fraction of passively evolving galaxies in the field can be as high as 50 per cent, when considering the most luminous systems. It is thus possible that some of these red galaxies in the outskirts of A963_1 were already red when accreted into the cluster from the field or a lower density environment. In fact, it is possible that a portion of these galaxies could have been ‘pre-processed’ (e.g. via mergers) in smaller groups that were accreted into the cluster. This idea is supported by our previous study of the distribution of H I-detected galaxies in the forming cluster A2192_1 (Jaffé et al. 2012). We will investigate this further in future papers by studying the H I-content of galaxies in the small infalling groups visible in X-rays (see Section 2.2).

We also compare our results with those found by Bahé et al. (2013), who recently analysed the (hot and cold) gas content and star formation rate of galaxies as a function of environment with hydrodynamic cosmological simulations. They find a significant decrease in the H I content and star formation with (3D) distance from cluster centre (r_{3D}) out to very large distances ($r_{3D} \sim 5 \times R_{200}$, which is $\sim 3 \times R_{200}$ in projection, with scatter). Leaving aside the phase-space view for a moment, and only concentrating on r/R_{200} , we get the trends shown in Fig. 8, that can be compared with those found by Bahé et al. (2013). The blue line corresponds to the fraction of H I-detected galaxies corrected for H I incompleteness caused by the WSRT’s primary beam attenuation. The correction was computed using the H I mass function of Martin et al. (2010) as reference. We note however that there might be a variation between Martin et al. (2010)’s field H I mass function at low redshift, and that

of A963_1. We ignore this effect when calculating the corrections for Fig. 8, as we expect the difference to be within the plotted Poisson errors. An in-depth assessment of the H I mass function in BUDHIES is beyond the scope of this paper. We plan, however, to investigate the H I mass function as a function of both redshift and environment in a future paper.

Despite the mentioned caveat, Fig. 8 shows that the fraction of H I-detected galaxies in the cluster clearly increases with r/R_{200} , until it reaches a plateau that matches our measurement for the field, within the errors. The general trend seen in BUDHIES is in agreement with those predicted by Bahé et al. (2013, the red line in their Fig. 2 corresponds to a cluster mass similar to that of A963_1), when considering that their r_{3D} range ($0 < r_{3D} < 5 \times R_{200}$) shrinks to our plotted range in projection. Although our H I fraction reaches the field value at smaller r , we note that the comparison can only be done qualitatively, as the absolute values of the fractions depend on their specific recipes and assumed thresholds. Measurements of H I-deficiencies in cluster galaxies at low z also show a significant environmental effect only out to $\sim 2R_{200}$ (Solanes et al. 2001), in agreement with our results. Our results however are not necessarily in disagreement with Bahé et al. (2013)’s conclusions, that evoke a combination of ram-pressure stripping, backsplashing and group-pre-processing to explain the observed trends.

4.4 Star formation quenching post H I stripping

Even if field galaxies are affected by ram-pressure stripping as they first fall into the cluster, as proposed in 4.1, an infalling galaxy that crosses the BUDHIES ram-pressure cone (green dashed line) could continue to form stars in the remaining gas disc. Only when the galaxy has been completely stripped by the ICM (if it crosses the dashed grey line, passing very near the core of the ICM, or if it crosses less dense regions of the cluster sufficient times), will its star formation rate rapidly decline, moving the galaxy from the blue cloud to the red sequence. At the same time, the galaxy will move in PPS until it settles into the virialized area. This scenario is supported by the properties of the blue galaxies inside the stripping cone, that have redder (although still blue) optical colours and on average, an earlier-type morphology (from the few available morphologies in the sample) with respect to the blue galaxies in the ‘recent infall’ region. Moreover, when stacking the spectra of the few blue galaxies in the stripped zone for which we have AF2/WYFFOS data, we see clear signs of H_δ absorption, which suggests declining star formation activity.

Turning our attention to the star formation in the stripped and non-stripped galaxies, we now analyse the location of UV-detected galaxies in PPS. In particular, it is very interesting to see where the bluer galaxies (in $NUV-r$) are located in PPS with respect to the rest. This is shown in Fig. 9 (large circles). Similarly to the H I-detected galaxies, the galaxies with the bluest $NUV-r$ colours (filled purple circles) tend to be located outside of the stripping cone, and are scarce in the ‘virialized region’ (see Table 4). This is consistent with the findings of Section 4.3, since the blueness of these galaxies suggests that they host a very young stellar component ($\lesssim 300$ Myr), as discussed in Section 2.3.2. When we consider slightly redder galaxies (those with a stellar population component that is ~ 300 – 600 Myr old, filled turquoise squares), we see that they occupy a larger area of PPS: although they are common outside the stripped area, they can also be found inside the ram-pressure stripping cone, at the higher velocities, suggesting they have not been in the cluster for a long time. It is remarkable that the very young and young galaxies are less common in the ‘virialized’ area of PPS

⁴ By ‘quenched galaxies’, we are referring to those galaxies with quenched star-formation (i.e. the red-sequence galaxies defined in Fig. 2).

(see Fig. 9 and Table 4). Finally, if we consider the redder (older) galaxies (smaller symbols), it is clear that the distribution in PPS is less segregated, although they are predominant in the virialized region. The vast majority of these galaxies (including the ones not detected in NUV) are red-sequence galaxies (see Fig. 2), so it is not surprising that their distribution in PPS mimics that of red galaxies in Fig. 7. As mentioned earlier, it is possible that some of these galaxies are indeed falling in to the cluster for the first time, but were quenched (or started to be quenched) in their previous environment.

In summary, the distribution of UV-detections in PPS proved to be a good tool to study star formation as a function of the galaxies' orbital histories. The results presented in this section, together with those presented in Section 4.3 support a scenario in which blue, star-forming, late-type galaxies falling into the cluster from the field, are stripped of their H I gas (down to at least BUDHIES' detection limit) on their first passage through the ICM. After the gas is entirely removed, the star formation is reduced and eventually quenched. This causes the 'virialized' part of the cluster (in PPS) to be populated by red and 'dead' systems. In addition, our analysis clearly shows that not all galaxies take this evolutionary route. In fact, the presence of a significant fraction of gas-poor galaxies with old stellar populations in the infall region of the cluster requires an additional mechanism other than ram-pressure stripping (see discussion in Section 4.3).

5 SUMMARY AND CONCLUSIONS

We use BUDHIES to investigate the role and time-scale of H I gas stripping and later decline of the star formation of galaxies in A963_1, a massive regular cluster at $z = 0.2$. We do this by constructing line-of-sight velocity versus projected position phase-space diagrams of the cluster galaxies out to the cluster outskirts ($\sim 3 \times R_{200}$). Using cosmological simulations, these diagrams are then used to infer (statistically) the orbital histories of the cluster galaxies.

Having a basic understanding of the cluster's assembly history allows us to more effectively study the evolution of the cluster galaxies themselves, in particular, the transformation(s) they may experience as a consequence of having joined the harsh cluster environment. We investigate the effect of environment on the galaxies by studying the phase-space distribution of their H I, optical and NUV properties. The presence/absence of H I is an excellent indicator of environmental effects that lead to gas removal (e.g. ram-pressure stripping), whilst the optical and UV colours can be used to distinguish galaxies with recent star formation from those with old stellar populations.

To interpret the observed segregation of H I-detected and non-detected galaxies in PPS, as well as the distribution of blue/red galaxies, we model the effect of ram-pressure stripping using the prescription of Gunn & Gott (1972), and adopting the H I mass limit of our survey ($\sim 2 \times 10^9 M_{\odot}$), the ICM density profile of A963_1, and the stellar masses of the observed cluster galaxies. We embed this model into the cosmological simulations so that we can study the effect of ram-pressure stripping as a function of the orbital histories of cluster galaxies. We then predict the regions in phase-space where galaxies are expected to be stripped of their gas. In particular, we create a map that shows, per phase-space bin, the probability that a galaxy has been sufficiently stripped to be undetected by our survey. The predicted map coincides strikingly well with the location of BUDHIES' H I-detected and non-detected blue (late-type) galaxies.

Our findings strongly suggest that H I gas in late-type galaxies can be stripped (down to at least the detection limit of our survey) during their first infall into the cluster. In phase-space, the stripping will occur once they have approached the dense ICM core and/or gained enough velocity to cross the 'stripping' area in phase-space (small clustercentric distances and/or high line-of-sight velocities). After this, they will oscillate in phase-space (as they bounce back and forth in the cluster, gaining and losing speed) until they settle near the cluster centre due to dynamical friction. This long ($\gtrsim 4$ Gyr) process gives rise to the dense 'virialized' region observed in PPS. During this time, the galaxies' gas reservoirs are expected to be completely exhausted, which in turn causes their star formation rates to be quenched.

To test this scenario, and to study the evolution of the stellar populations of galaxies after gas stripping, we combine the H I-observations with optical ($B - R$) and NUV (NUV- r) colours in our analysis. Although we find that galaxy colours also segregate somewhat in phase-space, the trends are less clear than when using H I. However, the 'virialized' part of the cluster is dominated by red-sequence galaxies, as expected, while the cluster outskirts or infall region has a mixed population of galaxies. Moreover, we find that optically blue galaxies are less rare than H I-detected galaxies in the 'stripped' region of phase-space. This is consistent with blue, star-forming galaxies first losing their gas reservoirs via ram-pressure stripping, and slowly declining their star formation activity, as described above. In this scenario, the 'stripped' galaxies (i.e. the ones not detected by BUDHIES) will still have blue colours for a while, until the gas is completely removed. Once this happens, the gas-poor galaxies will transit to the red sequence. The distribution of the galaxies' NUV colours in phase-space further support this scenario. In particular, we see how the bluest galaxies in NUV- r (i.e. the ones with younger stellar populations) mimic the distribution of the H I-detected galaxies, while galaxies with 'green' UV colours (intermediate-age stellar populations) are not only present in the cluster outskirts but are also found in the 'stripping' region of phase-space. Finally, the galaxies with the oldest stellar populations (reddest NUV colours or undetected in NUV) dominate the 'virialized' region of the cluster.

The described pathway to quench the star formation in galaxies is, however, not unique. In fact, an additional insightful result from our analysis is the finding of a significant population of passive (red, gas-poor, early-type) galaxies in the outskirts or infall region of the cluster, that cannot be explained by our ram-pressure stripping model, or the effect of backslashing. This finding suggests that an additional mechanism must also be at play. One possibility is that galaxies are pre-processed in their previous environment (e.g. smaller groups, or the field) before they fall into clusters. We will investigate this in more detail in future papers. We conclude, however, that if a blue, gas-rich, star-forming galaxy has not been quenched by the time it falls into the cluster, it is most likely to experience gas removal as it first passes through the cluster's ICM due to the effect of ram-pressure.

Finally, this work highlights the usefulness of phase-space diagrams to infer the orbital histories of galaxies in regular clusters, and the effect of cluster processes such as ram-pressure stripping. It should be noted, however, that this method cannot be robustly applied to very irregular (e.g. merging) clusters. Moreover, our phase-space analysis proved to be particularly insightful when using sensitive tracers of environmental effects such as H I, in combination with optical and UV data.

ACKNOWLEDGEMENTS

YJ gratefully acknowledges support by FONDECYT grant no. 3130476, and thanks Professor Alfonso Aragón-Salamanca, Kyle Oman, Chris Haines, Jacqueline van Gorkom, and Jonathan Hernandez-Fernandez for useful discussions on phase-space analysis and/or the data utilized in this paper. RS acknowledges FONDECYT grant no. 3120135, and gratefully acknowledges Professor Brad Gibson and Professor Alexander Knebe for providing access to the cosmological simulations on which the modelling in this study is based. GC and YKS gratefully acknowledge support by FONDECYT grants no. 3130480 and 3130470, respectively. Funding for the Sloan Digital Sky Survey (SDSS) has been provided by the Alfred P. Sloan Foundation, the Participating Institutions, the National Aeronautics and Space Administration, the National Science Foundation, the US Department of Energy, the Japanese Monbukagakusho, and the Max Planck Society. The SDSS Web site is <http://www.sdss.org/>. The SDSS is managed by the Astrophysical Research Consortium (ARC) for the Participating Institutions. The Participating Institutions are The University of Chicago, Fermilab, the Institute for Advanced Study, the Japan Participation Group, The Johns Hopkins University, Los Alamos National Laboratory, the Max-Planck-Institute for Astronomy (MPIA), the Max-Planck-Institute for Astrophysics (MPA), New Mexico State University, University of Pittsburgh, Princeton University, the United States Naval Observatory, and the University of Washington.

REFERENCES

- Abadi M. G., Moore B., Bower R. G., 1999, *MNRAS*, 308, 947
Abramson A., Kenney J. D. P., Crowl H. H., Chung A., van Gorkom J. H., Vollmer B., Schiminovich D., 2011, *AJ*, 141, 164
Allen S. W., Schmidt R. W., Fabian A. C., Ebeling H., 2003, *MNRAS*, 342, 287
Aragón-Salamanca A., Ellis R. S., Couch W. J., Carter D., 1993, *MNRAS*, 262, 764
Bahé Y. M., McCarthy I. G., Balogh M. L., Font A. S., 2013, *MNRAS*, 430, 3017
Balogh M. L., Morris S. L., Yee H. K. C., Carlberg R. G., Ellingson E., 1999, *ApJ*, 527, 54
Bamford S. P. et al., 2009, *MNRAS*, 393, 1324
Baum W. A., 1959, *PASP*, 71, 106
Boselli A., Gavazzi G., 2006, *PASP*, 118, 517
Bovy J., Rix H.-W., 2013, *ApJ*, 779, 115
Bower R. G., Lucey J. R., Ellis R. S., 1992, *MNRAS*, 254, 601
Bravo-Alfaro H., Cayatte V., van Gorkom J. H., Balkowski C., 2000, *AJ*, 119, 580
Bravo-Alfaro H., Cayatte V., van Gorkom J. H., Balkowski C., 2001, *A&A*, 379, 347
Bruzual G., Charlot S., 2003, *MNRAS*, 344, 1000
Cavaliere A., Fusco-Femiano R., 1976, *A&A*, 49, 137
Cayatte V., van Gorkom J. H., Balkowski C., Kotanyi C., 1990, *AJ*, 100, 604
Cayatte V., Kotanyi C., Balkowski C., van Gorkom J. H., 1994, *AJ*, 107, 1003
Cen R., Pop A. R., Bahcall N. A., 2014, *Proc. Natl. Acad. Sci.*, 111, 7914
Chung A., van Gorkom J. H., Kenney J. D. P., Vollmer B., 2007, *ApJ*, 659, L115
Chung A., van Gorkom J. H., Kenney J. D. P., Crowl H., Vollmer B., 2009, *AJ*, 138, 1741
Crowl H. H., Kenney J. D. P., 2008, *AJ*, 136, 1623
Crowl H. H., Kenney J. D. P., van Gorkom J. H., Vollmer B., 2005, *AJ*, 130, 65
De Lucia G., Weinmann S., Poggianti B. M., Aragón-Salamanca A., Zaritsky D., 2012, *MNRAS*, 423, 1277
Desai V. et al., 2007, *ApJ*, 660, 1151
Dressler A., 1980, *ApJ*, 236, 351
Dressler A., Shectman S. A., 1988, *AJ*, 95, 985
Duc P.-A., Bournaud F., 2008, *ApJ*, 673, 787
Fasano G., Poggianti B. M., Couch W. J., Bettoni D., Kjærgaard P., Moles M., 2000, *ApJ*, 542, 673
Fathi K., Allen M., Boch T., Hatziminaoglou E., Peletier R. F., 2010, *MNRAS*, 406, 1595
Gavazzi G. et al., 2008, *A&A*, 482, 43
Gavazzi G. et al., 2013, *A&A*, 553, A90
Gill S. P. D., Knebe A., Gibson B. K., 2004, *MNRAS*, 351, 399
Gómez P. L. et al., 2003, *ApJ*, 584, 210
Gunn J. E., Gott J. R. I., 1972, *ApJ*, 176, 1
Guo Q., White S., Li C., Boylan-Kolchin M., 2010, *MNRAS*, 404, 1111
Haines C. P., Gargiulo A., La Barbera F., Mercurio A., Merluzzi P., Busarello G., 2007, *MNRAS*, 381, 7
Hernández-Fernández J. D., Haines C. P., Diaferio A., Iglesias-Páramo J., Mendes de Oliveira C., Vilchez J. M., 2014, *MNRAS*, 438, 2186
Jaffé Y. L., Aragón-Salamanca A., De Lucia G., Jablonka P., Rudnick G., Saglia R., Zaritsky D., 2011a, *MNRAS*, 410, 280
Jaffé Y. L. et al., 2011b, *MNRAS*, 417, 1996
Jaffé Y. L., Poggianti B. M., Verheijen M. A. W., Deshev B. Z., van Gorkom J. H., 2012, *ApJ*, 756, L28
Jaffé Y. L., Poggianti B. M., Verheijen M. A. W., Deshev B. Z., van Gorkom J. H., 2013, *MNRAS*, 431, 2111
Kapferer W., Sluka C., Schindler S., Ferrari C., Ziegler B., 2009, *A&A*, 499, 87
Kenney J. D. P., van Gorkom J. H., Vollmer B., 2004, *AJ*, 127, 3361
Knebe A., Green A., Binney J., 2001, *MNRAS*, 325, 845
Koopmann R. A., Kenney J. D. P., 2004, *ApJ*, 613, 866
Leitherer C. et al., 1999, *ApJS*, 123, 3
Lewis I. et al., 2002, *MNRAS*, 334, 673
McGee S. L., Balogh M. L., Bower R. G., Font A. S., McCarthy I. G., 2009, *MNRAS*, 400, 937
Mahajan S., Mamon G. A., Raychaudhury S., 2011, *MNRAS*, 416, 2882
Martin A. M., Papastergis E., Giovanelli R., Haynes M. P., Springob C. M., Stierwalt S., 2010, *ApJ*, 723, 1359
Moore B., Lake G., Quinn T., Stadel J., 1999, *MNRAS*, 304, 465
Moran S. M., Ellis R. S., Treu T., Smith G. P., Rich R. M., Smail I., 2007, *ApJ*, 671, 1503
Muriel H., Coenda V., 2014, *A&A*, 564, A85
Muzzin A. et al., 2014, *ApJ*, 796, 65
Navarro J. F., Frenk C. S., White S. D. M., 1996, *ApJ*, 462, 563
Noble A. G., Webb T. M. A., Muzzin A., Wilson G., Yee H. K. C., van der Burg R. F. J., 2013, *ApJ*, 768, 118
Oman K. A., Hudson M. J., Behroozi P. S., 2013, *MNRAS*, 431, 2307
Poggianti B. M., van Gorkom J. H., 2001, in Hibbard J. E., Rupen M., van Gorkom J. H., eds, *ASP Conf. Ser. Vol. 240, Gas and Galaxy Evolution*. Astron. Soc. Pac., San Francisco, p. 599
Poggianti B. M. et al., 2006, *ApJ*, 642, 188
Rizza E., Burns J. O., Ledlow M. J., Owen F. N., Voges W., Bliton M., 1998, *MNRAS*, 301, 328
Roediger E., 2009, *Astron. Nachr.*, 330, 888
Roediger E., Brüggén M., 2006, *MNRAS*, 369, 567
Roediger E., Brüggén M., 2007, *MNRAS*, 380, 1399
Scott T. C. et al., 2010, *MNRAS*, 403, 1175
Scott T. C., Cortese L., Brinks E., Bravo-Alfaro H., Auld R., Minchin R., 2012, *MNRAS*, 419, L19
Smith G. P., Kneib J.-P., Smail I., Mazzotta P., Ebeling H., Czoske O., 2005, *MNRAS*, 359, 417
Solanes J. M., Manrique A., García-Gómez C., González-Casado G., Giovanelli R., Haynes M. P., 2001, *ApJ*, 548, 97
Taranu D. S., Hudson M. J., Balogh M. L., Smith R. J., Power C., Oman K. A., Krane B., 2014, *MNRAS*, 440, 1934
Taylor E. N. et al., 2009, *ApJS*, 183, 295
Tonnesen S., Bryan G. L., 2009, *ApJ*, 694, 789
Tonnesen S., Bryan G. L., van Gorkom J. H., 2007, *ApJ*, 671, 1434

- Verdes-Montenegro L., Yun M. S., Williams B. A., Huchtmeier W. K., Del Olmo A., Perea J., 2001, *A&A*, 377, 812
- Verheijen M., van Gorkom J. H., Szomoru A., Dwarakanath K. S., Poggianti B. M., Schiminovich D., 2007, *ApJ*, 668, L9
- Verheijen M. et al., 2010, *Proc. ISKAF2010 Science Meeting: A New Golden Age for Radio Astronomy*, p. 1, available at: <http://pos.sissa.it/cgi-bin/reader/conf.cgi?confid=112>, p. 54
- Visvanathan N., Sandage A., 1977, *ApJ*, 216, 214
- Vollmer B., 2003, *A&A*, 398, 525
- Vollmer B., Cayatte V., Balkowski C., Duschl W. J., 2001, *ApJ*, 561, 708
- Warnick K., Knebe A., 2006, *MNRAS*, 369, 1253
- Warnick K., Knebe A., Power C., 2008, *MNRAS*, 385, 1859
- Zabludoff A. I., Mulchaey J. S., 1998, *ApJ*, 496, 39
- Zhang Y.-Y., Finoguenov A., Böhringer H., Kneib J.-P., Smith G. P., Czoske O., Soucail G., 2007, *A&A*, 467, 437
- Zibetti S., Charlot S., Rix H.-W., 2009, *MNRAS*, 400, 1181

APPENDIX A: SENSITIVITY OF THE RAM-PRESSURE STRIPPING MODEL IN PPS

In this section, we study the sensitivity of our ram-pressure stripping model (Section 4.1) with variations of the cluster and galaxy model parameters.

We take A963_1 and start by considering the case of an MW galaxy that is completely stripped: truncation radius $r' = 0$ and $\eta = 1$, which corresponds to the dashed green line in the top panel of Fig. A1 (same as dashed grey line in Figs 4, 5, 7, and 9). This line separates the region where P_{ram} is able to strip all the gas in the modelled galaxy (left of the line, $P_{\text{ram}} > \Pi_{\text{gal}}$) from the area where the anchoring force of the galaxy is still able to hold on to some of the gas (right-hand side, $P_{\text{ram}} < \Pi_{\text{gal}}$).

Now, what happens if P_{ram} is bigger or smaller than the value computed for A963_1? Or when Π_{gal} differs from that of the MW? We illustrate this with the different lines in the top panel of Fig. A1. The lines correspond to different values of η , as indicated by the legend. For example, the blue line shows the region where P_{ram} is 10 times higher than in A963_1 (alternatively, it could also be the case of a galaxy with Π_{gal} 10 times smaller than the MW, in an A963_1 cluster). The red line instead corresponds to a cluster with ram-pressure five times weaker. This set of values attempts to account for the variation of Π_{gal} and ρ_{ICM} . As the figure shows there is a very small amount of variation, when considering variations of the order of 10 (blue and red lines). Significant deviations from the model only arise in very extreme cases (i.e. when η is modified by a factor of 100). We thus conclude that the region where ram-pressure is expected to dominate (dashed green area in Fig. 7) will not change significantly if the parameters used to model our cluster or our test galaxy are somewhat different.

Because not all of our galaxies are like the MW, we specifically test the sensitivity of our model (again, for A963_1) with galaxies of different surface density, which depends on R_d , and M_* , as shown by equation 10.

We take average values of R_d in three bins of stellar mass from Fathi et al. (2010, see fig. 15) and compute Π_{gal} in each case. The resulting ram-pressure stripping model (for $\eta = 1$) is shown by the thick solid lines on the bottom panel of Fig. A1. Notice the stellar mass range considered is very large, from $<10^8 M_{\odot}$ to $10^{11} - 10^{12} M_{\odot}$. In this plot, our MW model ($M_* = 4.6 \times 10^{10} M_{\odot}$) would lie somewhere between the blue and red line. We further accounted for the scatter or uncertainty in R_d in each case, by computing the associated uncertainty in each model (1σ , shaded regions). The values used in each model are

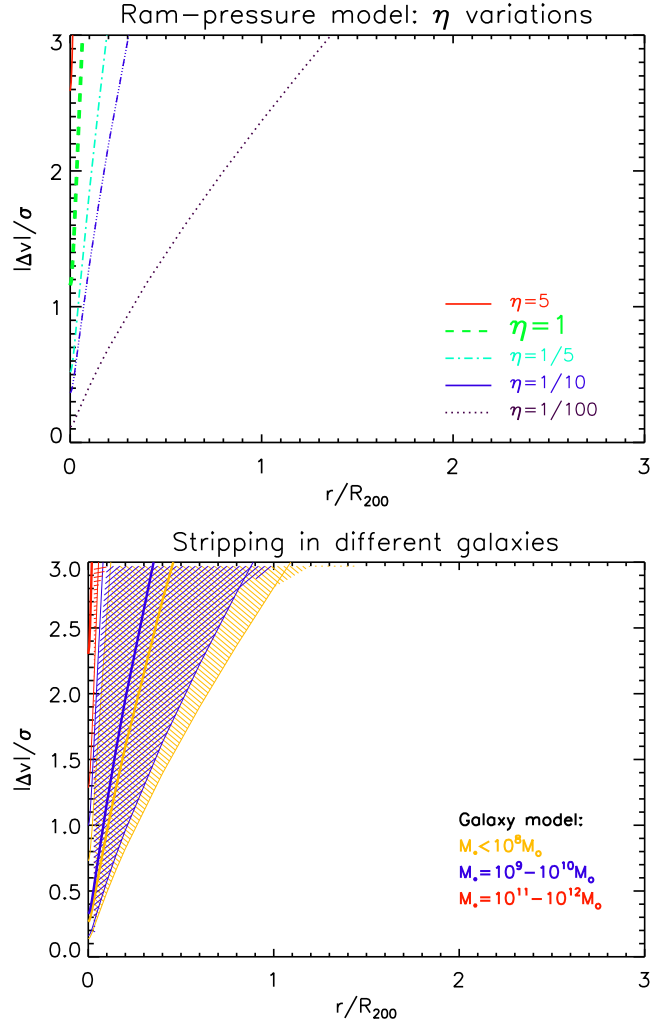


Figure A1. Top: the ram-pressure stripping model for an MW galaxy in A963_1 is shown for different ram-pressure stripping intensities ($\eta = P_{\text{ram}}/\Pi_{\text{gal}}$), as labelled. Bottom: the ram-pressure stripping model for cluster A963_1 (using $\eta = 1$) is tested against galaxies of different stellar mass, as labelled. The thick lines correspond to the model using the average scalelength for that mass range (see the text), and the shaded areas show the uncertainties introduced by the scatter in R_d . In both panels, the axis range mimics that of Fig. 7 (left-hand panel) for easy comparison.

- (i) for galaxies with $M_* < 10^8 M_{\odot}$, the average scalelength is $\langle R_d \rangle = 0.238 \pm 0.094$ kpc (green)
- (ii) for $M_* = 10^9 - 10^{10} M_{\odot}$, $\langle R_d \rangle = 1.52 \pm 0.65$ kpc (blue)
- (iii) for $M_* = 10^{11} - 10^{12} M_{\odot}$, $\langle R_d \rangle = 5.73 \pm 1.94$ kpc (red).

These values were taken directly from the text in Section 4.3 of Fathi et al. (2010). We did not use different mass bins to avoid interpolating from their figure. The plot shows that for galaxies more massive than $10^{10} M_{\odot}$, and R_d values within 1σ of those quoted in Fathi et al. (2010), the stripped region PPS is very similar.

We thus conclude that, there is little variability induced by different cluster models, and that for a mass-limited sample, the method is very robust in predicting the location in PPS where ram-pressure is expected to strip off the gas in galaxies.