

University of Groningen

Auditory mechanics of the frog basilar papilla

Schoffelen, Richard Leonard Maria

IMPORTANT NOTE: You are advised to consult the publisher's version (publisher's PDF) if you wish to cite from it. Please check the document version below.

Document Version

Publisher's PDF, also known as Version of record

Publication date:

2009

[Link to publication in University of Groningen/UMCG research database](#)

Citation for published version (APA):

Schoffelen, R. L. M. (2009). *Auditory mechanics of the frog basilar papilla*. s.n.

Copyright

Other than for strictly personal use, it is not permitted to download or to forward/distribute the text or part of it without the consent of the author(s) and/or copyright holder(s), unless the work is under an open content license (like Creative Commons).

The publication may also be distributed here under the terms of Article 25fa of the Dutch Copyright Act, indicated by the "Taverne" license. More information can be found on the University of Groningen website: <https://www.rug.nl/library/open-access/self-archiving-pure/taverne-amendment>.

Take-down policy

If you believe that this document breaches copyright please contact us providing details, and we will remove access to the work immediately and investigate your claim.

Downloaded from the University of Groningen/UMCG research database (Pure): <http://www.rug.nl/research/portal>. For technical reasons the number of authors shown on this cover page is limited to 10 maximum.

Mechanics of the exceptional anuran ear

R.L.M. Schoffelen
J.M. Segenhout
P. van Dijk

Abstract:

The anuran ear is frequently used for studying fundamental properties of vertebrate auditory systems. This is due to its unique anatomical features, most prominently the lack of a basilar membrane and the presence of two dedicated acoustic end organs, the basilar papilla and the amphibian papilla. Our current anatomical and functional knowledge implies that three distinct regions can be identified within these two organs. The basilar papilla functions as a single auditory filter. The low-frequency portion of the amphibian papilla is an electrically tuned, tonotopically organized auditory end organ. The high-frequency portion of the amphibian papilla is mechanically tuned and tonotopically organized, and it emits spontaneous otoacoustic emissions. This high-frequency portion of the amphibian papilla shows a remarkable, functional resemblance to the mammalian cochlea.

2.1 Introduction

The anatomy and physiology of the amphibian ear show both remarkable resemblances and striking differences when compared to the mammalian auditory system. The differences between the human and the amphibian auditory system are too significant to warrant direct generalizations of results from the animal model to the human situation. However, studying hearing across species helps to understand the relation between the structure and function of the auditory organs (Fay and Popper 1999). Thus, we hope and expect that the knowledge gained about the amphibian auditory system fits into our understanding of auditory systems in general.

Over the course of history a number of diverse amphibian species developed. Currently only three orders remain: anurans, urodeles, and caecilians. Their evolutionary relationship, as well as the evolutionary path of the individual orders, is still under debate. However, they are generally grouped into a single subclass *Lissamphibia* of the class *Amphibia* (Wever 1985).

The ancestral lineage of amphibians separated from the mammalian lineage approximately 350 million years ago, in the paleozoic era. Many of the important developments in the auditory systems emerged after the ancestral paths separated (Manley and Clack 2003). This implies that shared features, like the tympanic middle ear, developed independently in different vertebrate lineages.

The anurans -frogs and toads- form the most diverse order of amphibians. The living species are classified into two suborders, *Archaeobatrachia* and *Neobatrachia* (Wever 1985). Both within and between these suborders there is a large variation in the anatomy and physiology of auditory systems. The most thoroughly studied species belong to family Ranidae, as is reflected in the work referenced in this paper.

The hearing organs of anurans are often falsely assumed to be more primitive than those of mammals, crocodiles, and birds. The relatively simple structure and functioning of the amphibian ear offer an excellent possibility to study hearing mechanisms (e.g. Ronken 1990; Meenderink 2005). On the other hand, the sensitivity of the frog inner ear, which appears to be able to detect (sub)ångström oscillations (Lewis et al. 1985), shows that the frog ear

functions as a sophisticated sensor.

While the ears of most vertebrate species contain one dedicated acoustic end organ, the frog ear has two, the amphibian papilla and the basilar papilla¹. Like in other vertebrates, these organs contain hair cells for the transduction of mechanical waves into electrical (neural) signals. In mammals, birds and lizards, the hair cells are set on a basilar membrane. The frog inner ear lacks such a flexible substrate for its sensory cells. The hair bundles of the frog's auditory organs are covered by a tectorial membrane, as they are in all terrestrial vertebrates except for some lizards species (Manley 2006).

In mammals the mechanical tuning of the basilar membrane is the primary basis for frequency selectivity. In absence of the basilar membrane, the frog's auditory organs must rely solely on the tectorial membrane and the hair cells themselves for frequency selectivity.

Recently, Simmons et al. (2007) and Lewis and Narins (1999) published reviews of the frog's ear anatomy and physiology. In the current paper, we focus on the mechanics of the inner ear, specifically on the mechanics of the tectorial membrane. Only one publication exists on direct mechanical/acoustical measurements of structures in the frog inner ear (Purgue and Narins 2000a). Therefore, many of our inferences will result from indirect manifestations of inner ear mechanics, as observed in anatomical, electro-physiological and otoacoustic-emission studies. Nevertheless, these studies provide a consistent view of the mechanics of the anuran inner ear.

2.2 Anatomy

2.2.1 Middle ear

The ears of most terrestrial vertebrates can be divided into three principal parts: the outer ear, the middle ear and the inner ear. In mammals, the outer ear consists of a pinna and an ear canal, which terminates at the tympanic membrane. In most frog species the outer ear is absent², and the tympanic membrane is found in a bony ring, the *tympanic annulus*, in the side of the skull.

The tympanic membrane defines the distal boundary of the middle-ear cavity. This air-filled cavity is spanned by the ossicular chain, which serves to transfer vibrations of the tympanic membrane to the oval window of the inner ear. In the frog, the ossicular chain consists of two structures, the extra-columella and the columella (Jørgensen and Kannevorf 1998; Mason and Narins 2002a). The cartilaginous extra-columella is loosely connected to the center of the tympanic membrane. Medially, it flexibly connects to the partially ossified columella. The columella widens to form a footplate at its medial end, where it attaches to the oval window of the inner ear. Acoustic stimuli primarily enter the inner ear through the oval window.

The middle-ear's primary function is to compensate for the impedance mismatch between the air and the fluid-filled inner ear. There are two contributions to this compensation (Jaslow et al. 1988; Werner 2003). The first contribution results from the small area of the oval window relative to the area of the tympanic membrane. This causes a concentration of the external force exerted on the tympanic membrane. The second contribution involves a lever action of the columella footplate. The footplate attaches to the otic capsule along its ventral

¹See section 2.2 for an explanation of the anatomical terms used.

²Some species, like *Amolops tormotus* (Feng et al. 2006), have a cavity in front of the tympanic membrane which is considered to be an ear canal and thus an outer ear.

edge. This bond is suggested to be the location of the hinging point of the middle ear lever in the frog (Jørgensen and Kanneworff 1998; Mason and Narins 2002b). The lever action serves as a force amplification mechanism and contributes to the impedance matching between the outside air and the fluids in the inner ear. Both effects result in pressure amplification between the tympanic membrane and the columella footplate, thus overcoming the impedance mismatch between air and the inner-ear fluids.

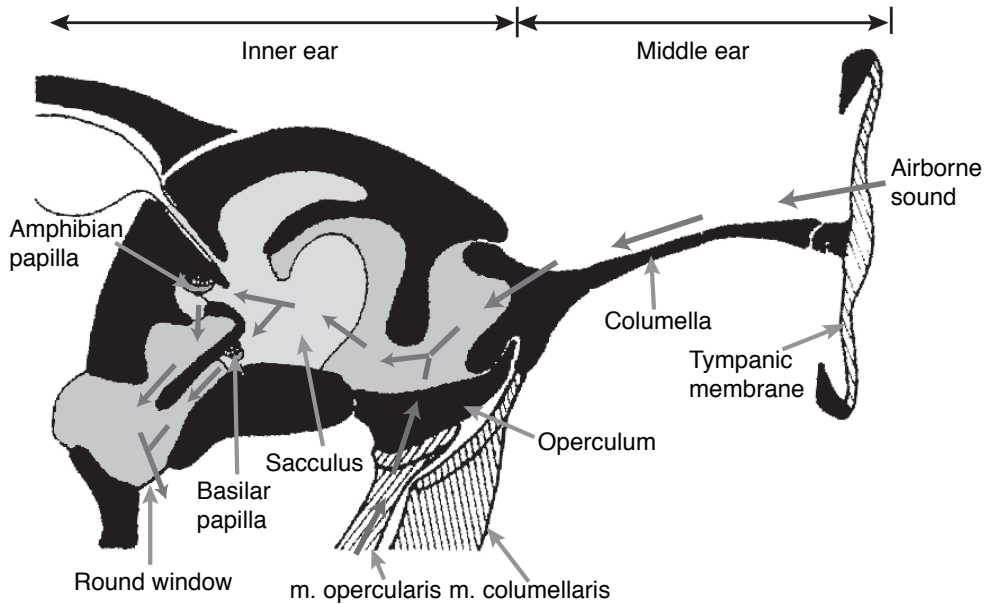


Figure 2.1: Schematic drawing of a transverse section through the frog ear (adapted from Wever 1985). The division into the middle, and inner ear is indicated above the image; a selection of features is indicated in the image. The grey arrows indicate the paths of vibrational energy through the inner ear. Airborne sound enters the inner ear through the columellar path; substrate vibrations putatively through the middle-ear muscles and the operculum. The combined acoustic vibration passes through the fluid-filled inner ear to the round window. The dark grey areas in the inner ear represents the perilymphatic fluid, the light grey area the endolymphatic fluid.

An additional bony disk is flexibly attached to the oval window in amphibians: the operculum. The presence of an operculum in anurans is unique among vertebrates. The operculum's position in the oval window can be modulated through the *m. opercularis*, which also connects it to the shoulder girdle.

The function of the operculum is not entirely clear. Possibly, it serves to transfer substrate vibrations to the inner ear (Lewis and Narins 1999; Mason and Narins 2002b). The putative path for these vibrations includes the front limbs, the shoulder girdle and the *m. opercularis* (Hetherington 1988; Wever 1985).

Alternatively, the operculum-columella system is proposed to protect the inner ear's sensory organs from excessive stimuli. This protection hypothesis takes two different forms. Wever (1985) suggests that the operculum and the columella footplate can be locked together through muscle action. In this manner, the flexibility of the connection to the oval window

decreases and the input impedance increases, which in turn decreases the input-signal amplitude of the pressure wave in the inner ear. It has also been suggested that the action of the m. opercularis could uncouple the operculum and the footplate (Mason and Narins 2002b). This would allow the operculum to move out of phase with the footplate. The out-of-phase motion could absorb part of the inner ear fluid displacement caused by the motion of the footplate. Effectively this creates an energetic by-pass and decreases the amplitude in the inner ear.

A tympanic middle ear as described above is considered to be the typical situation (Jaslow et al. 1988), which can be found in the family of *Ranidae*. However, a wide range of variations in middle ear structures is found across species. In some species a bony disk occupies the tympanic annulus rather than a membrane, e.g. *Xenopus leavis* (Wever 1985), and there are a number of ‘earless’ frogs. The tympanic membrane and the tympanic annulus are absent in these species. A functioning inner ear and a partial middle ear usually exist, although the middle ear cavity may be filled with connective tissue (e.g. *Telmatobius exsul*, Jaslow et al. 1988), or not exist at all (e.g. species in the *Bombina* family, Hetherington and Lindquist 1999; Wever 1985). Remarkably, some of these ‘earless’ frogs have a mating call and exhibit neurophysiological responses (*Bombina bombina*, Walkowiak 1988; *Atelopus*, Lindquist et al. 1998) at typically auditory frequencies, which implies they have another path for the transfer of airborne sound to the inner ear (Jaslow et al. 1988), for example through the lungs (Narins et al. 1988; Lindquist et al. 1998; Hetherington and Lindquist 1999).

2.2.2 Inner ear

The inner ear in the frog has two membranous windows: the oval window and the round window. As mentioned above, acoustic energy primarily enters the inner ear through the oval window. The round window is the main release point of this energy (Purgue and Narins 2000a). A similar lay-out can be found in other terrestrial vertebrates. However, the round window of the frog does not open into the middle ear as it does in mammals. Rather, it can be found in the top of the mouth cavity, under a lining of muscle tissue.

Within the inner ear there are two intertwined membranous compartments: the perilymphatic and the endolymphatic labyrinths (see figure 2.1). The perilymphatic labyrinth connects to both the oval window and the round window. Starting at the oval window and going medially, it passes through a narrow foramen, and widens into the otic cavity, forming the periotic cistern. Continuing medially, it narrows again into the periotic canal. This canal connects the periotic cistern with the perilymphatic space at the round window (Purgue and Narins 2000b).

Between the lateral perilymphatic cistern and the round window, part of the endolymphatic space can be found. The endolymphatic space also includes the semi-circular canals located dorsally from the otic system. It contains the sensory organs of hearing and balance. In the frog inner ear, there are eight sensory epithelia (Lewis and Narins 1999; Lewis et al. 1985), located as follows:

- three cristae in the semi-circular canals, which are sensitive to rotational acceleration of the head,

and one each in:

- the utricle, which detects linear acceleration,
- the lagena, which detects both linear acceleration and non-acoustic vibrations (Caston et al. 1977),

- the sacculus, which is sensitive substrate vibrations up to approximately 100 Hz, and also detects high level low-frequency airborne sound, (Narins 1990; Yu et al. 1991)
- the amphibian papilla, which detects low-frequency acoustic stimuli (Feng et al. 1975), and
- the basilar papilla, which is sensitive to high-frequency airborne stimuli (Feng et al. 1975).

Hair cells are the sensory cells in all of these organs. Like all hair cells, these cells have a stereovillar bundle on their apical surface. Deflection of the bundle as a result of an acoustical vibration or a mechanical acceleration, initiates an ionic transduction current into the cell. This initial current causes a cascade of ionic currents, eventually resulting in the release of neurotransmitter at the basal surface of the cell. The released neurotransmitter triggers neural activity in the nerve-fiber dendrites that innervate the basal portion of the hair cell (Pickles 1988; Yost 2000; Keen and Hudspeth 2006).

As in most vertebrates, a tectorial membrane covers the sensory cells of the auditory end organ. This membrane is a polyelectrolyte gel, which lies on the stereovilli (Freeman et al. 2003). The function of the tectorial membrane is not well understood, and may vary between classes. However, since the stereovilli in most vertebrate ears connect to this membrane, it obviously plays an important role in the conduction of acoustic vibrations to the hair cells³.

2.2.3 Basilar papilla

The basilar papilla is found in a recess that opens into the saccular space at one end, and is limited by a thin contact membrane at the other. The contact membrane separates the endolymphatic fluid in the papillar recess from the perilymphatic fluid at the round window (Lewis and Narins 1999; Wever 1985). The recess perimeter is roughly oval in shape; in the bullfrog, *Rana catesbeiana*, its major axis is approximately 200 μm long, while the minor axis measures approximately 150 μm (Van Bergeijk 1957). In the leopard frog, *Rana pipiens pipiens*, it is of similar size (personal observation, RLMS & JMS, chapter 3).

The oval perimeter of the lumen is formed from limbic tissue; a substance unique to the inner ear, and similar to cartilage (Wever 1985). The sensory epithelium is approximately 100 μm long. It occupies a curved area, which is symmetrical in the major axis of the elliptical lumen. It contains approximately 60 hair cells (measured in *Rana catesbeiana*), from which the stereovilli protrude into the lumen and connect to the tectorial membrane (Frishkopf and Flock 1974). Typically the orientation of the hair cells, as defined by the direction to which the v-shape of the stereovilli bundle points (Lewis et al. 1985), is away from the sacculus in *Ranidae*.

The tectorial membrane spans the lumen of the papillar recess. It occludes about half the lumen, and consequently takes an approximately semi-circular shape when viewed from the saccular side (Frishkopf and Flock 1974; Wever 1985). The membrane has pores at the surface closest to the epithelium, into which the tips of the hair bundles project (Lewis and Narins 1999)⁴.

³In the mammalian ear the inner hair cells, which are the primary sensory cells, do not connect directly to the tectorial membrane. However, their deflection is presumably closely associated with the kinematics of the tectorial membrane (e.g. Nowotny and Gummer 2006)

⁴Some images from the basilar papilla suggest that there are free-standing hair bundles in the anuran's basilar papilla (e.g. Lewis et al. 1985), and chapter 3.

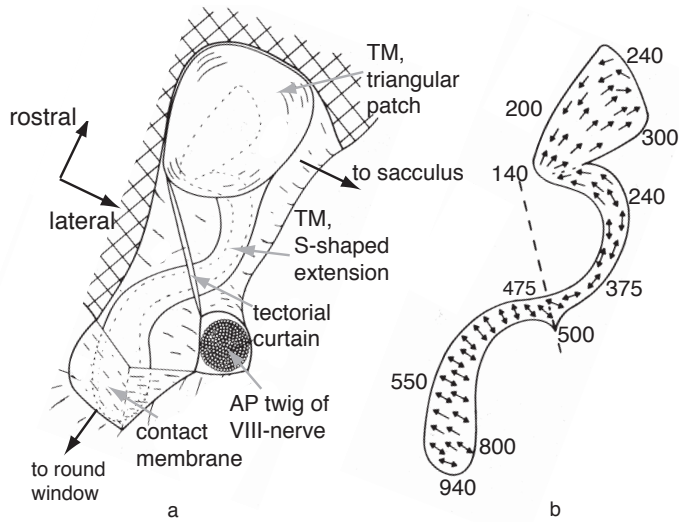


Figure 2.2: Schematic drawing of the amphibian papilla of the bullfrog, *Rana catesbeiana*, (adapted from Lewis et al. 1982, rotated to match orientation of fig. 2.1). *Labels:* TM - tectorial membrane, AP - amphibian papilla. a: General overview of the AP; the dashed outline indicates the location of the sensory epithelium, b: hair cell orientation in the sensory epithelium; dashed line indicates the position of the tectorial curtain. The numbers along the perimeter indicate the characteristic frequency of the auditory nerve fibers connecting to that site (in Hz).

2.2.4 Amphibian papilla

The amphibian papilla can be found in a recess, that extends medially from the saccular space and, in frogs with derived ears, bends caudally to end at a contact membrane. Like the basilar papilla's contact membrane, the membrane separates the endolymphatic fluid in the papilla recess from the perilymphatic fluid at the round window.

The sensory epithelium is set on the dorsal surface of this recess (Lewis and Narins 1999). The epithelium itself has a complex shape; it consists of a triangular patch at the rostral end, and an s-shaped caudal extension towards the contact membrane (see fig. 2.2). The exact shape and length of the caudal extension varies across species, with the most elaborate extensions occurring in species of the family of *Ranidae* (Lewis 1984), while some species lack the s-shaped extension altogether (Lewis 1981).

In the epithelium, the hair cell orientation follows a complicated pattern (see fig. 2.2b). In the rostral patch the cells are orientated towards the sacculus. On the rostral half of the s-shaped extension, they are oriented along the s-shape. However, on the caudal half, the orientation rotates 90° to become perpendicular to the s-shape (Lewis 1981).

An elaborate tectorial membrane is found on the hair bundles. A bulky structure covers the rostral patch, while the membrane gets thinner along the caudal extension (Lewis et al. 1982). A tectorial curtain spans the papilla recess approximately halfway between the sacculus and the contact membrane (Shofner and Feng 1983; Wever 1985). The curtain, also called the sensing membrane (Yano et al. 1990), spans the entire cross section of the lumen. A small slit in the tectorial curtain may function as a shunt for static fluid-pressure differences (Lewis

Figure 2.3: Overview of measurements of the frog inner ear; comparison between *Rana* (left) and *Hyla* (right). The dashed lines indicate the separation between the amphibian papilla and the basilar papilla. a, b: Distributions of characteristic frequencies of auditory nerve fibers in *Rana pipiens pipiens*, and *Hyla cinerea*. c: Example of the response of the contact membrane in *R. catesbeiana*; the black line represents the amphibian papilla, open markers the basilar papilla. d,e: Distributions of spontaneous otoacoustic emissions in ranid species (combined data from *R. pipiens pipiens* and *R. esculenta*), and hylid species (combined data from *H. cinerea*, *H. chrysoscelis*, and *H. versicolor*). f: Example of stimulus frequency otoacoustic emissions in *R. pipiens pipiens* at indicated stimulus levels. g, h: Examples of DP-grams measured in *Rana pipiens pipiens*, and *Hyla cinerea*.

Panels a, b, d, e, g and h are taken from Van Dijk and Meenderink (2006). There, they were reproduced from Ronken (1990), Capranica and Moffat (1983), Van Dijk et al. (1989), Van Dijk et al. (1996), Meenderink and Van Dijk (2004), and Van Dijk and Manley (2001), respectively. Panel c is taken from Purgue and Narins (2000a), and panel f is an adapted presentation of data from Meenderink and Narins (2006) (graph created with data provided by Dr. Meenderink).

et al. 1982).

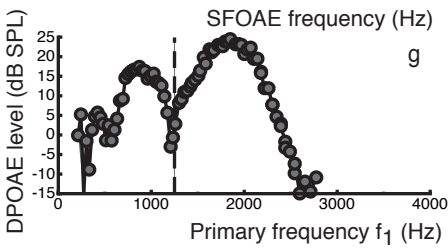
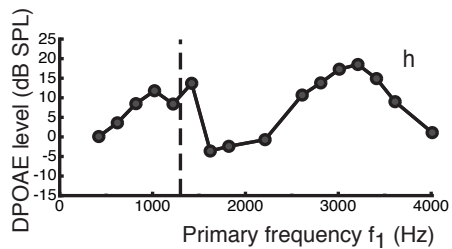
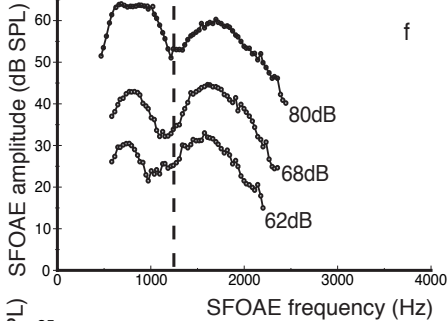
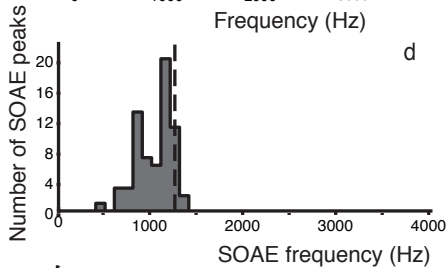
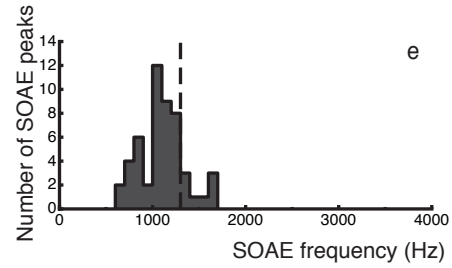
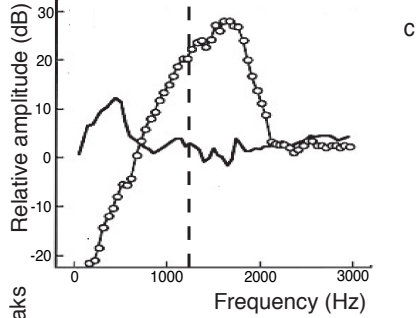
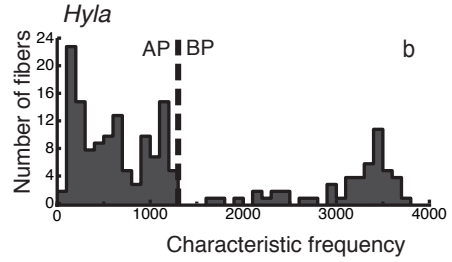
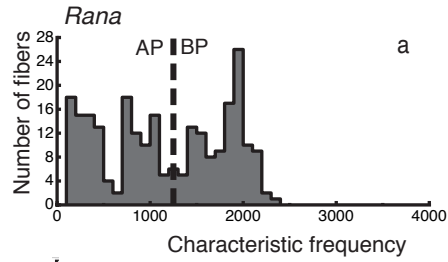
2.3 Response of the auditory end organs

As mentioned in section 2.2.2, the oval window serves as the primary entry point of acoustic energy into the inner ear; the round window presumably serves as the primary release point. After the energy passes through the oval window, it enters the periotic cistern. Between this relatively large perilymphatic space and the round window there are two possible routes: through the endolymphatic space, or through the periotic canal, bypassing the endolymphatic space and the sensory organs altogether (Purgue and Narins 2000a). The bypass presumably serves to protect the sensory organs against low-frequency overstimulation (Purgue and Narins 2000b).

The vibrational energy that ultimately stimulates the auditory end organs predominantly may enter the endolymphatic space through a patch of thin membrane in its cranial wall near the sacculus. This entry-point was identified by Purgue and Narins (2000b) by mechanically probing the perimeter of the endolymphatic space. After entering the endolymphatic space the energy may pass either through the basilar papilla's or the amphibian papilla's lumen to the round window.

Measurements of the motion of the respective contact membranes show that there is a frequency-dependent separation of the vibrational energy between paths through the amphibian and the basilar papilla (Purgue and Narins 2000a; see figure 2.3c). The accompanying dynamic model of the energy flow through the bullfrog's inner ear (Purgue and Narins 2000b) indicates that this separation may occur based on the acoustic impedances of the paths.

The perilymphatic path through the periotic canal may serve as a shunt for acoustical energy to the round window. As its impedance exponentially increases with frequency, low-frequency vibrations will most effectively utilize this path. The endolymphatic path, on the other hand, presumably has a relatively constant impedance throughout the frog's auditory range. The respective lumina of the amphibian and basilar papilla have a frequency-dependent impedance of their own. According to the model mentioned above these impedances are dominated by the characteristics of the contact membranes (Purgue and Narins 2000b). The respective peak displacements of the contact membranes correspond to the detected fre-



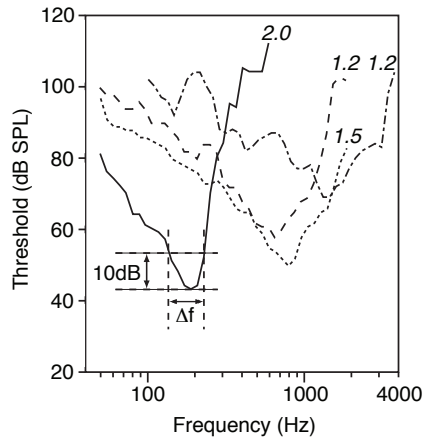


Figure 2.4: Tuning curves measured in the auditory nerve in *R. catesbeiana* (unpublished measurements by JMS & PvD, 1992; various specimens). The numbers in italics indicate Q_{10dB} values ($Q_{10dB} = \frac{CF}{\Delta f}$).

quencies in the associated organs (Purgue and Narins 2000a).

2.3.1 Basilar papilla

The basilar papilla's tectorial membrane is presumably driven by a vibrating pressure gradient between the the sacculus and the basilar papilla's contact membrane. No reports have been published on direct measurements of the mechanical response of the tectorial membrane, or on the basilar papilla's hair-bundle mechanics. However, the hair-cell orientation in the basilar papilla implies that the tectorial membrane's primary mode of motion is to and from the sacculus.

Auditory nerve-fiber recordings from the frog basilar papilla show a frequency-selective response (see figure 2.4 for examples of tuning curves). The range of characteristic frequencies in nerve fibers from the basilar papilla is species dependent. In the leopard frog, they are approximately between 1200 and 2500 Hz (Ronken 1991); in the bullfrog they are slightly lower, between 1000 and 1500 Hz (Shofner and Feng 1981; Ronken 1991). In the *Hyla*-family the characteristic frequencies appear to be significantly higher; in *Hyla cinerea*, the green treefrog, they range from 2.8 to 3.9 kHz (Ehret and Capranica 1980; Capranica and Moffat 1983), and in *Hyla regilla* roughly from 2 to 3 kHz (Stiebler and Narins 1990; Ronken 1991). Where studied in other species, the characteristic frequencies of the basilar papilla's nerve fibers fall roughly within the bounds defined by the bullfrog at the low end and the green treefrog at the high end (*Scaphiopus couchi*: approximately 1-1.5 kHz, Capranica and Moffat 1975, Ronken 1991; *Eleutherodactylus coqui*: approx. 2-4 kHz, Narins and Capranica 1980, Narins and Capranica 1976, Ronken 1991; *Physalaemus pustulosus* group: around 2.2 kHz, Wilczynski et al. 2001).

In each individual frog the tuning curves of the auditory nerve fibers appear to have a

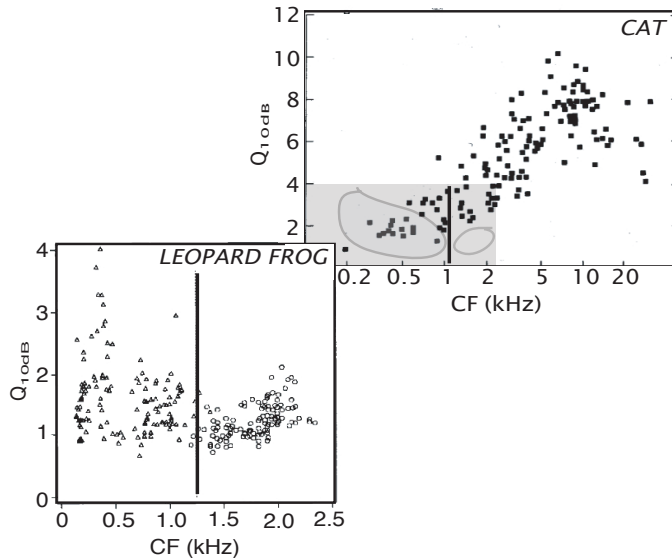


Figure 2.5: Comparison of the filter quality factor Q_{10dB} vs. the characteristic frequency (CF) of nerve fibers from the cat cochlea (adapted from Evans 1975a) and the leopard frog (adapted from Ronken 1991). In the leopard frog graph, the triangular symbols correspond to nerve fibers from the amphibian papilla; the circles to fibers from the basilar papilla. The black line indicates the upper limit of the amphibian papilla's frequency domain. The grey area in the upper (cat) graph corresponds to the area of the lower (frog) graph. The loops indicate the approximate perimeter of the fiber populations in the lower graph for the amphibian papilla and the basilar papilla.

nearly identical shape and characteristic frequency (Ronken 1990; Van Dijk and Meenderink 2006). This suggests that the entire basilar papilla is tuned to the same frequency. Because of this collective tuning, characterized by one characteristic frequency and a single tuning-curve shape, throughout the organ, the basilar papilla may be referred to as a 'single auditory filter'. In comparison, the mammalian cochlea, and the anuran amphibian papilla (see below), consist of a combination of a large number of auditory filters (Pickles 1988).

The quality factor, Q_{10dB} (e.g. Narins and Capranica 1976; Shofner and Feng 1981), is lower than that of other vertebrate hearing organs in the same frequency range, (Evans 1975a, see figure 2.5), and ranges from approximately 1 to 2 in both the leopard frog and the bullfrog (Ronken 1991, see figure 2.5). For other anuran species the ranges are somewhat different, with the lowest minimum values (approximately 0.5) reported for *Hyla regilla*, and the highest maximum values (approximately 2.8) in *Scaphiopus couchi*. Thus, the basilar papilla's frequency selectivity is relatively poor.

As illustrated in figure 2.3, there is no correspondence between the range of characteristic frequencies in the basilar papilla and the range of spontaneous-otoacoustic-emission frequencies (Van Dijk and Manley 2001; Van Dijk and Meenderink 2006; Van Dijk et al. 2003; Meenderink and Van Dijk 2004; Meenderink and Van Dijk 2005; Meenderink and Van Dijk 2006; Meenderink and Narins 2007). Since it is generally assumed that otoacoustic emissions of a particular frequency are generated at the detection site for this frequency, this

suggests that the basilar papilla does not generate spontaneous emissions. However, it does emit distortion-product otoacoustic emissions (Van Dijk and Manley 2001), and stimulus-frequency otoacoustic emissions (Palmer and Wilson 1982; Meenderink and Narins 2006). The peak amplitudes of the distortion-product otoacoustic emissions match the characteristic frequencies of the auditory nerve fibers innervating the basilar papilla (Meenderink et al. 2005b).

The amplitude and phase characteristics of the distortion product otoacoustic emissions can be qualitatively modeled by assuming the basilar papilla to be a single passive non-linear auditory filter (Meenderink et al. 2005b). Thus, nerve-fiber recordings, otoacoustic-emission measurements and a model based on these measurements show that the basilar papilla functions as a single frequency band auditory receptor. This frequency band is relatively broad, and the center frequency may depend on species and individual animals.

The hypothesis that considers the basilar papilla as a single resonator was originally put forward by Van Bergeijk (1957). He investigated the mechanical response of the tectorial membrane in a scale model consisting of a thin rubber tectorium spanning a lumen in a stiff wall. A number of different vibration modes existed in this model. Although Van Bergeijk's model is vastly oversimplified, the basic idea that the mechanical tuning of the tectorial membrane may be the basis of the basilar papilla's frequency selectivity is still viable.

2.3.2 Amphibian papilla

As in the basilar papilla, the tectorial membrane in the amphibian papilla is presumably driven by a vibrating pressure difference between the sacculus and the round window. Due to the more elaborate tectorial membrane and the more complex pattern of hair cell orientations, the motion of the membrane may be expected to be more complex than that of the basilar papilla's tectorial membrane. The tectorial curtain is in the sound path through the papilla, and presumably plays a role in conveying vibrations to the tectorial membrane and the hair bundles.

Electro-physiological recordings from and subsequent dye-filling of single fibers of the auditory nerve show that the amphibian papilla has a tonotopic organization (Lewis et al. 1982). The fibers innervating the triangular patch have low characteristic frequencies, down to approximately 100 Hz. The frequencies increase gradually along the caudal extension. In the bullfrog, the upper frequency is about 1000 Hz; an overview of the tonotopic organization is given in figure 2.2b⁵.

The frequency selectivity of the amphibian papilla's nerve fibers is similar to that of mammalian auditory nerve fibers with the same characteristic frequency. This is in contrast to the significantly poorer frequency selectivity in the basilar papilla's nerve fibers (Ronken 1990; Evans 1975a, see also figure 2.5).

In the low-frequency, rostral part of the papilla, the hair cells are electrically tuned (Pitchford and Ashmore 1987; Smotherman and Narins 1999a). This tuning stems from the electrical properties of the cell membrane's ion channels. The hair-cell tuning characteristics parallel the tonotopy of the single nerve-fiber recordings. Therefore, frequency selectivity in

⁵In some species of the *Hyla*-family the upper frequency in the amphibian papilla is markedly higher than in the bullfrog (Ronken 1991), up to approximately 2.8 kHz in *H. cinerea* (Ehret and Capranica 1980). However, even in these species the vast majority of the recorded fibers from the amphibian papilla have best frequencies below 1250 Hz.

the rostral part of the amphibian papilla appears to be primarily determined by the electrical characteristics of the hair cells.

However, there is a fundamental discrepancy between the tuning characteristics of the hair cells and the auditory nerve fibers. While hair cells exhibit a second-order resonance (Pitchford and Ashmore 1987) auditory neurons display a higher-order filter characteristic (Lewis 1984). Nevertheless, due to the parallels in the tonotopic organization, the assumption that the frequency selectivity is determined by the electrical tuning seems viable for the rostral part of the amphibian papilla. The higher-order responses in the neural signal may result from coupling between hair cells, which may be mechanical, for instance through the tectorial membrane.

Neurons innervating the rostral portion of the amphibian papilla display non-linear two-tone suppression similar to that in other vertebrates (Capranica and Moffat 1980; Benedix et al. 1994). Another manifestation of non-linear behavior can be found in the response to noise: second-order Wiener kernels of low-frequency neurons show off-diagonal components, which are an indication of non-linearity (Van Dijk et al. 1994; Van Dijk et al. 1997a). The spectro-temporal receptive fields constructed from these Wiener kernels exhibit suppressive side bands besides the main characteristic-frequency band of the fiber (Lewis and Van Dijk 2004).

Hair cells caudal to the tectorial curtain do not display electrical resonance (Smotherman and Narins 2000). Therefore, the tuning of this high-frequency, caudal region of the papilla must result from the mechanical properties of the tectorial membrane and the hair cells.

Based on the hair cell orientation, displayed in figure 2.2b, the tectorial membrane motion in the amphibian papilla is expected to be far more complex than in the basilar papilla. Assuming that the hair bundles are orientated in such a way that they are maximally deflected by the connected tectorial membrane, the rostral patch of the membrane should be moving to and from the sacculus, if the appropriate stimuli are presented. The rostral part of the s-shaped extension is moving along its major axis, whereas the extension caudal to the tectorial curtain should be moving in a transverse direction.

The amphibian papilla appears to be the only source of spontaneous otoacoustic emissions in the frog inner ear (Van Dijk et al. 1989; Van Dijk et al. 1996; Long et al. 1996; Van Dijk and Manley 2001; figure 2.3d-e). The frequency distribution of these emissions corresponds to the range of best frequencies of the neurons projecting to the portion of the amphibian papilla caudal to the tectorial curtain. It is generally assumed that an otoacoustic emission of a specific frequency is generated at the location in the inner ear where that frequency is detected. Under this assumption, the presence of spontaneous otoacoustic emissions indicates that the caudal portion of the amphibian papilla exhibits spontaneous activity. Presumably, this activity is related to active amplification of input signals in this area.

The caudal region of the amphibian papilla is also involved in the generation of distortion-product otoacoustic emissions (Van Dijk and Manley 2001; Meenderink and Van Dijk 2004), and stimulus-frequency otoacoustic emissions (Meenderink and Narins 2006). The distortion-product otoacoustic emissions from the amphibian papilla are more vulnerable to metabolic injuries than those from the basilar papilla (Van Dijk et al. 2003). Also, both the spontaneous (Van Dijk et al. 1996) and distortion-product (Meenderink and Van Dijk 2006) otoacoustic emissions display a clear dependence on body temperature. These results combine to indicate that the s-shaped extension of the amphibian papilla caudal to the tectorial curtain functions as an active hearing organ.

2.4 Discussion

Our aim in this review is to outline what is known about the mechanical response properties of the amphibian and basilar papilla. Only one published report exists of the direct mechanical measurements of structures associated with these papillae (Purgue and Narins 2000a). The measurements show that the response of the contact membrane is frequency dependent for each papilla. The movement of the contact membrane may be assumed to reflect the fluid motion within the respective papilla. The contact membrane of the amphibian papilla shows a maximum response when the ear is stimulated with relatively low acoustic frequencies, while the basilar papilla's contact membrane exhibits a maximum response to higher frequencies.

The amphibian and the basilar papilla are the only hearing organs found in terrestrial vertebrates in which the hair cells are not on a flexible basilar membrane. Instead the hair cells are embedded in a relatively stiff cartilaginous support structure. Any frequency-selective response, therefore, most likely originates from the mechanical or electrical properties of the hair cells, or the mechanical properties of the tectorial membrane, or a combination of these factors. Since there are no direct mechanical measurements of either the hair cells in the papillae or the tectorial membranes, we cannot come to any definite conclusions regarding their properties. However, the available morphological and functional data allow for some hypotheses.

The most conspicuous functional characteristic of the amphibian papilla is its tonotopic organization (Lewis et al. 1982). Rostral to the tectorial curtain the hair-cell orientation is essentially parallel to the tonotopic axis. In this low-frequency region of the amphibian papilla the tectorial membrane apparently moves in a rostro-caudal direction. In contrast, the hair-bundle orientation suggests that the tectorial-membrane motion is perpendicular to the tonotopic axis in the high-frequency, caudal region of the papilla. The tectorial membrane's caudal end, therefore, appears to vibrate in a markedly different direction than its rostral end.

In the low-frequency region of the amphibian papilla the hair cells display electrical tuning. The tuning properties of the hair cells parallel the tonotopic organization as measured from the afferent nerve fibers (Pitchford and Ashmore 1987). This strongly suggests that the tuning characteristics of the nerve fibers are primarily determined by the electrical hair-cell resonances. The auditory nerve-fiber recordings reflect the presence of high-order filtering (Lewis 1984), whereas hair cells essentially function as second-order resonances. It is, therefore, likely that coupling between the hair cells shapes the frequency responses in the nerve fibers. Such coupling may be mechanical, e.g. by the tectorial membrane, or electrical, or a combination of mechanical and electrical.

Hair cells in the high-frequency, caudal region do not display any electrical resonance (Smotherman and Narins 1999a). This implies that the frequency selectivity must be based on mechanical tuning, probably by the tectorial membrane. The caudal region of the amphibian papilla shares some notable characteristics with the mammalian cochlea (see also Lewis 1981):

1. the papilla is elongated, and it exhibits a tonotopic gradient along the long axis;
2. the orientation of the hair cells is perpendicular to the tonotopic axis, indicating that the hair cells are stimulated most efficiently by a deflection perpendicular to the tonotopic axis;
3. frequency selectivity –very probably– relies on mechanical tuning;

4. frequency selectivity is similar, with Q_{10dB} -values ranging from 0.8 to 2.2; and
5. both spontaneous and distortion-product otoacoustic emissions are generated. These emissions are physiologically vulnerable.

The presence of spontaneous otoacoustic emissions shows that at least part of the amphibian papilla's caudal extension functions as an active hearing organ. In this respect it is similar to the mammalian cochlea and other vertebrate hearing organs (Lewis and Narins 1999). One active mechanism in the mammalian cochlea is the prestin-mediated active somatic length changes in the outer hair cells (Brownell et al. 1985; Yost 2000; Zheng et al. 2000; Liberman et al. 2002; Dallos 2003). However, this mechanism is probably exclusively present in mammalian outer hair cells. Active hair bundle movements have been reported as an alternative active mechanism in anuran saccular hair cells (Martin and Hudspeth 1999; Martin et al. 2003; Bozovic and Hudspeth 2003); this mechanism may be present in the auditory organs as well. Although the fundamental active mechanism may differ between species, the functional result seems to be very similar across vertebrates: high auditory sensitivity and good frequency selectivity (Manley 2000).

The basilar papilla seems to function in a much simpler manner. Both neural recordings and otoacoustic emission measurements suggest that it functions as a single auditory filter. Since the hair cells in the basilar papilla are unlikely to be electrically tuned, its frequency selectivity most likely results from mechanical tuning, probably via the tectorial membrane.

The basilar papilla is remarkable in that no spontaneous otoacoustic emissions have been recorded in its frequency range. The absence of such emissions can either be caused by the fact that they are not generated within the papilla, or by the fact that the transmission of such emissions to the tympanic membrane is inhibited. However, distortion-product otoacoustic emissions can be recorded in this range (e.g. Van Dijk and Manley 2001). This implies that the outward transmission is not inhibited, and therefore that spontaneous emissions are most likely not generated within the basilar papilla.

Furthermore, the amplitude of the basilar papilla's distortion-product otoacoustic emissions depends less on temperature than that of the amphibian papilla's (Meenderink and Van Dijk 2006). Also, emissions from the basilar papilla are less sensitive to the disruption of oxygen supply (Van Dijk et al. 2003). Apparently, emissions from the basilar papilla are relatively independent of the metabolic rate, and therefore, it has been suggested that the basilar papilla is not an active hearing organ (Vassilakis et al. 2004; Van Dijk and Meenderink 2006).

In conclusion, the frog inner ear takes an exceptional place among the hearing organs of terrestrial vertebrates. It includes two auditory end organs, which both lack the basilar membrane present in every other terrestrial vertebrate species. Instead the hair cells are embedded in a relatively stiff structure. They are stimulated by the motion of the tectorial membrane. Although the basilar and amphibian papilla are similar in this respect, they appear to function by different mechanisms. In fact, even within the amphibian papilla two distinctly different functional regions can be identified. The low-frequency portion, rostral to the tectorial curtain, contains hair cells that exhibit electrical tuning. The hair cells are most sensitive to deflection along the tonotopic axis, thus this is presumably the tectorial membrane's direction of vibration. By contrast, the region caudal to the tectorial curtain shows more similarities to, for example, the mammalian cochlea: the hair cell orientation is perpendicular to the tonotopic axis, and the presence of spontaneous otoacoustic emissions suggests that it functions

as an active hearing organ. Finally, the basilar papilla is yet different: it appears to function as a single passive auditory filter. Thus the frog inner ear includes two auditory end organs with three functional regions.

Acknowledgements

We would like to thank Dr. J.E.C. Wiersinga-Post for her comments on an earlier version of the manuscript.

This study was supported by the Heinsius Houbolt Foundation and the Netherlands Organisation for Scientific Research, and is part of the research program of our department: Communication through Hearing and Speech.

Previously unpublished data described in this paper were obtained in experiments conducted in compliance with the "Principles of animal care", publication No. 86-23, revised 1985 of the National Institute of Health, and with the current legislation, at the time of the experiments, of the country in which they were conducted (The Netherlands).