

University of Groningen

Port-Hamiltonian formulation of nonlinear electrical circuits

Gernandt, H.; Haller, F. E.; Reis, T.; Schaft, A. J. van der

Published in:
Journal of geometry and physics

DOI:
[10.1016/j.geomphys.2020.103959](https://doi.org/10.1016/j.geomphys.2020.103959)

IMPORTANT NOTE: You are advised to consult the publisher's version (publisher's PDF) if you wish to cite from it. Please check the document version below.

Document Version
Publisher's PDF, also known as Version of record

Publication date:
2021

[Link to publication in University of Groningen/UMCG research database](#)

Citation for published version (APA):

Gernandt, H., Haller, F. E., Reis, T., & Schaft, A. J. V. D. (2021). Port-Hamiltonian formulation of nonlinear electrical circuits. *Journal of geometry and physics*, 159, [103959].
<https://doi.org/10.1016/j.geomphys.2020.103959>

Copyright

Other than for strictly personal use, it is not permitted to download or to forward/distribute the text or part of it without the consent of the author(s) and/or copyright holder(s), unless the work is under an open content license (like Creative Commons).

The publication may also be distributed here under the terms of Article 25fa of the Dutch Copyright Act, indicated by the "Taverne" license. More information can be found on the University of Groningen website: <https://www.rug.nl/library/open-access/self-archiving-pure/taverne-amendment>.

Take-down policy

If you believe that this document breaches copyright please contact us providing details, and we will remove access to the work immediately and investigate your claim.

Downloaded from the University of Groningen/UMCG research database (Pure): <http://www.rug.nl/research/portal>. For technical reasons the number of authors shown on this cover page is limited to 10 maximum.



Contents lists available at ScienceDirect

Journal of Geometry and Physics

journal homepage: www.elsevier.com/locate/geomphys

Port-Hamiltonian formulation of nonlinear electrical circuits

H. Gernandt^a, F.E. Haller^b, T. Reis^{b,*}, A.J. van der Schaft^c^a TU Ilmenau, Weimarer Straße 25, 98693 Ilmenau, Germany^b Universität Hamburg, Bundesstraße 55, 20146 Hamburg, Germany^c Bernoulli Institute for Mathematics, CS and AI, University of Groningen, The Netherlands

ARTICLE INFO

Article history:

Received 22 April 2020

Received in revised form 13 August 2020

Accepted 23 September 2020

Available online 2 October 2020

MSC:

34A09

37J39

53D12

93C10

94C15

Keywords:

Port-Hamiltonian system

Electrical circuit

Graph

Dirac structure

Lagrangian submanifold

Resistive relation

ABSTRACT

We consider nonlinear electrical circuits for which we derive a port-Hamiltonian formulation. After recalling a framework for nonlinear port-Hamiltonian systems, we model each circuit component as an individual port-Hamiltonian system. The overall circuit model is then derived by considering a port-Hamiltonian interconnection of the components. We further compare this modeling approach with standard formulations of nonlinear electrical circuits.

© 2020 Elsevier B.V. All rights reserved.

1. Introduction

Port-Hamiltonian system models encompass a very large class of nonlinear physical systems [10,22] and arise from port-based network modeling of complex lumped parameter systems from various physical domains, such as, for instance, mechanical and electrical systems. Modeling by port-Hamiltonian systems has gained a lot of attention, see, for instance, the surveys [10,21]. Tremendous progress has been recently made in port-Hamiltonian modeling of constrained dynamical systems, which leads to differential–algebraic equations [4,12,13,15,21]. This enables to apply the framework to modeling of multibody systems with holonomic and non-holonomic constraints as well as electrical circuits. Examples of the latter class has been considered from a port-Hamiltonian point of view in [10,20,21,25]. However, an approach to electrical circuits has been only made for the case where the circuit contains only capacitances and inductances [6]. The recent progress in port-Hamiltonian differential–algebraic equations however allows to treat a by far wider class of electrical circuits. This is exactly the purpose of this article, where we consider a variety of electrical components, such as resistances, capacitances, inductances, diodes, transformers, transistors, current sources and voltage sources from a port-Hamiltonian perspective. Thereafter, we consider the circuit interconnection structure by utilizing the underlying graph of the given electrical circuit. This gives rise to a port-Hamiltonian model, which only incorporates the Kirchhoff

* Corresponding author.

E-mail addresses: hannes.gernandt@tu-ilmenau.de (H. Gernandt), frederic.haller@uni-hamburg.de (F.E. Haller), timo.reis@uni-hamburg.de (T. Reis), a.j.van.der.schaft@rug.nl (A.J. van der Schaft).

laws. Finally, the port-Hamiltonian model of the electrical circuit is obtained by an interconnection with the individual port-Hamiltonian systems representing the components.

We will compare the resulting dynamical system with well-known formulations of nonlinear electrical circuits like the (charge/flux-oriented) *modified nodal analysis* and the *modified loop analysis*.

2. Port-Hamiltonian systems and their interconnections

2.1. Port-Hamiltonian DAE systems

We review some basics in port-Hamiltonian differential–algebraic equations (DAEs) from [12,13]. An important concept is that of the *Dirac structure*, which describes the power preserving energy-routing of the system. In a very general setting, a Dirac structure on a manifold \mathcal{M} is defined [8, Def. 2.2.1] as a certain subbundle of $\mathcal{D} \subset T\mathcal{M} \oplus T^*\mathcal{M}$ (i.e., the direct sum of the tangent bundle and co-tangent bundle of \mathcal{M}). It turns out that, even for nonlinear circuits, this general definition is not needed, and we may introduce Dirac structures only for the simple case where $\mathcal{M} = \mathbb{R}^n$ (which gives rise to the identification $T^*\mathbb{R}^n \cong T\mathbb{R}^n \cong \mathbb{R}^n \times \mathbb{R}^n$) and $\mathcal{D} \subset \mathbb{R}^n \times \mathbb{R}^n$ is a subspace.

Definition 2.1 (*Dirac Structure*). A subspace $\mathcal{D} \subset \mathbb{R}^n \times \mathbb{R}^n$ is called a *Dirac structure*, if for all $f, e \in \mathbb{R}^n$ holds

$$(f, e) \in \mathcal{D} \iff \forall (\hat{f}, \hat{e}) \in \mathcal{D} : e^\top \hat{f} + \hat{e}^\top f = 0.$$

We will also write $(f, e) \in \mathcal{D} \subset \mathcal{F} \times \mathcal{E}$, where \mathcal{F} denotes the space of *flows* and $\mathcal{E} = \mathbb{R}^n \cong \mathcal{F}^*$ denotes the space of *efforts*. A useful characterization of Dirac structures is the following.

Proposition 2.2 ([8, Prop. 1.1.5]). A subspace $\mathcal{D} \subset \mathbb{R}^n \times \mathbb{R}^n$ is a Dirac structure if, and only if, there exist $K, L \in \mathbb{R}^{n \times n}$ with $KL^\top + LK^\top = 0$ and $\text{rk} \begin{bmatrix} K & L \end{bmatrix} = n$, such that

$$\mathcal{D} = \{(f, e) \in \mathbb{R}^n \times \mathbb{R}^n \mid Kf + Le = 0\}. \tag{1}$$

Now we introduce a relation describing the energy storage of the system and is called *Lagrange submanifold*. Again, the general definition of Lagrange submanifold as found in [11, p. 568] is not needed for nonlinear circuits. It suffices to consider the case of submanifolds of $\mathbb{R}^n \times \mathbb{R}^n$. Typically, the manifolds are assumed to be smooth. This can however be relaxed, and we may consider less-smooth manifolds for our purposes.

Definition 2.3 (*Lagrange Submanifold*). A submanifold $\mathcal{L} \subset \mathbb{R}^n \times \mathbb{R}^n$ is called *Lagrange submanifold* of $\mathbb{R}^n \times \mathbb{R}^n$, if for all $x \in \mathcal{L}$ and $(v_1, v_2) \in \mathbb{R}^n \times \mathbb{R}^n$ holds

$$(v_1, v_2) \in T_x \mathcal{L} \iff \forall (w_1, w_2) \in T_x \mathcal{L} : v_1^\top w_2 - v_2^\top w_1 = 0.$$

Hereby, $T_x \mathcal{L} \subset \mathbb{R}^n \times \mathbb{R}^n$ stands for tangent space of \mathcal{L} at $x \in \mathcal{L}$.

In the following we show that gradient fields induce Lagrange submanifolds.

Proposition 2.4. Let $Q : \mathbb{R}^n \rightarrow \mathbb{R}^n$ be continuously differentiable. Then the submanifold consisting of the graph of Q , i.e.,

$$\mathcal{L}_Q := \{(x, Q(x)) \in \mathbb{R}^n \times \mathbb{R}^n \mid x \in \mathbb{R}^n\}$$

is a Lagrange submanifold if, and only if, Q is a gradient field. In other words, there exists some twice continuously differentiable function $H : \mathbb{R}^n \rightarrow \mathbb{R}$ such that $\nabla H = Q$.

Proof. Using that \mathbb{R}^n is simply connected, the case of smooth Q follows from [11, Prop. 22.12]. The less smooth case follows by a straightforward modification of the proof of [11, Prop. 22.12]. \square

The case where a Lagrangian submanifold is a subspace deserves special attention.

Proposition 2.5 ([12, Prop. 5.2]). A subspace $\mathcal{L} \subset \mathbb{R}^n \times \mathbb{R}^n$ is a Lagrangian submanifold if, and only if,

$$\mathcal{L} = \{(f, e) \in \mathbb{R}^n \times \mathbb{R}^n \mid S^\top f = P^\top e\}$$

for some matrices $S, P \in \mathbb{R}^{n \times n}$ with $S^\top P = P^\top S$ and $\text{rk} \begin{bmatrix} S^\top & P^\top \end{bmatrix} = n$.

Another concept needed for port-Hamiltonian systems is that of the *resistive relation*, which represents the internal energy dissipation of the system. It is defined as a relation on the *space of resistive flows* \mathcal{F}_R and *space of resistive efforts* \mathcal{E}_R [10, Sec. 2.4]. In our setting, both \mathcal{E}_R and \mathcal{F}_R will be again \mathbb{R}^n .

Definition 2.6 (*Resistive Relation*). A relation $\mathcal{R} \subset \mathbb{R}^n \times \mathbb{R}^n$ is called *resistive*, if

$$\forall (f_{\mathcal{R}}, e_{\mathcal{R}}) \in \mathcal{R} : e_{\mathcal{R}}^\top f_{\mathcal{R}} \leq 0.$$

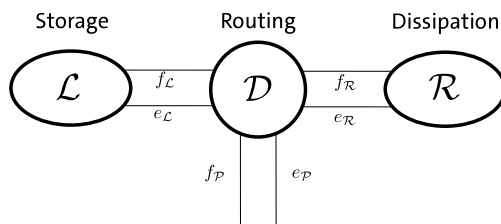


Fig. 1. Visual representation of a pH system.

Having defined Dirac structures, Lagrange submanifolds and resistive relations, we are now ready to introduce port-Hamiltonian systems. Again note this class can be defined in a more general setting by using manifolds [10,13]. We ‘bush this down’ to the setup which is needed for electrical circuits.

Definition 2.7 (Port-Hamiltonian (pH) System). Let $n_L, n_R, n_P \in \mathbb{N}_0$ and denote

$$\mathcal{F}_L = \mathcal{E}_L = \mathbb{R}^{n_L}, \quad \mathcal{F}_R = \mathcal{E}_R = \mathbb{R}^{n_R}, \quad \mathcal{F}_P = \mathcal{E}_P = \mathbb{R}^{n_P}.$$

A port-Hamiltonian (pH) system is a triple $(\mathcal{D}, \mathcal{L}, \mathcal{R})$, where $\mathcal{D} \subset (\mathcal{F}_L \times \mathcal{F}_R \times \mathcal{F}_P) \times (\mathcal{E}_L \times \mathcal{E}_R \times \mathcal{E}_P)$ is a Dirac structure (see Definition 2.1), $\mathcal{L} \subset \mathcal{F}_L \times \mathcal{E}_L$ is a Lagrange submanifold (see Definition 2.3) and $\mathcal{R} \subset \mathcal{F}_R \times \mathcal{E}_R$ a resistive relation (see Definition 2.6).

The elements of $\mathcal{F}_L, \mathcal{E}_L, \mathcal{F}_R, \mathcal{E}_R, \mathcal{F}_P, \mathcal{E}_P$ are, accordingly, called the energy-storing flows/efforts, resistive flows/efforts and external flows/efforts.

The dynamics of the pH system are specified by the differential inclusion

$$\left(-\frac{d}{dt}x(t), f_R(t), f_P(t), e_L(t), e_R(t), e_P(t)\right) \in \mathcal{D}, \quad (x(t), e_L(t)) \in \mathcal{L}, \quad (f_R(t), e_R(t)) \in \mathcal{R}.$$

Note that, in this paper, we do not investigate any solvability theory of the resulting equations (see Fig. 1).

2.2. Interconnection of port-Hamiltonian systems

A key property of pH systems is that this class is closed under power-conserving interconnection. Different methods of how to design such interconnections are for example elucidated in [3,7,10,26]. The interconnection we will be using for the electrical circuits follows the ideas presented in [10]. Interconnection is based on the assumption that each system has two kinds of external flows and efforts, namely specific and to-be-linked ones, where the latter ones are belonging to the same space for each Dirac structure.

Definition 2.8 (Interconnection of pH Systems). For $i = 1, 2$, let $(\mathcal{D}_i, \mathcal{L}_i, \mathcal{R}_i)$ be two pH systems with specific flow and effort spaces,

$$\mathcal{F}_i = \mathcal{F}_{\mathcal{L}_i} \times \mathcal{F}_{\mathcal{R}_i} \times (\mathcal{F}_{\mathcal{P}_{\text{ext}_i}} \times \mathcal{F}_{\mathcal{P}_{\text{link}_i}}), \quad \mathcal{E}_i = \mathcal{F}_{\mathcal{L}_i} \times \mathcal{E}_{\mathcal{R}_i} \times (\mathcal{E}_{\mathcal{P}_{\text{ext}_i}} \times \mathcal{E}_{\mathcal{P}_{\text{link}_i}}),$$

of which the spaces belonging to the external flows and efforts are subdivided into a specific external part, and a to-be-linked part. We define the interconnection of $(\mathcal{D}_1, \mathcal{L}_1, \mathcal{R}_1)$ and $(\mathcal{D}_2, \mathcal{L}_2, \mathcal{R}_2)$,

$$(\mathcal{D}_1, \mathcal{L}_1, \mathcal{R}_1) \circ (\mathcal{D}_2, \mathcal{L}_2, \mathcal{R}_2) := (\mathcal{D}, \mathcal{L}, \mathcal{R}),$$

with respect to $(\mathcal{F}_{\mathcal{P}_{\text{link}}}, \mathcal{E}_{\mathcal{P}_{\text{link}}})$ as the pH system given by

$$\begin{aligned} \mathcal{D} := & \left\{ ((f_{\mathcal{L}_1}, f_{\mathcal{L}_2}), (f_{\mathcal{R}_1}, f_{\mathcal{R}_2}), (f_{\mathcal{P}_1}, f_{\mathcal{P}_2}), (e_{\mathcal{L}_1}, e_{\mathcal{L}_2}), (e_{\mathcal{R}_1}, e_{\mathcal{R}_2}), (e_{\mathcal{P}_1}, e_{\mathcal{P}_2})) \right. \\ & \left. \mid \exists (f_{\text{link}}, e_{\text{link}}) \in \mathcal{F}_{\mathcal{P}_{\text{link}}} \times \mathcal{E}_{\mathcal{P}_{\text{link}}} : (f_{\mathcal{L}_1}, f_{\mathcal{R}_1}, f_{\mathcal{P}_1}, f_{\text{link}}, e_{\mathcal{L}_1}, e_{\mathcal{R}_1}, e_{\mathcal{P}_1}, e_{\text{link}}) \in \mathcal{D}_1 \right. \\ & \left. \wedge (f_{\mathcal{L}_2}, f_{\mathcal{R}_2}, f_{\mathcal{P}_2}, -f_{\text{link}}, e_{\mathcal{L}_2}, e_{\mathcal{R}_2}, e_{\mathcal{P}_2}, e_{\text{link}}) \in \mathcal{D}_2 \right\}, \end{aligned}$$

and

$$\begin{aligned} \mathcal{L} = & \{ ((f_{\mathcal{L}_1}, f_{\mathcal{L}_2}), (e_{\mathcal{L}_1}, e_{\mathcal{L}_2})) \in (\mathcal{F}_{\mathcal{L}_1} \times \mathcal{F}_{\mathcal{L}_2}) \times (\mathcal{E}_{\mathcal{L}_1} \times \mathcal{E}_{\mathcal{L}_2}) \mid (f_{\mathcal{L}_1}, e_{\mathcal{L}_1}) \in \mathcal{L}_1 \wedge (f_{\mathcal{L}_2}, e_{\mathcal{L}_2}) \in \mathcal{L}_2 \}, \\ \mathcal{R} = & \{ ((f_{\mathcal{R}_1}, f_{\mathcal{R}_2}), (e_{\mathcal{R}_1}, e_{\mathcal{R}_2})) \in (\mathcal{F}_{\mathcal{R}_1} \times \mathcal{F}_{\mathcal{R}_2}) \times (\mathcal{E}_{\mathcal{R}_1} \times \mathcal{E}_{\mathcal{R}_2}) \mid (f_{\mathcal{R}_1}, e_{\mathcal{R}_1}) \in \mathcal{R}_1 \wedge (f_{\mathcal{R}_2}, e_{\mathcal{R}_2}) \in \mathcal{R}_2 \}. \end{aligned}$$

The above constructed set \mathcal{D} is indeed a Dirac structure [10, Chap. 6]. It is obvious that \mathcal{L} is a Lagrange submanifold and \mathcal{R} is a resistive relation. Hence, the interconnection of pH systems results in a pH system (see Figs. 2 and 3).

Next we introduce the Cartesian product of pH systems, which simply means that several coexisting pH systems are united to one pH system. In terms of Definition 2.8, it means that several pH systems are interconnected with trivial linking ports. That is, for pH systems $(\mathcal{D}_1, \mathcal{L}_1, \mathcal{R}_1)$ and $(\mathcal{D}_2, \mathcal{L}_2, \mathcal{R}_2)$ we add artificial and trivial linking ports $\mathcal{F}_{\text{link}} = \mathcal{E}_{\text{link}} = \{0\}$

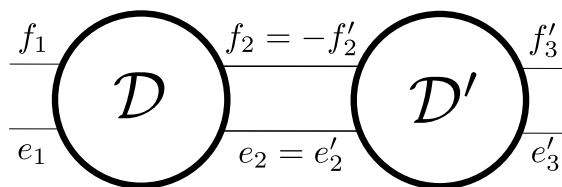


Fig. 2. Composition of two Dirac structures.

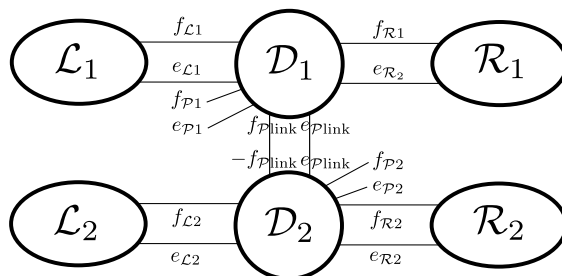


Fig. 3. Interconnection of two pH systems.

(which do not affect the dynamic behavior) and interconnect these systems with respect to this trivial port $(\mathcal{F}_{\mathcal{P}link}, \mathcal{E}_{\mathcal{P}link})$. A coupling of this kind will be denoted by $(\mathcal{D}_1, \mathcal{L}_1, \mathcal{R}_1) \times (\mathcal{D}_2, \mathcal{L}_2, \mathcal{R}_2)$. We further inductively define

$$\bigtimes_{i=1}^n (\mathcal{D}_i, \mathcal{L}_i, \mathcal{R}_i) := \left(\bigtimes_{i=1}^{n-1} (\mathcal{D}_i, \mathcal{L}_i, \mathcal{R}_i) \right) \times (\mathcal{D}_n, \mathcal{L}_n, \mathcal{R}_n).$$

2.3. Port-Hamiltonian systems on graphs

Now we consider interconnections of pH systems, which are defined via graphs [23]. This will lead us to the notions of Kirchhoff-Dirac structure and Kirchhoff-Lagrange manifold. Later we will show that such interconnections correspond to the Kirchhoff laws in electrical circuits. To this end, we introduce some basic graph theoretical notions from [9].

Definition 2.9 (Graphs and Subgraphs). A directed graph is a quadruple $\mathcal{G} = (V, E, \text{init}, \text{ter})$ consisting of a vertex set V , a edge set E and two maps $\text{init}, \text{ter} : E \rightarrow V$ assigning to each edge e an initial vertex $\text{init}(e)$ and a terminal vertex $\text{ter}(e)$. The edge e is said to be directed from $\text{init}(e)$ to $\text{ter}(e)$. \mathcal{G} is said to be loop-free, if $\text{init}(e) \neq \text{ter}(e)$ for all $e \in E$. Let $V' \subset V$ and $E' \subset E$ with

$$E' \subset E|_{V'} := \{e \in E : \text{init}(e) \in V' \wedge \text{ter}(e) \in V'\}.$$

Then the triple $(V', E', \text{init}|_{E'}, \text{ter}|_{E'})$ is called a subgraph of \mathcal{G} . If $E' = E|_{V'}$, then the subgraph is called the induced subgraph on V' . If $V' = V$, then the subgraph is called spanning. Additionally a proper subgraph is one where $E' \neq E$. \mathcal{G} is called finite, if V and E are finite.

The notion of a path in a directed graph $\mathcal{G} = (V, E, \text{init}, \text{ter})$ is quite descriptive. However, since a path may also go through an edge in reverse direction, we define for each $e \in E$ an additional edge $-e \notin E$ with $\text{init}(-e) = \text{ter}(e)$ and $\text{ter}(-e) = \text{init}(e)$.

Definition 2.10 (Paths, Connectivity, Cycles, Forests and Trees). Let $\mathcal{G} = (V, E, \text{init}, \text{ter})$ be a directed finite graph. An r -tuple $e = (e_1, \dots, e_r) \in (E \cup -E)^r$ is called a path from v to w , if

- init(e_1), ..., init(e_r) are distinct,
- ter(e_i) = init(e_{i+1}) $\forall i \in \{1, \dots, r - 1\}$,
- init(e_1) = $v \wedge$ ter(e_r) = w .

A cycle is a path from v to v . Two vertices v, w are connected, if there is a path from v to w . This gives an equivalence relation on the vertex set. The induced subgraph on an equivalence class of connected vertices gives a component of the graph. A graph is called connected, if there is only one component.

A subgraph $\mathcal{K} = (V, E', \text{init}|_{E'}, \text{ter}|_{E'})$ of a directed graph $\mathcal{G} = (V, E, \text{init}, \text{ter})$ is called a spanning forest in \mathcal{G} , if \mathcal{K} does not contain any cycles and is maximal with this property, that is, \mathcal{K} is not a proper subgraph of a subgraph of \mathcal{G} which does not contain any cycles. A subgraph \mathcal{K} is called tree, if it is a forest and connected.

In the context of electrical circuits, finite and loop-free directed graphs are of major importance. These allow to associate a special matrix [1, Sec. 3.2].

Definition 2.11 (*Incidence Matrix*). Let $\mathcal{G} = (V, E, \text{init}, \text{ter})$ be a finite and loop-free directed graph. Let $E = \{e_1, \dots, e_m\}$ and $V = \{v_1, \dots, v_n\}$. Then the *incidence matrix* of \mathcal{G} is $A_0 \in \mathbb{R}^{n \times m}$ with

$$a_{jk} = \begin{cases} 1 & \text{init}(e_k) = v_j, \\ -1 & \text{ter}(e_k) = v_j, \\ 0 & \text{otherwise.} \end{cases}$$

\mathcal{G} has $k \in \mathbb{N}$ components if, and only if, $\text{rk} A_0 = n - k$ [1, p. 140]. This allows to remove up to k rows from A_0 such that a matrix with same rank is obtained. The choice of these to-be-deleted rows has to be done in a special way: One has to choose a row set, which corresponds to a vertex set S that contains at most one vertex per component to \mathcal{G} . This deletion plays a crucial role in the following definition of a special Dirac structure and Lagrange submanifold.

Definition 2.12 (*Kirchhoff-Dirac Structure, Kirchhoff-Lagrange Submanifold*). Assume that $\mathcal{G} = (V, E, \text{init}, \text{ter})$ is a finite and loop-free directed graph with incidence matrix $A_0 \in \mathbb{R}^{n \times m}$. Let $\mathcal{G}_1, \dots, \mathcal{G}_k$ be the components of \mathcal{G} and let $V_1, \dots, V_k \subset V$ be the corresponding vertex sets. Let $S \subset V$ such that S contains at most one vertex from each component, that is

$$\forall s, s' \in S, i \leq k : v, v' \in V_i \Rightarrow v = v'. \tag{2}$$

Let $A \in \mathbb{R}^{(n-k) \times m}$ be constructed from $A_0 \in \mathbb{R}^{n \times m}$ by deleting the rows corresponding to the vertices from S . The *Kirchhoff-Dirac structure* of \mathcal{G} is

$$\mathcal{D}_k^S(\mathcal{G}) := \left\{ (j, i, \phi, u) \in \mathbb{R}^{n-|S|} \times \mathbb{R}^m \times \mathbb{R}^{n-|S|} \times \mathbb{R}^m \mid \begin{bmatrix} I & A \\ 0 & 0 \end{bmatrix} \begin{pmatrix} j \\ i \end{pmatrix} + \begin{bmatrix} 0 & 0 \\ A^\top & -I \end{bmatrix} \begin{pmatrix} \phi \\ u \end{pmatrix} = 0 \right\}. \tag{3}$$

Assume that $S = \{v_1, \dots, v_{|S|}\}$ (which is – by a reordering of the vertices – no loss of generality). Then the *Kirchhoff-Lagrange submanifold* of \mathcal{G} with respect to S is

$$\mathcal{L}_k^S(\mathcal{G}) := \{0\} \times \mathbb{R}^{n-|S|} \subset \mathbb{R}^{n-|S|} \times \mathbb{R}^{n-|S|}. \tag{4}$$

Remark 2.13. By Proposition 2.2, $\mathcal{D}_k^S(\mathcal{G})$ in (3) is a Dirac structure, whereas Proposition 2.5 implies that $\mathcal{L}_k^S(\mathcal{G})$ in (4) is a Lagrange submanifold of $\mathbb{R}^{n-|S|} \times \mathbb{R}^{n-|S|}$.

The concepts of Definition 2.12 allow to introduce the pH system $(\mathcal{D}_k^S(\mathcal{G}), \mathcal{L}_k^S(\mathcal{G}), \{0\})$ with dynamics

$$\left(-\frac{d}{dt}q(t), i(t), \phi(t), u(t)\right) \in \mathcal{D}_k^S(\mathcal{G}), \quad (q(t), \phi(t)) \in \mathcal{L}_k^S(\mathcal{G}). \tag{5}$$

Then, by the equivalence of $(q(t), \phi(t)) \in \mathcal{L}_k^S(\mathcal{G})$ to $q(t) = 0$ and $\phi(t) \in \mathbb{R}^{n-|S|}$, we see that (5) holds, if, and only if,

$$q(t) = 0 \wedge Ai(t) = 0 \wedge A^\top \phi_2(t) = -u(t).$$

In particular, $i(t) \in \ker A$ and $u(t) \in \text{im} A^\top$. In the context of electrical circuits, this will indeed represent Kirchhoff's current and voltage law [18, Thm. 4.5 & Thm. 4.6]. The choice of S can be interpreted as the set of *grounded vertices*. The quantities q, i, ϕ and u can respectively be thought as the vertex charges, the edge currents, the vertex potentials, and the edge voltages.

Note that (5) is indeed a pH system. However, this system is of rather pathological nature, since it does not contain any 'true dynamics', as the differential variable q is nulled by the Lagrange submanifold. Note that these 'true dynamics' come into play later on, when we interconnect with dynamic circuit elements like capacitances and inductances.

In the terminology of [23], $\mathcal{D}_k^S(\mathcal{G})$ corresponds to the Kirchhoff-Dirac structure of a graph with $|S| = \emptyset$. Moreover, a Dirac structure similar to (3) has been used in [20], with the main difference that in our present case all nodes are considered to be 'boundary nodes' in the nomenclature of [20].

We briefly present an alternative (slightly less straight-forward) construction of pH systems on graphs, namely by means of cycles instead to vertices. For a given spanning forest \mathcal{T} of a loop-free directed graph \mathcal{G} with n edges, m vertices and k connected components, the minimality property yields that the incorporation of any edge of \mathcal{G} not belonging to \mathcal{T} (called *chord*) results in a subgraph with exactly one cycle. Consequently, the set of edges in the complement of \mathcal{T} in \mathcal{G} leads to a set $\mathcal{C} = \{c_1, \dots, c_{m-n+k}\}$ of cycles, the so-called *fundamental cycles* (see [1, p. 148] & [9, p. 26]). We equip each fundamental cycle with the orientation of its corresponding chord [1, p. 148] and consider the associated *fundamental cycle matrix* $B \in \mathbb{R}^{(m-n+k) \times m}$ which is defined entrywise by (cf. [1, Sec. 3.3])

$$b_{jl} = \begin{cases} 1 & e_l \in C_j \text{ and the orientations agree,} \\ -1 & e_l \in C_j \text{ and the orientations do not agree,} \\ 0 & \text{otherwise.} \end{cases}$$

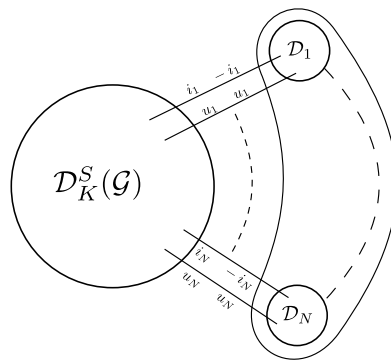


Fig. 4. Visual representation of the Dirac structure \mathcal{D} resulting from the interconnection (8).

This enables us to introduce the following Dirac structure and Lagrange submanifold

$$\begin{aligned} \mathcal{D}'_K(\mathcal{G}) &:= \left\{ (\varphi, u, \iota, i) \in \mathbb{R}^{m-n+k} \times \mathbb{R}^m \times \mathbb{R}^{m-n+k} \times \mathbb{R}^m \mid \begin{bmatrix} I & B \\ 0 & 0 \end{bmatrix} \begin{pmatrix} \varphi \\ u \end{pmatrix} + \begin{bmatrix} 0 & 0 \\ B^\top & -I \end{bmatrix} \begin{pmatrix} \iota \\ i \end{pmatrix} = 0 \right\}, \\ \mathcal{L}'_K(\mathcal{G}) &:= \{0\} \times \mathbb{R}^{n-m+k}, \end{aligned} \tag{6}$$

which form the pH system $(\mathcal{D}'_K(\mathcal{G}), \mathcal{L}'_K(\mathcal{G}), \{0\})$ with dynamics

$$\left(-\frac{d}{dt} \psi(t), i(t), \iota(t), u(t)\right) \in \mathcal{D}'_K(\mathcal{G}), \quad (\psi(t), \iota(t)) \in \mathcal{L}'_K(\mathcal{G}), \tag{7}$$

from which, analogous to Remark 2.13, one can derive that (7) is equivalent to $\psi(t) = 0$, $Bu(t) = 0$ and $i(t) = B^\top \iota$. Since $\text{im } B = \ker A^\top$ [18, Thm. 4.4], the relations $u(t) \in \ker B = 0$ and $i(t) \in \text{im } B^\top$ respectively represent Kirchhoff's voltage and current law. The quantities ψ, u, ι and i can respectively be thought as the cycle fluxes, the edge voltages, the cycle currents and the edge currents.

3. Electrical circuits as port-Hamiltonian systems

Our essential idea to port-Hamiltonian modeling of electrical circuits is to extend the tuple of voltages across and currents through the edges – in the case where we consider a vertex-based formulation of the Kirchhoff laws – by vertex charges and potentials, and – in the case where we consider a loop-based formulation of the Kirchhoff laws – by cycle fluxes and cycle currents, along with an accordant modeling of the graph interconnection structure by means of the approach in the preceding section. The electrical components are modeled by separate pH systems, and thereafter coupled with the one representing the interconnection structure (see Fig. 4).

The circuits may be composed of *two-terminal* and *multi-terminal* components. We will speak of ℓ_t -terminal components, with $\ell_t \in \mathbb{N}$ denoting the number of terminals [27]. Each ℓ_t -terminal component connects ℓ_t vertices of the electrical circuit through its terminals. For instance, a resistance has two terminals, whereas a transistor has three terminals, and a transformer has four terminals. To regard an electrical circuit as a graph (see Fig. 5), we need to replace the ℓ_t -terminal components by ℓ_p edges between the vertices they connect, for some $\ell_p \in \mathbb{N}$, which we call the number of ports. Such a device is also called a ℓ_p -port component. This replacement is displayed in Fig. 5. The direction assigned to each edge is not a physical restriction but rather a definition of the *positive direction* of the corresponding voltage and current [18]. The physical properties of the electrical components will be reflected by port-Hamiltonian dynamics on these edges. The replacement of an ℓ_t -terminal component by ℓ_p edges between vertices, i.e., by a graph, is subject to physical modeling. For further details on terminals, ports and their relation, we refer to [27].

To be more precise, for $\ell_p, \ell_t \in \mathbb{N}$, an ℓ_t -terminal component on ℓ_p edges will be regarded as a pH system $(\mathcal{D}, \mathcal{L}, \mathcal{R})$, where $\mathcal{D} \subset \mathbb{R}^{n_S+n_R+\ell_p} \times \mathbb{R}^{n_S+n_R+\ell_p}$, with $\ell_p = n_S + n_R$ for some $n_S, n_R \in \mathbb{N}_0$. We associate to \mathcal{D} a graph $\mathcal{G} = (V, E, \text{init}, \text{ter})$ with $|V| = \ell_t$ and $|E| = \ell_p$ (cf. Fig. 6). The external flow and effort variables will always represent the current through [18, Def. 3.2] and the voltage along [18, Def. 3.6] the corresponding edges, respectively.

3.1. Electrical circuits as interconnections of port-Hamiltonian systems

Let an electrical circuit consisting of N electrical components $(\mathcal{D}_i, \mathcal{L}_i, \mathcal{R}_i)_{i \in \{1, \dots, N\}}$, each with $\ell_{p,i}$ ports, be given, with $N \in \mathbb{N}$ and let $(\mathcal{G}_i)_{i \in \{1, \dots, N\}} = (V_i, E_i, \text{init}_i, \text{ter}_i)_{i \in \{1, \dots, N\}}$ be the respective graphs resulting from the physical modeling of the $\ell_{p,i}$ -port components (see Fig. 6), where we assume that the edge sets E_1, \dots, E_N are disjoint. We define the *underlying graph of the circuit* \mathcal{G} (see Fig. 5) as

$$\mathcal{G} = (V, E, \text{init}, \text{ter}) := \left(\bigcup_{i=1}^N V_i, \bigcup_{i=1}^N E_i, \text{init}, \text{ter} \right),$$

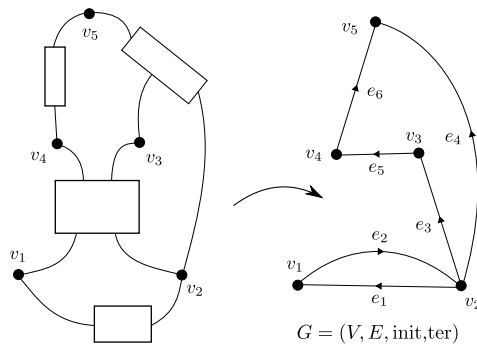


Fig. 5. Obtaining the underlying graph of the electrical circuit.

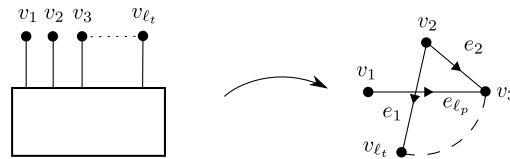


Fig. 6. Replacing an ℓ_t -terminal component by a graph with ℓ_p edges.

with $\text{init}(e) = \text{init}_i(e)$ and $\text{ter}(e) = \text{ter}_i(e)$ if $e \in E_i$ for some $i \in \{1, \dots, N\}$ and let $V = \{v_1, \dots, v_n\}$, $E = \{e_1, \dots, e_m\}$ for some $n, m \in \mathbb{N}$. Further, let $A_0 \in \mathbb{R}^{n \times m}$ be the incidence matrix associated to \mathcal{G} and let $S \subset V$ with property (2) represent the vertices grounded in the circuit. We model the dynamics of the electrical circuits as the dynamics of the pH system

$$(\mathcal{D}, \mathcal{L}, \mathcal{R}) := (\mathcal{D}_K^S(\mathcal{G}), \mathcal{L}_K^S(\mathcal{G}), \{0\}) \circ \left(\bigtimes_{i=1}^N (\mathcal{D}_i, \mathcal{L}_i, \mathcal{R}_i) \right) \tag{8}$$

(see Fig. 4) where the interconnection is performed with respect to the flow and effort spaces

$$(\mathcal{F}_{\text{link}}, \mathcal{E}_{\text{link}}) = \left(\bigtimes_{i=1}^N \mathbb{R}^{m_{p_i}}, \bigtimes_{i=1}^N \mathbb{R}^{m_{p_i}} \right) = (\mathbb{R}^m, \mathbb{R}^m)$$

corresponding to the port variables associated to the currents and voltages of the ℓ_p -port components.

3.2. Physical modeling of circuit components as port-Hamiltonian systems

We present a couple of ‘prominent’ electrical components from a port-Hamiltonian viewpoint; among them are capacitances, inductances, resistances, diodes, transformers, transistors and sources. Note that this list is by no means complete. In principle, our approach also allows to incorporate components which are modeled by partial differential equations, such as transmission lines and refined models of semiconductor devices. This involves a further generalization of pH systems on infinite-dimensional spaces and particularly leads to the notion of *Stokes-Dirac structure*, see [5,16,17].

Throughout this section, i will denote currents and u will denote voltages. An oftentimes used Dirac structure will be, for $\ell_p \in \mathbb{N}$,

$$\mathcal{D}_{\ell_p} = \left\{ \begin{pmatrix} -i \\ u \\ u \end{pmatrix} \in \mathbb{R}^{4\ell_p} \mid i, u \in \mathbb{R}^{\ell_p} \right\}. \tag{9}$$

It can easily be verified that this is indeed a Dirac structure. The variable i stands for the vector of currents, whereas u is the vector of voltages in the component. Note that a copy of the voltage and negative of the current vector is required, since it is later on eliminated by the interconnection according to Definition 2.8.

3.2.1. Capacitances

Let $H_C \in C^1(\mathbb{R}^{\ell_p}, \mathbb{R})$. A capacitance with ℓ_p ports is modeled as a pH system $(\mathcal{D}_C, \mathcal{L}_C, \mathcal{R}_C)$, where $\mathcal{D}_C = \mathcal{D}_{\ell_p}$ with \mathcal{D}_{ℓ_p} as in (9), $\mathcal{R}_C = \{0\}$, and

$$\mathcal{L}_C = \{ (u_C, q_C) \in \mathbb{R}^{2\ell_p} \mid q_C = \nabla H_C(u_C) \}.$$



Fig. 7. Deriving the underlying graph of a capacitance, conductance, ideal diode, PN-junction diode, inductance, resistance, or sources.

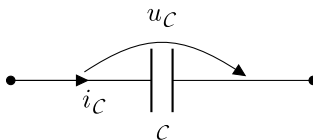


Fig. 8. Capacitance: circuit symbol.

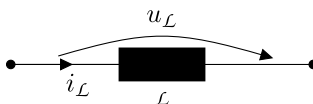


Fig. 9. Inductance: circuit symbol.

The dynamics consequently read

$$\left(-\frac{d}{dt}q_C(t), i_C(t), u_C(t), u_C(t)\right) \in \mathcal{D}_C, \quad (q_C(t), u_C(t)) \in \mathcal{L}_C.$$

Here, q_C represents the *charge* of the capacitance and the *Hamiltonian* H_C represents the *energy storage function* of the system. From this pH system, one can derive

$$i_C(t) = \frac{d}{dt}q_C(t), \quad u_C(t) = \nabla H_C(q_C(t)).$$

If the capacitance has two terminals, then we obtain a conventional capacitance with one port as in Fig. 7 (see Figs. 8 and 9).

3.2.2. Inductances

Let $H_L \in C^1(\mathbb{R}^{\ell_p}, \mathbb{R})$. An inductance with ℓ_p ports is modeled as a pH system $(\mathcal{D}_L, \mathcal{L}_L, \mathcal{R}_L)$ with

$$\mathcal{D}_L = \left\{ \begin{pmatrix} -u_L \\ i_L \\ i_L \\ u_L \end{pmatrix} \in \mathbb{R}^{4\ell_p} \mid u_L, i_L \in \mathbb{R}^{\ell_p} \right\}$$

and

$$\mathcal{L}_L = \{(\psi_L, i_L) \in \mathbb{R}^{2\ell_p} \mid i_L = \nabla H_L(\psi_L)\}, \quad \mathcal{R}_L = \{0\}.$$

The dynamics are now given by

$$\left(-\frac{d}{dt}\psi_L(t), i_L(t), i_L(t), u_L(t)\right) \in \mathcal{D}_L, \quad (\psi_L(t), i_L(t)) \in \mathcal{L}_L,$$

Here, ψ_L represents the *magnetic flux* of the inductance and the *Hamiltonian* $H_L \in C^1(\mathbb{R}^{\ell_p}, \mathbb{R})$ represents the *energy storage function* of the system. From this pH system, one can derive

$$u_L(t) = \frac{d}{dt}\psi_L(t), \quad i_L(t) = \nabla H_L(\psi_L(t)).$$

If the inductance has two terminals, then we obtain a conventional inductance with one port as in Fig. 7.

3.2.3. Conductances and resistances

Let $\mathcal{R}_{\mathcal{R}} \subset \mathbb{R}^{\ell_p} \times \mathbb{R}^{\ell_p}$ be a resistive relation. Consider the pH system $(\mathcal{D}_{\mathcal{R}}, \mathcal{L}_{\mathcal{R}}, \mathcal{R}_{\mathcal{R}})$, where $\mathcal{D}_{\mathcal{R}} = \mathcal{D}_{\ell_p}$ with \mathcal{D}_{ℓ_p} as in (9), $\mathcal{L}_{\mathcal{R}} = \{0\}$. The dynamics are specified by

$$\left(-i_{\mathcal{R}}(t), i_{\mathcal{R}}(t), u_{\mathcal{R}}(t), u_{\mathcal{R}}(t)\right) \in \mathcal{D}_{\mathcal{R}}, \quad (-i_{\mathcal{R}}(t), u_{\mathcal{R}}(t)) \in \mathcal{R}_{\mathcal{R}}, \tag{10}$$

If, for some accretive function $g : \mathbb{R}^{\ell_p} \rightarrow \mathbb{R}^{\ell_p}$ (that is, $\phi_{\mathcal{R}}^\top g(\phi_{\mathcal{R}}) \geq 0$ for all $\phi_{\mathcal{R}} \in \mathbb{R}^{\ell_p}$), $\mathcal{R}_{\mathcal{R}}$ reads

$$\mathcal{R}_{\mathcal{R}} = \{(-i_{\mathcal{R}}, u_{\mathcal{R}}) \in \mathbb{R}^{2\ell_p} \mid i_{\mathcal{R}} = g(u_{\mathcal{R}})\},$$

then (10) leads to $i_{\mathcal{R}}(t) = g(u_{\mathcal{R}}(t))$. That is, $(\mathcal{D}_{\mathcal{R}}, \mathcal{L}_{\mathcal{R}}, \mathcal{R}_{\mathcal{R}})$ describes a conductance with ℓ_p ports. On the other hand, if for some accretive function $r : \mathbb{R}^{\ell_p} \rightarrow \mathbb{R}^{\ell_p}$,

$$\mathcal{R}_{\mathcal{R}} = \{(-i_{\mathcal{R}}, u_{\mathcal{R}}) \in \mathbb{R}^{2\ell_p} \mid u_{\mathcal{R}} = r(i_{\mathcal{R}})\}$$

then (10) leads to $u_{\mathcal{R}}(t) = r(i_{\mathcal{R}}(t))$, i.e. $(\mathcal{D}_{\mathcal{R}}, \mathcal{L}_{\mathcal{R}}, \mathcal{R}_{\mathcal{R}})$ models a resistance with ℓ_p ports.

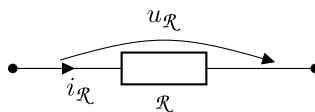


Fig. 10. Resistance/conductance: circuit symbol.

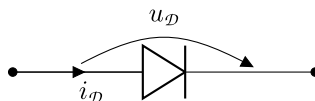


Fig. 11. Circuit symbol of a diode.

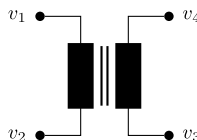


Fig. 12. Circuit symbol of a transformer.

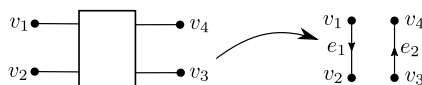


Fig. 13. Deriving the underlying graph of a transformer.

If the conductance/resistance has two terminals, then we obtain a conventional conductance/resistance with one port as in Fig. 10 (see Fig. 11).

Remark 3.1. Resistances form a pathological case of a pH system, since the underlying Lagrange submanifold is trivial (cf. Remark 2.13). Therefore, the ‘dynamics’ of the pH system are actually ‘statics’. The same holds for the models diodes, transformers and transistors which are discussed in the sequel.

3.2.4. Ideal and PN-junction diodes

An ideal diode is modeled as a two-terminal component $(\mathcal{D}_d, \mathcal{L}_d, \mathcal{R}_d)$ with one port (see Fig. 7), and dynamics

$$(-i_d(t), i_d(t), u_d(t), u_d(t)) \in \mathcal{D}_d, (j_d(t), \phi_d(t)) \in \mathcal{R}_d,$$

where $\mathcal{D}_d = \mathcal{D}_1$ with \mathcal{D}_1 as defined in (9), $\mathcal{L}_d = \{0\}$ and

$$\mathcal{R}_d = \{(-i_d, u_d) \in \mathbb{R}^2 \mid i_d u_d = 0 \wedge i_d \leq 0 \wedge u_d \leq 0\}.$$

From this pH system, one can derive that

$$(i_d(t), u_d(t)) \in (\{0\} \times \mathbb{R}_{\leq 0}) \cup (\mathbb{R}_{\geq 0} \times \{0\}).$$

A PN-junction diode is modeled as a one-port component $(\mathcal{D}_d, \mathcal{L}_d, \mathcal{R}_d)$ with \mathcal{D}_d and \mathcal{L}_d as for the ideal diode, and the resistive relation is, for some constants $a, b > 0$, given by

$$\mathcal{R}_d = \{(-i_d, u_d) \in \mathbb{R}^2 \mid i_d = a \left(e^{\frac{u_d}{b}} - 1 \right)\}.$$

From the dynamics of this pH system, one can derive the characteristic equation [14, Eq. (39.46)]

$$i_d(t) = a \left(e^{\frac{u_d(t)}{b}} - 1 \right).$$

The PN-junction diode serves as an approximation for an ideal diode. In a certain sense, the behavior of a PN-junction diode indeed tends to that of the ideal diode, if $b \rightarrow 0$ (see Fig. 12).

3.2.5. Transformers

A transformer is modeled as a four-terminal component with two ports, see Fig. 13. It is described by the pH system $(\mathcal{D}_T, \mathcal{L}_T, \mathcal{R}_T)$, where we use the Dirac structure $\mathcal{D}_T = \mathcal{D}_2$ with \mathcal{D}_2 as defined in (9) and trivial Lagrange submanifold

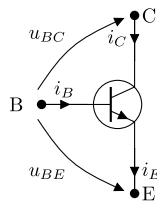


Fig. 14. Circuit symbol of a NPN transistor.

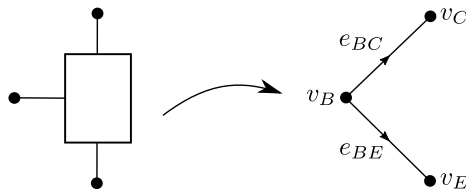


Fig. 15. Deriving the underlying graph of an NPN transistor.

$\mathcal{L}_T = \{0\}$. The dynamics are given by

$$\begin{aligned} (-i_{T1}(t), -i_{T2}(t), i_{T1}(t), i_{T2}(t), u_{T1}(t), u_{T2}(t), u_{T1}(t), u_{T2}(t)) &\in \mathcal{D}_T, \\ (-i_{T1}(t), -i_{T2}(t), u_{T1}(t), u_{T2}(t)) &\in \mathcal{R}_T, \end{aligned}$$

with, for some $T \in \mathbb{R}$,

$$\mathcal{R}_T = \left\{ (-i_{T1}, -i_{T2}, u_{T1}, u_{T2}) \in \mathbb{R}^4; \mid Ti_{T1} = -i_{T2}, u_{T1} = Tu_{T2} \right\}.$$

From this pH system, one can derive $Ti_{T1}(t) = -i_{T2}(t)$ and $u_{T1}(t) = Tu_{T2}(t)$, which means that a transformer is a power-conserving component (see Fig. 14).

3.2.6. NPN transistors

A transistor is a component with three terminals, which are called *emitter*, *basis* and *collector*. We replace this by a graph with two edges, which are respectively located between basis and collector, and basis and emitter, see Fig. 15. The behavior of a transistor of type NPN is often modeled by the Ebers–Moll model [24, Eqs. (5.26) & (5.27)], which can, in a certain voltage and current range around zero, be summarized by the equations

$$\begin{aligned} i_C(t) &= i_S \left(e^{\frac{u_{BE}(t)}{V_T}} - 1 \right) - \frac{i_S}{\alpha_R} \left(e^{\frac{u_{BC}(t)}{V_T}} - 1 \right), \\ i_E(t) &= \frac{i_S}{\alpha_F} \left(e^{\frac{u_{BE}(t)}{V_T}} - 1 \right) - i_S \left(e^{\frac{u_{BC}(t)}{V_T}} - 1 \right), \end{aligned} \tag{11}$$

for some constants $\alpha_F \in \left[\frac{50}{51}, \frac{1000}{1001} \right]$, $\alpha_R \in \left[\frac{1}{100}, \frac{1}{2} \right]$, $i_S \in [10^{-15}, 10^{-12}]$, $V_T \approx \frac{1}{40}$ [24, pp. 382–394]. Hereby, $i_C(t)$, $i_E(t)$, $u_{BE}(t)$, $u_{BC}(t)$ respectively denote the collector current, emitter current, basis–emitter voltage and basis–collector voltage. Note that, by the Kirchhoff laws, the basis current fulfills $i_B(t) = i_E(t) - i_C(t)$ and the collector emitter voltage is given by $u_{CE}(t) = u_{BE}(t) - u_{BC}(t)$. We model an NPN transistor as a ‘resistive’ two-port component $(\mathcal{D}_{\mathcal{N}}, \mathcal{L}_{\mathcal{N}}, \mathcal{R}_{\mathcal{N}})$ on two edges, where $\mathcal{D}_{\mathcal{N}} = \mathcal{D}_2$ with \mathcal{D}_2 as defined in (9), $\mathcal{L}_{\mathcal{N}} = \{0\}$ and

$$\mathcal{R}_{\mathcal{N}} = \left\{ (i_C, -i_E, u_{BC}, u_{BE}) \in \mathbb{R}^4 \left| \begin{aligned} i_C &= i_S \left(e^{\frac{u_{BE}}{V_T}} - 1 \right) - \frac{i_S}{\alpha_R} \left(e^{\frac{u_{BC}}{V_T}} - 1 \right), \\ i_E &= \frac{i_S}{\alpha_F} \left(e^{\frac{u_{BE}}{V_T}} - 1 \right) - i_S \left(e^{\frac{u_{BC}}{V_T}} - 1 \right), \end{aligned} \right. \right\} \cap U_0,$$

where $U_0 \subset \mathbb{R}^4$ is a neighborhood of the origin. The dynamics of the system read

$$(i_C(t), -i_E(t), -i_C(t), i_E(t), u_{BC}(t), u_{BE}(t), u_{BC}(t), u_{BE}(t)) \in \mathcal{D}_{\mathcal{N}}, (i_C(t), -i_E(t), u_{BC}(t), u_{BE}(t)) \in \mathcal{R}_{\mathcal{N}},$$

which implies (11), at least as long as $(i_C(t), -i_E(t), u_{BC}(t), u_{BE}(t)) \in U_0$. Note that we have provided the collector current $i_C(t)$ with another sign, since it is – in contrast to the emitter current and the basis–emitter current – directed contrarily to the basis–collector current.

Note that, if we choose $U_0 = \mathbb{R}^4$, then the relation $\mathcal{R}_{\mathcal{N}}$ is not resistive, since for there may exist quadruples $(i_C, -i_E, u_{BC}, u_{BE}) \in \mathcal{R}_{\mathcal{N}}$ holds $i_C u_{BC} - i_E u_{BE} > 0$. However, we can show that $\mathcal{R}_{\mathcal{N}}$ is resistive for a suitable neighborhood

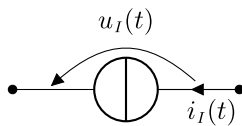


Fig. 16. Circuit symbol of a current source.

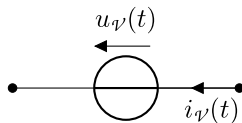


Fig. 17. Circuit symbol of a voltage source.

$U_0 \subset \mathbb{R}^4$ of the origin. This can be seen as follows: Since for $(u_{BC}, u_{BE}) \in (\mathbb{R} \setminus \{0\})^2$ holds

$$\begin{aligned} & \begin{pmatrix} u_{BC} \\ u_{BE} \end{pmatrix}^\top \begin{pmatrix} -\frac{i_S}{\alpha_R} \left(e^{\frac{u_{BC}}{V_T}} - 1 \right) + i_S \left(e^{\frac{u_{BE}}{V_T}} - 1 \right) \\ i_S \left(e^{\frac{u_{BC}}{V_T}} - 1 \right) - \frac{i_S}{\alpha_F} \left(e^{\frac{u_{BE}}{V_T}} - 1 \right) \end{pmatrix} \\ &= \begin{pmatrix} u_{BC} \\ u_{BE} \end{pmatrix}^\top \underbrace{\begin{bmatrix} -\frac{i_S}{\alpha_R u_{BC}} \left(e^{\frac{u_{BC}}{V_T}} - 1 \right) & \frac{i_S}{u_{BE}} \left(e^{\frac{u_{BE}}{V_T}} - 1 \right) \\ \frac{i_S}{u_{BC}} \left(e^{\frac{u_{BC}}{V_T}} - 1 \right) & -\frac{i_S}{\alpha_F u_{BE}} \left(e^{\frac{u_{BE}}{V_T}} - 1 \right) \end{bmatrix}}_{=: A(u_{BC}, u_{BE})} \begin{pmatrix} u_{BC} \\ u_{BE} \end{pmatrix}. \end{aligned}$$

Namely, by using that $A(\cdot, \cdot)$ has a continuous extension to \mathbb{R}^2 with

$$A(0, 0) = \frac{i_S}{V_T} \cdot \begin{bmatrix} -\frac{1}{\alpha_R} & 1 \\ 1 & -\frac{1}{\alpha_F} \end{bmatrix}.$$

By $\alpha_F \in [\frac{50}{51}, \frac{1000}{1001}]$, $\alpha_R \in [\frac{1}{100}, \frac{1}{2}]$, we have $\alpha_F \cdot \alpha_R < 1$, which leads to negative definiteness of $A(0, 0) = \frac{1}{2}(A(0, 0) + A(0, 0)^\top)$. The continuity of $(u_{BC}, u_{BE}) \mapsto \frac{1}{2}(A(u_{BC}, u_{BE}) + A(u_{BC}, u_{BE})^\top)$ implies that there exists some neighborhood $U_0 \subset \mathbb{R}^4$ such that this function takes values in the cone of negative definite matrices on U_0 . This consequences that, by taking this neighborhood U_0 , $\mathcal{R}_{\mathcal{N}}$ is a resistive relation.

3.2.7. Current and voltage sources

The sources of the electrical circuit represent the ports of the system, that is points at which physical interaction of the electrical circuit with the environment happens. We may distinguish two types of sources: *current sources* and *voltage sources*, see Figs. 16 and 17. The name indicates which physical variable is controlled or influenced by the environment. This variable is also denoted as *input*, while the other is denoted as *output*. However, this distinction is not relevant for the *geometrical* formulation of pH systems (cf. [15]). We unite both classes under the term *sources*. These have two terminals, and, consequently, one port (see Fig. 7). Sources are modeled as a pH system $(\mathcal{D}_s, \mathcal{L}_s, \mathcal{R}_s)$, where the Dirac structure is $\mathcal{D}_s = \mathcal{D}_1$ with \mathcal{D}_1 as defined in (9), and the Lagrange submanifold and resistive relation are trivial, i.e., $\mathcal{L}_s = \mathcal{R}_s = \{0\}$. The dynamics are

$$(-i_s(t), i_s(t), u_s(t), u_s(t)) \in \mathcal{D}_s.$$

Example 3.2 (AC/DC Converter). We illustrate our methodology by considering an AC/DC converter, which we model by the electrical circuit shown in Fig. 18. The AC/DC converter consists of a source $s = (\mathcal{D}_s, \mathcal{L}_s, \mathcal{R}_s)$, a transformer $\tau = (\mathcal{D}_\tau, \mathcal{L}_\tau, \mathcal{R}_\tau)$, four PN-junction diodes $j_i = (\mathcal{D}_{j_i}, \mathcal{L}_{j_i}, \mathcal{R}_{j_i})$ for $i \in \{1, \dots, 4\}$, a capacitor $c = (\mathcal{D}_c, \mathcal{L}_c, \mathcal{R}_c)$, and a ‘sink’ $o = (\mathcal{D}_o, \mathcal{L}_o, \mathcal{R}_o)$ (modeled like a source), which are connected by the vertices v_1, \dots, v_6 as shown in Fig. 19. The circuit graph $\mathcal{G} = (V, E, \text{init}, \text{ter})$ with $V = \{v_1, \dots, v_6\}$ and $E = \{e_1, \dots, e_9\}$ has two components, and we ground the nodes below the voltage source and the capacitance, i.e., we choose $S = \{v_2, v_3\}$. Let $A \in \mathbb{R}^{4 \times 9}$ be obtained from the incidence matrix of \mathcal{G} by deleting the rows corresponding to the grounded nodes. We arrive at a pH system $(\mathcal{D}, \mathcal{L}, \mathcal{R})$ as

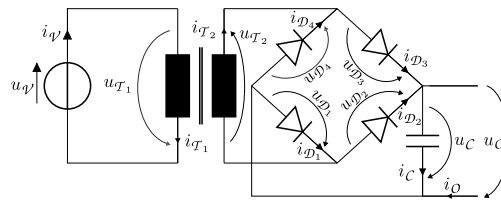


Fig. 18. AC/DC converter circuit.

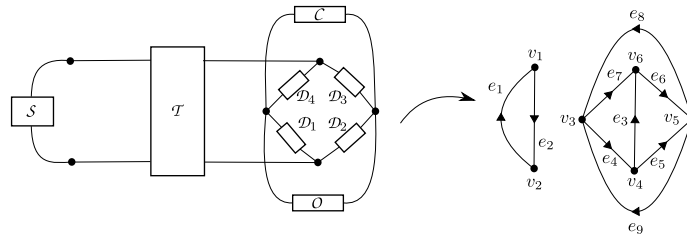


Fig. 19. Obtaining the underlying graph of the AC/DC converter.

in (8), whose dynamics read

$$\left(\frac{d}{dt} \begin{pmatrix} -q_1 \\ -q_4 \\ -q_5 \\ -q_6 \\ -q_C \end{pmatrix}, \begin{pmatrix} -i_{T1} \\ -i_{T2} \\ -i_{D1} \\ -i_{D2} \\ -i_{D3} \\ -i_{D4} \end{pmatrix}, \begin{pmatrix} -i_\psi \\ -i_O \end{pmatrix}, \begin{pmatrix} \phi_1 \\ \phi_4 \\ \phi_5 \\ \phi_6 \\ u_C \end{pmatrix}, \begin{pmatrix} u_{T1} \\ u_{T2} \\ u_{D1} \\ u_{D2} \\ u_{D3} \\ u_{D4} \end{pmatrix}, \begin{pmatrix} u_\psi \\ u_O \end{pmatrix} \right) \in \mathcal{D},$$

$$\left(\begin{pmatrix} -q_1 \\ -q_4 \\ -q_5 \\ -q_6 \\ -q_C \end{pmatrix}, \begin{pmatrix} \phi_1 \\ \phi_4 \\ \phi_5 \\ \phi_6 \\ u_C \end{pmatrix} \right) \in \mathcal{L}, \quad \left(\begin{pmatrix} -i_{T1} \\ -i_{T2} \\ -i_{D1} \\ -i_{D2} \\ -i_{D3} \\ -i_{D4} \end{pmatrix}, \begin{pmatrix} u_{T1} \\ u_{T2} \\ u_{D1} \\ u_{D2} \\ u_{D3} \\ u_{D4} \end{pmatrix} \right) \in \mathcal{R}.$$

4. Comparison with other formulations of electrical circuits

With the attention electrical circuits attracted over the past decades, quite a bunch of ‘standard formulations’ of the dynamics have emerged. An overview of popular models in the context of DAEs is found in [19]. We compare for certain electrical circuits the dynamics of our port-Hamiltonian modeling (8) with other equations used in the modeling of electrical circuits.

4.1. The (charge/flux-oriented) modified nodal analysis

Let an electrical circuit consisting of conductances, inductances, capacitances and sources. Let

$$\begin{aligned} (\mathcal{D}_{\mathcal{R}_i}, \mathcal{L}_{\mathcal{R}_i}, \mathcal{R}_{\mathcal{R}_i})_{i \in \{1, \dots, l_{\mathcal{R}}\}}, & \quad (\mathcal{D}_{\mathcal{L}_i}, \mathcal{L}_{\mathcal{L}_i}, \mathcal{R}_{\mathcal{L}_i})_{i \in \{1, \dots, l_{\mathcal{L}}\}}, \\ (\mathcal{D}_{\mathcal{C}_i}, \mathcal{L}_{\mathcal{C}_i}, \mathcal{R}_{\mathcal{C}_i})_{i \in \{1, \dots, l_{\mathcal{C}}\}}, & \quad (\mathcal{D}_{\mathcal{S}_i}, \mathcal{L}_{\mathcal{S}_i}, \mathcal{R}_{\mathcal{S}_i})_{i \in \{1, \dots, l_{\mathcal{S}}\}}. \end{aligned}$$

be the pH systems modeling the components as derived in Section 3.1. Let ℓ_{p, \mathcal{R}_i} be the number of ports of the component modeled by $(\mathcal{D}_{\mathcal{R}_i}, \mathcal{L}_{\mathcal{R}_i}, \mathcal{R}_{\mathcal{R}_i})$, and let ℓ_{p, \mathcal{L}_i} and ℓ_{p, \mathcal{C}_i} be analogously defined. Moreover, let

$$m_{\mathcal{R}} = \sum_{i=1}^{l_{\mathcal{R}}} \ell_{p, \mathcal{R}_i}, \quad m_{\mathcal{L}} = \sum_{i=1}^{l_{\mathcal{L}}} \ell_{p, \mathcal{L}_i}, \quad m_{\mathcal{C}} = \sum_{i=1}^{l_{\mathcal{C}}} \ell_{p, \mathcal{C}_i}, \quad m_{\mathcal{S}} = l_{\mathcal{S}},$$

and introduce

$$i_{\mathcal{R}} = \begin{pmatrix} i_{\mathcal{R}1} \\ \vdots \\ i_{\mathcal{R}m_{\mathcal{R}}} \end{pmatrix}, \quad i_{\mathcal{L}} = \begin{pmatrix} i_{\mathcal{L}1} \\ \vdots \\ i_{\mathcal{L}m_{\mathcal{L}}} \end{pmatrix}, \quad i_{\mathcal{C}} = \begin{pmatrix} i_{\mathcal{C}1} \\ \vdots \\ i_{\mathcal{C}m_{\mathcal{C}}} \end{pmatrix}, \quad i_{\mathcal{S}} = \begin{pmatrix} i_{\mathcal{S}1} \\ \vdots \\ i_{\mathcal{S}m_{\mathcal{S}}} \end{pmatrix}, \quad i = \begin{pmatrix} i_{\mathcal{R}} \\ i_{\mathcal{L}} \\ i_{\mathcal{C}} \\ i_{\mathcal{S}} \end{pmatrix},$$

and analogous notations for $u_{\mathcal{R}}, u_L, u_C, u_S, u$, as well as

$$q_C = \begin{pmatrix} q_{C1} \\ \vdots \\ q_{Cm_C} \end{pmatrix}, \quad \psi_L = \begin{pmatrix} \psi_{L1} \\ \vdots \\ \psi_{Lm_L} \end{pmatrix}, \quad g(u_{\mathcal{R}}) = \begin{pmatrix} g_1(u_{\mathcal{R}1}) \\ \vdots \\ g_{m_{\mathcal{R}}}(u_{\mathcal{R}m_{\mathcal{R}}}) \end{pmatrix},$$

$$H_C(q_C) = \sum_{i=1}^{m_C} H_{Ci}(q_{Ci}), \quad H_L(\psi_L) = \sum_{i=1}^{m_L} H_{Li}(\psi_{Li}).$$

Further, let $\mathcal{G} = (V, E, \text{init}, \text{ter})$ be the graph induced by the electrical circuit with $|V| = n$ and $|E| = m$. Let S be the set of grounded vertices (cf. Definition 2.12), and let $A \in \mathbb{R}^{(n-|S|) \times m}$ be obtained from the incidence matrix of \mathcal{G} by deleting the rows corresponding to the vertices in S . By a suitable reordering, we may sort into edges to the specific components, i.e.,

$$A = [A_{\mathcal{R}} \quad A_L \quad A_C \quad A_S],$$

where the columns of $A_{\mathcal{R}} \in \mathbb{R}^{(n-|S|) \times m_{\mathcal{R}}}$, $A_L \in \mathbb{R}^{(n-|S|) \times m_L}$, $A_C \in \mathbb{R}^{(n-|S|) \times m_C}$ and $A_S \in \mathbb{R}^{(n-|S|) \times m_S}$ respectively represent the edges corresponding to conductances, inductances, capacitances and sources. For the representation of the port-Hamiltonian dynamics of the electrical circuit, first note that the Dirac structure of the pH system

$$\bigtimes_{i=1}^{m_{\mathcal{R}}} (\mathcal{D}_{\mathcal{R}_i}, \mathcal{L}_{\mathcal{R}_i}, \mathcal{R}_{\mathcal{R}_i}) \times \bigtimes_{i=1}^{m_L} (\mathcal{D}_{L_i}, \mathcal{L}_{L_i}, \mathcal{R}_{L_i}) \times \bigtimes_{i=1}^{m_C} (\mathcal{D}_{C_i}, \mathcal{L}_{C_i}, \mathcal{R}_{C_i}) \times \bigtimes_{i=1}^{m_S} (\mathcal{D}_{S_i}, \mathcal{L}_{S_i}, \mathcal{R}_{S_i})$$

is given by

$$\mathcal{D}_{\text{prod}} = \left\{ \begin{aligned} &(-i_L, -i_C, -i_{\mathcal{R}}, i_{\mathcal{R}}, i_L, i_C, -i_S, i_S, i_L, u_C, u_{\mathcal{R}}, u_{\mathcal{R}}, u_L, u_C, u_S, u_S) \in \mathbb{R}^{2m} \times \mathbb{R}^{2m} \mid \\ &i_L, u_L \in \mathbb{R}^{m_L}, \quad i_C, u_C \in \mathbb{R}^{m_C}, \quad i_{\mathcal{R}}, u_{\mathcal{R}} \in \mathbb{R}^{m_{\mathcal{R}}}, \quad i_S, u_S \in \mathbb{R}^{m_S} \end{aligned} \right\}$$

and

$$\mathcal{D}_K^S(\mathcal{G}) = \left\{ \begin{aligned} &(j, i_{\mathcal{R}}, i_L, i_C, i_S, \phi, u_{\mathcal{R}}, u_L, u_C, u_S) \in \mathbb{R}^{n-|S|} \times \mathbb{R}^m \times \mathbb{R}^{n-|S|} \times \mathbb{R}^m \mid \\ &\begin{bmatrix} I & A_{\mathcal{R}} & A_L & A_C & A_S \\ 0 & 0 & 0 & 0 & 0 \\ 0 & 0 & 0 & 0 & 0 \\ 0 & 0 & 0 & 0 & 0 \\ 0 & 0 & 0 & 0 & 0 \end{bmatrix} \begin{pmatrix} j \\ i_{\mathcal{R}} \\ i_L \\ i_C \\ i_S \end{pmatrix} + \begin{bmatrix} 0 & 0 & 0 & 0 & 0 \\ -A_{\mathcal{R}}^T & I & 0 & 0 & 0 \\ -A_L^T & 0 & I & 0 & 0 \\ -A_C^T & 0 & 0 & I & 0 \\ -A_S^T & 0 & 0 & 0 & I \end{bmatrix} \begin{pmatrix} \phi \\ u_{\mathcal{R}} \\ u_L \\ u_C \\ u_S \end{pmatrix} = 0 \end{aligned} \right\}.$$

It follows that the Dirac structure of

$$(\mathcal{D}_K^S(\mathcal{G}), \mathcal{L}_K^S(\mathcal{G}), \{0\}) \circ \left(\bigtimes_{i=1}^N (\mathcal{D}_i, \mathcal{L}_i, \mathcal{R}_i) \right)$$

is given by

$$\mathcal{D} = \left\{ \begin{aligned} &(j, -u_L, -i_C, -i_{\mathcal{R}}, -i_S, \phi, i_L, u_C, u_{\mathcal{R}}, u_S) \in \mathbb{R}^{n-|S|} \times \mathbb{R}^m \times \mathbb{R}^{n-|S|} \times \mathbb{R}^m \mid \\ &\begin{bmatrix} I & 0 & A_C & A_{\mathcal{R}} & A_S \\ 0 & 0 & 0 & 0 & 0 \\ 0 & -I & 0 & 0 & 0 \\ 0 & 0 & 0 & 0 & 0 \\ 0 & 0 & 0 & 0 & 0 \end{bmatrix} \begin{pmatrix} j \\ -u_L \\ -i_C \\ -i_{\mathcal{R}} \\ -i_S \end{pmatrix} + \begin{bmatrix} 0 & -A_L & 0 & 0 & 0 \\ -A_{\mathcal{R}}^T & 0 & 0 & I & 0 \\ -A_L^T & 0 & 0 & 0 & 0 \\ -A_C^T & 0 & I & 0 & 0 \\ -A_S^T & 0 & 0 & 0 & I \end{bmatrix} \begin{pmatrix} \phi \\ i_L \\ u_C \\ u_{\mathcal{R}} \\ u_S \end{pmatrix} = 0 \end{aligned} \right\}, \tag{12a}$$

whereas the Lagrange submanifold and resistive relation read

$$\mathcal{L} = \left\{ (q, \psi_L, q_C, \phi, i_L, u_C) \in \mathbb{R}^{n-|S|} \times \mathbb{R}^{m_L} \times \mathbb{R}^{m_C} \times \mathbb{R}^{n-|S|} \times \mathbb{R}^{m_L} \times \mathbb{R}^{m_C} \mid \right.$$

$$q = 0 \wedge i_L = \nabla H_L(\psi_L) \wedge u_c = \nabla H_C(q_C) \Big\}, \tag{12b}$$

$$\mathcal{R} = \left\{ (-i_{\mathcal{R}}, u_{\mathcal{R}}) \in \mathbb{R}^{m_{\mathcal{R}}} \times \mathbb{R}^{m_{\mathcal{R}}}; i_{\mathcal{R}} = g(u_{\mathcal{R}}) \right\}. \tag{12c}$$

The triple $(\mathcal{D}, \mathcal{L}, \mathcal{R})$ with \mathcal{D} , \mathcal{L} and \mathcal{R} as in (12) is the port-Hamiltonian representation of a circuit with conductances, inductances, capacitances and sources in a compact form. The dynamics of $(\mathcal{D}, \mathcal{L}, \mathcal{R})$ read

$$\begin{aligned} & \left(-\frac{d}{dt}q(t), -\frac{d}{dt}\psi_L(t), -\frac{d}{dt}q_C(t), -i_{\mathcal{R}}(t), -i_S(t), \phi(t), i_L(t), u_C(t), u_{\mathcal{R}}(t), u_S(t) \right) \in \mathcal{D}, \\ & (q(t), \psi_L(t), q_C(t), \phi(t), i_L(t), u_C(t)) \in \mathcal{L}, \quad (-i_{\mathcal{R}}(t), e_{\mathcal{R}}(t)) \in \mathcal{R}, \end{aligned}$$

which is equivalent to

$$\begin{bmatrix} I & 0 & A_C & A_{\mathcal{R}} & A_S \\ 0 & 0 & 0 & 0 & 0 \\ 0 & -I & 0 & 0 & 0 \\ 0 & 0 & 0 & 0 & 0 \\ 0 & 0 & 0 & 0 & 0 \end{bmatrix} \begin{pmatrix} -\frac{d}{dt}q(t) \\ -\frac{d}{dt}\psi_L(t) \\ -\frac{d}{dt}q_C(t) \\ -i_{\mathcal{R}}(t) \\ -i_S(t) \end{pmatrix} + \begin{bmatrix} 0 & -A_L & 0 & 0 & 0 \\ -A_{\mathcal{R}}^\top & 0 & 0 & I & 0 \\ -A_L^\top & 0 & 0 & 0 & 0 \\ -A_C^\top & 0 & I & 0 & 0 \\ -A_S^\top & 0 & 0 & 0 & I \end{bmatrix} \begin{pmatrix} \phi(t) \\ i_L(t) \\ u_C(t) \\ u_{\mathcal{R}}(t) \\ u_S(t) \end{pmatrix} = 0,$$

$$q(t) = 0, \quad i_L(t) = \nabla H_L(\psi_L(t)), \quad u_C(t) = \nabla H_C(q_C(t)), \quad i_{\mathcal{R}}(t) = g(u_{\mathcal{R}}(t)).$$

Plugging in the latter relations, we obtain

$$\begin{aligned} A_C \frac{d}{dt}q_C(t) + A_{\mathcal{R}}g(A_{\mathcal{R}}^\top \phi(t)) + A_L i_L(t) + A_S i_S(t) &= 0, \\ -A_L^\top \phi(t) + \frac{d}{dt}\psi_L(t) &= 0, \\ -A_S^\top \phi(t) + u_S(t) &= 0, \\ A_C^\top \phi(t) - \nabla H_C(q_C(t)) &= 0, \\ i_L(t) - \nabla H_L(\psi(t)) &= 0. \end{aligned} \tag{13}$$

If we additionally assume that $\nabla H_C \in C^1(\mathbb{R}^{m_C}, \mathbb{R}^{m_C})$, $\nabla H_L \in C^1(\mathbb{R}^{m_L}, \mathbb{R}^{m_L})$ are homeomorphisms, we can introduce the inverse functions $Q_C := (\nabla H_C)^{-1} \in C(\mathbb{R}^{m_C}, \mathbb{R}^{m_C})$, $\Psi_L := (\nabla H_L)^{-1} \in C(\mathbb{R}^{m_L}, \mathbb{R}^{m_L})$. Then (13) leads to $q_C(t) = Q_C(u_C(t))$ and $\psi_L(t) = \Psi_L(i_L(t))$. Further decomposing

$$A_S = [A_I \quad A_V], \quad u_S = \begin{pmatrix} u_I \\ u_V \end{pmatrix}, \quad i_S = \begin{pmatrix} i_I \\ i_V \end{pmatrix}$$

into edges, voltages and currents to current and voltage sources, we see that (13) leads to the so-called *charge/flux-oriented modified nodal analysis* [2, Eq. (3.21)]

$$\begin{aligned} A_C \frac{d}{dt}q_C(t) + A_{\mathcal{R}}g(u_{\mathcal{R}}(t)) + A_L i_L(t) + A_I i_I(t) + A_V i_V(t) &= 0, \\ -A_L^\top \phi(t) + \frac{d}{dt}\psi_L(t) &= 0, \\ -A_V^\top \phi(t) + u_V(t) &= 0, \\ q_C(t) - Q_C(A_C^\top \phi(t)) &= 0, \\ \psi_L(t) - \Psi_L(i_L(t)) &= 0. \end{aligned} \tag{MNA c/f}$$

If we additionally assume that $Q_C \in C(\mathbb{R}^{m_C}, \mathbb{R}^{m_C})$ and $\Psi_L \in C^1(\mathbb{R}^{m_L}, \mathbb{R}^{m_L})$, then we can, by denoting the Jacobians by $c(u_C) = \frac{d}{du_C}Q_C(u_C)$ and $\ell(i_L) = \frac{d}{di_L}\Psi_L(i_L)$, reformulate (MNA c/f) to obtain the *modified nodal analysis* [18, Eq. (52)]

$$\begin{aligned} A_C c(A_C^\top \phi(t)) A_C^\top \frac{d}{dt}\phi(t) + A_{\mathcal{R}}g(A_{\mathcal{R}}^\top \phi(t)) + A_L i_L(t) + A_I i_I(t) + A_V i_V(t) &= 0, \\ -A_L^\top \phi(t) + \ell(i_L(t)) \frac{d}{dt}i_L(t) &= 0, \\ -A_V^\top \phi(t) + u_V(t) &= 0. \end{aligned} \tag{MNA}$$

Note that, if $H_C \in C^2(\mathbb{R}^{m_C}, \mathbb{R})$, $H_L \in C^2(\mathbb{R}^{m_L}, \mathbb{R})$, then $c(u_C)$ and $\ell(i_L)$ are, respectively, the inverses of the Hessians of H_C and H_L at $Q_C(u_C)$ and $\Psi_L(i_L)$.

4.2. The (charge/flux-oriented) modified loop analysis

We present an alternative modeling involving the pH system $(\mathcal{D}'_K(\mathcal{G}), \mathcal{L}'_K(\mathcal{G}), \{0\})$ with $\mathcal{D}'_K(\mathcal{G})$ and $\mathcal{L}'_K(\mathcal{G})$ as in (6). That is, the loops in the underlying graph structure is now taken to model the Kirchhoff laws. First note that the external flows

and efforts variables in the pH system $(\mathcal{D}'_K(\mathcal{G}), \mathcal{L}'_K(\mathcal{G}), \{0\})$ in Remark 2.13 are, respectively, the current and the voltage of the components, while the external flows and efforts variables in $(\mathcal{D}'_K(\mathcal{G}), \mathcal{L}'_K(\mathcal{G}), \{0\})$ are, respectively, the voltage and the current of the components. This means that in order to obtain a pH system $(\mathcal{D}', \mathcal{L}', \mathcal{R}')$ describing the circuit dynamics by performing an interconnection of $(\mathcal{D}'_K(\mathcal{G}), \mathcal{L}'_K(\mathcal{G}), \{0\})$ with $N \in \mathbb{N}$ electrical components $(\mathcal{D}_i, \mathcal{L}_i, \mathcal{R}_i)_{i \in \{1, \dots, N\}}$, i.e.,

$$(\mathcal{D}', \mathcal{L}', \mathcal{R}') := (\mathcal{D}'_K(\mathcal{G}), \mathcal{L}'_K(\mathcal{G}), \{0\}) \circ \left(\bigotimes_{i=1}^N (\mathcal{D}_i, \mathcal{L}_i, \mathcal{R}_i) \right),$$

we have to adjust the definition of the components by interchanging the role of the effort and flow variables, which is possible by an argument similar to one in Remark 2.13. Given an electrical circuit consisting of resistances, inductances, capacitances and sources, it can, completely analogous to Section 4.1, be shown that the dynamics of $(\mathcal{D}', \mathcal{L}', \mathcal{R}')$ lead, under certain additional invertibility and smoothness assumptions on the functions representing capacitances and inductances, to the *modified loop analysis* [18, Eq. (53)]

$$\begin{aligned} B_L \mathcal{L}(B_L^\top u(t)) B_L^\top \frac{d}{dt} u(t) + B_R r(B_R^\top u(t)) + B_C u_C(t) + B_I u_I(t) + B_V u_V(t) &= 0, \\ -B_C^\top u(t) + C(u_C(t)) \frac{d}{dt} u_C(t) &= 0, \\ -B_I^\top u(t) + i_I(t) &= 0. \end{aligned}$$

Acknowledgments

This work was supported by the grants RE 2917/4-1 and WO 2056/1-1 “Systems theory of partial differential-algebraic equations” by the Deutsche Forschungsgemeinschaft (DFG).

References

- [1] B. Andrásfai, Graph Theory: Flows, Matrices, Taylor & Francis, New York London, 1991.
- [2] S. Bächle, Numerical Solution of Differential-Algebraic Systems Arising in Circuit Simulation (PhD thesis), Fakultät II - Mathematik und Naturwissenschaften, Technische Universität Berlin, Berlin, Germany, 2007.
- [3] M. Barbero-Liñán, H. Cendra, E. García-Toraño Andrés, D. Martín de Diego, New insights in the geometry and interconnection of port-Hamiltonian systems, J. Phys. A 51 (37) (2018) 375201, (30 p.).
- [4] C. Beattie, V. Mehrmann, H. Xu, H. Zwart, Linear port-Hamiltonian descriptor systems, Math. Control Signals Syst. 30 (4) (2018) 17.
- [5] J. Behrndt, M. Kurla, A.J. van der Schaft, H. Zwart, Dirac structures and their composition on Hilbert spaces, J. Math. Anal. Appl. 372 (2) (2010) 402–422.
- [6] P.C. Breedveld, B. Maschke, A.J. van der Schaft, An intrinsic Hamiltonian formulation of the dynamics of LC-circuits, IEEE Trans. Circuits Syst. I. Regul. Pap. 42 (2) (1995) 73–82.
- [7] J. Cervera, A.J. van der Schaft, A. Baños, Interconnection of port-Hamiltonian systems and composition of Dirac structures, Automatica 43 (2) (2007) 212–225.
- [8] T.J. Courant, Dirac manifolds, Trans. Amer. Math. Soc. 319 (1990) 631–661.
- [9] R. Diestel, Graph Theory, fifth ed., in: Graduate Texts in Mathematics, vol. 173, Springer, Berlin, 2017.
- [10] D. Jeltsema, A.J. van der Schaft, Port-Hamiltonian systems theory: An introductory overview, Found. Trends Syst. Control 1 (2–3) (2014) 173–387.
- [11] J.M. Lee, Introduction to Smooth Manifolds, second ed., in: Graduate Texts in Mathematics, vol. 218, Springer, New York, 2012.
- [12] B. Maschke, A.J. van der Schaft, Generalized port-Hamiltonian DAE systems, Systems Control Lett. 121 (2018) 31–37.
- [13] B. Maschke, A.J. van der Schaft, Dirac and Lagrange algebraic constraints in nonlinear port-Hamiltonian systems, Technical report, 2019.
- [14] W. Mathis, A. Reibiger, Kupfmüller Theoretische Elektrotechnik, twentieth ed., Springer Vieweg, Berlin, 2017.
- [15] C. Mehl, V. Mehrmann, M. Wojtylak, Linear algebra properties of dissipative Hamiltonian descriptor systems, SIAM J. Matrix Anal. Appl. 39 (3) (2018) 1489–1519.
- [16] C. Melchiorri, A.J. van der Schaft, Port-Hamiltonian formulation of infinite dimensional systems - I. Modeling, in: 43rd IEEE Conference on Decision and Control, December 14–17, 2004, Atlantis, Paradise Island, Bahamas, 2004.
- [17] C. Melchiorri, A.J. van der Schaft, Port-Hamiltonian formulation of infinite dimensional systems - II. Boundary control by interconnection, in: 43rd IEEE Conference on Decision and Control, December 14–17, 2004, Atlantis, Paradise Island, Bahamas, 2004.
- [18] T. Reis, Mathematical modeling and analysis of nonlinear time-invariant RLC circuits, in: P. Benner, R. Findeisen, D. Flockerzi, U. Reichl, K. Sundmacher (Eds.), Large-Scale Networks in Engineering and Life Sciences, in: Modeling and Simulation in Science, Engineering and Technology, Birkhäuser, Basel, 2014, pp. 125–198.
- [19] R. Riaza, DAEs in circuit modelling: A survey, in: Achim Ilchmann, Timo Reis (Eds.), Surveys in Differential-Algebraic Equations I, in: Differential-Algebraic Equations Forum, Springer, Berlin-Heidelberg, 2013, pp. 97–136.
- [20] A.J. van der Schaft, Characterization and partial synthesis of the behavior of resistive circuits at their terminals, Systems Control Lett. 59 (7) (2010) 423–428.
- [21] A.J. van der Schaft, Port-Hamiltonian differential-algebraic systems, in: A. Ilchmann, T. Reis (Eds.), Surveys in Differential-Algebraic Equations I, in: Differential-Algebraic Equations Forum, Springer, Berlin Heidelberg, 2013, pp. 173–226.
- [22] A.J. van der Schaft, L_2 -Gain and Passivity Techniques in Nonlinear Control, third ed., in: Lecture Notes in Control and Information Sciences, Springer, London, 2017.
- [23] A.J. van der Schaft, B. Maschke, Port-Hamiltonian systems on graphs, SIAM J. Control Optim. 51 (2) (2013) 906–937.
- [24] A.S. Sedra, K.C. Smith, Microelectronic Circuits, fifth ed., Oxford University Press, New York, 2004.
- [25] A. Venkatraman, A. van der Schaft, Energy shaping of port-Hamiltonian systems by using alternate passive input-output pairs, Eur. J. Control 16 (6) (2010) 665–677.
- [26] A. Venkatraman, A. van der Schaft, Interconnections of port-Hamiltonian systems: generating new passive outputs and feedback stabilization, IFAC Proc. Vol. 43 (14) (2010) 605–610.
- [27] J.C. Willems, Terminals and ports, IEEE Circuits Syst. Mag. 10 (4) (2010) 8–16.