

University of Groningen

## Prognostication using SpO<sub>2</sub>/FiO<sub>2</sub> in invasively ventilated ICU patients with ARDS due to COVID-19-Insights from the PRoVENT-COVID study

PRoVENT-COVID Collaborative Grp; Roozeman, Jan-Paul; Mazzinari, Guido; Neto, A. Serpa; Hollmann, M. W.; Paulus, F.; Schultz, Marcus J.; Pisani, Luigi; Algera, A. G.; Boers, L. S.

*Published in:*  
Journal of Critical Care

*DOI:*  
[10.1016/j.jcrc.2021.11.009](https://doi.org/10.1016/j.jcrc.2021.11.009)

**IMPORTANT NOTE: You are advised to consult the publisher's version (publisher's PDF) if you wish to cite from it. Please check the document version below.**

*Document Version*  
Publisher's PDF, also known as Version of record

*Publication date:*  
2022

[Link to publication in University of Groningen/UMCG research database](#)

### *Citation for published version (APA):*

PRoVENT-COVID Collaborative Grp, Roozeman, J-P., Mazzinari, G., Neto, A. S., Hollmann, M. W., Paulus, F., Schultz, M. J., Pisani, L., Algera, A. G., Boers, L. S., Bos, L. D. J., Botta, M., Dongelmans, D. A., Hollmann, M. W., Horn, J., Paulus, F., Pillay, J., Schultz, M. J., Neto, A. S., ... van Zanten, A. R. H. (2022). Prognostication using SpO<sub>2</sub>/FiO<sub>2</sub> in invasively ventilated ICU patients with ARDS due to COVID-19-Insights from the PRoVENT-COVID study. *Journal of Critical Care*, 68, 31-37. <https://doi.org/10.1016/j.jcrc.2021.11.009>

### **Copyright**

Other than for strictly personal use, it is not permitted to download or to forward/distribute the text or part of it without the consent of the author(s) and/or copyright holder(s), unless the work is under an open content license (like Creative Commons).

The publication may also be distributed here under the terms of Article 25fa of the Dutch Copyright Act, indicated by the "Taverne" license. More information can be found on the University of Groningen website: <https://www.rug.nl/library/open-access/self-archiving-pure/taverne-amendment>.

### **Take-down policy**

If you believe that this document breaches copyright please contact us providing details, and we will remove access to the work immediately and investigate your claim.

Downloaded from the University of Groningen/UMCG research database (Pure): <http://www.rug.nl/research/portal>. For technical reasons the number of authors shown on this cover page is limited to 10 maximum.



## Prognostication using SpO<sub>2</sub>/FiO<sub>2</sub> in invasively ventilated ICU patients with ARDS due to COVID-19 – Insights from the PRoVENT-COVID study<sup>☆</sup>

Jan-Paul Roozeman<sup>a,b,\*</sup>, Guido Mazzinari<sup>c,d</sup>, Ary Serpa Neto<sup>a,e</sup>, Markus W. Hollmann<sup>b</sup>, Frederique Paulus<sup>a</sup>, Marcus J. Schultz<sup>a,b,f</sup>, Luigi Pisani<sup>a,g,h</sup>, The PRoVENT-COVID Collaborative Group:<sup>1</sup>

Steering Committee: A.G. Algera<sup>1</sup>, L.S. Boers<sup>1</sup>, L.D.J. Bos<sup>1</sup>, M. Botta<sup>1</sup>, D.A. Dongelmans<sup>1</sup>, M.W. Hollmann<sup>2</sup>, J. Horn<sup>1</sup>, F. Paulus<sup>1,3</sup>, J. Pillay<sup>1,4</sup>, M.J. Schultz<sup>1,5,6</sup>, A. Serpa Neto<sup>7</sup>, A.M. Tsonas<sup>1</sup>, A.P.J. Vlaar<sup>1</sup>, and Study coordinators: M. Botta<sup>1</sup>, A.M. Tsonas<sup>1</sup>, and Investigators: S. Ahuja<sup>8</sup>, J.P. van Akkeren<sup>9</sup>, A.G. Algera<sup>1</sup>, C.K. Algoe<sup>1</sup>, R.B. van Amstel<sup>1</sup>, A. Artigas<sup>10</sup>, O.L. Baur<sup>1</sup>, P. van de Berg<sup>11</sup>, A.E. van den Berg<sup>12</sup>, D.C.J.J. Bergmans<sup>13</sup>, D.I. van den Berselaar<sup>1</sup>, F.A. Bertens<sup>1</sup>, A.J.G.H. Bindels<sup>11</sup>, M.M. de Boer<sup>1</sup>, S. den Boer<sup>14</sup>, L.S. Boers<sup>1</sup>, M. Bogerd<sup>1</sup>, L.D.J. Bos<sup>1</sup>, M. Botta<sup>1</sup>, J.S. Breel<sup>2</sup>, H. de Bruin<sup>1</sup>, S. de Bruin<sup>1</sup>, C.L. Bruna<sup>1</sup>, L.A. Buiteman-Kruizinga<sup>15</sup>, O.L. Cremer<sup>16</sup>, R.M. Determann<sup>17</sup>, W. Dieperink<sup>4</sup>, D.A. Dongelmans<sup>1</sup>, H.S. Franke<sup>4</sup>, M.S. Galek-Aldridge<sup>1</sup>, M.J. de Graaff<sup>18</sup>, L.A. Hagens<sup>1</sup>, J.J. Haringman<sup>19</sup>, S.T. van der Heide<sup>1</sup>, P.L.J. van der Heiden<sup>15</sup>, N.F.L. Heijnen<sup>13</sup>, S.J.P. Hiel<sup>9</sup>, L.L. Hoeijmakers<sup>1</sup>, L. Hol<sup>1,2</sup>, M.W. Hollmann<sup>2</sup>, M.E. Hoogendoorn<sup>19</sup>, J. Horn<sup>1</sup>, R. van der Horst<sup>20</sup>, E.L.K. Ie<sup>1</sup>, D. Ivanov<sup>1</sup>, N.P. Juffermans<sup>17</sup>, E. Kho<sup>1</sup>, E.S. de Klerk<sup>2</sup>, A.W.M.M. Koopman-van Gemert<sup>21</sup>, M. Koopmans<sup>17</sup>, S. Kucukcelebi<sup>1</sup>, M.A. Kuiper<sup>22</sup>, D.W. de Lange<sup>16</sup>, N. van Mourik<sup>1</sup>, S.G. Nijbroek<sup>1,2</sup>, M. Onrust<sup>4</sup>, E.A.N. Oostdijk<sup>23</sup>, F. Paulus<sup>1,3</sup>, C.J. Pennartz<sup>1</sup>, J. Pillay<sup>1,4</sup>, L. Pisani<sup>1</sup>, I.M. Purmer<sup>12</sup>, T.C.D. Rettig<sup>24</sup>, J.P. Roozeman<sup>1,2</sup>, M.T.U. Schuijt<sup>1</sup>, M.J. Schultz<sup>1,5,6</sup>, A. Serpa Neto<sup>7</sup>, M.E. Sleswijk<sup>25</sup>, M.R. Smit<sup>1</sup>, P.E. Spronk<sup>26</sup>, W. Stijlma<sup>1</sup>, A.C. Strang<sup>27</sup>, A.M. Tsonas<sup>1</sup>, P.R. Tuinman<sup>28</sup>, C.M.A. Valk<sup>1</sup>, F.L. Veen-Schra<sup>19</sup>, L.I. Veldhuis<sup>1</sup>, P. van Velzen<sup>29</sup>, W.H. van der Ven<sup>2</sup>, A.P.J. Vlaar<sup>1</sup>, P. van Vliet<sup>30</sup>, P.H.J. van der Voort<sup>4</sup>, L. van Welie<sup>31</sup>, H.J.F.T. Wesselink<sup>19</sup>, H.H. van der Wier-Lubbers<sup>19</sup>, B. van Wijk<sup>1</sup>, T. Winters<sup>1</sup>, W.Y. Wong<sup>1</sup>, A.R.H. van Zanten<sup>31</sup>

<sup>1</sup> Department of Intensive Care, Amsterdam University Medical Centers, location 'Academic Medical Center', Amsterdam, The Netherlands

<sup>2</sup> Department of Anaesthesiology, Amsterdam University Medical Centers, location 'Academic Medical Center', Amsterdam, The Netherlands

<sup>3</sup> ACHIEVE, Center of Applied Research, Amsterdam University of Applied Sciences, Faculty of Health, Amsterdam, The Netherlands

<sup>4</sup> Department of Intensive Care, University Medical Center Groningen, Groningen, The Netherlands

<sup>5</sup> Mahidol-Oxford Tropical Medicine Research Unit (MORU), Mahidol University, Bangkok, Thailand

<sup>6</sup> Nuffield Department of Medicine, University of Oxford, Oxford, United Kingdom

<sup>7</sup> Department of Critical Care Medicine, Australian and New Zealand Intensive Care Research Center (ANZIC-RC), Monash University, Melbourne, Australia

<sup>8</sup> Department of Anaesthesiology, Pain Management & Perioperative Medicine, Henry Ford Health System, Detroit, MI, United States of America

<sup>9</sup> Department of Intensive Care, Maxima Medical Center, Eindhoven, The Netherlands

<sup>10</sup> Critical Care Center, Sabadell Hospital, Sabadell, Spain

<sup>11</sup> Department of Intensive Care, Catharina Hospital, Eindhoven, The Netherlands

<sup>12</sup> Department of Intensive Care, Haga Hospital, the Hague, The Netherlands

<sup>13</sup> Department of Intensive Care, Maastricht University Medical Center, Maastricht, The Netherlands

<sup>14</sup> Department of Intensive Care, Spaarne Hospital, Haarlem, The Netherlands

<sup>15</sup> Department of Intensive Care, Reinier de Graaf Hospital, Delft, The Netherlands

<sup>16</sup> Department of Intensive Care, University Medical Center Utrecht, Utrecht, The Netherlands

**Abbreviations:** COVID-19, Coronavirus disease 2019; ICU, Intensive care unit; ARDS, Acute respiratory distress syndrome; PaO<sub>2</sub>, Arterial partial pressure of oxygen; FiO<sub>2</sub>, Fraction of inspired oxygen; SpO<sub>2</sub>, Pulse oximetry saturation; PEEP, Positive end-expiratory pressure; RT-PCR, Reverse transcription polymerase chain reaction; ROC, Receiver operator characteristics; AUC, Area under the curve; AUROC, Area under the receiver operator characteristics curve; ANOVA, Analysis of variance.

<sup>☆</sup> PRoVENT-COVID collaborators are presented on the next page.

\* Corresponding author at: Department of Intensive Care C3-334, Amsterdam University Medical Centers, Location 'AMC', Amsterdam, the Netherlands.

E-mail address: [j.p.roozeman@amsterdamumc.nl](mailto:j.p.roozeman@amsterdamumc.nl) (J.-P. Roozeman).

<sup>1</sup> PRactice of VENTilation in COVID-19.

<sup>17</sup> Department of Intensive Care, OLVG Hospital, location East, Amsterdam, The Netherlands<sup>18</sup> Department of Intensive Care, Sint Antonius Hospital, Nieuwegein, The Netherlands<sup>19</sup> Department of Intensive Care, Isala Hospital, Zwolle, The Netherlands<sup>20</sup> Department of Intensive Care, Zuyderland Hospital, Heerlen and Sittard, The Netherlands<sup>21</sup> Department of Intensive Care, ZGT Hospital, Almelo, The Netherlands<sup>22</sup> Department of Intensive Care, Medical Center Leeuwarden, Leeuwarden, The Netherlands<sup>23</sup> Department of Intensive Care, Maasstad Hospital, Rotterdam, The Netherlands<sup>24</sup> Department of Intensive Care, Amphia Hospital, Breda, The Netherlands<sup>25</sup> Department of Intensive Care, FlevoHospital, Almere, The Netherlands<sup>26</sup> Department of Intensive Care, Gelre Hospital, Apeldoorn and Zutphen, The Netherlands<sup>27</sup> Department of Intensive Care, Rijnstate Hospital, Arnhem, The Netherlands<sup>28</sup> Department of Intensive Care, Amsterdam University Medical Centers, location 'VU Medical Center', Amsterdam, The Netherlands<sup>29</sup> Department of Intensive Care, Dijklander Hospital, location Hoorn, Hoorn, The Netherlands<sup>30</sup> Department of Intensive Care, Haaglanden Medical Center, location Westeinde, the Hague, The Netherlands<sup>31</sup> Department of Intensive Care, Gelderse Vallei Hospital, Ede, The Netherlands<sup>a</sup> Department of Intensive Care, Amsterdam UMC, Location 'AMC', Amsterdam, the Netherlands<sup>b</sup> Department of Anesthesiology, Amsterdam UMC, Location 'AMC', Amsterdam, the Netherlands<sup>c</sup> Department of Anesthesiology, Hospital Universitario la Fe, Valencia, Spain<sup>d</sup> Perioperative Medicine Research Group, Instituto de Investigación Sanitaria Valencia, Spain<sup>e</sup> Department of Critical Care Medicine, Hospital Israelita Albert Einstein, São Paulo, Brazil<sup>f</sup> Mahidol-Oxford Research Unit (MORU), Faculty of Tropical Medicine, Mahidol University, Bangkok, Thailand<sup>g</sup> Anesthesia and Intensive Care Unit, Department of Emergency and Organ Transplantation, University of Bari Aldo Moro, Bari, Italy<sup>h</sup> Department of Anesthesiology and Intensive Care Medicine, Miulli Regional Hospital, Acquaviva delle Fonti, Italy

## ARTICLE INFO

Available online xxxx

## Keywords:

COVID-19

Acute respiratory distress syndrome

SpO<sub>2</sub>/FiO<sub>2</sub>

Pulse oximetry

Mechanical ventilation

Resource limited settings

## ABSTRACT

**Background:** The SpO<sub>2</sub>/FiO<sub>2</sub> is a useful oxygenation parameter with prognostic capacity in patients with ARDS. We investigated the prognostic capacity of SpO<sub>2</sub>/FiO<sub>2</sub> for mortality in patients with ARDS due to COVID-19.

**Methods:** This was a post-hoc analysis of a national multicenter cohort study in invasively ventilated patients with ARDS due to COVID-19. The primary endpoint was 28-day mortality.

**Results:** In 869 invasively ventilated patients, 28-day mortality was 30.1%. The SpO<sub>2</sub>/FiO<sub>2</sub> on day 1 had no prognostic value. The SpO<sub>2</sub>/FiO<sub>2</sub> on day 2 and day 3 had prognostic capacity for death, with the best cut-offs being 179 and 199, respectively. Both SpO<sub>2</sub>/FiO<sub>2</sub> on day 2 (OR, 0.66 [95%–CI 0.46–0.96]) and on day 3 (OR, 0.70 [95%–CI 0.51–0.96]) were associated with 28-day mortality in a model corrected for age, pH, lactate levels and kidney dysfunction (AUROC 0.78 [0.76–0.79]). The measured PaO<sub>2</sub>/FiO<sub>2</sub> and the PaO<sub>2</sub>/FiO<sub>2</sub> calculated from SpO<sub>2</sub>/FiO<sub>2</sub> were strongly correlated (Spearman's  $r = 0.79$ ).

**Conclusions:** In this cohort of patients with ARDS due to COVID-19, the SpO<sub>2</sub>/FiO<sub>2</sub> on day 2 and day 3 are independently associated with and have prognostic capacity for 28-day mortality. The SpO<sub>2</sub>/FiO<sub>2</sub> is a useful metric for risk stratification in invasively ventilated COVID-19 patients.

© 2021 The Authors. Published by Elsevier Inc. This is an open access article under the CC BY license (<http://creativecommons.org/licenses/by/4.0/>).

## 1. Introduction

Coronavirus disease 2019 (COVID-19) has rapidly spread across the globe, accounting for nearly 5 million deaths worldwide as of November 2021 [1]. While most patients with COVID-19 have only mild symptoms, a substantial number of patients require hospitalization, mostly for supplemental oxygen, and approximately one in every five hospitalized patients needs admission to an intensive care unit (ICU) for escalation of respiratory support, i.e. invasive ventilation [2].

Risk classification may help in projecting the trajectory of individual patients with acute respiratory distress syndrome (ARDS). Typically, the PaO<sub>2</sub>/FiO<sub>2</sub> is being used for mortality risk classification in these patients [3,4]. However, measuring the PaO<sub>2</sub> is not always possible or could be too costly to use in resource-limited settings. While in some middle-income countries arterial blood gas measurements are increasingly available, [5] access is far from universal in critical care facilities worldwide [6,7]. In a recent report on COVID-19 in African ICUs, in only 82% of the participating hospitals there was a possibility to perform blood gas analyses [8].

Findings in two recent studies suggest that SpO<sub>2</sub>/FiO<sub>2</sub> could replace PaO<sub>2</sub>/FiO<sub>2</sub> in predicting outcome [9,10]. Several factors, however, could dampen the predictive accuracy of SpO<sub>2</sub>/FiO<sub>2</sub> in patients with COVID-19, including a shift in the oxyhemoglobin dissociation curve due to hypercapnia, fever and metabolic disturbances, [11–13] all frequently present in patients with ARDS due to COVID-19. We performed a post-hoc

analysis of a large observational national multicenter study to test the hypothesis that SpO<sub>2</sub>/FiO<sub>2</sub> has prognostic capacity for outcome in critically ill invasively ventilated COVID-19 patients [14]. We also wished to explore the correlation between the SpO<sub>2</sub>/FiO<sub>2</sub> and the PaO<sub>2</sub>/FiO<sub>2</sub>.

## 2. Methods

## 2.1. Study design

The 'Practice of VENTilation in COVID-19' (PRoVENT-COVID) study was an investigator-initiated, national, multicenter, observational cohort study performed in 22 ICUs in the Netherlands [15]. The Institutional Review Board of the Amsterdam UMC (Location AMC), Amsterdam, The Netherlands (Chairperson Prof. Dr. J.A. Swinkels) approved the study protocol on April 7, 2020 (W20\_157 # 20.171), and need for individual patient informed consent was waived. The PRoVENT-COVID study was registered at [clinicaltrials.gov](http://clinicaltrials.gov) (on April 15, 2020 with study identifier NCT04346342). The statistical analysis plan of the current analysis was finalized and published [16]. Other study details have been reported before [14].

## 2.2. Patients

Consecutive patients aged 18 years or older were eligible, provided they were admitted to one of the participating ICUs and received

invasive ventilation for respiratory failure due to COVID-19, which was confirmed by RT-PCR for SARS-CoV-2. For the current analysis, we had the following exclusion criteria: (1) not fulfilling the criteria for ARDS, according to the current definition; [3] (2) treatment with extracorporeal membrane oxygenation in the first 4 calendar days of invasive ventilation; (3) transfer from or to a non-participating ICU within the first 2 days of invasive ventilation; and (4) an incomplete follow-up until day 28.

### 2.3. Data collection

Detailed information regarding demographic and medical history, disease severity and ARDS classification was collected at baseline. During the first 4 calendar days, ventilator settings, ventilation parameters, use of neuromuscular blocking agents, prone positioning, vital signs, and arterial lactate levels were recorded every 8 h at fixed time points. In the participating hospitals, ventilation variables were continuously recorded in the electronic medical records. SpO<sub>2</sub> monitoring, mandatory in invasively ventilated patients in the Netherlands, is performed continuously and without interruptions – these data are captured by the electronic medical records, with hourly validation by trained ICU nurses. Trained data collectors of the PROVENT-COVID study extracted these validated data at the time-points of interest. Follow-up was 90 days for the timing of extubation, ICU- and hospital discharge, and mortality.

The first and second calendar day that a patient received invasive ventilation were merged and named 'day 1'—therefore, in theory this day could last from 24 h to 47 h and 59 min. The next two calendar days were named 'day 2' and 'day 3'. In order to minimize the variable effects of prone positioning on the SpO<sub>2</sub>/FiO<sub>2</sub>, the lowest SpO<sub>2</sub>/FiO<sub>2</sub> on day 1, 2, and 3 with the corresponding PaO<sub>2</sub>/FiO<sub>2</sub> were used to determine its prognostic capacity. The SpO<sub>2</sub>/FiO<sub>2</sub> in the first hour after the start of invasive ventilation was ignored, since endotracheal intubation and associated hemodynamic instability are likely to influence both SpO<sub>2</sub> and PaO<sub>2</sub>, and because FiO<sub>2</sub> is usually not yet adjusted within the first hour.

### 2.4. Endpoints

The primary endpoint of this analysis was 28-day mortality.

### 2.5. Statistical analysis

The sample size was based on the number of available patients. Data are expressed as mean ± standard deviation (SD), median with interquartile range (IQR) or number with percentage, where appropriate. Differences in baseline characteristics between survivors and non-survivors were analyzed using the Pearson Chi-squared or Fisher exact tests for categorical variables and with a one-way ANOVA or Kruskal-Wallis test for continuous variables.

To determine at which day SpO<sub>2</sub>/FiO<sub>2</sub> had the best prognostic capacity for 28-day mortality, we conducted a joint analysis of variance (ANOVA), and a general linear F-test was performed by fitting a logistic multivariable model with SpO<sub>2</sub>/FiO<sub>2</sub> on days 1, 2 and 3 as covariates. Subsequently, the difference in sum of squared errors (partial sum of squares) and the results from the F-test were used to identify which time points had prognostic value [17].

The accuracy of predicting 28-day mortality was analyzed by constructing receiver operator characteristics (ROC) curves. The area under the ROC (AUROC) was calculated and the optimal cut-off value for prediction of 28-day mortality was determined. An AUROC of ≥0.90 was considered excellent, 0.80 to 0.89 was considered good, 0.70 to 0.79 was considered fair, 0.60 to 0.69 was considered poor, and <0.60 was considered a fail [18]. The optimal cut-off point was determined using the Youden index, and differences between ROC curves were tested using a De Long test [19].

A multivariable logistic regression model was used to analyze the prognostic capacity of SpO<sub>2</sub>/FiO<sub>2</sub> for 28-day mortality, while taking into consideration other major confounders. The model was fitted using statistically relevant SpO<sub>2</sub>/FiO<sub>2</sub> values and the following predefined variables: age, PEEP, duration of prone positioning, arterial lactate level, arterial pH, vasopressor use and the presence of kidney dysfunction at admission. PEEP was treated both as a linear and non-linear term, in order to capture a potential threshold effect at varying levels of applied pressure. The variable inflation factor (VIF) was used to test for collinearity between covariates entered in the model, where VIF > 5 suggests moderate collinearity and VIF > 10 great collinearity [20]. A calibration analysis was used to assess the accuracy of the ROC and model overfitting.

Typically, in invasively ventilated COVID-19 patients, the SpO<sub>2</sub>/FiO<sub>2</sub> is approximately 175 (e.g., in a patient ventilated with a FiO<sub>2</sub> of 0.5 to 0.6, with a SpO<sub>2</sub> of 90%, the SpO<sub>2</sub>/FiO<sub>2</sub> is between 150 and 180), but values near to 100 are easily reached in patients with severe oxygenation problems. To be able to compare SpO<sub>2</sub>/FiO<sub>2</sub> and PaO<sub>2</sub>/FiO<sub>2</sub>, we calculated PaO<sub>2</sub> from SpO<sub>2</sub> using the non-linear formula by Severinghaus-Ellis [21] and the lowest SpO<sub>2</sub> on day 1. Then, the correlation between SpO<sub>2</sub>/FiO<sub>2</sub> and PaO<sub>2</sub>/FiO<sub>2</sub> was determined by comparing the calculated PaO<sub>2</sub>/FiO<sub>2</sub> to the measured PaO<sub>2</sub>/FiO<sub>2</sub> using a two-way scatterplot and Spearman correlation analysis. Accuracy was assessed using Bland-Altman plots and a Deming regression [22]. SpO<sub>2</sub> values of ≥98% were excluded from this analysis.

Two post-hoc analyses were conducted. One sensitivity analysis of the multivariable model was performed, adding the respiratory system driving pressure as a covariate. Additionally, one analysis using ROC curves was performed to test whether PaO<sub>2</sub>/FiO<sub>2</sub> measurements collected at the same time-points as SpO<sub>2</sub>/FiO<sub>2</sub> would yield similar findings.

All analyses were performed in R (version 4.0.3), in the R studio environment ([www.rstudio.com](http://www.rstudio.com)). A P value of <0.05 was considered statistically significant.

## 3. Results

### 3.1. Patients

A total of 1122 patients from 22 ICU's participated in the PROVENT-COVID study, out of which 869 were included in the current analysis. Main reasons for exclusion were death or transfer to a non-participating hospital within the first 2 calendar days of invasive ventilation and failing to meet the current definition for ARDS (eFig. 1). The majority of patients were male, overweight and had moderate ARDS (Table 1). Mortality at day 28 and at day 90 was 30.1% and 55.6%. Patients that survived beyond day 28 were younger, had lower disease severity scores and higher baseline pH. While ARDS severity was not different between survivors and non-survivors, survivors had higher PaO<sub>2</sub>/FiO<sub>2</sub> and SpO<sub>2</sub>/FiO<sub>2</sub> at baseline and during successive days (eTable 1).

### 3.2. Identification of the best day for prognostication using SpO<sub>2</sub>/FiO<sub>2</sub>

The SpO<sub>2</sub>/FiO<sub>2</sub> on day 1 had no prognostic value for 28-day mortality ( $p = 0.721$ ). The SpO<sub>2</sub>/FiO<sub>2</sub> on day 2 and day 3, however, did have significant associations with outcome ( $p < 0.001$  for both days; Fig. 1). The AUROC for SpO<sub>2</sub>/FiO<sub>2</sub> on day 2 and day 3 were comparable.

### 3.3. Best SpO<sub>2</sub>/FiO<sub>2</sub> cutoffs

The best cut-off for SpO<sub>2</sub>/FiO<sub>2</sub> for 28-day mortality was 179 on day 2, and 199 on day 3. The SpO<sub>2</sub>/FiO<sub>2</sub> on day 2 was more specific but less sensitive than SpO<sub>2</sub>/FiO<sub>2</sub> on day 3, and was associated with a higher positive predictive value but a lower negative predictive value (eTable 2).

**Table 1**  
Characteristics of invasively ventilated patients with COVID-19 ARDS.

	Survivors (n = 607)	Non-survivors (n = 262)	P-value
Age (Years)	63 [56, 70]	70 [65, 74]	<0.001
Male (%)	70.7	76.3	0.103
Weight (kg)	85.0 [78.0, 97.0]	82.5 [75.0, 95.0]	0.030
BMI (kg/m <sup>2</sup> )	27.7 [25.2, 30.8]	27.4 [25.0, 29.6]	0.188
Affected quadrants on chest X-ray (%)			0.459
1	7.8	5.2	
2	23.1	18.5	
3	27.4	28.9	
4	41.7	47.4	
APACHE II score	15 [12,20]	20 [15, 23]	<0.001
APACHE IV score	54 [45, 66]	65 [50, 81]	<0.001
Tidal volume (ml/kg PBW)	5.7 [5.2, 6.2]	6.0 [5.4, 6.4]	0.002
Respiratory rate (breaths/min)	22 [20,25]	24 [20,26]	0.012
Respiratory system compliance (ml/cmH <sub>2</sub> O)	31 [25, 39]	32 [25, 37]	0.638
Driving pressure	13.0	13.5	
	[10.5–15.5]	[11.0–17.0]	0.031
Duration of prone positioning (h)	41.0	12.0 [0.0, 39.6]	0.798
	7.30 [7.24, 7.35]	7.24 [7.18, 7.30]	
pH	7.35]	7.30]	<0.001
Vasopressor use (%) <sup>a</sup>	92.1	96.2	0.039
Arterial Lactate (mmol/L)	1.5 [1.2, 2.0]	1.9 [1.5, 2.5]	<0.001
Kidney dysfunction (%) <sup>b</sup>	235 (39.0)	174 (66.4)	<0.001
PaO <sub>2</sub> /FiO <sub>2</sub>	124 (45)	120 (44)	0.291
SpO <sub>2</sub> /FiO <sub>2</sub>	153 (48)	143 (42)	0.003
	0.60 [0.50, 0.80]	0.70 [0.55, 0.80]	
FiO <sub>2</sub>	0.80]	0.80]	0.007
PEEP	12 [10, 15]	12 [10, 15]	0.248
Berlin ARDS category (%)			0.482
Mild	42 (6.9)	13 (5.0)	
Moderate	376 (61.9)	161 (61.5)	
Severe	189 (31.1)	88 (33.6)	
	11.5		
Ventilator-free-days and alive at day 28	[0.0–18.0]	0.0 [0.0–0.0]	<0.001

Categorical variables: number (percentage); continuous variables: median [25–75 percentile] or mean (SD). Abbreviations: BMI, Body Mass Index; APACHE, Acute Physiology and Chronic Evaluation; PBW, predicted body weight; ARDS, Acute Respiratory Distress Syndrome.

<sup>a</sup> During the first 72 h after ICU admission.

<sup>b</sup> Serum creatinine concentration of >155 umol/l.

### 3.4. The multivariable model

In the multivariable regression analysis, SpO<sub>2</sub>/FiO<sub>2</sub> on day 2 and on day 3 had a comparably strong association with 28-day mortality, where an improvement in SpO<sub>2</sub>/FiO<sub>2</sub> was associated with an increase in survival. Higher age, lactate levels, a lower pH, and the presence of kidney dysfunction at ICU admission were significant confounders associated with a higher mortality (eFig. 2 and Table 2). The discriminating capacity of the multivariable model for 28-day mortality was fair (AUROC = 0.78 [0.76–0.79]), and the calibration was adequate (eFig. 3). No large effect of collinearity was observed in the model for SpO<sub>2</sub>/FiO<sub>2</sub> on day 2 and 3: VIF was 1.77 for SpO<sub>2</sub>/FiO<sub>2</sub> at day 2, and VIF was 1.64 for SpO<sub>2</sub>/FiO<sub>2</sub> at day 3. In a sensitivity analysis including respiratory system driving pressure in the multivariable model, driving pressure was not associated with 28-day mortality (OR 1.13 [0.89–1.42], p = 0.32), whereas SpO<sub>2</sub>/FiO<sub>2</sub> on day 3, but not on day 2 remained associated with outcome (eTable 3).

### 3.5. Correlation of SpO<sub>2</sub>/FiO<sub>2</sub> with PaO<sub>2</sub>/FiO<sub>2</sub>

The correlation between observed and calculated PaO<sub>2</sub>/FiO<sub>2</sub> was strong (Fig. 2). The Deming regression showed both fixed and proportional bias from the calculated values, with decreasing accuracy at higher oxygenation levels. The estimated PaO<sub>2</sub>/FiO<sub>2</sub> was moderately but systematically lower than the measured PaO<sub>2</sub>/FiO<sub>2</sub> (eFig. 4).

### 3.6. Post-hoc analysis of the prognostic value of PaO<sub>2</sub>/FiO<sub>2</sub>

PaO<sub>2</sub>/FiO<sub>2</sub> had a comparable prognostic value during the first days of invasive ventilation; alike SpO<sub>2</sub>/FiO<sub>2</sub> on day 1, PaO<sub>2</sub>/FiO<sub>2</sub> on day 1 had no prognostic value for 28-day mortality (eFig. 5).

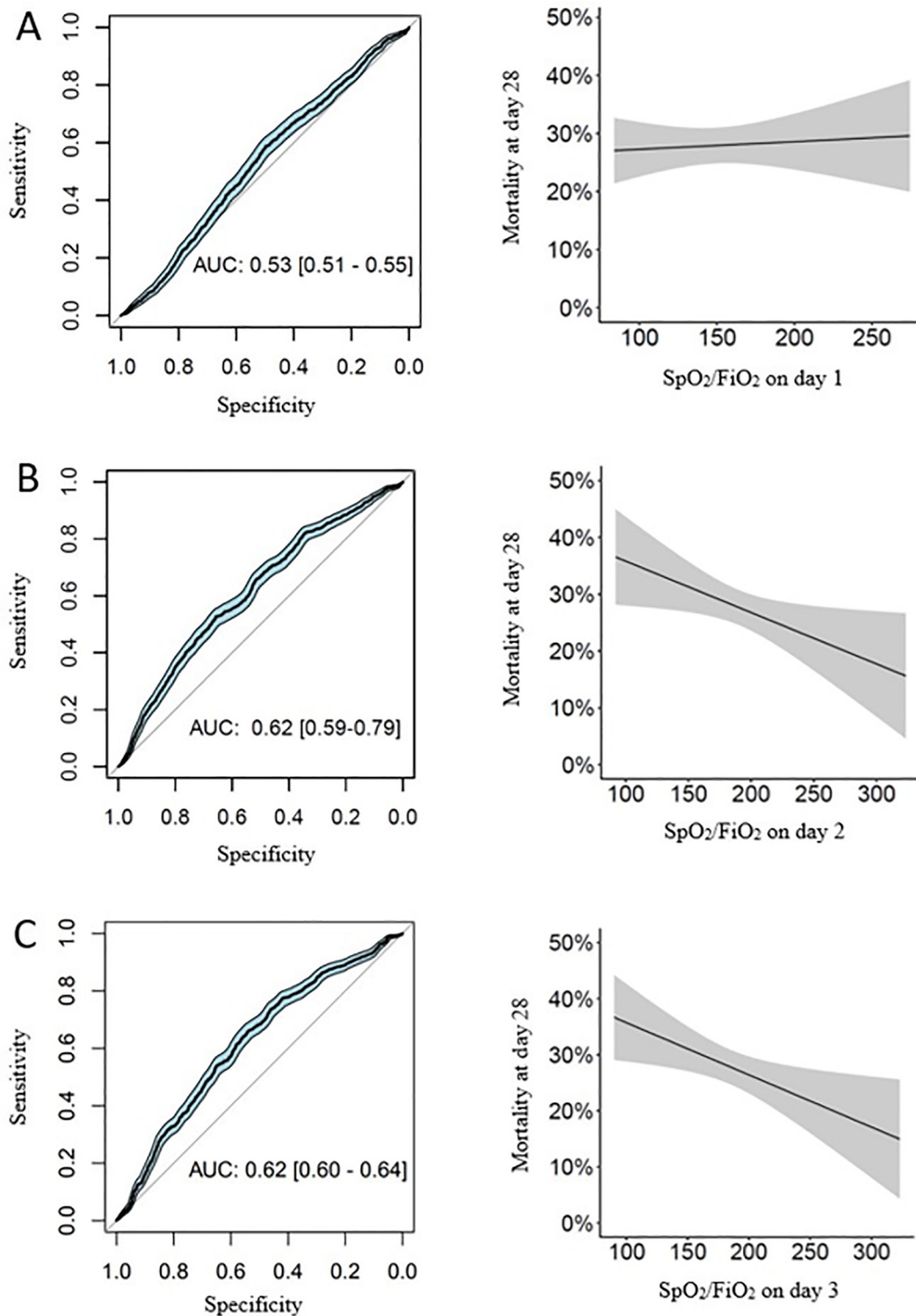
## 4. Discussion

This study investigated the prognostic capacity of SpO<sub>2</sub>/FiO<sub>2</sub> for mortality in critically ill invasively ventilated patients with ARDS due to COVID-19. SpO<sub>2</sub>/FiO<sub>2</sub> had a significant association with 28-day mortality, where SpO<sub>2</sub>/FiO<sub>2</sub> on day 2 and 3 had prognostic capacity for death. The SpO<sub>2</sub>/FiO<sub>2</sub> correlated well with the PaO<sub>2</sub>/FiO<sub>2</sub>, even though the estimated PaO<sub>2</sub>/FiO<sub>2</sub> was moderately but systematically lower than the measured PaO<sub>2</sub>/FiO<sub>2</sub>.

Our study has several strengths. The analysis included a large cohort of patients from 22 ICUs in the Netherlands, which were located in university hospitals, teaching hospitals and non-teaching hospitals, increasing the validity of the findings. Also, in contrast to previous studies in patients with ARDS, [4,10] this analysis was not limited to arbitrarily defined severity groups. The longitudinal evaluation of outcome prediction across the first 4 calendar days provides information about the early changes that may occur after the initiation of invasive ventilation, and allows pinpointing the most accurate moment to assess patient outcome using this cheap and easily obtainable oxygenation metric.

SpO<sub>2</sub>/FiO<sub>2</sub> on days 2 and 3 was associated with mortality, while SpO<sub>2</sub>/FiO<sub>2</sub> on day 1 had no association with outcome. This is in line with previous findings in patients with ARDS, where reassessment of disease severity and oxygenation after 24 h of invasive ventilation led to improved outcome prediction [10,23,24]. A study in invasively ventilated COVID-19 patients from Spain showed a clear shift in ARDS severity from day 1 to day 2, which remained constant thereafter up to day 28 [25]. This evolution in ARDS severity during the first days has also been reported in a study in a large cohort of patients with ARDS not due to COVID-19 [26]. Additionally, a large recent study in COVID-19 patients did not show an association of oxygenation metrics early after arrival in the ICU with outcome [27]. These findings suggests that re-evaluating patients after 24 h of standard care gives a more accurate picture of ARDS severity, and thus outcome. Recent studies, however, did report significant associations of oxygenation metrics at the beginning of ICU admission with outcomes. One study of a large cohort of COVID-19 patients in three European countries found that non-survivors had significantly lower PaO<sub>2</sub>/FiO<sub>2</sub> values during the first 24 h of ICU admission [28]. However, a significant proportion of patients were not under invasive ventilation at that time. Furthermore, although an association was found between PaO<sub>2</sub>/FiO<sub>2</sub> on the first day and outcome, that study did not evaluate the effect of PaO<sub>2</sub>/FiO<sub>2</sub> during consecutive days. Another study analyzed the association of PaO<sub>2</sub>/FiO<sub>2</sub> with the number of ventilator-free days and alive at day 28 (VFD-28) in invasively ventilated patients with moderate to severe ARDS due to COVID-19 [29]. In their multivariable model PaO<sub>2</sub>/FiO<sub>2</sub> was associated with VFD-28, however, the precise timing of the PaO<sub>2</sub>/FiO<sub>2</sub> was unclear.

SpO<sub>2</sub>/FiO<sub>2</sub> has previously been successfully implemented for predicting mortality and classifying ARDS severity in patients with non-COVID-19 ARDS [9,30]. A few studies have recently evaluated its use in COVID-19, where acid-base disorders and fever might influence prognostic accuracy. A recent analysis in a mixed cohort of ventilated and non-ventilated patients evaluated the use of changes in SpO<sub>2</sub>/FiO<sub>2</sub> for prognostication in patients with COVID-19, where a decrease in SpO<sub>2</sub>/FiO<sub>2</sub> in the first three days was associated with a poor outcome [31]. However, this study did not report on arterial blood gas and ventilation data, and 28-day mortality was 94.7% in patients receiving respiratory support, which is substantially higher than other reports on outcome [2,14]. Another retrospective analysis evaluated SpO<sub>2</sub>/FiO<sub>2</sub> for the prediction of mortality and the occurrence of



**Fig. 1.** Predictive capacity of SpO<sub>2</sub>/FiO<sub>2</sub> during the first three days of invasive ventilation. Panel A: SpO<sub>2</sub>/FiO<sub>2</sub> on day 1, Panel B: SpO<sub>2</sub>/FiO<sub>2</sub> on day 2, Panel C: SpO<sub>2</sub>/FiO<sub>2</sub> on day 3. Legend: AUC, area under the curve.

ARDS, and found a similar cutoff value of 179 as this current study [32]. However, the sample size was limited, arterial blood gas analysis was frequently unavailable, and FiO<sub>2</sub> could not be accurately measured in patients with non-invasive oxygen delivery methods. Additionally, a recent study successfully used SpO<sub>2</sub>/FiO<sub>2</sub> as a part of a machine learning model for early prediction of mortality and the need for mechanical ventilation in hospitalized patients with

COVID-19 [33]. In contrast to these studies, this current analysis focused on a well-defined large cohort of invasively ventilated patients, evaluated SpO<sub>2</sub>/FiO<sub>2</sub> across multiple days and included several arterial blood gas and ventilator support variables as confounders in the prediction model. Therefore, this study adds to the current understanding of the prognostic capacity of SpO<sub>2</sub>/FiO<sub>2</sub> in mechanically ventilated patients with COVID-19 in the ICU.

**Table 2**  
Results from the multivariable logistic model predicting 28-day mortality.

Variable	Odds ratio	Standard error	Lower 95% CI	Upper 95% CI	P-value
SpO <sub>2</sub> /FiO <sub>2</sub> on day 2	0.66	0.19	0.46	0.96	0.027
SpO <sub>2</sub> /FiO <sub>2</sub> on day 3	0.70	0.16	0.51	0.96	0.017
PEEP	1.25	0.14	0.95	1.64	0.235
PEEP (non-linear term)	1.18	0.08	1.01	1.38	0.032
Duration of prone positioning	0.85	0.14	0.61	1.17	0.343
Age	3.21	0.16	2.34	4.40	<0.001
pH	0.72	0.15	0.54	0.96	0.027
Lactate	1.13	0.06	1.01	1.28	0.038
Vasopressor use (yes)	1.25	0.46	0.50	3.01	0.625
Acute Kidney Injury (yes)	2.45	0.20	1.65	3.63	<0.001

Output from the multivariable logistic model using clinically relevant confounders. 28-day mortality as the dependent variable, other variables tested as independent variables.

The addition of several major confounders related to 28-day mortality improved the prediction capacity, while maintaining the significance of the SpO<sub>2</sub>/FiO<sub>2</sub> as an individual prediction marker. The accuracy of this prediction model was fair, and it could provide a good basis for prognostication after the first day of invasive ventilation, although the evaluation of pH and arterial lactate levels may not be feasible in settings with limited resources [7,8].

PaO<sub>2</sub>/FiO<sub>2</sub> can be accurately calculated from SpO<sub>2</sub>/FiO<sub>2</sub> using the Severinghaus–Ellis equation, but there is a fixed bias across all oxygenation levels, and an increasing proportional bias at higher oxygenation levels. This is in line with previous findings in ARDS not related to COVID–19 [9,10,34,35]. Poor detection of hyperoxemia is a known pitfall of pulse oximetry saturation, caused by the flattening of the oxyhemoglobin dissociation curve [10,34,35]. Several equations have been used to calculate PaO<sub>2</sub>/FiO<sub>2</sub> from SpO<sub>2</sub>/FiO<sub>2</sub>, but a validated method is yet lacking that would provide an accurate assessment at all oxygenation levels [21,34–37]. It could be that our findings might have been different if we would have used alternative equations.

Our study has several limitations. Due to the observational nature of the study, selection and performance bias cannot be excluded as confounding factors in the inclusion of participating of ICUs, as well as in the application of lung protective ventilation measures and adjunctive treatments for refractory hypoxemia. We thus used the lowest SpO<sub>2</sub>/FiO<sub>2</sub> of the first days of ventilation, to mitigate the variable effect of prone positioning, recruitment, and other treatments of refractory hypoxemia on the SpO<sub>2</sub>/FiO<sub>2</sub>. Although we believe this to be the most

accurate depiction of the degree of respiratory failure, we cannot exclude added bias due to this selection. Furthermore, during the pandemic, shortcomings of pulse oximetry have been emphasized especially in patients with a darker skin tone, where under detection of hypoxemia occurs more frequently than in white patients [38–41]. Unfortunately, our database had no data available on patient skin color, impeding any assessment on the effect of skin color on SpO<sub>2</sub>/FiO<sub>2</sub> accuracy in our cohort. Lastly, our study was performed in high-resource settings in the Netherlands, where blood gas analysis and PaO<sub>2</sub>/FiO<sub>2</sub> measurements were exclusively available. As shown in previous studies in non-COVID ARDS, prognostic capacity of PaO<sub>2</sub>/FiO<sub>2</sub> improves in successive days after initiation of invasive ventilation [23–25]. External validation of our findings in low-resource settings is warranted, and we are planning such a study using Asian and African ICU registries.

### 5. Conclusion

In this large cohort of invasively ventilated patients with ARDS due to COVID–19, SpO<sub>2</sub>/FiO<sub>2</sub> on day 2 or 3, but not on day 1, had an independently association with 28-day mortality. The prognostic capacity of SpO<sub>2</sub>/FiO<sub>2</sub> alone was poor, while the multivariable model had a fair predictive capacity. A strong correlation between PaO<sub>2</sub>/FiO<sub>2</sub> calculated from SpO<sub>2</sub>/FiO<sub>2</sub> and measured PaO<sub>2</sub>/FiO<sub>2</sub> was observed, however, calculated PaO<sub>2</sub>/FiO<sub>2</sub> values generally underestimated arterial oxygenation. These findings support the use of SpO<sub>2</sub>/FiO<sub>2</sub> as an attractive alternative to PaO<sub>2</sub>/FiO<sub>2</sub>, especially in resource-limited settings.

### Funding

This research did not receive any specific grant from funding agencies in the public, commercial, or not-for-profit sectors.

### Declaration of Competing Interest

None.

### Acknowledgements

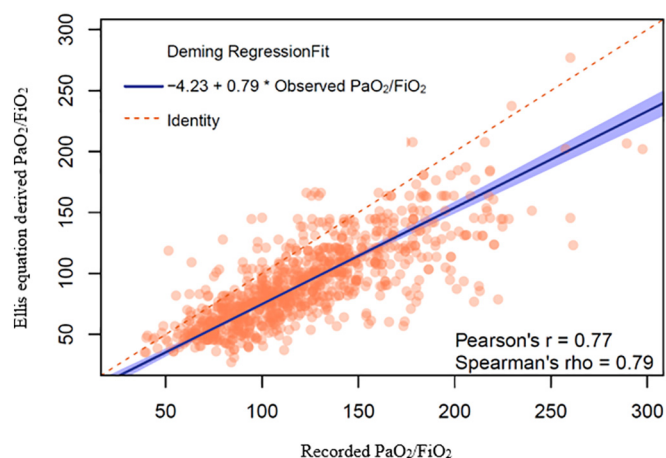
None.

### Appendix A. Supplementary data

Supplementary data to this article can be found online at <https://doi.org/10.1016/j.jccr.2021.11.009>.

### References

- [1] WHO. Coronavirus (COVID-19) Dashboard. <https://covid19.who.int/>; 2021. accessed 1 November 2021.
- [2] Serafim RB, Povoia P, Souza-Dantas V, Kalil AC, Salluh JF. Clinical course and outcomes of critically ill patients with COVID-19 infection: a systematic review. *Clin Microbiol Infect.* 2020;27(1):P47–54.
- [3] Ranieri VM, Rubenfeld GD, Thompson BT, Ferguson ND, Caldwell E, Fan E, et al. Acute respiratory distress syndrome: the Berlin definition. *JAMA.* 2012;307(23):2526–33.
- [4] Villar J, Fernandez RL, Ambros A, Parra L, Blanco J, Dominguez-Berrot AM, et al. A clinical classification of the acute respiratory distress syndrome for predicting outcome and guiding medical therapy\*. *Crit Care Med.* 2015;43(2):346–53.
- [5] Adhikari NKJ, Arali R, Attanayake U, Balasundaram S, Beane A, Chakravarthy V, et al. Implementing an intensive care registry in India: preliminary results of the case-mix program and an opportunity for quality improvement and research. *Wellcome Open Res.* 2020;5:182.
- [6] Pisani L, Algera AG, Serpa Neto A, Ahsan A, Beane A, Chittawatanarat K, et al. Epidemiological characteristics, ventilator management, and clinical outcome in patients receiving invasive ventilation in intensive care units from 10 Asian middle-income countries (PROVENT-iMiC): an international, multicenter, prospective study. *Am J Trop Med Hyg.* 2021;104(3):1022–33.
- [7] Hashmi M, Taqi A, Memon MI, Ali SM, Khaskheli S, Shehryar M, et al. A national survey of critical care services in hospitals accredited for training in a lower-middle income country: Pakistan. *J Crit Care.* 2020;60:273–8.



**Fig. 2.** The relationship between observed and calculated PaO<sub>2</sub>/FiO<sub>2</sub> values using a Deming regression. Legend: The dashed line depicts the ideal accuracy line; the solid line shows the Deming regression estimation.

- [8] Biccard BM, Gopalan PD, Miller M, Michell WL, Thomson D, Ademuyiwa A, et al. Patient care and clinical outcomes for patients with COVID-19 infection admitted to African high-care or intensive care units (ACCCOS): a multicentre, prospective, observational cohort study. *Lancet*. 2021;397(10288):1885–94.
- [9] Chen W, Janz DR, Shaver CM, Bernard GR, Bastarache JA, Ware LB. Clinical characteristics and outcomes are similar in ARDS diagnosed by oxygen saturation/FiO<sub>2</sub> ratio compared with Pao<sub>2</sub>/FiO<sub>2</sub> ratio. *Chest*. 2015;148(6):1477–83.
- [10] Pisani L, Roozeman JP, Simonis FD, Giangregorio A, van der Hoeven SM, Schouten LR, et al. Risk stratification using SpO<sub>2</sub>/FiO<sub>2</sub> and PEEP at initial ARDS diagnosis and after 24 h in patients with moderate or severe ARDS. *Ann Intensive Care*. 2017;7(1):108.
- [11] Sjöström A, Rysz S, Sjöström H, Höybye C. Electrolyte and acid-base imbalance in severe COVID-19. *Endocr Connect*. 2021;10(7):805–14.
- [12] Alfano G, Fontana F, Mori G, Giaroni F, Ferrari A, Giovannella S, et al. Acid base disorders in patients with COVID-19. *Int Urol Nephrol*. 2021:1–6.
- [13] Guan WJ, Ni ZY, Hu Y, Liang WH, Ou CQ, He JX, et al. Clinical characteristics of coronavirus disease 2019 in China. *N Engl J Med*. 2020;382(18):1708–20.
- [14] Botta M, Tsonas AM, Pillay J, Boers LS, Algera AG, Bos LDJ, et al. Ventilation management and clinical outcomes in invasively ventilated patients with COVID-19 (PROVENT-COVID): a national, multicentre, observational cohort study. *Lancet Respir Med*. 2020 epub ahead of print.
- [15] Boers NS, Botta M, Tsonas AM, Algera AG, Pillay J, Dongelmans DA, et al. PRactice of VENTilation in patients with novel coronavirus disease (PROVENT-COVID): rationale and protocol for a national multicenter observational study in the Netherlands. *Ann Transl Med*. 2020;8(19):1251.
- [16] Roozeman J-P, Mazzinari G, Serpa Neto A, Hollmann MW, Paulus F, Schultz MJ, et al. Risk stratification using SpO<sub>2</sub>/FiO<sub>2</sub> in invasively ventilated patients with COVID-19 ARDS - preliminary statistical analysis plan. <https://sites.google.com/view/provent-covid/prognostication-in-covid-19-ards-sap?authuser=0>; 2021.
- [17] Harrell F. Regression modelling strategies. 2nd ed.. Springer; 2015.
- [18] Safari S, Baratloo A, Elfil M, Negida A. Evidence based emergency medicine; part 5 receiver operating curve and area under the curve. *Emerg (Tehran)*. 2016;4(2):111–3.
- [19] DeLong ER, DeLong DM, Clarke-Pearson DL. Comparing the areas under two or more correlated receiver operating characteristic curves: a nonparametric approach. *Biometrics*. 1988;44(3):837–45.
- [20] Harrell F. Regression modelling strategies with applications to linear, logistic and ordinal regression and survival analysis. Springer; 2015.
- [21] Ellis R. Determination of PO<sub>2</sub> from saturation. *J Appl Physiol*. 1989;67:902.
- [22] Cornbleet PJ, Gochman N. Incorrect least-squares regression coefficients in method-comparison analysis. *Clin Chem*. 1979;25(3):432–8.
- [23] Villar J, Blanco J, del Campo R, Andaluz-Ojeda D, Diaz-Dominguez FJ, Muriel A, et al. Assessment of PaO<sub>2</sub>(2)/FiO<sub>2</sub>(2) for stratification of patients with moderate and severe acute respiratory distress syndrome. *BMJ Open*. 2015;5(3):e006812.
- [24] Huber W, Findelsen M, Lahmer T, Hermer A, Rasch S, Mayr U, et al. Prediction of outcome in patients with ARDS: a prospective cohort study comparing ARDS definitions and other ARDS-associated parameters, ratios and scores at intubation and over time. *PLoS One*. 2020;15(5):e0232720.
- [25] Ferrando C, Suarez-Sipmann F, Mellado-Artigas R, Hernández M, Gea A, Arruti E, et al. Clinical features, ventilatory management, and outcome of ARDS caused by COVID-19 are similar to other causes of ARDS. *Intensive Care Med*. 2020;46(12):2200–11.
- [26] Madotto F, Pham T, Bellani G, Bos LD, Simonis FD, Fan E, et al. Resolved versus confirmed ARDS after 24 h: insights from the LUNG SAFE study. *Intensive Care Med*. 2018;44(5):564–77.
- [27] Grasselli G, Tonetti T, Protti A, Langer T, Girardis M, Bellani G, et al. Pathophysiology of COVID-19-associated acute respiratory distress syndrome: a multicentre prospective observational study. *Lancet Respir Med*. 2020;8(12):1201–8.
- [28] COVID-ICU Group. Clinical characteristics and day-90 outcomes of 4244 critically ill adults with COVID-19: a prospective cohort study. *Intensive Care Med*. 2021;47(1):60–73.
- [29] Grimaldi D, Aissaoui N, Blonz G, Carbutti G, Courcelle R, Gaudry S, et al. Characteristics and outcomes of acute respiratory distress syndrome related to COVID-19 in Belgian and French intensive care units according to antiviral strategies: the COVADIS multicentre observational study. *Ann Intensive Care*. 2020;10(1):131.
- [30] Festic E, Bansal V, Kor DJ, Gajic O, Illness USC. Injury trials group: lung injury prevention study I. SpO<sub>2</sub>/FiO<sub>2</sub> ratio on hospital admission is an indicator of early acute respiratory distress syndrome development among patients at risk. *J Intensive Care Med*. 2015;30(4):209–16.
- [31] Lu X, Jiang L, Chen T, Wang Y, Zhang B, Hong Y, et al. Continuously available ratio of SpO<sub>2</sub>/FiO<sub>2</sub> serves as a noninvasive prognostic marker for intensive care patients with COVID-19. *Respir Res*. 2020;21(1):194.
- [32] Choi K-J, Hong H-L, Kim EJ. The association between mortality and the oxygen saturation and fraction of inhaled oxygen in patients requiring oxygen therapy due to COVID-19-associated pneumonia. *Tuberc Respir Dis (Seoul)*. 2021;84(2):125–33.
- [33] Marcos M, Belhassen-García M, Sánchez-Puente A, Sampedro-Gomez J, Azibeiro R, Dorado-Díaz PI, et al. Development of a severity of disease score and classification model by machine learning for hospitalized COVID-19 patients. *PLoS One*. 2021;16(4):e0240200.
- [34] Rice TW, Wheeler AP, Bernard GR, Hayden DL, Schoenfeld DA, Ware LB, et al. Comparison of the SpO<sub>2</sub>/FiO<sub>2</sub> ratio and the PaO<sub>2</sub>/FiO<sub>2</sub> ratio in patients with acute lung injury or ARDS. *Chest*. 2007;132(2):410–7.
- [35] Pandharipande PP, Shintani AK, Hagerman HE, St Jacques PJ, Rice TW, Sanders NW, et al. Derivation and validation of Spo<sub>2</sub>/Fio<sub>2</sub> ratio to impute for Pao<sub>2</sub>/Fio<sub>2</sub> ratio in the respiratory component of the sequential organ failure assessment score. *Crit Care Med*. 2009;37(4):1317–21.
- [36] Brown SM, Grissom CK, Moss M, Rice TW, Schoenfeld D, Hou PC, et al. Nonlinear imputation of Pao<sub>2</sub>/Fio<sub>2</sub> from Spo<sub>2</sub>/Fio<sub>2</sub> among patients with acute respiratory distress syndrome. *Chest*. 2016;150(2):307–13.
- [37] Gadrey SM, Lau CE, Clay R, Rhodes GT, Lake DE, Moore CC, et al. Imputation of partial pressures of arterial oxygen using oximetry and its impact on sepsis diagnosis. *Physiol Meas*. 2019;40(11):115008.
- [38] Hidalgo DC, Olusanya O, Harlan E. Critical care trainees call for pulse oximetry reform. *Lancet. Respir Med*. 2021;9(4):E37.
- [39] Whitehead-Clarke T. More on racial bias in pulse oximetry measurement. *N Engl J Med*. 2021;384(13):1278.
- [40] Sjoding MW, Dickson RP, Iwashyna TJ, Gay SE, Valley TS. Racial bias in pulse oximetry measurement. *N Engl J Med*. 2020;383(25):2477–8.
- [41] Feiner JR, Severinghaus JW, Bickler PE. Dark skin decreases the accuracy of pulse oximeters at low oxygen saturation: the effects of oximeter probe type and gender. *Anesth Analg*. 2007;105(6 Suppl):S18–23 [tables of contents].