

University of Groningen

Hippocampal Sclerosis in Frontotemporal Dementia

Sieben, Anne; Van Langenhove, Tim; Vermeiren, Yannick; Gossye, Helena; Praet, Marleen; Vanhauwaert, Dimitri; Cousaert, Celine; Engelborghs, Sebastiaan; Raedt, Robrecht; Boon, Paul

Published in:
Journal of neuropathology and experimental neurology

DOI:
[10.1093/jnen/nlab010](https://doi.org/10.1093/jnen/nlab010)

IMPORTANT NOTE: You are advised to consult the publisher's version (publisher's PDF) if you wish to cite from it. Please check the document version below.

Document Version
Publisher's PDF, also known as Version of record

Publication date:
2021

[Link to publication in University of Groningen/UMCG research database](#)

Citation for published version (APA):

Sieben, A., Van Langenhove, T., Vermeiren, Y., Gossye, H., Praet, M., Vanhauwaert, D., Cousaert, C., Engelborghs, S., Raedt, R., Boon, P., Santens, P., De Deyn, P. P., Bracke, K. R., De Meulemeester, K., Van Broeckhoven, C., Martin, J.-J., & Bjerke, M. (2021). Hippocampal Sclerosis in Frontotemporal Dementia: When Vascular Pathology Meets Neurodegeneration. *Journal of neuropathology and experimental neurology*, *80*(4), 313-324. <https://doi.org/10.1093/jnen/nlab010>

Copyright

Other than for strictly personal use, it is not permitted to download or to forward/distribute the text or part of it without the consent of the author(s) and/or copyright holder(s), unless the work is under an open content license (like Creative Commons).

The publication may also be distributed here under the terms of Article 25fa of the Dutch Copyright Act, indicated by the "Taverne" license. More information can be found on the University of Groningen website: <https://www.rug.nl/library/open-access/self-archiving-pure/taverne-amendment>.

Take-down policy

If you believe that this document breaches copyright please contact us providing details, and we will remove access to the work immediately and investigate your claim.

Downloaded from the University of Groningen/UMCG research database (Pure): <http://www.rug.nl/research/portal>. For technical reasons the number of authors shown on this cover page is limited to 10 maximum.

Hippocampal Sclerosis in Frontotemporal Dementia: When Vascular Pathology Meets Neurodegeneration

Anne Sieben, MD, Tim Van Langenhove, PhD, MD, Yannick Vermeiren, PhD, MSc, Helena Gossye, MD, Marleen Praet, PhD, MD, Dimitri Vanhauwaert, MD, Céline Cousaert, MD, Sebastiaan Engelborghs, PhD, MD, Robrecht Raedt, PhD, MSc, Paul Boon, PhD, MD, Patrick Santens, PhD, MD, Peter Paul De Deyn, PhD, MD, Ken R. Bracke, PhD, MSc, Katia De Meulemeester, MD, Christine Van Broeckhoven, PhD DSc, Jean-Jacques Martin, PhD, MD, and Maria Bjerke, PhD, MSc

Abstract

Hippocampal sclerosis (HS) is a common neuropathological finding and has been associated with advanced age, TDP-43 proteinopathy, and cerebrovascular pathology. We analyzed neuropathological data of an autopsy cohort of early-onset frontotemporal dementia patients. The study aimed to determine whether in this cohort HS was related to TDP-43 proteinopathy and whether additional factors could be identified. We examined the relationship between HS, proteinopathies in frontotemporal

ral cortices and hippocampus, Alzheimer disease, cerebrovascular changes, and age. We confirmed a strong association between HS and hippocampal TDP-43, whereas there was a weaker association between HS and frontotemporal lobar degeneration with TDP-43 pathology (FTLD-TDP). Nearly all of the FTLD-TDP cases had TDP-43 pathology in the hippocampus. HS was present in all FTLD-TDP type D cases, in 50% of the FTLD-TDP A cohort and in 6% of the FTLD-TDP B cohort. Our data also showed a significant association between HS and vascular changes. We reviewed the literature on HS and discuss possible pathophysiological mechanisms between TDP-43 pathology, cerebrovascular disease, and HS. Additionally, we introduced a quantitative neuronal cell count in CA1 to objectify the semiquantitative visual appreciation of HS.

Key Words: Cerebrovascular disease, Frontotemporal dementia, Frontotemporal lobar degeneration, FTLD-TDP, Hippocampal sclerosis, TDP-43.

INTRODUCTION

Hippocampal sclerosis (HS) is a neuropathological diagnosis, defined as severe hippocampal neuronal loss and gliosis (1–3). HS is a well-known cause of temporal lobe epilepsy (TLE) and is often associated with drug-resistant seizures. TLE-associated HS comprises 3 types (HS ILAE types 1–3), each corresponding with a specific neuropathological correlate (4). In the context of neurodegeneration, another classification scheme is used, with HS divided into 5 subtypes, in which type 4, i.e. neuronal loss and gliosis in CA1 and the subiculum, is mostly referred to as classic HS (5). The clinical features of HS in neurodegenerative conditions are less clear than in epilepsy, with memory loss and poor consolidation of newly learned material as key symptoms (1, 6, 7). Different neurodegenerative disorders have been associated with HS, including frontotemporal dementia (FTD), Alzheimer disease (AD), tauopathies, fused-in-sarcoma (FUS) proteinopathies, and Lewy body disease (8–15).

Institute Born-Bunge, Neuropathology and Laboratory of Neurochemistry and Behavior, University of Antwerp, Antwerp, Belgium (AS, YV, SE, PPDD, J-JM, MB); Department of Neurology, Ghent University Hospital, Ghent, Belgium (AS, TVL, RR, PB, PS); Neurodegenerative Brain Diseases Group, Center for Molecular Neurology, VIB, Antwerp, Belgium (AS, TVL, HG, PPDD, CVB); Department of Neurology, AZ Jan Palfijn, Ghent, Belgium (AS, KDM); Division of Human Nutrition and Health, Chair Group of Nutritional Biology, Wageningen University and Research, Wageningen, The Netherlands (YV); Department of Neurology, Antwerp University Hospital, Edegem, Belgium (HG); Institute Born-Bunge, Laboratory of Neurogenetics, University of Antwerp, Antwerp, Belgium (HG); Department of Neurology and Center for Neurosciences (C4N), UZ Brussel and Vrije Universiteit Brussel (VUB), Brussels, Belgium (HG, SE); Department of Pathology, Ghent University Hospital, Ghent, Belgium (MP); Department of Neurosurgery, AZ Delta, Roeselare, Belgium (DV); Department of Psychiatry, AZ Jan Palfijn, Ghent, Belgium (CC); Department of Neurology and Alzheimer Research Center, University of Groningen and University Medical Center Groningen, Groningen, The Netherlands (PPDD); Department of Respiratory Medicine, Ghent University Hospital, Ghent, Belgium (KRB); Laboratory of Neurogenetics, Institute Born-Bunge, Antwerp, Belgium (CVB); Department of Biomedical Sciences, University of Antwerp, Antwerp, Belgium (CVB); Neurochemistry Laboratory, Department of Clinical Biology and Center for Neurosciences, University hospital Brussels and Free University of Brussels, Brussels, Belgium (MB)

Send correspondence to: Anne Sieben, MD, Institute Born-Bunge, Neuropathology and Laboratory of Neurochemistry and Behavior, Universiteitsplein 1—Building T 6th Floor, Campus 3 Eiken, University of Antwerp, B 2610 Wilrijk, Belgium; E-mail: Anne.sieben@ugent.be

The authors received no financial support for the research, authorship, and publication of this article and declare that they have no competing interests.

The strongest association has been observed between TDP-43 proteinopathies and HS, with a prevalence of 70%–90% of HS cases having TDP-43 pathology (5, 16–18). TDP-43 proteinopathies are a major cause of frontotemporal lobar degeneration (FTLD). FTLD includes a heterogeneous group of proteinopathies, affecting the frontal and/or temporal cortex, thus leading to clinical syndromes which are dominated by a frontal syndrome (behavioral variant FTD, [bvFTD]) or speech disorders (primary progressive aphasia, [PPA]), respectively (19, 20). Since the onset of the disease occurred before the age of 65 in 65%–80% of the patients, FTLD is considered a leading cause of presenile dementia (21). In the age group between 45 and 64 years, FTLD had a prevalence of 10–15 per 100,000 (22), whereas AD in the same age group occurred with a prevalence of 40 per 100,000 (23).

FTLD caused by TDP-43 proteinopathy (FTLD-TDP) can be subclassified into 4 types (A through D), with every type corresponding to a typical pattern of neuronal intracytoplasmic and/or intranuclear TDP-43 aggregates (24). HS was found to be present in 70% of FTLD with TDP-43 inclusions (FTLD-TDP) (16, 25, 26). On the other hand, TDP-43 pathology is often present in the mesotemporal structures of elderly patients; this has recently been described as limbic-predominant age-related TDP-43 encephalopathy (LATE). LATE is assumed to be different from FTLD, with regard to the onset and localization of the TDP-43 pathology (27–30).

Genetic factors are also linked with HS: mutations in the FTD genes *GRN* and *C9orf72* and genetic variations in *TMEM106B* and polymorphisms in *KCNMB2* and *ABCC9* have shown to be risk alleles for HS (17, 27, 31–37). Recent evidence indicates that there is a dose–response relationship and association between carrying an *APOE* 4 allele in combination with a higher TDP-43 burden and thus higher risk of HS (38, 39).

In addition to neurodegeneration, the aging brain is susceptible to other structural changes and lesions, especially cerebrovascular disease (CVD). Several groups have associated vasculo-ischemic white matter lesions with hippocampal atrophy, or have found arteriosclerotic and anoxic or hypoxic lesions in HS (30, 40–43). Recent research further hints at the link between vascular factors and TDP-43 pathology, with or without HS (44).

Finally, in “pure” HS (prevalence of 0.5% of HS cases), HS is indicated as the only neuropathological substrate for a dementia syndrome. Recent neuropathological assessment, however, suggests that even these rare, pure HS cases are combined with other degenerative changes in other parts of the brain such as vascular pathology or AD (16, 45).

Whereas previous studies focused on the aging population, prone to the co-occurrence of multiple neurodegenerative conditions, we present our findings in an autopsy cohort of early-onset FTD. Due to the younger age of our cohort, we assumed that neuropathological findings in this cohort would be less extensive compared to those in elderly patients and that fewer confounding pathologies would be present. We hypothesized that hippocampal TDP-43 pathology is necessary for the development of HS, more than FTLD-TDP pathology. Our study aimed to describe whether in this autopsy cohort, HS could be attributed to TDP-43 proteinopathy and whether ad-

ditional factors could be identified. We examined the relationship between the presence of HS, proteinopathies in frontotemporal cortices, hippocampal proteinopathies, AD, cerebrovascular changes, and age.

MATERIALS AND METHODS

Retrospective Identification of FTD Subjects

This cohort originates from the Neurobiobank of the Institute Born-Bunge (NBB-IBB, FAGG registration number FA190113) located at the University of Antwerp. All recruited and consenting subjects were included according to a standardized brain banking research protocol, and the study was approved by the Medical Ethics Committee of the University Hospital Antwerp (UZA). Cases between 1974 and March 2019 were retrospectively selected.

Cases were included when registered with a clinical diagnosis of onset <65 years of age, “frontotemporal dementia (FTD) with or without motor neuron disorder (MND),” possible or probable behavioral frontotemporal dementia (bvFTD),” “primary progressive aphasia (PPA),” or “behavioral disorders and dementia.” Behavioral disorders included apathy, disinhibition with aggression, mental rigidity, lack of insight, distractibility, or lack of personal grooming.

We identified 110 cases with a clinically differential diagnosis of possible or probable bvFTD or PPA. Clinical FTD cases that did not have FTLD but AD or other pathology were also included. We included 8 clinically healthy controls and 8 motor neuron disorder (MND) cases, for a total of 126 cases. Four cases (1 case with Creutzfeldt-Jakob disease, 1 case with Huntington disease, 1 case with diffuse Lewy body disease, 1 case with ceroid lipofuscinosis type 4) were excluded from further analysis after neuropathological assessment resulting in a final cohort of 122 cases in this study.

Neuropathological Assessment

In all our patients and controls, the brain was dissected after a mean formalin fixation (10%–12%) period of 6–8 weeks and specific regions were selected and paraffin-embedded. The following brain regions were regionally dissected based on previous protocols (46): Brodmann area (BA) 4 (gyrus precentralis), BA 6 (gyrus frontalis superior), BA 8 (frontal eye fields), BA 11 (gyrus rectus), BA 24 (gyrus cinguli), BA 22 (gyrus temporalis superior), anterior and medial hippocampus, gyrus parahippocampalis, amygdala, BA 7 (lobulus parietalis superior), BA 17 (area striata), cerebellum, thalamus, neostriatum, pallidum, mesencephalon, pons, and medulla oblongata.

White matter and vascular changes were examined in the frontal cortex, hippocampus, temporal neocortex and adjacent white matter, area striata, and cerebellum. Deep white matter was examined in the internal capsule (crus anterior and posterior), at the level of the central nucleus of the thalamus, and at the level of the maximal diameter of the external and internal part of the pallidum.

Histological analysis was performed using hematoxylin and eosin, Cresyl violet and Klüver–Barrera. Immunohistochemistry was performed with antibodies against ubiquitin

(polyclonal rabbit anti-ubiquitin REF 20458; Dako, Glostrup, Denmark), hyperphosphorylated tau (AT8; Innogenetics, Zwijnaarde, Belgium), β -amyloid (4G8; Signet, Dedham, MA), α -synuclein (polyclonal anti- α -synuclein antibody REF S3062; Sigma Aldrich, St Louis, MO), TDP-43 (TDP-43 polyclonal antibody REF 10782-2-AP; Proteintech Group, Inc., Chicago, IL), FUS (FUS/TLS monoclonal antibody REF 60160-1-Ig; Proteintech Group, Inc.), p62 (purified monoclonal mouse anti-p62 ligand REF 610833; BD Diagnostics, Erembodegem, Belgium).

Hippocampal Sclerosis

The anterior part of the hippocampus was coronally sliced caudal to the amygdala, whereas the medial part of the hippocampus was sliced at the level of the lateral geniculate body (5 μ m). Both sections were semi-quantitatively analyzed, and the slice of the medial hippocampus was also quantitatively analyzed. In this slice, the region of interest was identified and independently rated by 2 neuropathologists (JJM and AS).

CA1 was neuroanatomically identified using the descriptions of Duvernoy (47). As proposed by Rauramaa et al (5), HS was diagnosed if type 4 pathology, i.e. neuronal loss and gliosis in CA1, was present. Because gliosis is difficult to assess, we focused on neuronal loss. Cases with severe neuronal loss in CA1 due to AD were not considered to have HS. The semiquantitative analysis included a visual rating based on neuronal loss in CA1 and/or the subiculum (HS absent or present). Normal visual cell density was given a score of "0," i.e. no HS, whereas severe neuronal cell loss was rated "1." Cases were evaluated by 2 separate raters, blinded from each other (JJM and AS) (Cohen's κ : 0.80). When there was a disagreement, cases were individually discussed until consensus was reached. To determine whether these qualitative data were quantifiable, the slices were scanned using a Zeiss Axio Imager M2 microscope. Next, the pyramidal layer of CA1 was delineated using the AxioVison software (Zeiss), where pyramidal neurons were manually counted.

Proteinopathies

Every case was examined for beta-amyloid pathology, neurofibrillary tangles, Lewy bodies, FUS inclusions, and TDP-43 pathology with a specific focus on the hippocampal regions.

The proteinopathy causative for the clinical syndrome was identified. The National Institute on Aging–Alzheimer's Association Criteria were used for AD neuropathology diagnosis used (48); this was based on a Braak score for hyperphosphorylated tau pathology (49), Thal stages for amyloid pathology (50), and CERAD staging of neuritic plaques (51). To assess the likelihood of clinical correlation, we referred to the NIA-Reagan Criteria (52).

Cases were divided into 4 groups depending on the likelihood for clinical correlation: the 4 groups of "Not," "Low," "Intermediate," or "High" correlation with clinical phenotype were evaluated based on the presence of HS. Lewy body pathology classification of McKeith et al was

used (53), whereas we applied the Mackenzie criteria for TDP-43 proteinopathies (24).

Cerebrovascular Pathology and Cerebral Amyloid Angiopathy

Staging of cerebrovascular pathology was based on Deramecourt et al (54). Arteriosclerotic changes, perivascular hemosiderin deposits and dilation of the perivascular space together with hemorrhages and micro or lacunar infarcts were representative of CVD. Three groups were created: no or mild vascular alterations (score 0 or 1 of Deramecourt); moderate alterations (=score 2 of Deramecourt) or severe vascular changes (score 3 or 4 of Deramecourt), hemorrhages or infarctions. As infarctions are end-stage evidence of cerebrovascular pathology, infarctions in basal ganglia were also separately analyzed.

Cerebral amyloid angiopathy(CAA) pathology was scored as suggested by Love et al as follows: 0: no CAA; 1: sporadic (trace of occasional vessel affected); 2: moderate (one of a few vessels circumferentially affected); and 3: severe (widespread involvement of circumferentially affected vessels) (55). Cerebrovascular pathology was independently rated by 2 assessors blinded from each other (MP and AS) (Cohen's κ : 0.527).

Age

Age of death was included as a continuous variable. However, as many studies include >80 years old as a specific advanced age group, this additional variable was also created.

Statistical Analysis

The presence of HS was the primary outcome measure in this study. The discriminating ability of the quantitative neuronal cell count to predict HS was investigated through ROC curve analysis (area under the curve[AUC]). Mean neuronal cell count in the HS group versus the non-HS group was evaluated using an independent *t*-test.

Exploratory data analysis was performed by reporting the number of HS cases per level of categorical variables including: (i) FTLD-TDP, (ii) FTLD-TPD subtype, (iii) TDP-43 in hippocampus, (iv) p62 pathology in hippocampus, (v) advanced age (>80), (vi) Thal score, (vii) Braak score, (viii) AD neuropathological changes based on likelihood for clinical correlation, (ix) severity of vascular pathology in the deep white matter and basal ganglia, (x) infarctions in deep white matter and basal ganglia, (xi) CAA, (xii) age as a continuous variable, and (xiii) Deramecourt total score.

Simple logistic regression analyses were performed to investigate the influence of different variables on outcome measure. In the multivariable logistic regression analysis, associations between relevant variables and outcome measures were examined. Likelihood ratio tests were used due to small sample sizes. Estimated odds ratios and their 95% profile likelihood confidence intervals were reported. P values <0.05 were considered significant. All statistical analyses were performed in SPSS 25 (IBM SPSS version 25 Software, IBM, Corp., Armonk, NY).

TABLE 1. Study Population.

Neuropathological diagnosis	Number of patients (%)	Gender (F/M)	Mean age of death (SD)	HS (% of row)	Hippocampal TDP-43 (%)	Vascular pathology in basal ganglia (N/M/S%)	Deramecourt total score Mean (SD)
Control	8 (6.6)	5/3	73.3 (8.05)	0 (0)	0/8 (0)	12.5/62.5/25	6.5 (3.55)
FTLD	68 (55.7)	29/39	66.3 (10.13)	17 (25)	53/66 (80.3)	18.5/49.2/32.3	5.5 (2.39)
FTLD-MND	5 (4.1)	4/1	60.0 (8.63)	1 (20)	2/5(40)	60/20/20	2.8 (2.59)
MND	8 (6.6)	2/6	59.0 (8.63)	0 (0)	2/8 (25)	50/25/25	3.7 (1.67)
AD	28 (23.0)	16/12	69.6 (10.40)	6 (21.4)	14/28 (50)	44/44/12	5.8 (2.74)
VAD	5 (4.1)	1/4	68.6 (14.78)	0 (0)	1/5 (20)	20/80/0	6.0 (2.92)
Total	122 (100%)	57/65	66.9 (10.73)	24 (19.7)	72/120 (60.0)	28/47/25	5.4 (2.61)

Percentages are per neuropathological diagnosis. Vascular pathology is divided into 3 groups: 1 group without any or mild vascular alterations (N—normal), 1 group with moderate alterations (M—moderate) and 1 group with severe vascular changes or with hemorrhages or infarctions (S—severe). Total Deramecourt score varies between 0 and 20 max.

HS: hippocampal sclerosis; Hippocampal TDP-43: hippocampal TDP-43 proteinopathy; FTLD: frontotemporal lobar degeneration; FTLD-MND: frontotemporal lobar degeneration with motor neuron disease; MND: (pure) motor neuron disease without FTLD; AD: Alzheimer disease; VAD: vascular disease.

RESULTS

Description of Study Population

Our final study cohort consisted of 122 cases, of whom 73 showed FTLD or FTLD-MND pathology (68 FTLD and 5 FTLD-MND cases), whereas 49 cases had a non-FTLD-MND neuropathology diagnosis: 28 cases with AD as primary neuropathological diagnosis, 5 cases with severe cerebral vascular pathology (VAD), 8 patients with MND (without FTLD), and 8 controls without major neuropathological findings (Table 1). Gender differences were evenly distributed over neuropathological subgroups. Mean age of death was 66.9 years (from 34 to 92 years old), 14 cases were classified as advanced age (>80 years old) (Table 1).

Neuropathology

FTLD Proteinopathies

Of the 73 FTLD subjects, 66% had FTLD-TDP, with FTLD-TDP type B being the most prevalent (41%). The second most common subtype was FTLD-TDP type A (16%), followed by FTLD-TDP type D pathology (6%). Only 1 subject had FTLD-TDP type C. The 5 subjects with FTLD-MND-TDP had TDP-43 type B pathology. The remaining FTLD population was either diagnosed with a tauopathy: PSP/CBD tauopathy (20.5%), Pick disease (5.5%), GGT (2.7%) and AGD (1 case), or with FTLD-FUS (2 cases), or with FTLD-UPS (1 case) (Fig. 1A–C). In the non-FTLD counterparts, 7 out of 8 MND subjects had a TDP-43 proteinopathy, while 1 subject had MND pathology related to *SOD1* mutation with ubiquitinated inclusions in the motor neuron cells.

Hippocampal Proteinopathies

Hippocampal TDP-43 pathology was found in 60.0% of all cases. Of these cases with hippocampal TDP-43, 60% were associated with FTLD-TDP (27.9% FTLD-TDP A, 60.5% FTLD-TDP B, 2.3% FTLD-TDP C, 9.3% FTLD-TDP D). In the remaining 40% of hippocampal TDP-43 cases without as-

sociated FTLD-TDP, AD was present in 48%, whereas 31% had PSP/CBD. FTLD-UPS, GGT, VAD, Pick, MND-TDP, and MND-Ubi were present in 3.4% (Tables 1 and 2). None of the control cases had any hippocampal TDP-43. In 5 cases, mesotemporal TDP-43 pathology was suggestive for LATE. In the hippocampal TDP-43-negative group (48 of 120 cases), 6% (n = 3) had p62-immunoreactive, tau-negative, and α -synuclein-negative neuronal cytoplasmic inclusions in the hippocampus.

Vascular Changes

On the whole, 28% of cases had none to mild CVD in the basal ganglia and deep white matter, whereas 47.4% had moderate CVD, and 25.0% had severe CVD. Focusing on the presence of infarctions as the end stage of CVD, we found infarctions in the deep white matter and basal ganglia in 16.4% of cases (n = 19). Infarctions that were spread over the entire brain were found in 24.1% of cases (n = 28). Mean Deramecourt total score was 5.4 out of 20 (SD 2.6). Minimum score was 0 out of 20, and maximum score was 14 out of 20. Six cases were excluded from analysis, as there was no possibility to score thalamus and/or basal ganglia.

Cerebral Amyloid Angiopathy

8.8% (n = 10) had sporadic CAA changes, 11.4% (n = 13) had circumferential CAA pathology, 14% (n = 16) had widespread CAA. 65.8% (n = 75) of the patient population did not have any CAA. Twelve cases were excluded due to technical factors, such as absence of sampling.

Alzheimer Disease

In total, 71 cases were identified with AD pathology: a high correlation (see [52]) with clinical phenotype was present in 14.8% ($A_3B_3C_{2/3}$), whereas 12.3% had intermediate AD pathology ($A_{1/2}B_{2/3}C_{2/3}$ to $A_3B_2C_{2/3}$) and in 31.1% of cases, the AD pathology was considered to be low ($A_{1/2}B_{1/2/3}C_1$ to $A_{2/}$

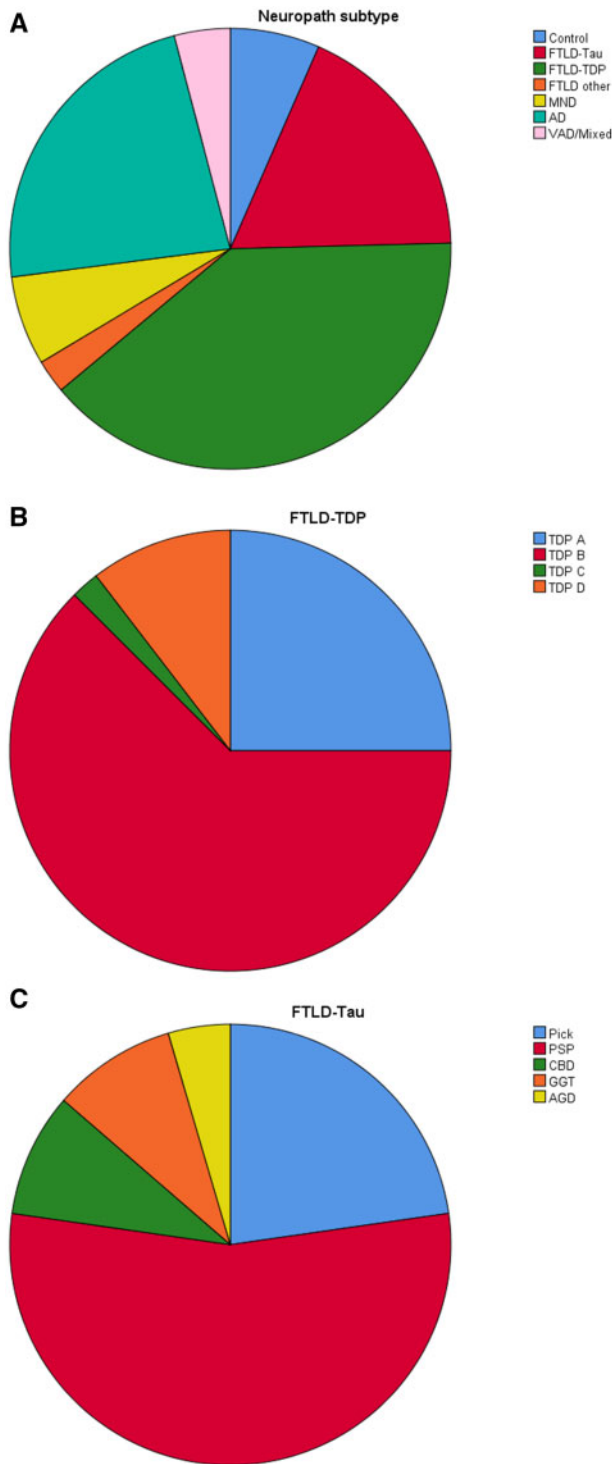


FIGURE 1. (A) Pie chart with percentages of proteinopathy associated with clinical syndrome. **(B)** Pie chart demonstrating percentages of FTLT-TDP subtypes. **(C)** Pie chart with percentages of FTLT-tau subtypes. FTLT: frontotemporal lobar degeneration; FTLT-tau: frontotemporal lobar degeneration with tauopathy; FTLT other: collection of all non-tau-non-TDP FTLT cases; FTLT-TDP: frontotemporal lobar degeneration with TDP-43 proteinopathy; MND: (pure) motor neuron disease without FTLT; AD: Alzheimer disease; VAD: vascular

$3B_1C_{1/2/3}$). In the 28 cases that had AD as a primary diagnosis, 18 had a high correlation with clinical phenotype (i.e. severe AD pathology), 9 had intermediate AD pathology and 1 subject had only mild AD pathology. In 43 cases, AD pathology occurred as coexisting pathology (i.e. considered not to be a factor contributing to the clinical phenotype) including in 4 out of 8 clinically healthy controls. In most cases, AD pathology was considered to be low.

Hippocampal Sclerosis

In total, 24 out of 122 patients had HS (Fig. 2). Out of these 24 cases, 18 HS subjects had FTLT(-MND), of which FTLT(-MND)-TDP was present in 13 of HS cases. Three HS subjects had FTLT-tau, 2 HS subjects had FTLT-FUS, and 6 HS subjects had AD (Table 2).

Association between Proteinopathies, Vascular Disease, Age, and HS

There was no association between FTLT(-MND)-TDP and HS ($p = 0.101$). Six out of 12 subjects with FTLT-TDP A had HS, whereas only 2 out of 30 subjects with FTLT-TDP B had HS. HS was not present in 1 FTLT-TDP C case, but all 5 subjects with FTLT-TDP D had HS ($p < 0.001$) (Table 3). In the FTLT-Tau group, no associations could be made between the tauopathies and HS. The 2 subjects with FTLT-FUS had HS. In the MND, VAD and control groups, no HS was present (Table 1). In the 28 subjects with AD, 6 had HS (21.4%). Addition of the AD pathology to the regression model did not improve the model nor the prediction of the presence of HS ($p = 0.902$).

There was a strong association between hippocampal TDP-43 pathology and HS ($p = 0.002$), regardless of neuropathological primary diagnosis, with hippocampal TDP-43 present in 20 of 24 HS cases (Tables 2 and 3). Additionally, p62-positive, TDP-43-negative hippocampal inclusions were not associated with HS ($p = 0.246$).

Vascular changes in deep white matter and basal ganglia were analyzed in 116 cases. There was an association between severe vascular changes and HS presence in 9 out of 29 cases ($p = 0.034$). In the group with no to mild vascular changes, 2 out of 32 subjects had HS (6.3%), whereas 11 out of 55 subjects with moderate vascular changes (20.0%) had HS, and 9 out of 29 subjects with severe vascular changes had HS (31.0%).

There was no association between infarctions at the level of deep white matter and basal ganglia and thalamus and HS ($p = 0.694$). The Deramecourt total score in the “no HS” group was 5.48 (standard deviation of 2.748) versus 5.14 (standard deviation of 1.957) in the “HS” group, showing no value as a predictor of HS ($p = 0.591$) (Table 3).CAA was present in 39 of 114 cases. Sixteen of 39 demonstrated severe CAA, of which 3 had HS ($p = 0.156$).

In our study population, the mean age in the “no HS” group was 67.16 (10.218) and in the “HS” group was 65.58 (12.796), showing no association between HS and age ($p = 0.518$). In the 14

disease; mixed: mixed dementia VAD + AD. AGD: argyrophilic grain disease; CBD: corticobasal degeneration; GGT: globular glial tauopathy; PSP: progressive supranuclear palsy.

TABLE 2. Hippocampal TDP Pathology in Relation to Neuropathological Diagnosis and HS.

Neuropathological diagnosis	Number of patients	Cases with Hipp TDP		Cases without Hipp TDP	
		Total	Cases with HS	Total	Cases with HS
FTLD-tau	22	11	2	11	1
AGD	1	0	–	1	0
CBD	2	2	1	0	–
GGT	2	1	0	1	0
Pick	4	1	1	3	1
PSP	13	7	0	6	0
FTLD-(MND)-TDP	46	43	12	3	0
TDP A	12	12	6	0	–
TDP B*	29	26	2	3	0
TDP C	1	1	0	0	–
TDP D	4	4	4**	0	–
FTLD-FUS	2	0	–	2	2
FTLD-UPS	1	1	0	0	–
Control	8	0	–	8	0
MND	8	2	0	6	0
MND-TDP	7	1	0	6	0
MND-ubi	1	1	0	0	0
AD	28	14	6	14	0
VAD	5	1	0	4	0
Total	120 (2 missing)	72	20***	48	3

Numbers are absolute numbers. Only 71 FTLD cases are included because hippocampal TDP43 assessment was not possible in 2 cases.

*Five cases with FTLD-MND-TDP had TDP type B pathology.

**Five FTLD-TDP cases had HS; hippocampal TDP pathology could be assessed in only 4 cases.

***Absolute number of HS cases is 20 + 3 = 23, as a result of 1 case (see *) that could not be assessed.

HS: hippocampal sclerosis; Hipp TDP: hippocampal TDP-43 proteinopathy; FTLD: frontotemporal lobar degeneration; FTLD-tau: frontotemporal lobar degeneration with tauopathy; AGD: argyrophilic grain disease; CBD: corticobasal degeneration; GGT: globular glial tauopathy; PSP: progressive supranuclear palsy; FTLD-(MND)-TDP: frontotemporal lobar degeneration (with motor neuron disease) with TDP-43 proteinopathy; FTLD-FUS: frontotemporal lobar degeneration with fused-in-sarcoma proteinopathy; FTLD-UPS: frontotemporal lobar degeneration with ubiquitin immunoreactive inclusions; MND: (pure) motor neuron disease without FTLD; MND-TDP: motor neuron disease with TDP-43 proteinopathy; MND-ubi: motor neuron disease with ubiquitin immunoreactive inclusions; AD: Alzheimer disease; VAD: vascular disease.

cases over >80 years, 3 had HS ($p = 0.862$). We could not find any significant predictive value of advanced age (>80), hippocampal TDP-43, severe vascular pathology or CAA.

Because hippocampal TDP-43, FTLD-TDP type D, and severe vascular pathology in deep white matter tracts were considered significant predictor variables for HS in this univariable logistic regression analysis model, we consequently examined these variables following multiple variable regression analysis. However, after inclusion of these variables, only hippocampal TDP-43 and FTLD-TDP subtype D remained significant predictive factors for HS (Table 4).

Neuronal Count in CA1

The visual score was compared to the absolute neuronal number count in CA1. A total of 115 out of 122 cases were completed. As expected, the mean neuronal number in CA1 was higher in the group without HS than in the group with neuronal loss in CA1. The mean pyramidal neuronal cell count in CA1 in the “no HS” group was 586.11 on average (95% CI: 537.59; 634.63), whereas in the “HS” group, the mean number was 249.77 (95% CI: 177.09; 322.46) (Fig. 3A).

With these results, it could be assumed that our semi-quantitative visual rating scale was sufficient to discriminate

whether HS was present or not. This was also illustrated with an AUC value of 0.90 (95% CI: 0.83; 0.97), thus assuming that neuronal counting in CA1 has sufficient discriminatory power to identify the presence of HS (Fig. 3B; sensitivity: 82%, specificity: 82%, Youden Index: 0.635).

DISCUSSION

In this autopsy cohort of mostly early-onset dementia patients, we confirmed the strong association between HS and hippocampal TDP-43, in addition to that with FTLD-TDP type D, and to a lesser extent with FTLD-TDP type A. Nearly all of the subjects with FTLD-TDP had TDP-43 pathology in the hippocampus (Table 2), while 6 out of 12 in the FTLD-TDP A cohort, 2 out of 30 in the FTLD-TDP B cohort and all subjects in the FTLD-TDP D cohort had HS ($n = 5$). Interestingly, our data also showed an association between HS and severe vascular changes in the deeper white matter and basal ganglia.

Hippocampal TDP-43 Pathology and HS

The specific concept of “Pathoklise” was proposed by Vogt, suggesting that intrinsic hippocampal neuronal cell characteristics lead to the susceptibility of cell death (56). In

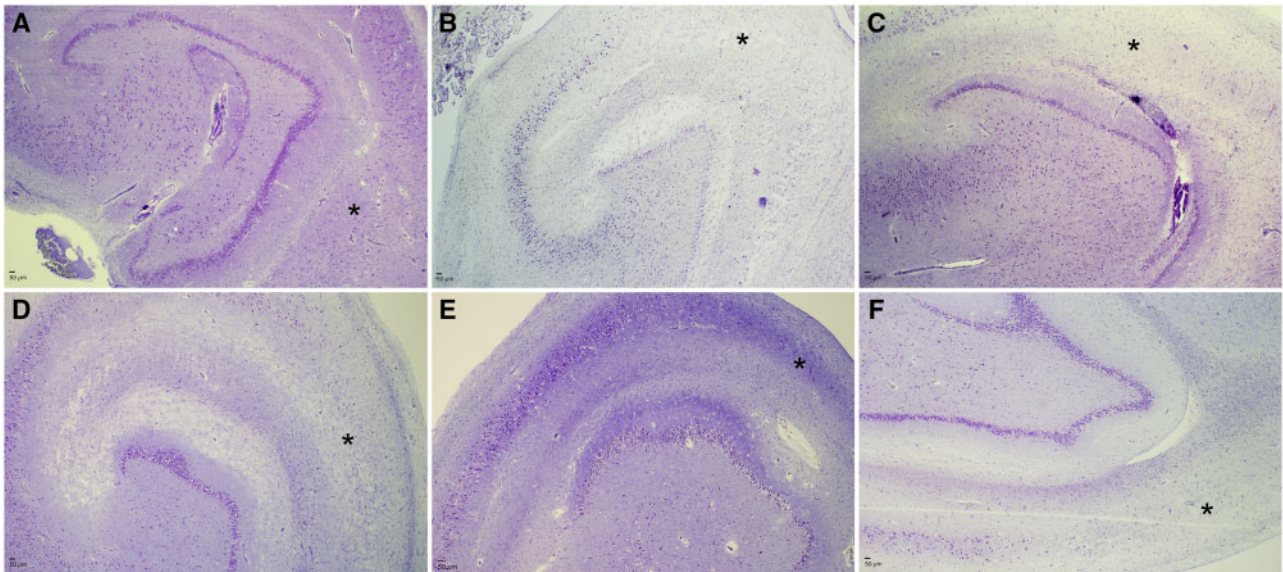


FIGURE 2. Hippocampal sclerosis with neuronal loss in CA1 demonstrated by CV stain. **(A)** AD. **(B)** FTLD-tau (Pick disease). **(C)** FTLD-FUS. **(D)** FTLD-TDP type A. **(E)** FTLD-TDP type B. **(F)** FTLD-TDP type D. Note the relatively mild neuronal loss in CA1 in **E** (*CA1).

1986, Rothman and Olney showed that the neurons of CA1 have more glutamate receptors compared to the other more resilient hippocampal neurons. Disease states such as epilepsy have been known to induce an overabundance of glutamate in the synapse, which can be toxic due to postsynaptic Ca^{2+} influx. Neurons that are richer in glutamate receptors are more prone to cell death, referred to as glutamate excitotoxicity (57). Additionally, the more vulnerable CA1 neurons have less Ca^{2+} buffering capacity, due to small concentrations or even absence of calbindin and chromogranin A compared to more resistant neurons (58). Therefore, a poor ability to protect against the excitotoxicity effect of glutamate and Ca^{2+} influx is the pathogenetic mechanism of HS in conditions such as epilepsy.

In neurodegeneration, the pathogenesis of HS is not completely understood. The link between glutamate excitotoxicity and neurodegeneration is not clear. Other pathways have been suggested to have an impact on neuronal loss in CA1, such as an altered inhibitory input (59). Different groups also hypothesized that CA1 neurons have an impaired degradation of proteins, thus leading to an accumulation of possible toxic protein deposits (60–62).

The association between TDP-43 pathology and neuronal loss has been explained by a pathophysiological mechanism through reactive oxygen species (ROS) and a deficient or dysfunctional heat shock response. This leads to an accumulation of TDP-43 in stress granules and the subsequent formation of toxic TDP-43 oligomers (63, 64). We suggest that this mechanism occurs in every cell affected by TDP-43 inclusions, and depending on intrinsic cell qualities, neurodegeneration and sclerosis occur, as seen in CA1.

A relation between hippocampal TDP-43 pathology and HS in epilepsy has not been found, nor a relation between FTLD and epilepsy (65, 66), but recent data in the epilepsy re-

search field suggest a cognitive decline in patients with TLE, with tau pathology being present in TLE-associated HS cases. Also, alpha-synuclein has been reported to be higher in cerebrospinal fluid and serum of patients with refractory epilepsy (67, 68). In our study, we did not find any relation between HS and hippocampal tauopathy nor synucleinopathy. Furthermore, when looking at the severity of the AD pathology, we could not find any association with HS. No link between HS and CAA was found.

HS and Cerebrovascular Pathology

The significant association between HS and cerebrovascular pathology suggests a vascular contribution to the development of HS. This was previously hypothesized by Spielmeyer (69) and Uchimura (quoted by Boling et al [70]) and recently reproduced by Neltner et al and Zarow et al (41, 43). Spielmeyer stated that CA1, being most compromised in HS, has a suboptimal vessel supply compared to neighboring parts, as it is located in a watershed area between the anterior choroidal artery and posterior cerebral arteries (71). Recently, the differences between the hippocampal and neocortical vasculature, with a challenging small number of capillary anastomoses in the hippocampus and high degree of interindividual variations of hippocampal blood supply, have also been proposed as a potential underlying predisposing factor following 7-Tesla MRI studies (72, 73). Next to local ischemic events, other groups have suggested a systemic hypoxia/ischemia hypothesis, while still others have assumed a disruption of the blood–brain barrier (74–76).

In 2012, a staging system was developed to rate cerebrovascular changes, which allowed standardizing and semi-quantifying cerebral vascular changes (54). This staging scheme was used to score cerebrovascular pathology in frontal and temporal lobes, as well as deep white matter at the level of

TABLE 3. Univariate Logistic Regression Analysis.

Variables	HS (%)	Univariable logistic regression analysis			
		Unadjusted OR	95%CI	p-value	
FTLD-(MND)-TDP	Yes	13/48 (27.1)	2.13	0.86–5.34	0.101
	No	11/74 (14.9)			
TDP-43 subtype	TDP-43 A	6/12 (50)	4.91	1.38–17.81	<0.001 (0.0001)
	TDP-43 B	2/30 (6.7)	0.43	0.08–1.60	
	TDP-43 C*	0/1 (0)			
	TDP-43 D	5/5 (100)	54.05	5.52–7280.83	
	MND	0/7 (0)	0.33	0.00–3.04	
Hippocampal TDP-43 (2 missings)	No TDP-43	11/67 (16.4)			0.002
	Yes	20/72 (27.8)	5.77	1.83–25.62	
Hippocampal P62	No	3/48 (6.3)			0.246
	Yes	2/19 (10.5)	0.43	0.07–1.67	
Advanced age of death	No	22/103 (21.4)			0.862
	>80	3/14 (21.4)	1.13	0.24–4.01	
AD neuropathological changes	<80	21/108 (19.4)			0.902
	High	3/18 (16.7)	0.82	0.17–3.12	
	Moderate	4/15 (26.7)	1.49	0.36–5.47	
	Low	7/38 (18.4)	0.93	0.31–2.69	
Cerebrovascular changes in basal gan- glia (6 missings)	None	10/51 (19.6)			0.034
	Severe	9/29 (31)	6.75	1.54–47.41	
	Moderate	11/55 (20)	3.75	0.92–25.36	
Infarction in basal gan- glia (6 missings)	None to mild	2/32 (6.3)			0.694
	Yes	3/19 (15.8)	0.77	0.17–2.61	
Cerebral amyloid angiopathy	N	19/97 (19.6)			0.156
	3	3/16 (18.8)	1.01	0.23–4.04	
	2	4/13 (30.8)	2.12	0.51–7.66	
	1	0/10 (0)	0.00	0.00–0.00	
	0	13/75 (17.3)			
Age of death	<i>M (SD)</i>				0.518
	HS	65.6 (12.80)	0.99	0.95–10.3	
Deramecourt total score	No HS	67.2 (10.22)			0.591
	HS	5.1 (1.96)	0.95	0.78–1.14	
	No HS	5.5 (2.75)			

*TDP-43 type C was excluded from statistical analysis due to small sample size (n = 1).

HS: hippocampal sclerosis; FTLD-(MND)-TDP: frontotemporal lobar degeneration (with motor neuron disease) with TDP-43 proteinopathy; Hippocampal TDP: hippocampal TDP-43 proteinopathy; Hippocampal p62: hippocampal p62 proteinopathy (TDP43 negative); MND: motor neuron disease; Montine: AD neuropathological changes cf NIA-AA criteria with cases grouped, based on high, moderate, low, and no(ne) likelihood for clinical correlation; Deramecourt total score: score of cerebrovascular pathology (varies between 0 and 20 max).

the thalamus and basal ganglia. Because previous studies described a correlation between arteriolosclerosis and HS (41), between deep white matter hyperintensities (WMH) and hippocampal volume (40), and between deep WMH and hippocampal regional cerebral blood flow (77), we focused on the cerebrovascular pathology in basal ganglia and deep white matter.

Using this staging system, we did not find any association between the total vascular score and HS, but we did find a relation between HS and the severe cerebrovascular alterations in deeper white matter tracts and basal ganglia, i.e. arteriolosclerosis, perivascular demyelination, and perivascular hemosiderin deposition. These findings are in line with the findings of Neltner et al (41).

TABLE 4. Multivariable Logistic Regression Analysis.

Multivariable logistic regression analysis				
		Adjusted OR	95% CI	p-value
Hippocampal TDP-43	YES	6.03	1.49–33.89	0.011
Cerebrovascular changes in basal ganglia	Moderate	2.97	0.59–28.96	0.202
	Severe	5.28	0.88–55.87	0.069
FTLD-(MND)-TDP*	TDP-43 A	1.48	0.34–6.38	0.597
	TDP-43 B	0.25	0.04–1.08	0.065
	TDP-43 D	23.88	1.77–3640.95	0.014
	MND	0.52	0.00–6.19	0.655
Age of death	>80	1.41	0.28–6.25	0.654

*TDP-43 type C was excluded from statistical analysis due to extreme small sample size (n = 1).

HS: hippocampal sclerosis; Hippocampal TDP-43: hippocampal TDP-43 proteinopathy; FTLD-TDP: frontotemporal lobar degeneration with TDP-43 proteinopathy; TDP-43 A ->D: subtypes of FTLD-TDP proteinopathy A->D respectively; MND: motor neuron disease.

In ischemic conditions, CA1 neurons are more vulnerable compared to other neurons, a phenomenon which has been explained by the “calpain–cathepsin” hypothesis. In CA1 neurons, the presence of ROS and altered Ca²⁺ homeostasis, as a result of hypoxia or ischemia, leads to the carbonylation of heat shock protein 70 (HSP70), inducing a destabilization of the lysosome. The carbonylated HSP70 is cleaved by calpain, which causes a loss of integrity of the lysosomal membrane. Due to leakage of the lysosomal membrane, cathepsin spills into the cell cytoplasm, which in turn induces the degeneration of CA1 neurons. In other neurons this calpain–cathepsin axis does not exist, probably because of less mobilization of intracellular calcium, compared to CA1 neurons (75, 78).

Cerebrovascular Pathology and TDP-43

In 2007, Lee et al (66) did not find any TDP-43 pathology in anoxic and ischemic lesions. In contrast to these findings, Katsumata et al (44) found an association between arteriolosclerosis pathology and TDP-43 in the amygdala and entorhinal cortex in persons without *APOE 4* homozygosity. Additionally, in 2010, Geser et al found that certain chronic vascular diseases have the potential to drive the phosphorylation and misfolding of TDP-43 (79). However, further data exploring possible pathways between TDP-43 and vascular pathology are lacking, and also the design of our study does not allow any statements about this possible interaction.

Advanced Age

Whereas different studies and reviews have been published emphasizing the association between HS and advanced age (42, 80), we could not find any association between these 2 variables. However, the difference between our study and previously published reports is that the mean age in our group was 66.9 years, whereas, to our knowledge, the average age in other studies was higher. As the focus of our study was on

early-onset dementia patients, we can assume that our group of elderly patients was too small to draw conclusions about any relation between advanced age and HS. Even if we consider the relatively long disease course and/or advanced age of some cases, there was no evident association with HS, unlike other publications (18). Nevertheless, based on our results, the presence of HS also needs to be considered in early-onset dementias.

Neuronal Count in CA1

Additionally, we were able to associate the semiquantitative visual diagnosis of HS with a quantitative neuronal cell count in CA1. This implies that the neuronal cell loss is sufficient for diagnosing HS. If future research identifies pyramidal neurons in CA1 and the subiculum, we suggest that quantitative measurement is preferential in the diagnosis of HS.

Limitations

Our study has several limitations. We were not able to make any conclusion concerning symmetrical or asymmetrical hippocampal involvement, as our research protocol includes that only the right hemisphere is processed for neuropathological analysis, whereas the left is stored at –80°C for further genetic or neurochemical analyses. Furthermore, examining the right brain hemisphere could be a cause of underdiagnosing HS, as TDP-43 pathology mostly occurs bilaterally in the hippocampus, whereas one should keep in mind that in 40%–55% of cases, HS is only asymmetrical, inducing a false-negative detection of HS in approximately 25% of HS cases (11, 43). This could induce an underestimation of the correlation between TDP-43 and HS. Overall, the small number of cases in our study makes our statistical analyses tenuous. However, it allows us to detect the tendency that HS is strongly associated with TDP-43 pathology in the hippocampus, and we assume that small vessel changes play an additional role, as previously detected in older cohorts (41). Our study lacked a systematic genetic analysis, due to the retrospective concept of our study.

Conclusions

We were able to confirm the strong relationship between hippocampal TDP-43 pathology and HS. We found that the FTLD-TDP type D and to a lesser extent type A cases more frequently showed HS. Interestingly, the odds for HS were significantly higher when subjects had more severe vascular changes in deeper white matter and basal ganglia.

Due to the concept of this autopsy study, with HS as endpoint, we cannot make a statement about any relation between CVD and TDP-43 pathology. Referring to our data, we assume that CVD does not have a direct impact on development of HS. Possible mechanisms of action could include a double hit phenomenon with hippocampal TDP-43 pathology and cerebrovascular pathology leading to HS, or cerebrovascular pathology acting as a modulatory contributing factor on TDP-pathology and thus HS. An upstream effect inducing cerebrovascular pathology, TDP-43 pathology and HS separately from each other, can neither be ruled out.

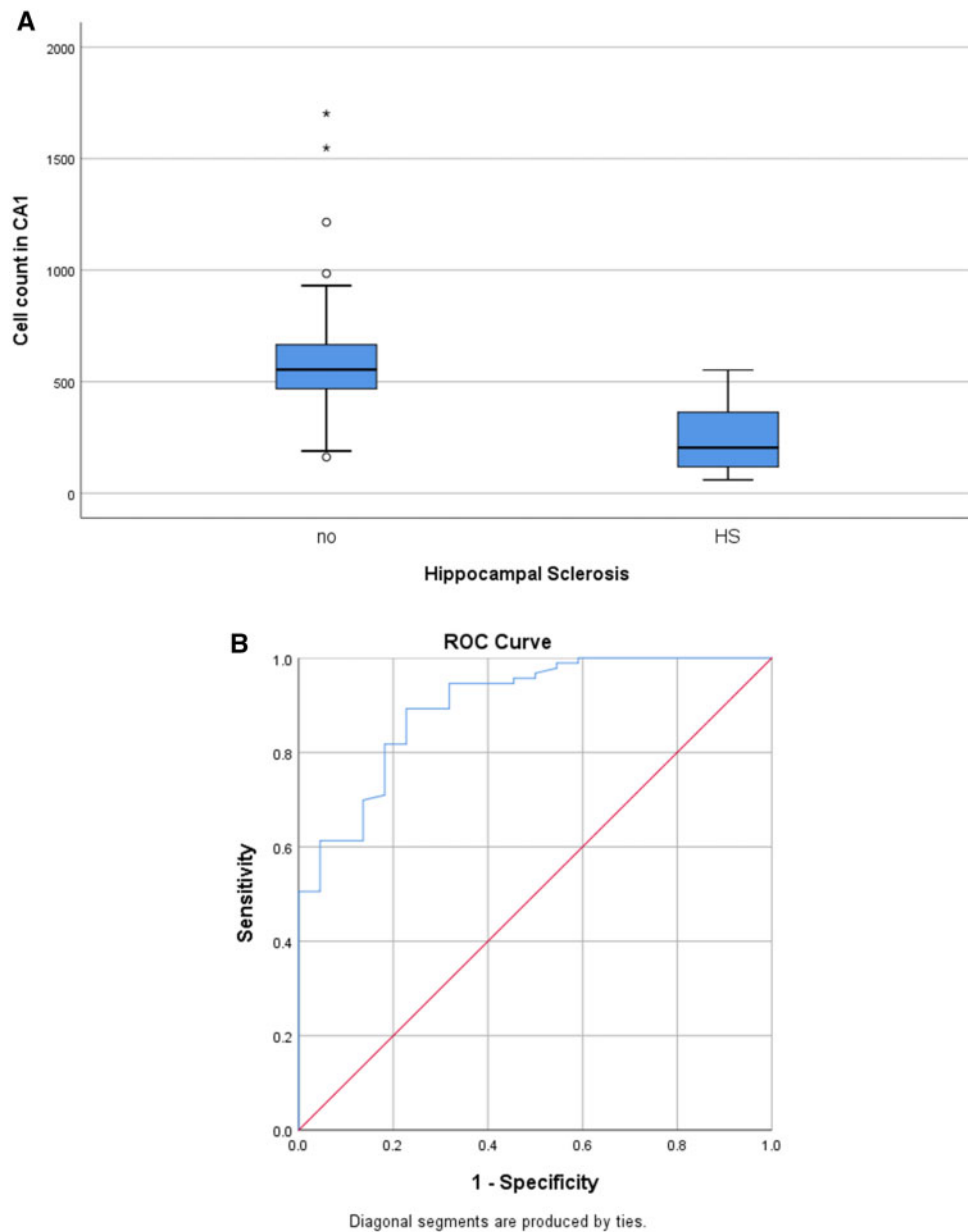


FIGURE 3. (A) Box plots show the mean cell count in CA1 in the group without HS (“no”) versus the group with HS (“HS”). As expected, the mean neuronal number in CA1 is lower in the “HS” group. **(B)** ROC curve with AUC of cell count in CA1 plotted against HS.

Furthermore, a quantitative neuronal cell count in CA1 was introduced to objectify the semiquantitative visual appreciation of HS, implying that neuronal cell loss in CA1 is sufficient for diagnosing HS. We propose that quantitative measurement is preferential in the diagnosis of HS.

We suggest that research should also focus on the assessment of hippocampal functioning in the workup of FTD patients, through imaging and neuropsychological testing, as this could be a biomarker of TDP-43 pathology and vascular risk factors. Additionally, the systematic gene analysis with screening of the known FTLT-DTP associated genes—but also of the HS risk genes—may be the next step forward in

identifying and clarifying dementia-specific pathophysiological mechanisms of TDP-43 leading to HS.

ACKNOWLEDGMENTS

The authors are grateful to the patients and their families. We acknowledge the contribution of the lab technicians Tinne Koninckx, Ilse Possemiers and photographer Inge Bats. We further thank the personnel of the Genetic Service Facility of VIB (<http://www.vibgeneticservicefacility.be>), the Neurobiobank of the Institute Born-Bunge, the lab technicians of the Department of Respiratory Medicine (Ghent Uni-

versity Hospital), and the neurological departments of the participating hospitals.

REFERENCES

- Corey-Bloom J, Sabbagh MN, Bondi MW, et al. Hippocampal sclerosis contributes to dementia in the elderly. *Neurology* 1997;48:154–60
- Dickson DW, Davies P, Bevona C, et al. Hippocampal sclerosis: A common pathological feature of dementia in very old (> or = 80 years of age) humans. *Acta Neuropathol* 1994;88:212–21
- Jellinger KA. Hippocampal sclerosis: A common pathological feature of dementia in very old humans. *Acta Neuropathol* 1994;88:599
- Blumcke I, Thom M, Aronica E, et al. International consensus classification of hippocampal sclerosis in temporal lobe epilepsy: A Task Force report from the ILAE Commission on Diagnostic Methods. *Epilepsia* 2013;54:1315–29
- Rauramaa T, Pikkarainen M, Englund E, et al. Consensus recommendations on pathologic changes in the hippocampus: A postmortem multi-center inter-rater study. *J Neuropathol Exp Neurol* 2013;72:452–61
- Jellinger K, Ala TA, Beh GO, Frey WH. Pure hippocampal sclerosis: A rare cause of dementia mimicking Alzheimer's disease. *Neurology* 2000;55:735–40
- Zarow C, Vinters HV, Ellis WG, et al. Correlates of hippocampal neuron number in Alzheimer's disease and ischemic vascular dementia. *Ann Neurol* 2005;57:896–903
- Barker WW, Luis CA, Kashuba A, et al. Relative frequencies of Alzheimer disease, Lewy body, vascular and frontotemporal dementia, and hippocampal sclerosis in the State of Florida Brain Bank. *Alzheimer Dis Assoc Disord* 2002;16:203–12
- Nag S, Yu L, Capuano AW, et al. Hippocampal sclerosis and TDP-43 pathology in aging and Alzheimer disease. *Ann Neurol* 2015;77:942–52
- Beach TG, Sue L, Scott S, et al. Hippocampal sclerosis dementia with tauopathy. *Brain Pathol* 2006;13:263–78
- Probst A, Taylor KI, Tolnay M. Hippocampal sclerosis dementia: a reappraisal. *Acta Neuropathol* 2007;114:335–45
- Lashley T, Rohrer JD, Bandopadhyay R, et al. A comparative clinical, pathological, biochemical and genetic study of fused in sarcoma proteinopathies. *Brain* 2011;134:2548–64
- Trieu T, Sajjadi SA, Kawas CH, et al. Risk factors of hippocampal sclerosis in the oldest old: the 90+ study. *Neurology* 2018;91:e1788–e98
- Aoki N, Murray ME, Ogaki K, et al. Hippocampal sclerosis in Lewy body disease is a TDP-43 proteinopathy similar to FTLTDP Type A. *Acta Neuropathol* 2015;129:53–64
- Blass DM, Hatanpaa KJ, Brandt J, et al. Dementia in hippocampal sclerosis resembles frontotemporal dementia more than Alzheimer disease. *Neurology* 2004;63:492–97
- Amador-Ortiz C, Lin WL, Ahmed Z, et al. TDP-43 immunoreactivity in hippocampal sclerosis and Alzheimer's disease. *Ann Neurol* 2007;61:435–45
- Pao WC, Dickson DW, Crook JE, et al. Hippocampal sclerosis in the elderly: Genetic and pathologic findings, some mimicking Alzheimer disease clinically. *Alzheimer Dis Assoc Disord* 2011;25:364–68
- Lopez OL, Kofler J, Chang Y, et al. Hippocampal sclerosis, TDP-43, and the duration of the symptoms of dementia of AD patients. *Ann Clin Transl Neurol* 2020;7:1546–56
- Rascovsky K, Hodges JR, Knopman D, et al. Sensitivity of revised diagnostic criteria for the behavioural variant of frontotemporal dementia. *Brain* 2011;134:2456–77
- Gorno-Tempini ML, Hillis AE, Weintraub S, et al. Classification of primary progressive aphasia and its variants. *Neurology* 2011;76:1006–14
- Rabinovici GD, Miller BL. Frontotemporal lobar degeneration: Epidemiology, pathophysiology, diagnosis and management. *CNS Drugs* 2010;24:375–98
- Neary D, Snowden J, Mann D. Frontotemporal dementia. *Lancet Neurol* 2005;4:771–80
- Ratnavalli E, Brayne C, Dawson K, et al. The prevalence of frontotemporal dementia. *Neurology* 2002;58:1615–21
- Mackenzie IR, Neumann M, Baborie A, et al. A harmonized classification system for FTLTDP pathology. *Acta Neuropathol* 2011;122:111–13
- Josephs KA, Stroh A, Dugger B, et al. Evaluation of subcortical pathology and clinical correlations in FTLTDP subtypes. *Acta Neuropathol* 2009;118:349–58
- Kvellido-Alme M, Brathen G, White LR, et al. The prevalence and subtypes of young onset dementia in central Norway: population-based study. *JAD* 2019;69:479–87
- Nelson PT, Dickson DW, Trojanowski JQ, et al. Limbic-predominant age-related TDP-43 encephalopathy (LATE): Consensus working group report. *Brain* 2019;142:1503–27
- Larner AJ, Griffiths TD. Limbic-predominant age-related TDP-43 encephalopathy (LATE). *Brain* 2019;142:e42–e42
- Zhang L, Chen Y, Liu M, et al. TDP-43 and limbic-predominant age-related TDP-43 encephalopathy. *Front Aging Neurosci* 2019;11:376
- Amador-Ortiz C, Ahmed Z, Zehr C, et al. Hippocampal sclerosis dementia differs from hippocampal sclerosis in frontal lobe degeneration. *Acta Neuropathol* 2007;113:245–52
- Beecham GW, Hamilton K, Naj AC, the Alzheimer's Disease Genetics Consortium (ADGC), et al. Genome-wide association meta-analysis of neuropathologic features of Alzheimer's disease and related dementias. *PLoS Genet* 2014;10:e1004606
- Murray ME, Bieniek KF, Banks Greenberg M, et al. Progressive amnesic dementia, hippocampal sclerosis, and mutation in C9ORF72. *Acta Neuropathol* 2013;126:545–54
- Dickson DW, Baker M, Rademakers R. Common variant in GRN is a genetic risk factor for hippocampal sclerosis in the elderly. *Neurodegenerative Dis* 2010;7:170–74
- Josephs KA, Dickson DW. Hippocampal sclerosis in tau-negative frontotemporal lobar degeneration. *Neurobiol Aging* 2007;28:1718–22
- Pletnikova O, Sloane KL, Renton AE, et al. Hippocampal sclerosis dementia with the C9ORF72 hexanucleotide repeat expansion. *Neurobiol Aging* 2014;35:2419 e17–21
- Mackenzie IR. The neuropathology and clinical phenotype of FTD with progranulin mutations. *Acta Neuropathol* 2007;114:49–54
- Mackenzie IR, Baker M, Pickering-Brown S, et al. The neuropathology of frontotemporal lobar degeneration caused by mutations in the progranulin gene. *Brain* 2006;129:3081–90
- Wennberg AM, Tosakulwong N, Lesnick TG, et al. Association of apolipoprotein E epsilon4 with transactive response DNA-binding protein 43. *JAMA Neurol* 2018;75:1347–54
- Yang HS, Yu L, White CC, et al. Evaluation of TDP-43 proteinopathy and hippocampal sclerosis in relation to APOE epsilon4 haplotype status: A community-based cohort study. *Lancet Neurol* 2018;17:773–81
- Eckerstrom C, Olsson E, Klasson N, et al. High white matter lesion load is associated with hippocampal atrophy in mild cognitive impairment. *Dement Geriatr Cogn Disord* 2011;31:132–38
- Neltner JH, Abner EL, Baker S, et al. Arteriolosclerosis that affects multiple brain regions is linked to hippocampal sclerosis of ageing. *Brain* 2014;137:255–67
- Nelson PT, Smith CD, Abner EL, et al. Hippocampal sclerosis of aging, a prevalent and high-morbidity brain disease. *Acta Neuropathol* 2013;126:161–77
- Zarow C, Sitzer TE, Chui HC. Understanding hippocampal sclerosis in the elderly: Epidemiology, characterization, and diagnostic issues. *Curr Neurol Neurosci Rep* 2008;8:363–70
- Katsumata Y, Fardo DW, Kukull WA, et al. Dichotomous scoring of TDP-43 proteinopathy from specific brain regions in 27 academic research centers: associations with Alzheimer's disease and cerebrovascular disease pathologies. *Acta Neuropathol Commun* 2018;6:142
- Ala TA, Beh GO, Frey WH, 2nd. Pure hippocampal sclerosis: A rare cause of dementia mimicking Alzheimer's disease. *Neurology* 2000;54:843–48
- Vermeiren Y, Van Dam D, Aerts T, et al. Brain region-specific monoaminergic correlates of neuropsychiatric symptoms in Alzheimer's disease. *JAD* 2014;41:819–33
- Duvernoy H. *The Human Hippocampus*. New York: Springer, 2005
- Hyman BT, Phelps CH, Beach TG, et al. National Institute on Aging-Alzheimer's Association guidelines for the neuropathologic assessment of Alzheimer's disease. *Alzheimers Dement* 2012;8:1–13
- Braak H, Alafuzoff I, Arzberger T, et al. Staging of Alzheimer disease-associated neurofibrillary pathology using paraffin sections and immunocytochemistry. *Acta Neuropathol* 2006;112:389–404

50. Thal DR, Rub U, Orantes M, et al. Phases of A beta-deposition in the human brain and its relevance for the development of AD. *Neurology* 2002; 58:1791–800
51. Mirra SS, Heyman A, Mckeel D, participating CERAD neuropathologists, et al. The Consortium to Establish a Registry for Alzheimer's Disease (CERAD). Part II. Standardization of the neuropathologic assessment of Alzheimer's disease. *Neurology* 1991;41:479–86
52. Hyman BT, Trojanowski JQ. Consensus recommendations for the post-mortem diagnosis of Alzheimer disease from the National Institute on Aging and the Reagan Institute Working Group on diagnostic criteria for the neuropathological assessment of Alzheimer disease. *J Neuropathol Exp Neurol* 1997;56:1095–97
53. Mckeith IG, Boeve BF, Dickson DW, et al. Diagnosis and management of dementia with Lewy bodies: ourth consensus report of the DLB Consortium. *Neurology* 2017;89:88–100
54. Deramecourt V, Slade JY, Oakley AE, et al. Staging and natural history of cerebrovascular pathology in dementia. *Neurology* 2012;78:1043–50
55. Love S, Chalmers K, Ince P, et al. Development, appraisal, validation and implementation of a consensus protocol for the assessment of cerebral amyloid angiopathy in post-mortem brain tissue. *Am J Neurodegener Dis* 2014;3:19–32
56. Vogt O. Der Begriff der Pathoklise. *J Psychol Neurol (Leipzig)* 1925;31: 245–55
57. Rothman SM, Olney JW. Glutamate and the pathophysiology of hypoxic–ischemic brain damage. *Ann Neurol* 1986;19:105–11
58. Sloviter RS. Calcium-binding protein (calbindin-D28k) and parvalbumin immunocytochemistry: Localization in the rat hippocampus with specific reference to the selective vulnerability of hippocampal neurons to seizure activity. *J Comp Neurol* 1989;280:183–96
59. Thom M, Sisodiya S. Epilepsy. In: Love S. *Greenfield's Neuropathology*. Florida: CRC Press 2015:683–739
60. Hatanpaa KJ, Raisanen JM, Herndon E, et al. Hippocampal sclerosis in dementia, epilepsy, and ischemic injury: Differential vulnerability of hippocampal subfields. *J Neuropathol Exp Neurol* 2014;73:136–42
61. Lewis KA, Su Y, Jou O, et al. Abnormal neurites containing C-terminally truncated alpha-synuclein are present in Alzheimer's disease without conventional Lewy body pathology. *Am J Pathol* 2010;177:3037–50
62. Chornenkyy Y, Fardo DW, Nelson PT. Tau and TDP-43 proteinopathies: Kindred pathologic cascades and genetic pleiotropy. *Lab Invest* 2019;99: 993–1007
63. Chen HJ, Mitchell JC, Novoselov S, et al. The heat shock response plays an important role in TDP-43 clearance: Evidence for dysfunction in amyotrophic lateral sclerosis. *Brain* 2016;139:1417–32
64. Chang HY, Hou SC, Way TD, et al. Heat-shock protein dysregulation is associated with functional and pathological TDP-43 aggregation. *Nat Commun* 2013;4:2757
65. Nelson PT, Schmitt FA, Lin Y, et al. Hippocampal sclerosis in advanced age: Clinical and pathological features. *Brain* 2011;134:1506–18
66. Lee EB, Lee VM, Trojanowski JQ, et al. TDP-43 immunoreactivity in anoxic, ischemic and neoplastic lesions of the central nervous system. *Acta Neuropathol* 2008;115:305–11
67. Tai XY, Bernhardt B, Thom M, et al. Review: eurodegenerative processes in temporal lobe epilepsy with hippocampal sclerosis: clinical, pathological and neuroimaging evidence. *Neuropathol Appl Neurobiol* 2018;44:70–90
68. Rong H, Jin L, Wei W, et al. Alpha-synuclein is a potential biomarker in the serum and CSF of patients with intractable epilepsy. *Seizure* 2015; 27:6–9
69. Spielmeyer WZ. Die Pathogenese des epileptischen Krampfes. *Zeitschrift für die gesamte Neurologie und Psychiatrie* 1927;109:501–20
70. Boling WW, Ettl S, Sano K. Professor Uchimura, Ammon's horn sclerosis, and the German influence on Japanese neuroscience. *J Hist Neurosci* 2010;19:182–94
71. Jicha GA, Nelson PT. Hippocampal sclerosis, argyrophilic grain disease, and primary age-related tauopathy. *Continuum* 2019;25:208–33
72. Spallazzi M, Dobisch L, Becke A, et al. Hippocampal vascularization patterns: high-resolution 7 Tesla time-of-flight magnetic resonance angiography study. *Neuroimage* 2019;21:101609
73. Perosa V, Priester A, Ziegler G, et al. Hippocampal vascular reserve associated with cognitive performance and hippocampal volume. *Brain* 2020;143:622–34
74. Ellison D. Neuropathology. In: Ellison D, Love S, eds. *A Reference Text of CNS Pathology*. New York: Mosby 2004:647
75. Schmidt-Kastner R, Freund TF. Selective vulnerability of the hippocampus in brain ischemia. *Neuroscience* 1991;40:599–636
76. Mott RT, Thore CR, Moody DM, et al. Reduced ratio of afferent to total vascular density in mesial temporal sclerosis. *J Neuropathol Exp Neurol* 2009;68:1147–54
77. Waldemar G, Christiansen P, Larsson HB, et al. White matter magnetic resonance hyperintensities in dementia of the Alzheimer type: morphological and regional cerebral blood flow correlates. *J Neurol Neurosurg Psychiatry* 1994;57:1458–65
78. Zhu H, Yoshimoto T, Imajo-Ohmi S, et al. Why are hippocampal CA1 neurons vulnerable but motor cortex neurons resistant to transient ischemia? *J Neurochem* 2012;120:574–85
79. Geser F, Robinson JL, Malunda JA, et al. Pathological 43-kDa transactivation response DNA-binding protein in older adults with and without severe mental illness. *Arch Neurol* 2010;67:1238–50
80. Smirnov DS, Galasko D, Hansen LA, et al. Trajectories of cognitive decline differ in hippocampal sclerosis and Alzheimer's disease. *Neurobiol Aging* 2019;75:169–77