

University of Groningen

**Transcriptional heterogeneity between primary adult grey and white matter astrocytes underlie differences in modulation of in vitro myelination**

Werkman, Inge L.; Dubbelaar, Marissa L.; van der Vlies, Pieter; de Boer-Bergsma, Jelkje J.; Eggen, Bart J. L.; Baron, Wia

*Published in:*  
Journal of neuroinflammation

*DOI:*  
[10.1186/s12974-020-02045-3](https://doi.org/10.1186/s12974-020-02045-3)

**IMPORTANT NOTE: You are advised to consult the publisher's version (publisher's PDF) if you wish to cite from it. Please check the document version below.**

*Document Version*  
Publisher's PDF, also known as Version of record

*Publication date:*  
2020

[Link to publication in University of Groningen/UMCG research database](#)

*Citation for published version (APA):*

Werkman, I. L., Dubbelaar, M. L., van der Vlies, P., de Boer-Bergsma, J. J., Eggen, B. J. L., & Baron, W. (2020). Transcriptional heterogeneity between primary adult grey and white matter astrocytes underlie differences in modulation of in vitro myelination. *Journal of neuroinflammation*, 17(1), [373]. <https://doi.org/10.1186/s12974-020-02045-3>

**Copyright**

Other than for strictly personal use, it is not permitted to download or to forward/distribute the text or part of it without the consent of the author(s) and/or copyright holder(s), unless the work is under an open content license (like Creative Commons).

The publication may also be distributed here under the terms of Article 25fa of the Dutch Copyright Act, indicated by the "Taverne" license. More information can be found on the University of Groningen website: <https://www.rug.nl/library/open-access/self-archiving-pure/taverne-amendment>.

**Take-down policy**

If you believe that this document breaches copyright please contact us providing details, and we will remove access to the work immediately and investigate your claim.

Downloaded from the University of Groningen/UMCG research database (Pure): <http://www.rug.nl/research/portal>. For technical reasons the number of authors shown on this cover page is limited to 10 maximum.

RESEARCH

Open Access



# Transcriptional heterogeneity between primary adult grey and white matter astrocytes underlie differences in modulation of *in vitro* myelination

Inge L. Werkman<sup>1</sup>, Marissa L. Dubbelaar<sup>1</sup>, Pieter van der Vlies<sup>2</sup>, Jelkje J. de Boer-Bergsma<sup>2</sup>, Bart J. L. Eggen<sup>1</sup> and Wia Baron<sup>1\*</sup> 

## Abstract

**Background:** Multiple sclerosis (MS) is an inflammation-mediated demyelinating disease of the central nervous system that eventually results in secondary axonal degeneration due to remyelination failure. Successful remyelination is orchestrated by astrocytes (ASTRs) and requires sequential activation, recruitment, and maturation of oligodendrocyte progenitor cells (OPCs). In both MS and experimental models, remyelination is more robust in grey matter (GM) than white matter (WM), which is likely related to local differences between GM and WM lesions. Here, we investigated whether adult gmASTRs and wmASTRs per se and in response to MS relevant Toll-like receptor (TLR) activation differently modulate myelination.

**Methods:** Differences in modulation of myelination between adult gmASTRs and wmASTRs were examined using an *in vitro* myelinating system that relies on a feeding layer of ASTRs. Transcriptional profiling and weighted gene co-expression network analysis were used to analyze differentially expressed genes and gene networks. Potential differential modulation of OPC proliferation and maturation by untreated adult gmASTRs and wmASTRs and in response to TLR3 and TLR4 agonists were assessed.

**Results:** Our data reveal that adult wmASTRs are less supportive to *in vitro* myelination than gmASTRs. WmASTRs more abundantly express reactive ASTR genes and genes of a neurotoxic subtype of ASTRs, while gmASTRs have more neuro-reparative transcripts. We identified a gene network module containing cholesterol biosynthesis enzyme genes that positively correlated with gmASTRs, and a network module containing extracellular matrix-related genes that positively correlated with wmASTRs. Adult wmASTRs and gmASTRs responding to TLR3 agonist Poly(I:C) distinctly modulate OPC behavior, while exposure to TLR4 agonist LPS of both gmASTRs and wmASTRs results in a prominent decrease in myelin membrane formation.

(Continued on next page)

\* Correspondence: [w.baron@umcg.nl](mailto:w.baron@umcg.nl)

<sup>1</sup>Biomedical Sciences of Cells & Systems, Section Molecular Neurobiology, University of Groningen, University Medical Center Groningen, A. Deusinglaan 1, 9713, AV, Groningen, the Netherlands  
Full list of author information is available at the end of the article



© The Author(s). 2020 **Open Access** This article is licensed under a Creative Commons Attribution 4.0 International License, which permits use, sharing, adaptation, distribution and reproduction in any medium or format, as long as you give appropriate credit to the original author(s) and the source, provide a link to the Creative Commons licence, and indicate if changes were made. The images or other third party material in this article are included in the article's Creative Commons licence, unless indicated otherwise in a credit line to the material. If material is not included in the article's Creative Commons licence and your intended use is not permitted by statutory regulation or exceeds the permitted use, you will need to obtain permission directly from the copyright holder. To view a copy of this licence, visit <http://creativecommons.org/licenses/by/4.0/>. The Creative Commons Public Domain Dedication waiver (<http://creativecommons.org/publicdomain/zero/1.0/>) applies to the data made available in this article, unless otherwise stated in a credit line to the data.

(Continued from previous page)

**Conclusions:** Primary adult gmASTRs and wmASTRs are heterogeneous at the transcriptional level, differed in their support of *in vitro* myelination, and their pre-existing phenotype determined TLR3 agonist responses. These findings point to a role of ASTR heterogeneity in regional differences in remyelination efficiency between GM and WM lesions.

**Keywords:** Astrocytes, Multiple sclerosis, Myelination, Oligodendrocyte, Region

## Background

Remyelination is a natural regenerative process that occurs after demyelination, to form new myelin membranes around denuded axons. In the central nervous system (CNS), remyelination is executed by oligodendrocytes (OLGs) and involves activation, recruitment, and differentiation of oligodendrocyte progenitor cells (OPCs) into mature, myelinating OLGs [1]. Remyelination is orchestrated by transient signaling of reactive astrocytes (ASTRs) [2, 3]. Similar as during CNS development [4], ASTRs support oligodendrocytes and myelin membrane formation by extracellular matrix (ECM) remodeling [5, 6] and the supply of fatty acids and cholesterol [4, 7, 8]. Upon demyelination, ASTR reactivity is induced by a variety of inflammatory mediators such as Toll-like receptor (TLR) ligands [9–13] as well as by myelin debris, and includes changes in ASTR morphology, gene expression, and function [14–19]. ASTR reactivity can be beneficial or detrimental for remyelination [2, 12, 20, 21], as ASTR responses toward injury vary and depend on the type of injury. In this regard, two subtypes of injury-dependent reactive ASTRs have been described; neuro-inflammation-induced A1-ASTRs and ischemia-induced A2-ASTRs [14, 22]. A1-ASTRs possess a neurotoxic phenotype and secrete factors that inhibit OPC proliferation, migration, and differentiation, and that are toxic to mature OLGs [22]. By contrast, A2-ASTRs appear more neuroprotective and more supportive toward repair [22]. Although the classification of ASTR reactivity into A1-ASTRs and A2-ASTRs is very useful as a concept, it is clear that additional injury-dependent astrocyte reactivity states exist [23]. Also at homeostatic conditions, ASTRs are not uniform, and multiple studies have described ASTRs diversity based on their morphology, gene expression, and function [22, 24–30].

Historically, ASTRs are divided into two groups; fibrous ASTRs that mainly reside in the white matter (WM) and the morphologically more complex protoplasmic ASTRs that are present in the grey matter (GM) [27, 31, 32]. Multiple single-nucleus RNA sequencing studies identify two to three clear distinct groups of ASTRs dispersed throughout adult GM and WM [29, 33–35], while morphological and functional studies identify up to nine different groups of ASTRs in rodents

[25, 36]. ASTR reactivity is also region-dependent, i.e., upon cuprizone-induced demyelination, ASTRs reactivity is evident earlier in the cortex, a GM area, than the corpus callosum, a WM area, but ASTR reactivity is more extensive in ASTRs of the corpus callosum [19, 37–39]. Furthermore, demyelination is delayed in the cortex compared to the corpus callosum [38], and remyelination occurs faster in GM than in WM areas [37]. Also, in the chronic demyelinating disease multiple sclerosis (MS), remyelination is more efficient in GM than in WM [40, 41], but ultimately fails in both areas, contributing to disease progression [1, 42, 43]. As in toxin-induced demyelination rodent models, ASTR reactivity differs between GM and WM MS lesions. Hypertrophic ASTRs form a glial scar in and around inflammatory WM lesions, but not around lesions in the GM [12, 15, 44, 45]. This difference in ASTR reactivity may contribute to the more efficient remyelination in GM MS lesions [3, 37, 41, 46]. In addition, neurotoxic A1-ASTRs are present in WM MS lesions [22], while the presence of A1-ASTRs in GM MS lesions has not been analyzed yet. It is currently not clear whether intrinsic differences between gmASTRs and wmASTRs contribute to regional differences in ASTR reactivity and/or whether they differently respond to the same type of injury and inflammation. By performing transcriptional profiling and the use of an *in vitro* myelinating system that depend on ASTRs, we addressed here whether adult gmASTRs and wmASTRs are different cell populations that distinctly modulate myelination. In addition, as innate TLR-mediated signaling plays a role in MS pathology [47–50], we assessed whether gmASTRs and wmASTRs display a differential response to TLR3 and TLR4 agonists. Our findings revealed that adult wmASTRs and gmASTRs display transcriptional heterogeneity and that wmASTRs are less supportive to *in vitro* myelination.

## Methods

### Primary cell cultures

#### Adult astrocytes

Adult astrocytes (ASTRs) were isolated from young adult female Wistar rats brains via a non-shake off procedure as described [51], with minor modifications. To obtain gmASTRs, the cerebral cortices were dissected

and meninges removed. Of the residual non-cortex tissue, the amygdala was discarded and the remaining non-cortical regions (WM tracts including corpus callosum, mixed GM and WM tracts, including hippocampus and thalamus, and deep GM parts, including basal ganglia) were kept in HBSS. Although the dissected non-cortical ASTRs contain gmASTRs, they mainly consist of wmASTRs and were therefore referred to as wmASTRs. Brain tissue was kept in Hank's balanced salt solution (HBSS, Life Technologies) and mechanically dissected using scissors. Then, 0.05% trypsin (Sigma) and 0.003% DNase (Roche) in 1 mL HBSS was added and incubated for 15 min at 37 °C, followed by centrifugation for 7 min at 400 g. The pellet was resuspended in papain digestion mix [24 µg/mL L-cysteine (Sigma), 40 µg/mL DNase I, 30 U/mL papain from papaya latex (Sigma) in MEM (Life Technologies)] incubated for 15 min at 37 °C. The digestion was stopped using OVO [40 µg/mL DNase I, 1 mg/mL soybean trypsin inhibitor (Sigma), 50 µg/mL bovine serum albumin (BSA, Sigma) in Leibowitz L-15 medium (Sigma)] for 6 min at room temperature. The cell suspension was centrifuged for 7 min at 400 g and resuspended in 15 mL HBSS. Hereafter, the cells were settled for 30 min before the upper layer was separated from the lower cell fraction. The cell fractions were diluted in 15 mL HBSS and centrifuged for 7 min at 400 g. Cell pellets were resuspended in AA+ medium [10% fetal bovine serum (FBS), 15 mM HEPES (Gibco), 0.04% gentamicin (Life Technologies), 14.3 mM NaHCO<sub>3</sub> (Merck), 100 U/mL penicillin, 100 µg/mL streptomycin, 4 mM L-glutamine]. The cells were cultured for 20 days at 37 °C in tissue flasks (Nunc T80; Thermo Fisher Scientific) that were coated with poly-L-lysine (PLL, 5 µg/mL, Sigma). Medium exchange occurred once every 3–4 days. The cells were passaged at least once using trypsin and used for experiments after 2–3 weeks, or collected in RNA protect (Qiagen) for 3'-RNA sequencing. To obtain ASTR-conditioned medium (ACM), ASTRs were cultured for 24 h either untreated or in the presence of 50 µg/mL TLR3 agonist polyinosine-polycytidylic acid (Poly(I:C), Sigma) or 200 ng/mL TLR4 agonist lipopolysaccharide (LPS, Sigma), after which cells were washed and cultured for another 24 h in defined SATO medium [5 µg/mL bovine insulin (Sigma), 50 µg/mL human holo-transferrin (Sigma), 100 µg/mL BSA fraction V (Sigma), 62 ng/mL progesterone (Sigma), 16 µg/mL putrescine (Sigma), 5 ng/mL sodium selenite (Sigma), 400 ng/mL T3 (Sigma), 400 ng/mL T4 (Sigma), 4 mM L-glutamine, 100 U/mL penicillin and streptomycin]. Hereafter, ACM was collected and filtered using a 0.45 µm filter, to remove cell debris. To obtain ASTR extracellular matrix (ECM), ASTRs were cultured for 48 h either untreated or in the presence of Poly(I:C) or LPS, after which cells were lysed by water (two times 1 h, cell lysis

was checked by a microscope) and ECM was scraped in sterile PBS containing a cocktail of protease inhibitors (Complete, Roche). Notably, adult gmASTRs and wmASTRs were always generated at the same time from the same animal and cultured at similar conditions.

#### **Oligodendrocyte progenitor cells**

Oligodendrocyte progenitor cells (OPCs) were isolated from mixed glia cultures of the cortex of newborn rat forebrains using a shake-off procedure as described [52–54]. Briefly, contaminating microglia were removed from the flask by a pre-shake on an orbital shaker (Innova 4000, New Brunswick) at 150 rpm for 1 h at 37 °C and OPCs were obtained after a shake at 240 rpm for 20–22 h at 37 °C. The detached OPCs were further purified by differential adhesion on non-tissue dishes [54]. The enriched OPC cultures contained 95–97% OPCs (Olig2-positive), 1–3% astrocytes (GFAP-positive), and less than 1% microglia (IB4-positive) and neurons (TuJ1-positive). The OPCs were cultured on PLL-coated 13-mm coverslips (35,000 cells/coverslip) or on ECM-coated 8-well Permanox chamber slides (8 µg of ECM/chamber 28,000 cells/chamber). For proliferation, OPCs were cultured for 24 h in defined SATO medium containing 10 ng/mL platelet-derived growth factor-AA (PDGF-AA, Peprotech) and 10 ng/mL fibroblast growth factor-2 (FGF2, Peprotech) in the presence or absence of ACM (diluted 1:1). For other assays, cells were cultured for 2 days in SATO medium supplemented with PDGF-AA and FGF2, followed by differentiation upon growth factor withdrawal and culturing for 6 days in SATO supplemented with 0.5% FBS. Cells were cultured in the presence or absence of ACM (diluted 1:1) or on ECM coatings, after which differentiation, myelin membrane formation, and metabolic activity were determined.

#### **Spinal cord cultures**

Myelinating spinal cord cultures that rely on a monolayer of feeding ASTRs were generated from 17-day-old Wistar rat embryos as described with minor modifications [55]. Meninges were removed from the dissected spinal cord, and mechanical dissociation of the tissue was performed in MEM. Hereafter, the tissue was enzymatically digested with a mixture of trypsin (2.5%, Sigma) and liberase DH (2.5 mg/mL, Roche) for 20 min at 37 °C. The enzymatic reaction was stopped by addition of Soybean trypsin inhibitor solution [0.52 mg/mL soybean trypsin inhibitor (Sigma), 40 µg/mL DNase (Roche), and 3 mg/mL BSA fraction V in Leibovitz's L15 medium]. After centrifugation for 7 min at 220 g, cells were resuspended in plating medium consisting of 50% DMEM (1500 mg/L glucose, Gibco), 25% horse serum (Invitrogen), 25% HBSS with calcium and magnesium (Gibco), and 2 mM L-glutamine (Invitrogen). The total

spinal cord cell suspension was plated at a density of 200,000 cells/well in a 24-wells containing a 2-day-old confluent feeding layer of adult gmASTRs or wmASTRs (120,000 cells/24 well) in 500  $\mu$ L plating medium. When cells were attached, 500  $\mu$ L growth medium [DMEM (4500 mg/L glucose, Gibco) supplemented with 5 mg/mL holotransferrin (Sigma), 20 mM putrescine (Sigma), 4  $\mu$ M progesterone (Sigma), 6  $\mu$ M selenium (Sigma), 10 ng/mL biotin (Sigma), 50 nM hydrocortisone (Sigma), and 10  $\mu$ g/mL insulin (Sigma)] was added. Every 2–3 days, half of the medium was replaced with new growth medium. Insulin was omitted from growth medium after 12 days in culture and cultures were analyzed at 26–30 days in culture.

### Gene expression and WGCNA

RNA was isolated using the RNeasy Plus Micro Kit (QIAGEN) and RNA quality was assessed using a BioRad Experion Highsense RNA kit according to manufacturer's instructions. All RIN-values were higher than 7.9. Library preparation was performed with the Lexogen QuantSeq 3' mRNA-Seq Library Prep kit for Illumina according to manufacturer's instructions. All samples were pooled and sequenced on the Illumina NexSeq 500. Data was processed using the pipelines that were provided by MOLGENIS (<https://github.com/molgenis>). Quality control of the data was performed on the raw fastq files with fastQC (0.11.3). Next, HiSat (0.1.5) was used for alignment of the sequenced reads against the *Rattus norvegicus* genome (38.82) allowing 2 mismatches, and the aligned data was sorted with samtools (1.2). Finally, HTSeq (0.6.1p1) was used to quantify the data using the parameters: --stranded=no and --mode=union. High and low expressed genes were distinguished using the Data-adaptive flag method for RNA-sequencing (DAFS). Normalization and processing of the raw reads were performed with EdgeR (3.20.9). To determine differentially expressed genes, an absolute logarithm of the fold change (logFC) of more than 2 and an FDR < 0.01 were used. Volcano plots were made using the ggplot2 package. The DAFS filtered genes were used as input to generate a signed network (with a soft power of 10) with the topological overlap matrix (TOM) function (TOMsimilarity). Cutting of the hierarchical clustered TOM with the function cutreeDynamic with a minimum cluster size of 100 and cutHeight 0.99 was used to determine the different modules. Afterward, similar gene expression modules were merged with mergeCloseModules (cutHeight 0.25). In the end, userListEnrichment was used to identify possible traits of the identified modules where the grey lists were omitted, with enabling of the parameters: useBrainLists, useBloodAtlases, useStemCellLists, useBrainRegionMarkers, usePalazzoloWang, useImmunePathwayLists. For Gene Ontology and Gene-

Concept Network visualization, Clusterprofiler with the enrichplot package were used. All analyses were performed in R.

### Western blotting

Cells were scraped in 500  $\mu$ L of lysis buffer (1% Triton X-100, 50 mM Tris-HCl, 150 mM NaCl, 5 mM EDTA, and protease inhibitor cocktail). The total protein concentration was determined using a BioRad DC-protein assay and BSA as standard according to manufacturer's instructions. Cell lysates (20  $\mu$ g) were loaded onto a 7.5% SDS-polyacrylamide gel. After gel electrophoresis, proteins were transferred onto polyvinylidene fluoride (PVDF) membranes (Immobilon-FL, Merck Millipore) by wet transfer. PVDF membranes were blocked for 1 h with Odyssey blocking buffer (Li-Cor Biosciences), and incubated overnight with primary antibodies against GFAP (anti-GFAP, polyclonal, 1:5000, Dako, Z033430) at 4 °C. After washing with PBS containing 1% Tween-20, membranes were incubated with IRDye-conjugated secondary antibodies (Li-Cor Biosciences, Lincoln; 1:3000) for 1 h. As loading control,  $\beta$ -actin (monoclonal mouse anti- $\beta$ -actin, 1:2000, Sigma, A5441) was used. The membranes were scanned using the Odyssey Imaging System (Li-Cor), and analyzed by densitometry using FIJI ImageJ (NIH).

### Immunocytochemistry

#### Primary cells

Live and fixed immunostainings were performed as described [54]. For live cell immunolabelling, non-specific antibody binding was blocked with 4% BSA for 10 min at 4 °C, followed by incubation of the cells with A2B5 antibody (1:5, kind gift of Dr. Thijs Lopez-Cardozo, Utrecht, the Netherlands) for 30 min at 4 °C. Cells were rinsed twice with PBS and incubated with appropriate Alexa-conjugated antibody (1:500, Millipore) for 25 min at 4 °C. After two washes with PBS, cells were fixed with 4% paraformaldehyde (PFA) in PBS for 20 min at room temperature and incubated for 15 min with 1  $\mu$ g/mL DAPI (Sigma) to counterstain nuclei. For staining of internal antigens, PFA-fixed cells were permeabilized with ice-cold methanol for 10 min. Non-specific antibody binding was blocked with 4% BSA for 30 min after which cells were incubated with either anti-Ki67 (1  $\mu$ g/mL, Abcam, ab15580) or anti-myelin basic protein (MBP, 1:250, Serotec, MCA409S) antibodies at room temperature. Cells were washed three times with PBS before the appropriate Alexa-conjugated antibodies (1:500, Millipore) were added together with 1  $\mu$ g/mL DAPI for 30 min at room temperature. After washing with PBS, cells were mounted with mounting medium (Dako). Cells were analyzed using a conventional immunofluorescence microscope (Leica DMI 6000 B)



equipped with Leica Application Suite Advanced Fluorescence software. In each independent experiment, for each condition, 15 random images were acquired resulting in the analysis of 150–250 cells per condition. Proliferation was defined as the percentage Ki67-positive of A2B5-positive cells, differentiation as the percentage of MBP-positive cells of DAPI-stained cells, and myelin membrane formation as the percentage of MBP-positive cells that elaborate myelin membranes irrespective of the extent of the membrane. Notably, myelin membranes are membranous structures spread between cellular processes.

### Spinal cord cultures

Spinal cord cultures were fixed with 4% PFA for 30 min, followed by blocking and permeabilization with 0.1% Triton X-100 in 4% BSA in PBS for 45 min. Cells were washed thrice with PBS and incubated with anti-MBP antibody (1:250) and anti-neurofilament-H (NF, polyclonal chicken anti-neurofilament, 1:5000, EnCor Biotechnology Inc., 2796-7) for 90 min at room temperature. After washing twice with PBS, cultures were incubated with appropriate FITC- or TRITC-conjugated secondary antibodies (1:50, Jackson Immunolaboratories) combined with DAPI for 45 min at room temperature. Coverslips were mounted and cultures were analyzed by confocal microscopy (SP8 AOBS Microscope, Leica Microsystems) using Leica Confocal Software. The percentage of myelinated axons was calculated in ImageJ as an area in pixels in each image occupied by both myelin and axons divided by the axonal density as described [56, 57]. In each experiment, 5 images per coverslip and 2 coverslips per condition were analyzed.

### Metabolic activity and cytotoxicity

Metabolic activity of cells was assessed by 3-(4,5-dimethyl-2-thiazolyl)-2,5-diphenyl-2H-tetrazolium bromide (MTT; Sigma)-reduction, while cytotoxicity was analyzed with a lactate dehydrogenase (LDH; Roche) assay. For the MTT-reduction assay, 500  $\mu\text{g}/\text{mL}$  MTT was added to each well and left to incubate for 4 h at 37  $^{\circ}\text{C}$ . Cells were resuspended in dimethylsulfoxide and absorption was measured at 570 nm. Data represent values relative to control. LDH assays were performed according to manufacturer's instructions using the medium of the cells from the MTT-reduction assay and related to LDH in medium of lysed untreated cells.

### Statistics

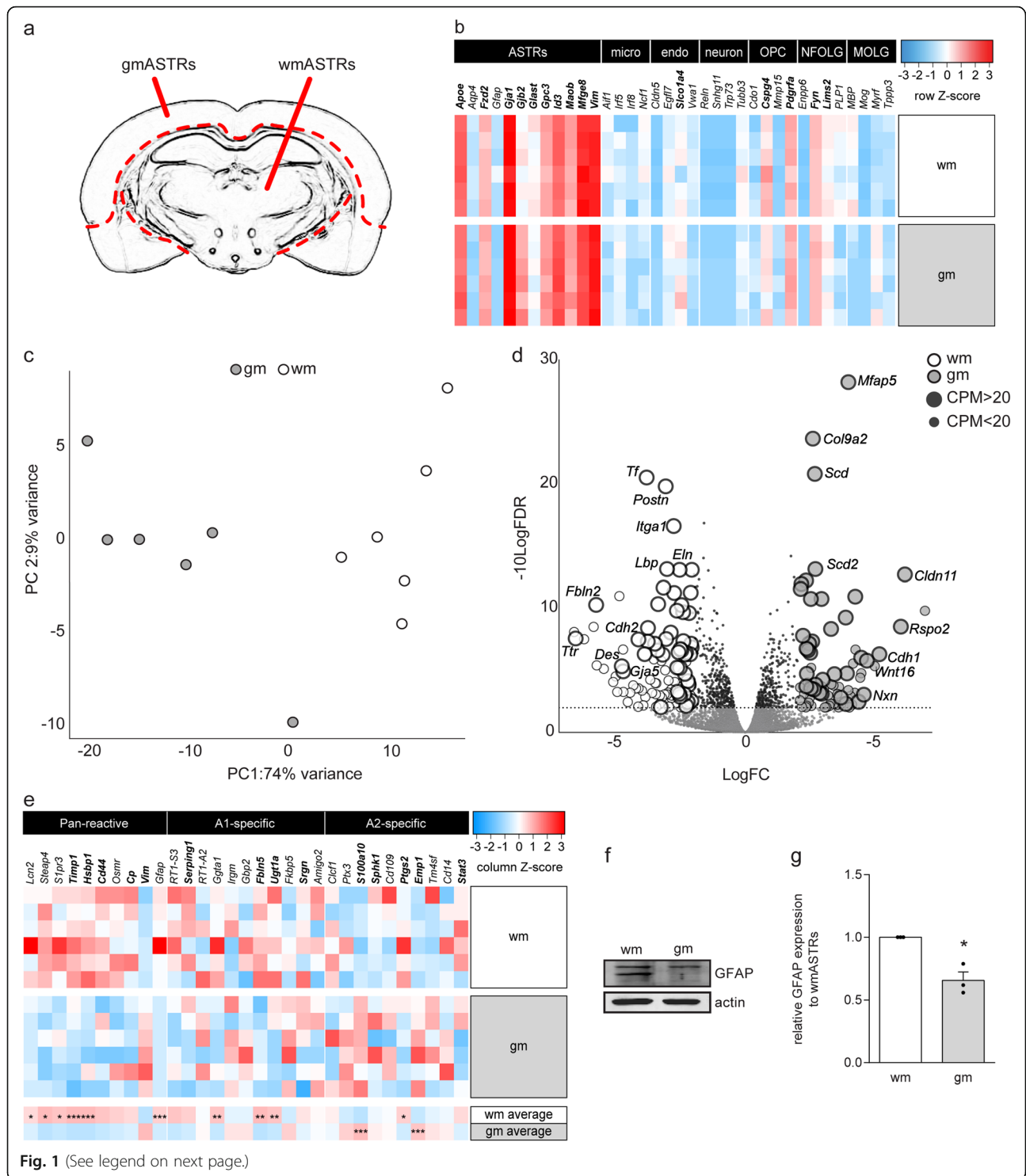
Data are expressed as mean  $\pm$  standard error of the mean (SEM) for at least three independent experiments. When relative values of groups were compared to NCM, no ECM, control ACM, or control ECM coatings,

statistical analysis was performed with a one-sample *t* test by setting the untreated control values at 1 in each independent experiment. In all cases, *p* values of  $< 0.05$ ,  $< 0.01$ , and  $< 0.001$  were considered significant and indicated with \*, \*\*, and \*\*\*, respectively. When values between two groups of the same cell culture preparations (wmACM versus gmACM and wmECM versus gmECM) were compared, statistical significance was assessed using a paired two-sided *t* test. When values between treatment of gmASTRs or wmASTRs on OPC behavior were compared, an unpaired two-sided *t* test was used to assess statistical significance. Here, *p* values of  $< 0.05$ ,  $< 0.01$ , and  $< 0.001$  were considered significant and indicated with #, ##, and ###, respectively. Statistics were performed using GraphPad Prism 6.0. In heatmaps of RNAseq data FDR-values of  $< 0.05$ ,  $< 0.01$ , and  $< 0.001$  were considered significant and indicated with \*, \*\*, \*\*\*.

## Results

### Primary adult wmASTRs and gmASTRs are transcriptionally heterogeneous

Previous findings indicate that remyelination is more efficient in GM lesions than in WM lesions [37, 38, 40, 41]. OLGs depend on support from ASTRs to remyelinate denuded axons [4–8], and as gmASTRs and wmASTRs are morphologically and functionally different [27, 28, 31, 32], we aimed to address whether gmASTRs and wmASTRs distinctly modulate myelination. As cultured neonatal gmASTRs are still considered as (reactive) ASTR progenitors [58, 59], we used an in vitro culture model of ASTRs derived from young adult rat brains [51]. These primary ASTRs exhibit properties like the expression of ASTR markers, glutamate uptake, and responses to injury, that represent their properties in the adult brain [51]. To assess whether primary adult gmASTRs and wmASTRs differ, the transcriptional profiles of ASTRs from the cerebral cortex (GM, referred to as gmASTRs) and non-cortical brain regions (mainly WM, referred to as wmASTRs, but including some deep gmASTRs) were compared after 20 days in culture (Fig. 1a). Analysis of CNS cell type-specific gene expression revealed a high abundance of transcripts of most ASTR-specific genes (e.g., *Vim*, *Mfeg8*, *Gja1*), and relatively low expression of OPC- (e.g., *Cspg4*, *Pdgra*), newly formed OLG- (e.g., *Enpp6*), and mature OLG-specific (e.g., *Mbp*, *Mog*) genes. Genes typically expressed by microglia (e.g. *Irf8*, *Afl*, *Ncf1*), endothelial cells (e.g., *Cldn5*, *Egfl7*, *Vwa1*), and neurons (e.g., *Tubb3*, *Reln*, *Trp73*) also have a low abundance (Fig. 1b). These data indicate that both adult gmASTRs and wmASTRs cultures consisted of highly pure astrocytes. Principal component analysis (PCA) indicated that 74% of the variance between the samples was explained by region of origin of the ASTRs (Fig. 1c), indicating that primary



(See figure on previous page.)

**Fig. 1** Primary adult wmASTRs and gmASTRs are transcriptionally heterogeneous. RNA from six independent cell culture preparations of adult grey matter astrocytes (gmASTRs) and adult white matter ASTRs (wmASTRs), was subjected to 3'-RNA sequencing. **a** Schematic representation of the dissected areas. **b** Heatmap of the logarithm of the gene count per million counts + 1 ( $\log(\text{CPM}+1)$ ) of genes specific for ASTRs, microglia (micro), endothelial cells (endo), neurons (neuron), oligodendrocyte progenitor cells (OPCs), newly formed oligodendrocytes (nfOLGs), and mature oligodendrocytes (mOLGs). Row Z-score represents relative expression of cell type-specific genes compared to each other within one biological sample. Genes with a CPM > 20 are depicted in bold. Note that most ASTR genes are highly expressed within different batches compared to other cell type-specific genes. **c** Principal component analysis (PCA) indicates that 74% of the variation between the samples is explained by their regional origin. **d** A volcano plot displaying all genes. The white dots depict genes more abundantly expressed in wmASTRs, and grey dots display genes more abundantly expressed in gmASTRs (absolute logarithm of fold change ( $\log\text{FC}$ ) > 2,  $\text{FDR} < 0.01$ ). The small black dots are all remaining genes that are identified but not differentially expressed. **e** Heatmap of pan-reactive-, A1-, and A2-specific ASTR markers. Column Z-score represents the relative expression of genes between different samples. Genes with a CPM > 20 are depicted in bold (\* $\text{FDR} < 0.05$ , \*\* $\text{FDR} < 0.01$ , \*\*\* $\text{FDR} < 0.001$ ). Note that several pan-reactive and A1-ASTR-specific genes are more expressed in wmASTRs, while some A2-ASTR-specific genes are more expressed in gmASTRs. **f, g** Western blot analysis of GFAP. A representative image is shown in **f**, and quantification of three independent ASTR culture preparations (black dots) in **g**. Bars represent the relative mean to wmASTRs, which were set to 1 in each independent experiment. Error bar indicates the standard error of the mean. Statistical analyses are performed using column statistics with a one-sample *t* test (\* $p < 0.05$ ) to assess differences between gmASTRs and wmASTRs. Note that GFAP expression is higher in wmASTRs ( $p = 0.038$ )

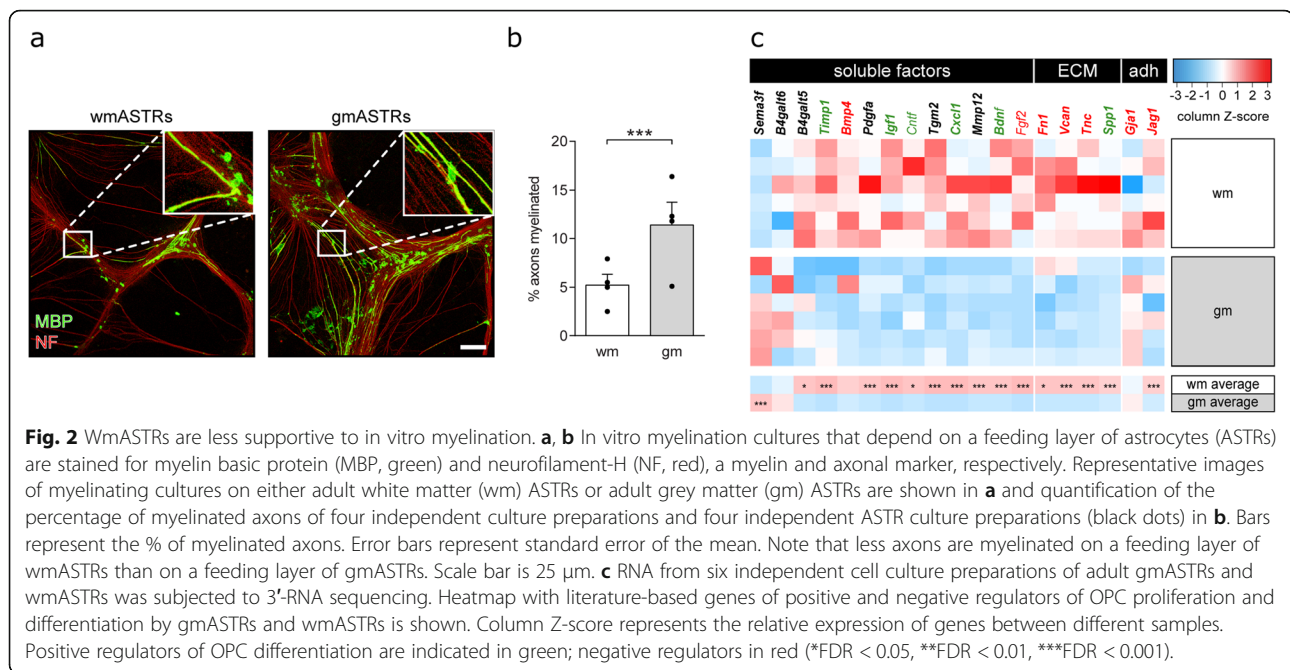
adult gmASTR and wmASTRs were transcriptionally different. Between gmASTR and wmASTRs, 857 genes were differentially expressed ( $\text{FDR} < 0.01$ ), and 183 genes with a  $\log\text{FC} > 2$ . Of these genes, 75 genes were more abundantly expressed in gmASTRs (additional file 1) and 108 genes in wmASTRs (additional file 1). Genes that were more abundantly expressed in wmASTRs include several ECM-related genes (*Fbln2*, *Eln*, *Postn*, *Itga1*), while in gmASTRs, genes involved in lipogenesis (*Scd*, *Scd2*) and Wnt signaling (*Rspo2*, *Wnt16*) were more abundantly expressed. Strikingly, two different members of the cadherin family are oppositely differentially expressed; *Cdh2* encoding for N-cadherin was more abundantly expressed in wmASTRs, while transcripts for *Cdh1* encoding for E-cadherin were more present in gmASTRs (Fig. 1d). We next compared the transcription profiles with the list of marker genes characteristic for reactive ASTRs in general (pan-reactive genes) and marker genes for neurotoxic A1-ASTRs and neuroprotective A2-ASTRs as defined by Liddelow et al [22]. Most pan-reactive ASTR marker genes were more abundantly expressed in primary adult wmASTRs than in primary adult gmASTRs (Fig. 1e, *Lcn2*,  $\text{FDR} = 0.021$ ; *Gfap*, *Timp1*, and *Hspb1*  $\text{FDR} < 0.001$ ). Notably, transcript levels for some A1-ASTR-associated genes were more present in wmASTRs (*Ggta1*  $\text{FDR} = 0.002$ ; *Fbln5*  $\text{FDR} = 0.005$ ; *Ugt1a*  $\text{FDR} = 0.008$ ), while transcripts of two A2-ASTR-associated genes (*SI00a10* and *Emp1*  $\text{FDR} < 0.001$ ) were more abundant in gmASTRs (Fig. 1e). Although *Gfap* mRNA expression was relatively low in both types of ASTRs, GFAP protein was present at detectable levels (Fig. 1f). Consistent with *Gfap* mRNA levels (Fig. 1e), GFAP protein levels were significantly higher in wmASTRs compared to gmASTRs (Fig. 1g), most likely due the low expression of a GFAP splice variant by gmASTRs (Fig. 1f). Notably, although previous profiling studies demonstrated that primary neonatal gmASTRs cultured in the presence of serum induces the

expression of a specific set of genes [59], none of these serum-induced genes were expressed by our primary adult ASTRs. Hence, primary adult wmASTRs and gmASTRs were heterogeneous at the transcription level even upon prolonged time in culture. To assess whether gmASTRs and wmASTRs distinctly modulate myelination efficiency, their ability to regulate in vitro myelination was examined next.

#### Primary adult wmASTRs are less supportive to myelination than primary adult gmASTRs

To study the role of gmASTRs and wmASTRs in myelination efficiency, we made use of an in vitro myelinating system of total embryonic spinal cord cultures that only develop on an ASTR feeding layer [57]. Myelination efficiency was assessed by double labeling of myelin and neurons, using myelin basic protein (MBP) as a marker for myelin, and neurofilament-H (NF) as a marker for neurons. While the axonal density was not significantly different (gmASTRs  $8.3 \pm 2.4\%$ , wmASTRs  $7.1 \pm 1.2\%$ ), the percentage of myelinated axons was higher on a feeding layer of gmASTRs than on a feeding layer of wmASTRs (Fig. 2a, b,  $p = 0.016$ ). This difference in their ability to support in vitro myelination is either a result of wmASTR-derived myelination-inhibiting or gmASTR-derived myelination-stimulating signals. ASTRs can signal to OPCs via secreted soluble factors, such as growth factors and cytokines, via insoluble factors, such as ECM proteins, and via adhesive interactions. The transcriptional profiles uncovered that wmASTRs expressed more transcripts of both positive and negative regulators of OPC proliferation (*Pdgfra*, *Fgf2* [52, 60, 61]) and OPC maturation (*Bmp4*, *Cntf*, *Timp1*, *Fn*, *Vcan*, *Tnc*, *Jag1*, *Igf1*, *Gja1*, *Tgm2* [62–71]) than gmASTRs (Fig. 2c). To determine whether wmASTRs and gmASTRs differentially support OPC behavior by a difference in secreted factors, the effect of ASTR-conditioned medium (ACM) of either ASTR on OPC proliferation, metabolic activity,



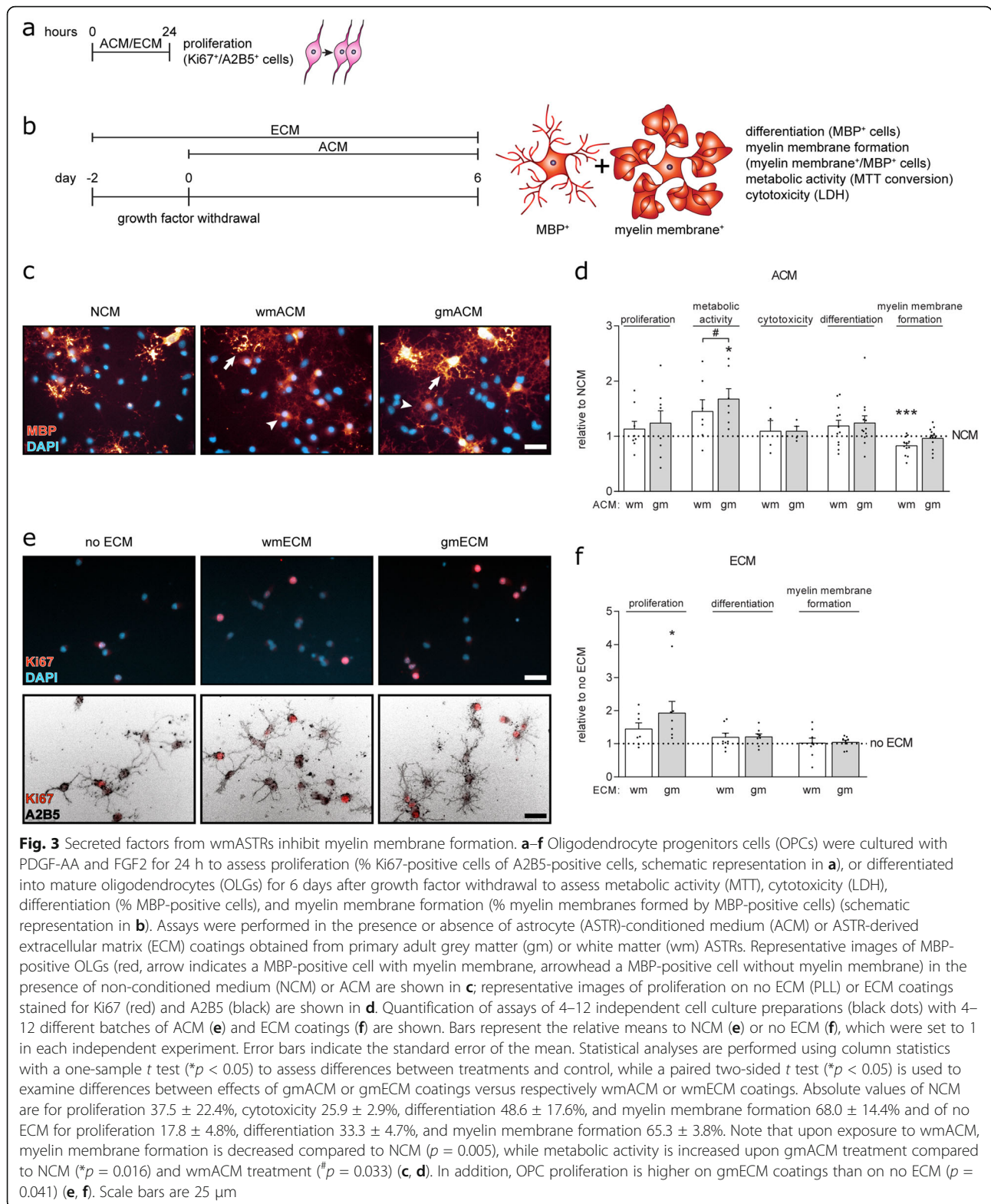


and/or maturation was examined (Fig. 3a–c). OPC proliferation, as assessed by the number of Ki67-positive cells of A2B5-positive OPCs, was similar when OPCs were exposed to gmACM, wmACM, and non-conditioned medium (NCM) (Fig. 3d). After 6 days of differentiation, the metabolic activity, as assessed by an MTT assay, was increased upon exposure to gmACM compared to both wmACM and NCM (Fig. 3d, gmACM versus NCM  $p = 0.016$ ; gmACM versus wmACM  $p = 0.033$ ). Remarkably, ACM from neither ASTR was toxic to the cells (Fig. 3d), despite wmASTRs more abundantly expressing specific genes for neurotoxic A1-ASTRs (Fig. 1e). In addition, while the percentage of MBP-positive OLGs, reflecting their differentiation, remained similar, the percentage of MBP-positive OLGs that elaborate myelin membranes was significantly decreased in the presence of wmACM compared to NCM (Fig. 3c, d,  $p = 0.005$ ). Exposure to gmACM did not affect OPC differentiation or myelin membrane formation (Fig. 3d). To examine the effect of ASTR-derived ECM on OPC behavior, OPCs were cultured on coatings of gmECM or wmECM. OPC proliferation was significantly increased when OPCs were plated on a gmECM coating compared to an inert PLL-coating (no ECM, Fig. 3e, f,  $p = 0.041$ ). OPC proliferation was not affected by a wmECM coating (Fig. 3d–f). OPC differentiation and myelin membrane formation were not altered when plated on either gmECM or wmECM coatings compared to a PLL-coating (Fig. 3f). Hence, these findings revealed that wmASTRs were less supportive to in vitro myelination than gmASTRs, which may be the result of an inhibitory effect of wmASTR-derived secreted factor(s) that

preclude myelin membrane formation and/or a stimulatory effect of gmASTR-deposited ECM on OPC proliferation. To obtain more insight into the gene networks that drive the distinct regulation of myelination by gmASTRs and wmASTRs, a weighted gene co-expression network analysis (WGCNA) was performed.

#### Gene co-expression networks differ between primary adult wmASTRs and gmASTRs

WGCNA is a powerful method that determines correlated changes in gene expression allowing for the identification of modules of similarly expressed gene networks that represent biological functions and regulatory mechanisms [72]. WGCNA analysis identified 14 modules of highly connected genes with similar expression pattern (Fig. S1a, b, additional file 2). The correlation between each Module Eigengene (ME) and the trait region (gmASTRs and wmASTRs) revealed that the ME<sub>royalblue</sub> and ME<sub>darkgrey</sub> modules were significantly and differentially correlated with region across the biological replicates of gmASTR and wmASTR cell culture preparations (Fig. S1b–d, additional file 2). Module ME<sub>royalblue</sub>, consisting of 844 genes, was positively correlated with gmASTRs ( $p < 0.001$ ) and negatively correlated with wmASTRs (Fig. S1b, c, additional file 2). To retrieve the biological processes the genes of this module are involved in, gene ontology (GO) annotation analysis was performed. Many genes represented in the ME<sub>royalblue</sub> module were related to “cell division” (Fig. 4a). Additionally, genes that are enriched in the ME<sub>royalblue</sub> module were related to GO terms “sterol biosynthetic process,” “steroid biosynthetic process,” “cholesterol



biosynthetic process,” and “secondary alcohol biosynthetic process” (Fig. 4a). An interaction network of the genes in these biosynthetic processes demonstrated that

some of these genes are shared between multiple GO terms (Fig. 4b). A heatmap of relevant sterol, steroid, and cholesterol biosynthesis genes (Fig. S2, additional



expressed in wmASTRs than in gmASTRs. These more abundant genes encode for ECM-core proteins (e.g., *Mfeg8*, *Ctgf*, *Spp1*, *Ltbp1*) that are mainly matricellular proteins, and ECM-affiliated proteins (e.g., *Bdnf*, *Hbegf*, *Mmp12*, *Ccl2*, *Ccl7*), which are proteins that regulate ECM remodeling or secreted factors that associated with the ECM. Notably, transcripts of *Sema3f*, an OPC attractant, were more present in gmASTRs than in wmASTRs (Fig. 4d). Several ECM genes that were more abundantly expressed in primary adult wmASTRs were associated with pathways previously implicated in OPC maturation and/or remyelination failure (*Ctgf*, *Tnc*, *Spp1* [21, 67, 77–79]) and/or expressed in reactive ASTRs in WM MS lesions (*Mfeg8*, *Tnc*, *Spp1* [34, 77, 80, 81]), and may relate to the more reactive ASTR profile of primary adult wmASTRs (Fig. 1). Hence, the regulatory mechanisms that may account for the higher in vitro myelination potential of OLGs in the presence of gmASTRs, are more cholesterol biosynthesis in gmASTRs and increased deposition of matrisome constituents by wmASTRs. The different identities of gmASTRs and wmASTRs may result in distinct and specific responses toward inflammatory mediators that are increased upon injury. As demyelination involves innate immune activation, and as TLR3 and TLR4 are prominently present on reactive ASTRs in WM MS lesions [13, 49], we next examined whether gmASTRs and wmASTRs may respond differently to TLR3 and/or TLR4 agonists and as a consequence distinctly modulate OPC behavior.

#### Adult gmASTRs and wmASTRs responding to TLR4 agonist LPS decrease myelin membrane formation

As TLR3 and TLR4 agonists interfered with the development of neurons, OPCs, and OLGs in the in vitro myelinating cultures, we were not able to examine the role of ASTR reactivity on in vitro myelination. Therefore, to assess whether gmASTRs and wmASTRs differently respond to TLR4 ligands, the effect of TLR4 agonist LPS on primary ASTRs and their ability to modulate OPC behavior via secreted factors (ACM) or coatings of deposited ECM components was determined. Secreted factors from LPS-treated wmASTRs and gmASTRs did not significantly change OPC proliferation (Fig. 5a) and differentiation (Fig. 5c). Secreted factors from both LPS-treated gmASTRs and wmASTRs markedly inhibited myelin membrane formation by 40–50% compared to secreted factors from their respective untreated ASTRs (Fig. 5d, gmACM  $p = 0.020$ , wmACM  $p = 0.003$ ). This is accompanied by a significant decrease in metabolic activity by 30–40% upon wmACM treatment (Fig. 5b wmACM  $p = 0.039$ ), and a reproducible, but not significant decrease upon gmACM treatment (Fig. 5b). ECM coatings of LPS-treated gmASTRs or wmASTRs did not significantly alter OPC proliferation (Fig. 5a),

differentiation (Fig. 5b), or myelin membrane formation (Fig. 5c). Hence, our findings demonstrate that LPS-treated wmASTRs and gmASTRs similarly modulate OPC behavior by secreting factors that reduced the percentage of MBP-positive OLGs that form myelin membranes.

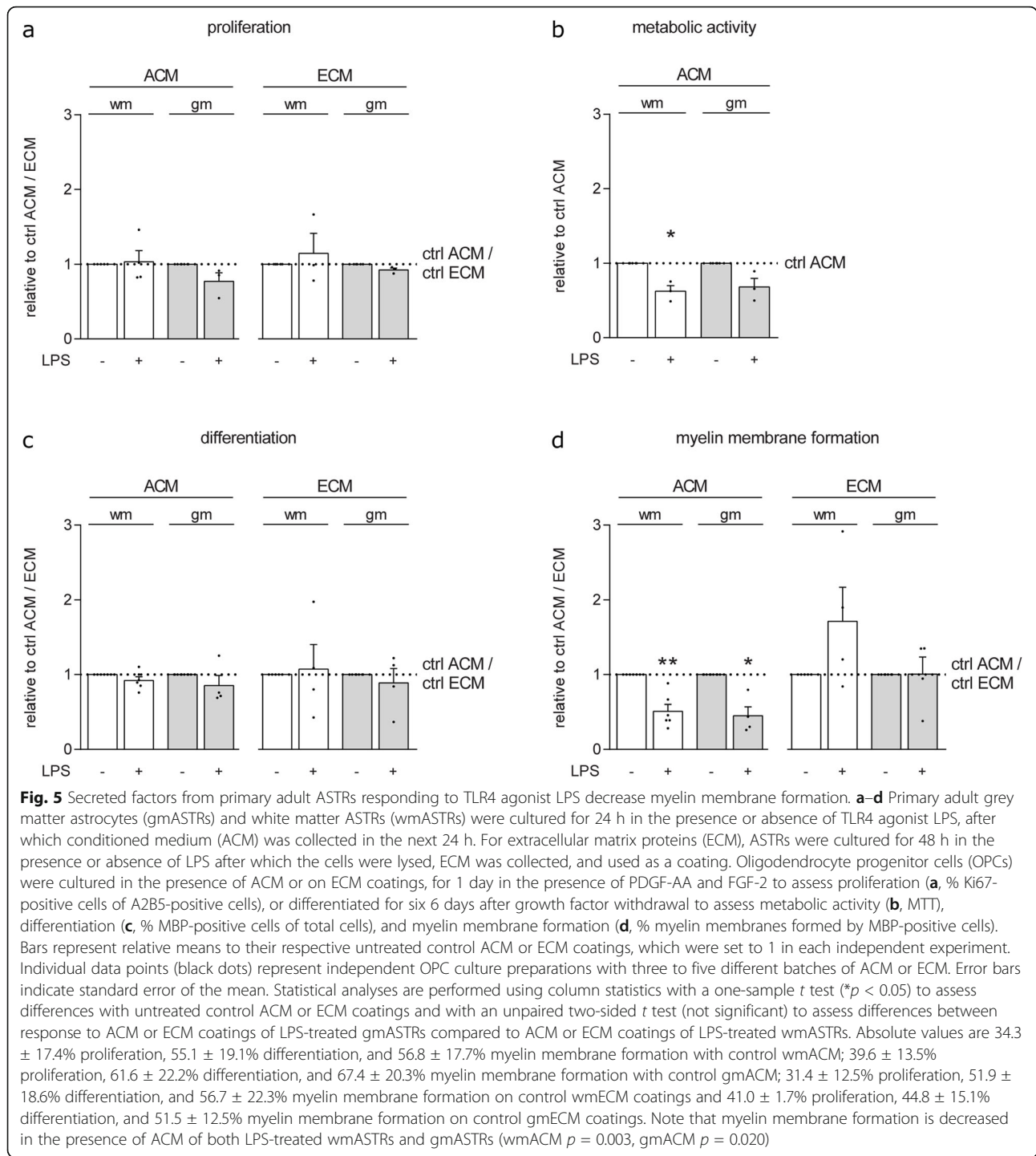
#### Adult gmASTRs and wmASTRs responding to TLR3 agonist Poly(I:C) distinctly modulate OPC proliferation and myelin membrane formation

To assess whether gmASTRs and wmASTRs differently respond to TLR3 ligands, the effect of TLR3 agonist Poly(I:C) on ASTRs, and their ability to modulate OPC behavior was determined next. Secreted factors from Poly(I:C)-treated wmASTRs, but not from Poly(I:C)-treated gmASTRs, decreased OPC proliferation by approximately 18% compared to their respective untreated control ASTRs (Fig. 6a,  $p = 0.027$ ). In contrast, OPC proliferation was increased when plated on ECM coatings of Poly(I:C)-treated wmASTRs compared to ECM coatings of untreated control wmASTRs (Fig. 6a,  $p = 0.012$ ) and ECM coatings of Poly(I:C)-treated gmASTRs (Fig. 6a,  $p = 0.002$ ). ACM of Poly(I:C)-treated gmASTRs reproducibly and significantly reduced myelin membrane formation by approx. 20% compared to untreated gmACM (Fig. 6d,  $p = 0.016$ ). By contrast, myelin membrane formation was unchanged when OPCs were exposed to ACM of Poly(I:C)-treated wmASTRs (Fig. 5d). Secreted factors or ECM coatings from Poly(I:C)-treated gmASTRs or wmASTRs hardly affected the metabolic activity of OLGs and OPC differentiation compared to secreted factors or ECM coatings from their respective untreated control ASTRs (Fig. 6b, c). These data demonstrate that Poly(I:C) treatment of primary adult gmASTR and wmASTRs results in a modest but distinct modulation of OPC proliferation and myelin membrane formation. As secreted factors from Poly(I:C)-treated gmASTRs reduced myelin membrane formation, this may indicate that Poly(I:C)-treated gmASTRs are less supportive to myelination than untreated gmASTRs.

#### Discussion

ASTRs support myelination during development and are indispensable for successful remyelination upon demyelination [2, 3, 17]. As remyelination is more efficient in GM lesions than in WM (MS) lesions [37, 38, 40, 41, 82], we aimed here to address whether the distinct modulation of myelination is a reflection of heterogeneity between gmASTRs and wmASTRs. Our findings demonstrate that primary adult wmASTRs were less supportive toward in vitro myelination than primary adult gmASTRs. Transcriptional profiling demonstrated that even after prolonged time in culture, adult gmASTRs and adult wmASTRs have a distinct



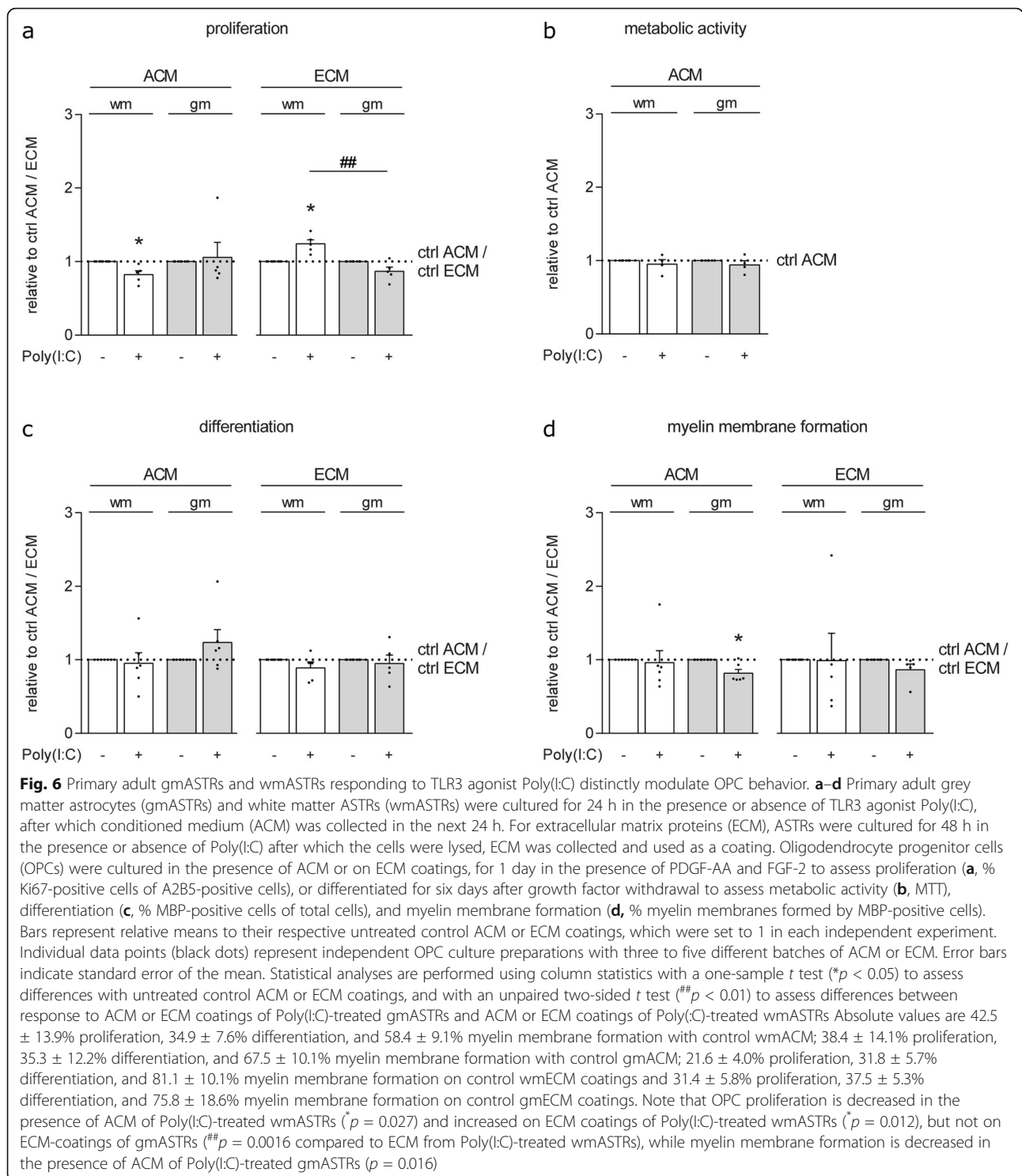


transcriptional profile, which may underlie their difference in modulating *in vitro* myelination. Moreover, when exposed to TLR4 agonist LPS, secreted factors of both gmASTRs and wmASTRs markedly inhibited myelin membrane formation, while TLR3 agonist Poly(I:C)-treated gmASTRs and wmASTRs elicited modest but distinct responses in OPC proliferation and myelin

membrane formation. Hence, our findings indicate that pre-existing regional heterogeneity in ASTRs may contribute to differences in remyelination efficiency in demyelinated GM and WM.

Our findings demonstrate that more axons were myelinated on a feeding layer of primary adult gmASTRs than on a feeding layer of primary adult wmASTRs. As





secreted factors from wmASTRs, but not gmASTRs, decreased membrane formation, it is tempting to suggest that wmASTRs were less supportive to myelination. The transcriptional data provided insight into differences in gene expression of signaling molecules in gmASTRs and wmASTRs that are relevant for myelination and

remyelination. Analysis of literature-based modulators of OPC behavior revealed that wmASTRs were equipped with higher transcript levels of genes encoding for signaling molecules that either positively or negatively modulate OPC proliferation and differentiation [52, 60, 61]. These signaling molecules were soluble (*Bmp4*, *Fgf2*,

*Cntf*, *Pdgfra* [52, 60, 61, 64, 65]), ECM-derived (*Fn1*, *Vcan*, *Tnc*, *Spp1* [62, 67, 71, 75, 77]) or adhesion-dependent (*Jag1*). Likely, it reflects the *net* effect of these factors that made wmASTRs less supportive to myelination than gmASTRs in our in vitro myelinating culture system. Also, wmASTRs were more reactive than gmASTRs, and expressed more transcripts of several A1-ASTR-specific genes, while A2-ASTRs-specific genes were more abundantly expressed in gmASTRs. This is consistent with a recent single-nucleus RNA sequencing study of human control brain tissue that demonstrated transcriptional heterogeneity between human gmASTRs and wmASTRs [29], including a more reactive profile of wmASTRs compared to gmASTRs [29]. Hence, our primary adult gmASTRs and wmASTRs maintain some properties that are also observed in GM and WM areas.

In addition to wmASTRs being less supportive, gmASTRs may promote in vitro myelination. ECM components deposited by gmASTRs increased OPC proliferation, and as a higher density of OPCs augments myelination [83], enhanced proliferation may contribute to the increased in vitro myelination on gmASTRs. Also, an unbiased gene co-expression network analysis identified a gene module, which positively correlated with gmASTRs and negatively with wmASTRs that contained genes relevant to cell division and cholesterol biosynthesis. Cholesterol is a major constituent of myelin membranes [7], and in the adult brain mainly synthesized by ASTRs [4, 84]. Cholesterol enhances OPC differentiation [7, 73] and is the only known indispensable integral lipid in myelin of which its availability is rate-limiting for myelin growth [7]. Therefore, gmASTRs may supply more cholesterol to developing OLGs, which benefits myelination [4, 7, 73, 85]. Indeed, we recently demonstrated that neonatal gmASTRs efflux more cholesterol than neonatal wmASTRs [85]. Also, genes involved in cholesterol biosynthesis are down-regulated in MS wmASTRs compared to ASTRs in healthy control WM [33], which may limit remyelination in WM lesions.

WGCNA further revealed that a gene module containing genes encoding for proteins that are relevant for ECM production and modification, i.e., the matrisome [86] was significantly correlated with wmASTRs. ASTRs are known to play an essential role in transient ECM remodeling, which is important for successful remyelination upon toxin-induced demyelination [75, 87–89]. In addition, increased expression of ECM proteins usually marks ASTR reactivity [12, 90]. Therefore, the enhanced expression of genes that are related to the matrisome is likely part of the more reactive phenotype of wmASTRs. Most of the matrisome-core enriched genes were extracellular proteins (*Thbs2*, *Postn*, *Ctgf*, *Fbln2*, *Spp1*), which are non-structural ECM proteins that support matrix

fibrillogenesis and/or that have important functions in tissue repair [91]. These proteins may both influence matrix formation and signals to OPCs by modulating cell functioning via interaction with cell-surface receptors and structural ECM proteins, such as fibronectin and proteoglycans that are present in demyelinated areas [75, 88]. Thus, the effect of ECM coatings on OPC behavior presented in the present study are likely underestimated, as ECM coatings do not reflect all properties of the ECM, such as the original topological ECM architecture and stiffness. Indeed, the stiffness of the ECM influences OPC behavior; a stiff matrix favors OPC proliferation and initial differentiation and myelination is supported by a relatively soft matrix [6]. Hence, a higher abundance of ECM-related genes in wmASTRs may contribute to less efficient remyelination in WM lesions compared to GM lesions. This is indeed observed in leukocortical MS lesions, where ECM protein hyaluronan, an inhibitor of OPC differentiation [92], and its receptor CD44, are significantly increased in the WM, but not in the GM part of leukocortical lesions [41]. Also, wmASTRs form more remyelination-impairing fibronectin aggregates than gmASTRs [93], and fibronectin expression is increased in marmoset EAE WM, but not GM lesions [94]. Thus, interference with the wmASTR-mediated role in ECM remodeling may prove a valuable target for the enhancement of remyelination in WM MS lesions.

Diversity between wmASTRs and gmASTRs was also observed in their modulation of OPC behavior in response to TLR3 agonist Poly(I:C). More specifically, secreted factors of Poly(I:C)-treated gmASTRs, but not of Poly(I:C)-treated wmASTRs, decreased myelin membrane formation compared to secreted factors from their respective untreated ASTRs. Previous studies revealed that exposure to Poly(I:C) in rodent ASTRs induced the expression of both pro-inflammatory mediators that are linked to A1-ASTRs, and inflammatory mediators that are secreted by A2-ASTRs [22, 95]. In line with this reasoning, Poly(I:C) may distinctly interfere with gmASTR and wmASTR reactive subtypes. ASTR reactivity is also reflected in alterations in ECM remodeling, and OPC proliferation in response to ECM coatings of Poly(I:C)-treated wmASTRs significantly differed from ECM coatings of Poly(I:C)-treated gmASTRs. Thus, intrinsic differences between gmASTRs and wmASTRs may control remyelination differently by reacting in a region-specific manner to demyelinating injury. This is consistent with changes in gene expression between ASTRs from different regions in an animal model for MS [33], as well as differential responses of ASTRs isolated from different regions in vitro [32]. On the other hand, secreted factors from both TLR4 agonist LPS-treated gmASTRs and wmASTRs reduced myelin membrane

formation. Therefore, the ASTR responses in GM and WM lesions may not only depend on the pre-existing heterogeneity of gmASTRs and wmASTRs and their differential response to the same type of inflammatory mediator, but may also relate to the local inflammatory context, which is different in GM and WM lesions [19, 41, 46, 96, 97].

## Conclusions

Taken together, primary adult gmASTRs and wmASTRs are diverse cell types, and heterogeneous at the transcriptional and GFAP protein level. They differ in their ability to modulate *in vitro* myelination and in their response to TLR3 agonists. As wmASTRs are intrinsically more reactive and less supportive to *in vitro* myelination, this may contribute to the more efficient remyelination observed in GM lesions compared to WM lesions. Identification of secreted or ECM-related factors that differentially modulate remyelination efficiency may identify new region-specific ASTR-targeted therapies for MS. In addition, validation of therapeutic tools for remyelination should take potential differences between gmASTRs and wmASTRs into account.

## Supplementary Information

The online version contains supplementary material available at <https://doi.org/10.1186/s12974-020-02045-3>.

**Additional file 1.** List of genes with CPMs, fold changes and p-values.

**Additional file 2: Figure S1.** Weighted gene co-expression network analysis on adult gmASTRs and wmASTRs. RNA from six independent cell culture preparations of adult grey matter astrocytes (gmASTRs) and adult white matter ASTRs (wmASTRs) was subjected to 3'-RNA sequencing and a weighted gene co-expression network analysis (WGCNA). **a** Cluster dendrogram of modules that contain similarly expressed genes. Each color at the bottom represents a defined module. **b** Heatmap of the correlation coefficient of the 14 modules of genes defined by WGCNA. The correlation between each Module Eigengene (ME) and the traits region and sample were calculated. The corresponding p-values is indicated. ME<sub>royalblue</sub> and ME<sub>darkgrey</sub> are significantly and differentially correlated with region. **c** The ME<sub>royalblue</sub> gene module is positively correlated with gmASTRs and negatively with wmASTRs. **d** The ME<sub>darkgrey</sub> gene module is positively correlated with wmASTRs and negatively with gmASTRs.

**Additional file 3: Figure S2.** Cholesterol biosynthesis genes are more abundantly expressed in grey matter astrocytes. RNA from six independent cell culture preparations of adult grey matter astrocytes (gmASTRs) and adult white matter ASTRs (wmASTRs) was subjected to 3'-RNA sequencing. Heatmap of identified sterol, steroid, and cholesterol biosynthesis genes in the ME<sub>royalblue</sub> cluster from the weighted gene co-expression network analysis (WGCNA) in gmASTRs and wmASTRs is shown (Fig. 4a, b, Fig. S1, Additional file 2). Column Z-score represents the relative expression of genes between different samples. Genes with a CPM > 20 are depicted in bold. Note that most genes encoding for cholesterol, steroid and sterol biosynthesis are more abundantly expressed in gmASTRs (\*FDR < 0.05, \*\*FDR < 0.01, \*\*\*FDR < 0.001).

## Abbreviations

ACM: Astrocyte-conditioned medium; ASTR: Astrocyte; BSA: Bovine serum albumin; CNS: Central nervous system; ECM: Extracellular matrix; FBS: Fetal bovine serum; GM: Grey matter; FGF2: Fibroblast growth factor-2; GO: Gene ontology; LDH: Lactate dehydrogenase; logFC: Logarithm of the fold change;

LPS: Lipopolysaccharide; MBP: Myelin basic protein; MS: Multiple sclerosis; MTT: 3-(4,5-Dimethyl-2-thiazolyl)-2,5-diphenyl-2H-tetrazolium bromide; NCM: Non-conditioned medium; NF: Neurofilament-H; OPC: Oligodendrocyte progenitor cell; OLG: Oligodendrocyte; PCA: Principal component analysis; PFA: Paraformaldehyde; PLL: Poly-L-lysine; Poly(I:C): Polyinosine-polycytidylic acid; PVDF: Polyvinylidene fluoride; SEM: Standard error of the mean; TLR: Toll-like receptor; WGCNA: Weighted gene co-expression network analysis; WM: White matter

## Acknowledgements

We would like to thank Bojana Mikus and Dr. Arend Sikkema for optimizing the primary adult astrocyte cultures and Dennis Lentferink for proofreading the manuscript.

## Authors' contributions

ILW and WB designed the project. WB supervised the study. ILW, MLD, PV, JJBB, and WB performed the experiments and acquired the data. ILW and MLD produced the figures and carried out the statistical analysis. ILW wrote the draft manuscript text and WB and BJL critically reviewed and revised the manuscript text. All authors read and approved the manuscript.

## Funding

Work in the Baron Laboratory is supported by grants from the Dutch MS Research Foundation (Stichting MS Research). ILW is a recipient of a personal PhD fellowship from the Graduate School of Medical Sciences, University of Groningen, the Netherlands.

## Availability of data and materials

The RNA-Seq data supporting the conclusions of this article are available in the Gene Expression Omnibus (GEO): GSE155866

## Ethics approval

Experimental animal protocols for primary cell and spinal cord cultures were approved by the Animal Ethics Committee of the University of Groningen (the Netherlands). All methods were carried out in accordance with the European Directive (2010/63/EU) on the protection of animals used for scientific purposes.

## Consent for publication

Not applicable.

## Competing interests

There are no competing interests.

## Author details

<sup>1</sup>Biomedical Sciences of Cells & Systems, Section Molecular Neurobiology, University of Groningen, University Medical Center Groningen, A. Deusinglaan 1, 9713, AV, Groningen, the Netherlands. <sup>2</sup>Department of Genetics, University of Groningen, University Medical Center Groningen, Groningen, the Netherlands.

Received: 23 August 2020 Accepted: 25 November 2020

Published online: 11 December 2020

## References

- Franklin RJM, French-Constant C. Remyelination in the CNS: from biology to therapy. *Nat Rev Neurosci*. 2008;9:839–55. <https://doi.org/10.1038/nrn2480>.
- Kiray H, Lindsay SL, Hosseinzadeh S, Barnett SC. The multifaceted role of astrocytes in regulating myelination. *Exp Neurol*. 2016;283:541–9. <https://doi.org/10.1016/j.expneurol.2016.03.009>.
- Lundgaard I, Osório MJ, Kress BT, Sanggaard S, Nedergaard M. White matter astrocytes in health and disease. *Neuroscience*. 2014;276:161–73. <https://doi.org/10.1016/j.neuroscience.2013.10.050>.
- Camargo N, Goudriaan A, van Deijk A-LF, Otte WM, Brouwers JF, Lodder H, et al. Oligodendroglial myelination requires astrocyte-derived lipids. *Simons M, editor. PLoS Biol*. 2017;15:e1002605. <https://doi.org/10.1371/journal.pbio.1002605>.
- Baron W, Bijlard M, Nomden A, de Jonge JC, Teunissen CE, Hoekstra D. Sulfatide-mediated control of extracellular matrix-dependent oligodendrocyte maturation. *Glia*. 2014;62:927–42. <https://doi.org/10.1002/glia.22650>.

6. Urbanski MM, Kingsbury L, Moussouros D, Kassim I, Mehjabeen S, Paknejad N, et al. Myelinating glia differentiation is regulated by extracellular matrix elasticity. *Sci Rep*. 2016;6:33751. <https://doi.org/10.1038/srep33751>.
7. Saher G, Brügger B, Lappe-Siefke C, Möbius W, Tozawa R, Wehr MC, et al. High cholesterol level is essential for myelin membrane growth. *Nat Neurosci*. 2005;8:468–75. <https://doi.org/10.1038/nn1426>.
8. van Meeteren ME, Baron W, Beermann C, Dijkstra CD, van Tol EAF. Polyunsaturated fatty acid supplementation stimulates differentiation of oligodendroglia cells. *Dev Neurosci*. 2006;28:196–208. <https://doi.org/10.1159/000091917>.
9. Carpentier PA, Duncan DS, Miller SD. Glial toll-like receptor signaling in central nervous system infection and autoimmunity. *Brain Behav Immun*. 2008;22:140–7. <https://doi.org/10.1016/j.bbi.2007.08.011>.
10. Kielian T. Toll-like receptors in central nervous system glial inflammation and homeostasis. *J Neurosci Res*. 2006;83:711–30. <https://doi.org/10.1002/jnr.20767>.
11. Larsen PH, Holm TH, Owens T. Toll-like receptors in brain development and homeostasis. *Sci STKE*. 2007;2007:pe47. <https://doi.org/10.1126/stke.4022007pe47>.
12. Sofroniew MV, Vinters HV. Astrocytes: biology and pathology. *Acta Neuropathol*. 2010;119:7–35. <https://doi.org/10.1007/s00401-009-0619-8>.
13. Bsibsi M, Ravid R, Gveric D, van Noort JM. Broad expression of toll-like receptors in the human central nervous system. *J Neuropathol Exp Neurol*. 2002;61:1013–21. <https://doi.org/10.1093/jnen/61.11.1013>.
14. Clarke LE, Liddel SA, Chakraborty C, Münch AE, Heiman M, Barres BA. Normal aging induces A1-like astrocyte reactivity. *Proc Natl Acad Sci*. 2018;115:E1896–905. <https://doi.org/10.1073/pnas.1800165115>.
15. Kamermans A, Planting KE, Jalink K, van Horssen J, de Vries HE. Reactive astrocytes in multiple sclerosis impair neuronal outgrowth through TRPM7-mediated chondroitin sulfate proteoglycan production. *Glia*. 2019;97:68–77. <https://doi.org/10.1002/glia.23526>.
16. Clarner T, Diederichs F, Berger K, Dencke B, Gan L, van der Valk P, et al. Myelin debris regulates inflammatory responses in an experimental demyelination animal model and multiple sclerosis lesions. *Glia*. 2012;60:1468–80. <https://doi.org/10.1002/glia.22367>.
17. Skripuletz T, Hackstette D, Bauer K, Gudi V, Pul R, Voss E, et al. Astrocytes regulate myelin clearance through recruitment of microglia during cuprizone-induced demyelination. *Brain*. 2013;136:147–67. <https://doi.org/10.1093/brain/awt262>.
18. Park C, Ponath G, Levine-Ritterman M, Bull E, Swanson EC, De Jager PL, et al. The landscape of myeloid and astrocyte phenotypes in acute multiple sclerosis lesions. *Acta Neuropathol Commun*. 2019;7:130. <https://doi.org/10.1186/s40478-019-0779-2>.
19. Gudi V, Gingele S, Skripuletz T, Stangel M. Glial response during cuprizone-induced de- and remyelination in the CNS: lessons learned. *Front Cell Neurosci*. 2014;8:73. <https://doi.org/10.3389/fncel.2014.00073>.
20. Nair A, Frederick TJ, Miller SD. Astrocytes in multiple sclerosis: a product of their environment. *Cell Mol Life Sci*. 2008;65:2702–20. <https://doi.org/10.1007/s00018-008-8059-5>.
21. Nash B, Thomson CE, Linington C, Arthur AT, McClure JD, McBride MW, et al. Functional duality of astrocytes in myelination. *J Neurosci*. 2011;31:13028–38. <https://doi.org/10.1523/JNEUROSCI.1449-11.2011>.
22. Liddel SA, Guttenplan KA, Clarke LE, Bennett FC, Bohlen CJ, Schirmer L, et al. Neurotoxic reactive astrocytes are induced by activated microglia. *Nature*. 2017;541:481–7. <https://doi.org/10.1038/nature21029>.
23. Liddel SA, Barres BA. Reactive astrocytes: production, function, and therapeutic potential. *Immunity*. 2017;1:957–67. <https://doi.org/10.1016/j.immuni.2017.06.006>.
24. Schitine C, Nogaroli L, Costa MR, Hedin-Pereira C. Astrocyte heterogeneity in the brain: from development to disease. *Front Cell Neurosci*. 2015;9:76. <https://doi.org/10.3389/fncel.2015.00076>.
25. Matyash V, Kettenmann H. Heterogeneity in astrocyte morphology and physiology. *Brain Res Rev*. 2010;63:2–10. <https://doi.org/10.1016/j.brainresrev.2009.12.001>.
26. John Lin C-C, Yu K, Hatcher A, Huang T-W, Lee HK, Carlson J, et al. Identification of diverse astrocyte populations and their malignant analogs. *Nat Neurosci*. 2017;20:396–405. <https://doi.org/10.1038/nn.4493>.
27. Oberheim NA, Goldman SA, Nedergaard M. Heterogeneity of astrocytic form and function. In: Milner R, editor. *Methods Mol Biol*. 2012;1:23–45. [https://doi.org/10.1007/978-1-61779-452-0\\_3](https://doi.org/10.1007/978-1-61779-452-0_3).
28. Oberheim NA, Takano T, Han X, He W, Lin JHC, Wang F, et al. Uniquely hominid features of adult human astrocytes. *J Neurosci*. 2009;29:3276–87. <https://doi.org/10.1523/JNEUROSCI.4707-08.2009>.
29. Schirmer L, Velmeshev D, Holmqvist S, Kaufmann M, Werneburg S, Jung D, et al. Neuronal vulnerability and multilineage diversity in multiple sclerosis. *Nature*. 2019;573:75–82. <https://doi.org/10.1038/s41586-019-1404-z>.
30. Werkman IL, Lentferink DH, Baron W. Macrogial diversity: white and grey areas and relevance to remyelination. *Cell Mol Life Sci*. 2020. <https://doi.org/10.1007/s00018-020-03586-9>.
31. Miller R, Raff M. Fibrous and protoplasmic astrocytes are biochemically and developmentally distinct. *J Neurosci*. 1984;4:585–92. <https://doi.org/10.1523/JNEUROSCI.04-02-00585.1984>.
32. Goursaud S, Kozlova EN, Maloteaux J-M, Hermans E. Cultured astrocytes derived from corpus callosum or cortical grey matter show distinct glutamate handling properties. *J Neurochem*. 2009;108:1442–52. <https://doi.org/10.1111/j.1471-4159.2009.05889.x>.
33. Itoh N, Itoh Y, Tassoni A, Ren E, Kaito M, Ohno A, et al. Cell-specific and region-specific transcriptomics in the multiple sclerosis model: focus on astrocytes. *Proc Natl Acad Sci*. 2018;115:E302–9. <https://doi.org/10.1073/pnas.1716032115>.
34. Zhang Y, Chen K, Sloan SA, Bennett ML, Scholze AR, O’Keefe S, et al. An RNA-sequencing transcriptome and splicing database of glia, neurons, and vascular cells of the cerebral cortex. *J Neurosci*. 2014;34:11929–47. <https://doi.org/10.1523/JNEUROSCI.1860-14.2014>.
35. Batiuk MY, Martirosyan A, Wahis J, de Vin F, Marneffe C, Kusserow C, et al. Identification of region-specific astrocyte subtypes at single cell resolution. *Nat Commun*. 2020;11:1–15. <https://doi.org/10.1038/s41467-019-14198-8>.
36. Emsley JG, Macklis JD. Astroglial heterogeneity closely reflects the neuronal-defined anatomy of the adult murine CNS. *Neuron Glia Biol*. 2006;2:175–86. <https://doi.org/10.1017/S1740925X06000202>.
37. Bai CB, Sun S, Roholt A, Benson E, Edberg D, Medicetty S, et al. A mouse model for testing remyelinating therapies. *Exp Neurol*. 2016;283:330–40. <https://doi.org/10.1016/j.jepneuro.2016.06.033>.
38. Gudi V, Moharreggh-Khiabani D, Skripuletz T, Koutsoudaki PN, Kotsiari A, Skuljec J, et al. Regional differences between grey and white matter in cuprizone induced demyelination. *Brain Res*. 2009;1283:127–38. <https://doi.org/10.1016/j.brainres.2009.06.005>.
39. Buschmann JP, Berger K, Awad H, Clarner T, Beyer C, Kipp M. Inflammatory response and chemokine expression in the white matter corpus callosum and gray matter cortex region during cuprizone-induced demyelination. *J Mol Neurosci*. 2012;48:66–76. <https://doi.org/10.1007/s12031-012-9773-x>.
40. Strijbis EMM, Kooi E-J, van der Valk P, Geurts JJG. Cortical remyelination is heterogeneous in multiple sclerosis. *J Neuropathol Exp Neurol*. 2017;76:390–401. <https://doi.org/10.1093/jnen/nlx023>.
41. Chang A, Staugaitis SM, Dutta R, Batt CE, Easley KE, Chomyk AM, et al. Cortical remyelination: a new target for repair therapies in multiple sclerosis. *Ann Neurol*. 2012;72:918–26. <https://doi.org/10.1002/ana.23693>.
42. Kuhlmann T, Miron V, Cui Q, Cuo Q, Wegner C, Antel J, et al. Differentiation block of oligodendroglial progenitor cells as a cause for remyelination failure in chronic multiple sclerosis. *Brain*. 2008;131:1749–58. <https://doi.org/10.1093/brain/awn096>.
43. Chang A, Tourtellotte WW, Rudick R, Trapp BD. Premyelinating oligodendrocytes in chronic lesions of multiple sclerosis. *N Engl J Med*. 2002;346:165–73. <https://doi.org/10.1056/NEJMoa010994>.
44. Reier PJ, Houle JD. The glial scar: its bearing on axonal elongation and transplantation approaches to CNS repair. *Adv Neurol*. 1988;47:87–138.
45. Sofroniew MV. Molecular dissection of reactive astrogliosis and glial scar formation. *Trends Neurosci*. 2009;32:638–47. <https://doi.org/10.1016/j.tins.2009.08.002>.
46. Brink BP, Veerhuis R, Breij ECW, van der Valk P, Dijkstra CD, Bö L. The pathology of multiple sclerosis is location-dependent: no significant complement activation is detected in purely cortical lesions. *J Neuropathol Exp Neurol*. 2005;64:147–55. <https://doi.org/10.1093/jnen/64.2.147>.
47. Andersson Å, Covacu R, Sunnemark D, Danilov AI, Dal Bianco A, Khademi M, et al. Pivotal advance: HMGB1 expression in active lesions of human and experimental multiple sclerosis. *J Leukoc Biol*. 2008;84:1248–55. <https://doi.org/10.1189/jlb.1207844>.
48. Bsibsi M, Bajramovic JJ, Vogt MHJ, van Duijvenvoorden E, Baghat A, Persoon-Deen C, et al. The microtubule regulator stathmin is an endogenous protein agonist for TLR3. *J Immunol*. 2010;184:6929–37. <https://doi.org/10.4049/jimmunol.0902419>.
49. Miranda-Hernandez S, Baxter AG. Role of toll-like receptors in multiple sclerosis. *Am J Clin Exp Immunol*. 2013;2:75–93.



50. Sloane JA, Blitz D, Margolin Z, Vartanian T. A clear and present danger: endogenous ligands of toll-like receptors. *NeuroMolecular Med.* 2010;12:149–63. <https://doi.org/10.1007/s12017-009-8094-x>.
51. Souza DG, Bellaver B, Souza DO, Quincozes-Santos A. Characterization of adult rat astrocyte cultures. *PLoS One.* 2013;8:e60282. <https://doi.org/10.1371/journal.pone.0060282>.
52. Baron W, Shattil SJ, ffrench-Constant C. The oligodendrocyte precursor mitogen PDGF stimulates proliferation by activation of alphavbeta3 integrins. *EMBO J.* 2002;21:1957–66. <https://doi.org/10.1093/emboj/21.8.1957>.
53. Bsibsi M, Nomden A, van Noort JM, Baron W. Toll-like receptors 2 and 3 agonists differentially affect oligodendrocyte survival, differentiation, and myelin membrane formation. *J Neurosci Res.* 2012;90:388–98. <https://doi.org/10.1002/jnr.22767>.
54. Lentferink DH, Jongsma JM, Werkman I, Baron W. Grey matter OPCs are less mature and less sensitive to IFN $\gamma$  than white matter OPCs: consequences for remyelination. *Sci Rep.* 2018;8:2113. <https://doi.org/10.1038/s41598-018-19934-6>.
55. Sorensen A, Moffat K, Thomson C, Barnett SC. Astrocytes, but not olfactory ensheathing cells or Schwann cells, promote myelination of CNS axons in vitro. *Glia.* 2008;56:750–63. <https://doi.org/10.1002/glia.20650>.
56. Stancic M, Slijepcevic D, Nomden A, Vos MJ, de Jonge JC, Sikkema AH, et al. Galectin-4, a novel neuronal regulator of myelination. *Glia.* 2012;60:919–35. <https://doi.org/10.1002/glia.22324>.
57. Qin J, Sikkema AH, van der Bij K, de Jonge JC, Klappe K, Nies V, et al. GD1a overcomes inhibition of myelination by fibronectin via activation of protein kinase a: implications for multiple sclerosis. *J Neurosci.* 2017;37:9925–38. <https://doi.org/10.1523/JNEUROSCI.0103-17.2017>.
58. Cahoy JD, Emery B, Kaushal A, Foo LC, Zamanian JL, Christopherson KS, et al. A transcriptome database for astrocytes, neurons, and oligodendrocytes: a new resource for understanding brain development and function. *J Neurosci.* 2008;28:264–78. <https://doi.org/10.1523/JNEUROSCI.4178-07.2008>.
59. Foo LC, Allen NJ, Bushong EA, Ventura PB, Chung W-S, Zhou L, et al. Development of a method for the purification and culture of rodent astrocytes. *Neuron.* 2011;71:799–811. <https://doi.org/10.1016/j.neuron.2011.07.022>.
60. Furusho M, Dupree JL, Nave KA, Bansal R. Fibroblast growth factor receptor signaling in oligodendrocytes regulates myelin sheath thickness. *J Neurosci.* 2012;32:6631–41. <https://doi.org/10.1523/JNEUROSCI.6005-11.2012>.
61. McKinnon RD, Matsui T, Dubois-Dalq M, Aaronson SA. FGF modulates the PDGF-driven pathway of oligodendrocyte development. *Neuron.* 1990;5:603–14. [https://doi.org/10.1016/0896-6273\(90\)90215-2](https://doi.org/10.1016/0896-6273(90)90215-2).
62. Stoffels JMJ, Hoekstra D, Franklin RJM, Baron W, Zhao C. The E11A domain from astrocyte-derived fibronectin mediates proliferation of oligodendrocyte progenitor cells following CNS demyelination. *Glia.* 2015; 63:242–56. <https://doi.org/10.1002/glia.22748>.
63. Espitia Pinzon N, van Mierlo H, de Jonge JC, Brevé JJP, Bol JGJM, Drukarch B, et al. Tissue transglutaminase promotes early differentiation of oligodendrocyte progenitor cells. *Front Cell Neurosci.* 2019;13:281. <https://doi.org/10.3389/fncel.2019.00281>.
64. Cheng X, Wang Y, He Q, Qiu M, Whittemore SR, Cao Q. Bone morphogenetic protein signaling and Olig1/2 interact to regulate the differentiation and maturation of adult oligodendrocyte precursor cells. *Stem Cells.* 2007;25:3204. <https://doi.org/10.1634/STEMCELLS.2007-0284>.
65. Barres BA, Burne JF, Holtmann B, Thoenen H, Sendtner M, Raff MC. Ciliary neurotrophic factor enhances the rate of oligodendrocyte generation. *Mol Cell Neurosci.* 1996;8:146–56. <https://doi.org/10.1006/mcne.1996.0053>.
66. Moore CS, Milner R, Nishiyama A, Frausto RF, Serwanski DR, Pagarigan RR, et al. Astrocytic tissue inhibitor of metalloproteinase-1 (TIMP-1) promotes oligodendrocyte differentiation and enhances CNS myelination. *J Neurosci.* 2011;31:6247–54. <https://doi.org/10.1523/JNEUROSCI.5474-10.2011>.
67. Czopka T, Von Holst A, Schmidt G, ffrench-Constant C, Faissner A. Tenascin C and tenascin R similarly prevent the formation of myelin membranes in a RhoA-dependent manner, but antagonistically regulate the expression of myelin basic protein via a separate pathway. *Glia.* 2009;57:1790–801. <https://doi.org/10.1002/glia.20891>.
68. Mason JL, Xuan S, Dragatsis I, Efstratiadis A, Goldman JE. Insulin-like growth factor (IGF) signaling through type 1 IGF receptor plays an important role in remyelination. *J Neurosci.* 2003;23:7710–8. <https://doi.org/10.1523/JNEUROSCI.23-20-07710.2003>.
69. Wang Q, Wang Z, Tian Y, Zhang H, Fang Y, Yu Z, et al. Inhibition of astrocyte connexin 43 channels facilitates the differentiation of oligodendrocyte precursor cells under hypoxic conditions in vitro. *J Mol Neurosci.* 2018;64:591–600. <https://doi.org/10.1007/s12031-018-1061-y>.
70. Stidworthy MF, Genoud S, Li WW, Leone DP, Mantei N, Suter U, et al. Notch1 and jagged1 are expressed after CNS demyelination, but are not a major rate-determining factor during remyelination. *Brain.* 2004;127:1928–41. <https://doi.org/10.1093/brain/awh217>.
71. Sobel RA, Ahmed AS. White matter extracellular matrix chondroitin sulfate/dermatan sulfate proteoglycans in multiple sclerosis. *J Neuropathol Exp Neurol.* 2001;60:1198–207. <https://doi.org/10.1093/jnen/60.12.1198>.
72. Langfelder P, Horvath S. WGCNA: an R package for weighted correlation network analysis. *BMC Bioinformatics.* 2008;9:559. <https://doi.org/10.1186/1471-2105-9-559>.
73. Berghoff SA, Gerndt N, Winchenbach J, Stumpf SK, Hosang L, Odoardi F, et al. Dietary cholesterol promotes repair of demyelinated lesions in the adult brain. *Nat Commun.* 2017;8:14241. <https://doi.org/10.1038/ncomms14241>.
74. Urbanski MM, Brendel MB, Melendez-Vasquez CV. Acute and chronic demyelinated CNS lesions exhibit opposite elastic properties. *Sci Rep.* 2019; 9:999. <https://doi.org/10.1038/s41598-018-37745-7>.
75. Stoffels JMJ, de Jonge JC, Stancic M, Nomden A, van Strien ME, Ma D, et al. Fibronectin aggregation in multiple sclerosis lesions impairs remyelination. *Brain.* 2013;136:116–31. <https://doi.org/10.1093/brain/aws313>.
76. Naba A, Clauser KR, Ding H, Whittaker CA, Carr SA, Hynes RO. The extracellular matrix: tools and insights for the “omics” era. *Matrix Biol.* 2016;11: 10–24. <https://doi.org/10.1016/j.matbio.2015.06.003>.
77. Selvaraju R, Bernasconi L, Losberger C, Graber P, Kadi L, Avellana-Adalid V, et al. Osteopontin is upregulated during in vivo demyelination and remyelination and enhances myelin formation in vitro. *Mol Cell Neurosci.* 2004;25:707–21. <https://doi.org/10.1016/j.mcn.2003.12.014>.
78. Harlow DE, Macklin WB. Inhibitors of myelination: ECM changes, CSPGs and PTPs. *Exp Neurol.* 2014;251:39–46. <https://doi.org/10.1016/j.expneurol.2013.10.017>.
79. Lamond R, Barnett SC. Schwann cells but not olfactory ensheathing cells inhibit CNS myelination via the secretion of connective tissue growth factor. *J Neurosci.* 2013;33:18686–97. <https://doi.org/10.1523/JNEUROSCI.3233-13.2013>.
80. Gutowski NJ, Newcombe J, Cuzner ML. Tenascin-R and C in multiple sclerosis lesions: relevance to extracellular matrix remodelling. *Neuropathol Appl Neurobiol.* 1999;25:207–14. <https://doi.org/10.1046/j.1365-2990.1999.00176.x>.
81. Steinman L. A molecular trio in relapse and remission in multiple sclerosis. *Nat Rev Immunol.* 2009;1:440–7. <https://doi.org/10.1038/nri2548>.
82. Wergeland S, Torkildsen Ø, Myhr K-M, Mørk SJ, Bø L. The cuprizone model: regional heterogeneity of pathology. *APMIS.* 2012;120:648–57. <https://doi.org/10.1111/j.1600-0463.2012.02882.x>.
83. Rosenberg SS, Kelland EE, Tokar E, De la Torre AR, Chan JR. The geometric and spatial constraints of the microenvironment induce oligodendrocyte differentiation. *Proc Natl Acad Sci U S A.* 2008;105:14662–7. <https://doi.org/10.1073/pnas.0805640105>.
84. Nieweg K, Schaller H, Pfrieger FW. Marked differences in cholesterol synthesis between neurons and glial cells from postnatal rats. *J Neurochem.* 2009;109:125–34. <https://doi.org/10.1111/j.1471-4159.2009.05917.x>.
85. Werkman IL, Kövilein J, de Jonge JC, Baron W. Impairing committed cholesterol biosynthesis in white matter astrocytes, but not grey matter astrocytes, enhances in vitro myelination. *J Neurochem.* 2020. <https://doi.org/10.1111/jnc.15113>.
86. Hynes RO, Naba A. Overview of the matrisome—an inventory of extracellular matrix constituents and functions. *Cold Spring Harb Perspect Biol.* 2012;4: a004903. <https://doi.org/10.1101/cshperspect.a004903>.
87. Sun Y, Deng Y, Xiao M, Hu L, Li Z, Chen C. Chondroitin sulfate proteoglycans inhibit the migration and differentiation of oligodendrocyte precursor cells and its counteractive interaction with laminin. *Int J Mol Med.* 2017;40:1657–68. <https://doi.org/10.3892/ijmm.2017.3153>.
88. Lau LW, Keough MB, Haylock-Jacobs S, Cua R, Döring A, Sloka S, et al. Chondroitin sulfate proteoglycans in demyelinated lesions impair remyelination. *Ann Neurol.* 2012;72:419–32. <https://doi.org/10.1002/ana.23599>.



89. Pu A, Stephenson EL, Yong VW. The extracellular matrix: focus on oligodendrocyte biology and targeting CSPGs for remyelination therapies. *Glia*. 2018;1:1809–25. <https://doi.org/10.1002/glia.23333>.
90. Jones EV, Bouvier DS. Astrocyte-secreted matricellular proteins in CNS remodelling during development and disease. *Neural Plast*. 2014;2014: 321209. <https://doi.org/10.1155/2014/321209>.
91. Murphy-Ullrich JE, Sage EH. Revisiting the matricellular concept. *Matrix Biol*. 2014;37:1–14. <https://doi.org/10.1016/j.matbio.2014.07.005>.
92. Sloane JA, Batt C, Ma Y, Harris ZM, Trapp B, Vartanian T. Hyaluronan blocks oligodendrocyte progenitor maturation and remyelination through TLR2. *Proc Natl Acad Sci*. 2010;107:11555–60. <https://doi.org/10.1073/pnas.1006496107>.
93. Werkman I, Sikkema AH, Versluijs JB, Qin J, de Boer P, Baron W. TLR3 agonists induce fibronectin aggregation by activated astrocytes: a role of pro-inflammatory cytokines and fibronectin splice variants. *Sci Rep*. 2020;10: 532. <https://doi.org/10.1038/s41598-019-57069-4>.
94. Espitia Pinzon N, Stroo E, t Hart BA, JGJM B, Drukarch B, Bauer J, et al. Tissue transglutaminase in marmoset experimental multiple sclerosis: discrepancy between white and grey matter. Bradl M, editor. *PLoS One*. 2014;9:e100574. <https://doi.org/10.1371/journal.pone.0100574>.
95. Tarassishin L, Suh H-S, Lee SC. LPS and IL-1 differentially activate mouse and human astrocytes: role of CD14. *Glia*. 2014;62:999–1013. <https://doi.org/10.1002/glia.22657>.
96. Gudi V, Škuljec J, Yildiz Ö, Frichert K, Skripuletz T, Moharrehg-Khiabani D, et al. Spatial and temporal profiles of growth factor expression during CNS demyelination reveal the dynamics of repair priming. Kleinschnitz C, editor. *PLoS One*. 2011;6:e22623. <https://doi.org/10.1371/journal.pone.0022623>.
97. van Wageningen TA, van Dam A-M. Much, if not all, of the cortical damage in MS can be attributed to the microglial cell – yes. *Mult Scler J*. 2018;24:895–6. <https://doi.org/10.1177/1352458517739139>.

## Publisher's Note

Springer Nature remains neutral with regard to jurisdictional claims in published maps and institutional affiliations.

**Ready to submit your research? Choose BMC and benefit from:**

- fast, convenient online submission
- thorough peer review by experienced researchers in your field
- rapid publication on acceptance
- support for research data, including large and complex data types
- gold Open Access which fosters wider collaboration and increased citations
- maximum visibility for your research: over 100M website views per year

**At BMC, research is always in progress.**

Learn more [biomedcentral.com/submissions](https://biomedcentral.com/submissions)

