

University of Groningen

## Inhibition of beta-catenin/CBP signalling improves airway epithelial barrier function and suppresses CCL20 release

Kuchibhotla, Virinchi N. S.; Jonker, Marnix R.; de Bruin, Harold G.; Noordhoek, Jacobien A.; Knight, Darryl A.; Nawijn, Martijn C.; Heijink, Irene H.

*Published in:*  
Allergy

*DOI:*  
[10.1111/all.14216](https://doi.org/10.1111/all.14216)

**IMPORTANT NOTE: You are advised to consult the publisher's version (publisher's PDF) if you wish to cite from it. Please check the document version below.**

*Document Version*  
Publisher's PDF, also known as Version of record

*Publication date:*  
2020

[Link to publication in University of Groningen/UMCG research database](#)

### *Citation for published version (APA):*

Kuchibhotla, V. N. S., Jonker, M. R., de Bruin, H. G., Noordhoek, J. A., Knight, D. A., Nawijn, M. C., & Heijink, I. H. (2020). Inhibition of beta-catenin/CBP signalling improves airway epithelial barrier function and suppresses CCL20 release. *Allergy*, 75(7), 1786-1789. <https://doi.org/10.1111/all.14216>

### **Copyright**

Other than for strictly personal use, it is not permitted to download or to forward/distribute the text or part of it without the consent of the author(s) and/or copyright holder(s), unless the work is under an open content license (like Creative Commons).

The publication may also be distributed here under the terms of Article 25fa of the Dutch Copyright Act, indicated by the "Taverne" license. More information can be found on the University of Groningen website: <https://www.rug.nl/library/open-access/self-archiving-pure/taverne-amendment>.

### **Take-down policy**

If you believe that this document breaches copyright please contact us providing details, and we will remove access to the work immediately and investigate your claim.

Downloaded from the University of Groningen/UMCG research database (Pure): <http://www.rug.nl/research/portal>. For technical reasons the number of authors shown on this cover page is limited to 10 maximum.

# Inhibition of $\beta$ -catenin/CBP signalling improves airway epithelial barrier function and suppresses CCL20 release

To the editor

The airway epithelial barrier in asthma may be more susceptible to damage and/or less capable of repair in response to aeroallergens like house dust mite (HDM), resulting in loss of barrier function, as evidenced by reduced expression of cell-cell adhesion protein E-cadherin.<sup>1</sup> This may not only lead to increased permeability to allergens and impaired epithelial differentiation, but also result in increased pro-inflammatory responses, including the release of cytokines such as CCL20, GM-CSF, CCL17, IL-33 and TSLP to attract and activate immune cells.<sup>2</sup> Epithelial cells from asthma patients display a more basal phenotype than healthy epithelium, along with an inability to re-differentiate into a functionally intact epithelium and reconstitute normal barrier function upon damage by allergens.<sup>3</sup> The loss of E-cadherin releases  $\beta$ -catenin, which translocates to the nucleus, inducing divergent gene expression profiles depending on recruitment of different transcriptional co-activators. Recruitment of CREB-binding protein (CBP) results in expression of genes associated with epithelial de-differentiation, migration and proliferation, while p300 induces gene transcription associated with cell differentiation.<sup>4</sup> We previously observed that epithelial exposure to HDM results in E-cadherin and  $\beta$ -catenin loss from adherens junctions, accompanied by increased CCL20 release, and that asthma-derived airway epithelial cells are more susceptible to these HDM-induced effects. It is currently unknown whether dysregulated  $\beta$ -catenin signalling contributes to this abnormal epithelial phenotype in asthma.

We hypothesized that binding of  $\beta$ -catenin to p300 suppresses pro-inflammatory responses and improves epithelial barrier function. We tested this by pharmacological inhibition of  $\beta$ -catenin/CBP activity using ICG-001, a highly specific inhibitor of  $\beta$ -catenin/CBP binding promoting  $\beta$ -catenin/p300 binding,<sup>5</sup> in human primary airway epithelial cells (PAECs). We assessed effects on HDM-induced CCL20 release and barrier function at baseline and after injury.

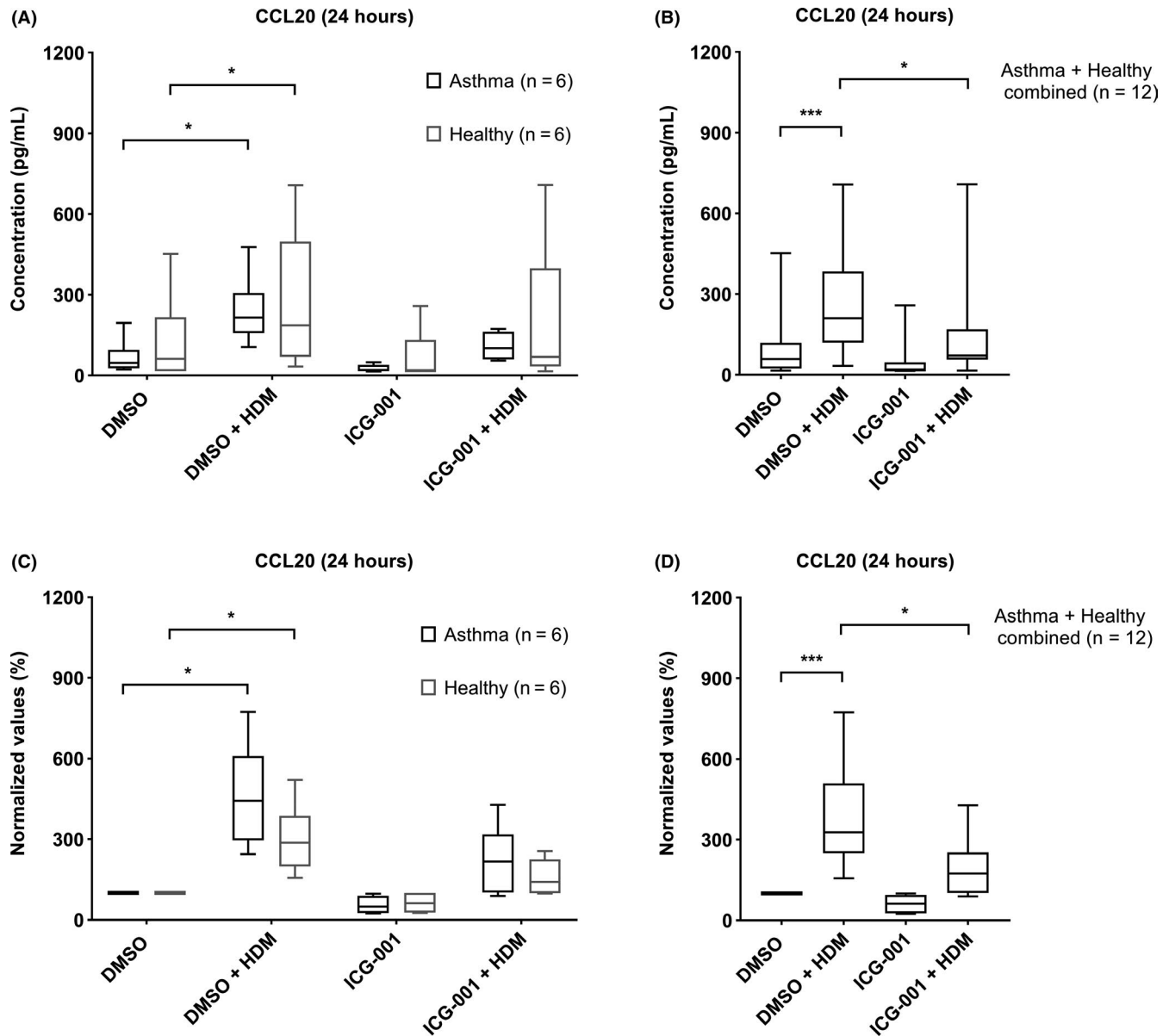
We first investigated whether  $\beta$ -catenin/CBP signalling regulates epithelial pro-inflammatory responses by quantifying the effect of ICG-001 on HDM-induced CCL20 release. HDM significantly increased CCL20 production in PAECs obtained by bronchial brushings from both asthma and healthy donors (Figure 1A,C). As there was no significant difference in HDM-induced CCL20 increase between PAECs from asthma ( $4.4 \pm 2.0$ -fold) and healthy donors

( $2.9 \pm 1.1$ -fold), we combined the groups to assess the effect of ICG-001. Pretreatment with ICG-001 significantly decreased the HDM-induced CCL20 release in the combined group of asthma and healthy donors ( $0.48 \pm 0.35$ -fold, Figure 1B,D). Similar effects were observed for GM-CSF (Figure S1A,B), where ICG-001 significantly reduced basal and HDM-induced GM-CSF levels, while CCL17, TSLP and IL-33 were not detectable. Furthermore, a similar effect of HDM on CCL20 was observed in PAECs derived from human tracheobronchial tissue of normal lung transplant donors, with a trend towards inhibition of HDM-induced CCL20 levels by ICG-001 (Figure S1C,D).

We next investigated if ICG-001 treatment improves epithelial barrier function, a hypothesized prerequisite for epithelial differentiation, in PAECs derived from human bronchial tissue of normal lung transplant donors because of the limited availability of PAECs from the bronchial brushings from asthma and healthy donors. Electric resistance was measured as read-out for epithelial barrier function using Electric Cell-substrate Impedance Sensing (ECIS), a highly accurate technique for real-time monitoring of cell adhesion/spreading, barrier function and wound healing.<sup>6</sup> While low-frequency resistance is most sensitive for changes in cell-cell contacts, high-frequency capacitance is more sensitive for changes in cell-substrate contacts. Low-frequency resistance, stabilizing at  $2572.4 \pm 294.9 \Omega$  upon hormone/growth factor deprivation, significantly increased after addition of ICG-001 ( $\sim 1.5$ -fold), which was evident within 6 hours and lasted up to 30 hours (Figure 2A). The high-frequency capacitance altered to a lesser extent (Figure 2B), indicating that this effect is primarily due to increased cell-cell adhesion. We next investigated if ICG-001 promotes epithelial cell repair after injury induced by electroporation, using 5 V pulses at 40 kHz for 30 seconds, resulting in almost complete detachment of the cells from the electrode.<sup>6</sup> This was reflected by an immediate decrease in resistance (Figure 2C) and comparable increase in capacitance (Figure 2D), followed by migration of cells over the wounded area, as evident from the increase in resistance and decrease in capacitance, restoring the integrity of the monolayer within  $\sim 3$  hours. While 3-hour pretreatment with ICG-001 did not affect this initial repair response, ICG-001 further enhanced low-frequency resistance once capacitance stabilized, indicating increased recovery of cell-cell contacts (Figure 2C,D).

This is an open access article under the terms of the Creative Commons Attribution-NonCommercial-NoDerivs License, which permits use and distribution in any medium, provided the original work is properly cited, the use is non-commercial and no modifications or adaptations are made.

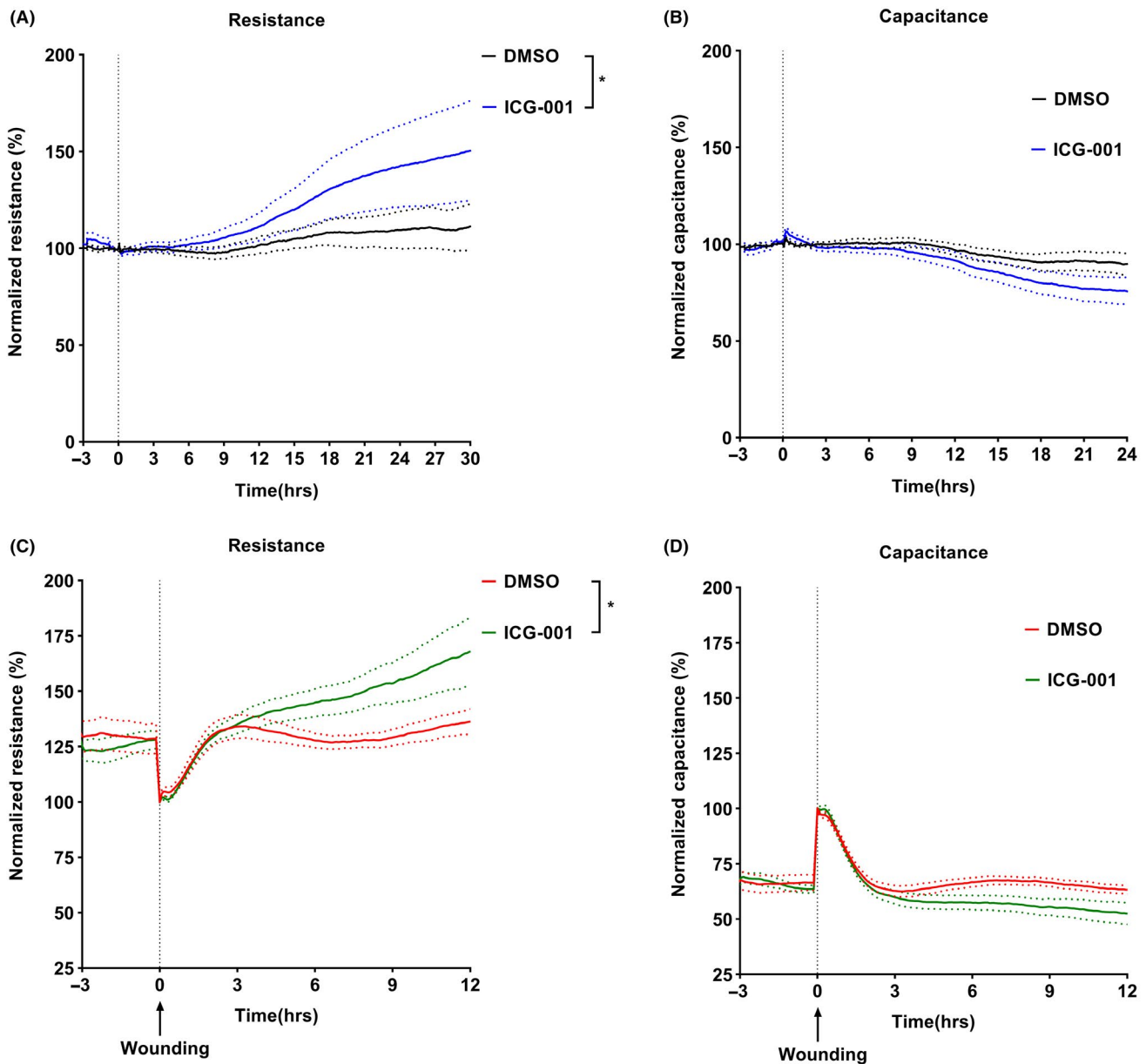
© 2020 The Authors. *Allergy* published by John Wiley & Sons Ltd



**FIGURE 1** ICG-001 inhibits HDM-induced CCL20 production in PAECs. PAECs were obtained by bronchial brushings from healthy ( $n = 6$ ) and asthmatic ( $n = 6$ ) donors. Cells were seeded in duplicates at a density of  $5 \times 10^4$  cells/well in a 24-well plate, grown to confluence, growth factor/hormone deprived overnight, pretreated with  $10 \mu\text{M}$  of ICG-001/vehicle control for 3 h, followed by  $50 \mu\text{g/mL}$  HDM. Cell-free supernatants were collected after 24 hours, and protein levels of CCL20 were measured. CCL20 levels are presented as absolute values (pg/mL) (A, B) or as percentage of the unstimulated levels (C, D). CCL20 levels in separate (A, C), and in combined group (B, D) of asthma and healthy-derived PAECs. Data are presented as median  $\pm$  IQR, and Friedman test was used to determine the statistical significance; \* $P < .05$ , \*\*\* $P < .001$

Because of the limited PAEC numbers, we used human bronchial epithelial 16HBE cells for further mechanistic studies. We observed that in 16HBE both HDM and thapsigargin increased the release of CCL20, which was inhibited by ICG-001 pretreatment (Figure S2A,B). ICG-001 did not reduce CCL20 mRNA expression (Figure S2C-F), indicating that ICG-001 inhibits HDM-induced CCL20 release through post-transcriptional regulation. Indeed, ICG-001 still inhibited CCL20 release upon inhibition of de novo synthesis using cycloheximide (Figure S3A,B). Of note, disrupting cortical actin filaments, and thus localization of E-cadherin at cell-cell contacts, by cytochalasin D significantly increased CCL20 release, with a trend towards inhibition by ICG-001 (Figure S3C).

As for the mechanisms of barrier function, we previously observed that 16HBE barrier function is comparable to that of differentiated PAECs.<sup>6</sup> We used thapsigargin to induce barrier damage, a sarco/endoplasmic reticulum  $\text{Ca}^{2+}$  ATPase (SERCA) inhibitor that mimics the  $\text{Ca}^{2+}$ -mediated effects of HDM,<sup>2</sup> yet causing a more robust effect. Thapsigargin induced a similar decrease in 16HBE barrier function (Figure S4C) as observed for electroporation in PAECs. ICG-001 increased barrier function at baseline and improved recovery from thapsigargin-induced damage (Figure S4). This was accompanied by a significant increase in the localization of E-cadherin to cell-cell contacts, which may be regulated by the



**FIGURE 2** ICG-001 increases the epithelial barrier function in PAECs. PAECs were obtained from human bronchial tissue of normal lung transplant donors ( $n = 6$ ). Cells were seeded in duplicates at a density of  $5 \times 10^4$  cells/well in 8-well electrode arrays connected to ECIS system, grown to confluence for 3 days, growth factor/hormone deprived overnight, and pretreated with  $10 \mu\text{M}$  of ICG-001 or vehicle control for 3 h. (A) Resistance and (B) capacitance values were normalized to the time point of addition of ICG-001. After 3 h, the cells were wounding by electroporation. (C) Resistance and (D) capacitance values were normalized to the lowest and highest points respectively after wounding. Data are presented as mean  $\pm$  SEM, and two-way ANOVA was used to determine the statistical significance;  $*P < .05$

organization of the actin cytoskeleton and cortical expression of F-actin (Figure S5A-C). Accordingly, blocking actin polymerization using cytochalasin D caused a transient decrease in barrier function, with a disorganized actin network and junctional disruption of E-cadherin, which could at least in part be mitigated by ICG-001 (Figure S5D,E). Collectively, these data suggest that ICG-001 may improve epithelial barrier function by increasing  $\beta$ -catenin recycling to adherens junctions to form a complex with E-cadherin and the actin cytoskeleton. We previously showed that junctional E-cadherin loss leads to increased EGFR activity,<sup>7</sup> which can induce

$\text{Ca}^{2+}$  signalling and subsequently activate ADAM10, a well-known sheddase of E-cadherin.<sup>8</sup> Our current data suggest that inhibition of CCL20 release by ICG-001 may be mediated by stabilizing E-cadherin at the membrane, inhibiting EGFR activity,<sup>7</sup>  $\text{Ca}^{2+}$  signalling and subsequent ADAM10 activation (Figure S6), which we have previously shown to be involved in CCL20 release.<sup>9</sup> Further studies are currently being directed towards investigating the effect of inhibition of the  $\beta$ -catenin/CBP pathway on barrier function and mucociliary differentiation of PAECs from healthy and asthma donors cultured at air-liquid interface.

In conclusion, our data show that inhibition of  $\beta$ -catenin/CBP signalling promotes cell-cell contacts and recovery of epithelial barrier function upon damage, while attenuating CCL20 release after HDM exposure. Interference of  $\beta$ -catenin/CBP signalling may constitute a novel treatment strategy aimed at the restoration of the mucosal barrier in asthma and protection against pro-inflammatory activity in asthma.

### CONFLICTS OF INTEREST

Mr Kuchibhotla, Dr Nawijn and Dr Heijink report grant from Stichting Astma Bestrijding (SAB) during the conduct of the study. Dr Nawijn also reports a grant from Lung Foundation (Netherlands) during the conduct of the study. Mr Jonker, Ms Noordhoek, Mr de Bruin and Dr Knight have nothing to disclose.

Virinchi N. S. Kuchibhotla<sup>1,2</sup> 

Marnix R. Jonker<sup>1,2</sup>

Harold G. de Bruin<sup>1,2</sup>

Jacobien A. Noordhoek<sup>1,2,3</sup>

Darryl A. Knight<sup>4,5</sup>

Martijn C. Nawijn<sup>1,2</sup>

Irene H. Heijink<sup>1,2,3</sup> 

<sup>1</sup>Laboratory of Experimental Pulmonology and Inflammation Research (EXPIRE), Department of Pathology & Medical Biology, University Medical Center Groningen, University of Groningen, Groningen, The Netherlands

<sup>2</sup>University Medical Center Groningen, GRIAC Research Institute, University of Groningen, Groningen, The Netherlands

<sup>3</sup>Department of Pulmonology, University Medical Center Groningen, University of Groningen, Groningen, The Netherlands

<sup>4</sup>School of Biomedical Sciences and Pharmacy, University of Newcastle, Callaghan, NSW, Australia

<sup>5</sup>Priority Research Centre for Healthy Lungs, Hunter Medical Research Institute, New Lambton Heights, NSW, Australia

### Correspondence

Irene H. Heijink, Laboratory of Experimental Pulmonology and Inflammation Research (EXPIRE), Department of Pathology & Medical Biology, University Medical Center Groningen, University of Groningen, Groningen, The Netherlands.

Email: h.i.heijink@umcg.nl

### ORCID

Virinchi N. S. Kuchibhotla  <https://orcid.org/0000-0002-4867-4026>

Irene H. Heijink  <https://orcid.org/0000-0002-1260-8932>

### REFERENCES

1. Heijink IH, Nawijn MC, Hackett T-L. Airway epithelial barrier function regulates the pathogenesis of allergic asthma. *Clin Exp Allergy*. 2014;44(5):620-630.
2. Post S, Nawijn MC, Jonker MR, et al. House dust mite-induced calcium signaling instigates epithelial barrier dysfunction and CCL20 production. *Allergy Eur J Allergy Clin Immunol*. 2013;68(9):1117-1125.
3. Hackett T-L, Warner SM, Stefanowicz D, et al. Induction of epithelial-mesenchymal transition in primary airway epithelial cells from patients with asthma by transforming growth factor- $\beta$ 1. *Am J Respir Crit Care Med*. 2009;180(2):122-133.
4. Ma H, Nguyen C, Lee K-S, Kahn M. Differential roles for the coactivators CBP and p300 on TCF/b-catenin-mediated survivin gene expression. *Oncogene* 2005;24:3619-3631.
5. Emami KH, Nguyen C, Ma H, et al. A small molecule inhibitor of beta-catenin/CREB-binding protein transcription [corrected]. *Proc Natl Acad Sci USA*. 2004;101(34):12682-12687.
6. Heijink IH, Brandenburg SM, Noordhoek JA, Postma DS, Slebos DJ, Van Oosterhout AJM. Characterisation of cell adhesion in airway epithelial cell types using electric cell-substrate impedance sensing. *Eur Respir J*. 2010;35(4):894-903.
7. Heijink IH, Kies PM, Kauffman HF, Postma DS, van Oosterhout AJM, Vellenga E. Down-regulation of E-cadherin in human bronchial epithelial cells leads to epidermal growth factor receptor-dependent Th2 cell-promoting activity. *J Immunol*. 2007;178(12):7678-7685.
8. Maretzky T, Reiss K, Ludwig A, et al. ADAM10 mediates E-cadherin shedding and regulates epithelial cell-cell adhesion, migration, and -catenin translocation. *Proc Natl Acad Sci USA*. 2005;102(26):9182-9187.
9. Post S, Rozeveld D, Jonker MR, Bischoff R, Van Oosterhout AJ, Heijink IH. ADAM10 mediates the house dust mite-induced release of chemokine ligand CCL20 by airway epithelium. *Allergy Eur J Allergy Clin Immunol*. 2015;70(12):1545-1552.

### SUPPORTING INFORMATION

Additional supporting information may be found online in the Supporting Information section.