

University of Groningen

Web-based personalised information and support for patients with a neuroendocrine tumour

de Hosson, L. D.; Bouma, G.; Stelwagen, J.; van Essen, H.; de Bock, G. H.; de Groot, D. J. A.; de Vries, E. G. E.; Walenkamp, A. M. E.

Published in:
Orphanet journal of rare diseases

DOI:
[10.1186/s13023-019-1035-3](https://doi.org/10.1186/s13023-019-1035-3)

IMPORTANT NOTE: You are advised to consult the publisher's version (publisher's PDF) if you wish to cite from it. Please check the document version below.

Document Version
Publisher's PDF, also known as Version of record

Publication date:
2019

[Link to publication in University of Groningen/UMCG research database](#)

Citation for published version (APA):

de Hosson, L. D., Bouma, G., Stelwagen, J., van Essen, H., de Bock, G. H., de Groot, D. J. A., de Vries, E. G. E., & Walenkamp, A. M. E. (2019). Web-based personalised information and support for patients with a neuroendocrine tumour: randomised controlled trial. *Orphanet journal of rare diseases*, 14, [60].
<https://doi.org/10.1186/s13023-019-1035-3>

Copyright

Other than for strictly personal use, it is not permitted to download or to forward/distribute the text or part of it without the consent of the author(s) and/or copyright holder(s), unless the work is under an open content license (like Creative Commons).

The publication may also be distributed here under the terms of Article 25fa of the Dutch Copyright Act, indicated by the "Taverne" license. More information can be found on the University of Groningen website: <https://www.rug.nl/library/open-access/self-archiving-pure/taverne-amendment>.

Take-down policy

If you believe that this document breaches copyright please contact us providing details, and we will remove access to the work immediately and investigate your claim.

Downloaded from the University of Groningen/UMCG research database (Pure): <http://www.rug.nl/research/portal>. For technical reasons the number of authors shown on this cover page is limited to 10 maximum.

RESEARCH

Open Access



Web-based personalised information and support for patients with a neuroendocrine tumour: randomised controlled trial

L. D. de Hosson^{1†}, G. Bouma^{1†}, J. Stelwagen¹, H. van Essen¹, G. H. de Bock², D. J. A. de Groot¹, E. G. E. de Vries¹ and A. M. E. Walenkamp^{1*}

Abstract

Background: Patients with a neuroendocrine tumour (NET) frequently have physical and psychosocial complaints. Aim of this study is to determine whether a web-based, personalised information and support system (WINS) reduces distress and/or improves patients' perception of and satisfaction with information received.

Methods: Patients with NET, stratified for those newly diagnosed (< 6 months, $n = 28$) and with a longer history of disease ($n = 74$), were randomised between standard care ($n = 49$) and intervention, consisting of access to WINS ($n = 53$). Primary outcome was change of distress and satisfaction with perceived information measured with the distress thermometer and problem list and the QoL questionnaire (QLQ)-INFO25. The intervention group also completed a questionnaire based on the technical acceptance model (TAM).

Results: We observed no difference in distress slope and slope of median global score on perceived information and satisfaction between the intervention and control group. Interestingly, 55% of patients wished to receive more information at baseline.

Conclusions: In a population of NET patients, access to WINS did not improve indicators for distress, perception of information and satisfaction with information received, more than standard care only. Despite the need for more information, the WINS does not have added value to the information and care provided by health care professionals.

Clinical trial registration: ClinicalTrials.gov (NCT02472678). Registered 6th Jan 2015. Retrospectively registered 1st May 2017.

Keywords: Neuroendocrine tumour, Information, Quality of life, Internet, Web-based system

Background and aims

Neuroendocrine tumours (NETs) are rare tumours with an incidence of 3.5/100,000 per year in the last decade [1, 2]. Patients with NET may experience various symptoms from the tumour mass, the output of hormones secreted by the tumour, treatment and accompanying side effects [3]. Patients are frequently metastasized at the time of diagnosis. Patients with metastasized NETs

have a relatively long median survival: 100 months for NETs of the small intestine and 60 months for pancreatic NETs [4]. Patients with NET have a lower quality of life (QoL) compared with the general population [5]. For patients with NET it is difficult to find meaningful and understandable information about their diagnosis. Anxiety, higher depression, and stress negatively influenced QoL in patients with NET. Self-efficacy, more social support and optimism are associated with better QoL [6]. Previous research in cancer patients and cancer survivors has consistently shown that high satisfaction with the information received and satisfied information needs were related to better quality of life and lower emotional distress for anxiety and depression [7, 8].

* Correspondence: a.walenkamp@umcg.nl

L.D. de Hosson and G. Bouma contributed equally to the manuscript
¹Department of Medical Oncology, University of Groningen, University Medical Centre Groningen, DA11, PO Box 30.001, 9700, RB, Groningen, The Netherlands

Full list of author information is available at the end of the article



Furthermore internet-based support programs are effective in improving psychosocial and physical symptoms in cancer patients [9]. In addition, in an observational study of NET patients using qualitative interviews, 7 out of 18 patients found the internet to be a useful source of general information [10].

We previously developed a web-based personalised information and support system (WINS), for patients with NETs with the aim of reducing distress and/or improving patients' perception of and satisfaction with information received.

A pilot study demonstrated the feasibility of using WINS in patients with NET [11]. Based on these results and on patients' recommendations, we developed the current version of WINS, which was used in the present study. The aim of this randomised trial is to determine whether WINS reduces distress and/or improves NETs patients' perception of and satisfaction with information received.

Results

Patients

Between May 2015 and October 2016, we included 105 patients in the study (Fig. 1). The trial was ended when 91 patients completed the study. Of the 91 patients who completed the study, 46 (12 newly diagnosed) patients were randomised to the intervention group. Baseline characteristics of included patients are shown in Table 1. At baseline, 78 patients had previously visited the internet for information on NET before randomisation. At baseline, 50 patients stated that they wanted to receive more information compared to 31 at end of study. At baseline, 4 patients answered that they would prefer to

receive less information. At the end of study no patients gave this answer.

Primary outcomes

The median distress level in both groups was 3 before and after study (Tables 2, 3). A significant difference in distress was found for only the domain 'social problems'; at end of study 12 patients in the control group of 45, reported social problems compared to 7 patients at baseline. Four patients at end of study in the intervention group of 46 patients, compared to 10 patients at baseline were found to have social problems ($p < 0.01$). The median global score for patients' perception of and satisfaction with information received, did not improve in the intervention group relative to the control group (Tables 2, 4). Interestingly, 53 and 57% of patients in the control and intervention group wish to receive more information, respectively. After the intervention less patients in the control group (31%) wished to receive more information versus the patients in the intervention group (38%).

Most patients agreed with the statements mentioned in the additional questionnaire (Table 5). During the study, the median number of visits to the website was 3 (range 2–4), and only 3 patients used the opportunity to ask questions and consult with the researcher for clinical purposes. Other questions were about technical or logistical aspects.

Newly diagnosed patients

The planned subgroup analysis for newly diagnosed patients did not detect any difference in this subgroup regarding the global score for distress and the problem

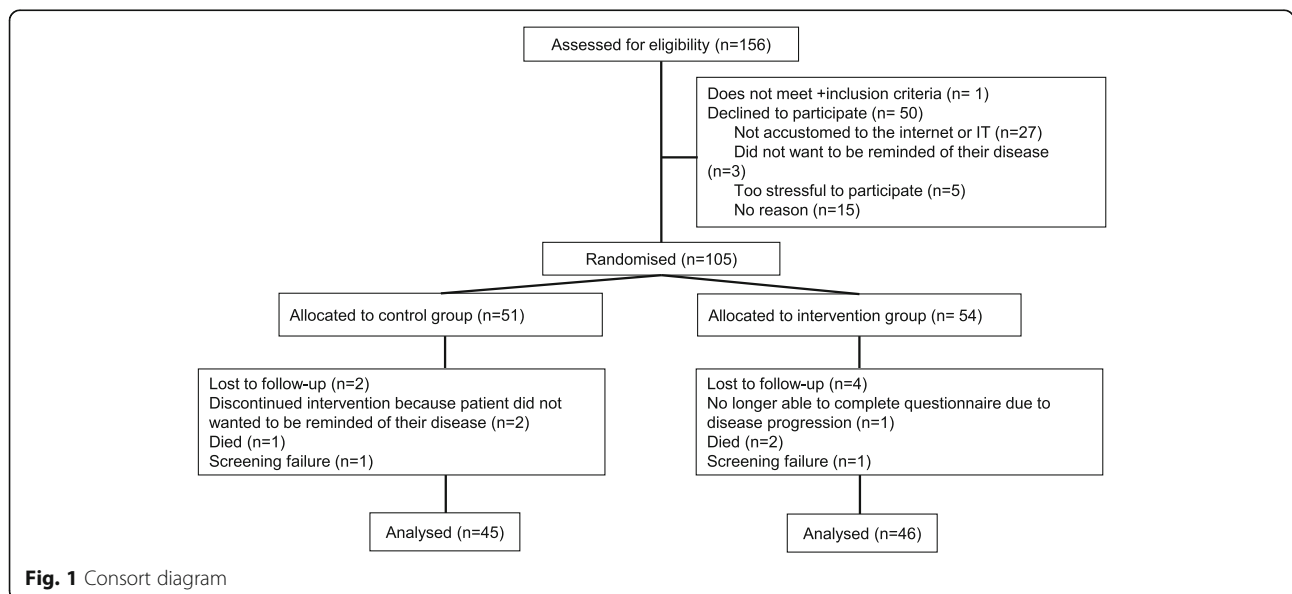


Fig. 1 Consort diagram

Table 1 Baseline characteristics

| | All patients n = 91 | Control group n = 45 | Intervention group n = 46 |
|---|------------------------|-------------------------|------------------------------|
| Newly diagnosed patients n (%) | 25 (27) | 13 (29) | 12 (26) |
| Sex (female) n (%) | 42 (46) | 23 (51) | 19 (41) |
| Age mean in years (sd) | 62 (8) | 63 (7) | 62 (10) |
| Location of primary tumor: n (%) | | | |
| Pancreas | 21 (23) | 9 (20) | 12 (26) |
| Intestine | 53 (58) | 26 (58) | 27 (59) |
| Stomach/duodenum | 3 (3) | 2 (4) | 1 (2) |
| Colorectal | 2 (3) | 2 (4) | 1 (2) |
| Bronchopulmonal | 1 (1) | 1 (2) | 0 (0) |
| Appendix | 1 (1) | 1 (2) | 0 (0) |
| Unknown/other | 9 (10) | 4 (9) | 5 (11) |
| Duration of disease in months: mean (SD) | 41 (56) | 33 (38) | 50 (66) |
| Disease grade: n (%) | | | |
| 1 | 57 (63) | 27 (60) | 30 (65) |
| 2 | 21 (23) | 12 (27) | 9 (20) |
| Unknown | 13 (14) | 6 (13) | 7 (15) |
| Marital state (Married) n (%) | 75 (82) | 34 (76) | 41 (89) |
| Education (Polytechnic or university) n (%) | 33 (37) | 16 (36) | 17 (38) |
| Internet use n (%) | | | |
| Daily | 86 (96) | 40 (91) | 46 (100) |
| For information about the disease | 78 (87) | 37 (82) | 41 (89) |
| Treatment during study: n (%) | | | |
| Surgery | 7 (8) | 2 (4) | 5 (11) |
| PRRT | 2 (2) | 1 (2) | 1 (2) |
| SSA | 64 (70) | 32 (71) | 32 (70) |
| Systemic treatment other than SSA | 17 (19) | 9 (20) | 8 (17) |
| Treatment before study: n (%) | | | |
| Surgery | 52 (57) | 26 (58) | 26 (57) |
| PRRT | 2 (2) | 0 (0) | 2 (4) |
| Radiotherapy | 3 (3) | 0 (0) | 3 (6) |
| SSA | 65 (71) | 32 (71) | 33 (72) |
| Systemic treatment other than SSA | 23 (25) | 12 (26) | 11 (24) |
| Other (RFA) | 1 (1) | 0 (0) | 1 (2) |

n = number, PRRT = peptide receptor radionuclide therapy, RFA = radiofrequency ablation, SSA = somatostatin analogue

Table 2 Primary outcome, distress and global score of perceived information and satisfaction (EORTC QLQ-INFO25)

| Outcome | Control group (n = 45) | | Intervention group (n = 46) | | p |
|---------------------------------------|------------------------|------------------------|-----------------------------|------------------------|----|
| | Pre Median (range) | Post Median (range) | Pre Median (range) | Post Median (range) | |
| Distress level (0–10) | 3 (1–5) | 3 (1–5) | 3 (2–5) | 3 (1–5) | NS |
| Global Score EORTC QLQ-INFO25 (0–100) | 49 (37–55) | 51 (42–59) | 45 (33–56) | 38 (47–57) | NS |

Higher scores mean more distress and more/better information and satisfaction

NS = no significant difference, Pre Median = median score at baseline, Post median = median score a 12 weeks, range = interquartile range

Table 3 Distress (Distress thermometer and Problem List)

| Outcome | Control group (n = 45) | | Intervention group (n = 46) | | p |
|--------------------|------------------------|---------------------|-----------------------------|---------------------|-------|
| | Pre Median (range) | Post Median (range) | Pre Median (range) | Post Median (range) | |
| Practical problems | 0 (0–4) | 0 (0–4) | 0 (0–4) | 0 (0–5) | NS |
| Social problems | 0 (0–0) | 0 (0–4) | 0 (0–0) | 0 (0–0) | 0.002 |
| Emotional problems | 3.5 (0–13) | 6 (0–12) | 7 (1–16) | 7 (1–16) | NS |
| Spiritual problems | 0 (0–0) | 0 (0–0) | 0 (0–0) | 0 (0–0) | NS |
| Physical problems | 8 (4–18) | 10 (6–19) | 13 (7–21) | 12 (5–20) | NS |
| Global score | 14 (7–32) | 17 (6–44) | 21 (12–41) | 21 (7–44) | NS |

Higher scores mean more distress (from problems). The p-value shows the differences between the pre-post changes of the control group versus the intervention group

NS = no significant difference, *Pre Median*: median score at baseline, *Post median*; median score a 12 weeks, range; interquartile range

domains (Additional file 1 and Additional file 2: Tables S1 and S2).

In this subgroup, perceived information and satisfaction did not differ between the control group and intervention group. We found a difference for only one item, ‘information about the disease in the QLQ-INFO25’; after 12 weeks this score decreased in the intervention group and increased in the control group ($p = 0.046$). Most patients agreed with the statements on the self-constructed questionnaire (Additional file 1 and Additional file 2: Table S5).

Discussion

In this randomised trial we found that WINS did not reduce distress nor improved NETs patients’ perception of and satisfaction with information received. We found

the same results in the pre-planned subgroup analyses with newly diagnosed patients.

Developing a web-based system (WBS) providing patient detailed information corresponding to their individual needs and wishes is difficult [12]. The contact and communication with health care professionals remains a crucial source of information and support for patients with NET. Other web-based studies have shown that web-based technology does not replace patient-provider communication [13]. In one such study, in which 103 cancer patients received questionnaires about the WBS, the highest rated component was receiving an answer from a nurse. In another trial in 766 patients receiving chemotherapy for solid cancers, patients were randomised to either standard care or to standard care plus a web-based self-reporting system. Physicians received

Table 4 Perceived information and satisfaction (EORTC QLQ-INFO25)

| Outcome | Control group (n = 45) | | Intervention group (n = 46) | | p |
|---------------------------------------|------------------------|---------------------|-----------------------------|---------------------|----|
| | Pre Median (range) | Post Median (range) | Pre Median (range) | Post Median (range) | |
| Information about | | | | | |
| Disease | 50 (33–58) | 50 (42–65) | 50 (33–60) | 50 (33–67) | NS |
| Medical tests | 67 (44–67) | 67 (44–67) | 67 (56–67) | 67 (28–56) | NS |
| Treatments | 44 (25–56) | 39 (33–56) | 44 (28–56) | 8 (0–27) | NS |
| Other services | 17 (0–25) | 17 (8–33) | 17 (6–23) | 8 (0–27) | NS |
| Different location of care facilities | 0 (0–33) | 33 (0–33) | 0 (0–33) | 0 (0–33) | NS |
| How to help yourself | 33 (0–33) | 33 (0–33) | 17 (0–33) | 33 (0–33) | NS |
| Satisfaction with information | 67 (33–67) | 67 (33–67) | 67 (33–67) | 67 (33–67) | NS |
| Helpfulness of information | 67 (50–67) | 67 (67–67) | 67 (67–67) | 67 (33–67) | NS |
| Percentage of patients | | | | | |
| Received written information | 91 | 91 | 78 | 80 | |
| Received cd/video | 2 | 2 | 2 | 0 | |
| Wish to receive more info | 53 | 31 | 57 | 38 | |
| Wish to receive less info | 2 | 0 | 2 | 0 | |

Higher scores indicate more/better information and satisfaction. The p-value shows the differences between the pre-post changes of the control group versus the intervention group

cd = compact disk, NS = no significant difference, *Pre Median* = median score at baseline, *Post median* = median score a 12 weeks, range = interquartile range

Table 5 Questionnaire based on patients' opinion and use of the website (based on constructs of the Technology Acceptance Model)

| | Intervention group (n = 46) |
|---|--------------------------------|
| Outcome | Median (range) |
| The website is useful to me | 4 (4–4) |
| The information at the website is interesting to me | 4 (4–4) |
| I find this a site that adds value | 4 (3–5) |
| I have a positive attitude towards the website | 4 (4–5) |
| I would recommend the site to peers | 4 (3–5) |
| How often do you visit the website | 3 (2–4) |

Higher scores indicate more agreement with the statement (except for number of visits)

Median: median score (at 12 weeks), range; interquartile range

symptom printouts at visits and nurses received e-mail alerts when participants of the intervention group reported severe or worsening symptoms. In this trial, QoL improved (34% vs. 18%; $p < 0.001$) and OS was higher (31 vs. 26 months; $p = 0.03$) in the intervention group compared to the group receiving standard care only [14]. Another example, that web-based technology does not replace patient-provider communication, was presented in a randomised controlled study of a website providing additional information and symptom self-management support in 325 breast and prostate cancer patients. Distress was used as the primary endpoint [15]. Compared to the control group, which was given uniform resource locators (URLs) of publically available cancer information websites, an improvement for patients in the intervention group was found only on the subscale 'global distress index'.

A potential explanation for these findings could be that NET patients obtain sufficient information by usual care that all patients received. In our trial all patients had easy access to specialists and nurses during standard care, which might have satisfied their need for information. Furthermore, patients were able to get information from the NET patient association [16]. We did not use a control group receiving no information which can be regarded as a limitation of our study.

At baseline half of the patients in both groups indicated that they wanted more information about the disease. During study period, the need for more information decreased in both groups. A decline in the need for information during the course of the disease was observed in other studies analysing patients with other types of cancer [17, 18]. Furthermore, patients only visited the WBS sporadically. Patients were not requested to visit the website more frequent, which also could be seen as a limitation. Sporadically visiting a WBS was also reported in other trials using a WBS [15, 19]. In a qualitative interview study, one of the three main reasons

reported for not using a WBS was that patients had sufficient access to information elsewhere [20]. In two other studies, in patients with cancer and brain tumours, patients reported that they avoided using the WBS because they did not want to be reminded of their suffering or, because they had a preference for other kinds of communication [20, 21].

Another limitation is that we could only analyze patients with outcome data on the second assessment, as the primary endpoint was the pre-post change of distress and satisfaction with perceived information. For that, the 14 (13%) of the patients who withdrew early, or who did not complete the end-of-study questionnaires were excluded from the analysis.

Conclusion

In NET patients, WINS did not improve distress scores and patients' perception of or satisfaction with information received, compared to patients receiving standard care only. Despite the need for more information, the WINS does not have added value to the information and care provided by health care professionals.

Methods

Participants

Eligible participants were adult patients treated at the University Medical Centre Groningen Department of Medical Oncology for NET grade 1 or 2 (World Health Organization 2010 classification) with the primary tumour at any site of origin, and who were proficient in Dutch (both reading and writing). Patients with a life expectancy of less than 3 months as evaluated by their doctor were excluded. The study was approved by the medical ethical committee of the UMCG and registered in ClinicalTrials.gov (NCT02472678). All patients gave written informed consent.

Randomisation process and study procedure

For a detailed description of study procedures, see Additional file 1 and Fig. 1. The included patients were stratified randomised for those diagnosed within 6 months and those with disease duration ≥ 6 months. Patients were randomised 1:1 to the control group, receiving standard care, or the intervention group, which received standard care with additional access to WINS. At baseline patients' socio-demographic and disease characteristics, internet use and health care use were collected. Patients in both groups received a questionnaire about their perception of and satisfaction with the received information and their QoL. The control group was also given a questionnaire about distress and problems. After returning the questionnaires, patients in the intervention group received log-in information for website access. At the first website visit, the patients

were asked to complete a questionnaire about distress and problems at baseline, before they were given access to the other items on the website. At 12 weeks follow-up, all patients were asked to complete the questionnaires again, with an additional questionnaire to assess empowerment. Patients in the intervention group were asked to complete the questionnaire about distress and problems at the WINS instead of completing it with pen and paper. Furthermore, they were requested to complete an additional questionnaire about their use of and opinion about WINS.

Standard care and study intervention

All patients received standard care. At their first visit at the Department of Medical Oncology patients are informed verbally about the disease and they meet the oncology nurse to become acquainted. During follow-up visits, the medical oncologist evaluates the general well-being, discusses possible treatment options and treatment side-effects (if applicable) and answers questions of the patient. Between follow-up visits all patients could consult an oncology nurse 24 h a day, 7 days a week by telephone. Furthermore, patients were able to get information from the NET patient association [16]. If physical and/or psychosocial problems require more in-depth discussion, investigation or treatment, patients can receive a consultation with the oncology nurse, oncologist or other health care professionals.

In the intervention group, the questionnaire about distress and problems served as a self-screening tool for physical and psychosocial problems. By using WINS, patients could obtain personalised information about reported problems. Self-screening was performed by the online version of the Dutch Distress Thermometer (DT) and Problem List (PL). Immediately after completion of the DT and PL. Patients received online information on the physical and psychosocial problems they reported on the digital PL. This information comprises: a) description and background information of their reported problem b) advice on how to cope with the problem (self-help) c) what health care professional could be consulted when self-help insufficiently alleviates problems. On the WINS, patients could also find general information about the disease, read about the experiences of other NET patients and find links to other relevant websites. Any time, patients could send an e-mail with a question or request a telephone consultation with the investigators (physicians experienced in treating NET patients) in case of questions, problems or request further referral.

Outcome measurements

Illness-related patient characteristics were extracted from the medical records at baseline. All other measurements

were performed by self-report questionnaires. Selection of endpoints was based on the results of the pilot study [11]. According to our pre planned protocol our primary endpoint was the combined endpoint of distress the change in distress level combined with change in global score of perception of and satisfaction with information received. Distress was measured using the validated Dutch Distress Thermometer (DT) and Problem list (PL) [22]. This questionnaire consisted of one single item that asks patients to indicate the amount of overall distress experienced during the past week and a PL with several items divided into five domains. Higher scores indicate more distress or more problems. The EORTC QLQ-INFO25 in Dutch was used to evaluate patients' perception of and satisfaction with information received [23]. Higher scores indicate better perceived information provision. The measures of the validated QLQ-INFO25 are categorized and scored according to the EORTC guidelines. For a more detailed description of the questionnaires, see our pilot study. An additional questionnaire, only given to the intervention group at end of study was based on the constructs of 'perceived usefulness' and 'attitude and usage' from the revised Technology Acceptance Model and on a self-constructed question on a 5-point likert scale; if patients recommend WINS to other NET patients [24].

Sample size calculation

Sample size calculation was based on the results of the pilot study, in which only newly diagnosed patients were included. To detect a significant difference in the change of the distress thermometer between the control and intervention group, using an independent t-test with an effect size of 0.6, we calculated that 90 patients had to be included (Additional file 1). Taking into account a dropout of 15%, we included 105 patients in this study,

Statistical analysis

For descriptive statistics, mean and standard deviation (sd) for normal distribution and median and interquartile range for other distributions and frequencies were calculated for all measures. The scores of the EORTC questionnaires were calculated according to the EORTC guidelines [23, 25, 26]. An independent t-test or Mann Whitney U test was performed, depending on the kind of distribution, to detect differences between the pre-post changes of standard care complemented with the WINS versus standard care alone. Given the negative findings of the outcome we did not correct for multiple comparison issues. Subgroup analysis was performed in newly diagnosed patients. Differences were considered significant at $p < 0.05$. Analyses were performed with the software package SPSS, version 23 for Windows (SPSS, Inc., Chicago, IL, USA). Patients who were lost to follow up were excluded from analysis.

Additional files

Additional file 1: Supportive Information. (DOCX 24 kb)

Additional file 2: Table S1. Distress in newly diagnosed patients (Distress thermometer and Problem List). **Table S2.** Perceived information and satisfaction with information in newly diagnosed patients (EORTC QLQ-INFO25). **Table S3A.** Quality of life in newly diagnosed patients (EORTC QLQ-C30). **Table S3B.** Quality of life in newly diagnosed patients (EORTC QLQ-GINET1). **Table S4.** Empowerment in newly diagnosed patients (CEO). **Table S5.** Questionnaire on patients' opinions and use of the website in newly diagnosed patients (based on constructs of the Technology Acceptance Model). **Table S6A.** Quality of life (EORTC QLQ-C30). **Table S6B.** Quality of life (EORTC QLQ-GINET1). **Table S7.** Empowerment (CEO). (DOCX 50 kb)

Abbreviations

CEO: Constructs empowering outcomes; DT: Distress; EORTC: European organization for research and treatment of cancer; N: Number; NET: Neuroendocrine tumor; PL: Problem list; QLQ: Quality of life questionnaire; QoL: Quality of life; RCT: Randomised controlled trial; SD: Standard deviation; SI: Supportive information; TAM: Technical acceptance model; WBS: Web-based system; WINS: Web-based personalised information and support system

Acknowledgements

The authors have no acknowledgements to declare.

Funding

This project was supported by an educational grant of Ipsen made available to the UMCG.

Availability of data and materials

Patient level data can be made available from the corresponding author after discussion with the trial management committee. Consent from participants for data sharing was not obtained but any shared data will be anonymised.

Authors' contributions

GB, LDH, DJG, EGV, AMW contributed equally to the development of the protocol. GB, LDH, HE, DJG, EGV and AMW, managed patient enrolment. LDH and GHB analysed the data. GB and LDH drafted the manuscript, and all other members of the writing committee contributed amendments and critical review. All authors had full access to the data and all members of the writing committee approved the final manuscript and the decision to submit for publication. AMW is guarantor.

Ethics approval and consent to participate

The study was approved by the medical ethical committee of the UMCG. Results were reviewed at regular intervals by an independent data monitoring and ethical committee.

Consent for publication

Not applicable.

Competing interests

All authors have completed the ICMJE uniform disclosure form at www.icmje.org/coi_disclosure.pdf and declare: no support from any organisation for the submitted work; no financial relationships with any organisations that might have an interest in the submitted work in the previous three years; no other relationships or activities that could appear to have influenced the submitted work.

Publisher's Note

Springer Nature remains neutral with regard to jurisdictional claims in published maps and institutional affiliations.

Author details

¹Department of Medical Oncology, University of Groningen, University Medical Centre Groningen, DA11, PO Box 30.001, 9700, RB, Groningen, The Netherlands. ²Department of Epidemiology, University of Groningen, University Medical Centre Groningen, Groningen, The Netherlands.

Received: 27 August 2018 Accepted: 17 February 2019

Published online: 28 February 2019

References

- Ramage JK, Ahmed A, Ardill J, et al. Guidelines for the management of gastroenteropancreatic neuroendocrine (including carcinoid) tumours (NETs). *Gut*. 2012;61:6–32.
- Lawrence B, Gustafsson BI, Chan A, Svejda B, Kidd M, Modlin IM. The epidemiology of gastroenteropancreatic neuroendocrine tumors. *Endocrinol Metab Clin N Am* 2011;40:1,18, vii.
- Oberg KE. The management of neuroendocrine tumours: current and future medical therapy options. *Clin Oncol (R Coll Radiol)*. 2012;24:282–93.
- Dasari A, Shen C, Halperin D, et al. Trends in the incidence, prevalence, and survival outcomes in patients with neuroendocrine tumors in the United States. *JAMA Oncol*. 2017;3:1335–42.
- Haugland T, Vatn MH, Veenstra M, Wahl AK, Natvig GK. Health related quality of life in patients with neuroendocrine tumors compared with the general Norwegian population. *Qual Life Res*. 2009;18:719–26.
- Haugland T, HA DV. Symptoms, Psychosocial Factors, and Health-related quality of life in patients with neuroendocrine tumors: an integrative review. *Cancer Nurs*. 2018. Epub ahead of print. <https://doi.org/10.1097/NCC.0000000000000614>.
- Faller H, Strahl A, Richard M, Niehues C, Meng K. The prospective relationship between satisfaction with information and symptoms of depression and anxiety in breast cancer: a structural equation modeling analysis. *Psychooncology*. 2017;26:1741–8.
- Husson O, Mols F, Van de Poll-Franse LV. The relation between information provision and health-related quality of life, anxiety and depression among cancer survivors: a systematic review. *Ann Oncol*. 2011;22:761–72.
- Bouma G, Admiraal JM, de Vries EG, Schroder CP, Walenkamp AM, Reyners AK. Internet-based support programs to alleviate psychosocial and physical symptoms in cancer patients: a literature analysis. *Crit Rev Oncol Hematol*. 2015;95:26–37.
- Feinberg Y, Law C, Singh S, Wright FC. Patient experiences of having a neuroendocrine tumour: a qualitative study. *Eur J Oncol Nurs*. 2013;17:541–5.
- Bouma G, de Hosson LD, van Woerkom CE, et al. Web-based information and support for patients with a newly diagnosed neuroendocrine tumor: a feasibility study. *Support Care Cancer*. 2017;25:2075–83.
- Kuenzel U, Monga Sindeu T, Schroth S, Huebner J, Herth N. Evaluation of the quality of online information for patients with rare cancers: thyroid cancer. *J Cancer Educ*. 2017; Epub ahead of print.
- Ruland CM, Maffei RM, Borosund E, Krahn A, Andersen T, Grimsbo GH. Evaluation of different features of an eHealth application for personalized illness management support: cancer patients' use and appraisal of usefulness. *Int J Med Inform*. 2013;82:593–603.
- Basch E, Deal AM, Dueck AC, et al. Overall survival results of a trial assessing patient-reported outcomes for symptom monitoring during routine cancer treatment. *JAMA*. 2017;318:197–8.
- Ruland CM, Andersen T, Jeneson A, et al. Effects of an internet support system to assist cancer patients in reducing symptom distress: a randomized controlled trial. *Cancer Nurs*. 2013;36:6–17.
- Stichting NET-groep, informatie over neuro-endocriene kanker 2017. NET-groep. (2017, at <http://www.net-kanker.nl/>).
- S. Mattson, E.M.G. Olsson, B. Johansson, M. Carlsson. Health-related internet use in people with cancer: results from a cross-sectional study in two outpatient clinics in Sweden. 2017;e163.
- Matsuyama RK, Kuhn LA, Molisani A, Wilson-Genderson MC. Cancer patients' information needs the first nine months after diagnosis. *Patient Educ Couns*. 2013;90:96–102.
- Vogel RI, Petzel SV, Cragg J, et al. Development and pilot of an advance care planning website for women with ovarian cancer: a randomized controlled trial. *Gynecol Oncol*. 2013;131:430–6.
- Varsi C, Gammon D, Wibe T, Ruland CM. Patients' reported reasons for non-use of an internet-based patient-provider communication service: qualitative interview study. *J Med Internet Res*. 2013;15:e246.

21. Piil K, Jakobsen J, Juhler M, Jarden M. The feasibility of a brain tumour website. *Eur J Oncol Nurs*. 2015;19:686–93.
22. Tuinman MA, Gazendam-Donofrio SM, Hoekstra-Weebers JE. Screening and referral for psychosocial distress in oncologic practice: use of the distress thermometer. *Cancer*. 2008;113:870–8.
23. Arraras JJ, Greimel E, Sezer O, et al. An international validation study of the EORTC QLQ-INFO25 questionnaire: an instrument to assess the information given to cancer patients. *Eur J Cancer*. 2010;46:2726–38.
24. Van der Heijden H. Factors influencing the usage of websites: the case of a generic portal in the Netherlands. *Inf Manag*. 2003;40:541.
25. Aaronson NK, Ahmedzai S, Bergman B, et al. The European Organization for Research and Treatment of Cancer QLQ-C30: a quality-of-life instrument for use in international clinical trials in oncology. *J Natl Cancer Inst*. 1993;85:365–76.
26. Yadegarfar G, Friend L, Jones L, et al. Validation of the EORTC QLQ-GINET21 questionnaire for assessing quality of life of patients with gastrointestinal neuroendocrine tumours. *Br J Cancer*. 2013;108:301–10.

Ready to submit your research? Choose BMC and benefit from:

- fast, convenient online submission
- thorough peer review by experienced researchers in your field
- rapid publication on acceptance
- support for research data, including large and complex data types
- gold Open Access which fosters wider collaboration and increased citations
- maximum visibility for your research: over 100M website views per year

At BMC, research is always in progress.

Learn more biomedcentral.com/submissions

