

University of Groningen

Tolerability and Pharmacokinetic Evaluation of Inhaled Dry Powder Tobramycin Free Base in Non-Cystic Fibrosis Bronchiectasis Patients

Hoppentocht, Marcel; Akkerman, Onno W.; Hagedoorn, Paul; Alffenaar, Jan-Willem C.; van der Werf, Tjip S.; Kerstjens, Huib A. M.; Frijlink, Henderik W.; de Boer, Anne H.

Published in:
 PLoS ONE

DOI:
[10.1371/journal.pone.0149768](https://doi.org/10.1371/journal.pone.0149768)

IMPORTANT NOTE: You are advised to consult the publisher's version (publisher's PDF) if you wish to cite from it. Please check the document version below.

Document Version
 Publisher's PDF, also known as Version of record

Publication date:
 2016

[Link to publication in University of Groningen/UMCG research database](#)

Citation for published version (APA):

Hoppentocht, M., Akkerman, O. W., Hagedoorn, P., Alffenaar, J-W. C., van der Werf, T. S., Kerstjens, H. A. M., Frijlink, H. W., & de Boer, A. H. (2016). Tolerability and Pharmacokinetic Evaluation of Inhaled Dry Powder Tobramycin Free Base in Non-Cystic Fibrosis Bronchiectasis Patients. *PLoS ONE*, *11*(3), [e0149768]. <https://doi.org/10.1371/journal.pone.0149768>

Copyright

Other than for strictly personal use, it is not permitted to download or to forward/distribute the text or part of it without the consent of the author(s) and/or copyright holder(s), unless the work is under an open content license (like Creative Commons).

The publication may also be distributed here under the terms of Article 25fa of the Dutch Copyright Act, indicated by the "Taverne" license. More information can be found on the University of Groningen website: <https://www.rug.nl/library/open-access/self-archiving-pure/taverne-amendment>.

Take-down policy

If you believe that this document breaches copyright please contact us providing details, and we will remove access to the work immediately and investigate your claim.

Downloaded from the University of Groningen/UMCG research database (Pure): <http://www.rug.nl/research/portal>. For technical reasons the number of authors shown on this cover page is limited to 10 maximum.

RESEARCH ARTICLE

Tolerability and Pharmacokinetic Evaluation of Inhaled Dry Powder Tobramycin Free Base in Non-Cystic Fibrosis Bronchiectasis Patients

Marcel Hoppentocht¹*, Onno W. Akkerman², Paul Hagedoorn¹, Jan-Willem C. Alffenaar³, Tjip S. van der Werf^{2,4}, Huib A. M. Kerstjens², Henderik W. Frijlink¹, Anne H. de Boer¹

1 Department of Pharmaceutical Technology and Biopharmacy, University of Groningen, Groningen, the Netherlands, **2** Department of Pulmonary Diseases and Tuberculosis, University of Groningen, University Medical Center Groningen, Groningen, the Netherlands, **3** Department of Clinical Pharmacy and Pharmacology, University of Groningen, University Medical Center Groningen, Groningen, the Netherlands, **4** Department of Internal Medicine, University of Groningen, University Medical Center Groningen, Groningen, the Netherlands

* These authors contributed equally to this work.

* m.hoppentocht@rug.nl



CrossMark
click for updates

OPEN ACCESS

Citation: Hoppentocht M, Akkerman OW, Hagedoorn P, Alffenaar J-WC, van der Werf TS, Kerstjens HAM, et al. (2016) Tolerability and Pharmacokinetic Evaluation of Inhaled Dry Powder Tobramycin Free Base in Non-Cystic Fibrosis Bronchiectasis Patients. PLoS ONE 11(3): e0149768. doi:10.1371/journal.pone.0149768

Editor: D William Cameron, University of Ottawa, CANADA

Received: November 27, 2015

Accepted: February 3, 2016

Published: March 9, 2016

Copyright: © 2016 Hoppentocht et al. This is an open access article distributed under the terms of the [Creative Commons Attribution License](https://creativecommons.org/licenses/by/4.0/), which permits unrestricted use, distribution, and reproduction in any medium, provided the original author and source are credited.

Data Availability Statement: All relevant data are within the paper.

Funding: Part of this study was sponsored by NanoNextNL (03D.09), <http://www.nanonextnl.nl/>. The funder had no role in the study design, data collection and analysis, decision to publish, or preparation of the manuscript. All other costs were paid for with Novolizer royalty income. There was no additional external funding received for this study.

Abstract

Rationale

Bronchiectasis is a condition characterised by dilated and thick-walled bronchi. The presence of *Pseudomonas aeruginosa* in bronchiectasis is associated with a higher hospitalisation frequency and a reduced quality of life, requiring frequent and adequate treatment with antibiotics.

Objectives

To assess local tolerability and the pharmacokinetic parameters of inhaled excipient free dry powder tobramycin as free base administered with the Cyclops dry powder inhaler to participants with non-cystic fibrosis bronchiectasis. The free base and absence of excipients reduces the inhaled powder dose.

Methods

Eight participants in the study were trained in handling the device and inhaling correctly. During drug administration the inspiratory flow curve was recorded. Local tolerability was assessed by spirometry and recording adverse events. Serum samples were collected before, and 15, 30, 45, 60, 75, 90, 105, 120 min; 4, 8 and 12 h after inhalation.

Results and Discussion

Dry powder tobramycin base was well tolerated and mild tobramycin-related cough was reported only once. A good drug dose-serum concentration correlation was obtained.

Competing Interests: The employer of M. Hoppentocht, Dr. A.H. de Boer, Prof. Dr. H.W. Frijlink and P. Hagedoorn receives royalty payments over the sales of the Novolizer[®], Genuair[®]/Pressair[®] and Twincer[™] dry powder inhalers. Prof. Dr. H.A.M.

Kerstjens receives consultancy fees for his institution from: Novartis, Pfizer, Boehringer Ingelheim, Almirall, GlaxoSmithKline, Takeda, Chiesi, Protaffin, Nycomed and AstraZeneca. The other authors have no conflicts of interest to declare. This does not alter the authors' adherence to PLOS ONE policies on sharing data and materials.

Abbreviations: CF, Cystic fibrosis; DPI, Dry powder inhaler; HR-CT, High-resolution computed tomography; *Psa*, *Pseudomonas aeruginosa*; TIP, Tobramycin inhalation powder.

Relatively small inhaled volumes were computed from the recorded flow curves, resulting in presumably substantial deposition in the central airways—i.e., at the site of infection.

Conclusions

In this first study of inhaled dry powder tobramycin free base in non-cystic fibrosis bronchiectasis patients, the free base of tobramycin and the administration with the Cyclops dry powder device were well tolerated. Our data support further clinical studies to evaluate safety and efficacy of this compound in this population.

Introduction

Bronchiectasis is a persistent and frequently progressive condition characterised by dilated and thick-walled bronchi. This pathology can result from many underlying conditions, including post-infectious conditions. It is often divided in bronchiectasis caused by cystic fibrosis (CF) and non-cystic fibrosis (non-CF) bronchiectasis. The main symptoms of bronchiectasis are cough and chronic sputum production [1]. The infectious burden stimulates neutrophilic and inflammatory mediator responses in the airways [2]. Ongoing structural damage has been referred to as the vicious circle in bronchiectasis [3]. Different studies show that *Haemophilus influenzae* was isolated in 29–42% and *Pseudomonas aeruginosa* (*Psa*) in 13–31% of the patients with stable non-CF bronchiectasis [4,5]. The presence of *Psa* in patients with bronchiectasis is associated with increased sputum production, more extensive bronchiectasis on high-resolution computed tomography (HR-CT) of the chest, a higher hospitalisation frequency, and a reduced quality of life [2,6–9].

Current treatment practice for non-CF bronchiectasis patients chronically infected with *Psa* consists of pulmonary tobramycin (as sulphate) or colistin (as sulphomethate sodium) often in combination with orally administered macrolides [1,10]. However, the BTS guidelines are still reticent about using macrolides in this population. Both inhaled drugs are most frequently administered by wet nebulisation. Nebulised tobramycin sulphate is usually administered for 28 days in 2 daily doses of 300 mg each, followed by 28 days without tobramycin therapy to reduce the risk of side effects and antibiotic resistance. This regimen was originally tested in patients with CF [11–13]; trials conducted with inhaled tobramycin in non-CF bronchiectasis patients with chronic *Psa* have shown clinical improvement and a reduction in bacterial density too [14]. An alternative to wet nebulisation of tobramycin sulphate is the TOBI[®] Podhaler[™]. Tobramycin sulphate inhalation powder (TIP), administered with the Podhaler[™] to CF patients that are chronically infected with *Psa* appeared to be safe and effective [15]. Pharmacokinetic parameters and efficacy of a 112 mg TIP dose twice daily were similar to 300 mg nebulised tobramycin sulphate solution twice daily [15]. However, the re-usable capsule based dry powder inhaler (DPI) and voluminous powder formulation of the sulphate containing various excipients have some disadvantages, notably, the large number of steps to administer one dose [16]. No clinical studies with dry powder tobramycin have been carried out in non-CF bronchiectasis patients to date.

The aim of this study was to assess local tolerability and the pharmacokinetic parameters of increasing doses of dry powder tobramycin free base administered using the Cyclops DPI without excipients to participants with non-CF bronchiectasis.

Table 1. Participant characteristics.

Participant	Sex	Age	FEV ₁ /FVC	FEV1 Predicted (%)	BMI	Asthma
P1	F	60	67	113	43	Yes
P2	F	68	86	74	32	No
P3	F	69	46	31	31	Yes
P4	M	69	65	71	23	No
P5	F	64	71	71	25	No
P6	F	63	77	106	23	No
P7	F	57	71	92	39	Yes
P8	F	73	61	82	29	Yes

doi:10.1371/journal.pone.0149768.t001

Methods

Materials

Tobramycin free base was obtained from Spruyt Hillen BV (the Netherlands) and spray dried at the Department of Clinical Pharmacy and Pharmacology of the University Medical Center Groningen (UMCG) following previously described procedures [17]. The free base of tobramycin was chosen instead of the commonly used sulphate salt based on its favourable physico-chemical properties and the sulphate group increases the amount of powder to be inhaled [17]. The Cyclops DPIs used during this study were also described earlier [17].

Participants

Eight participants with non-CF bronchiectasis, confirmed by HR-CT, were recruited in the outpatient department of the Department of Pulmonary Diseases and Tuberculosis of the UMCG. The baseline characteristics of the participants are listed in Table 1. The criteria for exclusion were partly based on the contra-indications and known drug-drug interactions of the TOBI® Podhaler™ [18]. In- and exclusion criteria are listed in Table 2. Written informed consent was obtained from all participants.

Study objectives and design

The primary objectives were to assess both local tolerability and pharmacokinetics of dry powder tobramycin free base administered using the Cyclops in the target population. During four consecutive visits, at least 7 days apart, the participants received a 30, 60, 120 or 240 mg dose of

Table 2. In- and exclusion criteria.

Inclusion criteria:
Age 18 years or older
Obtained informed consent
Patients having bronchiectasis (confirmed with HR-CT of the chest)
Exclusion criteria:
Patients with cystic fibrosis
Pregnant or breast feeding
Subjects with known or suspected renal, auditory, vestibular or neuromuscular dysfunction, or with severe, active haemoptysis
History of adverse events on previous tobramycin or other aminoglycoside use
Concurrent use of cyclosporin, cisplatin, amfotericin B, cephalosporins, polymyxins, vancomycin or NSAIDs

doi:10.1371/journal.pone.0149768.t002

dry powder tobramycin from the Cyclops. Each blister contained 30 mg of tobramycin; the higher doses were administered in multiple successive blisters and inhalers. This study was performed as single centre, dose-escalation study at UMCG location Beatrixoord (Haren, the Netherlands). The study flowchart is depicted in [Fig 1](#).

Tolerability

Local tolerability was assessed by spirometry, combined with active questioning and passive monitoring by recording remarks about adverse events made by the participants. Spirometry was performed before (S0) inhalation and 20 (S1), 35 (S2) and 95 (S3) minutes after inhalation. A drop in FEV₁ of 10% or more compared to baseline FEV₁ (S0) was considered significant. Active questioning for adverse events was done every time a blood sample was drawn. Furthermore, before inhalation the creatinine level of every participant was measured as baseline to check for decreased kidney function. The creatinine clearance was calculated using the Cockcroft Gault formula.

Serum sampling and analysis

Blood samples were collected before pulmonary administration of the study drug ($t = 0$), and 15, 30, 45, 60, 75, 90, 105, 120 min; 4, 8 and 12 hours after inhalation. The samples were centrifuged for 5 min at 3000 rpm and subsequently stored at -80°C until analysis. Tobramycin serum concentrations were analysed using a modified immunoassay method Syva[®] Emit[®] 2000 Tobramycin Assay (Siemens Healthcare, Germany) combined with the ARCHITECT c8000 (Abbott Diagnostics, U.S.A.) [[19](#)].

Pharmacokinetic analysis

The area under the concentration time curve from $t = 0$ to $t = 12$ h (AUC_{0-12}) was calculated by the log-lineartrapezoidal rule using the KinFIT function in the pharmacokinetic software package MW/Pharm (Mediware, the Netherlands) [[20](#)]. The maximum serum concentration (C_{max}) and time to maximum serum concentration (t_{max}) were derived from the concentration-time curves. The delivered dose was computed from weighed dose and inhaler residue determined by gravimetric analysis for the first two participants and by chemical and gravimetric analysis for the others. Gravimetric analysis was performed immediately after inhalation and chemical analysis on the same day of administration. We used a 2,4,6-Trinitrobenzene Sulfonic Acid (TNBSA) assay to chemically quantify the amount of tobramycin retained in the Cyclops DPIs [[17](#)].

Recording of the inspiratory flow curve

Prior to inhalation of the study drug, study participants received inhalation instructions followed by training regarding handling of the device and performing a correct inhalation manoeuvre. Training was done using an empty Cyclops connected to a laptop, with self-written software (LabVIEW, National Instruments, the Netherlands) for recording and processing of flow curves generated through the device. A differential pressure gauge (Sitrans P250, Siemens, Germany) was used to measure the pressure drops generated across the inhaler, after prior pressure drop versus flow rate calibration with a thermal mass flow meter (Brooks Smart Mass Flow Meter 5863S, USA). Inhaler instrumentation was performed without changing the inhaler resistance or interfering with the aerosol delivery [[17](#)]. First when a series of consistent flow curves meeting the criteria for good inhaler performance was obtained during training, a similarly instrumented Cyclops with tobramycin was handed to the participant. Also during the drug

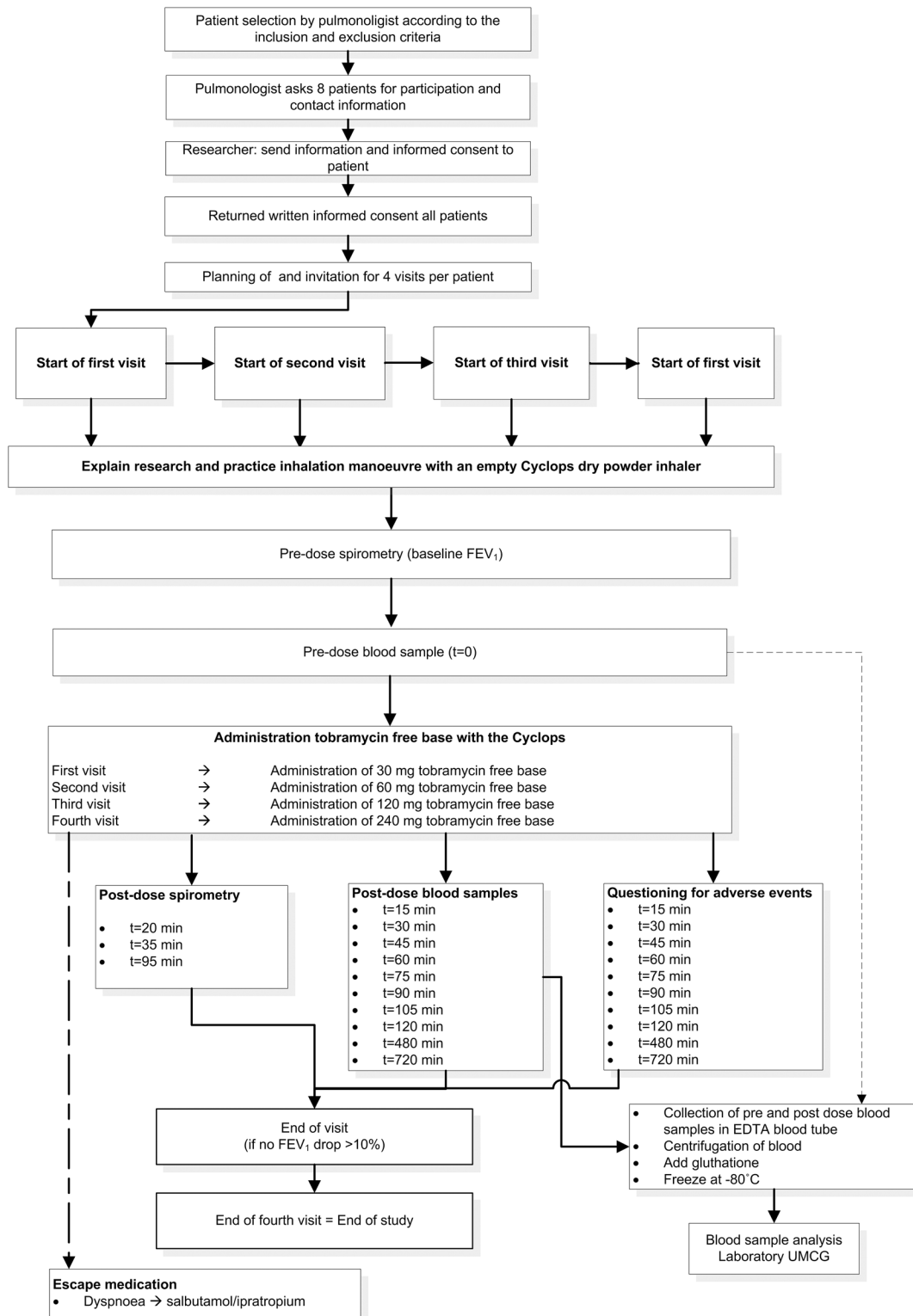


Fig 1. CONSORT flow diagram tobra-02 study.

doi:10.1371/journal.pone.0149768.g001

administration the inspiratory flow-rate was recorded to be able to explain unexpected pharmacokinetic results, and to ascertain that the participants generated a 4 kPa pressure drop—corresponding with the target flow rate of 34 L/min [17].

Ethics

The study protocol (S2 Text) was approved by the medical ethical review committee (METc) of the UMCG (METc number 2013.024) on May 15th 2013 and was performed according to the Helsinki declaration. The study was registered at www.clinicaltrials.gov (NCT02035488). The authors confirm that all ongoing and related trials for this drug/intervention are registered. However, the study was registered after patient recruitment began due to miscommunication. After notification, this issue was resolved. The study lasted from July 1st 2013 (start patient inclusion) until June 13th 2014 (last day of the study).

Results

Participants

Eight participants were enrolled and all completed the study.

Inhalation manoeuvres

Training of respiratory manoeuvres was successful in all participants. All were also able to hold their breath for 10 sec after inhalation of the drug to facilitate deposition by sedimentation in the airways.

Local tolerability

Administration of dry powder tobramycin free base using the Cyclops was well tolerated. Table 3 shows that four participants showed significant drops in FEV₁ ($\geq 10\%$) at some time point after dose administration. In total six significant drops were recorded out of 32 measurements (19%), 4 times after a low dose (30–60 mg) and 2 times after a high dose (120–240 mg). The first two participants had slight complaints of a bad taste after inhalation of the first dose (30 mg). For this reason, the participants were advised to rinse their mouth with water after the complete dose was administered. Thereafter, none of the participants reported this adverse event. Two participants reported mild cough—one after a dose of 240 mg, 7 hours after inhalation; the other reported cough after active questioning after a dose of 30 mg, 1 hour after inhalation.

Table 3. Drops in FEV₁ >10% during all four visits.

Participant	Visit 1 (30 mg)	Visit 2 (60 mg)	Visit 3 (120 mg)	Visit 4 (240 mg)
P1	No	No	No	No
P2	No	No	Yes (S1: 18%; S2: 11%)	No
P3	Yes (S1: 14%; S2: 10%)	Yes (S3: 10%)	No	No
P4	No	No	No	No
P5	No	No	No	No
P6	No	No	No	No
P7	Yes (S1: 13%; S3: 12%)	No	No	Yes (S1: 10%; S2: 10%)
P8	Yes (S3: 10%)	No	No	No

S indicates during which of the 3 spirometry measurements after inhalation the drop occurred.

doi:10.1371/journal.pone.0149768.t003

Table 4. Pharmacokinetic parameters (mean \pm standard deviation).

Parameters	Visit 1(30 mg)	Visit 2(60 mg)	Visit 3(120 mg)	Visit 4(240 mg)
Delivered dose(mg)	23 \pm 4.8	53 \pm 2.3	97 \pm 9.7	198 \pm 11.9
AUC ₀₋₁₂ (h mg/L)	0.40 \pm 0.72	1.03 \pm 0.56	2.26 \pm 0.77	5.36 \pm 2.10
C _{max} (μ g/L)	105 \pm 45	173 \pm 48	277 \pm 148	703 \pm 365
t _{max} (h)	1.57 \pm 0.48	1.45 \pm 0.41	1.64 \pm 0.31	1.60 \pm 0.39

The area under the curve from t = 0 to t = 12 h (AUC₀₋₁₂) was calculated using MW/Pharm. The maximum serum concentration (C_{max}) and time to maximum serum concentration (t_{max}) were derived from the concentration-time curves. It was particularly difficult to obtain blood from participants 7 and 8 during visit 3 and 4.

doi:10.1371/journal.pone.0149768.t004

Pharmacokinetic analysis

All mean pharmacokinetic parameters investigated are summarised in [Table 4](#). As expected, the mean C_{max} and mean AUC₀₋₁₂ rose approximately by two-fold after each doubling of the dose. The t_{max} was the same, 1.6 (\pm 0.08) h, for all four doses investigated. [Fig 2](#) shows the serum concentration-time curves of the individual participants after 30 ([Fig 2A](#)), 60 ([Fig 2B](#)), 120 ([Fig 2C](#)) and 240 mg ([Fig 2D](#)) dry powder tobramycin. Some data points are missing due to failed blood draws. Therefore, the mean AUC₀₋₁₂ presented in [Table 4](#) was calculated for 6 participants. Apart from inter-individual differences ([Fig 2](#)), also large intra-individual differences were observed in some participants. For example, participant 5 showed a C_{max} of 0.57 mg/L after a 120 mg dose (delivered dose 95 mg), but a 240 mg dose (delivered dose 204 mg) resulted in a C_{max} of only 0.58 mg/L. [Fig 3](#) shows the C_{max} per mg delivered dose as function of the inhaled volume; the figure indicates a strong trend for increasing normalised C_{max} with decreasing inhaled volume.

Discussion

In this study we assessed the local tolerability and pharmacokinetic parameters of escalating doses of dry powder tobramycin free base using the Cyclops in participants with non-CF bronchiectasis. We demonstrated that inhalation of dry powder tobramycin base from the Cyclops is well tolerated.

Coughing is often reported as an adverse event immediately after inhalation of tobramycin, either by wet nebulisation or dry powder inhalation, both in CF and non-CF bronchiectasis patients [21–23]. In this study, only two participants started coughing after inhalation, each during only one out of four visits. One participant reported cough 7 hours after inhalation, making causality of dry powder tobramycin less likely. We believe that the high inhaler resistance to airflow and excellent powder dispersion by the Cyclops may explain the very low frequency of coughing. The tobramycin particles, of which almost 90% is between 1 and 5 μ m, enter the respiratory tract at a flow rate of only 34 L/min [17]. This combination of beneficial features prevents the deposition of substantial drug fractions in the oropharynx, which is the common trigger for coughing. Based on the experience with colistin sulphomethate and colistin sulphate [24], where using the sulphomethate salt reduced cough compared to using the sulphate salt, we speculate that the use of tobramycin free base instead of the sulphate salt might also help to reduce cough. In addition, the lower powder dose to be inhaled for the free base (65.6% compared to the sulphate) without excipients may also have contributed to reduced cough. Rinsing the mouth with water after administration of the full dose solved the reported bad taste of the two participants after their first visit. The bad taste is known from nebulised tobramycin sulphate.

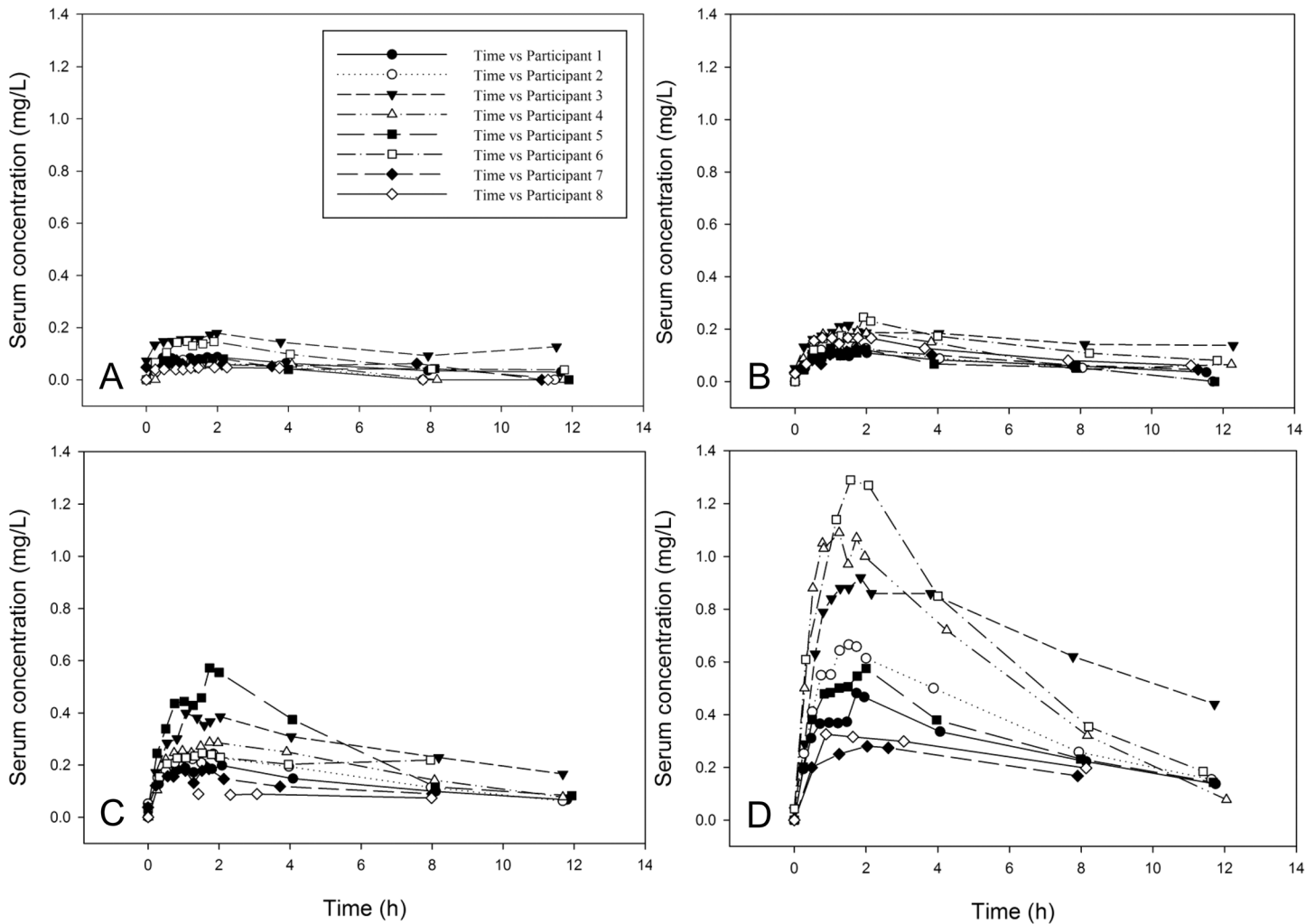


Fig 2. Individual serum concentrations of tobramycin following administration of a 30 (A), 60 (B), 120 (C) or 240 (D) mg dry powder tobramycin dose from the Cyclops.

doi:10.1371/journal.pone.0149768.g002

In four participants a drop in FEV₁ of 10% or more was observed during one or two visits. These four participants were diagnosed with asthma, all of the drops were without complaints of dyspnoea. In half of the cases the drop in FEV₁ was exactly 10%. No correlation was found between the drops in FEV₁ and the different time points of spirometry nor with the dose administered. All drops in FEV₁ observed during the first two measurements (S1 and S2), were spontaneously reversed without the use of bronchodilators. In a previous study with nebulised tobramycin 3 out of 26 participants showed a drop in FEV₁ > 10%, but also 5 out of 27 participants in the placebo group showed a drop in FEV₁ > 10%. They considered a drop in FEV₁ of 10% not to be an adverse event to inhaled tobramycin [25]. Others suggest that respiratory adverse events are more common in non-CF bronchiectasis patients than in CF patients. They state that this is probably caused by underlying morbidities like asthma, the greater age of these patients, and a greater history of smoking [14,23,26]. The clinical relevance needs to be determined in larger phase 2 and 3 studies.

The computed normalised C_{max} values (C_{max} per mg delivered dose) in our study are in a wide range between 1.17 and 7.46 µg/L per mg of delivered dose, with an overall average of

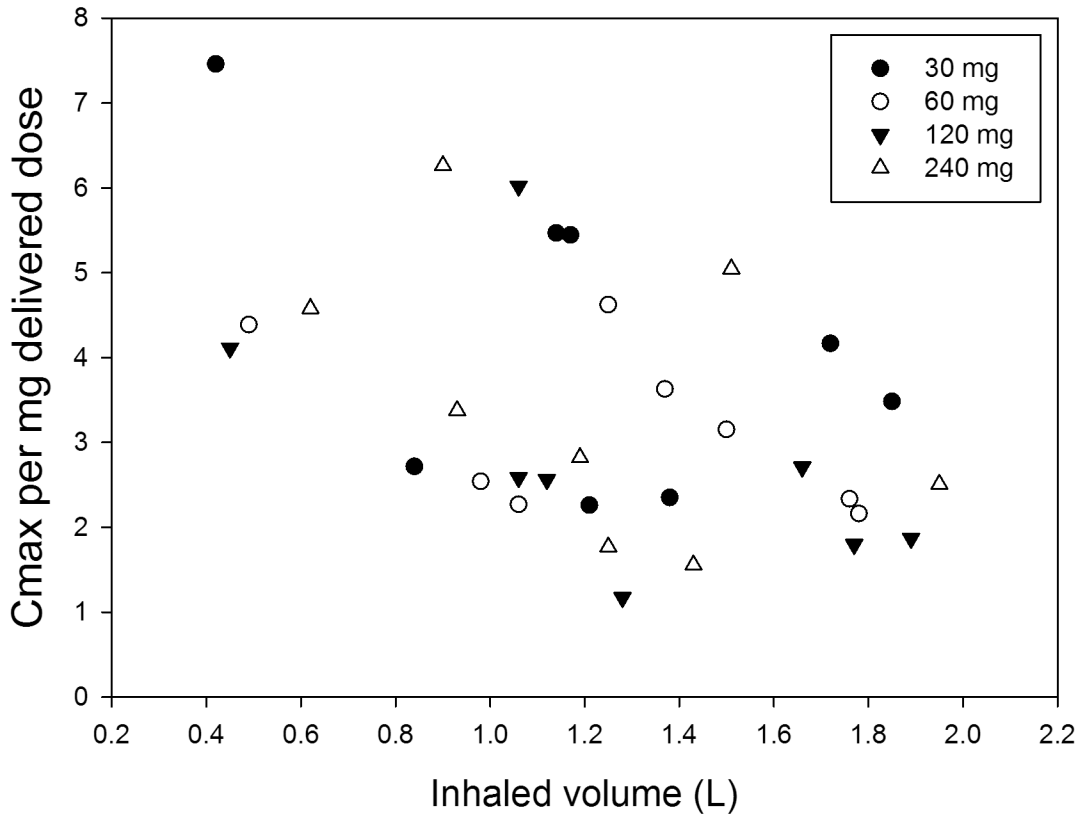


Fig 3. The C_{max} per milligram delivered dose as function of the inhaled volume.

doi:10.1371/journal.pone.0149768.g003

3.41 µg/L. The delivered doses were derived from the inhaler retentions measured. In a study in healthy volunteers, the Podhaler™ 80 mg dose, after correction for the inhaler losses, the sulphate group and the excipients, yielded a normalised C_{max} value of 9.57 µg/L per mg delivered free base [27]. In CF patients, normalised C_{max} values of approximately 22 µg/L per mg delivered free base could be derived (more or less independent of the dose), assuming that Podhaler™ losses were similar to earlier reports [15]. The wide range of normalised C_{max} values from the Cyclops in our study and the lower C_{max} value compared to studies in CF patients and healthy volunteers with the Podhaler™ are remarkable. Further investigation is needed to elucidate whether they result from a difference in inhaler performance, or from differences in the study populations—or both.

The Cyclops delivered doses derived from inhaler residues were quite consistent and are on average (all doses, all patients) 82.1% of the doses weighed into the blisters (RSD = 12.2%). Therefore, delivered dose variation does not seem to explain the wide range of normalised C_{max} values in this study. In a previous study good dispersion performance of the Cyclops was already demonstrated [17]; fairly consistently delivered fine particle fractions (FPF < 5 µm) of approximately 75% of the weighed doses were computed. Losses in the oropharynx between the Cyclops and the Podhaler™ may have been different due to a difference in inhaler mouthpiece design, although the exit velocity at 35 L/min from the Cyclops (24.3 m/s in our study) is the same as that from the Podhaler™ at 80 L/min (24.7 m/s) in the studies with this device. Nevertheless, aerosol plume geometry and jet effects resulting in return flows in the oral cavity, may be different and greater for the Cyclops compared to the Podhaler™ in spite of comparable exit velocities. Beyond the oral cavity however, at a distance from the mouthpiece, the more

than two times lower flow rate from the Cyclops at the same pressure drop must result in lower inertial deposition in the first bifurcations. Since almost no tobramycin related cough was reported or observed during this study, it is safe to assume that indeed no large losses in the oropharynx from the Cyclops occurred. Therefore, a difference in results from the different studies seems most likely the result of the inhalation manoeuvre or a difference in disease related aspects, between the subject populations. In our study, relatively small inhaled volumes ranging from only 0.42 to 1.95 L were computed from the flow curves recorded during drug administration. They were less than 50% of recorded Vital Capacities, in spite of the instructions given to inhale as deep as possible, and cannot be explained by dyspnoea since all participants were able to comply with the recommended breath-hold pause of at least 10 s after inhalation. These low volumes must have resulted in substantial deposition in the upper and central respiratory tract and only marginal aerosol penetration into the most distal airways, where absorption is supposed to be fastest (resulting in a high C_{\max}) [28]. However, the most distal airways may not be the most relevant target area in non-CF bronchiectasis patients, since it is known that bacterial infections in this population are mainly located in the bronchi and less in the bronchioles and alveoli [29]. Surprisingly, a strong trend was found for increasing normalised C_{\max} with decreasing inhaled volume (Fig 3). Comparison with the Podhaler™ studies in this respect is not possible, as flow curves during drug administration were not recorded in the studies performed with this device. With the Podhaler™, almost 40% of the whole lung dose was recovered from the peripheral airways, which suggests that inhaled volumes were considerably higher, presumably causing the higher C_{\max} values.

The finding of increased normalised C_{\max} with decreasing inhaled volume was unexpected, and clearly needs further clinical investigations. In patients with bronchiectasis the bronchial circulation can be increased from 1% to as much as 30% of the cardiac output due to increased inflammation [30,31]. It can be hypothesised that the higher blood circulation increases the absorption rate as drugs like tobramycin and other antibiotics penetrate faster also in opposite direction from the systemic circulation into lung tissue in patients with pulmonary infections like pneumonia [32,33]. Because non-CF bronchiectasis is a progressively deteriorating condition accompanied by increased inflammation, it could be that the C_{\max} changes with the degree of inflammation. This could also explain why in previous studies with the TOBI® Podhaler™ normalised C_{\max} values were much higher for CF patients compared to healthy volunteers [15,27]. These aspects remain unclear from all deposition studies however, and should be addressed in future clinical investigations with inhaled antibiotics.

Our data are limited to AUC, t_{\max} and C_{\max} results in serum; the topical tobramycin concentrations in the airways—i.e. at the site of infection—were not measured. A phase 2 study evaluating safety and efficacy in non-CF bronchiectasis patients should be performed next. Based on the current data, we recommend 120 and 240 mg dry powder tobramycin doses by the Cyclops.

Conclusions

This is the first pilot study describing the use of dry powder tobramycin free base in non-CF bronchiectasis patients. The free base was well tolerated and this positive result invites for further clinical studies with the Cyclops dry powder inhaler to evaluate safety and efficacy of this compound in non-CF bronchiectasis patients.

Supporting Information

S1 Text. TREND Statement Checklist.
(PDF)

S2 Text. Study Protocol Tobra-02. (PDF)

Acknowledgments

We thank the participants for taking part in this study. We thank Monica Leever for performing the spirometry, the technical professionals of the UMCG (Research Workshop) for manufacturing the Cyclops prototypes, and Anne Lexmond for her help with writing some of the study protocols.

Author Contributions

Conceived and designed the experiments: MH OWA JWCA TSW HAMK HWF AHB. Performed the experiments: MH OWA PH. Analyzed the data: MH OWA PH JWCA TSW HAMK HWF AHB. Contributed reagents/materials/analysis tools: MH OWA JWCA PH AHB. Wrote the paper: MH OWA PH JWCA TSW HAMK HWF AHB.

References

1. Pappalètera M, Aliberti S, Castellotti P, Ruvolo L, Giunta V, Blasi F. Bronchiectasis: an update. *Clin Respir J*. Blackwell Publishing Ltd; 2009; 3: 126–134. doi: [10.1111/j.1752-699X.2009.00131.x](https://doi.org/10.1111/j.1752-699X.2009.00131.x)
2. Angrill J, Agustí C, De Celis R, Filella X, Rañó A, Elena M, et al. Bronchial inflammation and colonization in patients with clinically stable bronchiectasis. *Am J Respir Crit Care Med*. American Thoracic Society; New York, NY; 2001; 164: 1628–32. doi: [10.1164/ajrccm.164.9.2105083](https://doi.org/10.1164/ajrccm.164.9.2105083)
3. Altenburg J, de Graaff CS, van der Werf TS, Boersma WG. Immunomodulatory effects of macrolide antibiotics—part 1: biological mechanisms. *Respiration*. Karger Publishers; 2011; 81: 67–74. doi: [10.1159/000320319](https://doi.org/10.1159/000320319)
4. Angrill J. Bacterial colonisation in patients with bronchiectasis: microbiological pattern and risk factors. *Thorax*. 2002; 57: 15–19. doi: [10.1136/thorax.57.1.15](https://doi.org/10.1136/thorax.57.1.15) PMID: [11809984](https://pubmed.ncbi.nlm.nih.gov/11809984/)
5. Nicotra MB. Clinical, Pathophysiologic, and Microbiologic Characterization of Bronchiectasis in an Aging Cohort. *CHEST J*. American College of Chest Physicians; 1995; 108: 955. doi: [10.1378/chest.108.4.955](https://doi.org/10.1378/chest.108.4.955)
6. Ho P. The Effect of *Pseudomonas aeruginosa* Infection on Clinical Parameters in Steady-State Bronchiectasis. *CHEST J*. American College of Chest Physicians; 1998; 114: 1594. doi: [10.1378/chest.114.6.1594](https://doi.org/10.1378/chest.114.6.1594)
7. Miszkal KA, Wells AU, Rubens MB, Cole PJ HD. Effects of airway infection by *Pseudomonas aeruginosa*: A computed tomographic study. *Thorax*. 1997; 52: 260–264. PMID: [9093343](https://pubmed.ncbi.nlm.nih.gov/9093343/)
8. Lynch DA, Newell J, Hale V, Dyer D, Corkery K, Fox NL, et al. Correlation of CT findings with clinical evaluations in 261 patients with symptomatic bronchiectasis. [Internet]. American Public Health Association; 2013. Available: <http://www.ajronline.org/doi/abs/10.2214/ajr.173.1.10397099>
9. Wilson CB, Jones PW, O'Leary CJ, Hansell DM, Cole PJ, Wilson R. Effect of sputum bacteriology on the quality of life of patients with bronchiectasis. *Eur Respir J*. 1997; 10: 1754–1760. Available: <http://erj.ersjournals.com/content/10/8/1754.abstract> PMID: [9272915](https://pubmed.ncbi.nlm.nih.gov/9272915/)
10. Pasteur MC, Bilton D, Hill AT. British Thoracic Society guideline for non-CF bronchiectasis. *Thorax*. 2010; 65 Suppl 1: i1–58. doi: [10.1136/thx.2010.136119](https://doi.org/10.1136/thx.2010.136119) PMID: [20627931](https://pubmed.ncbi.nlm.nih.gov/20627931/)
11. Maclusky IB, Gold R, Corey M, Levison H. Long-term effects of inhaled tobramycin in patients with cystic fibrosis colonized with *Pseudomonas aeruginosa*. *Pediatr Pulmonol*. 1989; 7: 42–48. doi: [10.1002/ppul.1950070110](https://doi.org/10.1002/ppul.1950070110) PMID: [2505216](https://pubmed.ncbi.nlm.nih.gov/2505216/)
12. Smith AL, Ramsey BW, Hedges DL, Hack B, Williams-Warren J, Weber A, et al. Safety of aerosol tobramycin administration for 3 months to patients with cystic fibrosis. *Pediatr Pulmonol*. 1989; 7: 265–271. doi: [10.1002/ppul.1950070413](https://doi.org/10.1002/ppul.1950070413) PMID: [2515523](https://pubmed.ncbi.nlm.nih.gov/2515523/)
13. Steinkamp G, Tümmler B, Gappa M, Von Der Hardt H, Potel J, Albus A, et al. Long-term tobramycin aerosol therapy in cystic fibrosis. *Pediatr Pulmonol*. 1989; 6: 91–98. doi: [10.1002/ppul.1950060207](https://doi.org/10.1002/ppul.1950060207) PMID: [2494640](https://pubmed.ncbi.nlm.nih.gov/2494640/)
14. Vendrell M, Muñoz G, de Gracia J. Evidence of inhaled tobramycin in non-cystic fibrosis bronchiectasis. *Open Respir Med J*. 2015; 9: 30–6. doi: [10.2174/1874306401509010030](https://doi.org/10.2174/1874306401509010030) PMID: [25893022](https://pubmed.ncbi.nlm.nih.gov/25893022/)

15. Geller DE, Konstan MW, Smith J, Noonberg SB, Conrad C. Novel tobramycin inhalation powder in cystic fibrosis subjects: Pharmacokinetics and safety. *Pediatr Pulm*. Wiley Subscription Services, Inc., A Wiley Company; 2007; 42: 307–313. doi: [10.1002/ppul.20594](https://doi.org/10.1002/ppul.20594)
16. Hoppentocht M, Hagedoorn P, Frijlink HW, de Boer AH. Developments and strategies for inhaled antibiotic drugs in tuberculosis therapy: A critical evaluation. *Eur J Pharm Biopharm*. 2013; 86: 23–30. doi: [10.1016/j.ejpb.2013.10.019](https://doi.org/10.1016/j.ejpb.2013.10.019) PMID: [24189498](https://pubmed.ncbi.nlm.nih.gov/24189498/)
17. Hoppentocht M, Akkerman OW, Hagedoorn P, Frijlink HW, de Boer AH. The Cyclops for pulmonary delivery of aminoglycosides; a new member of the Twincer™ family. *Eur J Pharm Biopharm*. 2015; 90: 8–15. doi: [10.1016/j.ejpb.2015.01.012](https://doi.org/10.1016/j.ejpb.2015.01.012) PMID: [25615881](https://pubmed.ncbi.nlm.nih.gov/25615881/)
18. TOBI Podhaler 28 mg inhalation powder, hard capsules—Summary of Product Characteristics (SPC)—(eMC) [Internet]. [cited 20 Mar 2015]. Available: <http://www.medicines.org.uk/emc/medicine/24989/SPC/TOBI+Podhaler+28+mg+inhalation+powder,+hard+capsules>
19. Hoppentocht M, Akkerman OW, Voerman A, Greijdanus B, Touw DJ, Alffenaar JC. Optimisation of the sensitivity of an immunoassay analysis for tobramycin in serum. *J Appl Bioanal*. 2015; 1: 123–127. doi: [10.17145/jab.15.020](https://doi.org/10.17145/jab.15.020)
20. Proost JH, Meijer DKF. MW/Pharm, an integrated software package for drug dosage regimen calculation and therapeutic drug monitoring. *Comput Biol Med*. 1992; 22: 155–163. doi: [10.1016/0010-4825\(92\)90011-B](https://doi.org/10.1016/0010-4825(92)90011-B) PMID: [1617949](https://pubmed.ncbi.nlm.nih.gov/1617949/)
21. Konstan MW, Flume PA, Kappler M, Chiron R, Higgins M, Brockhaus F, et al. Safety, efficacy and convenience of tobramycin inhalation powder in cystic fibrosis patients: The EAGER trial. *J Cyst Fibros*. 2011; 10: 54–61. Available: <http://www.sciencedirect.com/science/article/B6X2D-51FP66P-1/2/6d3587c5738f913b89f7e40ea647bdfd> doi: [10.1016/j.jcf.2010.10.003](https://doi.org/10.1016/j.jcf.2010.10.003) PMID: [21075062](https://pubmed.ncbi.nlm.nih.gov/21075062/)
22. Konstan MW, Geller DE, Minić P, Brockhaus F, Zhang J, Angyalosi G. Tobramycin inhalation powder for *P. aeruginosa* infection in cystic fibrosis: The EVOLVE trial. *Pediatr Pulm*. Wiley Subscription Services, Inc., A Wiley Company; 2010; 230–238. doi: [10.1002/ppul.21356](https://doi.org/10.1002/ppul.21356)
23. Barker AF, Couch L, Fiel SB, Gotfried MH, Ilowite J, Meyer KC, et al. Tobramycin solution for inhalation reduces sputum *Pseudomonas aeruginosa* density in bronchiectasis. *Am J Respir Crit Care Med*. American Thoracic Society New York, NY; 2000; 162: 481–5. doi: [10.1164/ajrccm.162.2.9910086](https://doi.org/10.1164/ajrccm.162.2.9910086)
24. Westerman EM, Le Brun PPH, Touw DJ, Frijlink HW, Heijerman HGM. Effect of nebulized colistin sulphate and colistin sulphomethate on lung function in patients with cystic fibrosis: a pilot study. *J Cyst Fibros*. 2004; 3: 23–28. Available: <http://www.sciencedirect.com/science/article/pii/S1569199303001255> PMID: [15463883](https://pubmed.ncbi.nlm.nih.gov/15463883/)
25. Bilton D, Henig N, Morrissey B, Gotfried M. Addition of inhaled tobramycin to ciprofloxacin for acute exacerbations of *Pseudomonas aeruginosa* infection in adult bronchiectasis. *Chest*. 2006; 130: 1503–10. doi: [10.1378/chest.130.5.1503](https://doi.org/10.1378/chest.130.5.1503) PMID: [17099030](https://pubmed.ncbi.nlm.nih.gov/17099030/)
26. Scheinberg P, Shore E. A pilot study of the safety and efficacy of tobramycin solution for inhalation in patients with severe bronchiectasis. *Chest*. 2005; 127: 1420–6. doi: [10.1378/chest.127.4.1420](https://doi.org/10.1378/chest.127.4.1420) PMID: [15821224](https://pubmed.ncbi.nlm.nih.gov/15821224/)
27. Newhouse MT, Hirst PH, Duddu SP, Walter YH, Tarara TE, Clark AR, et al. Inhalation of a dry powder tobramycin PulmoSphere formulation in healthy volunteers. *Chest*. American College of Chest Physicians; 2003; 124: 360–366. doi: [10.1378/chest.124.1.360](https://doi.org/10.1378/chest.124.1.360)
28. Patton JS, Brain JD, Davies LA, Fiegel J, Gumbleton M, Kim K-J, et al. The particle has landed—characterizing the fate of inhaled pharmaceuticals. *J Aerosol Med Pulm Drug Deliv*. 2010; 23 Suppl 2: S71–87. doi: [10.1089/jamp.2010.0836](https://doi.org/10.1089/jamp.2010.0836) PMID: [21133802](https://pubmed.ncbi.nlm.nih.gov/21133802/)
29. Barker AF. Bronchiectasis. *N Engl J Med*. 2002; 346: 1383–1393. doi: [10.1056/NEJMra012519](https://doi.org/10.1056/NEJMra012519) PMID: [11986413](https://pubmed.ncbi.nlm.nih.gov/11986413/)
30. Labiris NR, Dolovich MB. Pulmonary drug delivery. Part I: Physiological factors affecting therapeutic effectiveness of aerosolized medications. *Br J Clin Pharmacol*. Blackwell Science Ltd; 2003; 56: 588–599. doi: [10.1046/j.1365-2125.2003.01892.x](https://doi.org/10.1046/j.1365-2125.2003.01892.x)
31. Boisselle PM, Lynch D, editors. *CT of the Airways*. Humana Press; 2008. doi: [10.1007/978-1-59745-139-0](https://doi.org/10.1007/978-1-59745-139-0)
32. Alexander MR, Berglund EM, Kasik JE, Fox A, Chinn WM. The concentration of tobramycin in bronchial secretions. *Chest*. 1979; 75: 675–8. Available: <http://www.ncbi.nlm.nih.gov/pubmed/374019> PMID: [374019](https://pubmed.ncbi.nlm.nih.gov/374019/)
33. Panidis D, Markantonis SL, Boutzouka E, Karatzas S, Baltopoulos G. Penetration of gentamicin into the alveolar lining fluid of critically ill patients with ventilator-associated pneumonia. *Chest*. American College of Chest Physicians; 2005; 128: 545–52. doi: [10.1378/chest.128.2.545](https://doi.org/10.1378/chest.128.2.545)