

University of Groningen

Profoundly Disturbed Lipoproteins in Cirrhotic Patients

van den Berg, Eline H; Flores-Guerrero, Jose L; Gruppen, Eke G; Garcia, Erwin; Connelly, Margery A; de Meijer, Vincent E; Bakker, Stephan J L; Blokzijl, Hans; Dullaart, Robin P F

Published in:
Journal of Clinical Medicine

DOI:
[10.3390/jcm11051223](https://doi.org/10.3390/jcm11051223)

IMPORTANT NOTE: You are advised to consult the publisher's version (publisher's PDF) if you wish to cite from it. Please check the document version below.

Document Version
Publisher's PDF, also known as Version of record

Publication date:
2022

[Link to publication in University of Groningen/UMCG research database](#)

Citation for published version (APA):

van den Berg, E. H., Flores-Guerrero, J. L., Gruppen, E. G., Garcia, E., Connelly, M. A., de Meijer, V. E., Bakker, S. J. L., Blokzijl, H., & Dullaart, R. P. F. (2022). Profoundly Disturbed Lipoproteins in Cirrhotic Patients: Role of Lipoprotein-Z, a Hepatotoxic LDL-like Lipoprotein. *Journal of Clinical Medicine*, 11(5), [1223]. <https://doi.org/10.3390/jcm11051223>

Copyright

Other than for strictly personal use, it is not permitted to download or to forward/distribute the text or part of it without the consent of the author(s) and/or copyright holder(s), unless the work is under an open content license (like Creative Commons).

The publication may also be distributed here under the terms of Article 25fa of the Dutch Copyright Act, indicated by the "Taverne" license. More information can be found on the University of Groningen website: <https://www.rug.nl/library/open-access/self-archiving-pure/taverne-amendment>.

Take-down policy

If you believe that this document breaches copyright please contact us providing details, and we will remove access to the work immediately and investigate your claim.

Downloaded from the University of Groningen/UMCG research database (Pure): <http://www.rug.nl/research/portal>. For technical reasons the number of authors shown on this cover page is limited to 10 maximum.



Article

Profoundly Disturbed Lipoproteins in Cirrhotic Patients: Role of Lipoprotein-Z, a Hepatotoxic LDL-like Lipoprotein

Eline H. van den Berg ^{1,*}, Jose L. Flores-Guerrero ², Eke G. Gruppen ², Erwin Garcia ³, Margery A. Connelly ³, Vincent E. de Meijer ⁴, Stephan J. L. Bakker ², Hans Blokzijl ¹ and Robin P. F. Dullaart ⁵

- ¹ Department of Gastroenterology and Hepatology, University of Groningen, University Medical Center Groningen, 9700 RB Groningen, The Netherlands; h.blokzijl@umcg.nl
 - ² Department of Nephrology, University of Groningen, University Medical Center Groningen, 9700 RB Groningen, The Netherlands; joseluis.dbt@gmail.com (J.L.F.-G.); e.g.gruppen@umcg.nl (E.G.G.); s.j.l.bakker@umcg.nl (S.J.L.B.)
 - ³ Laboratory Corporation of America Holdings (Labcorp), Morrisville, NC 27560, USA; garce14@labcorp.com (E.G.); connem5@labcorp.com (M.A.C.)
 - ⁴ Department of Hepatopancreatobiliary Surgery and Liver Transplantation, University of Groningen, University Medical Center Groningen, 9700 RB Groningen, The Netherlands; v.e.de.meijer@umcg.nl
 - ⁵ Department of Endocrinology, University of Groningen, University Medical Center Groningen, 9700 RB Groningen, The Netherlands; dull.fam@12move.nl
- * Correspondence: e.h.wouters@umcg.nl; Tel.: +31-50-3610426



Citation: van den Berg, E.H.; Flores-Guerrero, J.L.; Gruppen, E.G.; Garcia, E.; Connelly, M.A.; de Meijer, V.E.; Bakker, S.J.L.; Blokzijl, H.; Dullaart, R.P.F. Profoundly Disturbed Lipoproteins in Cirrhotic Patients: Role of Lipoprotein-Z, a Hepatotoxic LDL-like Lipoprotein. *J. Clin. Med.* **2022**, *11*, 1223. <https://doi.org/10.3390/jcm11051223>

Academic Editor: Alan Bonder

Received: 7 January 2022

Accepted: 23 February 2022

Published: 24 February 2022

Publisher's Note: MDPI stays neutral with regard to jurisdictional claims in published maps and institutional affiliations.



Copyright: © 2022 by the authors. Licensee MDPI, Basel, Switzerland. This article is an open access article distributed under the terms and conditions of the Creative Commons Attribution (CC BY) license (<https://creativecommons.org/licenses/by/4.0/>).

Abstract: Detailed information regarding lipoprotein concentrations and subfractions in cirrhotic patients before and after orthotopic liver transplantation (OLT) is lacking. Lipoprotein-Z (LP-Z) is a recently characterised abnormal, hepatotoxic free cholesterol-rich low-density lipoprotein (LDL)-like lipoprotein. We determined the lipoprotein profiles, including LP-Z, in cirrhotic patients and OLT recipients and assessed the prognostic significance of LP-Z on the OLT waiting list. We performed analyses in cirrhotic transplant candidates and non-cirrhotic OLT recipients. A population-based cohort was used as reference. The setting was a University hospital. Lipoprotein particle concentrations and subfractions were measured by nuclear magnetic resonance spectroscopy. In the cirrhotic patients (N = 130), most measures of triglyceride-rich lipoproteins (TRL), LDL, and high-density lipoproteins (HDL) were much lower compared to the OLT recipients (N = 372) and controls (N = 6027) ($p < 0.01$). In the OLT recipients, many lipoprotein variables were modestly lower, but HDL-cholesterol, triglycerides, and TRL and HDL size were greater vs. the control population. LP-Z was measurable in 40 cirrhotic patients and 3 OLT recipients (30.8% vs. 0.8%, $p < 0.001$). The cirrhotic patients with measurable LP-Z levels had profoundly lower HDL-cholesterol and particle concentrations ($p < 0.001$), and worse Child Pugh Turcotte classifications and MELD scores. The presence of LP-Z (adjusted for age, sex, and MELD score) predicted worse survival in cirrhotic patients (HR per 1 LnSD increment: 1.11, 95%CI 1.03–1.19, $p = 0.003$). In conclusion, cirrhotic patients have considerably lower plasma concentrations of all major lipoprotein classes with changes in lipoprotein subfraction distribution. After OLT, these lipoprotein abnormalities are in part reversed. LP-Z is associated with cirrhosis. Its presence may translate in disturbed HDL metabolism and worse survival.

Keywords: cirrhosis; lipid profile; NMR; HDL-cholesterol; LP-Z; orthotopic liver transplantation

1. Introduction

The liver plays a central role in lipoprotein metabolism [1–3]. The liver produces very low-density lipoproteins (VLDL) and high-density lipoproteins (HDL), as well as enzymes which are critically involved in extrahepatic lipoprotein metabolism, such as lecithin cholesterol acyltransferase (LCAT), an enzyme that is involved in the metabolism of HDL by its ability to esterify free cholesterol to cholesteryl esters [4,5] and hepatic lipase (HL), which

is able to hydrolyze triglycerides in various lipoproteins [5]. Important mechanisms which contribute to the pathogenesis of lipoprotein abnormalities in severe chronic liver diseases include a decrease in (apo)lipoprotein synthesis, impaired degradation, altered uptake of lipoprotein complexes by the liver, as well as LCAT deficiency [2,3,6–8]. In cirrhosis, low plasma levels of total cholesterol, as well as triglycerides, are common [9]. Previous studies have also described low levels of VLDL, low-density lipoprotein cholesterol (LDL-C), HDL cholesterol (HDL-C), and apolipoprotein B (apoB) and apolipoprotein A-I (apoA-I), which are major apolipoproteins associated with VLDL, LDL, and HDL, respectively [3]. In advanced stages of liver disease, circulating levels of all major lipoprotein classes decline [10–12], but variable patterns of lipoprotein changes exist, probably related to liver disease aetiology and concomitant comorbidities [3,12].

In patients with end-stage liver disease, orthotopic liver transplantation (OLT) is the only available curative treatment [13]. After OLT, recipients often develop dyslipidaemia with higher total and LDL-C concentrations [14–16], which may lead to an increased occurrence of cardiovascular and metabolic comorbidities, including atherosclerotic manifestations, heart failure, and type 2 diabetes (T2D) [14,17–19]. Post-OLT, hypercholesterolemia has been reported in 31% at 1 year, 46% at 2 years, and 37% after 3 years [14,20–22]. Corticosteroids are major determinants of increased cholesterol levels, and early withdrawal of prednisolone decreases the incidence and severity of hypercholesterolemia after OLT [15,23,24]. Additionally, dyslipidaemia post-transplantation is exacerbated by mammalian target of rapamycin (mTOR) inhibitors [25].

Despite many studies on lipoprotein abnormalities in severe chronic liver disease, no data have been currently reported concerning nuclear magnetic resonance (NMR)-determined alterations in lipoprotein subfractions in patients with liver cirrhosis or in OLT recipients. Availability of such data is clinically relevant in view of differential associations of LDL, VLDL, and HDL subfractions and particle concentrations with incident atherosclerotic cardiovascular disease and T2D [26–32]. Of particular relevance, an abnormal LDL-like lipoprotein, designated Lipoprotein-Z (LP-Z), has been recently characterised using NMR methodology [33]. LP-Z is probably similar to an abnormal lipoprotein sometimes present in patients with obstructive jaundice [33,34]. Similar to LDL, LP-Z contains apoB but carries more free cholesterol, phosphatidyl choline, and triglycerides, and has a reduced cholesteryl ester content compared to LDL [33]. Given that the characterisation of LP-Z by NMR methodology has only been recently described, neither its pathogenesis nor its metabolic and clinical corollaries are yet imminent. Presence of LP-Z in plasma has been found in some patients with obstructive jaundice, hypertriglyceridemia, and alcoholic liver disease [9,33,34]. Interestingly, LP-Z could so far not be detected in healthy subjects, nor in subjects with primary biliary cholangitis (PBC), primary sclerosing cholangitis (PSC), autoimmune hepatitis (AIH), or T2D [33].

We initiated the present study firstly to characterise distinct NMR lipoprotein profiles in cirrhotic patients with end-stage liver disease screened for OLT and in OLT recipients (TransplantLines cohort study), and in a general population-based control cohort. Secondly, we determined to which extent LP-Z is detectable in plasma from cirrhotic patients compared to stable OLT recipients and to characterise the degree of lipoprotein abnormalities according to LP-Z presence in plasma. Thirdly, we interrogated whether detectable LP-Z may have prognostic significance, in addition to the Model for End-Stage Liver Disease (MELD) score in cirrhotic patients.

2. Materials and Methods

2.1. Study Population

This study was performed among participants of the TransplantLines cohort study, a large prospective transplant biobank and cohort study carried out in the University Medical Center Groningen, the Netherlands (NCT03272841) [35]. The TransplantLines study was approved by the Medical Ethics Committee of the University Medical Center Groningen (METc 2014/077) and is performed in accordance with the guidelines of the Declaration of

Helsinki. All participants provided written informed consent. TransplantLines is a prospective biobank and cohort study, which aims to provide a better understanding of the causes of disease-related and ageing-related outcomes and health problems, both physical and psychological, in patients with end-stage disease screened for solid organ transplantation and solid organ transplant recipients. All transplant recipients, including heart, lungs, kidney, liver, and small bowel, were invited to participate in the TransplantLines study. The exclusion criteria were no mastery of the Dutch language and inability to intellectually understand questionnaires or physical tests [35].

This report follows the Strengthening the Reporting of Observational Studies in Epidemiology (STROBE) reporting guideline. The present study was a cross-sectional analysis of patients in the liver transplant subgroup of TransplantLines. For the present study, data from: 1) pre-transplant cirrhotic patients and 2) OLT recipients at least 3 months after OLT, with available NMR lipoprotein measurements, were used. This resulted in 502 participants (flow sheet of participants: see Figure 1). Of the participants with cirrhotic end-stage liver disease (N = 130), 15 patients were prospectively studied over a period ranging from 3 to >24 months post liver transplantation. Of these, 14 patients were also included in the non-cirrhotic OLT recipient group (N = 372), because 1 patient developed cirrhosis post-OLT.

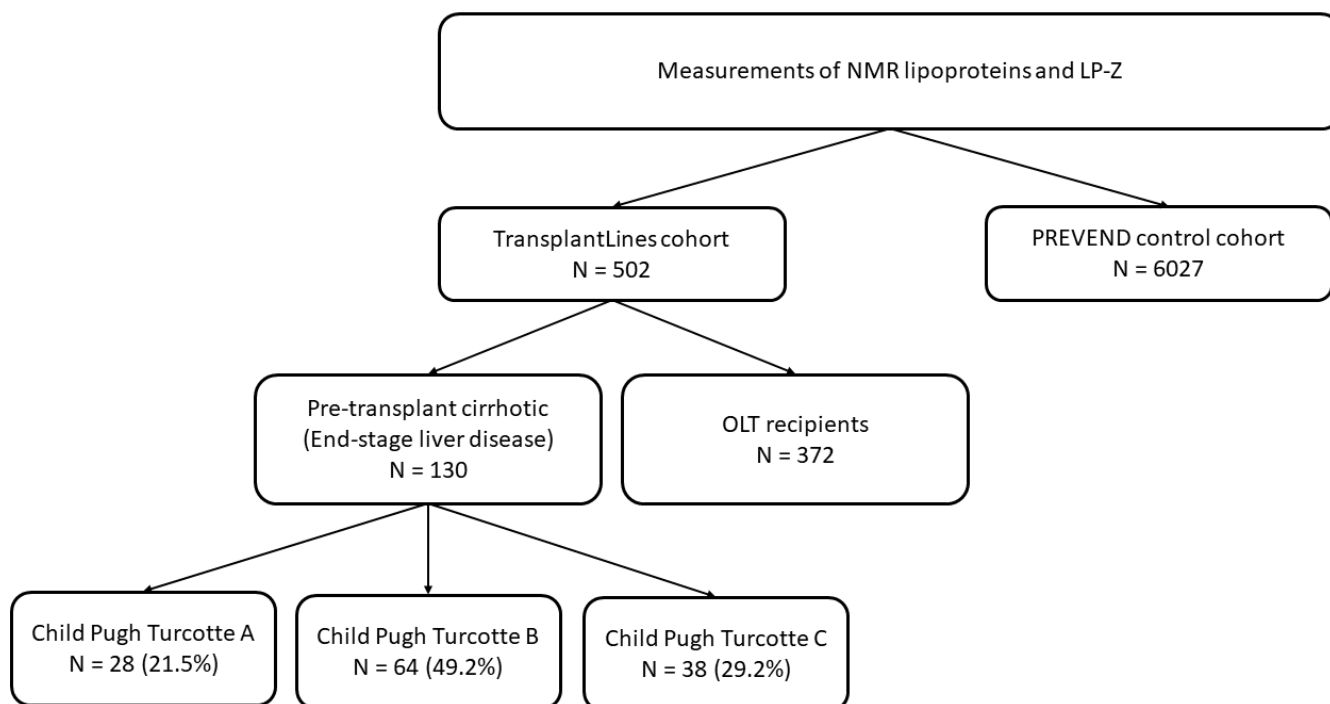


Figure 1. Flow chart of the study population.

As a control group, the study population of the Prevention of RENal and Vascular ENd-stage Disease (PREVEND) cohort study was used [36,37]. The PREVEND study was approved by the Medical Ethics Committee of the University Medical Center Groningen (MEC96/01/022) and is performed in accordance with the guidelines of the Declaration of Helsinki. Written informed consent was obtained from all participants. PREVEND is a large prospective general population-based study, which was initiated to investigate cardiovascular and renal disease. All inhabitants (28 to 75 years old) of Groningen, the Netherlands were sent a questionnaire on demographics and cardiovascular morbidity. Pregnant women, type 1 diabetic subjects, and T2D subjects using insulin were excluded from participation [36,37]. For the present study, we used the data of participants as a control group who completed the second screening round in the PREVEND study, in which NMR lipoprotein data were available (N = 6027).

2.2. Data Collection and Measurements

TransplantLines has a continuous data collection which started on June 2015. For the present study, data were collected up to December 2020. During visits at the outpatient clinic, questionnaires and blood samples were collected from all participants according to the TransplantLines protocol. At the time of blood collection, patients continued their regular medication. A standardized protocol was used to obtain anthropometric measurements. Patient information, including weight, height, body mass index (BMI), smoking status, medication use (glucose and lipid lowering drugs), and medical history, such as cardiovascular disease (CVD) and diabetes, was extracted from the TransplantLines Biobank. Additional review of all electronic patient records of study participants was performed in order to retrieve relevant additional data concerning the aetiology of liver disease, non-cirrhotic or cirrhotic state (based on imaging, histology, or transient elastography) at the time of NMR lipoprotein measurements, and biochemical and clinical variables to calculate the MELD and Child Pugh Turcotte (CPT) scores. To assess the severity of chronic liver disease, the CPT and MELD scores were used. The MELD score was calculated by serum bilirubin, creatinine, and international normalized ratio (INR) [38,39]. The CPT score was calculated by total bilirubin, serum albumin, INR, ascites, and hepatic encephalopathy [40].

In the PREVEND cohort, baseline data were collected on demographics, lifestyle factors, anthropometric measurements, medical history, and medication use, which was combined with information from a pharmacy-dispensing registry as previously described [36,37].

2.3. Laboratory Analysis

In TransplantLines, all blood samples were collected by experienced nurses at the outpatient clinic after an overnight fast. Alanine aminotransferase (ALT), aspartate aminotransferase (AST), gamma-glutamyl transferase (GGT), alkaline phosphatase (ALP), total and direct bilirubin, albumin, glycated haemoglobin (HbA1c), and fasting glucose were analysed with standardized laboratory measurements and quality assessment control at the Department of Laboratory Medicine of the University Medical Center Groningen [35]. In PREVEND, venous blood samples were drawn after an overnight fast while participants rested for 15 minutes. Laboratory methods for PREVEND are reported as described in detail previously [36,37,41].

Ethylenediaminetetraacetic acid (EDTA) anticoagulated plasma and serum samples were obtained by centrifugation at $1400\times g$ for 15 min at 4 °C. EDTA-anticoagulated plasma samples for lipid and lipoprotein profiles in TransplantLines and PREVEND were stored at $-80\text{ }^{\circ}\text{C}$ until analysis and were measured using a Vantera Clinical Analyzer (Labcorp, Morrisville, NC, USA), a fully automated, high-throughput, 400 MHz proton (1H) NMR spectroscopy platform. Plasma samples were prepared on board the instrument, and automatically delivered to the flow probe in the NMR spectrometer's magnetic field [42]. Data acquisition on the Vantera and the spectra data processing have been reported in greater detail elsewhere [43,44]. Lipoprotein parameters were measured by NMR spectroscopy at Labcorp on plasma EDTA specimens [43–45]. Total cholesterol, HDL-C, triglycerides, apoB, and apoA-I were measured employing the LP4 algorithm [29,30,46]. The %CV for apoB ranges from 1.1 to 2.4 and for apoA-I ranges from 1.4 to 2.2. LDL-C was calculated using the Friedewald equation. Non-HDL cholesterol was calculated as total cholesterol minus HDL-C. Very large, large, medium, small, and very small triglyceride rich lipoprotein particles (TRLP) and large, medium, and small LDL particles (LDLP) were quantified using the conventional deconvolution method and the amplitudes of their spectroscopically distinct lipid methyl group NMR signals [29,31,44,45]. Total TRLP were calculated as the sum of the concentrations of very large, large, medium, small, and very small TRLP. Total LDLP were calculated as the sum of all LDL subfractions. Mean TRL and LDL size were calculated using the weighted averages derived from the sum of the diameters of each subfraction. Estimated ranges of particle diameter for the TRL and LDL subfractions were as follows: very large TRLP, 90–240 nm; large TRLP, 50–89 nm; medium TRLP, 37–49 nm; small TRLP, 30–36 nm; very small TRLP, 24–29 nm; large LDLP, 21.5–23 nm; medium LDLP,

20.5–21.4 nm; and small LDLP, 19–20.4 nm. The %CV for TRLP ranges from 4.5 to 11.7 and for LDLP ranges from 1.3 to 3.2. Total HDL particles (HDLP) were calculated by the sum of the concentrations of small, medium, and large HDL particles. Mean HDL size was calculated using the weighted averages derived from the sum of the diameters of small, medium, and large HDLP multiplied by its relative mass percentage. Estimated ranges of particle diameter for the subclasses were as follows: small HDL, 7.4–8.0 nm; medium HDL, 8.1–9.5 nm; and large HDL, 9.6–13 nm. Mean diameter for the HDL subfractions were as follows: H1P, 7.4 nm; H2P, 7.8 nm; H3P, 8.7 nm; H4P, 9.5 nm; H5P, 10.3 nm; H6P, 10.8 nm; and H7P, 12.0 nm. Small HDL comprises H1 and H2, medium HDL comprises H3 and H4, and large HDL comprises H5 to H7. The %CV for HDLP ranges from 0.8 to 1.5.

LP-Z particles were quantified using the LP4 algorithm as previously described by Bedi et al. [33]. In short, the NMR signals from LP-Z span the NMR chemical shift range corresponding to small LDL (18.5–21.5 nm diameter). However, the signals for LP-Z and small LDL differ in their signal line shapes, which allows the software algorithm to distinguish LP-Z from LDL. The assay uses the LP4 deconvolution model that fits the components of the normal lipoproteins first, followed by a model that includes components for LP-Z and LP-X [33]. The %CV for LP-Z particles ranges from 1.5 to 6.7. To ensure the stability of LP-Z particles, fresh serum samples, without detectable LP-X and a large concentration of LP-Z particles, were tested via NMR and then placed at <-20 °C. The samples were thawed and retested after 1, 2, 3, and 4 freeze-thaw cycles. Unlike LP-X particles that have been shown to be unstable after a single freeze-thaw cycle, the LP-Z particle concentrations remained the same for up to 4 freeze-thaw cycles [47].

2.4. Statistical Analysis

Statistical analyses were performed with IBM SPSS software (version 23.0 Armonk, NY, USA: IBM Corp) and R language for statistical computing software (version 4.0.3 (2020), Vienna, Austria). Continuous variables are expressed as median with interquartile range (IQR) or as numbers with percentages. Normality of distribution was assessed and checked for skewness. Differences in variables between the pre-transplant cirrhotic patients and the OLT recipients were determined by Mann–Whitney U test, Kruskal Wallis test or by Chi-square tests where appropriate. Univariate correlations for continuous response variables were analysed by Spearman rank correlation coefficients. The difference in lipid profile, adjusted for age and sex, of the pre-transplant cirrhotic patients and OLT recipients compared to the control subjects from the PREVEND cohort study was estimated with linear regression analyses and expressed in coefficients of standard deviation (SD) scores (Z-scores). Multivariable logistic regression analyses were carried out to disclose the independent determinants of the presence of LP-Z when taking account of clinical covariates. Kaplan–Meier curves with log-rank test were performed to determine the effect of the presence of LP-Z on mortality on the waiting list, with the date of OLT as the census date. Cox proportional hazards models were used to compute hazard ratios (HRs) and 95%CI of LP-Z (expressed per 1 Ln SD increment) on mortality risk on the waiting list. For calculation purposes, zero values of LP-Z were set at 0.001 in the Cox regression analysis. HRs were calculated in models adjusted for age, sex, and MELD score. We estimated changes in risk of mortality on the waiting list by inclusion of detectable LP-Z using the MELD score as the base model with Harrell's C-statistics [48]. To account for the number of independent comparisons, we applied a Bonferroni correction. Therefore, two-sided *p*-values of <0.01 ($0.05/3$) were considered statistically significant, given the use of three independent comparisons (pre-transplant cirrhotic patients, OLT recipients, and PREVEND population).

3. Results

3.1. Comparison of Clinical and Laboratory Characteristics in Pre-Transplant Cirrhotic Patients and OLT Recipients

In 130 pre-transplant cirrhotic patients and 372 OLT recipients, MAFLD and cholestatic liver disease were the most frequent primary liver diseases, accounting for >50% of indications for transplantation. Baseline characteristics, such as age, sex, smoking, history of CVD or diabetes, and drug-use, did not differ significantly between the pre-transplant cirrhotic patients and OLT recipients (Table 1). In the pre-transplant cirrhotic patients, the median MELD score was 15 (IQR 10–19), with a CPT A classification in 21.5%, CPT B classification in 49.2%, and CPT C classification in 29.2%. As expected, liver function tests were all higher in the pre-transplant cirrhotic patients with lower albumin levels compared to the OLT recipients. In the pre-transplant cirrhotic patients, the lipid profile was profoundly different compared to the OLT recipients with lower plasma total cholesterol, HDL-C, and LDL-C, non-HDL cholesterol, and lower triglycerides, apoA-I, total TRLP, and total HDLP levels (Table 1, all $p < 0.001$). Only apoB, very large and very small TRLP, LDLP, and large HDLP were not significantly different between the pre-transplant cirrhotic patients and OLT recipients after adjustment for age, sex, and primary liver disease aetiology. Moreover, TRL size was smaller, whereas LDL and HDL size were significantly greater in the pre-transplant cirrhotic patients ($p < 0.001$). The differences in TRLP and decrease in HDLP levels were more profound in the patients with higher CPT classification (Supplemental Figure S1). Moreover, TRLP and HDLP levels were inversely correlated with MELD scores, whereas LDLP was positively correlated with MELD scores (Supplemental Figure S2). Notably, LP-Z was present in 40 (30.8%) pre-transplant cirrhotic patients compared to only 3 (0.8%) OLT recipients ($p < 0.001$).

Table 1. Clinical characteristics and lipid profile of 130 pre-transplant cirrhotic patients and 372 orthotopic liver transplant (OLT) recipients from TransplantLines.

	Pre-Transplant Cirrhotic Patients N = 130	OLT Recipients N = 372	p-Value	Adjusted p-Value *
Baseline characteristics				
Sex: men/women, n (%)	85 (65.4)/45 (34.6)	218 (58.6)/154 (41.4)	0.174	n.a.
Age (years), median (IQR)	59.5 (52.0–65.0)	59.0 (47.0–67.0)	0.652	n.a.
BMI (kg/m ²), median (IQR)	28.1 (24.3–30.9)	25.9 (22.9–29.6)	0.006	0.726
BMI				
• Normal; ≤25 kg/m ² , n (%)	28 (30.8)	135 (41.5)	0.063	0.928
• Overweight; 25–30 kg/m ² , n (%)	32 (35.2)	117 (36.0)	0.883	0.605
• Obese; ≥30 kg/m ² , n (%)	31 (34.1)	73 (22.5)	0.024	0.616
Smoking, n (%)	16 (18.8)	34 (11.7)	0.088	0.132
Child Pugh Turcotte classification				
• Child Pugh Turcotte A, n (%)	28 (21.5)	-	n.a.	n.a.
• Child Pugh Turcotte B, n (%)	64 (49.2)	-	n.a.	n.a.
• Child Pugh Turcotte C, n (%)	38 (29.2)	-	n.a.	n.a.
MELD score, median (IQR)	15.0 (10.0–19.0)	-	n.a.	n.a.
Mortality on waiting list, n (%)	29 (22.3)	-	n.a.	n.a.
History of cardiovascular disease, n (%)	6 (4.8)	28 (7.6)	0.282	0.067
History of diabetes, n (%)	36 (28.6)	106 (28.6)	0.987	0.055
Glucose lowering drugs, n (%)	35 (31.8)	79 (21.8)	0.031	0.697
Lipid lowering drugs, n (%)	19 (17.3)	87 (24.0)	0.140	0.019

Table 1. Cont.

	Pre-Transplant Cirrhotic Patients N = 130	OLT Recipients N = 372	p-Value	Adjusted p-Value *
Blood tests				
ALT (U/L), median (IQR)	40.0 (28.0–60.0)	25.0 (18.0–36.5)	<0.001	0.002
AST (U/L), median (IQR)	54.0 (44.0–84.0)	25.0 (20.0–33.0)	<0.001	<0.001
GGT (U/L), median (IQR)	95.5 (48.3–150.8)	39.0 (21.0–89.0)	<0.001	0.483
ALP (U/L), mean ± SD	140.5 (98.3–215.3)	87.0 (69.3–129.8)	<0.001	0.003
Bilirubin direct, median (IQR)	27.0 (16.0–85.0)	9.0 (7.0–12.0)	<0.001	0.002
Bilirubin total, median (IQR)	40.0 (23.0–99.0)	10.0 (7.0–14.0)	<0.001	<0.001
Albumin (g/L), median (IQR)	31.0 (27.0–36.0)	44.0 (42.0–46.0)	<0.001	<0.001
HbA1c (mmol/mol), median (IQR)	32.0 (26.0–39.5)	36.0 (32.0–43.0)	0.001	0.001
HbA1c (%), median (IQR)	5.1 (4.5–5.8)	5.4 (5.1–6.1)	0.001	0.001
Fasting glucose (mmol/L), median (IQR)	6.4 (5.0–8.5)	5.7 (5.2–6.8)	0.133	0.712
Lipids and lipoproteins				
Total cholesterol (mmol/L), median (IQR)	3.2 (2.5–4.1)	4.2 (3.6–4.9)	<0.001	<0.001
Non-HDL cholesterol (mmol/L), median (IQR)	2.2 (1.7–3.0)	2.8 (2.2–3.4)	<0.001	0.003
HDL cholesterol (mmol/L), median (IQR)	0.9 (0.4–1.2)	1.3 (1.1–1.7)	<0.001	<0.001
LDL cholesterol (mmol/L), median (IQR)	1.8 (1.2–2.3)	2.1 (1.7–2.5)	<0.001	0.031
Triglycerides (mmol/L), median (IQR)	0.7 (0.5–1.1)	1.3 (1.0–1.8)	<0.001	<0.001
ApoB (g/L), median (IQR)	63.0 (48.0–83.8)	74.0 (59.0–89.0)	<0.001	0.182
ApoA-I (g/L), median (IQR)	57.5 (31.8–82.3)	128.0 (111.0–146.0)	<0.001	<0.001
TRLP (nmol/L), median (IQR)	94.3 (39.6–147.0)	127.7 (85.4–182.6)	<0.001	0.001
Very large TRLP (nmol/L), median (IQR)	0.0 (0.0–0.0)	0.0 (0.0–0.1)	<0.001	0.173
Large TRLP (nmol/L), median (IQR)	0.3 (0.0–1.4)	2.0 (0.4–5.8)	<0.001	<0.001
Medium TRLP (nmol/L), median (IQR)	2.1 (0.0–8.0)	15.4 (7.0–26.3)	<0.001	<0.001
Small TRLP (nmol/L), median (IQR)	17.3 (1.6–34.0)	33.4 (17.0–57.5)	<0.001	<0.001
Very small TRLP (nmol/L), median (IQR)	62.3 (18.2–117.2)	65.5 (35.7–107.4)	0.370	0.836
TRL size (nm), median (IQR)	41.5 (35.4–49.4)	45.9 (41.6–51.8)	<0.001	<0.001
LDLP (nmol/L), median (IQR)	1026.5 (745.3–1477.3)	1234.5 (1013.5–1494.8)	<0.001	0.316
Large LDLP (nmol/L), median (IQR)	438.0 (208.8–671.8)	292.5 (139.8–496.0)	<0.001	<0.001
Medium LDLP (nmol/L), median (IQR)	0.0 (0.0–155.3)	139.5 (0.0–396.0)	<0.001	<0.001
Small LDLP (nmol/L), median (IQR)	256.0 (98.8–398.5)	637.0 (403.3–860.5)	<0.001	<0.001
LDL size (nm), median (IQR)	21.7 (21.1–22.0)	21.1 (20.7–21.4)	<0.001	<0.001
Total HDLP (µmol/L), median (IQR)	6.5 (4.0–10.0)	19.5 (17.1–21.6)	<0.001	<0.001
Large HDLP (µmol/L), median (IQR)	2.3 (1.0–3.8)	2.1 (1.2–3.6)	0.415	0.930
Medium HDLP (µmol/L), median (IQR)	0.5 (0.0–2.0)	4.8 (3.6–6.3)	<0.001	<0.001
Small HDLP (µmol/L), median (IQR)	3.0 (1.2–5.5)	12.1 (9.6–14.1)	<0.001	<0.001
HDL size (nm), median (IQR)	10.4 (9.3–11.3)	9.2 (8.8–9.7)	<0.001	<0.001

Table 1. Cont.

	Pre-Transplant Cirrhotic Patients N = 130	OLT Recipients N = 372	p-Value	Adjusted p-Value *
HDL subspecies				
• H1P, (μmol/L), median (IQR)	0.0 (0.0–0.2)	1.9 (0.5–3.4)	<0.001	<0.001
• H2P, (μmol/L), median (IQR)	2.8 (0.9–5.1)	9.6 (7.8–11.5)	<0.001	<0.001
• H3P, (μmol/L), median (IQR)	0.1 (0.0–0.8)	3.1 (1.6–4.3)	<0.001	<0.001
• H4P, (μmol/L), median (IQR)	0.2 (0.0–0.9)	1.7 (1.0–2.4)	<0.001	<0.001
• H5P, (μmol/L), median (IQR)	0.1 (0.0–0.6)	0.5 (0.2–1.0)	<0.001	<0.001
• H6P, (μmol/L), median (IQR)	0.4 (0.0–1.1)	0.7 (0.3–1.7)	<0.001	<0.001
• H7P, (μmol/L), median (IQR)	0.8 (0.0–2.5)	0.4 (0.1–1.0)	0.044	<0.001
LP-Z present, n (%)	40 (30.8%)	3 (0.8%)	<0.001	<0.001
LP-Z (nmol/L), median (IQR)	0 (0.0–666.4)	0 (0.0–0.0)	<0.001	<0.001
Primary liver diseases				
Storage disease, n (%)	4 (3.1)	33 (8.9)	0.031	n.a.
Autoimmune hepatitis, n (%)	11 (8.5)	19 (5.1)	0.165	n.a.
Cholestatic liver disease (PSC/PBC), n (%)	34 (26.2)	99 (26.6)	0.919	n.a.
Viral, n (%)	12 (9.2)	39 (10.5)	0.684	n.a.
Alcohol, n (%)	29 (22.3)	49 (13.2)	0.013	n.a.
MAFLD, n (%)	33 (25.4)	34 (9.1)	<0.001	n.a.
Vascular, n (%)	2 (1.5)	1 (0.3)	0.166	n.a.
Malignancy, n (%)	0 (0)	5 (1.3)	0.334	n.a.
Other, n (%)	5 (3.8)	93 (25.0)	<0.001	n.a.

* p-value adjusted for age, sex, and primary liver disease. Fasting glucose was available in 299 patients. Data are given in number with percentages (%) or median with interquartile ranges (IQR). Abbreviations: ALP, alkaline phosphatase; ALT, aminotransferase; ApoA, apolipoprotein A; ApoB, apolipoprotein B; AST, aspartate aminotransferase; BMI, body mass index; GGT, gamma-glutamyltransferase; HbA1c, glycated hemoglobin; HDL, high density lipoproteins; HDLP, high density lipoprotein particles; IQR, interquartile range; LDL, low density lipoproteins; LDLP, low density lipoprotein particles; MAFLD, metabolic associated fatty liver disease; MELD score, Model for End-Stage Liver Disease; MELD-Na score, Model for End-Stage Liver Disease sodium; PBC, primary biliary cholangitis; PSC, primary sclerosing cholangitis; TRL, triglyceride-rich lipoproteins; TRLP, triglyceride-rich lipoprotein particles.

3.2. Comparison of Pre-Transplant Cirrhotic Patients and OLT Recipients with PREVEND Population

Baseline characteristics, liver function, and lipid profile for the control cohort PREVEND are presented in Supplemental Table S1. In the pre-transplant cirrhotic group, all (apo)lipoprotein measures were much lower compared to the PREVEND population, except for large LDLP, large HDLP, and HP7 (Table 2). Also, in the group of patients with MAFLD as underlying aetiology, total cholesterol, triglycerides and HDL-C as well as TRLP and HDLP were lower compared with the values in the PREVEND population (data not shown). In the OLT recipients, apoA-I, very large, large, and very small TRLP, large and small LDLP, and medium HDLP were not different compared to the PREVEND population, whereas HDL-C, triglycerides, medium TRLP, large HDLP, HP4, HP5, HP6, and HP7 were higher. The other lipoprotein measures were still lower. LDL size and HDL size were greater in the pre-transplant cirrhotic patients, whereas TRL size and HDL size were greater in the OLT recipients compared to the PREVEND population (Table 2). Notably in the PREVEND cohort, measurable LP-Z levels were only found in five participants (0.08%), with a strikingly higher regression coefficient of the Z-score difference of 3.176 (95% CI 3.017–3.336) in the pre-transplant cirrhotic patients (Table 2).

Table 2. Lipid profile of pre-transplant cirrhotic patients and orthotopic liver transplant (OLT) recipients compared with the PREVEND population.

	Comparison of Pre-Transplant Cirrhotic Patients (N = 130) with the PREVEND Population (N = 6027)	Comparison of OLT Recipients (N = 372) with the PREVEND Population (N = 6027)
Lipids and lipoproteins		
Total cholesterol (mmol/L), median (IQR)	−1.827 (−1.989 to −1.665) *	−1.000 (−1.097 to −0.904) *
Non-HDL cholesterol (mmol/L), median (IQR)	−1.514 (−1.676 to −1.352) *	−1.157 (−1.253 to −1.060) *
HDL cholesterol (mmol/L), median (IQR)	−1.096 (−1.249 to −0.944) *	0.508 (0.415 to 0.600) *
LDL cholesterol (mmol/L), median (IQR)	−1.684 (−1.844 to −1.525) *	−1.426 (−1.521 to −1.331) *
Triglycerides (mmol/L), median (IQR)	−0.552 (−0.724 to −0.379) *	0.141 (0.038 to 0.245) *
ApoB (mg/dL), median (IQR)	−0.803 (−0.971 to −0.635) *	−0.600 (−0.699 to −0.501) *
ApoA-I (mg/dL), median (IQR)	−2.815 (−2.961 to −2.669) *	0.001 (−0.086 to 0.089)
TRLP (nmol/L), median (IQR)	−0.644 (−0.813 to −0.476) *	−0.235 (−0.335 to −0.134) *
Very large TRLP (nmol/L), median (IQR)	−0.088 (−0.263 to 0.087)	0.025 (−0.079 to 0.130)
Large TRLP (nmol/L), median (IQR)	−0.609 (−0.779 to −0.439) *	−0.023 (−0.127 to 0.081)
Medium TRLP (nmol/L), median (IQR)	−0.732 (−0.901 to −0.564) *	0.149 (0.047 to 0.251) *
Small TRLP (nmol/L), median (IQR)	−0.740 (−0.913 to −0.567) *	−0.353 (−0.457 to −0.249) *
Very small TRLP (nmol/L), median (IQR)	0.056 (−0.117 to 0.228)	−0.046 (−0.149 to 0.056)
TRL size (nm), median (IQR)	−0.423 (−0.596 to −0.250) *	0.116 (0.013 to 0.219) **
LDLP (nmol/L), median (IQR)	−0.781 (−0.949 to −0.612) *	−0.606 (−0.705 to −0.507) *
Large LDLP (nmol/L), median (IQR)	0.628 (0.463 to 0.792) *	−0.089 (−0.186 to 0.009)
Medium LDLP (nmol/L), median (IQR)	−0.950 (−1.121 to −0.778) *	−0.531 (−0.634 to −0.428) *
Small LDLP (nmol/L), median (IQR)	−0.833 (−1.006 to −0.661) *	−0.014 (−0.118 to 0.090)
LDL size (nm), median (IQR)	0.833 (0.667 to 1.000) *	−0.051 (−0.150 to 0.048)
Total HDLP (μmol/L), median (IQR)	−3.990 (−4.129 to −3.851) *	−0.473 (−0.556 to −0.389) *
Large HDLP (μmol/L), median (IQR)	0.518 (0.362 to 0.674) *	0.631 (0.536 to 0.727) *
Medium HDLP (μmol/L), median (IQR)	−1.619 (−1.777 to −1.460) *	−0.030 (−0.126 to 0.065)
Small HDLP (μmol/L), median (IQR)	−3.289 (−3.435 to −3.143) *	−0.731 (−0.820 to −0.642) *
HDL size (nm), median (IQR)	0.371 (2.436 to 2.733) *	0.655 (0.571 to 0.738) *
HDL subspecies		
• H1P, (μmol/L), median (IQR)	−1.719 (−1.881 to −1.557) *	−0.681 (−0.780 to −0.582) *
• H2P, (μmol/L), median (IQR)	−2.839 (−2.995 to −2.682) *	−0.424 (−0.519 to −0.330) *
• H3P, (μmol/L), median (IQR)	−1.353 (−1.517 to −1.189) *	−0.102 (−0.202 to −0.002) **
• H4P, (μmol/L), median (IQR)	−1.026 (−1.190 to −0.862) *	0.108 (0.008 to 0.208) **
• H5P, (μmol/L), median (IQR)	−0.098 (−0.264 to 0.069)	0.596 (0.492 to 0.699) *
• H6P, (μmol/L), median (IQR)	−0.217 (−0.379 to −0.055) *	0.239 (0.140 to 0.338) *
• H7P, (μmol/L), median (IQR)	1.686 (1.536 to 1.836) *	0.610 (0.520 to 0.700) *
LP-Z (nmol/L), median (IQR)	3.176 (3.017 to 3.336) *	0.031 (0.008 to 0.055) *

* $p < 0.01$ or less. ** $p < 0.05$. Data represent regression coefficients of the standard deviation scores (Z-scores) adjusted for age and sex with corresponding 95% confidence intervals. Comparison of the pre-transplant cirrhotic, OLT recipients with the control group PREVEND. Abbreviations: ApoA, apolipoprotein A; ApoB, apolipoprotein B; HDL, high density lipoproteins; HDLP, high density lipoprotein particles; IQR, interquartile range; LDL, low density lipoproteins; LDLP, low density lipoprotein particles; LP-Z, lipoprotein Z; TRL, triglyceride-rich lipoproteins; TRLP, triglyceride-rich lipoprotein particles.

3.3. Determinants of the Presence of LP-Z

No significant differences were found with respect to the aetiology of primary liver disease in the pre-transplant cirrhotic patients, except for cholestatic liver diseases (20% vs. 40%, $p < 0.05$) between those with and without measurable LP-Z (Table 3). Cirrhotic patients with measurable LP-Z levels did have higher CPT classifications and MELD scores with concomitantly higher ALT, ALP, and total and direct bilirubin levels ($p < 0.05$). In the cirrhotic patients, LP-Z was more frequently present with higher CPT classification (Figure 2A) and was correlated with higher MELD scores (Figure 2B). In multivariable binary logistic regression analyses, MELD scores were independently associated with the presence of LP-Z in the cirrhotic patients, even when adjusted for CPT classification and the use of glucose or lipid lowering drugs (Supplemental Table S2). Furthermore, in subsequent multivariable analysis, the independent positive association of higher MELD scores with measurable LP-Z levels remained present after adjustment for aetiology of liver cirrhosis (Supplemental Table S3). In this analysis, the presence of LP-Z was positively associated with cholestatic liver disease as aetiology of cirrhosis.

Table 3. Clinical and biochemical characteristics of LP-Z in 130 pre-transplant cirrhotic patients from TransplantLines.

	LP-Z Not Detectable N = 90 (69.2%)	LP-Z Detectable N = 40 (30.8%)	p-Value	Adjusted p-Value *
Baseline characteristics				
Sex: men/women, n (%)	60 (66.7)/30 (33.3)	25 (62.5)/15 (37.5)	0.645	n.a.
Age (years), median (IQR)	60.0 (54.0–65.3)	58.5 (51.0–64.0)	0.296	n.a.
BMI (kg/m ²), median (IQR)	28.2 (24.6–31.1)	26.4 (23.2–31.0)	0.239	0.932
BMI				
• Normal; ≤ 25 kg/m ² , n (%)	17 (26.2)	11 (42.3)	0.131	0.494
• Overweight; 25–30 kg/m ² , n (%)	25 (38.5)	7 (26.9)	0.298	0.132
• Obese; ≥ 30 kg/m ² , n (%)	23 (35.4)	8 (30.8)	0.675	0.255
Smoking, n (%)	13 (20.0)	3 (15.0)	0.617	0.418
Child Pugh Turcotte classification				
• Child Pugh Turcotte A, n (%)	24 (26.7)	4 (10.0)	0.038	0.035
• Child Pugh Turcotte B, n (%)	53 (58.9)	11 (27.5)	0.001	0.001
• Child Pugh Turcotte C, n (%)	13 (14.4)	25 (62.5)	<0.001	<0.001
MELD score, median (IQR)	13.0 (9.8–16.0)	19.5 (17.0–22.0)	<0.001	<0.001
Mortality on waiting list, n (%)	18 (20.0)	11 (27.5)	0.150	0.999
History of cardiovascular disease, n (%)	6 (6.9)	0 (0.0)	0.176	0.999
History of diabetes, n (%)	28 (32.2)	8 (20.5)	0.180	0.252
Glucose lowering drugs, n (%)	28 (37.8)	7 (19.4)	0.052	0.069
Lipid lowering drugs, n (%)	13 (17.6)	6 (16.7)	0.907	0.775
Blood tests				
ALT (U/L), median (IQR)	36.0 (28.0–49.5)	53.5 (33.5–112.3)	0.006	0.031
AST (U/L), median (IQR)	50.0 (37.0–62.3)	88.0 (54.0–152.8)	<0.001	0.069
GGT (U/L), median (IQR)	97.5 (52.5–152.0)	69.5 (40.5–141.5)	0.378	0.630
ALP (U/L), mean \pm SD	130.5 (92.0–167.5)	218.5 (104.3–298.0)	0.005	0.004
Bilirubin direct, median (IQR)	18.0 (13.0–29.0)	162.0 (51.0–228.0)	<0.001	0.002

Table 3. Cont.

	LP-Z Not Detectable N = 90 (69.2%)	LP-Z Detectable N = 40 (30.8%)	p-Value	Adjusted p-Value *
Bilirubin total, median (IQR)	28.0 (18.0–52.5)	162.5 (75.5–257.3)	<0.001	<0.001
Albumin (g/L), median (IQR)	32.0 (27.3–36.0)	28.0 (25.3–36.0)	0.111	0.169
HbA1c (mmol/mol), median (IQR)	34.0 (27.0–46.0)	27.0 (18.0–33.0)	0.018	0.095
HbA1c (%), median (IQR)	5.3 (4.7–6.4)	4.6 (3.8–5.2)	0.017	0.093
Fasting glucose (mmol/L), median (IQR)	6.4 (5.0–8.0)	6.6 (4.9–9.8)	0.554	0.326
Lipids and lipoproteins				
Total cholesterol (mmol/L), median (IQR)	3.4 (2.8–4.1)	2.4 (1.6–4.2)	0.001	0.044
Non-HDL cholesterol (mmol/L), median (IQR)	2.3 (1.9–3.0)	2.1 (1.4–3.9)	0.504	0.356
HDL cholesterol (mmol/L), median (IQR)	1.1 (0.8–1.3)	0.2 (0.1–0.5)	<0.001	<0.001
LDL cholesterol (mmol/L), median (IQR)	1.9 (1.4–2.2)	1.7 (1.1–2.3)	0.409	0.915
Triglycerides (mmol/L), median (IQR)	0.6 (0.5–1.0)	0.9 (0.5–1.3)	0.101	0.152
ApoB (mg/dL), median (IQR)	57.0 (46.8–73.5)	94.0 (50.5–123.0)	<0.001	<0.001
ApoA-I (mg/dL), median (IQR)	68.5 (53.0–88.0)	20.5 (11.3–34.0)	<0.001	<0.001
TRLP (nmol/L), median (IQR)	112.0 (69.6–147.0)	28.4 (4.7–163.6)	0.001	0.220
Very large TRLP (nmol/L), median (IQR)	0.0 (0.0–0.1)	0.0 (0.0–0.0)	0.010	0.310
Large TRLP (nmol/L), median (IQR)	0.3 (0.0–1.6)	0.1 (0.0–1.3)	0.208	0.358
Medium TRLP (nmol/L), median (IQR)	2.0 (0.0–6.8)	2.7 (0.0–13.3)	0.215	0.138
Small TRLP (nmol/L), median (IQR)	20.3 (11.2–33.8)	0.6 (0.0–29.3)	0.001	0.859
Very small TRLP (nmol/L), median (IQR)	74.6 (38.8–118.4)	4.6 (0.0–110.6)	<0.001	0.100
TRL size (nm), median (IQR)	40.9 (34.7–48.4)	45.6 (36.2–55.7)	0.154	0.756
LDLP (nmol/L), median (IQR)	956.0 (721.5–1166.3)	1715.0 (968.5–2256.3)	<0.001	<0.001
Large LDLP (nmol/L), median (IQR)	472.5 (337.8–671.8)	235.5 (20.5–727.3)	0.007	0.274
Medium LDLP (nmol/L), median (IQR)	16.5 (0.0–234.5)	0.0 (0.0–0.0)	<0.001	0.004
Small LDLP (nmol/L), median (IQR)	277.0 (113.0–425.0)	182.0 (26.8–394.0)	0.108	0.298
LDL size (nm), median (IQR)	21.7 (21.3–22.0)	21.3 (20.0–22.1)	0.033	<0.001
Total HDLP (µmol/L), median (IQR)	8.1 (5.8–11.5)	3.3 (1.6–4.8)	<0.001	<0.001
Large HDLP (µmol/L), median (IQR)	3.1 (1.9–3.9)	0.7 (0.0–1.5)	<0.001	<0.001
Medium HDLP (µmol/L), median (IQR)	0.9 (0.2–3.0)	0.0 (0.0–0.3)	<0.001	<0.001
Small HDLP (µmol/L), median (IQR)	3.4 (1.8–6.1)	2.1 (0.4–3.2)	0.001	0.001
HDL size (nm), median (IQR)	10.8 (9.7–11.5)	9.5 (8.1–10.3)	<0.001	<0.001
HDL subspecies				
• H1P, (µmol/L), median (IQR)	0.0 (0.0–0.4)	0.0 (0.0–0.1)	0.264	0.962
• H2P, (µmol/L), median (IQR)	3.3 (1.3–5.6)	1.7 (0.0–2.8)	<0.001	<0.001
• H3P, (µmol/L), median (IQR)	0.4 (0.0–1.2)	0.0 (0.0–0.1)	<0.001	0.004
• H4P, (µmol/L), median (IQR)	0.5 (0.0–1.3)	0.0 (0.0–0.1)	<0.001	0.001
• H5P, (µmol/L), median (IQR)	0.1 (0.0–0.6)	0.0 (0.0–0.6)	0.699	0.377
• H6P, (µmol/L), median (IQR)	0.6 (0.0–1.3)	0.0 (0.0–0.5)	<0.001	<0.001
• H7P, (µmol/L), median (IQR)	1.8 (0.3–2.9)	0.0 (0.0–0.3)	<0.001	<0.001
LP-Z (nmol/L), median (IQR)	-	1354.5 (725.7–2080.9)	n.a.	n.a.

Table 3. Cont.

	LP-Z Not Detectable N = 90 (69.2%)	LP-Z Detectable N = 40 (30.8%)	p-Value	Adjusted p-Value *
Primary liver diseases				
Storage disease, n (%)	4 (4.4)	0 (0)	0.311	n.a.
Autoimmune hepatitis, n (%)	8 (8.9)	3 (7.5)	1.00	n.a.
Cholestatic liver disease (PSC/PBC), n (%)	18 (20.0)	16 (40.0)	0.017	n.a.
Viral, n (%)	9 (10.0)	3 (7.5)	0.754	n.a.
Alcohol, n (%)	22 (24.4)	7 (17.5)	0.380	n.a.
MAFLD, n (%)	24 (26.7)	9 (22.5)	0.614	n.a.
Vascular, n (%)	2 (2.2)	0 (0.0)	1.00	n.a.
Malignancy, n (%)	0 (0)	0 (0)	n.a.	n.a.
Other, n (%)	3 (3.3)	2 (5.0)	0.643	n.a.

* p-value adjusted for age, sex, and primary liver disease. Data are given in number with percentages (%) or median with interquartile ranges (IQR). Abbreviations: ALP, alkaline phosphatase; ALT, aminotransferase; ApoA, apolipoprotein A; ApoB, apolipoprotein B; AST, aspartate aminotransferase; BMI, body mass index; GGT, gamma-glutamyltransferase; HbA1c, glycated hemoglobin; HDL, high density lipoproteins; HDLP, high density lipoprotein particles; IQR, interquartile range; LDL, low density lipoproteins; LDLP, low density lipoprotein particles; LP-Z, lipoprotein Z; MAFLD, metabolic associated fatty liver disease; MELD, Model for End-Stage Liver Disease; MELD-Na, Model for End-Stage Liver Disease natrium; PBC, primary biliary cholangitis; PSC, primary sclerosing cholangitis; TRL, triglyceride-rich lipoprotein; TRLP, triglyceride-rich lipoprotein particles.

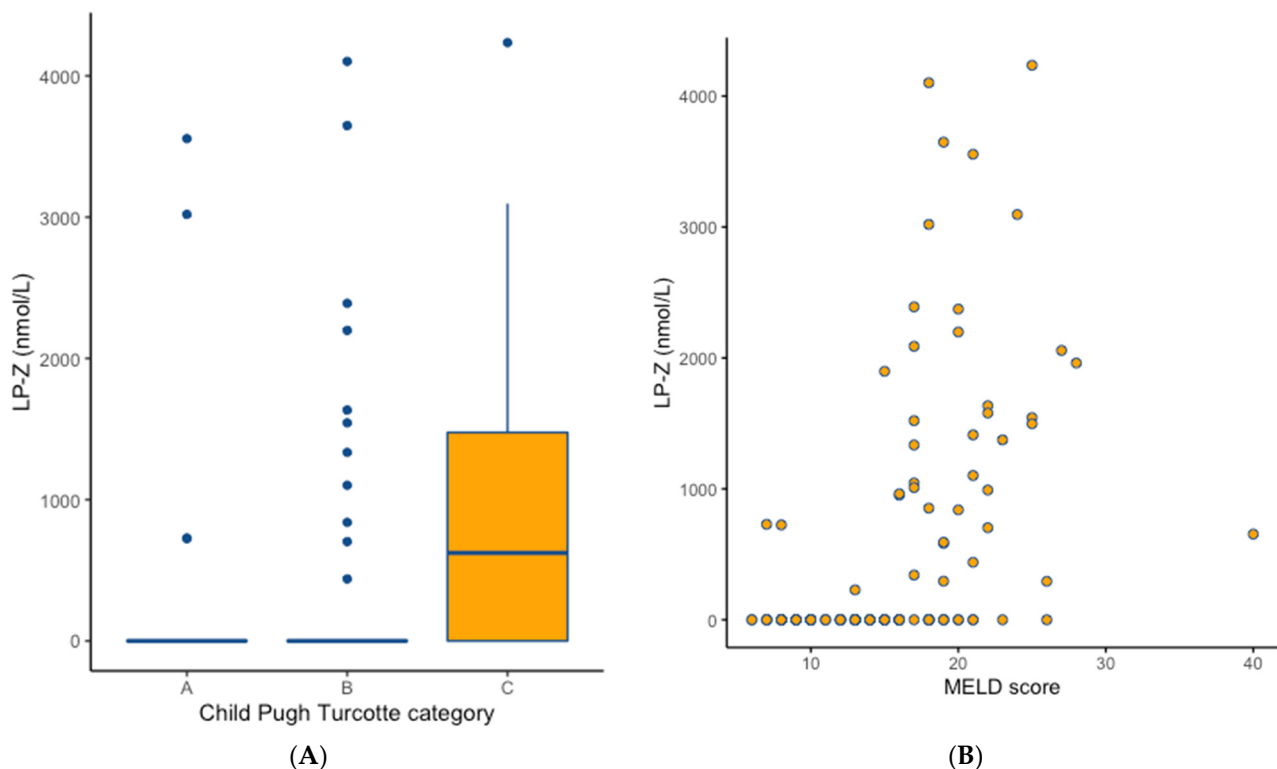


Figure 2. Plasma concentrations of LP-Z according to Child Pugh Turcotte classification and MELD scores in the pre-transplant cirrhotic group. (A): Concentrations of LP-Z according to Child Pugh Turcotte classification (Boxplots are shown and bars represent median LP-Z values). Child Pugh C classification vs. Child Pugh Turcotte Classification A and B, Kruskal–Wallis test $p < 0.001$. (B): Spearman rank correlation coefficient 0.591, $p < 0.001$.

In the pre-transplant cirrhotic patients, strikingly lower levels of HDL-C (0.2 vs. 1.1 mmol/L, $p < 0.001$), apo A-I (20.5 vs. 68.5 mg/dL, $p < 0.001$), and smaller HDL size (9.5 vs. 10.8 nm, $p < 0.001$) were found in the presence of LP-Z (Table 3). The pre-transplant cirrhotic patients with detectable LP-Z also had lower TRLP levels, higher LDLP levels, and strongly reduced HDLP levels (Figure 3). When adjusted for age, sex, and MELD score, TRLP was not independently associated with the presence of LP-Z (Supplemental Table S3; TRLP Model 3). The presence of LP-Z was however independently associated with higher levels of LDLP (Supplemental Table S4; LDLP Model 3, $p < 0.001$) and lower levels of HDLP (Supplemental Table S4; HDLP Model 3, $p = 0.001$). Finally, follow-up data were available in 15 patients. In 14 out of 15 cirrhotic patients, LP-Z was measurable pre-transplantation and only 1 patient had a measurable LP-Z value post-transplantation.

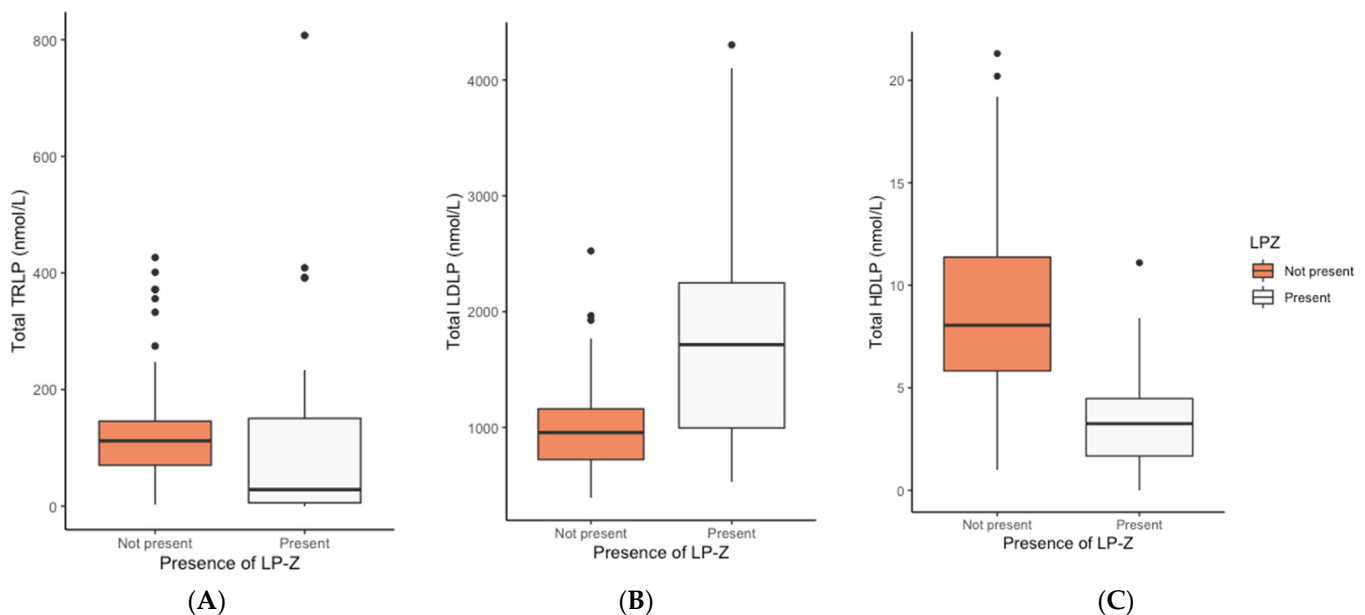


Figure 3. Boxplot of TRLP, LDLP, and HDLP according to presence of LP-Z in pre-transplant cirrhotic group (N = 130). Boxplot (A): TRLP, Boxplot (B): LDLP, Boxplot (C): HDLP. p -values were determined by Mann–Whitney U Test. Abbreviations: HDLP, high density lipoprotein particles; LDLP, low density lipoprotein particles; LP-Z, lipoprotein Z; TRLP, triglyceride-rich lipoprotein particles.

3.4. Presence of LP-Z and Mortality in Pre-Transplant Cirrhotic Patients

Twenty-nine of the pre-transplantation cirrhotic patients died while on the waiting list (Table 1). Out of 40 patients with detectable LP-Z, 11 (27.5%) patients died vs. 18 (20.0%) patients without detectable LP-Z (Table 3). The presence of LP-Z, adjusted for age, sex, and MELD score, predicted a worse survival in pre-transplant cirrhotic patients (Figure 4: Kaplan–Meier plot; log-rank test: $p < 0.001$). In Cox proportional hazard regression analyses that examined LP-Z concentrations as HR per 1 Ln SD increment, increased LP-Z concentrations were associated with increased risk of mortality on the waiting list in the crude analyses (HR 1.14, 95%CI 1.07–1.21, $p < 0.001$). The association remained present in analyses adjusted for age, sex (HR 1.15, 95%CI 1.08–1.23, $p < 0.001$), and MELD score (HR 1.11, 95%CI 1.03–1.19, $p = 0.003$). A mortality risk prediction model containing MELD score, as well as age and sex, yielded a C-index of 0.80 (95%CI 0.74–0.85). Notably, the addition of detectable LP-Z improved the C-index to 0.82 (95%CI 0.77–0.86, $p = 0.01$).

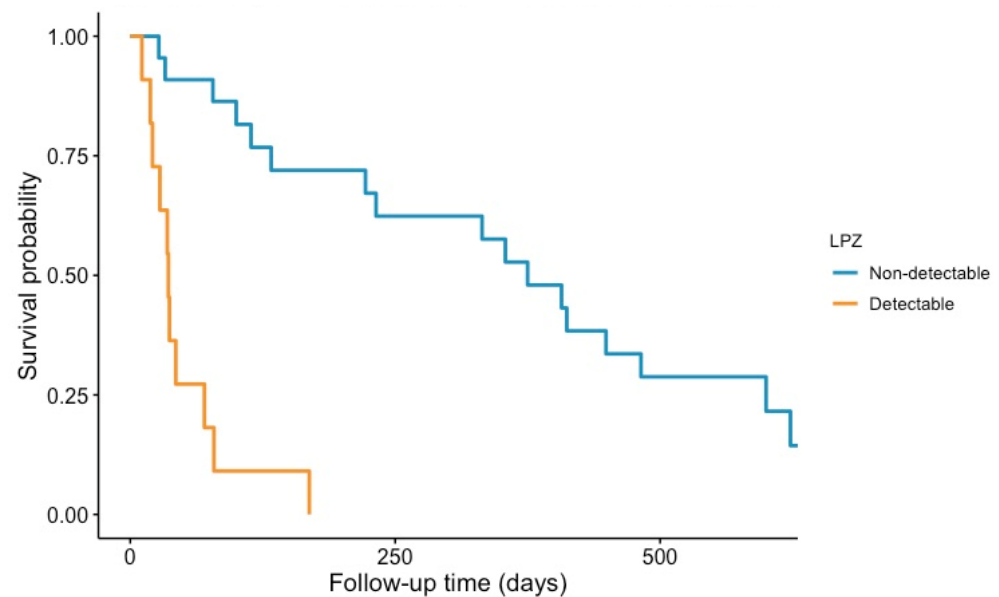


Figure 4. Kaplan–Meier plots for all-cause mortality in pre-transplant cirrhotic patients according to detectable plasma LP-Z concentrations. Log-rank test $p < 0.001$.

4. Discussion

Using novel NMR methodology, we have demonstrated considerably lower levels of all major lipoprotein classes, including lower plasma concentrations of TRLP, LDLP, and HDLP, in the pre-transplant cirrhotic patients selected for transplantation screening compared to the values in the large population-based PREVEND cohort. The HDL particle concentration and apoA-I levels were most profoundly diminished. In the OLT recipients, most lipoprotein variables approximately returned to the values found in the PREVEND cohort. However, plasma total cholesterol, LDL-C, non-HDL cholesterol, apoB, as well as TRLP, LDLP, and HDLP particle concentrations were still lower, whereas TRL size and HDL size were greater in the OLT recipients than in the PREVEND cohort. These lipoprotein abnormalities may have relevance for the occurrence of morbidities after transplantation, including atherosclerotic cardiovascular disease, heart failure, and diabetes. Notably, our study demonstrated for the first time that LP-Z, an abnormal LDL-like lipoprotein, was remarkably frequently detectable in pre-transplant cirrhotic patients with a prevalence of 30.8%. In contrast, in the general population, plasma LP-Z was detectable in only a very few participants. Remarkably, plasma LP-Z was detectable in the pre-transplant cirrhotic patients with a variety of underlying aetiologies, although detectable LP-Z tended to be more prevalent in the cirrhotic patients with underlying cholestatic liver diseases. Profoundly lower levels of HDL-C, apoA-I, and HDLP concentrations were found in the presence of LP-Z. Moreover, the presence of LP-Z in plasma was associated with a worse CPT classification and a higher MELD score. Given that the median MELD score among patients selected for OLT in the current study was not very high (15 points) it can be surmised that lipoprotein abnormalities, in particular low HDL-C and low HDLP could be even more pronounced in cirrhotic patients with more advanced disease. In the OLT recipients, LP-Z was detectable much less frequently, and plasma LP-Z disappeared in most patients during follow-up. Taken together, the present study reveals for the first time the presence of plasma LP-Z in a cohort of pre-transplant cirrhotic patients in association with cirrhosis severity. Moreover, our current findings conceivably suggest that a detectable LP-Z may translate in a disturbed HDL metabolism. Strikingly in the pre-transplant cirrhotic patients, the presence of LP-Z was associated with worse survival on the waiting list.

The liver plays a crucial role in the synthesis, secretion, degradation, and storage of lipids and lipoproteins. Plasma lipid and lipoprotein levels generally tend to decrease along with the severity of liver disease [1,49]. Lipoprotein profiles in liver disease are

however not uniform and this disparity could be explained by the different aetiologies of chronic liver diseases. In obstructive jaundice hyperlipidaemia, which is predominantly due to elevated LDL and triglycerides, is a constant finding and this appears to be the result of reabsorption of phospholipids from an obstructed biliary tree [1,50]. In cholestatic liver diseases, there is also an abnormal receptor-mediated uptake of lipoproteins from plasma [49]. Cholesterol taken up by hepatocytes suppresses hydroxymethylglutaryl-CoA-reductase, activates acyl CoA (cholesteryl acyl transferase), and inhibits expression of LDL receptors, but leaves apolipoprotein E receptor activity unchanged [49]. ApoA-I and apoA-II, major apolipoproteins that are carried by HDL, have been described to be decreased in cholestatic liver diseases together with impaired HL, lipoprotein lipase (LPL), and LCAT activities [9,49]. Hepatocytes are also able to produce protein factors involved in antioxidant defense and lipid transfer proteins, such as phospholipid transfer protein (PLTP), which affects triglyceride assembly and secretion and converts HDL in larger to smaller HDLP [51–55], and cholesteryl ester transfer protein (CETP) [52], which transfers cholesteryl esters from HDL towards lipoproteins of lower density. Plasma lipoproteins also tend to decrease in parenchymal liver diseases, where abnormalities in the composition of various lipoproteins depends on disturbed apolipoprotein synthesis, lipoprotein receptor abundance, and expression of enzymes involved in lipoprotein metabolism [1].

The present study was carried out in a considerable number of 130 cirrhotic patients. In comparison, previous studies in cirrhosis reported detailed lipoprotein measurements in up to 153 patients [3,56] and one research letter shortly described the basic lipid profile of 186 cirrhotic patients [12]. In these studies, NMR techniques for assessment of an elaborate lipid profile were not used. To the best of our knowledge, this study is the first describing the detailed NMR lipoprotein profiles in end-stage cirrhotic patients. In general, our current data corroborate with these earlier studies, which reported that patients with pre-transplant cirrhosis have lower levels of HDL-C, apoA-I, and total HDLP levels, as well as greater HDL size. The decrease in HDL-C and HDLP concentration despite a decrease in triglycerides and TRLP concentration, as well as the greater HDL size despite a decrease in HDL-C, clearly underscore the profound and complex alterations in lipoprotein metabolism in end-stage liver disease [31,57]. Additionally, the strong inverse relationships of the HDLP concentration with CPT classification and MELD score indicate the impact of severe end-stage liver disease on HDL metabolism. In contrast to end-stage liver disease, OLT recipients are often hyperlipidemic [14–16]. Interestingly, in the currently studied OLT recipients, only HDL-C, triglycerides, medium TRLP, large HDLP, HP4, HP5, HP6, and HP7 were higher compared to the PREVEND cohort. In the OLT recipients, apoA-I, very large, large, and very small TRLP, large and small LDLP, and medium HDLP were not different and surprisingly all other lipoprotein measures were still lower compared to the PREVEND population. However, it should be noted that the post-transplant participants were only studied with a starting point of 3 months after OLT. As corticosteroid use is a major determinant of increased cholesterol levels post-transplantation [15,23,24], the difference in lipid profile in the OLT recipients could be explained by the current post-transplant immunosuppressive strategies with, for instance, the swift tapering of corticosteroids and continuation of tacrolimus treatment.

Our findings may have relevance for cardiometabolic risk in liver transplant recipients. Cholesterol loaded VLDL remnants, LDL-C, and, in particular, smaller-sized LDLP are positively associated with incident atherosclerotic cardiovascular disease, whereas HDL-C and, in particular, the HDLP concentration are inversely associated with incident atherosclerotic cardiovascular disease [27,37]. Moreover, increased small HDLP may predict higher left ventricular ejection fraction after myocardial infarction [58]. On the other hand, in patients undergoing heart catheterization, lower HDLP concentration and smaller-sized HDLP are associated with increased mortality and heart failure, an important complication after OLT [19]. In addition, evidence is accumulating that larger TRLP are positively associated with incident diabetes, whereas smaller-sized LDLP and HDLP are inversely associated with incident diabetes, even independent of fasting insulin and plasma glucose [29,31],

which was not significantly different in OLT recipients compared to pre-transplant cirrhotic patients. Collectively, these findings underscore the complex and partly opposing influence of lipoprotein subfractions and sizes on major morbidities after OLT and warrant large scale longitudinal studies on this issue.

In 1976, Kostner et al. were the first to describe abnormal LDL particles that occurred in patients with obstructive jaundice and classified them into three subtypes named lipoprotein-X (LP-X), lipoprotein-Y (LP-Y), and lipoprotein-B (LP-B) [34]. Since then, only a few studies have been published that further address the characterisation of these abnormal LDL particles, which is probably due to the fact that conventional labour-intensive techniques are required to characterise these particles. Recently, LP-B was rediscovered using NMR methodology and renamed into LP-Z. A novel NMR assay was developed to further analyse the physiological and pathological signature of LP-Z [33]. In the initial paper by Bedi et al., LP-Z measured by the NMR assay could not be detected in plasma from patients with cholestatic liver diseases, such as PBC or PSC, but LP-Z was prevalent in patients with alcoholic liver disease [33]. In contrast to these findings, in the current study plasma, LP-Z was most prevalent in the cirrhotic patients with cholestatic liver diseases and was strongly related to bilirubin levels, in essence conforming to the original findings of Kostner et al. [34]. Thus, the increased presence of LP-Z in cholestatic patients could contribute to lipoprotein abnormalities in this category of cirrhotic patients. Since LP-Z was also present in other non-cholestatic aetiologies of cirrhotic liver diseases in the current cohort, the presence of LP-Z is probably not only attributable to cholestatic liver diseases, but may also be due to the presence of cirrhosis as such. In line, LP-Z was much less prevalent in the OLT recipients and our limited longitudinal observations showed that LP-Z disappeared in most patients over time.

Patients with cirrhotic end-stage liver disease have lower levels of circulating LCAT, besides alterations in CETP and HL activities [9], which raises the possibility that defective lipoprotein remodeling and catabolism may contribute to the generation of LP-Z in cirrhosis [9,49]. Very recently, it was suggested that compromised LCAT and HL activities may at least in part be responsible for the high prevalence of plasma LP-Z in alcoholic hepatitis [59]. Moreover, free cholesterol-rich reconstituted LP-Z particles were found to be hepatotoxic, as evidenced by the accelerated death of cultured hepatocytes from liver explants [59]. These findings suggest that LP-Z itself could have detrimental effects on the progression of liver disease. However, temporal cause-effect relationships are not yet clear, as is the role of LCAT in LP-Z generation and vice versa. It seems unlikely that the proposed detrimental effects of LP-Z could be explained by compromised LCAT activity alone because liver insufficiency is not a feature of genetic LCAT deficiency [60]. Additionally, the role of LP-Z as opposed to LP-X, an abnormal discoidal lipoprotein with increased free cholesterol content, which can be produced as a consequence of liver disease-induced impaired LCAT activity, has not been established. Yet, except for LDL variables (explained by the fact that LP-Z is an LDL-like lipoprotein particle and contributes to total LDL particle concentration), the presence of LP-Z was associated with much more pronounced lipoprotein abnormalities, and in particular, lower levels of HDL variables, which is likely explained at least in part by coinciding LCAT deficiency.

In the report of LP-Z in alcoholic hepatitis, LP-Z expressed as the ratio of LP-Z over VLDL + LDL apoB predicted a worse 90-day survival taking account of the MELD score [59]. In the current study, LP-Z was more closely related to the MELD score than to the CPT classification. Here, we report for the first time that in cirrhotic patients, the presence of LP-Z in plasma was independently associated with increased mortality on the waiting list. Importantly, adding LP-Z to the MELD score as the base model improved mortality risk prediction, as evidenced by a significant increase in C-statistic. Taken together, we propose that adding LP-Z may improve risk classification of cirrhotic patients, and hence may have clinical consequences regarding prioritizing patients for OLT.

The present study has several strengths. To the best of our knowledge, this is the first study to provide detailed information regarding NMR-determined particle concen-

trations and subfraction distribution of all major lipoprotein classes and to investigate the relationship of the presence of LP-Z in pre-transplantation cirrhotic patients and OLT recipients. Secondly, extensive data on clinical endpoints provided by the TransplantLines Biobank and Cohort study allowed us to describe our patient population in detail, assess patient survival in end-stage liver disease, and thoroughly address potential confounding factors. Limitations should also be considered. Firstly, the single-centre study design limits the external validity of our study. Secondly, robust follow-up after OLT was not available in the ongoing TransplantLines study, precluding the assessment of associations of lipoprotein characteristics with specific long-term complications. Thirdly, the presently used NMR methodology does not allow LP-X to be measured in frozen samples, as they are not stable [47].

5. Conclusions

Pre-transplant cirrhotic patients are featured by profoundly lower plasma TRLP, LDLP, and HDLP concentrations, as well as by abnormalities in lipoprotein subfraction distribution with smaller sized TRLP and larger sized LDLP and HDLP. After OLT, these lipoprotein abnormalities are in part reversed, with possible consequences for the development of various comorbidities. Notably, LP-Z, an abnormal LDL-like lipoprotein, is prevalent in cirrhosis, irrespective of underlying aetiology, and is strongly associated with low HDL-C, apoA-I, and HDLP concentrations. LP-Z may be a novel independent biomarker of worse survival in cirrhotic patients.

Supplementary Materials: The following supporting information can be downloaded at: <https://www.mdpi.com/article/10.3390/jcm11051223/s1>, Table S1: Clinical characteristics and lipid profile of the PREVEND study population; Table S2: Multivariable logistic regression analyses demonstrating independent associations of the presence of LP-Z in 130 pre-transplant cirrhotic patients from TransplantLines; Table S3: Multivariable linear regression analyses demonstrating independent associations of LP-Z in 130 pre-transplant cirrhotic patients from TransplantLines; Table S4: Linear regression analyses demonstrating independent associations of TRLP, LDLP, and HDLP in 130 pre-transplant cirrhotic patients from TransplantLines; Figure S1: Boxplot of TRLP, LDLP, and HDLP according to Child Pugh Turcotte classification in pre-transplant cirrhotic group. Boxplot A: TRLP, Boxplot B: LDLP, Boxplot C: HDLP. *p*-values were calculated with Kruskal–Wallis test. Abbreviations: HDLP, high density lipoprotein particles; LDLP, low density lipoprotein particles; LP-Z, lipoprotein Z; TRLP, triglyceride-rich lipoprotein particles; Figure S2: Distribution of TRLP, LDLP, and HDLP according to MELD score in pre-transplant cirrhotic group. Figure A: TRLP, Figure B: LDLP, Figure C: HDLP. Spearman rank correlation coefficients with *p*-values are given. Abbreviations: HDLP, high density lipoprotein particle; LDLP, low density lipoprotein particles; LP-Z, lipoprotein Z; MELD score, Model for End-Stage Liver Disease score; TRLP, triglyceride-rich lipoprotein particles.

Author Contributions: Conceptualization, E.H.v.d.B. and R.P.F.D.; formal analysis, E.H.v.d.B., J.L.F.-G. and R.P.F.D.; investigation, E.H.v.d.B., J.L.F.-G., E.G.G., M.A.C., E.G. and R.P.F.D.; writing—original draft preparation, E.H.v.d.B. and R.P.F.D.; writing—review and editing, E.H.v.d.B., J.L.F.-G., E.G.G., M.A.C., E.G., V.E.d.M., S.J.L.B., H.B. and R.P.F.D. All authors have read and agreed to the published version of the manuscript.

Funding: The TransplantLines Biobank was supported by a grant from Astellas BV.

Institutional Review Board Statement: The study was conducted according to the guidelines of the Declaration of Helsinki, and The TransplantLines study was approved by the Medical Ethics Committee of the University Medical Center Groningen (METc 2014/077). The TransplantLines Biobank and Cohort Study is registered at clinicaltrials.gov with trial registration number NCT03272841.

Informed Consent Statement: Informed consent was obtained from all subjects involved in the study.

Data Availability Statement: The data presented in this study are available on request from the corresponding author.

Acknowledgments: The authors wish to acknowledge the services of the TransplantLines Biobank and Cohort Study, PREVENT cohort study, and all the study participants. NMR measurements were performed at Labcorp (Morrisville, NC, USA) at no cost. TransplantLines investigators include: C. Annema-de Jong, S.J.L. Bakker, S.P. Berger, H. Blokkzijl, F.A.J.A. Bodewes, M.T. de Boer, K. Damman, M.H. de Borst, A. Diepstra, G. Dijkstra, R.M. Douwes, M.F. Eisenga, M.E. Erasmus, C.T. Gan, A.W. Gomes Neto, E. Hak, B.G. Hepkema, F. Klont, T.J. Knobbe, D. Kremer, H.G.D. Leuvenink, W.S. Lexmond, V.E. de Meijer, H.G.M. Niesters, L.J. van Pelt, R.A. Pol, R.J. Porte, A.V. Ranchor, J.S.F. Sanders, M.J. Siebelink, R.J.H.J.A. Slart, J.C. Swarte, D.J. Touw, M.C. van den Heuvel, C. van Leer-Buter, M. van Londen, E.A.M. Verschuuren, M.J. Vos, R.K. Weersma.

Conflicts of Interest: EG and MAC are employees of Labcorp, who carried out the NRM measurements and assisted with interpretation of the data. Labcorp was not involved in the study design, data analysis, nor with the decision to publish the results. VM reports a VENI research grant by the Netherlands Organization for Scientific Research (NWO; grant #09150161810030), a research grant from the Dutch Ministry of Economic Affairs (Health~Holland Public Private Partnership grant #PPP–2019–024), and a research grant from the Dutch Society for Gastroenterology (NVGE; #01–2021), all outside the submitted work. All other authors declare no conflicts of interest.

References

1. McIntyre, N. Plasma Lipids and Lipoproteins in Liver Disease. *Gut* **1978**, *19*, 526. [[CrossRef](#)] [[PubMed](#)]
2. Day, R.C.; Harry, D.S.; Owen, J.S.; Foo, A.Y.; McIntyre, N. Lecithin—Cholesterol Acyltransferase and the Lipoprotein Abnormalities of Parenchymal Liver Disease. *Clin. Sci.* **1979**, *56*, 575–583. [[CrossRef](#)] [[PubMed](#)]
3. Privitera, G.; Spadaro, L.; Marchisello, S.; Fede, G.; Purrello, F. Abnormalities of Lipoprotein Levels in Liver Cirrhosis: Clinical Relevance. *Digest. Dis. Sci.* **2018**, *63*, 16–26. [[CrossRef](#)]
4. Jonas, A. Lecithin Cholesterol Acyltransferase. *Biochim. Biophys. Acta-Mol. Cell Biol. Lipids* **2000**, *1529*, 245–256. [[CrossRef](#)]
5. Chatterjee, C.; Sparks, D.L. Hepatic Lipase, High Density Lipoproteins, and Hypertriglyceridemia. *Am. J. Pathol.* **2011**, *178*, 1429–1433. [[CrossRef](#)]
6. McIntyre, N.; Calandra, S.; Pearson, A.J.G. Lipid and Lipoprotein Abnormalities in Liver Disease: The Possible Role of Lecithin: Cholesterol Acyltransferase Deficiency. *Scand. J. Clin. Lab. Investig.* **2009**, *33*, 115–120. [[CrossRef](#)]
7. Tahara, D.; Nakanishi, T.; Akazawa, S.; Yamaguchi, Y.; Yamamoto, H.; Akashi, M.; Chikuba, N.; Okuno, S.; Maeda, Y.; Kusumoto, Y.; et al. Lecithin-Cholesterol Acyltransferase and Lipid Transfer Protein Activities in Liver Disease. *Metabolis* **1993**, *42*, 19–23. [[CrossRef](#)]
8. Simon, J.B.; Scheig, R. Serum Cholesterol Esterification in Liver Disease—Importance of Lecithin-Cholesterol Acyltransferase. *N. Engl. J. Med.* **1970**, *283*, 841–846. [[CrossRef](#)]
9. Agorastos, J.; Fox, C.; Harry, D.S.; McIntyre, N. Lecithin—Cholesterol Acyltransferase and the Lipoprotein Abnormalities of Obstructive Jaundice. *Clin. Sci.* **1978**, *54*, 369–379. [[CrossRef](#)]
10. Ghadir, M.R.; Riahin, A.A.; Havaspour, A.; Nooranipour, M.; Habibinejad, A.A. The Relationship between Lipid Profile and Severity of Liver Damage in Cirrhotic Patients. *Hepat. Mon.* **2010**, *10*, 285–288.
11. Chrostek, L.; Supronowicz, L.; Panasiuk, A.; Cylwik, B.; Gruszewska, E.; Flisiak, R. The Effect of the Severity of Liver Cirrhosis on the Level of Lipids and Lipoproteins. *Clin. Exp. Med.* **2014**, *14*, 417–421. [[CrossRef](#)]
12. Varghese, J.S.; Krishnaprasad, K.; Upadhuyay, R.; Revathy, M.S.; Jayanthi, V. Lipoprotein Profile in Cirrhosis of Liver. *Eur. J. Gastroenterol. Hepatol.* **2007**, *19*, 521–522. [[CrossRef](#)] [[PubMed](#)]
13. Sepanlou, S.G.; Safiri, S.; Bisignano, C.; Ikuta, K.S.; Merat, S.; Saberifiroozi, M.; Poustchi, H.; Tsoi, D.; Colombari, D.V.; et al.; GBD 2017 Cirrhosis Collaborators. The Global, Regional, and National Burden of Cirrhosis by Cause in 195 Countries and Territories, 1990–2017: A Systematic Analysis for the Global Burden of Disease Study 2017. *Lancet Gastroenterol. Hepatol.* **2020**, *5*, 245–266. [[CrossRef](#)]
14. Johnston, S.D.; Morris, J.K.; Cramb, R.; Gunson, B.K.; Neuberger, J. Cardiovascular Morbidity and Mortality after Orthotopic Liver Transplantation. *Transplantation* **2002**, *73*, 901–906. [[CrossRef](#)]
15. Fernández-Miranda, C.; Guijarro, C.; Calle, A.; Loinaz, C.; González-Pinto, I.; Gómez-Izquierdo, T.; Larumbe, S.; Moreno, E.; Palacio, A. Lipid Abnormalities in Stable Liver Transplant Recipients—Effects of Cyclosporin, Tacrolimus, and Steroids. *Transpl. Int.* **1998**, *11*, 137–142. [[CrossRef](#)] [[PubMed](#)]
16. Charco, R.; Cantarell, C.; Vargas, V.; Capdevila, L.; Lázaro, J.L.; Hidalgo, E.; Murio, E.; Margarit, C. Serum Cholesterol Changes in Long-term Survivors of Liver Transplantation: A Comparison between Cyclosporine and Tacrolimus Therapy. *Liver Transplant. Surg.* **1999**, *5*, 204–208. [[CrossRef](#)]
17. Lucey, M.R.; Terrault, N.; Ojo, L.; Hay, J.E.; Neuberger, J.; Blumberg, E.; Teperman, L.W. Long-term Management of the Successful Adult Liver Transplant: 2012 Practice Guideline by the American Association for the Study of Liver Diseases and the American Society of Transplantation. *Liver Transpl.* **2013**, *19*, 3–26. [[CrossRef](#)]
18. Laish, I.; Braun, M.; Mor, E.; Sulkes, J.; Harif, Y.; Ari, Z.B. Metabolic Syndrome in Liver Transplant Recipients: Prevalence, Risk Factors, and Association with Cardiovascular Events. *Liver Transpl.* **2011**, *17*, 15–22. [[CrossRef](#)]

19. Xanthopoulos, A.; Starling, R.C.; Kitai, T.; Triposkiadis, F. Heart Failure and Liver Disease Cardiohepatic Interactions. *JACC Heart Fail.* **2019**, *7*, 87–97. [[CrossRef](#)] [[PubMed](#)]
20. Stegall, M.D.; Everson, G.; Schroter, G.; Bilir, B.; Karrer, F.; Kam, I. Metabolic Complications after Liver Transplantation. Diabetes, Hypercholesterolemia, Hypertension, and Obesity. *Transplantation* **1995**, *60*, 1057–1060.
21. McCaughan, G.W.; O'Brien, E.; Sheil, A.G.R. A Follow up of 53 Adult Patients Alive beyond 2 Years Following Liver Transplantation. *J. Gastroenterol. Hepatol.* **1993**, *8*, 569–573. [[CrossRef](#)] [[PubMed](#)]
22. Jindal, R.M.; Sidner, R.A.; Hughes, D.; Pescovitz, M.D.; Leapman, S.B.; Milgrom, M.L.; Lumeng, L.; Filo, R.S. Metabolic Problems in Recipients of Liver Transplants. *Clin. Transplant.* **1996**, *10*, 213–217.
23. McDiarmid, S.V.; Farmer, D.A.; Goldstein, L.I.; Martin, P.; Vargas, J.; Tipton, J.R.; Simmons, F.; Busuttil, R.W. A Randomized Prospective Trial of Steroid Withdrawal after Liver Transplantation. *Transplantation* **1995**, *60*, 1443–1450. [[CrossRef](#)]
24. Punch, J.D.; Shieck, V.L.; Campbell, D.A.; Bromberg, J.S.; Turcotte, J.G.; Merion, R.M. Corticosteroid Withdrawal after Liver Transplantation. *Surgery* **1995**, *118*, 783–788. [[CrossRef](#)]
25. Holdaas, H.; Potena, L.; Saliba, F. MTOR Inhibitors and Dyslipidemia in Transplant Recipients: A Cause for Concern? *Transplant. Rev.* **2015**, *29*, 93–102. [[CrossRef](#)]
26. Varbo, A.; Benn, M.; Tybjaerg-Hansen, A.; Jørgensen, A.B.; Frikke-Schmidt, R.; Nordestgaard, B.G. Remnant Cholesterol as a Causal Risk Factor for Ischemic Heart Disease. *J. Am. Coll. Cardiol.* **2013**, *61*, 427–436. [[CrossRef](#)] [[PubMed](#)]
27. Duran, E.K.; Aday, A.W.; Cook, N.R.; Buring, J.E.; Ridker, P.M.; Pradhan, A.D. Triglyceride-Rich Lipoprotein Cholesterol, Small Dense LDL Cholesterol, and Incident Cardiovascular Disease. *J. Am. Coll. Cardiol.* **2020**, *75*, 2122–2135. [[CrossRef](#)]
28. Singh, K.; Chandra, A.; Sperry, T.; Joshi, P.H.; Khera, A.; Virani, S.S.; Ballantyne, C.M.; Otvos, J.D.; Dullaart, R.P.F.; Gruppen, E.G.; et al. Associations Between HDL Particles and Ischemic Events by Vascular Domain, Gender, and Ethnicity: A Pooled Cohort Analysis. *Circulation* **2020**, *142*, 657–669. [[CrossRef](#)]
29. Sokooti, S.; Flores-Guerrero, J.L.; Kieneker, L.M.; Heerspink, H.J.L.; Connelly, M.A.; Bakker, S.J.L.; Dullaart, R.P.F. HDL Particle Subspecies and Their Association with Incident Type 2 Diabetes: The PREVEND Study. *J. Clin. Endocrinol. Metab.* **2021**, *106*, 1761–1772. [[CrossRef](#)] [[PubMed](#)]
30. Sokooti, S.; Szili-Torok, T.; Flores-Guerrero, J.L.; Osté, M.C.J.; Gomes-Neto, A.W.; Kootstra-Ros, J.E.; Heerspink, H.J.L.; Connelly, M.A.; Bakker, S.J.L.; Dullaart, R.P.F. High-Density Lipoprotein Particles and Their Relationship to Posttransplantation Diabetes Mellitus in Renal Transplant Recipients. *Biomolecules* **2020**, *10*, 481. [[CrossRef](#)]
31. Sokooti, S.; Flores-Guerrero, J.L.; Heerspink, H.J.L.; Connelly, M.A.; Bakker, S.J.L.; Dullaart, R.P.F. Triglyceride-Rich Lipoprotein and LDL Particle Subfractions and Their Association with Incident Type 2 Diabetes: The PREVEND Study. *Cardiovasc. Diabetol.* **2021**, *20*, 156. [[CrossRef](#)] [[PubMed](#)]
32. Abbasi, A.; Corpeleijn, E.; Gansevoort, R.T.; Gans, R.O.B.; Hillege, H.L.; Stolck, R.P.; Navis, G.; Bakker, S.J.L.; Dullaart, R.P.F. Role of HDL Cholesterol and Estimates of HDL Particle Composition in Future Development of Type 2 Diabetes in the General Population: The PREVEND Study. *J. Clin. Endocrinol. Metab.* **2013**, *98*, E1352–E1359. [[CrossRef](#)]
33. Bedi, S.; Garcia, E.; Jeyarajah, E.J.; Shalaurova, I.; Perez-Matos, M.C.; Jiang, Z.G.; Dullaart, R.P.F.; Matyus, S.P.; Kirk, W.J.; Otvos, J.D.; et al. Characterization of LP-Z Lipoprotein Particles and Quantification in Subjects with Liver Disease Using a Newly Developed NMR-Based Assay. *J. Clin. Med.* **2020**, *9*, 2915. [[CrossRef](#)] [[PubMed](#)]
34. Kostner, G.M.; Laggner, P.; Prexl, H.J.; Holasek, A. Investigation of the Abnormal Low-Density Lipoproteins Occurring in Patients with Obstructive Jaundice. *Biochem. J.* **1976**, *157*, 401–407. [[CrossRef](#)]
35. Eisenga, M.F.; Gomes-Neto, A.W.; van Londen, M.; Ziegns, A.L.; Douwes, R.M.; Stam, S.P.; Osté, M.C.J.; Knobbe, T.J.; Hessels, N.R.; Buunk, A.M.; et al. Rationale and Design of TransplantLines: A Prospective Cohort Study and Biobank of Solid Organ Transplant Recipients. *BMJ Open* **2018**, *8*, e024502. [[CrossRef](#)]
36. Borggreve, S.E.; Hillege, H.L.; Wolffenbutter, B.H.R.; de Jong, P.E.; Bakker, S.J.L.; van der Steege, G.; van Tol, A.; Dullaart, R.P.F.; on behalf of the PREVEND Study Group. The Effect of Cholesteryl Ester Transfer Protein -629C->A Promoter Polymorphism on High-Density Lipoprotein Cholesterol Is Dependent on Serum Triglycerides. *J. Clin. Endocrinol. Metab.* **2005**, *90*, 4198–4204. [[CrossRef](#)]
37. Kappelle, P.J.W.H.; Gansevoort, R.T.; Hillege, J.L.; Wolffenbutter, B.H.R.; Dullaart, R.P.F.; on behalf of the PREVEND study group. Apolipoprotein B/A-I and Total Cholesterol/High-Density Lipoprotein Cholesterol Ratios Both Predict Cardiovascular Events in the General Population Independently of Nonlipid Risk Factors, Albuminuria and C-Reactive Protein. *J. Intern. Med.* **2011**, *269*, 232–242. [[CrossRef](#)]
38. Kamath, P.S.; Wiesner, R.H.; Malinchoc, M.; Kremers, W.; Therneau, T.M.; Kosberg, C.L.; D'Amico, G.; Dickson, E.R.; Kim, W.R. A Model to Predict Survival in Patients with End-Stage Liver Disease. *Hepatology* **2001**, *33*, 464–470. [[CrossRef](#)]
39. Wiesner, R.; Edwards, E.; Freeman, R.; Harper, A.; Kim, R.; Kamath, P.; Kremers, W.; Lake, J.; Howard, T.; Merion, R.M.; et al. Model for End-Stage Liver Disease (MELD) and Allocation of Donor Livers. *Gastroenterology* **2003**, *124*, 91–96. [[CrossRef](#)]
40. Pugh, R.N.; Murray-Lyon, I.M.; Dawson, J.L.; Pietroni, M.C.; Williams, R. Transection of the Oesophagus for Bleeding Oesophageal Varices. *Br. J. Surg.* **1973**, *60*, 646–649. [[CrossRef](#)]
41. van den Berg, E.H.; Flores-Guerrero, J.L.; Gruppen, E.G.; de Borst, M.H.; Wolak-Dinsmore, J.; Connelly, M.A.; Bakker, S.J.L.; Dullaart, R.P.F. Non-Alcoholic Fatty Liver Disease and Risk of Incident Type 2 Diabetes: Role of Circulating Branched-Chain Amino Acids. *Nutrients* **2019**, *11*, 705. [[CrossRef](#)] [[PubMed](#)]

42. Wolak-Dinsmore, J.; Gruppen, E.G.; Shalaurova, I.; Matyus, S.P.; Grant, R.P.; Gegen, R.; Bakker, S.J.L.; Otvos, J.D.; Connelly, M.A.; Dullaart, R.P.F. A Novel NMR-Based Assay to Measure Circulating Concentrations of Branched-Chain Amino Acids: Elevation in Subjects with Type 2 Diabetes Mellitus and Association with Carotid Intima Media Thickness. *Clin. Biochem.* **2018**, *54*, 92–99. [[CrossRef](#)]
43. Matyus, S.P.; Braun, P.J.; Wolak-Dinsmore, J.; Jeyarajah, E.J.; Shalaurova, I.; Xu, Y.; Warner, S.M.; Clement, T.S.; Connelly, M.A.; Fischer, T.J. NMR Measurement of LDL Particle Number Using the Vantera[®] Clinical Analyzer. *Clin. Biochem.* **2014**, *47*, 203–210. [[CrossRef](#)] [[PubMed](#)]
44. Matyus, S.P.; Braun, P.J.; Wolak-Dinsmore, J.; Saenger, A.K.; Jeyarajah, E.J.; Shalaurova, I.; Warner, S.M.; Fischer, T.J.; Connelly, M.A. HDL Particle Number Measured on the Vantera[®], the First Clinical NMR Analyzer. *Clin. Biochem.* **2015**, *48*, 148–155. [[CrossRef](#)] [[PubMed](#)]
45. Jeyarajah, E.J.; Cromwell, W.C.; Otvos, J.D. Lipoprotein Particle Analysis by Nuclear Magnetic Resonance Spectroscopy. *Clin. Lab. Med.* **2006**, *26*, 847–870. [[CrossRef](#)]
46. Garcia, E.; Bennett, D.W.; Connelly, M.A.; Jeyarajah, E.J.; Warf, F.C.; Shalaurova, I.; Matyus, S.P.; Wolak-Dinsmore, J.; Oskardmay, D.N.; Young, R.M.; et al. The Extended Lipid Panel Assay: A Clinically-Deployed High-Throughput Nuclear Magnetic Resonance Method for the Simultaneous Measurement of Lipids and Apolipoprotein B. *Lipids Health Dis.* **2020**, *19*, 247. [[CrossRef](#)]
47. Freeman, L.A.; Shamburek, R.D.; Sampson, M.L.; Neufeld, E.B.; Sato, M.; Karathanasis, S.K.; Remaley, A.T. Plasma Lipoprotein-X Quantification on Filipin-Stained Gels: Monitoring Recombinant LCAT Treatment Ex Vivo. *J. Lipid Res.* **2019**, *60*, 1050–1057. [[CrossRef](#)]
48. Newson, R.B. Comparing the Predictive Powers of Survival Models Using Harrell's C or Somers' D. *Stata J.* **2010**, *10*, 339–358. [[CrossRef](#)]
49. Seidel, D. Lipoproteins in Liver Disease. *Clin. Chem. Lab. Med.* **1987**, *25*, 541–552. [[CrossRef](#)]
50. Müller, P.; Fellin, R.; Lambrecht, J.; Agostini, B.; Wieland, H.; Rost, W.; Seidel, D. Hypertriglyceridaemia Secondary to Liver Disease. *Eur. J. Clin. Invest.* **1974**, *4*, 419–428. [[CrossRef](#)]
51. Jiang, X.-C.; Qin, S.; Qiao, C.; Kawano, K.; Lin, M.; Skold, A.; Xiao, X.; Tall, A.R. Apolipoprotein B Secretion and Atherosclerosis Are Decreased in Mice with Phospholipid-Transfer Protein Deficiency. *Nat. Med.* **2001**, *7*, 847–852. [[CrossRef](#)] [[PubMed](#)]
52. Swenson, T.; Simmons, J.; Hesler, C.; Bisgaier, C.; Tall, A. Cholesteryl Ester Transfer Protein Is Secreted by Hep G2 Cells and Contains Asparagine-Linked Carbohydrate and Sialic Acid. *J. Biol. Chem.* **1987**, *262*, 16271–16274. [[CrossRef](#)]
53. Vergeer, M.; Boekholdt, S.M.; Sandhu, M.S.; Ricketts, S.L.; Wareham, N.J.; Brown, M.J.; de Faire, U.; Leander, K.; Gigante, B.; Kavousi, M.; et al. Genetic Variation at the Phospholipid Transfer Protein Locus Affects Its Activity and High-Density Lipoprotein Size and Is a Novel Marker of Cardiovascular Disease Susceptibility. *Circulation* **2010**, *122*, 470–477. [[CrossRef](#)] [[PubMed](#)]
54. Van Dijk, P.R.; Abdulle, A.E.; Bulthuis, M.L.C.; Perton, F.G.; Connelly, M.A.; van Goor, H.; Dullaart, R.P.F. The Systemic Redox Status Is Maintained in Non-Smoking Type 2 Diabetic Subjects without Cardiovascular Disease: Association with Elevated Triglycerides and Large VLDL. *J. Clin. Med.* **2019**, *9*, 49. [[CrossRef](#)] [[PubMed](#)]
55. Lagrost, L. Plasma Phospholipid Transfer Protein: A Multifaceted Protein with a Key Role in the Assembly and Secretion of Apolipoprotein B-Containing Lipoproteins by the Liver. *Hepatology* **2012**, *56*, 415–418. [[CrossRef](#)]
56. Bassani, L.; Fernandes, S.A.; Raimundo, F.V.; Harter, D.L.; Gonzalez, M.C.; Marroni, C.A. Lipid Profile Of Cirrhotic Patients And Its Association with Prognostic Scores: A Cross-Sectional Study. *Arq. Gastroenterol.* **2015**, *52*, 210–215. [[CrossRef](#)]
57. Borggreve, S.E.; Vries, R.D.; Dullaart, R.P.F. Alterations in High-density Lipoprotein Metabolism and Reverse Cholesterol Transport in Insulin Resistance and Type 2 Diabetes Mellitus: Role of Lipolytic Enzymes, Lecithin: Cholesterol Acyltransferase and Lipid Transfer Proteins. *Eur. J. Clin. Invest.* **2003**, *33*, 1051–1069. [[CrossRef](#)]
58. Eppinga, R.N.; Hartman, M.H.T.; van Veldhuisen, D.J.; Lexis, C.P.H.; Connelly, M.A.; Lipsic, E.; van der Horst, I.C.C.; van der Harst, P.; Dullaart, R.P.F. Effect of Metformin Treatment on Lipoprotein Subfractions in Non-Diabetic Patients with Acute Myocardial Infarction: A Glycometabolic Intervention as Adjunct to Primary Coronary Intervention in ST Elevation Myocardial Infarction (GIPS-III) Trial. *PLoS ONE* **2016**, *11*, e0145719. [[CrossRef](#)]
59. Hu, K.; Perez-Matos, M.C.; Argemi, J.; Vilar, E.; Shalaurova, I.; Bullitt, E.; Landeen, L.; Sugahara, G.; Deng, H.; Mathur, K.; et al. Lipoprotein Z, A Novel Hepatotoxic Lipoprotein, Predicts Outcome in Alcoholic Hepatitis. *Hepatology*, 2021; *online ahead of print*. [[CrossRef](#)]
60. Pavanello, C.; Calabresi, L. Genetic, Biochemical, and Clinical Features of LCAT Deficiency: Update for 2020. *Curr. Opin. Lipidol.* **2020**, *31*, 232–237. [[CrossRef](#)]