

University of Groningen

Factors associated with poor outcome in fetuses prenatally diagnosed with sacrococcygeal teratoma

van Heurn, Lieke J.; Coumans, Audrey B. C.; Derikx, Joep P. M.; Bekker, Mireille N.; Bilardo, Katia M.; Duin, Leonie K.; Knapen, Maarten F. C. M.; Pajkrt, Eva; Sikkel, Esther; van Heurn, L. W. Ernest

Published in:
Prenatal Diagnosis

DOI:
[10.1002/pd.6026](https://doi.org/10.1002/pd.6026)

IMPORTANT NOTE: You are advised to consult the publisher's version (publisher's PDF) if you wish to cite from it. Please check the document version below.

Document Version
Publisher's PDF, also known as Version of record

Publication date:
2021

[Link to publication in University of Groningen/UMCG research database](#)

Citation for published version (APA):

van Heurn, L. J., Coumans, A. B. C., Derikx, J. P. M., Bekker, M. N., Bilardo, K. M., Duin, L. K., Knapen, M. F. C. M., Pajkrt, E., Sikkel, E., van Heurn, L. W. E., & Oepkes, D. (2021). Factors associated with poor outcome in fetuses prenatally diagnosed with sacrococcygeal teratoma. *Prenatal Diagnosis*, 41(11), 1430-1438. <https://doi.org/10.1002/pd.6026>

Copyright


Other than for strictly personal use, it is not permitted to download or to forward/distribute the text or part of it without the consent of the author(s) and/or copyright holder(s), unless the work is under an open content license (like Creative Commons).

The publication may also be distributed here under the terms of Article 25fa of the Dutch Copyright Act, indicated by the "Taverne" license. More information can be found on the University of Groningen website: <https://www.rug.nl/library/open-access/self-archiving-pure/taverne-amendment>.

Take-down policy

If you believe that this document breaches copyright please contact us providing details, and we will remove access to the work immediately and investigate your claim.

Factors associated with poor outcome in fetuses prenatally diagnosed with sacrococcygeal teratoma

Lieke J. van Heurn¹  | Audrey B. C. Coumans² | Joep P. M. Derikx¹ |
Mireille N. Bekker³ | Katia M. Bilardo⁴ | Leonie K. Duin⁵ |
Maarten F. C. M. Knapen⁶ | Eva Pajkrt⁷ | Esther Sikkel⁸ | L. W. Ernest van Heurn¹ |
Dick Oepkes⁹

¹Department of P(a)ediatric Surgery, Emma Children's Hospital, Amsterdam UMC, University of Amsterdam & Vrije Universiteit Amsterdam, Amsterdam, The Netherlands

²Department of Obstetrics and Gynaecology, Maastricht UMC+, Maastricht, The Netherlands

³Department of Obstetrics, University Medical Center Utrecht, Utrecht, The Netherlands

⁴Department of Obstetrics and Gynaecology, Amsterdam University Medical Centers, Amsterdam, The Netherlands

⁵Department of Obstetrics, Gynaecology and Prenatal Diagnosis, University Medical Center Groningen, University of Groningen, Groningen, The Netherlands

⁶Department of Obstetrics and Fetal Medicine, Erasmus Medical Center, Rotterdam, The Netherlands

⁷Department of Obstetrics, Amsterdam UMC, University of Amsterdam & Vrije Universiteit Amsterdam, Amsterdam, The Netherlands

⁸Department of Obstetrics and Gynecology, Radboud University Medical Center Nijmegen, Nijmegen, The Netherlands

⁹Department of Obstetrics and Fetal Medicine, Leiden University Medical Center, Leiden, The Netherlands

Correspondence

Lieke J. van Heurn, Department of P(a)ediatric Surgery, Amsterdam UMC, Meibergdreef 9, 1105 AZ, Amsterdam, The Netherlands.
Email: l.j.vanheurn@amsterdamumc.nl

Abstract

Aim of the study: Outcome of fetuses, prenatally diagnosed with sacrococcygeal teratoma (SCT), is still poorly documented. This study assesses the incidence and prenatal predictors of outcome in all fetuses prenatally diagnosed with SCT.

Methods: This is a retrospective study on all fetuses prenatally diagnosed with SCT from 1998 to 2018 in the Netherlands. Poor outcome was defined as terminations of pregnancy (TOP) because of expected unfavorable outcome, intrauterine fetal death, or early neonatal death. Potential risk factors for poor outcome were analyzed.

Main results: Eighty-four fetuses were included. Sixteen (19.0%) TOPs were excluded from statistical analysis. Eleven of the remaining 68 fetuses had poor outcome. Overall mortality was 32.1%, with a mortality excluding TOPs of 13.1%. Thirteen fetal interventions were performed in 11 (13.1%) fetuses. Potential risk factors for poor outcome were the presence of fetal hydrops (OR: 21.0, CI: 2.6–275.1, $p = 0.012$) and cardiomegaly (OR: 10.3, CI: 1.9–55.8, $p = 0.011$).

Conclusions: The overall mortality of fetuses prenatally diagnosed with SCTs including tTOP was 32.1%. This high mortality rate was mainly due to termination of pregnancy. Mortality excluding TOP was 13.1%. Potential risk factors for poor outcome were fetal hydrops and cardiomegaly.

Key points

What's already known about the topic?

- 50%–82% of sacrococcygeal teratomas (SCTs) are currently diagnosed in the prenatal period.
- Perinatal mortality rate of prenatally diagnosed SCT varies between 13% and 50%.
- High tumor volume index (TVI), fast SCT growth rate, and predominantly solid, highly vascularized tumors are factors predictive for poor outcome.

This is an open access article under the terms of the Creative Commons Attribution-NonCommercial-NoDerivs License, which permits use and distribution in any medium, provided the original work is properly cited, the use is non-commercial and no modifications or adaptations are made.

© 2021 The Authors. Prenatal Diagnosis published by John Wiley & Sons Ltd.

What does this study add?

- The incidence of patients prenatally diagnosed with SCT is approximately one in 35,000 with a poor outcome in 13%.
- Fetal hydrops and cardiomegaly are both risk factors for poor outcome in fetuses prenatally diagnosed with SCT.

1 | INTRODUCTION

Sacrococcygeal teratoma (SCT) is the most common congenital neoplasm with an estimated incidence of 1 per 28,500 newborns in the Netherlands.¹ Children with postnatally diagnosed SCTs have a good prognosis after surgical resection, with only a small risk of demise due to perioperative hemorrhage during or soon after birth.²⁻⁵

Malignant disease at the time of initial diagnosis occurs in 11%–35% of patients.² In many of these patients, the diagnosis SCT is only made several months or years after birth, due to a mainly internal position of the tumor. The likelihood of malignant transformation in SCT increases with age, resulting in malignancy rates up to 70% if SCT is diagnosed at the age of 1 year.⁶

With the introduction of routine prenatal ultrasound, 50%–82% of SCTs are currently diagnosed in the prenatal period.^{7,8} Fetuses with prenatally diagnosed SCTs have a high risk of death despite fetal interventions which may improve the outcome.⁹ The perinatal mortality rate varies between 13% and 50%, and most of these deaths are attributed to cardiac failure, exsanguinating tumor hemorrhage, or both.^{8,10-13} Moreover, 9%–24% of the parents choose termination of pregnancy (TOP).^{9,14,15}

Factors such as high tumor volume index (TVI), fast SCT growth rate, and predominantly solid, highly vascularized tumors are predictive for poor outcome, defined as prenatal or early neonatal death.¹⁶⁻¹⁹ All these prognostic factors suggest cardiac overload from a high-output status with fetal hydrops as the underlying pathophysiologic mechanism. Cardiac overload and hydrops are associated with poor outcome.²⁰ Most studies on the outcome of prenatally diagnosed SCT were conducted in single institutions with relatively small numbers of patients often with selection bias because some of the institutions were specialized centers for fetal treatment.^{16,21,22}

We aimed to determine the incidence and outcome of all cases with the prenatal diagnosis SCT in one of the seven Dutch Fetal Medicine Units (FMU) between January 1998 and December 2018 and to evaluate potential risk factors for poor outcome.

2 | MATERIALS AND METHODS

2.1 | Patients and study design

The medical records of all fetuses with the prenatal diagnosis SCT between January 1998 and December 2018 at the seven Fetal Medicine Units in the Netherlands (Amsterdam University Medical Centers, Erasmus Medical Center Rotterdam, Leiden University

Medical Center, Maastricht University Medical Center, St. Radboud University Medical Center Nijmegen, University Medical Center Groningen, University Medical Center Utrecht) were studied retrospectively. In all centers, Astraia (Astraia Software GmbH, Munich), MososU (ICT Healthcare Technology Solutions, Houten), or HiX (Hospital information eXchange, Chipsoft, Amsterdam) software were used for patient registration. Clinical and outcome data were collected from the original medical records. Medical records contained information retrieved by systematically conducted ultrasound.

All patients with complete follow-up until TOP, intrauterine fetal death (IUFD), or live birth were included in the study. TOPs were excluded from statistical analysis unless the medical record clearly stated that the parent's decision for TOP was based on expected unfavorable outcome. The patients included in statistical analysis were divided in poor outcome and good outcome groups.

2.2 | Statistical analysis and definitions

The incidence of fetuses prenatally diagnosed with SCT was calculated per decade by dividing the number of fetuses by the number of births in the Netherlands.²³ Poor outcome was defined as IUFD, early neonatal death (ENND), or TOP, if parent's decision was based on expected non-vital outcome. Intrauterine fetal death was defined as an infant delivered without signs of life after 24 weeks of gestation.²⁴ Univariate and multivariate relative risk analyses for outcome were carried out for variables measurable before birth, using logistic regression. Risk factors investigated, with their respective categories, were Altman classification (grade I and II vs. III and IV),²⁵ gestational age (GA) at diagnosis (<24, ≥24), morphology (cystic, solid), cardiomegaly (yes, no), polyhydramnios (yes, no), fetal hydrops (yes, no), and highly vascularized tumor (yes, no). Tumor location was categorized according to Altman's classification determined by prenatal ultrasound. Polyhydramnios was defined as a single deepest vertical amniotic pocket diameter of >8 cm. The presence of signs of fetal hydrops was defined as presence of fetal subcutaneous tissue edema accompanied by abnormal fluid collection in more than one other area of the fetal body. Vascularity was determined by Doppler ultrasound. TVI was calculated as the largest diameter of the tumor divided by the head circumference, to adjust for gestational age.

Categorical variables were compared with Fisher's exact test. Statistical analyses were performed using SPSS for Windows version 25.0 software (SPSS) and Graph Pad Prism 8 (GraphPad Software, Inc.). Unless stated otherwise, data are expressed as mean (SD). $P < 0.05$ was considered statistically significant.

According to the Medical Ethical Board of AMC, the Medical Research Involving Human Subjects Act (WMO) does not apply to the study and official approval of the committee was not required (reference number: W19_112 # 19.145).

3 | RESULTS

3.1 | Patient characteristics

From 1998 to 2018, 88 fetuses were suspected to have SCT in one of the seven Dutch Fetal Medicine Units (Figure 1). The calculated incidence was 1 in 69,174 fetuses in 1998–2008 and 1 in 34,355 in 2009–2018.

Four fetuses that had not been followed until TOP, IUFD, or live birth owing to maternal transfer were excluded from the study, so 84 fetuses with the prenatal diagnosis SCT were included in the study.

Eighteen were male (21.4%) and 62 were female (73.8%). In four (4.8%), sex was unknown. Two cases were multiple pregnancies: one trichorionic, triamniotic triplet and one monochorionic, diamniotic twin; in both cases, only one fetus was affected.

Eighteen out of 84 (21.4%) pregnancies were terminated before GA 23 weeks. In two cases, the parent's decision for termination was based on expected unfavorable outcome due to extensive tumor growth and were therefore included in statistical analysis. In the other 16 fetuses, the reason for the parent's decision of termination was unknown. These 16 fetuses were therefore excluded from statistical analyses. Two fetuses (2.4%) died in utero, both at GA 25 weeks. Sixty-four fetuses (76.2%) were born alive.

Twenty fetuses (31.2%) were born before GA 37 weeks, 38 fetuses (59.4%) were delivered at term, and in 6 fetuses (9.4%) GA at birth was unknown. Twenty-eight fetuses (43.7%) were born vaginally, 30 (46.9%) were born by cesarean section and in 6 (9.4%)

mode of delivery was unknown. Their mean GA at diagnosis was 22.5 (SD 4.9) weeks and their mean GA at birth was 36.2 (SD 4.1), with a mean birth weight of 3.1 (SD 0.95) kg.

Eleven fetuses (13.1%) had associated anomalies which may be attributed to the SCT including genitourinary ($n = 5$; hydro-nephrosis and bladder dilation) and anorectal malformations ($n = 3$; anal atresia), musculoskeletal disorders ($n = 2$; clubfoot), and pulmonary disorder ($n = 1$; pulmonary hypoplasia). Furthermore, two (2.4%) fetuses had additional structural anomalies, neural ($n = 1$; spina bifida) and cardiovascular ($n = 1$; atrial and ventricular septal defect).

Fifty-three fetuses (63.1%) had a predominantly external tumor (Altman I or II) (Figure 2) and 13 (15.5%) had a predominantly internal tumor (Altman III or IV) (Figure 3); in 7 fetuses (8.3%) distinction

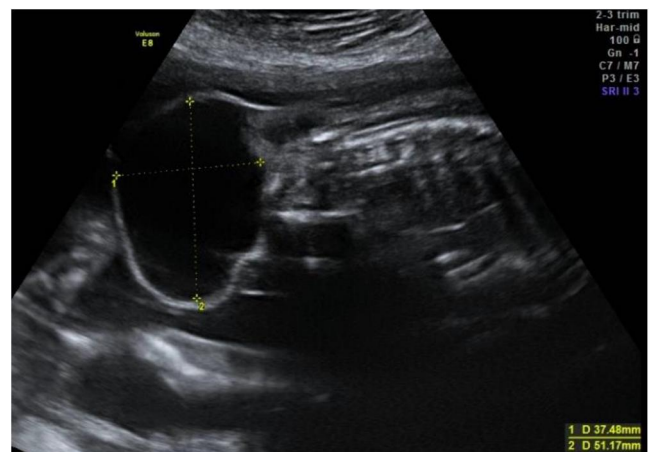


FIGURE 2 Ultrasound of a cystic type I sacrococcygeal teratoma at 22 weeks' gestation. The fetus was delivered with planned cesarean section at 38 weeks' gestation because of breech position. The baby survived [Colour figure can be viewed at wileyonlinelibrary.com]



FIGURE 3 Ultrasound of cystic Altman type III sacrococcygeal teratoma at 26 weeks' gestation. The fetus was born with a spontaneous vaginal delivery at 40 weeks' gestation. The baby survived [Colour figure can be viewed at wileyonlinelibrary.com]

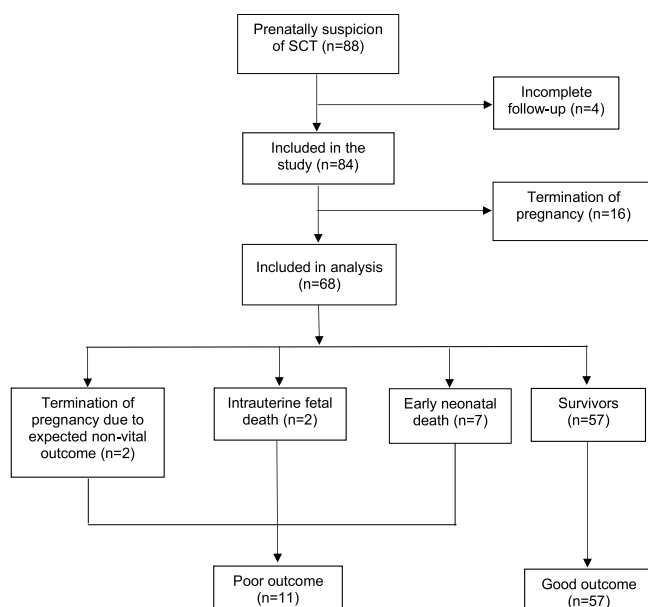


FIGURE 1 The outcomes of prenatally diagnosed sacrococcygeal teratoma (1998–2018)

TABLE 1 Intrauterine transfusion

GA	Transfusion	Hb-prior (g/dl)	Hb-post (g/dl)	Outcome
25 + 0	Unknown	Unknown	7.6	IUFD at GA 25 + 1
26 + 3	65 ml erythrocyte concentrate	4.0	9.3	ENND at GA 27 + 0
28 + 0	30 ml erythrocyte concentrate in hepatic vein, 30 ml intraperitoneal	9.5	12.2	ENND at GA 31 + 1
33 + 5	68 ml erythrocyte concentrate	12.4	15.3	Labor induction at GA 34 + 3, survived

Abbreviations: ENND, early neonatal death; GA, gestational age; Hb, hemoglobin; IUFD, intrauterine fetal death.

between predominantly external or internal tumor could not be made. In 11 (13.1%) fetuses, Altman classification was unknown.

After resection and pathological evaluation, one fetus was diagnosed with infantile myofibroma and one fetus with lymphangioma instead of SCT. The fetus with lymphangioma had a good outcome and the fetus with infantile myofibroma died within the first week of life. So, two fetuses (2.4%) were prenatally misdiagnosed with SCT.

3.2 | Fetal intervention

Thirteen fetal interventions were performed in 11 (13.1%) fetuses. In four, an intrauterine transfusion was performed because of anemia. Corresponding hemoglobin (Hb) values are described in Table 1. One fetus was transfused because of bleeding the tumor mass, two because of high-output status from the vascular steal of the tumor, and in one fetus the reason for transfusion was unknown. Three of the four fetuses that received intrauterine transfusion had poor outcomes: one died in utero at GA 25 weeks and two fetuses died within 24 h after birth. The first fetus died due to intratumoral hemorrhage at GA 27 weeks (Figure 4) and the second fetus died at GA 31 weeks of an unspecified cause of death. In the last fetus, anemia was suspected; however, hemoglobin was 12.4 g/dl with a fetal middle cerebral arterial (MCA) peak systolic velocity (PSV) of 81 cm/s measured with Doppler. Furthermore, this fetus received amnioreduction of 2500 ml and drainage of a cystic SCT component. The fetus was born at GA 34 weeks and survived. One fetus received ultrasound guided interstitial laser coagulation at GA 25 weeks because of maternal mirror syndrome. Vascularization could be well visualized on ultrasound; however, the base of the vessels was located within the small pelvis. Therefore, not all vessels could be coagulated. The fetus was delivered at GA 27 weeks and died shortly after birth. The mother survived with no remaining symptoms. Six other fetuses (46%) survived: in the first fetus, the cystic SCT was punctured at GA 21 weeks. In the other three fetuses, cystic SCT was punctured prior to delivery at GA 31 weeks, GA 38 weeks, and GA 40 weeks, respectively. In the other two fetuses, amniodrainage of 1800–1850 ml was performed because of polyhydramnios.

3.3 | Poor outcome

In two cases (2.4%), parents chose TOP because of expected unfavorable outcome: one because of fast tumor growth of a highly vascularized

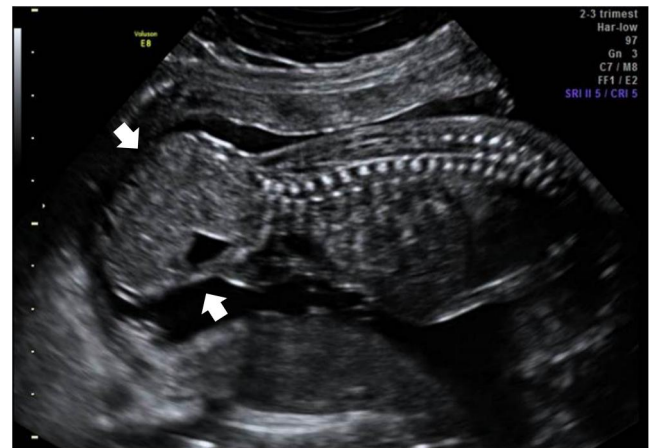


FIGURE 4 Ultrasound of type I hypervascular sacrococcygeal teratoma consisting of cystic and solid components at 21 weeks' gestation. This fetus received intrauterine transfusion at 26 weeks because of anemia. At 27 weeks, the fetus was delivered by cesarean section and died shortly after birth due to intratumor hemorrhage [Colour figure can be viewed at wileyonlinelibrary.com]

type I SCT with 22-mm increase in diameter from 20 to 22 weeks gestation. In the other fetuses, the TOP was because of a high risk of fetal hydrops due to a highly vascularized tumor with a diameter of 57 mm at 19 weeks gestation. Two fetuses (2.4%) died in utero, both at GA 25 weeks because of heart failure, one of whom received an intrauterine transfusion because of anemia and died 1 day after it. Seven (8.3%) of 64 surviving neonates died in the first week after birth because of heart failure and hemorrhagic shock. Table 2 shows patient- and disease-related characteristics of the 11 fetuses with poor outcome.

3.4 | Risk factors for poor outcome

In 68 fetuses, risk factors for poor outcome were analyzed with statistical analysis. In a univariate analysis, fetuses with cardiomegaly ($P = 0.011$) and fetal hydrops ($P = 0.012$) were at increased risk of poor outcome. Both cardiomegaly and fetal hydrops remained significant when the statistical analysis was adjusted for other factors (Table 3) in multivariate analysis. Other factors, including Altman classification, ultrasound aspect of the SCT, GA at diagnosis, polyhydramnios, and a highly vascularized tumor were not predictive for poor outcome in fetuses with the prenatally diagnosis SCT.

TABLE 2 Characteristics of fetuses with poor outcome

Sex	Year of diagnosis	GA diagnosis (weeks)	Altman type	Maximal tumor diameter (cm) (GA)	Estimated tumor volume (cm ³) (GA)	Fetal intervention (GA)	GA at death (weeks)	Outcome	Cause of death
Female	2001	19	Type I/II	5.2 (22 weeks)	105 (22 weeks)	None	22	TOP	Rapid SCT growth
Unknown	2001	19	Type I/II	5.7 (19 weeks)	Unknown	None	19	TOP	Highly vascularized SCT
Male	2002	32	Type I/II	10.2 (32 weeks)	734 (32 weeks)	None	Unknown	ENND	Heart failure: death during operation
Female	2003	29	Type I/II	Unknown	Unknown	None	30	ENND	Hemorrhagic shock
Female	2007	21	Type I/II	13.2 (26 weeks)	1932 (26 weeks)	Interstitial laser coagulation (25 weeks)	27	ENND	Heart failure
Female	2008	21	Type I/II	12.5 (26 weeks)	1460 (24 weeks)	None	25	IUFD	Heart failure
Male	2012	20	Type I/II	9.8 (24 weeks)	Unknown	Transfusion because of anemia (25 weeks)	25	IUFD	Unknown
Female	2012	20	Type I/II	Unknown	Unknown	None	26	ENND	Unknown
Female	2013	21	Type I/II	9.0 (26 weeks)	486 (26 weeks)	Transfusion because of anemia (27 weeks)	27	ENND	Intratumor hemorrhage and fetal anemia
Female	2016	19	Type I/II	8.6 (26 weeks)	516 (26 weeks)	Transfusion because of anemia (26 weeks)	31	ENND	Unknown
Female	2018	24	Type I/II	Unknown	205 (24 weeks)	None	28	ENND	Unknown

Abbreviations: ENND, early neonatal death; GA, gestational age; SCT, sacrococcygeal teratoma; TOP, termination of pregnancy.

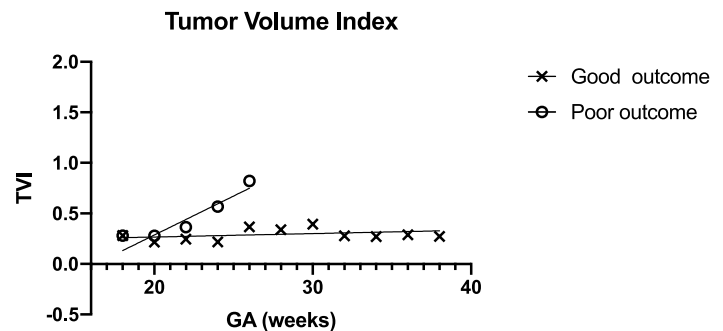
TABLE 3 Patient- and disease-related characteristics associated with poor outcome

	Poor outcome rate	Univariate		Multivariate	
		Odds ratio	p-Value	Odds ratio	p-Value
Altman classification					
I and II	8 of 42	-	0.176		
III and IV	0 of 13	1			
Morphology					
Cystic	5 of 28	1			
Solid	2 of 3	3.152 (0.560, 17.758)	0.176		
GA diagnosis (weeks)					
<24	9 of 46	2.311 (0.4871–11.40)	0.481		
≥24	2 of 21	1			
Cardiomegaly					
Yes	4 of 7	10.29 (1.9–55.8)	0.011*	7.0 (1.1–45.5)	0.039*
No	7 of 61	1		1	
Fetal hydrops					
Yes	3 of 4	21.00 (2.63–275.1)	0.012*	13.15 (1.0–166.7)	0.048*
No	8 of 64	1		1	
Polyhydramnios					
Yes	5 of 25	1.542 (0.4466–5.246)	0.5166		
No	6 of 43	1			
Highly vascularized tumor					
Yes	4 of 15	2.390 (0.6769–9.101)	0.2426		
No	7 of 53	1			

Note: * Indicates statistical significance.

Abbreviation: GA, gestational age.

FIGURE 5 Tumor volume index per gestational age for good and poor outcomes



Gestational age (weeks)	18	20	22	24	26	28	30	32	34	36	38
Good prognosis (n=)	1	17	24	20	22	31	26	27	19	18	9
Poor prognosis (n=)	2	5	6	6	5	0	0	0	0	0	0

3.5 | Tumor volume index

Tumor volume was measured throughout pregnancy in all patients included in the study. TVI of TOPs was excluded from TVI

analysis. Figure 5 compares the TVI between the good and poor outcome groups. TVI was compared between the two groups at multiple gestational ages. In fetuses with poor outcome, TVI increased more during pregnancy compared to TVI of the good

outcome group. TVI of the good outcome group remained around 0.3 during pregnancy.

4 | DISCUSSION

In this large cohort study, we found an incidence of fetuses prenatally diagnosed with SCT of one in 69,174 fetuses in the period 1998–2008 and one in 34,355 in 2009–2018. The overall mortality of fetuses with the prenatal diagnosis SCT in our study was 32.1% (27/84). After the exclusion of terminations of pregnancy, mortality was 13.1% (11/84). In the present study, cardiomegaly and fetal hydrops were significant risk factors for poor outcome. Both risk factors remained significant in multivariate analysis. Altman classification, polyhydramnios, highly vascularized tumor, morphology, and GA at diagnosis had no association with poor outcome. TVI increased more during pregnancy in the poor outcome group, compared to the good outcome group.

Others report a higher incidence of SCT, ranging from 1; 10,700 to 1; 27,500 births.^{7,26–28} The incidence of SCT that was found is probably higher as SCT may be missed on prenatal ultrasound, mainly because some diagnoses may be overlooked, particularly in type IV SCT cases. Prevalence may be higher, owing to the fact that a few women decline ultrasound examination and the screening policy changed during the study. Before 2007, there was no routine ultrasound in the Netherlands and referrals were based on occasional findings. Since 2007 a routine 20-week scan is offered with an uptake of about 98%.²⁹ Alternatively, the tumor may be less frequent in our population.

The mortality of fetuses prenatally diagnosed with SCT excluding TOP varies in different studies from 16% to 46%.^{9,20} The relatively low mortality rate (16.2%) in our study may be influenced by advances made in maternal and fetal management over the last 20 years.⁷ Fetal management options have improved and included intrauterine transfusion, interstitial laser coagulation, SCT cyst puncture, and amnioreduction in our study group. This may have prevented fetal death in some and has facilitated delivery in others. However, there were no strict criteria for fetal therapy.

Moreover, the effect of selection bias in some institutions could affect mortality rates, as some studies were conducted in highly specialized fetal medicine and surgery centers.^{16,21,22} Last, more parents could have chosen TOP because of expected unfavorable outcome; however, these fetuses were not included in analyses because it was not clearly stated in the medical record.

Risk factors related to poor outcome in fetuses prenatally diagnosed with SCTs can be divided into tumor-related and patient-related factors.³⁰ Tumor size and tumor growth rate as well as tumor morphology (solid/cystic) may be risk factors correlated to poor outcome.^{8,14,21,22,31–36}

Cardiomegaly and fetal hydrops have also been reported as risk factors for poor fetal outcome.^{9,37} These risk factors frequently occur in succession because both are an indication for heart failure in the fetus.²⁰ Other studies also found cardiomegaly and fetal hydrops as independent risk factors for poor outcome.^{9,37}

In our study, Altman classification, polyhydramnios, and GA at diagnosis had no association with poor outcome, which confirms data from smaller studies.^{16,20,38} Tumor aspect was a risk factor in some studies^{8,16}; however, others found no correlation between tumor morphology and poor outcome. Also, the relationship between tumor size and outcome is not uniform.²⁰ This inconsistency may result from the unpredictable pattern of tumor growth with advancing gestation. To quantify tumor growth, several studies have tried to adjust it for fetal size by using fetal weight or head volume.^{16,21,38,39} Tumor volume-to-abdominal circumference ratio, as in the frequently used Hadcock formula, is less appropriate because of the variability of the abdominal circumference due to fetal hydrops or tumor size.^{20,40} Therefore, head circumference was used in the present study to adjust for fetal size. Unfortunately, statistical analysis could not be performed due to small numbers. Other studies found tumor volume-to-fetal weight ratio (TFR) and validated TFR >0.12 prior to 24 weeks GA as a significant predictor for poor outcome or found a TVI larger than 60 cm³/cm as a risk factor for poor outcome.^{16,21,38}

The association of cardiomegaly, fetal hydrops, and poor outcome found in the present cohort and in other studies raises the question if the proposed management options should be offered in these fetuses. Needle drainage of a cystic SCT is likely unwarranted, except prior to delivery to overcome difficulties during delivery due to the tumor volume, to either allow vaginal delivery or to allow cesarean with a normal hysterotomy as opposed to a classical incision. Baumgarten et al.⁴¹ advises open fetal surgery in fetuses with type I and II SCT with progressive evolution to high-output cardiac failure before a GA of 27 weeks. After 27 weeks' GA, iatrogenic preterm birth with immediate SCT resection should be considered.

Some limitations inherent to the retrospective design of the present study require mentioning. First, some patients were lost during follow-up or were followed in other hospitals than the Fetal Medicine Units or moved to a foreign country and could therefore not be included in the study. Furthermore, advances in imaging technology and neonatal care during the study period undoubtedly impacted some outcomes. This leads to an earlier and more accurate diagnosis of SCT which enables better prenatal care and treatment, and also to better care in the first days after birth reducing the risk of early death of the neonate.

Tumor volume was not documented in all fetuses. In most fetuses, tumor volume was not measured during each ultrasound. Therefore, exact statistical analyses could not be performed. Lastly, our data were based on a single measurement by an experienced perinatologist.

Further research with increased numbers and postnatal data is necessary to consider different counseling of parents in possible termination of pregnancy and determining which fetuses require fetal intervention and when early delivery is necessary. Furthermore, imaging should be performed at regular time points with equivalent intervals during pregnancy with special attention to tumor size, vascularization, growth, and tumor size compared to fetal size.

In conclusion, the current incidence of fetuses prenatally diagnosed with SCT in the Netherlands is approximately 1 in 35,000.

Poor outcome was observed in 16.2% of the fetuses. Fetal hydrops and cardiomegaly are both risk factors for poor outcome in fetuses prenatally diagnosed with SCT.

ACKNOWLEDGMENTS

The authors would like to thank dr. Ir. N. van Geloven for her help with the statistical analyses. The authors received no funding for this work.

CONFLICT OF INTEREST

The authors declare no conflict of interest.

DATA AVAILABILITY STATEMENT

The data that support the findings of this study are available on request from the corresponding author. The data are not publicly available due to privacy or ethical restrictions.

ORCID

Lieke J. van Heurn  <https://orcid.org/0000-0003-3877-1698>

REFERENCES

- Derikx JP, De Backer A, van de Schoot L, et al. Long-term functional sequelae of sacrococcygeal teratoma: a national study in the Netherlands. *J Pediatr Surg.* 2007;42(6):1122-1126.
- Rescorla FJ, Sawin RS, Coran AG, Dillon PW, Azizkhan RG. Long-term outcome for infants and children with sacrococcygeal teratoma: a report from the Childrens Cancer Group. *J Pediatr Surg.* 1998;33(2):171-176.
- Huddart SN, Mann JR, Robinson K, et al. Sacrococcygeal teratomas: the UK Children's Cancer Study Group's experience. I. Neonatal. *Pediatr Surg Int.* 2003;19(1-2):47-51.
- Gabra HO, Jesudason EC, McDowell HP, Pizer BL, Losty PD. Sacrococcygeal teratoma -- a 25-year experience in a UK regional center. *J Pediatr Surg.* 2006;41(9):1513-1516.
- Kremer ME, Wellens LM, Derikx JP, et al. Hemorrhage is the most common cause of neonatal mortality in patients with sacrococcygeal teratoma. *J Pediatr Surg.* 2016;51(11):1826-1829.
- De Backer T, Sandler A. Study of the factors associated with recurrence in children with sacrococcygeal teratoma - discussion. *J Pediatr Surg.* 2006;41(1):181.
- Swamy R, Embleton N, Hale J. Sacrococcygeal teratoma over two decades: birth prevalence, prenatal diagnosis and clinical outcomes. *Prenat Diagn.* 2008;28(11):1048-1051.
- Usui N, Kitano Y, Sago H, et al. Outcomes of prenatally diagnosed sacrococcygeal teratomas: the results of a Japanese nationwide survey. *J Pediatr Surg.* 2012;47(3):441-447.
- Hedrick HL, Flake AW, Crombleholme TM, et al. Sacrococcygeal teratoma: prenatal assessment, fetal intervention, and outcome. *J Pediatr Surg.* 2004;39(3):430-438. discussion-8.
- Murphy JJ, Blair GK, Fraser GC. Coagulopathy associated with large sacrococcygeal teratomas. *J Pediatr Surg.* 1992;27(10):1308-1310.
- Sy ED, Lee H, Ball R, et al. Spontaneous rupture of fetal sacrococcygeal teratoma. *Fetal Diagn Ther.* 2006;21(5):424-427.
- Flake AW, Harrison MR, Adzick NS, Laberge JM, Warsof SL. Fetal sacrococcygeal teratoma. *J Pediatr Surg.* 1986;21(7):563-566.
- Kaneyama K, Yamataka A, Kobayashi H, et al. Giant, highly vascular sacrococcygeal teratoma: report of its excision using the LigaSure vessel sealing system. *J Pediatr Surg.* 2004;39(12):1791-1793.
- Benachi A, Durin L, Vasseur Maurer S, et al. Prenatally diagnosed sacrococcygeal teratoma: a prognostic classification. *J Pediatr Surg.* 2006;41(9):1517-1521.
- Bond SJ, Harrison MR, Schmidt KG, et al. Death due to high-output cardiac failure in fetal sacrococcygeal teratoma. *J Pediatr Surg.* 1990;25(12):1287-1291.
- Akinkuotu AC, Coleman A, Shue E, et al. Predictors of poor prognosis in prenatally diagnosed sacrococcygeal teratoma: a multi-institutional review. *J Pediatr Surg.* 2015;50(5):771-774.
- Coleman A, Shaaban A, Keswani S, Lim FY. Sacrococcygeal teratoma growth rate predicts adverse outcomes. *J Pediatr Surg.* 2014;49(6):985-989.
- Westerburg B, Feldstein VA, Sandberg PL, Lopoo JB, Harrison MR, Albanese CT. Sonographic prognostic factors in fetuses with sacrococcygeal teratoma. *J Pediatr Surg.* 2000;35(2):322-326.
- Holterman AX, Filiatrault D, Lallier M, Youssef S. The natural history of sacrococcygeal teratomas diagnosed through routine obstetric sonogram: a single institution experience. *J Pediatr Surg.* 1998;33(6):899-903.
- Lee SM, Suh DH, Kim SY, et al. Antenatal prediction of neonatal survival in sacrococcygeal teratoma. *J Ultrasound Med.* 2018;37(8):2003-2009.
- Shue E, Bolouri M, Jelin EB, et al. Tumor metrics and morphology predict poor prognosis in prenatally diagnosed sacrococcygeal teratoma: a 25-year experience at a single institution. *J Pediatr Surg.* 2013;48(6):1225-1231.
- Rodriguez MA, Cass DL, Lazar DA, et al. Tumor volume to fetal weight ratio as an early prognostic classification for fetal sacrococcygeal teratoma. *J Pediatr Surg.* 2011;46(6):1182-1185.
- Centraal Bureau voor de Statistiek. *Geboorte; kerncijfers.* 2019. <https://opendata.cbs.nl/statline/#/CBS/nl/dataset/37422ned/table?fromstatweb>. Accessed January 14, 2020.
- Nederlandse Vereniging voor Obstetrie en Gynaecologie Richtlijn. *Begeleiding bij foetale sterfte en doodgeboorte.* 2014. <https://www.nvog.nl/wp-content/uploads/2018/02/Begeleiding-bij-foetale-sterfte-en-doodgeboorte-1.0-22-05-2014.pdf>. Accessed February 2, 2020.
- Altman RP, Randolph JG, Lilly JR. Sacrococcygeal teratoma: American Academy of Pediatrics Surgical Section Survey-1973. *J Pediatr Surg.* 1974;9(3):389-398.
- Forrester MB, Merz RD. Descriptive epidemiology of teratoma in infants, Hawaii, 1986-2001. *Paediatr Perinat Epidemiol.* 2006;20(1):54-58.
- Hambraeus M, Arnbjornsson E, Borjesson A, Salvesen K, Hagander L. Sacrococcygeal teratoma: a population-based study of incidence and prenatal prognostic factors. *J Pediatr Surg.* 2016;51(3):481-485.
- Pauniaho SL, Heikinheimo O, Vettenranta K, et al. High prevalence of sacrococcygeal teratoma in Finland - a nationwide population-based study. *Acta Paediatr.* 1992;102(6):e251-6.
- Rijkstinstituut voor Volksgezondheid en Milieu. Milieu RvVe. Informatie over de organisatie van het programma prenatale screening op down-, edwards- en patau syndroom en het structureel echoscopisch onderzoek. <https://www.pns.nl/down-edwards-patau-enseo/professionals/organisatie>. Accessed January 14, 2020.
- Fumino S, Tajiri T, Usui N, et al. Japanese Clinical Practice Guidelines for Sacrococcygeal teratoma. *Pediatr Int official J Jpn Pediatr Soc.* 2017.
- Brace V, Grant SR, Brackley KJ, Kilby MD, Whittle MJ. Prenatal diagnosis and outcome in sacrococcygeal teratomas: a review of cases between 1992 and 1998. *Prenat Diagn.* 2000;20(1):51-55.
- Wilson RD, Hedrick H, Flake AW, et al. Sacrococcygeal teratomas: prenatal surveillance, growth and pregnancy outcome. *Fetal Diagn Ther.* 2009;25(1):15-20.
- Perrelli L, D'Urzo C, Manzoni C, et al. Sacrococcygeal teratoma. Outcome and management. An analysis of 17 cases. *J Perinat Med.* 2002;30(2):179-184.
- Yoneda A, Usui N, Taguchi T, et al. Impact of the histological type on the prognosis of patients with prenatally diagnosed sacrococcygeal

- teratomas: the results of a nationwide Japanese survey. *Pediatr Surg Int.* 2013;29(11):1119-1125.
35. De Backer A, Madern GC, Hakvoort-Cammel FG, Haentjens P, Oosterhuis JW, Hazebroek FW. Study of the factors associated with recurrence in children with sacrococcygeal teratoma. *J Pediatr Surg.* 2006;41(1):173-181. discussion-81.
 36. Addeo R, Crisci S, D'Angelo V, et al. Bax mutation and over-expression inversely correlate with immature phenotype and prognosis of childhood germ cell tumors. *Oncol Rep.* 2007;17(5): 1155-1161.
 37. Okada T, Sasaki F, Cho K, et al. Management and outcome in prenatally diagnosed sacrococcygeal teratomas. *Pediatr Int.* 2008;50(4): 576-580.
 38. Gebb JS, Khalek N, Qamar H, et al. High tumor volume to fetal weight ratio is associated with worse fetal outcomes and increased maternal risk in fetuses with sacrococcygeal teratoma. *Fetal Diagn Ther.* 2019;45(2):94-101.
 39. Sy ED, Filly RA, Cheong ML, et al. Prognostic role of tumor-head volume ratio in fetal sacrococcygeal teratoma. *Fetal Diagn Ther.* 2009;26(2):75-80.
 40. Beutler GM, Kurmanavicius J, Hoffmann M, Welzl E, Huch R, Bajka M. New nomogram for foetal weight estimation based on Hadlock's two-parameter formula. *Ultraschall Med.* 2004;25(1):58-64.
 41. Baumgarten HD, Gebb JS, Khalek N, et al. Preemptive delivery and immediate resection for fetuses with high-risk Sacrococcygeal teratomas. *Fetal Diagn Ther.* 2019;45(3):137-144.

How to cite this article: van Heurn LJ, Coumans ABC, Derikx JPM, et al. Factors associated with poor outcome in fetuses prenatally diagnosed with sacrococcygeal teratoma. *Prenat Diagn.* 2021;41(11):1430-1438. doi:10.1002/pd.6026