

University of Groningen

Constraints on the [C II] luminosity of a proto-globular cluster at $z \sim 6$ obtained with ALMA

Calura, Francesco; Vanzella, Eros; Carniani, Stefano; Gilli, Roberto; Rosati, Piero; Meneghetti, Massimo; Paladino, Rosita; Decarli, Roberto; Brusa, Marcella; Lupi, Alessandro

Published in:
Monthly Notices of the Royal Astronomical Society

DOI:
[10.1093/mnras/staa3185](https://doi.org/10.1093/mnras/staa3185)

IMPORTANT NOTE: You are advised to consult the publisher's version (publisher's PDF) if you wish to cite from it. Please check the document version below.

Document Version
Publisher's PDF, also known as Version of record

Publication date:
2021

[Link to publication in University of Groningen/UMCG research database](#)

Citation for published version (APA):

Calura, F., Vanzella, E., Carniani, S., Gilli, R., Rosati, P., Meneghetti, M., Paladino, R., Decarli, R., Brusa, M., Lupi, A., D'Amato, Q., Bergamini, P., & Caminha, G. B. (2021). Constraints on the [C II] luminosity of a proto-globular cluster at $z \sim 6$ obtained with ALMA. *Monthly Notices of the Royal Astronomical Society*, 500, 3083-3094. <https://doi.org/10.1093/mnras/staa3185>

Copyright

Other than for strictly personal use, it is not permitted to download or to forward/distribute the text or part of it without the consent of the author(s) and/or copyright holder(s), unless the work is under an open content license (like Creative Commons).

The publication may also be distributed here under the terms of Article 25fa of the Dutch Copyright Act, indicated by the "Taverne" license. More information can be found on the University of Groningen website: <https://www.rug.nl/library/open-access/self-archiving-pure/taverne-amendment>.

Take-down policy

If you believe that this document breaches copyright please contact us providing details, and we will remove access to the work immediately and investigate your claim.

Downloaded from the University of Groningen/UMCG research database (Pure): <http://www.rug.nl/research/portal>. For technical reasons the number of authors shown on this cover page is limited to 10 maximum.

Constraints on the [C II] luminosity of a proto-globular cluster at $z \sim 6$ obtained with ALMA

Francesco Calura¹,^{1*} Eros Vanzella,¹ Stefano Carniani²,² Roberto Gilli,¹ Piero Rosati,^{3,1} Massimo Meneghetti,¹ Rosita Paladino,⁴ Roberto Decarli⁵,¹ Marcella Brusa,^{5,1} Alessandro Lupi⁶,² Quirino D’Amato,^{4,5} Pietro Bergamini¹ and Gabriel B. Caminha⁶

¹INAF-Osservatorio di Astrofisica e Scienza dello Spazio, via Gobetti 93/3, I-40129 Bologna, Italy

²Scuola Normale Superiore, Piazza dei Cavalieri 7, I-56126 Pisa, Italy

³Dipartimento di Fisica e Scienze della Terra, Università degli Studi di Ferrara, via Saragat 1, I-44122 Ferrara, Italy

⁴INAF - Istituto di Radioastronomia, via Piero Gobetti 101, I-40129 Bologna, Italy

⁵Dipartimento di Fisica e Astronomia dell’Università degli Studi di Bologna, via P. Gobetti 93/2, I-40129 Bologna, Italy

⁶Kapteyn Astronomical Institute, University of Groningen, Postbus 800, NL-9700 AV Groningen, the Netherlands

Accepted 2020 October 7. Received 2020 October 7; in original form 2020 August 10

ABSTRACT

We report on ALMA observations of D1, a system at $z \sim 6.15$ with stellar mass $M_* \sim 10^7 M_\odot$ containing globular cluster (GC) precursors, strongly magnified by the galaxy cluster MACS J0416.1-2403. Since the discovery of GC progenitors at high redshift, ours is the first attempt to probe directly the physical properties of their neutral gas through infrared observations. A careful analysis of our data set, performed with a suitable procedure designed to identify faint narrow lines and which can test various possible values for the unknown linewidth value, allowed us to identify a 4σ tentative detection of [C II] emission with intrinsic luminosity $L_{[\text{C II}]} = (2.9 \pm 1.4) 10^6 L_\odot$, one of the lowest values ever detected at high redshift. This study offers a first insight on previously uncharted regions of the $L_{[\text{C II}]} - \text{SFR}$ relation. Despite large uncertainties affecting our measure of the star formation rate, if taken at face value our estimate lies more than ~ 1 dex below the values observed in local and high redshift systems. Our weak detection indicates a deficiency of [C II] emission, possibly ascribed to various explanations, such as a low-density gas and/or a strong radiation field caused by intense stellar feedback, and a low metal content. From the non-detection in the continuum, we derive constraints on the dust mass, with 3σ upper limit values as low as \sim a few $10^4 M_\odot$, consistent with the values measured in local metal-poor galaxies.

Key words: gravitational lensing; strong – galaxies; high-redshift – galaxies; ISM – submillimetre; ISM.

1 INTRODUCTION

Observational studies of galaxies at very high redshift are crucial to understand how these systems originated and what were the first, fundamental steps of their evolution. In the last decade, the Atacama Large Millimetre/submillimetre Array (ALMA) enabled a series of ground-breaking studies which revolutionized the field of galaxy formation, mostly through the detection of strong far-infrared (FIR) lines in star-forming galaxies in the early Universe. In particular, the investigation of the strongest FIR atomic fine-structure lines, such as the [C II] line at $158 \mu\text{m}$ and the [O III] line at $88 \mu\text{m}$, generally allows one to probe the properties of the interstellar medium (ISM) in galaxies (e.g. Maiolino et al. 2015; Inoue et al. 2016; Carniani et al. 2017; Laporte et al. 2017; Matthee et al. 2017; Carniani et al. 2018a; Hashimoto et al. 2018; Bethermin et al. 2020; Harikane et al. 2020; Schaerer et al. 2020). The [C II] line, predominantly originating in photo-dominated regions of actively star-forming galaxies, in principle, may be useful to trace star-forming gas, although with a dependence on metallicity and porosity of the ISM (De Looze

et al. 2014). This line is generally used to probe the physical conditions of the ISM in galaxies at $z > 4.5$, i.e. in an epoch which marks the transition from cosmic reionization, which presumably was completed at $z \sim 6$, to the appearance of dust- and metal-rich galaxies, already observed at comparable redshifts (e.g. Nagao et al. 2012; Marrone et al. 2018).

Most infrared/submillimetre observations carried on so far in high redshift objects were performed by pointing instruments on bright sources, i.e. in actively star-forming galaxies such as Lyman- α ($\text{Ly}\alpha$) emitters, in quasar/AGN host galaxies and submillimetre-detected starbursts (Venemans et al. 2012; Riechers et al. 2013; Wang et al. 2013; Willott, Omont & Bergeron 2013; Decarli et al. 2018; for a review, see Hodge & da Cunha 2020) and fewer detections in normally star-forming galaxies, in some cases selected with the Lyman Break technique (Willott et al. 2015; Bakx et al. 2020). So far, very little attention has been devoted to the search for [C II] emission in particularly faint systems, for obvious technical reasons. However, the study of [C II] emission in faint objects, which presumably are associated to low-surface brightness objects such as extended star-forming complexes of dwarf galaxies is particularly interesting, as in the domain of these systems the [C II]-star formation rate (SFR) relation found in local galaxies seems to break (e.g. De Looze

* E-mail: francesco.calura@inaf.it

et al. 2014). Moreover, the study of very faint systems towards the reionization epoch is of particular interest also because some of these objects have been proposed as important contributors to reionization itself, perhaps in the form of dwarf galaxies (e.g. Bouwens et al. 2012) or more isolated compact, massive star clusters (Ricotti 2002). In fact, in these systems the leak of ionizing photons is thought to be particularly favoured, owing to low HI column densities, or to extended, ionized cavities created by concentrations of massive stars (Vanzella et al. 2020a).

A natural help in observational studies of particularly faint objects is provided by strong gravitational lensing. In the last few years, much progress in this field has been driven by deep observations of massive galaxy clusters, carried out in the context of large *Hubble Space Telescope* programmes, in particular the Hubble Frontier Fields (HFF) survey (Lotz et al. 2017). Robust lens models of galaxy clusters are built thanks to the identification of large numbers of multiply lensed sources, which can span a large redshift range (Meneghetti et al. 2017; Bergamini et al. 2019). Thanks to strong-lensing effects produced by massive clusters of galaxies located along the line of sight, sources can be magnified by large factors (ranging from μ of the order of a few up to ~ 100), allowing faint, compact objects to be studied with very high spatial resolution and signal-to-noise ratios (SNR) (and suprequent recurrences) and in some cases, to probe their structural parameters down to scales of a few ~ 10 pc. In this context, the determination of the redshift of the images is a key problem. In many cases, photometric redshift estimates are accessible, but a safe determination of the redshift generally has to rely upon a spectroscopic detection, achievable only with deep observations. In this regard, in recent times considerable, further progress was possible thanks to the significant use of powerful instruments such as the Multi Unit Spectroscopic Explorer (MUSE, Bacon et al. 2015) mounted on the VLT, which has enabled the spectroscopic confirmation of hundreds of multiple images at high redshift ($z > 3$, e.g. Caminha et al. 2017; Lagattuta et al. 2019). This has enhanced the production of highly accurate lens models, significantly mitigating systematic uncertainties in the computation of magnification maps in lensed fields. This recent progress has allowed one to determine absolute physical quantities such as luminosities, sizes, stellar mass values and SFRs of new objects, which before were impossible to study in non-lensed fields.

One of the most important results achieved with Deep MUSE pointings in strongly lensed fields was the first discovery of the precursors of globular clusters (GC). Vanzella et al. (2017a) presented a detailed study of a few very faint systems detected behind two HFF clusters between $z \sim 3$ and 6.1, for which accurate measures of the radial surface brightness profiles, sizes, spectral energy distributions, stellar masses, and SFR values were obtained. The conclusion that some of these systems might qualify as GC precursors stems from the study of their stellar mass values (between 10^6 and $10^7 M_\odot$) and sizes (of the order of a few 10 pc, Bouwens et al. 2017; Vanzella et al. 2017a, b; Kikuchihara et al. 2020) with stellar surface density values compatible with the expectations of some GC formation scenarios (e.g. D’Ercole et al. 2008; Calura et al. 2019). The most striking example of a GC precursor was found as a component of an extended star-forming complex at $z = 6.1$, with a total stellar mass of $\sim 2 \times 10^7 M_\odot$ and which contains a compact, nucleated, very dense region at its centre (Vanzella et al. 2019). The nuclear component has a stellar mass of $\sim 10^6 M_\odot$, young stellar populations (< 10 Myr) and for its effective radius, an upper limit of 13 pc was derived. Other individual star-forming knots are present in a widely diffused star-forming complex at $z = 6.1$, with intrinsic UV magnitudes between 31 and 32 and sizes between 10 and 50 pc (Vanzella et al. 2019).

In this paper, we report on ALMA band six observations of the strongly magnified, central region of this star-forming complex, aimed at the detection of [C II] emission. To our knowledge, this study is one of the first in which such a faint object (with intrinsic UV magnitude $m = 29.6$, Vanzella et al. 2019) and at such a high redshift has ever been targeted with ALMA (see also Knudsen et al. 2016).

Our paper is organized as follows. In Section 2, we describe our target, our observations and the methods used for data reduction. In Section 3, we discuss our results and finally we present our conclusions in Section 4.

Throughout this paper, we adopt a Salpeter (1955) stellar initial mass function (IMF) and concordance cosmology with $\Omega_m = 0.3$, $\Omega_\Lambda = 0.7$, and $h = 0.7$. At the redshift of our source, this implies a scale of 5.63 kpc/arcsec and a luminosity distance $D_L = 5.94 \times 10^4$ Mpc (Wright 2006).

2 TARGET DESCRIPTION AND OBSERVATIONS

The target, shown in Fig. 1, was initially identified by Caminha et al. 2017 and subsequently analysed by Vanzella et al. (2017a, hereafter V17), where several compacts, strongly lensed objects at $z > 3$ were analysed. The target was first detected by means of a two hours MUSE integration, which revealed three multiple images of the same Ly α nebula. We centred our ALMA pointing on this system (Fig. 1, left-hand panel), a superdense star-forming region at $z = 6.1$ composed of two compact sub-systems, D1 and T1 (shown in the top-right inset of Fig. 1), detected by the *Hubble Space Telescope* (HST) in the WFC3/F105W and ACS/F814W bands. The system including D1 and T1 is part of an extended (~ 50 arcsec across) Ly α arc detected in the HFF galaxy cluster MACS J0416. As discussed in V17, in several cases the gravitational lens (in general a galaxy cluster) causes a significant stretching of the source, allowing one to probe very small sizes, sometimes of the order of a few 10 pc or less, and to spatially resolve substructures, such as multiple clusters in extended star-forming complexes. The subject of this work is one of the best-studied cases, in which separate stellar components are revealed from UV observations, and stellar masses, SFRs as well as half-light radii can be derived for several single sub-components.

The redshift computed from the Ly α line in deep MUSE observations is $z = 6.149 \pm 0.003$ (Vanzella et al. 2020b).

2.1 D1 and T1 as infant GCs

The D1-T1 system was analysed in detail in Vanzella et al. (2019, hereafter V19), where an accurate model of the gravitational lens was presented, able to reproduce with great precision the positions of several spectroscopically confirmed multiple images at $3 \leq z \leq 6.5$ (Caminha et al. 2017; Bergamini et al. 2020).

The UV emission is generated by extremely faint systems (with intrinsic magnitudes $m_{1500} = 28-33$), presenting stellar masses of a few $10^6 M_\odot$ and consistent with ages of 1–10 Myr (V17) obtained from the analysis of their spectral energy distribution (SED, see Section 2.2).

The sources are located in a region of high magnification ($\mu > 15$, see Fig. 1). The systems D1 and T1, separated by 1.7 arcsec, could be spatially resolved along the tangential direction (further details can be found in V17 and V19). From the light profiles observed in the F105W HST band (which probes the rest-frame 1500 Å) and by means of GALFIT modelling, it was possible to obtain an estimate of the size of T1, D1 and other star-forming knots in their proximity, with values spanning the interval $13 \leq R_e < 50$ pc (V19). In V19

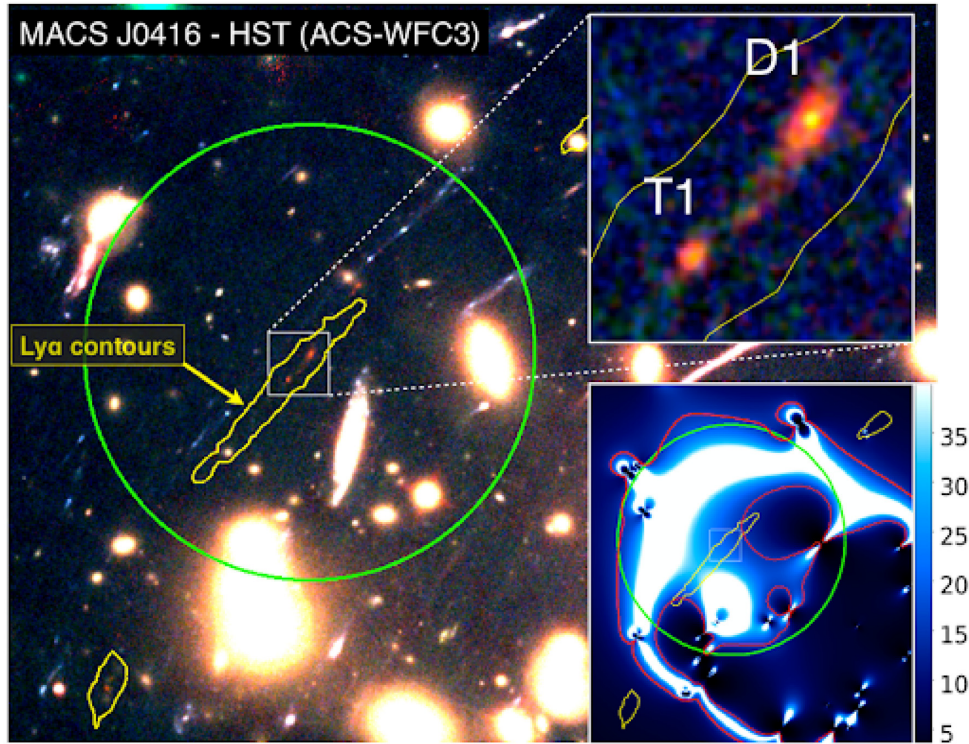


Figure 1. *HST* composite colour (red= $F105W$, green= $F814W$, and blue = $F606W$) 35×35 arcsec² image of the Lyman- α arc in the galaxy cluster MACS J0416 (traced by the yellow contours, plotted at 1σ) at $z = 6.145$ observed in our ALMA program. Our target contains two very compact star-forming systems, D1 and T1, plotted here with the 22 arcsec ALMA field of view (green circle). The 3×3 arcsec² inset in the top right-hand side shows a zoom-in of the region containing D1 and T1. Bottom-left inset: magnification map of the entire area. The red contour encloses a region with magnification $\mu = 15$.

the main features of the target of our ALMA observations were presented, summarized in Table 1.

With an intrinsic UV magnitude of 31.3, T1 is one of the faintest spectroscopically confirmed star-forming objects ever identified at such a high redshift. Overall, in available *HST* images, D1 appears considerably more extended than T1 and it is characterized by a nucleated star-forming region surrounded by a diffuse component. Despite the large magnification, the spatial distribution of the central emission appears circular and symmetric, which implies a small size of the innermost component. By means of SED-fitting techniques and considering a plausible value for the magnification factor, V19 estimated for D1 a total stellar mass of $\sim 2 \times 10^7 M_{\odot}$, an SFR of $16 M_{\odot} \text{ yr}^{-1}$ and an effective radius of 44 pc, whereas for its nucleated central component a stellar mass of $\sim 10^6 M_{\odot}$ and effective radius < 13 pc. Due to the peculiar features of these two objects, i.e. their extremely small physical sizes, absolute magnitudes $M_{UV} \geq -16$ and their stellar mass values, D1 and T1 can be regarded as two of the best cases for GC precursors ever discovered so far at high redshift, and among the densest star-forming objects ever found.

Overall, the target of our observation appears as a richly structured star-forming complex which includes a variety of compact sources, and for such features is a unique laboratory to study the physical properties of very dense star-forming objects. With the present observations, we targeted the central, most magnified image of the Ly α emitting region. In the remainder of the text, for brevity, we will refer to the D1-T1 system with ‘D1’, i.e. with the name of the system which dominates the star-forming complex in terms of UV luminosity.

The primary aim of our ALMA program was to detect via the [C II] emission line at $158 \mu\text{m}$ (rest frame) the possible presence

of cold gas in the systems. The one presented in this paper is the first observational study performed at submm wavelengths of such a rich and unique environment, representative of the one in which the oldest and most metal-poor GCs might have originated.

2.2 Derivation of the SFR and other physical properties of D1

Physical properties of D1 such as SFR, stellar mass, and age were derived by means of SED-fitting techniques and based on the Astrodeep photometry (Merlin et al. 2016). The age and SFR values estimated for D1 are reported in Table 1, along with their associated 1σ and 3σ uncertainties. More details on their derivation can be found in V17 and V19.

The fits were performed with a set of standard templates (Bruzual & Charlot 2003), which include also nebular continuum and emission lines (Castellano et al. 2016). Despite the extremely faint intrinsic magnitude of D1, the multiband photometry is robust thanks to long *HST* exposure times matched to strong-lensing magnification and an SNR > 20 was achieved in all the *HST*/WFC3 bands. In general, due to the lack of constraints at optical rest-frame wavelengths, the SED-fitting analysis shows degenerate solutions for stellar mass, age, and SFRs (V17). However, the Ly α flux measured from MUSE spectroscopy allows us to strengthen the constraints on both SFR and age. The rest-frame equivalent width (EW) of the Ly α line was computed by integrating the Ly α flux over different apertures that include D1 and a more extended region which embraces a large portion of the Ly α arc. In the most conservative case, assuming negligible dust contribution the resulting rest-frame EW is $60 \pm 8 \text{ \AA}$ which, if compared with the evolution of the same quantity

Table 1. Summary of the main physical properties of D1 as presented in V19. First column: redshift. Second column: total magnification. Third column: stellar mass. Fourth column: age of the system. Fifth column: SFR. Sixth column: apparent magnitude. Seventh column: absolute UV magnitude. Eighth column: effective radius.

z^a	μ	M_*^b (M_\odot)	Age ^c (Myr)	SFR ^{b, c, d} ($M_\odot \text{ yr}^{-1}$)	$m(1500 \text{ \AA})^b$	M_{UV}^b	R_c^b (pc)
$z = 6.149 \pm 0.003$	17.4 ± 6	$2.2_{-0.06}^{+1.1} \times 10^7$	$1.4_{-0.4}^{+1.6} \text{ (+98.6)}$ <small>(-0.4)</small>	$15.8_{-8.0}^{+17.8} \text{ (+61.8)}$ <small>(-15.4)</small>	29.6 ± 0.2	-17.1 ± 0.2	44 ± 19

^a Computed from the MUSE Ly α detection, using the air-based Ly α wavelength value of 1215.136 Å.

^b All quantities are intrinsic, i.e. corrected for magnification due to gravitational lensing.

^c For each measurement we report the 1σ (3σ) uncertainties.

^d The lower 3σ errorbar of the SFR is computed considering the available constraints from the Ly α detection, whereas the upper errorbar is computed at 3σ .

extracted from stellar population synthesis (Schaerer 2002) suggests an age of D1 younger than 100 Myr assuming constant SFR (and of ~ 5 Myr assuming instantaneous star formation).

As discussed in V19, the intrinsic SFR derived from the SED-fitting at 3σ , including the constraints from the Ly α emission, ranges between 0.4 and $\sim 78 M_\odot \text{ yr}^{-1}$, with $15.8 M_\odot \text{ yr}^{-1}$ as best value. The very blue ultraviolet spectral slope ($\beta_{\text{UV}} = -2.5 \pm 0.10$, where the UV flux is $F_\lambda \sim \lambda_{\text{UV}}^\beta$, V19) of D1 confirms its young age and suggests very little dust attenuation.

2.3 Observations and data reduction

In our program, ALMA observations of the central, strongly magnified central image of a giant Ly α nebula containing D1 were performed to detect the [C II] emission line and continuum emission. Our aim was to detect the ${}^2P_{3/2} - {}^2P_{1/2}$ [C II] transition at 157.74 μm (1900 GHz) rest-frame at a frequency of 266.05 GHz in the observer frame. The system was observed with ALMA in band 6 during Cycle 6 in the program 2018.1.00781.S. The observations consisted of 3 h of on-source integration, carried on with the C43-3 nominal configuration in December 2018 and April 2019 in three separate execution blocks. In the three blocks, the shortest baseline was of 15 m and the longest was between 483 and 649 m (with a nominal maximum angular resolution between 0.5 and 0.6 arcsec), with a maximum recoverable scale between 6 and 7 arcsec. Considering the magnification values obtained from the lens model for MACS J0416 at the coordinates of D1, a spatial full-width at half-maximum (FWHM) resolution of 0.5 arcsec is suitable for probing a delensed spatial extent of ~ 200 pc.

Four different spectral windows (SPWs) were chosen, one at central frequency 266 GHz and with a spectral resolution of 1129 kHz (corresponding to an $\sim 1 \text{ km s}^{-1}$ velocity resolution), and three at the lower frequency side of the [C II] line, at central frequency values 264, 251 and 249 GHz with 7.8-MHz resolution ($\sim 9 \text{ km s}^{-1}$), all used for continuum measures and calibration purposes. Given the peculiar nature of the source, the velocity width of the line was unknown a priori. In principle, a maximum SPWs resolution of 1 km s^{-1} , of the order of the velocity dispersion of star clusters, was chosen in order to identify the line also in case it was particularly narrow.

The data set has been calibrated by using standard scripts for ALMA data reduction and in particular with the CASA software (version: 5.4.0-70; see McMullin et al. 2007).

No continuum subtraction was detected in the field of view, therefore no continuum subtraction has been performed on the data set.

Line emission and continuum maps from the four SPWs were obtained by means of the CASA *clean* task and adopting a natural weighting.

The continuum image and line datacube have an angular resolution of $1.03 \times 0.63 \text{ arcsec}^2$ (PA¹ = -86°) and $0.99 \times 0.60 \text{ arcsec}^2$ (PA = -85°), respectively.

A summary of the main results of the observational program obtained after the reduction procedure are reported in Table 2.

3 RESULTS

Although this is not the first attempt to study [C II] emission in a lensed field (see, e.g. Schaerer et al. 2015; Bradač et al. 2017; Dessauges-Zavadsky et al. 2017; González-López et al. 2017), it is one of the very first to pursue such a task in a system as faint as D1. A thorough investigation of the ALMA data cube performed by means of an automatic procedure led us to identify a tentative $\sim 4\sigma$ detection in the [C II] maps, which will be detailed below. This led us to obtain an estimate of the [C II] luminosity of D1. We will use the SFR derived in V19 and we will study D1 in the $L_{[\text{C II}]}$ -SFR relation, a useful probe of the properties of the ISM in star-forming galaxies.

3.1 A tentative [C II] detection

The raw data collected in the SPW at central frequency 266.054 GHz were carefully analysed with a method targeted to identify weak, narrow emission lines in ALMA datacubes.

An automatic method was used to perform a blind search with a $5 \times 5 \text{ arcsec}^2$ aperture, which was placed at the centre of the field of view and through the entire SPW. An automatic search throughout the entire ALMA cube was performed, aiming for a feature at various spatial positions and spanning several possible values for the linewidth Δv , which is unknown for an object like the one discussed in this paper.

Detailed predictions regarding the features of atomic lines such as [C II] do exist as derived from hydrodynamical, zoom-in simulations in a cosmological context of large galaxies (Pallottini et al. 2017) or dwarfs (Lupi & Bovino 2020), but no estimate is available at the scale of a system with stellar mass of the order of $10^7 M_\odot$. As an initial guess, it is perhaps reasonable to assume a linewidth of the order of the velocity dispersion σ_v of local stellar systems of comparable stellar mass, i.e. of $M_* \sim 10^7 M_\odot$ dwarf galaxies, which typically show values for σ_v of the order of a few ten km s^{-1} (e.g. Walker et al. 2007; Cody et al. 2009). Based on these arguments, for the linewidth value, the range between $\Delta v \sim 10$ and $\sim 200 \text{ km s}^{-1}$ was explored.

After a careful inspection of the identifications, a tentative [C II] detection was found, illustrated by Fig. 2. The left-hand panel of Fig. 2 shows a coloured $12 \times 12 \text{ arcsec}^2$ [C II] map, where the black

¹Position angle (North through East).

Table 2. Summary of the physical properties of D1 derived in the present study from our ALMA observations. (1): observed frequency of the line. (2): redshift calculated from the [C II] detection. (3): line sensitivity. (4): continuum sensitivity. (5): linewidth (FWHM). (6): continuum flux limit at 3σ . (7): [C II] peak flux density with error. (8): [C II] line-integrated density flux with error. (9): [C II] luminosity of D1 with error. (10): upper limit on the dust mass of D1 assuming dust properties as in Ouchi et al. (2013). (11): upper limit on the dust mass of D1 in the case of I Zw18-like dust.

(1)	(2)	(3)	(4)	(5)	(6)	(7)	(8)	(9)	(10)	(11)
ν_{obs} (GHz)	$z_{[\text{C II}]}$	σ_{line}^a ($\mu\text{ Jy beam}^{-1}$)	σ_{cont} ($\mu\text{ Jy beam}^{-1}$)	FWHM (km s^{-1})	S_{cont} ($\mu\text{ Jy}$)	$S_{[\text{C II}]}^{\text{peak}}$ ($\mu\text{ Jy}$)	$S_{[\text{C II}]} \Delta v^b$ (Jy km s^{-1})	$L_{[\text{C II}]}^{b,c}$ ($10^6 L_{\odot}$)	$M_{\text{dust}}^{c,d}$ ($10^5 M_{\odot}$)	$M_{\text{dust}}^{I\text{Zw18 } c,e}$ ($10^5 M_{\odot}$)
265.83 ± 0.02	6.1495 ± 0.0006	106	9.6	110 ± 50	<28	446 ± 106	0.05 ± 0.02	2.9 ± 1.4	<3.2	<0.43

^a Estimated in a spectral channel of 110 km s^{-1} .

^b The integrated flux density and luminosity are estimated from a circular aperture of radius 1 arcsec. We compute the flux uncertainties rescaling the noise by $\sim\sqrt{N} = 2$, namely the square root of the number of independent beams in the circular region.

^c All quantities are intrinsic, i.e. corrected for magnification due to gravitational lensing, and assuming $\mu = 17.4$.

^d Computed assuming a spectral index value $\beta = 1.5$ and dust temperature $T = 40\text{ K}$ (Ouchi et al. 2013).

^e Computed assuming a spectral index value $\beta = 2.0$ and dust temperature $T = 70\text{ K}$ (Hunt et al. 2014).

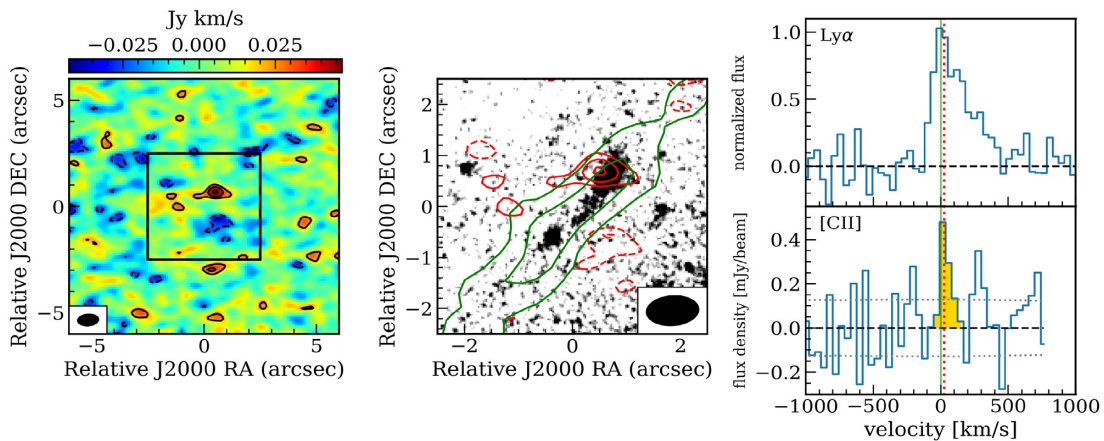


Figure 2. This figure illustrates the main features of the tentative [C II] detection discussed in Section 3.1. The left-hand panel shows a $12 \times 12\text{ arcsec}^2$ map of the [C II] emission, enclosed in the black square. The map was obtained by collapsing the datacube in frequency around the candidate line. The black solid contours show the 2σ , 3σ , and 4σ levels, where $\sigma = 0.011\text{ Jy km s}^{-1}$. The ALMA beam is indicated in the bottom left-hand inset of this panel. In the middle panel, the background black-and-white image shows an *HST* map of a $5 \times 5\text{ arcsec}^2$ region containing D1 and T1, whereas the red and green solid contours show the [C II] and the $\text{Ly}\alpha$ emission, respectively. In the right-hand panel, the top figure shows the $\text{Ly}\alpha$ profile (V19), whereas the right figure shows the [C II] spectrum, as extracted from the brightest pixel of the [C II] map and computed with a spectral rebinning of 44 km s^{-1} . The thick, black-dashed horizontal line indicates the zero-flux level, whereas the grey dotted lines indicate the 1σ error. The red dashed lines mark the velocity offset of the [C II] with respect to the $\text{Ly}\alpha$ detection, whose position is indicated by the green solid line.

contours highlight the detection at $2\text{--}4\sigma$. In the middle panel, we show a black-and-white *HST* map where D1 is visible, reported with the tentative ALMA detection, represented by the solid red contours.

The emission peak has $S/N = 4.2$, and the spatial offset between the centre of the UV detection of D1 and [C II] is $\sim 0.15\text{--}0.2\text{ arcsec}$. Given the major-axis of the ALMA beam, the spatial offset lies within the astrometric uncertainty of $\sim 0.2\text{ arcsec}$.

By performing a Gaussian fitting on the [C II] spectra, we estimated the main properties of the emission line. The linewidth is $110 \pm 50\text{ km s}^{-1}$ and the velocity offset with respect to the $\text{Ly}\alpha$ is $+21 \pm 128\text{ km s}^{-1}$.

The integrated flux density of $0.05 \pm 0.02\text{ Jy km s}^{-1}$ has been estimated from a circular aperture of radius 1 arcsec and centred at the location of the emission peak of the [C II] map (see the left-hand panel of Fig. 2). The error on the integrated flux density has been rescaled by the square root of the number of beams contained within the aperture ($N = 4$).

A note is in order concerning the ALMA beam (reported in the bottom left-hand inset of the first panel), which is strongly tilted with respect to the detected UV emission and it has an orientation very

similar to the tentative ALMA detection. The shape and orientation of the beam could severely limit the possibility of having a clearer detection if an extended emission was present and inclined with respect to the major axis of the ALMA beam, e.g. parallel to the axis of the UV emission of D1.

The feature visible in Fig. 2 and associated to the tentative detection was the only one found by means of this method with such a high statistical significance. Other few weak hints of a detection are present within 2.5 arcsec from the centre of D1, obtained with different spectral binning, which remain marginal as they generally present $S/N \leq 3$. It is worth stressing that a $S/N = 4.2$ does not fully prove this to be a real detection and not a strong noise fluctuation. Two concrete reasons for regarding this feature as a tentative detection are its position and velocity values, consistent with the estimates suggested by other measures at different wavelengths. We attempted to taper the image to probe more extended emitting regions. The tapering is generally recommended for weak, extended sources and sensitive to the geometry of the source (Carniani et al. 2020), therefore we performed a few attempts testing a range of possible shapes for the emitting region, but without obtaining any substantial SNR improvement.

The spectrum extracted by the brightest pixel is shown in the right-hand panel of Fig. 2 (see its caption for further details), which yields a systemic redshift value $z = 6.145$.

The robustness of our detection is further investigated in Appendix A, where the effects of the geometrical distribution of the emitting region on the estimated S/N are evaluated.

3.2 The [C II] luminosity of D1

The [C II]158- μm fine-structure line is a very efficient and dominating coolant for neutral gas, originating mostly in photo-dominated regions and arising from the transition of singly ionized carbon atoms (C+) from the $^2P_{3/2}$ to the $^2P_{1/2}$ state, and among the strongest emission line in the FIR. A significant fraction of gaseous carbon is expected to be in the form of C + under a wide range of physical conditions, including ionized, atomic, and molecular phases of the ISM (Goldsmith et al. 2012). For a reasonable range of gas temperature values (between 10^3 and 10^4 K), this transition occurs in a gas with a critical density of the order of $\sim 10^3 \text{ cm}^{-3}$ (Goldsmith et al. 2012). Hence, the fact that [C II] emission is able to trace cold, neutral gas is reasonably well ascertained in the literature. The main question is whether [C II] emission traces cold star-forming gas or not. To address this fundamental issue, several studies have been dedicated to the relation between $L_{[\text{C II}]}$ and SFR in local and distant galaxies. In Fig. 3, we show the $L_{[\text{C II}]}$ -SFR as determined in both local and distant galaxies by various authors, along with the [C II] luminosity derived in the present study with ALMA for D1.

The [C II] luminosity of D1, expressed in solar luminosities L_{\odot} , has been computed from the flux density value $S_{[\text{C II}]}^{\text{peak}}$ reported in Table 2 by means of the following formula:

$$L_{[\text{C II}],\text{D1}} = 1.04 \times 10^{-3} \times (S_{[\text{C II}]} \Delta \nu) D_L^2 \nu_{\text{obs}} L_{\odot}, \quad (1)$$

(Carilli & Walter 2013). The quantity D_L is the luminosity distance expressed in Mpc, whereas $\nu_{\text{obs}} = 266 \text{ GHz}$ is the rest frequency of the line.

The [C II] luminosity is $L_{[\text{C II}],\text{D1}} = (2.9 \pm 1.4) 10^6 L_{\odot}$, corrected for lensing and shown by the blue solid circle in Fig. 3. In Fig. 3, our value is compared to a collection of other estimates from the literature as obtained in both local and high- z galaxies. Despite the large uncertainty on the SFR value, our estimate occupies a region of the plot where extremely few previous measures are present, in particular regarding high-redshift systems. A discussion on the comparison of our estimate with previous measures of $L_{[\text{C II}]}$ from the literature is postponed to Section 3.3.

3.3 Discussion

Observationally, [C II] emission is detected primarily in star-forming galaxies, however, its reliability as an SFR tracer, as well as the existence of a unique relation between SFR and $L_{[\text{C II}]}$ and its evolution are still largely debated issues. In the remainder of this section, we extend the comparison of our results on the [C II] luminosity of D1 with previous estimates, we discuss the implications of our results in the context of studies of young star clusters at both low and high redshift, and finally we discuss further constraints on the dust content of D1 from the non-detection of the continuum.

3.3.1 On the $L_{[\text{C II}]}$ -SFR relation at high- z

In the Herschel Dwarf Galaxy Survey, De Looze et al. (2014) observed a sample of spatially resolved low-metallicity dwarf galaxies

in the local Universe. Their study showed a tight (with an ~ 0.3 – 0.4 dex 1σ dispersion) relation between $L_{[\text{C II}]}$ and SFR and in a variety of physical conditions, which extends to a broad sample of galaxies of various types and metallicities from the literature. The general result is that the [C II] emission line is to be regarded as a reliable SFR tracer in starbursts or in average star-forming galaxies. One of the conclusions of their analysis, relevant for the present study, was that the [C II] line is less of a reliable SFR tracer in galaxies of low metal abundance. A few local low-metallicity galaxies showed an offset in the $L_{[\text{C II}]}$ -SFR relation compared to more metal-rich galaxies. This was confirmed by a sensible increase of the scatter in the $L_{[\text{C II}]}$ -SFR relation towards low metallicities and as a function of other parameters such as warmer dust temperatures and increasing filling factors of diffuse, highly ionized gas. In these conditions, other cooling lines are more dominant with respect to [C II] (such as, e.g. [O I], De Looze et al. 2014).

Through the detection of [C II] emission in star-forming galaxies at high redshift, it was possible to achieve a deep characterization of the cold ISM of several galaxies at the end of reionization (Hodge & Da Cunha 2020, and references therein). The significant progress in studies of the $L_{[\text{C II}]}$ -SFR relation at high redshift, in great part driven by ALMA, concerned mostly bright systems.

Extended studies of this relation in high redshift galaxies were reported in various works, without reaching a clear consensus on whether the $L_{[\text{C II}]}$ -SFR relation is redshift-dependent or not. Some of these results reported on several cases of CII-underluminous galaxies with respect to the local $L_{[\text{C II}]}$ -SFR relation, sometimes indicating a larger scatter (Maiolino et al. 2015; Willott et al. 2015; Pentericci et al. 2016; Matthee et al. 2017, Carniani et al. 2018a), including also lensed systems (Bradač et al. 2017). Other subsequent studies, sometimes based on the re-analysis of extant data sets, found also in high-redshift systems (i.e. a $z \sim 6$ – 7) a $L_{[\text{C II}]}$ -SFR consistent with the local one (e.g. Matthee et al. 2019; Carniani et al. 2020), at least for the most luminous galaxies, whereas in faint systems deviations from the local relation were still found. Again, Harikane et al. (2020) found that at a given SFR, galaxies at $z > 5$ are weaker [C II]-emitters than local ones and that this deficit is dependent on their Ly- α EW, in that objects with large EW generally present low $L_{[\text{C II}]}$ /SFR ratios. The results of Harikane et al. (2020) span the interval $6 \lesssim \log(L_{[\text{C II}]}/\text{SFR} [L_{\odot} M_{\odot}^{-1} \text{ yr}]) \lesssim 7.5$. If we take at face value our estimates for $L_{[\text{C II}]}$ and SFR, we obtain for this ratio the extreme value of $\log(L_{[\text{C II}]}/\text{SFR}) = 5.26 L_{\odot} M_{\odot}^{-1} \text{ yr}$ which, with plausible values for the Lyman- α EW $> 120 \pm 8 \text{ \AA}$ (V19), confirms the observed anticorrelation between [C II] deficit and Ly α EW (see also Harikane et al. 2018; Schaerer et al. 2020).

More recently, within the ALPINE-ALMA survey, Schaerer et al. (2020) presented an analysis of the $L_{[\text{C II}]}$ -SFR relation in a sample of 118 star-forming galaxies at $z \sim 5$. Their analysis indicates a substantially good agreement between the properties of their sample and the $L_{[\text{C II}]}$ -SFR relation in galaxies from other compilations both at comparable or higher z and in the local Universe. Their study of a homogeneous sample spanning a cosmic interval of ~ 13 Gyr suggests no evolution, which points towards a universal $L_{[\text{C II}]}$ -SFR relation in normal star-forming galaxies (with $\text{SFR} \geq 1 M_{\odot} \text{ yr}^{-1}$), with a behaviour similar to that shown by the collection of data in Fig. 3.

In general, the $L_{[\text{C II}]}$ -SFR relation at high redshift is poorly known in the faintest $L_{[\text{C II}]}$ regime. In this context, the current study is of particular interest, as our investigation of the properties of [C II] emission allows us to access a practically unexplored region of the $L_{[\text{C II}]}$ -SFR plot. The sources that show the largest offset from the local relation are the two faint lensed galaxies of Knudsen et al. (2016, yellow diamonds) and the lowest SFR-upper limit from Laporte et al. (2019),

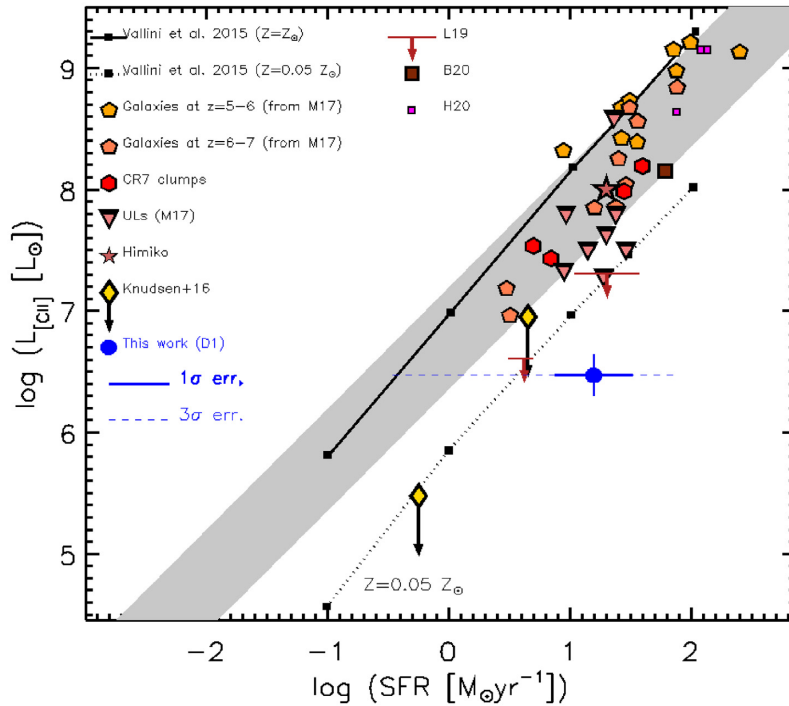


Figure 3. Observed relation between [C II] luminosity and SFR (in general determined from UV and FIR observations) in local and distant galaxies as obtained in the present study, compared with data from the literature. The tentative detection value presented in Section 3.1 is the blue solid circle, reported with the 1σ (blue thick solid line) and 3σ (blue thin dashed line) error bars. As for the data from other authors, where required the SFR values have been corrected for the IMF, which in the present work is the one of Salpeter (1955). The orange and dark yellow pentagons and the red hexagon are galaxies between $z = 6$ and 7 , between $z = 5$ and 6 and clumps of the CR7 object, respectively, all from Matthee et al. (2017). The light-red inverted triangles are upper limits from Matthee et al. (2017). The yellow diamonds are ALMA observations of lensed systems at $z > 6$ (Knudsen et al. 2016); in this case, the SFR values are the ones from UV-optical observations. The pale red star is the estimate for the Himiko galaxy by Carniani et al. (2018b). The dark red lines with downpointing arrows are upper limits measured in two systems at $z > 8$ by Laporte et al. (2019). The large brown square is the recent estimate derived by Bakx et al. (2020) in an LBG at $z = 8.3$. The small magenta squares are estimates for galaxies at $z > 6$ from Harikane et al. (2020). The grey area represents the local relation estimated by De Looze et al. (2014) computed for their entire galaxy sample, reported with its 1σ dispersion. The dotted and solid black lines are the model of Vallini et al. (2015) computed for a $Z = 0.05 Z_{\odot}$ and $Z = Z_{\odot}$ metallicity values, respectively.

although in a recent reanalysis of ALMA data, Carniani et al. (2020) report a tentative [C II] detection for some of these galaxies, possibly alleviating the discrepancy with the local $L_{[\text{C II}]}$ –SFR relation.

Of these star-forming galaxies at $z > 6$, one galaxy (A383-5.1) presents SFR and $L_{[\text{C II}]}$ values marginally compatible with the local relation (grey area in Fig. 3), whereas the lower point is for MS0451-H, a system with an extremely large magnification ($\mu = 100$), which lies ~ 1 dex lower than the local relation. Taking the SFR measure of D1 at face value, our detection reveals an even larger offset with respect to the local relation. However, a caveat is in order regarding large uncertainties on the measured SFR as derived from the SED fitting. At this redshift, key SFR indicators like the rest-frame optical Balmer lines (e.g. $H\alpha$) will be observable with the NIRSPEC instrument onboard the James Webb Space Telescope.

3.3.2 Theoretical interpretation of the weak [C II] emissivity of high- z galaxies

Previous theoretical studies have outlined that the [C II] emission originates from the cold (with temperatures of a few 100 K) neutral medium and from photo-dissociation regions (PDR, Vallini et al. 2013). This seems to suggest that its presence closely traces star formation sites, resulting in a linear relation, as found by De Looze et al. (2014) and Herrera-Camus et al. (2015). While at low-redshift

and close to solar metallicity such a relation is well established, as shown by several observations (De Looze et al. 2014; Herrera-Camus et al. 2018) and also numerical simulations (see, e.g. Lupi & Bovino 2020), significant deviations can arise in different ISM conditions, like at lower metallicity or in presence of a strong ionizations field, that are more typically found in the high-redshift Universe. To address the impact of such conditions, several studies have analysed the [C II] emission from typical high-redshift galaxies, by post-processing hydrodynamic zoom-in cosmological simulations with CLOUDY (Ferland et al. 2017; see, e.g. Olsen et al. 2017; Pallottini et al. 2017, 2019; Katz et al. 2019), or via ad-hoc methods, as in Arata et al. (2020), or also via on-the-fly non-equilibrium chemistry (Lupi et al. 2020). The main conclusion in all these studies is that a [C II] deficit exists at high redshift, most likely due to the starbursting nature of these galaxies rather than their metallicity, since most of these systems are close to solar (see, e.g. Vallini et al. 2015; Lupi & Bovino 2020). Other studies have evidenced a weak dependence of [C II] on metallicity. Harikane et al. (2020) showed that the $L_{[\text{C II}]}/\text{SFR}$ ratio does not show a strong dependence on metallicity, which to first approximation was interpreted as the result of the proportionality between C abundance and metallicity Z and an inverse proportionality between PDR column density and Z in a dust-dominated shielding regime (Kaufman, Wolfir & Hollenbach 2006). In this framework, if PDR give a large contribution to the [C II] emissivity, the [C II] luminosity is not expected to strongly depend on Z (see also Ferrara et al. 2019; Pallottini et al. 2019).

An additional effect upon which a consensus is still missing is the cosmic microwave background (CMB), hotter at $z \sim 6$, that alters the excitation level population of the C + atom and provides a background against which the signal is observed. While some studies concluded that such an effect can be important at high redshift (Da Cunha et al. 2013, Vallini et al. 2015), suppressing the emission from the intermediate- or low-density gas (i.e. with particle density values $n < 10 \text{ cm}^{-3}$), recent numerical simulations have shown that, because of the typically higher densities found in the $z \sim 6$ ISM, the actual effect of the CMB is mild (Lagache, Cousin & Chatzikos 2018; Kohandel et al. 2019; Arata et al. 2020; Lupi et al. 2020).

Taken at face value, our results further confirm the extremely weak emissivity of high-redshift systems, even though at present, theoretical attempts to model [C II] emission in objects with stellar masses as low as D1, or with a suitable resolution to identify individual star clusters, are still missing.

In the case of D1, the first, most intuitive reason for its low emissivity is the likely low metallicity of our system. However, a low [C II] emissivity can also be imputable to other reasons, including low gas density (Vallini et al. 2015) and a strong radiation field, in which production of C⁺⁺ would be enhanced (e.g. Knudsen et al. 2016; Lagache et al. 2018; Harikane et al. 2020). A further explanation is the saturation of the emitted [C II] flux in a region of high SFR density ($\Sigma_{\text{SFR}} = 25 \text{ M}_{\odot} \text{ kpc}^{-2} \text{ yr}^{-1}$) such as D1 (Ferrara et al. 2019).

As for the metal content of D1 in the form of dust grains, more constraints can be achieved from the analysis of its non-detection in the continuum.

3.3.3 Constraints on the dust content of D1 from the continuum flux

In principle, even if a single measurement of the continuum emission at $\sim 1 \text{ mm}$ wavelengths (observer frame) does not allow us to constrain the IR luminosity of a given system, under certain assumptions as discussed later, it can allow one to estimate the dust mass (Carilli & Walter 2013).

The possibility of constraining the dust content of a system like D1 is worthwhile, for at least two reasons. First, since dust grains are important sinks of heavy elements, a derivation of the dust mass allows us to derive constraints on the metallicity of our system. Second, the origin of dust in low-metallicity, low-mass galaxies is poorly known in general, and documented by a very limited amount of studies even in the local Universe (Fisher et al. 2014; Hunt et al. 2014, Lianou et al. 2019).

Several previous ALMA programs aimed at detecting the dust emission of various systems at high redshift by means of observations at $\sim 1 \text{ mm}$ rest-frame (e.g. Venemans et al. 2018). However, it was not uncommon that the dust continuum was not detected, especially at $z \sim 6$ (e.g. Aravena et al. 2016). When this occurs, the measured continuum sensitivity can usually be used to achieve bounds on the dust mass.

Also in the case of D1, no detection was found from the analysis of the continuum map, but a 3σ upper limit on its dust mass was derived from the sensitivity as described below.

The FIR continuum of star-forming systems is generally dominated by dust emission and its spectrum is assumed to follow a modified blackbody (e.g. Priddey & McMahon 2001; Bianchi 2013; Gilli et al. 2014). Assuming single temperature dust, in an optically thin regime an upper limit on the dust mass can be computed as

$$M_{\text{dust}} \leq \frac{D_L^2 S_{\nu}}{(1+z) k_{\nu}(\beta) B_{\nu}(T)} M_{\odot} / \text{beam}, \quad (2)$$

where $k_{\nu}(\beta) = 0.77(\nu/352 \text{ GHz})^{\beta} \text{ cm}^2 \text{ g}^{-1}$ is the dust mass opacity coefficient (Dunne et al. 2000) and $B_{\nu}(T)$ is the Planck function. In our case $S_{\nu} = 3 \sigma_{\text{cont}}$ and we assume that the system is point-like, i.e. $N_{\text{beam}} = 1$.

Two further assumptions need to be made on the spectral index β and on the dust temperature T . These quantities are poorly known in systems like D1, hence here we test two different possibilities. In one case, we regard the well-known Himiko system (Ouchi et al. 2013) as the prototype of a star-forming system at $z > 6$, and assume the same parameters adopted for this system to derive an upper limit on its dust mass, i.e. $\beta = 1.5$ and $T = 40 \text{ K}$. This choice is motivated by the fact that, despite Himiko appears as a vigorous star-forming system, it is also dust-poor and, for this reason, it can be regarded as an analogue of a metal-poor system, comparable to a few local blue compact dwarf galaxies (Fisher et al. 2014) and possibly like the subject of our study.

In the second case, we consider the recent study of Inoue et al. (2020), who developed an algorithm to solve the radiative-transfer equation and derived the temperature and mass of dust in high- z galaxies, assuming dust to be in radiative equilibrium and considering a set of different geometries. Assuming $\beta = 2$, Inoue et al. (2020) estimated dust temperatures between 38 and 70 K. A similar result has been also found by Sommovigo et al. (2020), who developed a model for dust temperature within giant molecular clouds (GMC). These authors found that, due to the smaller size and higher turbulent nature of GMC at high- z , the dust is warmer than in local ones and can reach temperature values as high as $T = 60 \text{ K}$.

It is worth noting that a type of dust with $\beta = 2$ and $T = 70 \text{ K}$ is similar to the result of Hunt et al. (2014) obtained in their single-temperature blackbody fits to the spectrum of I Zw18 as observed with ALMA (for this reason the values obtained in this case are labelled ‘I Zw18-like dust’ in Fig. 4).

The upper limits on the dust mass of D1 obtained as described in this section are reported in the M_{dust} –SFR relation shown in Fig. 4, compared with other estimates from the literature in local and distant galaxies. The compilation of data in local and distant (i.e. at $z \sim 2-3$) galaxies shown in Fig. 4 is taken from Fisher et al. (2014). Also an empirical relation derived in local galaxies (see also Da Cunha et al. 2010) is included, together with the upper limit obtained by Ouchi et al. (2013) in Himiko.

Other estimates of the dust mass in local low-metallicity dwarf galaxies (I Zw and SBS 0335-052) are reported (for further details see caption of Fig. 4). The M_{dust} –SFR relation observed in local metal-poor galaxies deviates by more than two orders of magnitude from the one observed in normal star-forming galaxies, which is a tight, quasi-linear relation, explained by multiple physical processes, which influence the star formation history of galaxies such as starbursts, quenching, and merging episodes (Hjorth, Gall & Michałowski 2014; Calura et al. 2017). The upper limit as derived by Ouchi et al. (2013) in Himiko at $z \sim 6.6$ indicates a M_{dust} /SFR ratio similar to local metal-poor dwarfs.

The limits estimated for D1 in all the cases shown in Fig. 4 indicate values by at least one order of magnitude lower than local normal galaxies and starbursts. In particular, in the likely case of hot dust ($T = 70 \text{ K}$), our limit is consistent with the value measured in one local metal-poor starburst galaxy, i.e. SBS 0335-052 (Hunt et al. 2014; Cormier et al. 2017).

This suggests that D1 might be characterized by an extremely low metal and dust content. This is compatible also with other facts, i.e. the low [C II] emissivity discussed above, as well as the very blue slope of its ultraviolet spectrum.

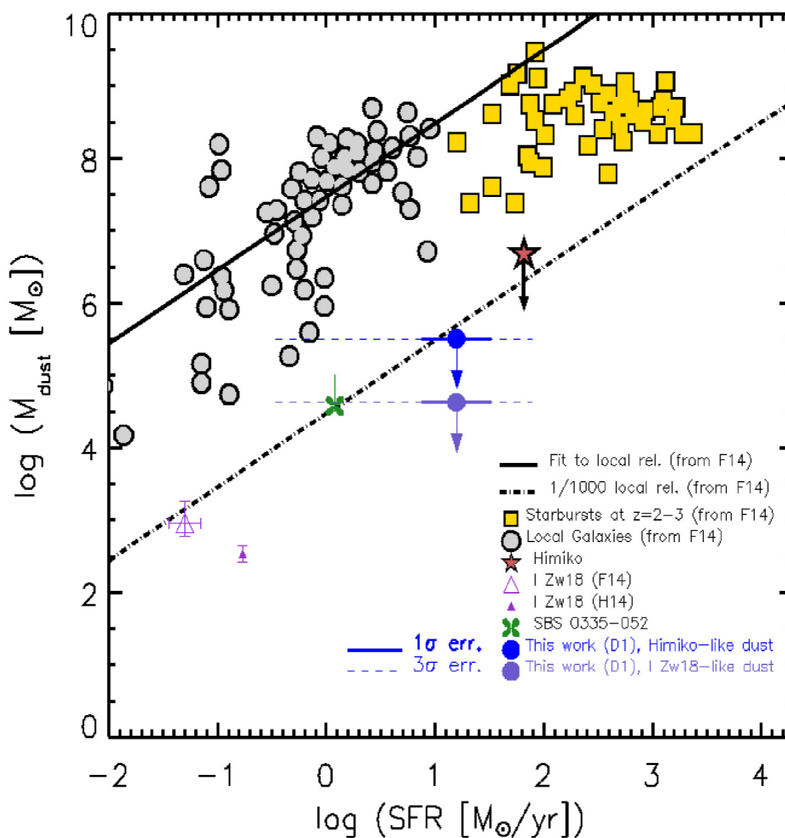


Figure 4. Observed relation between dust mass and SFR as obtained in this work from our non-detection in the continuum, compared to the values derived in local and distant star-forming galaxies. Our estimates are the blue solid and violet circles with horizontal error bars and downpointing arrows, obtained if Himiko-like dust grains (characterized by spectral index $\beta = 1.5$ and dust temperature $T = 40$ K as in Ouchi et al. 2013) and I Zw18-like (with spectral index $\beta = 2$ and dust temperature 70 K as in Hunt et al. 2014) dust are assumed, respectively. Both our upper limits are reported with their 1σ (blue and violet thick solid lines) and 3σ (blue and violet thin dashed lines) error bars. The grey solid circles and yellow squares are compilation of local star-forming galaxies and starbursts at $z = 2-3$, respectively, from Fisher et al. (2014). The light red star is the upper limit on the dust mass of Himiko as derived in Fisher et al. (2014). The solid and dot-dashed black lines are a linear fit to the local relation from Fisher et al. (2014) and the same fit rescaled down by a factor 1000, respectively. The open and solid purple triangles with error bars are dust mass estimates for I Zw18 presented by Fisher et al. (2014) and Hunt et al. (2014), respectively. The green clover is the value estimated by Hunt et al. (2014) for the local low-metallicity dwarf galaxy SBS 0335-052, where the error bar for the dust mass considers the upper limit of $10^5 M_{\odot}$ from Cormier et al. (2017).

The production of dust in galaxies at epochs near reionization is a poorly known matter. The appearance of dust is probably a rapid process, as galaxies at larger redshifts than Himiko and with comparable SFR values show much larger dust masses (Mattsson et al. 2015; Hashimoto et al. 2018). More generally, very little is known on dust production at low metallicity and in galaxies with low SFR at both low and high redshift, even in SFR regimes where tight, robustly constrained scaling relations followed by luminous galaxies are generally well established (e.g. Da Cunha et al. 2010; Hjorth et al. 2014). This outlines the need of sensitive instruments which can allow us to trace the dust content either in local low metallicity systems and in high redshift galaxies. Of these instruments, the best candidate in the future is the infrared telescope SPICA, which will reach unprecedented sensitivity at mid-IR and FIR wavelengths (e.g. Fernández-Ontiveros et al. 2017).

3.3.4 On the presence of cold gas in proto-GCs

D1 contains at least one very compact young stellar cluster, as revealed by the strongly concentrated emission detected in its centre, with other, similar systems in its proximity. A fundamental question

regarding the origin of high- z star clusters and their link with GCs concern their capability to retain their gas during and immediately after an episode of star formation and how much time they spend embedded in their natal gas cloud.

In some cases, high-spatial resolution ALMA observations of young massive clusters (YMC) in nearby star-forming galaxies show that at ages of \sim a few Myr, they are still embedded in their parent molecular cloud, and that the cocoons of cold gas enshrouding the cluster are essentially undisturbed (Turner et al. 2017; Silich et al. 2020).

Other observations of YMC with stellar masses of $10^5-10^6 M_{\odot}$ in nearby dwarf, spiral and interacting galaxies indicate a small content or absence of cold gas in or nearby the clusters already a few Myr after their formation (Bastian, Hollyhead & Cabrera-Ziri 2014; Cabrera-Ziri et al. 2015). These evidences stress that the capability of young clusters to retain cold gas may depend on several factors, including mass, size, age of the cluster, and star formation efficiency (Silich & Tenorio-Tagle 2017).

Simulations of isolated compact stellar systems with sub-pc resolution, currently out of reach in a cosmological context, are suitable to resolve the internal structure of bound clusters and the role of crucial phenomena, such as stellar feedback and gas accretion.

These simulations have shown that the energetic feedback of massive stars, through both stellar winds and core-collapse supernovae, can blow out the dense gas in which they are embedded in a short time, of the order of ~ 10 Myr (e.g. Calura et al. 2015; see also Silich & Tenorio-Tagle 2017; Yadav et al. 2017), comparable to the estimated age of the stellar populations of D1 (V19).

Current scenarios for the formation of multiple stellar populations in GCs envisage the presence of reservoirs of cold gas available nearby young clusters, ready to be accreted after massive stars have stopped restoring energy into their surroundings, i.e. on time-scales of the order of ~ 30 Myr (e.g. Naiman, Ramirez-Ruiz & Lin 2011; D’Ercole, D’Antona & Vesperini 2016; Calura et al. 2019). These reservoirs of cold gas can be present if star clusters form within the disc of a dwarf galaxy (e.g. Kravtsov & Gnedin 2005; Elmegreen, Malhotra & Rhoads 2012; Kruijssen 2015) or in mergers.

In cosmological hydrodynamical simulations performed at the highest resolution, bound and dense clumps in gas-rich high-redshift galaxies have been identified with sizes and masses marginally consistent with the typical values of star clusters (Ma et al. 2020; Phipps et al. 2020). The birth of these clumps occurs in high-pressure regions with typical surface density values $\Sigma_g > 10^2 M_\odot \text{pc}^{-2}$, namely in regions, which are rich in molecular gas and where the formation of bound clusters is particularly efficient (e.g. Li and Gnedin 2019), in conditions which may be particularly common in high-redshift galaxies, promoted by the highest frequency of starbursts and interactions (Elmegreen & Efremov 1997).

Finally, we use the value obtained here for the [C II] luminosity of D1 to derive constraints on its molecular gas content. Recently, Zanella et al. (2018) presented a tight correlation between the [C II] luminosity and the molecular gas mass in main sequence and starburst galaxies. This relation seems to hold across a wide range of SFR and metallicity, in particular down to values $12 + \log \text{O}/\text{H} \sim 8$ or less, which may be typical for dwarf galaxies or metal-poor systems at high redshift. Assuming a conversion factor between $L_{[\text{C II}]}$ and M_{mol} of $\alpha_{[\text{C II}]} = 31 M_\odot/L_\odot$, with our $L_{[\text{C II}],\text{D1}}$ value from our tentative detection, we obtain a molecular gas mass $M_{\text{mol}} = 9 \times 10^7 M_\odot$. This implies an upper limit on the dust-to-gas ratio of 0.0036 (computed for a dust mass $M_d < 3.2 \times 10^5 M_\odot$) and might be indicative of the presence of a large reservoir of molecular gas in proximity of D1. This particular aspect needs to be investigated further in the next future, when deeper observations will be carried on² and more constraints on the gas content of proto-GCs will be available.

4 CONCLUSIONS

The properties of [C II] emitting galaxies are generally studied through the $L_{[\text{C II}]}$ –SFR relation, which at high redshift was studied so far mostly in normal galaxies, i.e. generally with $L_{[\text{C II}]} > 10^7 L_\odot$. At present, very little about the behaviour of such relation is known in systems with lower [C II] luminosity and very low ($\sim 10^7 M_\odot$) stellar mass. In this work, we reported on recent ALMA observations of D1, a strongly magnified $M_* \sim 10^7 M_\odot$ system at $z \sim 6.145$, which contains globular cluster precursors, aimed at the detection of the [C II] emission line. Since the discovery of GC progenitors at high redshift, ours is the first attempt to probe directly the physical properties of their cold gas through IR observations. Our observations

allowed us to constrain the [C II] emissivity of D1, with important consequences for studies of extremely faint systems.

After a careful analysis of the ALMA cube performed with an automatic procedure, testing various possible values for the linewidth value and searching for features present in different regions of the ALMA FoV, we were able to find a 4σ tentative detection of [C II] emission, with a spatial offset from the centre of the UV detection of ~ 0.15 – 0.2 arcsec, velocity offset with respect to the Ly α emission of $+21 \pm 128 \text{ km s}^{-1}$, linewidth of $110 \pm 50 \text{ km s}^{-1}$, and a flux density of $0.46 \pm 0.22 \text{ mJy}$. This translates into an intrinsic (i.e. corrected for lensing) [C II] luminosity of $L_{[\text{C II}]} = (2.9 \pm 1.4) 10^6 L_\odot$.

Despite a large uncertainty on the SFR value, our estimate occupies a poorly explored region of the $L_{[\text{C II}]}$ –SFR plot. Taking the measured SFR at face value, our estimates lie more than ~ 1 dex below the $L_{[\text{C II}]}$ –SFR relation observed in local and high redshift systems.

Our tentative detection confirms a deficiency of [C II] emission in high-redshift systems. To explain this finding we considered several possibilities, including a low-density gas driven by intense stellar feedback occurring in compact stellar clusters, a strong radiation field or a low metal content. The later possibility appears confirmed by the upper limit on the dust mass as derived from the continuum flux, which for a reasonable range of the main parameters determining the dust mass (the FIR spectral index β and the dust temperature) indicate lensing-corrected dust masses $\leq 3 \times 10^5 M_\odot$ and, in the likely case of hot dust ($T = 70 \text{ K}$), we find an upper limit of $4 \times 10^4 M_\odot$, consistent with the values measured in the local low-metallicity starburst SBS 0335-052. A low dust content is confirmed also by the extremely blue slope of its UV continuum (V19).

New GC precursors are continuously discovered in lensed fields (Kikuchihara et al. 2020; Vanzella et al. 2020a). In the future, further deep ALMA pointings on some of these systems are needed to make progress in this relatively young field and improve our current knowledge of their physical properties. As for D1, in order to better constrain both its [C II] emissivity and IR continuum and confirm our detection, deeper observations will be required, which will be proposed in next ALMA cycles.

ACKNOWLEDGEMENTS

This paper makes use of the following ALMA data: ADS/JAO.ALMA#2018.1.00781.S. ALMA is a partnership of ESO (representing its member states), NSF (USA) and NINS (Japan), together with NRC (Canada), MOST and ASIAA (Taiwan), and KASI (Republic of Korea), in cooperation with the Republic of Chile. The Joint ALMA Observatory is operated by ESO, AUI/NRAO and NAOJ. An anonymous referee is acknowledged for several useful suggestions. We wish to thank L. Vallini and E. Vesperini for several interesting discussions. FC acknowledges support from grant PRIN MIUR 20173ML3WW_001. EV, MM, PR, and PB acknowledge support from PRIN MIUR 2017WSCC32. SC and AL acknowledge support from the ERC Advanced Grant INTERSTELLAR H2020/740120. We acknowledge funding from the INAF mainstream (1.05.01.86.31). MM and PB acknowledge financial support from ASI through the agreement ASI-INAF n. 2018-29-HH.0.

DATA AVAILABILITY STATEMENT

The data underlying this article will become public on 2020 September 4, and will be available for download at the ALMA Science Archive at <https://almascience.eso.org/asax/>.

²By means of the online ALMA sensitivity calculator, we estimated that ~ 10 -h integration will be sufficient to confirm our detection at 8σ .

REFERENCES

- Arata S., Yajima H., Nagamine K., Abe M., Khochfar S., 2020, *MNRAS*, 498, 5541
- Aravena M. et al., 2016, *ApJ*, 833, 71
- Bacon R. et al., 2015, *A&A*, 575, A75
- Bakx T. J. L. C. et al., 2020, *MNRAS*, 493, 4294
- Bastian N., Hollyhead K., Cabrera-Ziri I., 2014, *MNRAS*, 445, 378
- Bergamini P., Rosati P. et al., 2019, *A&A*, 631, A130
- Bergamini P. et al., 2020, *A&A*, preprint (arXiv:2010.00027)
- Bethermin M. et al., 2020, *A&A*, 643, A2
- Bianchi S., 2013, *A&A*, 552, A89
- Bouwens R. J., 2017, preprint (arXiv:1711.02090)
- Bouwens R. J. et al., 2012, *ApJ*, 752, L5
- Bradač M. et al., 2017, *ApJ*, 836, L2
- Bruzual G., Charlot S., 2003, *MNRAS*, 344, 1000
- Cabrera-Ziri I. et al., 2015, *MNRAS*, 448, 2224
- Calura F., Few C. G., Romano D., D’Ercole A., 2015, *ApJ*, 814, L14
- Calura F. et al., 2017, *MNRAS*, 465, 54
- Calura F., D’Ercole A., Vesperini E., Vanzella E., Sollima A., 2019, *MNRAS*, 489, 3269
- Caminha G. B. et al., 2017, *A&A*, 600, A90
- Carilli C. L., Walter F., 2013, *ARA&A*, 51, 105
- Carniani S. et al., 2017, *A&A*, 605, A42
- Carniani S. et al., 2018a, *MNRAS*, 478, 1170
- Carniani S., Maiolino R., Smit R., Amorin R., 2018b, *ApJ*, 854, L7
- Carniani S. et al., 2020, *MNRAS*, 499, 5136
- Castellano M. et al., 2016, *A&A*, 590, A31
- Cody A. M., Carter D., Bridges T. J., Mobasher B., Poggianti B. M., 2009, *MNRAS*, 396, 1647
- Cormier D. et al., 2017, *MNRAS*, 468, L87
- D’Ercole A., Vesperini E., D’Antona F., McMillan S. L. W., Recchi S., 2008, *MNRAS*, 391, 825
- D’Ercole A., D’Antona F., Vesperini E., 2016, *MNRAS*, 461, 4088
- da Cunha E., Eminian C., Charlot S., Blaizot J., 2010, *MNRAS*, 403, 1894
- da Cunha E. et al., 2013, *ApJ*, 766, 13
- De Looze I. et al., 2014, *A&A*, 568, A62
- Decarli R. et al., 2018, *ApJ*, 854, 97
- Dessauges-Zavadsky M. et al., 2017, *A&A*, 605, A81
- Dunne L., Eales S., Edmunds M., Ivison R., Alexander P., Clements D. L., 2000, *MNRAS*, 315, 115
- Elmegreen B. G., Efremov Y. N., 1997, *ApJ*, 480, 235
- Elmegreen B. G., Malhotra S., Rhoads J., 2012, *ApJ*, 757, 9
- Ferland G. J., 2017, *Rev. Mex. Astron. Astrofis*, 53, 385
- Fernández-Ontiveros J. A. et al., 2017, *PASA*, 34, e053
- Ferrara A. et al., 2019, *MNRAS*, 489, 1
- Fisher D. B. et al., 2014, *Nature*, 505, 186
- Gilli R. et al., 2014, *A&A*, 562, A67
- Goldsmith P. F., Langer W. D., Pineda J. L., Velusamy T., 2012, *ApJS*, 203, 13
- González-López J. et al., 2017, *ApJ*, 846, L22
- Harikane Y. et al., 2018, *ApJ*, 859, 84
- Harikane Y. et al., 2020, *ApJ*, 896, 93
- Hashimoto T. et al., 2018, *Nature*, 557, 392
- Herrera-Camus R. et al., 2015, *ApJ*, 800, 1
- Herrera-Camus R. et al., 2018, *ApJ*, 861, 95
- Hjorth J., Gall C., Michałowski M. J., 2014, *ApJ*, 782, L23
- Hodge J. A., da Cunha E., 2020, preprint (arXiv:2004.00934)
- Hunt L. K. et al., 2014, *A&A*, 561, A49
- Inoue A. K. et al., 2016, *Science*, 352, 1559
- Inoue A. K., Hashimoto T., Chihara H., Koike C., 2020, *MNRAS*, 495, 1577
- Katz H. et al., 2019, *MNRAS*, 487, 5902
- Kaufman M. J., Wolfir M. G., Hollenbach D. J., 2006, *ApJ*, 644, 283
- Kikuchi S. et al., 2020, *ApJ*, 893, 60
- Knudsen K. K. et al., 2016, *MNRAS*, 462, L6
- Kohandel M., Pallottini A., Ferrara A., Zanella A., Behrens C., Carniani S., Gallerani S., Vallini L., 2019, *MNRAS*, 487, 3007
- Kravtsov A. V., Gnedin O. Y., 2005, *ApJ*, 623, 650
- Kruijssen J. M. D., 2015, *MNRAS*, 454, 1658
- Lagache G., Cousin M., Chatzikos M., 2018, *A&A*, 609, A130
- Lagattuta D. J. et al., 2019, *MNRAS*, 485, 3738L
- Laporte N. et al., 2017, *ApJ*, 837, L21
- Laporte N. et al., 2019, *MNRAS*, 487, L81
- Li H., Gnedin O. Y., 2019, *MNRAS*, 486, 4030
- Lianou S., Barmby P., Mosenkov A. A., Lehnert M., Karczewski O., 2019, *A&A*, 631, A38
- Lotz J. et al., 2017, *ApJ*, 837, 97
- Lupi A., Bovino S., 2020, *MNRAS*, 492, 2818
- Lupi A., Pallottini A., Ferrara A., Bovino S., Carniani S., Vallini L., 2020, *MNRAS*, 496, 5160
- McMullin J. P., Waters B., Schiebel D., Young W., Golap K., 2007, *ASPC*, 376, 127
- Ma X. et al., 2020, *MNRAS*, 493, 4315
- Maiolino R. et al., 2015, *MNRAS*, 452, 54
- Marrone D. P. et al., 2018, *Nature*, 553, 51
- Matthee J. et al., 2017, *ApJ*, 851, 145
- Matthee J. et al., 2019, *ApJ*, 881, 124
- Mattsson L., 2015, preprint (arXiv:1505.04758)
- Meneghetti M. et al., 2017, *MNRAS*, 472, 3177
- Merlin E. et al., 2016, *A&A*, 590, A30
- Nagao T., Maiolino R., De Breuck C., Caselli P., Hatsukade B., Saigo K., 2012, *The Messenger*, 149, 44
- Naiman J. P., Ramirez-Ruiz E., Lin D. N. C., 2011, *ApJ*, 735, 25
- Olsen K., Greve T. R., Narayanan D., Thompson R., Davé R., Niebla Rios L., Stawinski S., 2017, *ApJ*, 846, 105
- Ouchi M. et al., 2013, *ApJ*, 778, 102
- Pallottini A., Ferrara A., Bovino S., Vallini L., Gallerani S., Maiolino R., Salvadori S., 2017, *MNRAS*, 471, 4128
- Pallottini A. et al., 2019, *MNRAS*, 487, 1689
- Pentericci L. et al., 2016, *ApJ*, 829, L11
- Phipps F., Khochfar S., Varri A. L., Dalla Vecchia C., 2020, *A&A*, 641, A132
- Priddey R. S., McMahon R. G., 2001, *MNRAS*, 324, L17
- Ricotti M., 2002, *MNRAS*, 336, L33
- Riechers D. A. et al., 2013, *Nature*, 496, 329
- Salpeter E. E., 1955, *ApJ*, 121, 161
- Schaerer D., 2002, *A&A*, 382, 28
- Schaerer D. et al., 2015, *A&A*, 576, L2
- Schaerer D. et al., 2020, *A&A*, 643, A3
- Silich S., Tenorio-Tagle G., 2017, *MNRAS*, 465, 1375
- Silich S., Tenorio-Tagle G., Martínez-González S., Turner J., 2020, *MNRAS*, 494, 97
- Sommovigo L., Ferrara A., Pallottini A., Carniani S., Gallerani S., Decataldo D., 2020, *MNRAS*, 497, 956
- Turner J. L. et al., 2017, *ApJ*, 846, 73
- Vallini L., Gallerani S., Ferrara A., Baek S., 2013, *MNRAS*, 433, 1567
- Vallini L., Gallerani S., Ferrara A., Pallottini A., Yue B., 2015, *ApJ*, 813, 36
- Vanzella E. et al., 2017a, *MNRAS*, 467, 4304 (V17)
- Vanzella E. et al., 2017b, *ApJ*, 842, 47
- Vanzella E. et al., 2019, *MNRAS*, 483, 3618
- Vanzella E. et al., 2020a, *MNRAS*, 491, 1093
- Vanzella E. et al., 2020b, *A&A*, preprint (arXiv:2009.08458)
- Venemans B. P. et al., 2012, *ApJ*, 751, L25
- Venemans B. P. et al., 2018, *ApJ*, 866, 159
- Walker M. G., Mateo M., Olszewski E. W., Gnedin O. Y., Wang X., Sen B., Woodroffe M., 2007, *ApJ*, 667, L53
- Wang S. X. et al., 2013, *ApJ*, 778, 179
- Willott C. J., Omont A., Bergeron J., 2013, *ApJ*, 770, 13
- Willott C. J., Carilli C. L., Wagg J., Wang R., 2015, *ApJ*, 807, 180
- Wright E. L., 2006, *PASP*, 118, 1711
- Yadav N., Mukherjee D., Sharma P., Nath B. B., 2017, *MNRAS*, 465, 1720
- Zanella A. et al., 2018, *MNRAS*, 481, 1976

APPENDIX A: [C II] EMISSIVITY IN MOCK ALMA OBSERVATIONS OF D1

In this appendix, we discuss further the robustness of our estimate on the [C II] luminosity of D1, considering the effects of various parameters on the estimated SNR. First, we investigate the possibility that a faint [C II] emission might be result of flux distributed over a large area, thus lowering the surface brightness of the source and leading to an underestimation of its total luminosity (see Carniani et al. 2020).

By using mock ALMA observations, here we analyse how D1 would appear considering various assumptions on its linewidth, geometry of the source and [C II] luminosity.

We use the CASA *simobserve* task to generate mock observations of D1 by setting the same antenna array configurations, weather condition, and on-source exposure times of the real observations (see Section 2.3). As input model we adopt the rest-frame UV *HST* images of D1 and we generate synthetic observations for different values of [C II] luminosity ($6 \leq \text{Log}(L_{[\text{C II}]} / L_{\odot}) \leq 6.8$) and for three different line width values of the [C II] profile, namely 50, 100, and 350 km s^{-1} . For each set of parameters, we compute 10 ALMA simulations of D1. In each mock image, we estimate the S/N of the emission at the position of the artificial source, placed at the centre of the field of view.

Fig. A1 shows the SNR of the mock D1 images as a function of [C II] luminosity and for different values of line width, expressed as FWHM. The figure shows two different assumptions on the distribution of the emission, with an extended emission in the

left-hand panel and a point-like one on the righthand panel (the assumptions on the geometry of the source are shown in the top left-hand inset of both panels).

In the case of the extended source, we considered all the emission down to flux values corresponding to 0.1 of the peak. Instead, in the case of the compact source, we performed a cut at flux values of 0.4 of the emission peak.

In the case of extended (point-like) emission, we measure an $\text{SNR} > 3$ for $L_{[\text{C II}]} > 3.16 \times 10^6 L_{\odot}$ ($L_{[\text{C II}]} > 1.8 \times 10^6 L_{\odot}$) and $\text{FWHM} = 50\text{--}100 \text{ km s}^{-1}$. On the other hand, if the line has an $\text{FWHM} = 350 \text{ km s}^{-1}$, it will be detected only when $L_{[\text{C II}]} > 4.0 \times 10^6 L_{\odot}$ in the case of point-like emission.

A few more considerations are in order regarding the values obtained as a function of the assumed distribution of the emission, shown in the left panel of Fig. A1, which can be higher than the value estimated in Section 3.2. This discrepancy is associated to the assumption on the extension of the [C II] emission. While in Section 3.2 we assumed that the [C II] emission arises from the luminous knot of D1 that is spatially unresolved in current ALMA observations, in the simulations, we consider an extended UV emission elongated towards south-west. In the latter case, the [C II] emission is spatially resolved out and part of the flux will be lost. From the comparison of the output luminosities estimated from the simulations with the input luminosities, using a circular aperture of radius 1 arcsec, we estimate that in spatially resolved observations the [C II] luminosity can be underestimated by a factor of 1.3 (see also Carniani et al. 2020).

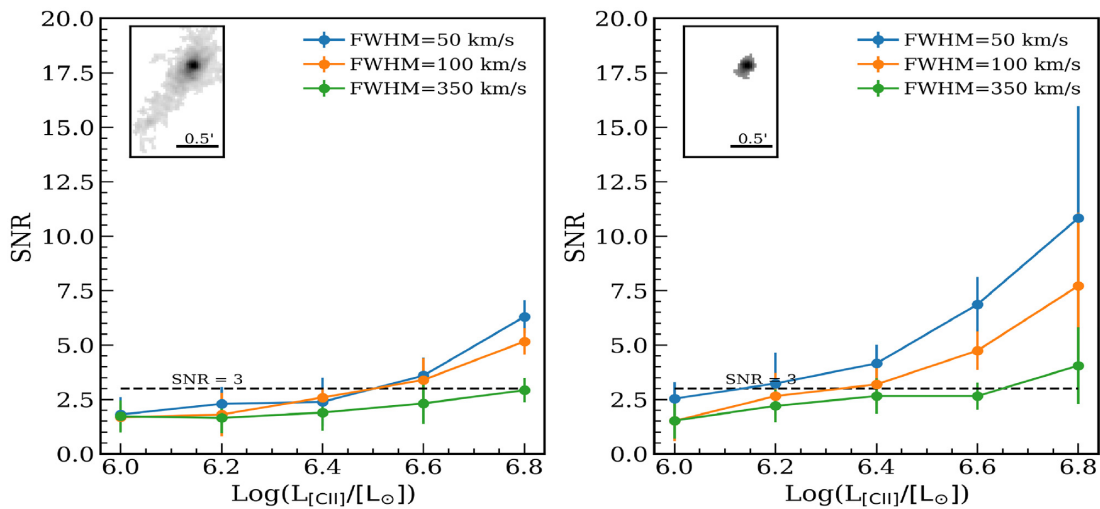


Figure A1. Mock ALMA observations of D1 for various assumptions on the line width, on the luminosity and spatial distribution of the [C II] emission. In the left- and right-hand panels D1 is modelled as an extended and point-like source, respectively, with the adopted light distribution reported in the top left-hand inset of each figure. The plots show the S/N as a function of [C II] luminosity, computed assuming a linewidth of 50 km s^{-1} (blue solid lines and solid circles), 100 km s^{-1} (orange lines), and 350 km s^{-1} (green lines). For further details, see Appendix A.

This paper has been typeset from a \LaTeX file prepared by the author.