

University of Groningen

White Matter Lesions and Outcomes After Endovascular Treatment for Acute Ischemic Stroke

MR CLEAN Registry investigators*; Uniken Venema, Simone M; Postma, Alida A; van den Wijngaard, Ido R; Vos, Jan Albert; Lingsma, Hester F; Bokkers, Reinoud P H; Hofmeijer, Jeannette; Dippel, Diederik W J; Majoie, Charles B

Published in:
Stroke

DOI:
[10.1161/STROKEAHA.120.033334](https://doi.org/10.1161/STROKEAHA.120.033334)

IMPORTANT NOTE: You are advised to consult the publisher's version (publisher's PDF) if you wish to cite from it. Please check the document version below.

Document Version
Publisher's PDF, also known as Version of record

Publication date:
2021

[Link to publication in University of Groningen/UMCG research database](#)

Citation for published version (APA):

MR CLEAN Registry investigators*, Uniken Venema, S. M., Postma, A. A., van den Wijngaard, I. R., Vos, J. A., Lingsma, H. F., Bokkers, R. P. H., Hofmeijer, J., Dippel, D. W. J., Majoie, C. B., & van der Worp, H. B. (2021). White Matter Lesions and Outcomes After Endovascular Treatment for Acute Ischemic Stroke: MR CLEAN Registry Results. *Stroke*, 52(9), 2849-2857. <https://doi.org/10.1161/STROKEAHA.120.033334>

Copyright

Other than for strictly personal use, it is not permitted to download or to forward/distribute the text or part of it without the consent of the author(s) and/or copyright holder(s), unless the work is under an open content license (like Creative Commons).

The publication may also be distributed here under the terms of Article 25fa of the Dutch Copyright Act, indicated by the "Taverne" license. More information can be found on the University of Groningen website: <https://www.rug.nl/library/open-access/self-archiving-pure/taverne-amendment>.

Take-down policy

If you believe that this document breaches copyright please contact us providing details, and we will remove access to the work immediately and investigate your claim.

Downloaded from the University of Groningen/UMCG research database (Pure): <http://www.rug.nl/research/portal>. For technical reasons the number of authors shown on this cover page is limited to 10 maximum.



White Matter Lesions and Outcomes After Endovascular Treatment for Acute Ischemic Stroke

MR CLEAN Registry Results

Simone M. Uniken Venema¹, MD; Alida A. Postma, MD, PhD; Ido R. van den Wijngaard¹, MD, PhD; Jan Albert Vos¹, MD, PhD; Hester F. Lingsma, PhD; Reinoud P.H. Bokkers, MD, PhD; Jeannette Hofmeijer, MD, PhD; Diederik W.J. Dippel¹, MD, PhD; Charles B. Majoie¹, MD, PhD; H. Bart van der Worp¹, MD, PhD; on behalf of the MR CLEAN Registry Investigators*

BACKGROUND: Cerebral white matter lesions (WMLs) have been associated with a greater risk of poor functional outcome after ischemic stroke. We assessed the relations between WML burden and radiological and clinical outcomes in patients treated with endovascular treatment in routine practice.

METHODS: We analyzed data from the MR CLEAN Registry (Multicenter Randomized Controlled Trial of Endovascular Treatment for Acute Ischaemic Stroke in the Netherlands)—a prospective, multicenter, observational cohort study of patients treated with endovascular treatment in the Netherlands. WMLs were graded on baseline noncontrast computed tomography using a visual grading scale. The primary outcome was the score on the modified Rankin Scale at 90 days. Secondary outcomes included early neurological recovery, successful reperfusion (extended Thrombolysis in Cerebral Infarction $\geq 2b$), futile recanalization (modified Rankin Scale score ≥ 3 despite successful reperfusion), and occurrence of symptomatic intracranial hemorrhage. We used multivariable logistic regression models to assess associations between WML severity and outcomes, taking the absence of WML on noncontrast computed tomography as the reference category.

RESULTS: Of 3180 patients included in the MR CLEAN Registry between March 2014 and November 2017, WMLs were graded for 3046 patients and categorized as none ($n=1855$; 61%), mild ($n=608$; 20%), or moderate to severe ($n=588$; 19%). Favorable outcome (modified Rankin Scale score, 0–2) was achieved in 838 patients (49%) without WML, 192 patients (34%) with mild WML, and 130 patients (24%) with moderate-to-severe WML. Increasing WML grades were associated with a shift toward poorer functional outcome in a dose-dependent manner (adjusted common odds ratio, 1.34 [95% CI, 1.13–1.60] for mild WML and 1.67 [95% CI, 1.39–2.01] for moderate-to-severe WML; $P_{\text{trend}} < 0.001$). Increasing WML grades were associated with futile recanalization ($P_{\text{trend}} < 0.001$) and were inversely associated with early neurological recovery ($P_{\text{trend}} = 0.041$) but not with the probability of successful reperfusion or symptomatic intracranial hemorrhage.

CONCLUSIONS: An increasing burden of WML at baseline is associated with poorer clinical outcomes after endovascular treatment for acute ischemic stroke but not with the probability of successful reperfusion or symptomatic intracranial hemorrhage.

GRAPHIC ABSTRACT: An online [graphic abstract](#) is available for this article.

Key Words: acute ischemic stroke ■ cerebral small vessel diseases ■ odds ratio ■ radiography ■ registries

Correspondence to: Simone M. Uniken Venema, MD, Department of Neurology and Neurosurgery, University Medical Center Utrecht, PO Box 85500, 3508 GA Utrecht, the Netherlands. Email s.m.unikenvenema@umcutrecht.nl

*A list of all MR CLEAN Registry Investigators is given in the [Data Supplement](#).

The Data Supplement is available with this article at <https://www.ahajournals.org/doi/suppl/10.1161/STROKEAHA.120.033334>.

For Sources of Funding and Disclosures, see page 2856.

© 2021 The Authors. *Stroke* is published on behalf of the American Heart Association, Inc., by Wolters Kluwer Health, Inc. This is an open access article under the terms of the [Creative Commons Attribution](#) License, which permits use, distribution, and reproduction in any medium, provided that the original work is properly cited. *Stroke* is available at www.ahajournals.org/journal/str

Nonstandard Abbreviations and Acronyms

EVT	endovascular treatment
MR CLEAN	Multicenter Randomized Controlled Trial of Endovascular Treatment for Acute Ischaemic Stroke in the Netherlands
mRS	modified Rankin Scale
NCCT	noncontrast computed tomography
NIHSS	National Institutes of Health Stroke Scale
OR	odds ratio
sICH	symptomatic intracranial hemorrhage
WML	white matter lesion

Endovascular treatment (EVT) has emerged as the standard of care for patients with acute ischemic stroke due to large vessel occlusion.¹ Nonetheless, a substantial number of patients treated with EVT are functionally dependent 90 days after stroke, despite successful revascularization. A new area of research has focused on rapid and effective selection of patients who will likely derive most benefit from EVT based on clinical and radiological characteristics. The prognostic significance of certain imaging features, which may reflect either stroke evolution or cerebral vulnerability and resilience, is increasingly recognized.^{2,3} Accordingly, the selection of patients for EVT may shift from a largely time-based approach toward an imaging-based approach.³

Many patients with large vessel occlusion concurrently have varying degrees of cerebral small vessel disease, reflected by, among other signs, white matter lesions (WMLs) on baseline neuroimaging.⁴ Cerebral small vessel disease may limit the ability to recover from ischemic stroke^{5,6} or intracerebral hemorrhage.⁷ A higher burden of WML has also been associated with symptomatic intracranial hemorrhage (sICH) after treatment with intravenous thrombolysis.^{8,9} The prognostic importance of WML in patients with ischemic stroke caused by large vessel occlusion and treated with EVT is less well studied. Furthermore, findings from the few studies that assessed WML in the context of EVT have been inconsistent, possibly resulting from the use of selected study populations and varying imaging methods.^{10–13} Information on WML burden is readily available from noncontrast computed tomography (NCCT)¹⁴ and, when combined with clinical information on other prognostic factors, may inform treatment decisions or become implemented in prognostic models on EVT outcomes.

We aimed to clarify the associations between WML burden, assessed on baseline NCCT, and radiological and clinical outcomes in a large prospective cohort of patients treated with EVT in routine clinical practice in the Netherlands.

METHODS

Study Protocol, Patient Population, and Clinical Variables

The MR CLEAN Registry (Multicenter Randomized Controlled Trial of Endovascular Treatment for Acute Ischaemic Stroke) is a prospective, multicenter, observational study of patients with acute ischemic stroke treated with EVT in routine clinical practice in the Netherlands in 17 intervention centers.¹⁵ The current study is based on data from patients included in the MR CLEAN Registry between March 16, 2014, and November 1, 2017. Inclusion criteria for the current analysis were as follows: age ≥ 18 years; clinical diagnosis of acute ischemic stroke with a proximal arterial occlusion in the anterior circulation (internal carotid artery, middle cerebral artery [M1 and M2], or anterior cerebral artery [A1 and A2]), demonstrated with computed tomography angiography, magnetic resonance angiography, or digital subtraction angiography; and EVT initiated within 6.5 hours of symptom onset or last seen well. Trained study investigators collected clinical and demographic data through chart abstraction from electronic patient records. Local study investigators assessed modified Rankin Scale (mRS)¹⁶ scores at 90 days (± 14 days), as part of routine care.

Ethics Approval and Data Availability

The study protocol of the MR CLEAN Registry was reviewed by the Erasmus University Medical Center Ethics Committee, which served as the central review board for all participating centers. The requirement for written informed consent was waived, but patients or their representatives were provided with information on the study orally and in writing and were given the opportunity to refuse participation. Source data will not be made available, since no patient approval was obtained for sharing anonymized data. However, detailed analytic methods and study materials, including output files of statistical analyses, will be made available to other researchers on request to the corresponding author.

Neuroimaging Analysis

An imaging core laboratory, consisting of trained neuroradiologists and interventionists, blinded to all clinical findings except the side of symptoms, determined, among others, the extent of WML and collateral status on baseline (pretreatment) NCCT and single-phase computed tomography angiography, respectively. Pre- and post-EVT extended Thrombolysis in Cerebral Infarction scores were determined on digital subtraction angiography. Before imaging assessments, observers of the imaging core laboratory were given a training set including relevant definitions. The number of individual readers grading each imaging modality varied from 11 to 23. Each scan was graded by a single reader. Hence, no interrater agreement was determined for the imaging variables.

Assessment of WMLs

WMLs were graded using a simplified version of the Fazekas scale, which was originally designed for assessment of white matter hyperintensities on magnetic resonance imaging¹⁷ but has been applied to NCCT previously.^{14,18} In the present study, a total score ranging from 0 to 3 was given to indicate the

extent of WMLs in periventricular and deep brain regions combined, depending on their size and confluence (Figure I in the [Data Supplement](#)). The score used for statistical analyses was categorized as absent (score 0), mild (score 1), or moderate to severe (score 2 or 3).

Assessment of Collaterals

The collateral score was determined with a 4-point visual grading scale,¹⁹ with a score of 0 for absent collaterals (0% filling of the vascular territory downstream of the occlusion), 1 for poor collaterals (>0% and ≤50% filling), 2 for moderate collaterals (>50% and <100% filling), and 3 for excellent collaterals (100% filling). Interobserver agreement for this method has previously been determined in the MR CLEAN trial and was moderate (κ , 0.60).²⁰

Assessment of Reperfusion Status

The reperfusion status post-EVT was assessed with the extended Thrombolysis in Cerebral Infarction score, which ranges from 0 (no antegrade reperfusion of the occluded vascular territory) to 3 (complete antegrade reperfusion of the occluded vascular territory).²¹ A score of 2b or higher, which was considered successful reperfusion, could only be given if complete digital subtraction angiography runs including anteroposterior and lateral views were available. If a lateral view was missing, 2a was the highest possible score.

Outcome Measures

The primary outcome measure was functional outcome, defined as the score on the mRS at 90 days. Secondary clinical outcome measures included mortality at 90 days; futile recanalization, defined as functional dependence (mRS score, ≥3) at 90 days despite successful reperfusion at the end of EVT; and early neurological recovery, defined as a National Institutes of Health Stroke Scale (NIHSS)²² score of 0 or 1 at 24 hours after symptom onset or an improvement in NIHSS at 24 hours of at least 8 points compared with baseline NIHSS. Secondary radiological outcome measures were as follows: successful reperfusion at the end of EVT; occurrence of sICH, defined as an ICH that resulted in death or a decline of at least 4 points on the NIHSS, according to the Heidelberg Bleeding Classification²³; and collateral recruitment at baseline imaging.

Statistical Analysis

Baseline characteristics of the study population, categorized based on the degree of WML, were compared with standard statistics. We performed ordinal logistic regression to assess the association of WMLs with functional outcome and with collateral recruitment at baseline and binary logistic regression to assess the association of WMLs with futile recanalization, early neurological recovery, successful reperfusion, and occurrence of sICH. In the analysis for successful reperfusion, we performed a post hoc sensitivity analysis excluding patients for whom no 2-dimensional DSA view was available to assess extended Thrombolysis in Cerebral Infarction score after EVT ($n=375$). For collateral status, the proportional odds assumption was tested and not violated. In all analyses, WMLs were considered an ordinal variable, categorized as absent (score 0), mild (score 1), or moderate to severe (score 2 or 3). Absence

of WMLs was used as a reference category in all analyses. Unadjusted and adjusted common odds ratios (ORs) were calculated for each WML category compared with the reference category. Additionally, to assess the presence of a dose-response relationship between exposure (WML) and outcomes, we determined P_{trend} in all multivariable analyses.

Prespecified covariates, identified using causal directed acyclic graphs (Figure II in the [Data Supplement](#)),²⁴ were included in the multivariable models to reduce confounding bias. The analyses for functional outcome, mortality, early neurological recovery, and futile recanalization were adjusted for history of hypertension, age, history of atrial fibrillation, previous stroke, and history of diabetes. The analysis for collaterals was adjusted for age, history of hypertension, and history of diabetes; the analysis for sICH was adjusted for history of hypertension, baseline glucose, and antiplatelet or coumarin use; the analysis for successful reperfusion was adjusted for age, history of hypertension, and baseline glucose. To ascertain that the appropriate confounders had been selected, potential confounders were also selected using a backward elimination procedure, and the effect estimates were compared. In the analysis for functional outcome, we tested for statistical interaction of WML with successful reperfusion and time to reperfusion. In the analysis for sICH, we tested for statistical interaction between WML and intravenous thrombolysis with alteplase.

Multiple imputation was used to impute missing values, including missing WML and outcome variables, using the `AregImpute` function in R software. All variables used as covariates in the multivariable models were ≥98% complete, except baseline glucose (88.5% complete). As for the outcome variables, mRS at 90 days was known for 93.3% of patients, baseline collateral status for 93.6%, post-EVT extended Thrombolysis in Cerebral Infarction score for 97.4%, delta NIHSS (used for the calculation of early neurological recovery) for 89.3%, and occurrence of sICH for 100%.

Multivariable models were based on imputed values. Sensitivity analyses were performed for each outcome variable using a subset of patients with known values (ie, not imputed) for both WML and the outcome of interest.

All statistical analyses and data visualizations were performed with R software (version 3.6.1; R Foundation).

RESULTS

Patient Characteristics and Data Completeness

A total of 3180 patients (median age, 72 years [interquartile range, 61–81]; 1654 [52.0%] men) was included in this analysis (Figure 1). The extent of WML was known for 3046 of 3180 patients (95.8% complete), of whom 1850 (60.7%) had no WML, 608 (20.0%) had mild WML, and 588 (19.7%) had moderate or severe WML. A higher degree of WML was associated with higher age, male sex, and several comorbidities, as well as with a higher NIHSS score, systolic blood pressure, and blood glucose level on admission and longer time from symptom onset to groin puncture (Table I in the [Data Supplement](#)). The number of patients with prestroke functional dependency (mRS score of ≥3) was 148 (8.1%) for

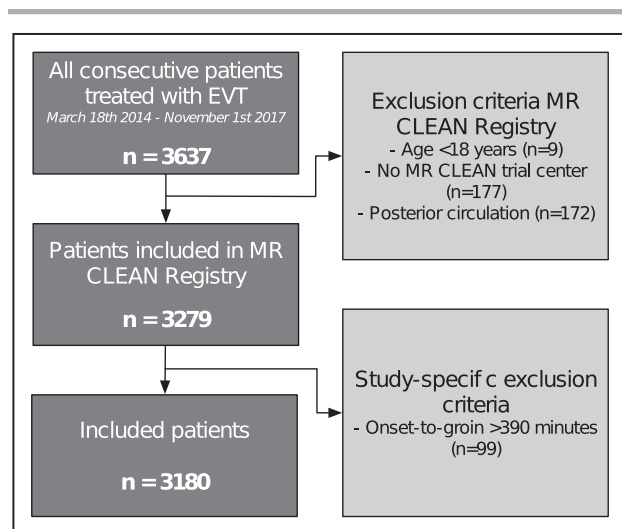


Figure 1. Flowchart of inclusion of patients in the study.

EVT indicates endovascular treatment; and MR CLEAN, Multicenter Randomized Controlled Trial of Endovascular Treatment for Acute Ischaemic Stroke in the Netherlands.

patients without WML, 85 (14.4%) for mild WML, and 117 (20.5%) for moderate-to-severe WML.

Primary Outcome

The distribution of mRS scores by WML grade is shown in Figure 2. Favorable outcome (mRS score, 0–2) was achieved in 838 patients (49%) without WML, 192 patients (34%) with mild WML, and 130 patients (24%) with moderate-to-severe WML. Univariable analysis demonstrated a dose-dependent association between the severity of WML and functional outcome (OR, 1.84 [95% CI, 1.55–2.17] for mild WML and 2.79 [95% CI, 2.34–3.33] for moderate-to-severe WML), which persisted in the multivariable model (adjusted common OR, 1.34 [95% CI, 1.13–1.60] for mild WML and 1.67 [95% CI, 1.39–2.01] for moderate-to-severe WML; Table; Figure 3). The sensitivity analysis, including only patients with known WML and mRS score (n=2840), showed largely similar associations (Table). There was no statistically significant interaction between WML and successful reperfusion ($P=0.47$) or time to reperfusion ($P=0.09$) in the analysis for functional outcome.

Secondary Clinical Outcomes

At 90 days, 351 patients (20.4%) without WML had died, as compared with 215 patients (38.2%) with mild WML and 249 patients (44.9%) with moderate-to-severe WML (Table). In unadjusted and adjusted analyses, a dose-dependent increase in the odds of death was observed with increasing WML grades (Table; Figure 3), with similar results in the sensitivity analysis (Table).

Of 2970 patients with known reperfusion status after EVT, 1848 (62.2%) had successful reperfusion. Of the 1767 patients of whom an mRS score at 90 days was also available, 900 (50.9%) had futile recanalization. This proportion increased with higher WML grades (461 patients [43.0%] without WML, 215 patients [55.9%] with mild WML, and 249 patients [70.6%] with moderate-to-severe WML). In univariable analysis, both mild and moderate-to-severe WMLs were associated with futile recanalization (OR, 1.60 [95% CI, 1.25–2.06] and 3.04 [95% CI, 2.32–3.98], respectively). In multivariable analysis, only moderate-to-severe WML was associated with futile recanalization, and this was similar in the sensitivity analysis (Table; Figure 3).

Early neurological recovery was observed in 1071 of 2840 patients (37.8%) with available data and in 704 patients (42.0%) without WML, 187 patients (35.0%) with mild WML, and 152 patients (29.6%) with moderate-to-severe WML. In multivariable analysis, both WML grades were not significantly associated with the probability of early neurological recovery as the upper boundary of the 95% CI crossed 1.0 (OR, 0.88 [95% CI, 0.72–1.07] for mild WML and 0.81 [95% CI, 0.65–1.01] for moderate-to-severe WML). However, there was a linear trend toward a lower probability of early neurological recovery with increasing WML (P_{trend} , 0.041; Table; Figure 3). In the sensitivity analysis, the association was statistically significant for moderate-to-severe WML (Table).

Secondary Radiological Outcomes

In univariable analysis, both mild and moderate-to-severe WMLs were associated with worse collaterals at baseline (common OR, 0.83 [95% CI, 0.70–0.98] and 0.79 [95% CI, 0.67–0.94], respectively), but these associations became nonsignificant in the multivariable model (Table). There was no difference across WML grades in occurrence of sICH or successful reperfusion (Table). Likewise, in univariable and multivariable models, WML grade was not associated with the probability of sICH or successful reperfusion (Table). For the post hoc sensitivity analysis including only patients with a 2-dimensional DSA view available (n=2805), the results were similar (data not shown).

Sensitivity analyses using complete WML and outcome data demonstrated largely similar associations (Table). There was no statistical interaction between WML and treatment with intravenous alteplase ($P=0.52$) in the model for sICH.

In all multivariable analyses, when confounders were selected using backward elimination rather than with directed acyclic graphs, effect estimates for WML grades were similar (Table II in the [Data Supplement](#)).

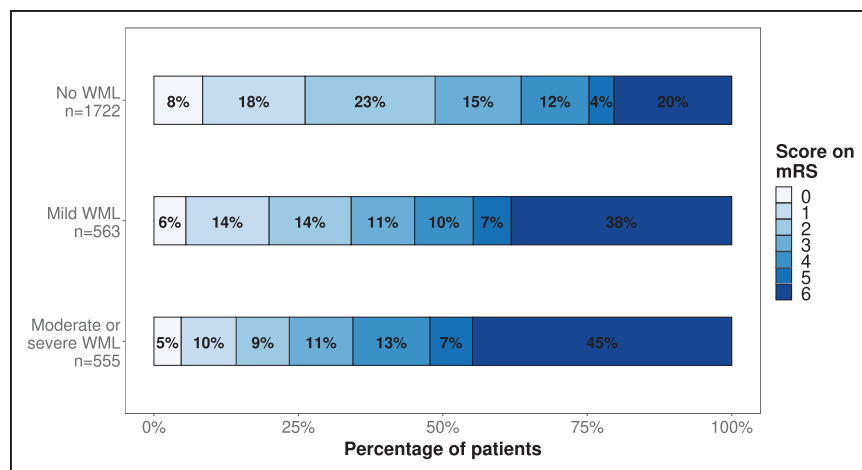


Figure 2. Distribution of 90-d modified Rankin Scale (mRS) scores according to the degree of white matter lesions (WMLs).

DISCUSSION

In this prospective multicenter cohort study of 3180 patients with acute ischemic stroke treated with EVT, an increasing burden of WML at baseline was independently associated with a lower probability of early neurological recovery, poorer functional outcome and an increased risk of death at 90 days, and futile recanalization. We found no independent association of WML with the occurrence of sICH or probability of successful reperfusion, nor with baseline collateral status.

Preexisting WMLs have been associated with poorer functional outcomes after ischemic stroke in several previous studies.^{5,6} The presumed underlying biological mechanisms are multifold and may involve reduced cerebral network efficiency,²⁵ as well as diminished ischemic resilience of the affected tissue.^{26,27} In addition, WMLs are a known risk factor for poststroke depression,²⁸ cognitive impairment,^{5,29} and ischemic stroke recurrence,^{5,30} which may all contribute to a limited overall recovery potential. Just about one-quarter of the patients with moderate-to-severe WML in our study reached functional independence 90 days poststroke—a finding comparable to 3 recent reports that studied WML, using either baseline NCCT^{10,31} or magnetic resonance imaging,¹¹ in the context of EVT. Similar to our study, WML was an independent predictor of poorer functional outcome in these studies, which strongly suggests that patients with substantial WML have an inherent biological vulnerability to impaired recovery after ischemic stroke. Despite the poorer outcomes of patients with a higher burden of WML, these patients still appear to benefit from EVT, as a recent analysis of the MR CLEAN trial found no effect modification of EVT benefit by WML.³² We, therefore, do not recommend taking WML into account in treatment decisions for EVT. Nevertheless, information on WML could help to set realistic recovery expectations after EVT.

In our study, the relation between WML and clinical outcome was already evident at 24 hours, with a lower

proportion of patients with moderate-to-severe WML experiencing early neurological recovery. This finding is in line with a recent retrospective analysis of 273 patients³³ but contrasts with a prospective American study of 389 patients¹⁰ treated with mechanical thrombectomy. In the latter study, early neurological recovery was achieved in 45% and 44% of patients with none-to-mild WML and moderate-to-severe WML, respectively.¹⁰ In our cohort, the overall rate of early neurological recovery was lower (38%) and as low as 30% in patients with moderate-to-severe WML. In contrast with our cohort, the American study excluded patients with preexisting functional disability, which could account for the observed differences in early recovery.

In line with previous reports, we found that the relationship of WML with functional outcome was independent of whether successful reperfusion was achieved.^{10,11,34,35} Furthermore, we showed that the relationship of WML with functional outcome was independent of time from symptom onset to reperfusion. Hypothetically, severe WML may shorten the onset-to-reperfusion window for a favorable outcome through faster conversion of salvageable penumbra to infarct core.²⁷ WML indeed modified the association between time to reperfusion and functional outcome in an American cohort of 144 patients with successful reperfusion after EVT.³⁶ We did not find such modification, which suggests that keeping onset-to-reperfusion times as short as possible is similarly beneficial across WML grades. In the American cohort, patients with moderate-to-severe WML had a shorter onset-to-reperfusion time.

WML may be associated with endothelial dysfunction and disruption of the blood-brain barrier, rendering patients vulnerable to bleeding complications.³⁷ Previously, WMLs were shown to be associated with hemorrhagic transformation of ischemic tissue and sICH after intravenous thrombolysis with alteplase,^{8,9} raising concerns about the safety of this treatment before EVT in patients with severe WML. sICH occurred in 5.9% of the patients in our cohort of patients treated with EVT,

Table. Outcomes and Associations According to the Degree of WMLs

	No WML (n=1850)	Mild WML (n=608)	Moderate-to-severe WML (n=588)	P value
Clinical outcomes				
90-d mRS, median (IQR)*	3 (1–4)	4 (2–6)	5 (3–6)	P_{diff} <0.001
acOR (95% CI), n=3180	Reference	1.34 (1.13–1.60)	1.67 (1.39–2.01)	P_{trend} <0.001
acOR (95% CI), † n=2840	Reference	1.45 (1.21–1.73)	1.78 (1.48–2.15)	P_{trend} <0.001
Mortality, n (%)	351/1722 (20.4)	215/563 (38.2)	249/555 (44.9)	P_{diff} <0.001
aOR (95% CI), n=3180	Reference	1.45 (1.17–1.79)	1.53 (1.23–1.90)	P_{trend} <0.001
aOR (95% CI), † n=2840	Reference	1.56 (1.25–1.95)	1.65 (1.32–2.08)	P_{trend} <0.001
Futile recanalization, n (%)	461/1072 (43.0)	176/315 (55.9)	223/316 (70.6)	P_{diff} <0.001
aOR (95% CI), n=1767	Reference	1.07 (0.82–1.41)	1.74 (1.30–2.33)	P_{trend} <0.001
aOR (95% CI), † n=1703	Reference	1.11 (0.85–1.46)	1.80 (1.34–2.41)	P_{trend} <0.001
ENI, n (%)	704/1677 (42.0)	187/535 (35.0)	152/513 (29.6)	P_{diff} <0.001
aOR (95% CI), n=3180	Reference	0.88 (0.72–1.07)	0.81 (0.65–1.01)	P_{trend} 0.041
aOR (95% CI), † n=2725	Reference	0.83 (0.68–1.03)	0.70 (0.56–0.88)	P_{trend} 0.002
Radiographic outcomes				
Collateral status, n (%)				P_{diff} 0.018
Grade 0	111/1755 (6.3)	33/580 (5.7)	35/556 (6.3)	
Grade 1	589/1755 (33.6)	229/580 (39.5)	225/556 (40.5)	
Grade 2	693/1755 (39.5)	224/580 (38.6)	201/556 (36.2)	
Grade 3	362/1755 (20.6)	94/580 (16.2)	95/556 (17.1)	
acOR (95% CI), n=3180	Reference	0.91 (0.76–1.08)	0.90 (0.75–1.08)	P_{trend} 0.206
acOR (95% CI), † n=2891	Reference	0.89 (0.75–1.07)	0.90 (0.74–1.08)	P_{trend} 0.192
slCH, n (%)	103/1850 (5.6)	36/608 (5.9)	39/588 (6.6)	P_{diff} 0.629
aOR (95% CI), n=3180	Reference	1.01 (0.69–1.50)	1.05 (0.72–1.55)	P_{trend} 0.801
aOR (95% CI), † n=3046	Reference	1.04 (0.70–1.54)	1.08 (0.73–1.59)	P_{trend} 0.701
Successful reperfusion, n (%)	1159/1812 (64.0)	350/589 (59.4)	339/569 (59.6)	P_{diff} 0.050
aOR (95% CI), n=3180	Reference	0.85 (0.70–1.03)	0.86 (0.71–1.04)	P_{trend} 0.064
aOR (95% CI), † n=3046	Reference	0.83 (0.69–1.01)	0.84 (0.69–1.02)	P_{trend} 0.037

P_{trend} indicates P value for linear trend across WML groups in multivariable models; P_{diff} indicates P value for difference between WML groups, using Kruskal-Wallis or χ^2 tests. acOR indicates adjusted common odds ratio; aOR, adjusted odds ratio; ENI, early neurological improvement; IQR, interquartile range; mRS, modified Rankin Scale; slCH, symptomatic intracranial hemorrhage; and WML, white matter lesion.

*Number of patients with missing mRS score: 128 (6.9%) patients with no WML, 45 (7.4%) patients with mild WML, and 33 (7.6%) patients with moderate-to-severe WML.

†Sensitivity analyses, including only patients with known WML grade and outcome of interest.

and WMLs were unrelated to this complication, which is in line with previous reports.^{10–13} Moreover, WML burden was not associated with an increase in the odds of slCH in the subset of patients who received intravenous thrombolysis before EVT.

We found no independent relationship between WML grade and collateral recruitment. This suggests that extensive WML and poor collateral recruitment are independent markers of brain frailty, resulting from shared risk factors such as age and history of hypertension. In 3 previous studies of patients treated with EVT, increasing burden of WML was independently associated with poor collateral recruitment at baseline,^{38–40} but 3 other studies showed no such relationship.^{12,41,42} The inconclusive results may be due to differences in imaging modalities or grading scales for both WML and collateral status.

Future studies require more refined, rater-independent measurements of these imaging markers.

Several strengths of our study are worth mentioning. The large sample size and detailed dataset allowed us to examine various clinical and radiographic outcomes and reduce the risk of selection bias and confounding. Selection bias was further limited by inclusion of patients with functional disability at baseline. The fact that the included patients were all treated in routine clinical practice, rather than in the context of a trial, improves generalizability. However, we must also address the limitation that we used NCCT, rather than magnetic resonance imaging, to grade WML. Although NCCT may be inferior in terms of measurement precision, and the use of visual grading increases the risk of phenotype misclassifications, NCCT has the important advantage of its wide availability and

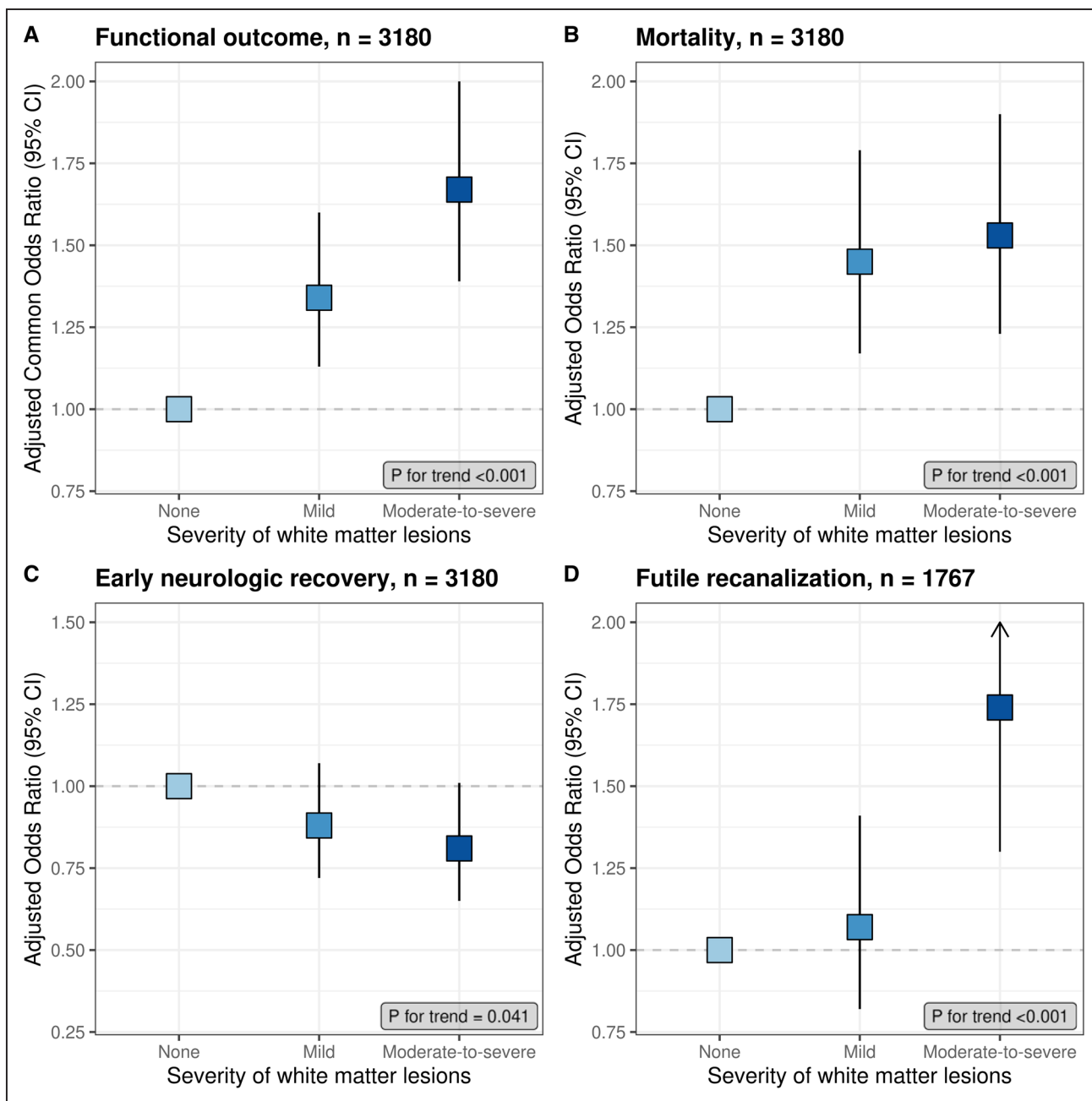


Figure 3. Associations of white matter lesions with outcomes.

Adjusted associations of increasing degree of white matter lesions (WMLs) with functional outcome (A), mortality (B), early neurological recovery (C), and futile recanalization (D). Squares indicate adjusted (common) odds ratio; vertical lines indicate 95% CI. As the absence of WML is the reference category in all models, the adjusted (common) odds ratio is 1.00.

routine use in the setting of acute stroke. Moreover, substantial agreement between magnetic resonance imaging and NCCT-based visual grading scales for WML has been demonstrated previously.^{14,43} Second, we did not include patients who were treated beyond 6.5 hours after symptom onset, and our results are, therefore, not generalizable to those patients.

In this MR CLEAN Registry substudy, we demonstrate associations of an increasing burden of WML with poorer clinical outcomes but not with risk of sICH or probability of successful reperfusion. In conclusion, patients with

moderate-to-severe WML are at higher risk for poor clinical outcomes but may still benefit from EVT.

ARTICLE INFORMATION

Received October 29, 2020; final revision received January 25, 2021; accepted March 24, 2021.

Affiliations

Department of Neurology and Neurosurgery, Brain Center, University Medical Center Utrecht, the Netherlands (S.M.U.V., H.B.v.d.W.). Department of Radiology, Maastricht University Medical Center Plus, the Netherlands (A.A.P.). School for Mental Health and Sciences, University of Maastricht, the Netherlands (A.A.P.).

Department of Neurology, Haaglanden Medical Center, the Hague, the Netherlands (I.R.v.d.W.). Department of Neurology, Leiden University Medical Center, the Netherlands (I.R.v.d.W.). Department of Radiology, St. Antonius Hospital, Nieuwegein, the Netherlands (J.A.V.). Department of Public Health (H.F.L.) and Department of Neurology (D.W.J.D.), Erasmus MC, University Medical Center, Rotterdam, the Netherlands. Department of Radiology, Medical Imaging Center, University Medical Center Groningen, the Netherlands (R.P.H.B.). Department of Neurology, Rijnstate, Arnhem, the Netherlands (J.H.). Department of Radiology and Nuclear Medicine, Amsterdam University Medical Center, University of Amsterdam, the Netherlands (C.B.M.).

Acknowledgments

We would like to thank the MR CLEAN Registry (Multicenter Randomized Controlled Trial of Endovascular Treatment for Acute Ischaemic Stroke in the Netherlands) investigators; a complete list of the MR CLEAN Registry investigators is provided in the [Data Supplement](#). Dr Uniken Venema contributed to the study concept, statistical analysis, interpretation of the results, and drafting of the manuscript. Dr Lingsma contributed to statistical advice and critical revision of the manuscript. Drs Postma, van den Wijngaard, Albert Vos, Bokkers, Hofmeijer, Dippel, and Majoie contributed to the critical revision of the manuscript. Dr van der Worp contributed to the study concept, interpretation of the results, and critical revision of the manuscript.

Sources of Funding

The MR CLEAN Registry (Multicenter Randomized Controlled Trial of Endovascular Treatment for Acute Ischaemic Stroke in the Netherlands) was partly funded by the Toegepast Wetenschappelijk Instituut voor Neuromodulatie Foundation, Erasmus MC Medical Center, Maastricht University Medical Center, and Academic Medical Center Amsterdam. Dr Uniken Venema performed this work as coordinating investigator of the trial MR ASAP (Multicenter Randomised Trial of Acute Stroke Treatment in the Ambulance With a Nitroglycerin Patch), which is part of the CONTRAST consortium (Collaboration for New Treatments of Acute Stroke) and is funded by the Netherlands Cardiovascular Research Initiative, an initiative of the Dutch Heart Foundation, and by Stryker Corporation.

Disclosures

Dr van der Worp has received speaker's fees from Bayer and Boehringer Ingelheim; served as a consultant to Bayer, Boehringer Ingelheim, and LivaNova; and reports grants from Stryker. Dr Postma reports institutional grant from Siemens Healthcare and Bayer. Dr Majoie received funds from the Toegepast Wetenschappelijk Instituut voor Neuromodulatie Foundation (related to this project, paid to institution) and from Cardiovasculair Onderzoek Nederland (CVON)/Dutch Heart Foundation, Stryker, European Commission, and Health Evaluation Program Netherlands (unrelated; all paid to institution) and is shareholder of Nico.lab—a company that focuses on the use of artificial intelligence for medical imaging analysis. Dr Dippel reports that Erasmus MC received grants from Dutch Heart Foundation, Dutch Brain Foundation, The Netherlands Organisation for Health Research and Development, Health Holland Top Sector Life Sciences and Health, Stryker European Operations BV, Thrombolytic Science, LLC, Penumbra, Medtronic, and Cerenovus for new trials in acute stroke treatment. The other authors report no conflicts.

Supplemental Materials

Online Tables I and II

Online Figures I and II

MR CLEAN Registry Investigators—Group Authors

REFERENCES

- Goyal M, Menon BK, van Zwam WH, Dippel DW, Mitchell PJ, Demchuk AM, Dávalos A, Majoie CB, van der Lugt A, de Miquel MA, et al; HERMES Collaborators. Endovascular thrombectomy after large-vessel ischaemic stroke: a meta-analysis of individual patient data from five randomised trials. *Lancet*. 2016;387:1723–1731. doi: 10.1016/S0140-6736(16)00163-X
- Wardlaw JM, Sandercock P, Cohen G, Farrall A, Lindley RI, von Kummer R, von Heijne A, Bradey N, Peeters A, Cala L, et al. Association between brain imaging signs, early and late outcomes, and response to intravenous alteplase after acute ischaemic stroke in the third international stroke trial (IST-3): secondary analysis of a randomised controlled trial. *Lancet Neurol*. 2015;14:485–496.
- Román LS, Menon BK, Blasco J, Hernández-Pérez M, Dávalos A, Majoie CBLM, Campbell BCV, Guillemin F, Lingsma H, Anxionnat R, et al; HERMES Collaborators. Imaging features and safety and efficacy of endovascular

stroke treatment: a meta-analysis of individual patient-level data. *Lancet Neuro*. 2018;17:895–904. doi: 10.1016/S1474-4422(18)30242-4

- Pantoni L. Cerebral small vessel disease: from pathogenesis and clinical characteristics to therapeutic challenges. *Lancet Neurol*. 2010;9:689–701. doi: 10.1016/S1474-4422(10)70104-6
- Georgakis MK, Dering M, Wardlaw JM, Dichgans M. WMH and long-term outcomes in ischemic stroke: a systematic review and meta-analysis. *Neurology*. 2019;92:e1298–e1308. doi: 10.1212/WNL.0000000000007142
- Ryu WS, Woo SH, Schellingerhout D, Jang MU, Park KJ, Hong KS, Jeong SW, Na JY, Cho KH, Kim JT, et al. Stroke outcomes are worse with larger leukoaraiosis volumes. *Brain*. 2017;140:158–170. doi: 10.1093/brain/aww259
- Sato S, Delcourt C, Heeley E, Arima H, Zhang S, Al-Shahi Salman R, Stapf C, Woo D, Flaherty ML, Vagal A, et al; INTERACT2 Investigators. Significance of cerebral small-vessel disease in acute intracerebral hemorrhage. *Stroke*. 2016;47:701–707. doi: 10.1161/STROKEAHA.115.012147
- Charidimou A, Pasi M, Fiorelli M, Shams S, von Kummer R, Pantoni L, Rost N. Leukoaraiosis, cerebral hemorrhage, and outcome after intravenous thrombolysis for acute ischemic stroke: a meta-analysis (v1). *Stroke*. 2016;47:2364–2372. doi: 10.1161/STROKEAHA.116.014096
- Kongbunkiat K, Wilson D, Kasemsap N, Tiamkao S, Jichi F, Palumbo V, Hill MD, Buchan AM, Jung S, Mattle HP, et al. Leukoaraiosis, intracerebral hemorrhage, and functional outcome after acute stroke thrombolysis. *Neurology*. 2017;88:638–645. doi: 10.1212/WNL.0000000000003605
- Mistry EA, Mistry AM, Mehta T, Arora N, Starosciak AK, La Rosa FDLR, Siegler JE, Kasner SE, Chitale R, Fusco M, et al. White matter disease and outcomes of mechanical thrombectomy for acute ischemic stroke. *Am J Neuroradiol*. 2020;1–6.
- Boulouis G, Bricout N, Benhassen W, Ferrigno M, Turc G, Bretzner M, Benzakoun J, Seners P, Personnic T, Legrand L, et al. White matter hyperintensity burden in patients with ischemic stroke treated with thrombectomy. *Neurology*. 2019;93:e1498–e1506. doi: 10.1212/WNL.0000000000008317
- Mechtouff L, Nighoghossian N, Amaz C, Buisson M, Berthezène Y, Derex L, Ong E, Eker OF, Cho TH. White matter burden does not influence the outcome of mechanical thrombectomy. *J Neurol*. 2020;267:618–624. doi: 10.1007/s00415-019-09624-2
- Atchaneeyasakul K, Leslie-Mazwi T, Donahue K, Giese AK, Rost NS. White matter hyperintensity volume and outcome of mechanical thrombectomy with stentriever in acute ischemic stroke. *Stroke*. 2017;48:2892–2894. doi: 10.1161/STROKEAHA.117.018653
- Ferguson KJ, Cvorov V, MacLulich AMJ, Shenkin SD, Sandercock PAG, Sakka E, Wardlaw JM. Visual rating scales of white matter hyperintensities and atrophy: comparison of computed tomography and magnetic resonance imaging. *J Stroke Cerebrovasc Dis*. 2018;27:1815–1821. doi: 10.1016/j.jstrokecerebrovasdis.2018.02.028
- Jansen IGH, Mulder MJHL, Goldhoorn RB; MR CLEAN Registry Investigators. Endovascular treatment for acute ischaemic stroke in routine clinical practice: prospective, observational cohort study (MR CLEAN Registry). *BMJ*. 2018;360:k949. doi: 10.1136/bmj.k949
- van Swieten JC, Koustaal PJ, Visser MC, Schouten HJ, van Gijn J. Interobserver agreement for the assessment of handicap in stroke patients. *Stroke*. 1988;19:604–607. doi: 10.1161/01.str.19.5.604
- Kapeller P, Barber R, Vermeulen RJ, Adèr H, Scheltens P, Freidl W, Almkvist O, Moretti M, del Ser T, Vaghfeldt P, et al; European Task Force of Age Related White Matter Changes. Visual rating of age-related white matter changes on magnetic resonance imaging: scale comparison, interrater agreement, and correlations with quantitative measurements. *Stroke*. 2003;34:441–445. doi: 10.1161/01.str.0000049766.26453.e9
- Rudilosso S, San Román L, Blasco J, Hernández-Pérez M, Urrea X, Chamorro Á. Evaluation of white matter hypodensities on computed tomography in stroke patients using the Fazekas score. *Clin Imaging*. 2017;46:24–27. doi: 10.1016/j.clinimag.2017.06.011
- Tan IY, Demchuk AM, Hopyan J, Zhang L, Gladstone D, Wong K, Martin M, Symons SP, Fox AJ, Aviv RI. CT angiography clot burden score and collateral score: correlation with clinical and radiologic outcomes in acute middle cerebral artery infarct. *AJNR Am J Neuroradiol*. 2009;30:525–531. doi: 10.3174/ajnr.A1408
- Berkhemer OA, Jansen IG, Beumer D, Fransen PS, van den Berg LA, Yoo AJ, Lingsma HF, Sprengers ME, Jenniskens SF, Lycklama À Nijeholt GJ, et al; MR CLEAN Investigators. Collateral status on baseline computed tomographic angiography and intra-arterial treatment effect in patients with proximal anterior circulation stroke. *Stroke*. 2016;47:768–776. doi: 10.1161/STROKEAHA.115.011788
- Noser EA, Shaltoni HM, Hall CE, Alexandrov AV, Garami Z, Cacayorin ED, Song JK, Grotta JC, Campbell MS 3rd. Aggressive mechanical clot

- disruption: a safe adjunct to thrombolytic therapy in acute stroke? *Stroke*. 2005;36:292–296. doi: 10.1161/01.STR.0000152331.93770.18
22. Brott T, Adams HP Jr, Olinger CP, Marler JR, Barsan WG, Biller J, Spilker J, Holleran R, Eberle R, Hertzberg V. Measurements of acute cerebral infarction: a clinical examination scale. *Stroke*. 1989;20:864–870. doi: 10.1161/01.str.20.7.864
 23. von Kummer R, Broderick JP, Campbell BC, Demchuk A, Goyal M, Hill MD, Treurniet KM, Majoie CB, Marquering HA, Mazya MV, et al. The heidelberg bleeding classification: classification of bleeding events after ischemic stroke and reperfusion therapy. *Stroke*. 2015;46:2981–2986. doi: 10.1161/STROKEAHA.115.010049
 24. Shrier I, Platt RW. Reducing bias through directed acyclic graphs. *BMC Med Res Methodol*. 2008;8:70. doi: 10.1186/1471-2288-8-70
 25. Lawrence AJ, Chung AW, Morris RG, Markus HS, Barrick TR. Structural network efficiency is associated with cognitive impairment in small-vessel disease. *Neurology*. 2014;83:304–311. doi: 10.1212/WNL.0000000000000612
 26. Henninger N, Khan MA, Zhang J, Moonis M, Goddeau RP Jr. Leukoaraiosis predicts cortical infarct volume after distal middle cerebral artery occlusion. *Stroke*. 2014;45:689–695. doi: 10.1161/STROKEAHA.113.002855
 27. Ay H, Arsava EM, Rosand J, Furie KL, Singhal AB, Schaefer PW, Wu O, Gonzalez RG, Koroshetz WJ, Sorensen AG. Severity of leukoaraiosis and susceptibility to infarct growth in acute stroke. *Stroke*. 2008;39:1409–1413. doi: 10.1161/STROKEAHA.107.501932
 28. Liang Y, Chen YK, Mok VCT, Wang DF, Ungvari GS, Chu WCW, Kang HJ, Tang WK. Cerebral small vessel disease burden is associated with Poststroke depressive symptoms: a 15-month prospective study. *Front Aging Neurosci*. 2018;10:46.
 29. Shi L, Zhao L, Yeung FK, Wong SY, Chan RKT, Tse MF, Chan SC, Kwong YC, Li KC, Liu K, et al. Mapping the contribution and strategic distribution patterns of neuroimaging features of small vessel disease in poststroke cognitive impairment. *J Neurol Neurosurg Psychiatry*. 2018;89:918–926. doi: 10.1136/jnnp-2017-317817
 30. Ryu WS, Schellingerhout D, Hong KS, Jeong SW, Jang MU, Park MS, Choi KH, Kim JT, Kim BJ, Lee J, et al. White matter hyperintensity load on stroke recurrence and mortality at 1 year after ischemic stroke. *Neurology*. 2019;93:e578–e589. doi: 10.1212/WNL.00000000000007896
 31. Guo Y, Zi W, Wan Y, Zhang S, Sun B, Shang X, Li S, Bai Y, Li Z, Zheng D, et al. Leukoaraiosis severity and outcomes after mechanical thrombectomy with stent-retriever devices in acute ischemic stroke. *J Neurointerv Surg*. 2019;11:137–140. doi: 10.1136/neurintsurg-2018-014018
 32. Luijten SPR, Bos D, Compagne KCJ, Wolff L, Majoie CBLM, Roos YBWEM, van Zwam WH, van Oostenbrugge RJ, Dippel DWJ, van der Lugt A, et al; MR CLEAN Trial Investigators. Association of white matter lesions and outcome after endovascular stroke treatment. *Neurology*. 2021;96:e333–e342. doi: 10.1212/WNL.0000000000010994
 33. Guo Y, Zhang S, Li M, Sun B, Shang X, Li S, Bai Y, Li Z, Zi W, Liu X. Leukoaraiosis and earlier neurological outcome after mechanical thrombectomy in acute ischemic stroke. *J Neuroradiol*. 2020;47:428–432.
 34. Gilberti N, Gamba M, Premi E, Costa A, Vergani V, Delrio I, Spezi R, Dikran M, Frigerio M, Gasparotti R, et al. Leukoaraiosis is a predictor of futile recanalization in acute ischemic stroke. *J Neurol*. 2017;264:448–452. doi: 10.1007/s00415-016-8366-y
 35. Tateishi Y, Wisco D, Aoki J, George P, Katzan I, Toth G, Hui F, Hussain MS, Uchino K. Large deep white matter lesions may predict futile recanalization in endovascular therapy for acute ischemic stroke. *Interv Neurol*. 2015;3:48–55. doi: 10.1159/000369835
 36. Mikati AG, Mandelbaum M, Sapnar S, Puri AS, Silver B, Goddeau RP Jr, Haussen DC, Moonis M, Jun-O'Connell AH, Henninger N. Impact of leukoaraiosis severity on the association of time to successful reperfusion with 90-day functional outcome after large vessel occlusion stroke. *Transl Stroke Res*. 2020;11:39–49. doi: 10.1007/s12975-019-00703-0
 37. del Zoppo GJ, von Kummer R, Hamann GF. Ischaemic damage of brain microvessels: inherent risks for thrombolytic treatment in stroke. *J Neurol Neurosurg Psychiatry*. 1998;65:1–9. doi: 10.1136/jnnp.65.1.1
 38. Lin MP, Brott TG, Liebeskind DS, Meschia JF, Sam K, Gottesman RF. Collateral recruitment is impaired by cerebral small vessel disease. *Stroke*. 2020;51:1404–1410.
 39. Giurgiutiu DV, Yoo AJ, Fitzpatrick K, Chaudhry Z, Leslie-Mazwi T, Schwamm LH, Rost NS. Severity of leukoaraiosis, leptomeningeal collaterals, and clinical outcomes after intra-arterial therapy in patients with acute ischemic stroke. *J Neurointerv Surg*. 2015;7:326–330. doi: 10.1136/neurintsurg-2013-011083
 40. Mark I, Seyedsaadat SM, Benson JC, Kallmes DF, Rabinstein AA, Brinjikji W. Leukoaraiosis and collateral blood flow in stroke patients with anterior circulation large vessel occlusion. *J Neurointerv Surg*. 2020;12:942–945. doi: 10.1136/neurintsurg-2019-015652
 41. Sanossian N, Ovbiagele B, Saver JL, Alger JR, Starkman S, Kim D, Ohanian AG, Buck BH, Ali LK, Duckwiler GR, et al. Leukoaraiosis and collaterals in acute ischemic stroke. *J Neuroimaging*. 2011;21:232–235. doi: 10.1111/j.1552-6569.2010.00512.x
 42. Eker OF, Rasclé L, Cho TH, Mechtouff L, Derex L, Ong E, Berthezene Y, Nighoghossian N. Does small vessel disease burden impact collateral circulation in ischemic stroke treated by mechanical thrombectomy? *Stroke*. 2019;50:1582–1585. doi: 10.1161/STROKEAHA.119.025608
 43. Wattjes MP, Henneman WJ, van der Flier WM, de Vries O, Träber F, Geurts JJ, Scheltens P, Vrenken H, Barkhof F. Diagnostic imaging of patients in a memory clinic: comparison of MR imaging and 64-detector row CT. *Radiology*. 2009;253:174–183. doi: 10.1148/radiol.2531082262