

University of Groningen

Progression of Contralateral Hearing Loss in Patients With Sporadic Vestibular Schwannoma

Early, Samuel; Rinnooy Kan, Charlotte E.; Eggink, Maura; Frijns, Johan H. M.; Stankovic, Konstantina M.

Published in:
Frontiers in Neurology

DOI:
[10.3389/fneur.2020.00796](https://doi.org/10.3389/fneur.2020.00796)

IMPORTANT NOTE: You are advised to consult the publisher's version (publisher's PDF) if you wish to cite from it. Please check the document version below.

Document Version
Publisher's PDF, also known as Version of record

Publication date:
2020

[Link to publication in University of Groningen/UMCG research database](#)

Citation for published version (APA):

Early, S., Rinnooy Kan, C. E., Eggink, M., Frijns, J. H. M., & Stankovic, K. M. (2020). Progression of Contralateral Hearing Loss in Patients With Sporadic Vestibular Schwannoma. *Frontiers in Neurology*, 11, [796]. <https://doi.org/10.3389/fneur.2020.00796>

Copyright

Other than for strictly personal use, it is not permitted to download or to forward/distribute the text or part of it without the consent of the author(s) and/or copyright holder(s), unless the work is under an open content license (like Creative Commons).

The publication may also be distributed here under the terms of Article 25fa of the Dutch Copyright Act, indicated by the "Taverne" license. More information can be found on the University of Groningen website: <https://www.rug.nl/library/open-access/self-archiving-pure/taverne-amendment>.

Take-down policy

If you believe that this document breaches copyright please contact us providing details, and we will remove access to the work immediately and investigate your claim.

Downloaded from the University of Groningen/UMCG research database (Pure): <http://www.rug.nl/research/portal>. For technical reasons the number of authors shown on this cover page is limited to 10 maximum.



Progression of Contralateral Hearing Loss in Patients With Sporadic Vestibular Schwannoma

Samuel Early^{1,2,3†}, Charlotte E. Rinnooy Kan^{1,2,4†}, Maura Eggink^{1,2,5}, Johan H. M. Frijns^{4,6,7} and Konstantina M. Stankovic^{1,2,8,9*}

¹ Eaton-Peabody Laboratories, Department of Otolaryngology—Head and Neck Surgery, Massachusetts Eye and Ear, Boston, MA, United States, ² Department of Otolaryngology—Head and Neck Surgery, Harvard Medical School, Boston, MA, United States, ³ San Diego School of Medicine, University of California, San Diego, San Diego, CA, United States, ⁴ Leiden University Medical Center, Leiden, Netherlands, ⁵ University Medical Center Groningen, Groningen, Netherlands, ⁶ Department of Otolaryngology—Head and Neck Surgery, Leiden University Medical Center, Leiden, Netherlands, ⁷ Leiden Institute for Brain and Cognition, Leiden, Netherlands, ⁸ Program in Speech and Hearing Bioscience and Technology, Harvard Medical School, Boston, MA, United States, ⁹ Harvard Program in Therapeutic Science, Harvard Medical School, Boston, MA, United States

OPEN ACCESS

Edited by:

Stefan K. Plontke,
Martin Luther University of
Halle-Wittenberg, Germany

Reviewed by:

Sung Huhn Kim,
Yonsei University, South Korea
Maurizio Barbara,
Sapienza University of Rome, Italy

*Correspondence:

Konstantina M. Stankovic
konstantina_stankovic@
meei.harvard.edu

†These authors have contributed
equally to this work

Specialty section:

This article was submitted to
Neuro-Otology,
a section of the journal
Frontiers in Neurology

Received: 08 April 2020

Accepted: 25 June 2020

Published: 14 August 2020

Citation:

Early S, Rinnooy Kan CE, Eggink M,
Frijns JHM and Stankovic KM (2020)
Progression of Contralateral Hearing
Loss in Patients With Sporadic
Vestibular Schwannoma.
Front. Neurol. 11:796.
doi: 10.3389/fneur.2020.00796

Background and Introduction: Vestibular schwannomas (VSs) are the most common tumors of the cerebellopontine angle, typically presenting unilaterally with ipsilateral sensorineural hearing loss (SNHL). The mechanism of tumor-induced hearing loss has recently been shown to be related to secreted tumor factors, in addition to mechanical compression of the adjacent auditory nerve, and these factors may percolate through CSF or blood to affect contralateral hearing as well.

Methods: This is a retrospective study of medical records for patients treated for VS at Mass Eye and Ear from January 1994 through October 2018. Included patients had unilateral VS and sequential audiometry allowing for longitudinal assessment of hearing over time. Mass Eye and Ear's audiology database was used to select age- and sex-matched case controls, also with sequential audiometry, from the non-VS population. Subgroup analysis was performed by age, sex, baseline hearing, and tumor size at initial diagnosis. Hearing loss progression was performed using Kaplan-Meier analysis to account for variable follow-up times.

Results: A total of 661 patients were identified with VS and sequential audiometry. The population was predominantly female vs. male (368 vs. 293, $p = 0.0035$), driven primarily by younger patients with Koos 4 tumors (76 female vs. 49 male, $p = 0.016$). Patients with normal baseline hearing bilaterally ($N = 241$) demonstrated no significant difference in hearing loss progression in VS-contralateral vs. control ears. Patients with abnormal baseline VS-ipsilateral hearing ($N = 190$), however, demonstrated significantly higher likelihood of reaching moderate SNHL in VS-contralateral ears. Subgroup analysis by age, sex, and baseline tumor size did not yield any subgroup-specific trends for hearing loss progression.

Discussion and Conclusion: This is the largest study to date tracking long-term bilateral hearing outcomes in patients with VS, and demonstrates that, in patients with abnormal hearing in the VS-ipsilateral ear, there exists a long-term risk of progression to moderate hearing loss in the contralateral ear as well. Combined with the absence

of significant changes in word understanding in the affected ears, these findings may provide clues to the nature of tumor-secreted factors involved in VS-associated hearing loss. Female predominance within the VS patient population is confirmed, driven mostly by younger female patients with Koos 4 tumors.

Keywords: vestibular schwannoma, hearing loss, contralateral, secreted factors, outcomes

INTRODUCTION

Vestibular schwannomas (VSs) are Schwann cell tumors that typically originate from the nerve sheath of a vestibular branch of the eighth cranial nerve within the internal auditory canal (IAC), and in 95% of patients cause sensorineural hearing loss (SNHL) (1, 2). As these tumors grow, they extend into the cerebellopontine angle (CPA) where they account for 80% of tumors in that location (3). The incidence of VSs ranges from one out of 10,000 for unilateral and sporadic VS to 1 per 30,000 for bilateral VSs, occurring in association with neurofibromatosis type 2 syndrome (4, 5). In addition to SNHL, VSs can cause tinnitus, balance problems, and cranial neuropathies such as facial paralysis, and as such have the potential to severely affect a patient's quality of life despite their nominally non-malignant nature. In large tumors that are proximal to the brainstem, VS tumors can be associated with life threatening complications of brainstem compression and hydrocephalus (3, 6). To date, no drug has been FDA approved to treat VS, limiting management options for VS to watchful waiting, surgery and radiotherapy (7). Both surgery and radiotherapy are associated with significant risks, including loss of hearing and facial nerve paralysis, with as many as 28% of patients experiencing at least one of these complications (8).

Despite VS being an important cause of human SNHL, the underlying pathophysiological mechanisms causing SNHL in patients with VS tumors are still incompletely understood (6). Early hypotheses that VSs cause SNHL by gradually increasing mechanical compression to the adjacent auditory nerve do not explain the lack of correlation between either radiographic tumor size or tumor extension into the IAC with changes in conventional audiometric criteria (9, 10). Additionally, audiometric threshold shifts are observed in patients without radiographic tumor growth (9). These clinical observations suggest additional explanations for the pathophysiology of SNHL, beyond only mechanical compression of adjacent structures. Recent studies have revealed new insights about the capacity of secreted factors, such as tumor necrosis factor alpha (TNF α), and extracellular vesicles (EVs) from human VSs to cause cochlear damage (11–16). The greater the severity of SNHL associated with a VS tumor, the greater the degree of hair cell loss and neuronal fiber disorganization seen in cochlear explants exposed to tumor secretions (11, 13). In addition, the degree of SNHL tends to be greater in patients whose tumors overexpress the NLRP3 inflammasome and the associated ototoxic molecules such as IL1 β (12). These findings suggest secreted mechanisms for SNHL in patients with VS, independent of mechanical compression of the cochlear nerve.

Secretions produced by sporadic VS tumors could have the potential to reach the contralateral ear by percolating through cerebrospinal fluid (CSF) or blood. Because the vast majority of VS patients suffer from SNHL in the ipsilateral ear, any potential effect of tumor secretions on contralateral hearing is of high clinical relevance. Until now, no study has been done with a large enough patient population, incorporating sufficiently comprehensive audiometric data, to investigate the possible effect of sporadic VS on hearing in the contralateral ear. This study examines whether in patients with unilateral sporadic VS, the progression of SNHL in the contralateral ear is faster than would be otherwise expected for unrelated age-related hearing loss in the general population.

MATERIALS AND METHODS

A retrospective chart review was performed of patients diagnosed with VS from January 1994 to October 2018 at Massachusetts Eye and Ear. Institutional Review Board (IRB) approval was obtained from the Human Studies Committee at Massachusetts Eye and Ear and Massachusetts General Hospital (IRB 16-103H).

Patient Selection

Review of electronic medical and billing records at Mass Eye and Ear identified 1009 patients aged 18 years and older with diagnosis codes consistent with VS: 225.1 (ICD-9) and D33.3 (ICD-10), and who additionally had undergone sequential audiometry at Mass Eye and Ear, in order to permit analysis of longitudinal changes in hearing. Patient charts and imaging were reviewed to confirm absence of bilateral VS or three or more total schwannomas or meningiomas, to avoid inclusion of any patients with NF2 (**Figure 1**). Patients were additionally excluded if they had undergone surgery or radiation therapy before first available audiometry, or if they had pre-existing profound VS-contralateral hearing loss or deafness at time of earliest audiometry.

After defining the VS study population, an age- and sex-matched case control population was selected at a 3:1 ratio from the general patient population at Mass Eye and Ear; patients in the case control population were required to have a diagnosis code of SNHL or mixed hearing loss and sequential audiometry performed at Mass Eye and Ear, without any other known otologic disease and with normal hearing at baseline in at least one ear. When >3 case control candidates were available, priority for inclusion was given to patients for whom frequency of audiometric testing most closely matched their assigned VS patient. All case control patients with significant change in hearing for either ear at any time during follow-up (increase

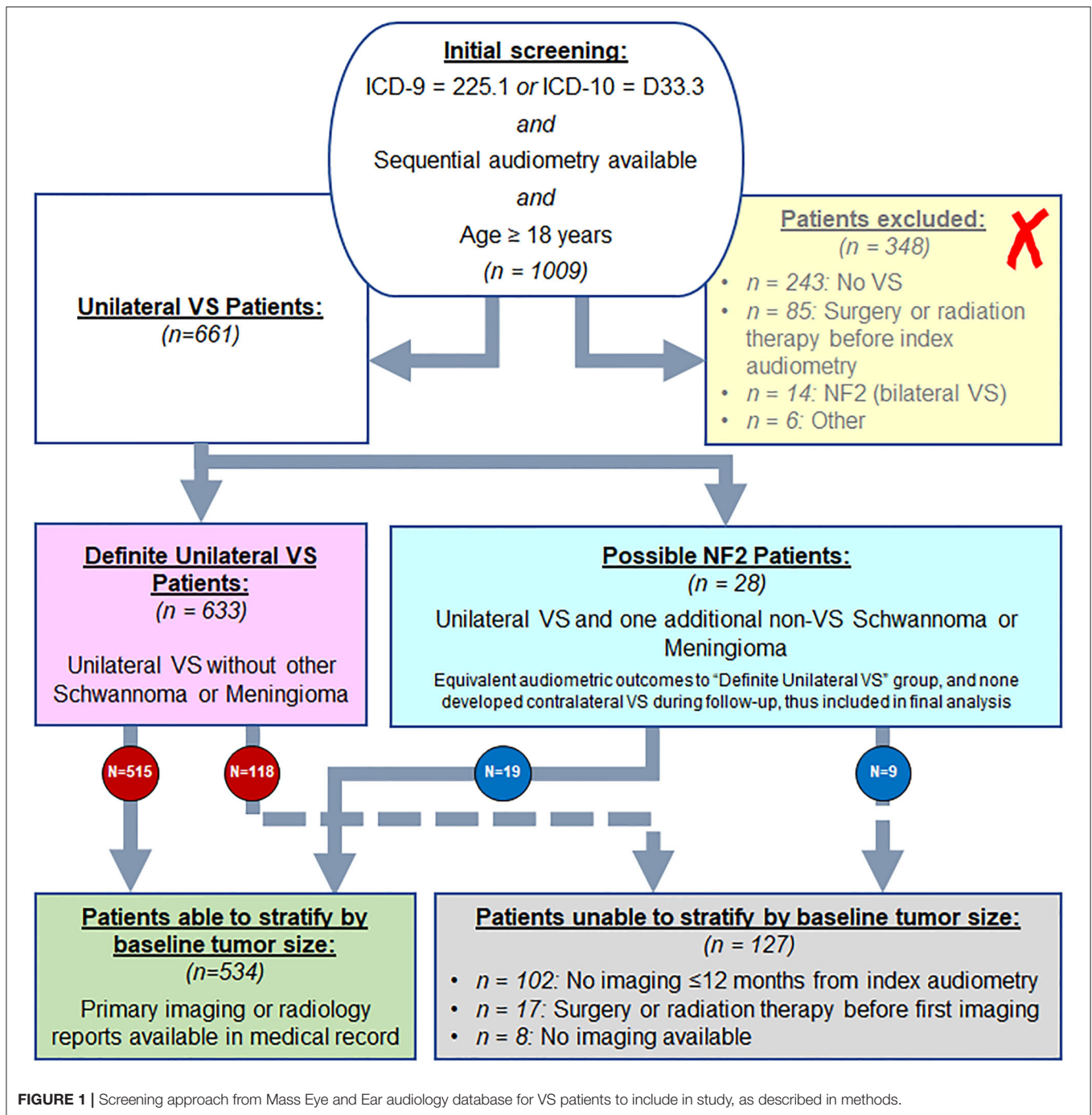


FIGURE 1 | Screening approach from Mass Eye and Ear audiology database for VS patients to include in study, as described in methods.

in thresholds to >40 dB from the normal range at baseline, or decline in word understanding to <78% from the normal range at baseline) were further reviewed in detail for any history of occult otologic disease, and excluded from the case control group if identified by chart review. Each case control patient had normal hearing in at least one ear, with either one or both ears included for analysis depending on baseline hearing status.

Kaplan-Meier analysis was performed to evaluate survival with endpoint defined by set audiometric criteria; ipsilateral ears were censored if undergoing either surgery or radiation

therapy. Log rank test was applied to evaluate significance in rate of endpoint achievement between VS-ipsilateral ears and VS-contralateral ears, and between VS-contralateral ears and case control group ears. All analyses were performed in Matlab (Mathworks, Natick, MA) and Excel (Microsoft Corporation, Redmond, WA).

Audiometry

VS patients were stratified by baseline audiometry; audiologic measurements included speech audiometry [word recognition

score (WRS%)] and threshold audiometry (dB HL). Word recognition score was calculated using standardized word list of monosyllables, measured as a percentage of correctly recognized words after listening to a recorded word list in quiet, typically at 70 dB or at the level at which the patient's speech intelligibility curve plateaus. Pure tone average (PTA) threshold was calculated as a three-tone average of bone conduction thresholds across 500 Hz, 1 kHz, and 2 kHz frequencies as the primary threshold-based hearing metric; alternate methods such as including the 4 kHz frequency within a four-tone average, and use of AAO-HNS hearing classification were also employed secondarily to confirm findings and trends. Normal baseline hearing was defined as WRS \geq 92% and a pure-tone average (PTA) threshold of \leq 25 dB assessed by bone conduction; additionally, if a patient's initial audiometry was performed in the setting of sudden SNHL, however subsequent audiometry demonstrated return to normal hearing within 90 days, then baseline hearing was considered normal for purposes of baseline hearing assignment. If an ear had normal baseline air thresholds but was not assessed for bone thresholds, then baseline hearing was also assigned as normal.

Progression of audiometric changes were assessed both ipsilateral and contralateral to known VS tumors. Progression of hearing loss over time was evaluated using Kaplan-Meier analysis, with change in hearing used to define endpoint. For PTAs, the primary assigned endpoint was defined as moderate hearing loss (PTA > 40 dB), with secondary endpoint of moderately severe hearing loss (PTA > 55 dB) per definition by the American Speech-Language-Hearing Association. For WRS%, the primary endpoint was defined as WRS < 78% (significant decline from baseline normal hearing at \geq 92%), with secondary endpoint defined as word understanding < 60% (significant further decline from the primary endpoint, and also clinical threshold for consideration of cochlear implantation) (17, 18).

Tumor Size

Review of tumor sizes at the time of each patient's index audiometry was performed via interpretation of primary imaging or review of imaging reports, depending on availability within the medical record. In cases where neither primary imaging nor reports were available, patients were included for analysis as part of the entire population, but not for analysis stratified by tumor size. Given that VS tumors typically grow slowly, at an average of 1–2 mm/year, and given that changes < 1 mm are within the margin of error for historically available imaging resolution, imaging was considered representative of baseline tumor size if completed within 12 months of the patient's first available audiogram (19, 20).

Koos Classification

Tumor extent was assessed according to the Koos grading system. Tumors were divided into various classes, described as Koos 1 (purely intrameatal), Koos 2 (intrameatal and extrameatal, but no contact with the brainstem), Koos 3 (touching the brainstem without compression of the brainstem), or Koos 4 (touching the brainstem with compression of the brainstem) (21). For patients where neither contemporary imaging reports nor primary images

were available from within 12 months of initial audiometry, these patients were included in analysis of the general patient population but could not be included in Koos segmentation.

RESULTS

Figure 1 shows the results of analysis of 1,009 patients with billing codes consistent with unilateral VS. A total of 257 patients were found to have either no VS ($N = 243$) or were found to have NF2 ($N = 14$) and were therefore excluded. Patients with no VS most frequently had a meningioma ($N = 39$), facial nerve schwannoma ($N = 29$) or intrachochlear schwannoma ($N = 18$). Furthermore, 25 patients had SNHL, seven had labyrinthine schwannoma, five had Meniere's disease, two had benign paroxysmal positional vertigo, and one had vestibular neuritis; none of these had imaging or audiometric evidence of retrocochlear pathology. An additional 117 cases had no evidence of any pathology involving the labyrinthine system, facial nerve, or vestibulocochlear nerve. Eighty-five patients were excluded due to existence of prior surgery or radiation in the area of the cochlear nerve preceding first audiometry. Six patients were excluded due to other reasons: three patients with glioma in addition to VS, one patient with Von Hippel-Lindau syndrome in addition to VS, and two patients with known long-standing contralateral deafness at time of index audiometry (thus precluding evaluation of changes in contralateral hearing). Patients who did not meet criteria for NF2 but had one additional non-VS schwannoma or meningioma in addition to a unilateral VS ($N = 28$) were analyzed separately from the included patient population in order to compare these patients with suspected NF2, but not meeting strict criteria, with the general VS patient population, with plan to exclude them from final analysis if significant differences in outcomes were found (22).

After the exclusions noted above, a core population of 661 patients diagnosed with unilateral VS were identified and described in **Table 1**. Median age was 56 years ranging from 21 to 89 years (standard deviation 12.6 years). Regarding tumor laterality, 320 (48.4%) tumors were right sided and 341 (51.6%) tumors were left sided. A significant female predominance was seen with 368 (55.7%) females compared to 293 (44.3%) males ($p = 0.0035$). Of all patients with unilateral VS, 274 patients (41.5%) eventually received surgery alone as treatment, 104 patients (15.7%) received radiotherapy alone, 14 patients (2.1%) received both surgery and radiotherapy and in 269 patients (40.7%) the tumor was monitored through watchful waiting without any surgical or radiologic intervention. In total, 534 patients had imaging within 12 months of index audiometry, and 518 within 6 months. The median tumor size was 12 mm, with a minimum of 1.5 mm to a maximum of 52 mm (standard deviation 7.9 mm). The remaining 127 patients could not be stratified by tumor size—these patients either had no imaging records available within 12 months of index audiometry or had undergone surgical or radiation treatment before the earliest available imaging. Patients with one additional non-VS schwannoma or meningioma were significantly older (60.8 vs. 55.2 years, $p = 0.021$) and had smaller average tumor size (9.0 vs. 13.1 mm,

TABLE 1 | Demographics in patients with sporadic unilateral VS.

		Unilateral VS patients				<i>p</i> -value for interaction, "Yes vs. No:"
		With other non-VS schwannoma or meningioma?	Overall	No	Yes	
Patient number	<i>N</i>		661	633	28	
Age (years)	Mean		55.4	55.2	60.8	<i>P</i> = 0.021
	Median		56	55	62	
	Range		21–89	21–89	37–78	
	Std. Dev.		12.6	12.7	10.6	
Tumor laterality	Right:	320	<i>p</i> = 0.41	307	13	<i>p</i> = 0.83
	Left:	341		326	15	
Sex	Male	293	<i>p</i> = 0.0035	283	10	<i>p</i> = 0.48
	Female	368		350	18	
Tumor dimensions (<i>n</i> = 531 patients with available baseline imaging ≤ 12 months from index audiometry that was sufficient to determine max tumor dimension*)	Max Dimension (mm)		(<i>n</i> = 531)	(<i>n</i> = 512)	(<i>n</i> = 19)	<i>p</i> = 0.026
	- Mean		13.0	13.1	9.0	
	- Median		12	12	7.5	
	- Range		1.5–52	1.5–52	3–24	
	- Std. Dev.		7.9	7.9	5.6	
Tumor size range:	≤10 mm	215	(40.5%)	202 (39.5%)	13 (68.4%)	<i>p</i> = 0.013
	>10–20 mm	235	(44.2%)	230 (44.9%)	5 (26.3%)	
	>20 mm	81	(15.3%)	80 (15.6%)	1 (5.3%)	
Tumor treatment modality	Surgery only	274	(41.5%)	266 (42.0%)	8 (28.6%)	<i>p</i> = 0.40
	Radiation only	104	(15.7%)	100 (15.8%)	4 (14.3%)	
	Both surgery and radiation	14	(2.1%)	13 (2.1%)	1 (3.6%)	
	No therapy	269	(40.7%)	254 (40.1%)	15 (53.5%)	

*For three patients with available baseline imaging and without other non-VS schwannoma or meningioma, chart review was sufficient only to determine Koos classification but not maximum tumor dimension.

p = 0.026), however did not differ compared to the general population in terms of sex distribution, tumor laterality, or treatment modality.

Of the 534 patients with contemporary baseline imaging available, 511 could be stratified by their tumor’s Koos classification as shown in **Table 2**. The age of Koos 4 patients was found to be significantly lower (*p* = 0.0012) than in smaller tumors. Significance for female vs. male predominance in the population was only seen in Koos 4 tumors as well (76 female vs. 49 male, *p* = 0.016). Increasing Koos classification was associated with larger tumors and increasing likelihood of surgical intervention, while patients with lower Koos classification had smaller tumors and were more likely to be managed without either surgery or radiotherapy. Radiation therapy was most commonly applied to patients with Koos 2 and Koos 3 tumors; multimodal therapy, the least common approach, was primarily reserved for Koos 4 tumors.

Baseline audiometric analysis, as shown in **Table 3**, demonstrated 310 patients with normal three-tone PTAs (≤25 dB) bilaterally at baseline, 257 of which additionally were normal by four-tone PTA assessment; 298 patients

had normal word understanding (WRS ≥ 92%) bilaterally. Furthermore, a total of 241 patients demonstrated both normal three-tone PTAs and word understanding bilaterally at baseline, while 218 demonstrated both normal four-tone PTAs and word understanding bilaterally. Average interval of follow-up audiometry was 2.1 years, and the selection of age- and sex-matched case controls, as described in Methods, resulted in average interval of follow-up audiometry also of 2.1 years. Results of Kaplan-Meier survival analysis in these patients demonstrated significant decline in hearing, both in terms of thresholds and word understanding, in VS-ipsilateral ears over time, regardless of endpoint chosen (**Figure 2**). The median time to reach threshold endpoint in VS-ipsilateral ears was 11.6 years for moderate SNHL by three-tone PTA criteria, and 11.2 years by four-tone PTA criteria, while for moderately severe SNHL the median time to reach endpoint was 14.2 years by three-tone PTA criteria and 14.1 years by four-tone PTA criteria; median time to reach word understanding endpoint in VS-ipsilateral ears was 11.8 years for WRS < 78% and 14.2 years for WRS < 60%. No significant difference was observed in hearing loss progression between VS-contralateral ears and age- and

TABLE 2 | Tumor dimensions in patients with sporadic unilateral VS.

Unilateral VS Patients with available baseline imaging sufficient for assessment by Koos classification (n = 511)									
Koos classification:		Koos 1		Koos 2		Koos 3		Koos 4	
Patient number	N	214		149		23		125	
Age (years)*	Mean	56.5		56.6		56.5		52.4	
	Median	57.5		57		56		53	
	Range	21–87		24–81		40–74		22–79	
	Std. Dev.	12.8		12.2		11.0		12.7	
Tumor laterality	Right:	101	$p = 0.41$	79	$p = 0.46$	11	$p = 0.83$	59	$p = 0.53$
	Left:	113		70		12		66	
Sex	Male	93	$p = 0.056$	72	$p = 0.68$	10	$p = 0.53$	49	$p = 0.016$
	Female	121		77		13		76	
Tumor dimensions**	Max Dimension (mm)	(n = 213)		(n = 149)		(n = 22)		(n = 124)	
	- Mean	6.4		13.2		16.1		23.3	
	- Median	6		13		15		22	
	- Range	1.5–14		4–28		11–25		12–52	
	- Std. Dev.	3.0		3.2		4.0		7.1	
	Tumor size range:								
	≤10 mm	189	(88.7%)	22	(14.8%)	0	(0.0%)	0	(0.0%)
	>10–20 mm	24	(11.3%)	124	(83.2%)	18	(81.8%)	52	(41.9%)
	>20 mm	0	(0.0%)	3	(2.0%)	4	(18.2%)	72	(58.1%)
	Tumor treatment modality	Surgery only	37	(17.3%)	66	(44.3%)	14	(60.9%)	95
Radiation only		31	(14.5%)	33	(22.1%)	6	(26.1%)	17	(13.6%)
Both surgery and radiation		3	(1.4%)	1	(0.7%)	0	(0.0%)	5	(4.0%)
No therapy		143	(66.8%)	49	(32.9%)	3	(13.0%)	8	(6.4%)

*Significant ($p = 0.0012$) difference in age when comparing Koos 4 vs. all other tumors; non-significant difference in age distribution between Koos 1, 2, and 3 classifications.

**For one each of patients with Koos 1, Koos 3, and Koos 4 tumors, chart review was sufficient to determine Koos classification but not maximum tumor dimension.

sex-matched controls in these patients, regardless of endpoint (moderate SNHL, moderately severe SNHL, WRS < 78%, or WRS < 60%).

Table 3 also demonstrates that 269 patients with normal three-tone PTAs (≤ 25 dB) in the VS-contralateral ear had abnormal three-tone PTAs (> 25 dB) in the VS-ipsilateral ear at baseline, while 290 patients with normal four-tone PTAs (≤ 25 dB) in the VS-contralateral ear had abnormal four-tone PTAs (> 25 dB) in the VS-ipsilateral ear at baseline; 270 patients with normal word understanding (WRS $\geq 92\%$) in the VS-contralateral ear had abnormal word understanding (WRS < 92%) in the VS-ipsilateral ear at baseline. In total, 190 patients had both normal three-tone PTAs and normal word understanding in the VS-contralateral ear, and also had both abnormal three-tone PTAs and abnormal word understanding in the VS-ipsilateral ear at baseline; 204 patients had both normal four-tone PTAs and normal word understanding in the VS-contralateral ear, and also had both abnormal four-tone PTAs and abnormal word understanding in the VS-ipsilateral ear at baseline. Average interval of follow-up audiometry was 2.1 years; selection of age- and sex-matched case controls, as described in Methods, resulted in average interval of follow-up audiometry also of 2.1 years. Results of Kaplan-Meier survival analysis in these

patients demonstrated significant decline in VS-contralateral hearing using moderate SNHL as endpoint, either by three-tone PTA criteria ($p = 0.008$) or four-tone PTA criteria ($p = 0.038$). Median time to endpoint was 17.9 years in VS-contralateral ears by three-tone PTA criteria, and 17.7 years by four-tone PTA criteria (**Figures 3A,B**). No significant difference was observed in hearing loss progression between VS-contralateral ears and age- and sex-matched controls when using other endpoints (moderately severe HL by either three- or four-tone PTA criteria, WRS < 78% or WRS < 60%), however the trend was consistently in the same direction regardless of endpoint used (**Figures 3C–F**). In these patients with abnormal baseline hearing in the VS-ipsilateral ear, progression of hearing loss in VS-ipsilateral ears could not be assessed.

Further subgroup analysis by patient age, sex, and Koos classification did not demonstrate any significant differences from the population-wide trends noted previously. Subsegmentation of patients with abnormal hearing in the VS-ipsilateral ear by degree of hearing loss, whether by thresholds or word understanding, did not demonstrate any trend toward increased risk in the VS-contralateral ear with worsening VS-ipsilateral hearing status. Although a small group, the 28 patients with an additional non-VS schwannoma or meningioma did

TABLE 3 | Demographics in patients with sporadic unilateral VS, segmented by baseline VS-ipsilateral hearing.

	Normal baseline hearing in VS-ipsilateral ear					Abnormal baseline hearing in VS-ipsilateral ear				
	PTA \leq 25 dB		WRS \geq 92%	PTA \leq 25 dB and WRS \geq 92%		PTA $>$ 25 dB		WRS $<$ 92%	PTA $>$ 25 dB and WRS $<$ 92%	
	3-tone	4-tone		3-tone PTA	4-tone PTA	3-tone	4-tone		3-tone PTA	4-tone PTA
Total N	310	257	298	241	218	269	290	270	190	204
Mean Age (years)*	51.0	50.0	51.6	50.4	49.8	57.1	56.2	56.7	57.1	56.0
Male N	131	100	124	101	87	118	129	122	83	90
(%)	(42.3%)	(38.9%)	(41.6%)	(41.9%)	(39.9%)	(43.9%)	(44.5%)	(45.2%)	(43.7%)	(44.1%)
Female N	179	157	174	140	131	151	161	148	107	114
(%)	(57.7%)	(61.1%)	(58.4%)	(58.1%)	(60.1%)	(56.1%)	(55.5%)	(54.8%)	(56.3%)	(55.9%)

*Significant ($p < 0.0001$) difference in age between patients with VS-ipsilateral normal vs. abnormal hearing at baseline, regardless of whether measured by PTAs, WRS, or both. Outputs plotted in **Figures 2, 3** are based on the most restrictive hearing definitions for normal vs. abnormal baseline hearing, as outlined above by red boxes. No significant differences were found in sex distribution, tumor laterality or tumor size for any group compared to general study population. All patients with normal VS-contralateral hearing at baseline.

not show any significant differences in hearing loss progression, either by thresholds or word understanding, compared to the general patient population, and as such were included in the overall population analysis. Patient age, sex, and tumor size were not associated with any patterns of hearing loss progression in VS-contralateral ears, whether by thresholds or by change in word understanding.

Table 4 evaluates the significance of sex distribution based on a combination of both baseline hearing status and Koos classification in patients with baseline normal VS-contralateral hearing. Patients with Koos 4 tumors and baseline normal VS-ipsilateral hearing were exceptionally more likely to be female (72.2 vs. 27.8%, $p = 0.0077$) than other patient demographics, while distribution of the sexes did not differ when considering patients with Koos 4 classification and baseline abnormal VS-ipsilateral hearing, or in patients with Koos 1–3 tumor classification regardless of baseline hearing status.

Evaluation of all of the above hearing outcomes by alternate PTA metrics, for example AAO-HNS hearing classification groups, revealed the same trends toward hearing loss over time as the analysis performed using either three- or four-tone PTAs.

DISCUSSION

Findings

This retrospective study demonstrates that in patients with unilateral VS and baseline abnormal hearing in the VS-ipsilateral ear, the progression of SNHL in the contralateral ear is significantly greater than expected for unrelated age-associated hearing loss in the general population. This finding is limited only to progression of thresholds to the level of moderate hearing loss, however directionally similar non-significant trends are also noted for other threshold- and word understanding-based endpoints. This interesting finding needs further examination in a future prospective study using a large number of patients with carefully documented otologic histories and sound exposures, as the finding suggests that VS-secreted factors may affect hearing in the contralateral ear. In the meantime, an alternative explanation for our finding could also be that patients with baseline abnormal

VS-ipsilateral hearing and accelerated hearing loss in the VS-contralateral ear have an underlying process that expedites bilateral hearing loss, such as history of unreported prior audiotrauma. Findings regarding progression of VS-ipsilateral hearing loss in patients with baseline normal hearing are in line with previous research (23). The implications of these findings are significant both clinically, for the setting of expectations for long-term hearing prognosis in patients newly diagnosed with VS, and for basic science research to better understand the underlying pathophysiology of these tumors.

For the majority of VS patients in our study, progression of VS-contralateral hearing loss is significantly delayed and of a less-severe degree than in the VS-ipsilateral ear. This suggests that if percolating VS-secreted factors or extracellular vesicles do reach the contralateral ear, they must either suffer some level of degradation during passage through CSF or blood, or become too diluted to exert the full-strength ototoxic effect beyond a certain distance from the tumor. It is also possible that an immune mediated mechanism could play a role in the pathophysiology of hearing loss progression, as immune and inflammatory mechanisms have previously been found to occur in other inner ear pathologies such as Ménière's disease, DFNA34 hearing loss and related autoimmune and autoinflammatory diseases of the inner ear (24–26). A growing field of evidence suggests that inflammation is a key feature of the VS microenvironment as well, such as excessive activation of the NLRP3 inflammasome leading to upregulation of associated proteins NLRP3 and IL-1 β , which have been preferentially upregulated in tumors associated with increased hearing loss (12, 27). The relative impact on thresholds vs. word understanding in contralateral ears can provide clues to the nature of which VS-secreted factors or immune mediated responses may be responsible for causing hearing loss in the VS-ipsilateral ear, and can guide further research in this direction.

Either an inflammatory or immune-mediated pathway would have the potential to stimulate innate immune responses against the contralateral ear, however it is uncertain whether this effect would be consistent with changes in contralateral hearing observed. The classic finding for hearing loss caused by VS tumors would be loss of word understanding out of proportion

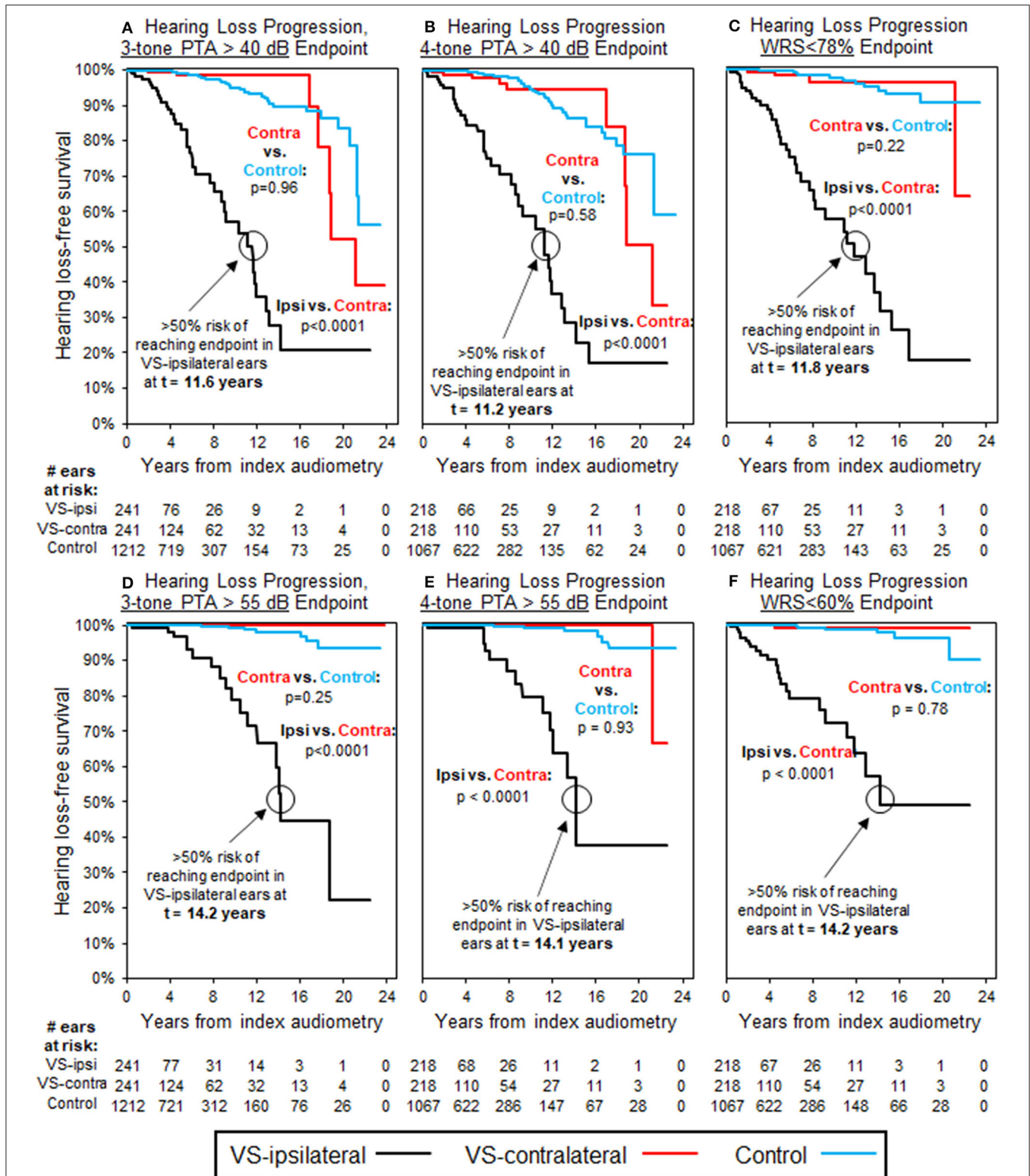


FIGURE 2 | Kaplan-Meier curves for HL progression in patients with baseline normal hearing bilaterally (WRS ≥ 92% and PTA ≤ 25 dB bilaterally); see **Table 3** for demographics. Analysis uses three-tone PTA to assess baseline hearing in **(A,D)**, as well as endpoint in **(A)**, while four-tone PTA used, respectively in **(B,C,E,F)**. Endpoint bone three-tone PTA > 40 dB (moderate HL); **(B)** Endpoint bone four-tone PTA > 40 dB (moderate HL); **(C)** Endpoint word understanding <78%; **(D)** Endpoint bone three-tone PTA > 55 dB (moderately severe HL); **(E)** Endpoint bone four-tone PTA > 55 dB (moderately severe HL); **(F)** Endpoint word understanding <60%. All control ears with normal baseline hearing defined by same criteria as for VS-ipsilateral and contralateral ears.

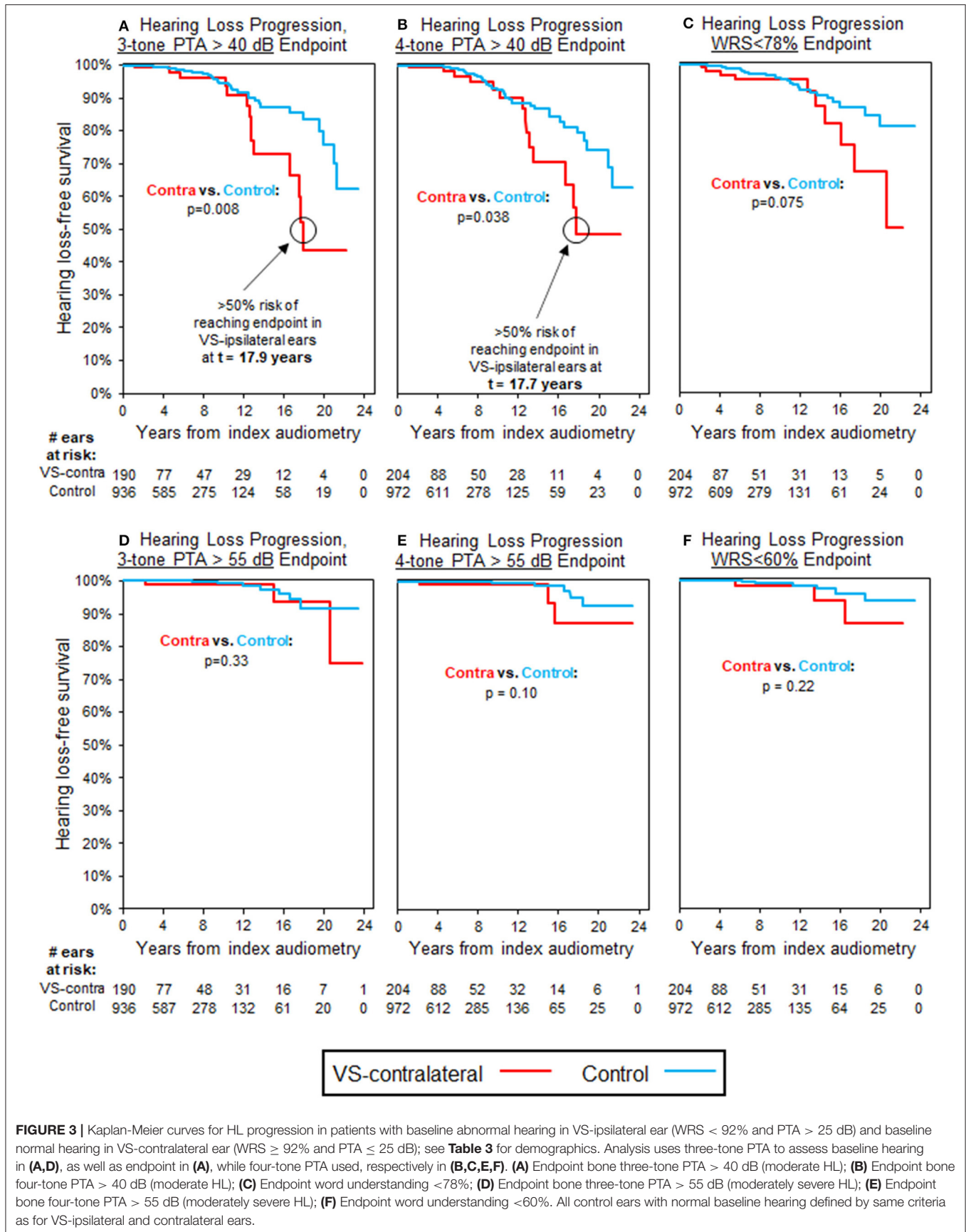


TABLE 4 | Sex distribution in patients with sporadic unilateral VS, segmented by baseline hearing and tumor Koos classification.

	Patients with normal VS-ipsilateral baseline hearing (3-tone PTA \leq 25 dB and WRS \geq 92%)				Patients with abnormal VS-ipsilateral baseline hearing (3-tone PTA $>$ 25 dB and WRS $<$ 92%)			
	Koos 1	Koos 2	Koos 3	Koos 4	Koos 1	Koos 2	Koos 3	Koos 4
Total <i>N</i>	89	43	8	36	40	59	7	36
Male <i>N</i>	41	21	3	10	16	25	3	15
(%)	(46.1%)	(48.8%)	(37.5%)	(27.8%)	(40.0%)	(42.4%)	(42.9%)	(41.7%)
Female <i>N</i>	48	22	5	26	24	34	4	21
(%)	(53.9%)	(51.2%)	(62.5%)	(72.2%)	(60.0%)	(57.6%)	(57.1%)	(58.3%)
<i>P</i> -value (M vs. F)	$p = 0.46$	$p = 0.88$	$p = 0.48$	$p = 0.0077$	$p = 0.21$	$p = 0.24$	$p = 0.71$	$p = 0.32$

All patients with normal VS-contralateral hearing at baseline.

to change in thresholds, which we observe in ipsilateral ears. However, in the contralateral ear we find that threshold change rather than change in word understanding is most significant. The shape of KM curves in **Figure 3**, for threshold and word understanding endpoints, respectively, are very similar, but separation of trend curves does not become noticeable until >12 years of follow-up in either group—by this time, only 32/204 (15.7%) VS patients have reliable follow-up, with the remainder having either already reached endpoint or been censored. This smaller population sample size limits the ability to detect significance, but more significant trends in word understanding might still be found with longer follow-up or a larger study population.

Of key clinical significance, the lack of effect regarding higher-threshold endpoints or word understanding on contralateral hearing is a positive clinical indicator in patients with VS, and can provide some additional reassurance to patients in whom the contralateral ear is often their only hearing ear. In patients with normal baseline hearing in the VS-ipsilateral ear, assurance can be provided that no effect is seen on VS-contralateral hearing by any metric, however it would still be important to update patient expectations with any change in clinical status over time. Five patients with normal baseline hearing bilaterally did reach moderate VS-contralateral hearing loss at ≥ 17 years' follow-up (**Figure 2A**), however in all cases the VS-ipsilateral ear in these patients had either previously transitioned to abnormal hearing, had undergone radiation therapy, or had undergone surgical intervention with incomplete resection. While baseline normal VS-ipsilateral hearing does seem to be a protective factor against long-term hearing loss contralaterally, this effect does not appear to persist if hearing status in the VS-ipsilateral ear declines significantly.

Our study reveals a significant female predominance of VS, which is in line with female predominance for VS that has also been seen in previous retrospective studies (28–30). A possible explanation for the recurrent finding could be sex hormonal influence on the development of VS (31–33). We note as well that the difference in sex distribution is driven primarily by greater female prevalence in patients with Koos 4 tumors, that patients with Koos 4 tumors and baseline normal hearing have significantly younger average age in general, and that patients

with normal baseline hearing in the VS-ipsilateral ear are also slightly more likely to be female. Particularly in patients with Koos 4 tumors and normal baseline hearing bilaterally, 72.2% of patients are female, compared to 55.7% in the study population as a whole. It may be that Koos 4 tumors, being physically larger and thus more likely to cause symptoms due to mechanical compression, are more likely to be diagnosed early relative to their effect on hearing through secreted factors. This presentation does not, however, explain the greater female predominance among large tumors with preserved hearing; rather, it may indicate a unique underlying pathophysiology for these large, brainstem-compressing tumors in younger female patients. A possible molecule mediating this effect and worthy of future investigation is fibroblast growth factor 2 (FGF2), because FGF2 is a mitogen, its serum levels are significantly higher in women than men without VS, and sporadic VS that secrete high levels of FGF2 have previously been associated with better hearing than VS that secrete low levels of FGF2 irrespective of tumor size (34, 35).

Within the four Koos classification groups the age of Koos 4 patients was found to be significantly lower than in other groups ($p = 0.0012$). When evaluating tumor size in other patient groups, however, no correlation is observed between tumor size and patient age, and no correlation between tumor size and progression of hearing loss either ipsi- or contralaterally. Evaluation of long-term hearing in patients with Koos 4 tumors is difficult since most patients undergo either surgery or radiation therapy very soon after diagnosis, after which time they are less likely to continue with long-term audiometric follow-up. Patients with smaller tumors that do not compress the brainstem are more likely to be found incidentally or with mild symptoms, and are more likely to be followed without immediate intervention. Within Koos 1–3 patients, no correlation is found between tumor size and progression of hearing loss either ipsi- or contralaterally, which supports prior findings that tumor size alone is a poor predictor of hearing loss progression (9, 10).

The age of patients with an additional non-VS schwannoma or meningioma, but not meeting strict NF2 criteria, is significantly higher compared to the unilateral VS group. It is possible that these older patients have simply had more time and opportunity to develop multiple sporadic schwannomas or meningiomas,

even without predisposing NF2 mutation. That no difference is seen in either ipsi- or contralateral hearing loss progression in this patient population, compared to patients with unilateral VS only, is reassuring that they are not hiding an occult NF2 mutation, and supports use of current guidelines for limiting NF2 diagnosis to only patients with either bilateral VS, ≥ 3 schwannomas or meningiomas, or unilateral VS plus known family history.

Given that splitting the VS patients by age, sex or tumor size showed no significant difference in SNHL progression, none of these subgroups seem to be confounders for contralateral hearing loss progression. Directionality and significance of results are shown to be consistent regardless of whether three- or four-tone PTA is used as the primary metric for threshold hearing; this finding is particularly valuable given that three-tone PTA measurements are most closely associated with speech reception thresholds, and thus of highest clinical utility, while mechanisms for progressive SNHL can often first affect only higher-threshold frequencies (36, 37). The high degree of alignment in outcomes, regardless of PTA metric used, supports the clinical value of using either three- or four-tone PTA metrics to assess contralateral hearing in VS patients.

Limitations

Firstly, due to the retrospective study design, availability of records was not complete for all patients, particularly in ability to assess tumor size in some patients. Audiometric follow-up is also highly variable, limiting granularity of longitudinal tracking of hearing outcomes. As Mass Eye and Ear is a tertiary referral center, patients in many cases may have undergone prior audiometry at outside facilities before initial presentation, and these records were not reliably accessible. Furthermore, for many patients with known VS undergoing long-term clinical surveillance, the contralateral ear was not tested at the same frequency or level of detail as for the ipsilateral ear, leading to the potential for premature censoring of some contralateral ears.

Secondly, during the study period covering 24 years, improvements in MRI resolution could have influenced accuracy of tumor size assessment. However, this is unlikely because the smallest tumor noted is 1.5 mm, still detectable even with a 1.5 T MRI (38), and tumor volumes obtained at 1.5T and 3T almost perfectly correlate for a different intracranial tumor (39).

Thirdly, the diagnosis of VS can only be made with 100% certainty through confirmative pathology, which is not available when watchful waiting or radiotherapy is applied. However, even in these cases the diagnosis of VS is very close to definitive because VSs are the most common tumors in the CPA and they lack distinctive radiographic features of other tumors such as the dural tail of a meningioma (40–43).

Case Control Group

Of particular interest to this analysis is the selection of appropriate case controls—patients with SNHL but no other known sensorineural otologic history and thus presumed presbycusis, as well as a similar interval for follow-up audiometry compared to the study population. A potential selection bias could be present within the case control group if patients with

occult otologic history were included, and if this history were not evident based on superficial review of diagnostic codes alone. To minimize this bias we performed detailed chart review on any case control patients who demonstrated significant change in hearing over time, and replaced those with other otologic histories with “clean” controls for whom the baseline otologic disease burden was equivalent to those of VS-contralateral ears, as detailed in the Methods section. This finding reinforces the continued importance of detailed chart review in the context of large database analyses, since over-reliance on the “face value” of historical diagnosis codes can easily overlook key components to the patient history.

CONCLUSIONS

This study represents to date the largest study tracking long term bilateral hearing outcomes in patients with VS. Our findings definitively demonstrate an increased risk of hearing loss in the VS-contralateral ear in patients with baseline VS-ipsilateral abnormal hearing. No variations in risk of contralateral hearing loss were found based on patient age, sex, tumor size, or degree of VS-ipsilateral hearing loss. In patients with baseline normal VS-ipsilateral hearing, no risk to long-term contralateral hearing was found by any metric or in any subgroup. Patients with baseline abnormal hearing in the VS-ipsilateral ear should be counseled of the increased risk to contralateral hearing, and additional care should be taken to avoid other otologic insults such as audiotrauma or potentially ototoxic medications. Alternately, patients with baseline normal VS-ipsilateral hearing can be reassured that the presence of a unilateral tumor does not predispose to worsening hearing loss in the contralateral ear, however should hearing loss in the VS-ipsilateral ear progress then the risk to hearing in the VS-contralateral ear may increase accordingly.

In light of previous research indicating role of secreted factors that may contribute to accelerated hearing loss progression in VS patients, these results indicate that the composition of these secreted factors do appear to be conducive to long-distance percolation through CSF or blood, although likely with some degradation or dilution, given that the effect on contralateral hearing seen in this study is much slower and less severe than the effects seen in the VS-ipsilateral ear. Immune or inflammatory-mediated processes uniquely affecting the inner ear may also play a role. Understanding key characteristics of these potentially relevant mechanisms, and the interplay between them, can help guide future research to better characterize and evaluate the composition and role played by each of these mechanisms.

DATA AVAILABILITY STATEMENT

The data analyzed in this study is subject to the following licenses/restrictions: Datasets can be made available upon request to interested parties. The primary dataset includes service dates for certain procedures which are considered protected under HIPAA guidelines, and as such cannot be shared publicly. Requests to access these datasets should be directed to konstantina_stankovic@meei.harvard.edu.

ETHICS STATEMENT

The studies involving human participants were reviewed and approved by Partners Human Research Committee Massachusetts Eye and Ear Infirmary. Written informed consent for participation was not required for this study in accordance with the national legislation and the institutional requirements.

AUTHOR CONTRIBUTIONS

KS conceived the project and supervised all the work. SE, ME, and KS designed the study. SE and CR collected data from patient

charts. SE wrote code for data analysis. Primary analysis and interpretation were then performed by SE and CR, with input from all authors. SE, CR, and KS wrote the manuscript. All authors edited the manuscript and approved the final version.

FUNDING

This work was supported by National Institute on Deafness and Other Communication Disorders (R01DC015824), Nancy Sayles Day Foundation, the Lauer Tinnitus Research Center, the Zwanziger Foundation, the Barnes Foundation, and Shelley and Dorothea Buckler (KS).

REFERENCES

- Matthies C, Samii M. Management of 1000 vestibular schwannomas (acoustic neuromas): clinical presentation. *Neurosurgery*. (1997) 40:1–9; discussion 1–10. doi: 10.1227/00006123-199701000-00001
- Propp JM, McCarthy BJ, Davis FG, Preston-Martin S. Descriptive epidemiology of vestibular schwannomas. *Neuro Oncol*. (2006) 8:1–11. doi: 10.1215/S1522851704001097
- Mahaley MS, Mettlin C, Natarajan N, Laws ER, Peace BB. Analysis of patterns of care of brain tumor patients in the United States: a study of the Brain Tumor Section of the AANS and the CNS and the Commission on Cancer of the ACS. *Clin Neurosurg*. (1990) 36:347–52.
- Stangerup SE, Caye-Thomasen P, and natural history of vestibular schwannomas. *Otolaryngol Clin North Am*. (2012). 45:257–68. doi: 10.1016/j.otc.2011.12.008
- Evans DG, Howard E, Giblin C, Clancy T, Spencer H, Huson SM, et al. Birth incidence and prevalence of tumor-prone syndromes: estimates from a UK family genetic register service. *Am J Med Genet A*. (2010) 152A:327–32. doi: 10.1002/ajmg.a.33139
- Thakur JD, Banerjee AD, Khan IS, Sonig A, Shorter CD, Gardner GL, et al. An update on unilateral sporadic small vestibular schwannoma. *Neurosurg Focus*. (2012) 33:E1. doi: 10.3171/2012.6.FOCUS12144
- Sagers JE, Brown AS, Vasilijic S, Lewis RM, Sahin MI, Landegger LD, et al. Computational repositioning and preclinical validation of mifepristone for human vestibular schwannoma. *Sci Rep*. (2018) 8:5437. doi: 10.1038/s41598-018-23609-7
- Mahboubi H, Ahmed OH, Yau AY, Ahmed YC, Djalilian HR. Complications of surgery for sporadic vestibular schwannoma. *Otolaryngol Head Neck Surg*. (2014) 150:275–81. doi: 10.1177/0194599813512106
- Caye-Thomasen P, Dethloff T, Hansen S, Stangerup SE, Thomsen J. Hearing in patients with intracanalicular vestibular schwannomas. *Audiol Neurootol*. (2007) 12:1–12. doi: 10.1159/000096152
- Nadol JB, Jr., Diamond PF, Thornton AR. Correlation of hearing loss and radiologic dimensions of vestibular schwannomas (acoustic Neuromas). *Am J Otol*. (1996) 17:312–6.
- Soares VY, Atai NA, Fujita T, Dilwali S, Sivaraman S, Landegger LD, et al. Extracellular vesicles derived from human vestibular schwannomas associated with poor hearing damage cochlear cells. *Neuro Oncol*. (2016) 18:1498–507. doi: 10.1093/neuonc/now099
- Sagers JE, Sahin MI, Moon I, Ahmed SG, Stemmer-Rachamimov A, Brenner GJ, et al. NLRP3 inflammasome activation in human vestibular schwannoma: Implications for tumor-induced hearing loss. *Hear Res*. (2019) 381:107770. doi: 10.1016/j.heares.2019.07.007
- Dilwali S, Landegger LD, Soares VY, Deschler DG, Stankovic KM. Secreted factors from human vestibular schwannomas can cause cochlear damage. *Sci Rep*. (2015) 5:18599. doi: 10.1038/srep18599
- Moon SK, Woo JI, Lim DJ. Involvement of TNF- α and IFN- γ in Inflammation-Mediated Cochlear Injury. *Ann Otol Rhinol Laryngol*. (2019) 128:8S–15S. doi: 10.1177/0003489419837689
- Katsumi S, Sahin MI, Lewis RM, Iyer JS, Landegger LD, Stankovic KM. Intracochlear perfusion of tumor necrosis factor-alpha induces sensorineural hearing loss and synaptic degeneration in guinea pigs. *Front Neurol*. (2019) 10:1353. doi: 10.3389/fneur.2019.01353
- Lewis D, Roncaroli F, Agushi E, Mosses D, Williams R, Li KL, et al. Inflammation and vascular permeability correlate with growth in sporadic vestibular schwannoma. *Neuro Oncol*. (2019) 21:314–25. doi: 10.1093/neuonc/nyy177
- Halpin C, Rauch SD. Using audiometric thresholds and word recognition in a treatment study. *Otol Neurotol*. (2006) 27:110–6. doi: 10.1097/00129492-200601000-00020
- Snel-Bongers J, Netten AP, Boermans PBM, Rotteveel LJC, Briaire JJ, Frijns JHM. Evidence-based inclusion criteria for cochlear implantation in patients with postlingual deafness. *Ear Hear*. (2018) 39:1008–14. doi: 10.1097/AUD.0000000000000568
- Lohmann G, Bohn S, Muller K, Trampel R, Turner R. Image restoration and spatial resolution in 7-tesla magnetic resonance imaging. *Magn Reson Med*. (2010) 64:15–22. doi: 10.1002/mrm.22488
- Paldor I, Chen AS, Kaye AH. Growth rate of vestibular schwannoma. *J Clin Neurosci*. (2016) 32:1–8. doi: 10.1016/j.jocn.2016.05.003
- Erickson NJ, Schmalz PGR, Agee BS, Fort M, Walters BC, McGrew BM, et al. Koos classification of vestibular schwannomas: a reliability study. *Neurosurgery*. (2018) 85:409–14. doi: 10.1093/neuros/nyy409
- Baser ME, Friedman JM, Joe H, Shenton A, Wallace AJ, Ramsden RT, et al. Empirical development of improved diagnostic criteria for neurofibromatosis 2. *Genet Med*. (2011) 13:576. doi: 10.1097/GIM.0b013e318211faa9
- Kirchmann M, Karnov K, Hansen S, Dethloff T, Stangerup SE, Caye-Thomasen P. Ten-year follow-up on tumor growth and hearing in patients observed with an intracanalicular vestibular schwannoma. *Neurosurgery*. (2017) 80:49–56. doi: 10.1227/NEU.0000000000001414
- Savastano M, Giacomelli L, Marioni G. Non-specific immunological determinations in meniere's disease: any role in clinical practice? *Eur Arch Otorhinolaryngol*. (2007) 264:15–9. doi: 10.1007/s00405-006-0147-2
- Nakanishi H, Kawashima Y, Kurima K, Chae JJ, Ross AM, Pinto-Patarroyo G, et al. NLRP3 mutation and cochlear autoinflammation cause syndromic and nonsyndromic hearing loss DFNA34 responsive to anakinra therapy. *Proc Natl Acad Sci USA*. (2017) 114:E7766–75. doi: 10.1073/pnas.1702946114
- Platt M, Dilwali S, Elackattu A, Parikh JR, Stankovic KM. Mining immune epitopes in the inner ear. *Otolaryngol Head Neck Surg*. (2014) 150:460–3. doi: 10.1177/0194599813514725
- Hanna CJ, Lewis D, O'Leary C, Donofrio CA, Evans DG, Roncaroli F, et al. The inflammatory microenvironment in vestibular schwannoma. *Neuro Oncol Adv*. (2020) 2:1–12. doi: 10.1093/oaajnl/vdaa023
- Babu R, Sharma R, Bagley JH, Hatfaj J, Friedman AH, Adamson C. Vestibular schwannomas in the modern era: epidemiology, treatment trends, and disparities in management. *J Neurosurg*. (2013) 119:121–30. doi: 10.3171/2013.1.JNS121370
- Pinna MH, Bento RF, Neto RV. Vestibular schwannoma: 825 cases from a 25-year experience. *Int Arch Otorhinolaryngol*. (2012) 16:466–75. doi: 10.7162/S1809-9772012000400007
- Lin RH, Wang TC, Lin CD, Lin HL, Chung HK, Wang CY, et al. Predictors of hearing outcomes following low-dose stereotactic radiosurgery in patients

- with vestibular schwannomas: a retrospective cohort review. *Clin Neurol Neurosurg.* (2017) 162:16–21. doi: 10.1016/j.clineuro.2017.09.001
31. Brown CM, Ahmad ZK, Ryan AF, Doherty JK. Estrogen receptor expression in sporadic vestibular schwannomas. *Otol Neurotol.* (2011) 32:158–62. doi: 10.1097/MAO.0b013e3181feb92a
 32. Kasantikul V, Brown WJ. Estrogen receptors in acoustic neurilemmomas. *Surg Neurol.* (1981) 15:105–9. doi: 10.1016/0090-3019(81)90023-9
 33. Rosahl S, Bohr C, Lell M, Hamm K, Iro H. Diagnostics and therapy of vestibular schwannomas - an interdisciplinary challenge. *GMS Curr Top Otorhinolaryngol Head Neck Surg.* (2017) 16:Doc03. doi: 10.3205/cto000142
 34. Larsson A, Sköldenberg E, Ericson H. Serum and plasma levels of FGF-2 and VEGF in healthy blood donors. *Angiogenesis.* (2002) 5:107–10. doi: 10.1023/A:1021588227705
 35. Dilwali S, Lysaght A, Roberts D, Barker FG, McKenna MJ, Stankovic KM. Sporadic vestibular schwannomas associated with good hearing secrete higher levels of fibroblast growth factor 2 than those associated with poor hearing irrespective of tumor size. *Otol Neurotol.* (2013) 34:748–54. doi: 10.1097/MAO.0b013e31828048ec
 36. Kim JM, Na MS, Jung KH, Lee SH, Han JS, Lee OH, et al. The best-matched pure tone average and speech recognition threshold for different audiometric configurations. *Korean J Otorhinolaryngol-Head Neck Surg.* (2016) 59:725–9. doi: 10.3342/kjorl-hns.2016.59.10.725
 37. Huh DA, Choi YH, Ji MS, Moon KW, Yoon SJ, Sohn JR. Comparison of pure-tone average methods for estimation of hearing loss caused by environmental exposure to lead and cadmium: does the pure-tone average method which uses low-frequency ranges underestimate the actual hearing loss caused by environmental lead and cadmium exposure? *Audiol Neurootol.* (2018) 23:259–69. doi: 10.1159/000494049
 38. Ba-Ssalamah A, Nobauer-Huhmann IM, Pinker K, Schibany N, Prokesch R, Mehraïn S, et al. Effect of contrast dose and field strength in the magnetic resonance detection of brain metastases. *Invest Radiol.* (2003) 38:415–22. doi: 10.1097/01.RLI.0000067488.57101.bd
 39. Tselikas L, Souillard-Scemama R, Naggara O, Mellerio C, Varlet P, Dezamis E, et al. Imaging of gliomas at 1.5 and 3 Tesla - a comparative study. *Neuro-oncology.* (2015) 17:895–900. doi: 10.1093/neuonc/nou332
 40. Singh K, Singh MP, Thukral C, Rao K, Singh K, Singh A. Role of magnetic resonance imaging in evaluation of cerebellopontine angle schwannomas. *Indian J Otolaryngol Head Neck Surg.* (2015) 67:21–7. doi: 10.1007/s12070-014-0736-0
 41. Lyndon D, Lansley JA, Evanson J, Krishnan AS. Dural masses: meningiomas and their mimics. *Insights Imaging.* (2019) 10:11. doi: 10.1186/s13244-019-0697-7
 42. Xia H, Zhong D, Wu X, Li J, Yang Y, Sun X. Medulloblastomas in cerebellopontine angle: epidemiology, clinical manifestations, imaging features, molecular analysis and surgical outcome. *J Clin Neurosci.* (2019) 67:93–8. doi: 10.1016/j.jocn.2019.06.013
 43. Springborg JB, Poulsgaard L, Thomsen J. Nonvestibular schwannoma tumors in the cerebellopontine angle: a structured approach and management guidelines. *Skull Base.* (2008) 18:217–27. doi: 10.1055/s-2007-1016959

Conflict of Interest: The authors declare that the research was conducted in the absence of any commercial or financial relationships that could be construed as a potential conflict of interest.

Copyright © 2020 Early, Rinnooy Kan, Eggink, Frijns and Stankovic. This is an open-access article distributed under the terms of the Creative Commons Attribution License (CC BY). The use, distribution or reproduction in other forums is permitted, provided the original author(s) and the copyright owner(s) are credited and that the original publication in this journal is cited, in accordance with accepted academic practice. No use, distribution or reproduction is permitted which does not comply with these terms.