

University of Groningen

Testing a phantom eye under various signal-to-noise ratio conditions using eleven different OCT devices

Heikka, Tuomas; Ometto, Giovanni; Montesano, Giovanni; Rowe, Scott; Jansonius, Nomdo M.; Crabb, David P.

Published in:
Biomedical optics express

DOI:
[10.1364/BOE.383103](https://doi.org/10.1364/BOE.383103)

IMPORTANT NOTE: You are advised to consult the publisher's version (publisher's PDF) if you wish to cite from it. Please check the document version below.

Document Version
Publisher's PDF, also known as Version of record

Publication date:
2020

[Link to publication in University of Groningen/UMCG research database](#)

Citation for published version (APA):

Heikka, T., Ometto, G., Montesano, G., Rowe, S., Jansonius, N. M., & Crabb, D. P. (2020). Testing a phantom eye under various signal-to-noise ratio conditions using eleven different OCT devices. *Biomedical optics express*, 11(3), 1306-1315. <https://doi.org/10.1364/BOE.383103>

Copyright

Other than for strictly personal use, it is not permitted to download or to forward/distribute the text or part of it without the consent of the author(s) and/or copyright holder(s), unless the work is under an open content license (like Creative Commons).

The publication may also be distributed here under the terms of Article 25fa of the Dutch Copyright Act, indicated by the "Taverne" license. More information can be found on the University of Groningen website: <https://www.rug.nl/library/open-access/self-archiving-pure/taverne-amendment>.

Take-down policy

If you believe that this document breaches copyright please contact us providing details, and we will remove access to the work immediately and investigate your claim.

Downloaded from the University of Groningen/UMCG research database (Pure): <http://www.rug.nl/research/portal>. For technical reasons the number of authors shown on this cover page is limited to 10 maximum.



Testing a phantom eye under various signal-to-noise ratio conditions using eleven different OCT devices

TUOMAS HEIKKA,^{1,5}  GIOVANNI OMETTO,^{2,3,5} GIOVANNI MONTESANO,^{2,3} SCOTT ROWE,⁴ NOMDO M. JANSONIUS,^{1,*} AND DAVID P. CRABB²

¹*Department of Ophthalmology, University of Groningen, University Medical Center Groningen, Groningen, The Netherlands*

²*Division of Optometry and Visual Science, School of Health Sciences, City, University of London, London, UK*

³*Moorfields Eye Hospital, London, UK*

⁴*Rowe Technical Design, Inc. Dana Point, CA 92629, USA*

⁵*Contributed equally*

**n.m.jansonius@umcg.nl*

Abstract: We compared eleven OCT devices in their ability to quantify retinal layer thicknesses under different signal-strength conditions, using a commercially available phantom eye. We analyzed a medium-intensity 50 μm layer in an identical manner for all devices, using the provided log-scale images and a reconstructed linear-scale tissue reflectivity metric. Thickness measurements were highly comparable when the data were analyzed in an identical manner. With optimal signal strength, the thickness of the 50 μm layer was overestimated by a mean of 4.3 μm in the log-scale images and of 2.7 μm in the linear-scale images.

© 2020 Optical Society of America under the terms of the [OSA Open Access Publishing Agreement](#)

1. Introduction

Optical coherence tomography (OCT) has made a high impact in the clinical practice in ophthalmology. In retinal disease, a qualitative description of the images is common, sometimes extended with a measure of the overall thickness of the retina to quantify edema; in glaucoma and other diseases affecting the optic nerve, a quantitative assessment of individual retinal layers, especially the retinal nerve fiber layer (RNFL), retinal ganglion cell layer (RGCL), and inner plexiform layer (IPL), is the primary approach. Unfortunately, current commercial OCT devices have a poor inter-brand repeatability regarding the assessment of the retinal layers, limiting the interchangeable use of different devices. Differences between devices have been observed both in human eyes [1–7] and in specially developed phantom eyes [8–11].

Discrepancies in observed layer thicknesses can be the result of differences in hardware, software, image quality, field of view (FOV), or the size of the region of interest (ROI) [9]. Moreover, if devices differ, it is not possible to know which one is most accurate. Proprietary issues play a role here, and validating OCT measurements to histology is extremely challenging. The only way to standardize measurements is to use some kind of phantom eye with known anatomy. While the use of phantoms is quite common in other medical imaging modalities like CT and MRI [12], their use in ophthalmic imaging is sparse and not standardized [13]. A decrease in image quality can be caused by changes in the optical media, due to, for example, dry eye syndrome, corneal opacities, cataract or myopia. [14,15] A decrease in image quality may cause the measured layers seem thinner than they actually are [16–18] and may thus hamper disease detection and accurate follow-up. One way to artificially decrease SNR, is to prevent a portion of the light from reaching the imaging sensor, by using neutral density filters.

The aim of this study was to compare 11 commercially available OCT acquisition devices in their ability to quantify retinal layer thicknesses under different signal-strength conditions. For this purpose, we assessed a layer with known thickness in a commercially available phantom eye. OCT scans were acquired using each device's default settings with optimal and artificially-degraded image quality using neutral density filters. A standardized, custom approach to analyze layer thicknesses was used to remove the effect of differences in segmentation software. As a result, all images were analyzed in an identical manner.

2. Methods

2.1. Model eye

The whole model eye, as provided by Rowe Technical Design, Inc. (Dana Point, CA, USA) is fitted with the following tissue phantoms: aspheric cornea with central corneal thickness of $427\ \mu\text{m}$; crystalline lens (shape and thickness of which mimic a 50 YO male, $4.0\ \text{mm}$ central thickness; retina phantom, which is composed of 6 layers, including a retinal pigment epithelium layer and a choroid. Total retinal thickness is approximately $300\ \mu\text{m}$. The thickness varies [see Fig. 1(C)], because, during the embossment process, the top four layers are crushed, to make a foveal shape. However, this does not influence the layer of interest, the fifth layer. Total axial length of the model eye is approximately $25.7\ \text{mm}$. The model eye is fluid filled with a polymer fluid that mimics the refractive index (RI) of aqueous and vitreous humor (1.3315 ± 0.0005 at room temperature) and is sealed without bubbles. There is a $5\ \text{mm}$ pupil and all phantoms are axisymmetric in the model eye. The thickness of the layer used for this study [marked in Fig. 1(C)] inside the model eye is $50 \pm 1\ \mu\text{m}$ and the mean RI of the various retinal layers is 1.564 ± 0.001 , as reported by the manufacturer. The same model eye was used in all measurements.

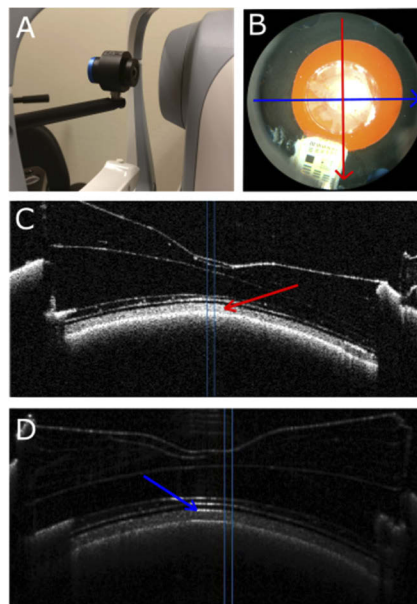


Fig. 1. A) Model eye in front of one of the Canon OCT. B) Fundus photograph from the model eye used for the correct positioning of the eye. Red and blue lines show vertical and horizontal B-scan imaging direction, respectively. C) B-scan obtained with Canon OCT. Arrow indicates the primary layer of interest; vertical blue lines depict the size of the analyzed area. D) B-scan acquired with Heidelberg Engineering Spectralis 1 showing hyperreflectivity at the center of the imaged area.

2.2. Imaging devices

Table 1 lists the 11 spectral domain OCT (SD-OCT) devices used and highlights their technical aspects and the differences in imaging protocols used. Two identical Heidelberg Engineering Spectralis OCT-1 (Heidelberg, Germany) were used at two different locations (City, University of London, London, UK and Queen Elizabeth Hospital Birmingham, Birmingham, UK) to investigate differences between two devices of the same model. The imaging technology of the Heidelberg Engineering Flex is the same as used in the Spectralis OCT-2. However, the latter is a device with conventional headrest, while the former is mounted on an adjustable arm.

Table 1. Device specifics

Manufacturer	Model	Software version	Operator	Scan mode	Image size (mm)	B-scan size (pixels)	Axial pixel size (μm)	Light-source (nm)
Canon, Tokyo, Japan	HS-100	4.2.2001	*	Glaucoma scan	$10 \times 10 \times 2$	1024×1176	1.7	855
Nidek, Aishi, Japan	Retina Scan Duo 330	01.02.01	*	Circle scan	$12 \times 9 \times 2.1$	1024×512	4.1	880
Heidelberg Engineering, Inc., Heidelberg, Germany	Spectralis OCT-1	HSF-OCT-103	**	Single line, ART 9	$4.5 \times 4.7 \times 1.92$	768×496	3.87	870
Heidelberg Engineering, Inc., Heidelberg, Germany	Spectralis OCT-2	HSF-OCT-103	**	Single line, ART 9	$4.5 \times 4.7 \times 1.92$	768×496	3.87	870
Heidelberg Engineering, Inc., Heidelberg, Germany	Spectralis Flex	HSF-OCT-103	**	Single line, ART 9	$4.5 \times 4.7 \times 1.92$	768×496	3.87	870
Optovue, Inc, Fremont, CA	AngioVue OCTA	-	***	3D Retina	$7 \times 7 \times 1.92$	640×385	3	840
Carl Zeiss Meditec, Inc., Dublin, CA	Cirrus model 5000	-	***	Macular cube	$6 \times 6 \times 2$	512×512	3.9	840
Topcon Inc., Tokyo, Japan	3DOCT-2000	1.23.14885	*	Macula 7-line raster	6×2.3	1024×885	2.6	840
Topcon Inc., Tokyo, Japan	3DOCT-1000MK2	02.02	*	3D scan mode	$6 \times 6 \times 2.3$	512×650	3.5	840
Heidelberg Engineering, Inc., Heidelberg, Germany	Spectralis OCT-1	HSF-OCT-103	*	Single line, ART 9	$4.5 \times 4.7 \times 1.92$	768×496	3.87	870
Topcon Inc., Tokyo, Japan	Maestro (3D OCT-1)	-	*	3D	$6 \times 6 \times 2.3$	512×885	2.6	840

*T.H; **Technician at Queen Elizabeth Hospital Birmingham; ***Technician at Moorefield's eye hospital.

2.3. Image acquisition

Acquisitions were obtained using each device's default settings, with the model eye fixed to the headrest [Fig. 1(A)]. Figure 1(B)-1(D) show a fundus image of the model eye and B-scans from two different devices, respectively. Scans with and without attenuated signals were obtained from each device. Three neutral density filters (NIR filter; Edmund Optics, Barrington, USA) with

optical density (OD) of 0.3, 0.6, and 0.9 were used to attenuate the light to measure thicknesses under six different signal-to-noise ratio (SNR) conditions. Filters were used individually or stacked together in combination to reduce the intensity to 1/2, 1/4, 1/8, 1/16, 1/32, and 1/64 of the original intensity in a single pass (0.3, 0.6, 0.9, 1.2, 1.5, and 1.8 OD respectively); they were placed between the OCT device and the model eye, by holding the filter against the OCT device to ensure stability. When using a filter, the OCT device had to be moved closer to the model eye (which was left in place between the measurements), due to changed optical path length. Applying several filters meant the OCT device had to be moved even closer. Some devices were unable to accommodate more than one or two filters due to a lack of space between the model eye and the OCT device. For each neutral density filter setting, either a single B-scan was captured or a full set of B-scans (cube scan; see Data analysis subsection). Autofocus was used in all devices, if there was an option for it. The focus was switched to manual when the autofocus failed due to the filters. Autofocus was used when possible, often it was needed to use manual focus, especially when using filters.

2.4. Data analysis

For each B-scan, we calculated the mean of 10 adjacent A-scans to improve the SNR. This was repeated for 10 adjacent B-scans, when a 3D scan was acquired, yielding 10 mean A-scans. These 10 mean A-scans were analyzed separately, after which the resulting thicknesses were averaged. For the Spectralis devices, only a single B-scan was acquired (with ART 9 level, meaning that the single B-scan is an average of 9 recordings), yielding a single mean A-scan. For the Topcon 2000, five middle line scans out of seven were averaged. For Nidek, we averaged 10 radial scans. The analyzed region was chosen as close to the center of the image (optical axis of the eye) as possible, while avoiding hyperreflective areas caused by the filters [Fig. 1(D)]. Subsequently, the thickness of the selected layer [Fig. 1(C)] was calculated in pixels as the distance between its two edges and then converted in μm using, for each device, information regarding the reported thickness of the image in mm and the corresponding number of pixels in the exported image. The edges were identified manually on the averaged A-scan [Fig. 2(A)] as the peak locations in the first derivative [Fig. 2(B)] of the exported image in log-scale.

We also analyzed the data in an alternative way. The raw output of an OCT device (the square of the modulus of the Fourier transform) is proportional to the tissue reflectivity; before exporting, this output is transformed logarithmically to generate the images normally provided by the OCT devices, referred to as log-scaled images in this article, in which relevant structures can be distinguished by the human eye. Images may also be compressed to fit the commonly used 8-bit depth of monitors. In order to get unbiased thickness estimates, however, the untransformed, referred to as linear-scaled image in this article, data are needed [19].

We were able to export the linear-scale data from the Heidelberg Engineering devices by using the Heyex software (Heidelberg Engineering). The other OCT devices provided only the default, log-scale images. As the details of the transformation may differ amongst OCT devices and are not provided by the manufacturers, a logarithmic transformation with 50 dB dynamic range was assumed (see Discussion section). [20,21] This results in image intensity transformation given by:

$$I_{linear}(i,j) = 10^{\frac{I_{log}(i,j)}{255} - 5} \quad (1)$$

where $I_{linear}(i,j)$ is the linear-scale intensity at location (i,j) and $I_{log}(i,j)$ the log-scaled intensity (the grey intensity values of the image; 0-255 for an 8-bit image). For Optovue, which gives 12-bit images, another intensity transformation was used, based on optical bench measurements by Zhang et al. [22]:

$$I_{linear}(i,j) = 6.88 \times 10^{-7} \times 10^{\frac{I_{log}(i,j)}{800}} \quad (2)$$

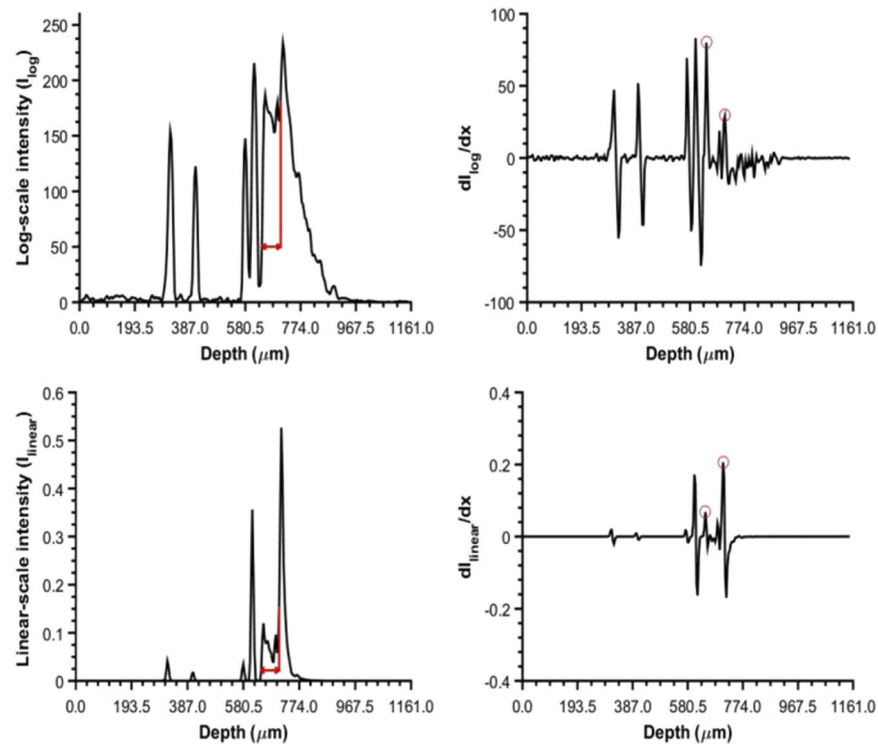


Fig. 2. A) A-scan from log-scale values with the 50 μm layer marked. B) Corresponding first derivative. Peaks corresponding to the edges of the 50 μm layer are marked with red circles. The layer thickness was defined as the distance between these two peaks. C) A-scan from linear-scale values and D) corresponding first derivative. Data from HE Spectralis 1.

Equations (1) and (2) are essentially identical if they are applied to 8-bit and 12-bit images, respectively ($2^{12}/800 \sim 5$). OCT devices use the RI of the retinal human tissue to provide the desired physical thickness of the layers from the measured optical thickness. A RI of 1.38 is assumed for the human eye [20]. The RI of the measured layer in the phantom eye is 1.564, as reported by the manufacturer. In order to get the true physical thickness, we need to account for the difference in the RI [23]. The true physical thickness is therefore $1.38/1.564 = 0.88$ of the reported thickness. This ratio was used to scale the measurements.

2.5. Statistical analysis

The effect of filter strength and analysis method (image versus reflectivity based) was studied using repeated measures analysis of variance (ANOVA); because filters could not be used in all devices, we compared the analysis method also separately for thickness measurements without filter, using a paired t-test. All analyses were performed using R (version 3.2.3; R Foundation for Statistical Computing, Vienna, Austria). A p-value of 0.05 or less was considered statistically significant.

3. Results

Figure 3 shows the effect of signal attenuation on the OCT image. Topcon Maestro, being fully automated, failed to take any images from the model eye when filters were used since it did not recognize the pupil and failed to align the device. Topcon 1000 and 2000 didn't show anything in the scans beyond 0.9 OD filters. Only Canon could be used to measure the phantom eye with 1.8

OD filter due to lack of physical space between the device and the phantom eye in the other OCT devices (the 1.8 OD requires the use of all 3 filters simultaneously). The thickness measurement in Canon and Nidek became impossible after 1.2 OD due to noise.

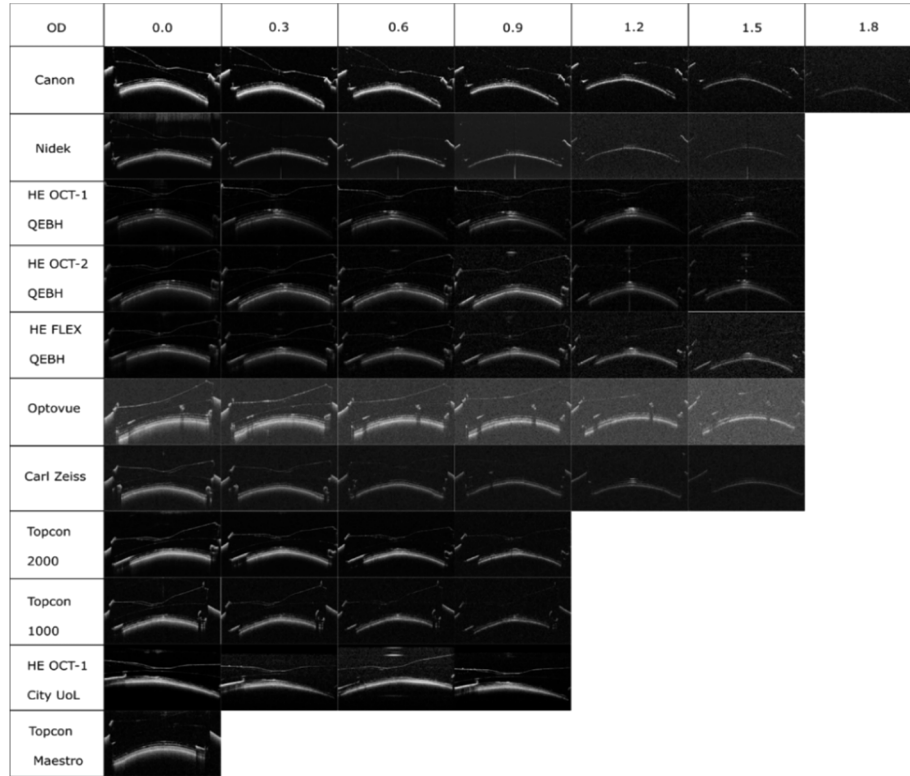


Fig. 3. B-scans from the phantom eye measured using different OCT devices and different optical densities (OD). All scans were cropped to show the same area of interest. Normal image size for each device is described in Table 1.

Table 2 shows the thickness measurement results from the $50 \pm 1 \mu\text{m}$ thick layer. The measured thicknesses based on the log-scale image intensity (I_{\log}) values, for images without a filter, ranged between 52.4 and $58.1 \mu\text{m}$, with a mean \pm standard deviation of $54.3 \pm 1.7 \mu\text{m}$ across all 11 devices. All values were above the thickness as declared by the manufacturer. The corresponding thicknesses based on the linear-scale image intensity (I_{linear}) values ranged from 50.3 to $54.6 \mu\text{m}$, with a mean of $52.7 \pm 1.8 \mu\text{m}$ across all devices. Without filter, the linear-scale values were significantly lower than the log-scale values (paired t-test; $P = 0.012$, 95% CI [0.43 2.77]). No obvious monotonic thinning or thickening of the measured layer with the use of filters is noticeable for any of the devices. ANOVA (for filter strengths 0-0.9 and without Topcon Maestro to avoid missing data) showed a statistically significant effect of filter strength ($P = 0.04$), but the corresponding post-hoc comparisons were not significant when Bonferroni corrected paired t-tests were applied. There was a statistically significant difference between analysis methods, when comparing across all filter strengths ($P = 0.016$). The effect of filter strength did not depend on the analysis method (interaction between filter strength and analysis method: $P = 0.85$). We found no significant differences between devices in the log-scale images. For the linear-scale images, there were significant differences between Spectralis 2 and Topcon 1000 ($P = 0.03$) and between Spectralis 1 and Topcon 1000 ($P = 0.03$). The four Spectralis devices gave identical results within the resolution of the approach (as we acquired a single B-scan in these devices,

the resolution of the thickness assessment is equal to pixel size) for filter strengths up to and including 0.6; one of the devices (OCT-1 City UoL) failed for filter strength 1.2 and above and reported a thinner layer at filter strength 0.9.

Table 2. Layer thicknesses obtained from the data acquired with the 11 OCT devices

OD	Thickness from log-scale images I_{\log} (μm)										
	Canon	Nidek	HE OCT-1 QEHB	HE OCT-2 QEHB	HE FLEX QEHB	Opto-vue	Zeiss Cirrus	Topcon 2000	Topcon 1000	HE OCT-1 City UoL	Topcon Maestro
0.0	53	52.7	54.6	58.1	54.6	53.1	54.2	56.3	54.2	54.6	52.8
0.3	54.2	53.8	54.6	54.6	54.6	50.4	53.4	55.4	52.1	54.6	*
0.6	52.1	53.4	54.6	58.1	58.1	50.4	50.6	53.1	51.4	54.6	*
0.9	51.9	52.3	58.1	54.6	58.1	49.4	50.6	52.2	49.3	51.2	*
1.2	50.2	53	58.1	58.1	54.6	48.8	52.6	**	**	**	*
1.5	****	****	58.1	58.1	54.6	52	54.7	**	**	**	*
1.8	****	***	***	***	***	***	***	**	**	**	*
Thickness from linear-scale images I_{linear} (μm)											
0.0	50.3	54.1	54.6	54.6	54.6	51.2	51	53.1	50.8	54.6	50.5
0.3	48	54.1	54.6	54.6	51.2	52.5	54.1	54.5	51.4	51.2	*
0.6	47.3	52	54.6	54.6	54.6	51.2	52.9	54.9	50.5	54.6	*
0.9	48.9	50.5	54.6	54.6	54.6	49.6	52.5	50.3	50.2	47.8	*
1.2	47.9	52.1	58.1	58.1	54.6	48.6	52.1	**	**	**	*
1.5	****	****	54.6	54.6	51.2	50.4	53	**	**	**	*
1.8	****	***	***	***	***	***	***	**	**	**	*

HE = Heidelberg Engineering; the two Spectralis OCT-1 located at City University of London and Queen Elizabeth Hospital Birmingham are identified by "City UoL" and "QEHB" nomenclature respectively; * Could not scan due to automated system; **Nothing visible in the scan; ***Could not fit 3 filters; ****Could not be calculated due to noise.

4. Discussion

Between eleven different OCT machines from six different manufacturers, the thickness measurements are highly comparable when the data are analyzed in an identical manner. Mean thickness without a filter for the 50 μm thick layer was overestimated by a mean of 4.3 μm in the log-scale images and a mean of 2.7 μm in the linear-scale images, showing only a modest overestimation across all devices. Lowering the SNR with a neutral density filter didn't have a clear monotonic thinning or thickening effect on the measured layer.

Thickness measurements of high-reflective layers (like the RNFL) overestimate the real thickness if based on log-scale image intensity, and this overestimation decreases with decreasing signal-to-noise ratio (increasing filter strength). Kinkelder et al found, using a phantom eye with a layer thickness of 49 μm , an overestimation ranging from 13 to 23 μm for different devices [8]. Similarly, thickness measurements of low-reflective layers underestimate the real thickness. This over- and underestimation are less pronounced, and should theoretically disappear completely, if the analysis is based on linear-scale images [19]. The phantom layer addressed in the current study is neither a high-reflective nor a low-reflective layer, but is preceded by a layer with a lower reflectivity and followed by a layer with higher reflectivity [Figs. 1(C), 2(A), 2(C)]. As such, the effect of analysis method (log-scale image versus linear-scale image) on the thickness measurements should be small compared to what has been reported for high-reflective layers, and the effect on the signal-to-noise ratio on the thickness measurements is not self-evident. Indeed, in the current study the differences between the methods and the influence of signal-to-noise ratio

were small; within the small differences, the thickness measurements based on the linear-scale images were in better agreement with the thickness as specified by the manufacturer than those based on the log-scale images. For getting the linear-scale data, it is needed to know the dynamic range of the device. Unfortunately, none of the manufacturers disclosed this information. As the dynamic range is expected to be between 40 and 60 dB [21], we chose to use 50 dB for all scans. To explore the effect of this assumption, we conducted additional analyses with dynamic ranges of 40 and 60 dB, using the Canon HS-100 data for 0.0 OD. Mean thicknesses were 50.6, 50.3, and 50.1 μm for the 40, 50, and 60 dB dynamic range, respectively.

Thickness measurements from different OCT devices are either found to be comparable [24] or not comparable [5,6,25,26] in a clinical setting. Differences in the mean RNFL thickness between Stratus and Spectralis OCT ($106.2 \pm 6.9 \mu\text{m}$ vs $100.0 \pm 7.3 \mu\text{m}$) have been reported, and concluded not to be interchangeable in a clinical evaluation [6]. Agrawal et al. showed that built-in algorithms may be the main cause for differences in the measured layer thicknesses [9]. A reported mean difference between Spectralis and Cirrus devices RNFL thicknesses was 6.7 μm , when device's own software was used, and the thickness difference was reduced to 0.1 μm when custom software was used [5]. In agreement with this, using 3rd party software to measure retinal layers from different OCT devices has been shown to offer good agreement cross-sectionally and longitudinally in MS patients [27]. Other studies found different devices (Spectralis and Cirrus) to agree well (correlation coefficient = 0.912) in measuring the mean RNFL thickness, but the applied correlation coefficient is not the appropriate way to assess agreement. Indeed, they found the means to differ by approximately 5 μm (89.22 ± 15.87 versus $84.54 \pm 13.68 \mu\text{m}$ using Spectralis and Cirrus devices, respectively) [28]. We were not able to use the built-in algorithms (because they were not able to correctly segment the phantom eye layers), but our data confirm that measurements become very similar between devices if a uniform, custom approach is applied.

In order to get the best clinical follow-up for patients, using the same device and the same operator is recommended [25]. This is, however, not always possible, since clinics may have different OCT brands used in daily practice, either simultaneously or during history, and often more than one ophthalmic technician. Currently there are no established protocols between different OCT device manufacturers to allow easy comparison between different brands. Establishing agreement between different OCT devices is needed in order to uniform test results, enabling an accurate between-device longitudinal follow-up. Our study shows that different devices could be comparable if the data from different devices are analyzed similarly. Further improvements could be realized by using, amongst others, standardized ROIs.

The main limitation of this study is that we were unable to compare devices own built in algorithms against our approach. We could not use the devices segmentation results because the layer of interest, shown in Fig. 1(C), does not resemble an anatomical layer the devices would automatically report. The devices built-in algorithms usually only report the total retinal thickness or the thickness of the top three layers (RNFL, GCL and IPL). Future prospect is to image an anatomically correct phantom, with clear distinction in the top layers which the OCT devices built-in software can automatically evaluate, and compare these segmentation results to a custom approach. Phantoms have been shown to mimic the layer thicknesses and the scattering properties of the human eye, but still fall short in accurately describing the full complexity of the real anatomy.

In conclusion, in the case of a phantom eye, our study shows that measurements from different devices can be reliably compared against each other when a custom approach is used to quantify the layer thickness.

Funding

H2020 Marie Skłodowska-Curie Actions (661883).

Disclosures

SR is the owner of Rowe Technical Inc., where the model eye was bought. Other authors declare no conflicts of interest.

References

1. S. Grover, R. K. Murthy, V. S. Brar, and K. V. Chalam, "Comparison of Retinal Thickness in Normal Eyes Using Stratus and Spectralis Optical Coherence Tomography," *Invest. Ophthalmol. Vis. Sci.* **51**(5), 2644 (2010).
2. G. Mylonas, C. Ahlers, P. Malamos, I. Golbaz, G. Deak, C. Schuetze, S. Sacu, and U. Schmidt-Erfurth, "Comparison of retinal thickness measurements and segmentation performance of four different spectral and time domain OCT devices in neovascular age-related macular degeneration," *Br. J. Ophthalmol.* **93**(11), 1453–1460 (2009).
3. U. E. K. Wolf-Schnurrbusch, L. Ceklic, C. K. Brinkmann, M. E. Iliev, M. Frey, S. P. Rothenbuehler, V. Enzmann, and S. Wolf, "Macular thickness measurements in healthy eyes using six different optical coherence tomography instruments," *Invest. Ophthalmol. Vis. Sci.* **50**(7), 3432–3437 (2009).
4. L. M. Brandao, A. A. Ledolter, A. Schötzau, and A. M. Palmowski-Wolfe, "Comparison of Two Different OCT Systems: Retina Layer Segmentation and Impact on Structure-Function Analysis in Glaucoma," *J. Ophthalmol.* **2016**, 1–9 (2016).
5. N. B. Patel, J. L. Wheat, A. Rodriguez, V. Tran, and R. S. Harwerth, "Agreement between retinal nerve fiber layer measures from Spectralis and Cirrus spectral domain OCT," *Optom. Vis. Sci.* **89**(5), E652–E666 (2012).
6. S. N. Arthur, S. D. Smith, M. M. Wright, A. L. Grajewski, Q. Wang, J. M. Terry, and M. S. Lee, "Reproducibility and agreement in evaluating retinal nerve fibre layer thickness between Stratus and Spectralis OCT," *Eye* **25**(2), 192–200 (2011).
7. G. Savini, P. Barboni, M. Carbonelli, A. Sbriglia, G. Deluigi, and V. Parisi, "Comparison of optic nerve head parameter measurements obtained by time-domain and spectral-domain optical coherence tomography," *J. Glaucoma* **22**(5), 384–389 (2013).
8. R. de Kinkelder, D. M. de Bruin, F. D. Verbraak, T. G. van Leeuwen, and D. J. Faber, "Comparison of retinal nerve fiber layer thickness measurements by spectral-domain optical coherence tomography systems using a phantom eye model," *J. Biophotonics* **6**(4), 314–320 (2013).
9. A. Agrawal, J. Baxi, W. Calhoun, C.-L. Chen, H. Ishikawa, J. S. Schuman, G. Wollstein, and D. X. Hammer, "Optic Nerve Head Measurements With Optical Coherence Tomography: A Phantom-Based Study Reveals Differences Among Clinical Devices," *Invest. Ophthalmol. Vis. Sci.* **57**(9), OCT413 (2016).
10. J. Baxi, W. Calhoun, Y. J. Sepah, D. X. Hammer, I. Ilev, T. Joshua Pfefer, Q. D. Nguyen, and A. Agrawal, "Retina-simulating phantom for optical coherence tomography," *J. Biomed. Opt.* **19**(2), 021106 (2013).
11. G. C. F. Lee, G. T. Smith, M. Agrawal, T. Leng, and A. K. Ellerbee, "Fabrication of healthy and disease-mimicking retinal phantoms with tapered foveal pits for optical coherence tomography," *J. Biomed. Opt.* **20**(8), 085004 (2015).
12. A. Agrawal, M. A. Gavrielides, S. Weininger, K. Chakrabarti, and J. Pfefer, "Regulatory perspectives and research activities at the FDA on the use of phantoms with in vivo diagnostic devices," Design and Performance Validation of Phantoms Used in Conjunction with Optical Measurements of Tissue (2008).
13. B. W. Pogue and M. S. Patterson, "Review of tissue simulating phantoms for optical spectroscopy, imaging and dosimetry," *J. Biomed. Opt.* **11**(4), 041102 (2006).
14. G. Savini, P. Barboni, V. Parisi, and M. Carbonelli, "The influence of axial length on retinal nerve fibre layer thickness and optic-disc size measurements by spectral-domain OCT," *Br. J. Ophthalmol.* **96**(1), 57–61 (2012).
15. P. H. B. Kok, T. J. T. P. van den Berg, H. W. van Dijk, M. Stehouwer, I. J. E. van der Meulen, M. P. Mourits, and F. D. Verbraak, "The relationship between the optical density of cataract and its influence on retinal nerve fiber layer thickness measured with spectral domain optical coherence tomography," *Acta Ophthalmol.* **91**(5), 418–424 (2013).
16. C. Y. L. Cheung, C. K. S. Leung, D. Lin, C.-P. Pang, and D. S. C. Lam, "Relationship between retinal nerve fiber layer measurement and signal strength in optical coherence tomography," *Ophthalmology* **115**(8), 1347–1351.e2 (2008).
17. D. W. Lee, J. M. Kim, K. H. Park, C. Y. Choi, and J. G. Cho, "Effect of media opacity on retinal nerve fiber layer thickness measurements by optical coherence tomography," *J. Ophthalmic Vis. Res.* **5**(3), 151–157 (2010).
18. S. Darma, P. H. B. Kok, T. J. T. P. van den Berg, M. D. Abramoff, D. J. Faber, C. A. Hulsman, F. Zantvoord, M. P. Mourits, R. O. Schlingemann, and F. D. Verbraak, "Optical density filters modeling media opacities cause decreased SD-OCT retinal layer thickness measurements with inter- and intra-individual variation," *Acta Ophthalmol.* **93**(4), 355–361 (2015).
19. N. M. Jansonius, J. Cervantes, M. Reddikumar, and B. Cense, "Influence of coherence length, signal-to-noise ratio, log transform, and low-pass filtering on layer thickness assessment with OCT in the retina," *Biomed. Opt. Express* **7**(11), 4490–4500 (2016).
20. N. Nassif, B. Cense, B. Hyle Park, S. H. Yun, T. C. Chen, B. E. Bouma, G. J. Tearney, and J. F. de Boer, "In vivo human retinal imaging by ultrahigh-speed spectral domain optical coherence tomography," *Opt. Lett.* **29**(5), 480 (2004).
21. W. Drexler and J. G. Fujimoto, *Optical Coherence Tomography: Technology and Applications* (Springer, 2015), Chap. 5.
22. M. Zhang, T. S. Hwang, J. Peter Campbell, S. T. Bailey, D. J. Wilson, D. Huang, and Y. Jia, "Projection-resolved optical coherence tomographic angiography," *Biomed. Opt. Express* **7**(3), 816 (2016).

23. Z. Turani, E. Fatemizadeh, Q. Xu, S. Daveluy, D. Mehregan, and M. R. Nasiri Avanaki, "Refractive index correction in optical coherence tomography images of multilayer tissues," *J. Biomed. Opt.* **23**(07), 1–4 (2018).
24. B. B. Tan, M. Natividad, K.-C. Chua, and L. W. Yip, "Comparison of retinal nerve fiber layer measurement between 2 spectral domain OCT instruments," *J. Glaucoma* **21**(4), 266–273 (2012).
25. L. Pierro, M. Gagliardi, L. Iuliano, A. Ambrosi, and F. Bandello, "Retinal nerve fiber layer thickness reproducibility using seven different OCT instruments," *Invest. Ophthalmol. Vis. Sci.* **53**(9), 5912–5920 (2012).
26. J. Huang, X. Liu, Z. Wu, X. Guo, H. Xu, L. Dustin, and S. Sadda, "Macular and retinal nerve fiber layer thickness measurements in normal eyes with the Stratus OCT, the Cirrus HD-OCT, and the Topcon 3D OCT-1000," *J. Glaucoma* **20**(2), 118–125 (2011).
27. P. Bhargava, A. Lang, O. Al-Louzi, A. Carass, J. Prince, P. A. Calabresi, and S. Saidha, "Applying an Open-Source Segmentation Algorithm to Different OCT Devices in Multiple Sclerosis Patients and Healthy Controls: Implications for Clinical Trials," *Mult. Scler. Int.* **2015**, 1–10 (2015).
28. H. Faghihi, F. Hajizadeh, H. Hashemi, and M. Khabazkhoob, "Agreement of two different spectral domain optical coherence tomography instruments for retinal nerve fiber layer measurements," *J. Ophthalmic Vis. Res.* **9**(1), 31–37 (2014).