

University of Groningen

Telemonitoring for Patients With COVID-19

Silven, Anna V; Petrus, Annelieke Hj; Villalobos-Quesada, María; Dirikgil, Ebru; Oerlemans, Carlijn R; Landstra, Cyril P; Boosman, Hileen; van Os, Hendrikus Ja; Blanker, Marco H; Treskes, Roderick W

Published in:
Journal of Medical Internet Research

DOI:
[10.2196/20953](https://doi.org/10.2196/20953)

IMPORTANT NOTE: You are advised to consult the publisher's version (publisher's PDF) if you wish to cite from it. Please check the document version below.

Document Version
Publisher's PDF, also known as Version of record

Publication date:
2020

[Link to publication in University of Groningen/UMCG research database](#)

Citation for published version (APA):

Silven, A. V., Petrus, A. H., Villalobos-Quesada, M., Dirikgil, E., Oerlemans, C. R., Landstra, C. P., Boosman, H., van Os, H. J., Blanker, M. H., Treskes, R. W., Bonten, T. N., Chavannes, N. H., Atsma, D. E., & Teng, Y. O. (2020). Telemonitoring for Patients With COVID-19: Recommendations for Design and Implementation. *Journal of Medical Internet Research*, 22(9), e20953. [20953].
<https://doi.org/10.2196/20953>

Copyright

Other than for strictly personal use, it is not permitted to download or to forward/distribute the text or part of it without the consent of the author(s) and/or copyright holder(s), unless the work is under an open content license (like Creative Commons).

The publication may also be distributed here under the terms of Article 25fa of the Dutch Copyright Act, indicated by the "Taverne" license. More information can be found on the University of Groningen website: <https://www.rug.nl/library/open-access/self-archiving-pure/taverne-amendment>.

Take-down policy

If you believe that this document breaches copyright please contact us providing details, and we will remove access to the work immediately and investigate your claim.

Downloaded from the University of Groningen/UMCG research database (Pure): <http://www.rug.nl/research/portal>. For technical reasons the number of authors shown on this cover page is limited to 10 maximum.

Viewpoint

Telemonitoring for Patients With COVID-19: Recommendations for Design and Implementation

Anna V Silven^{1,2*}, MD; Annelieke H J Petrus^{1,2*}, MD, PhD; María Villalobos-Quesada^{1,2*}, PhD; Ebru Dirikgil³, MD; Carlijn R Oerlemans³, BSc; Cyril P Landstra^{3,4}, MD; Hileen Boosman⁵, PhD; Hendrikus J A van Os^{1,2,6,7}, MD; Marco H Blanker⁸, MD, PhD; Roderick W Treskes⁹, MD, PhD; Tobias N Bonten^{1,2}, MD, PhD; Niels H Chavannes^{1,2}, MD, PhD; Douwe E Atsma^{2,9}, MD, PhD; Y K Onno Teng³, MD, PhD

¹Department of Public Health and Primary Care, Leiden University Medical Center, Leiden, Netherlands

²National eHealth Living Lab, Leiden University Medical Center, Leiden, Netherlands

³Department of Nephrology, Leiden University Medical Center, Leiden, Netherlands

⁴Department of Endocrinology, Leiden University Medical Center, Leiden, Netherlands

⁵Department of Quality and Patient Safety, Leiden University Medical Center, Leiden, Netherlands

⁶Department of Neurology, Leiden University Medical Center, Leiden, Netherlands

⁷Department of Clinical Epidemiology, Leiden University Medical Center, Leiden, Netherlands

⁸Department of General Practice and Elderly Care Medicine, University Medical Center Groningen, Groningen, Netherlands

⁹Department of Cardiology, Leiden University Medical Center, Leiden, Netherlands

* these authors contributed equally

Corresponding Author:

Douwe E Atsma, MD, PhD

Department of Cardiology

Leiden University Medical Center

Albinusdreef 2

Leiden, 2333 ZA

Netherlands

Phone: 31 715262038

Email: d.e.atsma@lumc.nl

Abstract

Despite significant efforts, the COVID-19 pandemic has put enormous pressure on health care systems around the world, threatening the quality of patient care. Telemonitoring offers the opportunity to carefully monitor patients with a confirmed or suspected case of COVID-19 from home and allows for the timely identification of worsening symptoms. Additionally, it may decrease the number of hospital visits and admissions, thereby reducing the use of scarce resources, optimizing health care capacity, and minimizing the risk of viral transmission. In this paper, we present a COVID-19 telemonitoring care pathway developed at a tertiary care hospital in the Netherlands, which combined the monitoring of vital parameters with video consultations for adequate clinical assessment. Additionally, we report a series of medical, scientific, organizational, and ethical recommendations that may be used as a guide for the design and implementation of telemonitoring pathways for COVID-19 and other diseases worldwide.

(*J Med Internet Res* 2020;22(9):e20953) doi: [10.2196/20953](https://doi.org/10.2196/20953)

KEYWORDS

telemonitoring; telemedicine; eHealth; digital health; COVID-19

Introduction

The COVID-19 pandemic has created a difficult challenge for global public health [1]. The clinical presentations of COVID-19 are highly variable, ranging from asymptomatic patients to patients with severe symptoms. Several reports indicate that patients who initially present only mild-to-moderate symptoms

can show a deterioration to severe symptoms over the course of only a few days [2]. Eventually, approximately 5% of patients need respiratory support and intensive care unit admission. Patients with chronic underlying conditions are at an increased risk of such a severe course of illness when infected with COVID-19. Early identification of hypoxia and/or a deterioration of symptoms may be lifesaving [3–5]. However,

in-hospital monitoring of all patients with an increased risk of severe disease puts even more pressure on health care systems that are already overwhelmed.

Telemonitoring offers the opportunity to closely monitor symptoms and vital parameters while a patient remains at home. As such, telemonitoring may enable early identification of deterioration of symptoms and allows for appropriate treatments for each patient with COVID-19. Additionally, telemonitoring may reduce the number of hospital visits and admissions, thereby decreasing the usage of personal protective material, reducing the pressure on health care personnel, and minimizing the risk of viral transmission. Telemonitoring essentially holds the promise of optimizing care for patients with (suspected) COVID-19 infection while ensuring the sustainability of health care capacity and resources for those who need it most urgently [6-8]. However, the development and implementation of a telemonitoring care pathway in the clinical workflow is challenging. The novelty of COVID-19 and the need for rapid action pose additional difficulties. Based on our extensive experiences with telemonitoring for patients with chronic diseases, we developed and implemented a telemonitoring care pathway for patients with (suspected) COVID-19 [6].

In this paper, we present our telemonitoring care pathway as an example and provide general recommendations for the implementation of telemonitoring care programs for patients with (suspected) COVID-19. Hence, the aim of this paper is to serve as a guide for the design and implementation of telemonitoring care pathways in other health care institutions, in order to optimize care and health care capacity worldwide.

The COVID Box: An Example of a Telemonitoring Care Pathway

Aim and Setting

Telemonitoring for patients with (suspected) COVID-19 can be performed in many ways [9]. At our tertiary care hospital, Leiden University Medical Center (LUMC), telemonitoring is broadly applied for the management of several diseases and has been found to be a safe and effective alternative to standard care [6]. Based on this experience, the "COVID Box" telemonitoring care pathway was developed and implemented as standard care for patients with (suspected) COVID-19 over the course of a few weeks (Figures 1 and 2). The aim of this telemonitoring care pathway is to provide optimal care to patients with (suspected) COVID-19, while avoiding (unnecessary) hospitalizations and reducing the duration of hospitalizations.

Figure 1. Types of patient journeys for individuals with (suspected) COVID-19. In the Netherlands, patients are only assessed at the emergency department after referral by their general practitioner or treating medical specialist (indicated by "a"). The treating physician eventually decides which patients are in need for close monitoring (indicated by "b").

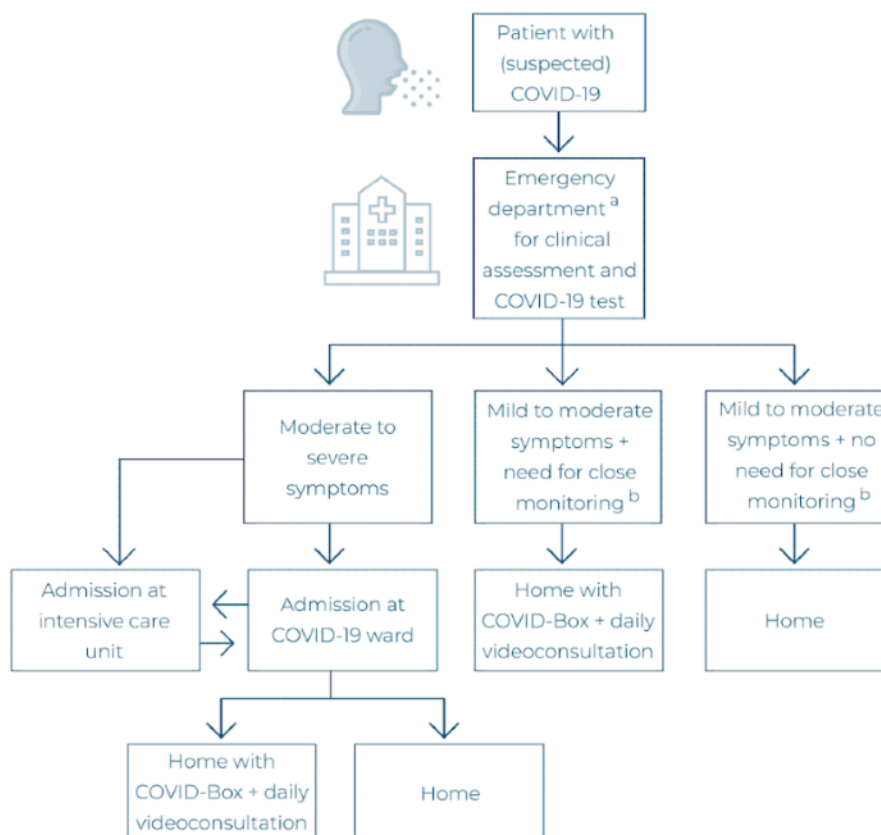
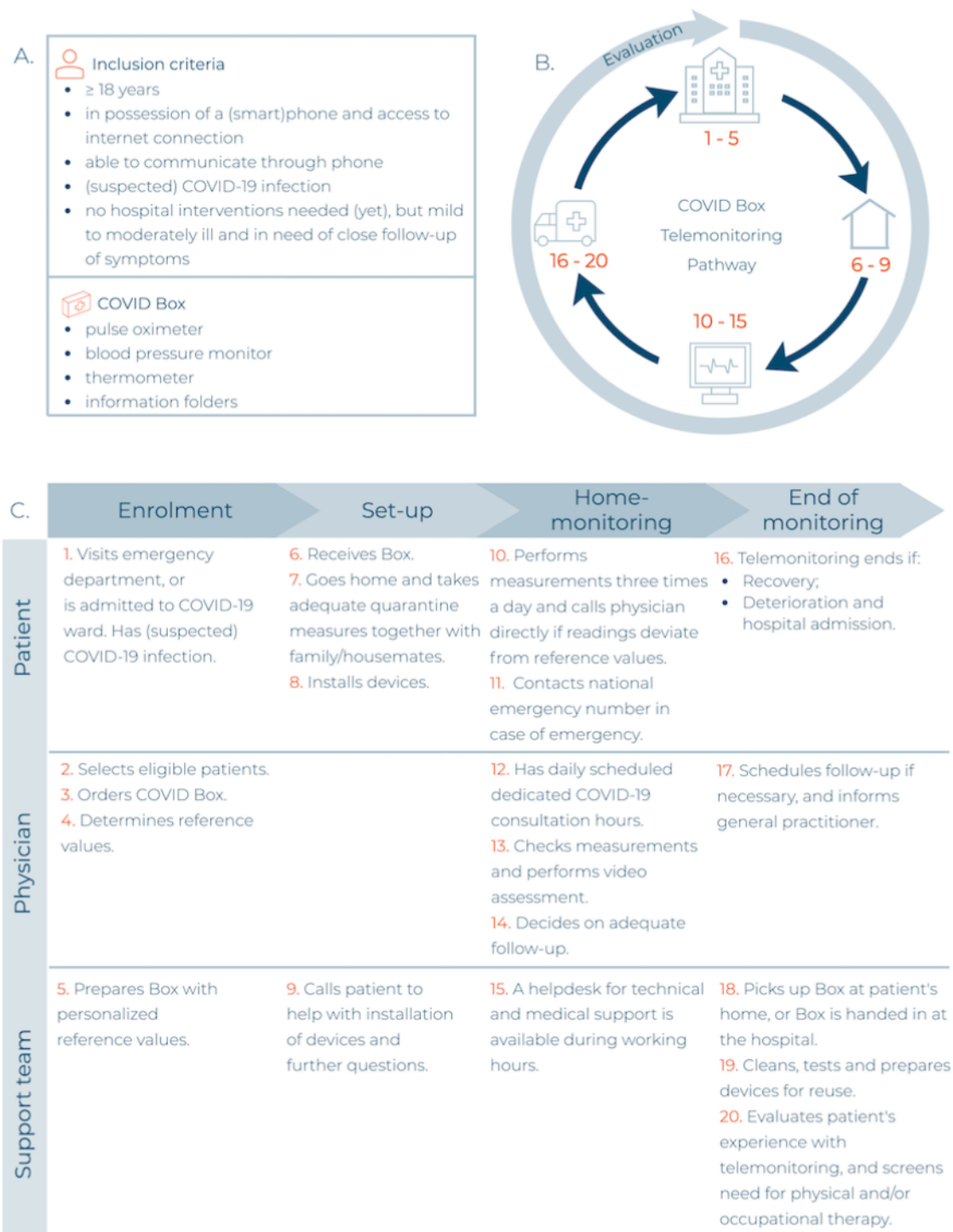




Figure 2. An example of a telemonitoring care pathway—the COVID Box. The COVID Box is a program developed by the Leiden University Medical Center to monitor patients with confirmed or suspected COVID-19 who have an increased risk of severe illness. (A) Inclusion criteria for the COVID Box; (B) general overview of the telemonitoring care pathway including continuous evaluation, where numbers 1-20 correspond to the steps described in (C), which provide a stepwise description of the COVID Box care pathway.



Patient Selection and Eligibility

Patients are selected for telemonitoring when visiting the emergency care department for (suspected) COVID-19 (after referral by their general practitioner), or after admission to the COVID-19 department. Patients are eligible for telemonitoring using the COVID Box in the case of a (suspected) COVID-19

infection and when exhibiting mild-to-moderate symptoms, with a need of close monitoring of vital signs and symptoms, as judged by the treating physician. In addition, psychological and social patient characteristics are taken into account.



Home Monitoring

The COVID Box is literally a box containing a thermometer (Withings Thermo), pulse oximeter (Masimo MightySatRx), blood pressure monitor (Microlife BP B2 Basic or Withings BPM Connect), and a safety bag (for return of the devices). All devices are approved for medical use in Europe.

Patients receiving the COVID Box are instructed to measure their temperature, oxygen saturation, respiratory frequency, heart rate, and blood pressure three times a day. Patients are instructed on the use of the devices, the desired frequency of measurements, and their personalized reference values. A physician or physician assistant (supervised by a medical specialist) performs a daily video consultation to monitor the patient's symptoms and vital parameters, whereas physical consultations are only performed when the physician or physician assistant suspects a deterioration of symptoms. Patients are instructed to contact the hospital if readings deviate from the personalized reference values or if they feel unsure or unwell. In case of an emergency, patients are advised to contact the national emergency number, and for technical support, the hospital's telemonitoring support team should be contacted.

In the first phase of implementation, measurements of vital parameters are collected during the video consultation and entered manually into the patient's electronic medical record (EMR). In the second phase, patients install an app, developed by the LUMC, which is linked to the devices via Bluetooth and transfers the measurements directly into the patient's EMR.

The telemonitoring care pathway ends when patients no longer need home monitoring because symptoms have sufficiently improved, or when patients are admitted to the hospital. At such time, the devices are either picked up from the patient's home or handed in at the hospital. Subsequently, the devices are sterilized, tested, and then reused.

Scientific Evaluation

Between March 1 and June 15, 2020, 55 patients were monitored at home using the COVID Box. Preliminary results of the

evaluation of the telemonitoring program indicate that no adverse events (ie, deaths or emergency hospital admissions) occurred among patients in the telemonitoring care pathway, and that a worsening of symptoms and need for further medical attention could be effectively detected by means of this telemonitoring care program. Eventually, 5 patients (9%) had to be admitted to the hospital due to progression of symptoms. Both patients and health care providers viewed the use of the COVID Box positively. A more detailed overview of the results of the COVID Box will be presented soon.

A prospective registry, which includes all patients who are home monitored using the COVID Box, has been designed. In this registry, baseline patient characteristics, home-monitoring data, patient-reported outcome measures, and clinical outcomes are included. Data from all patients in this registry are periodically evaluated in order to identify any adverse events in a timely manner and improve the telemonitoring care pathway.

Recommendations for the Implementation of a COVID-19 Telemonitoring Care Pathway

The implementation of digital health initiatives has proven to be challenging [10-12]. In the last decade, several frameworks regarding the implementation of digital health have been developed [13-16]. Although these provide useful information, the onset of COVID-19 and the need for a prompt response pose additional challenges [17]. Based on our initial experiences with developing and implementing a COVID-19 telemonitoring care pathway in a tertiary care context and our extensive experience with the implementation of telemonitoring for other diseases, we provide recommendations on clinical, organizational, scientific, and ethical aspects, which can be translated into daily clinical practice (Table 1). These recommendations may also be used to design and implement telemonitoring for the management of other (sub)acute diseases.

**Table 1.** Main recommendations to facilitate the implementation of a COVID-19 telemonitoring pathway.

Topic	Recommendation
Clinical and organizational aspects	
Aim and setting	<ul style="list-style-type: none"> Define the aim of the telemonitoring program Determine whether telemonitoring will help to achieve this aim in this specific setting
Clinical assessment	<ul style="list-style-type: none"> Perform initial in-person assessment (using adequate protective measures) Evaluate the appropriateness of telemonitoring for each patient, based on clinical, psychological, and social patient characteristics
Monitoring	<ul style="list-style-type: none"> Determine which measurements are to be taken Generate personalized reference values and frequency of measurements for each patient Prefer video call over contact by telephone Rely on close supervision of physician rather than automated decision making Communicate to patients which actions to take in case of an emergency
Integration in clinical workflow	<ul style="list-style-type: none"> Involve all stakeholders in the development and implementation process Establish solid and concise training for health care personnel Communicate availability of a telemonitoring pathway within the organization Provide support to avoid extra workload for health care personnel Organize a technical helpdesk for patients Integrate readings into the patient's electronic medical record Evaluate the program continuously
Resources	<ul style="list-style-type: none"> Reuse devices to optimize the use of resources and sustainability of the program Apply for innovation and research grants Discuss possibilities for reimbursement depending on your health financing or insurance system
Scientific aspects	
Implementation	<ul style="list-style-type: none"> Apply scientific evidence obtained from telemonitoring chronic diseases
Evaluation and scientific research	<ul style="list-style-type: none"> Perform scientific evaluation in parallel with the implementation Obtain consent to use patients' data for scientific research
Legal and ethical aspects	
Privacy and data protection	<ul style="list-style-type: none"> Ensure intramural and extramural data security and privacy Comply with legal frameworks and clinical guidelines
Ensuring optimal technical quality	<ul style="list-style-type: none"> Guarantee quality of devices and apps
Consent and informed decisions	<ul style="list-style-type: none"> Ensure that the choice to use telemonitoring is a jointly made decision by both the patient and the physician; respect autonomy and patient preferences Establish responsibilities for each party involved: physician, patient, and telemonitoring team Offer alternative and opt-out options to the patient
Equal opportunities, no discrimination	<ul style="list-style-type: none"> Avoid discrimination, offer equal opportunities, and plan alternative nondigital monitoring pathways

Clinical and Organizational Considerations

Aim and Setting

Implementation of a new health care initiative should contribute to solving a relevant problem. In the case of COVID-19, it should optimize care for patients and relieve pressure on health care systems and professionals. In tertiary care hospitals, most patients have substantial comorbidities and vulnerabilities. As such, these patients require close monitoring and are especially suitable for telemonitoring [5]. Although telemonitoring allows for the management of patients in different settings (eg, assessing a patient's condition and estimating the risk of COVID-19 infection in primary care), it should only be used

in situations where it will add value, such as improving clinical effectiveness or satisfaction of care [9].

Patient Selection and Eligibility

Telemonitoring may allow for accessible and remote monitoring of a large number of patients with (suspected) COVID-19. Due to the outbreak of this new disease, our knowledge of the epidemiology, pathophysiology, and clinical course of COVID-19 is still evolving. Hence, an initial in-person assessment of the patient is recommended, especially in the case of a complex medical history.

When evaluating whether telemonitoring provides a suitable option, patients need to be assessed in a holistic manner. Psychological characteristics may influence a patient's ability



to adequately interpret measurements of vital signs and symptoms or ask for help if necessary. Social aspects, such as a patient's home environment (eg, the possibility for home quarantine), or safety and social support (eg, for elderly patients or patients living alone) should be considered as well. Additionally, patients should feel comfortable with "digital" disease management and be capable of handling devices and interacting via video connection. Although in The Netherlands the majority of patients has access to internet and telephone, this should be asked explicitly [18,19]. Finally, patients with low (digital) health literacy require extra attention [20,21]. In contrast to telemonitoring for patients with chronic diseases, (suspected) COVID-19 patients are not accustomed to self-managing their disease and may be less likely to feel in control. Ultimately, both the physician and the patient should decide together whether remote monitoring is appropriate.

Home Monitoring

Given the recentness of COVID-19 and the relative inexperience with telemonitoring for managing this disease, no golden standard for how, what, and when to monitor yet exists. The use of video over telephone consultation provides extra information on general demeanor, skin color, and severity of dyspnea, and thus helps to establish a solid clinical impression [9]. The rationale to monitor respiratory rate, saturation, temperature, heart rate, and blood pressure from home is based on early warning scores developed in hospital settings [22-24]; higher scores measured outside hospital settings were also found to be associated with poorer clinical outcomes [25]. Measuring vital signs three times a day ensures recognition of gradual deterioration. Similar to in-hospital patient management, the measurement frequency and cut-off values for vital signs should be determined for each patient based on clinical judgment. If a physician decides that a patient's parameters need to be assessed more than three times a day, this might be an indication that the patient should be admitted to the hospital to be monitored more closely. Future research should determine whether the use of continuous monitoring with wireless patches and/or automated cut-off scores could also be effective.

Integration With the Clinical Workflow

Irrespective of the setting, the workflow of health care professionals and supportive personnel should be adapted to a new telemonitoring care pathway. A shift from "traditional" to "digitally assisted" clinical practice is necessary. This requires experience, time, and adequate guidelines. First, solid but concise training and frequent evaluation of the process are required. Health care professionals should be informed about the availability of a telemonitoring care pathway and need dedicated time in their work schedules to follow up on their home-monitored patients. Active involvement of all stakeholders, including health care professionals and patients, in the development and implementation of telemonitoring is likely to contribute to a better support base. The extra workload associated with the development and implementation of a telemonitoring care pathway should be minimized, for example, through dedicated support teams and a helpdesk for technical problems. Finally, for patients, as well as health care professionals, it is neither efficient nor safe to log in to different

systems multiple times a day. Thus, it is essential that data gathered by patients are integrated into the EMR. In addition, EMR integration facilitates the legal obligation of health care professionals to document all clinical information.

Resources

Telemonitoring could contribute to establishing effective, (cost-)efficient and high-quality health care. Nevertheless, it requires the availability of sufficient devices. This can be difficult, since the COVID-19 pandemic resulted in a shortage of resources. Adequate reuse of devices contributes to the optimization of resources and sustainability of the program. In our experience, patients generally hand in the devices in good working order. Additionally, permanent financing is a recurring problem for digital health solutions [15]. Reimbursement policies for telemonitoring programs vary internationally and should be further established [26]. Moreover, innovation budgets may contribute to obtaining the most appropriate devices and services. To generate scientific evidence, the availability of research grants is warranted.

Scientific Considerations

In general, new forms of care need to be evaluated and scientifically validated before large-scale implementation. However, the current COVID-19 pandemic calls for rapid action and scientific data on telemonitoring for (sub)acute diseases and specifically for COVID-19 is scarce. Although this makes development and implementation of such a pathway difficult, we can rely on prior knowledge obtained from telemonitoring for patients with chronic diseases in order to implement telemonitoring programs that are safe and effective [6-8]. Additionally, this lack of scientific evidence underlines the urgent need for the scientific validation of these new forms of care. Scientific validation may not be top priority for health care providers at this time, but lack of validation may lead to a waste of valuable time, energy, and resources if telemonitoring does not lead to the expected benefits [27,28]. As such, scientific validation of safety and efficacy should form a key element in the development and implementation of telemonitoring, and other new forms of care, during a pandemic.

Designing a validation study for COVID-19-related telemonitoring entails several challenges. Randomized controlled trials are difficult in the early phases of a pandemic, and retrospective cohorts, which may serve as control groups, are not available. Under these conditions, assessment of the causal effect of telemonitoring on clinical endpoints is difficult. Scientific validation of the safety and (cost-)effectiveness of telemonitoring by an observational cohort study might be the best option in the early phase of the COVID-19 pandemic. This type of research can be performed in parallel to the implementation process and provides relevant insights into the clinical course of COVID-19. In the future, scientific validation can contribute to the establishment of clinical guidelines for evidence-based telemonitoring.

Ethical Considerations

Telemonitoring involves several parties: physicians, patients, device manufacturers, and health care institutions. When considering ethical aspects, the different roles and



responsibilities of these parties should be taken into account. Additionally, the COVID-19 pandemic demands a careful balance between rapid implementation and thorough ethical and legal evaluation.

Privacy and Data Protection

Telemonitoring brings health care to patients' homes and therefore requires expanding the secure digital perimeter beyond health care facilities. Patients' data need to remain accessible only for the lawful purposes of processing and exclusively to those with granted access.

The primary goal of data collection during telemonitoring is clinical. Personal health data are included in the patient's EMR to directly provide medical treatment. Those granted access are directly involved in the treatment of the patient and are bound to professional confidentiality. Additionally, in our hospital, secondary uses of personal data generated from COVID-19 patients have been anticipated. Accordingly, assumed consent with an opt-out option has been put in place to reuse patients' data for scientific research, a current public health priority [29]. Data obtained from patients will also be used for the evaluation of the COVID Box. From a legal perspective, activities regarding the use of sensitive information must comply with (inter)national regulations.

Ensuring Optimal Technical Quality

The devices and services used for telemonitoring should be user-friendly, trustworthy, validated, and approved, according to national and/or international regulations. Even if certification of quality requires time, it should not be dismissed. For example, at the time of the implementation of the COVID Box, the app had not yet been approved. In order to avoid delaying the implementation without compromising the quality of health care, the team decided to initially enter the data manually in the EMR.

Consent and Informed Decisions

Physicians must be aware that during a health crisis, patients may be under pressure to agree to telemonitoring. Additionally, obtaining informed consent is more complicated for COVID-19-related studies [30]. Patient and physician should engage in a dialogue about the telemonitoring system, the opt-out options, and the alternatives to telemonitoring. The choice to engage in telemonitoring requires patients to commit to a series of daily actions, and they must understand that they will assume a high level of responsibility. Therefore, it should be ensured that telemonitoring actually works in practice for the patient. Experience with current telemonitoring programs at the LUMC has shown that this type of telemonitoring is well accepted by patients and is clinically viable [6].

A telemonitoring system can be either implemented as a monitoring system in which readings are continuously monitored

by the physician, or as a monitoring system in which the physician only monitors the readings once a day. The latter asks for patients to adopt an even higher level of responsibility, as they need to contact the physician themselves in case of deviating measurements. The choice for either monitoring system depends on important factors such as the patient population, the clinical features of the disease, and the local and international medical guidelines and legal frameworks.

Equal Opportunities and No Discrimination

Digital health should never lead to inequality or discrimination [31,32]. In the Netherlands, the possibility that patients lack the necessary technical means for telemonitoring is small [18]. However, this situation is not the same in all countries. Additionally, low literacy regarding (digital) health could be a significant barrier to telemonitoring [33,34]. The availability of an intuitive, readily accessible, and inclusive app, which automatically collects measurements, could be an effective and user-friendly solution to avoid inequality and discrimination. Furthermore, keeping an alternative "analogue" monitoring pathway readily available might contribute to offering equal opportunities to all patients.

Finally, a patient's decision to reject telemonitoring may be based on other personal reasons (eg, lack of privacy at home). Independent of the motives, which may or may not be explained to the physician, the autonomous choice of the patient should be respected.

Conclusion

Innovative digital strategies such as telemonitoring have great potential to improve the management of COVID-19. Telemonitoring may optimize care for patients with COVID-19 by detecting clinical deterioration at an early stage. Additionally, telemonitoring reduces the number of hospital visits and admissions, thereby enabling the efficient use of scarce health care resources and lowering the risk of further transmission of the virus. The direct evidence to support the use of telemonitoring for COVID-19 is still being gathered and analyzed, but preliminary data and previous experiences with other diseases indicate that telemonitoring can be an important tool during the pandemic.

This paper presents a specific telemonitoring care pathway for COVID-19 and offers a set of medical, scientific, organizational, and ethical recommendations. These recommendations may be used as a guide for the design and implementation of telemonitoring for patients with a confirmed or suspected case of COVID-19, and may also be used for the design and implementation of telemonitoring care pathways for other diseases.

Acknowledgments

We thank the COVID Box team at the LUMC, especially CJ Hendriks van de Weem, CMN Marges, FH Soltani, GG Glastra van Loon, GJ de Grooth, K Volz-Brons, L van der Plas, MM van Poele, RE Dam, E Stoop, and S Hendriksen.



Authors' Contributions

DA, NH, HO, RT, AS, AP, and MV were responsible for study conceptualization. AS produced an initial outline. The idea was further established with input from ED, CO, CL, HB, MH, TN, and OT. AS, AP, and MV drafted the paper; it was then revised by all other authors. All authors approved the final version of the article to be published. All authors agree to be accountable for all aspects of the work. They ensure that questions related to the accuracy or integrity of any part of the work will be appropriately investigated and resolved.

Conflicts of Interest

None declared.

References

1. WHO Director-General's opening remarks at the media briefing on COVID-19. World Health Organization. 2020 Mar. URL: <https://www.who.int/dg/speeches/detail/who-director-general-s-opening-remarks-at-the-media-briefing-on-covid-19---11-march-2020> [accessed 2020-04-30]
2. Zhou F, Yu T, Du R, Fan G, Liu Y, Liu Z, et al. Clinical course and risk factors for mortality of adult inpatients with COVID-19 in Wuhan, China: a retrospective cohort study. *The Lancet* 2020 Mar 28;395(10229):1054-1062. [doi: [10.1016/S0140-6736\(20\)30566-3](https://doi.org/10.1016/S0140-6736(20)30566-3)] [Medline: [32171076](https://pubmed.ncbi.nlm.nih.gov/32171076/)]
3. Gandhi RT, Lynch JB, Del Rio C. Mild or Moderate Covid-19. *N Engl J Med* 2020 Apr 24:e. [doi: [10.1056/NEJMcp2009249](https://doi.org/10.1056/NEJMcp2009249)] [Medline: [32329974](https://pubmed.ncbi.nlm.nih.gov/32329974/)]
4. Wang Y, Wang Y, Chen Y, Qin Q. Unique epidemiological and clinical features of the emerging 2019 novel coronavirus pneumonia (COVID-19) implicate special control measures. *J Med Virol* 2020 Jun 05;92(6):568-576 [FREE Full text] [doi: [10.1002/jmv.25748](https://doi.org/10.1002/jmv.25748)] [Medline: [32134116](https://pubmed.ncbi.nlm.nih.gov/32134116/)]
5. Clinical management of severe acute respiratory infection when COVID-19 is suspected. World Health Organization. 2020 Mar. URL: [https://www.who.int/publications-detail/clinical-management-of-severe-acute-respiratory-infection-when-novel-coronavirus-\(ncov\)-infection-is-suspected](https://www.who.int/publications-detail/clinical-management-of-severe-acute-respiratory-infection-when-novel-coronavirus-(ncov)-infection-is-suspected) [accessed 2020-04-26]
6. Treskes RW, van Winden LAM, van Keulen N, van der Velde ET, Beeres SLMA, Atsma DE, et al. Effect of Smartphone-Enabled Health Monitoring Devices vs Regular Follow-up on Blood Pressure Control Among Patients After Myocardial Infarction: A Randomized Clinical Trial. *JAMA Netw Open* 2020 Apr 01;3(4):e202165 [FREE Full text] [doi: [10.1001/jamanetworkopen.2020.2165](https://doi.org/10.1001/jamanetworkopen.2020.2165)] [Medline: [32297946](https://pubmed.ncbi.nlm.nih.gov/32297946/)]
7. Dorsey ER, Topol EJ. State of Telehealth. *N Engl J Med* 2016 Jul 14;375(2):154-161. [doi: [10.1056/NEJMra1601705](https://doi.org/10.1056/NEJMra1601705)] [Medline: [27410924](https://pubmed.ncbi.nlm.nih.gov/27410924/)]
8. Koehler F, Koehler K, Deckwart O, Prescher S, Wegscheider K, Kirwan B, et al. Efficacy of telemedical interventional management in patients with heart failure (TIM-HF2): a randomised, controlled, parallel-group, unmasked trial. *The Lancet* 2018 Sep 22;392(10152):1047-1057 [FREE Full text] [doi: [10.1016/S0140-6736\(18\)31880-4](https://doi.org/10.1016/S0140-6736(18)31880-4)] [Medline: [30153985](https://pubmed.ncbi.nlm.nih.gov/30153985/)]
9. Greenhalgh T, Koh GCH, Car J. Covid-19: a remote assessment in primary care. *BMJ* 2020 Mar 25;368:m1182. [doi: [10.1136/bmj.m1182](https://doi.org/10.1136/bmj.m1182)] [Medline: [32213507](https://pubmed.ncbi.nlm.nih.gov/32213507/)]
10. Alami H, Gagnon MP, Wootton R, Fortin JP, Zanaboni P. Exploring factors associated with the uneven utilization of telemedicine in Norway: a mixed methods study. *BMC Med Inform Decis Mak* 2017 Dec 28;17(1):180 [FREE Full text] [doi: [10.1186/s12911-017-0576-4](https://doi.org/10.1186/s12911-017-0576-4)] [Medline: [29282048](https://pubmed.ncbi.nlm.nih.gov/29282048/)]
11. Choi WS, Park J, Choi JYB, Yang J. Stakeholders' resistance to telemedicine with focus on physicians: Utilizing the Delphi technique. *J Telemed Telecare* 2019 Jul 01;25(6):378-385. [doi: [10.1177/1357633X18775853](https://doi.org/10.1177/1357633X18775853)] [Medline: [29792080](https://pubmed.ncbi.nlm.nih.gov/29792080/)]
12. Ross J, Stevenson F, Lau R, Murray E. Factors that influence the implementation of e-health: a systematic review of systematic reviews (an update). *Implement Sci* 2016 Oct 26;11(1):146 [FREE Full text] [doi: [10.1186/s13012-016-0510-7](https://doi.org/10.1186/s13012-016-0510-7)] [Medline: [27782832](https://pubmed.ncbi.nlm.nih.gov/27782832/)]
13. Greenhalgh T, Wherton J, Papoutsi C, Lynch J, Hughes G, A'Court C, et al. Beyond Adoption: A New Framework for Theorizing and Evaluating Nonadoption, Abandonment, and Challenges to the Scale-Up, Spread, and Sustainability of Health and Care Technologies. *J Med Internet Res* 2017 Nov 01;19(11):e367 [FREE Full text] [doi: [10.2196/jmir.8775](https://doi.org/10.2196/jmir.8775)] [Medline: [29092808](https://pubmed.ncbi.nlm.nih.gov/29092808/)]
14. Mendel P, Meredith LS, Schoenbaum M, Sherbourne CD, Wells KB. Interventions in organizational and community context: a framework for building evidence on dissemination and implementation in health services research. *Adm Policy Ment Health* 2008 Mar;35(1-2):21-37 [FREE Full text] [doi: [10.1007/s10488-007-0144-9](https://doi.org/10.1007/s10488-007-0144-9)] [Medline: [17990095](https://pubmed.ncbi.nlm.nih.gov/17990095/)]
15. Schreiweis B, Pobiruchin M, Strotbaum V, Suleder J, Wiesner M, Bergh B. Barriers and Facilitators to the Implementation of eHealth Services: Systematic Literature Analysis. *J Med Internet Res* 2019 Nov 22;21(11):e14197 [FREE Full text] [doi: [10.2196/14197](https://doi.org/10.2196/14197)] [Medline: [31755869](https://pubmed.ncbi.nlm.nih.gov/31755869/)]
16. Khoja S, Durrani H, Scott RE, Sajwani A, Piryani U. Conceptual framework for development of comprehensive e-health evaluation tool. *Telemed J E Health* 2013 Jan;19(1):48-53. [doi: [10.1089/tmj.2012.0073](https://doi.org/10.1089/tmj.2012.0073)] [Medline: [22957502](https://pubmed.ncbi.nlm.nih.gov/22957502/)]



17. Greenhalgh T, Wherton J, Shaw S, Morrison C. Video consultations for covid-19. *BMJ* 2020 Mar 12;368:m998. [doi: [10.1136/bmj.m998](https://doi.org/10.1136/bmj.m998)] [Medline: [32165352](https://pubmed.ncbi.nlm.nih.gov/32165352/)]
18. Internet; toegang, gebruik en faciliteiten 2019 (The Internet; access, use and facilities 2019). Centraal Bureau voor de Statistiek (Statistics Netherlands). 2019 Oct. URL: <https://opendata.cbs.nl/statline/#/CBS/nl/dataset/83429NED/table?fromstatweb%20voor%20NL> [accessed 2020-04-17]
19. ICT Statistics. International Communication Union. 2019. URL: <https://www.itu.int/en/ITU-D/Statistics/Pages/stat/default.aspx> [accessed 2020-04-24]
20. Norman CD, Skinner HA. eHealth Literacy: Essential Skills for Consumer Health in a Networked World. *J Med Internet Res* 2006 Jun 16;8(2):e9 [FREE Full text] [doi: [10.2196/jmir.8.2.e9](https://doi.org/10.2196/jmir.8.2.e9)] [Medline: [16867972](https://pubmed.ncbi.nlm.nih.gov/16867972/)]
21. Paakkari L, Okan O. COVID-19: health literacy is an underestimated problem. *The Lancet Public Health* 2020 May;5(5):e249-e250 [FREE Full text] [doi: [10.1016/S2468-2667\(20\)30086-4](https://doi.org/10.1016/S2468-2667(20)30086-4)] [Medline: [32302535](https://pubmed.ncbi.nlm.nih.gov/32302535/)]
22. Subbe CP, Kruger M, Rutherford P, Gemmel L. Validation of a modified Early Warning Score in medical admissions. *QJM* 2001 Oct;94(10):521-526. [doi: [10.1093/qjmed/94.10.521](https://doi.org/10.1093/qjmed/94.10.521)] [Medline: [11588210](https://pubmed.ncbi.nlm.nih.gov/11588210/)]
23. Smith GB, Redfern OC, Pimentel MA, Gerry S, Collins GS, Malycha J, et al. The National Early Warning Score 2 (NEWS2). *Clin Med (Lond)* 2019 May;19(3):260 [FREE Full text] [doi: [10.7861/clinmedicine.19-3-260](https://doi.org/10.7861/clinmedicine.19-3-260)] [Medline: [31092526](https://pubmed.ncbi.nlm.nih.gov/31092526/)]
24. Patel R, Nugawela MD, Edwards HB, Richards A, Le Roux H, Pullyblank A, et al. Can early warning scores identify deteriorating patients in pre-hospital settings? A systematic review. *Resuscitation* 2018 Nov;132:101-111 [FREE Full text] [doi: [10.1016/j.resuscitation.2018.08.028](https://doi.org/10.1016/j.resuscitation.2018.08.028)] [Medline: [30171976](https://pubmed.ncbi.nlm.nih.gov/30171976/)]
25. Scott LJ, Redmond NM, Tavaré A, Little H, Srivastava S, Pullyblank A. Association between National Early Warning Scores in primary care and clinical outcomes: an observational study in UK primary and secondary care. *Br J Gen Pract* 2020 Jun;70(695):e374-e380 [FREE Full text] [doi: [10.3399/bjgp20X709337](https://doi.org/10.3399/bjgp20X709337)] [Medline: [32253189](https://pubmed.ncbi.nlm.nih.gov/32253189/)]
26. Ohannessian R, Duong TA, Odone A. Global Telemedicine Implementation and Integration Within Health Systems to Fight the COVID-19 Pandemic: A Call to Action. *JMIR Public Health Surveill* 2020 Apr 02;6(2):e18810 [FREE Full text] [doi: [10.2196/18810](https://doi.org/10.2196/18810)] [Medline: [32238336](https://pubmed.ncbi.nlm.nih.gov/32238336/)]
27. Buijink AWG, Visser BJ, Marshall L. Medical apps for smartphones: lack of evidence undermines quality and safety. *Evid Based Med* 2013 Jun;18(3):90-92. [doi: [10.1136/eb-2012-100885](https://doi.org/10.1136/eb-2012-100885)] [Medline: [22923708](https://pubmed.ncbi.nlm.nih.gov/22923708/)]
28. Huckvale K, Adomaviciute S, Prieto JT, Leow MK, Car J. Smartphone apps for calculating insulin dose: a systematic assessment. *BMC Med* 2015 May 06;13:106 [FREE Full text] [doi: [10.1186/s12916-015-0314-7](https://doi.org/10.1186/s12916-015-0314-7)] [Medline: [25943590](https://pubmed.ncbi.nlm.nih.gov/25943590/)]
29. Novel Coronavirus (nCoV) acute respiratory infection clinical characterisation data tool. World Health Organization. 2020 Feb. URL: https://media.tghn.org/medialibrary/2020/03/ISARIC_COVID-19_CRF_V1.3_24Feb2020.pdf [accessed 2020-04-24]
30. Guidance on the management of clinical trials during the covid-19 (coronavirus) pandemic (Version 3). European Medicines Agency. 2020 Apr. URL: https://ec.europa.eu/health/sites/health/files/files/eudralex/vol-10/guidanceclinicaltrials_covid19_en.pdf [accessed 2020-04-28]
31. van der Kleij RMJJ, Kasteleyn MJ, Meijer E, Bonten TN, Houwink EJJ, Teichert M, et al. SERIES: eHealth in primary care. Part 1: Concepts, conditions and challenges. *Eur J Gen Pract* 2019 Oct;25(4):179-189 [FREE Full text] [doi: [10.1080/13814788.2019.1658190](https://doi.org/10.1080/13814788.2019.1658190)] [Medline: [31597502](https://pubmed.ncbi.nlm.nih.gov/31597502/)]
32. Kim H, Xie B. Health literacy in the eHealth era: A systematic review of the literature. *Patient Educ Couns* 2017 Jun;100(6):1073-1082. [doi: [10.1016/j.pec.2017.01.015](https://doi.org/10.1016/j.pec.2017.01.015)] [Medline: [28174067](https://pubmed.ncbi.nlm.nih.gov/28174067/)]
33. Heijmans M, Brabers A, Rademakers J. Health literacy in Nederland. Nivel. 2018 May 3. URL: <https://nivel.nl/nl/publicatie/health-literacy-nederland> [accessed 2020-04-24]
34. Digital health literacy: how new skills can help improve health, equity and sustainability. EuroHealthNet. 2019. URL: https://eurohealthnet.eu/sites/eurohealthnet.eu/files/publications/PP_Digital%20Health%20Literacy_LR.pdf [accessed 2020-04-24]

Abbreviations

EMR: electronic medical record

LUMC: Leiden University Medical Center



Edited by G Eysenbach, G Fagherazzi; submitted 02.06.20; peer-reviewed by R Tonino, E Metting; comments to author 13.07.20; revised version received 29.07.20; accepted 15.08.20; published 02.09.20

Please cite as:

Silven AV, Petrus AHJ, Villalobos-Quesada M, Dirikgil E, Oerlemans CR, Landstra CP, Boosman H, van Os HJA, Blanker MH, Treskes RW, Bonten TN, Chavannes NH, Atsma DE, Teng YKO

Telemonitoring for Patients With COVID-19: Recommendations for Design and Implementation

J Med Internet Res 2020;22(9):e20953

URL: <https://www.jmir.org/2020/9/e20953>

doi: [10.2196/20953](https://doi.org/10.2196/20953)

PMID:

©Anna V Silven, Annelieke H J Petrus, María Villalobos-Quesada, Ebru Dirikgil, Carlijn R Oerlemans, Cyril P Landstra, Hileen Boosman, Hendrikus J A van Os, Marco H Blanker, Roderick W Treskes, Tobias N Bonten, Niels H Chavannes, Douwe E Atsma, Y K Onno Teng. Originally published in the Journal of Medical Internet Research (<http://www.jmir.org>), 02.09.2020. This is an open-access article distributed under the terms of the Creative Commons Attribution License (<https://creativecommons.org/licenses/by/4.0/>), which permits unrestricted use, distribution, and reproduction in any medium, provided the original work, first published in the Journal of Medical Internet Research, is properly cited. The complete bibliographic information, a link to the original publication on <http://www.jmir.org/>, as well as this copyright and license information must be included.