

University of Groningen

Modulation of Multiple Sclerosis and its Animal Model experimental Autoimmune encephalomyelitis by Food and Gut Microbiota

van den Hoogen, Ward J.; Laman, Jon D.; 't Hart, Bert A.

Published in:
Frontiers in Immunology

DOI:
[10.3389/fimmu.2017.01081](https://doi.org/10.3389/fimmu.2017.01081)

IMPORTANT NOTE: You are advised to consult the publisher's version (publisher's PDF) if you wish to cite from it. Please check the document version below.

Document Version
Publisher's PDF, also known as Version of record

Publication date:
2017

[Link to publication in University of Groningen/UMCG research database](#)

Citation for published version (APA):

van den Hoogen, W. J., Laman, J. D., & 't Hart, B. A. (2017). Modulation of Multiple Sclerosis and its Animal Model experimental Autoimmune encephalomyelitis by Food and Gut Microbiota. *Frontiers in Immunology*, 8, [1081]. <https://doi.org/10.3389/fimmu.2017.01081>

Copyright

Other than for strictly personal use, it is not permitted to download or to forward/distribute the text or part of it without the consent of the author(s) and/or copyright holder(s), unless the work is under an open content license (like Creative Commons).

The publication may also be distributed here under the terms of Article 25fa of the Dutch Copyright Act, indicated by the "Taverne" license. More information can be found on the University of Groningen website: <https://www.rug.nl/library/open-access/self-archiving-pure/taverne-amendment>.

Take-down policy

If you believe that this document breaches copyright please contact us providing details, and we will remove access to the work immediately and investigate your claim.

Downloaded from the University of Groningen/UMCG research database (Pure): <http://www.rug.nl/research/portal>. For technical reasons the number of authors shown on this cover page is limited to 10 maximum.



Modulation of Multiple Sclerosis and Its Animal Model Experimental Autoimmune Encephalomyelitis by Food and Gut Microbiota

Ward J. van den Hoogen¹, Jon D. Laman^{2*} and Bert A. 't Hart^{2,3}

¹ Utrecht University, Utrecht, Netherlands, ² Department of Neuroscience, University Medical Center Groningen, University of Groningen, Groningen, Netherlands, ³ Department of Immunobiology, Biomedical Primate Research Center, Rijswijk, Netherlands

OPEN ACCESS

Edited by:

Jia Sun,
Jiangnan University,
China

Reviewed by:

Lothar Rink,
RWTH Aachen University,
Germany
Gurumoorthy Krishnamoorthy,
Max Planck Institute of
Neurobiology (MPG), Germany

*Correspondence:

Jon D. Laman
j.d.laman@umcg.nl

Specialty section:

This article was submitted
to Nutritional Immunology,
a section of the journal
Frontiers in Immunology

Received: 28 March 2017

Accepted: 21 August 2017

Published: 05 September 2017

Citation:

van den Hoogen WJ, Laman JD and
't Hart BA (2017) Modulation of
Multiple Sclerosis and Its Animal
Model Experimental Autoimmune
Encephalomyelitis by Food
and Gut Microbiota.
Front. Immunol. 8:1081.
doi: 10.3389/fimmu.2017.01081

Multiple sclerosis (MS) is an autoimmune neurological disease characterized by chronic inflammation of the central nervous system (CNS), leading to demyelination, axonal damage, and symptoms such as fatigue and disability. Although the cause of MS is not known, the infiltration of peripherally activated immune cells into the CNS has a key pathogenic role. Accumulating evidence supports an important role of diet and gut microbiota in immune-mediated diseases. Preclinical as well as clinical studies suggest a role for gut microbiota and dietary components in MS. Here, we review these recent studies on gut microbiota and dietary interventions in MS and its animal model experimental autoimmune encephalomyelitis. We also propose directions for future research.

Keywords: prebiotic, probiotic, autoimmunity, immunomodulation, fecal transplant, Food, gut microbiome

APPROACH

PubMed was used as search engine for this review. Combinations of the following keywords were used: microbiota, microbiome, experimental autoimmune encephalomyelitis, multiple sclerosis, probiotic, prebiotic, synbiotic, fecal microbiota transplantation, and diet (see **Box 1**). In addition, preliminary reports acquired from conference abstracts have been used in the case of multiple sclerosis microbiota studies, to increase the amount of studies that our findings are based on. The studies of which only abstracts were available are noted in **Table 3** as author, abstract. Since this article is not

Abbreviations: ADCC, antibody-dependent cell-mediated cytotoxicity; AHR, aryl hydrocarbon receptor; APC, antigen presenting cells; ATP, adenosine 5'-triphosphate; CDC, complement-dependent cytotoxicity; CFA, complete Freund's adjuvant; CNS, central nervous system; CRISPR, clustered regularly interspaced short palindromic repeats; DHA, docosahexaenoic acid; EAE, experimental autoimmune encephalomyelitis; EDSS, expanded disability status scale; EPA, eicosapentaenoic acid; FDC, follicular dendritic cells; FICZ, 6-formylindolo[3-2b]carbazole; GALT, gut-associated lymphoid tissue; GF, germfree; IBD, inflammatory bowel disease; IEL, intraepithelial lymphocytes; ILC, innate lymphoid cells; iNKT, invariant natural killer T cells; ITE 2-(1'H-indole-3'carbonyl)-thiazole-4-carboxylic acid methyl ester; KCV, kanamycin, colistin, and vancomycin; LCFA, long-chain fatty acids; MAIT, mucosa-associated invariant T; MAM, microbial anti-inflammatory molecule; MBP, myelin basic protein; MOG, myelin oligodendrocyte glycoprotein; MRI, magnetic resonance imaging; MS, multiple sclerosis; ODC, oligodendrocyte; PGN, peptidoglycan; PLP, proteolipid protein; PP, primary progressive; PSA, polysaccharide A; RR, relapsing remitting; SCFA, short-chain fatty acids; SFB, segmented filamentous bacteria; SGK-1, serum/glucocorticoid kinase 1; SP, secondary progressive; SPF, specific pathogen-free; TCDD, 2,3,7,8-tetrachlorodibenzo-p-dioxin; TNF, tumor necrosis factor.

BOX 1 | List of definitions used in this article.

Microbiota: "The population of microbes in a given anatomical niche in the human body (11)."

Microbiome: The collective genome of the microbiota (11).

Probiotic: "A live microbial feed supplement which beneficially affects the host animal by improving its microbial balance (154)."

Prebiotic: "Non-digestible food ingredients that beneficially affect the host by selectively stimulating the growth and/or activity of one or a limited number of bacterial species already resident in the colon, and thus attempt to improve host health (155)."

Synbiotic: "A mixture of probiotics and prebiotics that beneficially affects the host by improving the survival and implantation of live microbial dietary supplements in the gastrointestinal tract, by selectively stimulating the growth and/or by activating the metabolism of one or a limited number of health-promoting bacteria, and thus improving host welfare (155)."

a systematic review, the 155 cited articles are a balanced selection out of approximately 200 papers. PubMed was last checked for new articles on July 10, 2017.

INTRODUCTION

Roughly 2.5 million people worldwide are affected by multiple sclerosis (MS), an autoimmune neurological disease of the central nervous system (CNS). Frequently observed symptoms are fatigue, numbness, loss of coordination, vision loss, dizziness, pain, cognitive defects, depression, and bladder and bowel dysfunction (1). MS can lead to serious motoric disability, as approximately 50% of patients require permanent use of a wheelchair 25 years after diagnosis (2). Although the cause of MS is not known, several lines of evidence point to a crucial pathogenic role of the immune system. Genome-wide association studies, neuropathological analyses, and successful therapy trials support the concept that peripheral interactions of environmental risk factors with MS-predisposing genetic factors elicit an autoimmune attack on the CNS causing the formation of lesions. Classically, lesions are defined as usually sharply edged demyelinated areas within the white matter with a variable degree of inflammation, axonal damage, and gliosis. The presence of immune cells (T and B cells, macrophages) and immune molecules (antibodies, complement) supports the characterization of MS as an autoimmune-mediated inflammatory disease.

A growing body of evidence indicates that gut microbiota can modify the incidence and/or course of immune-mediated, extraintestinal diseases (3). Since the gut microbiota are greatly impacted by diet, studies have also started to assess the contribution of gut microbiota and diet in MS and animal models of autoimmune demyelinating diseases such as experimental autoimmune encephalomyelitis (EAE). The aim of this review is to determine whether MS can be treated *via* modification of gut microbiota and dietary components. We describe key players of the immune system that are involved in the pathogenesis of MS, and we discuss how the cross talk of gut microbiota with the immune system can affect the expression of MS/EAE. We then review recent studies on gut microbiota and dietary components in the animal model of EAE and MS patients. We

also review how gut microbiota can be modulated and propose future research topics.

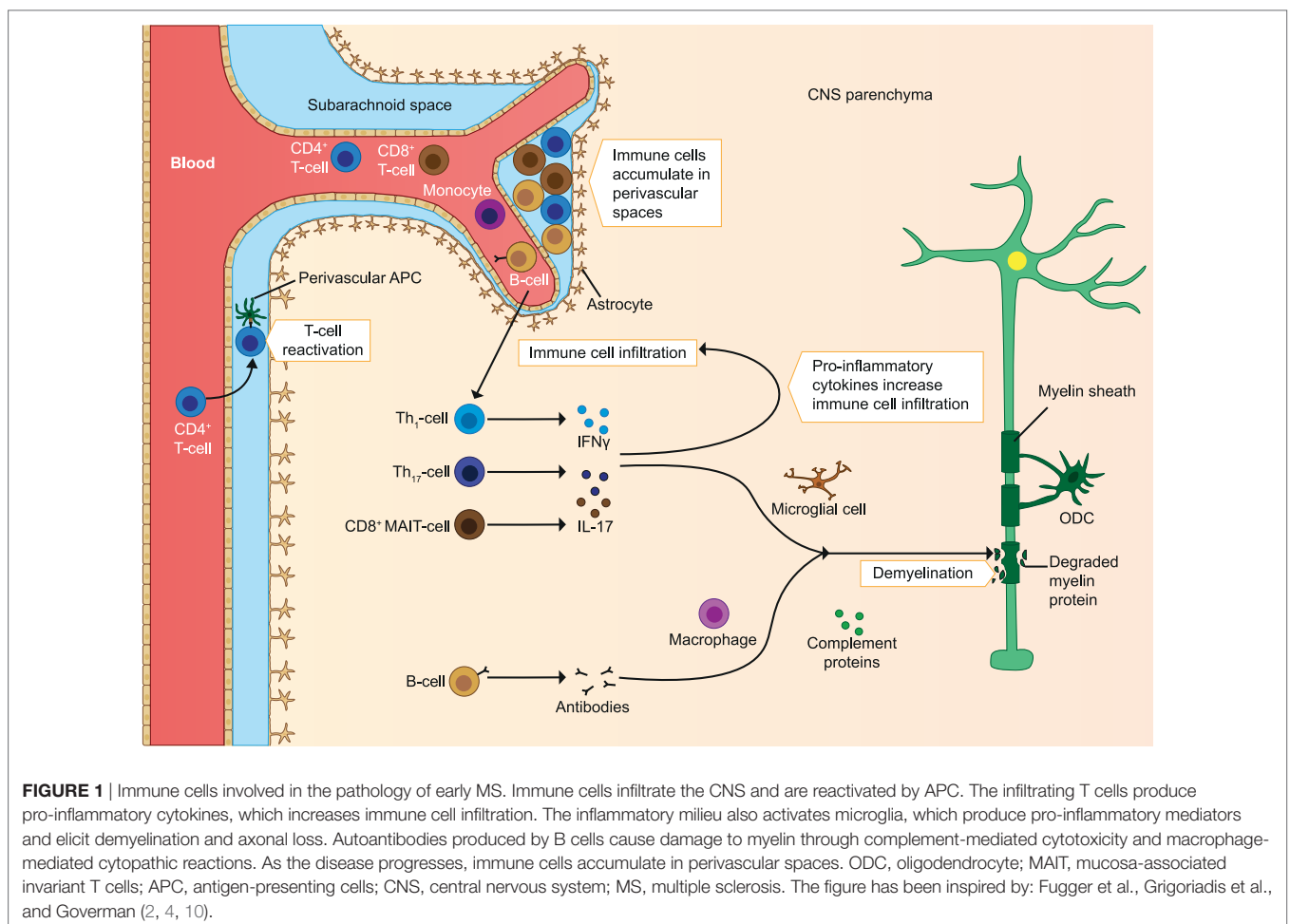
KEY PLAYERS IN MS IMMUNOPATHOLOGY

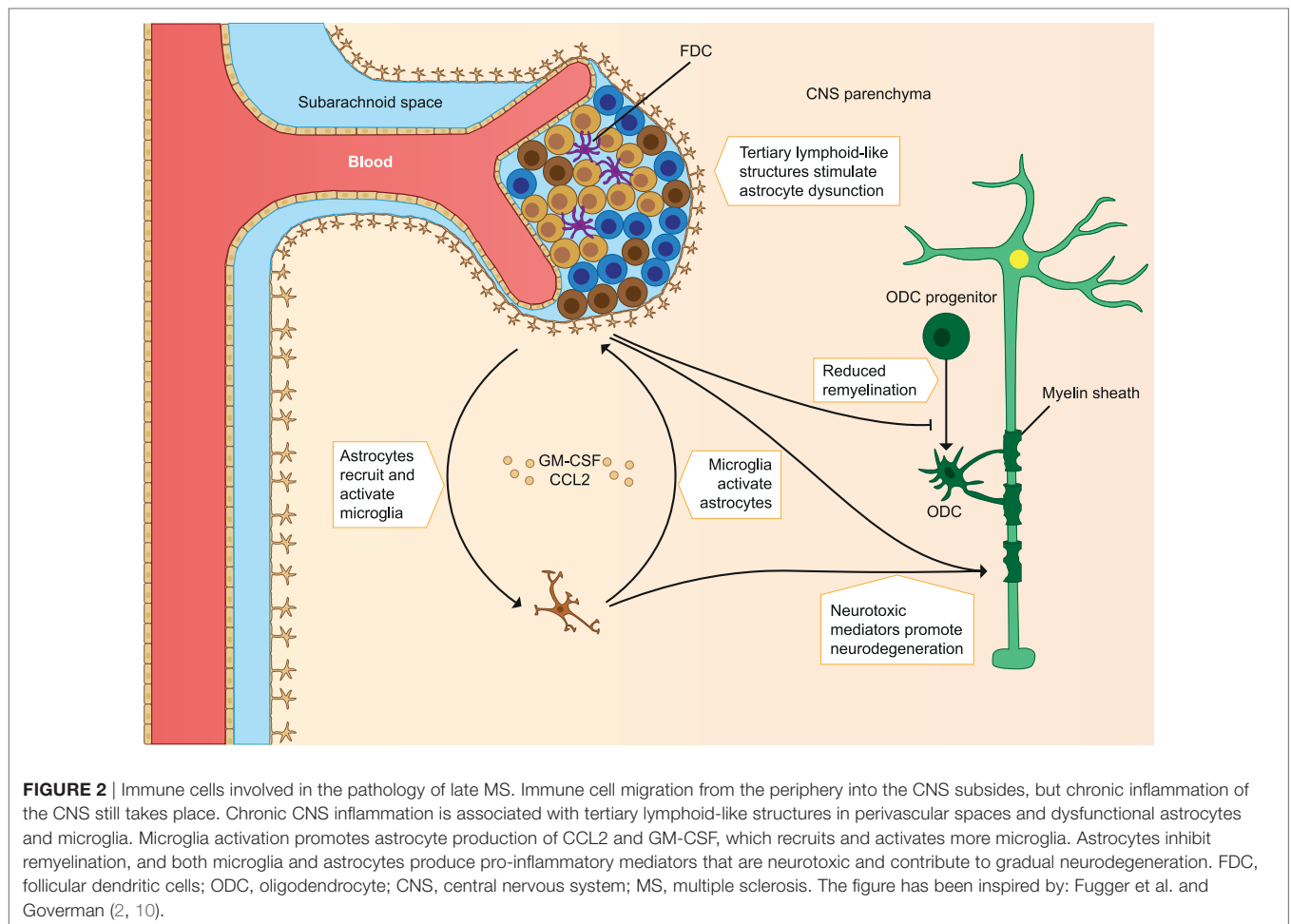
Multiple sclerosis presents itself in several forms of symptoms and disease courses. 85% of patients are diagnosed with relapsing remitting (RR) MS, which is characterized by alternating episodes of neurological symptoms (relapses) and recovery (remissions). During relapses, inflammatory active lesions can be detected in the CNS with imaging techniques, such as magnetic resonance imaging (MRI). As the disease progresses, recovery declines and 80% of RR MS patients develop secondary progressive (SP) MS within 10–20 years after initial diagnosis. SP MS does not come with periods of relapses and recovery, but increased disability gradually occurs along with axonal loss and decreased brain volume (atrophy). 10% of MS patients are diagnosed with primary progressive MS, which presents itself as SP MS directly from the start of the disease (2). The cause of MS is unknown, but various concepts have been proposed to explain disease etiology. An inside-out concept suggests that MS starts as a primary lesion in the CNS, for instance caused by an infection or by primary neurodegeneration inducing the release of self-antigens against which autoreactive T and B cells react. An outside-in concept, supported by animal research in EAE models, postulates that autoreactive T cells that have escaped thymic selection are activated by a peripheral infection. This activation can occur through antigens that closely resemble CNS antigens, bystander activation, novel autoantigen presentation, or recognition of sequestered CNS antigens. In both concepts, activated CD4⁺ T_{H1} and T_{H17} cells infiltrate into the CNS where they can be reactivated by resident antigen-presenting cells (APC), microglia for example. CD4⁺ T_{H1} and T_{H17} produce IFN γ and IL-17A, and the inflammatory reaction that follows increases the permeability of the blood–brain barrier and recruits other immune cells such as B cells and monocytes to the CNS. The inflammatory milieu also activates microglia, which in turn produce pro-inflammatory mediators which elicit demyelination and axonal loss (4). Naïve CD4⁺ T cells infiltrating the CNS can broaden the pattern of autoimmune reactions by epitope spreading, adding to the inflammatory milieu (2). CD8⁺ T cells likely also contribute to MS pathogenesis. They are found in high frequency in demyelinating lesions and correlate with axonal damage. Myelin-specific CD8⁺ T cells can be activated by epitope spreading, and up to a quarter of CD8⁺ T cells in active lesions are thought to be mucosa-associated invariant T (MAIT) cells. MAIT cells are able to produce IL-17 and are associated with the gut and liver (5). MS patients have increased serum levels of IL-18 (6), which activates MAIT cells and is inversely correlated with MAIT cell blood frequency (7). When costimulated by IL-18 and T-cell receptor stimulation, MAIT cells upregulate integrin very late antigen-4, which is involved in cell migration into the CNS (7). In addition, MAIT cells are depleted after efficacious autologous hematopoietic stem cell transplantation, a treatment which can be beneficial in MS patients (8). Therefore, MAIT cells are likely

involved in the immunopathogenesis of MS. The relative significance of the different T cell subsets in human MS is not yet completely understood, as EAE is usually induced *via* complete Freund's adjuvant (CFA), and interspecies immunological differences exist. Additionally, a more predominant CD4⁺ driven disease course is seen in EAE, while a more CD8⁺ T cell-driven immune response is seen in MS (2).

In addition to T cells, autoreactive B cells may be activated in the periphery. B cells infiltrating the CNS locally produce autoantibodies, which bind myelin and cause damage to myelin *via* complement- and/or macrophage-mediated cytopathic reactions (CDC and ADCC). These B cells are also able to migrate out of the CNS and mature in the lymph nodes before migrating back to the CNS (9). Protective T_{reg} cells and their anti-inflammatory effects could also be defective. Protective cells include CD4⁺ Foxp3 expressing T_{reg}, IL-10 producing T_{ri}, and CD39⁺ T_{reg} cells. In MS patients, these cells are found in reduced frequency in the periphery and they have reduced immunosuppressive capacity compared to healthy individuals. Other regulatory cell types could also play a role, as they may increase after treatments. These include the CD8⁺ T_{reg} and IL-10

producing B_{reg} cells. In addition to defective regulatory cells, effector cells may escape their regulation when they are less sensitive to the suppression by T_{reg} cells (2). A clear imbalance of effector cells and regulatory cells is seen in early MS, which leads to a pro-inflammatory milieu in the CNS and promotes demyelination and axonal damage (see **Figure 1**) (2, 4, 10). In later stages of the disease immune cell migration from the periphery into the CNS subsides, but chronic CNS inflammation and neurodegeneration may continue to take place. This is associated with the formation of tertiary lymphoid-like structures within the CNS and associated meninges and with dysfunction of astrocytes and microglia. Microglial activation can promote dysfunction of astrocytes, after which astrocytes inhibit the maturation of myelin producing oligodendrocyte progenitors, resulting in reduced remyelination. Astrocytes can also produce CCL2 and GM-CSF, which further recruits and activates microglia and creates a self-sustaining feedback loop. Pro-inflammatory mediators such as reactive oxygen species (ROS) produced by astrocytes and microglia are neurotoxic, and the continuous CNS inflammation promotes gradual neurodegeneration (2) (see **Figure 2**).





KEY PLAYERS OF THE HUMAN GUT MICROBIOTA

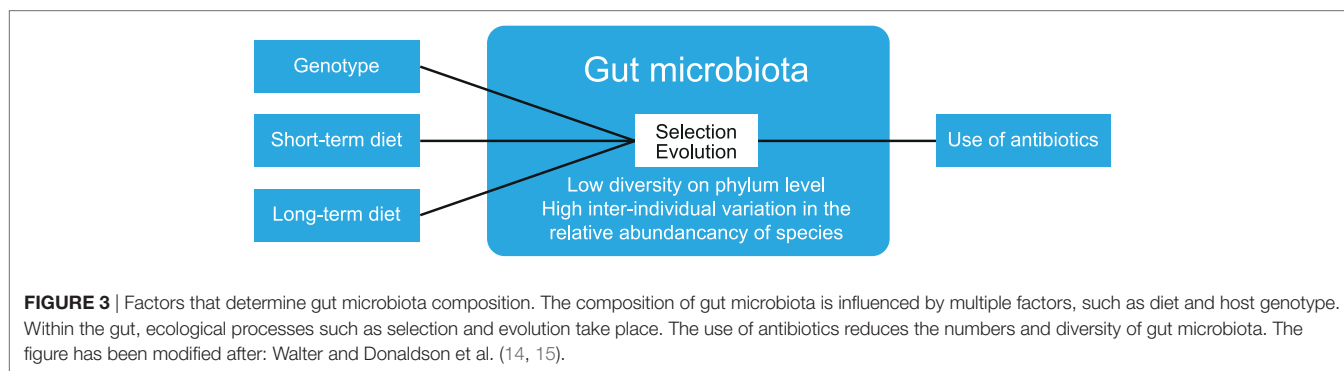
The human gut serves as a host to many microbes (bacteria, archaea, viruses, and fungi). Newborn humans have a sterile gut, and colonization occurs through exposure to new flora depending on the mode of delivery, diet, and hygiene (11). Over the years, the gut microbiota increase in diversity and reach a maximum at adolescence, after which they remain fairly stable (11). The diversity of gut microbiota can be expressed as α -diversity, which shows the richness and distribution of taxa within one population. β -Diversity is used to measure differences between multiple populations, and it measures how many taxa are shared between populations (12). Gut microbiota display a low diversity at the phylum level, as bacteria from only 8 out of 55 phyla have been detected in the human gut (13). Yet, large interindividual variation exists in the relative abundance of microbiota members. This variation is not only greatly impacted by short-term dietary alteration but also influenced by long-term dietary habits, host genotype, and stochastic processes such as history of colonization and ecological processes, such as selection and evolution (14) (see **Figure 3**). Additionally, the use of antibiotics can reduce the number and diversity of gut microbiota,

but these are largely restored to the pretreatment composition after a recovery period (15).

Studies investigating the human gut microbiota often use the sequencing of specific genes such as the 16s ribosomal RNA gene in stool samples to determine which species are present. This has to be interpreted with care, as the microbiota composition differs from the small intestine to the large intestine. The abundance of microbiota is increased along the gastrointestinal tract and while the jejunum is host to mainly aerobic species, the colon is dominated by anaerobic species. Sequencing of stool samples is therefore most informative of microbiota in the large intestine (16).

Bacteria

The gut bacterial flora of healthy adults comprises mainly bacteria from the phyla Firmicutes and Bacteroidetes (16). These bacteria serve many functions. They aid in metabolism and nutrient availability by fermenting complex carbohydrates into short-chain fatty acids (SCFA), which can be used as an energy source by mucosa. Bacteria can also produce vitamins, such as vitamin K and components of certain vitamin B species (17), and play a role in the metabolism of medications. Gut microbiota also aid in the protection against pathogens by competitive exclusion (16, 17). The tremendous contribution of bacteria to



host physiology is best seen in germfree (GF) mice, which have impaired development of the epithelium, musculature, and vasculature of the intestines as well as systemic defects, such as in immune functions and brain development. The gut-associated lymphoid tissue (GALT) is strongly underdeveloped in GF mice, with a reduced number of immune cells and lymph node size. These defects can be restored by colonization with bacteria, indicating the strong influence of bacteria on the host immune system. Conversely, the immune system promotes optimal growth and nutritional benefit and influences the species composition in the gut by the production of secretory IgA antibodies and bactericidal products, such as antimicrobial peptides (defensins and cathelicidins) (18). In addition, epithelial cells are covered by a mucus layer that is continuously consumed by bacteria and renewed by goblet cells (19). This mucus layer also contains peptides which aggregate bacteria but are not bactericidal and functions to keep bacteria at a safe distance from epithelial cells (20). A fiber-deprived diet increases the number and activity of mucus-degrading bacteria, thus reducing the mucus layer and increasing susceptibility to pathogens (21), indicating the importance and interplay of dietary components with microbiota and the immune system.

Archaea

The majority of archaea found thus far in the human body are methanoarchaea, which all produce methane in the absence of oxygen. Because methods to efficiently detect archaea have only recently been developed, insight into the functional role of archaea in the gut is limited. Archaea seem to have a nutritional role as they form syntrophic interactions with bacteria and can favor the growth of fermenting bacteria (22). Archaea may also have immunogenic roles as lipids from *Methanobrevibacter* have powerful adjuvant properties (23) and exposure of monocyte-derived dendritic cells (DC) to archaea strains activates these cells (24).

Viruses

Most studies on viruses in the human gut microbiota focus on DNA viruses, as over 95% of RNA viruses in the human gut are of plant origin and may have little influence on the gut microbiota of human hosts. Among DNA viruses, double-stranded DNA viruses from the order Caudovirales (Podoviridae, Siphoviridae, and Myoviridae) or single-stranded DNA viruses from the family Microviridae (25) have been identified in the

human gut. Viruses can prevent infection of the host epithelium by binding to mucin glycoproteins, thereby limiting bacterial–epithelium adhesion. Additionally, viruses (phages) infect bacteria and exert effects on the host through the modulation of bacteria in the gut. Phages use distinct surface molecules for infecting bacteria, and therefore, have a tropism for specific strains of bacteria. After infection, phages can display a lysogenic phase, in which the phage integrates into the viral genome and stays there in a latent phase, the phage is then called a called prophage. Alternatively, phages can kill bacteria after viral replication which is called the lytic phase. Most gut bacteria are believed to have at least one prophage latently incorporated in their genome, and prophages can enter the lytic phase from a lysogenic phase after exposure to a range of stimuli (13, 25).

Bacteria protect themselves from virus infections by clustered regularly interspaced short palindromic repeats (CRISPR) in their genome. These are short DNA regions that contain foreign virus DNA in between them. When phages infect bacteria, bacteria transcribe the foreign DNA in the CRISPR region, which guides the bacteria to cleave the intruding phage and fight off the infection. During the battle between bacteria and phages, phages may incorporate whole gene segments from previously infected bacteria into bacterial chromosomes. This may disrupt host bacteria genes. Alternatively, the incorporated gene segment may increase bacterial fitness, thereby promoting colonization. Viruses can also introduce toxin-encoding genes into bacteria, which may promote dysbiosis of gut microbiota. Bacteria may use their prophages to their advantage, by producing them for lysis of competitor bacterial species. Finally, viruses can protect the host from overgrowth of dominant bacterial species, by killing bacteria when a high density is reached (13).

THE INFLUENCE OF GUT MICROBIOTA ON EXTRAINTestinal TISSUES

In addition, gut microbiota may influence distant host tissues such as the CNS. Accumulating evidence indicates that gut microbiota affect various behaviors such as social interaction (26), nociceptive responses (27), depression (28), stress responsiveness, and anxiety (29). Gut microbiota also influence hippocampal neurogenesis (30), blood–brain barrier integrity (31), and microglia maturation (32).

Gut microbiota affect the CNS through multiple mechanisms. The gut enteric nervous system controls the motility and homeostasis of the gut, which influences the gut microbiota composition (33). Conversely, gut microbiota influence the enteric nervous system, and the vagus nerve provides a direct communicatory link between the gut and the CNS. Gut microbiota can produce neurotransmitters or precursors such as tryptophan, and microbiota metabolites can also directly influence the brain. For instance, fermenting bacteria produce SCFA, which can translocate into the brain and inhibit deacetylases, resulting in epigenetic changes (32). In addition, bacterial RNA, DNA, and proteins are detected in the human brain (34). Fragments of bacterial cell walls, such as peptidoglycan (PGN) may translocate to the brain and possibly influence brain development and social interaction (35). Bacteria also produce microbial-associated molecular patterns, which can be recognized by the host immune system with pattern recognition receptors, such as Toll- or Nod-like receptors and influence gut physiology (32, 35). The GALT is located along the small and large intestines and functions as immune surveillance of the gut. Gut microbiota can elicit an immune response in the GALT (36), which can be pro-inflammatory or anti-inflammatory, depending on the involved microbiota (37). The pro-inflammatory response of segmented filamentous bacteria (SFB) is best characterized. Studies in mice show that SFB enhance antigen presentation by DC resulting in greatly increased numbers of pro-inflammatory intraepithelial lymphocytes (IEL), such as $\gamma\delta$ T cells and CD8⁺ T cells. SFB also increase IgA⁺ B cells and T_{h17} cells (13, 36). T_{h17} cells produce the cytokines IL-17A, IL-17F, IL-21, and IL-22. IL-17A and IL-17F control bacterial and fungal infections through the recruitment of neutrophils and more T_{h17} cells and increased production of β -defensin by epithelial cells. IL-22 induces epithelial cell proliferation, survival, tissue repair, and increased expression of antimicrobial molecules (13). In addition, gut bacteria such as *Helicobacter hepaticus* elicit a pro-inflammatory response, marked by increased numbers of T_{h17} and T_{h1} cells and pro-inflammatory cytokines excretion (38). T_{h1} cells are instrumental in fighting intracellular bacteria and viruses, *via* the production of IFN γ (13).

Gut microbiota are potent activators of innate lymphoid cells (ILC). ILC arise from common lymphoid precursors and respond rapidly to cytokines produced by the epithelium. ILC can be divided into three groups based on molecular markers: type 1 which expresses T box transcription factor (TBX21 or T-bet) in T cells, type 2 which expresses GATA binding protein and type 3 which expresses retinoid-related orphan receptor (ROR) γ t. Type 3 ILC produce IL-17 and IL-22, and IL-22 production can be induced by bacterial metabolites acting on the aryl hydrocarbon receptor (AHR) (17). The pro-inflammatory reactions caused by gut microbiota may contribute to MS pathogenesis *via* the activation of autoreactive T-cells (36). Conversely, gut microbiota may also elicit an anti-inflammatory response, characterized by the induction of CD4⁺ T_{reg} cells. T_{reg} cells produce TGF- β and IL-10, which decrease pro-inflammatory cytokine production and cell proliferation. Clostridia species promote production of TGF- β , which helps maintain an anti-inflammatory milieu and is involved in the induction of T_{reg} cells (13, 36). Additionally,

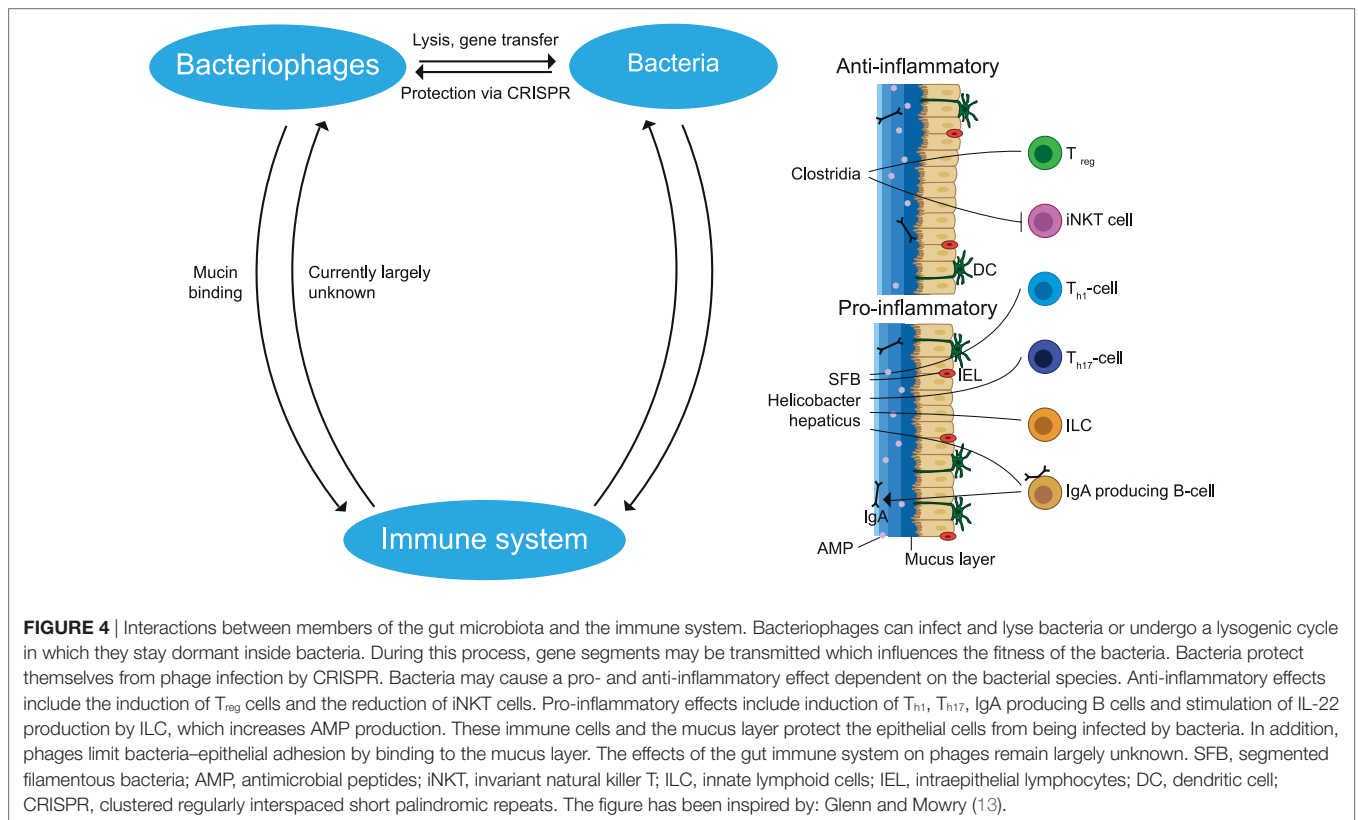
Bacteroides species increase the production of anti-inflammatory cytokines and suppress IL-17 production (36).

Gut microbiota also affect invariant natural killer T cells (iNKT cells); GF mice have increased iNKT cell numbers in their colon. These are a pro-inflammatory subset of T cells that express the invariant T-cell receptor α , with which they detect lipid antigens presented by CD1d molecules. They can promote T_{h1} and T_{h17} responses by producing IFN γ , IL-2, IL17A and tumor necrosis factor (TNF) (13).

THE INFLUENCE OF PHAGES ON THE IMMUNE SYSTEM

The influence of phages on the immune system is likely mostly indirect, through modulation of bacteria by mechanisms mentioned earlier. Phages may also directly communicate with the immune system. Humans are constantly sensitized with phage antigens present in food. This induces a constant low level of phage-neutralizing antibodies in human serum. After systemic phage administration in animals, these neutralizing antibodies are produced at higher titers. In humans, administration of enterobacteria PhiX174 phages induced IgM antibodies, followed by IgG antibodies after a second exposure (39). The function of antibodies is clearance of phages as illustrated by the lower clearance in B cell-deficient mice. A reduction of macrophages, natural killer, or T cells does not influence phage clearance (40). Conversely, phages can influence T cell functions *in vitro*. Mycobacteriophages were found to suppress phytohemagglutinin-induced activation of T lymphocytes from guinea pigs in a dose-dependent matter (41). Moreover, purified T4 phages can inhibit human T cell proliferation *via* the CD3 T-cell receptor complex, while phage lysates of *Staphylococcus aureus* can induce T-cell proliferation (41). In addition, phages can affect host phagocytes. Phagocytosis and ROS production may limit bacterial densities in the gut. Excessive phagocyte activity may also lead to pathology. Preincubation of monocytes and neutrophils with T4 and F8 phages from *Pseudomonas aeruginosa* reduced *in vivo* phagocytosis of *Escherichia coli*. T4 phages also reduced the ROS production by phagocytes exposed to LPS and bacterial cells, although this effect may be phage strain-dependent, because staphylococcal A3/R-purified phage (lysates) did not affect ROS production (41). The effect of phages depends also on the type of preparation, as T4 lysates promote IL-6 production by monocytes but purified T4 phages do not (41). Most effects of phages are anti-inflammatory, as reflected by mitigated phagocytosis, ROS production, and lymphocyte proliferation. However, phage lysates of *S. aureus* are likely more pro-inflammatory. Overall, effects of phages on the host immune system are complex and depend on phage identity, phage tropism, and preparation.

Collectively, variable exposure to the environment and food greatly influences gut microbiota composition. Elements of the gut microbiota constantly interact with each other and with the host and are essential for the normal development of the immune system and CNS. Pro- and anti-inflammatory effects have been attributed to different microbial species and an imbalance may contribute to autoimmune disease may contribute to autoimmune disease (see **Figure 4**).



EAE MODELS

Due to the inaccessibility of the CNS of MS patients, animal models are used for translational research into the pathogenesis of MS and for therapy development. As in none of the available models the immunological and pathological complexity of MS is fully replicated, multiple models are being used. Depending on the research question models of MS-like demyelination are induced chemically (cuprizone, lysolecithin), with neurotropic viruses (Theiler's murine encephalitis virus, Semliki Forest virus), through specific cytokine overexpression in the CNS, diphtheria toxin-based depletion of oligodendrocytes, and active immunization with myelin components in suitable adjuvants (42, 43). The active immunization model, known as EAE, is the most widely used preclinical MS model. EAE can be induced in a wide variety of laboratory animal species including mice, rats, rabbits, guinea pigs, and non-human primates by inoculation of myelin antigens formulated with a strong adjuvant, such as CFA. For synchronous EAE induction at high incidence in mice, the immunization is usually supplemented with injection of *Bordetella pertussis* toxin. Different myelin antigens and dosages are used to model the heterogeneity of MS. For example, SJL mice develop a RR type of EAE after sensitization against residues 79–87 of myelin basic protein (MBP_{79–87}) or residues 131–151 of proteolipid protein (PLP_{131–151}). C57Bl/6 mice can develop RR EAE after immunization with a low dose of myelin oligodendrocyte glycoprotein residues 35–55 (MOG_{35–55}) and develop chronic EAE without remission upon immunization

with a high dose of MOG_{35–55} (44). It is increasingly felt that the usage of strong adjuvants precludes a role of subtle regulatory mechanisms. For such studies, passive EAE models induced by the transfer of activated T cells from a donor with actively induced EAE or spontaneous EAE models established in mice expressing transgenic T and/or B cell receptors specific for myelin antigens may be more useful (43).

Although EAE models have proven their relevance as a preclinical test system for new therapeutics they also have their limitations. The highly artificial way by which the autoimmune process is activated in CFA-based EAE models does not necessarily reflect the natural immune response toward self-antigens. As an illustration, the EAE model is dominated by $CD4^+$ T cells, whereas $CD8^+$ T cells are likely more immunodominant in MS patients (44). Another difference between EAE and MS is that mice with EAE mostly show lesions in the spinal cord, whereas MS patients mostly show lesions in the brain (43). A noticeable exception is formed by the atypical EAE models in marmosets, a small-bodied Neotropical primate, which more closely approximate MS with respect to clinical, pathological, and immunological presentation (45).

GUT MICROBIOTA-BASED INTERVENTIONS IN EAE MODELS

The first evidence that gut microbiota are involved in the pathogenesis of EAE stems from decades ago. Already in 1993, it

TABLE 1 | The role of gut microbiota in EAE.

Reference	Animal model	Intervention	Clinical score	Immune response
Berer et al. (47)	SJL anti-MOG ₉₂₋₁₀₆ TCR ^{tg}	Germfree housing	Protected	Reduced T _{H17} , impaired B-cell recruitment to brain-draining lymph nodes Reduced anti-MOG B cell response
Lee et al. (48)	C57Bl/6 MOG ₃₅₋₅₅	Germfree housing	Decreased	Reduced T _{H1} and T _{H17} , increased T _{reg} Reduced DC capacity to induce T _{H1} and T _{H17} responses
Yokote et al. (49)	C57Bl/6 MOG ₃₅₋₅₅	Broad spectrum antibiotics	Decreased	Decreased pro-inflammatory cytokines, decreased T _{H17}
Ochoa-Repáraz et al. (50)	SJL PLP ₁₃₉₋₁₅₁ ; C57Bl/6 MOG ₃₅₋₅₅	Broad spectrum antibiotics	Decreased	Reduced pro-inflammatory cytokines, increased T _{reg} Increased CD11c ^{high} CD103 ⁺ cells
Ochoa-Repáraz et al. (51)	C57Bl/6 MOG ₃₅₋₅₅	Broad spectrum antibiotics	Decreased	Increased IL-10 producing CD5 ⁺ B-cells Shift from T _{H1} and T _{H17} toward T _{H2} response
Ochoa-Repáraz et al. (52)	SJL PLP ₁₃₉₋₁₅₁	Oral administration of <i>Bacteroides fragilis</i>	Decreased	Increased T _{reg} , reduced T _{H17}
Ochoa-Repáraz et al. (52)	SJL PLP ₁₃₉₋₁₅₁	Oral administration of PSA ^{-/-} <i>B. fragilis</i>	Normal	Normal
Ezendam et al. (53)	Lewis rats MBP	Oral administration of <i>Bifidobacterium animalis</i>	Decreased duration	Not investigated
Lavasan et al. (54)	C57Bl/6 MOG ₃₅₋₅₅	Oral administration of three <i>Lactobacilli</i> strains	Decreased	Reduced T _{H1} and T _{H17} , increased T _{reg} , IL-10 dependent
Takata et al. (55)	C57Bl/6 MOG ₃₅₋₅₅ ; SJL PLP ₁₃₉₋₁₅₁	Oral treatment with heat-killed <i>Pediococcus acidilactici</i>	Decreased	Reduced T _{H1} and T _{H17} , increased T _{reg}
Maassen and Claassen (56)	Lewis rats MBP; SJL PLP ₁₃₉₋₁₅₁	Oral treatment with commercially available probiotic drinks containing <i>Lactobacillus casei</i>	Decreased in Lewis rats, no effect in SJL model	Not investigated
Kwon et al. (57)	C57Bl/6 MOG ₃₅₋₅₅	Oral administration of <i>Bifidobacterium bifidum</i> , <i>Streptococcus thermophilus</i> and three <i>Lactobacillus</i> strains	Decreased	Reduced T _{H1} and T _{H17} response, increased T _{reg}
Rezende et al. (58)	C57Bl/6 MOG ₃₅₋₅₅	Oral administration of recombinant HSP65-producing <i>Lactococcus lactis</i> ⁹⁹	Decreased	Decreased IL-17, increased IL-10, dependent on increased CD4 ⁺ LAP ⁺ T _{reg}
Wang et al.; Ochoa-Repáraz et al. (59–61)	SJL PLP ₁₃₉₋₁₅₁ ; C57Bl/6 MOG ₃₅₋₅₅	Oral treatment with <i>B. fragilis</i> -produced PSA	Decreased	Reduced T _{H1} and T _{H17} , increased T _{reg} and CD103 ⁺ DC, increased CD39 ⁺ T _{reg}
Kadowaki et al. (62)	2D2 anti-MOG TCR ^{tg} ; C57Bl/6 MOG ₃₅₋₅₅	Adoptive transfer of CD4 ⁺ induced IEL	Decreased	Reduced T _{H17} CD4 ⁺ induced IEL are dependent on gut microbiota and diet
Maassen et al. (63)	Lewis rats, MBP ₇₂₋₈₅	Oral administration of live/intranasal administration of soluble cell extracts from myelin proteins producing <i>L. casei</i>	Decreased, extracts from guinea pig MBP producing bacteria increased	Not investigated

Germfree housing, antibiotics, probiotics, and bacterial products affect the EAE clinical score.

DC, dendritic cells; EAE, experimental autoimmune encephalomyelitis; IEL, intraepithelial lymphocytes; MBP, myelin basic protein; MOG, myelin oligodendrocyte glycoprotein; PLP, proteolipid protein; PSA, polysaccharide A.

was discovered that transgenic mice expressing T-cell receptors specific for MBP fail to develop EAE when they were housed in a sterile, specific pathogen-free (SPF) environment, while mice housed in a non-sterile environment did develop EAE (46). To determine the role of gut microbiota in EAE, GF models, antibiotic treatments, probiotic mixtures, bacterial products, and diet-based interventions have been used. These studies are summarized in **Tables 1** and **2**.

GF Models

Germfree mice, which are bred and raised in a sterile environment, display significantly attenuated disease in both

spontaneous and actively induced EAE models (47, 48). In the actively induced EAE model, GF mice develop EAE at a reduced incidence, while in mice developing overt disease, symptoms are milder and of shorter duration compared to conventionally colonized mice. This has been attributed to reduced mesenteric lymph node DC capacity to induce T_{H1} and T_{H17} responses. GF mice have reduced IL-17 and IFN γ producing CD4⁺ T cells in their spinal cord. This is accompanied by increased CD4⁺CD25⁺Foxp3⁺ T_{reg} cells in draining lymph nodes and spleen. Compared to GF mice, monoclonization with SFB significantly increases EAE clinical scores, with increased IL-17 and IFN γ production in the small intestines and spinal cord

TABLE 2 | Dietary interventions in EAE.

Reference	Animal model	Intervention	Clinical score	Immune response
Haghikia et al. (64)	C57Bl/6 MOG ₃₅₋₅₅	Oral administration of propionic acid (short-chain fatty acid) and lauric acid (long-chain fatty acid)	Decreased	Increased T _{reg} , reduced T _{H17} on PA treatment Increased T _{H1} and T _{H17} , decreased <i>Prevotellaceae</i> and <i>Bacteroidetes</i> on lauric acid treatment
Lemire and Archer (65)	SJL spinal cord homogenate	Intraperitoneal vitamin D administration	Decreased	Reduced antibodies against MBP
Cantorna et al. (66)	B10.PL MBP ₇₉₋₈₇	Dietary vitamin D supplementation	Decreased	Not investigated
Spach et al. (67)	C57Bl/6 MOG ₃₅₋₅₅	Dietary vitamin D supplementation	Decreased	Reduced inflammatory cells, IFN γ in the spinal cord, IL-10 dependent
Piccio et al. (68)	SJL PLP ₁₃₉₋₁₅₁ ; C57Bl/6 MOG ₃₅₋₅₅	40% caloric restriction	Decreased	Increased plasma levels of corticosterone, adiponectin, reduced plasma levels of IL-6 and leptin
Esquifino et al. (69)	Lewis rats spinal cord homogenate	33 and 66% caloric restriction	66% caloric restriction protected from EAE signs	Reduced splenic CD8 ⁺ T cells and B cells, reduced lymphoid and thymic CD4 ⁺ T cells and B cells and IFN γ production
Kafami et al. (70)	C57Bl/6 MOG ₃₅₋₅₅	Intermittent feeding	Decreased	Not investigated
Harbige et al. (71)	SJL MOG ₉₂₋₁₀₆	Oral γ -linolenic acid treatment	Decreased	Increased TGF- β , prostaglandin E ₂ production by spleen mononuclear cells
Harbige et al. (72)	Lewis rats, guinea pig spinal cord homogenate	Oral γ -linolenic acid treatment	Decreased	Not investigated
Kong et al. (73)	C57Bl/6 MOG ₃₅₋₅₅	DHA-rich diet	Decreased	Reduced T _{H1} and T _{H17} cell differentiation, reduced amounts of T _{H1} , T _{H17} found in the spleen and spinal cord of mice on a DHA-rich diet. <i>In vitro</i> , DHA reduced the expression of costimulatory molecules on DC and reduced their production of pro-inflammatory cytokines
Unoda et al. (74)	C57Bl/6 MOG ₃₅₋₅₅	EPA supplementation	Decreased	Increased expression of PPAR α , β , and γ on CD4 ⁺ T cells in the spinal cord, reduced IFN γ and IL-17 cytokine production. CD4 ⁺ T cells from the spleen of EPA-treated mice expressed increased mRNA levels of Foxp3, but also of IL-17 and ROR γ t
Salvati et al. (75)	Dark agouti rats, guinea pig spinal cord homogenate	EPA supplementation	Delayed time before EAE symptoms appeared	Increased myelination of axons in the spinal cord
Kim et al. (76)	C57Bl/6 MOG ₃₅₋₅₅	Ketogenic diet	Decreased	Reduced T _{H1} , T _{H17} , and pro-inflammatory cytokines
Choi et al. (77)	C57Bl/6 MOG ₃₅₋₅₅	Cycles of fasting Ketogenic diet	Decreased	Fasting increased T _{reg} , corticosterone, reduced CD11 ⁺ DC, T _{H1} , T _{H17} , pro-inflammatory cytokines Ketogenic diet: not investigated
Jörg et al. (78)	C57Bl/6 MOG ₃₅₋₅₅	High-salt diet	Increased	Increased T _{H17}
Krementsov et al. (79)	C57Bl/6 MOG ₃₅₋₅₅ , SJL PLP ₁₃₅₋₁₅₁	High-salt diet	Increased in C57Bl/6 mice, in SJL only increased in females	No difference in T _{reg} , T _{H1} , and T _{H17} cells
Wu et al. (80)	C57Bl/6 MOG ₃₅₋₅₅	High-salt diet	Increased	Increased T _{H17} in CNS and mesenteric lymph nodes, SGK-1 signaling dependent
Kleinewietfeld et al. (81)	C57Bl/6 MOG ₃₅₋₅₅	High-salt diet	Increased	Increased inflammatory cell infiltration into the CNS, increased T _{H17}
Veldhoen et al. (82)	C57Bl/6 MOG ₃₅₋₅₅	FICZ administration	Increased	Increased IL-17- and IL-22-producing CD4 ⁺ T cells in the spinal cords
Quintana et al. (83)	C57Bl/6 MOG ₃₅₋₅₅	FICZ, ITE, TCDD administration	FICZ increased, ITE and TCDD reduced	FICZ: increased IL-17 ⁺ CD4 ⁺ and IFN γ ⁺ CD4 ⁺ T cells in the spleen TCDD: increased Foxp3 ⁺ T _{reg}
Rothhammer et al. (84)	C57Bl/6 MOG ₃₅₋₅₅	Tryptophan-deficient diet, supplementation with tryptophan metabolites and tryptophanase	Increased, supplementation reduced EAE scores	IFN-1 signaling induces AHR expression in astrocytes, supplementation does not reduce EAE scores in astrocyte-specific AHR knockout mice

(Continued)

TABLE 2 | Continued

Reference	Animal model	Intervention	Clinical score	Immune response
Stoye et al. (85)	SJL PLP ₁₃₉₋₁₅₁	Intraperitoneal injection of ZnAsp	Decreased, but increased on high doses	Reduced proliferation of stimulated human T-cells, reduced pro-inflammatory cytokine production
Schubert et al. (86)	SJL PLP ₁₃₉₋₁₅₁	Oral ZnAsp supplementation	Decreased, but increased on high doses	Reduced proliferation of stimulated human T-cells, reduced pro-inflammatory cytokine production
Kitabayashi et al. (87)	C57Bl/6 MOG ₃₅₋₅₅	Oral Zink supplementation	Decreased	Not investigated
Rosenkranz et al. (88)	C57Bl/6 MOG ₃₅₋₅₅	Intraperitoneal injection of ZnAsp	Decreased	Reduced systemic T _{H17} cells and increased Foxp3 ⁺ T-cells in the spinal cord
Scelsi et al. (89)	Guinea pigs, spinal cord homogenate	Oral selenium supplementation	Increased on high doses, normal on normal doses	Not investigated
Chanaday et al. (90)	Wistar rats, whole MBP	Intraperitoneal and oral diphenyl diselenide	Diphenyl diselenide was toxic when intraperitoneally administered, reduced when orally administered	Reduced number of macrophages in the CNS, reduced MBP-specific T-cell proliferation
Xue et al. (91)	C57Bl/6 MOG ₃₅₋₅₅	Intraperitoneal tocopherol administration	Decreased	Reduced MOG-specific splenocyte proliferation. Splenocytes incubated with tocopherol produced less IFN γ
Blanchard et al. (92)	C57Bl/6 MOG ₃₅₋₅₅	Intraperitoneal TFA-12 administration	Decreased	Reduced inflammation of the CNS, astrogliosis and demyelination. Induces oligodendrocyte maturation
Racke et al. (93)	SJL, MOG-incubated lymph node cells	Dietary 13-cis-retinoic acid and 4-HPR	Decreased	Not investigated
Zhan et al. (94)	C57Bl/6 MOG ₃₅₋₅₅	Intraperitoneal all-trans retinoic acid administration	Decreased	Reduced DC maturation, reduced pro-inflammatory monocytes in the subarachnoid space. Reduced numbers of T _{H1} and T _{H17} cells in the draining lymph nodes
Xiao et al. (95)	C57Bl/6 MOG ₃₅₋₅₅	Intraperitoneal all-trans retinoic acid administration	Decreased	Inhibits T _{H17} differentiation by reducing expression of the IL-6 and IL-23 receptor

Dietary interventions affect the microbiota and EAE clinical scores.

AHR, aryl hydrocarbon receptor; CNS, central nervous system; DC, dendritic cells; DHA, docosahexaenoic acid; EAE, experimental autoimmune encephalomyelitis; EPA, eicosapentaenoic acid; FICZ, 6-formylindolo[3-2b]carbazole; ITE, 2-(1'H-indole-3' carbonyl)-thiazole-4-carboxylic acid methyl ester; MBP, myelin basic protein; MOG, myelin oligodendrocyte glycoprotein; PLP, proteolipid protein; SGK-1, serum/glucocorticoid kinase 1; TCDD, 2,3,7,8-tetrachlorodibenzo-p-dioxin.

(48). SPF-bred MOG TCR transgenic mice develop spontaneous EAE at high incidence, but appear completely EAE resistant under GF conditions (47). Upon colonization with conventional microbiota, EAE quickly developed (47).

Compared to conventionally colonized mice, GF mice have reduced IL-17 producing CD4⁺ cells in Peyer's patches and lamina propria, but no difference is seen in mesenteric lymph nodes or other remote organs. Additionally, MOG-immunized GF mice had reduced autoreactive anti-MOG antibodies which could be increased by colonization. It is thought that MOG-specific B cells are activated and recruited into deep cervical lymph nodes by helper T cells. Once there, B cells encounter MOG imported from the lymphatic vessels and undergo proliferation, immunoglobulin class switching, and somatic hypermutation (47).

Germfree mice also have reduced gut luminal extracellular adenosine 5'-triphosphate (ATP). ATP can be derived from bacteria, and ATP activates lamina propria CD70^{high}CD11c^{low} DC, leading to the production of IL-6 and IL-23 which are important for the differentiation of T_{H17} cells. Systemic and rectal administration of ATP increases the number of T_{H17} cells in GF mice. Although investigated in a colitis model, administration of

ATP increases T_{H17} response (96). This may be relevant for EAE due to the role of T_{H17} cells in EAE. Administration of alkaline phosphatase, which can neutralize ATP and LPS, reduced the clinical signs of EAE when given presymptomatically but not in the acute or chronic phase (97). Besides reduced gut luminal ATP, GF animals have reduced tight junctions and increased permeability at the blood-brain barrier, potentially affecting EAE (32).

A general caveat in the usage of GF mice for the modeling of human autoimmune disease is that the immunocompetence of such mice is seriously disturbed. Even the frequently used SPF-bred mice are immunologically incomparable to adult humans. SPF-bred mice have reduced cervix mucosal memory T cells, and a relatively lower number of differentiated effector memory CD8⁺ T-cells in their blood, a signature which is comparable to neonatal humans. Feral and pet store mice are immunologically more comparable to adult humans, and SPF-bred mice could be immunologically normalized by cohousing them with pet store mice (98). This indicates that exposure to pathogens affects the immune system and that studies using GF and SPF animals may not always translate well into the clinic.

Antibiotics

Antibiotic treatments modulate gut microbiota and this also affects EAE. An oral cocktail of non-absorbing antibiotics [kanamycin, colistin, and vancomycin (KCV)] administered 1 week before active EAE induction reduces disease scores. The impairment of normal EAE development is accompanied by a reduction of IFN γ , TNF α , IL-6, and IL-17 production by MOG-reactive T cells from draining lymph nodes. KCV also reduced the number of T_{h17} cells in mesenteric lymph nodes while this effect was not seen in iNKT cell-deficient mice, indicating that iNKT cells are mechanistically important in KCV treatment. Since no differences were found in mesenteric lymph node iNKT cells, Foxp3⁺ T_{reg} cells and T_{h17} promoting cytokines, KCV treatment likely exerts its effect upstream of the mesenteric lymph nodes. In the KCV-treated group, reduced expression of IL-21 and IL-23 cytokines were found in lamina propria lymphocytes, and it is therefore speculated that KCV alters iNKT cells in the lamina propria, ultimately leading to T_{h17} cells in the mesenteric lymph nodes (49).

With a different antibiotics mixture (ampicillin, vancomycin, neomycin sulfate, and metronidazole) orally administered before EAE induction, normal EAE development was also impaired. This has been attributed to an increase in Foxp3⁺ Treg cells in the mesenteric and cervical lymph nodes (deep or superficial lymph nodes not specified) of antibiotic-treated mice. The increase in Foxp3⁺ Treg cells is likely a result of increased CD11c^{high}CD103⁺ DC in Peyer's patches and mesenteric lymph nodes. CD11c^{high}CD103⁺ DC enhance the conversion of naive CD4⁺ T cells into Foxp3⁺ Treg cells (50). In addition, this antibiotics mixture increases IL-10 producing CD5⁺ B cells in cervical lymph nodes (deep/superficial lymph nodes not specified). Adoptive transfer of splenic CD5⁺ B cells obtained from mice treated with antibiotics into naïve recipient mice which were MOG₃₅₋₅₅-immunized 1 day post transfer reduced EAE disease score. The reduced disease score was associated with a shift from a T_{h1}/T_{h17} cytokine profile toward a Th2 cytokine profile (51). Thus, this antibiotic treatment induced both regulatory T and B cells which protected against EAE.

Probiotics

The finding that gut microbiota can elicit pro- and anti-inflammatory reactions, has raised the interest for treatment of EAE with bacteria. Prophylactic treatment with *Bifidobacterium animalis* decreases the duration of EAE symptoms (53) and three commercially available probiotic drinks containing strains of *Lactobacillus casei* could reduce the EAE disease score in Lewis rats. However, no significant effects of these drinks have been observed in an SJL mouse model (56).

Prophylactic use of *Lactobacilli* monostrains reduces autoreactive T cells and prevents EAE. However, using these monostrains, established EAE could not be reversed. When three *Lactobacilli* strains are combined in a mixture, *Lactobacilli* therapeutically suppress disease progression and reduce clinical signs in MOG₃₅₋₅₅-immunized mice. The beneficial effect was IL-10 dependent, and treatment induced CD4⁺CD25⁺ T_{reg} cells in the mesenteric lymph nodes. The treatment also reduced T_{h1} and T_{h17} cytokines and increased IL-10 production in cultures

of splenocytes cultured with autoantigen. In addition, reduced IL-17 and increased IL-10 levels were found in the CNS of treated animals (54).

Prophylactic treatment with heat-killed *Pedococcus acidilactici* resulted in reduced EAE scores and decreased MOG₃₅₋₅₅-induced IL-17 and IFN γ production from draining lymph node cells and splenocytes. Treatment also increased CD4⁺ IL-10⁺ cells in mesenteric lymph nodes and the spleen but not in the lamina propria. It is therefore thought that the treatment with heat-killed *P. acidilactici* activates inhibitory DC, which then migrate to the mesenteric lymph nodes to locally induce IL-10⁺ T_{reg} cells. Treatment with heat-killed *P. acidilactici* also reduced the disease score in established EAE (55).

Prophylactic treatment with a cocktail of *Bifidobacterium bifidum*, *Streptococcus thermophilus*, and three *Lactobacillus* subspecies suppressed the EAE incidence and severity in MOG₃₅₋₅₅-immunized C57Bl/6 mice. The beneficial effect was associated with reduced T_{h1} and T_{h17} cell frequency and concomitant cytokine production along with increased IL-10 production in lymph nodes and spinal cord. IL-10 production by CD4⁺ T cells and CD11c⁺ DC is also increased in the spinal cord. When given after EAE immunization, this cocktail delays disease onset but cannot halt disease progression (57).

Intraepithelial lymphocytes are located in the epithelial layers of mucosal linings, e.g., of gastrointestinal and reproductive tracts. They comprise CD2⁻CD5⁻ natural, and CD2⁺CD5⁺ induced T cells, which release cytokines upon antigenic stimulation without the need of antecedent priming. Natural IEL acquire their activated phenotype in the presence of self-antigens in the thymus, while induced IEL acquire their phenotype in post-thymic cognate interaction with antigen. Adoptive transfer of CD4⁺ IEL prior to EAE induction results in reduced disease severity. IEL cells transferred to the CNS upregulate LAG-3, CTLA-4, and TGF- β , but it is still unclear where and how they acquire their phenotype. It is evident, however, that IEL are affected by gut microbiota and can be induced by dietary components, such as aryl hydrocarbon ligands. It has not been tested whether CD4⁺ IEL can reduce established EAE (62).

A series of observations shows the therapeutic value of polysaccharide A (PSA), produced by the bacterium *Bacteroides fragilis*. First, mice treated with antibiotics and recolonized with *B. fragilis* have reduced EAE disease scores compared to those not recolonized. Second, mice recolonized with PSA-deficient *B. fragilis* develop a normal EAE disease course (52), while mice colonized with wild-type *B. fragilis* have a milder disease course. The clinical effect is mirrored by reduced T_{h17} cells in the periphery and reduced IL-17 but increased IL-10 levels in the brains. Wild-type *B. fragilis* recolonized mice also have increased CD103⁺ DC in their cervical lymph nodes (deep/superficial lymph nodes not specified). CD103⁺ DC are known to convert naïve CD4⁺ T cells into IL-10 producing Foxp3⁺ T cells (52).

Bacterial Products

Oral treatment with purified PSA protects against EAE both in a prophylactic and therapeutic mode. PSA treatment led to increased CD103⁺ DC in the cervical lymph nodes (deep/

superficial lymph nodes not specified) (59). Additionally, PSA is also recognized by DC near mesenteric lymph nodes in a toll-like receptor 2-dependent mechanism. PSA-exposed DC migrate to the mesenteric lymph nodes where they induce IL-10 producing T_{reg} cells (60, 99). A type of T_{reg} cell specifically induced by PSA has surface expression of ectonucleoside triphosphate diphosphohydrolase-1 (NTPDase-1; CD39). The NTPDase-1 converts extracellular pro-inflammatory ATP into 5'AMP, which can be further degraded to adenosine which, in contrast to ATP, has anti-inflammatory properties exerted *via* adenosine receptors (60, 99). CD39⁺ T_{reg} cells have increased migratory capacity and are more abundant in the CNS of PSA-treated mice. Upon adoptive transfer, CD39⁺ T_{reg} cells are protective against EAE in MOG-induced C57Bl/6 mice. PSA does not protect against EAE in CD39-deficient mice (61). Multiple bacteria species present in the large intestine are able to produce SCFA (acetate, propionate, and butyrate) by fermentation of dietary fibers. Through its effect on histone deacetylases butyrate can induce epigenetic modifications, such as acetylation of the Foxp3 locus. Butyrate can also stimulate DC and macrophages to secrete IL-10 and retinoic acid through G-protein-coupled receptors, such as Gpr41, 43, and 109a. SCFA may also act on epithelial cells, e.g., by stimulating TGF- β production. The acetylation of the Foxp3 locus as well as production of IL-10, retinoic acid, and TGF- β facilitates differentiation of naïve CD4⁺ T cells into anti-inflammatory Foxp3⁺ T cells (100).

Modified Probiotics

Bacteria can also be used as vector to deliver proteins into the gut and induce tolerance against these proteins. Oral pretreatment with recombinant *L. casei* which produce myelin antigens can reduce EAE scores in Lewis rats. In addition, intranasal pretreatment with soluble cell extracts of bacteria producing MBP_{72–85} could also reduce the EAE disease score, while extracts of bacteria producing guinea pig MBP exacerbated the EAE disease score (63). Effects of *Lactobacilli* on the immune system are strain dependent, as different *Lactobacilli* induce distinct cytokine profiles in the mucosa (101). In addition, the growth phase (log vs stationary) of the bacterial culture is of importance, since this influences the IgG1/IgG2a antibody subclass ratio, which is indicative of the T_{h2}/T_{h1} pathway ratio (102). The differential effect of *Lactobacilli* strains and the influence of the phase of the bacterial culture should be taken into account when designing probiotic preparations.

Pretreatment with *Lactococcus lactis*, expressing heat shock protein 65 as a transgene, suppressed EAE development in MOG_{35–55}-immunized C57Bl/6 mice. The clinical effect was associated with reduced MOG-induced IL-17 production by splenocytes and increased IL-10 production by MOG-stimulated mesenteric lymph node cells. The treatment also caused increased T_{reg} cells in the spleen, inguinal and mesenteric lymph nodes, and spinal cord. *In vivo* depletion of CD4⁺LAP⁺ T_{reg} cells abrogated the protective effect of transgenic *L. lactis*, indicating that the increased T_{reg} cells are mechanistically important. The efficacy of this treatment during established EAE has not yet been investigated (58).

DIET-BASED INTERVENTIONS IN EAE MODELS

The notions that SCFA (<6 carbons) produced by gut microbiota modify immune functions and that SCFA are consumed through the diet underlie the hypothesis that the diet influences microbiota, the immune system, and ultimately EAE. Prophylactic oral treatment with propionic acid, a SCFA that is ingested with food, increases T_{reg} cells and reduces the EAE disease score. In contrast, long-chain fatty acids (LCFA; 13–21 carbons) increase EAE scores, which is associated with increased T_{h1} and T_{h17} cells (64). Of note, SCFA can migrate into the CNS and serve as fuel for CNS neurons and glial cells. The microbiota composition of these mice also differs, as those fed with lauric acid, a saturated LCFA, have reduced *Prevotellaceae* and *Bacteroidetes* in their gut microbiota. This illustrates the impact that dietary components can have on the immune system and EAE expression, possibly through the modification of gut microbiota. Fatty acids can also have beneficial effects on EAE, regardless of their length, when they are unsaturated. These lipids have one or more double bonds between the carbon atoms of their hydrocarbon chain. Fatty acids with a double bond at the third carbon atom counted from the methyl (–CH₃) tail of the chain are Ω -3 fatty acids and with a double bond at the sixth carbon atom are Ω -6 fatty acids. Oral treatment with the Ω -6 fatty acid γ -linolenic acid reduced the EAE clinical scores in MOG_{92–106}-immunized SJL mice. This was associated with increased TGF- β , prostaglandin E₂ production by spleen mononuclear cells (71). Oral treatment with oils containing γ -linolenic acid also reduced the EAE clinical scores in Lewis rats, where EAE was induced with guinea pig CNS matter homogenate (72). Ω -3 fatty acids can also reduce the EAE clinical scores. A diet rich in docosahexaenoic acid (DHA) starting 5 weeks before induction of EAE with MOG_{35–55} reduced the EAE clinical scores in C57Bl/6 mice. This was found associated with reduced T_{h1} and T_{h17} cell differentiation, and reduced amounts of these cells were found in the spleen and spinal cord of mice on a DHA-rich diet. *In vitro*, DHA reduced the expression of costimulatory molecules on DC and reduced their production of pro-inflammatory cytokines (73). A diet with the triglyceride form of DHA, starting before EAE induction also reduced the EAE clinical scores in the same mouse model. *In vitro*, pretreatment of microglia cells with the triglyceride form of DHA reduced microglial oxidative stress and production of nitric oxide and inflammatory cytokines (103). Eicosapentaenoic acid (EPA) supplementation starting 7 days after EAE induction reduced the EAE clinical scores in MOG_{35–55}-immunized C57Bl/6 mice. EPA is a ligand for PPAR α , β , and γ and increased their expression on CD4⁺ T cells in the spinal cord, while reducing IFN γ and IL-17 cytokine production. CD4⁺ T cells from the spleen of EPA-treated mice expressed increased mRNA levels of Foxp3, but also of IL-17 and ROR γ t (74). When an EPA rich diet was given at the time point of EAE induction, it delayed the time before EAE symptoms appeared in guinea pig spinal cord homogenate-immunized dark agouti rats. This was associated with increased myelination of axons in the spinal cord (75). A ketogenic diet, characterized by a high fat to protein and carbohydrate diet, also reduced the EAE clinical score when given

before EAE induction. This was associated with reduced T_{H1} and T_{H17} cells in the CNS and lymph nodes (the authors did not specify which lymph nodes). Additionally, mice on a ketogenic diet had reduced levels of pro-inflammatory cytokines in their lymph nodes and CNS (76). Another study confirmed the beneficial effect of the same ketogenic diet but did not investigate effects on the immune system (77). The proportion and types of lipids in the diet influence the gut microbiota composition. In healthy C57Bl/6 mice, mice were subjected to a high fat diet containing palm oil (high in saturated fatty acids), olive oil (high in monounsaturated fatty acids), safflower oil (high in Ω -6 polyunsaturated acids), or flaxseed/fish oil (high in Ω -3 polyunsaturated fatty acids). These diets were also compared to two low-fat diets, of which one contained a high percentage of calories from maize and one diet in which most calories came from sucrose. The cecum contents were tested for microbiota composition. In the palm oil group, the relative abundance of *Bacteroidetes* and *Bacteroidaceae* was reduced, while *Lachnospiraceae* was increased. Mice that received an olive oil-based diet had an increased proportion of *Bacteroidaceae*. In the flaxseed/fish oil group, the proportion of *Bifidobacteriaceae* and *Bifidobacterium* was increased. Within the low-fat diets, the relative abundance of *Ruminococcaceae* was increased and *Erysipelotrichaceae* was reduced in the high sucrose diet. Interestingly, cecal concentrations of SCFA were increased in the palm oil supplemented group (104). This indicates that dietary fats greatly influence the gut microbiota composition, which influences SCFA production or absorption. In this way, shifts in gut microbiota composition as a result from dietary fats may influence EAE/MS.

Other dietary components can also modify EAE disease scores. Potentially relevant for MS is the beneficial effect of vitamin D3 on EAE, as vitamin D3 deficiency is an established MS risk factor. Intraperitoneal administration of vitamin D prevents EAE development in SJL/J mice immunized with rat spinal cord homogenate when given prophylactically (65). Additionally, dietary vitamin D supplementation reduces EAE scores when given to MBP_{79–87}-immunized B10.PL mice (66) and MOG_{35–55}-immunized C57Bl/6 mice with established EAE, in which the effect was IL-10 dependent (67). DC isolated from MOG_{35–55}-immunized C57Bl/6 mice were also able to reduce EAE severity when incubated with 1,25-dihydroxyvitamin D3 prior to adoptive transfer into mice with EAE. Even though the proportions of T_{H1} and T_{H17} cells in lymph nodes and the spleen were increased during this treatment, their proportions in the spinal cord were reduced. Therefore, DC that were exposed to 1,25-dihydroxyvitamin D3 may reduce migration of pathogenic T cells from the periphery into the CNS (105). *In vitro* culture with high concentrations of vitamin D inhibits CD4⁺ T cell proliferation, reduces IL-6, IL-17 producing T-cells while enhancing IL-10 producing and CD4⁺CD25⁺Foxp3⁺ T cells (106). In other models, vitamin D reduced demyelination and increased remyelination (107) and exerted additional anti-inflammatory effects, such as inhibition of the T_{H1} and B-cell response and modulation of DC (108). Vitamin D may also inhibit the bacteria-induced pro-inflammatory NF- κ B pathway and affect tight junction expression, contributing to proper intestinal barrier function (108).

Excess calorie intake and/or fasting may have a negative effect on MS/EAE. A prophylactic diet of 66% caloric restriction protected Lewis rats from developing EAE (69), while a prophylactic caloric restriction of 40% reduced the EAE score in several mouse models, which was associated with reduced spinal cord inflammation, demyelination, and axonal injury (68). Additionally, increased plasma levels of corticosterone, adiponectin and reduced plasma levels of IL-6 and leptin were found in animals with reduced food intake (68). These altered plasma concentrations are interesting, as corticosterone has broad inhibitory effects on the immune system, and adiponectin reduces IL-6 and TNF α production as well as induces production of IL-10R and IL-1R antagonists. Leptin induces T cell proliferation, T_{H1} differentiation, and pro-inflammatory cytokine production (68). Intermittent feeding (*ad libitum* access to food on alternating days) also had a positive effect on the EAE clinical score, but its effect on the immune system was not investigated (70). The beneficial effect of fasting on EAE disease score was confirmed in another study, in which mice were fed in cycles of 4 days *ad libitum*, followed by 3 days of fasting (first day of fasting 50%, then 2 days of 10% of normal caloric intake). This intervention was able to reduce the clinical EAE score, even in mice with established EAE. The suppression of EAE was associated with reduced immune cell infiltration into the spinal cord, reduced splenic CD11⁺ DC, reduced pro-inflammatory cytokines, increased corticosterone in serum, increased T_{reg} , and reduced T_{H1} and T_{H17} cells in the lymph nodes and spleen. In addition, fasting protects oligodendrocytes from apoptosis and stimulates maturation of oligodendrocyte precursors (77). The effect on oligodendrocytes is seen in EAE and also in a cuprizone model, which demonstrates that fasting affects oligodendrocytes also in an autoimmunity-independent way (77).

Increased salt intake increased the EAE disease score in MOG_{35–55}-immunized C57Bl/6 mice (78–81). This effect was associated with increased activity of T_{H17} cells in the spinal cord and spleen. It is thought that the effect of high sodium is DC independent, as DC function is not altered by exposure to salt (78). Instead, sodium directly influences T_{H17} differentiation. Two studies found that high sodium induces the expression of serum/glucocorticoid kinase 1 (SGK-1) in naïve T cells (80, 81). SGK-1 promotes IL-23R expression and induces T_{H17} differentiation (80). The importance of SGK-1 signaling is shown by the observation that a high-salt diet increases the severity of EAE in mice, while SGK-1-deficient mice develop less severe EAE. This effect was associated with reduced T_{H17} cells in the CNS and mesenteric lymph nodes in SGK-1-deficient mice (80). Dietary tryptophan can be metabolized into a variety of AHR ligands. AHR ligands have shown different effects on EAE when given prophylactically. The tryptophan-derived AHR ligand 6-formylindolo[3-2b]carbazole (FICZ) accelerates EAE onset and increases pathology in MOG_{35–55}-immunized C57Bl/6 mice. This is associated with increased IL-17 and IL-22 producing CD4⁺ T cells in the spinal cords (82). Another study verified that FICZ increases EAE severity and shows that FICZ-treated mice have increased IL-17⁺CD4⁺ and IFN γ ⁺CD4⁺ T cells in the spleen (83). In addition, they show that tryptophan-derived

2-(1'H-indole-3'carbonyl)-thiazole-4-carboxylic acid methyl ester (ITE) reduces EAE severity. Stimulation with 2,3,7,8-tetrachlorodibenzo-p-dioxin (TCDD), a less natural AHR ligand, induces T_{reg} cells, which are protective of EAE also after adoptive transfer (83). Even though in these studies the AHR ligands were injected rather than supplemented through diet, it shows the immunomodulatory effects of different AHR ligands which may also be taken through the diet. AHR signaling may also have protective effects through astrocytes. Mice fed a tryptophan-deficient diet develop increased EAE severity. This effect could be reversed by tryptophan supplementation in control mice, but not in astrocyte-specific AHR knockout mice. Gut microbiota mediate the conversion of tryptophan into AHR ligands. Depletion of these microbiota by ampicillin treatment increased EAE disease scores, which can be reduced by supplementation with multiple tryptophan metabolites and the bacterial enzyme tryptophanase. This shows a protective effect of the interplay between dietary tryptophan, gut microbiota, AHR ligands, and astrocytes (84).

Zinc can also influence EAE. *In vitro*, salt composed of zinc with the amino acid aspartate (zinc aspartate = ZnAsp) reduces the proliferation of stimulated human T-cells (85, 86) and also reduces their production of IL-2, IL-10, IL-17 (85), $IFN\gamma$, $TNF\alpha$, GM-CSF, and IL-5 (86). The same effects of ZnAsp were seen in mouse splenocyte cultures (85, 86). In PLP₁₃₉₋₁₅₁-immunized SJL mice, intraperitoneal injection of 30 μ g ZnAsp per day reduced the EAE clinical score prophylactically as well as therapeutically, while 120 μ g increased the EAE severity (85). An oral dose of 6 or 12 μ g ZnAsp per day reduced the clinical disease score in the same EAE model, while an oral dose of 30 μ g increased the disease score (86). Zinc supplementation also affected EAE in the MOG₃₅₋₅₅-immunized C57Bl/6 model. Zinc supplementation in drinking water (87) and daily intraperitoneal injections of 6 and 30 μ g ZnAsp both reduced the EAE clinical score when given before EAE induction (88). The mechanisms underlying the effect of ZnAsp injections include reduced systemic T_{H17} cells and increased $Foxp3^+$ T-cells in the spinal cord (88). Lower plasma or serum concentrations of zinc have been found in MS patients compared to healthy individuals, while others have found no differences. Mice with EAE had reduced zinc plasma levels on day 21 after EAE induction compared to naïve mice (86). Given the beneficial effects of zinc supplementation in EAE, normalizing zinc levels in MS patients with zinc deficiency may be tested in clinical trials, but a high dosage or long-term supplementation may also have detrimental effects, thus patient serum concentrations in these trials must be tightly monitored (86). A zinc-deficient diet of 10 days did not alter the microbiota composition at phylum level and total bacterial abundance in healthy C57Bl/6 mice compared to those that were fed a normal diet. The relative abundance of several bacterial genera did differ between these diet groups, which included the genera *Enterococcus*, *Enterobacteriaceae*, *Paenibacillus*, *Granulicatella*, *Clostridium*, *Akkermansia*, and *Burkholderia* (109).

High dietary selenium (10 \times normal intake) increased EAE incidence and severity in guinea pigs, while those on normal

and half amounts of selenium developed EAE in a normal fashion (89).

Intraperitoneal injection of diphenyl diselenide was toxic for whole MBP-immunized Wistar rats, while oral administration 1 week after immunization resulted in reduced EAE incidence and symptoms. This was associated with reduced macrophage numbers in the CNS and reduced MBP-specific T-cell proliferation. The EAE-reducing mechanism of diphenyl diselenide is thought to be based on reduced NF- κ B signaling in macrophages and T-cells. In addition, diphenyl diselenide may increase ROS clearance as it mimics glutathione peroxidase activity, which protects against oxidative damage (90). The different effects of dietary selenium on EAE may be explained by differences in formulation.

Vitamin E has potent antioxidant properties. Multiple compounds are considered part of the vitamin E group, of which tocopherol is best studied. Intraperitoneal administration of tocopherol reduced the EAE clinical scores in MOG₃₅₋₅₅-immunized C57Bl/6 mice, which was associated with reduced MOG-specific splenocyte proliferation. In addition, splenocytes incubated with tocopherol produced less $IFN\gamma$ (91). Vitamin E also increases remyelination and reduces demyelination in an animal model where demyelination is chemically induced (107). TFA-12, a synthetic tocopherol derivative, reduced the EAE clinical scores in MOG₃₅₋₅₅-immunized C57Bl/6 mice when injected intraperitoneally at the onset of EAE symptoms. This was associated with reduced inflammation of the CNS, astrogliosis, and demyelination. TFA-12 also accelerated remyelination in a chemically induced demyelination model. The mechanism behind this is believed to be due to the induction of oligodendrocyte maturation (92).

Vitamin A and its metabolites all-trans retinoic acid and 9-cis-retinoic acid can also reduce EAE severity. Prophylactic dietary 13-cis-retinoic acid and 4-HPR (a synthetic retinoid derivative) reduced EAE incidence in SJL mice which received MOG-incubated lymph node cells to induce EAE. Dietary 4-HPR can also reduce EAE severity in a therapeutic manner (93). In MOG₃₅₋₅₅-immunized C57Bl/6 mice, intraperitoneal injection with all-trans retinoic acid reduced the EAE clinical score when given prophylactically (94) as well as therapeutically (95). This was associated with reduced DC maturation and reduced pro-inflammatory monocytes in the subarachnoid space. Reduced T_{H1} and T_{H17} cells were also found in the draining lymph nodes. In addition, bone mesenchymal DC pretreated with all-trans retinoic acid were able to reduce T_{H1} and T_{H17} differentiation and lymphocyte proliferation *in vitro* (94). All-trans retinoic acid also directly affected naïve $CD4^+$ T cells, as it inhibited T_{H17} differentiation by reducing expression of the IL-6 and IL-23 receptor (95). Even though all-trans retinoic acid can induce $Foxp3^+$ T cells *in vitro*, the frequency of these cells was not increased in EAE-affected mice treated with the metabolite (95). *In vitro*, 9-cis-retinoic acid reduced pro-inflammatory cytokine production in LPS-stimulated microglia and reduced $TNF-\alpha$ and nitric oxide production in astrocytes (110). Mechanisms underlying gut microbiota and dietary interventions are summarized in **Box 2**.

BOX 2 | Mechanisms underlying microbiota and dietary interventions in experimental autoimmune encephalomyelitis (EAE).

Most interventions are mediated by the induction of anti-inflammatory IL-10 producing T_{reg} s. These cells suppress pro-inflammatory cytokine production and T cell proliferation. In addition, multiple other mechanisms have been unraveled.

Germfree mice are resistant against EAE. The EAE resistance is attributed to reduced recruitment and activation of autoantibody producing B cells (47) as well as dendritic cells (DC) and the reduced capacity of these professional antigen-presenting cells (APC) to stimulate pro-inflammatory T cell responses (48).

Antibiotic treatments reduce EAE *via* invariant natural killer T (iNKT) cells and $CD1^{high}CD5^{+}$ B cells. Antibiotic treatments likely suppress pro-inflammatory cytokine production by iNKT cells located in the lamina propria, which reduces T_{H17} development (49). Antibiotic treatment also induces IL-10 producing $CD1^{high}CD5^{+}$ B cells in distant lymph nodes, and adoptive transfer of $CD1^{high}CD5^{+}$ B cells protect against EAE (51). Antibiotic treatments increase $CD11c^{high}CD103^{+}$ DC in mesenteric lymph nodes, which are able to induce $Foxp3^{+}$ T cells (50).

Polysaccharide A (PSA) is captured by DC in the gut *via* a TLR-2 dependent mechanism. DC then migrate to the mesenteric lymph nodes and induce IL-10 producing $CD4^{+} T_{reg}$ s. A type of IL-10 producing T_{reg} specifically induced by PSA expresses the ectonucleosidase CD39 on its surface. $CD39^{+} T_{reg}$ cells have increased migratory capacity, are more abundant in the central nervous system (CNS) of PSA-treated mice, and are protective against EAE. The EAE modulatory capacity relies on the conversion of ATP into adenosine, which increases the anti-inflammatory effects of T_{reg} s and suppresses effector cells, thus protecting against CNS inflammatory tissue damage (61, 99). Additionally, PSA treatment causes accumulation of $CD103^{+}$ DC in the cervical lymph nodes, which converts naive $CD4^{+}$ T cells into protective IL-10 producing $Foxp3^{+}$ T cells. The mechanism causing the accumulation of $CD103^{+}$ DC in the cervical lymph nodes is unknown (59).

Short-chain fatty acids (SCFA), such as butyrate and propionic acid, are produced by bacterial fermentation of dietary fibers in the colon or consumed with the diet. SCFA induce T_{reg} s through multiple known mechanisms. Oral administration of propionic acid can induce $CD4^{+}CD25^{+}Foxp3^{+} T_{reg}$ cells, while simultaneously reducing T_{H17} responses (64). Butyrate can stimulate DC, macrophages, and epithelial cells to produce cytokines that facilitate the differentiation of naive $CD4^{+}$ T cells into anti-inflammatory $Foxp3^{+}$ T cells (100). *Dietary components* influencing EAE also include: (1) Different types and ratios of lipids, such as Ω -6 fatty acids, Ω -3 fatty acids and ketogenic diets reduce EAE by affecting splenic mononuclear cells (71) or T cells (73). (2) *Vitamin D3* has a broad effect on the immune system (108). In EAE, its effect is dependent on IL-10 (67). (3) *Vitamin E* has antioxidant properties (91), accelerates remyelination (107), and also affects splenocytes (91). (4) *Vitamin A* affects DC (94) and reduces T_{H1} and T_{H17} differentiation (95). (5) *Zinc* increases $Foxp3^{+}$ T cells (88), reduces T cell proliferation, and reduces their pro-inflammatory cytokine production (85, 86). (6) *Selenium* protects against oxidative damage and also affects T cells (90). (7) *Caloric restriction/fasting* reduces EAE, which is associated with changes in plasma levels of corticosterone, adiponectin, IL-6, and leptin (68). In addition, fasting reduces DC, T_{H1} , T_{H17} cells and increases T_{reg} cells as well as stimulates remyelination by oligodendrocytes (77). (8) A *high-salt* diet increases the T_{H17} response, which is likely DC independent. Instead, salt induces SGK-1 signaling, leading to increased T_{H17} differentiation. (9) *Aryl hydrocarbon receptor ligands* can have multiple effects on EAE. Cruciferous vegetables such as broccoli are rich in indole-3-carbinol, which upon contact with stomach acid, is converted into aryl hydrocarbon receptor ligands and can induce $CD4^{+}$ IEL. These cells can migrate into the CNS and are protective against EAE (62). 6-Formylindolo[3-2b]carbazole, a different aryl hydrocarbon receptor (AHR) ligand, increases the EAE disease score, while the tryptophan-derived AHR ligand ITE reduces EAE clinical signs. Tryptophan-derived AHR ligands limit astrocyte-mediated inflammation in the CNS (84). Aryl hydrocarbon receptor ligands may also act on type 3 ILC (17).

GUT MICROBIOTA IN MS PATIENTS

Comparing the Gut Microbiota of MS Patients with Healthy Controls

Colonization with bacteria and oral treatment with bacterial products and diet are all exogenous factors *via* which the clinical and/or pathological expression of EAE can be modified. It is therefore of considerable interest whether differences exist between the gut microbiota composition of MS patients compared to healthy individuals and to test whether treatment concepts developed in EAE can be translated to humans. Studies analyzing gut microbiota of MS patients are summarized in **Table 3**. Of these studies, eight have investigated whether differences exist in the microbiota composition of MS patients compared to healthy individuals, for which collectively almost 250 MS samples were tested. A reduced abundance of SCFA producers such as *Lachnospiraceae*, *Prevotella*, *Faecalibacterium prausnitzii*, and *Butyricimonas* in the gut of MS patients has been repeatedly reported. As SCFA reduced the disease score in several EAE models, reduced SCFA production in the gut of MS patients may have an impact on MS pathology. Of note, *F. prausnitzii* produces a microbial anti-inflammatory molecule (MAM), which has anti-inflammatory effects in a mouse model of colitis. MAM displays an inhibitory effect on nuclear factor- κ B activity in human epithelial cells. Moreover, administration of *L. lactis* delivering a MAM-encoding plasmid reduced morbidity in an animal colitis model, whereas wild-type *L. lactis* had no effect (111). By producing MAM, *F. prausnitzii* adds to an anti-inflammatory milieu in the gut. Additionally, the gut of MS patients harbors higher numbers of the archaea *Methanobrevibacter* compared to healthy individuals. As mentioned earlier, lipids from *Methanobrevibacter* are thought to elicit inflammatory reactions (112) and therefore possibly add to a pro-inflammatory milieu in the gut of MS patients. Two studies found that *Enterobacteriaceae* are increased in MS patients compared to healthy individuals. The *Enterobacteriaceae* family of gut bacteria includes pathogenic as well as non-pathogenic/opportunistic species. Increased *Enterobacteriaceae* abundance has been found in patients with inflammatory bowel disease (IBD). However, it is unclear if this dysbiosis is a cause or consequence of the IBD (3). Several *Enterobacteriaceae* members have a competitive growth advantage under inflammatory conditions in the gut of mice (113), and therefore, it is conceivable that *Enterobacteriaceae* abundance increases after IBD develops. Studies investigating the role of *Enterobacteriaceae* in EAE models were not found. Of note, children with autism and patients with Parkinson's disease have increased *Enterobacteriaceae* abundance in their gut microbiota, indicating that *Enterobacteriaceae* could possibly play a role in CNS disorders (114). Only one study found that *B. fragilis* was reduced in a cohort of 18 pediatric MS patients compared to healthy individuals (115). *In vitro*, PSA induced expression of CD39 and $Foxp3$ on naive human $CD4^{+}$ T cells and increased IL-10 production (116). Even though only one study found a difference in the abundance of *B. fragilis* (115), the beneficial effect of PSA on EAE may be translatable to corresponding human diseases, such as MS.

TABLE 3 | Gut microbiota studies in MS patients.

Reference	Number of subjects, type of MS	Main findings
Tremlett et al. (115)	18 RR pediatric, 17 HC	No difference in species richness. Increased <i>Desulfovibrionaceae</i> , <i>Methanobrevibacter</i> ^a , <i>Enterobacteriaceae</i> ^b . Reduced <i>Lachnospiraceae</i> ^a , <i>Ruminococcaceae</i> ^a , <i>Faecalibacterium prausnitzii</i> ^a , and <i>Butyricimonas</i> ^a <i>Bacteroides fragilis</i> ^c . Functional prediction of microbial genes indicated increased glutathione metabolism in patients
Tremlett et al. (117)	17 RR pediatric	Depletion of Fusobacteria is associated with increased risk on earlier relapses. Higher abundance of Firmicutes and Euryarchaeota trended to be associated with increased risk on earlier relapses
Tremlett et al. (118)	15 RR pediatric, 9 HC	No difference in blood Foxp3 ⁺ T _{reg} frequency and intracellular production of IFN γ , IL-17, IL-4, and IL-10 by CD4 ⁺ T cells. IL-17 ⁺ T cells correlated with gut microbiota richness in MS patients. IL-17 ⁺ T cells inversely correlated with Bacteroidetes abundance in patients. T _{reg} frequency correlated with Fusobacteria abundance in healthy controls
Miyake et al. (119)	20 RR, 40 HC, 18 HC	No difference in species richness. Reduced <i>Faecalibacterium</i> ^a , <i>Prevotella</i> ^a , <i>Anaerostipes</i> , butyrate-producing bacterium A2-175 ^a , and SL7/1 ^a . Trends in increased <i>Bifidobacterium</i> , <i>Streptococcus</i>
Chen et al. (120)	31 RR, 36 HC	No difference in species richness. Increased <i>Pedobacter</i> , <i>Flavobacterium</i> , <i>Pseudomonas</i> , <i>Mycoplana</i> , <i>Blautia</i> , <i>Dorea</i> , and <i>Haemophilus</i> . Reduced <i>Parabacteroides</i> , <i>Adlercreutzia</i> , <i>Collinsella</i> , <i>Lactobacillus</i> , and <i>Prevotella</i> ^a . Reduced fatty acids metabolism and increased phytoestrogen metabolism were predicted by functional analysis
Jangi et al. (112)	60 RR, 43 HC	Increased <i>Methanobrevibacter</i> ^a , <i>Akkermansia</i> . Decreased <i>Butyricimonas</i> ^a . Untreated patients had reduced <i>Prevotella</i> ^a , <i>Sutterella</i> , increased <i>Sarcina</i> . Positive correlations between <i>Methanobrevibacter</i> ^a , <i>Akkermansia</i> , and T-cell/monocyte gene expression implicated in MS pathology. Negative correlations for <i>Butyricimonas</i> ^a with gene expressions implicated in MS pathology
Jangi, et al., abstract (121)	22 untreated, 13 GA, 18 IFN- β , 44 HC	Increased <i>Methanobrevibacteriaceae</i> ^b in patients compared to HC. Reduced <i>Butyricimonas</i> ^a in untreated patients compared to HC. Both treatment groups had increased <i>Lachnospiraceae</i> ^a abundance compared to untreated MS patients
Baum et al., abstract (122)	54 MS patients vs healthy controls (the amount of controls is not stated in the abstract)	Increased <i>Atopobium</i> , <i>Bifidobacteriae</i> . Reduced <i>Bacteroidaceae</i> in MS patients
Cantarel et al. (123)	7 RR vitamin D-deficient, before and after vitamin D supplementation, 8 HC	Reduced <i>Bacteroidaceae</i> , <i>Faecalibacterium</i> ^d , increased <i>Ruminococcus</i> ^a in patients. Vitamin D supplementation increased <i>Faecalibacterium</i> ^d , <i>Akkermansia</i> , and <i>Coprococcus</i> ^a . GA treatment affected gut microbiota
Sand et al., abstract (124)	Not specified in abstract	Increased <i>Enterobacteriaceae</i> ^b in female patients compared to HC. GA treatment affects gut microbiota
Tankou et al., abstract (125)	43 untreated MS patients, disease subtype not specified	Patients with <40 ng/mL serum vitamin D concentration had lower <i>Ruminococcaceae</i> ^a compared to patients with higher vitamin D levels
Telesford et al. (116)	<i>In vitro</i> cultures of patients and HC	PSA from <i>B. fragilis</i> ^c induced CD39 ⁺ T _{reg} cells <i>in vitro</i>

^aSCFA producer.^bLikely pro-inflammatory.^cPSA producer.^dMAM producer.

MAM, microbial anti-inflammatory molecule; MS, multiple sclerosis; PSA, polysaccharide A; RR, relapsing remitting; SCFA, short-chain fatty acids.

Taken together, the gut microbiota composition of MS patients and healthy individuals likely differs, as reflected by a different abundance of SCFA producing bacteria, *F. prausnitzii*, *Methanobrevibacter*, and *Enterobacteriaceae* (see **Figure 5**). Not all studies reported the same differences between MS patients and healthy individuals. This may be explained by differences in sampling methods, molecular techniques, and differences in study populations such as their diet, received treatments, type of MS, or ethnicity. In addition, the populations of tested MS patients varied among studies. Differences in the gut microbiota of pediatric MS patients compared to adult MS patients may exist. Moreover, some studies divided patients in groups based on treatments,

while others only separated patients from healthy individuals. Therefore, there is a great need of large controlled studies to determine which results from multiple small studies can be replicated in a bigger cohort. It is also not clear whether the dysbiosis in SCFA-producing bacteria, *F. prausnitzii*, *Methanobrevibacter*, and *Enterobacteriaceae* adds to the pathology of MS, or if it is a result of MS pathology or treatments.

Prospective Microbiota Studies in MS Patients

Two relatively small studies have tried to link gut microbiota to clinical outcomes or changes in the immune system of MS patients.

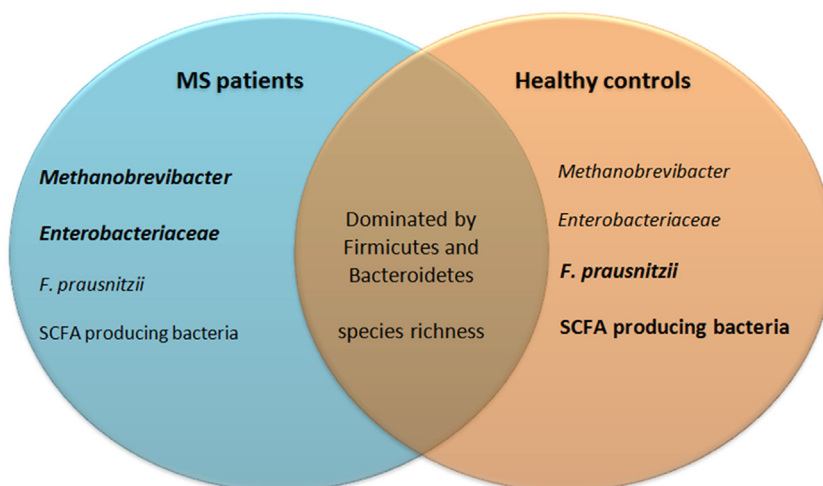


FIGURE 5 | Similarities and differences in gut microbiota of MS patients and healthy controls. Eight studies investigating almost 250 patient fecal samples for differences in microbiota composition were analyzed. Many species were shown differently present. Only differences that have been reproduced by at least one other study are included in this figure. The gut microbiota of both MS patients and healthy controls are dominated by bacteria from the phyla *Firmicutes* and *Bacteroidetes* and their species richness does not differ. MS patients may have increased *Methanobrevibacter* and *Enterobacteriaceae*, but reduced *Faecalibacterium prausnitzii* and SCFA producing bacteria. SCFA, short-chain fatty acids; MS, multiple sclerosis.

In a cohort of 17 pediatric MS patients, the absence of *Fusobacteria* was associated with increased risk on earlier relapses. Additionally, trends in increased abundance of *Firmicutes* and *Euryarchaeota* were observed which may be associated with increased risk of earlier relapses (117). In 15 pediatric MS patients, no difference was found in blood CD4⁺ T_{reg} cells compared to healthy individuals, but IL-17⁺ T cells correlated with species richness and inversely correlated with *Bacteroidetes* in patient stools (118). These studies are an interesting indication that it may be possible to modulate the gut microbiota as a treatment of MS. However, studies performed thus far included far too few patients to be able to determine a causal relationship between the abundance of certain microbial species and symptoms or immune responses. The effect of MS treatments on gut microbiota has also only been investigated in relatively small studies thus far. Preliminary data suggest that both glatiramer acetate treatment and vitamin D supplementation affect gut microbiota (see **Table 3**).

The aforementioned microbiota studies in MS patients are possibly biased as fecal/stool samples were used for characterization of gut microbiota. The composition of microbiota varies from the mucosal surface to the lumen, and fecal samples mostly detect luminal microbiota. Hence, differences in mucosa-associated species may be underappreciated (17). *B. fragilis* is one of the few species that can penetrate the tight inner mucus layer of the colon and can colonize the colonic crypts (15). It is, therefore, interesting to investigate whether mucosa-associated *B. fragilis* is differently present in patients. Moreover, as fecal samples more closely reflect microbiota composition of the colon than of the small intestines, differences in microbiota composition of the small intestines are undetected (16).

Potential Role of PGN in MS

Another way in which gut microbiota may influence MS is through PGN, a bacterial cell wall component. PGN is

ubiquitously present in the gut and can be phagocytosed into APC (142). PGN is sensed through NOD-like and toll-like receptors, which induces pro-inflammatory mitogen-activated protein kinase and NF- κ B (143). Microbiota-dependent NOD1 signaling increases the lifespan of circulating neutrophils and monocytes (144), and PGN has strong adjuvant properties, as mice injected with MOG₃₅₋₅₅ and incomplete Freund's adjuvant did not develop EAE, while when PGN was added to the mixture mice did develop EAE (145). Mechanistically, PGN modulates DC, which leads to T_{H1} cell expansion (145). In the rhesus monkey and marmoset EAE model (146) as well as human MS (147), PGN is found in APC located in the brain. Another study in autopsied brain samples revealed that the expression of bacterial components in MS samples differed from non-MS samples. In both sample groups, the dominant phylum was Proteobacteria, but less diversity was observed in progressive MS samples. In addition, Actinobacteria were enriched in RRMS samples. The total amount of PGN in the brain did not distinguish MS samples from non-MS samples. But within MS lesions, PGN inversely correlated with myelin density and was associated with several genes of the immune system, including NF- κ B (34). The presence of a TLR/NLR ligand in the brain, possibly originating from gut microbiota, may contribute to MS pathology by influencing inflammation, demyelination or remyelination, and therefore, more research is needed to elucidate the role of microbial compounds in MS brains.

DIETARY STUDIES IN MS PATIENTS

How different food components may affect MS has been reviewed comprehensively by Schmitz et al. (141) of which the most important ones are summarized in **Table 4**. Multiple dietary intervention studies have been done in MS patients, but most were unsuccessful in reducing MS severity and have not

examined the effects on microbiota. Vitamin D supplementation did show positive outcomes as it led to fewer relapses and reduced pro-inflammatory cytokines such as IFN γ and IL-4 in T-cells. Additionally, vitamin D supplementation increased peripheral IL-10⁺CD4⁺ T cells, suppressed T-cell proliferation, and reduced the number of gadolinium-enhancing regions per patient (13, 141). However, these results came from small studies and more randomized controlled trials investigating the effect of vitamin D for MS treatment are now taking place. The effect of vitamin D might in part be exerted *via* the gut microbiota, as in healthy individuals high vitamin D intake was associated with

increased proportions of *Prevotella* and reduced proportions of *Haemophilus* and *Veillonella* (148). Vitamin D supplementation in vitamin D-deficient MS patients altered the relative proportions of different genera, but this study included very few subjects (123). In a study of 70 and a replication study of 59 RR MS patients, the influence of salt on MS was studied. As 80–90% of salt intake is excreted in urine, salt excretion rate in urine was measured as a proxy for salt intake. High salt excretion was associated with increased relapse rates, increased risk on developing a new lesion detected by MRI scans, and increased T2 lesion load. However, causality was not established. Patients with relapses are

TABLE 4 | Dietary studies in MS patients.

Reference	Number of subjects, type of MS	Diet-groups	Main findings
Bates et al. (126)	292 RRMS	Ω -3 EPA and DHA vs oleic acid supplementation. Both groups also had vitamin E and antioxidant supplementation	No difference in relapse rate or EDSS
Weinstock-Guttman et al. (127)	27 RRMS	Low-fat diet (<15% calories) with Ω -3 EPA and DHA supplements vs low fat (<30% calories) with oleic acid supplements. Both groups received vitamin E, multivitamin, and calcium supplementation	No difference in relapse rate or EDSS between groups. Relapse rates, reduced compared to 1 year before the start of this study. EPA/DHA group had increased physical and mental parameters. Reduced fatigue score in the oleic acid group
Torkildsen et al. (128)	99 RRMS	Ω -3 EPA and DHA vs corn oil supplementation	No difference in relapse rate, EDSS, quality of life, and fatigue scores
Bates et al. (129)	134 SPMS	Ω -6 Linoleic acid and γ -linolenic acid vs linoleic acid vs oleic acid supplementation	No difference in relapse rate or EDSS
Bates et al. (130)	104 PPMS	Ω -6 Linoleic acid and γ -linolenic acid vs linoleic acid vs oleic acid supplementation	No difference in relapse rate or EDSS. High-dose linoleic acid group had less severe relapses
Harbige and Sharief (131)	28 RRMS	Ω -6 Linoleic acid supplementation vs placebo	Reduced relapse rate, improved EDSS
Jafarirad et al. (132)	35 RRMS	Vitamin A (retinyl palmitate) or placebo supplementation	Reduced T cell proliferation when incubated with MOG
Wingerchuk et al. (133)	15 RRMS	Vitamin D supplementation, uncontrolled	Reduced EDSS compared to baseline
Mahon et al. (134)	39 MS patients, subtype not specified	Vitamin D3 supplementation vs placebo. Both groups received calcium supplementation	Increased TGF- β concentration in serum of vitamin D3 supplemented group. No differences in TNF α , IFN γ , and IL-13 concentrations
Goldberg et al. (135)	10 MS patients, subtype not specified	Vitamin D3, calcium, and magnesium supplementation, uncontrolled	Fewer relapses than expected
Choi et al. (77)	48 RRMS	Cycles of fasting vs ketogenic diet vs control	Fasting and diet group had improved health related quality of life, reduced disability scores. Fasting and ketogenic diet were well tolerated
Haghikia et al. (136)	Not specified in abstract	Propionic acid treatment in patients and HC	No side effects of PA. 25–30% increase of T _{reg} and reduced T _{H17} cells in both groups
Farez et al. (137)	70 RRMS, replicated by a separate group of 52 patients		High salt excretion is associated with increased disease activity
Hadgkiss et al. (138)	2,087 MS patients, subtype not specified		A general healthy diet, based on fruit, vegetable, fat, meat and dairy consumption was associated with better clinical scores
Rezapour-Firouzi et al. (139)	65 RRMS	Three groups: 1. hemp seed/evening primrose oil; 2. olive oil; and 3. cosupplemented oil vs baseline measurements. Subjects were advised to have a general healthy diet	Reduced relapse rates, EDSS in groups 1 and 3 compared to baseline
Nordvik et al. (140)	16 RRMS	General health lifestyle and A, B, D, E, Ω -3 fatty acid supplementation	Reduced EDSS compared to baseline

Dietary studies in MS patients have been extensively reviewed by Schmitz et al. (141).

AHR, aryl hydrocarbon receptor; CNS, central nervous system; DC, dendritic cells; DHA, docosahexaenoic acid; EDSS, expanded disability status scale; EAE, experimental autoimmune encephalomyelitis; EPA, eicosapentaenoic acid; MOG, myelin oligodendrocyte glycoprotein; MS, multiple sclerosis; SGK-1, serum/glucocorticoid kinase 1.

often treated with steroids, which influences salt excretion (137). Clinical trials with controlled salt intake are needed to assess the impact of increased salt intake on MS severity.

In a cohort of 2,087 MS patients, a general healthy diet (based on fruit/vegetable, fat, meat, and dairy consumption) was associated with better clinical scores (138). Therapeutically, two studies have shown effect of a general healthy diet (low intake of saturated fatty acid, sugar, coffee, alcohol, and high intake of vegetables, fruits, fish and whole grain products) on MS clinical scores when combined with supplementation of oils rich in Ω -6 or Ω -3 fatty acids (139). Of note, one of these studies also supplemented multiple vitamins including vitamin A, B, D, and E (140). Since these studies used multiple dietary components as intervention, it is hard to determine which part of the intervention exerted the beneficial effects. A difference in fat consumption may be responsible, since a third study found that reduced fat intake supplemented with Ω -3 fatty acids reduces MS clinical scores (127). It is noteworthy that the abovementioned studies related results to baseline measurements instead of a control group. Because dietary studies in MS can hardly be blinded and patients in the control groups have little incentive to complete a study, control groups have high dropout rates. Efforts are now being made to develop study designs that increase the participation of patients in control groups and to test if an observation period prior to a test diet can serve as a control group (149). Multiple studies are currently listed on www.clinicaltrials.gov as recruiting or ongoing, including studies testing diets such as ketogenic, low sodium, low saturated fat, caloric restriction, and a variation of Paleolithic diet (low grain, high vegetables). These studies should provide additional insight into which compounds may be responsible for the positive effects of a generally healthy diet. Preliminary results of oral treatment with propionic acid are promising. Healthy individuals and patients were treated with propionic acid, which increased T_{reg} frequency and reduced T_{H17} frequency in both groups without any side effects; only an abstract of this study is available (136).

METHODS TO MANIPULATE GUT MICROBIOTA FOR THERAPEUTIC PURPOSES

Current evidence suggests that MS patients may have a different gut microbiota composition compared to healthy individuals and that gut microbiota may affect the relapse rate (see **Table 3**). If these results will be verified in larger studies, it would be interesting to test whether manipulation of the gut microbiota of MS patients induces immunosuppression. Multiple approaches can be used to manipulate the gut microbiota (see **Box 3**). Probiotics involve the treatment with live microorganisms that are absent or present in too low abundance in the host. In this way, bacteria that induce immunosuppression can be introduced in patients. Probiotics are already being used in intestinal diseases such as IBD or antibiotic-associated diarrhea (17). Prebiotics are food ingredients with which gut microbiota may be modified. Resistant starches, which can reach the colon before being metabolized, alter the gut microbiota and have been associated with increased butyrate production. Additionally, fibers can be

BOX 3 | Methods to alter or use microbiota as a therapeutic intervention.

Probiotics can be used to introduce strains that are missing in hosts. Since multiple sclerosis (MS) patients have reduced butyrate producing strains in their gut flora, these strains may be restored using probiotics.

Prebiotics can be used to enrich strains that are deficiently present in the hosts. Resistant starches have been associated with increased butyrate production. Additionally, fibers can be fermented by gut microbiota which produce SCFA. The effect of prebiotics is dependent on microbial strains that are already present in the host. Therefore, high individual variation and a large number of non-responders are seen (150).

Synbiotics contain a mixture of probiotics and prebiotics. This mixture introduces new strains while synergistically increasing their effectiveness due to increased survival, competition, or metabolic activity of the introduced strain (150).

Antibiotics can be used to reduce unwanted strains in the gut microbiota. However, the effect of antibiotics is often very broad and targeting many strains at once also depletes beneficial bacteria, including short-chain fatty acids (SCFA)-producing bacteria (151).

Phage therapy has the key advantage that it can be used to selectively reduce strains of bacteria, but is not yet in clinical use (152). In the future, phage therapy may specifically target pro-inflammatory bacteria that are increased in MS patients, while beneficial strains remain untouched.

Fecal microbiota transplantation can be used in patients who have a dysbiosis to make their gut microbiota composition more closely resemble the composition of a healthy donor. Strains that are deficient in patients with a dysbiosis can be induced in the recipient using fecal microbiota transplantation, while excessive strains may be reduced through competition and possibly cross talk between gut flora and the immune system (153).

Microbial products such as polysaccharide A (PSA) or SCFA may be administered to induce an anti-inflammatory response in the gut. Chemical alterations may be needed to promote therapeutic efficacy and dosage/kinetic studies will need to elucidate how to best use these products (100).

Dietary interventions such as SCFA, Ω -3/6 fatty acid, vitamin, or trace element supplementation, reduced salt intake or caloric restriction may also be used to reduce MS.

fermented by gut microbiota that produce SCFA. However, the effect of prebiotics depends on microbial strains that are already present in the host. Therefore, high individual variation and a large number of non-responders are seen (150). Probiotics and prebiotics can also be used in conjunction, i.e., as synbiotic, to augment their individual effectiveness. The probiotics part introduces new strains, while the prebiotic part synergistically increases the efficacy of the introduced species due to increased survival, competition, or metabolic activity (150). Antibiotics can be used to remove or suppress unwanted, immunogenic strains from the gut microbiota. A downside of antibiotic treatment is that multiple strains are targeted and beneficial bacteria may also be depleted. This increases the risk of opportunistic infections. Moreover, in mice, vancomycin treatment disrupts complex carbohydrate fermentation and leads to reduced concentrations of SCFA, including butyrate and propionic acid (151). Phages may be employed for more specific targeting of immunogenic parts of the gut microbiota. In this way, beneficial bacteria remain untouched and immunosuppression may still occur. Phages may also be used to increase the competitiveness of strains that need to be introduced. However, phage therapy still requires more research before it can be implemented, as there is limited evidence of efficacy in human clinical trials (152). Fecal microbiota transplantation involves the administration of a liquid filtrate of a healthy person's stool to a diseased recipient. In this way, the recipient gut microbiota can be modulated to resemble the gut

microbiota of the donor. New strains may be introduced by the transplantation, and through competition and possibly cross talk between gut flora and the immune system, excessive strains may be reduced and dysbiosis could be normalized. Fecal microbiota transplantation has been effective in small randomized controlled trials for the treatment of recurrent *Clostridium difficile* infection. Based on these successes, clinical trials are now being done to investigate the efficacy of fecal microbiota transplantation in IBDs (153). Fecal microbiota transplantation may be a relatively safe option for restoration of a healthy microbiome in MS patients. Instead of manipulating microbiota, microbial products that induce immunosuppression may also be used for therapeutic purposes. Chemical alterations may have to be made to make sure that the compounds reach their site of action and act through their intended mechanism. SCFA are produced by bacteria in the colon, but when orally administered, a large proportion of SCFA are thought to be absorbed in the small intestine (100). Therefore, dosage and kinetic studies will have to point out how optimal use can be made of these products. The advantage of bacterial compounds over live bacterial species is that bacterial compounds can be dosed like any other drug, while live bacterial species are affected by colonization and may therefore lead to variable interindividual effects (37).

CONCLUSION AND FUTURE DIRECTIONS

This review shows that many different microbial species and dietary interventions affect EAE disease expression and differences in gut microbiota between MS patients and healthy individuals may exist. Therefore, altering the gut microbiota of MS patients, possibly through dietary interventions is a potential therapeutic aim. Thus far, multiple small studies found that SCFA producing bacteria are reduced in patients with MS, and the PSA producing bacterium *B. fragilis* may also be reduced although *B. fragilis* is only found differently present in the gut by one study. Potentially pro-inflammatory *Methanobrevibacter* and *Enterobacteriaceae* may be increased in patients with MS. In addition, small studies have tried to determine if a causal relationship exists between gut microbiota and MS severity or immune responses. To determine if the results found in small studies are true and to determine if a causal relationship exists, controlled, prospective studies are eagerly awaited. Because it is relatively easy to frequently collect stool samples, it is feasible to analyze a few 100 samples of MS patients. Of these patients, clinical data need to be gathered, such as which treatments they are on, when they have relapses, as well as immunological data such as the frequency of T cell subsets and their cytokine production. In this way, the effects of vitamin D, glatiramer acetate, and other treatments on gut microbiota can be assessed, and it will be possible to determine whether a causal relationship exists between microbiota of MS patients and their immune response in relation to disease progression.

We also propose to collect mucosa biopsies to investigate the contribution of mucosa-associated bacterial species in MS. Thus far, all studies on gut microbiota in MS patients used fecal samples, which focus on luminal microbiota. Therefore, differences in mucosa-associated species may have been left undetected. Comparing intestinal biopsies of MS patients

with healthy individuals may show differences, which could be additional targets for treatment. Geva-Zatorsky et al. have recently monocolonized gnotobiotic mice with one of 53 different bacterial species and assessed their immunomodulatory effects. Even though the effects of bacteria may be different in SPF or conventionally housed mice, this does provide additional immunosuppressive species which may be combined to rationally develop probiotic mixtures (37).

In the case that species that worsen or improve MS will be identified, the gut microbiota of MS patients may be modified for therapeutic benefit. This may be achieved by using probiotics, prebiotics, or a mixture of these two: synbiotics. The role of viruses in this process needs deeper investigation. As viruses can greatly influence the bacterial diversity, phage therapy may be used in conjunction with pre-, pro-, or symbiotic mixtures to reduce competitiveness of microbiota that are already present and increase colonization of introduced microbiota. These may also be used to reduce the abundance of unwanted microbial species. An already used and relatively safe option for altering the gut microbiota is fecal microbiota transplantation. The gut microbiota of MS patients may be restored with fecal microbiota transplantation to resemble the gut microbiota of healthy individuals.

An alternative for restoration of the gut microbiota of patients is treatment with bacterial products or dietary components that may dampen immune responses, such as purified PSA or SCFA. PSA is effective in EAE models through well-known mechanisms (99), and *in vitro* studies indicate that these results may translate well into humans (116). Therefore, it would be interesting to investigate if PSA would be equally effective in MS patients. Preliminary results of treatment with the dietary component propionic acid in MS patients are promising, as it shows immunological efficacy without safety concerns (136). This makes it a very promising therapeutic that needs to be tested in controlled clinical trials. The efficacy of vitamin D supplementation and reduced salt intake will also need to be tested in large randomized controlled trials.

In conclusion, gut microbiota and dietary interventions are promising treatments for MS, but there are still many questions that need to be investigated before we can conclude which bacterial species and which dietary components play a role in MS pathogenesis and before it will be possible to selectively target detrimental species as a treatment in MS patients.

AUTHOR CONTRIBUTIONS

All the authors developed tables, boxes, and figures. WH prepared and revised the manuscript. BH wrote part of the EAE/MS paragraphs. JL and BH critically reviewed the different versions of the manuscript and provided comments and additional research articles.

ACKNOWLEDGMENTS

The authors thank Mrs. Francesca van Hassel for the artwork and the Dutch MS Research Foundation for ongoing support, including a program grant to the MS Center Noord Nederland.

REFERENCES

- Mielcarz DW, Kasper LH. The gut microbiome in multiple sclerosis. *Curr Treat Options Neurol* (2015) 17:4. doi:10.1007/s11940-015-0344-7
- Dendrou CA, Fugger L, Friese MA. Immunopathology of multiple sclerosis. *Nat Rev Immunol* (2015) 15:545–58. doi:10.1038/nri3871
- Carding S, Verbeke K, Vipond DT, Corfe BM, Owen LJ. Dysbiosis of the gut microbiota in disease. *Microb Ecol Health Dis* (2015) 26:26191. doi:10.3402/mehd.v26.26191
- Grigoriadis N, van Pesch V. A basic overview of multiple sclerosis immunopathology. *Eur J Neurol* (2015) 22:S2. doi:10.1111/ene.12798
- Dusseaux M, Martin E, Serriari N, Peguillet I, Premel V, Louis D, et al. Human MAIT cells are xenobiotic resistant, tissue-targeted, CD161hi IL-17 secreting T cells. *Blood* (2011) 117:1250–60. doi:10.1182/blood-2010-08-303339
- Losy J, Niezgodka A. IL-18 in patients with multiple sclerosis. *Acta Neurol Scand* (2001) 104:171–3. doi:10.1034/j.1600-0404.2001.00356.x
- Willing A, Leach OA, Ufer F, Attfield KE, Steinbach K, Kursawe N, et al. CD8+ MAIT cells infiltrate into the CNS and alterations in their blood frequencies correlate with IL-18 serum levels in multiple sclerosis. *Eur J Immunol* (2014) 44:3119–28. doi:10.1002/eji.201344160
- Abrahamsson SV, Angelini DF, Dubinsky AN, Morel E, Oh U, Jones JL, et al. Non-myeloablative autologous haematopoietic stem cell transplantation expands regulatory cells and depletes IL-17 producing mucosal-associated invariant T cells in multiple sclerosis. *Brain* (2013) 136:2888–903. doi:10.1093/brain/awt182
- Stern JN, Yaari G, Vander Heiden JA, Church G, Donahue WF, Hintzen RQ, et al. B cells populating the multiple sclerosis brain mature in the draining cervical lymph nodes. *Sci Transl Med* (2014) 6:248. doi:10.1126/scitranslmed.3008879
- Goverman J. Autoimmune T cell responses in the central nervous system. *Nat Rev Immunol* (2009) 9:393–407. doi:10.1038/nri2550
- Bhargava P, Mowry EM. Gut microbiome and multiple sclerosis. *Curr Neurol Neurosci Rep* (2014) 14:10. doi:10.1007/s11910-014-0492-2
- Morgan X, Huttenhower C. Chapter 12: human microbiome analysis. *PLoS Comput Biol* (2012) 8:12. doi:10.1371/journal.pcbi.1002808
- Glenn JD, Mowry EM. Emerging concepts on the gut microbiome and multiple sclerosis. *J Interferon Cytokine Res* (2016) 36:347–57. doi:10.1089/jir.2015.0177
- Walter J. Murine gut microbiota – diet trumps genes. *Cell Host Microbe* (2015) 17:3–5. doi:10.1016/j.chom.2014.12.004
- Donaldson GP, Lee SM, Mazmanian SK. Gut biogeography of the bacterial microbiota. *Nat Rev Microbiol* (2015) 14:20–32. doi:10.1038/nrmicro3552
- Quigley EM. Gut bacteria in health and disease. *Gastroenterol Hepatol* (2013) 9:560–9.
- Jandhyala SM, Talukdar R, Subramanyam C, Vuyyuru H, Sasikala M, Nageshwar Reddy D. Role of the normal gut microbiota. *World J Gastroenterol* (2015) 21:8836–47. doi:10.3748/wjg.v21.i29.8787
- Kubinak JL, Round JL. Do antibodies select a healthy microbiota? *Nat Rev Immunol* (2016) 16:767–74. doi:10.1038/nri.2016.114
- Johansson MEV, Sjövall H, Hansson GC. The gastrointestinal mucus system in health and disease. *Nat Rev Gastroenterol Hepatol* (2013) 10:352–61. doi:10.1038/nrgastro.2013.35
- Bergström JH, Birchenough GMH, Katona G, Schroeder BO, Schütte A, Ermund A, et al. Gram-positive bacteria are held at a distance in the colon mucus by the lectin-like protein ZG16. *Proc Natl Acad Sci U S A* (2016) 113:13833–8. doi:10.1073/pnas.1611400113
- Desai MS, Seekatz AM, Koropatkin NM, Kamada N, Hickey CA, Wolter M, et al. A dietary fiber-deprived gut microbiota degrades the colonic mucus barrier and enhances pathogen susceptibility. *Cell* (2016) 167:1339–53. doi:10.1016/j.cell.2016.10.043
- Matarazzo F, Ribeiro AC, Faveri M, Taddei C, Martinez MB, Mayer MPA. The domain archaea in human mucosal surfaces. *Clin Microbiol Infect* (2012) 18:834–40. doi:10.1111/j.1469-0691.2012.03958.x
- Krishnan L, Sprott GD. Archaeosome adjuvants: immunological capabilities and mechanism(s) of action. *Vaccine* (2008) 26:2043–55. doi:10.1016/j.vaccine.2008.02.026
- Bang C, Weidenbach K, Gutschmann T, Heine H, Schmitz RA. The intestinal archaea *Methanospaera stadmanae* and *Methanobrevibacter smithii* activate human dendritic cells. *PLoS One* (2014) 9:6. doi:10.1371/journal.pone.0099411
- Manrique P, Bolduc B, Walk ST, van der Oost J, de Vos WM, Young MJ. Healthy human gut phageome. *Proc Natl Acad Sci U S A* (2016) 113:10400–5. doi:10.1073/pnas.1601060113
- Desbonnet L, Clarke G, Shanahan F, Dinan TG, Cryan JF. Microbiota is essential for social development in the mouse. *Mol Psychiatry* (2014) 19:2. doi:10.1038/mp.2013.65
- Amaral FA, Sachs D, Costa VV, Fagundes CT, Cisalpino D, Cunha TM, et al. Commensal microbiota is fundamental for the development of inflammatory pain. *Proc Natl Acad Sci U S A* (2008) 105:2193–7. doi:10.1073/pnas.0711891105
- Desbonnet L, Garrett L, Clarke G, Kiely B, Cryan JF, Dinan TG. Effects of the probiotic *Bifidobacterium infantis* in the maternal separation model of depression. *Neuroscience* (2010) 170:1179–88. doi:10.1016/j.neuroscience.2010.08.005
- Neufeld K-AM, Kang N, Bienenstock J, Foster JA. Effects of intestinal microbiota on anxiety-like behavior. *Commun Integr Biol* (2011) 4:492–4. doi:10.4161/cib.4.4.15702
- Fung TC, Olson CA, Hsiao EY. Interactions between the microbiota, immune and nervous systems in health and disease. *Nat Neurosci* (2017) 20:145–55. doi:10.1038/nn.4476
- Braniste V, Al-Asmakh M, Kowal C, Anuar F, Abbaspour A, Tóth M. The gut microbiota influences blood-brain barrier permeability in mice. *Sci Transl Med* (2014) 19:6. doi:10.1126/scitranslmed.3009759
- Erny D, Hrabě de Angelis AL, Prinz M. Communicating systems in the body: how microbiota and microglia cooperate. *Immunology* (2016) 150:7–15. doi:10.1111/imm.12645
- Rolig AS, Mittge EK, Ganz J, Troll JV, Melancon E, Wiles TJ, et al. The enteric nervous system promotes intestinal health by constraining microbiota composition. *PLoS Biol* (2017) 15:2. doi:10.1371/journal.pbio.2000689
- Branton WG, Lu JQ, Surette MG, Holt RA, Lind J, Laman JD, et al. Brain microbiota disruption within inflammatory demyelinating lesions in multiple sclerosis. *Sci Rep* (2016) 6:37344. doi:10.1038/srep37344
- Arentsen T, Qian Y, Gkotzis S, Femenia T, Wang T, Udekwu K, et al. The bacterial peptidoglycan-sensing molecule Pglyrp2 modulates brain development and behavior. *Mol Psychiatry* (2017) 22:257–66. doi:10.1038/mp.2016.182
- Wekerle H, Berer K, Krishnamoorthy G. Remote control-triggering of brain autoimmune disease in the gut. *Curr Opin Immunol* (2013) 25:683–9. doi:10.1016/j.coi.2013.09.009
- Geva-Zatorsky N, Sefik E, Kua L, Pasman L, Tan TG, Ortiz-Lopez A, et al. Mining the human gut microbiota for immunomodulatory organisms. *Cell* (2017) 168:928–43. doi:10.1016/j.cell.2017.01.022
- Morrison PJ, Bending D, Fouser LA, Wright JF, Stockinger B, Cooke A, et al. Th17 cell plasticity in *Helicobacter hepaticus*-induced intestinal inflammation. *Mucosal Immunol* (2013) 6:6. doi:10.1038/mi.2013.11
- Pescovitz MD, Torgerson TR, Ochs HD, Ocheltree E, McGee P, Krause-Steinrauf H, et al. Effect of rituximab on human *in vivo* antibody immune responses. *J Allergy Clin Immunol* (2011) 128:1295–302. doi:10.1016/j.jaci.2011.08.008
- Srivastava AS, Kaido S, Carrier E. Immunological factors that affect the *in vivo* fate of T7 phage in the mouse. *J Virol Methods* (2004) 115:99–104. doi:10.1016/j.jviromet.2003.09.009
- Górski A, Miedzybrodski R, Borysowski J, Dabrowska K, Wierzbicki P, Ohams M, et al. Phage as a modulator of immune responses: practical implications for phage therapy. *Adv Virus Res* (2012) 83:41–71. doi:10.1016/B978-0-12-394438-2.00002-5
- Ransohoff RM. Animal models of multiple sclerosis: the good, the bad and the bottom line. *Nat Neurosci* (2012) 15:1074–7. doi:10.1038/nn.3168
- Simmons SB, Pierson ER, Lee SY, Goverman JM. Modeling the heterogeneity of multiple sclerosis in animals. *Trends Immunol* (2013) 34:410–22. doi:10.1016/j.it.2013.04.006
- Procaccini C, De Rosa V, Pucino V, Formisano L, Matarese G. Animal models of multiple sclerosis. *Eur J Pharmacol* (2015) 759:182–91. doi:10.1016/j.ejphar.2015.03.042
- † Hart BA, van Kooyk Y, Geurts JGG, Gran B. The primate autoimmune encephalomyelitis model; a bridge between mouse and man. *Ann Clin Transl Neurol* (2015) 2:581–93. doi:10.1002/acn3.194

46. Goverman J, Woods A, Larson L, Weiner LP, Hood L, Zaller DM. Transgenic mice that express a myelin basic protein-specific T cell receptor develop spontaneous autoimmunity. *Cell* (1993) 72:551–60. doi:10.1016/0092-8674(93)90074-Z
47. Berer K, Mues M, Koutrolos M, Rasbi ZA, Boziki M, Johnner C, et al. Commensal microbiota and myelin autoantigen cooperate to trigger autoimmune demyelination. *Nature* (2011) 479:538–41. doi:10.1038/nature10554
48. Lee YK, Menezes JS, Umesaki Y, Mazmanian SK. Proinflammatory T-cell responses to gut microbiota promote experimental autoimmune encephalomyelitis. *Proc Natl Acad Sci U S A* (2011) 108:4615–22. doi:10.1073/pnas.100082107
49. Yokote H, Miyake S, Croxford JL, Oki S, Mizusawa H. NKT cell-dependent amelioration of a mouse model of multiple sclerosis by altering gut flora. *Am J Pathol* (2008) 173:1714–23. doi:10.2353/ajpath.2008.080622
50. Ochoa-Repáraz J, Mielcarz DW, Ditrio LE, Burroughs AR, Foureau DM, Hague-Begum S, et al. Role of gut commensal microflora in the development of experimental autoimmune encephalomyelitis. *J Immunol* (2009) 183:6041–50. doi:10.4049/jimmunol.0900747
51. Ochoa-Repáraz J, Mielcarz DW, Hague-Begum S, Kasper LH. Induction of a regulatory B cell population in experimental allergic encephalomyelitis by alteration of the gut commensal microflora. *Gut Microbes* (2010) 1:103–8. doi:10.4161/gmic.1.2.11515
52. Ochoa-Repáraz J, Mielcarz DW, Ditrio LE, Burroughs AR, Begum-Haque S, Dasgupta S, et al. Central nervous system demyelinating disease protection by the human commensal *Bacteroides fragilis* depends on polysaccharide A expression. *J Immunol* (2010) 185:4101–8. doi:10.4049/jimmunol.1001443
53. Ezendam J, de Klerk A, Gremmer ER, Van Loveren H. Effects of *Bifidobacterium animalis* administered during lactation on allergic and autoimmune responses in rodents. *Clin Exp Immunol* (2008) 154:424–31. doi:10.1111/j.1365-2249.2008.03788.x
54. Lavasani S, Dzhambazov B, Nouri M, Fák F, Buske S, Molin G, et al. A novel probiotic mixture exerts a therapeutic effect on experimental autoimmune encephalomyelitis mediated by IL-10 producing regulatory T cells. *PLoS One* (2010) 5:2. doi:10.1371/journal.pone.0009009
55. Takata K, Kinoshita M, Okuno T, Moriya M, Kohda T, Honorat JA, et al. The lactic acid bacterium *Pediococcus acidilactici* suppresses autoimmune encephalomyelitis by inducing IL-10-producing regulatory T cells. *PLoS One* (2011) 6:11. doi:10.1371/journal.pone.0027644
56. Maassen CBM, Claassen E. Strain-dependent effects of probiotic lactobacilli on EAE autoimmunity. *Vaccine* (2008) 26:2056–7. doi:10.1016/j.vaccine.2008.02.035
57. Kwon HK, Kim GC, Kim Y, Hwang W, Jash A, Sahoo A, et al. Amelioration of experimental autoimmune encephalomyelitis by probiotic mixture is mediated by a shift in T helper cell immune response. *Clin Immunol* (2013) 146:217–27. doi:10.1016/j.clim.2013.01.001
58. Rezende RM, Oliveira RP, Medeiros SR, Gomes-Santos AC, Alves AC, Loli FG, et al. Hsp65-producing *Lactococcus lactis* prevents experimental autoimmune encephalomyelitis in mice by inducing CD4+LAP+ regulatory T cells. *J Autoimmun* (2013) 40:45–57. doi:10.1016/j.jaut.2012.07.012
59. Ochoa-Repáraz J, Mielcarz DW, Wang Y, Begum-Haque S, Dasgupta S, Kasper DL, et al. A polysaccharide from the human commensal *Bacteroides fragilis* protects against CNS demyelinating disease. *Mucosal Immunol* (2010) 3:487–95. doi:10.1038/mi.2010.29
60. Wang Y, Telesford KM, Ochoa-Repáraz J, Haque-Begum S, Christy M, Kasper EJ, et al. An intestinal commensal symbiosis factor controls neuroinflammation via TLR2-mediated CD39 signalling. *Nat Commun* (2014) 5:4432–42. doi:10.1038/ncomms5432
61. Wang Y, Begum-Haque S, Telesford KM, Ochoa-Repáraz J, Christy M, Kasper EJ, et al. A commensal bacterial product elicits and modulates migratory capacity of CD39+ CD4 T regulatory subsets in the suppression of neuroinflammation. *Gut Microbes* (2014) 5:552–61. doi:10.4161/gmic.29797
62. Kadowaki A, Miyake S, Saga R, Chiba A, Mochizuki H, Yamamura T. Gut environment-induced intraepithelial autoreactive CD4(+) T cells suppress central nervous system autoimmunity via LAG-3. *Nat Commun* (2016) 7:11639. doi:10.1038/ncomms11639
63. Maassen CBM, Laman JD, van Holten-Neelen C, Hoogteijling L, Groenewegen L, Visser L, et al. Reduced experimental autoimmune encephalomyelitis after intranasal and oral administration of recombinant lactobacilli expressing myelin antigens. *Vaccine* (2003) 21:4685–93. doi:10.1016/S0264-410X(03)00522-X
64. Haghikia A, Jörg S, Duscha A, Berg J, Manzel A, Waschbisch A, et al. Dietary fatty acids directly impact central nervous system autoimmunity via the small intestine. *Immunity* (2015) 43:817–29. doi:10.1016/j.immuni.2015.09.007
65. Lemire JM, Archer DC. 1,25-Dihydroxyvitamin D3 prevents the *in vivo* induction of murine experimental autoimmune encephalomyelitis. *J Clin Invest* (1991) 87:1103–7. doi:10.1172/JCI115072
66. Cantorna MT, Hayes CE, Deluca HF. 1,25-Dihydroxyvitamin D3 reversibly blocks the progression of relapsing encephalomyelitis, a model of multiple sclerosis. *Proc Natl Acad Sci U S A* (1996) 93:7861–4. doi:10.1073/pnas.93.15.7861
67. Spach KM, Nashold FE, Dittel BN, Hayes CE. IL-10 signaling is essential for 1,25-dihydroxyvitamin D3-mediated inhibition of experimental autoimmune encephalomyelitis. *J Immunol* (2006) 177:6030–7. doi:10.4049/jimmunol.177.9.6030
68. Piccio L, Stark JL, Cross AH. Chronic calorie restriction attenuates experimental autoimmune encephalomyelitis. *J Leukoc Biol* (2008) 84:940–8. doi:10.1189/jlb.0208133
69. Esquifino AI, Cano P, Jimenez-Ortega V, Fernández-Mateos MP, Cardinali DP. Immune response after experimental allergic encephalomyelitis in rats subjected to calorie restriction. *J Neuroinflammation* (2007) 4:6. doi:10.1186/1742-2094-4-6
70. Kafami L, Raza M, Razavi A, Mirshafiey A, Movahedian M, Khorramizadeh MR. Intermittent feeding attenuates clinical course of experimental autoimmune encephalomyelitis in C57Bl/6 mice. *Avicenna J Med Biotechnol* (2010) 2:47–52.
71. Harbige LS, Layward L, Morris-Downes MM, Dumonde DC, Armor S. The protective effects of omega-6 fatty acids in experimental autoimmune encephalomyelitis (EAE) in relapsing transforming growth factor-beta 1 (TGF-β1) upregulation and increased prostaglandin E2 (PGE2) production. *Clin Exp Immunol* (2000) 122:445–52. doi:10.1046/j.1365-2249.2000.01399.x
72. Harbige LS, Yeatman N, Amor S, Crawford MA. Prevention of experimental autoimmune encephalomyelitis in Lewis rats by a novel fungal source of gamma-linolenic acid. *Br J Nutr* (1995) 74:701–15. doi:10.1079/BJN19950173
73. Kong W, Jui-Hung Y, Ganea D. Ducusahexanoic acid prevents dendritic cell maturation, inhibits antigen-specific Th1/Th17 differentiation and suppresses experimental autoimmune encephalomyelitis. *Brain Behav Immun* (2011) 25:872–82. doi:10.1016/j.bbi.2010.09.012
74. Unoda K, Doi Y, Nakajima H, Yamane K, Hosokawa T, Ishida S, et al. Eicosapentaenoic acid (EPA) induces peroxisome proliferator-activated receptors and ameliorates experimental autoimmune encephalomyelitis. *J Neuroimmunol* (2013) 256:7–12. doi:10.1016/j.jneuroim.2012.12.003
75. Salvati S, Di Biase A, Attorri L, Di Benedetto R, Sanchez M, Lorenzini L, et al. Ethyleicosapentaenoic acid ameliorates the clinical course of experimental allergic encephalomyelitis induced in dark agouti rats. *J Nutr Biochem* (2013) 24:1645–54. doi:10.1016/j.jnutbio.2013.02.005
76. Kim DY, Hao J, Liu R, Turner G, Shi FD, Rho JM. Inflammation-mediated memory dysfunction and effects of a ketogenic diet in a murine model of multiple sclerosis. *PLoS One* (2012) 7:5. doi:10.1371/journal.pone.0035476
77. Choi IY, Piccio L, Childress P, Bollman B, Ghosh A, Brandhorst S, et al. A diet mimicking fasting promotes regeneration and reduces autoimmunity and multiple sclerosis symptoms. *Cell Rep* (2016) 15:2136–46. doi:10.1016/j.celrep.2016.05.009
78. Jörg S, Kissel J, Manzel A, Kleinewietfeld M, Haghikia A, Gold R, et al. High salt drives Th17 responses in experimental autoimmune encephalomyelitis without impacting myeloid dendritic cells. *Exp Neurol* (2016) 279:212–22. doi:10.1016/j.expneurol.2016.03.010
79. Kremontsov DN, Casse LK, Hickey WF, Teuscher C. Exacerbation of autoimmune neuroinflammation by dietary sodium is genetically controlled and sex specific. *FASEB J* (2015) 29:3446–57. doi:10.1096/fj.15-272542
80. Wu C, Yosef N, Thalhamer T, Zhu C, Xiao S, Kishi Y, et al. Induction of pathogenic Th17 cells by inducible salt sensing kinase SGK1. *Nature* (2013) 496:513–7. doi:10.1038/nature11984

81. Kleinewietfeld M, Manzel A, Titze J, Kvakana H, Yosef N, Linker RA, et al. Sodium chloride drives autoimmune disease by the induction of pathogenic Th17 cells. *Nature* (2013) 496:518–22. doi:10.1038/nature11868
82. Veldhoen M, Hirota K, Westendorp AM, Buer J, Dumoutier L, Renauld JC, et al. The aryl hydrocarbon receptor links TH17-cell-mediated autoimmunity to environmental toxins. *Nature* (2008) 453:106–9. doi:10.1038/nature06881
83. Quintana FJ, Basso AS, Iglesias AH, Korn T, Farez MF, Bettelli E, et al. Control of Treg and Th17 cell differentiation by the aryl hydrocarbon receptor. *Nature* (2008) 453:65–71. doi:10.1038/nature06880
84. Rothhammer V, Maccanfroni I, Bunse L, Takenaka M, Kenison JE, Mayo L. Type I interferons and microbial metabolites of tryptophan modulate astrocyte activity and central nervous system inflammation via the aryl hydrocarbon receptor. *Nat Med* (2016) 22:586–97. doi:10.1038/nm.4106
85. Stoye D, Schubert C, Goil A, Guttek K, Reinhold A, Brocke S, et al. Zinc aspartate suppresses T cell activation *in vitro* and relapsing experimental autoimmune encephalomyelitis in SJL/J mice. *Biomaterials* (2012) 25:529–39. doi:10.1007/s10534-012-9532-z
86. Schubert C, Guttek K, Grungreiff K, Thielitz A, Bühlung F, Reinhold A, et al. Oral zinc aspartate treats experimental autoimmune encephalomyelitis. *Biomaterials* (2014) 27:375–86. doi:10.1007/s10534-014-9786-8
87. Kitabayashi C, Fukada T, Kanamoto M, Ohashi W, Hojyo S, Atsumi T, et al. Zinc suppresses Th17 development via inhibition of STAT3 activation. *Int Immunol* (2010) 22:375–86. doi:10.1093/intimm/dxq017
88. Rosenkranz E, Maywald M, Hilgers RD, Brieger A, Clarner T, Kipp M, et al. Induction of regulatory T cells in Th1-/Th17-driven experimental autoimmune encephalomyelitis by zinc administration. *J Nutr Biochem* (2016) 29:116–23. doi:10.1016/j.jnutbio.2015.11.010
89. Scelsi R, Savoldi F, Ceroni M, Allegrini M, Poggi P. Selenium and experimental allergic encephalomyelitis. *J Neurol Sci* (1983) 61:369–79. doi:10.1016/0022-510X(83)90170-3
90. Chanaday NL, De Bem AF, Roth GA. Effect of diphenyl diselenide on the development of experimental autoimmune encephalomyelitis. *Neurochem Int* (2011) 59(1155):62. doi:10.1016/j.neuint.2011.10.004
91. Xue H, Ren H, Zhang L, Sun X, Wang W, Zhang S, et al. Alpha-tocopherol ameliorates experimental autoimmune encephalomyelitis through the regulation of Th1 cells. *Iran J Basic Med Sci* (2016) 19:561–6.
92. Blanchard B, Heurtaux T, Garcia C, Moll NM, Caillava C, Grandbarbe L, et al. Tocopherol derivative TFA-12 promotes myelin repair in experimental models of multiple sclerosis. *J Neurosci* (2013) 33:11633–42. doi:10.1523/JNEUROSCI.0774-13.2013
93. Racke MK, Burnett D, Pak SH, Albert PS, Cannella B, Raine CS, et al. Retinoid treatment of experimental allergic encephalomyelitis. IL-4 production correlates with improved disease course. *J Immunol* (1995) 154:450–8.
94. Zhan XX, Lui Y, Yang JF, Wang GY, Mu L, Zhang TS, et al. All-trans-retinoic acid ameliorates experimental allergic encephalomyelitis by affecting dendritic cell and monocyte development. *Immunology* (2013) 138:333–45. doi:10.1111/imm.12040
95. Xiao S, Jin H, Korn T, Lui SM, Oukka M, Lim B, et al. Retinoic acid increases Foxp3+ regulatory T cells and inhibits development of Th17 cells by enhancing TGF- β -driven Smad3 signalling and inhibiting IL-6 and IL-23 receptor expression. *Immunology* (2008) 181:2277–84. doi:10.4049/jimmunol.181.4.2277
96. Atarashi K, Nishimura J, Shima T, Umesaki Y, Yamamoto M, Onoue M, et al. ATP drives lamina propria Th17 cell differentiation. *Nature* (2008) 455:808–12. doi:10.1038/nature07240
97. Huizinga R, Kreft KL, Onderwater S, Boonstra JG, Brands R, Hintzen RQ, et al. Endotoxin- and ATP-neutralizing activity of alkaline phosphatase as a strategy to limit neuroinflammation. *J Neuroinflammation* (2012) 9:266. doi:10.1186/1742-2094-9-266
98. Beura LK, Hamilton SE, Bi K, Schenkel JM, Odumade OA, Casey KA, et al. Normalizing the environment recapitulates adult human immune traits in laboratory mice. *Nature* (2016) 532:512–6. doi:10.1038/nature17655
99. Ochoa-Repáraz J, Kasper LH. The influence of gut-derived CD39 regulatory T cells in CNS demyelinating disease. *Transl Res* (2017) 179:126–38. doi:10.1016/j.trsl.2016.07.016
100. Furusawa Y, Obata Y, Hase K. Commensal microbiota regulates T cell fate decision in the gut. *Semin Immunopathol* (2015) 37:17–25. doi:10.1007/s00281-014-0455-3
101. Maassen CBM, van Holten-Neelen C, Balk F, Heijne den Bak-Glashouwer M-J, Leer RJ, Laman JD, et al. Strain-dependent induction of cytokine profiles in the gut by orally administered *Lactobacillus* strains. *Vaccine* (2000) 18:2613–23. doi:10.1016/S0264-410X(99)00378-3
102. Maassen CBM, Boersma WG, van Holten-Neelen C, Claassen E, Laman JD. Growth phase of orally administered *Lactobacillus* strains differentially affects IgG1/IgG2a ratio for soluble antigens: implications for vaccine development. *Vaccine* (2003) 21:2751–7. doi:10.1016/S0264-410X(03)00220-2
103. Mancera P, Wappenhans B, Cordobilla B, Virgili N, Pugliese M, Rueda F, et al. Natural docosahexaenoic acid in the triglyceride form attenuates *in vitro* microglial activation and ameliorates autoimmune encephalomyelitis in mice. *Nutrients* (2017) 9:681. doi:10.3390/nu9070681
104. Patterson E, O'Doherty RM, Murphy EF, Wall R, O'Sullivan O, Nilaweera K, et al. Impact of dietary fatty acids on metabolic activity and host intestinal microbiota composition in C57BL/6J mice. *Br J Nutr* (2014) 111:1905–17. doi:10.1017/S0007114514000117
105. Xie Z, Chen J, Zheng C, Wu J, Cheng Y, Zhu S, et al. 1,25-dihydroxyvitamin D3 induced dendritic cells suppress experimental autoimmune encephalomyelitis by increasing proportions of regulatory lymphocytes and reducing Th1, Th17 cells. *Immunology* (2017). doi:10.1111/imm.12776
106. Correale J, Ysraeli MC, Gaini MI. Immunomodulatory effects of Vitamin D in multiple sclerosis. *Brain* (2009) 132:1146–60. doi:10.1093/brain/awp033
107. Goudarzvand M, Javan M, Mirnajafi-Zadeh J, Mozafari S, Tiraihi T. Vitamins E and D3 attenuate demyelination and potentiate remyelination processes of hippocampal formation of rats following local injection of ethidium bromide. *Cell Mol Neurobiol* (2010) 30:289–99. doi:10.1007/s10571-009-9451-x
108. Clark A, Mach N. Role of vitamin D in the hygiene hypothesis: the interplay between vitamin D, vitamin D receptors, gut microbiota, and immune response. *Front Immunol* (2016) 7:627. doi:10.3389/fimmu.2016.00627
109. Mayneris-Perxachs J, Bolick DT, Leng J, Medlock GL, Kolling GL, Papin JA, et al. Protein- and zinc-deficient diets modulate the murine microbiome and metabolic phenotype. *Am J Clin Nutr* (2016) 104:1253–62. doi:10.3945/ajcn.116.131797
110. Xu J, Drew PD. 9-Cis-retinoic acid suppresses inflammatory responses of microglia and astrocytes. *J Neuroimmunol* (2006) 171:135–44. doi:10.1016/j.jneuroim.2005.10.004
111. Quévrain E, Maubert MA, Michon C, Chain F, Marquant R, Tailhades J, et al. Identification of an anti-inflammatory protein from *Faecalibacterium prausnitzii*, a commensal bacterium deficient in Crohn's disease. *Gut* (2016) 65:415–25. doi:10.1136/gutjnl-2014-307649
112. Jangi S, Gandhi R, Cox LM, Li N, von Glehn F, Yan R, et al. Alterations of the human gut microbiome in multiple sclerosis. *Nat Commun* (2016) 7:12015. doi:10.1038/ncomms12015
113. Lupp C, Robertson ML, Wickham ME, Sekirov I, Champion OL, Gaynor EC, et al. Host-mediated inflammation disrupts the intestinal microbiota and promotes the overgrowth of enterobacteriaceae. *Cell Host Microbe* (2007) 2:119–29. doi:10.1016/j.chom.2007.06.010
114. Scheperjans F, Aho V, Pereira PA, Koskinen K, Paulin L, Pekkonen E, et al. Gut microbiota are related to Parkinson's disease and clinical phenotype. *Mov Disord* (2015) 30:350–8. doi:10.1002/mds.26069
115. Tremlett H, Fadrosch DW, Faruqi AA, Zhu F, Hart J, Roalstad S, et al. Gut microbiota in early pediatric multiple sclerosis: a case – control study. *Eur J Neurol* (2016) 23:1308–21. doi:10.1111/ene.13026
116. Telesford KM, Yan W, Ochoa-Reparaz J, Pant A, Kircher C, Christy MA, et al. A commensal symbiotic factor derived from *Bacteroides fragilis* promotes human CD39+ Foxp3+ T cells and T_{reg} function. *Gut Microbes* (2015) 6:234–42. doi:10.1080/19490976.2015.1056973
117. Tremlett H, Fadrosch DW, Faruqi AA, Hart J, Roalstad S, Graves J, et al. Gut microbiota composition and relapse risk in pediatric MS: a pilot study. *J Neurol Sci* (2016) 363:153–7. doi:10.1016/j.jns.2016.02.042
118. Tremlett H, Fadrosch DW, Faruqi AA, Hart J, Roalstad S, Graves J, et al. Associations between immune markers and gut microbiota in pediatric multiple sclerosis and controls. *Neurology* (2016) 16:182. doi:10.1186/s12883-016-0703-3

119. Miyake S, Kim S, Suda W, Oshima K, Nakamura M, Matsuoka T, et al. Dysbiosis in the gut microbiota of patients with multiple sclerosis, with a striking depletion of species belonging to clostridia XIVa and IV clusters. *PLoS One* (2015) 10:9. doi:10.1371/journal.pone.0137429
120. Chen J, Chia N, Kalari KR, Yao JZ, Novotna M, Soldan MMP, et al. Multiple sclerosis patients have a distinct gut microbiota compared to healthy controls. *Nat Sci Rep* (2016) 6:28484. doi:10.1038/srep28484
121. Jangi S, Gandhi R, Glanz B, Cook S, Nejad P, Ward D, et al. Increased archaea species and changes with therapy in gut microbiome of multiple sclerosis subjects. *Neurology* (2014) 82:Suppl.24.001.
122. Baum K, Rejmsu R, Dörffel Y. Commensal gut flora in MS: spatial organization and composition. *Mult Scler* (2015) 21(Suppl 11):458–9.
123. Cantarel BL, Waubrant E, Chehoud C, Kuczynski J, DeSantis TZ, Warrington J, et al. Gut microbiota in MS: possible influence of immunomodulators. *J Investig Med* (2015) 63:729–34. doi:10.1097/JIM.000000000000192
124. Sand IK, Baranzini S, Knight R, Farber RS, Bencosme Y, Kanner R, et al. The MS microbiome consortium (MSMC): an academic multi-disciplinary collaborative effort to elucidate the role of the gut microbiota in MS. *Neurology* (2015) 84(14 Suppl):2.205.
125. Tankou S, Bry L, Gerber G, Lin N, Glanz B, Cook S, et al. Effect of vitamin D level in the gut microbiome of MS patients. *Neurology* (2015) 84(14 Suppl):2.206.
126. Bates D, Cartledge NE, French JM, Jackson MJ, Nightingale S, Shaw DA, et al. A double-blind controlled trial of long chain n-3 polyunsaturated fatty acids in the treatment of multiple sclerosis. *J Neurol Neurosurg Psychiatry* (1989) 52:18–22. doi:10.1136/jnnp.52.1.18
127. Weinstock-Guttman B, Baier M, Park Y, Feichter J, Lee-Kwen P, Gallagher E, et al. Low fat dietary intervention with omega-3 fatty acid supplementation in multiple sclerosis patients. *Prostaglandins Leukot Essent Fatty Acids* (2005) 73:397–404. doi:10.1016/j.plefa.2005.05.024
128. Torkildsen Ø, Wergeland S, Bakke S, Beiske AG, Bjerve KS, Hovdal H, et al. ω-3 fatty acid treatment in multiple sclerosis (OFAMS study). *Arch Neurol* (2012) 69:1044–51. doi:10.1001/archneurol.2012.283
129. Bates D, Fawcett PR, Shaw DA, Weightman D. Trials of polyunsaturated fatty acids in non-relapsing multiple sclerosis. *Br Med J* (1977) 2:932–3. doi:10.1136/bmj.2.6096.1217-a
130. Bates D, Fawcett PR, Shaw DA, Weightman D. Polyunsaturated fatty acids in treatment of acute remitting multiple sclerosis. *Br Med J* (1978) 2:1390–1. doi:10.1136/bmj.2.6149.1390
131. Harbige LS, Sharief MK. Polyunsaturated fatty acids in the pathogenesis and treatment of multiple sclerosis. *Br J Nutr* (2007) 98:46–53. doi:10.1017/S0007114507833010
132. Jafarirad S, Siassi F, Harirchian M-H, Sahraian M-A, Eshraghian M-R, Shokri F, et al. The effect of vitamin A supplementation on stimulated T-cell proliferation with myelin oligodendrocyte glycoprotein in patients with multiple sclerosis. *J Neurosci Rural Pract* (2012) 3:294–8. doi:10.4103/0976-3147.102609
133. Wingerschuk DM. A pilot study of oral calcitriol (1,25-dihydroxyvitamin D3) for relapsing-remitting multiple sclerosis. *J Neurol Neurosurg Psychiatry* (2005) 76:1294–6. doi:10.1136/jnnp.2004.056499
134. Mahon B, Gordon S, Cruz J, Cosman F, Cantorna M. Cytokine profile in patients with multiple sclerosis following vitamin D supplementation. *J Neuroimmunol* (2003) 134:128–32. doi:10.1016/S0165-5728(02)00396-X
135. Goldberg P, Fleming MC, Picard EH. Multiple sclerosis: decreased relapse rate through dietary supplementation with calcium, magnesium and vitamin D. *Med Hypotheses* (1986) 21:193–200. doi:10.1016/0306-9877(86)90010-1
136. Haghikia A, Duscha A, Berg J, Jörg S, Wilck N, Müller D, et al. Role of fatty acids in multiple sclerosis: therapeutic potential of propionic acid. *Neurology* (2016) 86(16):Suppl.1.374.
137. Farez MF, Fiol MP, Gaitán M, Quintana FJ, Correale J. Sodium intake is associated with increased disease activity in multiple sclerosis. *J Neurol Neurosurg Psychiatry* (2015) 86:26–31. doi:10.1136/jnnp-2014-307928
138. Hadgkiss EJ, Jelinek GA, Weiland TJ, Pereira NG, Marck CH, van der Meer DM. The association of diet with quality of life, disability, and relapse rate in an international sample of people with multiple sclerosis. *Nutr Neurosci* (2015) 18:125–36. doi:10.1179/1476830514Y.0000000117
139. Rezapour-Firouzi S, Arefhosseini SR, Mehdi F, Mehrangiz EM, Baradaran B, Sadeghihokmabad E, et al. Immunomodulatory and therapeutic effects of hot-nature diet and co-supplemented hemp seed, evening primrose oils intervention in multiple sclerosis patients. *Complement Ther Med* (2013) 7:2891–901. doi:10.1016/j.ctim.2013.06.006
140. Nordvik I, Myhr KM, Nyland H, Bjerve KS. Effect of dietary advice and n-3 supplementation in newly diagnosed MS patients. *Acta Neurol Scand* (2000) 102:143–9. doi:10.1034/j.1600-0404.2000.102003143.x
141. Schmitz K, Barthelmes J, Stolz L, Beyer S, Diehl O, Tegeder I. “Disease modifying nutraceuticals” for multiple sclerosis. *Pharmacol Ther* (2015) 148:85–113. doi:10.1016/j.pharmthera.2014.11.015
142. Powell JJ, Thomas-McKay E, Thoree V, Robertson J, Hewitt RE, Skepper JN, et al. An endogenous nanomineral chaperones luminal antigen and peptidoglycan to intestinal immune cells. *Nat Nanotechnol* (2015) 10:361–9. doi:10.1038/nnano.2015.19
143. Kanneganti TD, Lamkanfi M, Núñez G. Intracellular NOD-like receptors in host defense and disease. *Immunity* (2007) 27:549–59. doi:10.1016/j.immuni.2007.10.002
144. Hergot CB, Roche AM, Tamashiro E, Clarke TB, Bailey AG, Laughlin A, et al. Peptidoglycan from the gut microbiota governs the lifespan of circulating phagocytes at homeostasis. *Blood* (2016) 127:2460–71. doi:10.1182/blood-2015-10-675173
145. Visser L, Jan de Heer H, Boven LA, van Riel D, van Meurs M, Melief MJ, et al. Proinflammatory bacterial peptidoglycan as a cofactor for the development of central nervous system autoimmune disease. *J Immunol* (2005) 174:808–16. doi:10.4049/jimmunol.174.2.808
146. Visser L, Melief MJ, van Riel D, van Meurs M, Sick EA, Inamura S, et al. Phagocytes containing a disease-promoting Toll-like receptor/Nod ligand are present in the brain during demyelinating disease in primates. *Am J Pathol* (2006) 169:1671–85. doi:10.2353/ajpath.2006.060143
147. Schrijver IA, van Meurs M, Melief MJ, Wim Ang C, Buljevac D, Ravid R, et al. Bacterial peptidoglycan and immune reactivity in the central nervous system in multiple sclerosis. *Brain* (2001) 124:1544–54. doi:10.1093/brain/124.8.1544
148. Luthold RV, Fernandes GR, Franco-de-Moraes AC, Folchetti LGD, Ferreira SRG. Gut microbiota interactions with the immunomodulatory role of vitamin D in normal individuals. *Metabolism* (2017) 69:76–86. doi:10.1016/j.metabol.2017.01.007
149. Gupta S. Diet: changing the recipe. *Nature* (2016) 540:S13–4. doi:10.1038/540S13a
150. Krumbek JA, Maldonado-Gomez MX, Ramer-Tait AE, Hutkins RW. Prebiotics and synbiotics: dietary strategies for improvign gut health. *Curr Opin Gastroenterol* (2016) 32:110–9. doi:10.1097/MOG.0000000000000249
151. Preidis GA, Versalovic J. Targeting the human microbiome with antibiotics, probiotics, and prebiotics: gastroenterology enters the metagenomics era. *Gastroenterology* (2009) 136:2015–31. doi:10.1053/j.gastro.2009.01.072
152. Chan BK, Abedon ST, Loc-Carrillo C. Phage cocktails and the future of phage therapy. *Future Microbiol* (2013) 8:769–83. doi:10.2217/fmb.13.47
153. Choi HH, Cho Y-S. Fecal microbiota transplantation: current applications, effectiveness, and future perspectives. *Clin Endosc* (2016) 49:257–65. doi:10.5946/ce.2015.117
154. Fuller R. Probiotics in human medicine. *Gut* (1991) 32:439–42. doi:10.1136/gut.32.4.439
155. Gibson GR, Roberfroid MB. Dietary modulation of the human colonic microbiota: introducing the concept of prebiotics. *J Nutr* (1995) 125:1401–12.

Conflict of Interest Statement: The authors declare that the research was conducted in the absence of any commercial or financial relationships that could be construed as a potential conflict of interest.

Copyright © 2017 van den Hoogen, Laman and 't Hart. This is an open-access article distributed under the terms of the Creative Commons Attribution License (CC BY). The use, distribution or reproduction in other forums is permitted, provided the original author(s) or licensor are credited and that the original publication in this journal is cited, in accordance with accepted academic practice. No use, distribution or reproduction is permitted which does not comply with these terms.