

University of Groningen

ALFALFA and WSRT Imaging of Extended H I Features in the Leo Cloud of Galaxies

Leisman, Lukas; Haynes, Martha P.; Giovanelli, Riccardo; Józsa, Gyula; Adams, Elizabeth A. K.; Hess, Kelley M.

Published in:
Monthly Notices of the Royal Astronomical Society

DOI:
[10.1093/mnras/stw2083](https://doi.org/10.1093/mnras/stw2083)

IMPORTANT NOTE: You are advised to consult the publisher's version (publisher's PDF) if you wish to cite from it. Please check the document version below.

Document Version
Publisher's PDF, also known as Version of record

Publication date:
2016

[Link to publication in University of Groningen/UMCG research database](#)

Citation for published version (APA):

Leisman, L., Haynes, M. P., Giovanelli, R., Józsa, G., Adams, E. A. K., & Hess, K. M. (2016). ALFALFA and WSRT Imaging of Extended H I Features in the Leo Cloud of Galaxies. *Monthly Notices of the Royal Astronomical Society*, 463(2), 1692-1706. <https://doi.org/10.1093/mnras/stw2083>

Copyright

Other than for strictly personal use, it is not permitted to download or to forward/distribute the text or part of it without the consent of the author(s) and/or copyright holder(s), unless the work is under an open content license (like Creative Commons).

The publication may also be distributed here under the terms of Article 25fa of the Dutch Copyright Act, indicated by the "Taverne" license. More information can be found on the University of Groningen website: <https://www.rug.nl/library/open-access/self-archiving-pure/taverne-amendment>.

Take-down policy

If you believe that this document breaches copyright please contact us providing details, and we will remove access to the work immediately and investigate your claim.

Downloaded from the University of Groningen/UMCG research database (Pure): <http://www.rug.nl/research/portal>. For technical reasons the number of authors shown on this cover page is limited to 10 maximum.

ALFALFA and WSRT imaging of extended H I features in the Leo Cloud of galaxies

Lukas Leisman,^{1*} Martha P. Haynes,¹ Riccardo Giovanelli,¹ Gyula Józsa,^{2,3,4}
Elizabeth A. K. Adams⁵ and Kelley M. Hess^{5,6}

¹Cornell Center for Astrophysics and Planetary Science, Space Sciences Building, Cornell University, Ithaca, NY 14853, USA

²SKA South Africa Radio Astronomy Research Group, 3rd Floor, The Park, Park Road, Pinelands 7405, South Africa

³Rhodes Centre for Radio Astronomy Techniques and Technologies, Department of Physics and Electronics, Rhodes University, PO Box 94, Grahamstown 6140, South Africa

⁴Argelander-Institut für Astronomie, Auf dem Hügel 71, D-53121 Bonn, Germany

⁵ASTRON, the Netherlands Institute for Radio Astronomy, Postbus 2, NL-7990 AA Dwingeloo, the Netherlands

⁶Kapteyn Astronomical Institute, University of Groningen, PO Box 800, NL-9700 AV Groningen, the Netherlands

Accepted 2016 August 17. Received 2016 August 12; in original form 2016 May 18

ABSTRACT

We present Arecibo Legacy Fast ALFA (ALFALFA) H I observations of a well-studied region of the Leo Cloud, which includes the NGC 3227 group and the NGC 3190 group. We detect optically dark H I tails and plumes with extents potentially exceeding 600 kpc, well beyond the field of view of previous observations. These H I features contain ~ 40 per cent of the total H I mass in the NGC 3227 group and ~ 10 per cent of the NGC 3190 group. We also present Westerbork Synthesis Radio Telescope (WSRT) maps which show the complex morphology of the extended emission in the NGC 3227 group. We comment on previously proposed models of the interactions in these groups and the implications for the scale of group processing through interactions. Motivated by the extent of the H I plumes, we place the H I observations in the context of the larger loose group, demonstrating the need for future sensitive, wide field H I surveys to understand the role of group processing in galaxy evolution.

Key words: galaxies: evolution – galaxies: groups: individual: NGC 3190 – galaxies: groups: individual: NGC 3227 – galaxies: groups: individual: HCG 44 – radio lines: galaxies.

1 INTRODUCTION

Most galaxies at $z \sim 0$ can be found in group environments (e.g. Tago et al. 2008), where evidence of tidal interactions and gas stripping are particularly prevalent (e.g. Hibbard et al. 2001a,b). These observations of ongoing tidal interactions suggest that galaxies can undergo significant morphological evolution in the group environment, possibly playing a major role in the morphology–density relation (e.g. Postman & Geller 1984; Bekki & Couch 2011; Hess & Wilcots 2013).

H I observations can give direct evidence to the fundamental role of group processing in galaxy evolution, tracing the recent interaction history of group galaxies (e.g. Yun, Ho & Lo 1994). However, while the inner interactions of merging galaxies have been observed in detail (e.g. Rand 1994), H I studies covering the full extent of interactions in groups are difficult to execute due to the need for high sensitivity over wide fields; wide field H I surveys

have been limited in resolution and sensitivity, and interferometric studies have been limited to the field of their primary beam.

Still, H I mapping on the group scale is important for understanding the ubiquity of these interactions, the fraction of gas involved, and the interaction time-scales (e.g. Serra et al. 2015), which in turn constrain the impact of tidal processing in groups on galactic evolution, relative to other processes, like the decrease in cold gas accretion (Sancisi et al. 2008).

The Arecibo Legacy Fast ALFA (Arecibo L-band Feed Array) survey (ALFALFA; Giovanelli et al. 2005) provides high sensitivity, unbiased, wide field maps of H I in the local volume, and has traced the atomic gas distribution in a variety of local groups (Stierwalt et al. 2009; Lee-Waddell et al. 2012, 2014).

Here we present the ALFALFA data on a well-studied loose group in the Leo Cloud, known to show significant evidence of interaction. The ALFALFA data are not limited to an arbitrary region on the sky, allowing us to search for additional structures and constrain the cold gas fraction outside stellar discs over the full ~ 9 Mpc² physical region. These data reveal substantial intragroup cold gas, demonstrating the power of sensitive, wide field H I mapping.

* E-mail: leisman@astro.cornell.edu

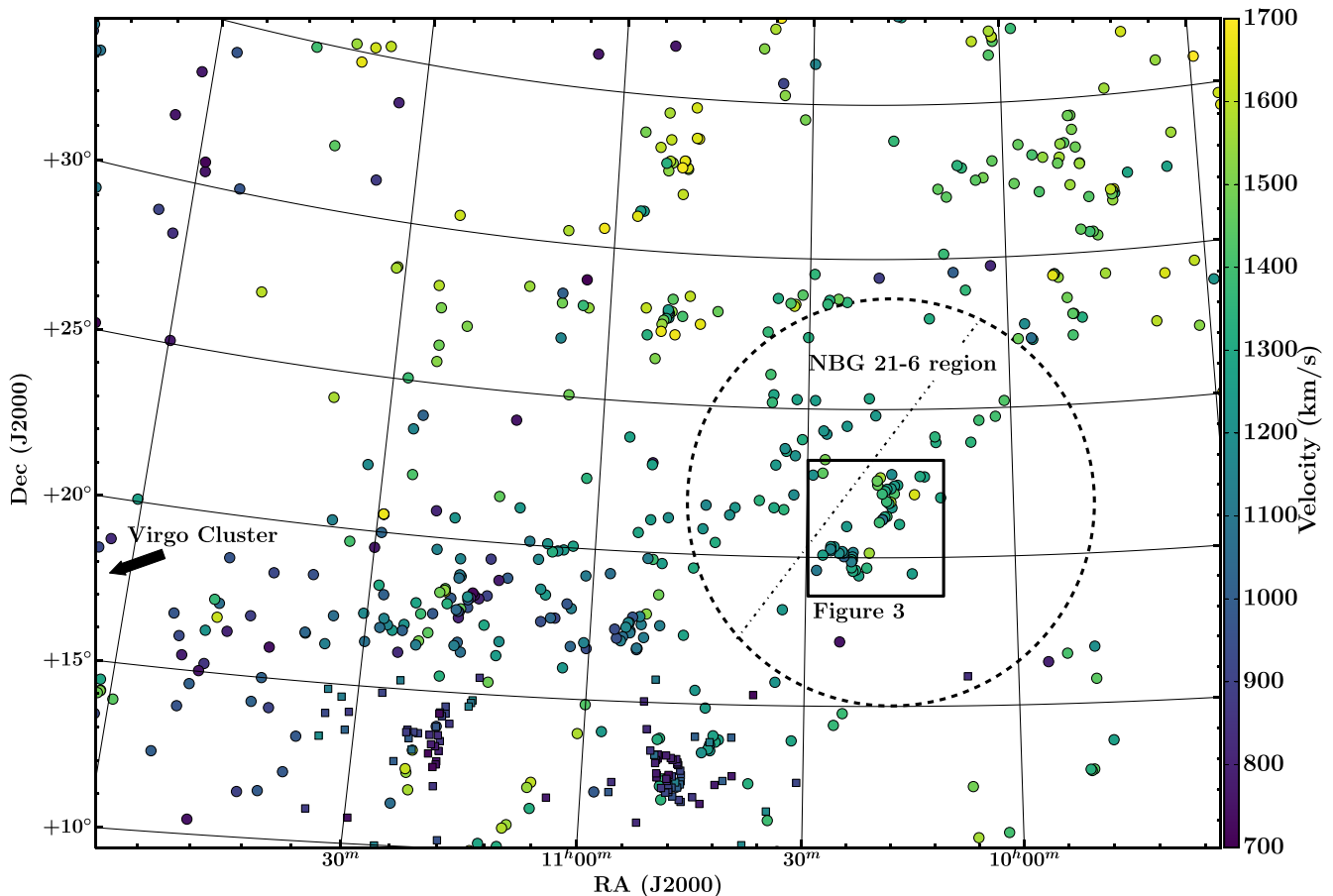


Figure 1. The distribution of galaxies in the NBG 21-6 region within the context of the Leo Cloud, a sparsely populated filament at $D \sim 20\text{--}30$ Mpc stretching from the lower left of the image (near the Virgo Cluster) to the upper right. Sources are colour coded by heliocentric recessional velocity, and show some gradient from high to low velocities as the filament approaches the Virgo Cluster. The dashed circle has a radius of 3 Mpc at a distance of 25 Mpc, and shows the location of the NBG 21-6 region that is the primary focus of this study. Some group catalogues divide the sources in the NBG 21-6 region into two subgroups, as indicated by the dashed-dotted line. The central/south-west region (below the dashed-dotted line) itself has two main concentrations, the NGC 3227 and NGC 3190 groups (Fig. 3), which contain the large H I structures discussed in Section 4. Members of the foreground Leo Spur ($D \sim 10$ Mpc), as identified by Stierwalt et al. (2009), are indicated by squares rather than circles.

We summarize prior work on this group in Section 2 and present our observations in Section 3. We present our results in Section 4, discuss the group context in Section 5 and conclude in Section 6. For all calculations, the assumed cosmology is $H_0 = 70 \text{ km s}^{-1} \text{ Mpc}^{-1}$, $\Omega_m = 0.3$, and $\Omega_\Lambda = 0.7$.

2 PLACEMENT IN THE COSMIC WEB

2.1 The NBG 21-6 region

Fig. 1¹ shows the distribution of galaxies in the constellation Leo, between heliocentric recessional velocities of $v_h = 700$ and 1700 km s^{-1} . The primary structure in this velocity range is the Leo Cloud,² a loose collection of groups stretching $\sim 50^\circ$ across the

plane of the sky at a distance of $\sim 20\text{--}30$ Mpc, from the edge of the Virgo Cluster around $12^{\text{h}}, +15^\circ$ (the lower left-hand corner of Fig. 1) to around $9^{\text{h}}30^{\text{m}}, +35^\circ$ (the upper right-hand corner of Fig. 1) to around $9^{\text{h}}30^{\text{m}}, +35^\circ$ (the upper right-hand corner of Fig. 1). A region of particular interest for H I studies (see Section 2.3) is a loose association of galaxies spanning ~ 6 Mpc in the north-west (NW) part of the Leo Cloud (indicated with a dashed circle in Fig. 1). Fig. 2 shows the velocity distribution of H I sources in this region, which is approximately Gaussian, with an average heliocentric recessional velocity of 1304 km s^{-1} , and a dispersion of $\sigma \sim 115 \text{ km s}^{-1}$, in contrast with the more uniform distribution of the Leo Cloud at large.

Yet, the group relationships of galaxies in this region are unclear. Several studies assign the galaxies in this region to a single group (e.g. Huchra & Geller 1982; Garcia 1993), which we will refer to as NBG 21-6 following the nomenclature of the Nearby Galaxies Catalog (Tully 1987). However, depending on the length scale chosen to link the galaxies, other authors have divided this region into

¹ Data are taken from the Arecibo General Catalog (AGC), a private data base maintained over the years by MPH and RG; it contains all bright galaxies and ones of known redshift as available in NED with $cz < 18000 \text{ km s}^{-1}$ in the ALFALFA volume, additional unpublished H I results as they are acquired, and bright galaxies in other regions of the sky.

² Analysis of the Leo Cloud is complicated by the superposition of the foreground Leo Spur at ~ 10 Mpc, which is poorly discriminated in velocity

space due to infall towards the Virgo Cluster (e.g. Tully 1987; Karachentsev et al. 2015b). ALFALFA results for the southern part of the Leo Cloud were presented in Stierwalt et al. (2009), but the coverage there only extended to $\delta < 16^\circ$.

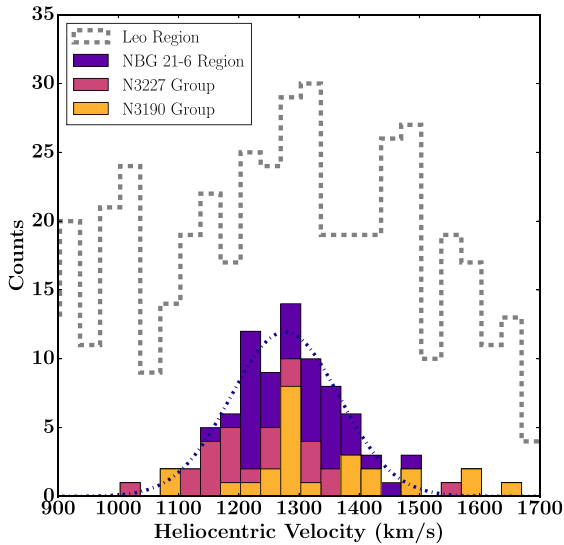


Figure 2. Histogram of heliocentric recessional velocities in the Leo Region. The filled purple bars indicate the counts for the NBG 21-6 region (dashed circle in Fig. 1), which shows a roughly Gaussian distribution (the best-fitting Gaussian with $\sigma \sim 115 \text{ km s}^{-1}$ is overplotted as a dash-dotted line), in contrast with the source distribution for all sources in Fig. 1, indicated here by the dashed grey line. Sources in the NGC 3190 (yellow) and NGC 3227 (pink) groups are subsets of the NBG 21-6 distribution.

two subgroups (e.g. Turner & Gott 1976; Geller & Huchra 1983), as indicated by the dash-dotted line in Fig. 1, and still others further divide the south-west (SW) subgroup (pictured in Fig. 3) into the NGC 3227 group, and the NGC 3190 group (e.g. Makarov & Karachentsev 2011).

Fig. 2 also shows the velocity distributions of the component NGC 3190 and NGC 3227 groups, which have mean recessional velocities (dispersions) of 1220 (99) and 1353 (150) km s^{-1} respectively, in contrast with the distribution for the full NBG 21-6 region. Groups were assigned by selecting all sources within the boxed regions in Fig. 3 (described in Section 4) within the stated velocity range. Tables 1 and 2 list the basic properties of the galaxies assigned to each group by this simplistic method [sources assigned to different groups by a more sophisticated algorithm (Makarov & Karachentsev 2011) are noted with a star]. Both the shape and narrowness of the velocity distribution suggest a relationship between the sources in the NBG 21-6, even while the precise nature of that relationship is uncertain.

2.2 Distances in the NBG 21-6 region

Distance determinations to member galaxies compound the problem of group membership. Standard Hubble flow would give distances between 15 and 22 Mpc, but the entire region is falling into Virgo at $\sim 200 \text{ km s}^{-1}$ (Karachentsev, Nasonova & Karachentseva 2015a), and individual galaxies are falling into the local filament and groups (see Section 5.3). More, redshift-independent distance measurements for this group are both complicated and confusing. There are three sources with measured primary distances: NGC 3226 (23.6 Mpc) and NGC 3193 (34 Mpc) via surface brightness fluctuations (Tonry et al. 2001) and NGC 3190 which contains two Type Ia supernovae that give distance estimates ranging from 18 (Amanullah et al. 2010) to 31 Mpc (Szabó et al. 2003) depending on calibration. However, given the strong interactions in

this region, the primary distances to each of these objects may be strongly effected by systematic errors (see Serra et al. 2013 for a brief discussion). Other redshift-independent distances are little help, as estimates based on scaling relations are complicated by interactions; for example, estimates of distances to the merging pair NGC 3226/NGC 3227 range from 14.5 (Yoshii et al. 2014) to 43.5 Mpc (Blakeslee et al. 2001).

Thus, observations that bridge the gap between individual galaxies and the group structure are important for disentangling the complex relationships in this region. In Section 5 we argue that the sources in this region are gravitationally interacting, and likely to be at a similar distance. Using the corrections given in the NASA Extragalactic Database, based on the local velocity field model from Mould et al. (2000), we estimate a distance of 24.3 Mpc from the average velocity of the NBG 21-6 group. We thus choose to follow Serra et al. (2013) and assume a distance of 25 Mpc for all galaxies in the region for the remainder of this paper. We further defend this choice in Section 5.3.

2.3 Interactions in the NBG 21-6 region

Previous studies have found significant evidence of interactions between group members in the NBG 21-6 region. The NGC 3190 group centres around Hickson Compact Group 44 (HCG 44), a compact group of four galaxies of similar optical brightness. Several studies have found that the galaxies in HCG 44 appear to be H I deficient (see Section 5.1), and NGC 3187 and NGC 3190 show strong morphological evidence of tidal interactions. Moreover, Serra et al. (2013) report the discovery of a large $\sim 300 \text{ kpc}$ H I tail extending to the north and west of the group.

Similarly, Mundell et al. (1995) found two tails stretching 7 arcmin north and 16 arcmin south (51 and 116 kpc at $D = 25 \text{ Mpc}$) of the interacting pair NGC 3226 and NGC 3227 (also called Arp 94) in deep C and D array Very Large Array (VLA) imaging. Optical imaging shows a complex set of faint stellar filaments, arcs, and loops, and Appleton et al. (2014) suggest a complex interaction history based on a plethora of multiwavelength data.

While previous observations have been sufficient to reveal the complex nature of both the NGC 3227 and NGC 3190 groups, they have been limited by the field of view of their observations. Here we present the first high sensitivity, complete H I maps of the entire region, corroborating and extending these results (see Sections 4.1 and 4.2 for the NGC 3227 and NGC 3190 subgroups respectively), and painting a global picture of H I in the region.

3 OBSERVATIONS AND DATA

3.1 H I data from the ALFALFA survey

The ALFALFA observations and data processing are described in detail in previous papers (Giovanelli et al. 2005; Saintonge 2007; Martin et al. 2009; Haynes et al. 2011). In brief, ALFALFA employs a two-pass, fixed azimuth drift scan strategy, with a bandwidth of 100 MHz and a spectral resolution of 24.4 kHz (5.3 km s^{-1} at $z = 0$) before Hanning smoothing. The data are bandpass subtracted, calibrated, and then flagged interactively for radio frequency interference (RFI). Once this ‘level 1’ processing is complete, the data are gridded into cubes 2:4 on a side and spanning the full spectral bandwidth from -2000 to $18\,000 \text{ km s}^{-1}$ (though the cubes are split into four subcubes of 1024 spectral channels each for easy processing). Each cube was flat-fielded and rebaselined, and corrected for residual telescope pointing errors. Sources are

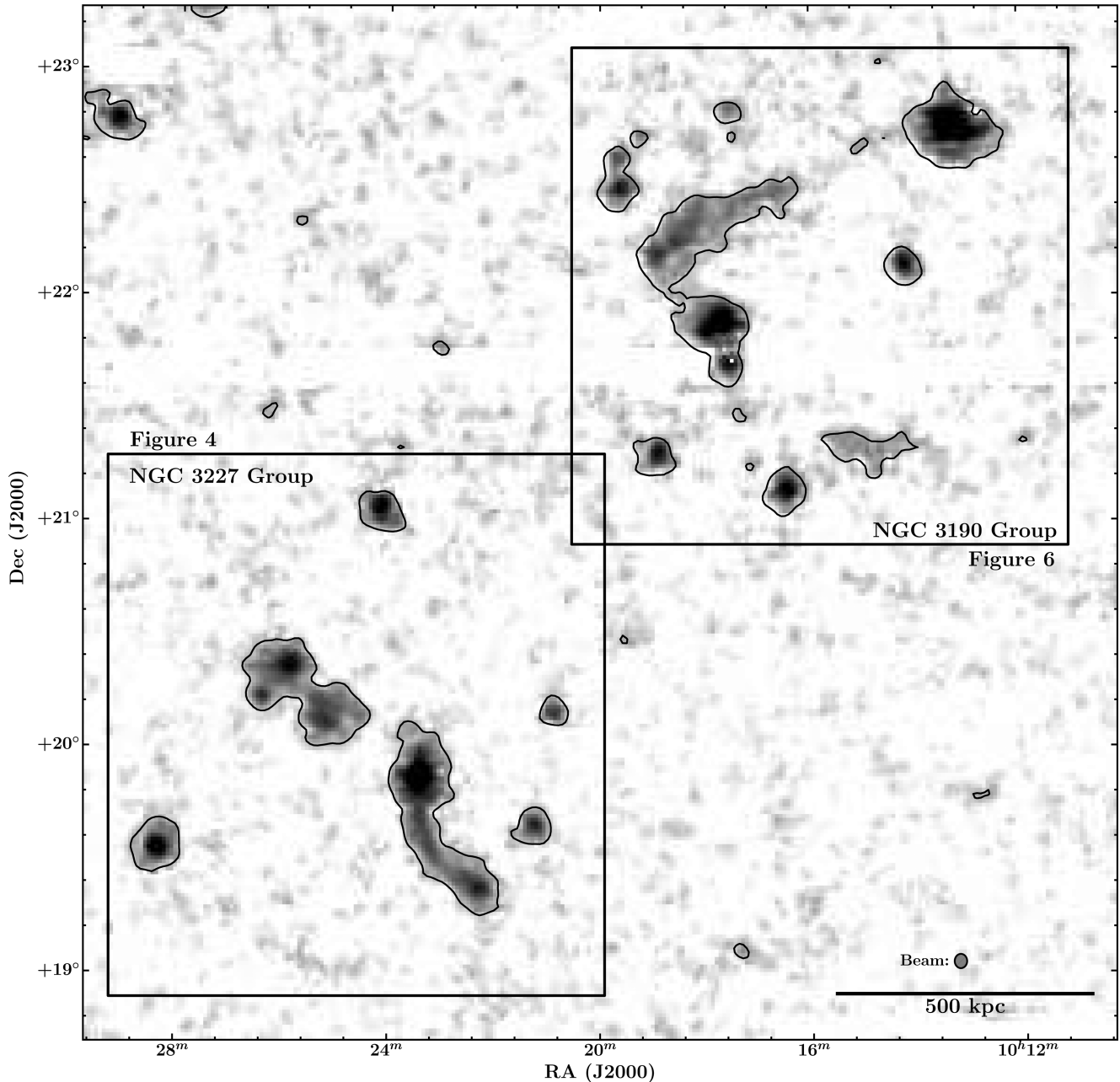


Figure 3. $\sim 2 \times 2$ Mpc ALFALFA H I moment 0 map of the region containing the NGC 3190 and NGC 3227 groups, from 911 to 1722 km s^{-1} , with boxes indicating the approximate locations of the two groups, and black contours denoting emission 4σ above the average rms noise of the image. This map reveals that the H I features in the groups approach the scale of the group. The extent of the features was previously undetected in WSRT and VLA synthesis observations because of their lower sensitivity, and restriction to a ~ 0.5 primary beam. A few strips with no emission (especially around $\delta \sim 21^{\text{d}} + 38^{\text{m}}$) have been heavily masked due to significant RFI.

extracted using the methods of Saintonge (2007), and then each grid is examined by eye to improve on the automatic detection algorithm at lower signal-to-noise ratios (SNRs) and to identify optical counterparts in Sloan Digital Sky Survey (SDSS) and Digitized Sky Survey 2 (DSS2) images; final source parameters are measured and catalogued interactively. The public 70 per cent ALFALFA catalogue has $> 25\,000$ high SNR extragalactic detections (Jones et al. 2016).

Because of their large angular extent, the structures discussed in this paper were originally split across multiple cubes. Thus, to better study the region on physically relevant scales, the ALFALFA

data were regridded into a single 50 deg^2 cube centred at $10^{\text{h}}20^{\text{m}}, +21^{\circ}$. The moment 0 map of the central portion of this region is shown in Fig. 3. This map was created by first smoothing to two times the beam size and then masking pixels below 2.5σ . Actual telescope scheduling, gain differences between the ALFA beams, and significant flagging due to RFI resulted in uneven integration times and rms values across the cube. To correct for this we used a weights map of effective integration time after flagging to create an rms cube which allowed us to determine the appropriate threshold for masking. One strip in particular, $\delta \sim 21^{\text{d}}38^{\text{m}}$, was strongly affected by low level RFI and required additional masking. The mask

Table 1. Galaxies in the NGC 3227 group. Column (1): ID number from the Arecibo General Catalog; column (2): alternate name; column (3): RA and Dec. correspond to the optical centre of each galaxy, except for H I only features, where the coordinates give the position of the peak flux; column (4): heliocentric optical recessional velocity. For all sources detected in H I, the value is from the ALFALFA catalog, else the value is from the Arecibo General Catalog; column (5): H I line width from ALFALFA, measured at the 50 per cent flux level; note that AGC 5620 and HI_{North} are blended, so the fluxes contain addition systematic uncertainty; column (6): $\int S dV$ as measured in the ALFALFA data; column (7): $\int S dV$ as measured in synthesis data, corrected for primary beam attenuation; column (8): source of the synthesis measurement. Sources labelled L16 are from WSRT measurements presented in this paper, and those labelled M95 are VLA measurements from Mundell et al. (1995); column (9): H I masses assume a distance of 25 Mpc for all sources; column (10): fraction of group H I, $F_{\text{H I,galaxy}}/F_{\text{H I,group}}$, in per cent.

AGC	Name	Coordinates (J2000)	cz (km s^{-1})	W_{50} (km s^{-1})	$F_{\text{H I,ALFA}}$ (Jy km s^{-1})	$F_{\text{H I,SYN}}$ (Jy km s^{-1})	Source	$\log M_{\text{H I}}$ (M_{\odot})	$f_{\text{H I}}$ (per cent)
(1)	(2)	(3)	(4)	(5)	(6)	(7)	(8)	(9)	(10)
5590 ^a	NGC 3213	10:21:17.4, +19:39:04	1347 ± 1	134 ± 2	1.62 ± 0.06			8.38	3.2
5620	NGC 3227	10:23:30.5, +19:51:53	1126 ± 2	412 ± 3	17.52 ± 0.10	14.5	M95	9.41	35.0
5629 ^a		10:24:12.9, +21:03:01	1238 ± 1	113 ± 2	3.58 ± 0.06			8.72	7.2
5653	I610	10:26:28.3, +20:13:42	1168 ± 2	296 ± 4	1.64 ± 0.06			8.38	3.3
5675	M+327047	10:28:30.0, +19:33:46	1106 ± 1	83 ± 2	4.55 ± 0.06			8.83	9.1
202045 ^b	D568-04	10:20:56.1, +20:09:21	1557 ± 2	73 ± 4	1.31 ± 0.04			8.29	2.6
HI _{NE}		10:25:37.4, +20:20:34	1210 ± 2	57 ± 4	10.18 ± 0.21	9.61 ± 0.39	L16	9.18	20.3
HI _{North}		10:23:25.7, +20:00:01	1305 ± 33	134 ± 16	2.88 ± 0.16	3.3	M95	8.63	5.8
HI _{South}		10:22:50.5, +19:27:48	1292 ± 5	49 ± 5	6.77 ± 0.21	5.12 ± 0.2	L16	9.00	13.5
NGC 3227 group total								9.87	1.0
5617	NGC 3226	10:23:27.0, +19:53:54	1275
718673		10:23:15.4, +20:10:40	1151
718681		10:23:21.6, +20:01:38	1166
718719		10:24:34.7, +20:01:57	1028
718778		10:26:31.0, +20:16:60	1163
739353		10:23:22.4, +19:54:51	1338
739467		10:27:37.5, +20:04:43	1268

^aClassified as a member of the NGC 3190 group by Makarov & Karachentsev (2011).

^bClassified as a background source by Makarov & Karachentsev (2011).

Note. Sources in the lower part of the table are not detected at the ALFALFA sensitivity limit, which is a function of W_{50} and the rms at the position of the source (see equation 2 in Haynes et al. 2011). For a 50 km s^{-1} wide source, the average 4σ ALFALFA flux upper limit is 0.3 Jy km s^{-1} , which translates into a fractional limit of <0.6 per cent of the total group mass for each undetected source.

was then applied to the unsmoothed cube, which was then summed over velocity channels from 911 to 1722 km s^{-1} , encompassing the full velocity range of the sources in the group.

Total H I fluxes for all sources in the region were extracted manually using the standard ALFALFA software (see Haynes et al. 2011). However, the ALFALFA algorithm is optimized for point sources rather than highly extended and asymmetric sources like the features discussed below. Thus, all sources were remeasured by a modified version of the software which spatially integrates the spectrum over any arbitrary shaped area, and then divides by the summed value of the normalized beam over the same set of image pixels (e.g. Shostak & Allen 1980). This method gives consistent measurements with the standard software on point sources, and recovers up to ~20 per cent more flux for the extended sources in this field.

3.2 H I synthesis imaging with WSRT

Three sources in the vicinity of NGC 3226/7 were included in an exploratory sample of synthesis observations studying extreme H I sources without optical counterparts in ALFALFA (see Cannon et al. 2015; Janowiecki et al. 2015 for more details). The connection to NGC 3226/7 was noted, but the nature of the dark H I knots, given their large separations from the merging pair, was unclear.

We observed these three sources with 4×12 h pointings with Westerbork Synthesis Radio Telescope (WSRT), two centred at $10^{\text{h}}25^{\text{m}}21^{\text{s}}.0, +20^{\circ}10'05''$, one centred at $10^{\text{h}}22^{\text{m}}26^{\text{s}}.2, +19^{\circ}23'17''$, and one at $10^{\text{h}}25^{\text{m}}55^{\text{s}}.0, +20^{\circ}20'33''$. The primary beams of the three

pointing centres are 35 arcmin wide. We centred observations on the H I line in one band of 10 MHz bandwidth and 1024 channels in two polarizations. This resulted in a broad range of line free channels for continuum subtraction and a velocity resolution of 4.1 km s^{-1} [full width at half-maximum (FWHM)] after Hanning smoothing.

We reduced the data using the same automated pipeline as applied in Wang et al. (2013), originally used by Serra et al. (2012), as described in Janowiecki et al. (2015). The pipeline uses the data reduction software MIRIAD (Sault, Teuben & Wright 1995) wrapped into a PYTHON script. In brief, the pipeline automatically flags the data for RFI using a clipping method after filtering the data in both the frequency and time domain. After primary bandpass calibration, it iteratively deconvolves the data with the CLEAN algorithm in order to apply a self-calibration, using CLEAN masks determined on the cube with decreasing clip levels. We then subtract the continuum in the visibility domain and apply the calibration solution to the visibilities to then invert the data after Hanning smoothing. We then iteratively clean the data cubes down to the rms noise in the cubes, using CLEAN masks determined by filtering the data cubes with Gaussian kernels and applying a clip level. We used a Robust weighting of $r = 0.4$, and binned the data to a velocity resolution of 12.3 km s^{-1} (FWHM); 6.0 km s^{-1} channels) after Hanning smoothing.

For each cube we then created H I total flux maps by smoothing the images to two times the beam size, masking any pixel below 3σ , applying the mask to the unsmoothed cubes, and then summing along the velocity axis. We calculate H I column densities assuming optically thin H I gas that fills the WSRT beam, and also produce

Table 2. Galaxies in the NGC 3190 group. Column definitions are the same as Table 1. Note that, as in Table 1, distance-dependent parameters are calculated using a distance of 25 Mpc for all sources. Measurements labelled S13 are WSRT measurements from Serra et al. (2013). Note that AGC 5556 and AGC 5559 are blended in the ALFALFA data. For a 50 km s⁻¹ wide source, the average 4 σ ALFALFA flux upper limit of 0.3 Jy km s⁻¹, translates into a fractional limit of <0.4 per cent of the total group mass for each undetected source.

AGC	Name	Coordinates (J2000)	cz (km s ⁻¹)	W_{50} (km s ⁻¹)	$F_{\text{HI,ALFA}}$ (Jy km s ⁻¹)	$F_{\text{HI,SYN}}$ (Jy km s ⁻¹)	Source	$\log M_{\text{HI}}$ (M _⊙)	f_{HI} (per cent)
(1)	(2)	(3)	(4)	(5)	(6)	(7)	(8)	(9)	(10)
5510	NGC 3162	10:13:31.6, +22:44:13	1302 ± 1	177 ± 2	30.48 ± 0.08			9.65	40.0
5524	123-027	10:14:21.8, +22:07:28	1636 ± 1	180 ± 2	2.73 ± 0.07			8.60	3.6
5544	NGC 3177	10:16:34.0, +21:07:23	1310 ± 2	181 ± 4	3.76 ± 0.07	2.11	S13	8.74	4.9
5554	NGC 3185	10:17:38.6, +21:41:16	1230 ± 1	253 ± 2	3.58 ± 0.08			8.72	4.7
5556	NGC 3187	10:17:47.9, +21:52:23	1586 ± 2	219 ± 4	11.19 ± 0.09	8.22	S13	9.22	14.7
5559	N3189/90 ^c	10:18:05.5, +21:49:51	1310 ± 4	463 ± 7	4.53 ± 0.12	4.0	S13	8.82	5.9
5574	M+425001	10:19:43.0, +22:27:06	1462 ± 5	130 ± 10	2.30 ± 0.08			8.53	3.0
5575		10:19:46.9, +22:35:39	1471 ± 3	123 ± 5	1.28 ± 0.07	0.84	S13	8.28	1.7
200162	123-024	10:12:52.5, +22:43:21	1285 ± 11	128 ± 23	1.48 ± 0.07			8.34	1.9
200255 ^a	124-001	10:19:01.5, +21:17:01	1083 ± 3	50 ± 6	2.65 ± 0.06			8.59	3.5
201052 ^b		10:17:23.3, +21:47:58	1943 ± 1	42 ± 3	2.38 ± 0.06	1.03	S13	8.55	3.1
201174	F500-4	10:19:19.2, +22:42:05	1573 ± 3	51 ± 6	0.57 ± 0.06			7.92	0.7
201337	123-035	10:17:39.5, +22:48:35	1178 ± 3	183 ± 7	1.20 ± 0.08			8.25	1.6
202134	Wa5	10:10:32.8, +22:00:40	1280 ± 12	79 ± 25	0.37 ± 0.06			7.74	0.5
HI _{Main}	T _N	10:18:05.4, +22:31:27	1302 ± 5	115 ± 3	7.66 ± 0.43	2.79	S13	9.05	10.1
NGC 3190 group total								10.05	1.0
5562	NGC 3193	10:18:24.9, +21:53:36	1378
208748	124-001b	10:19:00.8, +21:16:55	1085
208761		10:19:28.6, +21:11:24	1381
718513		10:17:17.6, +22:09:39	1423
718530		10:18:22.8, +21:23:31	1408
718531		10:18:40.9, +21:22:49	1289

^aClassified as a member of the NGC 3227 group by Makarov & Karachentsev (2011).

^bClassified as a background source by Makarov & Karachentsev (2011).

^cNGC 3190 is referred to as NGC 3189 in some papers. According to Serra et al. (2013), NGC 3189 is the south-east component of NGC 3190.

H I moment 1 velocity maps from cubes masked at 3σ . We measure the H I flux by applying a mask based on the smoothed moment 0 map to cubes corrected for primary beam attenuation, and then extracting and fitting 1D spatially integrated H I profiles. These fluxes are reported in Table 1.

4 RESULTS

Fig. 3 shows the ALFALFA moment 0 map of the central ~ 20 deg² of the regridded cube. At 25 Mpc, this image covers $\sim 2 \times 2$ Mpc on the sky. The NGC 3227 and NGC 3190 groups are visible to the south-east and north-west of the centre of the image, and are shown in greater detail in Figs 4 and 6, respectively. The H I plumes associated with NGC 3227 and the large feature in the NGC 3190 group extend to similar scales as the groups themselves. Indeed, Makarov & Karachentsev (2011) estimate the harmonic radii of the NGC 3227 and NGC 3190 groups to be 125 and 276 kpc, respectively (at $D = 25$ Mpc), significantly less than the projected length of the structures discussed below. The large extent of these H I features is the main result of this paper. Here we describe the properties and extent of the features in the NGC 3227 and NGC 3190 groups in Sections 4.1 and 4.2, and then discuss the mass of cold intragroup gas in Section 4.3.

4.1 Extended tails in the NGC 3227 group

Fig. 4 shows the ALFALFA data for the NGC 3227 group, overlaid on an SDSS r -band image created with MONTAGE. The bottom

and side panels show RA–velocity and Dec.–velocity views of the group, with black vertical and horizontal bars indicate the ALFALFA velocity width at the 50 per cent flux level for detected galaxies. A dashed thick black circle indicates the region imaged by Mundell et al. (1995), who report the detection of two H I plumes (labelled HI_{North} and HI_{South} in Fig. 4) extending 51 and 116 kpc to the north and south of NGC 3227 in the centre of the NGC 3227 group. However, the primary beam of the VLA at 1420 MHz (the effective field of view of the interferometer) is only ~ 35 arcmin. Thus, while, the ALFALFA data confirm the plumes detected in the high-resolution VLA maps, they find that the plumes extend far beyond the VLA primary beam to ~ 10 and ~ 40 arcmin (73 and 291 kpc at 25 Mpc). They also reveal the presence of a previously unreported feature stretching 0.9 to the north-east (NE; labelled HI_{NE} in Fig. 4), distinct from the other plumes.

All three H I appendages appear to have no detectable stellar counterparts at the surface brightness limit of SDSS (~ 25 mag arcsec⁻²); optically detected galaxies of known redshift (i.e. of $m_g < 17.7$) are indicated with open diamonds, colour coded by their velocity to match the scale in Fig. 1. While there are several reasonably bright optical sources in this region, none of them is clearly associated with the H I features.

4.1.1 The southern H I plume (HI_{South})

The H I plume extending to the south of NGC 3227 shows excellent agreement with the Mundell et al. (1995) maps within the region imaged by the VLA. Both data sets show that the plume (which

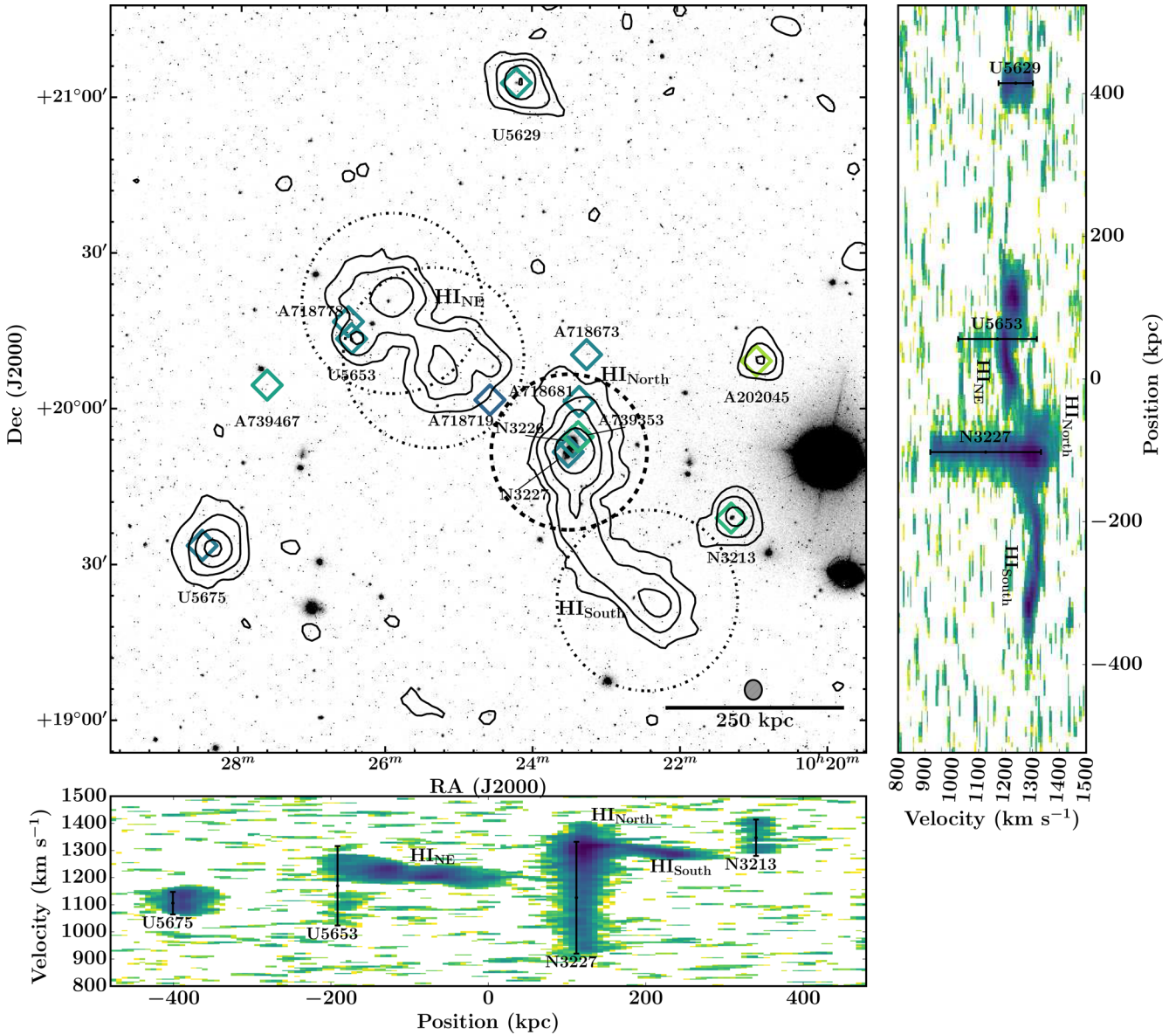


Figure 4. ALFALFA moment 0 contours (summed over 900–1500 km s⁻¹) overlaid on a SDSS *r*-band optical image of the NGC 3227 group, demonstrating the large extent of the H I features relative to the optical emission from the merging pair NGC 3226/7 (near the centre of the image). Contour levels are spaced logarithmically at 1.2, 2.4, 4.8, 9.6, and 19.2 × 10¹⁸ atoms cm⁻² (assuming the H I uniformly fills the ALFA beam of 3.3 × 3.8 arcmin²). The lowest contour level is 4σ above the rms noise. The thick dashed circle indicates the region mapped in higher resolution VLA imaging by Mundell et al. (1995), showing the need for wide field mapping for a full understanding of this system. The thinner dash-dotted circles show the field of view of the WSRT observations shown in Fig. 5. Optical galaxies with known redshifts between 700 and 1700 km s⁻¹ are marked with open diamonds, coloured by their recessional velocity to match the colour scale from Fig. 1. Catalogue designations AGC, UGC, and NGC are abbreviated by their first initial. The ALFA beam is represented by a hashed circle in the lower right. Right and bottom: ALFALFA position–velocity diagram summing the H I emission across the image from 10:27:30 to 10:21:45 in RA and from 19:00:00 to 20:40:00 in Dec., respectively (the ranges are selected to minimize confusion and highlight the H I plumes in the diagrams). Black vertical and horizontal bars indicate the ALFALFA velocity width at the 50 per cent flux level for detected galaxies in the region. The diagrams show the coherence of the plumes in velocity space, and the separation in velocity of HI_{NE} at ∼1200 km s⁻¹ and HI_{North} at ∼1400 km s⁻¹.

we will refer to as HI_{South}) rises steeply in velocity from ∼1200 to ∼1300 km s⁻¹ moving south away from NGC 3227. However, the feature extends ∼28 arcmin beyond the region covered by the VLA, continuing to rise in velocity, and decrease in projected column density. ∼17 arcmin from NGC3226/7, it bends west and begins to decrease in velocity from ∼1320 to ∼1270 km s⁻¹. As shown in the PV panels in Fig. 4, the end of the plume shows a marked increase in projected column density, and the velocity dispersion of the tail appears to decrease significantly moving south from

NGC 3227. However, the significantly higher resolution WSRT observations of the end of the plume, shown in panels (c) and (d) of Fig. 5, show a messy, extended distribution, inconsistent with any suggestion of a ‘dark’ or tidal dwarf galaxy (TDG). Indeed, the higher column density emission traces the ALFALFA data well, and has clear elongated, tail-like morphology. The column density peaks at 2.3 × 10²⁰ atoms cm⁻² (for a beam of 14 × 47 arcsec²), but there is no associated stellar emission at the detection limits of SDSS. There is a low surface brightness galaxy at 10^h22^m53^s.2, +19°34′36″

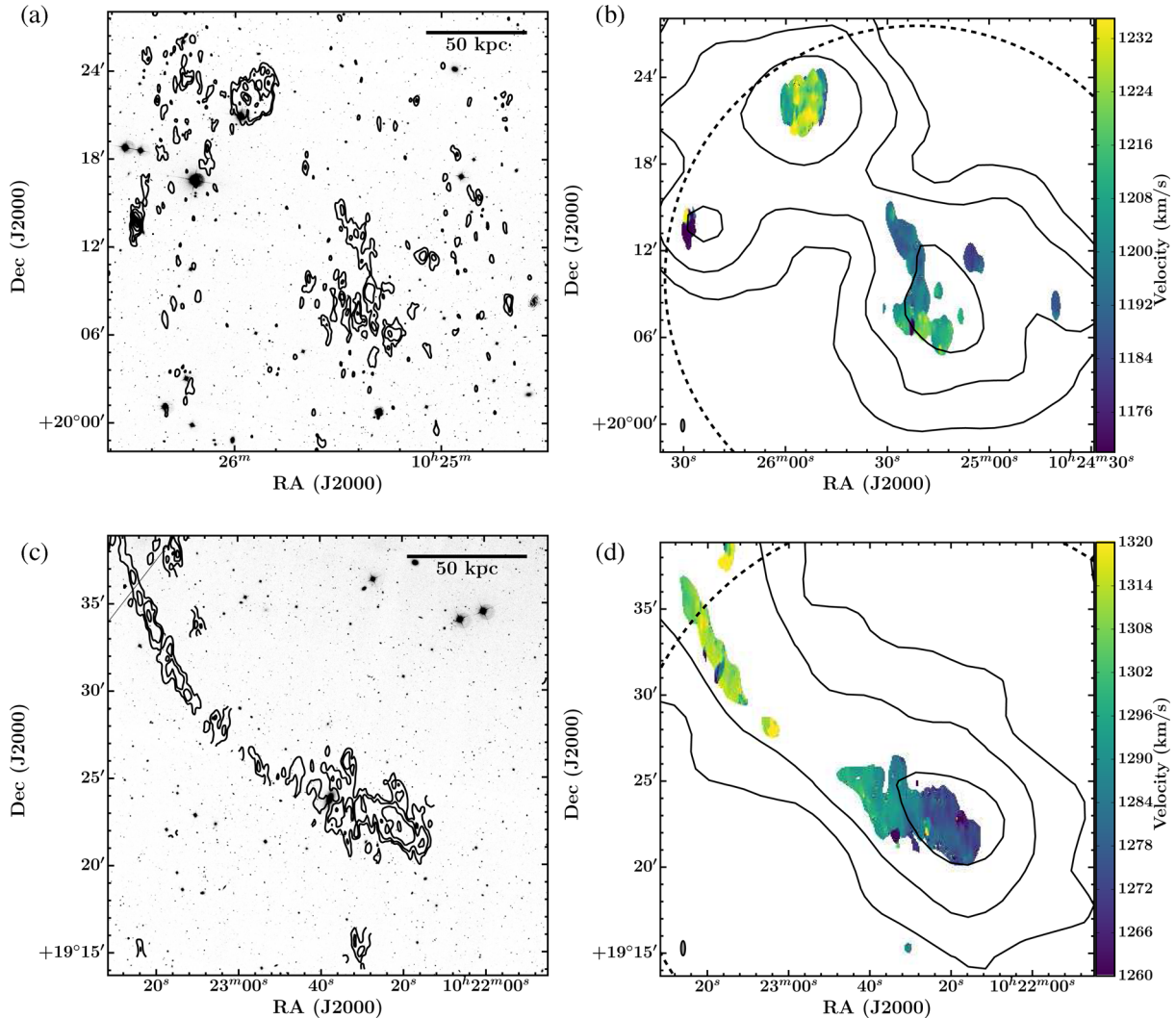


Figure 5. Left: high-resolution WSRT synthesis imaging of the ends of the north-eastern (HI_{NE}) and southern (HI_{South}) H I features associated with NGC 3227, showing messy, apparently tidal morphology in the higher column density gas. Panels (a) and (c) show WSRT H I column density contours at 3.5, 7, 14, 28, and 56×10^{19} atoms cm^{-2} (assuming the H I uniformly fills the beam of 14×47 arcsec 2) of HI_{NE} and HI_{South} , respectively, overlaid on *g*-band images from SDSS created with MONTAGE. Panels (b) and (d) show WSRT moment 1 maps of HI_{NE} and HI_{South} , respectively, with ALFALFA flux density contours from Fig. 4 overlaid in black. The WSRT observations match well with the lower resolution ALFALFA observations, and both features show coherent velocity structure. The FWHM of the WSRT primary beam is indicated by black dashed circles; significant primary beam corrections are necessary to estimate the flux of the entire features. The WSRT beam is indicated by a small grey circle in the lower left-hand corner of panels (b) and (d).

without a measured redshift, but there is no associated H I in the higher resolution WSRT images. The bright elliptical galaxy at $10^{\text{h}}22^{\text{m}}37^{\text{s}}.7$, $+19^{\circ}23'49''$ has a measured redshift of $11\,792$ km s^{-1} .

We note that NGC 3213 is ~ 22 arcmin (~ 160 kpc) from the end of HI_{South} , has a similar recessional velocity (see the RA–velocity plot in Fig. 4), and appears to show some extended H I emission at low SNR; however, our data do not have the sensitivity to determine if it is related to this southern plume. Thus, the H I distribution mapped here is consistent with the properties of a tidal tail associated with the merging pair NGC 3226/7, but we cannot completely rule out the rather unlikely possibility that HI_{South} is instead an H I bridge.

4.1.2 The northern H I plume (HI_{North})

The northern plume reported in Mundell et al. (1995) also is consistent with the ALFALFA data, but is blended with the emission from the TDG identified in Mundell et al. (2004) and NGC 3227, in

Fig. 4. While it appears to spatially connect with the north-eastern feature (HI_{NE} , discussed below), the two tails are well separated in velocity space, as demonstrated in the PV diagrams in Fig. 4. The northern structure increases in velocity from 1300 to 1400 km s^{-1} , as one moves away from NGC 3226/7 to a projected linear separation of 15 arcmin (compared with HI_{NE} (Section 4.1.3), which approaches NGC 3226/7 at a recessional velocity of 1240 km s^{-1}).

Appleton et al. (2014) use *Spitzer* Infrared Array Camera (IRAC) observations together with the VLA H I data to connect this northern structure to the elliptical galaxy NGC 3226, suggesting that the gas is infalling on to NGC 3226. We note that it shows a significantly wider velocity dispersion (~ 50 km s^{-1}), and steeper velocity gradient than HI_{South} , and that there are suggestions of significant substructure at lower SNR. There are two blue, fuzzy galaxies of moderate magnitude (AGC 718681 with $M_r = -17.3$ and AGC 718673 with $M_r = -16.1$ at 25 Mpc) that fall within this plume’s H I contours, but both objects have recessional velocities that fall below that of

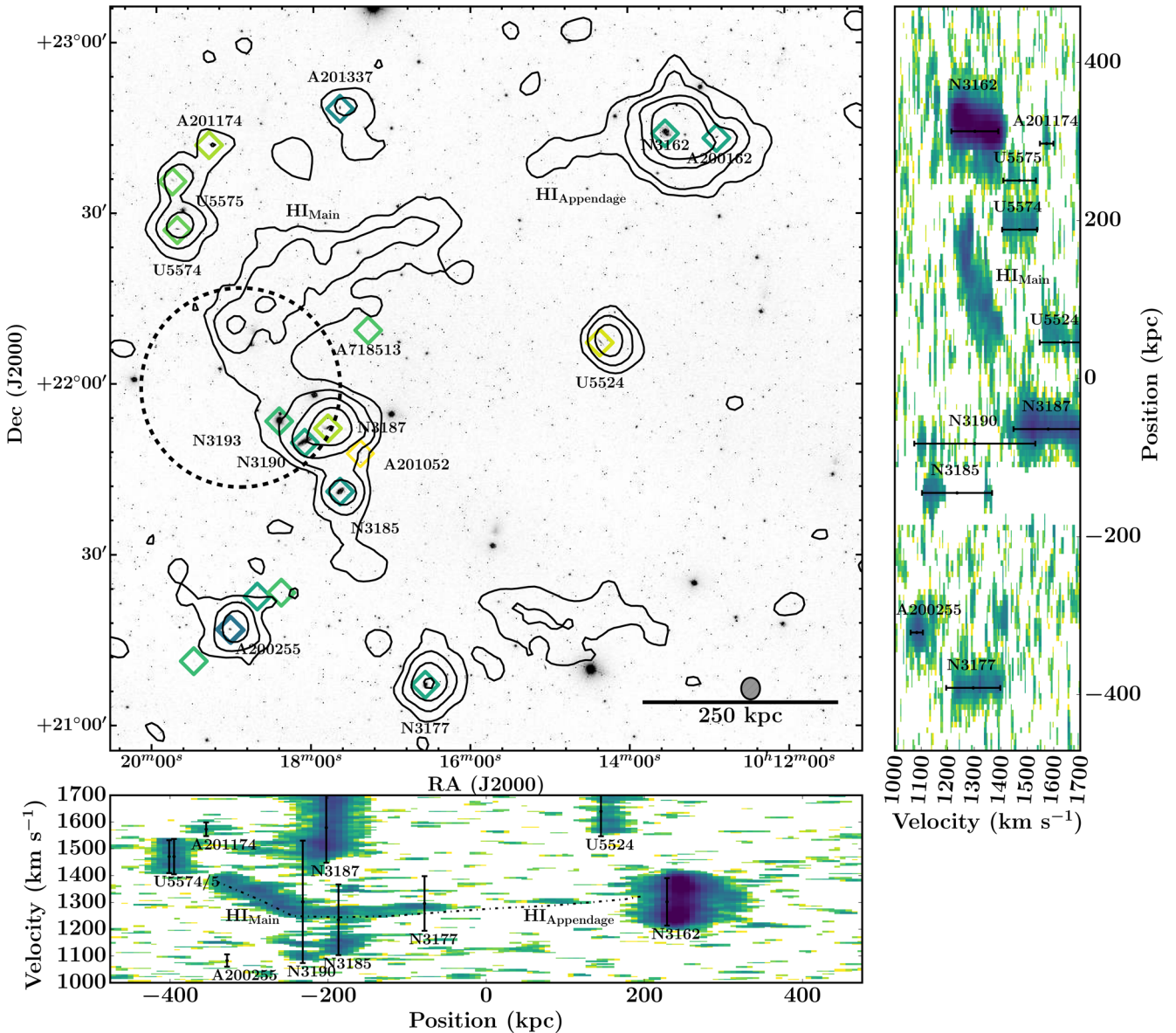


Figure 6. ALFALFA imaging of the central region of the NGC 3190 subgroup overlaid on an SDSS *r*-band optical image, showing the extended dark feature to the north of HCG 44, and the likely connection to NGC 3162. Optical galaxies with measured redshifts are indicated by open diamonds as in Fig. 4. The ALFALFA moment 0 contour levels are spaced logarithmically at 2, 6, 18, and 54×10^{18} atoms cm^{-2} (assuming the H I uniformly fills the ALFA beam of 3.3×3.8 arcmin²). The lowest contour level is 4σ above the rms noise. The black dashed circle indicates the FWHM of the WSRT primary beam from Serra et al. (2013). Note that the entire northern tail appears optically dark at the detection limits of SDSS. Right and bottom: ALFALFA PV diagrams summing the H I emission across the image from $10^{\text{h}}12^{\text{m}}$ to $10^{\text{h}}20^{\text{m}}$ in RA and from $21^{\circ}30'$ to 23° in Dec., respectively (the ranges are selected to minimize confusion in the diagrams). Note that NGC 3185 is missing significant emission between $v \sim 1200$ and 1300 km s^{-1} due to RFI masking, so the entirety of the main H I tail is visible in the bottom PV diagram. The emission from HI_{Main} and HI_{Appendage} are underscored by a dashed dotted line, showing that they align well in both position and velocity.

the detected H I (1151 and 1166 km s^{-1} , respectively). The compact dwarf AGC 739353 near NGC 3226 has a recessional velocity of 1338 km s^{-1} , somewhat higher than HI_{North}. Further modelling will be necessary to confirm the origins of this feature (and if, in fact it is a tidal tail, a tidal bridge, or something else).

4.1.3 The north-eastern feature (HI_{NE})

Fig. 4 also shows a bright H I feature extending $0^{\circ}9'$ to the north-east of NGC 3226/7. The feature is somewhat more massive than HI_{South}, but has a clumpier gas distribution, higher velocity dispersion, and

more complicated velocity field. The nature of the feature's connection to NGC 3226/7 was not immediately clear, since it is not connected at the column density sensitivity of our data. However, emission detected at 2.5σ in at least three neighbouring beams leads away from NGC 3226/7 at around 1230 km s^{-1} (most easily seen in the PV diagrams), forming a smooth arc with the rest of the NE tail. This feature shows two primary projected density peaks in the ALFALFA data, one roughly associated with the velocity minimum, and the other near the end of the tail. The WSRT observations, shown in Fig. 5, resolve these peaks into several clumps, revealing complicated structure in the high column density emission. The SW

clump appears messy with two or more density peaks, and the velocity field suggests it may contain significant substructure. Some of the emission extends in the NE–SW direction, while the emission at higher velocity is elongated in the east–west (EW) direction. The NE structure appears as a single clump with a peak column density of $3.9 \times 10^{20} \text{ cm}^{-2}$ in the WSRT data (assuming the flux fills the $13 \times 41 \text{ arcsec}^2$ beam integrated over the width of the source), but does not appear to show coherent velocity structure.

The disordered morphology at high column density, and the smooth, correlated nature of the structures in the ALFALFA data point to a tidal connection between NGC3226/7 and this NE structure. However, detailed modelling will be required to understand the full history of this feature, which may be the product of several interactions within the group.

The entire structure shows no stellar emission in SDSS imaging. There are three optical galaxies with measured redshifts in the nearby vicinity. AGC 718719 is fairly small and blue, and appears in projection near NGC 3226/7. However, with a recessional velocity of 1028 km s^{-1} it appears to be unrelated to the details of the tail. AGC 718778 ($v_{\text{helio}} = 1163 \text{ km s}^{-1}$) is a low surface brightness dwarf located near the north-eastern end of the tail, and at a more similar velocity to the tail, but is still at a lower recessional velocity than the detected gas. UGC 5653 is an edge on spiral with a clear dust lane located in the vicinity, but to the south of HI_{NE}. While some of the emission from UGC 5653 is blended with HI_{NE}, its central recessional velocity is lower than bulk of the nearby emission from HI_{NE} (1170 km s^{-1} when separated from the other emission). It is possible that HI_{NE} is, in fact, a bridge between UGC 5653 and NGC 3227, however, the WSRT observations do not indicate a clear connection between the H I in UGC 5653 and HI_{NE}, and the geometry seems rather unfavourable. Further, without measured primary distances, velocity crowding from infall requires that these sources be interpreted with caution since there is a small chance that they are simply projected to a similar region of phase space. However, we do note that the six objects detected without any H I in this subgroup (besides NGC 3226; listed in the bottom of Table 1) are all in close proximity to HI_{NE} or HI_{North} discussed above, and have somewhat similar optical colours and morphologies. All other objects brighter than $m_g = 17.7$ have detected H I in ALFALFA.

The moment 0 map also reveals suggestive tidal features at low SNR extending to the south-west of the NE plume towards the low surface brightness dwarf galaxy UGC 5675. However, deeper observations would be necessary to put this low SNR suggestion on firmer footing. Understanding the origins of the three main features detected here will require detailed dynamical modelling.

4.2 Extended tails in the NGC 3190 group

Located approximately 1 Mpc to the NW of the NGC 3227 group, the NGC 3190 group is the other primary overdensity in the NBG 21-6 region. Like the NGC 3227 group, the NGC 3190 group is known to exhibit extended H I without apparent associated stellar emission. Specifically, using a deep $6 \times 12 \text{ h}$ pointing with WSRT, Serra et al. (2013) reported the detection of a large H I feature (which they refer to as the northern tail, T_N) near the centre of the group, extending $\sim 20 \text{ arcmin}$ (220 kpc) to the north-west of HCG 44, and optically dark down to $\mu_g = 28.5 \text{ mag arcsec}^{-2}$ [in deep Canada–France–Hawaii Telescope (CFHT) imaging]. They further note the detection of HIPASS emission beyond the edge of the WSRT primary beam, which might extend the tail to $\sim 300 \text{ kpc}$, and the detection of a small cloud (C_S) to the east of HCG 44 and the south of the main H I feature. They suggest that the large H I feature originated due

to tidal stripping, and suggest that it may have originated from an interaction between NGC 3190 and NGC 3187, or from an interaction between NGC 3162 and the members of the compact group during a close flyby.

Like in the NGC 3227 group, ALFALFA finds that this previously detected H I feature extends to the group scale, well beyond the region previously studied, and finds evidence of additional extended H I structures. Fig. 6 shows ALFALFA H I column density contours overlaid on a MONTAGE SDSS g -band mosaic of the NGC 3190 group. The primary beam from Serra et al. (2013) is shown as a black dashed circle. The ALFALFA observations, which have an effective integration time of 40 s beam^{-1} , are sensitive to low column density structure across the entire group, and show that full extent of the primary H I structure. This feature, which we will refer to as HI_{Main} hereafter, contains all of T_N and the suggestive HIPASS emission, and more, covering $\sim 45 \text{ arcmin}$ (330 kpc) across the sky. The feature shows significant substructure, which is confirmed in a recent, deep pointing with KAT-7, and discussed in detail in Hess et al. (2016).

The ALFALFA data further show a low column density extension stretching SE from NGC 3162 in the direction of HI_{Main}. This appendage (HI_{Appendage}) is relatively low SNR, but is detected at $> 2.5\sigma$ in six contiguous beams, and has a narrow ($W_{50} = 31 \text{ km s}^{-1}$), but coherent structure in velocity space. Moreover, it is not simply a sidelobe of NGC 3162, since it extends $\sim 30 \text{ arcmin}$ from the centre of NGC 3162 (the peak of the first ALFA sidelobe is at $\sim 5 \text{ arcmin}$). The emission from the NGC 3162 extension does not connect directly to HI_{Main} at the sensitivity of the ALFALFA data, however, Fig. 6 demonstrates that they are well aligned both spatially and in velocity space, strongly suggesting that HI_{Main} is in fact connected to NGC 3162. The apparent connection of the H I features means that the entire structure is nearly $1^\circ 4'$ (610 kpc) long.

Several other weaker pieces of evidence fit with the interpretation that HI_{Main} is associated with NGC 3162. The mass budget, presented below in Section 4.3, argues for the reality of the connection to NGC 3162, since the tail contains 20 per cent of the H I mass of NGC 3162, but at least 40 per cent of the H I mass of any of the sources in HCG 44. Additionally, NGC 3162 shows some sign of the presence of a forward tail encompassing the smaller spiral AGC 200162, and the gas in the full H I structure appears to spread out spatially as it moves away from NGC 3162, possibly consistent with gas spreading as a function of time after leaving NGC 3162. However, we note that the velocity dispersion smoothly increases from ~ 20 to $\sim 60 \text{ km s}^{-1}$ moving away from NGC 3162, which seems to suggest energy input from HCG 44.

Indeed, since HI_{Main} lies within the disc velocities of both NGC 3162 and NGC 3190, it is reasonable to assume that the feature is related to both sources. However, The connection between the giant H I feature and the galaxies of HCG 44 is less clear. The moment 0 contours in Fig. 6 show a low column density bridge between the brightest parts of the tail and HCG 44. However, when examined in velocity space, the ALFALFA data hint that the extended H I may be composed of at least two superimposed kinematic features. Fig. 7 presents the region surrounding HI_{Main}, masked to contain just the emission clearly associated with the extended H I structures. The blue–green contours show the H I emission associated with HI_{Main} and HI_{Appendage} demonstrating that together they extend nearly continuously from NGC 3162 towards a point $\sim 20 \text{ arcmin}$ north of HCG 44, bending through velocity space from $\sim 1300 \text{ km s}^{-1}$ near NGC 3162 down to $\sim 1250 \text{ km s}^{-1}$, and then receding to $\sim 1400 \text{ km s}^{-1}$. Near the SE end of HI_{Main} the H I appears to reach south from the main feature towards NGC 3190,

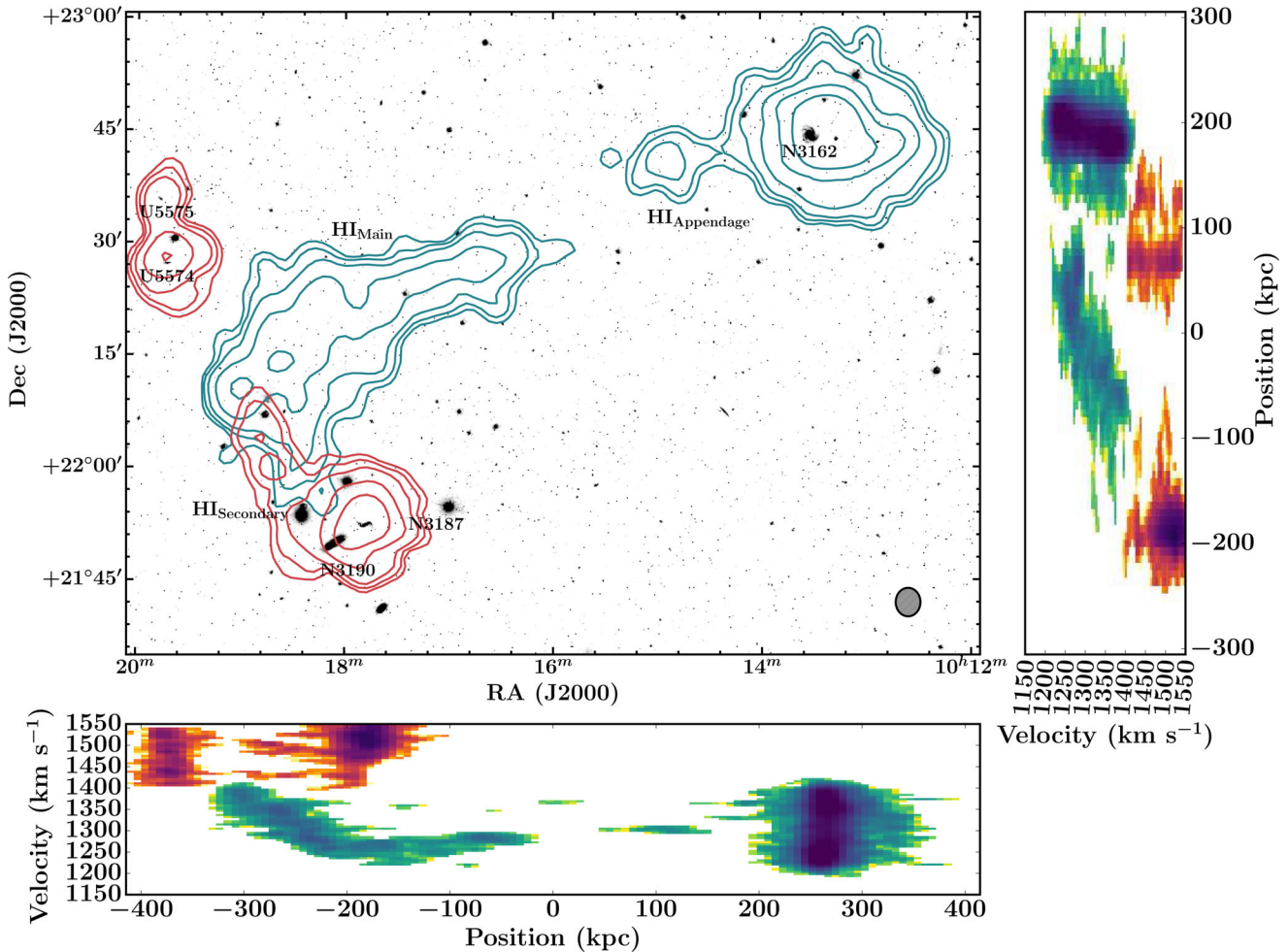


Figure 7. ALFALFA moment 0 H I contours, masked to highlight the primary H I features in the NGC 3190 group, overlaid on SDSS *g*-band optical images, with PV diagrams as in Fig. 6. The blue–green contours and blue to green coloured emission in the PV diagrams outline the entire main feature (HI_{Main}), which is visible at velocities below 1400 km s^{−1}, and appears to be associated with NGC 3162. The red contours and red to magenta coloured emission at velocities above 1400 km s^{−1} show the suggestion of a secondary feature (HI_{Secondary}) at higher velocity, which may suggesting a connection between NGC 3187 and UGC 5574, but this feature is only partially confirmed in deeper data (Hess et al. 2016). Contour levels are spaced logarithmically at 6, 12, 24, 48, 96, and 192 × 10¹⁷ atoms cm^{−2} (assuming the H I uniformly fills the ALFA beam). A colour version of this figure is available in the online version.

potentially suggesting a connection between HI_{Main} and the compact group. However, combination of the ALFALFA data with the WSRT data from Serra et al. (2013) and with recently obtained KAT-7 data (Hess et al. 2016) shows no strong evidence that HI_{Main} is connected to HCG 44 in the deeper cube.

The red contours in Fig. 7 show H I emission summed over velocities above 1400 km s^{−1}. These reveal a potential second, low column density, low SNR structure, hereafter HI_{Secondary}, visible at higher velocities (~1500 km s^{−1}). The structure extends east from NGC 3187 to encompass the cloud dubbed C_S in Serra et al. (2013), and then north towards UGC 5574, UGC 5575, and AGC 201174, at matching recessional velocities. This suggestion, however, is tentative, since the structure is detected at low significance (the significance of this structure in Fig. 7 is potentially exaggerated by the superposition of signal from multiple low significance features). The combined ALFALFA, WSRT, and KAT-7 data (Hess et al. 2016) also shows a compact H I cloud at the location of the northern peak in the red contours in Fig. 7, but do not show clear emission connecting it to C_S or NGC 3187. Thus, much of the extent of this structure is likely a result of beam smearing and artefacts in the ALFALFA data.

Fig. 6 also shows the apparent detection of an extended feature around 10^h15^m, +21°20′. Analysis of the ALFALFA spectrum at this position shows significant baseline fluctuations, consistent with low level RFI not masked by our other algorithms. Similarly, Fig. 6 also shows the suggestion of a southern extension off NGC 3185, however, this extension is in the region of the cube with low weights due to significant RFI. Thus, further observations of these regions will be necessary to know if there is any real H I emission to the south and south-east of HCG 44.

4.3 The H I mass budget in the NGC 3190 and NGC 3227 intragroup medium

The extended features in both the NGC 3190 and NGC 3227 groups contain a significant fraction of the total H I in the group. Tables 1 and 2 list the fluxes and H I masses for all sources detected by ALFALFA in the NGC 3227 and NGC 3190 groups, respectively, assuming a common distance of 25 Mpc (note that under this assumption, the NGC 3190 group contains 1.5× the H I mass of NGC 3227 group). Column 10 gives the full breakdown of H I in each group, listing the percentage of H I in each feature relative

to the sum of each subgroup. The dark plumes in the NGC 3227 group ($H_{\text{I, North}}$, $H_{\text{I, South}}$, and $H_{\text{I, NE}}$) have a combined $\log H_{\text{I}}$ mass of 9.47, 40 per cent of the total H_{I} in the group, and 53 per cent of the gas associated with NGC 3226/7. Only slightly less massive, $H_{\text{I, Main}}$ in the NGC 3190 group has a $\log H_{\text{I}}$ mass of 9.05, making up 10 per cent of the total group H_{I} mass. However, 40 per cent of the H_{I} mass of the NGC 3190 group is contained in NGC 3162; $H_{\text{I, Main}}$ is nearly 30 per cent of the combined H_{I} mass of the galaxies in HCG 44. For comparison, the Leo Ring makes up 24 per cent of the M_{HI} in the M96 group, and tidal plumes in the Leo Triplet constitute 14 per cent of the H_{I} mass in the M66 group (Stierwalt et al. 2009).

Comparisons to synthesis imaging can give a sense of the amount of low surface density gas in these intragroup features, but direct comparison is difficult due to significant differences in the data and the subsequent analysis. Tables 1 and 2 give synthesis measurements where available. WSRT observations recover 94 per cent of the flux in $H_{\text{I, NE}}$, and 74 per cent of the flux in $H_{\text{I, South}}$ in the NGC 3227 group. However, the large extent of the dark H_{I} features necessitates large primary beam corrections for the portions of the sources near the edge of the beam, which means these results should not be overinterpreted. For example, WSRT measures the flux of $H_{\text{I, South}}$ to be $5.1 \pm 0.2 \text{ Jy km s}^{-1}$. However, if one only measures the flux outside the Mundell et al. (1995) observation, and combines it with the Mundell et al. (1995) VLA flux of $2.42 \text{ Jy km s}^{-1}$, the summed synthesis observations give a flux of 6.0 Jy km s^{-1} . It is also worth noting that Mundell et al. (1995) measured a larger flux for $H_{\text{I, North}}$ than ALFALFA. However, the flux for $H_{\text{I, North}}$ is significantly blended with that of NGC 3227 in the ALFALFA data, so the artificially low flux of $H_{\text{I, North}}$ is likely due to conservative deblending. A reasonable deduction from these data is that a significant portion of the flux in the NGC 3227 subgroup is coming from the higher column density gas detected in synthesis observations.

ALFALFA detects fluxes significantly higher than those reported from WSRT in Serra et al. (2013), with the WSRT observations recovering between 43 and 88 per cent of the ALFALFA flux for galaxies in HCG 44. However, it is worth noting that the ALFALFA fluxes for NGC 3187 and NGC 3190 individually contain significant uncertainty, since their emission is blended in the ALFALFA cubes. It is also important to note that the flux of NGC 3185 is likely significantly affected by RFI, in spite of care during source parameter extraction to mitigate this effect. The range in recovered fluxes may suggest that HCG 44 is surrounded by significant lower column density gas.

Notably, ALFALFA detects the entirety of the H_{I} tail reported in Serra et al. (2013), and is unaffected by beam attenuation. Serra et al. (2013) report a total tail $\log H_{\text{I}}$ mass of 8.71 after including HIPASS emission detected in re-reduced cubes. ALFALFA measures a total $\log H_{\text{I}}$ tail mass of 9.05 ± 0.03 , $2.2\times$ higher than the WSRT+HIPASS measurement, significantly more than their stated typical flux uncertainties of 10–20 per cent.

5 DISCUSSION

The ALFALFA maps of the NBG 21-6 region underscore the need for sensitive, wide field surveys to obtain a complete understanding of ongoing galaxy evolution in groups. Specifically, the detection of H_{I} tails and bridges on scales larger than the group virial radius suggests strong ties between the evolution of galaxies in this region, and their group environment. Here we discuss the regional context of the sources presented above as evidence of ongoing hierarchical galaxy assembly.

5.1 HCG 44 in the context of the NGC 3190 group

Previous studies of the H_{I} in the NGC 3190 group have focused on understanding the evolutionary state of HCG 44 in the context of other compact groups. Verdes-Montenegro et al. (2001) propose an evolutionary sequence where a compact group's H_{I} deficiency (Haynes, Giovanelli & Chincarini 1984) increases with time due to multiple tidal interactions, and find the H_{I} deficiency of the members of HCG 44 to be high relative to other compact groups.³ Similarly, Borthakur, Yun & Verdes-Montenegro (2010) and Borthakur et al. (2015) use the Green Bank Telescope (GBT) to find evidence of diffuse H_{I} in compact groups, but find that most of the gas in a $180 \times 180 \text{ kpc}^2$ ($25 \times 25 \text{ arcmin}^2$) region surrounding the central galaxies of HCG 44 originates in high column density, disc-like structures. However, the apparent connection between NGC 3162 and HCG 44 in the ALFALFA data suggests that HCG 44 is best understood in the context of the entire NGC 3190 group.

Using H_{I} synthesis maps, Serra et al. (2013) propose that the large H_{I} feature originated due to tidal stripping, and suggest two specific origins: (1) within the compact group due to an interaction between NGC 3190 and NGC 3187, or (2) from an interaction between NGC 3162 and the members of the compact group during a close flyby. In the context of the entire group, the ALFALFA data strongly favour the second hypothesis.

Serra et al. (2013) suggest that if the H_{I} feature originated in HCG 44, it could at least partially explain the observed H_{I} deficiency. However, NGC 3162 dominates the H_{I} mass budget of the NGC 3190 group, with more than 150 per cent of the H_{I} mass contained in NGC 3185, NGC 3187, and NGC 3190 combined. While a highly disruptive event could remove ~ 50 per cent of the gas from e.g. NGC 3187, tidal forces should more easily remove ~ 20 per cent of the gas from the outskirts of an H_{I} -rich source like NGC 3162. Moreover, even after including the entire mass of $H_{\text{I, Main}}$, HCG 44 is still H_{I} deficient by more than a factor of 6. This suggests the members of HCG 44 were likely gas poor prior to an interaction with NGC 3162, which would make it even more difficult to remove the remaining, more tightly bound gas. Indeed, the potential detection of separate H_{I} features like $H_{\text{I, Secondary}}$ is consistent with the idea that the group has experienced other tidal interactions. Thus, the group context suggests a scenario where the interaction with NGC 3162 is only one of the interactions responsible for the removal of gas from the members of HCG 44, and that NGC 3162 is the primary source of the gas in the H_{I} feature, potentially delivered on a first infall to the group.

Further, the scale of the interactions surrounding HCG 44 suggests interesting questions for studies of other compact groups. Since not all tidal interactions favour the creation of massive tidal tails, the existence of a $\sim 600 \text{ kpc}$ tail suggests that groups with less fortuitously aligned interactions on similar scales should exist. Studies like Walker et al. (2016) have found only weak correlations between the total H_{I} in compact groups (as observed with GBT) and the properties of individual galaxies. However, the GBT has a 9 arcmin beam per pointing, and thus may miss significant group flux. In the case of HCG 44 ($\log M_{\text{HI, total}} = 9.45$), the entire compact group fits within just a couple of GBT beam pointings, but neither

³ Verdes-Montenegro et al. (2001) measure the H_{I} deficiency of NGC 3185 and NGC 3190 to be +1.0 (10 per cent of the expected gas), and the H_{I} deficiency of NGC 3187 to be +0.4 (40 per cent of the expected gas). Serra et al. (2013) get values a factor of 2 more deficient using the relations of Toribio et al. (2011), but we note that this difference can be explained by a typo swapping radius and diameter in the Toribio et al. (2011) relations.

the large H I tail ($\log M_{\text{HI}} = 9.05$) nor NGC 3162 ($\log M_{\text{HI}} = 9.65$) would be detected.

Thus, future wide field surveys will be important for understanding the regions surrounding compact groups. While HCG 44 may be an extreme example, it presents a cautionary note that a full understanding of compact group scaling relations will likely require careful consideration of the surrounding ~ 1 Mpc via deep, wide field H I surveys.

5.2 Interactions in their group context

As discussed in Section 4.1, the H I features in the NGC 3227 group suggest potential associations between NGC 3227 and other group members, including NGC 3213, UGC 5653, and the dwarf galaxies in close spatial proximity to the plumes. Similarly, the apparent connection between NGC 3162 and NGC 3190 makes it highly probable that they are at the same distance. In regions of the Local Universe with limited distance information, upcoming H I surveys will be an important tool for connecting sources with large distance uncertainties to those with primary distances. For example, a common way of determining group distances is to examine the Tully–Fisher relationship for the sources in the region (e.g. Fig. 9 and the corresponding discussion in Section 5.3). However, stringent selection of galaxies for accurate distance determination (e.g. mostly edge on, similar Hubble types, etc.) often leaves too few sources for reliable distance determination, especially in compact groups where interactions may contribute to increased scatter in the relation. In these groups H I mapping coupled with stellar distance estimates from *James Webb Space Telescope (JWST)* will be an important source of reliable distances.

The potential tidal connection between sources separated by ~ 300 kpc has potential consequences for searches for tidal dwarf galaxies. Mundell et al. (2004) report a potential TDG candidate in close proximity to NGC 3226/7. While the plumes in the NGC 3227 group do not show clear evidence of TDGs further out at our current resolution, they do indicate that searches for tidal dwarf galaxies may require imaging at significant separations from their parent galaxies. For example, Lelli et al. (2015) analyse VLA observations of six merging systems containing TDGs at $cz < 5000$ km s $^{-1}$. The edges of the extended H I emission in the NGC 3227 group would still extend just beyond the VLA primary beam if it were at $D = 70$ Mpc (5000 km s $^{-1}$). More, numerical simulations predict differing numbers of potential tidal substrates per system (e.g. Bournaud & Duc 2006; Yang et al. 2014), so understanding the full scale of each interaction will be important in validating these predictions.

5.3 Hierarchical structure formation in the NBG 21-6 region

The assembly of structures via mergers at all scales is a key prediction of hierarchical structure formation models. Thus, the discovery of two large tidal systems in relatively close proximity (~ 1 Mpc) motivates an examination of the surrounding region as a potential example of galaxy evolution on multiple scales.

As discussed in Section 2, the grouping of galaxies in the NBG 21-6 region depends on the scale used in the grouping algorithm. However, the histogram in Fig. 2 suggests a potential connection between galaxies in the broader region. Fig. 8 plots the recessional velocities from Fig. 2 as a function of angular separation from the centre of HCG 44 (HCG 44 was selected as the dynamical centre since it has the largest velocity dispersion of the region). The narrow velocity structure ($\sigma \sim 115$ km s $^{-1}$) over large angular scales suggests the

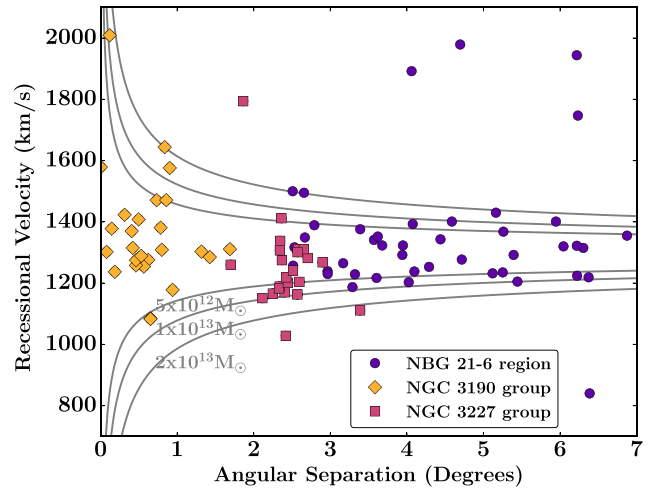


Figure 8. Angular separation on the sky versus recessional velocity for galaxies in the NBG 21-6 region, showing the dynamics of the larger region. Separations are measured from the centre of HCG 44, which we take to be $154.5 + 22$. Pink squares are the galaxies associated with the NGC 3227 group, and yellow diamonds are those associated with the NGC 3190 group. Purple circles are the other galaxies within 7° of the centre of HCG 44. At a distance of 25 Mpc, 7° corresponds to ~ 3 Mpc. Grey lines show simple caustic curves calculated using $v = \sqrt{GM/2r}$ (see Section 5.3).

region may be experiencing significant infall on to a larger, filamentary dark matter structure, though there are currently too few distance measurements to confirm this suggestion.

As a rough diagnostic tool, Fig. 8 also shows simple caustic curves calculated using $v = \sqrt{GM/2r}$ and assuming all sources are at a distance of 25 Mpc. The distribution of sources in the region approximately match the velocity distribution expected for a sources moving in a potential of $M = 2 \times 10^{13} M_\odot$. Given the assumption of uniform distance and that this system is likely far out of equilibrium, these curves are at best suggestive. However, simple calculations of the dynamical mass of the NGC 3190 and NGC 3227 groups using the median mass calculation defined in Heisler, Tremaine & Bahcall (1985) estimate masses of 8.5 and $3.3 \times 10^{12} M_\odot$, respectively. We speculate that these estimates are consistent with a picture of the NGC 3190 and NGC 3227 groups as part of larger structure, falling towards the centre of a larger common potential. Indeed, under the assumption that the two groups are moving towards each other, each with a velocity $v = \sqrt{G \times 2 \times 10^{13} M_\odot / (2 \times 1 \text{ Mpc})} \approx 200$ km s $^{-1}$, the two systems will merge in $\sim 3\text{--}4$ Gyr.

If all the galaxies in the region are actually part of the same structure and at a similar distance, we would expect them to follow the Tully–Fisher relation between their apparent magnitude and their H I velocity widths. Fig. 9 shows the Tully–Fisher relation for sources contained within by the $2 \times 10^{13} M_\odot$ caustics in this 6 Mpc diameter region. Optical magnitudes were taken from the NASA-Sloan Atlas⁴ where available, since the NSA compensates for significant shredding issues in the SDSS pipeline magnitudes. They were converted to *I*-band magnitudes using the Lupton (2005) relations from the SDSS website,⁵ and corrected for internal and galactic extinction following Giovanelli et al. (1997a). NSA inclinations were checked by eyeball measurements, and any sources with

⁴ <http://www.nsatlas.org/>

⁵ <http://www.sdss.org/dr12/algorithms/sdssUBVRITransform/#Lupton2005>

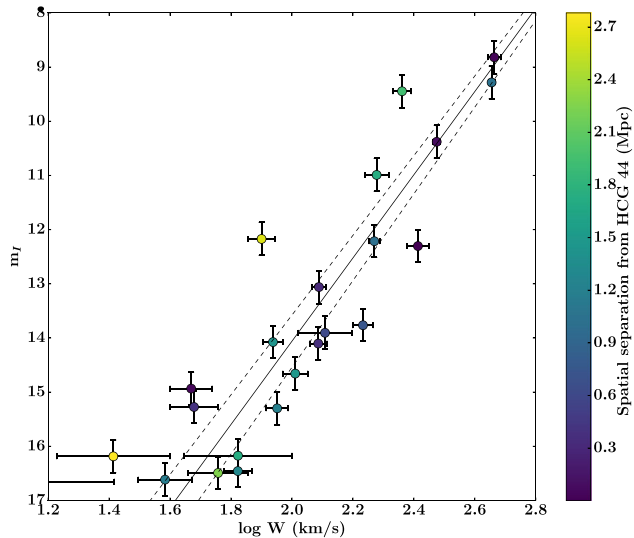


Figure 9. Tully–Fisher (TF) relation for the galaxies within the $2 \times 10^{13} M_{\odot}$ caustic curves within $R = 3$ Mpc of HCG 44, demonstrating the difficulty of TF methods for determining group distance. The observed sources are consistent with all being at the same distance, but due to the lack of qualifying sources with current survey data, this result is simply suggestive. Optical data were taken from the NASA–Sloan Atlas, and combined with the H I data from ALFALFA. The sample was corrected and culled following the procedure outlined in Giovanelli et al. (1997a), and discussed in Section 5.3. The black line is the I -band relation from Giovanelli et al. (1997c) for a distance of 25 Mpc, with the dashed lines representing the 1σ TF error budget discussed in Giovanelli et al. (1997b). The colour axis represents the distance of the source from the centre of HCG 44.

$(b/a)_{\text{NSA}} - (b/a)_{\text{eye}} > 0.2$ were removed. H I velocity widths from ALFALFA were converted to total widths following Giovanelli et al. (1997a), and all sources with $i < 40$ were removed from the sample. Assuming all sources are the same distance and follow the Tully–Fisher relation from Giovanelli et al. (1997a), we estimate the best-fitting distance to be 24.7 ± 1.1 Mpc using a single parameter orthogonal distance regression fit to the data.

The black line shows the I -band Tully–Fisher relation and error budget from Giovanelli et al. (1997a,b), for a distance of 25 Mpc. The scatter around the relation is consistent with all sources at the same distance for the small number of sources available. However, while this result is consistent with the interpretation of (almost) all of the sources in the region being at the same distance, the lack of sources makes it impossible to strongly differentiate between that and significant distance scatter, since a source with $W = 160 \text{ km s}^{-1}$ in the background by 5 Mpc, would only lie $\sim 1\sigma$ off the relation. Thus, this calculation demonstrates the difficulty of using secondary relations to determine group distance. Significant source statistics to perform this kind of analysis will have to await next generation deep H I and optical surveys, and improved understanding of the faint end of the baryonic Tully–Fisher relation.

The collective optical properties of galaxies in the NBG 21-6 region are consistent with expectations for galaxies experiencing significant large-scale infall in a hierarchical formation model. Most of the sources in the NBG 21-6 region are dwarfs with a r -band absolute magnitude of $M_r > -18$. Most sources in the region are H I rich (ALFALFA detects 73 per cent of the galaxies with measured redshifts in NBG 21-6), and significantly bluer than the average SDSS population. Moreover, sources within the NGC 3190 and NGC 3227 groups may be slightly more processed than the other galaxies in the region. ALFALFA detects 81 per cent of the 43

galaxies outside the two group, compared with 63 per cent of the 36 galaxies inside the groups, while examination of the colour distribution hints of that galaxies in the two groups appear to be somewhat redder than the other sources in the region (though this result is only marginally significant: a KS test on the two colour distributions gives $p = 0.08$). The largest galaxies near the centres of the NGC 3190 and NGC 3227 groups appear to be the reddest sources in the region, and indeed, Appleton et al. (2014) discuss the importance of the green valley colour of NGC 3226, demonstrating that the colour cannot be explained by a recent resurgence of star formation, but rather must result from quenching of fairly recent star formation.

These observations together paint an observational picture that mirrors recent simulations of group and cluster formation in a hierarchical context. HCG 44, which shows the largest velocity spread in the region (NGC 3185 and NGC 3187 are separated by $\sim 360 \text{ km s}^{-1}$), sits at the bottom of a larger potential well, with the other members of NGC 3190 delivering gas as they fall in. The merging pair NGC 3226/3227 rests near the bottom of a smaller potential that is falling towards the NGC 3190 well. Currently out of equilibrium, the region will continue to group and virialize as it makes its journey towards the Virgo Cluster.

The lack of primary distance information and the poorly populated nature of these groups cautions against overinterpretation of the current data, since without accurate distance measurements, the possibility remains that velocity crowding gives the appearance of connection between unrelated sources. Further, in a hierarchical model, it is possible that interactions play a significant role in increasing the velocity dispersion of the NGC 3190 and NGC 3227 groups, effecting mass estimates. However, this caution suggests important synergies between upcoming optical surveys (which can deliver more and better understood primary distance measurements), and upcoming sensitive, wide field H I surveys in understanding this fortuitously aligned group, and others like it.

6 CONCLUSIONS

In this paper we presented sensitive, wide field H I imaging of the NBG 21-6 region of the Leo Cloud of galaxies, observed as part of the ALFALFA H I survey, and follow up imaging of several regions using WSRT. We detect intragroup plumes that each extend over $\sim 2^\circ$ (~ 600 kpc), far beyond the primary beams of current synthesis telescopes. These features reveal interactions on larger scales than initially anticipated, providing an important tool for future modelling the recent history of these systems.

Specifically, the main conclusions of this paper are the following.

(i) The detection of multiple >300 kpc H I appendages in a $2 \times 2 \text{ Mpc}^2$ area of the sky mapped by ALFALFA. We find that the large gas tail to the north of HCG 44 detected in Serra et al. (2013) is likely associated with NGC 3162, as speculated by those authors, and find a tentative detection of a second, superimposed tail associated with NGC 3187 and UGC 5574. We additionally find the H I plumes in the NGC 3227 group presented in Mundell et al. (1995) extend far beyond the observed primary beam, and report the detection of a third, clumpier feature to the NE of the system, which displays a prominent kink in WSRT observations, suggestive of additional interactions.

(ii) H I features without associated stellar counterparts make up a significant component of the group gas content in the groups considered here. The intragroup gas makes up 10 per cent of the NGC 3190 group and 40 per cent of the NGC 3227 group.

(iii) The NGC 3190 group (containing HCG 44) and the NGC 3227 group may be part of a larger, dynamically young region experiencing active infall, and may merge in $\sim 3\text{--}4$ Gyr. Examination of the broader group dynamics and optical colours suggests that its relatively local proximity and projection on the sky make the NBG 21-6 region an important laboratory for studying the role of ongoing galaxy interactions in the progression of group galaxies from the blue cloud to the red sequence.

Our observations emphasize the importance of wide field, high sensitivity H I mapping. These massive, extended H I features were found in a region that had been extensively studied in H I; without the powerful combination of sensitivity, resolution, and field of view of ALFALFA we would not have been able to trace galaxy interactions in these large scales. Wide field, deep mapping with next generation H I detectors like the Square Kilometre Array Pathfinder (see Giovanelli & Haynes 2016) will be necessary for a full understanding of galactic evolution in the group environment.

ACKNOWLEDGEMENTS

The authors acknowledge the work of the entire ALFALFA collaboration in observing, flagging, and extracting sources in this field. The ALFALFA team at Cornell is supported by NSF grants AST-0607007 and AST-1107390 to RG and MPH and by grants from the Brinson Foundation. EAKA is supported by TOP1EW.14.105, which is financed by the Netherlands Organisation for Scientific Research (NWO). The authors would like to thank the referee for useful comments that helped improve the quality of the paper. LL would like to thank Michael G. Jones and Gregory Hallenbeck for several useful discussions.

This research used data from the Sloan Digital Sky Survey, funded by the Alfred P. Sloan Foundation, the participating institutions, the National Science Foundation, the US Department of Energy, the National Aeronautics and Space Administration, the Japanese Monbukagakusho, the Max Planck Society, and the Higher Education Funding Council for England.

The Westerbork Synthesis Radio Telescope is operated by the ASTRON (Netherlands Institute for Radio Astronomy) with support from the Netherlands Foundation for Scientific Research (NWO).

REFERENCES

- Amanullah R. et al., 2010, *ApJ*, 716, 712
 Appleton P. N. et al., 2014, *ApJ*, 797, 117
 Bekki K., Couch W. J., 2011, *MNRAS*, 415, 1783
 Blakeslee J. P., Lucey J. R., Barris B. J., Hudson M. J., Tonry J. L., 2001, *MNRAS*, 327, 1004
 Borthakur S., Yun M. S., Verdes-Montenegro L., 2010, *ApJ*, 710, 385
 Borthakur S., Yun M. S., Verdes-Montenegro L., Heckman T. M., Zhu G., Braatz J. A., 2015, *ApJ*, 812, 78
 Bournaud F., Duc P.-A., 2006, *A&A*, 456, 481
 Cannon J. M. et al., 2015, *AJ*, 149, 72
 Garcia A. M., 1993, *A&AS*, 100, 47
 Geller M. J., Huchra J. P., 1983, *ApJS*, 52, 61
 Giovanelli R., Haynes M. P., 2016, *A&AR*, 24, 1
 Giovanelli R., Haynes M. P., Herter T., Vogt N. P., Wegner G., Salzer J. J., da Costa L. N., Freudling W., 1997a, *AJ*, 113, 22
 Giovanelli R., Haynes M. P., Herter T., Vogt N. P., da Costa L. N., Freudling W., Salzer J. J., Wegner G., 1997b, *AJ*, 113, 53
 Giovanelli R., Haynes M. P., da Costa L. N., Freudling W., Salzer J. J., Wegner G., 1997c, *ApJ*, 477, L1
 Giovanelli R. et al., 2005, *AJ*, 130, 2598
 Haynes M. P., Giovanelli R., Chincarini G. L., 1984, *ARA&A*, 22, 445
 Haynes M. P. et al., 2011, *AJ*, 142, 170
 Heisler J., Tremaine S., Bahcall J. N., 1985, *ApJ*, 298, 8
 Hess K. M., Wilcots E. M., 2013, *AJ*, 146, 124
 Hess K. M. et al., 2016, *MNRAS*, in press
 Hibbard J. E., van der Hulst J. M., Barnes J. E., Rich R. M., 2001a, *AJ*, 122, 2969
 Hibbard J. E., van Gorkom J. H., Rupen M. P., Schiminovich D., 2001b, in Hibbard J. E., Rupen M., van Gorkom J. H., eds, *ASP Conf. Ser. Vol. 240, Gas and Galaxy Evolution*. Astron. Soc. Pac., San Francisco, p. 657
 Huchra J. P., Geller M. J., 1982, *ApJ*, 257, 423
 Janowiecki S. et al., 2015, *ApJ*, 801, 96
 Jones M. G., Papastergis E., Haynes M. P., Giovanelli R., 2016, *MNRAS*, 457, 4393
 Karachentsev I. D., Nasonova O. G., Karachentseva V. E., 2015a, *Astrophys. Bull.*, 70, 1
 Karachentsev I. D., Tully R. B., Makarova L. N., Makarov D. I., Rizzi L., 2015b, *ApJ*, 805, 144
 Lee-Waddell K., Spekkens K., Haynes M. P., Stierwalt S., Chengalur J., Chandra P., Giovanelli R., 2012, *MNRAS*, 427, 2314
 Lee-Waddell K. et al., 2014, *MNRAS*, 443, 3601
 Lelli F. et al., 2015, *A&A*, 584, A113
 Makarov D., Karachentsev I., 2011, *MNRAS*, 412, 2498
 Martin A. M., Giovanelli R., Haynes M. P., Saintonge A., Hoffman G. L., Kent B. R., Stierwalt S., 2009, *ApJS*, 183, 214
 Mould J. R. et al., 2000, *ApJ*, 529, 786
 Mundell C. G., Pedlar A., Axon D. J., Meaburn J., Unger S. W., 1995, *MNRAS*, 277, 641
 Mundell C. G., James P. A., Loiseau N., Schinnerer E., Forbes D. A., 2004, *ApJ*, 614, 648
 Postman M., Geller M. J., 1984, *ApJ*, 281, 95
 Rand R. J., 1994, *A&A*, 285, 833
 Saintonge A., 2007, *AJ*, 133, 2087
 Sancisi R., Fraternali F., Oosterloo T., van der Hulst T., 2008, *A&AR*, 15, 189
 Sault R. J., Teuben P. J., Wright M. C. H., 1995, in Shaw R. A., Payne H. E., Hayes J. J. E., eds, *ASP Conf. Ser. Vol. 77, Astronomical Data Analysis Software and Systems IV*. Astron. Soc. Pac., San Francisco, p. 433
 Serra P. et al., 2012, *MNRAS*, 422, 1835
 Serra P. et al., 2013, *MNRAS*, 428, 370
 Serra P. et al., 2015, *MNRAS*, 452, 2680
 Shostak G. S., Allen R. J., 1980, *A&A*, 81, 167
 Stierwalt S., Haynes M. P., Giovanelli R., Kent B. R., Martin A. M., Saintonge A., Karachentsev I. D., Karachentseva V. E., 2009, *AJ*, 138, 338
 Szabó G. M., Sárneczky K., Vinkó J., Csák B., Mészáros S., Székely P., Bebesi Z., 2003, *A&A*, 408, 915
 Tago E., Einasto J., Saar E., Tempel E., Einasto M., Vennik J., Müller V., 2008, *A&A*, 479, 927
 Tonry J. L., Dressler A., Blakeslee J. P., Ajhar E. A., Fletcher A. B., Luppino G. A., Metzger M. R., Moore C. B., 2001, *ApJ*, 546, 681
 Toribio M. C., Solanes J. M., Giovanelli R., Haynes M. P., Martin A. M., 2011, *ApJ*, 732, 93
 Tully R. B., 1987, *ApJ*, 321, 280
 Turner E. L., Gott J. R., III 1976, *ApJS*, 32, 409
 Verdes-Montenegro L., Yun M. S., Williams B. A., Huchtmeier W. K., Del Olmo A., Perea J., 2001, *A&A*, 377, 812
 Walker L. M., Johnson K. E., Gallagher S. C., Privon G. C., Kepley A. A., Whelan D. G., Desjardins T. D., Zabludoff A. I., 2016, *AJ*, 151, 30
 Wang J. et al., 2013, *MNRAS*, 433, 270
 Yang Y., Hammer F., Fouquet S., Flores H., Puech M., Pawlowski M. S., Kroupa P., 2014, *MNRAS*, 442, 2419
 Yoshii Y., Kobayashi Y., Minezaki T., Koshida S., Peterson B. A., 2014, *ApJ*, 784, L11
 Yun M. S., Ho P. T. P., Lo K. Y., 1994, *Nature*, 372, 530

This paper has been typeset from a $\text{\TeX}/\text{\LaTeX}$ file prepared by the author.