

University of Groningen

F1F0 ATP synthase subunit c is a substrate of the novel YidC pathway for membrane protein biogenesis

van der Laan, M.; Bechtluft, P.; Kol, S.; Nouwen, N.; Driessen, A. J. M.

Published in:
Journal of Cell Biology

DOI:
[10.1083/jcb.200402100](https://doi.org/10.1083/jcb.200402100)

IMPORTANT NOTE: You are advised to consult the publisher's version (publisher's PDF) if you wish to cite from it. Please check the document version below.

Document Version
Publisher's PDF, also known as Version of record

Publication date:
2004

[Link to publication in University of Groningen/UMCG research database](#)

Citation for published version (APA):

van der Laan, M., Bechtluft, P., Kol, S., Nouwen, N., & Driessen, A. J. M. (2004). F1F0 ATP synthase subunit c is a substrate of the novel YidC pathway for membrane protein biogenesis. *Journal of Cell Biology*, 165(2), 213-222. <https://doi.org/10.1083/jcb.200402100>

Copyright

Other than for strictly personal use, it is not permitted to download or to forward/distribute the text or part of it without the consent of the author(s) and/or copyright holder(s), unless the work is under an open content license (like Creative Commons).

The publication may also be distributed here under the terms of Article 25fa of the Dutch Copyright Act, indicated by the "Taverne" license. More information can be found on the University of Groningen website: <https://www.rug.nl/library/open-access/self-archiving-pure/taverne-amendment>.

Take-down policy

If you believe that this document breaches copyright please contact us providing details, and we will remove access to the work immediately and investigate your claim.

Downloaded from the University of Groningen/UMCG research database (Pure): <http://www.rug.nl/research/portal>. For technical reasons the number of authors shown on this cover page is limited to 10 maximum.

F₁F₀ ATP synthase subunit c is a substrate of the novel YidC pathway for membrane protein biogenesis

Martin van der Laan, Philipp Bechtluft, Stef Kol, Nico Nouwen, and Arnold J.M. Driessen

Department of Microbiology, Groningen Biomolecular Sciences and Biotechnology Institute, University of Groningen, 9751 NN Haren, Netherlands

The *Escherichia coli* YidC protein belongs to the Oxa1 family of membrane proteins that have been suggested to facilitate the insertion and assembly of membrane proteins either in cooperation with the Sec translocase or as a separate entity. Recently, we have shown that depletion of YidC causes a specific defect in the functional assembly of F₁F₀ ATP synthase and cytochrome *o* oxidase. We now demonstrate that the insertion of in vitro-synthesized F₁F₀ ATP synthase subunit c (F₀c) into inner membrane vesicles requires YidC. Insertion is independent of the proton motive

force, and proteoliposomes containing only YidC catalyze the membrane insertion of F₀c in its native transmembrane topology whereupon it assembles into large oligomers. Co-reconstituted SecYEG has no significant effect on the insertion efficiency. Remarkably, signal recognition particle and its membrane-bound receptor FtsY are not required for the membrane insertion of F₀c. In conclusion, a novel membrane protein insertion pathway in *E. coli* is described in which YidC plays an exclusive role.

Introduction

All major energy-transducing cellular membranes contain one or more members of the cytochrome oxidase biogenesis (Oxa) family of membrane proteins (Kuhn et al., 2003). In the inner membrane of yeast mitochondria, Oxa1 is required for the insertion of several membrane proteins among which are subunits of the F₁F₀ ATP synthase and cytochrome *c* oxidase (Stuart, 2002). These include mitochondrion-encoded proteins, like Cox2 (Bauer et al., 1994; He and Fox, 1997), as well as nucleus-encoded proteins, like Oxa1 itself (Herrmann et al., 1997). The latter are first imported into the mitochondrial matrix and subsequently inserted into the inner membrane. The chloroplast homologue Alb3 is required for the insertion of the light-harvesting complex protein into the thylakoid membrane (Moore et al., 2000). In the Gram-negative bacterium *Escherichia coli*, an Oxa1 homologue termed YidC was found that could be cross-linked to the transmembrane segments of nascent membrane proteins, like FtsQ (Scotti et al., 2000), leader peptidase (Houben et al., 2000), and MtlA (Beck et al., 2001). This process involves targeting via the signal recognition particle (SRP) pathway (Herskovits et al., 2000) and the initial

membrane insertion by the SecYEG translocase (De Gier and Luirink, 2001). However, YidC is not essential for the insertion of the Sec-dependent model protein FtsQ, as the $\Delta\psi$ -dependent membrane integration of this protein can be reconstituted with proteoliposomes containing only SecYEG (van der Laan et al., 2004). Initially, only the Sec-independent phage proteins M13 procoat (Samuelson et al., 2000) and Pf3 coat (Chen et al., 2002) were found to depend strictly on YidC for membrane insertion. Therefore, it was not clear why YidC is essential for cell viability. Recently, we have shown that depletion of YidC causes severe defects in the functional assembly of both cytochrome *o* oxidase and F₁F₀ ATP synthase (van der Laan et al., 2003), which is reminiscent of the effects of mutations in *OX41* (Altamura et al., 1996). In particular, the amounts of cytochrome *o* oxidase subunit a and the small, ring-forming F₀ subunit c (F₀c) were exceptionally sensitive to YidC depletion. Consequently, YidC-depleted cells and inner membrane vesicles (IMVs) are severely impaired in their ability to generate a proton motive force (PMF) with oxidizable substrates or ATP (van der Laan et al., 2003). Although the loss of cytochrome *o* oxidase or F₁F₀ ATPase individually may not be detrimental for the cells, loss of both enzymes will severely impair growth. Cells are no

Address correspondence to Arnold J.M. Driessen, Dept. of Microbiology, Groningen Biomolecular Sciences and Biotechnology Institute, University of Groningen, Kerklaan 30, 9751 NN Haren, Netherlands. Tel.: 31-50-3632164. Fax: 31-50-3632154. email: a.j.m.driessen@biol.rug.nl

Key words: YidC; F₁F₀ ATP synthase; membrane insertion; membrane targeting; complex assembly

Abbreviations used in this paper: AMdiS, 4-acetamido-4'-maleimidylstilbene-2,2'-disulfonic acid; F₀a, F₀ subunit a; F₀c, F₀ subunit c; IMV, inner membrane vesicle; PMF, proton motive force; SRP, signal recognition particle.

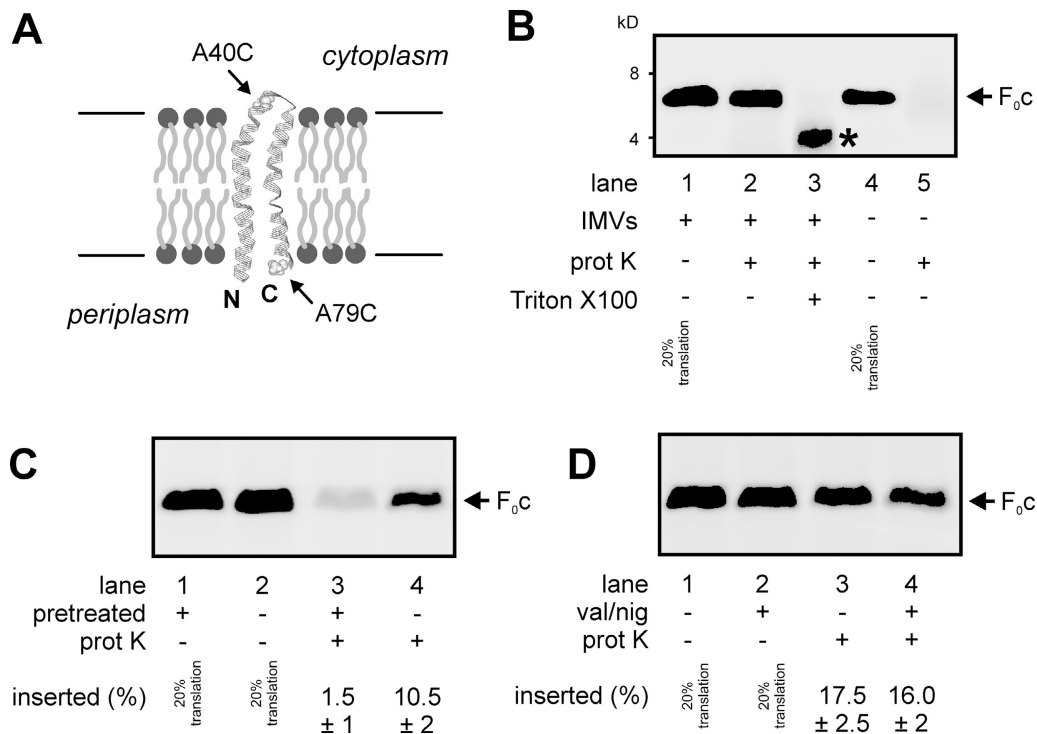


Figure 1. In vitro-synthesized F_{0c} inserts into *E. coli* inner membrane vesicles. (A) Membrane topology model of F_{0c} based on the NMR solution structure (1A91.pdb). Arrows indicate the positions of the introduced cysteine mutations for topology analysis. (B) In vitro-synthesized F_{0c} inserts into *E. coli* wild-type IMVs. Translation reactions were performed in the presence (lanes 1–3) or absence (lanes 4 and 5) of 5- μ g IMVs. Subsequently, the translation reaction samples were treated with 0.4 mg/ml proteinase K (lanes 2, 3, and 5) in the presence (lane 3) or absence (lanes 1, 2, 4, and 5) of 1% (vol/vol) Triton X-100. In the presence of Triton X-100, a proteolytic fragment of F_{0c} is formed (asterisk). Where indicated, 20% standards of the translation reactions are shown. (C) A membrane protein is required for the membrane insertion of F_{0c}. IMVs were pretreated in the presence (lanes 1 and 3) or absence (lanes 2 and 4) of proteinase K as described in the Materials and methods section. (D) The PMF is not required for the membrane insertion of F_{0c}. Insertion reactions were performed in the absence (lanes 1 and 3) or in the presence (lanes 2 and 4) of 1 μ M valinomycin (val) and 1 μ M nigericin (nig). Insertion efficiencies were calculated from three independent experiments.

longer able to generate a PMF with either oxidizable substrates, or under fermentative conditions, with ATP. Thus, these cells will be impaired in maintaining the intracellular pH, a process that is essential for viability. Yi et al. (2003) have shown that in addition to F_{0c}, membrane insertion of F₀ subunit a (F_{0a}) is also inhibited by depletion of YidC in vivo.

E. coli F₁F₀ ATP synthase consists of a membrane-integral F₀ part (subunit composition a₁b₂c₁₀) and a peripherally bound, catalytic F₁ subcomplex ($\alpha_3\beta_3\gamma\delta\epsilon$; Capaldi and Aggeler, 2002). During the catalytic cycle, the reversible protonation of F_{0c} at residue Asp61 induces a rotation of γ , ϵ , and the c ring relative to the a₃b₃ hexagon. Subunits F_{0b} and F₁ δ form a so-called “stator” that ensures that F_{0a} and the $\alpha_3\beta_3$ hexagon do not rotate together with $\gamma\epsilon c_{ring}$. This causes a rotor torque that is believed to be translated into conformational changes of the catalytic residues by elastic power transmission finally leading the synthesis of ATP from ADP and phosphate (Weber and Senior, 2003). Although the mechanisms of energy transduction have been studied in great detail, remarkably little is known about the assembly of large energy-transducing membrane protein complexes like F₁F₀ ATP synthases or cytochrome oxidases. In yeast, proteins have been identified that are required for their biogenesis, but their precise function is not understood

(Ackerman and Tzagoloff, 1990; Ackerman, 2002; Carr and Winge, 2003). The *E. coli* F₁F₀ ATP synthase represents the simplest form of this enzyme, containing only the core subunits described above. The observed YidC requirement for the assembly of functional F₁F₀ ATP synthase in vivo, and particularly of the membrane insertion of the F_{0c} rotor ring subunit, indicates that the biogenesis of this key enzyme is more complex than anticipated so far (Arechaga et al., 2002). To understand the role of YidC in the membrane insertion and oligomeric assembly of F_{0c}, we have used an in vitro translation/insertion assay that has been successfully used to determine the minimal requirements for the Sec-dependent membrane insertion of FtsQ (van der Laan et al., 2004). Here, we demonstrate that in vitro membrane insertion of F_{0c} is blocked by YidC depletion and can be reconstituted with proteoliposomes containing only YidC, whereas SecYEG, the PMF, and the SRP pathway are not required.

Recently, Serek et al. (2004) reported that YidC alone reconstituted into proteoliposomes stimulates the in vitro membrane insertion of Pf β coat, indicating that YidC can function as a separate membrane protein insertase. Our data demonstrate an essential role of the YidC insertase in the assembly of a Sec-independent, endogenous *E. coli* membrane protein. F_{0c} is the first described natural substrate of this

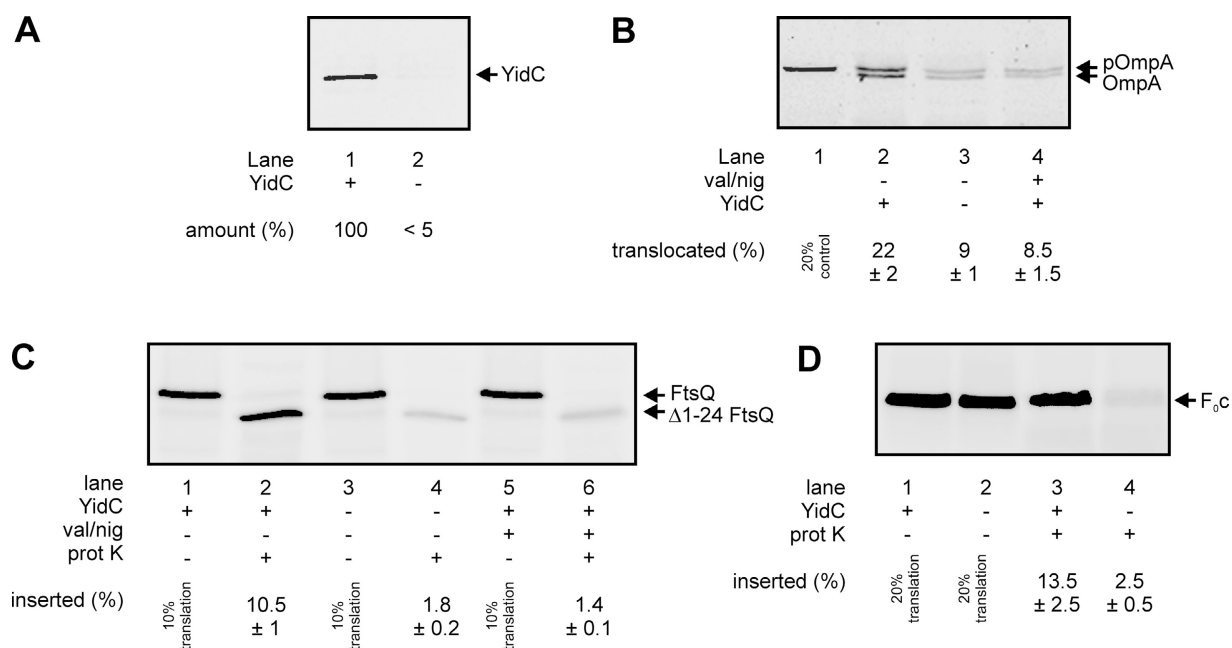


Figure 2. YidC is required for the membrane insertion of F₀c. (A) YidC can be efficiently depleted from *E. coli* JS7131 IMVs. Cells were grown as described in the Materials and methods section in the presence of 0.2% arabinose (lane 1) or 0.2% glucose (lane 2), and the amounts of YidC in IMVs were monitored by Western blotting. YidC-depleted IMVs exhibit reduced proOmpA translocation (B, lanes 1–3) and FtsQ insertion activities (C, lanes 1–4). The same extents of reduction are observed when the reactions are performed with wild-type IMVs in the presence of 1 μM valinomycin (val) and 1 μM nigericin (nig) to uncouple the PMF (B, lane 4; C, lanes 5 and 6). Post-translational proOmpA translocation as well as cotranslational FtsQ insertion reactions contained 25-μg IMVs. Efficiencies given in B and C were calculated from two independent experiments. (D) YidC depletion blocks membrane insertion of F₀c. F₀c insertion reactions were performed as described in the legend to Fig. 1. Efficiencies given in D were calculated from three independent experiments.

novel membrane protein biogenesis pathway, which appears to be used by bacteriophages to assemble their coat proteins in the host cell membrane.

Results

Insertion of F₀c into IMVs requires YidC, but is independent of the PMF

E. coli F₀c is a very hydrophobic polypeptide of 79 amino acids in length. It consists of two transmembrane helices connected by a small polar loop that is exposed to the cytoplasm (Fig. 1 A; for review see Girvin et al., 1998). [³⁵S]methionine-labeled F₀c was synthesized in vitro in an *E. coli* S135 lysate (Fig. 1 B, lane 1). As the predicted molecular mass of F₀c is 8.3 kD, the translation product showed an aberrant running behavior on SDS-PAGE typically observed for hydrophobic membrane proteins. Western blot analysis of wild-type *E. coli* IMVs revealed that endogenous F₀c migrates at an identical position (unpublished data), indicating that the in vitro translation product is full-length F₀c. When *E. coli* IMVs were present during translation, a significant fraction of the F₀c was found to be resistant to added proteinase K (Fig. 1 B, lane 2), trypsin, and pronase (unpublished data). Furthermore, endogenous F₀c in IMVs appeared protease resistant as well. Solubilization of IMVs with detergent before protease treatment led to partial cleavage of F₀c (Fig. 1 B, lane 3), probably due to protection of the hydrophobic domains by the detergent micelles. In the absence of membranes and detergent, F₀c was completely

degraded (Fig. 1 B, lanes 4 and 5). Together, this indicates that the protease-protected conformation of F₀c represents its membrane-inserted state. Insertion efficiency in the presence of saturating amounts of IMVs was 18–25%. When IMVs were pretreated with proteinase K before being added to the translation reaction, membrane insertion of F₀c was almost completely blocked (Fig. 1 C), indicating that a membrane protein is needed to facilitate this process. However, the PMF is not required, as uncoupling of IMVs by the addition of the ionophores valinomycin and nigericin had no effect on the membrane insertion of F₀c (Fig. 1 D), whereas it severely inhibited the PMF-dependent membrane insertion of the Sec-dependent model protein FtsQ (Fig. 2 C; van der Laan et al., 2004).

Previously, we have shown that the amount of F₀c in IMVs depleted from YidC is strongly reduced (van der Laan et al., 2003). To determine if YidC plays a direct role in the membrane insertion of F₀c, in vitro insertion assays were performed with YidC-depleted IMVs prepared from *E. coli* strain JS7131 (Samuelson et al., 2000) grown in the presence of 0.2% glucose. To achieve optimal depletion (Fig. 2 A) and to avoid pleiotrophic effects related to the stationary phase, cells were diluted 1:1 after every generation. This procedure led to a very efficient YidC depletion (Fig. 2 A) and an almost complete inability to generate a PMF with ATP (unpublished data). Consequently, PMF-dependent processes such as the translocation of proOmpA (Fig. 2 B, lanes 2 and 3) and the membrane insertion of FtsQ (Fig. 2 C, lanes 1–4) were strongly affected in these YidC-depleted

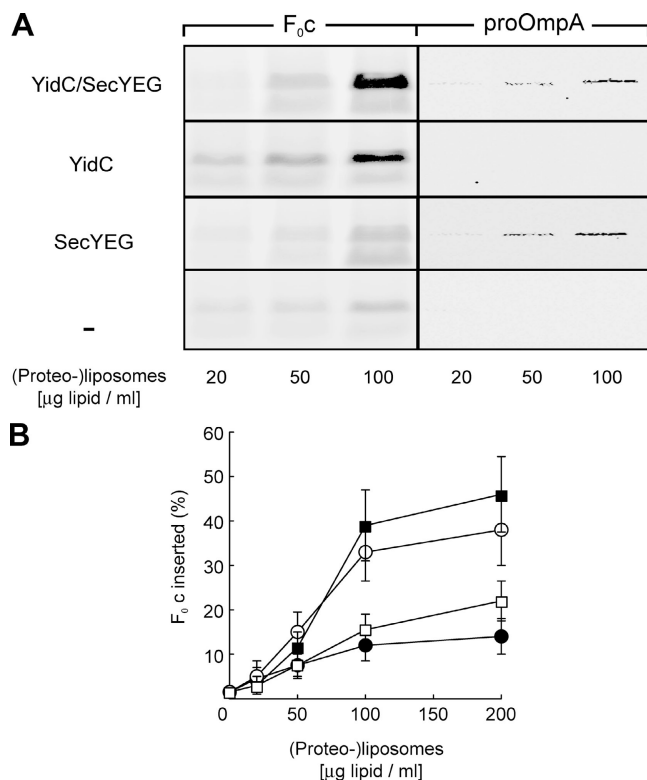


Figure 3. YidC alone is sufficient to catalyze the membrane insertion of F_{0c} into proteoliposomes. (A) Co-translational F_{0c} insertion as well as post-translational proOmpA translocation reactions were performed in the presence of the indicated amounts of (proteo-)liposomes reconstituted with YidC and SecYEG (YidC/SecYEG), YidC alone, SecYEG alone, or without any proteins (-). (B) F_{0c} insertion efficiency at different (proteo-)liposome concentrations was quantified from the amount of protease-protected material in the presence of SecYEG/YidC (■), YidC (○), SecYEG (□), or protein-free (●) liposomes. The amount of F_{0c} synthesized was comparable in all reactions (not depicted) and was set as 100%. All data points shown in B are averages from five independent experiments in which proteoliposomes from three independent reconstitutions were used. Purified SecYEG and YidC were both used at a protein/lipid ratio of 1:100 (wt/wt).

IMVs. The extents of inhibition caused by the depletion of YidC were comparable to that observed with wild-type IMVs in the presence of uncouplers (Fig. 2 B, lane 4; Fig. 2 C, lanes 5 and 6). Remarkably, the membrane insertion of F_{0c} into IMVs was almost completely blocked upon depletion of YidC (Fig. 2 D). As we have shown that F_{0c} inserts independently of the PMF (Fig. 1 D), it can be concluded that this effect is directly caused by the loss of YidC.

YidC proteoliposomes catalyze the SecYEG-independent membrane insertion of F_{0c}

The observation that YidC is required for the insertion of F_{0c} into IMVs did not exclude that other membrane proteins, like the Sec translocase or other unknown components, are involved as well. Only the reconstitution of F_{0c} insertion into proteoliposomes could clearly define the minimal requirements for this process. Therefore, we prepared (proteo-)liposomes containing either YidC together with SecYEG, YidC, or SecYEG alone, or containing no protein, and titrated them into the translation mixture. Upon addi-

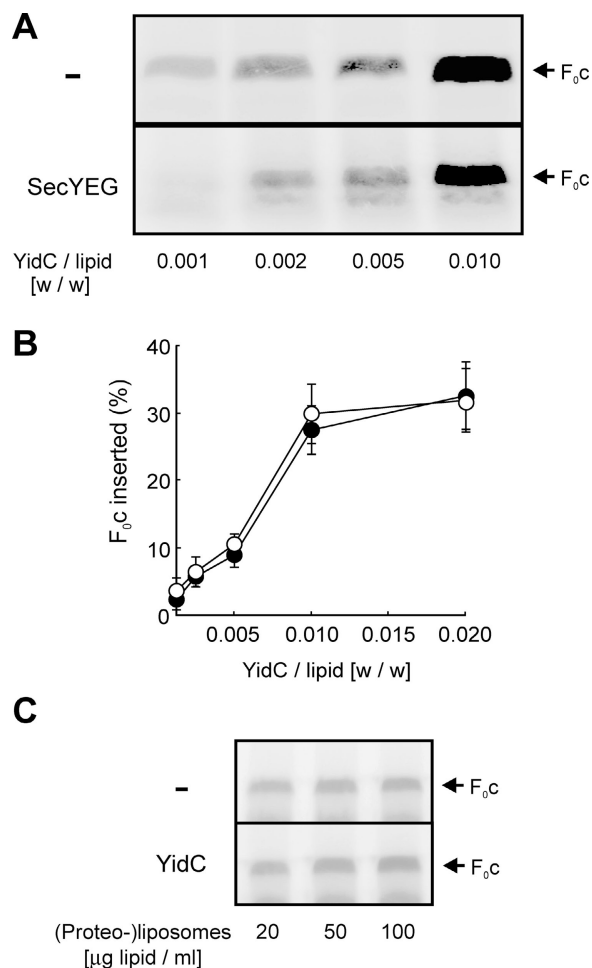


Figure 4. SecYEG is not required for F_{0c} membrane insertion. (A) Reactions were performed as described in the legend of Fig. 3 in the presence of 100 μg lipid/ml proteoliposomes. For the reconstitutions, YidC was used at the indicated protein-to-lipid ratios together with (SecYEG) or without (-) a fixed amount of SecYEG (protein/lipid ratio of 1:100 [wt/wt]). (B) F_{0c} insertion efficiencies were quantified from the amount of protease-protected material in the presence (●) or absence (○) of SecYEG. Synthesis of F_{0c} was comparable in all reactions (not depicted). All data points shown in B are averages from three independent experiments. Proteoliposomes from two independent reconstitutions were used. When added after translation has been stopped with chloramphenicol, YidC proteoliposomes do not stimulate membrane insertion of F_{0c} (C). Translation reactions were performed in the absence of membranes. Reactions were stopped by the addition of 25 μg/ml chloramphenicol. After 5 min, indicated amounts of YidC proteoliposomes or protein-free liposomes were added, and reaction mixtures were incubated for 20 min at 37°C.

tion of protein-free liposomes, small amounts of protease-protected F_{0c} were detected (Fig. 3 A), indicating a low level of spontaneous membrane insertion. However, proteoliposomes containing YidC supported highly efficient membrane insertion of F_{0c} (Fig. 3, A and B). Insertion efficiency achieved in the presence of saturating amounts of proteoliposomes was ~40%. Co-reconstitution of SecYEG did not significantly increase the amount of membrane-inserted F_{0c} (Fig. 3, A and B). Moreover, the presence of SecYEG alone did not stimulate F_{0c} insertion compared with protein-free liposomes (Fig. 3, A and B). In contrast, proteoliposomes

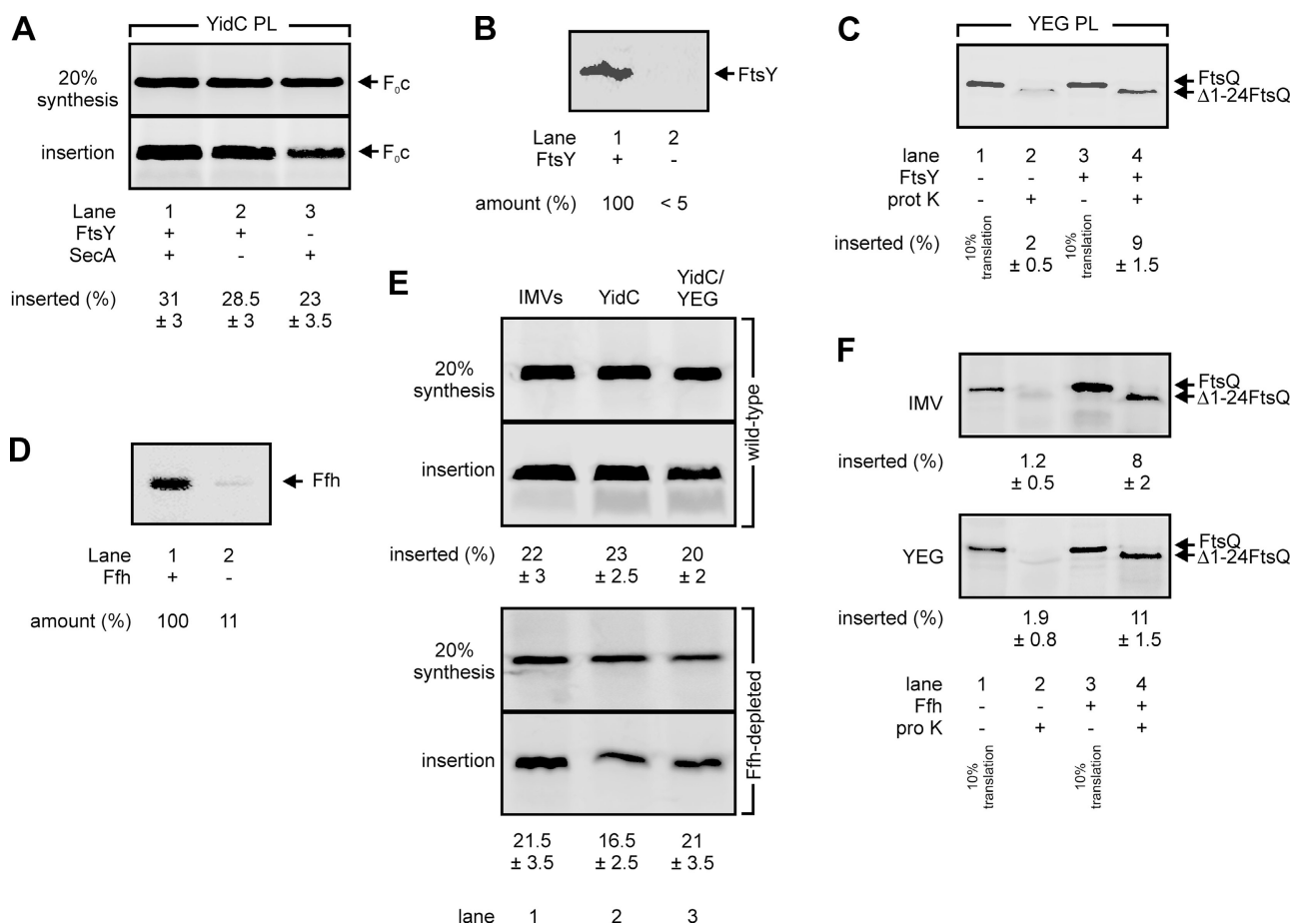


Figure 5. Membrane insertion of F₀c does not require the SRP pathway or SecA. (A) Translation lysate was immunodepleted from either FtsY or SecA, and F₀c insertion reactions were performed in the presence of YidC proteoliposomes (YidC PL, 100 μg lipid/ml; protein/lipid ratio 1:100). (B) A Western blot with α-FtsY antiserum using 20 μg wild-type (lane 1) or FtsY-depleted (lane 2) lysate. (C) Depletion of FtsY from the lysate inhibits the FtsQ insertion into SecYEG proteoliposomes. Reactions were performed with FtsY-depleted (lanes 1 and 2) or wild-type (lanes 3 and 4) lysate in the presence of Na⁺-loaded SecYEG proteoliposomes (200 μg lipid/ml) and 1 μM valinomycin to generate a transmembrane electrical potential. (D) Ffh can be efficiently depleted in vivo in *E. coli* strain HDB51. A Western blot performed with 25 μg HDB51 wild-type (lane 1) or Ffh-depleted (lane 2) lysate is shown. (E) Ffh depletion has no effect on F₀c insertion into IMVs (lane 1) or proteoliposomes containing YidC (lane 2) or YidC together with SecYEG (lane 3). Reactions were performed with wild-type or Ffh-depleted HDB51 lysate in the presence of 5-μg IMVs or 100 μg lipid/ml proteoliposome. Purified YidC and SecYEG were reconstituted at a protein/lipid ratio of 1:100. (F) Ffh depletion inhibits membrane insertion of FtsQ. Reactions were performed with Ffh-depleted (lanes 1 and 2) and wild-type (lanes 3 and 4) HDB51 lysate in the presence of 25-μg IMVs or 200 μg lipid/ml Na⁺-loaded SecYEG proteoliposome. FtsQ and F₀c insertion efficiencies were calculated from two and three independent experiments, respectively.

containing SecYEG mediated the translocation of proOmpA independently of YidC, showing that the reconstituted Sec translocase is functional (Fig. 3 A). These data indicate that YidC alone is able to catalyze membrane integration of F₀c independently of the Sec translocase. To further examine a possible role of SecYEG in YidC-mediated insertion of F₀c, experiments were performed using limiting YidC concentrations. YidC was reconstituted at different protein-to-lipid ratios in the presence or absence of a fixed amount of SecYEG. However, in no case was a significant stimulation of F₀c insertion by SecYEG observed (Fig. 4, A and B).

Recently, we have shown that the insertion of the Sec-dependent membrane protein FtsQ is a strictly cotranslational process. In vitro, no insertion is observed when the membranes are added after translation has been terminated by the addition of chloramphenicol (Houben et al., 2000; van der Laan et al., 2004). Under identical conditions, post-

translational insertion of F₀c into YidC proteoliposomes also could not be detected (Fig. 4 C).

YidC-mediated membrane insertion of F₀c does not require the SRP pathway

Co-translational targeting to the Sec translocase occurs via the SRP pathway (Herskovits et al., 2000). SRP binds to particularly hydrophobic signal sequences or transmembrane segments as they emerge from the ribosome. Upon interaction of SRP with its membrane-bound receptor FtsY, GTP hydrolysis drives the release of SRP from the nascent chain and the transfer of the translating ribosome to the Sec translocase. It is not clear whether the SRP pathway also delivers proteins directly to YidC. The YidC-dependent phage proteins M13 procoat (De Gier et al., 1998) and Pf3 coat (Chen et al., 2002) do not require SRP. However, Fröderberg et al. (2003) have constructed a fusion protein that does

not depend on SecYEG, but requires YidC as well as the SRP pathway *in vivo*. In addition, the chloroplast YidC homologue Alb3 forms a complex with cpSRP and cpFtsY that can be stabilized by the addition of the nonhydrolysable GTP analogue GMP-PNP (Moore et al., 2003). As F_{0c} represents the first “native” substrate of a novel membrane protein insertion pathway in which YidC seems to play a key role, we analyzed the involvement of the SRP pathway as well as the SecA motor protein. SecA is strictly required for the SecYEG-dependent translocation of the large periplasmic domain of FtsQ (van der Laan et al., 2004). As expected, immunodepletion of SecA from the translation lysate had no effect on the insertion of F_{0c} into YidC proteoliposomes (Fig. 5 A, lane 2), whereas under identical conditions it completely blocks FtsQ insertion (van der Laan et al., 2004). Remarkably, immunodepletion of the SRP receptor FtsY also did not significantly affect YidC-mediated F_{0c} insertion (Fig. 5 A, lane 3). Efficient FtsY depletion was demonstrated by Western blotting (Fig. 5 B) and by the inhibitory effect on membrane insertion of FtsQ (Fig. 5 C) as described before (van der Laan et al., 2004). To confirm this observation, we applied a second, independent experimental approach using a translation lysate that had been depleted from SRP *in vivo*. *E. coli* SRP consists of a 4.5S RNA and a 48-kD protein called Ffh. Strain HDB51 (Lee and Bernstein, 2001) carries the *ffh* gene under control of the arabinose promoter. Therefore, cells can be depleted from Ffh by growing them in the presence of glucose. Translation lysates were prepared from cells grown under Ffh depletion conditions as well as from Ffh-containing control cells grown in the presence of arabinose. Efficiency of depletion was monitored by Western blotting (Fig. 5 D). In agreement with the results obtained with FtsY-depleted lysate, we did not observe any major effect of Ffh depletion on the insertion of F_{0c} into IMVs, YidC proteoliposomes, or YidC/SecYEG proteoliposomes (Fig. 5 E). In contrast, the insertion of FtsQ into either IMVs or SecYEG proteoliposomes was strongly inhibited upon depletion of Ffh (Fig. 5 F). Together, these data demonstrate that membrane targeting and YidC-mediated membrane insertion of F_{0c} does not require the SRP pathway.

F_{0c} inserted into YidC proteoliposomes has acquired the native transmembrane topology

Next, we addressed the question of whether F_{0c} is inserted into YidC proteoliposomes in the correct transmembrane topology. F_{0c} exposes both the NH_2 and the $COOH$ terminus to the periplasm while the small loop connecting the two hydrophobic helices is located in the cytoplasm (Fig. 1 A). In our *in vitro* system, the lumen of the proteoliposomes corresponds to the periplasmic side of the membrane. If F_{0c} has acquired the correct transmembrane topology, the $COOH$ terminus should be inside the proteoliposomes, and therefore not accessible for membrane-impermeable chemical reagents. In contrast, it should be possible to modify the cytoplasmic loop that remains on the outside of the proteoliposomes with such probes. We introduced unique cysteine residues into the protein at position 79 at the $COOH$ terminus (Fig. 1 A, F_{0c} A79C) and at position 40 in the cytoplasmic loop (Fig. 1 A, F_{0c} A40C). Both modified proteins in-

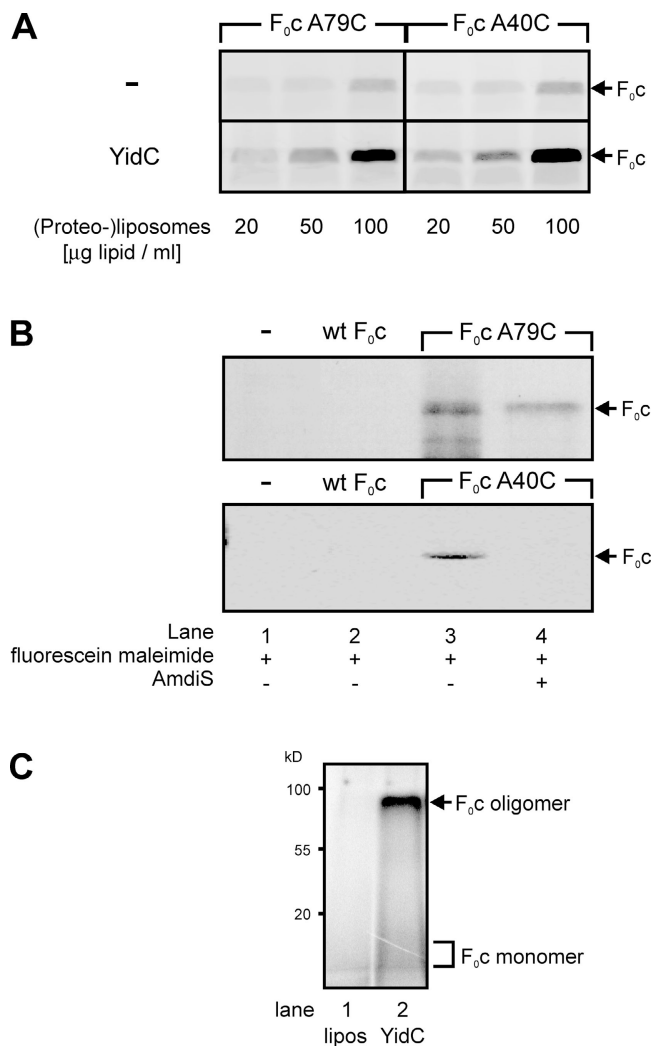


Figure 6. F_{0c} inserted into YidC proteoliposomes has acquired its native transmembrane topology. (A) F_{0c} A79C and F_{0c} A40C insert into YidC proteoliposomes comparable to the wild-type protein. Reactions were performed as described in the legend to Fig. 3 in the presence of the indicated amounts of (proteo-)liposomes. (B) For cysteine accessibility experiments, wild-type F_{0c} and both single-cysteine derivatives were synthesized and inserted into YidC proteoliposomes in nonradioactive translation reactions. Subsequent labeling was performed with 1 mM fluorescein maleimide (lanes 1–4) as described in the Materials and methods section. A preincubation with 0.5 mM Amdis was performed where indicated (lane 4). To control specificity of labeling, the same reactions were performed in the absence of mRNA (lane 1) or with the cysteine-free wild-type F_{0c} (lane 2). (C) *In vitro*-synthesized F_{0c} assembles into large oligomeric complexes after insertion into YidC proteoliposomes. Reactions were performed in the presence of protein-free liposomes (lane 1) or YidC proteoliposomes (lane 2) as described in the Materials and methods section, and the high molecular mass oligomers were analyzed by Blue Native PAGE. On this gel system, monomeric F_{0c} (in the presence of 1% SDS) migrates as a very diffuse polypeptide band (not depicted).

serted into proteoliposomes in a YidC-dependent manner comparable to wild-type F_{0c} (Fig. 6 A). For the determination of the transmembrane topology of proteoliposome-inserted F_{0c} , the protein was synthesized without radioactive tracers in the presence of YidC proteoliposomes. After the translation–insertion reaction and subsequent proteinase K

treatment, proteoliposomes were isolated from the reaction mixture and incubated with the membrane-permeable, fluorescent cysteine-modifying reagent fluorescein maleimide. As expected, both F₀c A79C and F₀c A40C were labeled, whereas the cysteine-less wild-type F₀c was not (Fig. 6 B, lanes 2 and 3). Pretreatment of the proteoliposomes with the membrane-impermeable cysteine-reactive reagent 4-acetamido-4'-maleimidylstilbene-2,2'-disulfonic acid (AMdiS) completely prevented subsequent fluorescein maleimide labeling of F₀c A40C (Fig. 6 B, lane 4), whereas F₀c A79C could still be labeled after AMdiS pretreatment (Fig. 6 B, lane 4). Five independent experiments yielded an averaged labeling efficiency of ~60%. When the proteoliposomes were solubilized in detergent before incubation with AMdiS, subsequent labeling of F₀c A79C with fluorescein maleimide was not possible (unpublished data). These results indicate that the cytoplasmic loop of F₀c is indeed localized on the outside, whereas the COOH terminus has been translocated into lumen of the proteoliposomes. These data show that the F₀c has acquired the correct membrane topology after YidC-mediated insertion into proteoliposomes.

F₀c inserted into YidC proteoliposomes oligomerizes into large complexes

In vivo, F₀c subunits assemble into a ring-like structure that is part of the rotor domain of F₁F₀ ATP synthase (Capaldi and Aggeler, 2002). Therefore, we asked if in vitro-synthesized F₀c inserted into YidC proteoliposomes forms large oligomeric complexes as well. First, an insertion reaction, as described earlier in this paper, was performed. Subsequently, the proteoliposomes were reisolated from the reaction mixture, solubilized under mild conditions, and subjected to Blue Native PAGE (Fig. 6 D). Radioactively labeled F₀c was indeed detected almost exclusively in a distinct high mol wt complex with a molecular mass of ~80–100 kD after insertion into YidC proteoliposomes (Fig. 6 D, lane 2). These data demonstrate that membrane-inserted F₀c is competent for oligomerization.

Discussion

About 30% of all structural genes in *E. coli* encode membrane proteins. These proteins have to be targeted to the membrane, inserted into the lipid bilayer, and correctly folded, and some of them have to be assembled into sophisticated supramolecular complexes. Examples of such complexes are the major energy-transducing membrane protein complexes such as the redox-driven proton pump cytochrome *o* oxidase or the PMF-driven mechanoenzyme F₁F₀ ATP synthase. Little is known about folding of membrane proteins and complex assembly, but it has been well established that the majority of membrane proteins is targeted via the SRP pathway to the SecYEG translocase, where membrane insertion takes place (De Gier and Luirink, 2001). In contrast, two special membrane proteins turned out to have completely different requirements for their insertion. The small bacteriophage proteins M13 procoat and Pf3 coat do not need the SRP pathway (De Gier et al., 1998; Chen et al., 2002) or SecYEG (Geller and Wickner, 1985; Kiefer and Kuhn, 1999) to become integrated into the membrane, but

they depend on YidC in vivo (Samuelson et al., 2000; Chen et al., 2002). These two proteins do not stably integrate into the membrane, but in a second step assemble into the phage coat at the extracellular surface of the membrane (Russel et al., 1997). In vitro, they insert into protein-free liposomes with low efficiency (Geller and Wickner, 1985; Ridder et al., 2000; Serek et al., 2004), and their topologically correct insertion is strongly stimulated by the PMF (Date et al., 1980; Kiefer and Kuhn, 1999; Serek et al., 2004). Moreover, it has been shown that nascent chains of Pf3 coat can be cross-linked to YidC, but not SecY (Chen et al., 2002). These data indicate that in *E. coli*, an alternative membrane protein insertion pathway exists in which YidC plays a key role. Recently, Serek et al. (2004) demonstrated that Pf3 coat can be incorporated into YidC proteoliposomes in vitro, indicating that YidC functions as an individual membrane protein insertase. However, the YidC requirement of the phage proteins M13 procoat and Pf3 coat does not explain why YidC is an essential protein for *E. coli*. Other proteins that have been shown to strictly require YidC in vivo are artificial fusion proteins (Fröderberg et al., 2003; Yi et al., 2003) or membrane proteins that have been modified by epitope tags that can alter their membrane insertion pathways (Facey and Kuhn, 2003).

The first step toward the discovery of the native substrates of YidC was the observation that YidC-depleted IMVs contain strongly reduced amounts of cytochrome *o* oxidase and F₁F₀ ATP synthase (van der Laan et al., 2003), two major energy-transducing membrane protein complexes. In the case of F₁F₀ ATP synthase, the amount of the small ring-forming F₀c protein was especially affected. Here, we show by means of in vitro insertion experiments that YidC alone mediates the membrane integration of F₀c. Proteoliposomes containing only YidC catalyze efficient F₀c insertion. Although F₀c shows some spontaneous insertion into liposomes, reconstituted YidC dramatically stimulates F₀c integration into proteoliposomes. At all YidC concentrations tested, co-reconstitution of the SecYEG complex has no effect on the insertion efficiency, indicating that the Sec translocase is not required for membrane integration of F₀c.

It has been shown that membrane partitioning of M13 and Pf3 coat occurs in the absence of a PMF, but that the proteins do not acquire their native topology under these conditions (Date et al., 1980; Chen et al., 2002). Insertion of F₀c does not depend on the PMF. We demonstrate by cysteine accessibility experiments that the COOH terminus of the protein, which is located in the periplasm in vivo, is translocated into YidC proteoliposomes, as it is protected from labeling with a membrane-impermeable probe. In contrast, the cytoplasmic loop connecting the two transmembrane helices remains accessible on the outer surface of the proteoliposomes. Thus, the final topology of F₀c differs from M13 procoat and Pf3 coat. Although with M13 procoat the hydrophilic loop must be translocated across the membrane, the corresponding domain of F₀c remains cytosolic. The first step in the membrane insertion of both M13 procoat and F₀c might be the binding to the membrane surface mediated by electrostatic interactions with charged phospholipid headgroups. Presumably, the three positive charges in the cytosolic loop of F₀c then prevent membrane

translocation, and partitioning of the hydrophobic transmembrane domains into the lipid bilayer is assisted by YidC. The short NH₂-terminal, periplasmic tail of F₀c contains two negative charges. However, a possible electrophoretic contribution to their translocation is obviously not required. Interestingly, stepwise readdition of charged amino acids into an uncharged Pf3 variant (Pf3-4N) demonstrated that negatively charged residues in the periplasmic NH₂-terminal domain show a clear electrophoretic response only when the hydrophobicity of the transmembrane segment is limiting (Kiefer and Kuhn, 1999). However, F₀c is a very hydrophobic protein. This could explain why YidC-mediated hydrophobic interactions seem to be the sole driving force for F₀c membrane insertion.

It has been established that the YidC-dependent proteins M13 procoat and Pf3 do not require the SRP-targeting pathway to become inserted into the membrane (De Gier et al., 1998; Chen et al., 2002). Consistently, we now demonstrate by two independent approaches, i.e., the *in vitro* depletion of FtsY and *in vivo* depletion of Ffh, that inactivation of the SRP pathway has no effect on the insertion of the physiological YidC substrate F₀c into both IMVs and YidC proteoliposomes. Although an SRP requirement was not observed, proteoliposomes have to be present cotranslationally. Recently, a direct interaction between mitochondrial ribosomes and the YidC homologue Oxa1p has been reported (Jia et al., 2003; Szyrach et al., 2003). YidC lacks the COOH-terminal cytosolic domain that is required for ribosome binding to Oxa1p (Jia et al., 2003). So far, there is no evidence for a direct coupling between translation and membrane insertion of F₀c. However, it seems likely that a very hydrophobic protein like F₀c quickly aggregates in the absence of membranes, and this may complicate the post-translational insertion reaction, as the time window between translation and membrane insertion of such small membrane proteins is probably very short *in vivo*. In this respect, F₀c does not seem to differ much from M13 procoat, a protein of similar length that also does not require SRP for membrane targeting.

Our data represent the first direct demonstration of a physiologically important catalytic activity of YidC, which casts a light on the essential role of YidC in *E. coli*. We have functionally reconstituted a novel membrane protein insertion pathway, and we have shown that the F₀c protein is a substrate of it. Viruses and phages generally make use of key biogenesis pathways of their host cells in order to assure their own propagation. For the assembly of filamentous phages like M13 and Pf3, the accumulation of coat proteins in the cytoplasmic membrane of the host is an essential step. It now appears that M13 and Pf3 make use of a cellular machinery that plays a central role in the biogenesis of major energy-transducing membrane protein complexes like F₁F₀ ATP synthase. The mechanism of YidC-mediated membrane protein integration remains to be elucidated. Classical protein translocation and insertion machineries like Sec or Tat translocases use ATP and/or the PMF as energy sources to actively transport proteins or domains of proteins across the membrane. In contrast, no PMF requirement was found for the YidC-mediated insertion of F₀c, and YidC contains no obvious conserved nucleotide-binding domain.

It has been suggested that the function of YidC might be analogous to a chaperone that stabilizes folding and assembly intermediates of membrane proteins or membrane protein complexes. Remarkably, all three substrates of the YidC pathway are small and very hydrophobic proteins that assemble into large oligomeric structures like the phage coat or the rotor ring of the F₁F₀ ATP synthase. The mechanisms of assembly may be vastly different. However, phage coat assembly takes place at the outer surface of the inner membrane, and the final oligomer is not a membrane-inserted complex. Also, substrates of Oxa1, like Cox2p (He and Fox, 1997), and Alb3, like light-harvesting complex protein (Moore et al., 2000), are part of energy-transducing membrane protein complexes. YidC could play an important role as a chaperone in the assembly of these complexes. It might stabilize the transmembrane topology of a single F₀c or act as a platform on which subunits can accumulate and organize into a ring structure. This ring is a very rigid complex (Arechaga et al., 2002). However, some intermediates in the process of complex formation might have to be stabilized by YidC. The role of YidC as well as the Sec translocase in the membrane insertion of other F₀ subunits is unclear. Yi et al. (2003) have reported that the polytopic subunit F₀a also requires YidC to become integrated into the membrane. However, F₀a is known to be unstable in the absence of F₀c, so that the F₀a insertion defect might be at least partly indirect (Hermolin and Fillingame, 1995).

The reconstituted system described here will be a valuable tool in the detailed analysis of YidC-mediated membrane protein integration. Important questions are where the initial interaction of YidC with its substrates takes place, and how binding to and release from YidC are regulated. To understand the role of YidC in the formation of membrane protein complexes, the reconstituted assay described in this paper should be expanded to all subunits of the F₀ complex, e.g., by combination with the reconstitution of Sec-dependent membrane protein insertion on which we have recently reported (van der Laan et al., 2004). This will be a challenge for future analyses.

Materials and methods

Strains and plasmids

Wild-type IMVs were prepared from *E. coli* SF100 (Baneyx and Georgiou, 1990), which was also used for overexpression of SecYEG (van der Does et al., 1996) and YidC (van der Laan et al., 2001). Strain JS7131 (Samuelson et al., 2000) was used to obtain YidC-depleted IMVs. Strain MC4100 was used to obtain S135 lysate. Strain HDB51 (Lee and Bernstein, 2001) was used to prepare Ffh-depleted and wild-type control lysate. Plasmid pBSKftsQ (van der Laan et al., 2004) was used for *in vitro* transcription of *ftsQ*. For *in vitro* transcription of *atpE*, the gene encoding the F₀c protein, plasmid pET20atpE was constructed. *atpE* was PCR amplified from pBWU13 (Iwamoto et al., 1991) and cloned into pET20b (Novagen), yielding pET20atpE. pET20atpE-A40C and pET20atpE-A79C for the *in vitro* synthesis of F₀c single-cysteine derivatives were constructed by replacing the GCG codon at position 40 or position 79 of *atpE*, respectively, with a TGC codon. Plasmid pBWU13 was provided by K. Altendorf and G. Deckers-Hebestreit (University of Osnabrück, Osnabrück, Germany). Strain HDB51 was obtained from J. Luirink (Free University Amsterdam, Amsterdam, Netherlands).

Depletion of YidC and Ffh

Depletion of YidC and Ffh was performed essentially as described by Nouwen et al. (2001) for SecDFyajC. For YidC depletion, an overnight culture *E. coli* JS7131 grown in Luria-Bertoni (LB) medium supplemented with 0.2% (wt/vol) arabinose and 25 μg/ml spectinomycin was diluted 1:100

into the same medium without the antibiotic and grown until an OD₆₆₀ of 0.8. Wild-type IMVs were prepared from these cells. A part of the same culture was washed once with warm LB and resuspended in LB containing 0.2% (wt/vol) glucose at an OD₆₆₀ of 0.4. After every generation, the culture was diluted with 1 vol of the same medium until the cells stopped growing. YidC-depleted IMVs were prepared from this culture. *E. coli* HDB51 was grown overnight in LB with 25 µg/ml kanamycin, 10 µg/ml tetracycline, 100 µg/ml ampicillin, and 0.2% (wt/vol) arabinose. Cells were diluted 1:200 into the same medium without antibiotic and grown until an OD₆₆₀ of 0.2. HDB51 wild-type lysate was prepared from these cells. Depletion of Ffh was induced in the same way as described for YidC, with the exception that cells were initially resuspended at an OD₆₆₀ of 0.1.

Proteinase K pretreatment of IMVs

To inactivate membrane proteins, IMVs were treated with 0.2 mg/ml proteinase K for 20 min on ice. Proteinase K activity was subsequently blocked by the addition of 0.5 mM PMSF, and IMVs were collected by centrifugation through a cushion consisting of 50 mM Hepes-KOH, pH 7.5, 0.5 mM PMSF, and 20% (wt/vol) sucrose. IMVs were washed with 50 mM Hepes-KOH, pH 7.5, and resuspended in 50 mM Hepes-KOH, pH 7.5, and 20% glycerol. Control IMVs were subjected to the same treatment, with the exception that proteinase K was left out.

In vitro transcription, translation, and insertion reaction

The RiboMAX™ in vitro transcription kit (Promega) was used for the synthesis of mRNA. Plasmids pBSKftsQ (FtsQ), pET20atpE (wild-type F₀c), pET20atpE-A40C (F₀c A40C, containing a unique cysteine residue at position 40), or pET20atpE-A79C (F₀c A79C, containing a unique cysteine at position 79), respectively, served as DNA templates. In vitro translation–insertion reactions were performed for 20 min at 37°C in the presence of the indicated amounts of IMVs or (proteo-)liposomes as described previously (van der Laan et al., 2004).

Labeling of F₀c A40C and F₀c A79C

To determine the transmembrane topology of in vitro–synthesized and membrane-inserted F₀c, translation reactions using F₀c A40C or F₀c A79C mRNAs and YidC proteoliposomes were performed in the absence of any radioactively labeled amino acid. Subsequently, 0.4 mg/ml protease K was added to degrade nonincorporated F₀c. After 30 min on ice, 0.5 mM PMSF was added to block proteinase K activity. Proteoliposomes were isolated from the reaction mixture by centrifugation through a cushion consisting of 50 mM Hepes-KOH, pH 7.0, 50 mM KCl, and 20% (wt/vol) glycerol. Membranes were resuspended in 50 mM Hepes-KOH, pH 7.0, and 50 mM KCl, and were incubated for 10 min on ice in the presence or absence of 0.5 mM AMdiS (Molecular Probes, Inc.) as indicated. Subsequently, 1 mM fluorescein maleimide (Molecular Probes, Inc.) was added, and incubation was continued for another 10 min. Labeling reactions were quenched with 5 mM DTT and samples were subjected to precipitation with TCA. Samples were analyzed by 17.5% SDS-PAGE, and fluorescently labeled proteins were visualized using a Lumi-Imager F1 workstation (Roche).

Oligomerization of in vitro–synthesized F₀c

F₀c was synthesized as radioactively labeled protein in the presence of proteoliposomes containing either YidC, SecYEG together with YidC, or with no proteins. 0.4 mg/ml proteinase K was added and samples were incubated for 30 min on ice to degrade noninserted F₀c. 0.5 mM PMSF was used to inactivate proteinase K, and F₀c-loaded proteoliposomes were isolated by centrifugation through a cushion consisting of 50 mM Hepes-KOH, pH 8.0, 50 mM KCl, and 20% (vol/vol) sucrose. Pellets were resuspended in 50 µl solubilization buffer (50 mM Hepes, pH 8.0, 50 mM KCl, 20% glycerol, and 0.05% dodecyl maltoside) and were incubated for 15 min on ice. Subsequently, samples were mixed with gel-loading buffer. Blue Native PAGE analysis was performed on 8–18% gradient gels as described previously (Schägger and von Jagow, 1991).

Other methods

SecYEG (Manting et al., 2000) and YidC (van der Laan et al., 2001) were purified as described. Reconstitutions were performed as described previously (van der Laan et al., 2001). Where indicated, SecA or FtsY was removed from the lysate by immunodepletion (van der Laan et al., 2004); depletion was verified by immunoblotting. ProOmpA translocation experiments were performed for 20 min at 37°C using fluorescently labeled precursor protein (De Keyzer et al., 2002).

which is subsidized by the Netherlands Organization for Scientific Research (program grant 809.65.012).

Submitted: 18 February 2004

Accepted: 17 March 2004

References

- Ackerman, S.H. 2002. Atp11p and Atp12p are chaperones for F₁-ATPase biogenesis in mitochondria. *Biochim. Biophys. Acta.* 1555:101–105.
- Ackerman, S.H., and A. Tzagoloff. 1990. *ATP10*, a yeast nuclear gene required for the assembly of the mitochondrial F₁F₀ complex. *J. Biol. Chem.* 265: 9952–9959.
- Altamura, N., N. Capitanio, N. Bonnefoy, S. Papa, and G. Dujardin. 1996. The *Saccharomyces cerevisiae OXA1* gene is required for the correct assembly of cytochrome *c* oxidase and oligomycin-sensitive ATP synthase. *FEBS Lett.* 382:111–115.
- Arechaga, I., P.J.G. Butler, and J.E. Walker. 2002. Self-assembly of ATP synthase subunit c rings. *FEBS Lett.* 515:189–193.
- Baneyx, F., and G. Georgiou. 1990. In vivo degradation of secreted fusion proteins by the *Escherichia coli* outer membrane protease OmpT. *J. Bacteriol.* 172: 491–494.
- Bauer, M., M. Behrens, K. Esser, G. Michaelis, and E. Pratje. 1994. *PET1402*, a nuclear gene required for proteolytic processing of cytochrome oxidase subunit 2 in yeast. *Mol. Gen. Genet.* 245:272–278.
- Beck, K., G. Eisner, D. Trescher, R.E. Dalbey, J. Brunner, and M. Müller. 2001. YidC, an assembly site for polytopic *Escherichia coli* membrane proteins located in immediate proximity to the SecYE translocon and lipids. *EMBO Rep.* 2:709–714.
- Capaldi, R.A., and R. Aggeler. 2002. Mechanism of the F₁F₀-type ATP synthase, a biological rotary motor. *Trends Biochem. Sci.* 27:154–160.
- Carr, H.S., and D.R. Winge. 2003. Assembly of cytochrome *c* oxidase within the mitochondrion. *Acc. Chem. Res.* 36:309–316.
- Chen, M., J.C. Samuelson, F. Jiang, M. Müller, A. Kuhn, and R.E. Dalbey. 2002. Direct interaction of YidC with the Sec-independent Pf3 coat protein during its membrane protein insertion. *J. Biol. Chem.* 277:7650–7675.
- Date, T., J.M. Goodman, and W.T. Wickner. 1980. Procoat, the precursor of M13 coat protein, requires an electrochemical potential for membrane insertion. *Proc. Natl. Acad. Sci. USA.* 77:4669–4673.
- De Gier, J.W., and J. Luirink. 2001. Biogenesis of inner membrane proteins in *Escherichia coli*. *Mol. Microbiol.* 40:314–322.
- De Gier, J.W., P.A. Scotti, A. Saaf, Q.A. Valent, A. Kuhn, J. Luirink, and G. von Heijne. 1998. Differential use of the signal recognition particle translocase targeting pathway for inner membrane protein assembly in *Escherichia coli*. *Proc. Natl. Acad. Sci. USA.* 95:14646–14651.
- De Keyzer, J., C. van der Does, and A.J. Driessen. 2002. Kinetic analysis of the translocation of fluorescent precursor proteins into *Escherichia coli* membrane vesicles. *J. Biol. Chem.* 277:46059–46065.
- Facey, S.J., and A. Kuhn. 2003. The sensor protein KdpD inserts into the *Escherichia coli* membrane independent of the Sec translocase and YidC. *Eur. J. Biochem.* 270:1724–1734.
- Fröderberg, L., E. Houben, J.C. Samuelson, M. Chen, S.K. Park, G.J. Phillips, R. Dalbey, J. Luirink, and J.W. de Gier. 2003. Versatility of inner membrane protein biogenesis in *Escherichia coli*. *Mol. Microbiol.* 47:1015–1027.
- Geller, B.L., and W. Wickner. 1985. M13 procoat inserts into liposomes in the absence of other membrane proteins. *J. Biol. Chem.* 260:13281–13285.
- Girvin, M.E., V.K. Rastogi, F. Abildgaard, J.L. Markley, and R.H. Fillingame. 1998. Solution structure of the transmembrane H⁺-transporting subunit c of the F₁F₀ ATP synthase. *Biochemistry.* 37:8817–8824.
- He, S., and T.D. Fox. 1997. Membrane translocation of mitochondrially coded Cox2p: distinct requirements for export of N and C termini and dependence on the conserved protein Oxa1p. *Mol. Biol. Cell.* 8:1449–1460.
- Hermolin, J., and R.H. Fillingame. 1995. Assembly of F₀ sector of *Escherichia coli* H⁺-ATP synthase. *J. Biol. Chem.* 270:2815–2817.
- Herrmann, J.M., W. Neupert, and R.A. Stuart. 1997. Insertion into the mitochondrial inner membrane of a polytopic protein, the nuclear-encoded Oxa1p. *EMBO J.* 16:2217–2226.
- Herskovits, A.A., E.S. Bochkareva, and E. Bibi. 2000. New prospects in studying the bacterial signal recognition particle pathway. *Mol. Microbiol.* 38:927–939.
- Houben, E.N., P.A. Scotti, Q.A. Valent, J. Brunner, J.L. de Gier, B. Oudega, and J. Luirink. 2000. Nascent Lep inserts into the *Escherichia coli* inner membrane in the vicinity of YidC, SecY and SecA. *FEBS Lett.* 476:229–233.

We would like to thank Eli van der Sluis for critically reading the manuscript. This work was supported by the Earth and Life Sciences Foundation,

- Iwamoto, A., H. Omote, H. Yanada, N. Tomioka, A. Itai, M. Maeda, and M. Futai. 1991. Mutations in Ser174 and the glycine-rich sequence (Gly149, Gly150, and Thr156) in the β subunit of *Escherichia coli* H⁺-ATPase. *J. Biol. Chem.* 266:16350–16355.
- Jia, L., M. Dienhart, M. Schrap, M. McCauley, K. Hell, and R.A. Stuart. 2003. Yeast Oxa1 interacts with mitochondrial ribosomes: the importance of the C-terminal region of Oxa1. *EMBO J.* 22:6438–6447.
- Kiefer, D., and A. Kuhn. 1999. Hydrophobic forces drive spontaneous membrane insertion of the bacteriophage Pf3 coat protein without topological control. *EMBO J.* 18:6299–6306.
- Kuhn, A., R.A. Stuart, R. Henry, and R.E. Dalbey. 2003. The Alb3/Oxa1/YidC protein family: membrane-localized chaperones facilitating membrane protein insertion? *Trends Cell Biol.* 13:510–516.
- Lee, H.C., and H.D. Bernstein. 2001. The targeting pathway of *Escherichia coli* presecretory and integral membrane proteins is specified by the hydrophobicity of the targeting signal. *Proc. Natl. Acad. Sci. USA.* 98:3471–3476.
- Manting, E.H., C. van Der Does, H. Remigy, A. Engel, and A.J. Driessen. 2000. SecYEG assembles into a tetramer to form the active protein translocation channel. *EMBO J.* 19:852–861.
- Moore, M., M.S. Harrison, E.C. Peterson, and R. Henry. 2000. Chloroplast Oxa1p homolog albino3 is required for post-translational integration of the light harvesting chlorophyll-binding protein into thylakoid membranes. *J. Biol. Chem.* 275:1529–1532.
- Moore, M., R.L. Goforth, H. Mori, and R. Henry. 2003. Functional interaction of chloroplast SRP/FtsY with the ALB3 translocase in thylakoids: substrate not required. *J. Cell Biol.* 162:1245–1254.
- Nouwen, N., M. van der Laan, and A.J. Driessen. 2001. SecDFyajC is not required for the maintenance of the proton motive force. *FEBS Lett.* 508:103–106.
- Ridder, A.N., S. Morein, J.G. Stam, A. Kuhn, B. de Kruijff, and J.A. Killian. 2000. Analysis of the role of interfacial tryptophan residues in controlling the topology of membrane proteins. *Biochemistry.* 39:6521–6528.
- Russel, M., N.A. Linderth, and A. Sali. 1997. Filamentous phage assembly: variations on a protein export theme. *Gene.* 192:23–32.
- Samuelson, J.C., M. Chen, F. Jiang, I. Möller, M. Wiedmann, A. Kuhn, G.J. Phillips, and R.E. Dalbey. 2000. YidC mediates membrane protein insertion in bacteria. *Nature.* 406:637–641.
- Schägger, H., and G. von Jagow. 1991. Blue native electrophoresis for isolation of membrane protein complexes in enzymatically active form. *Anal. Biochem.* 199:223–231.
- Scotti, P.A., M.L. Urbanus, J. Brunner, J.W. de Gier, G. von Heijne, C. van der Does, A.J. Driessen, B. Oudega, and J. Luirink. 2000. YidC, the *Escherichia coli* homologue of mitochondrial Oxa1p, is a component of the Sec translocase. *EMBO J.* 19:542–549.
- Serek, J., G. Bauer-Manz, G. Struhalla, L. Van Den Berg, D. Kiefer, R.E. Dalbey, and A. Kuhn. 2004. *Escherichia coli* YidC is a membrane insertase for Sec-independent proteins. *EMBO J.* 23:294–301.
- Stuart, R.A. 2002. Insertion of proteins into the inner membrane of mitochondria: the role of the Oxa1 complex. *Biochim. Biophys. Acta.* 1592:79–87.
- Szyrach, G., M. Ott, N. Bonnefoy, W. Neupert, and J.M. Herrmann. 2003. Ribosome binding to the Oxa1 complex facilitates co-translational protein insertion in mitochondria. *EMBO J.* 22:6448–6457.
- van der Does, C., T. den Blaauwen, J.G. de Wit, E.H. Manting, N.A. Groot, P. Fekkes, and A.J. Driessen. 1996. SecA is an intrinsic subunit of the *Escherichia coli* preprotein translocase and exposes its carboxyl terminus to the periplasm. *Mol. Microbiol.* 22:619–629.
- van der Laan, M., E.N. Houben, N. Nouwen, J. Luirink, and A.J. Driessen. 2001. Reconstitution of Sec-dependent membrane protein insertion: nascent FtsQ interacts with YidC in a SecYEG-dependent manner. *EMBO Rep.* 2:519–523.
- van der Laan, M., M.L. Urbanus, C.M. ten Hagen-Jongman, N. Nouwen, B. Oudega, N. Harms, A.J. Driessen, and J. Luirink. 2003. A conserved function of YidC in the biogenesis of respiratory chain complexes. *Proc. Natl. Acad. Sci. USA.* 100:5801–5806.
- van der Laan, M., N. Nouwen, and A.J. Driessen. 2004. SecYEG proteoliposomes catalyze the $\Delta\psi$ -dependent membrane insertion of FtsQ. *J. Biol. Chem.* 279:1659–1664.
- Weber, J., and A.E. Senior. 2003. ATP synthesis driven by proton transport in F₁F₀-ATP synthase. *FEBS Lett.* 545:61–70.
- Yi, L., F. Jiang, M. Chen, B. Cain, A. Bolhuis, and R.E. Dalbey. 2003. YidC is strictly required for membrane insertion of subunits a and c of the F₁F₀ ATP synthase and SecE of the SecYEG translocase. *Biochemistry.* 42:10537–10544.