

University of New Hampshire

University of New Hampshire Scholars' Repository

Faculty Publications

11-18-2021

Relating geostationary satellite measurements of aerosol optical depth (AOD) over East Asia to fine particulate matter (PM_{2.5}): Insights from the KORUS-AQ aircraft campaign and GEOS-Chem model simulations

Shixian Zhai
Harvard University

Daniel J. Jacob
Harvard University

Jared F. Brewer
Harvard University

Ke Li
Harvard University

Jonathan M. Moch
Harvard University

Follow this and additional works at: https://scholars.unh.edu/faculty_pubs

See next page for additional authors

Recommended Citation

Zhai, S., D. J. Jacob, J. F. Brewer, K. Li, J. M. Moch, J. Kim, S. Lee, H. Lim, H. C. Lee, S. K. Kuk, R. J. Park, J. I. Jeong, X. Wang, P. Liu, G. Luo, F. Yu, J. Meng, R. V. Martin, K. R. Travis, J. W. Hair, B. E. Anderson, J. E. Dibb, J. L. Jimenez, P. Campuzano-Jost, B. A. Nault, J.-H. Woo, Y. Kim, Q. Zhang, and H. Liao (2021), Relating geostationary satellite measurements of aerosol optical depth (AOD) over East Asia to fine particulate matter (PM_{2.5}): Insights from the KORUS-AQ aircraft campaign and GEOS-Chem model simulations, *Atmospheric Chemistry and Physics*, 21, 16,775-16,791, <https://doi.org/10.5194/acp-21-16775-2021>.

This Article is brought to you for free and open access by University of New Hampshire Scholars' Repository. It has been accepted for inclusion in Faculty Publications by an authorized administrator of University of New Hampshire Scholars' Repository. For more information, please contact Scholarly.Communication@unh.edu.

Authors

Shixian Zhai, Daniel J. Jacob, Jared F. Brewer, Ke Li, Jonathan M. Moch, Jhoon Kim, Seoyoung Lee, Hyunkwang Lim, Hyun Chul Lee, Su Keun Kuk, Rokjin J. Park, Jaein I. Jeong, Xuan Wang, Pengfei Liu, Gan Luo, Fangqun Yu, Jun Meng, Randall V. Martin, Katherine R. Travis, Johnathan W. Hair, Bruce E. Anderson, Jack E. Dibb, Jose L. Jimenez, Pedro Campuzano-Jost, and et al.



Relating geostationary satellite measurements of aerosol optical depth (AOD) over East Asia to fine particulate matter (PM_{2.5}): insights from the KORUS-AQ aircraft campaign and GEOS-Chem model simulations

Shixian Zhai¹, Daniel J. Jacob¹, Jared F. Brewer¹, Ke Li¹, Jonathan M. Moch¹, Jhoon Kim^{2,3}, Seoyoung Lee², Hyunkwang Lim², Hyun Chul Lee³, Su Keun Kuk³, Rokjin J. Park⁴, Jaemin I. Jeong⁴, Xuan Wang⁵, Pengfei Liu⁶, Gan Luo⁷, Fangqun Yu⁷, Jun Meng⁸, Randall V. Martin⁹, Katherine R. Travis¹⁰, Johnathan W. Hair¹⁰, Bruce E. Anderson¹⁰, Jack E. Dibb¹¹, Jose L. Jimenez¹², Pedro Campuzano-Jost¹², Benjamin A. Nault^{12,a}, Jung-Hun Woo¹³, Younha Kim¹⁴, Qiang Zhang¹⁵, and Hong Liao¹⁶

¹Harvard John A. Paulson School of Engineering and Applied Sciences, Harvard University, Cambridge, MA, USA

²Department of Atmospheric Sciences, Yonsei University, Seoul, Republic of Korea

³Samsung Particulate Matter Research Institute, Samsung Advanced Institute of Technology, 130 Samsung-ro, Yeongtong-gu, Suwon-si, Gyeonggi-do, Republic of Korea

⁴School of Earth and Environmental Sciences, Seoul National University, Seoul, Republic of Korea

⁵School of Energy and Environment, City University of Hong Kong, Hong Kong SAR, China

⁶School of Earth and Atmospheric Sciences, Georgia Institute of Technology, Atlanta, GA, USA

⁷Atmospheric Sciences Research Center, University at Albany, Albany, New York, USA

⁸Department of Atmospheric and Oceanic Sciences, University of California, Los Angeles, California, USA

⁹Department of Energy, Environmental and Chemical Engineering, Washington University in St. Louis, St. Louis, MO, USA

¹⁰NASA Langley Research Center, Hampton, VA, USA

¹¹Institute for the Study of Earth, Oceans, and Space, University of New Hampshire, Durham, NH, USA

¹²Department of Chemistry, Cooperative Institute for Research in Environmental Sciences, University of Colorado, Boulder, CO, USA

¹³Department of Civil and Environmental Engineering, Konkuk University, Seoul, Republic of Korea

¹⁴International Institute for Applied Systems Analysis (IIASA), 2361 Laxenburg, Austria

¹⁵Department of Earth System Science, Tsinghua University, Beijing, China

¹⁶Jiangsu Key Laboratory of Atmospheric Environment Monitoring and Pollution Control, Collaborative Innovation Center of Atmospheric Environment and Equipment Technology, School of Environmental Science and Engineering, Nanjing University of Information Science and Technology, Nanjing, China

^anow at: Center for Aerosol and Cloud Chemistry, Aerodyne Research, Inc., Billerica, MA, USA

Correspondence: Shixian Zhai (zhaisx@g.harvard.edu)

Received: 17 May 2021 – Discussion started: 27 July 2021

Revised: 16 October 2021 – Accepted: 19 October 2021 – Published: 18 November 2021

Abstract. Geostationary satellite measurements of aerosol optical depth (AOD) over East Asia from the Geostationary Ocean Color Imager (GOCI) and Advanced Himawari Imager (AHI) instruments can augment surface monitoring of fine particulate matter (PM_{2.5}) air quality, but this requires better understanding of the AOD–PM_{2.5} relationship. Here we use the GEOS-Chem chemical transport model to analyze the critical variables determining the AOD–PM_{2.5} relationship over East Asia by simulation of observations from satellite, aircraft, and ground-based datasets. This includes the detailed vertical aerosol profiling over South Korea from the KORUS-AQ aircraft campaign (May–June 2016) with concurrent ground-based PM_{2.5} composition, PM₁₀, and AERONET AOD measurements. The KORUS-AQ data show that 550 nm AOD is mainly contributed by sulfate–nitrate–ammonium (SNA) and organic aerosols in the planetary boundary layer (PBL), despite large dust concentrations in the free troposphere, reflecting the optically effective size and high hygroscopicity of the PBL aerosols. We updated SNA and organic aerosol size distributions in GEOS-Chem to represent aerosol optical properties over East Asia by using in situ measurements of particle size distributions from KORUS-AQ. We find that SNA and organic aerosols over East Asia have larger size (number median radius of 0.11 μm with geometric standard deviation of 1.4) and 20 % larger mass extinction efficiency as compared to aerosols over North America (default setting in GEOS-Chem). Although GEOS-Chem is successful in reproducing the KORUS-AQ vertical profiles of aerosol mass, its ability to link AOD to PM_{2.5} is limited by under-accounting of coarse PM and by a large overestimate of nighttime PM_{2.5} nitrate. The GOCI–AHI AOD data over East Asia in different seasons show agreement with AERONET AODs and a spatial distribution consistent with surface PM_{2.5} network data. The AOD observations over North China show a summer maximum and winter minimum, opposite in phase to surface PM_{2.5}. This is due to low PBL depths compounded by high residential coal emissions in winter and high relative humidity (RH) in summer. Seasonality of AOD and PM_{2.5} over South Korea is much weaker, reflecting weaker variation in PBL depth and lack of residential coal emissions.

1 Introduction

PM_{2.5} (particulate matter with aerodynamic diameter less than 2.5 μm) in surface air is a severe public health concern in East Asia, but surface monitoring networks are too sparse to thoroughly assess population exposure. Satellite observations of aerosol optical depth (AOD) can provide a valuable complement (van Donkelaar et al., 2015). Geostationary satellite sensors, including the Geostationary Ocean Color Imager (GOCI) launched by the Korea Aerospace Research Institute (KARI) in 2011 (M. Choi et al., 2016, 2018,

2019) and the Advanced Himawari Imager (AHI) launched by the Japanese Meteorological Agency (JMA) in 2014 (Lim et al., 2018, 2021), offer the potential for high-density mapping of PM_{2.5} over East Asia (Chen et al., 2019; Wei et al., 2021a). However, more confidence is needed in relating AOD to PM_{2.5}. Here we evaluate the capability of the GEOS-Chem chemical transport model (CTM) to simulate AOD–PM_{2.5} relationships over East Asia, exploiting in situ aircraft measurements of vertical aerosol profiles and optical properties from the joint NASA–NIER Korea–United States Air Quality (KORUS-AQ) field study in May–June 2016 (Crawford et al., 2021; Peterson et al., 2019; Jordan et al., 2020) together with GOCI–AHI geostationary satellite data and surface measurement networks. This enables us to identify critical variables and uncertainties for inferring PM_{2.5} from satellite AOD data.

A number of past studies have used satellite AOD data to infer surface PM_{2.5} using physical and statistical models. The standard geophysical approach has been to use a CTM, such as GEOS-Chem, to compute the PM_{2.5} / AOD ratio (Liu et al., 2004; van Donkelaar et al., 2006, 2015; Xu et al., 2015; Geng et al., 2017), with recent applications correcting for CTM biases using available PM_{2.5} surface network data (Brauer et al., 2016; van Donkelaar et al., 2016, 2019; Hammer et al., 2020). An alternative approach is to use artificial intelligence algorithms to relate satellite AOD to PM_{2.5} by training on the surface network data (Hu et al., 2017; Chen et al., 2018; Xiao et al., 2018; Wei et al., 2021a; Wei et al., 2021b; Pendergrass et al., 2021) and sometimes including CTM values as predictors (Di et al., 2019; Xue et al., 2019). Yet another approach is to assimilate the satellite-measured AODs in a CTM and correct in this manner the PM_{2.5} simulation, although this requires attribution of model AOD errors to specific model parameters (Kumar et al., 2019; Saide et al., 2014; Sekiyama et al., 2010; Cheng et al., 2019). In all of these approaches, a better physical understanding of the AOD–PM_{2.5} relationship as simulated by CTMs can greatly enhance the capability to infer PM_{2.5} from AOD data.

AOD measures aerosol extinction (scattering and absorption) integrated over the atmospheric column so that its relationship to 24 h average surface PM_{2.5} (the standard air quality metric) depends on the aerosol vertical distribution and optical properties, ambient relative humidity (RH), diurnal variation in PM_{2.5}, and contribution from coarse particulate matter to AOD. Airborne measurements of aerosol vertical profiles (without species information) in East Asia are limited (Zhang et al., 2006; Liu et al., 2009; Zhang et al., 2009; Sun et al., 2013; Li et al., 2017), and speciated vertical profiles are rarer. AOD is highly sensitive to RH (Brock et al., 2016; Latimer and Martin et al., 2019; Saide et al., 2020), but the impact from RH uncertainty on AOD simulation lacks evaluation. In addition, because the AOD is a daytime measurement that needs to be related to 24 h average PM_{2.5}, the diurnal variation in PM_{2.5} needs to be understood (Guo et al., 2017; Lennartson et al., 2018). Finally, although there

Table 1. Surface site observations used in this work (2016).

| Variable | Number of sites |
|---|--------------------|
| PM _{2.5} in East China ^a | 598 |
| PM _{2.5} in South Korea ^b | 130 |
| PM _{2.5} composition in South Korea (May–June 2016) ^c | 7 |
| AERONET total and fine-mode AOD in East China ^d | 5 |
| AERONET total and fine-mode AOD in South Korea ^d | 10–21 ^e |

^a Hourly PM_{2.5} from the China National Environmental Monitoring Centre (CNEMC; <http://www.quotsoft.net/air/>, last access: 12 March 2021) in East China, including only sites with more than 90 % data coverage in each month of 2016. Quality control of the CNEMC dataset is described in our previous study (Zhai et al., 2019). The PM_{2.5} measurements are made at reference RH ≤ 35 %. ^b Hourly PM_{2.5} from the AirKorea network (<https://www.airkorea.or.kr>, last access: 20 April 2021), with the same data selection criteria as for East China. The PM_{2.5} measurements are made at reference RH ≤ 35 %. ^c Major PM_{2.5} components including sulfate, nitrate, ammonium, organic carbon, and black carbon at seven supersites in South Korea during KORUS-AQ (May–June 2016; J. Choi et al., 2019). The mass concentration of organic carbon is converted to that of organic aerosol with a multiplicative factor of 1.8 based on KORUS-AQ observations (Kim et al., 2018). ^d AODs are from the AERONET Version 3 Level 2.0 all-points database (<https://aeronet.gsfc.nasa.gov/>, last access: 23 July 2021), except that AODs at the Xuzhou site in East China are from the Version 3 Level 1.5 database. AOD at 500 nm (AOD_{500nm}) is converted to 550 nm (AOD_{550nm}) using the Ångström exponent at 500 nm (AE_{500nm}) following

$$\text{AOD}_{550\text{nm}} = \text{AOD}_{500\text{nm}} \left(\frac{550}{500} \right)^{-\text{AE}_{500\text{nm}}}$$

^e AERONET AODs in South Korea are from 10 sites for the full year of 2016 and 21 sites during KORUS-AQ.

are studies on the optical depth of coarse-mode desert dust (Eck et al., 2010; Ridley et al., 2016), there has been to our knowledge no study of how coarse anthropogenic PM may contribute to the AOD measurements. Coarse anthropogenic PM (distinct from desert dust) is known to be high over East Asia (Chen et al., 2015; Dai et al., 2018).

2 Data and methods

2.1 Observations

We use observations over China and South Korea from multiple platforms including surface sites, aircraft, and satellites (Tables 1 and 2). Surface data (Table 1) include PM_{2.5} from national observation networks in China (Zhai et al., 2019) and South Korea (Jordan et al., 2020), speciated PM_{2.5} at seven supersites in South Korea during KORUS-AQ (J. Choi et al., 2019), and ground-based AODs from the AERONET network at 5 sites in East China and 10 sites in South Korea (21 sites during KORUS-AQ). We use total and fine-mode AODs at 500 nm wavelength from the AERONET Version 3 spectral deconvolution algorithm (SDA) Version 4.1 Retrieval Level 2.0 database (Giles et al., 2019; O'Neill et al., 2003). The AERONET AODs at 500 nm are converted to 550 nm using total and fine-mode Ångström exponents at 500 nm for consistency with the satellite AOD data.

The KORUS-AQ campaign (Table 2) includes 20 flights over the Korean peninsula and the surrounding ocean from 2 May to 10 June 2016, with vertical profiling up to 8 km altitude. We use the aircraft observations of remote and in situ aerosol extinction (scattering + absorption) coefficients, dry

Table 2. KORUS-AQ aircraft observations used in this work (May–June 2016).

| Variable | Instrument |
|---|--------------------------------|
| Aerosol extinction profile at 532 nm | HSRL ^a |
| Aerosol scattering coefficient at 550 nm | TSI nephelometers ^b |
| Aerosol absorption coefficient at 532 nm | PSAPs ^c |
| Aerosol dry size distribution | TSI LAS ^d |
| Bulk aerosol ionic composition | SAGA ^e |
| Sub-micron non-refractory aerosol composition | HR-ToF-AMS ^f |
| Black carbon concentration | HDSP2 ^g |
| Relative humidity | DLH ^h |

^a NASA Langley airborne high-spectral-resolution lidar (HSRL) (Hair et al., 2008; Scarino et al., 2014). ^b NASA Langley TSI-3563 nephelometers (Ziemba et al., 2013). ^c Radiance Research three-wavelength particle soot absorption photometers (PSAPs; Ziemba et al., 2013). ^d In situ particle size distributions over the 0.1–5.0 μm diameter range from the TSI laser aerosol spectrometer (LAS) Model 3340. ^e University of New Hampshire (UNH) Soluble Acidic Gases and Aerosol (SAGA) instrument (Dibb et al., 2003). The cutoff aerodynamic diameter of the inlet is around 4 μm, corresponding to a geometric particle diameter of 2.5 μm (McNaughton et al., 2007, 2009). ^f University of Colorado Boulder high-resolution time-of-flight aerosol mass spectrometer (HR-ToF-AMS; DeCarlo et al., 2006; Nault et al., 2018; Guo et al., 2021). ^g NOAA humidified dual single particle soot photometer (HDSP2; Lamb et al., 2018). ^h NASA diode laser hygrometer (DLH; Podolske et al., 2003).

aerosol number size distributions, sub-micron non-refractory aerosol composition, bulk aerosol ionic composition, black carbon (BC), and relative humidity (RH).

Geostationary satellite AOD at 550 nm is retrieved by the Yonsei aerosol retrieval (YAER) algorithm for the GOCI (Choi et al., 2016, 2018) and AHI (Lim et al., 2018) instruments, with GOCI covering East China and South Korea and AHI covering the broad East Asia region. AOD from GOCI and AHI has a 6 km × 6 km spatial resolution and 2.5 min (AHI) to 1 h (GOCI) temporal resolution for 8 h per day (09:30 to 16:30 local time). We use the fused AOD product generated from the Yonsei GOCI–AHI AOD retrievals, each using two different surface reflectance methods (Lim et al., 2021). Fusion of this four-member ensemble is done by the maximum likelihood estimate (MLE) method, with weighting and averaging based on errors determined by comparison to AERONET AOD. The fused satellite AOD product is shown by Lim et al. (2021) to have higher accuracy than its member products in comparison with AERONET data during the KORUS-AQ campaign. We refer to it as the “GEO satellite AOD” product in what follows.

2.2 GEOS-Chem simulation

We use GEOS-Chem version 12.7.1 (<https://doi.org/10.5281/zenodo.3676008>) in a nested-grid simulation at a horizontal resolution of 0.5° × 0.625° over East Asia (100–145° E, 20–50° N). GEOS-Chem simulates detailed tropospheric oxidant–aerosol chemistry and is driven here by GEOS-FP-assimilated meteorological data from the NASA Global Modeling and Assimilation Office (GMAO). Boundary layer mixing uses the non-local scheme implemented by Lin and McElroy (2010). Dry deposition of gases and particles follows a standard resistance-in-series scheme (Zhang et al., 2001; Fairlie et al., 2007; Fisher et

al., 2011; Jaeglé et al., 2018). Wet deposition of gases and particles includes contributions from rainout, washout, and scavenging in convective updrafts (Liu et al., 2001; Amos et al., 2012; Q. Wang et al., 2011, 2014) with recent updates by Luo et al. (2019, 2020). We use pre-archived initial conditions from Zhai et al. (2021) and run the model from 1 December 2015 to 31 December 2016. The first month is used for spin-up, and the year 2016 is used for analysis.

GEOS-Chem has been used extensively to simulate $\text{PM}_{2.5}$ and its composition in East Asia (Geng et al., 2017; Li et al., 2016; J. Choi et al., 2019; Jeong et al., 2008; Park et al., 2021; Zhai et al., 2021). Here we use the bulk representation of aerosols including sulfate (Park et al., 2004; Alexander et al., 2009), nitrate (Jaeglé et al., 2018), primary and secondary organic aerosols (Pai et al., 2020), BC (Q. Wang et al., 2014), natural dust in four advected size ranges (Fairlie et al., 2007), anthropogenic fine dust (Philip et al., 2017), and sea salt in two size ranges (Jaeglé et al., 2011). Heterogeneous sulfate formation on aqueous aerosols is represented by a simplified parameterization scheme (Y. Wang et al., 2014), where the SO_2 uptake coefficient (γ) linearly increases from 1×10^{-5} at $\text{RH} \leq 50\%$ to 2×10^{-5} at $\text{RH} = 100\%$. The thermodynamic equilibrium of sulfate–nitrate–ammonium (SNA) aerosols with the gas phase is computed with ISORROPIA II (Fountoukis and Nenes, 2007; Pye et al., 2009), assuming an aqueous aerosol. We include reactive uptake on dust of acid gases (HNO_3 , SO_2 , and H_2SO_4), limited by consumption of dust alkalinity (Fairlie et al., 2010). The alkalinity of emitted dust is estimated by assuming 7.1 % Ca^{2+} and 1.1 % Mg^{2+} as alkaline cations by dust mass (Shah et al., 2020).

Monthly anthropogenic emissions are from the Multi-resolution Emission Inventory in 2016 for China (MEIC; Zheng et al., 2018; <http://meicmodel.org>, last access: 10 November 2021) and from the KORUSv5 emission inventory in base year 2015 (Woo et al., 2020; http://aisl.konkuk.ac.kr/#/emission_data/korus-aq_emissions, last access: 10 November 2021) for other Asian countries and shipping emissions. MEIC over China applies weekly and diurnal scaling factors for all anthropogenic emissions (Zheng et al., 2018). The KORUSv5 agricultural NH_3 emissions apply the diurnal scaling factors from MEIC. Natural emissions include NO_x from lightning (Murray et al., 2012) and soil (Hudman et al., 2012), MEGANv2 biogenic volatile organic compounds (VOCs) (Guenther et al., 2012), dust (Meng et al., 2021), and sea salt (Jaeglé et al., 2011). Open-fire emissions are from the Global Fire Emissions Database version 4 (GFED4; van der Werf et al., 2017).

2.3 AOD simulation

AOD in GEOS-Chem is diagnosed by integrating vertically the aerosol scattering and absorption coefficients obtained with a standard Mie calculation applied to assumed size distributions, hygroscopicity, refractive indices, and densities for individual aerosol components and summing over

all components (Martin et al., 2003). Optical properties are listed in Table 3. Sulfate, nitrate, and ammonium share the same optical properties and are lumped as an SNA aerosol component for the purpose of optical calculations. All aerosol components except dust are assumed to follow lognormal size distributions. Dust includes seven size bins (centered at radii of 0.15, 0.25, 0.4, 0.8, 1.5, 2.5, and 4.0 μm) for optical calculations, with the smallest four bins partitioned by mass from the first advected dust bin following Zhang et al. (2013). Dust particles follow a gamma size distribution within their optical size bins (Curci, 2012). The BC absorption enhancement from coating is as given by X. Wang et al. (2014).

Our initial simulations indicated that aerosol extinction coefficients from the standard GEOS-Chem version 12.7.1 underestimated in-situ-measured extinction coefficients during KORUS-AQ by 20 % on average (Fig. S1 in the Supplement). We traced this problem to bias in the assumed size distributions for SNA and organic aerosol, as shown in Sect. 3. Therefore, we recomputed the diagnostic AOD using updated lognormal size distributions for SNA and organic aerosol with number median radius $R_{N,\text{med}} = 0.11 \mu\text{m}$ and geometric standard deviation $\sigma = 1.4$ based on KORUS-AQ observations instead of $R_{N,\text{med}} = 0.058 \mu\text{m}$ and $\sigma = 1.6$ in the standard model version 12.7.1, which is derived from IMPROVE network measurements of aerosol mass scattering efficiency over North America (Latimer and Martin, 2019).

3 Aerosol concentrations and optical properties during KORUS-AQ

Here we use the KORUS-AQ aircraft observations and their simulation with GEOS-Chem to better understand the vertical distributions of different aerosol components contributing to AOD over South Korea. We begin with the mean vertical profile of aerosol mass and go on to examine the aerosol optical properties. This provides the basis for analyzing the observed vertical profile of aerosol extinction, its simulation by GEOS-Chem, and the consistency with GEO satellite and AERONET AOD measurements over South Korea during the KORUS-AQ period.

3.1 Vertical profile of aerosol mass

Figure 1 shows the mean aircraft vertical profiles of aerosol mass observed during KORUS-AQ and their simulation by GEOS-Chem. The KORUS-AQ aircraft sampled during the daytime, mainly between 08:00 and 16:00 local time. Here and elsewhere, the model is sampled along the flight tracks and at the flight times. The observed vertical distribution of aerosol mass concentrations (Fig. 1a) shows that 58 % of column aerosol mass is below 2 km altitude, which we define as the average planetary boundary layer (PBL) during KORUS-AQ, and 34 % is at 2–5 km altitude, which we define as the

Table 3. Aerosol optical properties^a. Note that n/a stands for not applicable.

| Aerosol component | $R_{N,med}$, μm | σ | Hygroscopicity ^b | Refractive index | ρ , g cm^{-3} |
|----------------------|-----------------------------|----------|-----------------------------|-------------------------------|-----------------------------|
| SNA ^c | 0.11 | 1.4 | $\kappa = 0.61$ | $1.53 - 6.0 \times 10^{-3}i$ | 1.7 |
| Organic ^c | 0.11 | 1.4 | $\kappa = 0.1$ | $1.53 - 6.0 \times 10^{-3}i$ | 1.3 |
| BC | 0.020 | 1.6 | GADS | $1.75 - 4.4 \times 10^{-1}i$ | 1.8 |
| Sea salt (fine) | 0.085 | 1.5 | GADS | $1.5 - 1.0 \times 10^{-8}i$ | 2.2 |
| Sea salt (coarse) | 0.40 | 1.8 | GADS | $1.5 - 1.0 \times 10^{-8}i$ | 2.2 |
| Dust | Seven size bins | n/a | $\kappa = 0^d$ | $1.558 - 1.4 \times 10^{-3}i$ | $2.5\text{--}2.65^e$ |

^a Aerosol optical properties used in this work for computing aerosol scattering and absorption coefficients. Values are from the standard GEOS-Chem model version 12.7.1, except for the size distributions of SNA and organic aerosol, which are based on KORUS-AQ observations (see text). All aerosol components except dust have lognormal dry size distributions, where $R_{N,med}$ is the number median radius, and σ is the geometric standard deviation. Refractive indices are for 550 nm wavelength; ρ is the dry aerosol mass density.

^b Hygroscopic growth for SNA and organic aerosol as a function of relative humidity (RH; %) is computed from κ -Kohler theory as a diameter growth factor $GF = (1 + \kappa \cdot RH/(100 - RH))^{1/3}$ (Latimer and Martin, 2019). Hygroscopic growth factors for other aerosol components are from the Global Aerosol Data Set (GADS) as tabulated in Chin et al. (2002) and Martin et al. (2003). ^c $R_{N,med}$ and σ are fit to KORUS-AQ observations as described in the text. Standard GEOS-Chem v12.7.1 assumes $R_{N,med} = 0.058 \mu\text{m}$ and $\sigma = 1.6$ (Latimer and Martin, 2019). ^d Hygroscopic growth of dust particles is assumed negligible. ^e Sub-micron dust particles have a density of 2.5 g cm^{-3} , while coarse-mode dust particles have a density of 2.65 g cm^{-3} . Dust size distribution is described in the text.

lower free troposphere (FT). The model has a similar vertical distribution (Fig. 1b), with 57 % of aerosol mass in the PBL and 36 % in the lower FT. SNA, organic aerosol, and dust each contribute about a third of aerosol mass in the PBL, while dust dominates in the lower FT both in the observations and in the model. The enhanced dust in the lower FT is driven by a few dust events, which the model reproduces (Fig. S2). Black carbon and sea salt (not shown) make only minor contributions to aerosol mass. The model underestimates sulfate by 28 % in the PBL, which leads to a 20 % overestimate of nitrate, with a canceling effect on the SNA mass simulation.

The GEOS-Chem simulation of organic aerosol in this work uses the simple scheme of Pai et al. (2020) and underestimates aircraft observations by 16 % in the PBL. Over 90 % of GEOS-Chem organic aerosol is secondary, consistent with observations (Fig. S4; Nault et al., 2018; Pai et al., 2020). GEOS-Chem simulation of the KORUS-AQ aerosol component profiles for different meteorological regimes is presented in Park et al. (2021).

3.2 Aerosol size distributions

Figure 2a shows the normalized dry aerosol number size distributions on each of the 20 flights and in 3 altitude bands: < 1.5, 3–5, and 6–7 km (60 lines). The spread in the size distributions above $1 \mu\text{m}$ in diameter reflects dust influence. We select measurements below 1.5 km altitude when SNA + organic aerosol mass concentrations are more than 4 times that of dust as defining the SNA + organic aerosol size distributions (green lines in Fig. 2a). Conditions dominated by SNA + organic aerosols define the lower envelopes of the ensemble of size distributions at diameter $> 1 \mu\text{m}$. SNA and organic aerosols were observed to have similar size distributions during KORUS-AQ (Kim et al., 2018).

Figure 2b converts the SNA + organic-aerosol-dominated number size distributions to volume size distributions. The

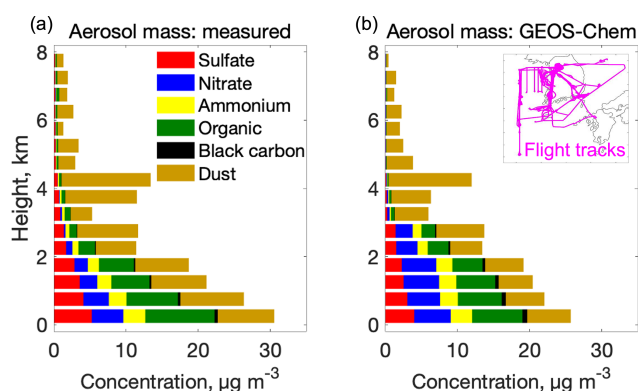


Figure 1. Vertical profiles of aerosol mass during KORUS-AQ. Panel (a) shows the mean vertical distributions of observed mass concentrations of major aerosol components at ambient temperature and pressure. Panel (b) is the same as (a) but from the GEOS-Chem model sampled along the flight tracks (inset). We derive dust concentration from SAGA Ca^{2+} and Na^+ following Shah et al. (2020) by assuming that non-sea-salt Ca^{2+} accounts for 7.1 % of dust mass: $[\text{dust}] = ([\text{Ca}^{2+}] - 0.0439 [\text{Na}^+]/2)/0.071$, where the brackets denote mass concentration. Modeled dust is shown for particles with geometric diameter $< 2.5 \mu\text{m}$, to be consistent with SAGA measurements (Table 2, footnote e). Measured sulfate, nitrate, ammonium, and organic aerosol concentrations are from the AMS instrument (values from the SAGA instrument are shown in Fig. S4). All data are averaged over 500 m vertical bins. Here and elsewhere, we excluded pollution plumes diagnosed by either NO_2 or $\text{SO}_2 > 10 \text{ ppbv}$ (3.4 % of all the data).

observed SNA + organic-aerosol-dominated size distribution is shifted toward larger sizes relative to the standard GEOS-Chem. The secondary maximum in the coarse mode could be due to dust. We fitted the observed SNA + organic aerosol size distributions to a lognormal distribution with volume median radius $R_{v,med} = 0.15 \mu\text{m}$ and geometric standard

deviation $\sigma = 1.4$. The number median radius is derived from the volume median radius following Seinfeld and Pandis (2016):

$$\ln R_{N,med} = \ln R_{V,med} - 3\ln^2\sigma, \quad (1)$$

which yields $R_{N,med} = 0.11 \mu\text{m}$. In comparison, the standard GEOS-Chem size distribution from Latimer and Martin (2019) has $R_{N,med} = 0.058 \mu\text{m}$ and $\sigma = 1.6$. We adopt the observed lognormal size distribution parameters in what follows (Table 3).

3.3 Aerosol extinction and relation to AOD

Figure 3 shows the vertical profiles of ambient aerosol extinction coefficients and RH during KORUS-AQ. Vertical profiles of aerosol extinction were measured on the aircraft both remotely with the HSRL instrument (above and below the aircraft) and in situ with TSI-3563 nephelometers (for scattering) and PSAPs (for absorption). The two agree well, as shown in Fig. 3a. They indicate that 76 %–90 % of column aerosol extinction is in the PBL at 0–2 km altitude, and 9 %–19 % is in the lower FT at 2–5 km. Both measurements show that aerosol extinction is much more strongly weighted to the PBL than aerosol mass (Fig. 1).

Also shown in Fig. 3a are the contributions of individual aerosol components to the extinction profile, as computed from the GEOS-Chem optical properties (Table 3) applied to the observed mass concentrations. The sum shows a good match to the measured extinction coefficient profiles. The much larger contribution of the PBL to column aerosol extinction than to column mass is because aerosol mass in the lower FT is mainly composed of dust, whose mass extinction efficiency is much smaller than SNA and organic aerosols due to its coarse size and lack of hygroscopic growth (Fig. S5). The mean AOD inferred from the aircraft data is 0.36, and 59 % is contributed by SNA, 27 % by organic aerosol, 12 % by dust, and 2 % by BC. It is consistent with the mean AODs measured at AERONET stations in South Korea during KORUS-AQ (Fig. S6).

Figure 3b shows the GEOS-Chem simulation of aerosol extinction profiles for comparison to the observations in Fig. 3a. The model underestimates extinction coefficients by 20 % below 1 km altitude, leading to a 10 % underestimate of aircraft-inferred AOD, although there is no such underestimate in aerosol mass. This is caused by a negative RH bias in the GEOS-FP meteorological data used to drive GEOS-Chem, particularly under high-RH conditions (Fig. 3c), and is corrected if we apply the observed RH rather than the GEOS-FP RH to the GEOS-Chem aerosol mass concentrations (Fig. 3d).

4 AOD and surface particulate matter over South Korea during KORUS-AQ

Our analysis of Sect. 3 used the KORUS-AQ aircraft data together with GEOS-Chem to attribute AOD over South Korea to individual aerosol components and altitudes. We now take the next step of evaluating the capability of GEOS-Chem to independently simulate observed AODs and surface particulate matter concentrations.

Figure 4a shows the spatial distribution of the fused geostationary satellite (GOCI-AHI) AOD (GEO satellite AOD) during the KORUS-AQ period with AERONET total AOD added as circles. The GEO satellite AOD shows high values (0.5–0.6) along the west coast of South Korea, significantly correlated with AERONET total AOD with a spatial correlation coefficient (R) of 0.7. GEO satellite AOD is biased low at sites in the Seoul metropolitan area (SMA) and is biased high on the Yellow Sea islands, resulting in an overall -10% bias. The low biases in the SMA could be due to high-concentration aerosol pixels misidentified as clouds and/or possible issues with the aerosol type assumption in the aerosol retrieval, while the high biases on the Yellow Sea islands could result from uncertainties in the assumption of ocean surface reflectance, as has been discussed by Choi et al. (2016, 2018) and Lim et al. (2018, 2021). Sampling the AODs at or near the seven PM_{2.5} supersites operating during KORUS-AQ shows no significant bias (inset values in Fig. 4a).

Figure 4b–e show the spatial distributions of GEOS-Chem AOD, surface PM₁₀ (particulate matter with aerodynamic diameter less than 10 μm), surface PM_{2.5}, and surface coarse PM (PM₁₀ minus PM_{2.5}; particulate matter with aerodynamic diameter less than 10 μm and larger than 2.5 μm), with surface observations shown as circles and median values at the measurement sites inset. GEOS-Chem reproduces the satellite AOD enhancements along the west coast of South Korea, but the values are lower than observed, which we attribute to unaccounted coarse PM and negative RH bias as discussed below. Comparison of AERONET total and fine-mode AOD shows a 13 % contribution of coarse particles to total AOD. Comparison of GEOS-Chem to the fine-mode AERONET AOD, as shown in Fig. 4b, finds a 15 % underestimate that could be attributed to the negative bias in RH (Fig. 3c). Concurrent measurements of PM₁₀ and PM_{2.5} at AirKorea sites show that coarse PM (median 21 $\mu\text{g m}^{-3}$) accounts for 41 % of total PM₁₀ (50 $\mu\text{g m}^{-3}$), while coarse PM in GEOS-Chem is much lower (3.5 $\mu\text{g m}^{-3}$; Fig. 4e). Therefore, about half of the GEOS-Chem underestimate of total AOD can be attributed to missing coarse PM, with the other half coming from negative RH bias. Coarse PM has a concentration larger than 10 $\mu\text{g m}^{-3}$ across South Korea, with higher concentration in the SMA ($\sim 30 \mu\text{g m}^{-3}$) than in rural areas ($\sim 15 \mu\text{g m}^{-3}$), implying an origin from both anthropogenic and natural sources (Fig. 4e).

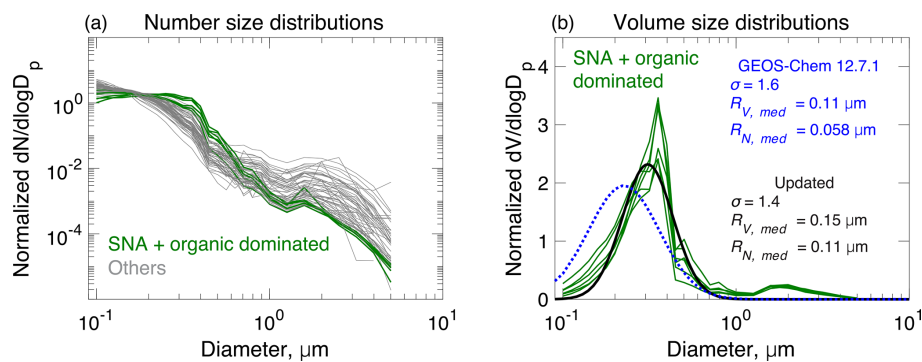


Figure 2. Aerosol dry size distributions measured in the KORUS-AQ aircraft campaign. Panel (a) shows mean normalized number size distributions measured on each of the 20 flights and for 3 altitude bins: < 1.5, 3–5, and 6–7 km (60 lines total). The SNA + organic-aerosol-dominated size distribution profiles are highlighted in color. Panel (b) shows normalized volume size distributions for conditions dominated by SNA + organic aerosols (green lines), along with a least-square fit to a lognormal distribution (black line) and the standard GEOS-Chem v12.7.1 size distribution from Latimer and Martin (2019) (dashed blue line). Normalization imposes an arbitrary value of unit area below each line. Lognormal distribution parameters are inset in panel (b), including volume median radius ($R_{V,med}$), number median radius ($R_{N,med}$), and geometric standard deviation (σ).

GEOS-Chem overestimates surface $PM_{2.5}$ by 43 % over South Korea (Fig. 4d), in contrast to the simulation of AERONET fine-mode AOD (Fig. 4b). Figure 4f–j show the spatial distributions of major $PM_{2.5}$ components in GEOS-Chem (background) and measurements (filled circles). GEOS-Chem is not significantly biased relative to the observations for organic aerosol and BC and underestimates sulfate by 22 %. We find that the model bias for $PM_{2.5}$ is largely driven by nitrate, which is overestimated by a factor of 3 and leads to a 56 % overestimate of ammonium. By contrast, comparison to the KORUS-AQ data below 1 km altitude showed only a 20 % overestimate of nitrate (Fig. 1). This is because the model bias is mainly driven by nighttime conditions (Fig. 5), while aircraft samples in the daytime during KORUS-AQ. The cause of this large model bias is analyzed by Travis et al. (2021) and is attributed to nighttime nitrate chemistry and deposition in the stratified boundary layer.

5 AOD and its relationship to $PM_{2.5}$ over East Asia

We build on our analysis of the KORUS-AQ period for a broader interpretation of the distribution of AOD over Korea and China and its relationship to surface $PM_{2.5}$, acknowledging that the conditions sampled in KORUS-AQ may not be representative of other seasons or of China. Figure 6 shows the spatial distributions of 2016 annual and seasonal mean geostationary (GEO) satellite AODs, the corresponding GEOS-Chem clear-sky AODs, and GEOS-Chem surface $PM_{2.5}$. The figure gives normalized mean biases (NMBs) relative to ground-based measurements from AERONET and from the $PM_{2.5}$ surface networks (shown as circles) over the North China region (34.5–40.5° N, 115.5–122° E) and South Korea. The North China region is defined to overlap with the

domain of the geostationary satellite AOD and to ensure consistent seasonal variations within its narrow latitude.

On an annual mean basis, AOD over North China (~ 0.5 – 0.6) is about 50 % larger than over South Korea (~ 0.3 – 0.4). AOD over South Korea shows higher values (> 0.4) in the Seoul metropolitan area, consistent with that during the KORUS-AQ period (Fig. 4a). Transport from the Asian continent is strongest in spring, when the frequency of cold front passages is highest (Liu et al., 2003). AERONET total AOD in spring (0.4–0.6) is twice as large as fine-mode AOD (0.2–0.3), reflecting a large contribution of dust. In seasons other than spring, 80 %–90 % of AERONET total AOD is contributed by the fine mode. There is large seasonality in AODs over North China and weaker seasonality over South Korea, which is discussed below.

The GEOS-Chem clear-sky AODs show the same spatial and seasonal patterns as GEO satellite AODs but tend to be low in spring and summer. Comparison of the model to AERONET AODs confirms this bias and shows better agreement with fine-mode AOD in spring (NMB of -1 %), implying an underestimate of coarse dust that is consistent with our comparisons to the AirKorea network data during KORUS-AQ (Fig. 4e). Comparison of clear-sky and all-sky AODs in GEOS-Chem shows no significant difference on an annual and seasonal mean basis, except for winter (Fig. S7). Winter has larger all-sky AOD than clear-sky AOD and the lowest rate of successful satellite retrievals (Fig. S7), which may be due in part to misclassification of heavy wintertime $PM_{2.5}$ pollution as clouds (Zhang et al., 2020).

The spatial distributions of $PM_{2.5}$ in GEOS-Chem in different seasons match closely the observations (Fig. 6, bottom row). We see also a close coincidence between the spatial distributions of $PM_{2.5}$ and AODs, in both the observations and the model. On an annual mean basis, GEOS-Chem overesti-

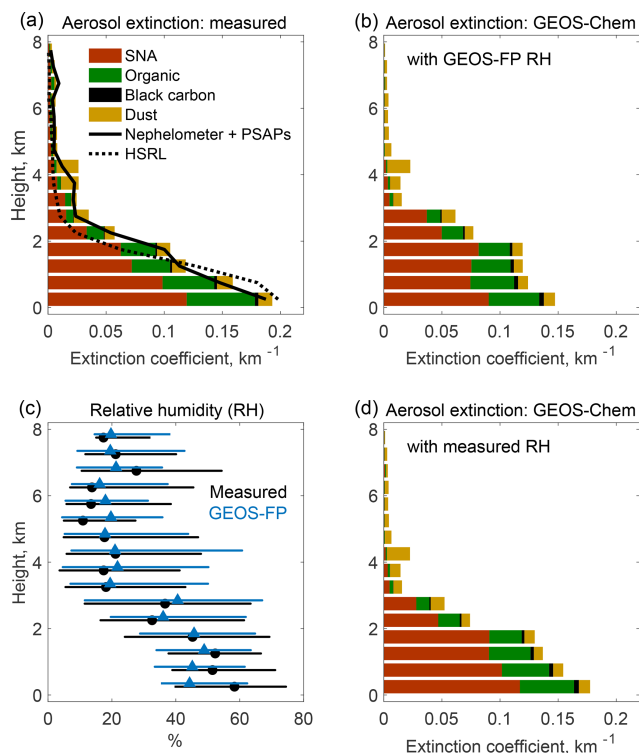


Figure 3. Vertical profiles of aerosol extinction coefficients and relative humidity (RH) during KORUS-AQ. Panel (a) shows the mean observed vertical distributions of 550 nm extinction coefficients measured in situ (nephelometer + PSAPs; at ambient RH) and remotely (HSRL), along with an independent calculation (colored horizontal bars) from the measured mass concentrations of major aerosol components, measured RH, and GEOS-Chem optical properties as given in Table 3. Panel (b) shows the mean aerosol extinction profile in GEOS-Chem and the contributions from the different model components. Panel (c) is the median vertical profile of RH (horizontal bars are 25th–75th percentiles) from aircraft measurements and the GEOS-FP assimilated meteorological data used to drive GEOS-Chem. Panel (d) is the same as (b) but calculated using measured RH.

mates $PM_{2.5}$ by 16 % in North China and by 14 % in South Korea, even though it underestimates AERONET fine-mode AODs by 15 %. The overestimate of $PM_{2.5}$ in South Korea is worst in spring (27 %), consistent with KORUS-AQ results, which we previously attributed to excessive nighttime nitrate build-up in the model. Over North China, the overestimate of $PM_{2.5}$ is worst in summer (33 %), consistent with the nitrate overestimate in summer shown in our previous study (Zhai et al., 2021), which could also be due to model overestimate of nighttime nitrate (Miao et al., 2020).

Figure 7 shows daily correlations of the regional average series between AERONET total AOD and GEO satellite AOD, between AERONET fine-mode AOD and GEOS-Chem AOD, and between measured $PM_{2.5}$ and GEOS-Chem $PM_{2.5}$. Correlations in Fig. 7 are all statistically significant, with correlation coefficients (R) ranging from around 0.7 to

more than 0.9 and normalized mean biases (NMB) within ± 30 %. The correlations of these three pairs are similar over South Korea and North China, except that GEOS-Chem overestimates springtime $PM_{2.5}$ in South Korea but not over North China, possibly due to a model overestimate of the long-range transport of $PM_{2.5}$ from China to South Korea in spring.

Figure 8 compares the seasonalities of AOD and $PM_{2.5}$ over the North China and South Korea regions. The GEO satellite AOD over North China peaks in July and is minimum in winter. Most of the AOD is attributed by GEOS-Chem to SNA aerosol, same as in South Korea. AOD over South Korea also has a summer maximum and winter minimum but with weaker amplitude than over North China. The GEOS-Chem AOD is biased low by ~ 20 % in summer, and this is largely due to a low RH bias (Fig. S8), as seen previously in the KORUS-AQ comparisons, but amplified by the high RH in summer that drives hygroscopic growth (Latimer and Martin, 2019).

Surface $PM_{2.5}$ in the observations over North China and South Korea shows opposite seasonality to AOD, with minimum values in summer and maximum values in winter–spring. GEOS-Chem reproduces the strong seasonality of $PM_{2.5}$ in North China and the much weaker seasonality in South Korea. The high $PM_{2.5}$ values over North China in winter in the model are mostly driven by organic aerosol, reflecting the large residential coal burning source (Fig. S9; Zheng et al., 2018). In South Korea, by contrast, household energy is mainly from natural gas and electricity (Lee et al., 2020; Woo et al., 2020). GEOS-FP daytime PBL height also shows a stronger seasonality over North China than over South Korea (Fig. S8), generally consistent with the CALIPSO daytime PBL height (Su et al., 2018). Previous studies have shown opposite seasonality between MODIS AOD and surface $PM_{2.5}$ over North China and attributed this to the seasonality in PBL height and RH (Qu et al., 2016; Xu et al., 2019). The mean $PM_{2.5}$ / AOD ratio over North China in winter ($236 \mu\text{g m}^{-3}$) is 8 times that in summer ($29 \mu\text{g m}^{-3}$), with autumn ($94 \mu\text{g m}^{-3}$) and spring ($89 \mu\text{g m}^{-3}$) in between, while over South Korea, the $PM_{2.5}$ / AOD ratio in winter ($62 \mu\text{g m}^{-3}$) is only 70 % larger than in summer ($36 \mu\text{g m}^{-3}$).

6 Conclusions

Geostationary satellite observations of aerosol optical depth (AOD) over East Asia may usefully complement $PM_{2.5}$ air quality networks if the local relationship between AOD and $PM_{2.5}$ can be inferred from a physical and/or statistical model. Here we analyzed the ability of the GEOS-Chem chemical transport model to provide this relationship by using a new fused GOCI–AHI geostationary satellite product together with AERONET ground-based AOD measurements, aerosol vertical profiles over South Korea from the KORUS-

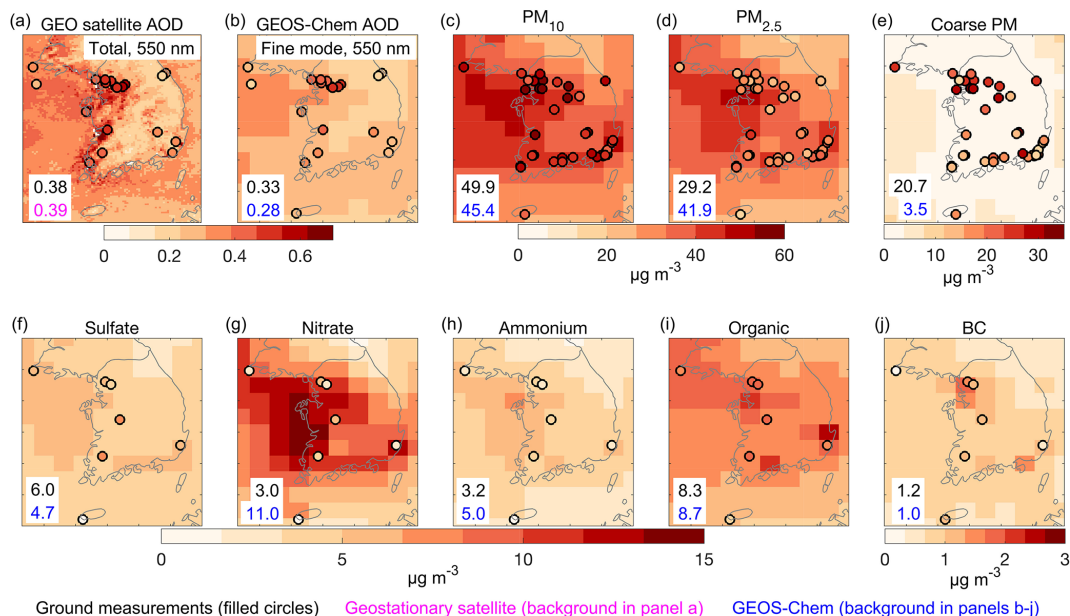


Figure 4. Spatial distributions of AOD and surface PM_{10} , $\text{PM}_{2.5}$, coarse PM (PM_{10} minus $\text{PM}_{2.5}$), and major $\text{PM}_{2.5}$ components over South Korea averaged during KORUS-AQ (9 May–10 June 2016). Panel (a) shows the fused geostationary (GEO) 550 nm AOD from the GOCI and AHI satellites (background) and AERONET 550 nm total AOD (filled circles). Panel (b) shows GEOS-Chem 550 nm AOD sampled at hourly GEO satellite AOD (GEOS-Chem clear-sky AOD; background) and AERONET 550 nm fine-mode AOD (filled circles). Panel (c) shows surface PM_{10} modeled by GEOS-Chem (background) and measured at ground sites (filled circles). Panels (d)–(j) are the same as panel (c) but respectively for $\text{PM}_{2.5}$; coarse PM (PM_{10} minus $\text{PM}_{2.5}$); and sulfate, nitrate, ammonium, organic aerosol, and BC $\text{PM}_{2.5}$ components. Values inset are median values from ground-based measurements (black) and sampled from GEO satellite (magenta) and GEOS-Chem (blue). Measured PM_{10} , $\text{PM}_{2.5}$, and coarse PM in panels (c)–(e) are shown for a random selection of 50 % of AirKorea sites to visualize spatial distribution, and inset values are for the seven supersites where $\text{PM}_{2.5}$ composition was measured. Median AOD values inset are sampled at or near the seven supersites to avoid biasing by the large number of sites in the Seoul metropolitan area. Modeled total $\text{PM}_{2.5}$ concentrations are calculated at 35 % RH (Table 3). Modeled PM_{10} is the sum of $\text{PM}_{2.5}$, coarse dust, and coarse sea salt.

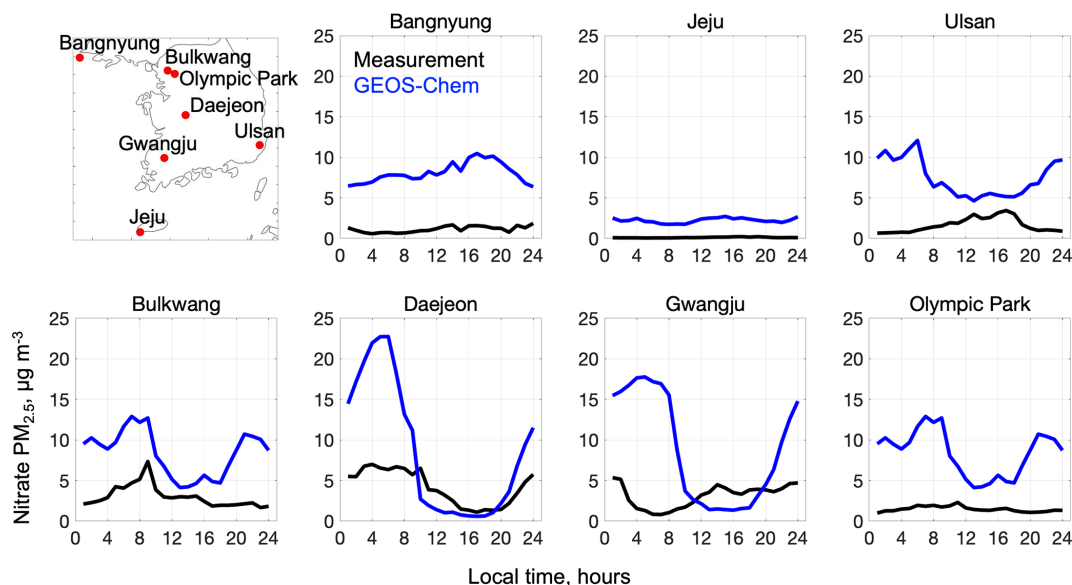


Figure 5. Median diurnal variations in $\text{PM}_{2.5}$ nitrate concentrations at the seven supersites (top left panel) operated in South Korea during KORUS-AQ (9 May–10 June 2016). Values are medians binned by hour. GEOS-Chem model values are sampled to coincide with the measurements.

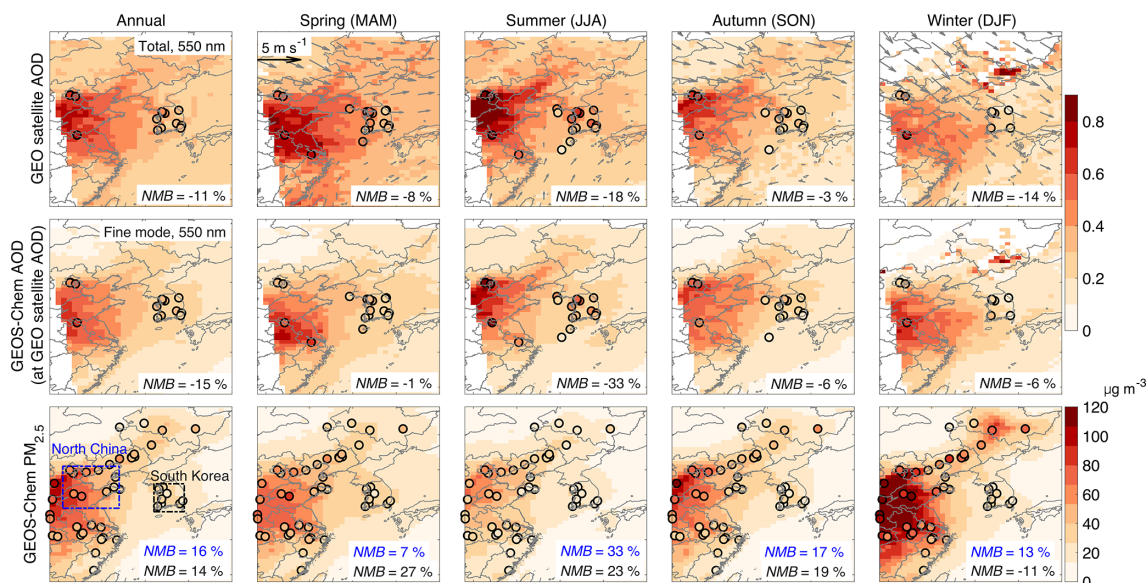


Figure 6. Spatial distributions of 2016 annual and seasonal mean AOD (550 nm) and surface $\text{PM}_{2.5}$. The top row shows the observed GOCI–AHI geostationary satellite AOD (GEO satellite AOD) on the GEOS-Chem $0.5^\circ \times 0.625^\circ$ grid with superimposed 925 hPa GEOS-FP wind fields and AERONET total AODs (circles). The middle row shows clear-sky GEOS-Chem AOD, with AERONET fine-mode AOD added as circles. The bottom row shows GEOS-Chem surface $\text{PM}_{2.5}$ (background) with surface network measurements (circles). AERONET AODs are shown only when more than 10 months of data are available for the annual mean, and all 3 months of data are available for each season. The $\text{PM}_{2.5}$ observations shown are for a random selection of 7 % of network sites for visual clarity. GEOS-Chem $\text{PM}_{2.5}$ is calculated at 35 % RH (Table 3). Normalized mean biases (NMBs) inset are for the comparisons of GEO satellite and GEOS-Chem values to the corresponding ground measurements.

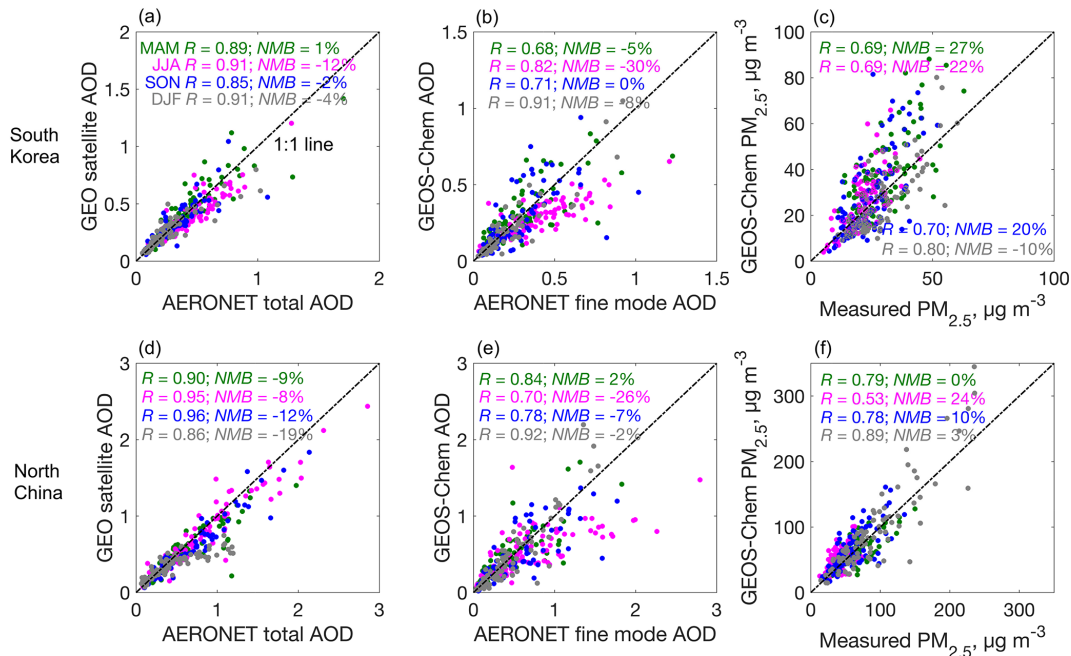


Figure 7. Scatterplots of regional mean daily (a, d) GEO satellite AOD vs. AERONET total AOD, (b, e) GEOS-Chem AOD vs. AERONET fine-model AOD, and (c, f) GEOS-Chem $\text{PM}_{2.5}$ vs. measured $\text{PM}_{2.5}$ over South Korea (a–c) and North China (d–f). Different colors represent different seasons. Values inset are correlation coefficients (R) and normalized mean biases (NMBs) between surface measurements and GEO satellite or GEOS-Chem values.

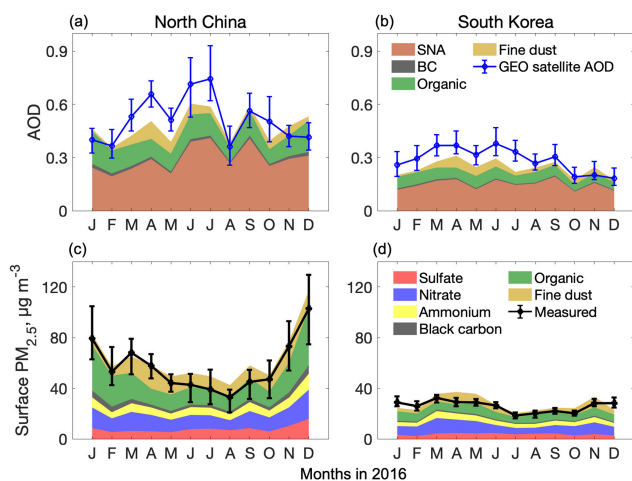


Figure 8. Seasonality of AOD and $\text{PM}_{2.5}$ over North China and South Korea and contributions from individual aerosol components. Lines show regional medians (error bars: 25th and 75th percentiles) for the ensemble of monthly averaged observations in the regions (Fig. 6) in 2016. GEOS-Chem values are shown as stacked contours for individual components and are sampled in the same way as the observations.

AQ aircraft campaign (May–June 2016), and surface network observations. This allowed us to identify the critical features and limitations of the model for successfully representing the AOD– $\text{PM}_{2.5}$ relationship.

The KORUS-AQ observations show that total aerosol extinction (550 nm) in the vertical column is dominated by sulfate–nitrate–ammonium (SNA) and organic aerosol in the planetary boundary layer (PBL), despite large concentrations of dust in the free troposphere. This reflects the optically effective size and high hygroscopicity of the PBL aerosols. We find that GEOS-Chem aerosol optical properties based on measurements over the North America (default model setting) underestimate KORUS-AQ aerosol mass extinction efficiency by around 20 %. In addition, a low bias in GEOS-FP RH below 1 km leads to a 10 % underestimate of AOD inferred from the aircraft profile. Adjustments of GEOS-Chem aerosol optical properties and RH enable a successful simulation of the aerosol extinction profile. SNA aerosol contributes 59 % of column aerosol extinction in the KORUS-AQ data, while organic aerosol contributes 27 %, and dust contributes 12 %.

Comparison of GOCI–AHI geostationary (GEO) satellite AOD to AERONET AODs over South Korea shows good agreement, with high values along the west coast. GEOS-Chem is more consistent with the fine-mode AERONET AOD because of its insufficient accounting of coarse particles, which account for 13 % of AERONET AOD. The remaining 15 % underestimate of AERONET fine-mode AOD by GEOS-Chem can be attributed to the RH low bias. GEOS-Chem overestimates 24 h surface $\text{PM}_{2.5}$ over South Korea by 43 % during the KORUS-AQ period, despite its success-

ful simulation of the aircraft data and fine-mode AERONET AOD, and we find that this is due to a large overestimate of nighttime nitrate.

Broader examination of the GOCI–AHI AOD satellite data over East Asia shows spatial distributions and magnitudes consistent with AERONET and featuring in particular strong Asian outflow in spring that includes a large dust component. We find that AODs and $\text{PM}_{2.5}$ have similar large-scale spatial distributions but opposite seasonality. $\text{PM}_{2.5}$ in North China has a strong winter maximum and summer minimum, while AOD shows the opposite. GEOS-Chem simulates successfully the seasonality of measured $\text{PM}_{2.5}$ but is biased low by $\sim 20\%$ in summer for AOD, due again to low RH bias like that during KORUS-AQ, amplified by the high RH in summer that drives hygroscopic growth (Latimer and Martin, 2019). We find that the opposite AOD and $\text{PM}_{2.5}$ seasonality is mainly driven by residential coal heating sources and low PBL depths in winter and high RH in summer. Observations of $\text{PM}_{2.5}$ and AOD in South Korea show the same seasonal phases as in North China but with much weaker amplitude, reflecting the lack of residential coal burning in winter and a weaker seasonal amplitude of PBL depth.

In summary, we find that the geostationary GOCI–AHI satellite AOD data provide high-quality information for monitoring of $\text{PM}_{2.5}$ over East Asia but that physical interpretation requires accurate information on aerosol size distributions, PBL depths, RH, the role of coarse particles, and diurnal variation in $\text{PM}_{2.5}$, all of which are subject to large uncertainties in chemical transport models. Addressing these uncertainties should be a target of future work. We have used results from our study in a recent machine-learning reconstruction of daily 2011–present $\text{PM}_{2.5}$ over East Asia from GOCI AOD data by identifying critical variables for the machine-learning algorithm and providing blended gap-filling data for cloudy scenes (Pendergrass et al., 2021). Besides the factors discussed in this study, topography might be another important factor influencing surface $\text{PM}_{2.5}$ and its vertical mixing (Su et al., 2018), and this also requires future investigation.

Data availability. Aircraft data during KORUS-AQ are available at <https://doi.org/10.5067/Suborbital/KORUSAQ/DATA01> (Aknan and Chen, 2019). $\text{PM}_{2.5}$ data over China are from <http://www.quotsoft.net/air/> (CNEMC, 2021). $\text{PM}_{2.5}$ data over South Korea are from https://www.airkorea.or.kr/web/last_amb_hour_data?pMENU_NO=123 (KEC, 2021). AERONET data can be found at <https://aeronet.gsfc.nasa.gov/> (Giles and Holben, 2014). The MEIC emission inventory is at <http://www.meicmodel.org/> (Tsinghua University, 2021). The KORUSv5 emission inventory is developed by Konkuk University, available at http://aisl.konkuk.ac.kr/#/emission_data/korus-aq_emissions (CAIS, 2021).

Supplement. The supplement related to this article is available online at: <https://doi.org/10.5194/acp-21-16775-2021-supplement>.

Author contributions. SZ and DJJ designed the study. SZ performed the data analysis and model simulations with contributions from JFB, KL, HCL, SKK, XW, PL, KRT, and HoL. JK, SL, and HyL provided satellite AOD data. RJP and JIJ contributed to AirKorea data processing. JM and RM provided the dust emission inventory. GL, FY, and JMM updated wet deposition simulation. JWH, BEA, JED, JLJ, PCJ, and BAN contributed to KORUS-AQ campaign measurements. JHW and YK provided the KORUSv5 emission inventory. QZ provided the MEIC emission inventory. SZ and DJJ wrote the paper with input from all authors.

Competing interests. The contact author has declared that neither they nor their co-authors have any competing interests.

Disclaimer. Publisher's note: Copernicus Publications remains neutral with regard to jurisdictional claims in published maps and institutional affiliations.

Financial support. This work was funded by the Samsung Advanced Institute of Technology and the Harvard–NUIST Joint Laboratory for Air Quality and Climate (JLAQC). Jose L. Jimenez, Pedro Campuzano-Jost, and Benjamin A. Nault were supported by NASA (grant nos. NNX15AT96G and 80NSSC19K0124).

Review statement. This paper was edited by Zhanqing Li and reviewed by three anonymous referees.

References

- Aknan, A. and Chen, G.: KORUS-AQ aircraft dataset, [data set], <https://doi.org/10.5067/Suborbital/KORUSAQ/DATA01>, 2019.
- Alexander, B., Park Rokjin, J., Jacob Daniel, J., and Gong, S.: Transition metal-catalyzed oxidation of atmospheric sulfur: Global implications for the sulfur budget, *J. Geophys. Res.-Atmos.*, 114, D02309, <https://doi.org/10.1029/2008JD010486>, 2009.
- Amos, H. M., Jacob, D. J., Holmes, C. D., Fisher, J. A., Wang, Q., Yantosca, R. M., Corbitt, E. S., Galarneau, E., Rutter, A. P., Gustin, M. S., Steffen, A., Schauer, J. J., Graydon, J. A., Louis, V. L. St., Talbot, R. W., Edgerton, E. S., Zhang, Y., and Sunderland, E. M.: Gas-particle partitioning of atmospheric Hg(II) and its effect on global mercury deposition, *Atmos. Chem. Phys.*, 12, 591–603, <https://doi.org/10.5194/acp-12-591-2012>, 2012.
- Brauer, M., Freedman, G., Frostad, J., van Donkelaar, A., Martin, R. V., Dentener, F., Dingenen, R. v., Estep, K., Amini, H., Apte, J. S., Balakrishnan, K., Barregard, L., Broday, D., Feigin, V., Ghosh, S., Hopke, P. K., Knibbs, L. D., Kokubo, Y., Liu, Y., Ma, S., Morawska, L., Sangrador, J. L. T., Shaddick, G., Anderson, H. R., Vos, T., Forouzanfar, M. H., Burnett, R. T., and Cohen, A.: Ambient Air Pollution Exposure Estimation for the Global Burden of Disease 2013, *Environ. Sci. Technol.*, 50, 79–88, <https://doi.org/10.1021/acs.est.5b03709>, 2016.
- Brock, C. A., Wagner, N. L., Anderson, B. E., Beyersdorf, A., Campuzano-Jost, P., Day, D. A., Diskin, G. S., Gordon, T. D., Jimenez, J. L., Lack, D. A., Liao, J., Markovic, M. Z., Middlebrook, A. M., Perring, A. E., Richardson, M. S., Schwarz, J. P., Welti, A., Ziemba, L. D., and Murphy, D. M.: Aerosol optical properties in the southeastern United States in summer – Part 2: Sensitivity of aerosol optical depth to relative humidity and aerosol parameters, *Atmos. Chem. Phys.*, 16, 5009–5019, <https://doi.org/10.5194/acp-16-5009-2016>, 2016.
- Chen, G., Li, S., Knibbs, L. D., Hamm, N. A. S., Cao, W., Li, T., Guo, J., Ren, H., Abramson, M. J., and Guo, Y.: A machine learning method to estimate PM_{2.5} concentrations across China with remote sensing, meteorological and land use information, *Sci. Total Environ.*, 636, 52–60, <https://doi.org/10.1016/j.scitotenv.2018.04.251>, 2018.
- Chen, J., Yin, J., Zang, L., Zhang, T., and Zhao, M.: Stacking machine learning model for estimating hourly PM_{2.5} in China based on Himawari 8 aerosol optical depth data, *Sci. Total Environ.*, 697, 134021, <https://doi.org/10.1016/j.scitotenv.2019.134021>, 2019.
- Chen, W., Tang, H., and Zhao, H.: Diurnal, weekly and monthly spatial variations of air pollutants and air quality of Beijing, *Atmos. Environ.*, 119, 21–34, <https://doi.org/10.1016/j.atmosenv.2015.08.040>, 2015.
- Cheng, Y., Dai, T., Goto, D., Schutgens, N. A. J., Shi, G., and Nakajima, T.: Investigating the assimilation of CALIPSO global aerosol vertical observations using a four-dimensional ensemble Kalman filter, *Atmos. Chem. Phys.*, 19, 13445–13467, <https://doi.org/10.5194/acp-19-13445-2019>, 2019.
- Chin, M., Ginoux, P., Kinne, S., Torres, O., Holben, B. N., Duncan, B. N., Martin, R. V., Logan, J. A., Higurashi, A., and Nakajima, T.: Tropospheric Aerosol Optical Thickness from the GOCART Model and Comparisons with Satellite and Sun Photometer Measurements, *J. Atmos. Sci.*, 59, 461–483, [https://doi.org/10.1175/1520-0469\(2002\)059<0461:TAOTFT>2.0.CO;2](https://doi.org/10.1175/1520-0469(2002)059<0461:TAOTFT>2.0.CO;2), 2002.
- China National Environmental Monitoring Centre (CNEMC): PM_{2.5} dataset in China, [data set], available at: <http://www.quotsoft.net/air/>, last access: 12 March 2021.
- Choi, M., Kim, J., Lee, J., Kim, M., Park, Y.-J., Holben, B., Eck, T. F., Li, Z., and Song, C. H.: GOCI Yonsei aerosol retrieval version 2 products: an improved algorithm and error analysis with uncertainty estimation from 5-year validation over East Asia, *Atmos. Meas. Tech.*, 11, 385–408, <https://doi.org/10.5194/amt-11-385-2018>, 2018.
- Choi, J., Park, R. J., Lee, H.-M., Lee, S., Jo, D. S., Jeong, J. I., Henze, D. K., Woo, J.-H., Ban, S.-J., Lee, M.-D., Lim, C.-S., Park, M.-K., Shin, H. J., Cho, S., Peterson, D., and Song, C.-K.: Impacts of local vs. trans-boundary emissions from different sectors on PM_{2.5} exposure in South Korea during the KORUS-AQ campaign, *Atmos. Environ.*, 203, 196–205, <https://doi.org/10.1016/j.atmosenv.2019.02.008>, 2019.
- Choi, M., Kim, J., Lee, J., Kim, M., Park, Y.-J., Jeong, U., Kim, W., Hong, H., Holben, B., Eck, T. F., Song, C. H., Lim, J.-H., and Song, C.-K.: GOCI Yonsei Aerosol Retrieval (YAER) algorithm and validation during the DRAGON-NE Asia 2012 campaign, *Atmos. Meas. Tech.*, 9, 1377–1398, <https://doi.org/10.5194/amt-9-1377-2016>, 2016.
- Choi, M., Lim, H., Kim, J., Lee, S., Eck, T. F., Holben, B. N., Garay, M. J., Hyer, E. J., Saide, P. E., and Liu, H.: Validation, comparison, and integration of GOCI, AHI, MODIS, MISR, and

- VIIRS aerosol optical depth over East Asia during the 2016 KORUS-AQ campaign, *Atmos. Meas. Tech.*, 12, 4619–4641, <https://doi.org/10.5194/amt-12-4619-2019>, 2019.
- Climate change and Air quality Information Systems research group (CAIS): KORUS-AQ Emissions version 5.0, available at: http://aisl.konkuk.ac.kr/#/emission_data/korus-aq_emissions, last access: 10 November 2021.
- Crawford, J. H., Ahn, J.-Y., Al-Saadi, J., Chang, L., Emmons, L. K., Kim, J., Lee, G., Park, J.-H., Park, R. J., Woo, J. H., Song, C.-K., Hong, J.-H., Hong, Y.-D., Lefer, B. L., Lee, M., Lee, T., Kim, S., Min, K.-E., Yum, S. S., Shin, H. J., Kim, Y.-W., Choi, J.-S., Park, J.-S., Szykman, J. J., Long, R. W., Jordan, C. E., Simpson, I. J., Fried, A., Dibb, J. E., Cho, S., and Kim, Y. P.: The Korea–United States Air Quality (KORUS-AQ) field study, *Elementa-Sci. Atmos.*, 9, 00163, <https://doi.org/10.1525/elementa.2020.00163>, 2021.
- Curci, G.: FlexAOD: a chemistry-transport model post-processing tool for a flexible calculation of aerosol optical properties, 1–4, available at: http://pumpkin.aquila.infn.it/gabri/download/curci_istp2012.pdf (last access: 10 November 2021), 2012.
- Dai, Q., Bi, X., Liu, B., Li, L., Ding, J., Song, W., Bi, S., Schulze, B. C., Song, C., Wu, J., Zhang, Y., Feng, Y., and Hopke, P. K.: Chemical nature of PM_{2.5} and PM₁₀ in Xi'an, China: Insights into primary emissions and secondary particle formation, *Environ. Pollut.*, 240, 155–166, <https://doi.org/10.1016/j.envpol.2018.04.111>, 2018.
- DeCarlo, P. F., Kimmel, J. R., Trimborn, A., Northway, M. J., Jayne, J. T., Aiken, A. C., Gonin, M., Fuhrer, K., Horvath, T., Docherty, K. S., Worsnop, D. R., and Jimenez, J. L.: Field-Deployable, High-Resolution, Time-of-Flight Aerosol Mass Spectrometer, *Anal. Chem.*, 78, 8281–8289, <https://doi.org/10.1021/ac061249n>, 2006.
- Di, Q., Amini, H., Shi, L., Kloog, I., Silvern, R., Kelly, J., Sabath, M. B., Choirat, C., Koutrakis, P., Lyapustin, A., Wang, Y., Mickley, L. J., and Schwartz, J.: An ensemble-based model of PM_{2.5} concentration across the contiguous United States with high spatiotemporal resolution, *Environ. Int.*, 130, 104909, <https://doi.org/10.1016/j.envint.2019.104909>, 2019.
- Dibb, J. E., Talbot, R. W., Scheuer, E. M., Seid, G., Avery, M. A., and Singh, H. B.: Aerosol chemical composition in Asian continental outflow during the TRACE-P campaign: Comparison with PEM-West B, *J. Geophys. Res.-Atmos.*, 108, 8815, <https://doi.org/10.1029/2002JD003111>, 2003.
- Eck, T. F., Holben, B. N., Sinyuk, A., Pinker, R. T., Goloub, P., Chen, H., Chatenet, B., Li, Z., Singh, R. P., Tripathi, S. N., Reid, J. S., Giles, D. M., Dubovik, O., O'Neill, N. T., Smirnov, A., Wang, P., and Xia, X.: Climatological aspects of the optical properties of fine/coarse mode aerosol mixtures, *J. Geophys. Res.-Atmos.*, 115, D19205, <https://doi.org/10.1029/2010JD014002>, 2010.
- Fairlie, T. D., Jacob, D. J., and Park, R. J.: The impact of transpacific transport of mineral dust in the United States, *Atmos. Environ.*, 41, 1251–1266, <https://doi.org/10.1016/j.atmosenv.2006.09.048>, 2007.
- Fairlie, T. D., Jacob, D. J., Dibb, J. E., Alexander, B., Avery, M. A., van Donkelaar, A., and Zhang, L.: Impact of mineral dust on nitrate, sulfate, and ozone in transpacific Asian pollution plumes, *Atmos. Chem. Phys.*, 10, 3999–4012, <https://doi.org/10.5194/acp-10-3999-2010>, 2010.
- Fisher, J. A., Jacob, D. J., Wang, Q., Bahreini, R., Carouge, C. C., Cubison, M. J., Dibb, J. E., Diehl, T., Jimenez, J. L., Leibensperger, E. M., Lu, Z., Meinders, M. B. J., Pye, H. O. T., Quinn, P. K., Sharma, S., Streets, D. G., van Donkelaar, A., and Yantosca, R. M.: Sources, distribution, and acidity of sulfate–ammonium aerosol in the Arctic in winter–spring, *Atmos. Environ.*, 45, 7301–7318, <https://doi.org/10.1016/j.atmosenv.2011.08.030>, 2011.
- Fountoukis, C. and Nenes, A.: ISORROPIA II: a computationally efficient thermodynamic equilibrium model for K⁺–Ca²⁺–Mg²⁺–NH₄⁺–Na⁺–SO₄²⁻–NO₃⁻–Cl⁻–H₂O aerosols, *Atmos. Chem. Phys.*, 7, 4639–4659, <https://doi.org/10.5194/acp-7-4639-2007>, 2007.
- Geng, G., Zhang, Q., Tong, D., Li, M., Zheng, Y., Wang, S., and He, K.: Chemical composition of ambient PM_{2.5} over China and relationship to precursor emissions during 2005–2012, *Atmos. Chem. Phys.*, 17, 9187–9203, <https://doi.org/10.5194/acp-17-9187-2017>, 2017.
- Giles, D. M. and Holben, B. N., Aerosol Robotic Network, Goddard Space Flight Center, [data set], available at: <https://aeronet.gsfc.nasa.gov/> (last access: 23 July 2021), 2014.
- Giles, D. M., Sinyuk, A., Sorokin, M. G., Schafer, J. S., Smirnov, A., Slutsker, I., Eck, T. F., Holben, B. N., Lewis, J. R., Campbell, J. R., Welton, E. J., Korkin, S. V., and Lyapustin, A. I.: Advancements in the Aerosol Robotic Network (AERONET) Version 3 database – automated near-real-time quality control algorithm with improved cloud screening for Sun photometer aerosol optical depth (AOD) measurements, *Atmos. Meas. Tech.*, 12, 169–209, <https://doi.org/10.5194/amt-12-169-2019>, 2019.
- Guenther, A. B., Jiang, X., Heald, C. L., Sakulyanontvittaya, T., Duhl, T., Emmons, L. K., and Wang, X.: The Model of Emissions of Gases and Aerosols from Nature version 2.1 (MEGAN2.1): an extended and updated framework for modeling biogenic emissions, *Geosci. Model Dev.*, 5, 1471–1492, <https://doi.org/10.5194/gmd-5-1471-2012>, 2012.
- Guo, J., Xia, F., Zhang, Y., Liu, H., Li, J., Lou, M., He, J., Yan, Y., Wang, F., Min, M., and Zhai, P.: Impact of diurnal variability and meteorological factors on the PM_{2.5} – AOD relationship: Implications for PM_{2.5} remote sensing, *Environ. Pollut.*, 221, 94–104, <https://doi.org/10.1016/j.envpol.2016.11.043>, 2017.
- Guo, H., Campuzano-Jost, P., Nault, B. A., Day, D. A., Schroder, J. C., Kim, D., Dibb, J. E., Dollner, M., Weinzierl, B., and Jimenez, J. L.: The importance of size ranges in aerosol instrument intercomparisons: a case study for the Atmospheric Tomography Mission, *Atmos. Meas. Tech.*, 14, 3631–3655, <https://doi.org/10.5194/amt-14-3631-2021>, 2021.
- Hair, J. W., Hostetler, C. A., Cook, A. L., Harper, D. B., Ferrare, R. A., Mack, T. L., Welch, W., Izquierdo, L. R., and Hovis, F. E.: Airborne High Spectral Resolution Lidar for profiling aerosol optical properties, *Appl. Opt.*, 47, 6734–6752, <https://doi.org/10.1364/AO.47.006734>, 2008.
- Hammer, M. S., van Donkelaar, A., Li, C., Lyapustin, A., Sayer, A. M., Hsu, N. C., Levy, R. C., Garay, M., Kalashnikova, O., Kahn, R. A., Brauer, M., Apte, J. S., Henze, D. K., Zhang, L., Zhang, Q., Ford, B., Pierce, J. R., and Martin, R. V.: Global Estimates and Long-Term Trends of Fine Particulate Matter Concentrations (1998–2018), *Environ. Sci. Technol.*, 54, 7879–7890, <https://doi.org/10.1021/acs.est.0c01764>, 2020.

- Hu, X., Belle, J. H., Meng, X., Wildani, A., Waller, L. A., Strickland, M. J., and Liu, Y.: Estimating PM_{2.5} Concentrations in the Conterminous United States Using the Random Forest Approach, *Environ. Sci. Technol.*, 51, 6936–6944, <https://doi.org/10.1021/acs.est.7b01210>, 2017.
- Hudman, R. C., Moore, N. E., Mebust, A. K., Martin, R. V., Russell, A. R., Valin, L. C., and Cohen, R. C.: Steps towards a mechanistic model of global soil nitric oxide emissions: implementation and space based-constraints, *Atmos. Chem. Phys.*, 12, 7779–7795, <https://doi.org/10.5194/acp-12-7779-2012>, 2012.
- Jaeglé, L., Quinn, P. K., Bates, T. S., Alexander, B., and Lin, J.-T.: Global distribution of sea salt aerosols: new constraints from in situ and remote sensing observations, *Atmos. Chem. Phys.*, 11, 3137–3157, <https://doi.org/10.5194/acp-11-3137-2011>, 2011.
- Jaeglé, L., Shah, V., Thornton, J. A., Lopez-Hilfiker, F. D., Lee, B. H., McDuffie, E. E., Fibiger, D., Brown, S. S., Veres, P., Sparks, T. L., Ebben, C. J., Wooldridge, P. J., Kenagy, H. S., Cohen, R. C., Weinheimer, A. J., Campos, T. L., Montzka, D. D., Digangi, J. P., Wolfe, G. M., Hanisco, T., Schroder, J. C., Campuzano-Jost, P., Day, D. A., Jimenez, J. L., Sullivan, A. P., Guo, H., and Weber, R. J.: Nitrogen Oxides Emissions, Chemistry, Deposition, and Export Over the Northeast United States During the WINTER Aircraft Campaign, *J. Geophys. Res.-Atmos.*, 123, 12368–312393, <https://doi.org/10.1029/2018JD029133>, 2018.
- Jeong, J. I., Park, R. J., and Youn, D.: Effects of Siberian forest fires on air quality in East Asia during May 2003 and its climate implication, *Atmos. Environ.*, 42, 8910–8922, <https://doi.org/10.1016/j.atmosenv.2008.08.037>, 2008.
- Jordan, C. E., Crawford, J. H., Beyersdorf, A. J., Eck, T. F., Halliday, H. S., Nault, B. A., Chang, L.-S., Park, J., Park, R., and Lee, G.: Investigation of factors controlling PM_{2.5} variability across the South Korean Peninsula during KORUS-AQ, *Elementa-Sci. Anthropol.*, 8, 28, <https://doi.org/10.1525/elementa.424>, 2020.
- Kim, H., Zhang, Q., and Heo, J.: Influence of intense secondary aerosol formation and long-range transport on aerosol chemistry and properties in the Seoul Metropolitan Area during spring time: results from KORUS-AQ, *Atmos. Chem. Phys.*, 18, 7149–7168, <https://doi.org/10.5194/acp-18-7149-2018>, 2018.
- Kumar, R., Delle Monache, L., Bresch, J., Saide, P. E., Tang, Y., Liu, Z., da Silva, A. M., Alessandrini, S., Pfister, G., Edwards, D., Lee, P., and Djalalova, I.: Toward Improving Short-Term Predictions of Fine Particulate Matter Over the United States Via Assimilation of Satellite Aerosol Optical Depth Retrievals, *J. Geophys. Res.-Atmos.*, 124, 2753–2773, <https://doi.org/10.1029/2018JD029009>, 2019.
- Korea Environment Corporation (KEC): PM_{2.5} and PM₁₀ datasets in South Korea, [data set], available at: https://www.airkorea.or.kr/web/last_amb_hour_data?pMENU_NO=123, last access: 12 March 2021.
- Lamb, K. D., Perring, A. E., Samset, B., Peterson, D., Davis, S., Anderson, B. E., Beyersdorf, A., Blake, D. R., Campuzano-Jost, P., Corr, C. A., Diskin, G. S., Kondo, Y., Moteki, N., Nault, B. A., Oh, J., Park, M., Pusede, S. E., Simpson, I. J., Thornhill, K. L., Wisthaler, A., and Schwarz, J. P.: Estimating Source Region Influences on Black Carbon Abundance, Microphysics, and Radiative Effect Observed Over South Korea, *J. Geophys. Res.-Atmos.*, 123, 13527–513548, <https://doi.org/10.1029/2018JD029257>, 2018.
- Latimer, R. N. C. and Martin, R. V.: Interpretation of measured aerosol mass scattering efficiency over North America using a chemical transport model, *Atmos. Chem. Phys.*, 19, 2635–2653, <https://doi.org/10.5194/acp-19-2635-2019>, 2019.
- Lee, W., Lim, T., and Kim, D. D.: Thermal and Energy Performance Assessment of the Prefab Electric Ondol System for Floor Heating in a Residential Building, *Energies*, 13, 5723, <https://doi.org/10.3390/en13215723>, 2020.
- Lennartson, E. M., Wang, J., Gu, J., Castro Garcia, L., Ge, C., Gao, M., Choi, M., Saide, P. E., Carmichael, G. R., Kim, J., and Janz, S. J.: Diurnal variation of aerosol optical depth and PM_{2.5} in South Korea: a synthesis from AERONET, satellite (GOCI), KORUS-AQ observation, and the WRF-Chem model, *Atmos. Chem. Phys.*, 18, 15125–15144, <https://doi.org/10.5194/acp-18-15125-2018>, 2018.
- Li, K., Liao, H., Zhu, J., and Moch Jonathan, M.: Implications of RCP emissions on future PM_{2.5} air quality and direct radiative forcing over China, *J. Geophys. Res.-Atmos.*, 121, 12985–913008, <https://doi.org/10.1002/2016JD025623>, 2016.
- Li, Z., Guo, J., Ding, A., Liao, H., Liu, J., Sun, Y., Wang, T., Xue, H., Zhang, H., and Zhu, B.: Aerosol and boundary-layer interactions and impact on air quality, *Natl. Sci. Rev.*, 4, 810–833, <https://doi.org/10.1093/nsr/nwx117>, 2017.
- Lim, H., Choi, M., Kim, J., Kasai, Y., and Chan, P.: AHI/Himawari-8 Yonsei Aerosol Retrieval (YAER): Algorithm, Validation and Merged Products, *Remote Sens.*, 10, 699, <https://doi.org/10.3390/rs10050699>, 2018.
- Lim, H., Go, S., Kim, J., Choi, M., Lee, S., Song, C.-K., and Kasai, Y.: Integration of GOCI and AHI Yonsei aerosol optical depth products during the 2016 KORUS-AQ and 2018 EMeRGe campaigns, *Atmos. Meas. Tech.*, 14, 4575–4592, <https://doi.org/10.5194/amt-14-4575-2021>, 2021.
- Lin, J. and McElroy, M. B.: Impacts of boundary layer mixing on pollutant vertical profiles in the lower troposphere: Implications to satellite remote sensing, *Atmos. Environ.*, 44, 1726–1739, <https://doi.org/10.1016/j.atmosenv.2010.02.009>, 2010.
- Liu, H., Jacob, D. J., Bey, I., and Yantosca, R. M.: Constraints from ²¹⁰Pb and ⁷Be on wet deposition and transport in a global three-dimensional chemical tracer model driven by assimilated meteorological fields, *J. Geophys. Res.-Atmos.*, 106, 12109–12128, <https://doi.org/10.1029/2000JD900839>, 2001.
- Liu, H., Jacob Daniel, J., Bey, I., Yantosca Robert, M., Duncan Bryan, N., and Sachse Glen, W.: Transport pathways for Asian pollution outflow over the Pacific: Interannual and seasonal variations, *J. Geophys. Res.-Atmos.*, 108, 8786, <https://doi.org/10.1029/2002JD003102>, 2003.
- Liu, P., Zhao, C., Liu, P., Deng, Z., Huang, M., Ma, X., and Tie, X.: Aircraft study of aerosol vertical distributions over Beijing and their optical properties, *Tellus B*, 61, 756–767, <https://doi.org/10.1111/j.1600-0889.2009.00440.x>, 2009.
- Liu, Y., Park, R. J., Jacob, D. J., Li, Q., Kilaru, V., and Sarnat, J. A.: Mapping annual mean ground-level PM_{2.5} concentrations using Multiangle Imaging Spectroradiometer aerosol optical thickness over the contiguous United States, *J. Geophys. Res.-Atmos.*, 109, D22206, <https://doi.org/10.1029/2004JD005025>, 2004.
- Luo, G., Yu, F., and Schwab, J.: Revised treatment of wet scavenging processes dramatically improves GEOS-Chem 12.0.0 simulations of surface nitric acid, nitrate, and ammonium

- over the United States, *Geosci. Model Dev.*, 12, 3439–3447, <https://doi.org/10.5194/gmd-12-3439-2019>, 2019.
- Luo, G., Yu, F., and Moch, J. M.: Further improvement of wet process treatments in GEOS-Chem v12.6.0: impact on global distributions of aerosols and aerosol precursors, *Geosci. Model Dev.*, 13, 2879–2903, <https://doi.org/10.5194/gmd-13-2879-2020>, 2020.
- Martin, R. V., Jacob, D. J., Yantosca, R. M., Chin, M., and Ginoux, P.: Global and regional decreases in tropospheric oxidants from photochemical effects of aerosols, *J. Geophys. Res.-Atmos.*, 108, 4097, <https://doi.org/10.1029/2002JD002622>, 2003.
- McNaughton, C. S., Clarke, A. D., Howell, S. G., Pinkerton, M., Anderson, B., Thornhill, L., Hudgins, C., Winstead, E., Dibb, J. E., Scheuer, E., and Maring, H.: Results from the DC-8 Inlet Characterization Experiment (DICE): Airborne Versus Surface Sampling of Mineral Dust and Sea Salt Aerosols, *Aerosol Sci. Tech.*, 41, 136–159, <https://doi.org/10.1080/02786820601118406>, 2007.
- McNaughton, C. S., Clarke, A. D., Kapustin, V., Shinozuka, Y., Howell, S. G., Anderson, B. E., Winstead, E., Dibb, J., Scheuer, E., Cohen, R. C., Wooldridge, P., Perring, A., Huey, L. G., Kim, S., Jimenez, J. L., Dunlea, E. J., DeCarlo, P. F., Wennberg, P. O., Crouse, J. D., Weinheimer, A. J., and Flocke, F.: Observations of heterogeneous reactions between Asian pollution and mineral dust over the Eastern North Pacific during INTEX-B, *Atmos. Chem. Phys.*, 9, 8283–8308, <https://doi.org/10.5194/acp-9-8283-2009>, 2009.
- Meng, J., Martin, R. V., Ginoux, P., Hammer, M., Sulprizio, M. P., Ridley, D. A., and van Donkelaar, A.: Grid-independent high-resolution dust emissions (v1.0) for chemical transport models: application to GEOS-Chem (12.5.0), *Geosci. Model Dev.*, 14, 4249–4260, <https://doi.org/10.5194/gmd-14-4249-2021>, 2021.
- Miao, R., Chen, Q., Zheng, Y., Cheng, X., Sun, Y., Palmer, P. I., Shrivastava, M., Guo, J., Zhang, Q., Liu, Y., Tan, Z., Ma, X., Chen, S., Zeng, L., Lu, K., and Zhang, Y.: Model bias in simulating major chemical components of PM_{2.5} in China, *Atmos. Chem. Phys.*, 20, 12265–12284, <https://doi.org/10.5194/acp-20-12265-2020>, 2020.
- Murray, L. T., Jacob, D. J., Logan, J. A., Hudman, R. C., and Koshak, W. J.: Optimized regional and interannual variability of lightning in a global chemical transport model constrained by LIS/OTD satellite data, *J. Geophys. Res.-Atmos.*, 117, D20307, <https://doi.org/10.1029/2012JD017934>, 2012.
- Nault, B. A., Campuzano-Jost, P., Day, D. A., Schroder, J. C., Anderson, B., Beyersdorf, A. J., Blake, D. R., Brune, W. H., Choi, Y., Corr, C. A., de Gouw, J. A., Dibb, J., DiGangi, J. P., Diskin, G. S., Fried, A., Huey, L. G., Kim, M. J., Knote, C. J., Lamb, K. D., Lee, T., Park, T., Pusede, S. E., Scheuer, E., Thornhill, K. L., Woo, J.-H., and Jimenez, J. L.: Secondary organic aerosol production from local emissions dominates the organic aerosol budget over Seoul, South Korea, during KORUS-AQ, *Atmos. Chem. Phys.*, 18, 17769–17800, <https://doi.org/10.5194/acp-18-17769-2018>, 2018.
- O'Neill, N. T., Eck, T. F., Smirnov, A., Holben, B. N., and Thulasiraman, S.: Spectral discrimination of coarse and fine mode optical depth, *J. Geophys. Res.-Atmos.*, 108, 4559, <https://doi.org/10.1029/2002JD002975>, 2003.
- Pai, S. J., Heald, C. L., Pierce, J. R., Farina, S. C., Marais, E. A., Jimenez, J. L., Campuzano-Jost, P., Nault, B. A., Middlebrook, A. M., Coe, H., Shilling, J. E., Bahreini, R., Dingle, J. H., and Vu, K.: An evaluation of global organic aerosol schemes using airborne observations, *Atmos. Chem. Phys.*, 20, 2637–2665, <https://doi.org/10.5194/acp-20-2637-2020>, 2020.
- Park, R. J., Oak, Y. J., Emmons, L. K., Kim, C.-H., Pfister, G. G., Carmichael, G. R., Saide, P. E., Cho, S.-Y., Kim, S., Woo, J.-H., Crawford, J. H., Gaubert, B., Lee, H.-J., Park, S.-Y., Jo, Y.-J., Gao, M., Tang, B., Stanier, C. O., Shin, S. S., Park, H. Y., Bae, C., and Kim, E.: Multi-model intercomparisons of air quality simulations for the KORUS-AQ campaign, *Elementa-Sci. Anthropol.*, 9, 00139, <https://doi.org/10.1525/elementa.2021.00139>, 2021.
- Park, R. J., Jacob Daniel, J., Field Brendan, D., Yantosca Robert, M., and Chin, M.: Natural and transboundary pollution influences on sulfate-nitrate-ammonium aerosols in the United States: Implications for policy, *J. Geophys. Res.-Atmos.*, 109, D15204, <https://doi.org/10.1029/2003JD004473>, 2004.
- Pendergrass, D. C., Jacob, D. J., Zhai, S., Kim, J., Koo, J.-H., Lee, S., Bae, M., and Kim, S.: Continuous mapping of fine particulate matter (PM_{2.5}) air quality in East Asia at daily 6 × 6 km² resolution by application of a random forest algorithm to 2011–2019 GOCI geostationary satellite data, *Atmos. Meas. Tech. Discuss.* [preprint], <https://doi.org/10.5194/amt-2021-273>, in review, 2021.
- Peterson, D. A., Hyer, E. J., Han, S.-O., Crawford, J. H., Park, R. J., Holz, R., Kuehn, R. E., Eloranta, E., Knote, C., Jordan, C. E., and Lefer, B. L.: Meteorology influencing springtime air quality, pollution transport, and visibility in Korea, *Elementa-Sci. Anthropol.*, 7, 57, <https://doi.org/10.1525/elementa.395>, 2019.
- Philip, S., Martin, R. V., Snider, G., Weagle, C. L., van Donkelaar, A., Brauer, M., Henze, D. K., Klimont, Z., Venkataraman, C., and Guttikunda, S. K.: Anthropogenic fugitive, combustion and industrial dust is a significant, underrepresented fine particulate matter source in global atmospheric models, *Environ. Res. Lett.*, 12, 044018, <https://doi.org/10.1088/1748-9326/aa65a4>, 2017.
- Podolske, J. R., Sachse, G. W., and Diskin, G. S.: Calibration and data retrieval algorithms for the NASA Langley/Ames Diode Laser Hygrometer for the NASA Transport and Chemical Evolution Over the Pacific (TRACE-P) mission, *J. Geophys. Res.-Atmos.*, 108, 8792, <https://doi.org/10.1029/2002JD003156>, 2003.
- Pye, H. O. T., Liao, H., Wu, S., Mickley, L. J., Jacob, D. J., Henze, D. K., and Seinfeld, J. H.: Effect of changes in climate and emissions on future sulfate-nitrate-ammonium aerosol levels in the United States, *J. Geophys. Res.-Atmos.*, 114, D01205, <https://doi.org/10.1029/2008JD010701>, 2009.
- Qu, W., Wang, J., Zhang, X., Sheng, L., and Wang, W.: Opposite seasonality of the aerosol optical depth and the surface particulate matter concentration over the north China Plain, *Atmos. Environ.*, 127, 90–99, <https://doi.org/10.1016/j.atmosenv.2015.11.061>, 2016.
- Ridley, D. A., Heald, C. L., Kok, J. F., and Zhao, C.: An observationally constrained estimate of global dust aerosol optical depth, *Atmos. Chem. Phys.*, 16, 15097–15117, <https://doi.org/10.5194/acp-16-15097-2016>, 2016.
- Saide, P. E., Kim, J., Song, C. H., Choi, M., Cheng, Y., and Carmichael, G. R.: Assimilation of next generation geostationary aerosol optical depth retrievals to improve air quality simulations, *Geophys. Res. Lett.*, 41, 9188–9196, <https://doi.org/10.1002/2014GL062089>, 2014.

- Saide, P. E., Gao, M., Lu, Z., Goldberg, D. L., Streets, D. G., Woo, J.-H., Beyersdorf, A., Corr, C. A., Thornhill, K. L., Anderson, B., Hair, J. W., Nehrir, A. R., Diskin, G. S., Jimenez, J. L., Nault, B. A., Campuzano-Jost, P., Dibb, J., Heim, E., Lamb, K. D., Schwarz, J. P., Perring, A. E., Kim, J., Choi, M., Holben, B., Pfister, G., Hodzic, A., Carmichael, G. R., Emmons, L., and Crawford, J. H.: Understanding and improving model representation of aerosol optical properties for a Chinese haze event measured during KORUS-AQ, *Atmos. Chem. Phys.*, 20, 6455–6478, <https://doi.org/10.5194/acp-20-6455-2020>, 2020.
- Scarino, A. J., Omland, M. D., Fast, J. D., Burton, S. P., Ferrare, R. A., Hostetler, C. A., Berg, L. K., Lefer, B., Haman, C., Hair, J. W., Rogers, R. R., Butler, C., Cook, A. L., and Harper, D. B.: Comparison of mixed layer heights from airborne high spectral resolution lidar, ground-based measurements, and the WRF-Chem model during CalNex and CARES, *Atmos. Chem. Phys.*, 14, 5547–5560, <https://doi.org/10.5194/acp-14-5547-2014>, 2014.
- Sekiyama, T. T., Tanaka, T. Y., Shimizu, A., and Miyoshi, T.: Data assimilation of CALIPSO aerosol observations, *Atmos. Chem. Phys.*, 10, 39–49, <https://doi.org/10.5194/acp-10-39-2010>, 2010.
- Seinfeld, J. H. and Pandis, S. N.: *Atmospheric Chemistry and Physics: From Air Pollution to Climate Change*, Third Edition, chap. 8, John Wiley & Sons, New Jersey, 2016.
- Shah, V., Jacob, D. J., Moch, J. M., Wang, X., and Zhai, S.: Global modeling of cloud water acidity, precipitation acidity, and acid inputs to ecosystems, *Atmos. Chem. Phys.*, 20, 12223–12245, <https://doi.org/10.5194/acp-20-12223-2020>, 2020.
- Su, T., Li, Z., and Kahn, R.: Relationships between the planetary boundary layer height and surface pollutants derived from lidar observations over China: regional pattern and influencing factors, *Atmos. Chem. Phys.*, 18, 15921–15935, <https://doi.org/10.5194/acp-18-15921-2018>, 2018.
- Sun, X., Yin, Y., Sun, Y., Sun, Y., Liu, W., and Han, Y.: Seasonal and vertical variations in aerosol distribution over Shijiazhuang, China, *Atmos. Environ.*, 81, 245–252, <https://doi.org/10.1016/j.atmosenv.2013.08.009>, 2013.
- Tsinghua University: Multi-resolution emission inventory for China, available at: <http://www.meicmodel.org/>, last access: 10 November 2021.
- Travis, K. R., Crawford, J. H., Chen, G., Jordan, C. E., Nault, B. A., Kim, H., Jimenez, J. L., Campuzano-Jost, P., Dibb, J. E., Woo, J. H., Kim, Y., Zhai, S., Wang, X., McDuffie, E., Luo, G., Yu, F., Kim, S., Simpson, I., Blake, D. R., Chang, L., and Kim, M. J.: Limitations in representation of physical processes prevents successful simulation of PM_{2.5} during KORUS-AQ, *Atmos. Chem. Phys.*, submitted, 2021.
- van der Werf, G. R., Randerson, J. T., Giglio, L., van Leeuwen, T. T., Chen, Y., Rogers, B. M., Mu, M., van Marle, M. J. E., Morton, D. C., Collatz, G. J., Yokelson, R. J., and Kasibhatla, P. S.: Global fire emissions estimates during 1997–2016, *Earth Syst. Sci. Data*, 9, 697–720, <https://doi.org/10.5194/essd-9-697-2017>, 2017.
- van Donkelaar, A., Martin, R. V., and Park, R. J.: Estimating ground-level PM_{2.5} using aerosol optical depth determined from satellite remote sensing, *J. Geophys. Res.-Atmos.*, 111, D21201, <https://doi.org/10.1029/2005JD006996>, 2006.
- van Donkelaar, A., Martin Randall, V., Brauer, M., and Boys Brian, L.: Use of Satellite Observations for Long-Term Exposure Assessment of Global Concentrations of Fine Particulate Matter, *Environ. Health Persp.*, 123, 135–143, <https://doi.org/10.1289/ehp.1408646>, 2015.
- van Donkelaar, A., Martin, R. V., Brauer, M., Hsu, N. C., Kahn, R. A., Levy, R. C., Lyapustin, A., Sayer, A. M., and Winker, D. M.: Global Estimates of Fine Particulate Matter using a Combined Geophysical-Statistical Method with Information from Satellites, Models, and Monitors, *Environ. Sci. Technol.*, 50, 3762–3772, <https://doi.org/10.1021/acs.est.5b05833>, 2016.
- van Donkelaar, A., Martin, R. V., Li, C., and Burnett, R. T.: Regional Estimates of Chemical Composition of Fine Particulate Matter Using a Combined Geoscience-Statistical Method with Information from Satellites, Models, and Monitors, *Environ. Sci. Technol.*, 53, 2595–2611, <https://doi.org/10.1021/acs.est.8b06392>, 2019.
- Wang, Q., Jacob, D. J., Fisher, J. A., Mao, J., Leibensperger, E. M., Carouge, C. C., Le Sager, P., Kondo, Y., Jimenez, J. L., Cubison, M. J., and Doherty, S. J.: Sources of carbonaceous aerosols and deposited black carbon in the Arctic in winter-spring: implications for radiative forcing, *Atmos. Chem. Phys.*, 11, 12453–12473, <https://doi.org/10.5194/acp-11-12453-2011>, 2011.
- Wang, Q., Jacob, D. J., Spackman, J. R., Perring, A. E., Schwarz, J. P., Moteki, N., Marais, E. A., Ge, C., Wang, J., and Barrett, S. R. H.: Global budget and radiative forcing of black carbon aerosol: Constraints from pole-to-pole (HIPPO) observations across the Pacific, *J. Geophys. Res.-Atmos.*, 119, 195–206, <https://doi.org/10.1002/2013JD020824>, 2014.
- Wang, X., Heald, C. L., Ridley, D. A., Schwarz, J. P., Spackman, J. R., Perring, A. E., Coe, H., Liu, D., and Clarke, A. D.: Exploiting simultaneous observational constraints on mass and absorption to estimate the global direct radiative forcing of black carbon and brown carbon, *Atmos. Chem. Phys.*, 14, 10989–11010, <https://doi.org/10.5194/acp-14-10989-2014>, 2014.
- Wang, Y., Zhang, Q., Jiang, J., Zhou, W., Wang, B., He, K., Duan, F., Zhang, Q., Philip, S., and Xie, Y.: Enhanced sulfate formation during China's severe winter haze episode in January 2013 missing from current models, *J. Geophys. Res.-Atmos.*, 119, 10425–41044, <https://doi.org/10.1002/2013JD021426>, 2014.
- Wei, J., Li, Z., Pinker, R. T., Wang, J., Sun, L., Xue, W., Li, R., and Cribb, M.: Himawari-8-derived diurnal variations in ground-level PM_{2.5} pollution across China using the fast space-time Light Gradient Boosting Machine (LightGBM), *Atmos. Chem. Phys.*, 21, 7863–7880, <https://doi.org/10.5194/acp-21-7863-2021>, 2021a.
- Wei, J., Li, Z., Lyapustin, A., Sun, L., Peng, Y., Xue, W., Su, T., and Cribb, M.: Reconstructing 1-km-resolution high-quality PM_{2.5} data records from 2000 to 2018 in China: spatiotemporal variations and policy implications, *Remote Sens. Environ.*, 252, 112136, <https://doi.org/10.1016/j.rse.2020.112136>, 2021b.
- Woo, J.-H., Kim, Y., Kim, H.-K., Choi, K.-C., Eum, J.-H., Lee, J.-B., Lim, J.-H., Kim, J., and Seong, M.: Development of the CREATE Inventory in Support of Integrated Climate and Air Quality Modeling for Asia, *Sustainability*, 12, 7930, <https://doi.org/10.3390/su12197930>, 2020.
- Xiao, Q., Chang, H. H., Geng, G., and Liu, Y.: An Ensemble Machine-Learning Model To Predict Historical PM_{2.5} Concentrations in China from Satellite Data, *Environ. Sci. Technol.*, 52, 13260–13269, <https://doi.org/10.1021/acs.est.8b02917>, 2018.
- Xu, J., Han, F., Li, M., Zhang, Z., Xiaohui, D., and Wei, P.: On the opposite seasonality of MODIS AOD and surface PM_{2.5}

- over the Northern China plain, *Atmos. Environ.*, 215, 116909, <https://doi.org/10.1016/j.atmosenv.2019.116909>, 2019.
- Xu, J.-W., Martin, R. V., van Donkelaar, A., Kim, J., Choi, M., Zhang, Q., Geng, G., Liu, Y., Ma, Z., Huang, L., Wang, Y., Chen, H., Che, H., Lin, P., and Lin, N.: Estimating ground-level PM_{2.5} in eastern China using aerosol optical depth determined from the GOCI satellite instrument, *Atmos. Chem. Phys.*, 15, 13133–13144, <https://doi.org/10.5194/acp-15-13133-2015>, 2015.
- Xue, T., Zheng, Y., Tong, D., Zheng, B., Li, X., Zhu, T., and Zhang, Q.: Spatiotemporal continuous estimates of PM_{2.5} concentrations in China, 2000–2016: A machine learning method with inputs from satellites, chemical transport model, and ground observations, *Environ. Int.*, 123, 345–357, <https://doi.org/10.1016/j.envint.2018.11.075>, 2019.
- Zhai, S., Jacob, D. J., Wang, X., Shen, L., Li, K., Zhang, Y., Gui, K., Zhao, T., and Liao, H.: Fine particulate matter (PM_{2.5}) trends in China, 2013–2018: separating contributions from anthropogenic emissions and meteorology, *Atmos. Chem. Phys.*, 19, 11031–11041, <https://doi.org/10.5194/acp-19-11031-2019>, 2019.
- Zhai, S., Jacob, D. J., Wang, X., Liu, Z., Wen, T., Shah, V., Li, K., Moch, J. M., Bates, K. H., Song, S., Shen, L., Zhang, Y., Luo, G., Yu, F., Sun, Y., Wang, L., Qi, M., Tao, J., Gui, K., Xu, H., Zhang, Q., Zhao, T., Wang, Y., Lee, H. C., Choi, H., and Liao, H.: Control of particulate nitrate air pollution in China, *Nat. Geosci.*, 14, 389–395, <https://doi.org/10.1038/s41561-021-00726-z>, 2021.
- Zhang, L., Gong, S., Padro, J., and Barrie, L.: A size-segregated particle dry deposition scheme for an atmospheric aerosol module, *Atmos. Environ.*, 35, 549–560, [https://doi.org/10.1016/S1352-2310\(00\)00326-5](https://doi.org/10.1016/S1352-2310(00)00326-5), 2001.
- Zhang, L., Kok, J. F., Henze, D. K., Li, Q., and Zhao, C.: Improving simulations of fine dust surface concentrations over the western United States by optimizing the particle size distribution, *Geophys. Res. Lett.*, 40, 3270–3275, <https://doi.org/10.1002/grl.50591>, 2013.
- Zhang, Q., Zhao, C., Tie, X., Wei, Q., Huang, M., Li, G., Ying, Z., and Li, C.: Characterizations of aerosols over the Beijing region: A case study of aircraft measurements, *Atmos. Environ.*, 40, 4513–4527, <https://doi.org/10.1016/j.atmosenv.2006.04.032>, 2006.
- Zhang, Q., Ma, X., Tie, X., Huang, M., and Zhao, C.: Vertical distributions of aerosols under different weather conditions: Analysis of in-situ aircraft measurements in Beijing, China, *Atmos. Environ.*, 43, 5526–5535, <https://doi.org/10.1016/j.atmosenv.2009.05.037>, 2009.
- Zhang, X., Wang, H., Che, H.-Z., Tan, S.-C., Shi, G.-Y., and Yao, X.-P.: The impact of aerosol on MODIS cloud detection and property retrieval in seriously polluted East China, *Sci. Total Environ.*, 711, 134634, <https://doi.org/10.1016/j.scitotenv.2019.134634>, 2020.
- Zheng, B., Tong, D., Li, M., Liu, F., Hong, C., Geng, G., Li, H., Li, X., Peng, L., Qi, J., Yan, L., Zhang, Y., Zhao, H., Zheng, Y., He, K., and Zhang, Q.: Trends in China's anthropogenic emissions since 2010 as the consequence of clean air actions, *Atmos. Chem. Phys.*, 18, 14095–14111, <https://doi.org/10.5194/acp-18-14095-2018>, 2018.
- Ziemba, L. D., Lee Thornhill, K., Ferrare, R., Barrick, J., Beyersdorf, A. J., Chen, G., Crumeyrolle, S. N., Hair, J., Hostetler, C., Hudgins, C., Obland, M., Rogers, R., Scarino, A. J., Winstead, E. L., and Anderson, B. E.: Airborne observations of aerosol extinction by in situ and remote-sensing techniques: Evaluation of particle hygroscopicity, *Geophys. Res. Lett.*, 40, 417–422, <https://doi.org/10.1029/2012GL054428>, 2013.