

Parkland College

SPARK: Scholarship at Parkland

Prospectus 2012

The Prospectus

2-29-2012

Prospectus, February 29, 2012

Briana Kay Stodden
Parkland College

Buster Bytes
Parkland College

Chanelle Stokes
Parkland College

Mark Roughton
Parkland College

Parkland Marketing and Public Relations
Parkland College

See next page for additional authors

Follow this and additional works at: https://spark.parkland.edu/prospectus_2012



Part of the [Journalism Studies Commons](#), and the [Mass Communication Commons](#)

Recommended Citation

Stodden, Briana Kay; Bytes, Buster; Stokes, Chanelle; Roughton, Mark; and Public Relations, Parkland Marketing; and Brown, Spencer, "Prospectus, February 29, 2012" (2012). *Prospectus 2012*. 7.
https://spark.parkland.edu/prospectus_2012/7

Open access to this Book is brought to you by Parkland College's institutional repository, [SPARK: Scholarship at Parkland](#). For more information, please contact spark@parkland.edu.

Authors

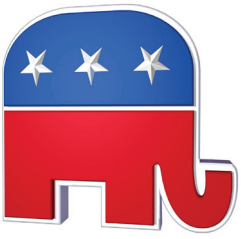
Briana Kay Stodden, Buster Bytes, Chanelle Stokes, Mark Roughton, Parkland Marketing and Public Relations, and Spencer Brown



Prospectus News

Free

Top Stories



The GOP Puzzle: a look at some of the fractured segments of the republican party.

News - Page 2



Harvard study links good teachers to lasting gain.

Opinions - Page 4



Buster Bytes tells us about Parkland's new Wi-Fi upgrade.

Lifestyle - Page 3



Cobras baseball ready for 2012 season. Also, Cobra softball preview.

Coverage - Page 7



Angelina Jolie at the Oscars: The leg that roared.

Full Story - Page 8

- Newsroom -
(217) 351-2216
prospectus@parkland.edu

- Publications Mgr -
Sean Hermann
(217) 351-2216
prospectus.editor@gmail.com

- Advisor -
John Eby
(217) 353-2627
jeby@parkland.edu

- Advertising -
Linda Tichenor
(217) 351-2206
prospectusads@parkland.edu

News - 2
Lifestyle - 3
Opinions - 4
Puzzles/Comics - 6
Sports - 7
Entertainment - 8

Parkland Police are freezin' for a reason



Photo courtesy of Bonita Burgess

On Saturday Feb. 25, 2012, the Parkland Police Plungers, participated in the annual Law Enforcement Torch Run Polar Plunge. By running into the ice cold water at the Lake of the Woods Forest Preserve in Mahomet, the team raised over \$2,500 for the Special Olympics of Illinois. L to R Nicole Meyer, Officer Matt Kopmann, Officer Angie Corray, Dispatcher Sarah Siedelmann, Officer Jared Ping, Parkland faculty member Richard Rudasill and two family members of the team also participated.

PN Briana Kay Stodden
Staff Writer

On Saturday, several Parkland police officers and staff members participated in the annual Law Enforcement Torch Run Polar Plunge, which took place in Mahomet at the Lake of the Woods Forest Preserve. The Plunge was held to raise money to benefit the Special Olympics of Illinois.

Parkland's team, the Parkland Police Plungers, raised over \$2,500 for the cause. Officer Matt Kopmann, team captain, hosted the team this year and started the first

team web page for collecting contributions for the event. "It's a fun activity for a really good cause. I guess you could say we really were freezin' for a reason!" Kopmann said.

The event featured 400 plungers who helped to raise a total of over \$60,000 for the cause. Several area businesses helped to sponsor the event. Many local residents, including friends and family members of the participants, came to watch the plungers jump into the cold water.

After the plunge, each participant received a Polar Plunge hooded sweatshirt

and was served lunch in the Lake of the Woods Pavilion. They were also entered into a raffle for a chance to win the grand prize of a vacation to Riu Negril, Jamaica, courtesy of Apple Vacations.

According to the Special Olympics of Illinois website, their mission is to provide "year-round sports training and competition in a variety of Olympic-type sports for children and adults with intellectual disabilities by giving them continuing opportunities to develop physical fitness, demonstrate courage, experience joy, and

participate in a sharing of gifts, skills and friendship with their families, other Special Olympics athletes and the community." The organization supports nearly 21,000 athletes with intellectual disabilities and more than 6,000 young athletes with ages ranging from two to seven.

The Parkland Police Plungers have done this for years now and plan to participate again next year, but pointed out that there are several other plunges coming up if anyone is interested in trying it out. Those who would like to help out this worthy

cause without jumping in ice cold water can do so by attending the upcoming 2012 Special Olympics Illinois Basketball tournament. The event takes place March 16 - 18, at the Horton Fieldhouse at Illinois State University in Normal, and Shirk Center at Illinois Wesleyan University in Bloomington. Proceeds from this event will go to support the cause. More information about these events can be found at <http://www.soill.org/events.php>



Photo by John Long/Hartford Courant/MCT

The Blarney Stone is set in the battlements of Ireland's Blarney Castle. Legend has it that you can gain the gift of eloquence if you kiss the stone.

Students to participate in Ireland study tour

Parkland Marketing and Public Relations

Visit Blarney Castle, the Cliffs of Moher, and other amazing sites near Killarney and Galway, Ireland, during Parkland College's 10-day agricultural Study Abroad opportunity this spring. The supervised course, "Study in Ireland," will take place May 20-29. Designed for students seeking field experience in international agriculture as well as those who want to take in the beauty of the Emerald Isle, the tour features visits to farms specializing in organic dairy, vegetables, beef, sheep, horses/ponies, wheat, barley, sugar beets, and more. Sightseeing to Kylemore Abbey, the Cliffs of Moher, Blarney Castle, St. Patrick's Cathedral, Ring of Kerry, and other scenic areas is included in the trip. Participants will gain firsthand knowledge of agriculture's role in international food production/trade as well as a greater understanding of how cultural and

economic diversity influences agriculture. The program fee of \$2,100 includes roundtrip airfare, room, breakfasts/dinners, tours, and ground transportation; tuition for enrollment in the Parkland class, "International Agricultural Field Experience" (AGB 192) is not included. A \$300 deposit, along with a completed application, is due by March 12. Trip participants must be 18 and older; have a valid passport; demonstrate college-level reading, writing, and math skills; and provide proof of insurance. The site tour, as it is part of a course (AGB 192), will include lectures, fieldwork, and opportunities to explore and provides three semester hours of college credit. Residents needing more information or who wish to apply for this exciting adventure should contact Don Bergfield, Study Abroad coordinator for Business and Agri-Industries, at 217/351-2406 or dbergfield@parkland.edu.

Sponsored by:



westgateapts.com

Fact or Fiction?

Lightning is hotter than the surface of the sun.

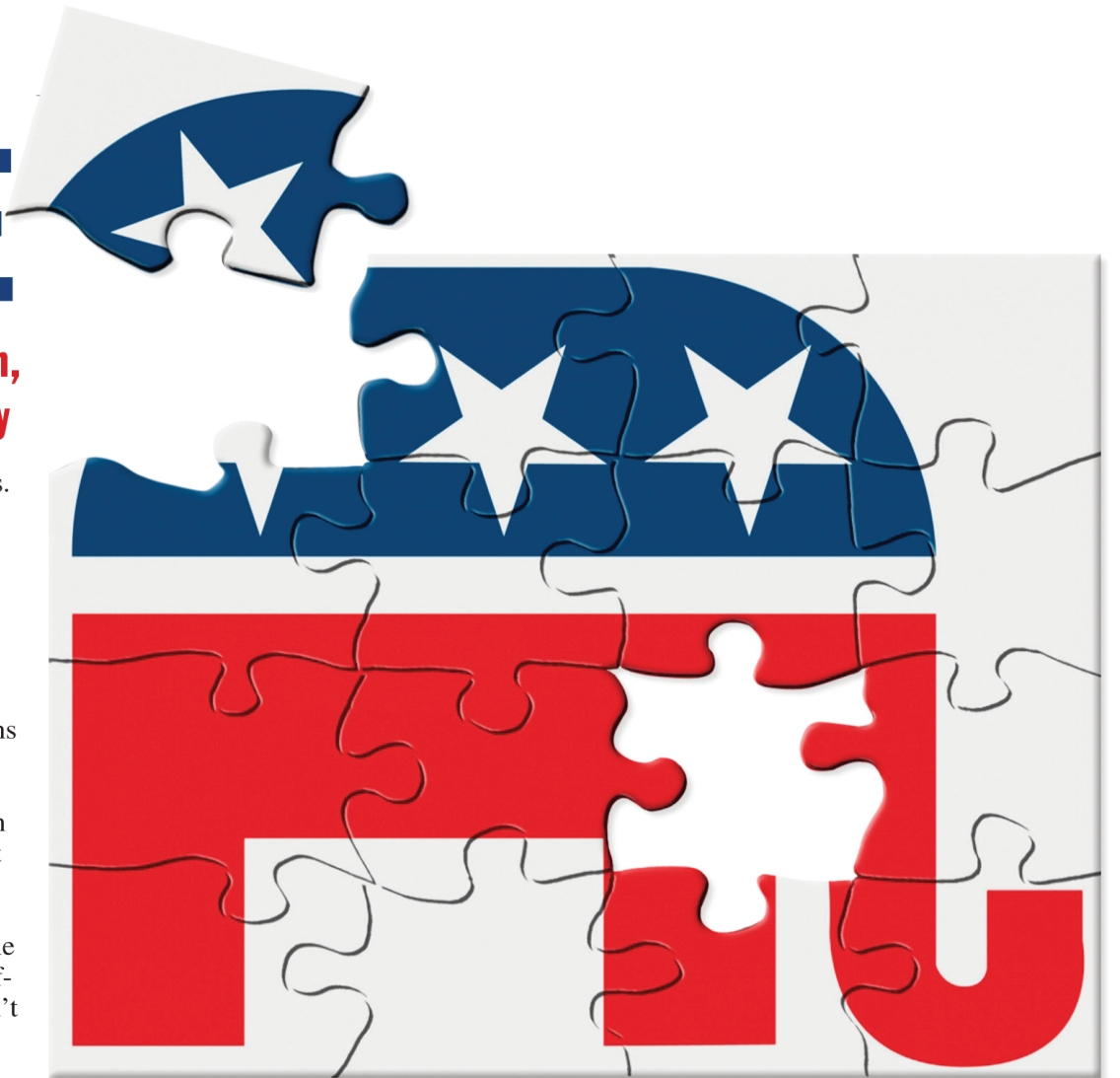
(Find answer on page 5)

Students and Staff - Show current ID and receive \$10 off application fee at Westgate Apartments

1600 W. Bradley Ave.
Champaign, IL

Open M-F 9am - 5:30pm, Sat 10am - 4pm

THE GOP PUZZLE



As candidates continue to vie for the Republican nomination, we take a look at the sometimes fractured segments of the party

By DAVID LIGHTMAN
McClatchy Newspapers

The Republican Party is hard to define. The easy part is detailing its struggles. It still has difficulty attracting big numbers of African-American voters and tends to be less popular than the Democratic Party with Hispanics.

But among its core voters — those who cast ballots in this year's GOP caucuses and primaries — the GOP includes several very different blocs. While some factions are stronger than others, none is so dominant it can choose the GOP's presidential nominee by itself.

They share one common characteristic: They're fiscal conservatives. They want deficits reduced dramatically, and fast. They want taxes lower, and they want, as Ronald Reagan used





to say, to get government off people's backs.

Beyond that, though, are different factions, some more powerful than others. Social conservatives dominate the debate, but can't agree on a single candidate. Moderates, once dubbed the "Rockefeller Republican" wing after the long-serving, big-government New York governor, are influential only in a few states. Libertarians have enough muscle to make a difference, but perhaps not enough to get their candidate elected. And blue collar and suburban voters, who want lower taxes and efficient government services, are up for grabs.



Whoever wins the party's nomination will have to cobble together a coalition of these different groups, and it won't be easy. Here's a look at the party's divisions:

JENNIFER PRITCHARD/MCT

| | WHERE? | WHO? | RECENT HERO | CURRENT FAVORITES | PREFERRED NOMINEE | KEY BELIEFS | INFLUENCE IN PARTY |
|-----------------------------|---|--|--|---|---|--|--|
| SOCIAL CONSERVATIVES | Mostly South, Rocky Mountain West, farm belt | All ages | Conservative commentator Pat Buchanan, the Rev. Pat Robertson | 2008 presidential candidate Mike Huckabee, Rick Santorum | Rick Santorum, former U.S. senator from Pennsylvania; Minnesota Rep. Michele Bachmann | Seek to emphasize role of faith in American life. Oppose abortion and gay marriage. Resent big government as intrusive; eager to see Obama health care law overturned. | Will have a strong role in writing the party's platform, but will need help to nominate their preferred candidate. |
| LIBERTARIANS | All over, but particularly in states with big independent voter blocs like Maine, Nevada, Rocky Mountain states | All ages, but notably voters under 30 and white-collar professionals | Barry Goldwater, 1964 GOP presidential nominee | Texas Rep. Ron Paul; Kentucky Sen. Rand Paul |  Rep. Ron Paul, Texas | Seek to dramatically reduce size of government. Would end what Paul calls the "dishonest, immoral and unconstitutional" Federal Reserve Board. Insists Congress declare war before sending troops into combat. | Likely to have big say on platform, but recent results suggest they'll have trouble nominating their candidate. |
| MODERATES | New England, New York, Pennsylvania, New Jersey | Usually white-collar, well-educated voters in Northeast | None since Nelson Rockefeller was prominent in the 1960s and 1970s | New Jersey Gov. Chris Christie; Maine Sens. Olympia Snowe and Susan Collins | Mitt Romney, former Massachusetts governor; Jon Huntsman, former Utah governor | Fiscally conservative, favor lower taxes, but also want a significant government role in helping poor and urban communities. Support abortion rights and gay rights. | Minimal. Most Northeast GOP moderates became Democrats long ago. |
| ESTABLISHMENT | All over, but particularly in the Midwest, Northeast and urban South | Business owners, chamber of commerce members, Wall Streeters | Presidents George H. W. Bush and Gerald Ford | House of Representatives Speaker John Boehner; Indiana Gov. Mitch Daniels |  Mitt Romney | Often called "country club Republicans," they care most about fiscal issues. Want lower taxes, particularly for business. Tend to be conservative on social issues, but willing to compromise. | Many party leaders from the Northeast and Midwest fall into this category, and often are big donors. They matter. |
| BLUE COLLAR | Rust Belt of the Upper Midwest, Pennsylvania, New York | Factory workers, middle-income service workers | President Ronald Reagan; Rep. and Housing and Urban Development Secretary Jack Kemp | Sarah Palin, 2008 GOP vice presidential nominee. | Rick Santorum; Newt Gingrich, former Speaker of the House of Representatives  Rick Santorum | Often called "Reagan Democrats," as Democratic policies on affirmative action and social issues drove them to GOP in the 1980s. Many are union workers. Often been laid off and see GOP's low-tax view as prodding businesses to hire. | More important in the general election, as they tend to be swing voters. |
| SUBURBAN | Predominantly white suburbs all over America, usually in big states like California, New York, Pennsylvania, New Jersey, Florida, Georgia | Better-educated white-collar suburbanites | President George H.W. Bush; 2008 GOP presidential nominee and Arizona Sen. John McCain | New Jersey Gov. Chris Christie; Illinois Sen. Mark Kirk; House Budget Committee Chairman Paul Ryan of Wisconsin | Mitt Romney | Crucial swing voters, who often turn out and contribute to campaigns. Want government to act efficiently and responsibly; McCain's campaign to clean up the campaign finance system in '00 was well-received. | Important bloc for GOP in general election, particularly in Southwest and Northeast. |
| NEW SOUTHERNERS | Sun Belt communities experiencing booms in last 30-odd years, notably in Florida, Georgia, Virginia, Texas, North and South Carolina | Transplants from Northeast or Rust Belt, lured by better jobs, better standard of living | Presidents Ronald Reagan and George W. Bush. | Florida Sen. Marco Rubio; South Carolina Sen. Lindsey Graham; Virginia Gov. Bob McDonnell |  Newt Gingrich | Fiscally conservative. Socially conservative and religious, but not rigid. Economic issues are most important. | Nominee needs to do well in Southern states to have any chance of winning general election. |
| TEA PARTY | All over. | Generally fiscal conservatives of all ages, often people usually not active in politics | CNBC's Rick Santelli, credited with mobilizing the movement in 2009 | Wisconsin Gov. Scott Walker; Utah Sen. Mike Lee; Kentucky Sen. Rand Paul | Michele Bachmann; Rick Santorum; Newt Gingrich; Ron Paul | Pushed hard for sharp cuts in federal spending and no increase in debt ceiling. Helped elect dozens of fiscal conservatives to Congress in 2010. | Important force in 2010. Hard to handicap in 2012, since group lacks central organization or unified mission, but is passionate about their cause. |

Lifestyle

Are people taking casual attire too far?

Angela Hill
Oakland Tribune

OAKLAND, Calif. - When the world finally collapses, it may be under a massive pile of ripped jeans from Abercrombie & Fitch.

When archeologists from space sift through our ashes on this cold dead rock, they will not find remains of the days of yore: the French cuffs, the sterling-silver tie bars, the sleek pencil skirts and silk blouses of the mid 20th century. No, those were replaced long ago with mutilated denim and logo T-shirts adopted for any occasion, devolving further into the rumpled, faded, polka-dot pajama bottoms tucked into black socks on a 42-year-old man at the Nob Hill in Alameda, Calif.

"I guess it is kinda bad, huh," he said last week, hanging his head in mock shame and chuckling at his public display of apathy - not daring to reveal his identity for fear of his wife's mortification. "Well, isn't the world supposed to end this year? Then who cares, right? I might as well be comfortable when it happens."

Somewhere along the line, especially here in the highly informal, tech-friendly Bay Area, Casual Fridays have become Casual Every Day with spiffy outfits relegated to the likes of attorneys, wait staff and TV news anchors. Fashion forward sometimes goes fashion sideways, careening over the embankment of good taste and down the slippery slope to sloppy.

"It looks like people just don't care anymore. People are very sloppy," said Armando Osorio, 35, of Berkeley, Calif., who likened current style to the "before" looks on a makeover show. He says he dresses down - but neatly - for his job at a lumber company. But when he steps out on



Photo by Laura A. Oda/Oakland Tribune/MCT
People walk to businesses, restaurants and work in downtown Oakland, Calif., Feb. 9, 2012. These days, people wear just about anything to work, play or run errands.

the weekends, it's J. Crew for casual and a suit or sport coat for special events. "Yeah, it takes a little effort to look nice. And that's the problem," he said. "We have become way, way, way too lazy."

To be sure, clothing choice depends on the occasion or line of work. You'd look loony wearing a suit to a beach party or repairing a car. And casual wear isn't inherently bad. It's less stuffy, there's room for more creativity and individuality than in decades past, and it's hands-down

much more comfortable at the office.

But those still nursing a small flame at the shrine of style say it's disappointing to see more and more holey jeans at the symphony and chic restaurants.

"I find it sad to see people in jeans at the theater," said Michael Pagan, general manager for Harry Denton's Starlight Room atop the Sir Francis Drake hotel in San Francisco, a place where it was once expected for guests to dress up for a night out. But now?

"Someone in a suit certainly wouldn't be out of place here, but you'd be surprised at what people wear," Pagan said. "Tourists you can understand. They've been on a long flight, so they come in wearing shorts and stuff. But even people out for the night - club girls dress up in the Kim Kardashian kind of little dresses, but at the same time you'll get the soccer mom type, almost to the point of wearing sweats, carrying backpacks, bad hair. The trend has gone way down for style."

Pagan equated today's fashions with texting. "These days, you have people who will always think 'laugh out loud' is spelled 'lol,'" he said. "Extrapolate that out to the way people present themselves - abbreviated style, doing what's fast and easy - and look what you get. Usually the only people in tuxedos and gowns here are us (the staff)."

One venue where common-sense fashion should surely rule the day is in a court of law. But on some doors at Wiley Manuel courthouse in Oakland, Calif., there are signs reading: "NO shorts; NO tank tops or tube tops; NO pajama pants/sweats; NO exposed stomachs."

If Perry Mason were alive - and real - this would probably kill him.

"Defendants don't care anymore. For some, it's no different than going to McDonald's," said Superior Court Judge Larry Goodman, who has presided over criminal cases for 29 years. He prefers a casual look himself, opting for golf shirts and khakis under his robes to put jurors at ease, he said. But there's casual, and then there's his pet peeve: people in saggy pants. "I told a guy the other day, 'You're already on

See DRESS on P. 5

New and improved Wi-Fi connection at Parkland

Buster Bytes
Tech Columnist



If you've logged onto Parkland's Wi-Fi lately, you may have noticed that the access login page has changed. This small difference is just the tip of the iceberg, though. Last week, the Department of Campus Technologies oversaw the completion of Phases I and II of its wireless internet upgrade.

Addressing concerns from student body, faculty and staff, the department has replaced or added access points across campus to increase both the overall coverage area and the saturation capability of the network.

Buster sat down with Doug Brooks, Associate Director of Network Support Services for the Department of Campus Technologies, to get the details about the wireless upgrade. Brooks had explained last semester that the increased number of wireless access devices being used at the college had placed a strain on the network. The department managed to increase the overall bandwidth available to the college from 100 Mbs to 150 Mbs before even beginning Phase I of this upgrade.

Brooks attributes much of the success of the project to the responses his department received from a survey at the end of last semester.

"Not only did (the responses) help to define the project, but they gave us tangible evidence to bring before the board," Brooks explained. "They were our ammunition in getting the upgrade approved." Brooks said that the department had initially approached the board about an upgrade because they were not happy with the production of the current system.

That system was comprised of 37 wireless access points running the limited 2.4 GHz band of the "b/g" standards of wireless connectivity. The goal of Phase I of the upgrade was to replace these access points with models capable of running the much faster "n" standard. The new routers are backwards compatible, meaning they are still capable of servicing devices using the "b" and "g" standards, but are also capable of "n" standard connectivity at both 2.4

and 5.0 GHz.

The new standard increases the maximum throughput of the connection from 54 Mbs to 600 Mbs. What it boils down to, is that your phone, laptop or tablet will have a much faster, more reliable connection.

Brooks added, "One interesting feature of the new devices is that they are capable of detecting whether your device is able to connect at 5 GHz. If so, they will connect you automatically on the 5 GHz channel, which is not only faster, but has less traffic as well." More good news brought on by the new system is that connecting wireless to Parkland's network no longer requires a "keep open" window.

Under the old system, your browser had to leave a separate window open the whole time you were connected or lose that connection. This made it impossible for some devices to connect altogether, and forced others off the network frequently. "With the new system, users will no longer be forced offline," Brooks explained. "So even if you turn your laptop off and back on, you won't have to log back in." Brooks said the new system will allow users to stay online for six

hours at a time.

Phase II of the wireless network upgrade brought us more access points, a lot more. The Department of Campus Technologies increased the number from 37 to 60, and has 160 more to deploy as needed. Most of the new devices have been used to increase the saturation of coverage in high usage areas. Brooks explained that the primary focus of Phase II was to increase coverage by specifically targeting the lounge areas around campus. Areas like the Gallery, Flag and TV lounges will find their coverage vastly improved.

Classrooms will receive increased access as well. Those classes with a need for Wi-Fi will receive their own access point, and those with projectors are already wired and ready for easy installation. Students or faculty who believe that their classroom needs an access

point should send an email to the STAR office at star@parkland.edu.

Those who had previously expressed concern over the Wi-Fi at Parkland will be pleased by the steps taken by the Department of Campus Technologies in response to their complaints. Already the system has supported over 500 individual users at one time with zero complaints. Brooks ended the interview by pointing out that the upgrade just goes to show that Parkland is listening.



Photo Illustration by Briana Kay Stodden/Prospectus News
Parkland College has replaced Wi-Fi access points and added new devices all across campus. The installation will increase the overall coverage area and the saturation capability of the wireless internet network.

Have you seen us online?

www.prospectusnews.com

Also on

Have a tech question?

Ask Buster Bytes!

buster@busterbytes.com

Opinions

Power is ours to fix government

McClatchy-Tribune News Service

The Congress is mostly in gridlock. The political parties - particularly the GOP - don't want to compromise, no matter how silly the impasse. The moderate center of political life seems to have disappeared, and many, many people say it is the fault of government.

But the government is us. We control it. Or we could control it if we exercised our power.

For all of the bellyaching about special-interest groups running amok and Washington being out of control, the people - if they actually took time to understand the issues, voted, and got involved in their communities - could change things. But instead, we have this:

The people who most despise government are often the ones who benefit from it the most.

In broad terms, this is the picture painted by New York Times research. Americans in many parts of the South and Southwest, including Texas, that revel in anti-government vitriol receive the greatest portion of personal income from federal sources. In California, while the liberal Bay Area gets a low percentage of its income from

the government, more goes to the conservative Central Valley and to the far northern counties that are so anti-establishment, they proclaim themselves the independent state of Jefferson. (Google it.)

Overall, according to the New York Times, 18 percent of Americans' income comes from the federal government. In some areas, including parts of Northern California, it's more than 30 percent, and in parts of some other states - often anti-big-government states - it's more than 40 percent.

The increasing dependency on the government is not sustainable. We all know that. But it's not enough to just get angry and blame government, when many of the programs people fume about today were a result of public demand.

People are turning against Social Security, Medicare, unemployment insurance and other basic support systems that have reduced poverty and provided a safety net - not just for the poor but increasingly for the middle class, whose numbers are dwindling. The proud American claim of opportunity for all is at risk. Yes, our support systems need reform. But the point must be to sustain them, not to destroy them.

The safety net was not woven by left-wing zealots. Richard Nixon and Ronald Reagan proudly enhanced it, to public acclaim. George W. Bush added the Medicare prescription drug benefit. Now somehow all of this is tainted money. And don't even start on veterans' benefits, which are figured into the map below. Can anyone really argue we do too much for these men and women?

Then there's the myth that lowering taxes solves everything. Starve government and, like magic, all will be well. But lowering taxes during the Reagan and George W. Bush years sent deficits soaring. This is the bill that has come due.

Fed by wars and recession in this century, the deficit now is a huge, long-term problem we must control. But most economists reject dramatic cuts to government spending. Rather, we need to spend wisely, helping families get back on their feet and shoring up the basics, from repairing roads to improving education: Invest in what will help us to prosper in the long run.

We need an honest discussion of what government should do in a civilized society. To blame it for everything is to blame ourselves. We must hold

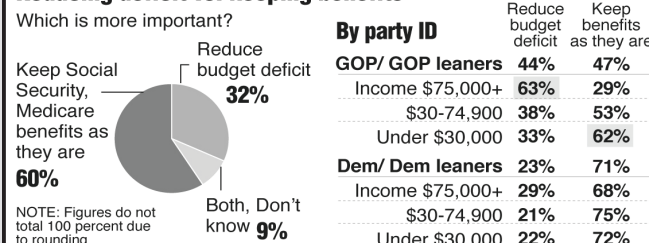
Opinion on entitlements

Though Americans say Social Security, Medicare and Medicaid need an overhaul, they do not support reducing benefits in order to fix the federal budget deficit, state budget shortfalls or financial viability of the programs.

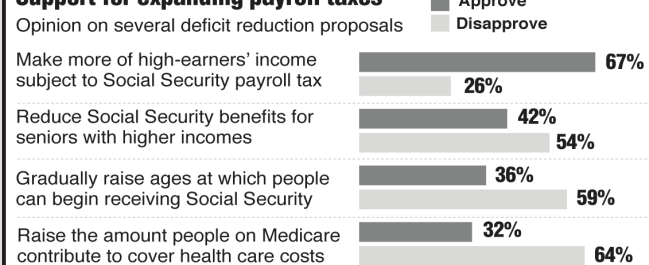
Do entitlements need changes?

| | Completely rebuild | Needs major changes | Works pretty well, minor changes |
|-----------------|--------------------|---------------------|----------------------------------|
| Medicare | 21% | 33% | 38% |
| Medicaid | 17% | 37% | 39% |
| Social Security | 18% | 34% | 41% |

Reducing deficit vs. keeping benefits



Support for expanding payroll taxes



Source: Pew Research Center for the People & the Press poll of 1,502 adults, June 13-19, 2011; margin of error: +/-3.5 percentage points. Graphic: Judy Treible © 2011 MCT

politicians accountable, but we must be accountable, too. Today, America is in denial. You can't collect less money and keep spending more. And you can't cut off 40 percent of a community's income and expect it to suddenly thrive. (c)2012 the San Jose Mercury News (San Jose, Calif.)

Harvard study links good teachers to lasting gain

Jay Gillen
The Baltimore Sun

If we really care about the education of young people in poverty, we will stop focusing on test results and pay much more attention to the quality of life students and families endure. The more their parents and the students themselves are employed, the better their housing and transportation, the better their health care and nutrition, the more they learn.

Propaganda for testing and fear, however, recently got a boost from media coverage of a well-publicized study out of Harvard and Columbia universities. The study centers on "teacher value added" or VA - teachers' rankings by improvements in their students' test scores. The New York Times headlined its report on the study, "Big Study Links Good Teachers to Lasting Gain." But the researchers conclude that for students coming from poverty, the "lasting gains" are very small when present at all, and are only gains relative to other students in poverty, not relative to wealthier students, who remain far ahead by all measures.

For low-income students, the authors write, "Teacher VA does not have a significant effect on college attendance rates at age 25." "Not having a significant effect" is hardly a "lasting gain."

By age 28, the study discovers, low-socioeconomic-status students of elementary and middle school teachers who produced high test scores earned only \$2.70 more each week than comparable students whose teachers produced average test scores. In Baltimore, \$2.70 is not enough for a round-trip bus ride.

Although the data above come directly from the Harvard/Columbia study, you didn't see these findings in press accounts because the purpose of the study is to contribute to the propaganda that distracts public attention from the underlying effects of the caste system on education.

Aggregated data help the authors address their main policy concern: whether it makes sense to pay bonuses to "higher quality" teachers, or to "de-select" (their euphemism for "fire") "lower quality" teachers. They conclude that it makes more sense to fire the lowest 5 percent of teachers because the best teachers are likely to stay teaching even without a bonus. But if the researchers had reported only on students in poverty, they would have had trouble justifying "de-selection" of any teachers at all based on test scores because the effect of "high value-added" teachers as opposed to "low

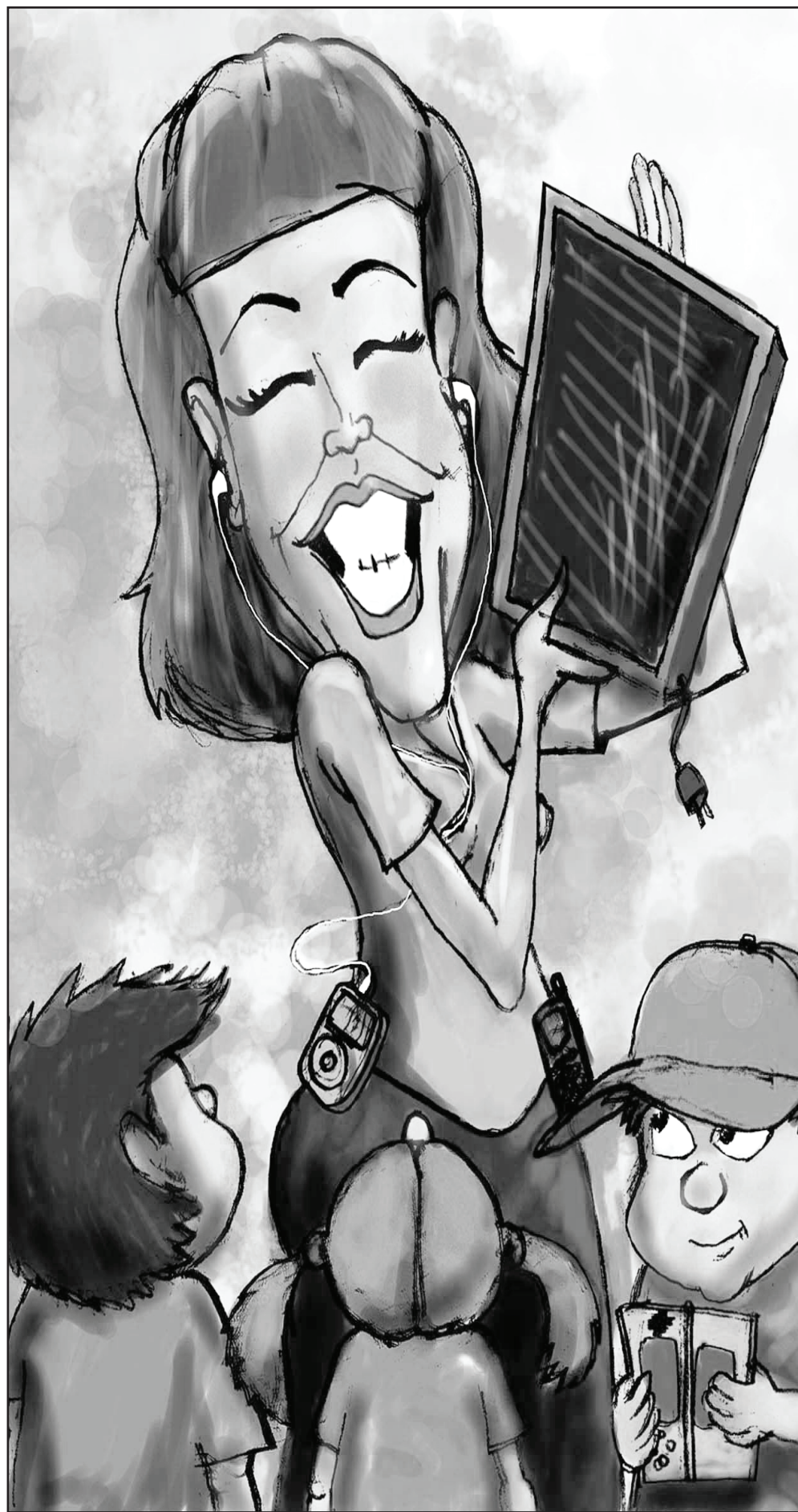


Illustration by Strach/San Jose Mercury News MCT
Study links good teachers to lasting gains by students.

value-added" teachers is either non-existent or very, very small for that population.

It's interesting, too, that the long-term correlations between the "value-added" measure and students' lives are inconclusive or non-existent for the great majority of teachers - the middle 70 percent - so the authors say

nothing about the benefits of replacing, for example, a teacher who ranks in the 30th percentile with one who ranks in the 60th percentile. Their study really only amounts to saying that schools should try to keep the very best teachers and get rid of the very worst - hardly a deep insight. All of this work is premised, of course, on the dubious

idea that test scores are the most important criterion to use in evaluating education.

For comparison, giving employment to teenagers has a much higher lifetime payoff than trying to measure and sort teachers by "value added." Research shows that students who have a part-time job in high school earn \$40 a week more by the time they are 27 than other students. That's enough to make payments on a car, and it is 15 times the effect the university study found from replacing an average teacher with a great teacher.

The positive effect of attending schools that serve generally better-off students is also vastly more important than teacher quality. According to the Harvard research team, students who go to schools where most students are college-bound (i.e., wealthier students) earned \$26,312 a year by age 28, compared to \$15,917 for students who go to schools where most students are not college bound (i.e., poorer students). That works out to \$200 more each week, 75 times greater than the effect the authors found of improving teacher quality. The authors are completely open, too, about the fact that the positive effects on future earnings are much stronger for richer students than for poorer students; in other words, wealthier parents would be wise to pay more for the best teachers because it will help their kids proportionately more than the same good teachers would help poor kids.

Even aggregating the wealthier and less wealthy students together, the authors found less than half a percent increase in the probability of a student's going to college if that student had a "high value added" teacher, compared to a student who had a "low value added" teacher. This makes sense: Wealthier children tend to end up in college and poorer children tend not to, regardless of the teachers they had in school.

This study has received prominent attention in the media and is bound to be quoted widely, since it reinforces the "reformers'" prejudice that making teachers fearful for their jobs is a good idea. But a well-educated public wouldn't buy any of it: "testing" isn't the same as "education"; the caste system isn't the same as "equal opportunity"; and "value added" doesn't make nearly as big an impact on children as supporting, respecting and listening to teachers who care. If you're not sure who those teachers are, just walk into any school and ask.

(c)2012 The Baltimore Sun

Prospectus News

Rm. X-155 2400 W. Bradley Ave.
Champaign, IL 61821

217-351-2216

Find us online:

www.prospectusnews.com
facebook.com/prospectusnews
twitter.com/the_prospectus

Originally created as the Parkland College Prospectus in 1969 in Champaign, IL, Prospectus News is a student produced news source in print, Web, and design media formats. Prospectus News is published weekly during the semester and monthly during the summer.

Editorial Policy and Letter to the Editor

- All content is subject to review by the editorial staff.

- All submissions must follow the Parkland College code of conduct. All violations of said code will be turned over to Parkland College Administration and Public Safety.

- All content, once published, becomes property of Prospectus News.

- All submitted content must be original work.

- All submissions must also include up to date contact information.

- View expressed are not necessarily that of Prospectus News or Parkland College.

- E-mail prospectus@parkland.edu, subject "Letter to the Editor."

Advertising

Interested in placing an ad?

Contact us: 217-351-2206

prospectusads@parkland.edu

- Advertising is accepted which is non-discriminatory and not in violation of any laws. Prospectus News reserves the right to refuse any advertising. Publication of advertising constitutes final acceptance.

- Advertisers must verify ads for accuracy.

- Prospectus News deadline for all advertising is 5 P.M. of the Friday immediately before the upcoming edition.

- The advertiser pays for all advertising and views expressed in ads are not necessarily that of Prospectus News or Parkland College.

Prospectus News Staff:

Publications Manager:
Sean Hermann

Advisor:
John Eby

Staff Writers:
Spencer Brown, Buster Bytes,
Mark Roughton

Production Supervisor:
Briana Stodden

Photography Editor:
Alisha Kirkley

Photographers:
Nick Washington,
Chanelle Stokes

Graphic Designer:
Burke Stanion

Assistant Editor:
Shane Rogers

Ad Manager:
Linda Tichenor

Did you know?

All unused issues of Prospectus News are donated to the Parkland College Veterinary Technology program or the Champaign County Humane Society.



Please Recycle

When students fall asleep in class: Is it disrupting or motivating your learning?



Do you have an opinion?
Let us know at:
www.facebook.com/prospectusnews

Photos by Chanelle Stokes/Prospectus News



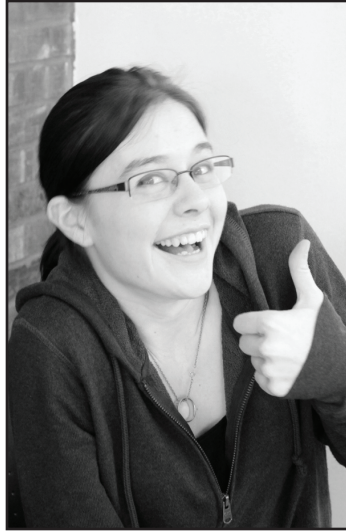
Tabitha Hess

Age: 20
"As long as they're in the back of the room and not snoring, I don't care."



Kardia Gray

Age: 18
"Students just lose all focus on the teacher and what they're saying."



Sam Lehman

Age: 18
"I personally think it's rude and disruptive. The teachers work hard to educate people and when someone falls asleep, it shows that they don't care. It's very disrespectful."



Jeff Kilar - Hospitality Director

Age: 46
"They should get more sleep on school nights and be rested for class. It's not particularly disruptive."



Gabriel Chaille

Age: 18
"Other students falling asleep in class encourages me to do the same - especially if I'm tired and comfortable."



Jalessa Jones

Age: 20
"Students who fall asleep in class clearly do not have time to be in the class or they don't want to be there. I think that it motivates me to stay focused and awake in order to get all the information I need to pass."

DRESS

continued from page 3

probation and you come in my courtroom like that? I don't need to see your underwear."

Etiquette and public speaking coach Holly Rauser of Morgan Hill (www.ConsiderEtiquette.com) says inappropriate dressing is a sign of a breakdown in respect, for oneself and others.

"The 'Me' Generation has become the Age of Rudeness," she said. "We have overdone the self-esteem movement and forgotten to teach that other people have worth, too. We need to treat others with the respect that we ourselves demand."

In some cases, people feel embarrassed for looking good. Sue Fox, an etiquette expert in Pleasanton, Calif., (www.EtiquetteSurvival.com) and author of "Etiquette for Dummies," recently had a woman shop clerk actually apologize for being too dressed up because she'd just come from a funeral. "When did dressing nicely become something you have to apologize for?" Fox asked.

Indeed, the rules governing fashion decorum have become increasingly less stringent

over the decades, particularly in the Bay Area and most notably in menswear, said style maven Dyanna Dawson, who blogs about San Francisco and New York street fashion (www.TheSFStyle.com). "A lot of men will wear jeans and casual shoes to their 9-to-5," and that's great, she said. But some of her male friends here say they feel "odd-man out" if they ever dare wear a suit to work.

The casual look "has allowed for more freedom of self expression in the ways people choose to dress," Dawson said. "But the flip side is people who feel like they'd be ostracized in some way for dressing too well."

Fox says research shows people behave better when they're dressed up. "And it doesn't have to be expensive clothes," she said. "Just a clean ironed shirt for a dinner party or a job interview, tucked into nice slacks. How you dress, groom yourself and handle yourself in public are all part of your 'packaging.' Yes, you should wear what you like, but just because you love wearing shorts and sports sandals doesn't mean that you should wear them to the opera in the city."

While it's been trendy the

past few years for high school kids to wear pajama pants to class, some schools around the country have banned the trend. And in Shreveport, La., Commissioner Michael Williams received national attention in January for proposing an ordinance outlawing the wearing of pajamas in public, for students or adults.

"The moral fiber in America is dwindling away," Williams was quoted as saying in the Wall Street Journal. "It's pajamas today; what is it going to be tomorrow? Walking around in your underwear?"

Perhaps all is not lost. Even some high-school kids shun the "too cool to care" look amid the PJ trend. "It can be a signal of carelessness ... and it doesn't put me in the right educational or social mindset," said Shalaka Gole, 16, a student at California High School in San Ramon, Calif. "I normally don't pass judgment on others who wear pajamas to school - to each their own, right? But however much my friends try to get me to wear sweats in public, to 'put down my attire guard' for one day, I never will."

©2012 The Oakland Tribune (Oakland, Calif.)

Get the latest updates from
Prospectus News



facebook.com/ProspectusNews

Have an opinion? Speak up, be heard, make a difference.

www.prospectusnews.com - prospectus.editor@gmail.com - (277) 351-2216



Who said print is going downhill?



Prospectus News

Serving nearly 1,000 readers, weekly.

music downloads

Week ending Feb. 28, 2012

Top tracks

() Last week's ranking in top five

#1 Album



21
Adele

United States

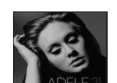
| | | |
|-------------------------------------|-----|---|
| <i>We Are Young</i> • Fun. | (4) | 1 |
| <i>Stronger</i> • Kelly Clarkson | (5) | 2 |
| <i>Glad You Came</i> • The Wanted | | 3 |
| <i>Good Girl</i> • Carrie Underwood | | 4 |
| <i>Set Fire to the Rain</i> • Adele | (2) | 5 |



Our Version of Events
Emeli Sande

United Kingdom

| | | |
|---|-----|---|
| <i>Somebody That I Used to Know</i> • Gotye | (1) | 1 |
| <i>Next to Me</i> • Emeli Sande | (2) | 2 |
| <i>Wild Ones</i> • Flo Rida | (4) | 3 |
| <i>Hot Right Now</i> • DJ Fresh | (3) | 4 |
| <i>Titanium</i> • David Guetta, Sia | (5) | 5 |



21
Adele

Spain

| | | |
|--|-----|---|
| <i>Ai Se Eu Te Pego</i> • Michel Telo | (1) | 1 |
| <i>Someone Like You</i> • Adele | (2) | 2 |
| <i>Rolling in the Deep</i> • Adele | (3) | 3 |
| <i>Yo Te Esperare</i> • Cali & El Dandee | | 4 |
| <i>Sexy and I Know It</i> • LMFAO | (5) | 5 |

Source: iTunes

© 2012 MCT

YOUR AD HERE

Promote HERE with the Prospectus.

for information and rates contact
Linda Tichenor - prospectusads@parkland.edu

Sponsored by:

Fact or Fiction?



westgateapts.com

TRUE - Lightning can be six times
hotter than the surface of the sun.

Get it right?

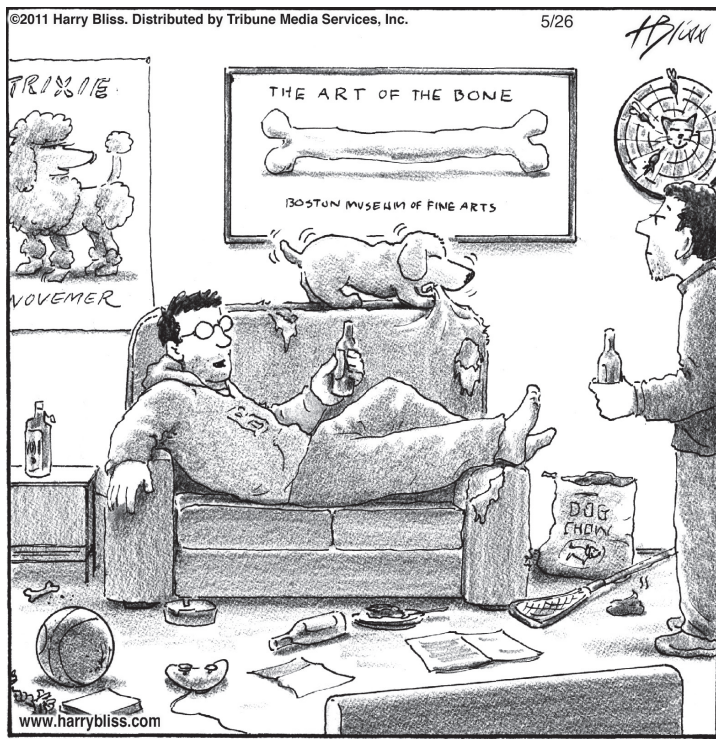
Show current ID and receive \$10 off application fee @ Westgate Apartments

1600 W. Bradley Ave. Champaign, IL

Open M-F 9am - 5:30pm, Sat. 10am - 4pm

Puzzles & Comics

Bliss



"It's a 'man cave' and a 'man's-best-friend cave.'"

Classifieds

Your ad here

Place your classified here for only \$5 per week. Ads must be less than three lines or 30 words. Contact our ad department today! 217-351-2206 or prospectusads@parkland.edu

Furnished 1/BD/1BA, \$375. All utilities included. Available now and August 2012. Call 217-328-5122. www.greenstreetrealty.com

"I don't ever want to be a sentimentalist. I prefer to be a realist. I'm not a romantic really."
- James Earl Jones

Sudoku (intermediate)

| | | | | | | | | |
|---|---|---|---|--|---|---|---|---|
| | 4 | 8 | | | | | | |
| | 6 | | 5 | | 8 | | | |
| | | | | | 6 | 8 | | 5 |
| 2 | 3 | | 1 | | | | | |
| | 1 | | | | | | 6 | |
| | | | 7 | | 2 | | | 8 |
| 9 | 7 | 3 | | | | | | |
| | | | 9 | | 5 | | 2 | |
| | | | | | | 1 | 3 | |

© 2011 KrazyDad.com

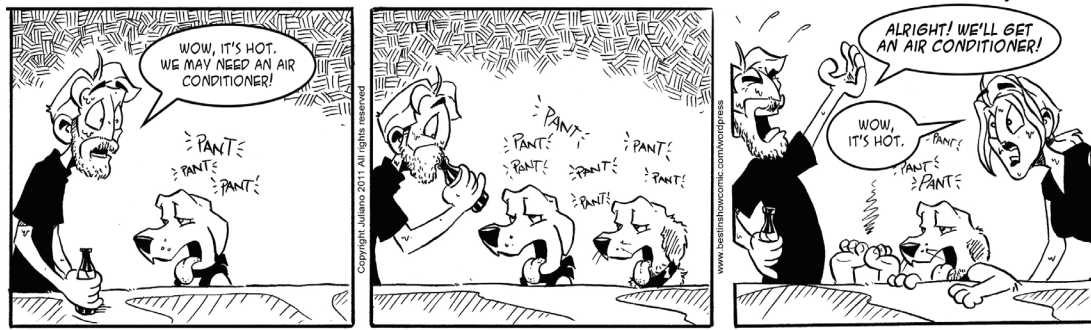
BREWSTER ROCKIT



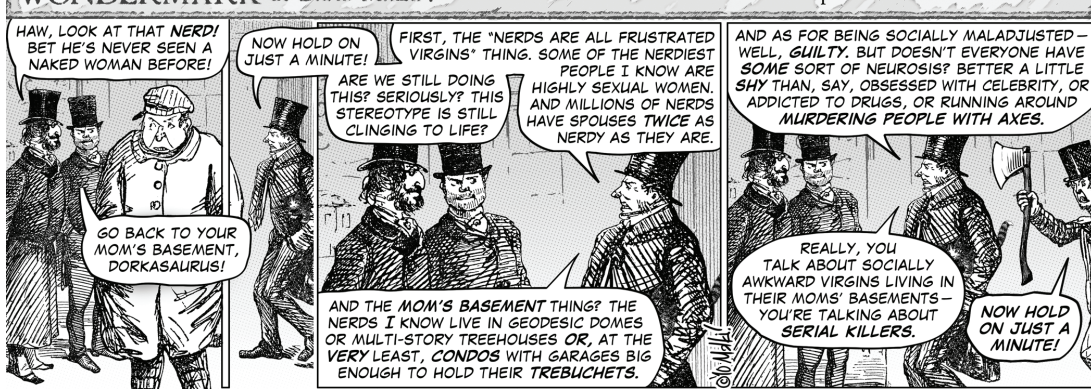
Calamities of Nature by Tony Piro



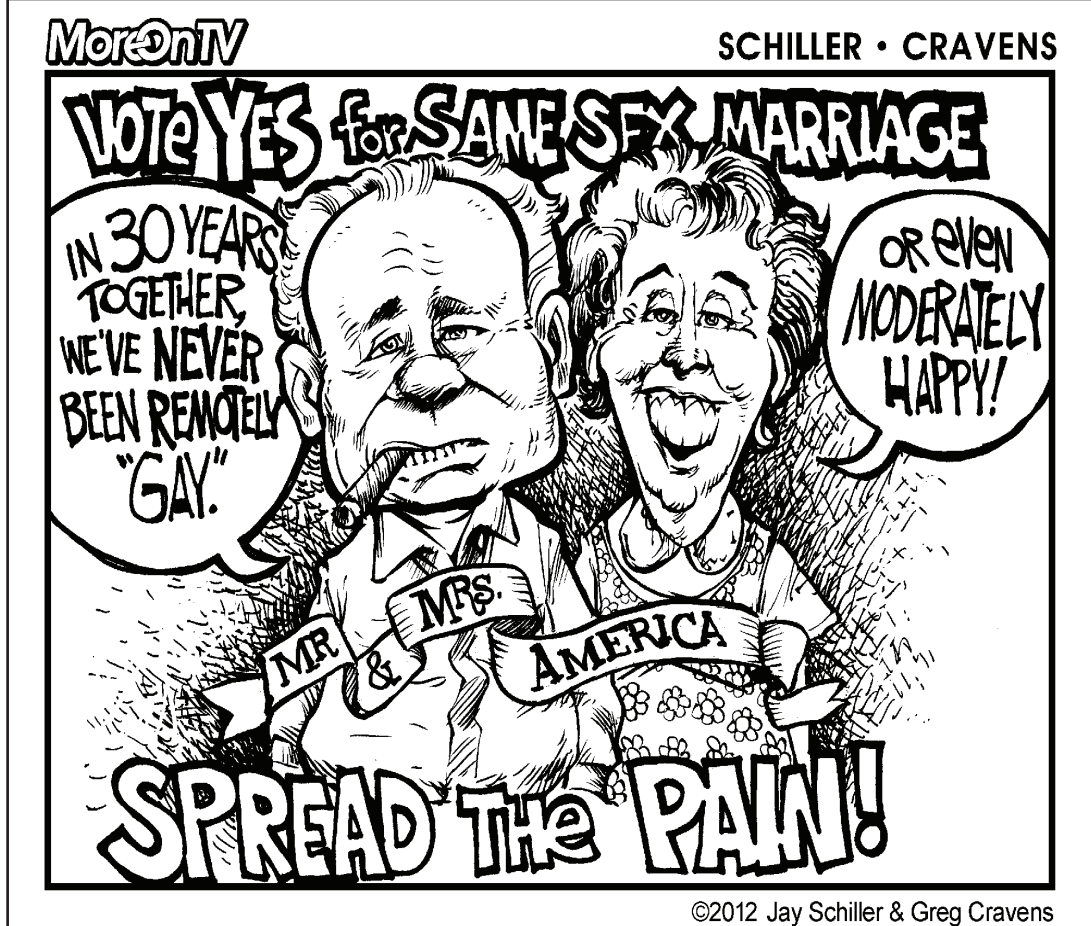
Best In Show



WONDERMARK BY DAVID MALKI!



xkcd.com



©2012 Jay Schiller & Greg Cravens

The TV Crossword

By Jacqueline E. Mathews

| | | | | | | | | | | |
|----|----|----|----|----|----|----|----|----|----|----|
| 1 | 2 | 3 | 4 | | 5 | 6 | 7 | | | |
| | 8 | | | | 9 | | | 10 | 11 | |
| 12 | | | | | 13 | | | | | |
| 14 | | | | 15 | | | | 16 | 17 | |
| 18 | | | | 19 | | | | 20 | | |
| | | 21 | 22 | | | 23 | | | | |
| | | 24 | | | | 25 | | | | |
| 26 | 27 | | | | | 28 | | | | |
| 29 | | | | 30 | 31 | | | 32 | 33 | 34 |
| 35 | | | | 36 | | | | 37 | | |
| | 38 | | 39 | | | | 40 | | | |
| 41 | | | | | | | 42 | | | |
| | | | | | | | 43 | | | |
| | | | | | | | 44 | | | |

9/11/11

ACROSS

- "Family ___"
- "Two ___ a Half Men"
- Actress Samms
- "Beauty and the ___"
- Jennifer Garner sci-fi series
- Off-the-wall
- Chat room laughs
- Naomi or Wynonna
- Make a selection
- "___ Given Sunday"; Al Pacino film
- Seymour or Pauley
- "___ Little Rich Girl"; movie for Shirley Temple
- Work the fields
- Actress Spacek
- Paul and Howard
- Jellystone Park bear
- Actor Michael of "Family Ties"
- At ___; relaxed
- "The Amazing ___"
- "Quantum ___"; Scott Bakula series
- Panabaker of "No Ordinary Family"

- ___ to be tied; furious
- "...and a partridge in a ___ tree."
- Stubborn as a ___
- "I've Got a ___"
- Reiner and others
- Mistake
- One opposed
- Three-foot measures: abbr.
- Take a nap

DOWN

- Criminal
- Actress on "CSI: Miami"
- Actress Thurman's namesakes
- Public prosecutors, for short
- Alphabet's opening
- Urkel, for one
- Daniel ___ Kim
- Actress on "Mike & Molly"
- Boo-boos in print
- Montgomery's state: abbr.
- "3rd Rock from the ___"
- Blockbuster film for Roy Scheider and Richard Dreyfuss
- Attempt
- Cryer and Gosselin
- Porky of cartoons & Babe of film
- "Win, ___ or Draw"
- "Days of Our Lives," for one
- "The 40 ___ Old Virgin"; Steve Carell movie
- President Ford's monogram
- Employee's delight
- Lascivious glances
- "___ Pray Love"; Julia Roberts film
- "Kate & ___"
- "Say ___ to the Dress"
- Nudge; incite to action
- ' War; champion
- Thoroughbred racehorse
- "___, the Beloved Country"; movie for James Earl Jones
- Scoundrel

Solution to Last Week's Puzzle

| | | | | | | | | | |
|---|---|---|---|---|---|---|---|---|---|
| S | H | O | W | | S | A | M | | |
| P | O | O | H | | T | R | A | M | P |
| H | A | R | P | | V | I | C | T | O |
| E | R | A | S | | B | A | N | S | D |
| E | S | T | | B | I | N | G | | F |
| | | | | I | D | O | L | | H |
| | | | | O | R | A | L | | S |
| R | A | C | E | R | | H | A | L | F |
| C | L | A | W | | A | N | O | D | A |
| A | L | I | | A | N | T | E | | A |
| | | E | N | O | U | G | H | | W |
| | | Y | E | N | T | L | | F | E |
| | | | | T | O | E | | M | A |

© 2011 Tribune Media Services, Inc. All Rights Reserved.

9/11/11

Sports

Cobras baseball ready for 2012 season

Mark Roughton
Sports Writer

The 2011 Cobras ended the season on a sour note, losing to Region 24 champ Heartland 12-4 and cutting their season short before reaching Nationals. Despite the disappointing end, the Cobras put together an outstanding 43-11 record and will look to build off that during the upcoming season.

They will begin 2012 ranked No. 8 in the polls and the expectations couldn't be any higher for this group.

"I expect us to win the national championship," sophomore shortstop Wes Minton said. "It's what we've worked hard for the last couple months."

Head Coach Matt Kennedy agrees, but also has other expectations for this group.

"We expect them to play harder than everybody we play," Kennedy said. "If you don't play harder than your opponent - win or lose, then you fail today."

As for overall accomplishment, the fourth year head coach has the same goal as his players. "Our expectation is to win a national title, and that's every year," he said.

A majority of starters will be returning from last year. These players all have a season under their belt and are primed and ready to compete with the best in the country. All-American Wes Minton returns at shortstop in addition to Landon Weitekamp at third base, Joey Migliaccio and Joel Stucker at second base.

First basemen Jeff Limbaugh is also back for his second season. Bobby Burns, Alec Ornelas and Nolan Wilson will battle for time behind the plate. There is great depth in the infield as freshmen Ryan Oltorik, Brennan Kwiatkowski,



During the off-season, Cobra baseball players practice regularly at the Soccer Planet in Urbana.

Photo by Nick Washington/Prospectus News

and Adam Casson can play first base. Freshman Alex Smith is available at second base or behind the plate, while LSU transfer Kevin Koziol is can cover at third or first.

The outfield is also loaded with talent. Sophomore Jake Pewitt returns from a solid freshman season. Kieston Greene, a Lake Land CC transfer looks to have a major impact in centerfield. Freshman Jack Wietlispack and sophomore Joe Trennepohl will battle for playing time in right field. Also available in the outfield are Isaac Miller, Tom Hooker and Brad Wheeler - all very good players that will get some innings this year.

The strength of this Cobras team however, will lie in

its deep pitching staff and talented rotation of starters. Lefties Bo Weir, Zach Hall and Clay Manering are expected to get the most starts and set the tone for the staff.

"Those guys should carry the staff," Kennedy said. "We expect a lot from those three guys."

Sophomore Bo Weir understands these expectations. "I expect our pitchers to be as strong as we think," Weir said. "The rotation is definitely very strong, and we're going to come out looking to win every game."

The fourth and fifth starter spots are still up for grabs between sophomores Brian Krolikowski and Josh Witt. Freshman Brett Haan is also

expected to receive some starts this year.

The starters are just the tip of the iceberg for this talented pitching staff.

The Cobras bullpen boasts some big arms this year and will be a force. Nebraska transfer Will Polley will get some innings, as will returning sophomores Mark Hode, Jake Rone and Brad Reedy.

There are plenty of great freshmen arms as well. Sam Thoele, Dylan Reid, Logan Shaftner, Jason Ziegler and likely-closer James Naile headline an outstanding back end of the pen.

"The bullpen is going to be the strength of this year's team," Kennedy said. "I think just the pitching staff in

general is going to have to help carry us."

Yes, the 2012 Cobras have a lot of talent and depth, but they will only go as far as effort and desire take them. With that in mind, they've been using last year's disappointment as powerful motivation for the upcoming season.

"It's making us work a little bit harder, we know what we have to do," sophomore Wes Minton said. "As sophomores now, we're just pushing the freshman to get work done so it won't happen again."

First basemen Jeff Limbaugh added that, "We know what it feels like to lose, it's not fun."

Despite adding 19 new faces to the program since the end of

last spring, Limbaugh believes that, "Our chemistry this year is a lot better than last year. They're a lot of fun to play with, a lot of fun to practice with."

The road to the World Series will be a difficult one for Parkland. They open up March 2 in Millington, Tenn., at the USA Kickoff Classic where they will play a ranked Iowa Central foe. They will then face two other ranked opponents during that first weekend tournament - Southeastern Iowa and Lackawanna.

They will also face off with Division 1 power Jefferson College the next two weekends. They will then see two very good opponents, facing Iowa Central again and Lakeland on their five-game trip down to Myrtle Beach for spring break. During conference play, they'll deal with perennial powers and region 24 rivals Heartland and Lincoln Land four times apiece.

Kennedy explained his goal in making such a tough schedule by saying, "I think hopefully by the end of the year, it will have prepared us for postseason play. When we did get challenged last year, it was at the very end of the year and we didn't know how to win the close game. I anticipate that with this schedule there's going to be a lot of close games."

The challenging stretches of the schedule are sure to test the strength and character of this Cobras team. The Cobras' home debut is March 25, with a doubleheader against Illinois Central College at 1:00 p.m. Come out and support your 2012 Parkland Cobras baseball team as they aim for a World Series appearance and national championship.

Cobras softball preview

Spencer Brown and Mark Roughton
Sports Writers

As basketball season nears the postseason, excitement is building in anticipation of the upcoming softball season. Head coach Chuck Clutts has a very talented group to work with this year.

Coming off a strong 2011 season and a very productive fall schedule, the Lady Cobras are ready to take that next step. They will have some expectations to live up to after garnering a preseason national ranking.

Clutts is entering his 12th season as the head coach of the Parkland Cobras softball team. He will do so with a team ranked No.17 nationally in the preseason.

"It's on how they did last year," Clutts said, referring to the ranking. "But, it's nice to be recognized." It is a testament to the fact that his club finished 2011 with a record of 38-20.

Despite this, Clutts knows that sports are focused more on the here and now. Last year's team was great, but the spotlight now shifts to 2012. This year's team is loaded with experience.

Brittany Einck and Kaitlyn Winkler lead a team full of sophomores and talented freshman. They have bought in to Clutts' system as part of the reason the chemistry on this team has so greatly improved.

When the head coach was interviewed in the fall, he identified an area for improvement.

"Communication on the field has to be better and understanding the game of college softball," he explained. After the fall season concluded and personal evaluations and workouts took place, the coaching staff's tune has changed quite a bit for the

better.

"They are very supportive with each other on and off the field. I think the chemistry is fantastic," Clutts said. This offseason improvement has prompted the team nickname the "Parkland Softball Family."

Hopefully this family can build off the momentum of the fall schedule, preseason hype, and the cohesiveness they share as a unit. In the fall, the Cobras were able to compete in 21 contests that did not affect any record or standing. It allowed for the development of their freshman and gave them a unique advantage by playing college level softball without fear of hurting their team.

The learning curve is shortened without the fear of making mistakes. This allows them to gain a better understanding of the game and how it is played at the college level. It is also a great tool for returning sophomores. It allows them to improve on areas of their game that may need it or even add new skills to their repertoire.

The bar has been set high for this team, not only by the pollsters and fans but also by the players themselves. When asked about his aspirations for this team, Clutts stated his goal by responding without hesitation, "Go to nationals. That's their expectation, that's why they came to Parkland College."

Coming to Parkland College with aspirations of a national championship entails something else, too - a very tough road to the national bracket.

Clutts has a philosophy behind his scheduling tactics. "It prepares us well," he said. "Our region is very tough."

A member of that very tough region, and currently ranked No. 2 team, is Lincoln

College. The Cobras are slated for two meetings with their conference rival on March 22 and April 12. These games are just one part of the stiff competition that awaits the Cobras, but Clutts feels it is much needed, stating that, "The tougher the competition, the better you will play in the end."

One puzzle yet to be solved is the pitching rotation. Clutts has five pitchers on staff. Chances are that Amy Simpson will be the No. 1 starter for this team. She pitched the most innings during the fall schedule, at 32.1, and posted an impressive ERA of 2.16. The battle for second starter seems to be between Shelby Lust and Taylor Hull. Lust, a sophomore, has the advantages of playing a year under Clutts and posting a record of 4-1 in the fall. Hull, as a freshman, was equally impressive in the fall. She posted an ERA of 3.00 while allowing the least number of hits among the pitching staff at 29. Either way, Clutts is left with a dilemma most coaches would love to have.

The regular season begins in a few weeks and the players have developed a motto that will shape the 2012 campaign. "The goal is to clearly define what is left is the mission." Everything is a stepping stone for the next accomplishment.

The players used the fall season to prepare for the offseason. The offseason was used to prepare for the regular season. The home game on March 7 against Shawnee College is the beginning of the season, which will be used to prepare for the postseason and the climb to a national championship. It will be exciting to watch the season unfold. Be sure to support Parkland athletics.

Live game broadcasts, Cobra news and more!



www.CobraSports.Net



I WANT YOU
Prospectus News
is seeking staff writers
Contact: prospectus.editor@gmail.com
X-155 217-351-2216



Entertainment



Photo by Lionel Hahn/Abaca Press/MCT

Angelina Jolie at the Oscars: The leg that roared

John Timpane
The Philadelphia Inquirer

There's going out on a limb, and there's your limb going out. Or you putting out your limb. Angelina Jolie did, and now it's leg-endary. Jolie put out her right leg repeatedly before and during Sunday's Academy Award presentations, and it instantly became an object for satire and sharing. Funny guy Jim Rash, one of the recipients of the best adapted screenplay Oscar, struck a Joliesque pose onstage in his tux. Now, it has become an Internet meme — with a Twitter account: @AngiesRightLeg. As of 5 p.m. EST Monday, the account had drawn more than 19,000 followers. One tweet: "Left leg and I talked — everything's cool. Next Oscars, she gets the slit." One writer,

Rob Kutner, tweeted: "BREAKING: Fake Twitter account @AngiesRightLeg given \$9 kajillion book advance, CBS series that's already been pre-canceled." Twitter reported a spike during Jolie's legfest of about 3,400 tweets per second, but that was dwarfed by Cirque du Soleil, whose aerial ballet drew traffic in excess of 18,000 per second. By Monday, a new word had been created: legbombing. Al Roker and Ann Curry did a gam-off on "Today," for goodness' sake. Visually, the leg has run away with itself. The creative aggregators at BuzzFeed ran the top 10 photographs of the actress' dextral limb. The Tumblr account oldghost ran a brilliant doctored image (<http://bit.ly/xxfsiQ>) in which both Jolie pins were extended, revealing an unsuspected cowboy saun-

ter. BuzzFeed ran it, too, getting more than 50,000 hits. Throughout the Web, photo manipulators were showing Jolie's leg setting foot on the moon, stepping into Leonardo da Vinci's Last Supper, crossing the Delaware with Washington, and extending from the Statue of Liberty, among many, many other recontextualizations (an E! Online gallery is here: <http://eonline.com/zXwCnT>). Jolie's leg was not the only celebrity body part to be so celebrated. Jennifer Lopez appeared to show unexpected extents of areolar frontier, and now an account is titled @JLosNipple. And Bradley Cooper's novel lip hair has two accounts: @CoopersMustache and @BradleysStache.

(c)2012 The Philadelphia Inquirer

Weinstein's winners

A look at the Weinstein Co.'s Oscar-winning films and how much they made at the box office:

| Movie | Oscar wins | Domestic box office |
|----------------------------|------------|---------------------|
| The English Patient (1996) | 9 | \$79 million |
| Shakespeare in Love (1998) | 7 | 100 |
| Chicago (2002) | 6 | 171 |
| The King's Speech (2010) | 4 | 136 |
| The Artist (2011)* | 5 | 32 |

*Still playing at theaters
Source: Box Office Mojo

Graphic: Khang Nguyen, Los Angeles Times

© 2012 MCT

wpcd fm
88.7 PARKLAND COLLEGE



88.7 WPCD Song of the week

Band: The Melismatics
Song: "Face to Face"
Album: Mania!

Request this song on 88.7 WPCD
217.373.3790 or @887WPCD
facebook.com/887WPCDFM

Prospectus needs Photographers

- Experience not required
- Scholarships available
- Looks great on a resume
- Some equipment & training provided
- Get exclusive access to special events



For more information: prospectus.editor@gmail.com or stop by X-155

Value. Location. Quality.

www.champaign-apartments.net

WP WELLINGTON PLACE

- Fitness Facility
 - Washer/Dryer in unit
 - Pet Friendly
 - Free Internet
 - 24hr Maintenance
 - Minutes from Parkland
- One Bedroom Units from \$605
Two Bedroom Units from \$765
Town Homes (2-3 Bedrooms) \$1050

TWIN OAKS One Bedroom Apartments

- Pet Friendly
 - Free Internet
 - Free Parking
 - Friend Referral Program
 - Across from Parkland Entrance
- 1st Floor \$495
2nd Floor \$550
Enjoy a private one bedroom apartment!

Contact: 217.403.1722 Maria@champaign-apartments.net



HAVE YOU EVER THOUGHT ABOUT
RUNNING FOR
STUDENT GOVERNMENT
AT PARKLAND COLLEGE?

NOW IS YOUR CHANCE!
PACKETS THAT INCLUDE THE INFORMATION YOU NEED TO RUN
FOR A STUDENT GOVERNMENT OFFICE ARE AVAILABLE AT
STUDENT LIFE X-153

President Vice-President Student Trustee
Treasurer Secretary Senator

Application, petition, and essay due in
the Office of Student Life
by March 8, 2012 at 5:00 p.m.