



# Experimental procedure for studying the degradation and alteration of limestone slabs applied on exterior cladding

V. Pires<sup>1</sup> · P. M. Amaral<sup>2</sup> · J. A. R. Simão<sup>3</sup> · C. Galhano<sup>3</sup>

Received: 15 April 2021 / Accepted: 3 January 2022 / Published online: 20 January 2022  
© The Author(s), under exclusive licence to Springer-Verlag GmbH Germany, part of Springer Nature 2022

## Abstract

The studied limestone is a well known Portuguese natural stone that occurs in Valverde—Alcanede region, located in the Maciço Calcário Estremenho (center of Portugal). This stone is used in several exterior and interior applications such as paving, cladding, masonry and decorations. Slabs made of the studied limestone were installed in ventilated facade with a “kerf” anchoring system in a building located in Valencia (Spain). After approximately five years, signs of degradation were detected on the facades through changes in color, enhancement of cracks and fissures that caused instability and collapse on several slabs. Limestone slabs comprise irregular patterns due to rock cutting across stylolites. These features represent ideal paths for fluid circulation through the slab and can be identified as vulnerability zones for exterior applications. Experimental procedure included several laboratory analyses to study clays and the iron oxide contents. Microscopic petrography, XRD and SEM observations were important to identify the interaction of the clay material in stylolites and fossil contours. Results show the importance of establishing standard methods for selecting stone on cladding applications. From the results, it is possible to understand that clay minerals have a strong influence on the mechanical performance of this stone. Among other important remarks, results show the importance of the development of standard procedures that acknowledge the structure and mineral composition before setting these natural products as construction materials. Proper stone selection was found important to avoid facade degradation, and hence contribute to prevent accidents and promote user safety as well as economic impacts.

**Keywords** Building facade cladding · Natural stone · Degradation · Mineralogical composition · Aging

## Introduction

The natural stone market is increasingly demanding regarding the performance of natural stone materials when applied in exterior and interior conditions. Applications, sometimes unsuccessful, can be related to a series of structural, environmental, architectural, installation and performance aspects and, not least important, with the knowledge of singularities concerning mineralogical and petrographic analysis (Baud et al. 2014, 2016; Dias et al. 2020; El-Gohary 2007; Espinosa-Marzal and Scherer 2010; Gutiérrez et al. 2012; Huang

et al. 2020; Ivorra et al. 2013; Pereira et al. 2018; Pires et al. 2009; Rothert et al. 2007; Sebastián et al. 2008; Siegesmund et al. 2010; Silva and Simão 2009; Veniale et al. 2001).

This case study refers to an experimental procedure to study the degradation of Portuguese limestone slabs with dimensions of 500 × 375 × 30 (mm) in a building facade in the city of Valencia (Spain) using a standard “Kerf” anchoring system. After approximately 4–5 years of installation signs of deterioration began to be detected in the external facade of the building that led to: (1) changes in color—detected through a change from the original color to a lighter hue; (2) enhancement of cracks and fissures parallel to the surface—developed along stratification plans and stylolites of the slabs; (3) expansion and loss of powdery material mainly on stylolites and at the slab edges. These phenomena have caused instability of the facade elements with consequent implications in users’ safety and aesthetics appearance of the building (Fig. 1).

The studied limestone is a natural stone from Portugal that for the purpose of this work was denominated as AV

---

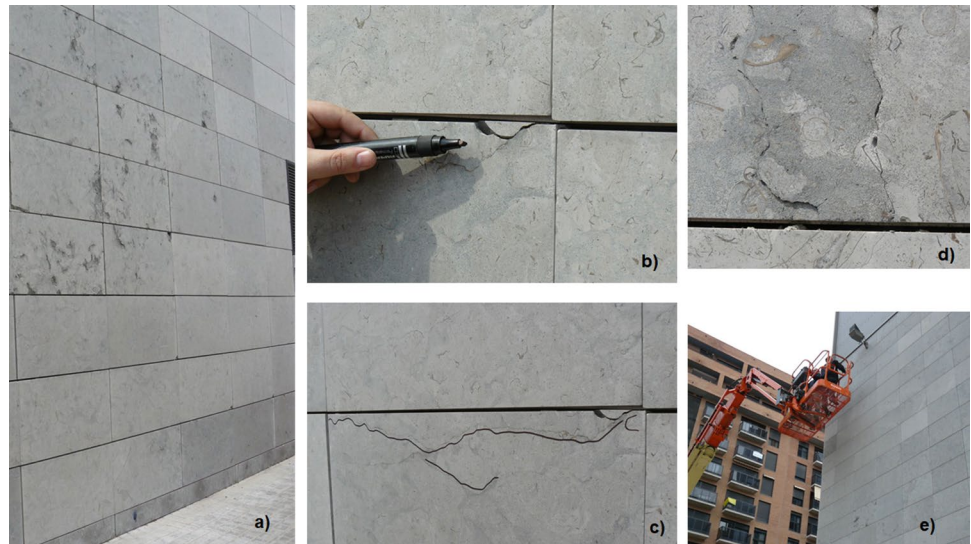
This article is part of a Topical Collection in Environmental Earth Sciences on “Building Stones and Geomaterials through History and Environments—from Quarry to Heritage. Insights of the Conditioning Factors”, guest edited by Siegfried Siegesmund, Luís Manuel Oliveira Sousa, and Rubén Alfonso López-Doncel.

---

✉ V. Pires  
vlcp@uevora.pt

Extended author information available on the last page of the article

**Fig. 1** Exterior views of the building façade: **a** Overview of AV limestone slabs at the façade showing slabs with different color; **b** Example of a crack with limestone fragment detachment; **c** Example of a fissure; **d** Example of cracks, fissures and swelling parallel to the surface—developed along stratification plans and stylolites of the slabs; **e** AV limestone façade inspection. Picture credits by Juan José Tejado Ramos



limestone. This stone has wide application in exterior and interior environments both in Portugal and abroad however, the main technical guidelines recommend that it should be preferably used in interior conditions (Casal Moura 2009). The reason for this concerns the fact that AV limestone may contain heterogeneous structural features such as bedding planes, stylolites, fractures, and outlines of fossils that allow the movement of water and salts on exterior applications (Aly et al. 2018; Casal Moura 2009; Gutiérrez et al. 2012; Pires et al. 2009; Sebastián et al. 2008; Veniale et al. 2001). As studied by Aly et al. (2018), the presence of stylolites and their filling materials can play a relevant part on the decay of the physical and mechanical properties of limestones.

AV limestone mineralogical composition variation and the content of clay fraction and iron oxides are another potential cause for AV slabs degradation. This causes has been previously pointed in several limestone degradation studies since the aggregation/disaggregation or swelling/shrinking of the clay particles occurs when these particles interact with water causing a whole series of identifiable pathologies in building stones (Ercoli et al. 2004; Gutiérrez et al. 2012; Sebastián et al. 2008; Veniale et al. 2001). The presence of clay minerals is not usually verified when selecting a stone for cladding and this may have a negative influence on the faced since clays are minerals with expandable behavior in wet and humid environments (Ercoli et al. 2004; Gutiérrez et al. 2012; Sebastián et al. 2008; Veniale et al. 2001).

Under the light of these considerations this research conducted a laboratory analysis of AV limestone to understand the degradation phenomena and to contribute to a potential standard testing methodology on limestone clay content evaluation. Sound and altered samples of AV limestone were subjected to laboratory tests for determination of Schmidt hardness, water absorption at atmospheric pressure,

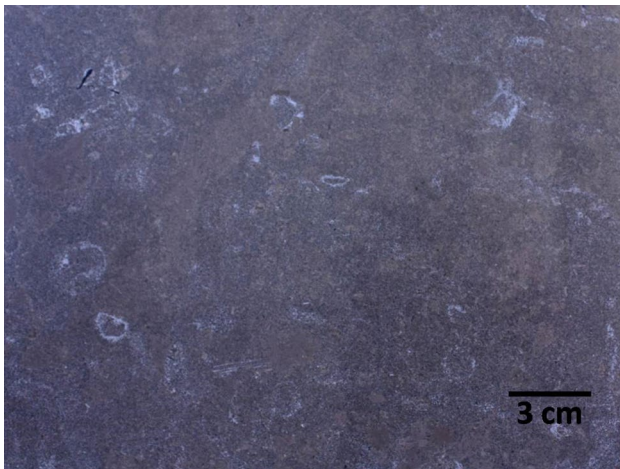
stereoscopic microscopy, X-ray diffraction and scanning electron microscope. These last two assessments have been used to determine the mineralogical content and, when possible, the identification of the clay fraction.

Understanding the variability of stone characteristics increases reliability and allows lower safety factors with a direct impact on the cladding project costs. As far as the authors know, literature is scarce regarding the identification of a standard testing methodology on the impact of clay presence on the mechanical and physical properties of the selected limestone from Portugal, therefore it is clear that in this topic more research is required to gain a deeper understanding of AV limestone cladding performance. Experimental results showed that the use of additional laboratory techniques during the stone selection stage, is of critical importance particularly in stones that present microstructural and mineralogical composition variations after installed in a façade since they may substantially influence the stone performance and service life.

## Brief geological and geographical setting

AV limestone is explored in the region of Valverde and outcrops around Pé da Pedreira (Alcanede, Santarém District, Centre Portugal, GPS coordinates: 39.464002213165465, -8.850750411540488). It belongs to the Maciço Calcário Estremenho and to the Montejunto Formation (Upper Jurassic) (Zbyszewski et al. 1971).

The exploited limestone beds are developed approximately EW for about 1000 m long and 150 m wide and are south limited by a dolerite dike (Ramos and Guimarães 2005; Zbyszewski et al. 1971). The Montejunto Formation comprises thick-bedded, white to gray micritic limestone which alternate with bluish-gray limestones, and gray hard



**Fig. 2** Macroscopic aspect of a sound sample of AV limestone

shales, with thicker shales near the top (Turner et al 2017). The region is covered by 1:50,000 Portuguese Geological Map (27-C, Torres Novas) (Ramos and Guimarães. 2005). The quarries have a maximum front exploration of 10 m producing large dimension blocs cut parallel to the layering (Zbyszewski et al. 1971).

## Petrographic characterization

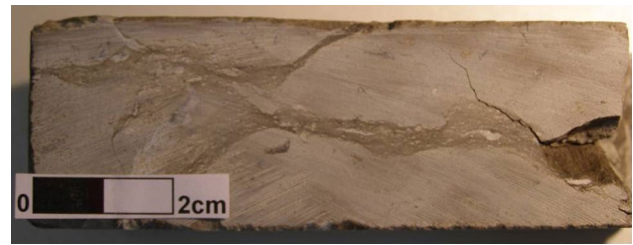
### Macroscopic description

AV limestone is a fine grained calciclastic and bioclastic grayish brownish limestone with some light-colored spots. It is a compact rock of medium to high hardness, with rounded, elongated, and elliptical components with different dimensions generally corresponding to fossil joined by a carbonated cement (Ramos and Guimarães 2005).

The most common finishing stages of external surfaces are honed and polished and, in this case, the rock color becomes grayish or grayish brown (Casal Moura 2009). The macroscopic appearance of the rock can be observed in Fig. 2.

AV limestone has nonlinear, irregular cracks with widths between 1 and 5 mm; and layers sub parallel to the slabs surface (that can probably be related to clayed materials originating clayed veins) with variable thickness, between 2 and 10 mm, and showing darker color (see Fig. 3).

Damaged AV slabs were collected from the building façade and in these an increase in cracking, loss of material (see Fig. 4), swelling—shrinking and the appearance of powdery material was clearly detected (see Fig. 5).



**Fig. 3** Visible cracks, fissures, and layers of on an example of a sound AV limestone slab



**Fig. 4** Fractures and loss of material on AV slab in the kerf/slot region where the slab interacts with the anchoring system



**Fig. 5** Powdery clay material on the AV slabs

### Microscopic description

Under the stereoscopic microscope, AV limestone has a complex structure composed by rounded and elliptical elements, consisting of micritic calcite (pellets) and others made of espatic calcite as fossils and oolites structures. Displays hydrated brown oxides iron on the edge of the components and a few quartz grains (Ramos and Guimarães 2005). At a microscopic level the clay content was not possible to observe due to AV matrix/cement exceptionally fine texture (no resolution under stereoscopic microscope) and due to this, the clay particles are not distinguished between the calcite ones.



## Physical and mechanical properties

Reference physical and mechanical properties are presented in Table 1 adapted from Casal Moura (2007). AV average properties are within the recommended minimum characteristic value for stone cladding applications regarding flexural strength (10–12 MPa) and open porosity (<5%) (Pinto et al. 2006). Based merely upon this information an architect working with AV limestone might consider that the basic characterization is enough to perform a suitable material selection. However, as this work will emphasize, in projects located in certain external environments and in ventilated facades where the slabs are installed above the 2nd floor, it is important to assure that the stone performance will fulfill the required behavior.

## Degradation analysis methodology

To understand AV limestone degradation phenomena and to contribute to a potential standard testing methodology on limestone clay content evaluation, degraded samples were examined and photographed under a stereoscopic microscope (Olympus SZ 51).

Physical and mechanical properties of AV limestone sound and degraded specimens (collected from the building facade) were tested for water absorption at atmospheric pressure—testing methodology according to EN 13755:2001 and were tested to evaluate Schmidt hammer rebound hardness (Aydin and Basu 2005). As in previous works developed by Amaral et al. (1999) and by Amaral (2005), Schmidt rebound test was selected because of its ability to provide quick readings of macrohardness for stone materials (Proceq 1977). Despite the natural heterogeneity of AV limestone specimens, it is expected that this method can also give consistent results, even if a considerably high number of tests is needed (as in most rock mechanics measurements). To have no prior restrictions, the Schmidt hardness of AV specimens, was obtained as the arithmetic mean of at least

40 surface readings sequentially measured on a regular grid, which gives a representative measurement AV sound and degraded slabs.

X-ray diffraction qualitative analysis was made to determine AV chemical composition; Clay fraction analysis was performed on grinded AV samples in a ring mill. Two portions of 100 g of grinded sample were chemically attacked with concentrated hydrochloric acid Scharlau 37% to annul the carbonate fraction by effervescence reaction. Samples were then washed and decanted several times to clean the excess of acid and then dried in an oven (at 110°C) before being weighed.

A portion of 10 g dried sample at 110 °C was taken to calcination on a muffle for 3 h at 400 °C to determine the organic matter content (Davies 1974).

Milled samples were analyzed by X-ray diffraction (XRD) in the laboratory of CENIMAT (NOVA-SST) using a Rigaku Dmáx IIIC apparatus, with an X-ray  $\lambda$  CuK $\alpha$ 1 for 2 $\theta$ , 40 kV at 30.000 ma.

AV degraded slabs and clay fraction samples obtained after drying, were coated with gold and chemical analyzed in the Earth Sciences Department of NOVA-SST using a SEM (JEOL 330A) associated with a Tracor (EDS) microprobe.

## Results and discussion

Degradation consequences on AV limestone are clear and easily identified from the fissures, cracks, swelling-shrinking and material loss, but this research aims to purpose a suitable testing method to explain the degradation causes and the problem detected.

Laboratory determinations of clay content in AV degraded specimens were highly informative and detected 18% of clay and almost no organic matter (0.49%). As studied by Gutiérrez et al. (2012) and Turner et al. (2017), clay content is highly variable in AV limestone and it is usually > 10%. This is due to strong heterogeneity at different levels: (1) At a geological level; (2) At the quarry level; (3) At the limestone panels level which present heterogeneities both across the façade and within the stone itself. The orientation of these bedding planes explains the widespread scaling phenomena which are developed along the exterior surface of the panels (Gutiérrez et al. 2012).

These results show that AV is not pure limestone but a marly limestone. After drying, this clay shows high retraction cracks, as it can be observed under the stereoscopic microscopic (Fig. 6).

The marly limestones are constituted by calcite and 15–25% of clay minerals and typically, within the same layer the upper part is richer in clay. Marly limestones durability studies have reported that the higher the clay content, the lower the durability of the material exposed to a certain

**Table 1** Physical and mechanical average properties of the AV limestone adapted from Casal Moura (2007)

Compressive strength	147	MPa
Compressive strength after freeze–thaw test	147	MPa
Flexural strength	14.8	MPa
Apparent density	2640	kg/m <sup>3</sup>
Water absorption at atmospheric pressure	0.5	%
Open porosity	1.2	%
Thermal dilatation coefficient	3.1	$\times 10^{-6}$ per °C
Abrasion resistance	2.6	mm/200 m



**Fig. 6** Clay content of sound AV limestone with retraction cracks

environment since most marly limestones suffer serious problems of chipping and scaling (Beretta et al. 2001; Passarello et al. 2002; Vecchiattini et al. 2018). This compositional heterogeneity can be overcome only through a careful selection of raw materials, usual practice in historical projects for construction of major importance but less obvious in more recent times (Beretta et al. 2001; Passarello et al. 2002; Vecchiattini et al. 2018).

XRD mineralogical analysis on AV degraded specimens (Fig. 7) revealed the presence of calcite, a small amount of quartz and montmorillonite (expansive clay mineral from smectite group); no iron oxides were detected by this technique. As pointed by Gutiérrez et al. (2012), montmorillonite is a very harmful clay type. This specific clay type belongs to the expansive variety, and thus suffers intraparticle swelling. This clay type can intake considerable water volumes, increasing swelling and reducing the stone strength, therefore facilitating the stone disintegration even for moderate swelling pressures.

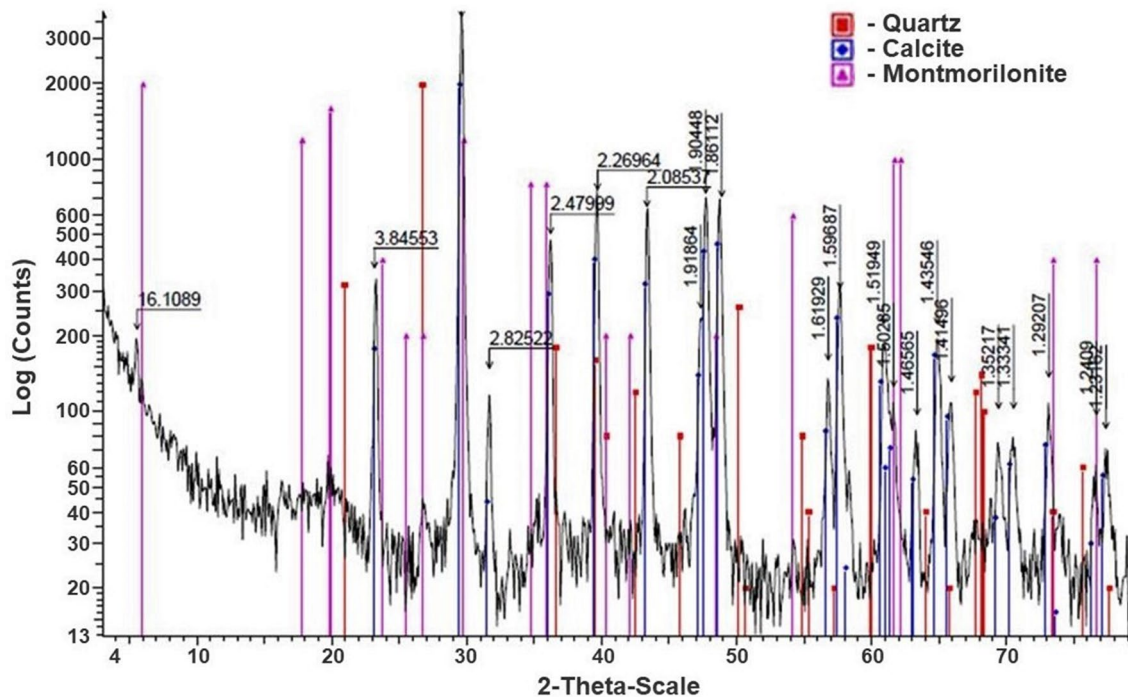
According to a study published by Delgado Rodrigues (1976), swelling/shrinking phenomena, is typically associated with the hydration of crystalline substances and with the intra and interparticle adsorption and absorption of water by clay and a few other minerals having peculiar crystalline

structures such as the smectites detected in this research with AV limestone (Delgado Rodrigues 1976).

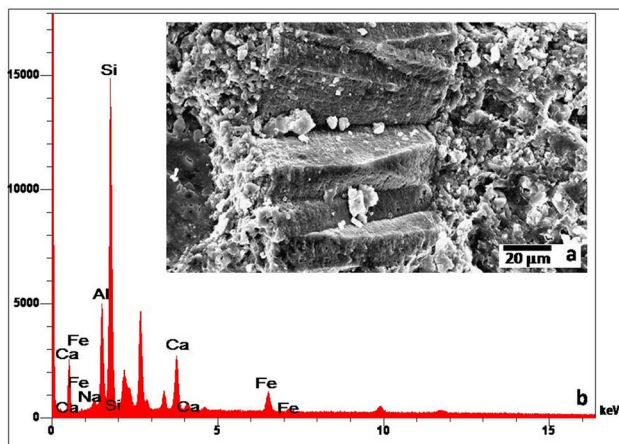
As stated by Delgado Rodrigues (1976) and by Delgado Rodrigues (2001), the harmful role of clays derives from their capacity to induce deformation inside the rock structure. When this deformation is restrained from increasing, the clay components build up internal stresses, up to the point of causing rupture and showing damaging results such as the ones presented in this case study (Delgado Rodrigues 1976; Delgado Rodrigues 2001).

SEM observations allowed a detailed analysis of the layers sub parallel to the slabs surface and confirmed the presence of clayed veins previously mentioned on the petrographic description of AV degraded specimens (Fig. 8a). The microprobe analysis on the clay fraction (Fig. 8b) confirmed the presence of a Ca-montmorillonite, a very expansive clay of the smectite group.

As reported in previous studies by Delgado Rodrigues (1976), Delgado Rodrigues (2001) and by Sebastián et al. (2008), the presence of clays inside a solid rock has always a negative potential. Clay minerals are linked to the stones mechanical performance reduction and affect other physical properties, particularly when durability is concerned (Delgado Rodrigues 1976). Many authors have pointed out the



**Fig. 7** XRD analysis of sound AV limestone



**Fig. 8** SEM observation of a clay vein on AV limestone (a) and microprobe analysis of clay fraction (b)

important part that clays play in natural stone performance and many studies have been dealing with limestone degradation due to this cause (Delgado Rodrigues 1976; Delgado Rodrigues and Jeremias 1990; Drew and Woods 1970; Félix 1988; Rodríguez-Navarro et al. 1997; Struillou 1968; Thénoz et al. 1968; Tourenq and Dennis 1970; Weinert 1968; Wiis and McLane 2000). Clays, in this study Ca-montmorillonite, are phyllosilicates with a pronounced laminar crystalline structure. Their peculiar structure can undergo swelling-shrinking when water or other polar liquids interact

**Table 2** Water absorption at atmospheric pressure on sound and degraded AV specimens

Water absorption at atmospheric pressure [%]	
Sound Specimens Mean value $\pm$ SD	Degraded Specimens Mean value $\pm$ SD
0.5 $\pm$ 0.01	1.0 $\pm$ 0.01

with them. Expansive clays such as smectites can expand their crystal lattice as an intraparticle swelling mechanism, while others are non-expansive (kaolinite and illite) (Delgado Rodrigues 1976; Delgado Rodrigues 2001). The extent of degradation will depend on several factors, namely on the type and amount of clays, on their form of incidence inside the stone, on the interparticle and interlayer distances of clay particles, as well as on the composition and availability of percolating solutions (Delgado Rodrigues 1976; Delgado Rodrigues 2001).

Water absorption at atmospheric pressure of sound and altered specimens of AV Limestone are shown in Table 2.

Water absorption (%) comparison between reference and degraded AV limestone specimens show an increase of 50%, denoting that the degraded slabs will absorb more water because they have more fissures and cracks due to the loss of material caused by the limestone swelling-shrinkage. Similar results were reported in previous studies, where water



absorption growth affected the limestone degradation and represents an important variable that may change with time, especially in the subsurface layer where the main physical, chemical, and biological attacks occur (Bellopede et al. 2016; Delgado Rodrigues 1976; Delgado Rodrigues and Jeremias 1990; Delgado Rodrigues 2001; Drew and Woods 1970; Félix 1988; Rodríguez-Navarro 1997; Sebastián et al. 2008; Struillou 1968; Thénoz et al. 1968; Tourenq and Denis 1970; Weinert 1968; Wiis and McLane 2000).

Schmidt hammer rebound hardness results are displayed in Table 3. Results corroborate the previous microstructural and physical analysis and show a decrease of 38% in the rebound hardness on the degraded slabs confirming AV loss of structural performance linked to the macroscopic features detected: (1) increase of the fractures along slabs width and thickness; (2) opening of structural plans—which caused structural breakdown of planes; (3) disaggregation of fragments by clay swelling-shrinkage.

Experimental results seem to corroborate that the presence of expansive clay minerals and the existence of stratification features and irregular fractures (normally parallel to the surface of the rock in the facade) are the main causes for AV degradation and loss of mechanical performance.

Results suggest that the selected experimental methodology based upon macroscopic analysis, clay content evaluation, X-Ray mineral diffraction analysis and microscopic examination can be employed as a suitable way to quantify AV degradation process.

The suggested approach can contribute to the draft of a standard method for previous knowledge of the structure and mineralogical composition of carbonate rocks, allowing a proper and suitable selection of these construction materials in buildings where they can exhibit all their aesthetic and functional characteristics preventing possible economical and safety negative impacts.

AV limestone is one of the most known and chosen dark-colored limestone extracted in Portugal. Normally, it is used in facades with polished and honed finishing surfaces. But this material is frequently seen in various other applications such as external and internal paving with moderate traffic, masonry, stonework, furniture, among others. Despite its broad use, AV limestone shows limitations depending on the external environmental conditions. Regions with high-temperature variation, high humidity conditions, coastal

environments with saline fog spray (such as the ones presented in this case study) are typically aggressive and contribute to permanent structural damages after a few months or years of application, for these reasons AV limestone can be less suitable for applications in external environments. The experimental method and analysis reported in this research work reinforce the need for proper systematic characterization. After 5 years installed on a ventilated, AV limestone started showing degradation signs detected through color changes, loss of gloss, cracks and fissures that caused instability and rupture on several slabs. These limitations have been previously pointed out by other authors mentioning that AV limestone should preferably in interior environments (Casal Moura 2009).

## Conclusions and final remarks

With this study, it was possible to highlight the importance of complementary testing methodologies for natural stone when clay materials may exist to allow the identification and understanding of the potential stone degradation in certain external environments. AV limestone slabs were installed in a ventilated facade fixed with a kerf system on a building in Valencia (Spain). Sound and degraded specimens were studied to find the source of the problem.

AV limestone is a natural stone whose physical–mechanical properties allow it to be used as a product in a wide range of in interiors and exteriors applications. However, the application of this stone on the outside environment must be conducted under certain technical constraints.

Due to the presence of clay minerals (Ca-montmorillonite) AV limestone is sensitive to temperature variations and sensitive to contact with water or moisture, originating alterations in color, increasing fracturing, swelling, and leading to loss of material. When installed in areas near the sea under saline and humid environments the degradation process can be accelerated.

Experimental results revealed large amounts of expandable clays in the studied limestone, depicted through slabs with high fracturing potential and weakness of structural plans (stratification and stylolites) parallel to the surface of the slabs. These features lead to physical and mechanical changes in the facade. Clays have a critical play in this limestone mechanical performance and AV swelling/shrinkage will change according to the environmental conditions. Water and humidity in exterior walls can penetrate through the stone cladding slabs causing the expansion of the clay minerals and originating powdery material. The areas surrounding the main rock components (pellets, oolites, fossils) are also sensitive areas to temperature and water circulation.

Very few projects ask for clay analysis during the stone selection stage and due to this the swelling potential of

**Table 3** Schmidt hammer rebound hardness for sound and degraded AV limestone

Schmidt hammer rebound hardness [Hammer rebound units]	Sound	Degraded
Mean value $\pm$ SD	45.0 $\pm$ 5.0	28.0 $\pm$ 7.0
Variance coefficient [%]	10.0	14.0

most natural stones is not properly listed to establish future performance.

As a final remark the work demonstrates that the selected test set-up and chosen methodology may help to bring clear information on a stone selection procedure required to be conducted before starting the application of limestone materials such as AV. Complementary studies of the rock mineralogy, microscopic and petrographic analysis, as well as an environmental assessment of the area, are important to advise the best solutions for the application of natural stones to prevent the material's degradation, thus contributing to avoid negative safety, economic and aesthetic impact.

**Acknowledgements** The authors are grateful to Professor Francisco Braz Fernandes (CENIMAT/NOVA SST) for the preparation of the XRD spectra and to Dra. Maria Eduarda Ferreira for the help in the determination of the clay fraction content.

**Author contributions** VP: Conceptualization, resources, methodology, formal analysis, writing-reviewing and editing. PMA: Conceptualization, formal analysis, writing-reviewing and editing. JARS: conceptualization, resources, methodology, formal analysis, writing-reviewing and editing. CG: Conceptualization, formal analysis, writing-reviewing and editing.

**Funding** V. Pires gratefully acknowledges the support of Fundação para a Ciência e Tecnologia (FCT) under the project UIDB/04449/2020 e UIDP/04449/2020.

**Availability of data and material** The authors confirm that the data supporting the findings of this study are available within the article [and/or] its supplementary materials.

**Code availability** Not applicable.

## Declarations

**Conflict of interest** The authors have no conflicts of interest to declare. All co-authors have seen and agree with the contents of the manuscript and there is no financial interest to report. Authors certify that the submission is original work and is not under review at any other publication.

**Ethics approval** Not applicable.

**Consent to participate** Informed consent was obtained from all individual participants included in the study.

**Consent for publication** All co-authors have given their consent for publication.

## References

- Aly N, Wangler T, Török A (2018) The effect of stylolites on the deterioration of limestone: possible mechanisms of damage evolution. *Environ Earth Sci* 77(565):1–11. <https://doi.org/10.1007/s12665-018-7746-2>
- Amaral PM (2005) Mechanical behaviour of ornamental stones. Dissertation, Instituto Superior Técnico, Lisboa
- Amaral PM, Guerra Rosa L, Cruz Fernandes J (1999) Determination of Schmidt rebound hardness consistency in granite. *Int J Rock Mech Min Sci* 36(6):833–837. [https://doi.org/10.1016/S0148-9062\(99\)00040-6](https://doi.org/10.1016/S0148-9062(99)00040-6)
- Aydin A, Basu A (2005) The Schmidt hammer in rock material characterization. *Eng Geol* 81(1):1–14. <https://doi.org/10.1016/j.enggeo.2005.06.006> (ISSN 0013-7952)
- Baud P, Wong TF, Zhu W (2014) Effects of porosity and crack density on the compressive strength of rocks. *Int J Rock Mech Min Sci* 67:202–211. <https://doi.org/10.1016/j.ijrmms.2013.08.031> (ISSN 1365-1609)
- Baud P, Rolland A, Heap M et al (2016) Impact of stylolites on the mechanical strength of limestone. *Tectonophysics* 690(1):4–20. <https://doi.org/10.1016/j.tecto.2016.03.004>
- Bellopede R, Castelletto E, Marini P (2016) Ten years of natural ageing of calcareous stones. *Eng Geol* 211:19–26. <https://doi.org/10.1016/j.enggeo.2016.06.015>
- Beretta C, Cimmino F, Piaggio M (2001) Il degrado del calcare marinoso del Monte Antola in antichi monumenti del Genovesato: studio petrografico-applicativo. R. Sandrone (Ed.), *Le pietre ornamentali della montagna europea*, Luserna S. Giovanni/Torre Pellice, 10–12 June, Associazione Georisorse e Ambiente, Turin, pp. 147–155
- Casal Moura A (2007) Mármore e calcários ornamentais de Portugal. INETI—Instituto Nacional de Engenharia, Tecnologia e Inovação, p 383
- Casal Moura A (2009) ORNABASE, Catalogue of Portuguese Ornamental Stones. Online version: [http://rop.ineti.pt/rop/index\\_en.php](http://rop.ineti.pt/rop/index_en.php)
- Cultrone G, Benavente D et al (2008) Swelling damage in clay-rich sandstones used in the church of San Mateo in Tarifa (Spain). *J Cult Herit* 9(1):66–76. <https://doi.org/10.1016/j.culher.2007.09.002>
- Davies BE (1974) Loss-on-ignition as an estimate of soil organic matter. *Soil Sci Soc Am Proc* 38:347–353
- Delgado Rodrigues J (1976) Estimation of the content of clay minerals and its significance in stone decay. In: *Proc. 2<sup>nd</sup>. Int. Symp. on Deterioration of Building Stones*, Athens
- Delgado Rodrigues J (2001) Swelling behaviour of stones and its interest in conservation. *An Appraisal. Mater De Constr* 5:183–195
- Delgado Rodrigues J, Jeremias FT (1990) Assessment of rock durability through index properties. In: *Proceeding of International Congress of I AEG*, Amsterdam, Edited by D.G. Price, Balkema, pp 3055–3060
- Dias L, Rosado T, Candeias A et al (2020) A change in composition, a change in colour: The case of limestone sculptures from the Portuguese National Museum of Ancient Art. *J Cult Herit* 42:255–262. <https://doi.org/10.1016/j.culher.2019.07.025>
- Drew ED, Woods HD (1970) Deterioration of riprap at Waddell Bluffs, Iv-SCr-1, and an evaluation of physical tests as a method of determining the durability of stone for riprap. *Bank and Shore Protection in California Highway Practice*, Dep. Pub. Works Bus. Transp. Agency, Sacramento Dep
- El-Gohary M (2007) Degradation of limestone buildings in Jordan: working effects and conservation problems “A critical study according to international codes of practice.” *Adumatu* 16:7–24
- EN 13755 (2008) Natural stone test methods—determination water absorption at atmospheric pressure. Brussels: Europeans Committee for Standardization
- Ercoli L, Rizzo G, Algozzini G (2004) Petrography and decay of a marly limestone in the cloister of a medieval cathedral in Sicily. *Environ Geol* 46(34):414–420. <https://doi.org/10.1007/s00254-004-1042-z>



- Espinosa-Marzal R, Scherer G (2010) Advances in understanding damage by salt crystallization. *Acc Chem Res* 43:897–905. <https://doi.org/10.1021/ar9002224>
- Félix C (1988) Comportement des grès utilisés en construction sur le Plateau suisse. In: *Proc. Int. Symp. On the Engineering Geology of Ancient Works, Monuments and Historical Sites*, Athens, Edited by P. Marinos and G. Koukis, Balkema, pp. 833–841
- Gutiérrez J, Mas A, Gil E et al (2012) Clay-related damage in rain-screen walls built with natural stone coverings. *Constr Build Mater* 29:357–367. <https://doi.org/10.1016/j.conbuildmat.2011.10.060>
- Huang B, Fu S, Lu W et al (2020) Experimental investigation of the breaking load of a dowel-pinned connection in granite cladding. *Eng Struct* 215:110642. <https://doi.org/10.1016/j.engstruct.2020.110642>
- Ivorra S, García-Barba J, Mateo M et al (2013) Partial collapse of a ventilated stone façade: diagnosis and analysis of the anchorage system. *Eng Fail Anal* 31:290–301. <https://doi.org/10.1016/j.engfailanal.2013.01.045> (ISSN 1350-6307)
- Passarello V, Camaiti M, Canova R (2002) The decay of marly-limestones: individuation of the products for their conservation. *Proceedings of Conference Art & Chimie, Les Polymers*, Paris
- Pereira C, Brito J, Silvestre JD (2018) Contribution of humidity to the degradation of façade claddings in current buildings. *Eng Fail Anal* 90:103–115. <https://doi.org/10.1016/j.engfailanal.2018.03.028>
- Pinto ACR et al (2006) *Manual da Pedra Natural para Arquitectura*, 1st edn. Cedintec, Lisbon
- Pires V, Silva Z, Simão J et al (2009) “Bianco di Asiago” limestone pavement—degradation and alteration study. *Constr Build Mater* 24:686–694. <https://doi.org/10.1016/j.conbuildmat.2009.10.040>
- Proceq (1977) *Operating instructions—concrete test hammer*. PRO-CEQ, S.A., Zurich
- Ramos JMF, Guimarães F (2005) *Estudo Mineralógico e Petrográfico da rocha denominada Azul Valverde*. Relatório n° 54/2005, INETI—Instituto Nacional de Engenharia, Tecnologia e Inovação
- Rodríguez-Navarro C, Hansen E, Sebastian E et al (1997) The role of clays in the decay of ancient Egyptian limestone sculptures. *JAIC* 36:151–163
- Rother E, Eggers T, Cassar J et al (2007) Stone properties and weathering induced by salt crystallization of Maltese Globigerina Limestone. *Geol Soc* 271:189–198. <https://doi.org/10.1144/GSL.SP.2007.271.01.19>
- Sebastián E, Cultrone G, Benavente D et al (2008) Swelling damage in clay-rich sandstones used in the church of San Mateo in Tarifa (Spain). *J Cult Herit* 9(1):66–76. <https://doi.org/10.1016/j.culher.2007.09.002>
- Siegesmund S, Grimm Wd, Durrast H, Ruedrich J (2010) Limestones in Germany used as building stones: an overview. In: Smith BJ, Gomez-Heras M, Viles HA & Cassar J (eds) *Limestone in the Built Environment: Present-Day Challenges for the Preservation of the Past*. Geological Society, London, Special Publications, 331, 37–59
- Silva ZSG, Simão JAR (2009) The role of salt fog on alteration of dimension stone. *Constr Build Mater* 23(11):3321–3327. <https://doi.org/10.1016/j.conbuildmat.2009.06.044>
- Struillou R (1968) *Prévision de l'altérabilité des matériaux employés en génie civil*. Colloque de Géotechnique, Toulouse
- Thénoz B, Pérami R, Capdecombe L (1968) *Sur l'arénisation et l'altération en boules des granites*. Actes de la Soc. Linnéenne de Bordeaux, Vol. Spécial, Congrès AFAS 1967, Bordeaux
- Tourenq C, Denis A (1970) *La résistance à la traction des roches*. LCPC Rapport de Recherche, No.4, Paris
- Turner HE, Gradstein FM, Gale AS et al (2017) The age of the Tojeira Formation (Late Jurassic, Early Kimmeridgian), of Montejusto, west-central Portugal. *Swiss J Palaeontol* 136:287–299. <https://doi.org/10.1007/s13358-017-0137-6>
- Vecchiattini R, Fratini F, Rescic S et al (2018) The marly limestone, a difficult material to restore: the case of the San Fruttuoso di Capodimonte Abbey (Genoa, Italy). *J Cult Herit* 34:1–12. <https://doi.org/10.1016/j.culher.2018.01.019>
- Veniale F, Setti M, Rodríguez-Navarro C (2001) Role of clay constituents in stone decay processes. *Mater De Constr* 263–264:163–182. <https://doi.org/10.3989/mc.2001.v51.i263-264.362>
- Weinert H (1968) *Engineering petrology for roads in South Africa*. *Eng Geol* 2(6):363–395
- Wiist RAJ, McLane J (2000) Rock deterioration in the royal tomb of Seti I, Valley of the Kings, Luxor Egypt. *Eng Geol* 58:163–190
- Zbyszewski G, Manuppella G, Ferreira OV (1971) *Carta geológica de Portugal à escala 1/50000, folha 27-C (Torres Novas)*. Serviços Geológicos de Portugal, Lisboa

**Publisher's Note** Springer Nature remains neutral with regard to jurisdictional claims in published maps and institutional affiliations.

## Authors and Affiliations

V. Pires<sup>1</sup>  · P. M. Amaral<sup>2</sup> · J. A. R. Simão<sup>3</sup> · C. Galhano<sup>3</sup>

P. M. Amaral  
Pedro.Amaral@tecnico.ulisboa.pt

J. A. R. Simão  
jars@fct.unl.pt

C. Galhano  
acag@fct.unl.pt

<sup>1</sup> HERCULES Laboratory, Institute for Advanced Studies and Research, University of Évora, Largo Marquês de Marialva 8, 7000-809 Évora, Portugal

<sup>2</sup> IDMEC, Instituto de Engenharia Mecânica, Instituto Superior Técnico, University of Lisbon, Av. Rovisco Pais, 1049-001 Lisboa, Portugal

<sup>3</sup> GEOBIOTEC and Department of Earth Sciences, Nova School of Science and Technology, Campus de Caparica, 2829-516 Caparica, Portugal