

Illinois State University

ISU ReD: Research and eData

Alumni News

Alumni Engagement

9-1975

Illinois State University Alumni News, Vol. 8, No. 2, September 1975

Illinois State University

Follow this and additional works at: <https://ir.library.illinoisstate.edu/an>

Recommended Citation

Illinois State University, "Illinois State University Alumni News, Vol. 8, No. 2, September 1975" (1975).
Alumni News. 34.

<https://ir.library.illinoisstate.edu/an/34>

This Book is brought to you for free and open access by the Alumni Engagement at ISU ReD: Research and eData. It has been accepted for inclusion in Alumni News by an authorized administrator of ISU ReD: Research and eData. For more information, please contact ISUReD@ilstu.edu.



The campus of the '70s

Few physical changes are expected in this campus view during the remainder of the 1970s. The completion of the new Milner Library on the north campus in 1976 will mark the end of current plans for major buildings. Alumni may wish to obtain a color print of this August, 1975, aerial photo. (See Page 2)

Vol. 8, No. 2
September
Nineteen Seventy Five

illinois state
university
**alumni
news**

Bone looks at change

Continued from Page 1

American life more. The large proportion of young people in our society has brought changes in economy, in our institutions—churches, schools, colleges, in every walk of American life.”

“In the first place one has to say that most young people are wonderful. They give themselves to hundreds of worthy causes with little reward and they do more of our work than many realize. So often the few who err get the headlines. . . . The big question for the last quarter of our century is whether all these young people will accept responsibility when they reach the prime years of their lives. I feel optimistic for the long run.”

At present I detect a certain negativism or cynicism among young people—perhaps a result of Watergate and the seeming inability of the government to resolve problems of ecology, of environment, of social injustice, and corruption. None the less, I, too, am optimistic as Dean Helgeson is. I trust that the graduate will continue his civic interest and be a *responsible* citizen.

Nearly two hundred years ago one of our Founding Fathers said, “A truly democratic society is dependent upon an educated electorate.” The educational institutions must prepare citizens for the world in which they live and to seek the greatest good for their fellowmen. Illinois State University is trying to educate people for our society. There are all kinds of teachers and all kinds of students; yet, I firmly believe that the vast majority are fine people seeking to continually improve the university for the benefit of the future generations in a democratic society.

Robert G. Bone

Parents Day on campus scheduled for Nov. 1

All parents of Illinois State students are being invited to the campus Saturday, Nov. 1, for annual Parents Day festivities. All parents are members of the ISU Parents Association.

Coordinating activities around the state for ISU parents centers with the association headquarters in Rambo House at ISU. Mr. and Mrs. Ralph Lawley, 105 Koehn Dr., Danville, serve as the elected co-presidents of the association.

New co-vice presidents are Mr. and Mrs. Elmer Boesdorfer, Pleasant Plains, and Mr. and Mrs. Donald Berg, 447 Powers Lane, Decatur, are secretary and treasurer.

Activities on Nov. 1 start with registration and bus tours of the campus from the University Union at 10 a.m. Open houses also start at 10 a.m. for the Center for Visual Arts, various University museums and residence halls. Walking tours of the campus and a Union-Auditorium tour also are being scheduled during the day.

An 11 a.m. luncheon meeting is scheduled in the Union and the football game with Northern Illinois kicks off at 1:30 p.m. in Hancock Stadium.

Evening activities include a dinner at 5:30 p.m. in the Union Ballroom and entertainment by student organizations from 7:30 to 9 p.m. in the Ballroom.

A bonus attraction for parents who stay overnight will be the 8 p.m. Union Auditorium presentation of the Preservation Hall Jazz Band at 8 p.m. Sunday, Nov. 2.

Reservations for the luncheon, dinner and game may be made with Parents Association, Rambo House, although ticket requests for the jazz concert should be directed to the Union Auditorium (phone 309-438-2222).

Greetings from Rambo House

I would like to take this opportunity to extend greetings to all Illinois State University alumni and members of the 1974-75 Honor Roll in this special edition of the Alumni News. We are indeed grateful to those of you who made contributions to the Illinois State University Foundation aiding in the support of many student oriented programs which are annually funded by the Foundation. We hope that you will continue to support these outstanding programs and will actively participate in the alumni programs of Illinois State.

The Board of Directors of the Alumni Association has been most pleased with the participation of alumni in programs during the 1974-75 year and would welcome your suggestions for ways in which we can improve or expand the programs for alumni for 1976-77. The Board does appreciate your past, continued and future support.

The Alumni Board, the Alumni Executive Committee, the Parents Association and the University Foundation Board of directors have been meeting regularly during the 1974-75 year. We hope the programs planned by these groups are beneficial to the University, its alumni, parents, Honor Roll members, and all others associated with the University. We do encourage you to actively participate. We look forward to meeting more of you personally as participation in these programs becomes more widespread and serves for the betterment of Illinois State University.

Milt Weisbecker

births

A son—Paul Jacob—on July 10 to Linda (Sobbe, '67) and Stan Tumidolsky, in Cincinnati, Ohio.

A son—Stephan Donald—on June 15, 1974, to Rosemarie and Donald Theesfeld, '68, in Des Plaines.

A daughter—Kelly Suzanne—on March 25, 1975 to Julie (Jones, '67) and Richard D. Bucknam in Sweden.

A son—Jesse Lakota—on June 3, 1975, to Janine E. ('70) and Robert J. Longo in Beckley, W. Virginia.

A daughter—Belinda Darlene—on November 28, 1974, to Letha (Bery, '67) and Darell Well in Villa Grove.

A son—Robert Alan—on December 26, 1974, to Shirley (Stumm, '67) and Michael Drobnak, '64 in Glenwood.

A son—Christopher Lynn—on May 9, 1975, to Judith (Ahring '71) and Roger Lynn Dameron, in Fairbury.

A daughter—Emily Jean—on May 29, 1975, to Peggy (Harper, '65) and Ross Hodel, '65, in Columbus, Ohio.

A daughter—Jennifer Margaret—on April 23 to Chrislette (Giacinto, '73) and James Cherveney in Streator.

A son—Christopher David—on September 6, 1974, to Jeanne (LaDouceur, '71) and David M. Mabbitt, '72, in Schaumburg.

A son—Marc Anthony—on May 1, 1975, to Carole (Robert '72) and Gregory J. Mroczkowski in Lansing.

A daughter—Erin Anastasia—on May 10, 1975, to Margaret (Long '61) and George Haldorson, '71, in Galena.

A son—James Christopher—on May 17, 1975, to Gail Ann (Holdridge '71) and Bruce Mack '70 and '71, in Joliet.

A daughter—Natalie Lynn—on June 4, 1975, to Carol Ann (Thorp, '71) and Charles Van Rossum in Veghel, The Netherlands.

A daughter—Deena Clarene—on February 8, 1975 to Mary (Edwards, '69) and Edward Hayes (MS '70) in Henry.

A son—Mark Thomas—on May 19, to Anna (Bates, '68) and Thomas McKnight in Marine City, Mich.

Twins, George Allen and Paul Arthur, on October 31, 1974 to Beverly (Barke '68) and Henry A. Hart in Streator.

A daughter—Damen Marie—on March 9 to Sandra (Nesbitt, '70) and Joseph Bobst in Downs.

illinois state
university
**alumni
news**

Vol. 8 No. 1 September, 1975

Published by Illinois State University, Normal, Illinois, 61761. Issued in March, July, September and December by the Office of Alumni Services, Rambo House.

DIRECTOR OF ALUMNI SERVICES and DEVELOPMENT: Milton Weisbecker
EDITOR: J. Russell Steele
PHOTO SERVICE: Nelson R. Smith
Second class postage paid at Normal, Ill., 61761

1975-76
Officers and Directors
ISU Alumni Association

Betty Wolfe Wheeler, '40,
President, Streator
Eugene P. Jontry, '58,
Vice President, Chenoa
Gordon L. Fidler, '51,
Secretary, Ottawa
John L. Baldini, '41,
Treasurer, Blomington
E. Burton Mercier, '50,
Executive Committee, Normal
Donald Schroeder, '56
Executive Committee,
Arlington Heights
W. Charles Witte, '71,
Executive Committee
Bloomington
Tom Andes, '65,
Belleville
Marion F. Cole, '42,
Chicago
Gerald Curl, '54,
Springfield
Kathleen Gentes, '62,
Fox River Grove
James L. Fisher, '56,
Towson, Maryland
Janet Beardsley Fulk, '64,
Pekin
Joan Love Guenther, '69,
Naperville
Donald B. Johannes, '59,
Belvidere
Richard Manahan, '65,
Bloomington
LeRoy G. Noel, '56,
Iowa City, Iowa
Dorothy Sain Portee, '69,
Bloomington

Color aerial

Color prints suitable for framing of the cover page campus aerial taken by Alumni Editor J. R. Steele may be obtained by mail or in person at Photo Services, General Services Building. The cost by mail is \$7.50 for an 8 x 10, \$12.50 for an 11 x 14 and \$22.50 for a 16 x 20. The price is slightly lower without packaging and mailing.

Message from the President

First Bicentennial plans center on Homecoming Oct. 11

The Bicentennial Homecoming at ISU, centering around Saturday, Oct. 11 on the campus and in the community, will feature the 50th anniversary of the first Redbird Geography Tour as well as class reunions for the 10, 25 and 40 years classes (1935, 1950 and 1965).

Robert Guy Buzzard, class of 1914, president emeritus of Eastern Illinois University, plans to come from his home in California to attend the Geography Trippers Homecoming breakfast at 9 a.m. Sunday, Oct. 12 in the Circus Room of the University Union.

Buzzard, an ISU faculty member from 1923-33, led the first geography field trip in 1925. He was assisted by Mabel Crompton, now an ISU emerita professor of geography and resident of Normal.

Requests for information about the Geography Trippers reunion breakfast should be directed to James Patterson, ISU Geography Department.

Serving as chairmen of the three union classes are Preston Ensign for the class of '35, E.B. Mercier and Andy Paloumpis for the class of '50 and Richard Manahan for the class of '65.

Basic reunion plans are for a special area for an after-the-parade coffee and reserved class-year tables at the alumni reunion party and dance starting at 5:30 p.m. at the American Legion Hall on East Market Street in Bloomington. More detailed information about the class reunions can be obtained later at Alumni Services, Rambo House.

Following a number of student Homecoming events on the campus, the Homecoming parade will start at 9 a.m. with historical emphasis around the theme of ISU "ISU Changes With Our Nation," which was selected by the student-staff Homecoming committee as the official theme for the Bicentennial Year.

The Homecoming play, "Music Man," will be presented both Friday

Illinois State University is one of the strongest and healthiest public institutions of higher education in the nation as it continues to increase student enrollment and develop needed new academic programs. Among our reasons for optimism about the vitality of the University and confidence in its future are the following:

Illinois State continues to attract sizable numbers of able students. The average ACT score of the entering freshman class this fall, for example, is a full two points above the national mean and on a par with other doctoral degree granting institutions in the nation. All indications are that 1975-76 fall semester enrollments will be the highest in the history of the institution with the University serving well over 18,000 students on campus, and nearing 21,000 when off-campus enrollments are also counted. Last year we doubled the number of adult students served by continuing education programs and we anticipate another increase this year. We remain committed to an aggressive effort to attract and retain good students and are most appreciative of the assistance of our alumni in this effort.

This year the University implements several new academic programs, including new undergraduate majors in Agribusiness, Anthropology, and Office Administration. At the graduate level, we are now offering the MBA (Master of Business Administration) and MS in Accounting degrees, MFA (Master

of Fine Arts) in Art and theatre, and Doctor of Arts degrees in Economics, History and Mathematics. These new programs represent the first steps in implementing our University Academic Plan for strengthening existing programs and selectively introducing new academic programs responsive to the needs of students and society.

We are pleased that the number and amount of alumni gifts to the University Foundation have increased during this past year. The highest proportion of these contributions are used to help worthy students meet the increasing costs of obtaining a higher education. Your continued support is essential in helping your University accomplish its goals, and we hope to deserve your continued support which is so vital in assuring that no qualified student drops out of school because of financial need.

If you have not visited the University recently, we invite you to do so. You might particularly like to come to attend a cultural event in the Union Auditorium, perhaps the Chicago or Minnesota symphonies or any of several outstanding programs offered in the facility. You might also want to see the magnificent new University Library now nearing completion. We particularly welcome your participation in the Homecoming alumni activities on Saturday, October 11. As alumni, we hope you are as proud as we are of the continued progress of Illinois State University.

Respectfully,

Gene A. Budig
Gene A. Budig

and Saturday nights in the Union Auditorium and the football game matches the Redbirds with Southern Illinois University at 1:30 p.m. Saturday in Hancock Stadium.

A number of other special events were outlined in the Homecoming supplement in the July issue of Alumni News and a reservation form for ordering tickets is repeated in this issue of the alumni newspaper.

News highlights

Research plans set

Applications from alumni for the ISU Alumni High School Teachers Research Project are available from John McAteer, Research Services and Grants, at ISU. Proposals must be post-marked by Nov. 3 to qualify for the 1975-76 program.

In its second year, the program was created to help high school teachers in Illinois conduct individual research or to do research in relation to their work with students. Individual awards will not usually exceed \$500 for the research projects.

Glee Club available

The ISU Mens Glee Club, directed by Lloyd W. Farlee, is planning a Bicentennial program of "something for everyone" for presentation on the campus and throughout Illinois during the coming school year. The program will include classical, spiritual, folk and pop numbers. Clubs or organizations who wish to have the Glee Club give a program are asked to call or write David L. Schrader, chairman of the ISU Department of Music.

Tribune Charities game in Soldiers Field. A teacher at Folsom, he had also been in the drainage tile business. He was 58 years old.

Ruth Bird, a member of the ISU faculty from 1950 to 1972, died Aug. 5 in Springfield, Mo., following a short illness. An assistant professor of health and physical education, she taught in Chicago schools, at Streater High School and at Butler University prior to joining the ISU staff. Miss Bird had lived in Shell Nob, Mo., since her retirement in 1972. She earned BS and MA degrees at the University of Illinois and did graduate study at the University of Southern California. She was 57 years old.

Hazelle Anderson, assistant professor of library science who retired in 1973, died Aug. 1 in Bloomington. She was 63. Miss Anderson, whose degrees were from Augustana College, University of Illinois and Northwestern, taught in high schools in South Dakota, was on the public library staff in Montevideo, Minn., and served in library positions in Rochester, Minn., Joliet and Oak Park before joining the ISU faculty in 1960.

in memory

Bernardine S. Price, '11, on June 5, 1975.
Bertha Hafer, '26, on January 14, 1975.
Anne V. Owens, '58, in 1975.
Correction: Vera Barnes Frink, '29, on June 17, 1973, instead of Vera Barnes Bunk.
Maude Baker, '39, in 1975.
James Patrick Dwyer, '74, in Bloomington.
Mildred Weekly Martin, '26, in 1975.
Grace Patton Johnson, '35, in 1975.
Charline Porter Klause, '34, in 1975.
Zeta Kelliger Hitte, '15, on May 18, 1975.
Mary Grace Henderson, '20, on December 31, 1974.
Joseph J. Krajewski, BA '70, MSED '71, on June 5, 1974, in France. He was killed in an automobile accident. He was teaching in Europe at the time of the accident.
Ed Lesnick, '38, died August 6 in Kearney, Neb., enroute from his home in Folsom, Calif. to visit relatives in his hometown of Berlin, Wis. Lesnick, a charter member of the ISU Athletic Hall of Fame, was football co-captain for the Redbirds in 1937 and was on the College All Star Football Squad for the Chicago

Homecoming Reservation order forms

If mail orders for the following alumni events and football game tickets are received by Oct. 1 tickets will be mailed. After Oct. 1 tickets may be picked up at the Alumni Office, Rambo House, or at the registration desk, University Union, on Homecoming Day, Oct. 11. (Please make checks payable to Alumni Association, Rambo House, ISU, Normal, Ill. 61761.)

Miss _____
Mr. _____
Mrs. _____

(please print) Last Name First Name Middle Initial

Address City State Zip

HOMECOMING FOOTBALL GAME—ISU-SOUTHERN ILLINOIS UNIVERSITY Gate opens 11:30 a.m. Pregame show 12:30 p.m. Game time 1:30 p.m. Hancock Field.

Reserved tickets @ \$4 _____

General Admission

Adults @ \$3 _____

H.S. students

and children @ \$1.50 _____

Total tickets requested _____

Total amount enclosed _____

HOMECOMING ALUMNI RECEPTION 9:30-11 a.m., Ballroom, University Union. Oct. 11 Reception is open to all alumni and guests in honor of the L. W. Hacker Distinguished Alumni Award Winners.

HOMECOMING AWARDS LUNCHEON 11:30 to 1:15 p.m., Old Main Room, University Union, Oct. 11.

Tickets \$4 each Total Tickets requested _____ Total amount enclosed _____

ALUMNI REUNION PARTY 5:30 p.m.-12 Midnight, Saturday, Oct. 11, American Legion Hall, 108 East Market, Bloomington (next to Lucca's Grill) 5:30-7 p.m. Banjo Music—Free popcorn & refreshments
7-8 p.m. Buffet Dinner

8:30 to 11:30 p.m. Dance—Music by Dick Benson

Tickets \$10 per couple—\$5 single ticket

Total tickets requested _____ Total amount enclosed _____

HOMECOMING MUMS—\$3 each

No. of Mums requested _____ Amount enclosed _____

Mums may be picked up at the Alumni Registration Desk in the University Union from 9 a.m. until 1 p.m. Please present receipt for mums ordered.

1974-75 Annual Fund Report



ILLINOIS STATE UNIVERSITY FOUNDATION
Illinois State University, Bloomington-Normal, Illinois 61761, 309 438-2577

September, 1975

Dear Alumni:

The Illinois State University Foundation, working in conjunction with the Illinois State University Development Office, has had a most successful and active year. This was made possible by the generous gifts of alumni, parents, faculty-staff and other friends of the University. Actual cash gifts totaled \$166,043.01 as compared to last year's \$110,445.19. The Annual Fund, included in that total, increased by \$8,882.38 and 569 donors over last year's Annual Fund. Over \$47,000 was received from individuals that remembered Illinois State University in their wills. The gift report, found on this page, provides a breakdown of the sources of funds received.

These gifts received from you have been used for projects and programs of great benefit to Illinois State University. Projects approved for the 1975-76 year are outlined elsewhere in this Honor Roll report.

This year, at President Budig's request and under the direction of Dr. Milt Weisbecker, a Development Council was formed within the University to review all proposals for funds from the Foundation. The Development Council made recommendations to the President's Office where the proposals were again reviewed. The Foundation Board then had the recommendations of the University and were able to take action as they deemed appropriate as to priority and availability of funds.

The Foundation Board also has been involved in reviewing and revising the constitution which will be formally acted upon this 1975-76 year. The Development Office has prepared a "draft" of a long-range plan which the Foundation Board has reviewed and will finalize.

Thank you very much for your interest and support this past year. We hope you will again want to participate in supporting your University. If you have not previously given, your consideration this year will be most appreciated. Your gifts make possible programs and projects of great value to Illinois State University.

Sincerely,

Thomas N. Jacob, President
ISU Foundation

TNJ:fm

ILLINOIS STATE UNIVERSITY FOUNDATION
Balance Sheet¹
June 30, 1975

ASSETS

Cash and Receivables	\$ 53,500	
Investments (At Cost)	620,800	
Ewing Museum (Appraised Value)	172,500	
Other Assets (Real and Personal Property)	47,700	<u>\$894,500</u>

LIABILITIES AND FUND BALANCES

Liabilities		\$ -
Fund Balances:		
Current Funds	366,900	
Endowment Funds	226,400	
Other Funds	301,200	<u>894,500</u>
		<u>\$894,500</u>

ILLINOIS STATE UNIVERSITY FOUNDATION
GIFT REPORT
1974-75

Annual Fund

XII DECADE CLUB	\$ 18,500.90
Matching Gift	1,759.50
Other Annual Funds	<u>40,164.29</u>
Total	<u>60,424.69</u>
Varsity Club	18,873.42
Friends of the Arts	2,937.25
Friends of Milner	768.00
Major Gifts	47,745.27
University Living Memorial	15,623.15
Gifts in Kind	13,534.95*
Other	<u>19,671.23</u>
Total	<u>119,153.27</u>
TOTAL	<u>\$179,577.96</u>

¹This is an Unaudited Balance Sheet

*Received by Illinois State University
through the Development Office

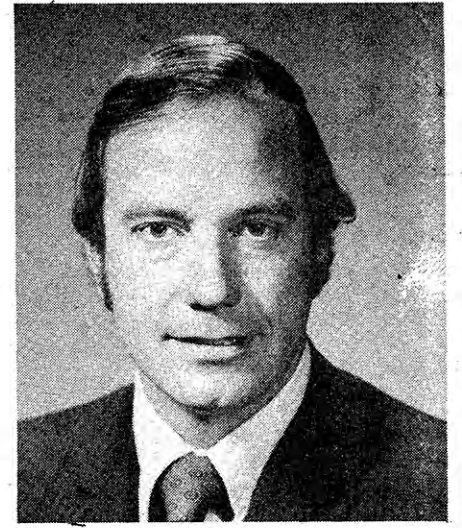
ISU Foundation Board

Board Officers

Thomas N. Jacob,
president

Robert G. Bone,
vice president

Boyce J. Huson,
secretary-treasurer



Thomas N. Jacob

Dunn, Brady, Goebel, Ulbrich, Morel
and Jacob, Bloomington



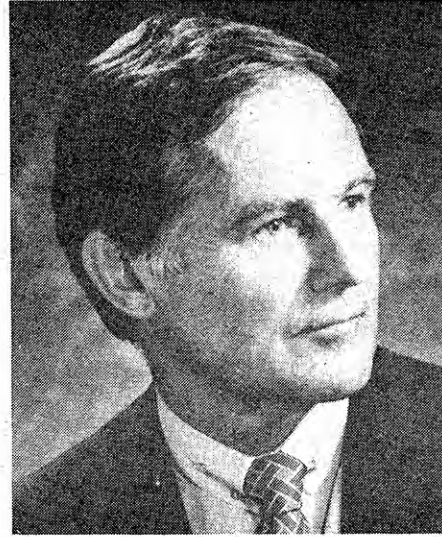
Robert G. Bone

President Emeritus, ISU



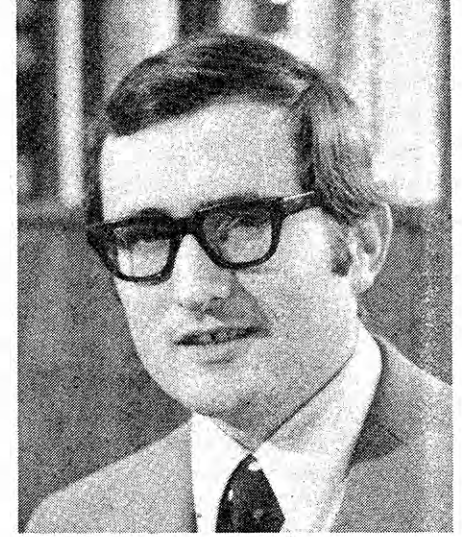
Boyce J. Huson

President, First National Bank of Normal



Paul Anderson, Jr.

President, Hasenwinkle Grain Co.,
Bloomington



Gene A. Budig

President, ISU



Roger Champagne

Professor of History, ISU



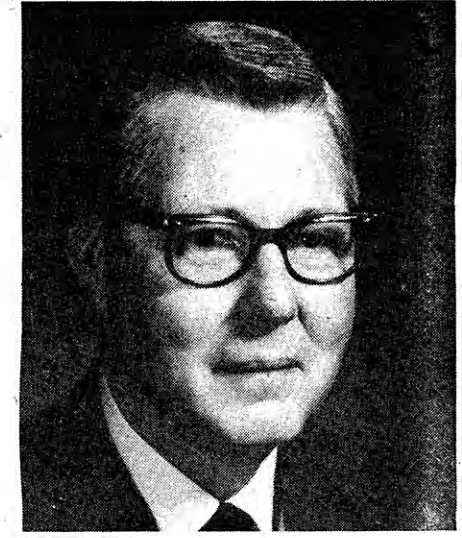
Bernice G. Frey

Emerita Professor of Health and
Physical Education, ISU



Ignatius J. Keogh

Vice President, Trust Officer, American
State Bank, Bloomington



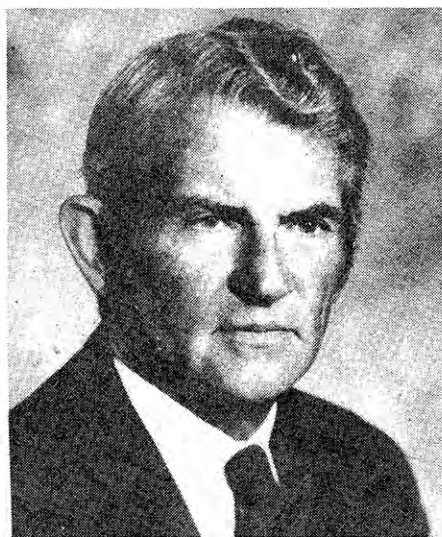
William W. McKnight, Jr.

Chairman of Board, McKnight and
McKnight Publishing Co.,
Bloomington



David E. Murray

Member, Board of Regents, Sterling



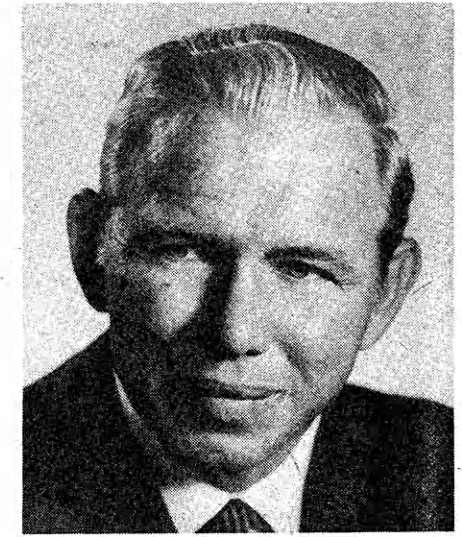
Edward B. Rust

President, State Farm Mutual Insurance
Companies, Bloomington



Betty Wheeler

President, ISU Alumni Association,
Streator



John L. Wroan, Jr.

President, J. L. Wroan and Sons, Inc.,
Normal

Honor Roll

XII Decade Club

The XII Decade Club is a leadership organization extending membership to alumni, parents, faculty-staff, and other friends of the University who contribute \$120 or more to the ISU Foundation during a year. You are encouraged to consider XII Decade Club membership. You may make one payment or make payments on any basis you wish (\$10 a month, \$30 quarterly, \$60 semi-annual). The Development Office will send you reminders for each payment.

XII Decade Club members receive a small plaque commemorating their annual gift. This recognition is small in comparison to the financial assistance the XII Decade Club provides Illinois State University.

The following listing is the XII Decade Club membership for the 1974-75 year. We are most appreciative of these gifts from new members (those listed without a number by their name) and also for the continued interest and support of the others listed. The number of years of XII Decade Club membership, not consecutive years, is listed.

The maximum number of years possible to be listed is five.

Dr. R. Roderick Abbott (4)
 Mr. & Mrs. Vernon A. Adams (4)
 Mr. Paul G. Anderson (5)
 Mr. W. R. Barrick (2)
 Mr. Thomas Frank Barton (2)
 Drs. Marvin & Cheryl Beamer
 Mr. & Mrs. Francis B. Belshe (4)
 Mr. & Mrs. Kenneth Benjamin (4)
 Mr. Jay D. Bergman (3)
 Robert J. Betts
 Bloomington Federal Savings & Loan (5)
 Bloomington Provision Company (4)
 Mr. & Mrs. Charles W. Bolen (5)
 Mr. & Mrs. John R. Bonacorsi (2)
 Miss Judith Boyer (3)
 Mr. & Mrs. Samuel E. Braden (5)
 Mrs. Ellsworth B. Buck
 Mr. Gene A. Budig (3)
 Mr. Byford B. Butler (4)
 Mr. Wesley Calef (4)
 Mr. & Mrs. Victor J. Calvert (4)
 Capen Insurance Company (3)
 Dr. Dorothy Carrington (2)
 Central Illinois Harvestore (3)
 Mr. Roger Champagne (2)
 Dr. David Chow
 Miss Frances Conkey
 Corn Belt Bank (4)
 Mr. & Mrs. Michael J. Curry (5)
 Dr. & Mrs. Donald J. D'Amico
 Mr. & Mrs. Clarence H. Davis (2)
 Mr. & Mrs. Ralph E. deWerff (3)
 Miss Louise E. Dieterle (5)
 Mr. & Mrs. Paul R. Dotson
 Mrs. John (Wilma Hibbs) Doyle (3)
 Mr. & Mrs. George Duncan
 Eaton Asphalt Company, Incorporated (5)
 Mr. Elwood F. Egelston (2)
 Mr. & Mrs. David E. Ellison (4)

Evans Associates, Architects (5)
 Mr. & Mrs. Ralph N. Ewing (5)
 Farnsworth & Wylie Consulting Engineers (4)
 First National Bank of Normal (5)
 Mr. & Mrs. Jul M. Fisher, Sr.
 Mr. Kenyon S. Fletcher (5)
 Ms. Nicolette Carras Flora
 Dr. & Mrs. George W. Forgey
 Dr. & Mrs. Walter H. Friedhoff
 Mr. Gene Froebe (2)
 Mr. & Mrs. Gerald L. Girard (4)
 Mr. Joseph J. Goleash, Jr. (2)
 Mr. Dean S. Hage (4)
 Mr. Warren R. Harden (4)
 Mr. Charles H. Hayes (2)
 Mr. & Mrs. Arlan F. Helgeson (4)
 Mr. & Mrs. G. Alan Hickrod (5)
 Mr. & Mrs. John S. Hill (5)
 Mr. James C. Hodge
 Mr. & Mrs. Ben C. Hubbard (5)
 Mr. & Mrs. Boyce Huson (5)
 Mr. & Mrs. Timothy R. Ives (5)
 Mr. & Mrs. Eugene H. Jabker (2)
 Mr. Thomas N. Jacob (2)
 Mr. & Mrs. Glenn Jacquat
 Mr. & Mrs. Robert Johnson (4)
 Mr. Bruce T. Kaiser
 Mr. & Mrs. Benjamin J. Keeley (3)
 Mr. Ignatius J. Keogh (5)
 Miss Betty J. Keough (4)
 Mr. & Mrs. Joseph M. Koziol (2)
 William J. Kritzmir
 Mr. & Mrs. Jesse Kuntzleman (4)
 Mr. & Mrs. Daniel A. Laesch (5)

Mr. & Mrs. Ronald L. Laymon (2)
 Mr. A. A. Leone (2)
 Miss Ruby Leslie (5)
 Dr. & Mrs. A. Edward Livingston (4)
 Dr. & Mrs. Ronald J. Long
 Mrs. Ruby S. Long (2)
 Mr. & Mrs. Normand Madore (2)
 Mr. & Mrs. Richard A. Manahan (4)
 Mr. & Mrs. Robert E. McAdam (5)
 Mr. & Mrs. John P. McCullough (5)
 Mr. & Mrs. William McKnight
 McLeary Servomation, Incorporated (4)
 Mr. & Mrs. E. Burton Mercier (4)
 Mr. Davis U. Merwin (5)
 Mrs. Odessa Meyer
 Mr. Fred Mills (5)
 Miss Cora Helen Morgan (5)
 Mr. & Mrs. Charles E. Morris (5)
 Miss Lorraine R. Muench (5)
 National Bank of Bloomington (4)
 Miss Velma Nelson (2)
 Mr. & Mrs. John Newbold
 Mr. & Mrs. Charlie S. Newton (3)
 Mr. & Mrs. Phares G. O'Daffer (5)
 Mr. Stanley R. Ommen (5)
 Mr. Alfred L. Palmer (5)
 Mr. & Mrs. Harold R. Phelps (5)
 Mr. K. E. Pickens (2)
 Mr. & Mrs. Michael J. Pisterzi (4)
 Mr. & Mrs. C. Ben Pitcher (3)
 Mr. & Mrs. Charles B. Porter (4)
 Mr. & Mrs. Samuel T. Price (4)
 Read's of Normal, Incorporated (5)
 Mr. & Mrs. E. A. Reitan (5)
 Rich Plumbing and Heating, Incorporated (4)
 Mr. & Mrs. R. Omar Rilett (3)
 Mr. & Mrs. Hal L. Riss, Jr. (5)
 Mr. William L. Sabine (5)
 Mr. & Mrs. Theodore Sands (2)
 Miss Phebe M. Scott (4)
 Mr. & Mrs. David L. Shrader
 Mr. & Mrs. Stanley B. Shuman (4)
 Dr. Arnold Slan (2)
 Dr. & Mrs. Herman Smith (5)
 Mrs. Hettie B. Smith (5)
 Mr. & Mrs. J. R. Steele
 Mr. Sam Stern (5)
 LTC Saralea Storts (4)
 The Don Templetons (4)
 Mr. & Mrs. Robert H. Thayer (4)
 Mr. & Mrs. Shailer Thomas (4)
 Mrs. Barbara S. Uehling
 The Lander Van Gundy Agency, Incorporated (5)
 Mr. & Mrs. Wilbur R. Venerable (2)
 Mrs. Raymond W. Wakeley (3)
 Mrs. Rose Walker
 Mr. Robert D. Weigel (5)
 Mr. & Mrs. Milton E. Weisbecker (3)
 Miss Natalie Wessels (5)
 Mr. & Mrs. George E. Wheeler
 Mr. & Mrs. Pete Whitmer (5)
 Mr. David T. Wiant
 Mr. & Mrs. Marvin G. Wiegand (3)
 Miss Shirley L. Winston
 Dr. Harvey S. Woods
 J. L. Wroan & Sons, Incorporated (5)
 Mr. Arthur Wyatt (2)

Friends of the Arts

The purpose of the "Friends of the Arts" is to ... encourage involvement of people in and outside the University in the fine arts at ISU.

... facilitate a broader, continuing interaction between the community and ISU fine arts programs.

... develop resources for the enhancement of the fine arts.

... provide the means to achieve an ever-growing margin of excellence in the fine arts for the mutual benefit of the University and the public.

For more information on the "Friends of the Arts," write the Development Office, Rambo House, ISU, Normal, Illinois 61761.

The following individuals have joined the "Friends of the Arts" or have restricted their Annual Fund gift to this endeavor:

Ms. Frances E. Anderson
 Mr. & Mrs. Harold Anderson
 Mrs. W. R. Annis
 Dr. & Mrs. J. Lewis Bailen
 Mr. & Mrs. Dwight A. Baker
 Mr. & Mrs. Robert Barnes
 Mr. & Mrs. Joseph N. Beadles
 Mrs. Carl Behr
 Mr. & Mrs. Eric Bickley
 Ms. Twila Bittner
 Miss Becky Ann Blaine
 Mr. & Mrs. Charles Blines
 Mrs. Linda J. Bogdan
 Dean & Mrs. Charles W. Bolen
 Miss Carol Borders
 Dr. & Mrs. Richard Browne
 Mr. Howard E. Burton
 Mr. & Mrs. Reno Caneva
 Mr. & Mrs. Kenneth D. Carpenter
 Dr. & Mrs. Theodore Century
 Mr. & Mrs. William F. Collins
 Mr. & Mrs. David Davis, Jr.
 Mr. & Mrs. Jack DeChamp
 Mr. Robert Dralle
 Mr. & Mrs. Martin J. Duffy
 Mr. & Mrs. William R. Dunbar
 Mr. Donald M. Freese
 Mr. & Mrs. Melvin G. Friedman
 Mr. & Mrs. Charles A. Funk
 Ms. Francine Gaudet
 Mr. & Mrs. Marvin Gesell
 Ms. Marilyn J. Geskey
 Miss Lisa Marie Gordon
 Mr. Melvin Grabowski

Mrs. Elizabeth Griffin
 Mr. & Mrs. Ellis Harter
 Reverend & Mrs. J. Hauser
 Mr. & Mrs. Richard J. Hentz
 Mr. & Mrs. Sam Holder
 Mr. & Mrs. Ben Hubbard
 Mr. & Mrs. Thomas N. Jacob
 Ms. Margaret Jones
 Mr. Bruce Kaiser
 Mr. & Mrs. James Kater
 Mr. & Mrs. Edward Kirkpatrick
 Mrs. Lynette A. Klein
 Mr. & Mrs. R. A. Koegler
 Mr. & Mrs. Donald E. LaCasse, Jr.
 Dr. & Mrs. Ralph Lane
 Dr. & Mrs. Richard Manahan
 Mr. & Mrs. Jim McKee
 Mr. Allan H. McKinley
 Mr. & Mrs. William McKnight, Jr.
 Mr. & Mrs. Roscoe McPherren
 Mr. & Mrs. F. C. Mecherle
 Mr. & Mrs. Davis U. Merwin
 Mr. George A. Meyers
 Mr. & Mrs. Keith Middleton
 Miss Carol A. Miller
 Mr. Wayne Milling
 Dr. & Mrs. Fred Mills
 Mr. & Mrs. Frank Mittelbush
 Mr. William W. Morgan
 Mr. & Mrs. Edward E. Murphy
 Mr. Albert V. Neeley
 Mr. & Mrs. Jack Ochiltree
 Mr. & Mrs. Merton Olson
 Mr. Stephen G. Pattengale

Mr. & Mrs. Sherman Peck
 Mr. & Mrs. David Phoenix
 Mr. Steven Porter
 Dr. & Mrs. Calvin Pritner
 Mr. Jon A. Rodger
 Mrs. Florence Fifer Rust
 Mr. & Mrs. Herbert Sanders
 Mr. & Mrs. William T. Schmid
 Ms. Ellen Schrader
 Mr. Dennis Schreck
 Mr. & Mrs. Arthur E. Schwartz
 Ms. Karen Shelly
 Mr. & Mrs. John F. Sicks
 Dr. & Mrs. Irwin Spector
 Dr. & Mrs. Clifford Sperry
 Miss Elizabeth Stein
 Mr. Daniel R. Stephens
 Mr. & Mrs. David Stern
 Mr. & Mrs. Randolph Stewart
 Mr. & Mrs. Jack Stoltz
 Dr. & Mrs. Gary Sudano
 Ms. Isabelle Terrill
 Mr. Wilson E. Thompson
 Mr. & Mrs. Irving Tick
 Mr. & Mrs. Glen S. Tillitt
 Mr. & Mrs. Daniel Usiak
 Mrs. Robert F. Vroman
 Dr. & Mrs. Donald Waincott
 Mr. & Mrs. Leslie H. Waverly
 Mr. & Mrs. Robert Williams
 Mrs. Lena Williamson
 Mr. & Mrs. Roy G. Wilken
 Mrs. Edward J. Zagorski

Honor Roll

Annual Fund

INDIANA

Mrs. Elizabeth M. Anderson
Mrs. Bertha Annis
Mr. Irvin T. Bailey
Mr. Davis L. Barker
Mr. Wilbur W. Barton
Mrs. Herschel T. Boren
Mrs. Harry Brocksieck
Eugene C. Brunner
Mr. & Mrs. Michael T. Cox
Mr. & Mrs. David E. Deeds
Mrs. Barbara F. Eleton
Janel Greer
Mr. Wilburn R. Harrell
Mr. Larry G. Herrman
Mrs. Helen Winslow Honan
Mr. Donald E. Hymer
Mrs. Bertha H. Jones
Dr. & Mrs. Philip R. Jones
Mrs. W. T. Joyce
Miss Ida B. King
Miss Helen E. Kirkland
Mr. & Mrs. Roland R. Kratzner
Mr. Paul B. Kulcsar
Marcia Main Lodge
Mrs. Dorothy Mighell
Mr. & Mrs. Roger Munson
Mr. & Mrs. R. Niendorf
Mrs. Michael O'Hallaran
Mr. & Mrs. John R. Perry
Mrs. Russell S. Perry
Mr. Virgil O. Petty
Miss Kathryn L. Richman
Mrs. Joseph D. Ruffolo
Mr. & Mrs. Glenn S. Seamark
Miss Susan M. Siegfried
Mr. Richard Simper
Mrs. Willard C. Smith
Miss Virginia Stoner
Miss Kathryn J. Turner
Mr. & Mrs. Ray Vanderspool
Mr. & Mrs. Ronald Vaselack
Mrs. June E. Walton
Mrs. Mary Anne Warner
Mr. Gregg E. Watson
Mrs. Allegra Williams
Mr. & Mrs. James Wilson

IOWA

Mr. Jessie Borgman
Mr. Yuk-Charn Chan
Miss Karen Sue Conzett
Mr. Richard L. Duncan
Mr. & Mrs. Thomas E. Fenton
Mr. Robert Frazier
Larry D. Gipple
Ms. A. Grace Hiler
Mr. Ben S. Hur
Mrs. James E. Grisolano
Dr. Marilyn J. Hoover
Dr. & Mrs. Keith Jepsen
Mrs. Bruce Johnson
Miss Freda Kelting
Mr. & Mrs. Russell Kingsley
Mr. Lary L. King
Mr. Robert R. Mumm
Mr. & Mrs. Joe L. Pfeiff
Miss Carrie P. Raich
Sister Mary St. Clara B V M.
Dr. Thomas Sweeney
Mr. & Mrs. Jerome H. Symons

KANSAS

Mr. & Mrs. Robert R. Kremer
Mrs. Franklin T. Van Petten

KENTUCKY

Mr. & Mrs. Michael Blaz
Mr. & Mrs. David Chase
Mrs. Orlen C. Dean
Mr. & Mrs. Dennis G. Haack
Mr. & Mrs. Arland H. Johannes
Mrs. Mary A. Mc Intyre
Mr. Joseph F. Mooney
Mrs. Edith C. Squier
Ms. Denise K. Vowell

LOUISIANA

Mr. & Mrs. William A. Craig
Mr. & Mrs. Larry J. Little
Mr. & Mrs. Greg Ulferts

MARYLAND

Mr. & Mrs. J. Keith Anderson
Mrs. Malcolm V. Burton
Mr. & Mrs. Charles D. Calhoon, Sr.
Mrs. Daniel Camp
Mrs. Norma Elaine Kruse
Ms. Kathleen M. Madigan
Dr. Omar D. Morgan
Mr. Joseph G. Ohler
Mr. & Mrs. Roland Perry
Mrs. Robert Price
Mr. & Mrs. Roger P. Quane
Mr. & Mrs. Walter Scott
Mr. Robert C. Walling

MASS.

Mr. William F. Omeara
Mrs. Elizabeth S. Payne
Ms. Barbara S. Pellerin

MICHIGAN

Mrs. Alvarita Allen
Mr. Kenneth R. Belton
Miss Lisa A. Burnson
Mr. & Mrs. George J. Charrette
Mr. & Mrs. R. B. Clapp
Mr. Frank J. Freiberg
Dr. Thomas E. Gatewood
Mrs. Harold Hadley
Dr. Alonzo Hannaford
Mr. & Mrs. Nathan Hawkins
Mr. Leslie W. Hewitt
Mr. & Mrs. Jeffrey S. Holden
Mrs. Ronneal Jenison
Dr. Waldo T. Johnson
Marie Sorensen Kjolhede
Mr. James Lepkowski
Mr. Robert H. Myers, Jr.
Miss Louise Parrish
Mrs. Maureen Pedersen
Mrs. Roger K. Peterson
Mr. Leslie B. Poland
Mr. & Mrs. David Schmid
Mrs. Marilyn Schuster
Miss Mary L. Smart
Mrs. Clarence Snodgrass
Mr. & Mrs. Terry Stombaugh
Mr. Loren F. Swearingen
Mr. Lee O. Yoder
Miss Renae A. Youngberg
Mr. & Mrs. William V. Wharton
Mr. & Mrs. Brace T. Wieland
Mr. Toivo B. Wiitanen

MINNESOTA

Mrs. Perry J. Chase
Mrs. Louise G. Forbes
Mr. Kenneth A. Johnson
Miss Nancy Kampmeier
Mrs. Helen Marston
Mrs. Myron Morgan
Ms. Shirley Sailors
Mr. Donald R. Stapleton, Jr.
Mr. Gordon D. Stewart
Mrs. Karlene D. Stinson
Mr. Larry D. Vail
Mr. Raymond E. Zaworski

MISSISSIPPI

Mrs. Tamara Craddock

MISSOURI

Ms. Nancy J. Ames
Miss Mary K. Asper
Mr. David B. Blount
Miss Diane Borcharding
Mr. Forrest L. Cockrell
Mr. & Mrs. Gary L. Coffman
Mrs. James F. Craddock
Mrs. J. M. Crain
Mr. Leslie J. Gowan
Mrs. Marie L. Herndon
Michael P. & Sharon J. McCuskey
Miss Bonnie L. Morrow
Mrs. Marcia K. Nodiff
Mr. David M. Read
Mr. Herbert B. Roberts
Mr. Aldo A. Sebben
Mrs. Charity Sherrington
Mr. & Mrs. A. L. Spain
Mrs. Arlene Spector
Mr. Sheldon L. Toepke
Mr. Franklin H. Van Dyke
Mrs. Curtis F. Wiggins

MONTANA

Dr. Guenter G. Schmalz

NEBRASKA

Mr. & Mrs. M. J. Belletete
Mr. James Danahay
Mrs. Gail Koziel
Mr. Harlan D. Mack
Mr. Robert E. Malone
Miss Doborah L. McMaster
Mr. W. Terry Workman

NEVADA

Ms. Veronica M. Bagnulo
Mr. & Mrs. Larry Davis
Mr. & Mrs. Charles R. Seipel

NEW JERSEY

Mr. Arthur Behrer
Mrs. Linda C. Brix
Dr. J. J. Chambliss
Union Camp Corporation
Miss Martha DeHaven
Mrs. Edward M. Kaftanic
Mr. Robert J. Messler
Mr. John Gilbert Paccagnini
Mr. & Mrs. Edward Pryzware
John Scholler
Dr. & Mrs. Dorian S. Smith
Mrs. Dolly Speropoulos
Mr. Roswell S. Valentine
Mr. & Mrs. Ugo Viggiano
Mr. & Mrs. Donald H. Widmayer

NEW MEXICO

Mrs. Beatrice B. Adkins
Mrs. Jone S. Burke
Ms. Laura Garihee
Ltc. Jane E. Gierhart
Mr. & Mrs. Robert A. Lebsack
Mr. Herbert Merville
Mr. & Mrs. James P. Schroeder
Mrs. John A. Zalaha

NEW YORK

Mr. Leroy Brendel
Dr. Elaine Budde
Chautauqua Institution
Mr. Anthony Dell'Isola
Mrs. Edwin H. Dipple
Ms. Wendy D. Downs
Lt. & Mrs. Kenneth D. Duhm
Mr. & Mrs. Henry G. Edwards
Ms. Jenness W. Eertmoed
General Electric Foundation
International Business Machines
Mr. James O. Irwin
Mr. & Mrs. Vernon Kaliher
Mr. & Mrs. Joseph A. Kinney
Ms. Denise A. Kohl
Mr. & Mrs. Jack P. Kolman
Mr. William Kornfeld
Dr. Violet H. Larney
Lever Brothers Company
Mr. & Mrs. James Linn
Mr. & Mrs. Paul McCarty
Mr. Dennis S. McClure
Dr. M. A. Meisinger
Mr. Lynn R. Nixon
Mr. Cornelius C. Olley
The Peat, Marwick, Mitchell Foundation
Mrs. Lester W. Peterson
Price Waterhouse Foundation
Mrs. J. Craig Roberts
Mrs. Bettie Stach
The Arthur Young Foundation

N. CAROLINA

Mrs. Mona Tobiss Bishop
Mrs. Garnet Greenwood
Mrs. Abel A. Hanson
Mrs. Charles R. Johnson
Mr. & Mrs. Michael J. Kazmier
Dr. Kenneth L. Knight
Mrs. Kay McCaffrey
Mr. & Mrs. Warren E. McKittrick
Mr. & Mrs. Robert H. Ray
R. J. Reynolds Industries, Inc.
Mr. Melvin S. White
Mr. Joe D. Wilson

N. DAKOTA

Mr. Earl W. Ackert
Mr. & Mrs. Douglas E. Slowiak

OHIO

Mrs. F. Eugene Ainsworth
Mrs. Peter Bard
Miss Anna S. Bruschi
Patricia Cannon

Mrs. William H. Clendenin
Mr. Marvin W. Cropsey
Mrs. Gail Baird Davidson
Mrs. Gary A. Fox
Mrs. Samuel M. Gillespie
Capt. Jon R. Johnson
Mrs. Robert H. Kerr
Mr. John R. Kies
Mr. Ronald D. Lee
Mr. David C. Lewis
Marathon Oil Foundation, Inc.
Mrs. Joanne McDonald
Mr. Homer L. Miller
Owens-Illinois
Dr. George A. Pownall
Mr. Henry F. Schneider
Mr. Larry L. Schwarberg
Mr. H. Clifford Scott
Mr. & Mrs. E. R. Sharpe
Mr. F. Leighton Smith
Mrs. Barbara L. Studer
Mr. Thomas H. Terwilliger
Mrs. Dale Weaver
Mr. Harold J. Weeks
Mrs. H. Ella McWherter

OKLAHOMA

Mrs. Ching Emma Chang
Dr. Barbara A. Nelson
Mrs. Madge Solomon
Mr. & Mrs. George B. Webb
Mrs. W. A. Willibrand

OREGON

Mr. James S. Kargol
Mr. Milton L. Pokarney
Dr. Theresa M. Ripley

PENNSYLVANIA

Dr. & Mrs. James Cole
Mr. Thomas J. Eddy
Mr. & Mrs. H. E. Griffin
Mr. Leland D. Halleck
Mr. & Mrs. Jack Hatcher
Dr. & Mrs. William L. Herman
Mr. Daniel C. Hilger
Mr. Ward C. Johnson
Mr. William J. Keefe
Mr. George Kuzo
Miss Margaret C. Laubner
Mrs. Romeyn Markland Lowther
Mrs. Annette Rutt Lynch
Mr. & Mrs. Edward Nels
Mrs. Viola O'Brian
Mrs. Barbara F. Richmond
Mr. Roy W. Robbins
Mr. Charles L. Roberts
Dr. Percival R. Roberts III
Miss Christine Schmidt
Mr. Darrell R. Schwab
Ms. Willetta Silva
Mr. & Mrs. Charles A. Wood

RHODE ISLAND WYOMING

Miss Janis H. Marecsak

S. CAROLINA

Mrs. Ronald Clauser
Dr. Lawrence Heavrin
Dr. & Mrs. Stephen L. Lemons
Dr. & Mrs. David H. Webster

S. DAKOTA

Lt. David P. Elbow
Mr. Harvey J. Wieland

TENNESSEE

Mrs. Kent Fearey
Mr. & Mrs. Dean A. Jones
Mr. & Mrs. Steve Trimmer

TEXAS

Mr. Langston F. Bate
Mrs. Samuel A. Blackburn
Dr. Max E. Chiddix
Mr. Michael Correll
Dr. Florence P. Davis
Mr. & Mrs. Robert A. Dierkes
Mr. Gene R. Kauth
Mr. & Mrs. James S. Simmons
Mr. & Mrs. James A. Sucher
Mrs. Lawrence Warren
Mrs. Alma Wilkison

UTAH

Mr. & Mrs. Ralph Barber
Mrs. Joe A. Novak

VIRGINIA

Miss Delores Y. Acosta
Mrs. Ruth P. Coyner
Dr. & Mrs. Robert Hecht
Mrs. Louise H. Israel (6)
Mr. & Mrs. Donald F. Jeanes
Capt. & Mrs. Robert Juarez, U.S.N.
Mr. Dennis A. McGuire
Mrs. Jean Hoffman Mehler
Mr. Larry P. Miller
Dr. Charles F. Pagels

WASHINGTON

Miss Gladys L. Gee
Mrs. Lee H. Hanson
Mr. & Mrs. Victor T. Henney
Ms. Bernadine Keirn
Mrs. Joan Lingenfelter
Mr. Chung Ching Liu
Mr. David G. Peck
Mr. & Mrs. Truman Sage

WASHINGTON, D.C.

Thomas P. Lake
Mrs. Linda K. Lellinger
Mr. & Mrs. James W. Price

WISCONSIN

Mr. & Mrs. Santos Andino
Mr. & Mrs. Alan L. Baker
Mr. David Beran
Dr. M. Corinne Clark
Mr. & Mrs. Richard C. Dunagan
Mr. Albert C. Elser II
Mrs. Deveen DeRocker Gingrich
Dr. Maurice O. Graff
Mr. & Mrs. John F. Hamilton
Ms. Marge Hintz
Miss Dorothy M. Jenson
Miss Helen J. Kenney
Mr. & Mrs. Nolan G. Kollath
Mrs. J. Christopher Knecht
Mrs. Marjorie Meixner
Mr. John C. Montgomery
Dr. & Mrs. Charles Morphew
Miss Ann S. Moskowitz
Mrs. Kathy Olson
Oscar Mayer Foundation, Inc.
Mr. & Mrs. Frank R. O'Rourke
Mr. Gary Piper
Mr. & Mrs. William R. Sarver
Mr. & Mrs. Tom A. Schirz
Mrs. Jan B. Smith
Mrs. Eleanor Stalder
Dr. Robert I. Steger
Dr. William Stimeling
Mr. & Mrs. William E. Von Rohr
Mr. Charles N. Waity
Miss Judith A. Williams
Mr. Duane A. Woltzen

WYOMING

Mrs. Theodore Kinsell, Jr.

CANADA

Dr. & Mrs. Richard C. Rounds
Hiram Walker-Gooderham & Worts Limited

GERMANY

Dr. Hermann A. Fink

GUAM

Mr. Lawrence B. Behrens
Miss Marie M. Reyes

HONG KONG

Miss Michelle Lau Suet Lan

ITALY

Mr. Gerald Dehaeseleer

JAPAN

Mr. & Mrs. Richard Lammers

WEST GERMANY

Miss Mary L. Halbreiter

Varsity Club

Warren Schmakiel, Director of Men's Intercollegiate Athletics, has enjoyed working with the Varsity Club, its officers, board of directors, and the total membership in his first year as athletic director at Illinois State University. Schmakiel is most appreciative of the interest and support of this group and the community in general.

If you are interested in Varsity Club membership, notify the Athletic Department or the Development Office. You may not be able to attend athletic events, but there is a \$25 membership fee which entitles you to receive invitations to special events and all mailings.

Varsity Club funds are used for recruiting (purchase of autos and auto expense for coaches use in recruitment) and general promotion of the athletic program.

Action Auto Glass
LeRoy, Illinois
Bill Adams
Andover Insurance Companies
James Reeder
Arends and Sons, Inc.
Armstrong Realty
Victor E. Armstrong, Sr.
Myron Auer
B & J Sales
Budweiser,
Busch,
Michelob
Bob & Jack Wombacher
B-N Credit Services
Bill Butler
Paul Nicholaides
The Bank of Illinois
Paul Bartlett
Discount Den
Mr. & Mrs. Thomas M. Barger III
Barker Oldstown
Barney's Caboose
Barney Wunderle
J. D. Barrett
Darrel R. Bayles
Harold L. Bean
The Beef Place
Mr. & Mrs. Gerald Harmon
Darrell Beernink
Bergeron Cadillac
Lonnie S. Bernstein
Atlas Window Cleaning
Willis Berry
Arch Bliss
Bloomington Federal Savings & Loan
Bloomington Offset
Bloomington Provision Company
Samuel E. Braden
Gordon Breen & Dick Breen
Schlitz & Stag Beer
Duane L. Bristow, Contractor
Brock Oil Company, Inc.
Dr. & Mrs. James G. Brown
Dr. & Mrs. W. R. Brunton
W. D. Bryan
Buckley Advertising Co., Inc.
Gene Budig
Builders Supply Company
John & Lucille Buscher
Buzz Capra
Capen Insurance Agency
M. Capodice & Son, Inc.
Fresh Fruit, Vegetables,
& Frozen Food

Clinker Classic
H. Lynn Coffman
Mr. & Mrs. Stanley Cole
Doug Collins
Conrad Sheet Metal Co.
James R. Courim
Gary A. Cross
Wendell R. Cross
Mr. & Mrs. C. R. Charlson
Chicago Bulls
Citizens Savings & Loan,
Normal, Illinois
Clark Aviation, Inc.
Clemens, Shepherd & Eckols, Inc.
Glen Cline
Noel Cullison
Northwestern Mutual Life Insurance
Len Curry & Son, Inc.
Mr. & Mrs. Roger Cushman
Ron Dale
Mr. & Mrs. D. H. Dalluge
Larry Danielson
Gil Deavers
Bob Denny
Ronald deVries
Ralph deWerff
State Farm Insurance
Mr. & Mrs. Leonard Dietz
Dodson Plumbing, Heating
& Air Conditioning, Inc.
Pontiac, Illinois
J. Richard Doud, M.D.
Mr. & Mrs. Fred L. Drewe
Don Drummond
Ed Ingold Realtor
Tom Eggers
Elwood & Marguerite Egelston
Electric Motor Repair Company
Mr. & Mrs. Preston Ensign
Farm Equipment Sales Company
George & Ann Farnsworth
Feeney Oil Company
Joe Finks
First National Bank of Normal
Kay Fisher
J. R. Flanigan
Robert T. Fleming
James T. Foley
Robert D. Forbes
Mr. & Mrs. Ken Franzen
Nita & Harold Frye
Eugene Funk III
Furlong Construction Company, Inc.
Ben. T. Gildersleeve

Mr. & Mrs. Arley F. Gillett
Wendell Good
Mr. & Mrs. Robert D. Grant,
Pekin, Illinois
Avonell Greeness
Jeanette & Jim Hallam
Howard J. Hancock
Dick & Nancy Hart
Havens & Snyder Insurance Agency
Chuck & Greg Heins
Massachusetts Mutual Life
Insurance Company
Mr. & Mrs. Tom Henneberry
Merlyn Hepperly
Walter Hencjar
Jerry Hillhouse
Tom Hillgoss
Mr. & Mrs. Louis F. Hirst '34
Holiday Inn
Donna Holloway
Dr. & Mrs. Warren A. Hoover
Hoppe Shoppe
Major General C. W. Hospelhorn
Ben C. Hubbard
Mr. & Mrs. Clark Hull
Norm & Connie Hultgren
Hundman Realty-Homes, Inc.
Mr. & Mrs. James E. Hurst
Mr. & Mrs. Boyce Huson
Huston's Apparel
Illinois Graphics, Inc.
Ed Ingold—Realtor
Thomas N. Jacob
Dr. & Mrs. Alvin R. Jacobson
Hal Jennings
Dr. Lowell M. Johnson
Richard D. Johnson
Mr. & Mrs. Gene Jontry
Ted Jordan
Don Karnes
Anna L. Keaton
Martha E. Keaton
Robert Kelly
Al Kemnitz
Mrs. Aura King
J. L. Kingston & Son,
Incorporated—Stan Hoselton
Robert E. Kiper, C.L.U.
Dr. & Mrs. Robert E. Knight
James V. Koch
Edd & Ginny Komm
Wendell & Barbara Kopp
Claude & Bonnie Kracik
Mr. & Mrs. Tom Krause
Dr. & Mrs. J. R. Krueger

Dr. & Mrs. G. J. Krueger
Laesch Dairy Barns
Dave Lapan
Mr. & Mrs. K. A. LaRochelle
Duane Lausterer
Mr. & Mrs. Loren Lay
Mr. & Mrs. Ronald Leighty
Dick Lenahan
Mr. & Mrs. Robert Lenz
Larry Lewis
Mr. & Mrs. A. E. Liberta
Mr. & Mrs. E. A. Lichty
Mr. & Mrs. John Liescheidt
Ed & Ann Lindsay
H. Dean Litt
Dr. & Mrs. Bruce W. Little
Lucca Grill, Baldini Brothers
Don Maaks—Wayne Meece
Johnson Transfer Company
Mr. & Mrs. Roland Macy
Mr. & Mrs. Richard Manahan
Mr. & Mrs. Robert E. McAdam
Mike & Sharon McCuskey
John McDermott
Dennis McDonald D.D.S.
Maruice S. & Marie McElhiney
Mr. & Mrs. William McKnight, Jr.
Wil & Lola McKnight
McLean County Bank
Chet Wilson
Eldon J. Mears
The Men
Lyneer Straub, Manager
Burt Mercier
K. D. Middleton, Associates, Inc.
Marshall Miller, Jr.
Fred Mills & Family
Jerome Mirza
Robert V. Mitchell
Henri Mohar
Arthur J. Montague
Moran Automotive, Inc. &
Moran's of Pontiac
Donald E. Monniger
Mr. & Mrs. Robert Monninger
Moore Business Forms
Bob Dowd
John L. Morel
Charles E. Morris
Mr. & Mrs. Ollie Myers
Joe Naffziger
John Naylor
Mr. & Mrs. Harold Neal
Dennis Nelson
George North
Mr. & Mrs. Jim Oberman
Jac & Carol Ochiltree
Thomas E. Ochs
Phares & Harriet O'Daffer
Odorizzi's Italian Food Shop
Ohlendorf Builders
Stan & Alice Ommen
Dewey O'Rourke
Warren & Barbara Perry
Mr. & Mrs. Roy E. Phelps
Philpott Mechanical Systems, Inc.
Wes Philpott
Mr. Joe Plack
Mr. & Mrs. Charles B. Porter
Peter & Ruth Pressman
Chuck Purdum,
NML Insurance Company
Mr. & Mrs. Dean Puyear
Robert Raber
Don & Carol Raycraft
Read's of Normal, Inc.
Dr. & Mrs. Robert M. Reardon
Rich Plumbing & Heating, Inc.

Hal Riss
Herb Roberts
Richard W. Roehenback
S & S Liquors,
703 North Clinton
Jim & Peg Schilkoski
St. Louis Football Cardinals
Warren Schmakiel
Mr. & Mrs. Gordon H. Schroeder
Dick Schultz
Herman Schultz
Mel Schultz
Mike Schultz
Lloyd W. Schwartz, Jr.
Insurance
Ed Schweinberg
Dr. & Mrs. D. L. Scott
Tom H. Scott
Duane Serck
McLean County Abstract Company
Shakey's Pizza Parlor
Bill Tuggle
Philip G. Shannabarger
Russell O. Shirk
Beer Nuts, Inc.
Mr. & Mrs. Richard A. Sieg
Arthur A. Sievers
Mr. & Mrs. Richard Simper
D. C. Sinclair
The Sinorak
Don & Mary Jo Reynolds
Mr. & Mrs. Virgil Smith
Dave Snyder
Eunice H. Speer
J. Russell Steele
Mr. & Mrs. Allen C. Stephens
Sam Stern
Don Stone Ford, Inc.
Gerald Strickland
Mr. & Mrs. Don Sutton
Mr. & Mrs. Kenneth R. Swanson
Richard "Dick" Tate
Dr. M. L. Taulbee
Dr. & Mrs. Thomas E. Theobald
Mr. & Mrs. Ed Thomas
Dr. & Mrs. Lowell M. Thompson
Roger D. Thompson
Morris Tick Company, Inc.
Mr. & Mrs. Kenneth Toepke
Union Roofing Company, Inc.
"Ted" Hoselton, Jr.
Ray Hoselton
The Van Gundy Agency
Claire Virgiel
WJBC - WBNQ Radio
Mr. & Mrs. Merton R. Walker
Mr. & Mrs. Murray Wallace
Terry Weber
Tom Weber
Mr. & Mrs. Milt Weisbecker
Mr. & Mrs. Rusty Wells
Central Supply Company
John C. White, Jr.
Mr. & Mrs. William White
Mr. & Mrs. Roy M. Whiteman
Pete Whitmer
Sherman Whitmer
Robert L. Wilson, Jr.
Mr. & Mrs. Emory E. Wiseman
Mrs. W. B. Witte
Donald W. Wood
Woodford County Bank
Wrench Printing
Mr. & Mrs. Ralph Wrench
Lloyd F. Wright
J. L. Wroan & Sons, Incorporated
Frank Yoggerst
Andy Young

Matching Gift Programs

Many companies in the United States participate in a Matching Gift program. An employe makes a gift to Illinois State University and the employer matches it.

Our first Annual Fund mailing for 1975-76 will include a brochure listing all matching gift companies. If your employer is listed, obtain a matching gift form (usually from the personnel office), complete appropriately and mail with your gift. We then verify your gift with the employer, who in turn sends us a check. In this way, employers encourage support of higher education. You may be able, in effect, to double your gift to the Illinois State University Foundation.

The following companies matched gifts of donors to the 1974-75 Annual Fund.

Abbott Laboratories
Aetna Life & Casulty
Arthur Anderson & Company
Atlantic Richfield Foundation
CNA Foundation
General Electric Foundation
The Gillette Company
Hughes Aircraft Company
Illinois Bell
International Business Machines Corp.
Lever Brothers Company

Marathon Oil Foundation, Inc.
Massachusetts Mutual Life Insurance Co.
The Northwestern Mutual Life Insurance Co.
Olin Corporation
Owens-Illinois, Inc.
The Peat, Marwick & Mitchell Foundation
Price Waterhouse Foundation
R. J. Reynolds Tobacco Company
Signode Foundation, Inc.
Union Camp Corporation
The Arthur Young Foundation

Gifts in Kind

Illinois State University receives a number of gifts each year that are classified as "Gifts in Kind." The gifts are received by the University through the Development Office. These gifts might be a piece of equipment for a department or an item for the museum area. The following individuals or businesses donated Gifts in Kind this past year:

Miss Elizabeth Abraham
Mr. Justin Alikonis
Gladys E. Baker (Estate)
Mr. Louis T. Boggs
Mr. James Carlon
Mr. Mark Carlon
Chrysler Corporation
Helen M. Churchill (Estate)
Caterpillar Tractor Company
Mr. Steve Dohrman
Black Friars
Graphic Arts Equipment Company
Dr. Edna Gueffroy
Mr. Preston Hawks
Mr. Clifford E. Horton
Illinois Graphics, Inc.
Mrs. Ernest Ives
Mr. David L. Kuntz
Mrs. Vernon Lindsey
Mrs. Julia McJunkin
Mrs. Allan H. McKinley

Mr. Tom McKinney
Mrs. Mildred McMullen
Mr. Eugene Mosbacher
Mr. Paul I. Murphy
Mr. Glenn Novakow
Phillips Brothers
Mrs. Donald Prather
Miss Ruth Richards
Mrs. Harold Seltzer
Dr. Jean Scharfenberg
Ms. Elsa E. Schilling
Mr. James Severthal
Mrs. Karen Shelly
Mrs. Jean I. Shepherd
Mrs. Oda Stewart
Ms. Blance Stutzman
Miss Ann Taylor
Miss Kathleen Thompson
Amy, Kay & Roy Youngs
Mr. & Mrs. Charles Wetter
Wrench Printing

University Living Memorial

The University Living Memorial is a program of the ISU Foundation which gives alumni and other friends of the University appropriate ways of remembering or honoring a loved one or friend—living or deceased. The funds are endowment funds and scholarships are given from

the income created by these gifts; thus, in reality, a "Living Memorial" is created to assist college students with their education.

You are encouraged to consider gifts in any amount to honor or remember relatives or friends. Families of deceased

loved ones may want to name or mention the University Living Memorial, ISU Foundation, Normal, Illinois 61761 as an appropriate way for friends to remember the deceased. Other options regarding the University Living Memorial program are as follows:

Memorial in Perpetuity

A Memorial in Perpetuity will be created for a gift of \$250 or more. The name of the deceased will be carried permanently and appropriately in all future Honor Rolls. The name is also added to the University Living Memorial plaque currently located in Hovey Hall (Administration Building) on campus.

Living Tribute

A Living Tribute is the way to honor a friend or loved one on a birthday, anniversary, graduation or a special occasion of achievement or affection. A gift of \$250 or more will sustain a tribute in perpetuity. A gift of \$5,000 or more will create a Living Tribute Named Scholarship.

Named Memorial Scholarship

A named Memorial Scholarship will be created for a gift of \$5,000 or more. The gift will be invested and the earned income used to award an annual scholarship to a deserving student in the name of the deceased or the one being honored. This name is also carried permanently in future Honor Rolls and added to the University Living Memorial plaque.

The following individuals have made gifts to the University Living Memorial during the 1974-75 year:

Alpha Beta Alpha
Mr. & Mrs. R. V. Auguston
Jared Berstein
Biology Publications Board
Miss Rebecca J. Brubaker
Mrs. Pauline G. Colwell
Estate of Allen D. Cowen
Mr. & Mrs. Michael T. Cox
Mrs. Gail Baird Davidson
Miss Maureen K. Deinert
Mr. & Mrs. Paul Dohrman
Richard Dix Edwards Trust
Mr. & Mrs. Reida Gardiner
Dr. & Mrs. C. L. Gardner
Mrs. Laura Garrett
Miriam Gray
Mr. & Mrs. Wadie Jwaidek
Margaret Kohn
Ruby Leslie
Mrs. M. M. Lindbeck
Mrs. M. Nuthins
Mrs. John B. Phillips
Mr. & Mrs. C. Ben Pitcher
Mr. Anthony Rake
Estate of Emma Reinhardt
Thomas N. Ricks
Mrs. Herman Stoltz
Mrs. Franklin T. Van Petten
Zonta Club of Kankakee

The individuals listed below have been so honored by the ISU Foundation receiving gifts in their memory or receiving gifts as a living tribute over the past year.

Mr. Ankenbrand
Janice Auguston
Mrs. Ada Barton
Dr. John B. Colwell
Mrs. Louise Delforge
Fazel Hassenpour
Dr. Leslie Holmes
Max Honn
Verda E. Kays
Lela Funk Rasmussen (Mrs. E. B.)
R. Omar Rilett
Herman Stoltz
Eunice Speer
Franklin T. VanPetten
Leo J. Winckler

The following list is the permanent listing of individuals in the University Living Memorial. This includes Memorials in Perpetuity, Named Scholarships, and Living Tributes.

Mary S. Arnold
Janice A. Auguston
O. Lillian Barton
Karl E. Bookwalter
Allen F. Cleland
Allen D. Cowen
Chris DeYoung
Alice L. Ebel
Dorothy Ecklemann
Richard Edwards
Harold Elliott
Raymond W. Fairchild
Mae Warren Feeney
Richard F. Feeney
David Flemley
Joseph Garner
David W. Gipson
John W. Green
Martha R. Gregory
Fazel Hassenpour
Mark E. Hattenhour
Emma Pellett Haynes
Stella V. Henderson
Glenn E. Hextell
Clifford E. Horton
Anna L. Keaton
Esther K. Kirchhoefer
Harrison O. Lathrop
Ralph H. Linkins
Miriam Floy Manchester
Mr. & Mrs. Orson L. Manchester
Katherine McGorray
Ayliffe H. Moore
Navy V-12
Mary, Etsuko Norris
Pi Gamma Mu
Marshall Dulaney Pitcher
Laura H. Pricer
Jessie E. Rambo
Emma Reinhardt
R. Omar Rilett
Helen K. Ryan
Eunice H. Speer
Elizabeth Stein
Lewis R. Toll
Garret A. Van Ausdall
Lewis M. Walker
Arthur W. Watterson

The following named scholarships were established during the 1974-75 academic year:

The Doris—Glenn Hextell Memorial Scholarship

The Illinois State University Foundation received funds from the Estate of Doris J. Hextell for a scholarship to be awarded to a student in Agriculture. During Mrs. Hextell's life time, she gave funds for a number of years for a scholarship in the name of her husband, Glenn Hextell, previously deceased. Mr. Hextell graduated from Illinois State University in 1951 with a major in Agriculture.

The Department of Agriculture will make the award in cooperation with the Financial Aid Office of Illinois State University.

The R. Omar Rilett Trust for Scholarships and Research in the Biological Sciences

The Biology Department established this trust with funds received by their Biology Publications Board over the years and also from private donations. The purpose of the fund is to honor R. Omar Rilett for his sixteen years of dedication of service to Illinois State University and the Biology Department. Dr. Rilett was Department Chairman for fifteen years and was honored by being named a University Professor this past year. He has announced his retirement.

Senior students at Illinois State University who have been accepted by the Graduate School in the graduate program of Biological Sciences, and graduate students in the Department will be eligible to receive awards from the R. Omar Rilett Trust for Scholarships and Research in the Biological Sciences. Income from the trust will be used to make the awards. This name is also carried permanently in future Honor Rolls and added to the University Living Memorial plaque. Individuals may give a scholarship in their own name as a tribute to ISU and worthy students.

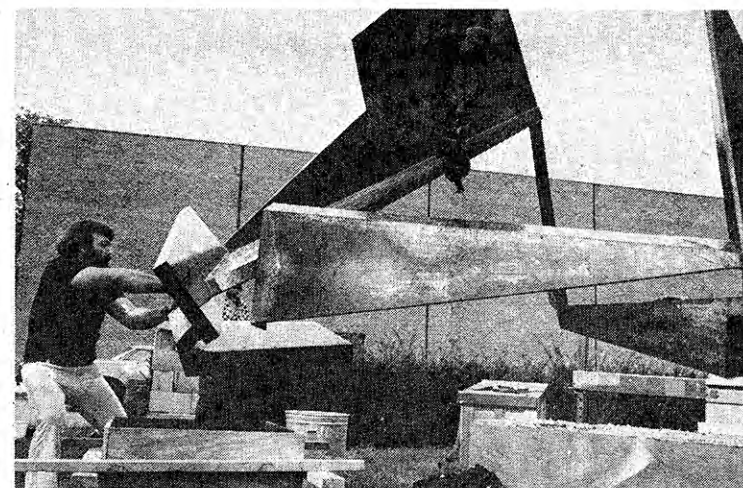
Other Gifts

"Other Gifts" include gifts to the Illinois State University Foundation that do not fit into any other category and are listed as "other" in the gift report. A large percentage of the donors listed below made gifts restricted to the Madrigal Singers; however gifts in this category were also used for other purposes as directed by individual donors.

The following individuals or businesses donated "other gifts" this past year:

Active Art Association
Dorothy Aldrich
Mr. & Mrs. David Ashbrook
Bank of Carlock
Ruth Basting
Mr. & Mrs. Phillip Baumgart
Mr. William A. Beich
Mr. & Mrs. Douglas R. Bey
Mr. & Mrs. Roland Block
Dr. & Mrs. Robert G. Bone
Dr. Robert N. Brooks
Mr. & Mrs. William D. Bryan
Dr. & Mrs. Gene A. Budig
Camera Craft Studio
Dr. & Mrs. Theodore H. Century
The Co-op Bookstore
Mr. Rogue Codero
Miss Helen Chiles
Mr. Arthur E. Colvin
J. C. Ebach Realty
First National Bank of Normal
Robert T. Fleming
Mrs. Flora H. Foltz
Mr. Charles E. Foster
Mrs. Ward Freitag
L. F. Funk
Ms. Marilynn J. Gesky
Goldbert, Geiser, Marder & Egert
Mr. & Mrs. Art Gramm
Mr. & Mrs. Ed Gramm
Mr. & Mrs. R. H. Guthoff
Dr. Dean S. Hage
Mr. & Mrs. Donald S. Hartman
Mrs. Clara J. Harweger
Mr. Robert G. Hathway
Dr. William P. Henderson
Mr. & Mrs. Wayne C. Hess
Mr. Roger M. Holmes
Mr. & Mrs. Anthony Holloway
Illinois CPA Society
Mr. Bruce T. Kaiser
Miss Anna L. Keaton
Mr. & Mrs. Robert L. Kendrick
Robert E. Knight, M.D.
Mr. Daniel Laesch
Mr. Richard Lenahan
Lorraine R. Larson

Mr. & Mrs. J. L. Long
Lybrand Foundation
Mr. Glenn Maxwell
Robert E. McKnight, M.D.
Mr. & Mrs. G. Robert Mercherle
Ms. Nancy S. Merwin
Mr. & Mrs. Paul L. Mitzner
Mr. & Mrs. Eugene G. Mosbacher
Murphy, Jenne & Jones
The Music Shop of Normal
Mr. William Pearlberg
The Peat, Marwick, Mitchell Foundation
Mr. & Mrs. Lawrence Pennie
Dr. Harold R. Phelps
Price Waterhouse & Company
Rada's Hardware
Readi-Wood, Incorporated
Hal Riss Real Estate
Dr. Evelyn Rex
Mr. & Mrs. Stanley Rives
Mr. Tom Ruud
Dr. Cecilia L. Ryan
Miss Stella Sancken
Mr. & Mrs. Russell Satterfield
Mr. & Mrs. Melvin Schultz
Central Illinois Harvistore
Mr. & Mrs. Winston G. Seevell
Mr. James A. Shirk
Mr. J. E. Smithson
Miss Judy Smithson
Society of Plastics Engineers
Mr. & Mrs. Clifford Stark
Mr. & Mrs. Cliff E. Steinkraus
Mr. Daniel R. Stephens
Mr. & Mrs. Robert C. Stites
Mr. & Mrs. George Stoller
Mr. & Mrs. Don F. Templeton
Mr. & Mrs. Gail L. Tuttle
Mrs. Charlotte J. Vargo
Mr. John Walker
Mr. Bernard E. Wall
Mr. & Mrs. Robert D. Webb
Rev. & Mrs. Gordon B. White
Janette S. Whitman
Mr. Donald H. Willard
Thomas W. Wood
Mr. & Mrs. Sam Wylie



Artist Issac Witkin, Bennington, Vt., supervises the placement of "Alnasco" in front of the University Union in August. The modern steel sculpture was purchased for the University by the Alumni Association from funds in an investment account that had accumulated from alumni dues in the past.

Do you have a will?

DO YOU HAVE A WILL? If your answer is no, may we respectfully suggest that you make a will in consultation with your attorney so as to insure the orderly distribution of your estate in accordance with your desires. May we further suggest that you give consideration to a bequest to Illinois State University Foundation.

A bequest to the Illinois State University Foundation can have significant estate tax advantages for the donor as well as providing a means whereby the contributor can assist the University in a far more substantial manner than would perhaps be the case during his or her lifetime.

Should you or your attorney wish ISU Foundation bequest information or other assistance, please write or call:

Illinois State University Foundation
Illinois State University
Normal, Illinois 61761
309/438-2577

Friends of Milner Library

The Friends of Milner Library meet twice a year and have a common interest in the Library. There is a speaker and a display from the rare books collection.

The people listed below have participated in the voluntary dues program or have restricted their Annual Fund gift to Milner Library.

Funds received by the Friends of Milner Library are used in the Special Collections area to purchase rare books. The participants in this program are as follows:

Mrs. Laura L. Addison
Miss Hazelle M. Anderson
Mr. & Mrs. P. D. Ambardekar
Miss Mary K. Asper
Mrs. Barbara T. Barclay
Mrs. Royal J. Bartrum
Mr. Jonathan J. Beauchamp
Mr. & Mrs. Francis B. Belshe
Miss Marsha L. Beyer
Mrs. W. A. L. Beyer
Mr. & Mrs. Kip Bishop
Miss Joyce Blumenshine
Mr. & Mrs. J. Thomas Bonnell, Jr.
Mr. Wayne Borchelt
Mr. & Mrs. Samuel E. Braden
Miss Maureen E. Brady
Mr. & Mrs. Leroy F. Brandt
Ms. Ruth Braun
Miss Ollie Brewer
Miss Susan J. Campbell
Patricia Cannon
Mr. & Mrs. Carl Carli
Dr. J. J. Chambliss
Dr. & Mrs. James Cole
Mr. & Mrs. David C. Cooney
Miss Lynn J. Cooper
Mrs. James F. Craddock
Mrs. Karen M. Crisler

Mrs. Helen C. Curtis
Mr. & Mrs. Ron L. Curtis
Data Processing Management
Association
Miss Nettie B. Davenport
Ms. Shirley Davis
Ms. Marilyn Dessecker
Mr. & Mrs. Robert A. Dierkes
Mrs. Kathleen M. Durham
Mr. & Mrs. William W. Easton
Mr. & Mrs. Elwood Egelston
Mr. & Mrs. E. Duane Elbert
Miss Margery A. Ellis
Mr. & Mrs. Ralph N. Ewing
Ms. Dorothy S. Fagerburg
Mr. & Mrs. V. L. Fairfield
Mr. & Mrs. Ronald H. Koehn
Mr. & Mrs. Arthur H. Larsen
Dean & Christine Lawrence
Mr. & Mrs. William Legge
Mr. Frank D. Lumley
Mrs. Michael J. Luthie
Mr. & Mrs. Terry A. Maggart
Mrs. Elisabeth C. Manahan
Mr. William R. Martens
Miss Eleanor F. Matthews
Mr. & Mrs. Royce Maxwell

Mr. & Mrs. Edmund E. McCarthy
Mr. & Mrs. William McKnight, Jr.
Miss Deborah L. McMaster
Mrs. Jean Hoffman Mehler
Mrs. Nick S. Mihelsic
Mrs. Dorothy Mighell
Mr. & Mrs. George C. Miller
Mr. & Mrs. Mark R. Moran
Mr. Cornelius C. Olley
Miss Jerilyn K. Oltman
Mr. Raymond G. Otto
Mr. Terry E. Pau
Mrs. Marian Pospisil
Mr. W. E. Powers
Mr. Robert S. Price
Mrs. Douglas W. Reynolds
Miss Beverly S. Rich
Miss Mary A. Richmond
Mr. & Mrs. Stanley G. Rives
Miss Catherine A. Russell
Mr. & Mrs. John R. Ryan
Mr. Harold K. Sage
Mr. Tom Sato
Mr. & Mrs. James E. Schlatter
Mr. & Mrs. Kenneth L. Schobert
Mrs. Anson W. Schulz
Miss Grace Shea
Mr. & Mrs. Mark A. Sherman

Mr. Jon Lamar Simpkins
Mr. & Mrs. Craig A. Simundza
Mrs. Dorothea Smith
Mr. F. Leighton Smith
Mrs. Orrin R. Smith
Mrs. Clarence Snodgrass
Mr. & Mrs. Robert Sokan
Mrs. Ruth Sollberger
Miss Eunice H. Speer
Mr. & Mrs. Lars Steffenburg
Dr. & Mrs. Clifford A. Sperry
Miss Marsha Stewart
Dr. William Stimeling
Mr. & Mrs. Richard F. Stockton
Mr. & Mrs. Ronald E. Stone
Mr. Ralph A. Storrs
Mrs. Lyle Straight
Mr. & Mrs. Ron Stroud
Miss Ruth Stroud
Mrs. Barbara L. Studer
Mr. & Mrs. Alan Skwarcynski
Mrs. Hazel B. Swan
Mr. Ronald Tallon
Mr. & Mrs. M. R. Telford
Judge & Mrs. Wayne C. Townley, Jr.
Mr. Harold H. Tsukuno
Miss Kathryn J. Turner
Miss Barbara S. Uehling
Mr. & Mrs. Greg Ulferts
Mrs. Willa L. Ummel
Mr. & Mrs. Eric L. Van Fleet
Mr. Robert S. Vostal/
Mrs. Judith M. Vostal
Mr. & Mrs. Francis M. Wade
Mr. Robert D. Weigel
Miss Eleanor W. Welch
Miss Harriet R. Wheeler
Mr. & Mrs. Sherman Whitmer
Mr. & Mrs. Wesley C. Wilcox
Mr. & Mrs. Edwin R. Willis
Mr. & Mrs. Orval J. Yarger
Mr. & Mrs. Edward Zajic

Mrs. Roseann W. Fisher
Mr. & Mrs. Eugene L. Fogleman
Mrs. Dewey Fristoe
Mrs. Charles A. Funk
Mr. & Mrs. Albert L. Garber
Mrs. Malinda D. Garton
Mr. & Mrs. Harold E. Gibson
Mr. Leo Giglio
Mr. & Mrs. H. Robert Goldsmith
Mrs. John A. Gorman
Mrs. Albert L. Gratton
Mr. & Mrs. Thomas F. Greuling
Mr. & Mrs. Melvin R. Gurgej
Mr. Howard J. Hancock
Mr. & Mrs. Karl E. Hanson
Mr. J. E. Heaberlin
Candace and Arlan Helgeson
Mr. & Mrs. Dennis W. Henrichs
Mrs. Leo Henry
Mr. & Mrs. Dean F. Hilfinger
Mrs. Stephen D. Hillen
Mr. & Mrs. T. C. Hollingsworth
F. Lincoln Holmes
Mr. & Mrs. Samuel Hutter
Mr. Francis H. Irvin
Mr. & Mrs. Bryant H. Jackson
Mr. & Mrs. J. M. Jackson
Mr. & Mrs. Eric L. Jacobsen
Mr. & Mrs. William M. Jirkovsky
Ms. Diane Just
Mr. & Mrs. John Hellwig
Mrs. Valorie M. Kaffka
Miss Karen Kaiser
Mrs. Thomas E. Kavanaugh
Miss Martha E. Keaton
Mr. & Mrs. Benjamin J. Keeley
Mr. Eugene L. Keller
Mr. Ignatius J. Keogh
Mrs. Dorothy G. Kinscherf
Miss Anna L. Kraft
Mr. Joseph Kraus
Miss Ruth Lois Karloski

Projects to be funded by ISU Foundation

1. Exploration Journal \$270

Scholarly publication devoted to the study of exploration and travel in literature.

2. Recognition Tea \$400

The Office of Clinical Experiences in Teacher Education, in cooperation with the departments of the College of Education, will sponsor a tea for classroom teachers in the Bloomington-Normal area where ISU students are placed for pre-student teaching experiences.

3. Tutorial Program \$1,200

Support for the established Tutorial Project in which Illinois State University students provide tutoring for students in a variety of community settings—public schools and several service agencies. These funds help offset the necessary expenses, particularly transportation of students to participate in the program, incurred by the program. Actual student tutoring is a voluntary contribution by ISU students.

4. Faculty-Student Program \$150

The purpose of the program is to bring faculty and students together in an informal setting. This is done through a foreign language table program where meals are purchased and also meals for faculty in residence personnel while hosting colleagues at residence hall programming events.

5. Alumni High School Teacher Program \$2,500

Research grants made to alumni teaching in high schools whose research proposals were approved in the Office of Research Services and Grants.

6. Bone Scholar Awards \$1,200

Up to 12 awards of \$100 each to undergraduate students identified as Bone Scholars, in honor of former President Robert G. Bone. The awards have been based on outstanding academic records and on records of service to the University. A careful screening process precedes the selection.

7. Foundation Alumni Distinguished Scholarship Program and Foundation Merit Scholarship Program \$57,000

This program encourages top scholars to attend ISU. Four freshmen receive \$4,000 (\$1,000 a year) and 18 community college transfers receive \$1,000 (\$500 a year). The merit scholarship program is based on need.

8. Civil Service Scholarships \$1,000

Funds are made available to the ISU Civil Service Council to award scholarships to members of civil service families.

9. Civil Service Employee Merit Awards \$1,000

Distinguished awards made to civil service staff members of the University. These are designed to communicate that meritorious contributions by staff are important to the University. The recipients are identified through an appropriate process developed by the University Civil Service Council.

10. Friends of the Arts \$250

Funds allocated to this interested group as seed money to strengthen this program which is now one year old. No request will be made for funds next year as the program can sustain itself with its own membership and other restricted funds given by donors.

11. Development Office \$3,600

To purchase plaques and for personal contact solicitation.

12. Alumni Services Office \$10,000

For travel, awards program, alumni board travel, and other alumni programs.

13. Chemistry Career Days \$400

A day in which information is disseminated on careers in chemistry. This is a "goodwill" vehicle as well as being helpful to recruitment of students.

14. Publication \$1,200

The History Department felt that a monograph on local history by an emerita faculty member should be published. Assurances were given that the publication would be used by students and other interested parties, and would be of value.

15. High School Math Contest \$355

The Math Department holds mathematic competition among high school students in written and oral competition (students within a 50-60 mile radius would be invited). This is a positive recruitment program for top students in math.

16. Agriculture Day \$130

High School and Community College students invited to campus to tour facilities and learn about agricultural programs at ISU. This serves as a positive recruiting device.

17. Postage \$4,000

Partial payment to the University for mailing costs of Alumni and Development Offices.

TOTAL \$84,655

TV credit course

College credit for sitting at home in front of the TV set?

Yes—if the set's tuned to "Classic Theatre—the Humanities in Drama," a television series of 13 stunning plays by the likes of Shakespeare, Voltaire, Ibsen and Shaw.

The series—or the first class—begins with "Macbeth" Sept. 25 at 7:30 p.m. on WTVP, Ch. 47, Peoria's public broadcast station, and will "meet" each Thursday night at the same time for the next 12 weeks.

ISU's telecourse instructor will be Robert W. Funk, assistant professor of English and a Shakespeare scholar.

Persons who wish to register for the course should call or write the Division of Continuing Education at ISU. Registration should be completed by Sept. 25.

'today's students are sincere'

Bone looks at change on the campus

Editors Note: Alumni News offers this in-depth look at changes, problems and directions at ISU and other universities during the past six years by Dr. Robert G. Bone, ISU president from 1956 to 1967, and accomplished historian known and respected by thousands of ISU alumni.

When I was asked to write about today's university as I see it, I declined because I believe that one must be an active part of the university to intelligently describe and discuss it. I have not been an active part of this university for eight years. However, your editor persisted and reminded me that I had worked with a number of struggling private colleges for two years as a consultant for the Ford Foundation and then taught history in a college for two years—he persuaded me to talk on today's college student. A number of people, including quite a few of you ISU alumni, have asked my opinion of the college student today.

During the past six years many adults have become distressed as to what they read or hear about the college rebels, the undisciplined and the irresponsible college youth. As you know, it is usually the irresponsible riotous action which appears in the headlines. This picture, while true, refers to only about one per cent of college students. Yet, at the same time, it must be emphasized that this riotous action is symptomatic of an overall restlessness and concern among young people today. Ours is an age of conflict and restlessness, and our hope for the future is a restless, questioning, responsible, educated youth. Let us realize that there are relatively few irresponsible activists bent on hedonistic rebellion without social responsibility. The great majority of the youth are serious. They want to do something meaningful. They are inclined to be socially and environmentally minded. They are interested in trying to correct social ills and injustice. They are more interested in finding a job in which they find satisfaction rather than merely the money it pays.

In recent years I have thought of the 1950s—a decade of satisfaction and complacency. College teachers and administrators decried what they felt was student apathy. Most of the enrollees at Illinois State Normal University were good students. They made good grades; they wrote satisfactory papers; many became excellent teachers. Yet, in educational conferences and meetings, a great deal of discussion centered around ways in which we could encourage greater discussion among students. We encouraged them to raise questions in all fields. By the mid-60s, many young people were questioning their teachers, administrators and even businessmen. Many of the questions were the result of careful thought and study. They wondered if some traditions weren't "sacred cows" and therefore superfluous; they questioned the logic of policies established many decades earlier. Some of us were delighted with this inquisitive generation; some were startled and some were indignant.

However, by 1968 some of the questioning and some of the discussions got out of hand. Very likely by the year 2000 social historians will have the perspective to explain the reasons for the riots and rebellion on college campuses. Among the reasons, they will undoubtedly include the fact that the questioning, demanding student was bringing about change—some needed change—and a

few individuals decided to press for their "pet gripes." There were a few irresponsible young people who sought leadership positions, but who had heretofore been unsuccessful in being recognized as leaders. They became demagogues, stirring up emotions and hatreds. They promised others a Utopia if they joined forces to overthrow the establishment. They talked of democracy, or the right to speak out, of tolerance and understanding. Yet they were a minority. They refused their opposition a right to be heard; and they were abusive to, and intolerant of, others. They saw and obtained publicity by rash statements, by sit-ins, by abusive shouting, and even by destruction of property. Interestingly, a good many of the leaders were not enrolled in college at the time and were often disgruntled drop-outs; and, I should add, a few leaders were dedicated and sincere, but were misled by others, were immature and impatient, or became so impractical that they hurt their causes. There were many actions and policies of the mid-60s which added to the restlessness of the questioning generation—chiefly, the Vietnam situation, the draft, and other associated causes.

I need not repeat reports of many of the tragic events, which occurred on campus after campus, reaching its peak in 1968-71: buildings damaged, furniture destroyed, records burned, and even library file cards thrown about and torn up. As often happens in riot and revolution, the publicity sought by irresponsible leaders or by mob action is achieved, but in most cases a reaction sets in which results in the loss of some gains which were probably valuable. There are still occasional outbreaks and problems on campus, but in most such cases the administration tries to meet the faculty and students to discuss, study, and resolve the difficulty. Illinois State University has been doing this for a number of years. In fact, even during 1968-71 ISU never recessed school or dismissed classes—a situation which did occur at many colleges and universities.

I return to the questions often asked me by many alumni, "Aren't the students today awful?" "Can the university survive such riotous action?" I find answers to those questions easy. Students today are above average and, on the whole, conscientious and sincere. The university has survived. It has learned from its past experiences and is seeking solutions to the many problems it faces.



Robert G. Bone with Helen Marshall, professor of history emerita and author of the ISU Centennial History published in 1956.

One of the ways in which the alumni can help is to recognize that the riotous student, the destructive student, the student "on drugs" is a very small per cent of the student body. You may ask why does the university not dismiss problem students? An answer is that in a number of institutions where dismissed students have sued for readmission, the courts ordered the college to reinstate the student unless a serious civil law was broken and the student was found guilty by the court. The university and the president are confronted with many problems, not only with students and faculty with strong and diverse ideas, aims and opinions, but serious budget problems, a great increase in costs, a need to answer many policy questions, many curricular questions, graduation requirements, the campus social code, and major goals and purposes.

Illinois State University has long been a teacher education institution with a liberal arts and science emphasis, and from President Budig's speeches it would seem that such is still the university's emphasis. President Budig needs your support and understanding as he and his staff through numerous faculty-student committees, seek answers to numerous problems and the best education for our students.

One of our graduates, Dr. K. Patricia Cross, president-elect of the American Association for Higher Education, recently read a provocative paper entitled, "New Students in a New World." It begins with "Higher education faces a profound crisis of purpose." She is right and most universities in light of the recent difficulties, of the tightening budgets, of a critical public, are diligently studying their function and purpose in light of present needs and the purposes of community and junior colleges, professional and technical schools, vocational schools and undergraduate and graduate schools. Dr. Cross points out the different philosophies and goals which institutions of higher education must consider today as faculty, students, and administrators share in rethinking educational programs for the future. Many experienced and knowledgeable people disagree on the wisest goals for the many facets and divisions of education beyond the high school. Many of us have strong opinions as to the policies and goals which our university should adopt. I am confident that Dr. Budig has the experience, the ability, and the knowledge, so that along with his staff and faculty, Illinois State University will continue to have a fine educational program.

College students today are far better educated than those of my generation. They come to the campus with more knowledge and greater sophistication than freshmen of previous decades. They are serious-minded and concerned about social injustice and society's needs. They question the hypocrisy they see in some adults, some businesses, and some politicians. They are worried about the cost of living, unemployment, and inequality. Few of them are rebellious. Yet, today they have certain power and they are aware of it. In an article entitled, "Today's Youth to Pace Tomorrow's Decisions," Dr. Arlan Helgeson, former Dean of the University, wrote, "One striking development in the last 25 years has been the growth of the political and numerical power of youth. I say political and numerical power because it is the sheer number of young people that has affected

Join Us!

The Illinois State University Alumni Association's Christmas Tour To

SANTO DOMINGO IN THE DOMINICAN REPUBLIC

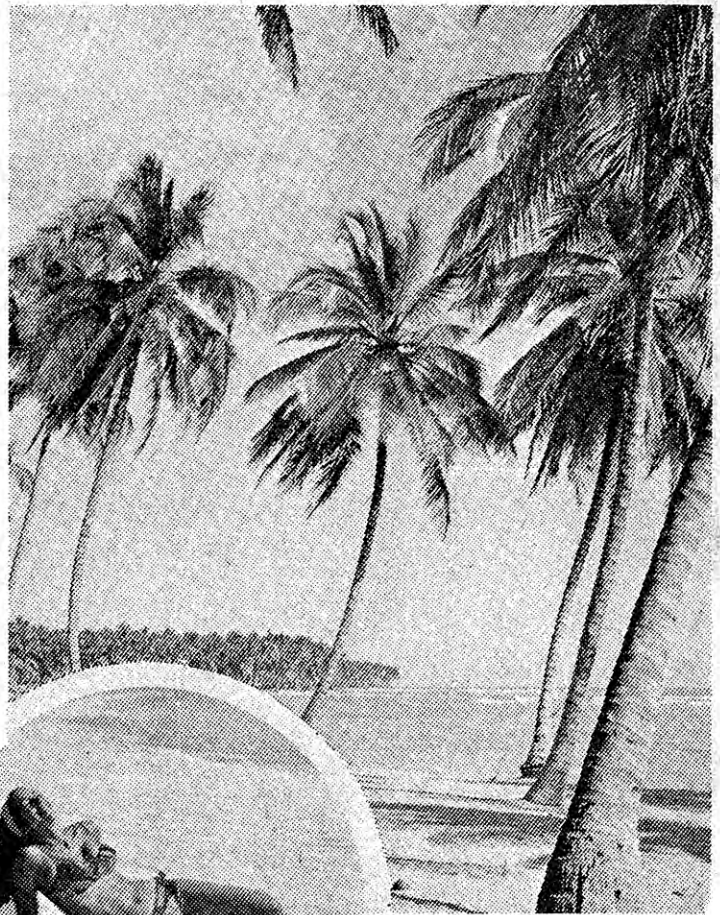
"The Friendly Isle"

Tour Includes:

- Roundtrip jet transportation from Chicago via a Capitol Airways DC-8, 183 pax aircraft.
- Complimentary meals and beverages served aloft.
- Seven nights deluxe accommodations at the Embajador Intercontinental Hotel.
- Roundtrip transfers from airport to hotel and return, including portorage of luggage.
- All hotel taxes included
- Welcome cocktail party
- Many exciting optional tours.
- No regimentation — You are free to do as you please.
- Pre-registration of rooms . . . hospitality desk . . . special bag tags.

Not included are:

- Santo Domingo Tourist Entry Card (\$2.00 per person)
- Santo Domingo Departure Tax (\$3.00 per person)



**Registration Closes
September 25, 1975**

\$339.00 PER PERSON
DOUBLE OCCUPANCY

**DECEMBER 26, 1975
thru JANUARY 2, 1976**

**Reservations will be accepted on a first come,
first served basis.**

NOTE . . .

This tour is limited to members of the ISU Alumni Association who have been members in good standing prior to June 26, 1975; and members of their immediate family.

Pro-rated air cost is \$153.00 based on full utilization of Capitol Airway's 183 passenger DC-8 jet. The final air cost is subject to the final load factor and to possible fuel price adjustments. Land cost is \$186.00 per person.

Your deposit is refundable until 60 days prior to departure. Your final payment is due 60 days prior to departure. If you cancel after 60 days prior to departure, you will be subject to a charge equal to the air price. If a replacement is found, you will receive a full refund, less \$25.00 handling fee.

Mail Reservation To:
Illinois State University Alumni Office
Normal, Illinois 61761
Phone: (309) 438-2294

SANTO DOMINGO — ISU Alumni Tour

Name _____

Address _____

City _____ State _____ Zip _____

Phone _____ Class Year _____

Please enclose \$100.00 deposit per person with application.

Final payment due October 31, 1975.

Make checks payable to World Wide Travel.

Single occupancy add \$50.