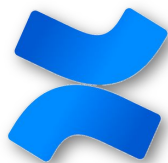
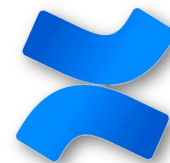




# Atlassian Confluence as an ELN and shared resource system



21.09.2021



Ilja Bezrukov

Rebecca Schwab

Max Planck Institute for Developmental Biology  
Tübingen

# MPI for (Developmental) Biology



- (3) 5 Departments (director + 2-5 groups)
- (4) 7 research groups,
- (3) 7 core facilities
- Administration



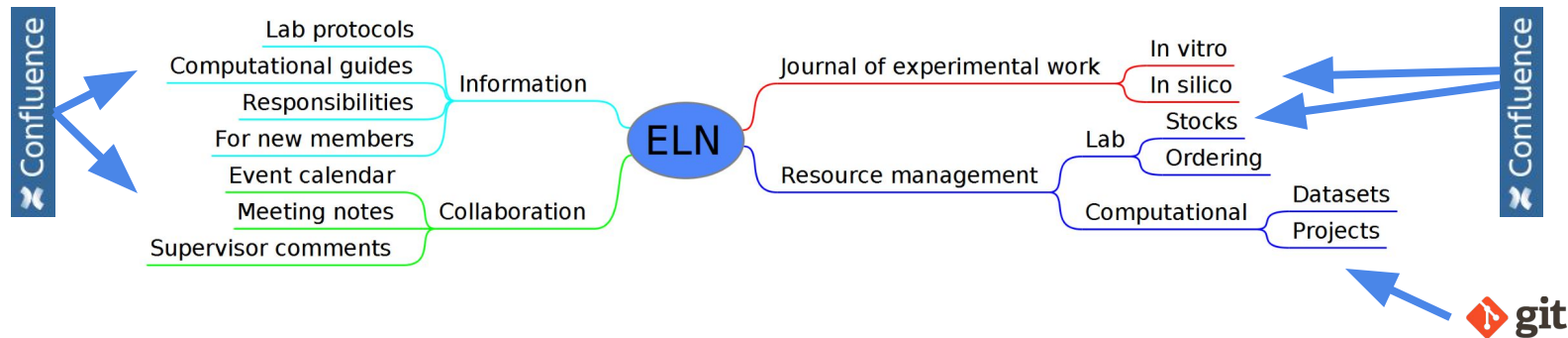
**Wet lab biology**  
(structural biology,  
molecular biology,  
genomics)

+

**Computational  
biology**

**Confluence** (start: 2015)

# ELN: how much flexibility is needed?

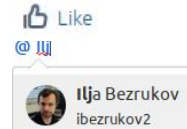


- Flexible vs pre-defined structure
- How flexible does an ELN need to be?
- Balance computational focus with classical lab work
- One system for everything vs specialized tools

# What is Confluence?



- Advertised as an **enterprise collaboration system**
  - Strong **wiki** functionality
  - Collaborative features (@tags, sharing, likes, commenting)
- Large **plug-in** ecosystem
- Can be run **on-premises** or as **cloud** instance
- **Proprietary**, with access to source code available
- Currently very **generous licensing** to non-profit organizations



# Licensing

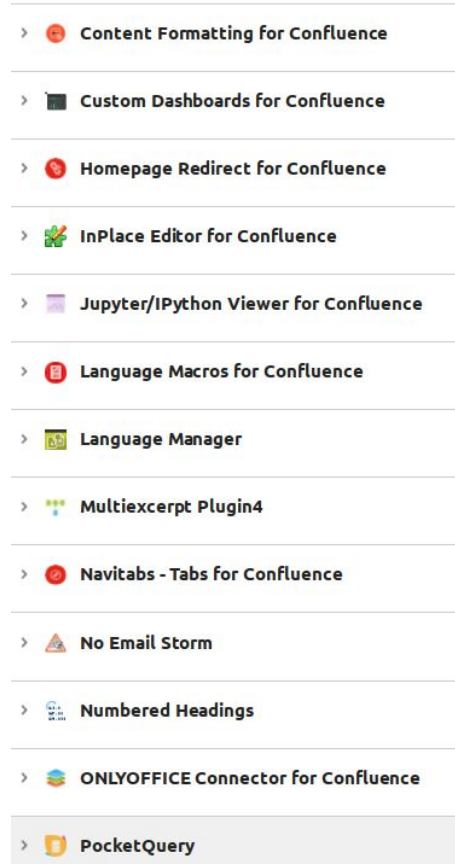


- Self-hosted and cloud versions available
- Proprietary, and expensive even for academic institutions
- “Loop-hole” available: non-profit organizations get a free self-hosted license + generous cloud licensing
- Future availability not guaranteed, which needs to be factored in the use decision
- Our installation dates back to 2015, so far Atlassian has been forthcoming





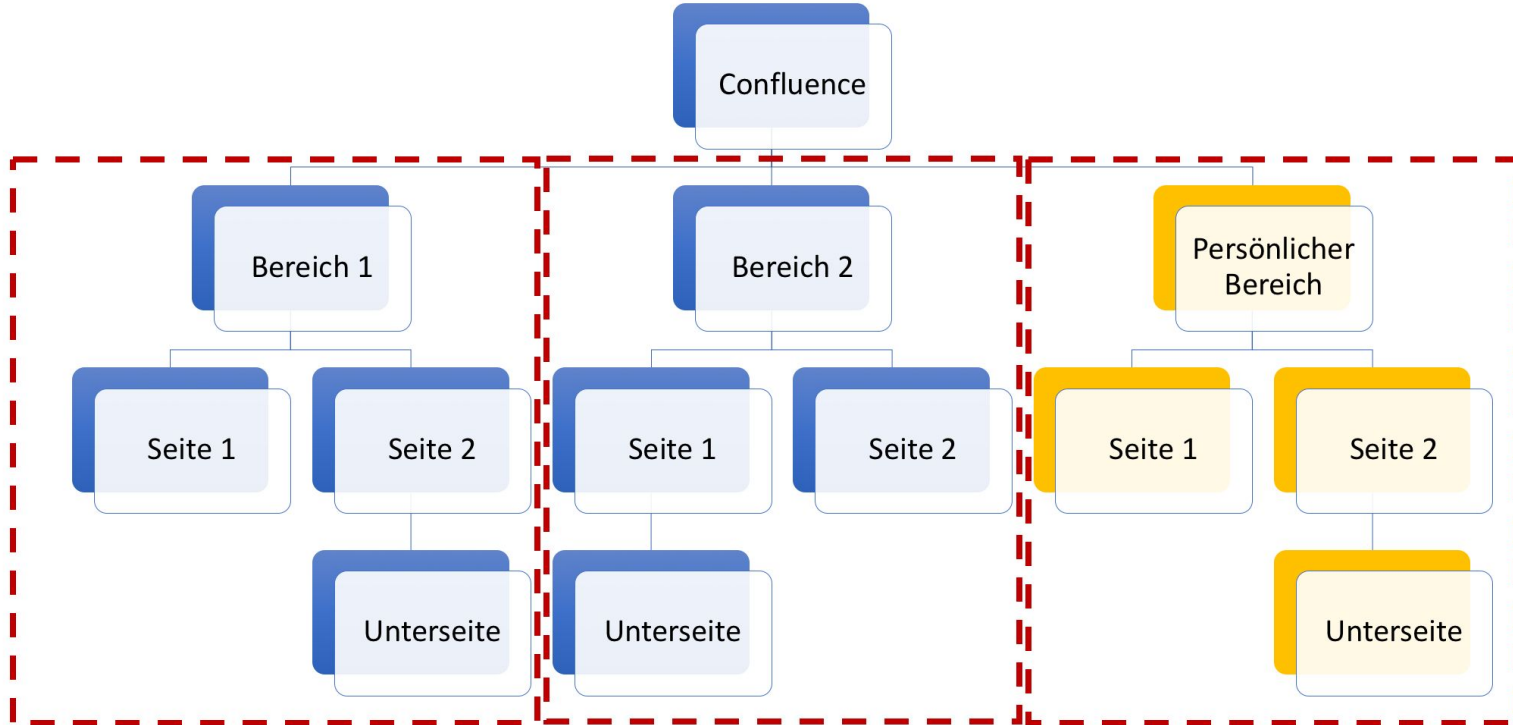
- Large number of **high quality plug-ins** available
- With a non-profit license, most can be used without license fees
- Examples
  - Content formatting
  - External SQL database access
  - API for scripted page generation/editing
  - Encryption





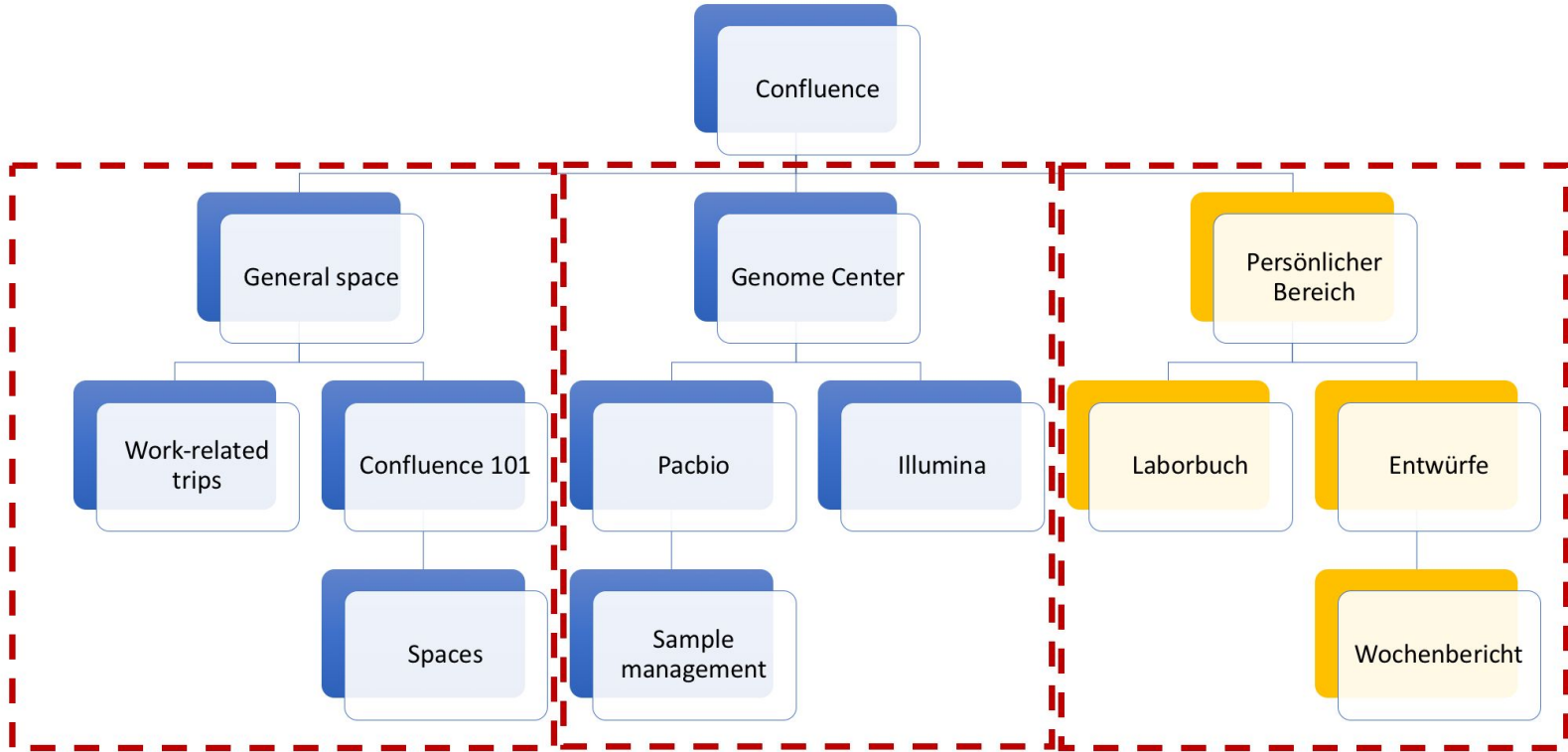
- User directories can be imported from LDAP or active directory
- Customization by template editing possible
- Page version history is available
- SQL database + Tomcat server stack
- Our instance is restricted to the intranet
- Access to Atlassian support available

# Data model





# Data model





- Each page is **versioned** -> changes can be tracked
- Structured notes with **page templates**
- **User-friendly editor** with support for images (*drag and drop*), code blocks and attachments
- **No enforced structure** -- a degree of user compliance is required
- Fine-grained **permissions system** for sharing



- Data model with **spaces** and **nested subpages** supports multiple organizational units
- User-friendly editor facilitates content creation
- Well-accepted at the institute
  - Departments have their own spaces, usually restricted
  - **Shared spaces** for core services and general information



2 main pillars and 4 levels of organization

Institute  
(including administration)

Department/Groups

Subgroups

Individuals

## Information

- Rather static
- Maintained by few
- Important for new people, new topics, new technologies + checking availability of stocks

## Documentation

- Very dynamic
- Used by many
- Ideally interactive and collaborative





- **Usability** -- user-friendly without the need for extensive training (except permissions management)
- **Flexibility** -- able to incorporate notebooks for lab and computational work
- Robust **social features**: collaboration, comments and supervision possible

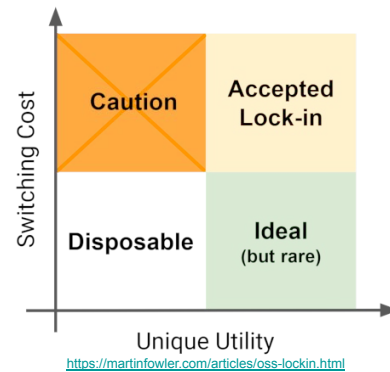


- Does not work out-of-the box: Set up ELN workflows requires **work** and **documentation**
- No specialized features for **lab stock management**
- No ordering SAP 'connection'
- **Flexibility** can be a disadvantage if strict workflows need to be followed

# Open-source vs. closed-source



- Licensing model has danger of **vendor lock-in**
- Fall-back strategies
  - Content can be migrated to **static HTML**
  - A working version does not need to be updated ASAP, except for critical security fixes
  - Security fixes are provided for 2 years
  - **Migration** to a paid plan as last resort







- Confluence can be used as an ELN for mixed computational/biology labs
- User-friendly interface which facilitates information sharing and increases adoption
- Flexibility, at a price: no enforced structure
- Set up of ELN workflows requires work
- No out-of-the box support for stock management
- Vendor lock-in needs to be considered

# Thank you for your attention!

---

