

新たな北極研究プロジェクト「ArCS」

深澤理郎^{2,1}、榎本浩之¹、齊藤誠一³、河野 健²

¹ 国立極地研究所

² 海洋研究開発機構

³ 北海道大学

New Research Project of “Arctic Challenge for Sustainability (ArCS)”

Masao Fukasawa^{2,1}, Hiroyuki Enomoto¹, Sei-ichi Saito³ and Takeshi Kawano²

¹ National Institute of Polar Research

² Japan Agency for Marine-Earth Science and Technology

³ Hokkaido University

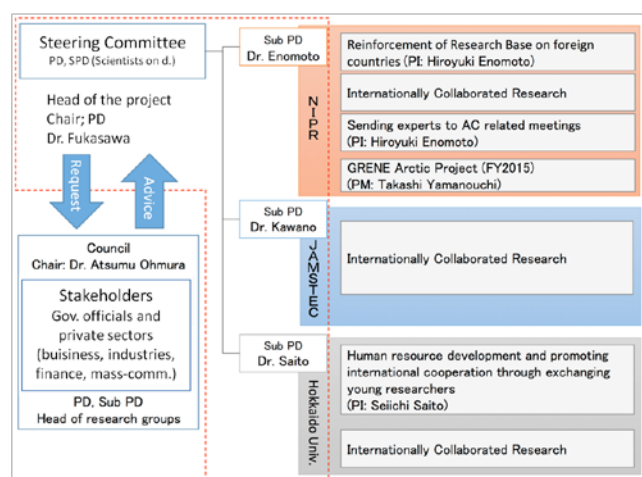
It has become a well-known fact that changes in the Arctic environments are closely connected to the weather /climate system in regions other than the Arctic. Also, the rapid environmental changes in the Arctic raise new socio-economic activities on a global scale fumbling a new and appropriate relationship among Arctic and non-Arctic states. Now, issues arising in the Arctic environment are nothing other than global issues.

New Japanese Arctic research project “Arctic Challenge for Sustainability (ArCS)” started in the summer of 2015. The gist of the project is as follows;

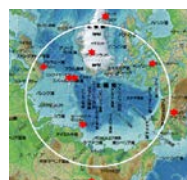
1. To enhance research system of Arctic science in order to assess the rapidly changing environment in the Arctic through projections with least ambiguity as possible under strong and close collaboration with scientists in other countries, especially from AC countries.
2. To provide necessary and sufficient information, not only from the viewpoint of natural science but also of social science, to domestic and international policy-makers actively in order to support AC countries and Japan for tackling to “Arctic problems” and also to strengthen Japan’s contributions to the AC and the international community.

These points will provide a scientific basis for Arctic policies of Japan and AC countries helping to grasp the present state of the Arctic environment and to improve future projections of various items, which enables sustainable development in the Arctic and contributes to secure the resilience of the Arctic.

Aiming at the gist, ArCS has the governance system as shown below. ArCS is driven by three institutes/university though the Steering Committee. The project is composed three pillars, namely, “Reinforcement of research base on foreign countries”, “Dispatching experts to AC related meeting and Human resource development”, and “International collaborated research (es)”. More than 15 institutes participate in “International collaborated research (es)” taking over GRENE project. It should be emphasized that ArCS has a council composed of stakeholders (government officials, private sectors, mass-media, etc.) who make advices concerning the possible research direction of the project. Also, ArCS plans to have an International Advisory Board to make our international relationship clearer and stronger in near future.



Reinforcement of research base/stations



Improving the basic research facilities for long-term stay and/or monitoring studies, which can be used by international collaborative studies.

Dispatching experts and young scientists and Human resource



Long-term research cooperation through the exchange of young researchers. Interdisciplinary human resource development. Sending experts to International committees and meetings.

Enforcing international research collaborations



Carrying out the international joint research project with AC countries. Considering the social and cultural impacts, providing information appropriately.