

Polar Biosci., 15, 97–107, 2002

Scientific note

## Zooplankton distribution patterns in relation to the Antarctic Polar Front Zones recorded by Continuous Plankton Recorder (CPR) during 1999/2000 *Kaiyo Maru* cruise

Kunio T. Takahashi<sup>1\*</sup>, So Kawaguchi<sup>2</sup>, Masaki Kobayashi<sup>1</sup>,  
Graham W. Hosie<sup>3</sup>, Mitsuo Fukuchi<sup>4</sup> and Tatsuki Toda<sup>1</sup>

<sup>1</sup>Department of Bioengineering, Soka University, 1-236, Tangi-cho, Hachioji-shi, Tokyo 192-8577

<sup>2</sup>National Research Institute of Far Seas Fisheries, 5-7-1, Orido, Shimizu 424-8633

<sup>3</sup>Australian Antarctic Division, Channel Highway, Kingston, Tasmania 7050, Australia

<sup>4</sup>National Institute of Polar Research, Kaga 1-chome, Itabashi-ku, Tokyo 173-8515

**Abstract:** During the 8th Antarctic Expedition of the *R/V Kaiyo Maru* of the Japan Fisheries Agency, October 1999 to March 2000, a Continuous Plankton Recorder (CPR) was used to investigate zooplankton composition and abundance in the surface of the Indian sector of Southern Ocean between South Africa and Antarctica. Total zooplankton abundance ranged from 0 to 432 individuals/segment (a 5 nautical miles of the surface towing) (Mean  $\pm$  SD=69.7  $\pm$  83.5). Zooplankton abundance tended to be higher in the high latitudes than the Sub-Antarctic Front (SAF). Opposite correlations were observed between zooplankton and seawater temperature (negative), salinity (positive) and *in vivo* fluorescence value (positive) reflecting the higher abundance of zooplankton found in the cooler waters south of the SAF, which also have higher salinities and phytoplankton. Among twenty-nine species/taxa identified, cyclopoid copepod *Oithona* spp. were found throughout the transect, and accounted for 53.3% of total zooplankton abundance. Cluster analysis based on seventeen dominant zooplankton species/taxa revealed two groups and three ungrouped individual species/taxa at the 84% dissimilarity level. On the other hand, the cluster analysis based on the samples obtained in a 5 nautical miles indicated two major distinctive zooplankton community groups at 89% dissimilarity level. The main group included most segments in the Polar Frontal Zone (PFZ: region between SAF and the Polar Front) and Antarctic Zone (AZ: south of the Polar Front) with high zooplankton abundance while the second mainly group comprised lower latitude segment with low abundance (<100 individuals/segment).

**key words:** Continuous Plankton Recorder (CPR), zooplankton, Sub-Antarctic Front (SAF), Polar Frontal Zone (PFZ), Antarctic Zone (AZ)

The Southern Ocean comprises several thermohaline zones separated by four major circumpolar fronts, such as Sub-Tropical Front (STF), Sub-Antarctic Front (SAF), Polar Front (PF) and Antarctic Divergence (AD) (Deacon, 1982; Hempel, 1985; Lutjeharms, 1985; Orsi *et al.*, 1995). Differences in zooplankton composition have been documented in each of these zones (Fukuchi and Tanimura, 1981; Watanabe *et al.*, 1984; Kawamura,

\*Present address: Department of Polar Science, The Graduate University for Advanced Studies, National Institute of Polar Research, Kaga 1-chome, Itabashi-ku, Tokyo 173-8515.

\*E-mail: [kuni@nipr.ac.jp](mailto:kuni@nipr.ac.jp)

1986; Pakhomov and McQuaid, 1996; Pakhomov *et al.*, 1996, 2000; Takahashi *et al.*, 1997, 1998), but, net sampling is not ideal for mapping and monitoring in the community because the method is discontinuous. Moreover, abundance estimated with small nets are sometime affected by net avoidance coupled with zooplankton patchiness causing high variation between samples (Tanimura *et al.*, 1999).

The Continuous Plankton Recorder (CPR) has been very successful in the monitoring zooplankton communities in the North Sea and North Atlantic Ocean over the past seventy years (Colebrook *et al.*, 1984; Fromentin and Planque, 1996). The CPR can collect surface plankton continuously for 450 nautical miles (830 km) during a single tow. Therefore in a short period, it is ideal for sampling in large areas and mapping for the distribution of zooplankton in relation to ocean environments such as frontal zones typically found through the Southern Ocean.

In 1999, CPRs were towed on the three transects across the Southern Ocean at around the same year from late November to early December. Three widely spaced transects along 25°E by R/V *Kaiyo Maru* (Japan), along 110°E by icebreaker *Shirase* (Japan) and along 158°E by RSV *Aurora Australis* (Australia), were investigated in order to observe the zooplankton patterns across the frontal zones of the circumpolar current. Comparison of zooplankton data between the three ships will be made in the near future. In this paper, we report more detailed results obtained on the *Kaiyo Maru* cruise and provide information on the composition, distribution and abundance of zooplankton communities in the Indian sector of Southern Ocean between the South Africa and the Antarctica.

#### Methods of the CPR survey

The Continuous Plankton Recorder (CPR) was towed during the 8th Antarctic Expedition of the R/V *Kaiyo Maru* of the Japan Fisheries Agency from 24 to 25 November 1999 in the Indian sector of Southern Ocean between the South Africa and the Antarctic from 49°S to 55°S (Fig. 1, Table 1). The CPR was towed at 10 m depth and towing speed was between 15 to 17 knots. Water enters the CPR through a 1.27 cm square entrance aperture and passes through a silk filtering mesh (mesh size 270  $\mu$ m). The movement of the CPR through the water turns an external propeller, which drives the silk across the tunnel at a rate of approximately 1 cm per 1 nautical miles of tow. This silk mesh is preserved in formaldehyde bath after sample collection. Four tows were successively conducted southward cruise from 49°S to 55°S and stopped every two degrees of latitude for the purposes of CTD casts and other sampling (Table 1). After returning to the laboratory, the start and end points of each CPR silk were identified and the silk was cut into a 5 nautical miles (approximately 9.3 km) sampling intervals (segment). There was little difference in number of segments and miles travelled for each 2° latitude segment (Table 1); therefore the CPR was winding on silk at a constant rate. Zooplankton were identified to the lowest taxa as possible, generally species or genus, and counted per segment. Euphausiid larvae were identified to metanauplius, calyptopis, furcilig and adult general stages.

Zooplankton abundance was compared with associated environmental data averaged over the same 5 nautical miles. Sea surface temperature, salinity and *in vivo* fluorescence values as an indicator of phytoplankton biomass were continuously recorded by an

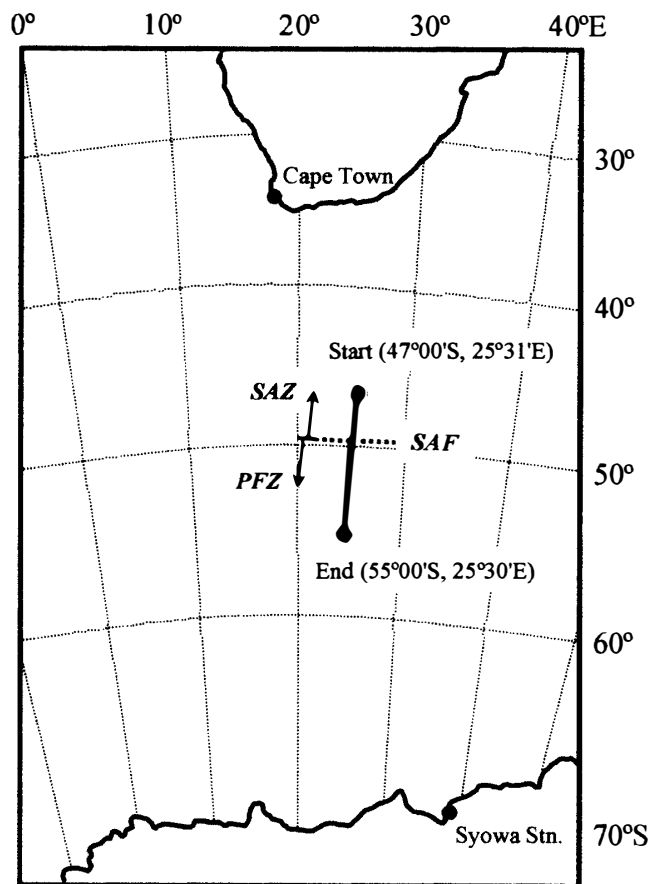


Fig. 1. Location of the CPR survey of *Kaiyo Maru* in November 1999. SAF: Sub-Antarctic Front, SAZ: Sub-Antarctic Zone, PFZ: Polar Frontal Zone.

Table 1. Details of CPR tows conducted on *Kaiyo Maru* in November 1999.

CPR Run #	Start		End		*No. of Segments	Distance towed (nautical miles)
	Date & Time GMT	Position	Date & Time GMT	Position		
1	Nov. 24, 1999;	47° 00.49'S	Nov. 24, 1999;	49° 00.14'S	25	122.17
	00:21	25° 31.08'E	07:49	25° 30.37'E		
2	Nov. 24, 1999;	49° 00.48'S	Nov. 24, 1999;	51° 00.33'S	25	121.99
	09:10	25° 31.09'E	16:50	25° 30.09'E		
3	Nov. 24, 1999;	51° 00.80'S	Nov. 25, 1999;	53° 00.30'S	25	124.72
	17:52	25° 31.10'E	01:27	25° 30.00'E		
4	Nov. 25, 1999;	53° 00.00'S	Nov. 25, 1999;	55° 00.20'S	26	126.38
	03:44	25° 29.40'E	11:38	25° 30.30'E		

\* Each segment of cutted silk corresponds to 5 nautical miles of towing distance.

automated surface water monitoring system which was equipped as a part of an Electronic Plankton Counting and Sizing System (EPCS, Honchigo Co. LTD; see detail Mackas *et al.*, 1981) installed on R/V *Kaiyo Maru*.

Zooplankton data were further analyzed by cluster analysis in order to compare species/taxa composition between areas covered by the segments and species/taxa associations. For the comparison among the areas, data were transformed using a  $\log_{10}(x+1)$  function to normalize the areal different of the abundance. Only numerically dominant species/taxa were used in the comparison of species/taxa associations. Dominant species/taxa were defined as those comprising >4% of the total number of individuals for any segments. Table 2 lists the seventeen dominant species/taxa defined. Complete details of the data analysis techniques have been described in Hosie (1994a, b) and Hosie and Cochran (1994). Statistical analyses were performed using SYSTAT<sup>®</sup> 7.0 for Windows.

Table 2. Dominant species/taxa used in the inverse cluster analysis. Dominant species/taxa were defined as those with a >4% numerical dominance for any segment.

Species/taxa with > 4% numerical dominance	
<i>Thysanoessa macrura</i>	Copepod nauplii
<i>Thysanoessa macrura</i> furcilia	<i>Themisto gaudichaudi</i>
Unidentifiable euphausiid	<i>Eukrohnia hamata</i>
<i>Calanus simillimus</i>	<i>Oikopleura</i> spp.
<i>Metridia lucens</i>	<i>Fritillaria</i> spp.
<i>Rhincalanus gigas</i> nauplius	Foraminifera
Small calanoid copepods	<i>Tomopteris</i> spp.
Calanoid copepodites	Medusae
<i>Oithona</i> spp.	

#### Zooplankton abundance and environmental factors

Seawater temperature varied from 7.1 to 0.84°C in the whole transect (Fig. 2). Seawater temperature decreased from low latitude to high latitude and rapidly decreased (about 3°C) around 49°S (segment number 30). Sievers and Emery (1978) defined the Sub-Antarctic Front (SAF) as that front which was found at the most vertically orientated isotherm within a subsurface temperature gradient between 3 and 5°C. Moreover, the average temperature decrease at the sea surface for the SAF is about 4°C (Lutjeharms and Valentine, 1984). Therefore, this location around 49°S (segment number 30) was considered to be the SAF. Temperatures of near 1°C at the end of the tows (53–55°S) would suggest that the Polar Front (PF) had been crossed, and then we stopped sampling within the Antarctic Zone (AZ: south of the PF). CTD data indicate the PF was at 53°S (National Research Institute of Far Seas Fisheries, 2001). The actual position of the PF can only be properly identified by deep oceanographic observation (Orsi *et al.*, 1995). The importance of the SAF as a biogeographic boundary is still unclear (Pakhomov and McQuaid, 1996), although some importance have been pointed out in several studies (Deacon, 1982; Froneman *et al.*, 1995; Pakhomov *et al.*, 1999). Zooplankton abundance tended to be higher in the high latitudes than the Sub-Antarctic Zone (SAZ: region

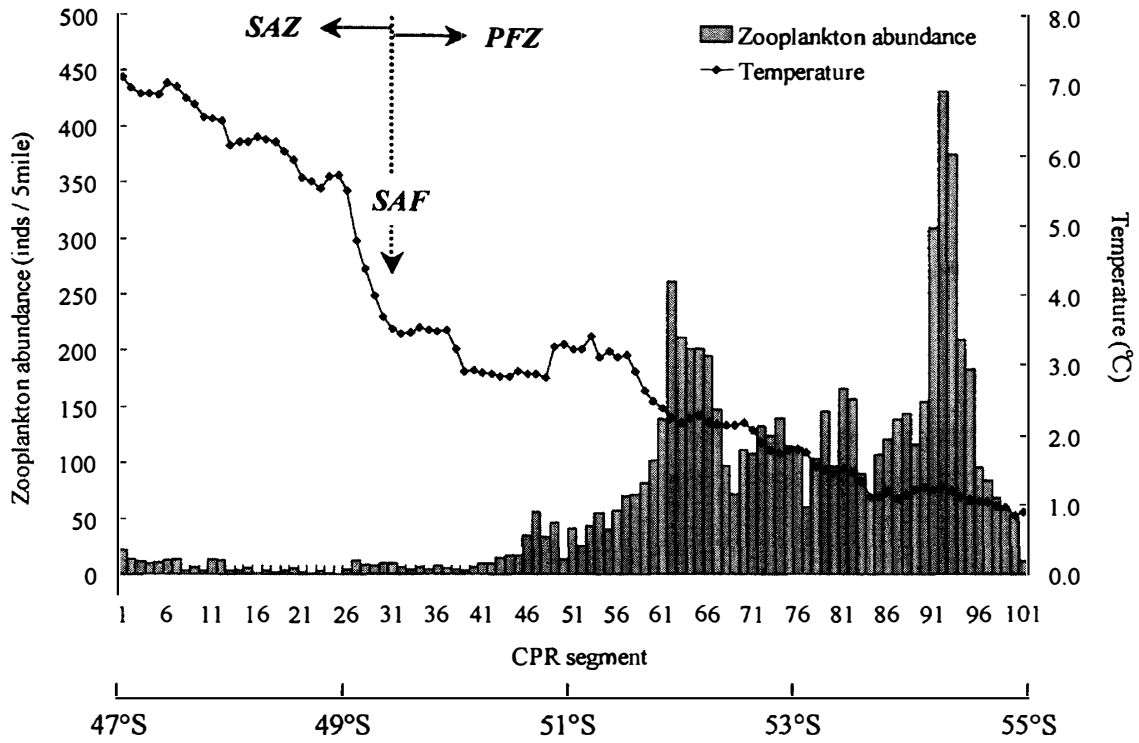


Fig. 2. Latitudinal changes of abundance of zooplankton per 5 nautical mile segments and averaged temperature for the segment.

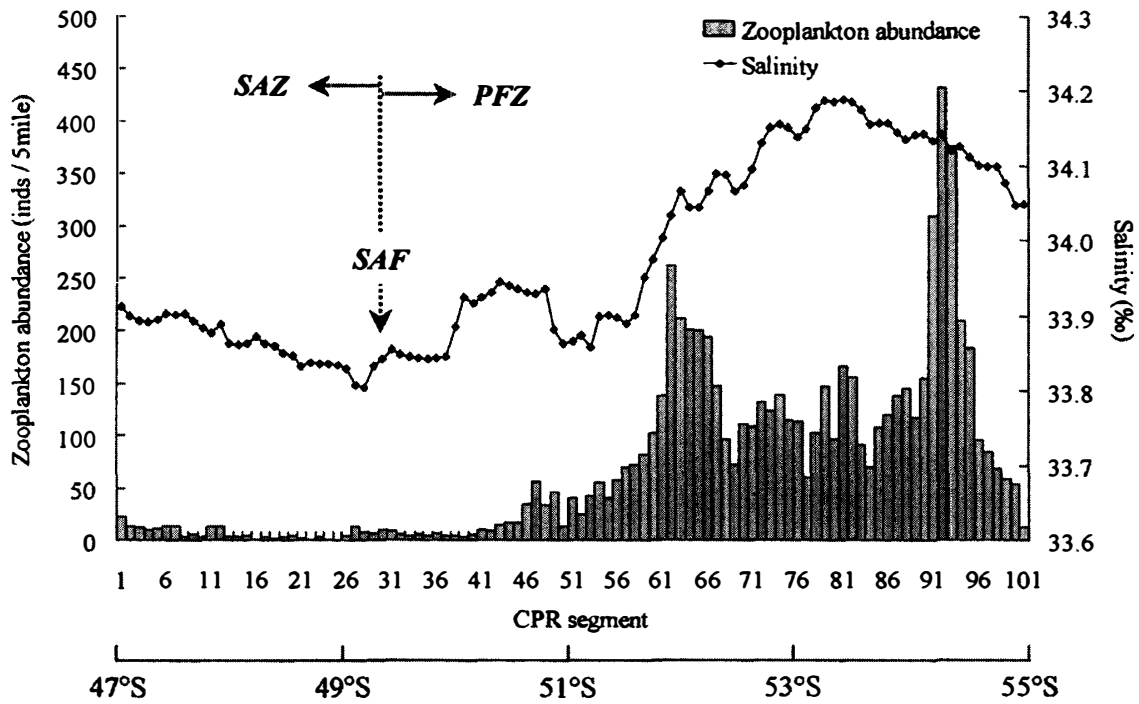


Fig. 3. Latitudinal changes of abundance of zooplankton per 5 nautical mile segments and averaged salinity for the segment.

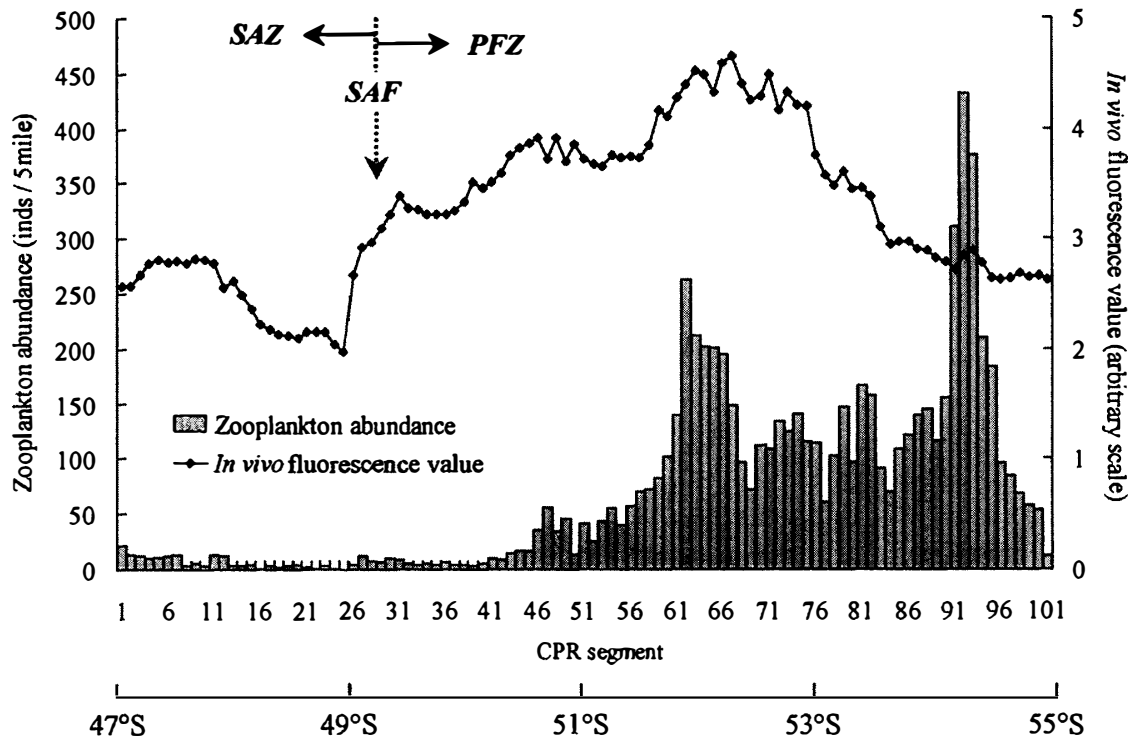


Fig. 4. Latitudinal changes of abundance of zooplankton per 5 nautical mile segments and averaged *in vivo* fluorescence value for the segment.

between SAF and the Sub-Tropical Convergence, see Figs. 2, 3 and 4). Total zooplankton abundance ranged from 0 to 432 individuals/segment (5 nautical miles) (Mean  $\pm$  SD =  $69.7 \pm 83.5$ ). A total of 7040 specimens were counted. Overall, there is a negative correlation between surface temperature and zooplankton abundance ( $F=62.55$ ,  $DF=1$ ,  $99$ ,  $P<0.0001$ ). Salinity varied from 33.80 to 34.19 psu and increased from low latitude to high latitude (Fig. 3). A strong positive correlation was found between salinity and zooplankton abundance ( $F=111.5$ ,  $DF=1$ ,  $99$ ,  $P<0.0001$ ). *In vivo* fluorescence values tended to be higher in the high latitudes than the SAF and were highest, up to 0.047, at  $52^{\circ}36'S$  (segment number 67) (Fig. 4). The values dropped substantially around  $53^{\circ}S$  (segment number 75). A significant relationship between zooplankton abundance and *in vivo* fluorescence values was found for the whole transect ( $F=11.99$ ,  $DF=1$ ,  $99$ ,  $P=0.0008$ ). However, a similar relationship was not observed within the Polar Frontal Zone (PFZ: region between SAF and the PF) and the AZ. In this study, CPR run started well north of the SAF as seen with the higher temperature and much less zooplankton abundance. Consequently, opposite trends of the correlations were observed between zooplankton and seawater temperature (negative), salinity (positive) and *in vivo* fluorescence value (positive) reflecting the higher abundance of zooplankton found in the cooler waters south of the SAF, which also have higher salinities and phytoplankton biomass. The zooplankton abundance of the SAZ was characterized by low densities. A previous study conducted in the Atlantic sector of the Southern Ocean ( $0^{\circ}$ – $10^{\circ}E$ ) showed that pelagic predators, mainly chaetognaths and euphausiids, virtually controlling

secondary production around SAZ (Pakhomov *et al.*, 1999). Therefore, the low zooplankton abundance within the SAZ may appear to be the result of high predation pressure by carnivorous macroplankton, and/or a general low productivity that was caused by the other factor (s).

#### Species composition and distribution

A total of twenty-nine species/taxa of zooplankton were classified. Cyclopoid copepod *Oithona* spp. were found throughout the transect, and accounted for 53.3% of total zooplankton abundance, followed by small calanoid copepods (*Microcalanus* sp. or

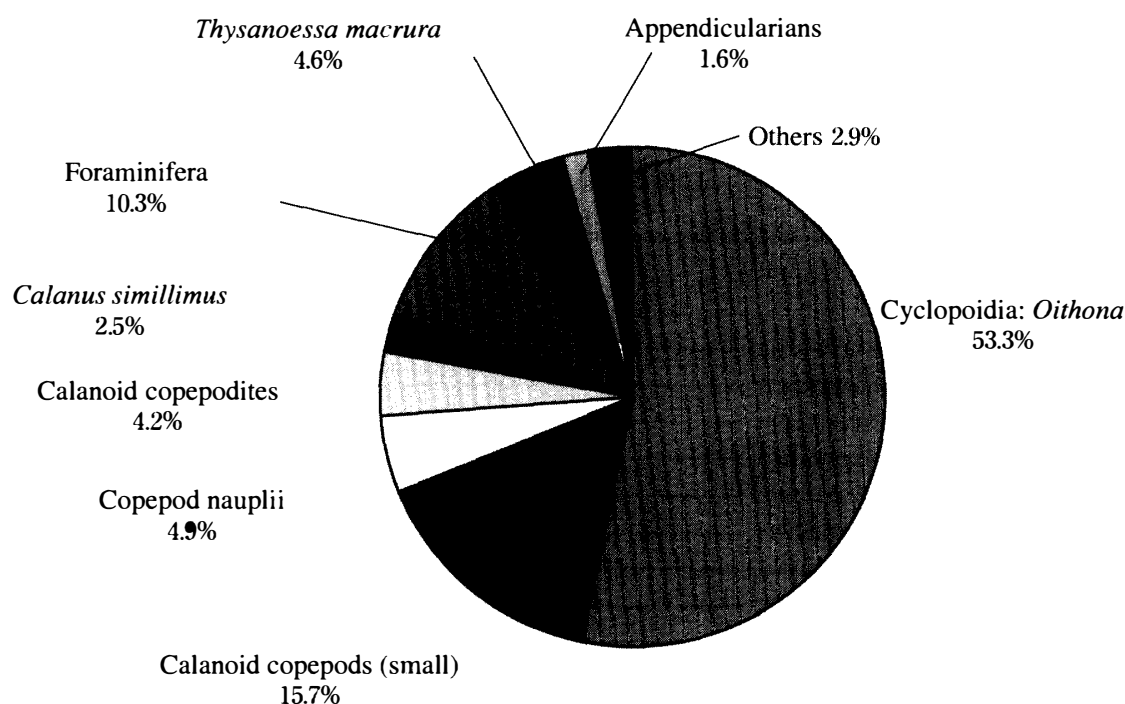


Fig. 5. Major dominant zooplankton species/taxa combine for all segments.

*Ctenocalanus* sp.) (15.7%), copepod nauplii (4.9%), calanoid copepodites (4.2%), *Calanus simillimus* (2.5%), foraminiferans (10.3%), the euphausiid *Thysanoessa macrura* (4.6%) and appendicularians (*Oikopleura* spp. and *Fritillaria* spp.) (1.6%) (Fig. 5). In this study, copepods were found to be the most important group of zooplankton throughout the transect. This result agrees with previous studies in the Indian sectors of the Southern Ocean (Foxton, 1956; Kawamura, 1986; Yamada and Kawamura, 1986; Voronina, 1998). Pakhomov *et al.* (2000) observed that *C. simillimus* was one of the most important species in the PFZ due to its abundance and biomass. Abundance of *C. simillimus* in this study also increased in the PFZ, but abundance of *Oithona* spp. were higher overall (Fig. 6).

Seventeen species/taxa were classified as numerically dominant (>4%) in the whole study area (Table 2) therefore they were included in the cluster analysis of species/taxa. The cluster analysis revealed two groups and three ungrouped individuals (Unidentifiable

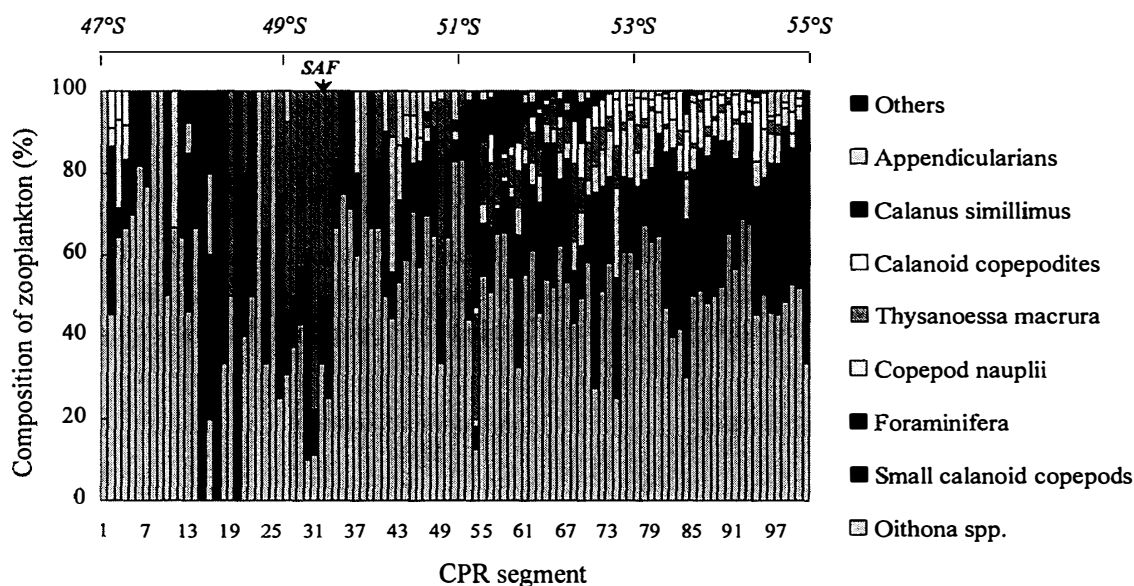


Fig. 6. Composition of dominant zooplankton species/taxa per 5 nautical mile segment.

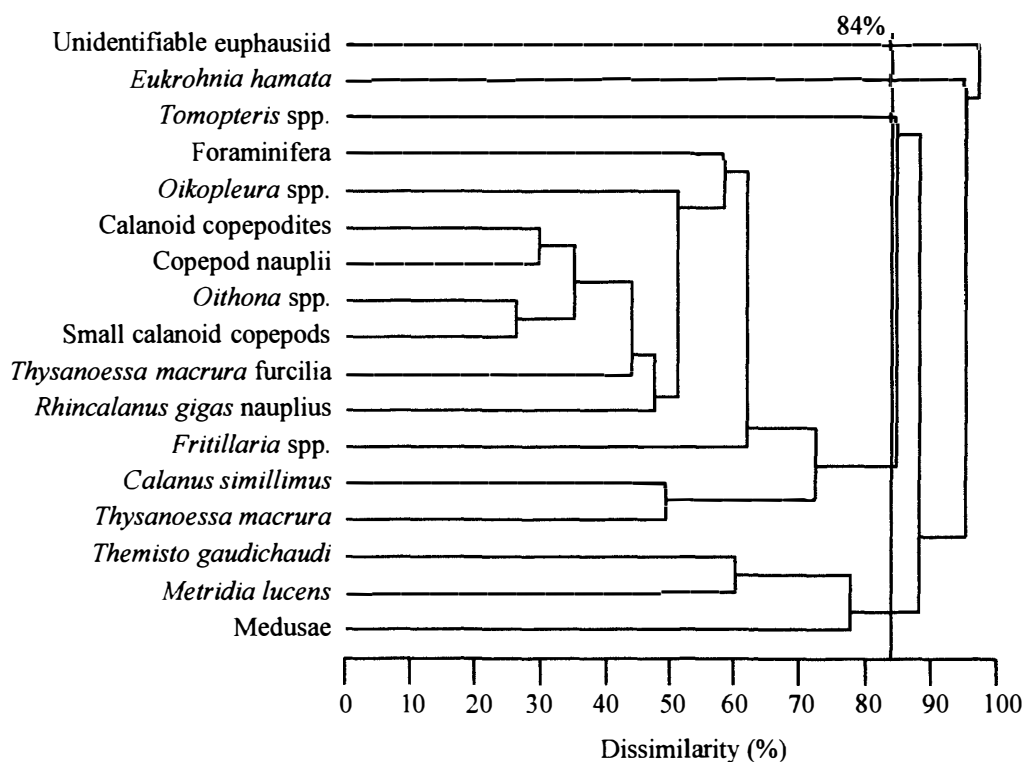


Fig. 7. Cluster analysis of comparison of species/taxa. Seventeen >4% numerically dominant species/taxa common to all transects were used.

euphausiids, *Eukrohnia hamata* and *Tomopteris* spp.) at the 84% dissimilarity level (Fig. 7). The main group comprised eleven species/taxa, Foraminifera, *Oikopleura* spp., calanoid copepodites, copepod nauplii, *Oithona* spp., small calanoid copepods,



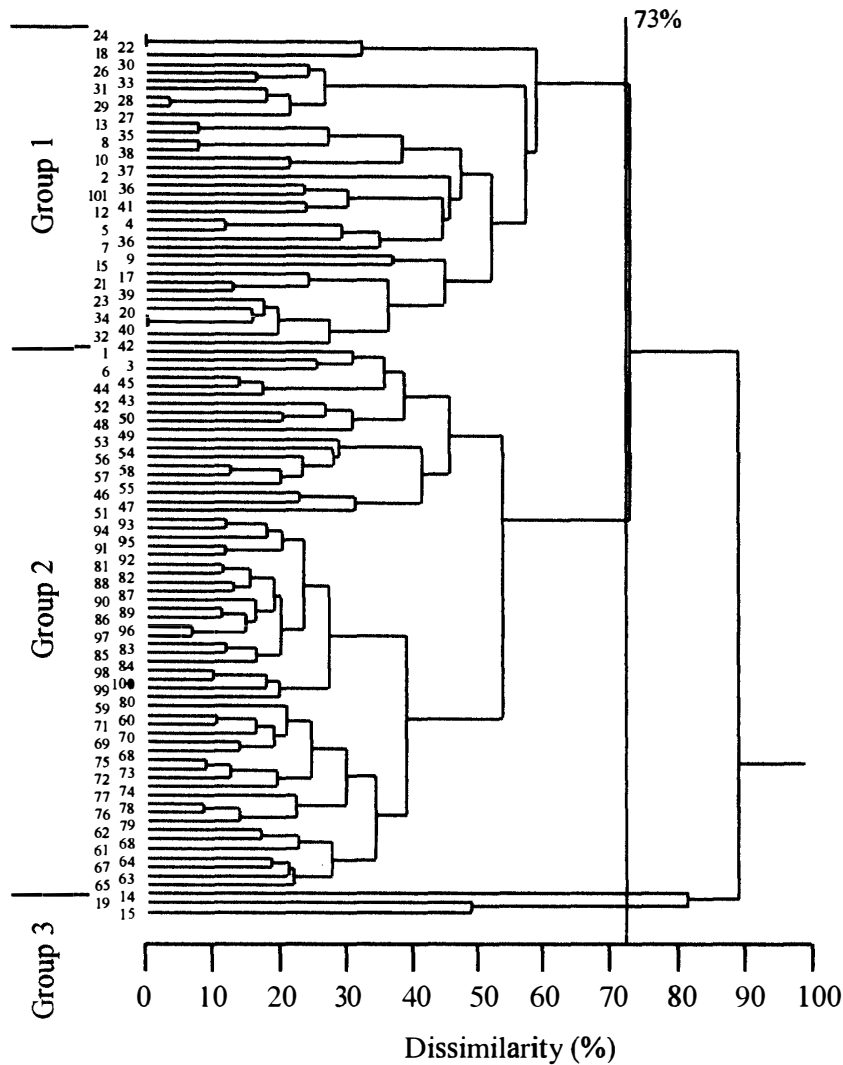


Fig. 8. Cluster analysis of comparison of segments.

*Thysanoessa macrura* furcilia, *Rhincalanus gigas* nauplius, *Fritillaria* spp., *Calanus simillimus* and *T. macrura*. These results suggest that dominant species/taxa show similar associations throughout the transect (Figs. 5, 7). The second group was consisted of 3 species/taxa, *Themisto gaudichaudi*, *Metridia lucens* and medusae. Unidentifiable euphausiids, *Eukrohnia hamata* and *Tomopteris* spp. showed no close association with any other species/taxa. On the other hand, the cluster analysis based on the segments indicated two major distinctive zooplankton community groups at 73% dissimilarity level (Fig. 8). The first major group included most segments in the PFZ with high zooplankton abundance while the second group comprised lower latitude segments with low abundance (<100 individuals/segment). Thus, the major separation of segments coincided with the position of the SAF, which clearly distinguished the Antarctic and Sub-Antarctic/Sub-Tropical zooplankton communities. Group three comprised three segments, with low zooplankton abundance and comprising rare species.

The results of this study show that there are distinct zonation patterns in the zooplankton communities of the Southern Ocean, separated by the SAF. For identification of any long term changes and/or evaluation of zooplankton patterns in relation to variation in the SAF position, accumulated CPR data will be necessary. However, in the short term the CPR is valuable for the study of within season intra-annual patterns of zooplankton abundance and for mapping zooplankton patterns in relation to frontal zones.

### Acknowledgments

We are grateful to the officers and crew of the R/V *Kaiyo Maru* for their assistance during cruise. We would like to thank Mr. J.A. Kitchener, Australian Antarctic Division and Ms. H. Umeda, The Graduate University for Advanced Studies, for helping us with the zooplankton identification.

### References

- Colebrook, J.M., Robinson, G.A., Hunt, H.G., Roskell, J., John, A.W.G., Bottrell, H.H., Lindley, J.A., Collins, N.R. and Halliday, N.C. (1984): Continuous Plankton Records: A possible reversal in the downward trend in the abundance of plankton of the North Sea and the north-east Atlantic. *J. Cons. Int. Explor. Mer.*, **41**, 304–306.
- Deacon, G.E.R. (1982): Physical and biological zonation of the Southern Ocean. *Deep-Sea Res.*, **29**, 1–15.
- Froneman, P.W., McQuaid, C.D. and Perissinotto, R. (1995): Biogeographic structure of the microphytoplankton assemblages of the south Atlantic and Southern Ocean during austral summer. *J. Plankton Res.*, **17**, 1791–1802.
- Fromentin, J.-M. and Planque, B. (1996): *Calanus* and environment in the eastern North Atlantic. II. Influence of the North Atlantic Oscillations on *C. finmarchicus* and *C. heloglandicus*. *Mar. Ecol. Prog. Ser.*, **134**, 111–118.
- Foxton, P. (1956): The distribution and the standing crop of zooplankton in the Southern Ocean. *Discovery Rep.*, **28**, 191–236.
- Fukuchi, M. and Tanimura, A. (1981): Plankton samplings on board Fuji in 1972–1980. *JARE Data Rep.*, **60** (Mar. Biol. 1), 27 p.
- Hempel, G. (1985): On the biology of polar seas, particularly the Southern Ocean. *Marine Biology of Polar Regions and Effect of Stress on Marine Organisms*, ed. by J.S. Gray and M.E. Christiansen. Chichester, Wiley, 3–33.
- Hosie, G.W. (1994a): The macrozooplankton communities in the Prydz Bay region, Antarctica. *Southern Ocean Ecology: The BIOMASS Perspective*, ed. by S.Z. El-Sayed. Cambridge, Cambridge University Press, 93–123.
- Hosie, G.W. (1994b): Multivariate analyses of the macrozooplankton community and euphausiid larval ecology in the Prydz Bay region, Antarctica. *ANARE Rep.*, **137**, 1–209.
- Hosie, G.W. and Cochran, T.G. (1994): Mesoscale distribution patterns of macrozooplankton communities in Prydz Bay, Antarctica—January to February 1991. *Mar. Ecol. Prog. Ser.*, **106**, 21–39.
- Kawamura, A. (1986): Has marine Antarctic ecosystem changed?—A tentative comparison of present and past macrozooplankton abundances. *Mem. Natl Inst. Polar Res., Spec., Issue*, **40**, 197–211.
- Lutjeharms, J.R.E. (1985): Location of frontal systems between Africa and Antarctica: some preliminary results. *Deep-Sea Res.*, **32**, 1499–1509.
- Lutjeharms, J.R.E. and Valentine, H.R. (1984): Southern Ocean thermal fronts south of Africa. *Deep-Sea Res.*, **31**, 1461–1475.
- Mackas, D.L., Curran, T.A. and Sloan, D. (1981): An electronic zooplankton counting and sizing system. *Oceans; '81 Conferanc Record, Vol. 2*, 783–786.
- National Research Institute of Far Seas Fisheries (2001): Report of the RV *Kaiyo maru* Antarctic cruise in

- 1999/2000. Shimizu, Japan Fishery Agency, 186 p. (in Japanese).
- Orsi, A.H., Whitworth T. III and Norwlin, W.D., Jr. (1995): On the meridional extent and fronts of the Antarctic Circumpolar Current. *Deep-Sea Res.*, **42**, 641–673.
- Pakhomov, E.A. and McQuaid, C.D. (1996): Distribution of surface zooplankton and seabirds across the Southern Ocean. *Polar Biol.*, **16**, 271–286.
- Pakhomov, E.A., Perissinotto, R. and McQuaid, C.D. (1996): Comparative structure of the macrozooplankton/micronekton communities of the Subtropical and Antarctic Polar Fronts. *Mar. Ecol. Prog. Ser.*, **111**, 155–169.
- Pakhomov, E.A., Perissinotto, R. and Froneman, P.W. (1999): Predation impact of carnivorous macrozooplankton and micronekton in the Atlantic sector of the Southern Ocean. *J. Mar. Sys.*, **19**, 47–64.
- Pakhomov, E.A., Perissinotto, R., McQuaid, C.D. and Froneman, P.W. (2000): Zooplankton structure and grazing in the Atlantic sector of the Southern Ocean in late austral summer 1993. Part 1. Ecological zonation. *Deep-Sea Res.*, **47**, 1663–1686.
- Sievers, H.A. and Emery, W.J. (1978): Variability of the Antarctic Polar Frontal Zone in the Drake Passage—summer 1976–1977. *J. Geophys. Res.*, **83**, 3010–3022.
- Takahashi, K., Tanimura, A. and Fukuchi, M. (1997): Plankton sampling on board Shirase in 1983–1996—NORPAC standard net samples—. *JARE Data Rep.*, **224** (Mar. Biol. 28), 35 p.
- Takahashi, K., Tanimura, A. and Fukuchi, M. (1998): Long-term observation of zooplankton biomass in the Indian Ocean sector of the Southern Ocean. *Mem. Natl Inst. Polar Res., Spec. Issue*, **52**, 209–219.
- Tanimura, A., Hosie, G.W. and Chiba, S. (1999): Does zooplankton indicate environmental variability? *Proceedings of the Japanese Society of Oceanography, Special Symposium on Southern Ocean and Antarctica. Kaiyo Monthly*, **31**, 795–803 (in Japanese).
- Voronina, N.M. (1998): Comparative abundance and distribution of major filter-feeders in the Antarctic pelagic zone. *J. Mar. Sys.*, **17**, 375–390.
- Watanabe, K., Nakajima, Y., Ino, Y., Sasaki, H. and Fukuchi, M. (1984): Plankton samplings on board Fuji in 1980–1983. *JARE Data Rep.*, **90** (Mar. Biol. 5), 11 p.
- Yamada, S. and Kawamura, A. (1986): Some characteristics of the zooplankton distribution in the Prydz Bay region of the Indian sector of the Antarctic Ocean in the summer of 1983/84. *Mem. Natl Inst. Polar Res., Spec. Issue*, **44**, 86–95.

*(Received September 4, 2001; Revised manuscript accepted November 1, 2001)*