



Kinematics of male *Eupalaestrus weijenberghi* (Araneae, Theraphosidae) locomotion on different substrates and inclines

Valentina Silva-Pereyra¹, C Gabriel Fábrika¹, Carlo M. Biancardi² and Fernando Pérez-Miles³

¹Unidad de Investigación en Biomecánica de la Locomoción Humana, Departamento de Biofísica, Facultad de Medicina, Universidad de la República, Montevideo, Uruguay

²Laboratorio de Biomecánica y Análisis del Movimiento, Departamento de Ciencias Biológicas, Centro Universitario Regional Litoral Norte, Universidad de la República, Paysandú, Uruguay

³Sección Entomología, Facultad de Ciencias, Universidad de la República, Montevideo, Uruguay

ABSTRACT

Background. The mechanics and energetics of spider locomotion have not been deeply investigated, despite their importance in the life of a spider. For example, the reproductive success of males of several species is dependent upon their ability to move from one area to another. The aim of this work was to describe gait patterns and analyze the gait parameters of *Eupalaestrus weijenberghi* (Araneae, Theraphosidae) in order to investigate the mechanics of their locomotion and the mechanisms by which they conserve energy while traversing different inclinations and surfaces.

Methods. Tarantulas were collected and marked for kinematic analysis. Free displacements, both level and on an incline, were recorded using glass and Teflon as experimental surfaces. Body segments of the experimental animals were measured, weighed, and their center of mass was experimentally determined. Through reconstruction of the trajectories of the body segments, we were able to estimate their internal and external mechanical work and analyze their gait patterns.

Results. Spiders mainly employed a walk-trot gait. Significant differences between the first two pairs and the second two pairs were detected. No significant differences were detected regarding the different planes or surfaces with respect to duty factor, time lags, stride frequency, and stride length. However, postural changes were observed on slippery surfaces. The mechanical work required for traversing a level plane was lower than expected. In all conditions, the external work, and within it the vertical work, accounted for almost all of the total mechanical work. The internal work was extremely low and did not rise as the gradient increased.

Discussion. Our results support the idea of considering the eight limbs functionally divided into two quadrupeds in series. The anterior was composed of the first two pairs of limbs, which have an explorative and steering purpose and the posterior was more involved in supporting the weight of the body. The mechanical work to move one unit of mass a unit distance is almost constant among the different species tested. However, spiders showed lower values than expected. Minimizing the mechanical work could help to limit metabolic energy expenditure that, in small animals, is relatively very high. However, energy recovery due to inverted pendulum mechanics only accounts for only a small fraction of the energy saved. Adhesive setae present in the tarsal, scopulae,

Submitted 5 February 2019
Accepted 25 August 2019
Published 26 September 2019

Corresponding author
Valentina Silva-Pereyra,
valentinasilva@fmed.edu.uy,
vlntnslv@gmail.com

Academic editor
Joseph Gillespie

Additional Information and
Declarations can be found on
page 21

DOI 10.7717/peerj.7748

© Copyright
2019 Silva-Pereyra et al.

Distributed under
Creative Commons CC-BY 4.0

OPEN ACCESS

and claw tufts could contribute in different ways during different moments of the step cycle, compensating for part of the energetic cost on gradients which could also help to maintain constant gait parameters.

Subjects Animal Behavior, Entomology, Zoology

Keywords Tarantulas, Mechanical-work, Gait analysis, Adhesion, Body models

INTRODUCTION

Movement is one of the key traits affecting the life of most animal species and determining their interactions with the environment, including the search for shelter, food, mates, and the ability to escape from predators (*Alexander, 1999*). Evolutionary selective pressures have driven animals to display patterns of movement that are physiologically efficient, fast, adjustable, or stable. Locomotion through different environments could condition the morphology and physiology of animals (*Dickinson et al., 2000*).

The order Araneae are able to move on a wide range of surfaces, with a broad locomotor repertoire that includes the capacity to move backwards and turn on the spot (*Spagna & Peattie, 2012; Nederegger, 2013; Zeng & Crews, 2018*). Considering the characteristics of the spiders, especially their control systems, they are an excellent model to use in the study on the general features of locomotion (*Biancardi et al., 2011*). Pendulum mechanics have influenced the evolution of spiders that live hanging from their webs, as well as species that undertake an errant terrestrial lifestyle (*Moya-Laraño et al., 2008; Blackledge et al., 2009*). However, normal terrestrial walking is comparable to an inverted pendulum, which would imply higher energetic costs of locomotion when compared to suspensory, or truly pendular, locomotion (*Wolff, Nentwig & Gorb, 2013*). The octopedal locomotion of spiders constitutes an extreme condition in terrestrial locomotion, related to the specialization of body segment groups (tagmosis). Other terrestrial taxa with more locomotory limbs lack such specialized segments (*DelaFuente, 1994*).

Locomotion has been widely studied in bipedal and quadrupedal vertebrates (e.g.: *Cavagna, Heglund & Taylor, 1977; Heglund et al., 1982*), in hexapedal arthropods like cockroaches (*Full & Tu, 1990; Full & Tu, 1991; Kram, Wong & Full, 1997*), and in functional octopedal arthropods like crabs (*Blickhan & Full, 1987*). More recently, some research has been carried out on arachnids, which has included work examining both functional hexapedal harvestmen (*Sensenig & Shultz, 2006*) and truly octopedal spiders (*Herreid & Full, 1980; Shillington & Peterson, 2002; Biancardi et al., 2011; Spagna, Valdivia & Mohan, 2011; Wang et al., 2011; Spagna & Peattie, 2012; Weihmann, 2013; Booster et al., 2015; Grossi et al., 2016a; Shamble et al., 2017; Wilshin et al., 2018*). The mechanical energy needed to move a unit mass for a unit distance (external work) is almost the same for all terrestrial legged species, despite the huge morphological differences in size, shape, skeleton, and the number and position of locomotory limbs. These similarities suggest common design constraints for terrestrial locomotion with respect to energy expenditure (*Full & Tu, 1990; Sensenig & Shultz, 2006*).

The external mechanical work recorded for the locomotion of *Grammostola anthracina* (C.L. Koch, 1842) (Araneae, Theraphosidae) was lower than in other species ([Biancardi et al., 2011](#)). However, the cost of transport (i.e., the metabolic energy expenditure to move a unit mass for a unit distance, CoT) recorded for Theraphosidae was comparable to that of other species of the same mass ([Herreid & Full, 1980](#); [Anderson & Prestwich, 1985](#); [Shillington & Peterson, 2002](#); [Grossi et al., 2016a](#)). Therefore, the mechanical efficiency (mechanical work/metabolic cost) should be lower for the Theraphosidae species than other species of comparable mass.

In order to study locomotion of Theraphosidae and other groups of spiders, one must consider the scopulae and claw tufts, which are adhesive devices on their legs. These structures could play an important role in locomotion, both on level ground and while climbing ([Niederegger & Gorb, 2006](#); [Foelix, 2011](#); [Spagna & Peattie, 2012](#); [Wolff, Nentwig & Gorb, 2013](#); [Wohlfart et al., 2014](#); [Lapinski, Walther & Tschapka, 2015](#); [Pérez-Miles, Perafán & Santamaría, 2015](#); [Wolff & Gorb, 2015](#); [Pérez-Miles et al., 2017](#)). Most of the species of Mygalomorphae (72%) have adhesive setae and they usually display cursorial lifestyles ([Wolff, Nentwig & Gorb, 2013](#); [Pérez-Miles et al., 2017](#)). However, the contribution of these features with respect to climbing is subject to controversy ([Pérez-Miles, Perafán & Santamaría, 2015](#); [Pérez-Miles et al., 2017](#)). [Pérez-Miles, Perafán & Santamaría \(2015\)](#) analyzed the role of the adhesive setae of different species to improve locomotion on level ground and at different gradients of incline using both glass and Teflon as substrate for their trials. As expected, they determined that glass contributed to higher levels of friction than Teflon ([Roth & Willis, 1952](#); [Pérez-Miles, Perafán & Santamaría, 2015](#)). We hypothesized that both the gait parameters and the mechanical work of locomotion should be affected by adhesion patterns based on these findings. Particularly, we expected duty factors to increase on slippery surfaces and also upward slope ([Parsons, Pfau & Wilson, 2008](#); [Weihmann, Brun & Pycroft, 2017](#)).

Experiments were performed on male *Eupalaestrus weijenberghi* (Thorell, 1894) and the same substrates and inclines were used that have been employed in previous works ([Pérez-Miles, Perafán & Santamaría, 2015](#)). *E. weijenberghi* is a medium-sized tarantula common in the Pampean biogeographic province. In contrast with other spiders, adult males are larger but lighter than females and have longer legs ([Costa, Pérez-Miles & Mignone, 2004](#)). Juveniles and adult females live in burrows that they dig in the soil of meadows. Adult males leave their burrows in search for females after the maturation molt and during the reproductive season. Males walk persistently day and night, and usually when the weather is cloudy and wet. Their adult lifespan is typically only about two months and it is spent in the pursuit of females with little time spent on feeding ([Pérez-Miles et al., 2005](#)).

Our objective was to analyze the gait patterns, parameters, mechanics, and energetics of locomotion in this species and how it is affected by changes in substrate inclinations and surfaces. Results are discussed in relation to the biology of this terrestrial arachnid.

MATERIALS & METHODS

Animals

The experiments were carried out with *E. weijenberghi* males that were collected in March of 2013 ($n = 12$; mass = 5.25 ± 0.63 g; 1.61 ± 0.16 cm; mean \pm SD) from Uruguay, Canelones, and Salinas North. Individuals were maintained in glass vials 6.5 cm in diameter by 12 cm high, with soil and water provisions. They were fed weekly with *Blaptica dubia* (Blattodea, Blaberidae). Voucher specimens were deposited in the Arachnological Collection of the Facultad de Ciencias, Universidad de la República, Montevideo, Uruguay (FCE-My).

Experimental procedure

Free and autonomous displacements of the spiders were recorded during the reproductive season (March–April 2013) on four smooth surfaces: glass and Teflon on level (g0; t0) and glass and Teflon on a 12° incline (g12; t12). The inclination used was selected after considering the average value of the possible locomotion range on Teflon (Pérez-Miles, Perafán & Santamaría, 2015). The locomotion of each individual was recorded using all the experimental conditions in randomized order, with time allowed for rest that spanned at least 48 h between two successive trials. Individuals were marked dorsally, five minutes before the first trial, with water-based, non-toxic ink. Mark positions were on the fovea, the center of the patella, and the tip of the tarsus. These points, together with the light bands in the tibia-metatarsus joint and the points of insertion of each leg on the cephalothorax (coxae), were used as landmarks (Fig. 1). During the trials the temperature was 22.3 °C (± 0.6).

Four fixed video cameras (Sony DCR-H28E) were simultaneously used, within a space of 20 × 32 × 30 cm (Fig. 2). The frame rate was 25 Hz interlaced (50 fps) and we obtained a mean of 50 ± 25 frames per stride; a frequency considered sufficient for this kind of analysis (Ward & Humphreys, 1981; Biancardi et al., 2011). The calibration was done with 17 markers (0.32 cm radius) evenly distributed in three dimensions. The synchronization of the four cameras was obtained by a sound signal and all images were digitized and later used to reconstruct the position of each marker. The measure of error in the calibration system was $0.7\% \pm 0.2$, according to Barros et al. (2006). Orthogonal axes were defined as follows: the direction of x -axis was the main displacement direction, the z -axis was the height with respect to the ground and the y -axis was determined by the right-hand rule (Wu & Cavanagh, 1995).

Center of mass determination

All of the spiders used for kinematic analysis were sacrificed by means of carbon tetrachloride vapor and fixed in glass tubes with alcohol. The cephalothorax together with the abdomen was separated from the body as well as the following right body segments: coxae and trochanters, femora, patellae jointly with tibiae, metatarsi and tarsi. The mass of each segment was determined with an analytical scale (Radwag AS 310/C2). Lengths and diameters (Table 1) were taken by means of an ocular micrometer (Olympus G15x) with a stereo microscope Olympus SZH. Four measurements of the cephalothorax width at the

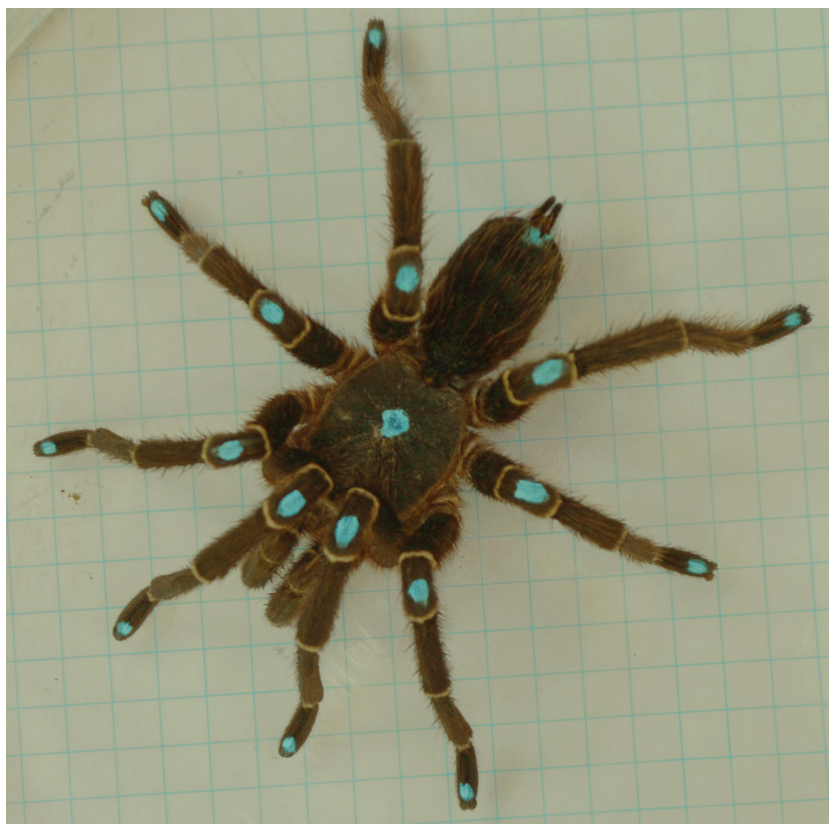


Figure 1 Male *Eupalaestrus weijenberghi*. Light blue marks were used as landmarks.

Full-size  DOI: [10.7717/peerj.7748/fig-1](https://doi.org/10.7717/peerj.7748/fig-1)

level of each coxa pair were taken with a calliper. The distance to the fovea and the insertion of each pair of legs was taken from the clypeus on the medial sagittal line (Table 2).

Each segment, apart from the tarsi, was suspended from at least two points and photographed in static equilibrium (Alexander, 1985) with a Nikon D3200 camera. A fine human hair with a knot tied to a hook on one end and the other attached to the segment with removable glue, was used for this purpose.

Digital pictures were analyzed with the program ImageJ 1.49v (Rasband, 1997-2016). A needle of known length was used to calibrate the pictures. In each picture a straight line was drawn as an extension of the hair through the mooring point and the center of the segment. Next, the pictures of the same segment were overlapped. We recorded the length of the segments (l_{seg}) and the distance from the proximal end to the point where the straight lines cross (L). The average relative position of the center of mass (L_{CoM}) of each segment was calculated as: $L_{CoM}=L/l_{seg}$ (Table 1).

Data processing

All of the recorded trials were viewed and visually analyzed. Replicates were selected for kinematic analysis when spiders travelled in straight lines and without ostensible speed



Figure 2 Experimental set-up.

[Full-size](#)  DOI: [10.7717/peerj.7748/fig-2](https://doi.org/10.7717/peerj.7748/fig-2)

changes. After this filter, the sample size was reduced to 5 spiders ($n = 5$, mass = 5.10 g, 0.68 SD).

Two successive step cycles were analyzed in each trial. An image analysis program (Dvideow 6.3, Campinas University) (Figuroa, Leite & Barros, 2003; Barros et al., 2006) was used to synchronize the recordings and to reconstruct the 3D position of each marker. All of the described landmarks were digitized in this way with two exceptions: first, the tibia-metatarsal joints appeared blurred in the trials on Teflon due to reflections. Therefore, it was possible to digitize them only in trials on glass surfaces. Secondly, the *coxae* were obscured because the insertion points of the legs were rarely seen by more than one camera. In this case eight virtual markers were calculated, according to Biancardi et al. (2011), from the fovea position.

A series of Matlab R2012 (MathWorks, Inc., Natick, MA, USA) routines were built to manage and process the kinematics data. Spatial coordinates of the markers were filtered with a low-pass Butterworth of order 3 and a cut frequency of 6 Hz.

Two multi-segment body models for the spiders were used (Fig. 3). The cephalothorax segment was delimited by the eight *coxae*, while the leg segments were delimited by a pair

Table 1 Measures and inertial parameter of leg segments (mean \pm standard deviation, $n = 12$).

Segment	Leg	Diameter (mm)	Length (mm)	Mass (10^{-2} g)	Center of mass (% from proximal end)	Radius of gyration (mm)	Moment of inertia
Femur	I	2.35 \pm 0.37	14.12 \pm 0.70	71 \pm 16	43.8 \pm 15.9	4.11	1.20
	II		12.91 \pm 0.61	58 \pm 12	51.3 \pm 15.7	3.77	0.82
	III		11.48 \pm 0.63	68 \pm 17	53.6 \pm 8.8	3.36	0.77
	IV		14.13 \pm 0.71	67 \pm 28	55.3 \pm 12.7	3.76	1.14
Patella-tibia	I	2.40 \pm 0.27	16.87 \pm 0.73	65 \pm 12	39.4 \pm 5.6	4.90	1.56
	II		15.11 \pm 0.56	45 \pm 13	29.6 \pm 8.2	4.40	0.87
	III		13.59 \pm 0.49	43 \pm 15	33.0 \pm 6.4	3.80	0.68
	IV		18.52 \pm 0.59	70 \pm 19	38.7 \pm 16.2	5.26	2.02
Metatarsus	I	1.41 \pm 0.16	10.11 \pm 0.58	16 \pm 0.4	55.2 \pm 16.9	2.93	0.22
	II		9.95 \pm 0.54	14 \pm 0.5	53.4 \pm 12.1	2.40	0.18
	III		11.18 \pm 0.32	17 \pm 0.6	48.2 \pm 17.2	3.25	0.26
	IV		16.96 \pm 0.60	36 \pm 23	47.4 \pm 21.9	4.68	1.11
Tarsus	I			10 \pm 0.3			
	II			0.8 \pm 0.3			
	III			0.8 \pm 0.4			
	IV			10 \pm 0.2			

Table 2 Measures of cephalothorax and abdomen (mean \pm standard deviation, $n = 12$). The mass reporter here correspond to the cephalothorax plus the abdomen.**Measures of cephalothorax**

Distance fovea (mm)	10.29 \pm 0.45
Distance leg I (mm)	1.58 \pm 0.37
Distance leg II (mm)	5.79 \pm 0.58
Distance leg III (mm)	11.57 \pm 0.88
Distance leg IV (mm)	15.65 \pm 1.20
Width I (mm)	11.32 \pm 1.73
Width II (mm)	13.99 \pm 0.94
Width III (mm)	13.04 \pm 1.38
Width IV (mm)	9.60 \pm 1.40
Mass (10^{-2} g)	219 \pm 23

of the described landmarks. The first (model A) considers three segments per leg (femur, patella-tibia, tarsus-metatarsus), while the second (model B) includes only two leg segment groupings (femur, and other distal segments together). In both models, the coxa and trochanter were considered together with the cephalothorax and abdomen. Model A was used for analyzing the trials on the glass surface, while model B was used for the analysis of both surfaces (Teflon and glass). The radii of gyration of the segments (Table 1) were calculated by assuming a cylinder shape for the segments (Biancardi et al., 2011). The 3-D position and respective masses of each L_{CoM} with the spatial position of the fovea were used to obtain the frame-by-frame 3-D position of the total body center of mass (b_{CoM}).

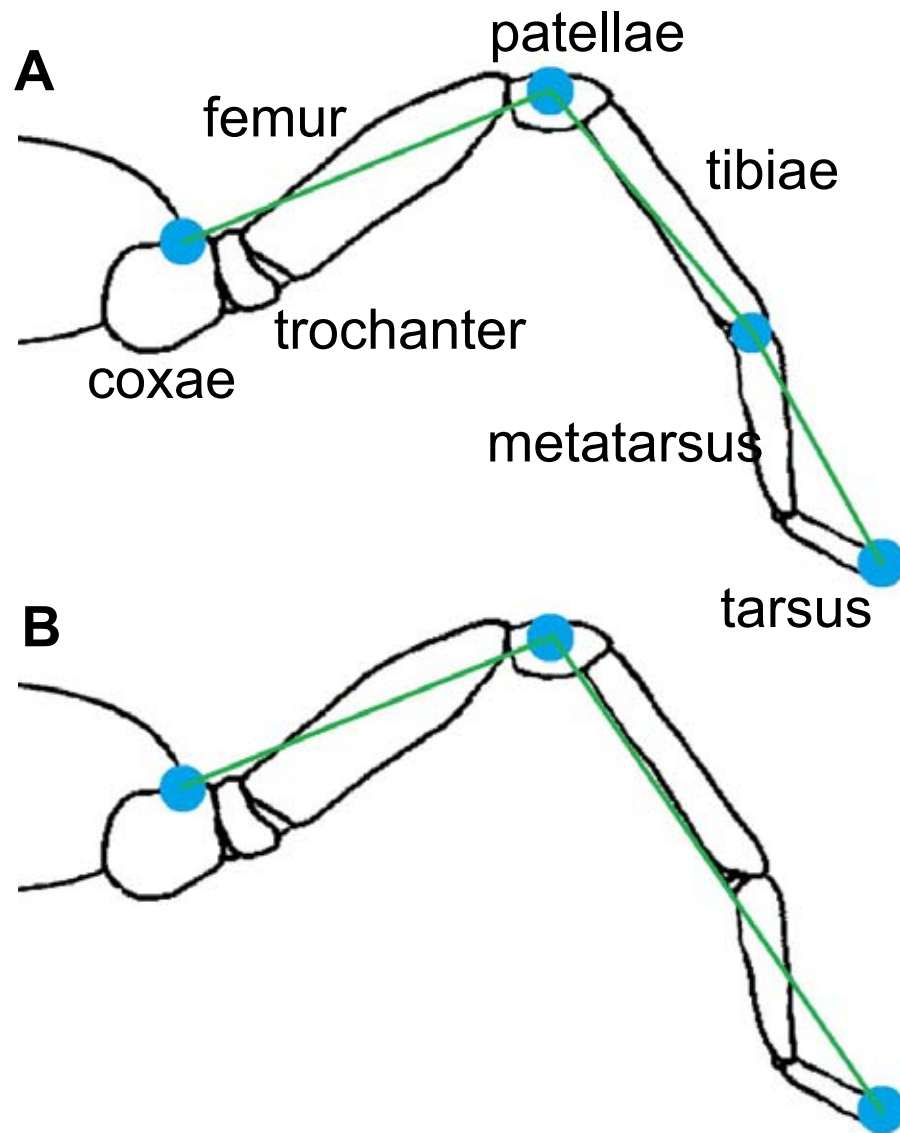


Figure 3 Models of rigid segments of the body of spiders. (A) was used for glass trials and (B) for Teflon.

Full-size  DOI: [10.7717/peerj.7748/fig-3](https://doi.org/10.7717/peerj.7748/fig-3)

The trajectories of b_{CoM} were used to calculate mechanical work measurements and mechanical energies following procedures outlined by *Willems, Cavagna & Heglund (1995)*. The internal work (W_{INT}) is the increase in kinetic energy of the leg segments arising from their speed change with respect to the b_{CoM} . The external work (W_{EXT}) is the increase in kinetic energy of the b_{CoM} with respect to the environment. W_{EXT} was obtained by summing up the positive increments of total energy (E_{TOT}) with respect to time: $E_{TOT} = E_{POT} + E_{KIN.x} + E_{KIN.y} + E_{KIN.z}$, where E_{pot} is the potential energy of the b_{CoM} , $E_{KIN.x}$, $E_{KIN.y}$, and $E_{KIN.z}$ are the forward, lateral, and vertical components of the kinetic energy included in b_{CoM} , respectively. Vertical and horizontal work (W_V , W_H)

components of W_{EXT} were obtained by summing up the positive increments of vertical energy ($E_{POT} + E_{KIN.z}$) and by summing up the positive increments of forward and lateral energy ($E_{KIN.x} + E_{KIN.y}$), respectively. The total mechanical work (W_{TOT}) was computed as the sum of the W_{INT} and W_{EXT} (Cavagna & Kaneko, 1977). Mechanical work was expressed as the mechanical cost of the transport per kilogram of body mass and per unit of distance (i.e., $J\ Kg^{-1}\ m^{-1}$).

For ideal walking gaits, E_{POT} and E_{KIN} changes are out of phase, while for bouncing gaits they are in phase. Percentage congruity (% Cong), which is the proportion of a stride cycle during which the two energies change in the same direction, was computed according to Ahn, Furrow & Biewener (2004). The ability of the body to save mechanical energy through the interchange between E_{POT} and E_{KIN} (energy recovery) was calculated according to Cavagna, Thys & Zamboni (1976).

Different multi-segmented models could affect the determination of the position of the b_{COM} and the estimations of the mechanical work (Pavei et al., 2017). However, the effect of different numbers of limb segments on the b_{COM} trajectory (W_{EXT}) was almost negligible, especially in cases where the limb masses/body mass ratio is small (Table 1). W_{INT} could be more greatly affected by the number of segments (Biancardi et al., 2011).

There were additional parameters estimated from the analysis of the trajectory of b_{COM} . The mean height of vertical displacement of the b_{COM} (H_{COM}) was one these parameters. Speed was determined by the displacement of the b_{COM} in the horizontal plane/time. The relative speed to body length was calculated using measurements for the body length (the sum of cephalothorax and abdomen length). The stride length L_S was defined as horizontal b_{COM} displacement during one stride, while the relative stride length was defined as $L_{SR} = L_S/H_{COM}$. We also estimated the stride frequency (F_S) and the duty factor (D_F is the ratio between the duration of a foot contact interval and the stride duration).

In order to perform the gait analysis the spider was considered to be composed of two successive quadrupeds in series (Root, 1985; Biancardi et al., 2011). The first being L1-R1-L2-R2 and the second L3-R3-L4-R4 (where L and R indicate left and right and the numbering continues sequentially from the first fore-pair of legs). The gait diagram of each quadruped was compared with the theoretical quadrupedal gait diagrams (Hildebrand, 1966; Hildebrand, 1977).

Stride coordination was evaluated by the antero-posterior sequence method (Abourachid, 2003) and considered the sequence of footfalls as pictured in the gait diagram (Fig. 4). The parameters included the time lag between two contralateral feet footfalls measuring temporal coordination within each pair of fore (F) or hind (H) limbs: F_1 (L1-R1), H_1 (L2-R2), F_2 (L3-R3) and H_2 (L4-R4). They also included the time lag between fore and hind feet footfalls on the same side, for leg pair I-II (P_1) and for leg pair III-IV (P_2), all of which were expressed as a percentage of the cycle duration.

All statistical analyses were done using the PAST 3.12 software package (Hammer, Harper & Ryan, 2001). To compare the variables at different experimental conditions, we used a two-way ANOVA statistical analysis for paired values, with the substrate inclinations and surfaces acting as independent factors. The results from the two body models and temporal gait parameters have been compared by *t*-test or univariate ANOVA with a Bonferroni

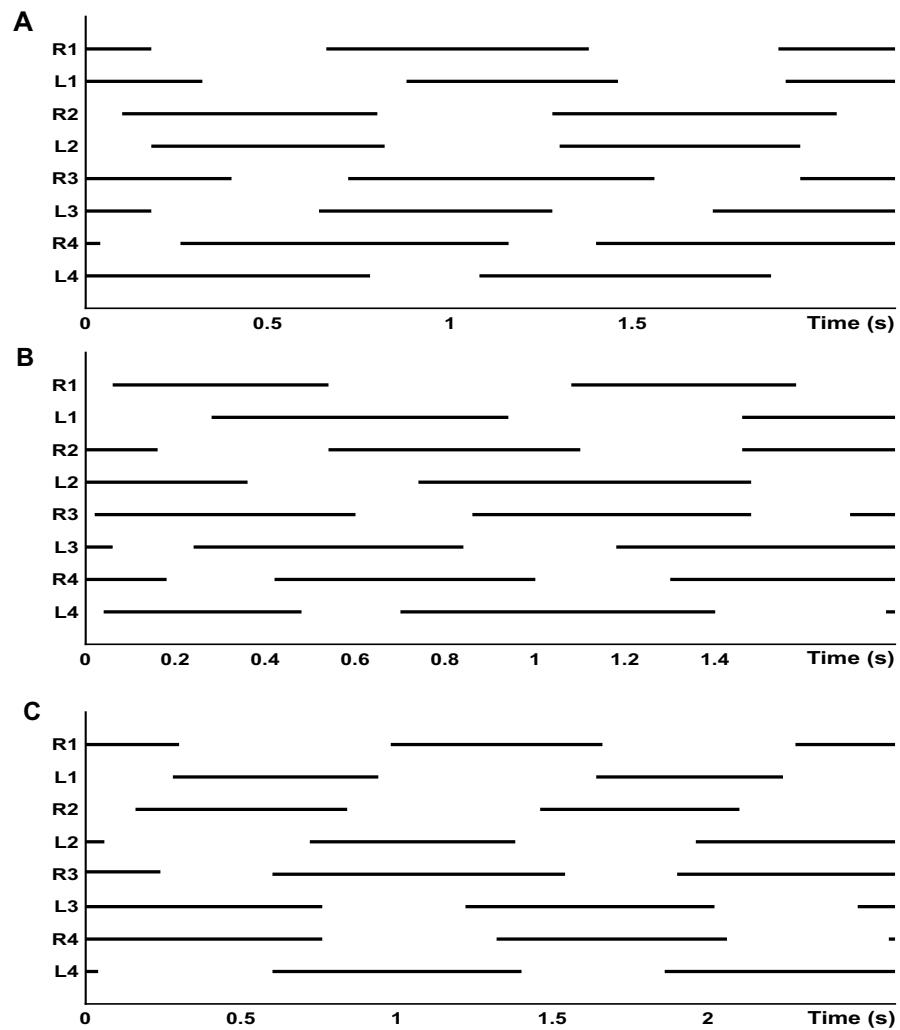


Figure 4 Gait diagram of footfall pattern. (A) Walk-bound in legs I and II (R1 to L2) and diagonal walk in legs III and IV (R3 to L4), recorded on g0. (B) Lateral walk in all legs, recorded on t0. (C) Walk-trot in all legs, recorded on g12.

Full-size  DOI: [10.7717/peerj.7748/fig-4](https://doi.org/10.7717/peerj.7748/fig-4)

post-hoc test. The linear Pearson r coefficient was computed to test the correlation between speed and stride frequency. In all cases the critical p -value was set to 0.05.

To analyze footfall patterns, we performed two principal components analyses. One included all eight legs and the other considered the tarantulas as two independent quadrupeds with the first set including pairs I and II and the second including pairs III and IV.

RESULTS

A total of 40 strides were analyzed, with 10 strides for each experimental condition (g0; g12; t0; t12). All of the raw data are given in a [Supplemental File](#).

Table 3 Results obtained at all experimental condition (mean \pm standard deviation, $n = 5$).

Variable	Glass 0°	Teflon 0°	Glass 12°	Teflon 12°
Speed (cm s ⁻¹)	2.55 \pm 0.90	2.80 \pm 0.62	2.61 \pm 0.59	2.17 \pm 0.63
Relative speed (B_l s ⁻¹)	1.11 \pm 0.38	1.23 \pm 0.29	1.03 \pm 0.37	0.94 \pm 0.25
Duty Factor (D_F)	0.61 \pm 0.01	0.58 \pm 0.04	0.60 \pm 0.05	0.59 \pm 0.04
L_S (cm)	3.04 \pm 0.68	3.53 \pm 0.69	3.17 \pm 0.68	3.31 \pm 0.51
L_{SR}	2.28 \pm 0.56	2.09 \pm 0.44	2.25 \pm 0.23	2.43 \pm 0.28
F_S (s ⁻¹)	0.71 \pm 0.27	0.74 \pm 0.26	0.69 \pm 0.14	0.62 \pm 0.23
H_{CoM} (cm)	1.34 \pm 0.06	1.70 \pm 0.19	1.41 \pm 0.13	1.34 \pm 0.11
W_{EXT} (mJ kg ⁻¹ m ⁻¹)	568 \pm 98	1,202 \pm 1,038	2,135 \pm 128	2,578 \pm 721
W_{INT} (mJ kg ⁻¹ m ⁻¹)	1.1 \pm 0.6	2.6 \pm 0.8	0.9 \pm 0.3	2.4 \pm 1.9
W_{TOT} (mJ kg ⁻¹ m ⁻¹)	569 \pm 98	1,205 \pm 1,038	2,136 \pm 129	2,578 \pm 721
W_V (mJ kg ⁻¹ m ⁻¹)	563 \pm 97	1,205 \pm 1,053	2,137 \pm 129	2,574 \pm 719
W_H (mJ kg ⁻¹ m ⁻¹)	45 \pm 16	95 \pm 40	43 \pm 9	53 \pm 25
Recovery (%)	6.9 \pm 3.8	10.5 \pm 9.3	2.1 \pm 0.7	1.9 \pm 0.7
Percentage congruity (%)	53.05 \pm 7.89	47.74 \pm 1.95		

Speed and gait measurements

The mean speed recorded during the trials was 2.53 cm \times s⁻¹ (0.68 SD), with no significant differences between speeds when trials included varied inclinations or substrates. In [Tables 3](#) and [4](#) we have shown averages that were measured for both the different inclinations and the different substrates with associated statistical comparisons, respectively. Within the observed range of velocities, the stride length (L_S) was almost constant ($r = -0.419$, $p = 0.065$), while the stride frequency (F_S) significantly increased with speed ($r = 0.821$, $p = 0.000009$) ([Fig. 5](#)). The duty factor was always higher than 0.5 for walking gaits and did not show significant differences between different conditions. The same trends could be observed for stride length, stride frequency, and relative stride length ([Tables 3](#) and [4](#)). The height of the center of mass (H_{CoM}) was the only variable affected by the interaction of experimental conditions ($F = 28.14$, $p = 0.006$), caused by a change of the limb posture on Teflon relative to the glass substrate, ranging from a more upright position on level surfaces to a more sprawled one on gradients ([Table 3](#)).

Gait diagrams show four different gaits, sometimes determined by the composition of different patterns between the two quadrupeds ([Fig. 4](#)). Walk-bound was only observed in the anterior quadruped and was characterized by the simultaneous contact of the contralateral feet with a phase shift of about 50% between leg pairs I and II (similar to a quadrupedal bound, without an aerial phase, as seen in [Fig. 4A](#)). For the walk-trot gait the odd limbs of the right side (I and III) move simultaneously with the even limbs of the left side (II and IV), like in a quadrupedal trot, again without an aerial phase. Diagonal and lateral walk patterns are equivalent to their quadrupedal homonym ([Hildebrand, 1966](#); [Abourachid, 2003](#)). The time lags and D_F of each leg pair for different gaits are given in [Table 5](#). The overall D_F of the four leg pairs resulted in significantly different values ($F = 35.105$, $d.f. = 3$, $p < 0.0001$). However, between the two pairs of the anterior quadruped (I and II), and between the two pairs of the posterior quadruped

Table 4 Results of the two-way ANOVA.

Variable	Gradient effect	Substrate effect	Gradient x Substrate
Speed	$F = 0.984; df = 1; p = 0.377$	$F = 0.146; df = 1; p = 0.722$	$F = 1.504; df = 1; p = 0.287$
Duty factor	$F = 0.080; df = 1; p = 0.791$	$F = 1.720; df = 1; p = 0.260$	$F = 0.460; df = 1; p = 0.535$
Stride length	$F = 0.046; df = 1; p = 0.841$	$F = 3.166; df = 1; p = 0.150$	$F = 0.980; df = 1; p = 0.378$
Relative stride length	$F = 1.000; df = 1; p = 0.374$	$F = 0.001; df = 1; p = 0.977$	$F = 3.380; df = 1; p = 0.140$
Stride frequency	$F = 1.463; df = 1; p = 0.293$	$F = 0.138; df = 1; p = 0.729$	$F = 0.281; df = 1; p = 0.624$
b_{COM} height	$F = 4.108; df = 1; p = 0.113$	$F = 24.874; df = 1; p = 0.008$	$F = 28.139; df = 1; p = 0.006$
External work	$F = 19.260; df = 1; p = 0.012$	$F = 4.645; df = 1; p = 0.097$	$F = 0.096; df = 1; p = 0.772$
Internal work	$F = 9.041; df = 1; p = 0.040$	$F = 33.972; df = 1; p = 0.004$	$F = 1.677; df = 1; p = 0.265$
Total work	$F = 19.204; df = 1; p = 0.012$	$F = 4.672; df = 1; p = 0.097$	$F = 0.096; df = 1; p = 0.773$
Vertical work	$F = 19.191; df = 1; p = 0.012$	$F = 4.506; df = 1; p = 0.101$	$F = 0.108; df = 1; p = 0.759$
Horizontal work	$F = 5.642; df = 1; p = 0.076$	$F = 17.760; df = 1; p = 0.014$	$F = 4.090; df = 1; p = 0.113$
Recovery	$F = 5.622; df = 1; p = 0.077$	$F = 2.038; df = 1; p = 0.227$	$F = 1.656; df = 1; p = 0.268$

Notes.

The bold text indicates results with significant differences, $p < 0.05$.

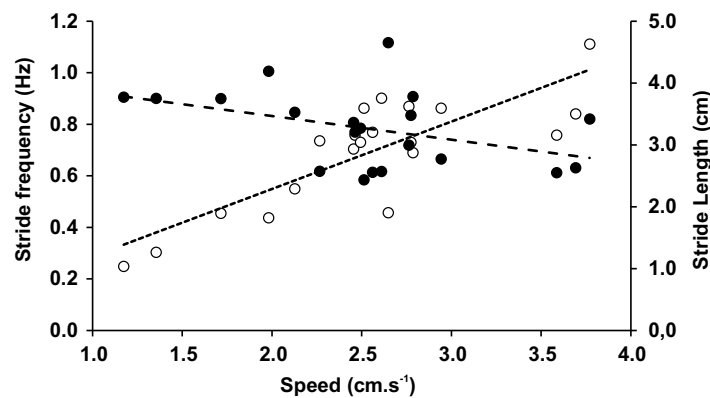


Figure 5 Stride frequency (open circles) and stride length (full circles) on function of speed. The dotted lines are the linear adjustments.

Full-size DOI: [10.7717/peerj.7748/fig-5](https://doi.org/10.7717/peerj.7748/fig-5)

(III and IV), the multiple comparison methods resulted in non-significant differences. Bonferroni comparisons of DFF1-DFH1 and DFF2-DFH2 resulted in p -values of 0.238 and 1.000, respectively. All other comparisons gave significant results including Bonferroni comparisons of DFF1-DFF2 and DFH1-DFH2, with significance tests for both with a result of $p < 0.0001$. The pooled D_F of the two quadrupeds again highlighted significant differences (DFP1-DFP2, $t = -9.799$, d.f. = 78, $p < 0.0001$).

In the principal component analysis considering the octopod (Fig. 6), PC1 explained the 36.8% of the variance, with the highest loadings of H_11 (0.80) and P_11 (0.53). PC2 explained the 21.8% of the variance, with the highest loadings of F_12 equalling 0.65 and F_11 reaching 0.63. No significant associations were found between the experimental conditions and the variables (duty factors and time lags) (Fig. 6A). However, the time lags of pairs I and II (F_11 , H_11 , P_11) tended to lean toward the positive values of PC1. Duty factors associated with

Table 5 (A) Time lags and (B) duty factors of each leg pair for different gaits (mean \pm standard deviation, $n = 5$).

A	F_{I1}	H_{I1}	P_{I1}	F_{I2}	H_{I2}	P_{I2}
Diagonal	0.38 ± 0.13	0.51 ± 0.19	0.45 ± 0.16	0.31 ± 0.15	0.54 ± 0.14	0.45 ± 0.07
Lateral	0.40 ± 0.11	0.72 ± 0.54	0.72 ± 0.37	0.38 ± 0.18	0.55 ± 0.15	0.57 ± 0.12
Trot	0.42 ± 0.15	0.51 ± 0.09	0.49 ± 0.14	0.44 ± 0.09	0.51 ± 0.04	0.43 ± 0.08
Bound	0.14 ± 0.08	0.23 ± 0.21	0.44 ± 0.08			
B	D_{FFI1}	D_{FHI1}	D_{FPI1}	D_{FFI2}	D_{FHI2}	D_{FPI2}
Diagonal	0.53 ± 0.06	0.61 ± 0.09	0.56 ± 0.08	0.68 ± 0.08	0.65 ± 0.07	0.67 ± 0.06
Lateral	0.49 ± 0.04	0.58 ± 0.10	0.52 ± 0.08	0.66 ± 0.06	0.71 ± 0.04	0.69 ± 0.04
Trot	0.50 ± 0.02	0.51 ± 0.04	0.52 ± 0.04	0.63 ± 0.07	0.65 ± 0.04	0.64 ± 0.04
Bound	0.53 ± 0.04	0.60 ± 0.04	0.59 ± 0.04			

these time lags were placed toward the negative values of PC2. Conversely, posterior leg pairs did not show similar tendencies. Temporal variables distinguished the two types of gaits (Fig. 6B). Walk-trot gaits using four leg pairs were observed in the negative quadrant of PC1 and positive quadrant of PC2 while walk-bound gait patterns as seen in pairs I and II were observed in the negative quadrants of PC1 and PC2.

In the principal component analysis considering quadrupeds (Fig. 7), PC1 explained 35.2% of the variance, with the highest loadings being H_1 (0.85) and P_1 (0.50). PC2 explained the 25.6% of the variance, with F_1 (0.77) being the highest loading, followed by duty factors. The anterior quadruped showed lower values than the posterior quadruped of PC2; consequently a t -test was performed to test the differences between these components. Significant differences were found between the anterior and posterior quadrupeds ($t = -3.02$, $p = 0.01$).

Mechanical work

External work (W_{EXT}) accounted for the largest part of the total mechanical work (W_{TOT}), while the internal work component only contributed to less than 1% of W_{TOT} (Tables 3 and 4). The increase of the gravitational potential energy due to climbing explains the significant differences between W_V , W_{EXT} , and W_{TOT} detected on gradients. The internal work (W_{INT}) was 10% to 20% higher on level surfaces than on gradients, regardless of the type of surface tested ($F = 9.041$, $p = 0.040$). The horizontal work (W_H) was significantly higher on Teflon than glass ($F = 17.760$, $p = 0.014$). The % Cong produced intermediate values (mean 51.7%) between vaulting and bouncing gaits. Recovery was lower on gradients than on level surfaces, but calculated differences were not significant (Tables 3 and 4).

The two models produced different values for internal work, which was generally overestimated by the simplified model B (31%). However, the differences were not statistically significant (W_{INT} : $t = 0.775$, $d.f. = 8$, one-tail $p = 0.230$). Model B produced a slight overestimation (1.46%) for vertical work, and therefore also external work, with no significant effects on the variable means (W_V and W_{EXT} : $t = 0.133$, $d.f. = 8$, one-tail $p = 0.449$). Due to the small contribution of internal work, the effect on the total work was similar to the latter (W_{TOT} : $t = 0.136$, $d.f. = 8$, one-tail $p = 0.447$). Horizontal work and

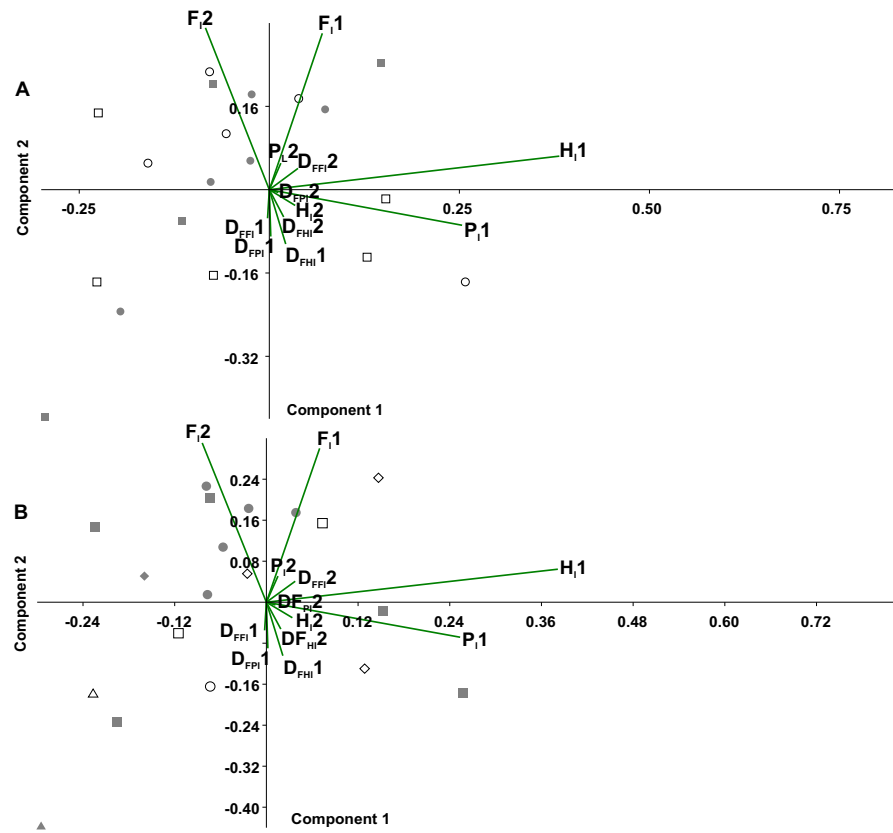


Figure 6 Principal component analysis of temporal variables. Time lag of the pair legs I (F_{I1}), of pair legs II (H_{I1}), pair III (F_{I2}) and IV (H_{I2}); time lag of ipsilateral legs, pair I–II (P_{I1}), and between pair III–IV (P_{I2}); the duty factor of pair of legs I (D_{FFI1}), pair II (D_{FHI1}), III (D_{FFI2}) and IV (D_{FHI2}), ipsilateral of the pairs I–II (D_{FPI1}), and the III–IV (D_{FPI2}). (A) Experimental condition (full squares— g_0 , open circles— g_{12} , full circles— t_0 , open squares— t_{12}). (B) Gait patterns quadrupeds (full triangle—bound diagonal, open triangle—bound trot, full circles—trot trot, full squares—diagonal diagonal, full diamonds—lateral lateral, open squares—trot diagonal, open diamonds—trot lateral, open circle—diagonal trot).

Full-size [DOI: 10.7717/peerj.7748/fig-6](https://doi.org/10.7717/peerj.7748/fig-6)

recovery were not affected and the mean differences between the two were less than 0.5%, while the p -values of the t -test were nearly one.

DISCUSSION

Gait pattern

Speed changes made by legged animals can be obtained by adjusting the stride frequency and stride length (Cavagna *et al.*, 1988). In researching ants, Zollikofer (1994) hypothesized that long legged arthropods would employ longer strides to go faster. Other authors pointed at F_S as the main determinant of speed changes in Coleoptera, Carabidae, and cockroaches (Evans, 1977; Ting, Blickhan & Full, 1994). In *E. weijenberghi*, we identified the F_S values to be the main determinants of speed changes, at least within the limited range studied here. This result agrees with previous findings in other tarantulas (Anderson & Prestwich, 1985; Booster *et al.*, 2015). However, in females of *G. anthracina*, L_S gradually increased

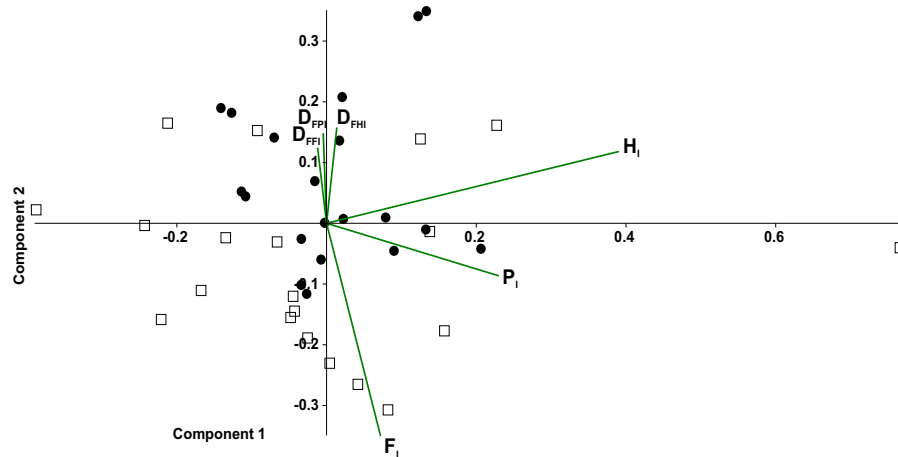


Figure 7 Principal component analysis of temporal variables considering the tarantulas as two quadrupeds. Time lag of fore legs (F_I), of hind legs (H_I); ipsilateral (P_I); and duty factor of the fore legs (D_{FFI}), hind legs (D_{FHI}) and ipsilateral (D_{FPI}). Gait of pair legs I and II (open squares) and pair legs III and IV (full circles).

Full-size DOI: 10.7717/peerj.7748/fig-7

within a speed range comparable to that observed in *E. weijenberghi* (Biancardi et al., 2011). In general, animals with exoskeletons are forced to modify the F_S to change speed. The hardness of the skeletal components makes it difficult to modify L_S through the participation of other body parts, which also happens in animals with endoskeletons (Griffin, Main & Farley, 2004). Considering that the F_S is related to muscular work (Heglund & Taylor, 1988) and limited by the muscular physiology (Alexander, 2003), higher maximum speeds are achieved by spider species (or genders, in the case of sexual dimorphism) with longer legs (Grossi & Canals, 2015; Grossi et al., 2016a).

E. weijenberghi, did not significantly change gait, speed, F_S or D_F while moving on a slope. Other species will adapt at least a subset of those parameters on an incline (Gabaldón, Nelson & Roberts, 2004; Seidl & Wehner, 2008; Andrada et al., 2013; Birn-Jeffery & Higham, 2014; Wöhrl, Reinhardt & Blickhan, 2017). The presence of leg adhesive setae (claw tufts and scopulae) could increase the friction between the foot and the substrate, consequently reducing the necessity of extra muscular work on an incline (Pérez-Miles, Perafán & Santamaría, 2015).

Alternate tripodal and quadrupedal patterns, such as the walk-trot, have already been described in crabs (Blickhan & Full, 1987), cockroaches running at low speed (Ting, Blickhan & Full, 1994), a Caraboctonidae scorpion, an agelenidae spider (Spagna & Peattie, 2012; Figs. 8A–8B), and tarantulas at different velocities (Biancardi et al., 2011). For *G. anthracina*, several gaits were observed, including the walk-trot combined with a lateral walk at low speed, a diagonal walk at medium speed, and walk-trot combined with diagonal walk at high speed (Figs. 8C–8E). Walk-like and trot-like gaits are broadly defined in the symmetrical gait category (Hildebrand, 1966; Abourachid, 2003). An asymmetrical walk-bound gait has also been infrequently observed but only for the anterior quadruped

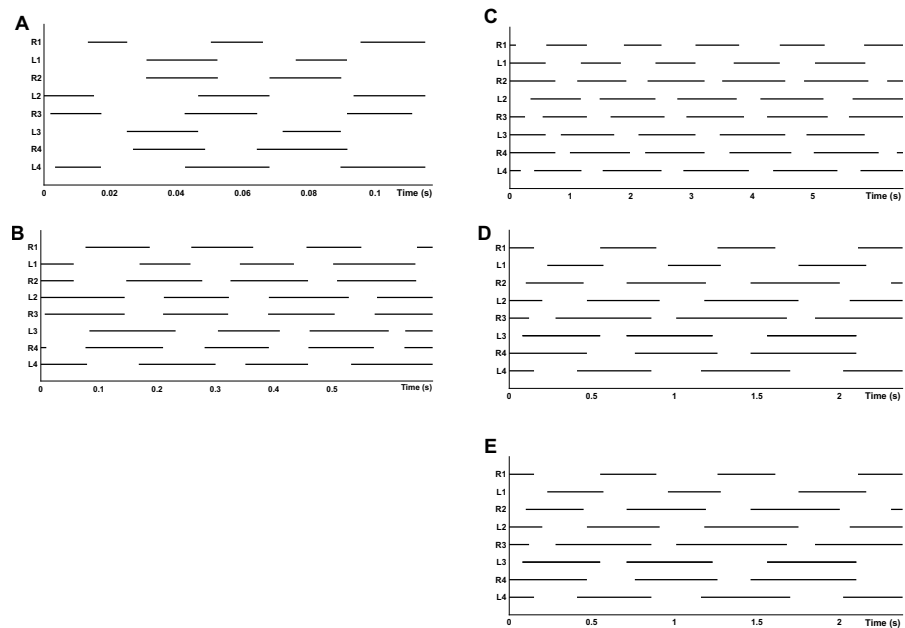


Figure 8 Gait diagram of different species. (A) *Hololena adnexa* (Araneae, Agelenidae) modified from Spagna & Peattie (2012); (B) *Hadrurus arizonensis* (Scorpiones, Iuridae) modified from Root (1985), and (C–E) *G. anthracina* at three speeds modified from Biancardi et al. (2011).

Full-size  DOI: 10.7717/peerj.7748/fig-8

(pairs I and II). All of these gaits agree with the expected time-lag values proposed by Abourachid (2003).

Rapid and intermittent movements were reported, as is commonly observed in theraphosids (Shillington & Peterson, 2002; Grossi et al., 2016b), but the sequences we selected were straight trajectories and at nearly constant speed. Our results agree with those of Biancardi et al. (2011), reaching the conclusion that spider locomotion patterns are complex and do not appear to show rigid neural control. This plasticity enables rapid corrections of locomotion patterns on irregular terrains.

According to the PCA results, the observed patterns of locomotion were characterized by variations of time lags of pairs I, II, and III versus the variations of duty factors. Pair I has both mobility and exploratory functions (Anderson & Prestwich, 1985; Blickhan & Barth, 1985; Foelix, 2011). The exploratory function implies less time of contact with the substrate and this could partially explain the differences in D_F values between the forelimbs and hind limbs.

In mammals, the fore limbs support a great proportion of the total weight due to the weight of the head which produces a higher D_F for the fore limbs versus the posterior limbs (Maes et al., 2008). Our results show a more restricted pattern in the posterior quadruped probably due to the role of pairs III and IV in supporting the body weight of the tarantula. Furthermore, center of mass of the tarantula's body is located between the insertion of legs III and IV, just behind the fovea (Biancardi et al., 2011). Anterior legs show more versatility, which can be attributed to their involvement in exploratory

functions and driving displacements. Traditionally, D_F was the parameter used to analyze locomotory patterns (Farley, Glasheen & McMahon, 1993; Alexander, 2003), while the study of the anterior-posterior sequence is a more recent development (Abourachid, 2003). The principal component analysis provided evidence that both approaches were important to understand gait coordination.

Mechanical work and efficiency

In different species that have been studied, such as cockroaches (Full & Tu, 1990; Full & Tu, 1991; Kram, Wong & Full, 1997; Weihmann, Brun & Pycroft, 2017), crabs (Blickhan & Full, 1987), quadruped mammals (Heglund et al., 1982), and bipeds (Saibene & Minetti, 2003) mechanical work is quite constant and independent from body mass, body shape, number of legs, or skeletal type (Full & Tu, 1990). Tarantulas seem to be the exception to this rule with the external work in *E. weijenberghi* being about half of that reported for other species, which is in agreement with the observation of Biancardi et al. (2011) for *G. anthracina*. Possibly the hydraulic system of arachnids, or elastic mechanisms present in the distal joints of tarantulas, are involved in the extension of legs and related to this difference (Sensenig & Shultz, 2003).

Females of the *E. weijenberghi* species do not move more than 40 cm away from the entrance of their respective burrows (Álvarez, Perafán & Pérez-Miles, 2006), while adult males walk incessantly in order to search for females (Pérez-Miles et al., 2005). The low magnitude of mechanical energy involved in locomotion would facilitate long movements by males without the need for feeding (Pérez-Miles et al., 2005). Indeed, there is a relationship between the mechanical work of locomotion and the metabolic energy expenditure. A low metabolic cost of transport is one of the characteristics associated with the lifestyle of wandering male spider (Grossi et al., 2016a). However, the low cost determined here is an absolute value, influenced by the low body mass of wandering males with respect to females. When comparing the per unit body mass, the cost of transport of smaller individuals is higher than that of larger ones and therefore their mechanical efficiency is lower. Nevertheless, the optimization of cost and efficiency is not a unique determinant of locomotion, and in some cases, when the cardiovascular or respiratory system are not performing well, inefficient yet economic (in absolute terms) locomotion patterns may be preferred (e.g., Bona et al., 2017).

The increment of W_{EXT} during locomotion on a gradient was caused by the additional W_V , and there were proportionally similar observations made in humans (Minetti, Ardigo & Saibene, 1993; Gottschall & Kram, 2006). This increment was slightly lower on Teflon than on glass. On Teflon the W_H was lower, probably due to the lower level of adhesion associated with the surface (Pérez-Miles, Perafán & Santamaría, 2015), which could explain the difference with glass on gradients.

During horizontal displacements, the variations observed for $E_{KIN,x}$ were much lower than the variations of $E_{KIN,y}$, found in other arachnids (Sensenig & Shultz, 2006; Biancardi et al., 2011). This implies a low energy recovery (Gottschall & Kram, 2006) and therefore a greater energy expenditure by muscles.

According to [Moya-Laraño et al. \(2008\)](#), pendulum mechanics drove the morphological evolution of spiders. In bipeds (mammals and birds), the maximum recovery during horizontal displacement varies between 60–80%, while in quadruped mammals this figure varies between 30–65% ([Cavagna, Heglund & Taylor, 1977](#); [Saibene & Minetti, 2003](#); [Griffin, Main & Farley, 2004](#)). However, in arthropods the recovery never exceeds values between 7–19% ([Full & Tu, 1990](#); [Full & Tu, 1991](#); [Biancardi et al., 2011](#); [Reinhardt & Blickhan, 2014](#)), and our values (6.9–10.5%) fall in this latter range. The number of locomotor limbs probably influences the inverted pendulum mechanics, as highlighted by the average values of % Cong (47.8–53.0%). Percentage congruity was more similar to that of walking frogs ([Ahn, Furrow & Biewener, 2004](#)) than that of grounded running ants ([Reinhardt & Blickhan, 2014](#)). In fact, the leg posture of some walking frogs is actually similar to that of tarantulas.

The internal work done by *E. weijenberghi* accounted for 0.2% of the total work, which was lower than the 11% recorded in *G. anthracina* and the 9–15% detected in opilions ([Sensenig & Shultz, 2006](#)). Two factors could explain this difference: (i) the speed of the body segments and (ii) the relative mass of the limbs in relation to the body. Any increase of segment speed would imply a higher stride frequency and, consequently, a higher relative speed of locomotion. W_{INT} also increases with the speed ([Fedak, Heglund & Taylor, 1982](#); [Minetti, 1998](#); [Biancardi et al., 2011](#)).

According to the dynamic similarity hypothesis ([Alexander & Jayes, 1983](#)), the Froude number is a dimensionless measure of relative speed and is used to compare the locomotion of individuals and species of different sizes using the following equation:

$$Fr = v^2 g^{-1} l^{-1},$$

where v is velocity, g is the acceleration due to gravity, and l is the characteristic length between the pivot point on the ground and the arc of swing. In ghost crabs, a species with leg segmentation and posture similar to tarantulas, the knee joint (carpopodite-meropodite joint) was used as a reference ([Blickhan & Full, 1987](#)). Other authors suggested using the height of the coxa joint from the ground in a normal standing position ([Irschick & Jayne, 2000](#); [Biancardi et al., 2011](#)). In order to compare the results obtained for *E. weijenberghi* with *G. anthracina*, we followed the latter suggestion. Even when the absolute locomotion speeds of *E. weijenberghi* were much lower than those of females of *G. anthracina*, the equivalent speeds, which were expressed as number of Froude, were similar.

Moreover, the relative limb masses of males of the *E. weijenberghi* species were higher than those of the female *G. anthracina* spiders (25% vs 13% of body weight). Therefore, a higher relative W_{INT} should be expected in the former species yet none of these factors seem to explain the large difference in W_{INT} between the two species. Contrary to what was discovered by [Minetti, Ardigo & Saibene \(1993\)](#) and [Minetti \(1998\)](#), the W_{INT} decreased with the gradient. We found slight variations in accordance with small decreases in the stride frequency on glass as well as on Teflon. As expected, the W_{INT} was proportional to the F_S on both the horizontal and inclined surfaces ([Minetti & Saibene, 1992](#); [Minetti, 1998](#)).

The lower static friction found by [Pérez-Miles, Perafán & Santamaría \(2015\)](#) on Teflon relative to glass probably explains the increased values for the horizontal work we found for the Teflon surfaces. An increment of the mean height of the center of mass was also observed during locomotion on level Teflon surfaces. An upright posture facilitates the contact between adhesive structures and the substrate in geckos ([Higham et al., 2015](#)). The hunting spider *Cupiennius salei* adopts a posture on vertical surfaces in order to improve the adhesion ([Niederegger & Gorb, 2006](#)). In tarantulas an upright posture could help maintain contact between claw tufts and tarsal claws and the surface because those features are the ones most heavily used during level locomotion ([Pérez-Miles, Perafán & Santamaría, 2015](#)).

Contrary to these reports, spiders on inclines assumed a more sprawled position on Teflon than on glass, increasing the supporting area and consequently the stability ([Ting, Blickhan & Full, 1994](#); [Weihmann & Blickhan, 2009](#); [Weihmann, 2013](#)). [Pérez-Miles, Perafán & Santamaría \(2015\)](#) observed that in static positive gradients legs I and II interacted with claw tufts while legs IV also touched surfaces with the distal scopulae. [Birn-Jeffery & Higham \(2014\)](#) suggested that animals usually extend their legs or change the pushing mode on gradient surfaces to optimize the force used to overcome gravity ([Alexander, 2003](#)). Our results suggest that *E. weijenberghi* needs to increase stability as adhesion diminishes. Despite the implication that adhesion is a costly mechanism of attachment and detachment ([Wolff, Nentwig & Gorb, 2013](#)), these costs are probably less than those involved in adopting a crouched posture and using extra muscular force.

The adhesion in Theraphosidae is produced by specialized setae located on the ventral face of the distal segments of the limbs. These setae are arranged on claw tufts and tarsal scopulae ([Pérez-Miles, 1994](#)). [Pérez-Miles, Perafán & Santamaría \(2015\)](#) and [Pérez-Miles et al. \(2017\)](#) proposed that different adhesive setae produce adhesion when limbs push or pull, according to the part of the limb in question and the orientation of the microtrichiae on the setae. When tarantulas climb, forelimbs pull and adhere to surfaces using distal claw tufts, while hind limbs push and adhere using the scopulae. A similar mechanism has been observed in cockroaches ([Clemente & Federle, 2008](#)). The contact phase of each step is composed of a braking phase followed by a second phase of propulsion ([Griffin, Main & Farley, 2004](#); [Spagna, Valdivia & Mohan, 2011](#)). We observed that during the braking phase, the forelimbs were in contact with the proximal tarsi (scopulae), producing pushing adhesion, while the hind limbs produced pulling adhesion by contacting surfaces with the distal claw tufts. Conversely, during the propulsion phase, the contacts and adhesion mechanisms worked in reverse, with spiders pushing with their hind limbs and pulling with their forelimbs. During locomotion on a positive gradient, forelimbs should maximize the pulling adhesion by increasing the contact time of the apical tarsi with the substrate, while the hind limbs should increase the contact time with the scopulae to fully utilize the benefits of pushing adhesion ([Fig. 9](#)). Adhesive setae have a high adaptive value for the locomotion of spiders in natural environments ([Lapinski, Walther & Tschapka, 2015](#); [Pérez-Miles et al., 2017](#)). In fact, the adhesive structures of adult *E. weijenberghi* showed sex-based differences in the static friction angle due to the intense locomotor activity of males ([Pérez-Miles, Perafán & Santamaría, 2015](#)).

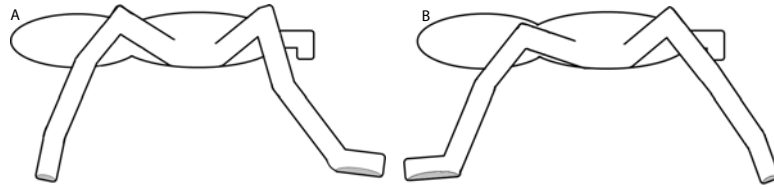


Figure 9 Contact phase of each step. The gray area shows the contact surface of the tarsi. (A) Braking phase: forelimbs produce push adhesion with proximal tarsi, and hind limbs produce pull adhesion with distal claw tufts. (B) Propulsion phase: forelimbs produce pull adhesion with proximal tarsi, and hind limbs produce push adhesion with distal claw tufts.

Full-size  DOI: [10.7717/peerj.7748/fig-9](https://doi.org/10.7717/peerj.7748/fig-9)

Body models

The center of mass of a multi-segmented body varies by changing the relative positions of the segments and is the weighted sum of the centers of mass of each segment in every instance (*Zatsiorsky, 2002*). Almost all L_{CoM} were located close to the geometric center of a cylinder of the same dimension, except for the segment composed of the patella and tibia, probably because the patella is wider than the tibia. When considering variables affected by the movement of the distal body segments, the choice of an adequate multi-segmented model is essential. The two body models of *E. weijenberghi* built in this study have been compared for one experimental condition.

The internal work was indeed the most influenced variable. Reducing the number of leg segments can affect the variation of linear and/or rotational kinetic energy. However, this simplification is necessary to analyze the movements without increasing the number of cameras and, consequently, the processing time (*Allard, Blanche & Aissaoui, 1995*).

Finally, it should be noted that, due to methodological limitations in this research, the fovea position was used as a proxy of the true center of mass of the cephalothorax and abdomen (*Biancardi et al., 2011*). In *Grammostola anthracina* no significant differences were found in the W_{EXT} , when calculated from the fixed position of a single marker on the fovea versus when it was calculated from the usual weighted position of the centers of mass of all the body segments (*Biancardi et al., 2011*). In humans it has been shown that, compared to direct dynamic records, W_{EXT} could be overestimated by 13% using body models formed by eleven or fourteen segments, and by 16% using a single marker close to the static center of mass (*Pavei et al., 2017*). In the same investigation it has been shown that the W_{INT} was not affected by the different research techniques that involved different calculations to get the b_{CoM} (*Pavei et al., 2017*). The estimations of the vertical, external, and total work differed less than 2% between the two models employed. We consider that both of the models proposed in this research are appropriate to perform a rigorous kinetic analysis in arachnids.

CONCLUSIONS

E. weijenberghi locomotion occurs as a variety of different gait patterns. Nevertheless, the most frequently used gait was a walk-trot, similar to the vertebrate trot, but without the flight phase. Time lags and duty factors were consistent between the gaits and provided enough

information to differentiate between the roles of the two different limb groups. Indeed, the spider octopedal patterns can be interpreted as the combination of two quadrupeds in series; the anterior mainly steers the movement, while the posterior supports much of the body mass of the arachnid.

The total mechanical work to move one unit of mass a unit distance was largely composed by external work, which in turn was mainly determined by a vertical component dedicated to raising the center of mass against gravity. Horizontal work was disproportionately smaller, determining a very small amount of energy recovery.

With respect to locomotion on inclined surfaces, the changes in mechanical work were in line with those observed in others animals, but these similarities did not extend to values for duty factor, speed, or frequency. While on inclined and slippery surfaces where the internal and horizontal work was greater, spiders adopted postural changes to increase the support area and stability.

ACKNOWLEDGEMENTS

The authors thank G Bermúdez and M Zarucki for their valuable contribution, A Duarte for his assistance in some of the experiments, and Carlos Perafán and an anonymous reviewer for their valuable suggestions and critics.

ADDITIONAL INFORMATION AND DECLARATIONS

Funding

This work was supported by a grant from ANII (Uruguay). The funders had no role in study design, data collection and analysis, decision to publish, or preparation of the manuscript.

Grant Disclosures

The following grant information was disclosed by the authors:
ANII (Uruguay).

Competing Interests

The authors declare there are no competing interests.

Author Contributions

- Valentina Silva-Pereyra conceived and designed the experiments, performed the experiments, analyzed the data, prepared figures and/or tables, authored or reviewed drafts of the paper, approved the final draft.
- C Gabriel Fábrica conceived and designed the experiments, performed the experiments, analyzed the data, approved the final draft.
- Carlo M. Biancardi conceived and designed the experiments, analyzed the data, prepared figures and/or tables, authored or reviewed drafts of the paper, approved the final draft.
- Fernando Pérez-Miles conceived and designed the experiments, performed the experiments, analyzed the data, authored or reviewed drafts of the paper, approved the final draft.

Data Availability

The following information was supplied regarding data availability:

Voucher specimens of adult meles *Eupalaestrus weijenberghi* (Thorell, 1894), Canelones, Salinas, Uruguay (34°45'51.34"S 55°52'49.46"W), Mar. 2–3 2013, F.G. Costa collector, were deposited in Arachnological Collection of the Facultad de Ciencias, Universidad de la República, FCE-MY:1563-1571, 1573-1575.

Supplemental Information

Supplemental information for this article can be found online at <http://dx.doi.org/10.7717/peerj.7748#supplemental-information>.

REFERENCES

- Abourachid A. 2003.** A new way of analysing symmetrical and asymmetrical gaits in quadrupeds. *Comptes Rendus Biologies* **326**:625–630
DOI [10.1016/S1631-0691\(03\)00170-7](https://doi.org/10.1016/S1631-0691(03)00170-7).
- Ahn AN, Furrow E, Biewener AA. 2004.** Walking and running in the red-legged running frog, *Kassina maculata*. *Journal of Experimental Biology* **207**(3):399–410
DOI [10.1242/jeb.00761](https://doi.org/10.1242/jeb.00761).
- Alexander RM. 1985.** Mechanics of posture and gait of some large dinosaurs. *Zoological Journal of the Linnean Society* **83**:1–25 DOI [10.1111/j.1096-3642.1985.tb00871.x](https://doi.org/10.1111/j.1096-3642.1985.tb00871.x).
- Alexander RM. 1999.** *Energy for animals*. Oxford: Oxford University Press.
- Alexander RM. 2003.** *Principles of animal locomotion*. Princeton: Princeton University Press.
- Alexander RM, Jayes AS. 1983.** A dynamic similarity hypothesis for the gaits of quadrupedal mammals. *Journal of Zoology* **201**:135–152
DOI [10.1111/j.1469-7998.1983.tb04266.x](https://doi.org/10.1111/j.1469-7998.1983.tb04266.x).
- Allard P, Blanchi JP, Aissaoui R. 1995.** Bases of three-dimensional reconstruction. In: Allard P, Stokes IAF, Blanchi JP, eds. *Three-dimensional analysis of human movement*. Champaign: Human Kinetics, 19–40.
- Álvarez L, Perafán C, Pérez-Miles F. 2006.** At what time, for what distance, and for how long does the tarantula *Eupalaestrus weijenberghi* (Araneae, Theraphosidae) leave its burrow during the mating season? *Arachnology* **17**:152–154
DOI [10.13156/arac.2006.17.3.152](https://doi.org/10.13156/arac.2006.17.3.152).
- Anderson JF, Prestwich KN. 1985.** The physiology of exercise at and above maximal aerobic capacity in a theraphosid (tarantula) spider, *Brachypelma smithi* (F.O. Pickard-Cambridge). *Journal of Comparative Physiology* **B155**:529–539
DOI [10.1007/BF00694442](https://doi.org/10.1007/BF00694442).
- Andrada E, Mämpel J, Schmidt A, Fischer MS, Karguth A, Witte H. 2013.** From biomechanics of rats' inclined locomotion to a climbing robot. *International Journal of Design & Nature and Ecodynamics* **8**(3):192–212 DOI [10.2495/DNE-V8-N3-192-212](https://doi.org/10.2495/DNE-V8-N3-192-212).
- Barros RML, Russomano TG, Brenzikofer R, Figueroa PJ. 2006.** A method to synchronise video cameras using the audio band. *Journal of Biomechanics* **39**:776–780
DOI [10.1016/j.jbiomech.2004.12.025](https://doi.org/10.1016/j.jbiomech.2004.12.025).

- Biancardi CM, Fábrika CG, Polero P, Loss JF, Minetti AE. 2011.** Biomechanics of octopedal locomotion: kinematic and kinetic analysis of the spider *Grammostola mollicoma*. *Journal of Experimental Biology* **214**:3433–3442 DOI [10.1242/jeb.057471](https://doi.org/10.1242/jeb.057471).
- Birn-Jeffery AV, Higham TE. 2014.** The scaling of uphill and downhill locomotion in legged animals. *Integrative and Comparative Biology* **54**(6):1159–1172 DOI [10.1093/icb/icu015](https://doi.org/10.1093/icb/icu015).
- Blackledge TA, Scharff N, Coddington JA, Szuts T, Wenzel JW, Hayashi CY, Agnarsson I. 2009.** Reconstructing web evolution and spider diversification in the molecular era. *Proceedings of the National Academy of Sciences of the United States of America* **106**:5229–5234 DOI [10.1073/pnas.0901377106](https://doi.org/10.1073/pnas.0901377106).
- Blickhan R, Barth FG. 1985.** Strains in the exoskeleton of spiders. *Journal of Comparative Physiology. A, Sensory, Neural, and Behavioral Physiology* **157**:115–147 DOI [10.1007/BF00611101](https://doi.org/10.1007/BF00611101).
- Blickhan R, Full RJ. 1987.** Locomotion energetics of the ghost crab: II. Mechanics of the centre of mass during walking and running. *Journal of Experimental Biology* **130**:155–174.
- Bona RL, Bonezi A, Da Silva PF, Biancardi CM, De Souza Castro FA, Clausel NO. 2017.** Effect of walking speed in heart failure patients and heart transplant patients. *Clinical Biomechanics* **42**:85–91 DOI [10.1016/j.clinbiomech.2017.01.008](https://doi.org/10.1016/j.clinbiomech.2017.01.008).
- Booster NA, Su FY, Adolph SC, Ahn AN. 2015.** Effect of temperature on leg kinematics in sprinting tarantulas (*Aphonopelma hentzi*): high speed may limit hydraulic joint actuation. *Journal of Experimental Biology* **218**:977–982 DOI [10.1242/jeb.111922](https://doi.org/10.1242/jeb.111922).
- Cavagna GA, Franzetti P, Heglund NC, Willems P. 1988.** The determinants of the step frequency in running, trotting and hopping in man and other vertebrates. *Journal de Physiologie* **399**:81–92 DOI [10.1113/jphysiol.1988.sp017069](https://doi.org/10.1113/jphysiol.1988.sp017069).
- Cavagna GA, Heglund NC, Taylor CR. 1977.** Mechanical work in terrestrial locomotion: Two basic mechanisms for minimizing energy expenditure. *American Journal of Physiology* **233**:243–261 DOI [10.1152/ajpregu.1977.233.5.R243](https://doi.org/10.1152/ajpregu.1977.233.5.R243).
- Cavagna GA, Kaneko M. 1977.** Mechanical work and efficiency in level walking and running. *Journal de Physiologie* **268**:467–481 DOI [10.1113/jphysiol.1977.sp011866](https://doi.org/10.1113/jphysiol.1977.sp011866).
- Cavagna GA, Thys H, Zamboni A. 1976.** The sources of external work in level walking and running. *Journal de Physiologie* **262**:639–657 DOI [10.1113/jphysiol.1976.sp011613](https://doi.org/10.1113/jphysiol.1976.sp011613).
- Clemente CJ, Federle W. 2008.** Pushing versus pulling: division of labour between tarsal attachment pads in cockroaches. *Proceedings of the Royal Society B Biological Sciences* **275**(1640):1329–1336 DOI [10.1098/rspb.2007.1660](https://doi.org/10.1098/rspb.2007.1660).
- Costa FG, Pérez-Miles F, Mignone A. 2004.** Pompilid wasp interactions with burrowing tarantulas: *Pepsis cupripennis* versus *Eupalaestrus weijenberghi* and *Acanthoscurria suina* (Araneae, Theraphosidae). *Studies on Neotropical Fauna and Environment* **39**(1):37–43 DOI [10.1080/01650520412331270945](https://doi.org/10.1080/01650520412331270945).
- DelaFuente JA. 1994.** *Zoología de artrópodos*. Madrid: Interamericana-McGraw-Hill.
- Dickinson MH, Farley CT, Full RJ, Koehl MA, Kram R, Lehman S. 2000.** How animals move: an integrative view. *Science* **288**:100–106 DOI [10.1126/science.288.5463.100](https://doi.org/10.1126/science.288.5463.100).

- Evans MEG. 1977.** Locomotion in the Coleoptera Adephaga, especially Carabidae. *Journal of Zoology* **181**:189–266 DOI [10.1111/j.1469-7998.1977.tb03237.x](https://doi.org/10.1111/j.1469-7998.1977.tb03237.x).
- Farley CT, Glasheen J, McMahon TA. 1993.** Running springs: speed and animal size. *Journal of Experimental Biology* **185**:71–86.
- Fedak MA, Heglund NC, Taylor CR. 1982.** Energetics and mechanics of terrestrial locomotion. II. Kinetic energy changes of the limbs and body as a function of speed and body size in birds and mammals. *Journal of Experimental Biology* **97**:23–40.
- Figuroa PJ, Leite NJ, Barros RM. 2003.** A flexible software for tracking of markers used in human motion analysis. *Computer Methods and Programs in Biomedicine* **72**:155–165 DOI [10.1016/S0169-2607\(02\)00122-0](https://doi.org/10.1016/S0169-2607(02)00122-0).
- Foelix R. 2011.** *Biology of spiders*. New York: Oxford University Press.
- Full RJ, Tu MS. 1990.** Mechanics of six-legged runners. *Journal of Experimental Biology* **148**:129–146.
- Full RJ, Tu MS. 1991.** Mechanics of a rapid running insect: two-, four- and six-legged locomotion. *Journal of Experimental Biology* **156**:215–231.
- Gabaldón AM, Nelson FE, Roberts TJ. 2004.** Mechanical function of two ankle extensors in wild turkeys: shifts from energy production to energy absorption during incline versus decline running. *Journal of Experimental Biology* **207**:2277–2288 DOI [10.1242/jeb.01006](https://doi.org/10.1242/jeb.01006).
- Gottschall JS, Kram R. 2006.** Mechanical energy fluctuations during hill walking: the effects of slope on inverted pendulum exchange. *Journal of Experimental Biology* **209**:4895–4900 DOI [10.1242/jeb.02584](https://doi.org/10.1242/jeb.02584).
- Griffin TM, Main RP, Farley CT. 2004.** Biomechanics of quadrupedal walking: how do four-legged animals achieve inverted pendulum-like movements? *Journal of Experimental Biology* **207**:3545–3558 DOI [10.1242/jeb.01177](https://doi.org/10.1242/jeb.01177).
- Grossi B, Canals M. 2015.** Energetics, scaling and sexual size dimorphism of spiders. *Acta Biotheoretica* **63**:71–81 DOI [10.1007/s10441-014-9237-5](https://doi.org/10.1007/s10441-014-9237-5).
- Grossi B, Solis R, Veloso C, Canals M. 2016a.** Consequences of sexual size dimorphism on energetics and locomotor performance of *Grammostola rosea* (Araneae; Theraphosidae). *Physiological Entomology* **41**:281–288 DOI [10.1111/phen.12154](https://doi.org/10.1111/phen.12154).
- Grossi B, Veloso C, Taucare-Ríos A, Canals M. 2016b.** Allometry of locomotor organs and sexual size dimorphism in the mygalomorph spider *Grammostola rosea* (Walckenaer, 1837) (Araneae, Theraphosidae). *Journal of Arachnology* **44**:99–102 DOI [10.1636/M15-51.1](https://doi.org/10.1636/M15-51.1).
- Hammer Ø, Harper DAT, Ryan PD. 2001.** Past: paleontological statistics software package for education and data analysis. *Palaeontologia Electronica* **4**(1):Article 4.
- Heglund NC, Fedak MA, Taylor CR, Cavagna GA. 1982.** Energetics and mechanics of terrestrial locomotion. IV. Total mechanical energy changes as a function of speed and body size in birds and mammals. *Journal of Experimental Biology* **97**:57–66.
- Heglund NC, Taylor CR. 1988.** Speed, stride frequency and energy cost per stride: how do they change with body size and gait? *Journal of Experimental Biology* **138**:301–318.
- Herreid CFI, Full RJ. 1980.** Energetics of running tarantulas [Abstract 40]. *Physiologist* **23**.

- Higham TE, Birn-Jeffery AV, Collins CE, Hulsey CD, Russell AP. 2015.** Adaptive simplification and the evolution of gecko locomotion: morphological and biomechanical consequences of losing adhesion. *Proceedings of the National Academy of Sciences of the United States of America* **112**:809–814 DOI [10.1073/pnas.1418979112](https://doi.org/10.1073/pnas.1418979112).
- Hildebrand M. 1966.** Analysis of the symmetrical gaits of tetrapods. *Folia Biotheor* **6**:9–22.
- Hildebrand M. 1977.** Analysis of asymmetrical gaits. *Journal of Mammalogy* **58**:131–156 DOI [10.2307/1379571](https://doi.org/10.2307/1379571).
- Irschick DJ, Jayne BC. 2000.** Size matters: ontogenetic variation in the three-dimensional kinematics of steady-speed locomotion in the lizard *Dipsosaurus dorsalis*. *Journal of Experimental Biology* **203**:2133–2148.
- Kram R, Wong B, Full RJ. 1997.** Three-dimensional kinematics and limb kinetic energy of running cockroaches. *Journal of Experimental Biology* **200**:1919–1929.
- Lapinski W, Walther P, Tschapka M. 2015.** Morphology reflects microhabitat preferences in an assemblage of neotropical wandering spiders. *Zoomorphology* **134**:219–236 DOI [10.1007/s00435-015-0257-8](https://doi.org/10.1007/s00435-015-0257-8).
- Maes LD, Herbin M, Hackert R, Bels VL, Abourachid A. 2008.** Steady locomotion in dogs: temporal and associated spatial coordination patterns and the effect of speed. *Journal of Experimental Biology* **211**:138–149 DOI [10.1242/jeb.008243](https://doi.org/10.1242/jeb.008243).
- Minetti AE. 1998.** A model equation for the prediction of mechanical internal work of terrestrial locomotion. *Journal of Biomechanics* **31**:463–468 DOI [10.1016/S0021-9290\(98\)00038-4](https://doi.org/10.1016/S0021-9290(98)00038-4).
- Minetti AE, Ardigo LP, Saibene F. 1993.** Mechanical determinants of gradient walking energetics in man. *Journal de Physiologie* **471**:725–735 DOI [10.1113/jphysiol.1993.sp019969](https://doi.org/10.1113/jphysiol.1993.sp019969).
- Minetti AE, Saibene F. 1992.** Mechanical work rate minimization and freely chosen stride frequency of human walking: a mathematical model. *Journal of Experimental Biology* **170**:19–34.
- Moya-Laraño J, Vinković D, De Mas E, Corcobado G, Moreno E. 2008.** Morphological evolution of spiders predicted by pendulum mechanics. *PLOS ONE* **3**:e1841 DOI [10.1371/journal.pone.0001841](https://doi.org/10.1371/journal.pone.0001841).
- Niederegger S. 2013.** Functional aspects of spider scopulae. In: Nentwing W, ed. *Spider ecophysiology*. Berlin: Springer, 57–66 DOI [10.1007/978-3-642-33989-9_5](https://doi.org/10.1007/978-3-642-33989-9_5).
- Niederegger S, Gorb SN. 2006.** Friction and adhesion in the tarsal and metatarsal scopulae of spiders. *Journal of Comparative Physiology A* **192**(11):1223–1232 DOI [10.1007/s00359-006-0157-y](https://doi.org/10.1007/s00359-006-0157-y).
- Parsons KJ, Pfau T, Wilson AM. 2008.** High-speed gallop locomotion in the Thoroughbred racehorse. I. The effect of incline on stride parameters. *Journal of Experimental Biology* **211**(6):935–944 DOI [10.1242/jeb.006650](https://doi.org/10.1242/jeb.006650).
- Pavei G, Seminati E, Cazzola D, Minetti AE. 2017.** On the estimation accuracy of the 3D body center of mass trajectory during human locomotion: inverse vs. forward dynamics. *Frontiers in Physiology* **8**:Article 129 DOI [10.3389/fphys.2017.00129](https://doi.org/10.3389/fphys.2017.00129).

- Pérez-Miles F. 1994.** Tarsal scopula division in Theraphosinae (Araneae, Theraphosidae): its systematic significance. *Journal of Arachnology* **22**:46–53.
- Pérez-Miles F, Costa FG, Toscano-Gadea C, Mignone A. 2005.** Ecology and behaviour of the road tarantulas *Eupalaestrus weijenberghi* and *Acanthoscurria suina* (Araneae, Theraphosidae) from Uruguay. *Journal of Natural History* **39**:483–498 DOI [10.1080/00222930410001671282](https://doi.org/10.1080/00222930410001671282).
- Pérez-Miles F, Guadanucci JPL, Jurgilas JP, Becco R, Perafán C. 2017.** Morphology and evolution of scopula, pseudoscopula and claw tufts in Mygalomorphae (Araneae). *Zoomorphology* **136**(4):1–25 DOI [10.1007/s00435-017-0364-9](https://doi.org/10.1007/s00435-017-0364-9).
- Pérez-Miles F, Perafán C, Santamaría L. 2015.** Tarantulas (Araneae: Theraphosidae) use different adhesive pads complementarily during climbing on smooth surfaces: experimental approach in eight arboreal and burrower species. *Biology Open* **4**:1643–1648 DOI [10.1242/bio.013144](https://doi.org/10.1242/bio.013144).
- Rasband WS. 1997–2016.** ImageJ. U. S. National Institutes of Health, Bethesda, Maryland.
- Reinhardt L, Blickhan R. 2014.** Level locomotion in wood ants: evidence for grounded running. *Journal of Experimental Biology* **217**:2358–2370 DOI [10.1242/jeb.098426](https://doi.org/10.1242/jeb.098426).
- Root TM. 1985.** Central and peripheral organization of scorpion locomotion. In: Barth FG, ed. *Neurobiology of arachnids*. Berlin: Springer-Verlag, 337–347.
- Roth LM, Willis ER. 1952.** Tarsal structure and climbing ability of cockroaches. *Journal of Experimental Zoology* **119**(3):483–517 DOI [10.1002/jez.1401190307](https://doi.org/10.1002/jez.1401190307).
- Saibene F, Minetti AE. 2003.** Biomechanical and physiological aspects of legged locomotion in humans. *European Journal of Applied Physiology and Occupational Physiology* **88**:297–316 DOI [10.1007/s00421-002-0654-9](https://doi.org/10.1007/s00421-002-0654-9).
- Seidl T, Wehner R. 2008.** Walking on inclines: how do desert ants monitor slope and step length. *Frontiers in Zoology* **5**(1):Article 8 DOI [10.1186/1742-9994-5-8](https://doi.org/10.1186/1742-9994-5-8).
- Sensenig AT, Shultz JW. 2003.** Mechanics of cuticular elastic energy storage in leg joints lacking extensor muscles in arachnids. *Journal of Experimental Biology* **206**(4):771–784 DOI [10.1242/jeb.00182](https://doi.org/10.1242/jeb.00182).
- Sensenig AT, Shultz JW. 2006.** Mechanical energy oscillations during locomotion in the harvestman *Leiobunum vittatum* (Opiliones). *Journal of Arachnology* **34**:627–633 DOI [10.1636/0161-8202\(2006\)034\[0627:MEODLI\]2.0.CO;2](https://doi.org/10.1636/0161-8202(2006)034[0627:MEODLI]2.0.CO;2).
- Shamble PS, Hoy RR, Cohen I, Beatus T. 2017.** Walking like an ant: a quantitative and experimental approach to understanding locomotor mimicry in the jumping spider *Myrmarachne formicaria*. *Proceedings of the Royal Society B Biological Sciences* **284**(1858):Article 20170308 DOI [10.1098/rspb.2017.0308](https://doi.org/10.1098/rspb.2017.0308).
- Shillington C, Peterson CC. 2002.** Energy metabolism of male and female tarantulas (*Aphonopelma anax*) during locomotion. *Journal of Experimental Biology* **205**:2909–2914.
- Spagna JC, Peattie AM. 2012.** Terrestrial locomotion in arachnids. *Journal of Insect Physiology* **58**:599–606 DOI [10.1016/j.jinsphys.2012.01.019](https://doi.org/10.1016/j.jinsphys.2012.01.019).

- Spagna JC, Valdivia EA, Mohan V. 2011.** Gait characteristics of two fast-running spider species (*Hololena adnexa* and *Hololena curta*), including an aerial phase (Araneae: Agelenidae). *Journal of Arachnology* **39**(1):84–92 DOI [10.2307/23048784](https://doi.org/10.2307/23048784).
- Ting LH, Blickhan R, Full RJ. 1994.** Dynamic and static stability in hexapedal runners. *Journal of Experimental Biology* **269**:251–269.
- Wang Z, Wang J, Ji A, Li H, Dai Z. 2011.** Movement behavior of a spider on a horizontal surface. *Chinese Science Bulletin* **56**(25):Article 2748 DOI [10.1007/s11434-011-4584-y](https://doi.org/10.1007/s11434-011-4584-y).
- Ward TM, Humphreys FW. 1981.** The effect of filming speed on the interpretation of arthropod locomotion. *Journal of Experimental Biology* **92**:323–331.
- Weihmann T. 2013.** Crawling at high speeds: steady level locomotion in the spider *Cupiennius salei*—global kinematics and implications for centre of mass dynamics. *PLOS ONE* **8**(6):e65788 DOI [10.1371/journal.pone.0065788](https://doi.org/10.1371/journal.pone.0065788).
- Weihmann T, Blickhan R. 2009.** Comparing inclined locomotion in a ground-living and a climbing ant species: sagittal plane kinematics. *Journal of Comparative Physiology. A, Sensory, Neural, and Behavioral Physiology* **195**(11):Article 1011 DOI [10.1007/s00359-009-0475-y](https://doi.org/10.1007/s00359-009-0475-y).
- Weihmann T, Brun PG, Pycroft E. 2017.** Speed dependent phase shifts and gait changes in cockroaches running on substrates of different slipperiness. *Frontiers in Zoology* **14**(1):Article 54 DOI [10.1186/s12983-017-0232-y](https://doi.org/10.1186/s12983-017-0232-y).
- Willems PA, Cavagna GA, Heglund NC. 1995.** External, internal and total work in human locomotion. *Journal of Experimental Biology* **198**:379–393.
- Wilshin S, Shamble PS, Hovey KJ, Harris R, Spence AJ, Hsieh ST. 2018.** Limping following limb loss increases locomotor stability. *Journal of Experimental Biology* **221**(18):Article jeb174268 DOI [10.1242/jeb.174268](https://doi.org/10.1242/jeb.174268).
- Wohlfart E, Wolff JO, Arzt E, Gorb SN. 2014.** The whole is more than the sum of all its parts: collective effect of spider attachment organs. *Journal of Experimental Biology* **217**:222–224 DOI [10.1242/jeb.093468](https://doi.org/10.1242/jeb.093468).
- Wöhrl T, Reinhardt L, Blickhan R. 2017.** Propulsion in hexapod locomotion: how do desert ants traverse slopes? *Journal of Experimental Biology* **220**(9):1618–1625 DOI [10.1242/jeb.137505](https://doi.org/10.1242/jeb.137505).
- Wolff JO, Gorb SN. 2015.** Adhesive foot pads: an adaptation to climbing? An ecological survey in hunting spiders. *Zoology* **118**:1–7 DOI [10.1016/j.zool.2014.04.006](https://doi.org/10.1016/j.zool.2014.04.006).
- Wolff JO, Nentwig W, Gorb SN. 2013.** The great silk alternative: multiple co-evolution of web loss and sticky hairs in spiders. *PLOS ONE* **8**:e62682 DOI [10.1371/journal.pone.0062682](https://doi.org/10.1371/journal.pone.0062682).
- Wu G, Cavanagh P. 1995.** ISB recommendations for standardization in the reporting of kinematic data. *Journal of Experimental Biology* **10**:1257–1260.
- Zatsiorsky VM. 2002.** *Kinematics of human motion*. Champaign: Human Kinetics.
- Zeng Y, Crews S. 2018.** Biomechanics of omnidirectional strikes in flat spiders. *Journal of Experimental Biology* **221**(7):Article jeb166512 DOI [10.1242/jeb.166512](https://doi.org/10.1242/jeb.166512).
- Zollikofer CPE. 1994.** Stepping patterns in ants. *Journal of Experimental Biology* **192**:95–106.