

2016

# Smashing Silos: Community Engagement Maps - A VIVO Extension

Tessa McKenzie

*Virginia Commonwealth University, [tmckenzie@vcu.edu](mailto:tmckenzie@vcu.edu)*

Audrey Trussell

*Virginia Commonwealth University, [atrussell@vcu.edu](mailto:atrussell@vcu.edu)*

Valerie Holton

*Virginia Commonwealth University, [vholton@vcu.edu](mailto:vholton@vcu.edu)*

Stephen Guilford

*Virginia Commonwealth University, [guilfordsm@vcu.edu](mailto:guilfordsm@vcu.edu)*

Jonathan DeShazo

*Virginia Commonwealth University, [jpdeshazo@vcu.edu](mailto:jpdeshazo@vcu.edu)*

Follow this and additional works at: [http://scholarscompass.vcu.edu/community\\_resources](http://scholarscompass.vcu.edu/community_resources)



Part of the [Higher Education Commons](#)

---

Downloaded from

[http://scholarscompass.vcu.edu/community\\_resources/53](http://scholarscompass.vcu.edu/community_resources/53)

This Conference Proceeding is brought to you for free and open access by the Division of Community Engagement at VCU Scholars Compass. It has been accepted for inclusion in Division of Community Engagement Resources by an authorized administrator of VCU Scholars Compass. For more information, please contact [libcompass@vcu.edu](mailto:libcompass@vcu.edu).

---

# Smashing Silos: Community Engagement Maps - A VIVO Extension

## **Abstract**

This poster was presented at the VIVO 2016 Conference in Denver, Colorado.

## **Keywords**

VIVO, CTSA, higher education, community engagement, VCU, Virginia Commonwealth University, map, mapping, partnerships, university-community partnerships, community engagement, engagement, civic engagement

## **Disciplines**

Higher Education





# Smashing Silos

## Community Engagement Maps: A VIVO Extension

### WHAT

- The Map:**
- Is an extension of VIVO that enables the discovery of research and scholarship beyond campus walls.
  - Promotes networking among academics and community members
  - Uses community engagement ontology
  - Includes an interactive search interface with map display and four filter areas: Geographic Reach, Focus Area, VCU Unit, and Activity Type
  - Utilizes freemarker code & Google Map API

- The Map Displays:**
- Sustained university-community partnerships\* between VCU & community partner organizations
  - Community partners (i.e. external organizations) include, but are not limited to, nonprofits, businesses, government agencies, schools, and art galleries.

### DATA

**In 2016, VCU completed its first round of partnership data collection using an online survey.**

- Survey was distributed university-wide and by faculty who are involved in sustained community-engaged partnerships

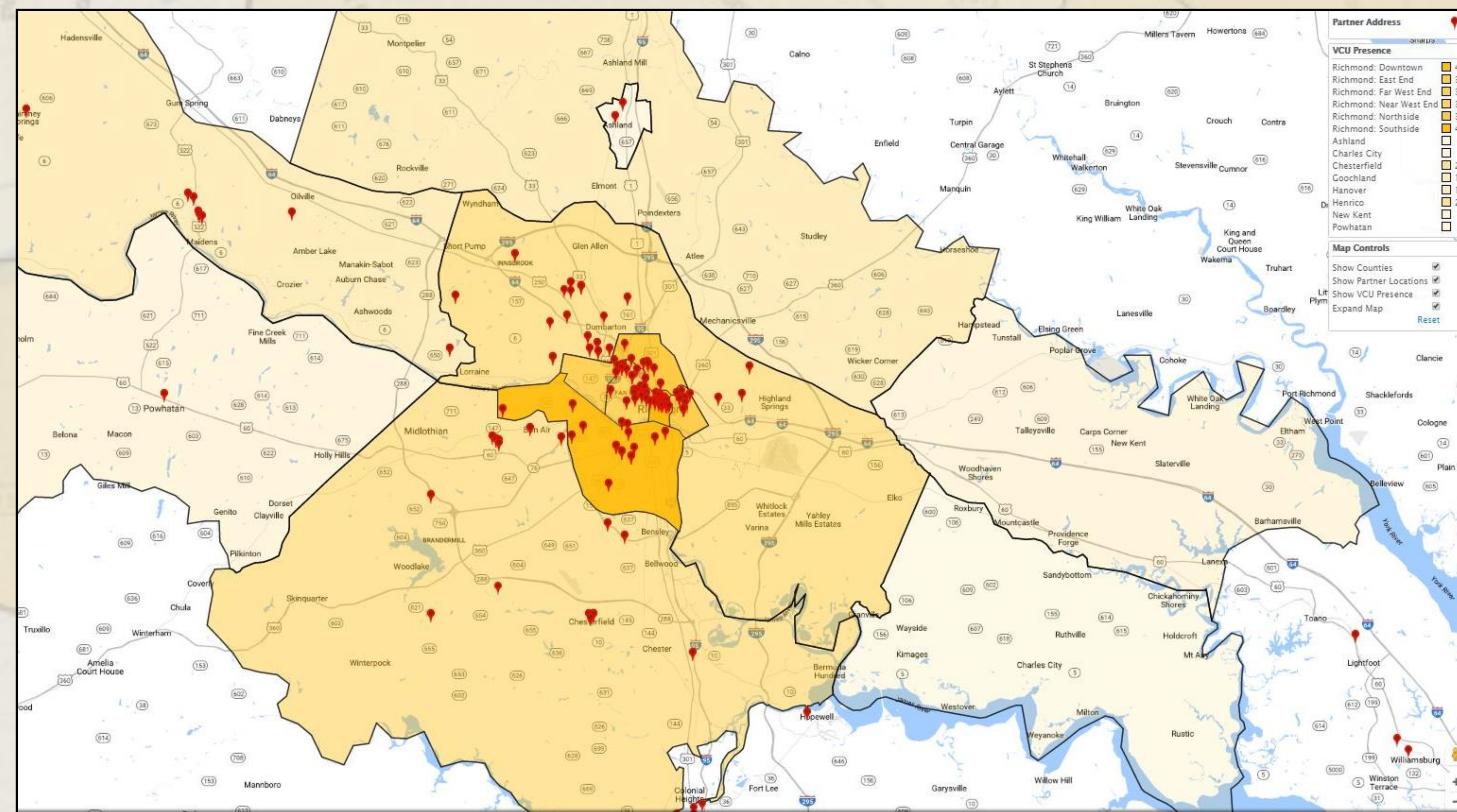
**Partnership Survey Data Points**

- VCU Faculty & Unit Involvement
- Partner Information
- Geographic Reach
- Focus Areas
- Partnership Activity Type

**Survey Results**

- 184 Partnerships involved in the Richmond region and beyond
- 17 different focus areas
- 107 sustained partnerships appear on map

**VCU is actively involved in the Richmond region through community-engaged partnerships in research, teaching, service/outreach, and patient care.**



<p><b>Geographic reach<sup>i</sup></b></p> <ul style="list-style-type: none"> <li><input checked="" type="checkbox"/> Richmond: Downtown</li> <li><input type="checkbox"/> Richmond: East End</li> <li><input type="checkbox"/> Richmond: Far West End</li> <li><input type="checkbox"/> Richmond: Near West End</li> <li><input type="checkbox"/> Richmond: Northside</li> </ul>	<p><b>VCU Unit<sup>i</sup></b></p> <ul style="list-style-type: none"> <li>+Arts, School of</li> <li>+Business, School of</li> <li>+Dentistry, School of</li> <li>+Education, School of</li> <li>+Engineering, School of</li> </ul>	<p><b>Focus area<sup>i</sup></b></p> <ul style="list-style-type: none"> <li>+Arts, Humanities &amp; Culture</li> <li>+Criminal Justice &amp; Public Safety</li> <li>+Early Childhood Development</li> </ul>	<p><b>Activity<sup>i</sup></b></p> <ul style="list-style-type: none"> <li>+Health-Related</li> <li>+Research/Creative</li> <li>+Service/Outreach</li> <li>+Teaching/Learning</li> </ul>
---	--	---	---

**VIVO combined with a google-based map provide flexible reporting and visualizations that can be filtered by geographic reach, unit, focus area and activity types.**

### WHY

Before the Map, there was no mechanism to identify, track and evaluate partnership activities.

**The Partnership Map provides a pan-institutional resource to connect, collaborate, and coordinate, community-engaged activities and identify potential areas of opportunity.**

**VIVO and the Map provide flexible reporting and data aggregations at the university, college, school, department, and faculty levels.**

### NEXT STEPS

This project is an ongoing collaborative effort that will continue to develop as a community engagement networking tool.

- Exploration, Testing and Further Development: Ongoing
- Targeted Rollout: Fall 2016
- Data Updates: Annually, using the online survey

### PROJECT TEAM + SPONSORS

- Tessa McKenzie, Division of Community Engagement
- Audrey Trussell, Division of Community Engagement
- Valerie Holton, Division of Community Engagement
- Stephen Guilford, University Relations
- Jon DeShazo, Center for Clinical and Translation Research
- Council for Community Engagement