

Supplementary Material

**Evolutionary history influences the salinity preference
of bacterial taxa in wetland soils**

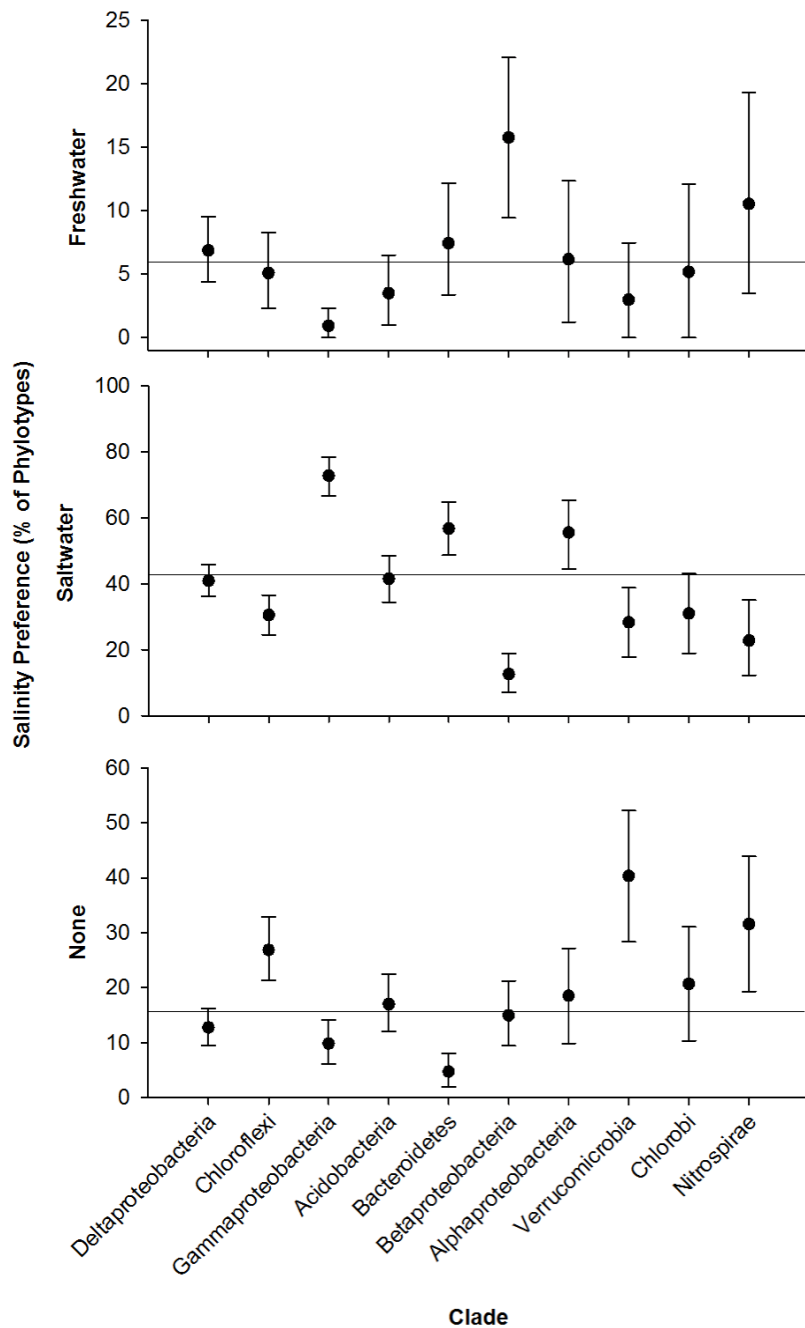
Ember M. Morrissey^{1,2} and Rima B. Franklin^{1*}

¹Laboratory of Microbial Ecology, Department of Biology, Virginia Commonwealth University, Richmond, VA, USA

²Center for Ecosystem Science and Society, Northern Arizona University, Flagstaff, AZ, USA

* **Correspondence:** Rima B. Franklin, Laboratory of Microbial Ecology, Department of Biology, Virginia Commonwealth University, 1000 West Cary Street, Richmond, VA, 23284, USA

rbfranklin@vcu.edu



Supplemental Figure 1. Proportion of phylotypes within each salinity preference across the dominant phylogenetic clades. Data are means \pm 95% confidence intervals produced from bootstrapping. Each line represent the expected random value (% of total phylotypes in each preference category), a deviation from random indicates a tendency for or against the preference.