

2014

# A Simple, Sensitive and Safe Method to Determine the Human $\alpha/\beta$ -Tryptase Genotype

Quang Trong Le

*Virginia Commonwealth University*, quang.le@vcuhealth.org

Sahar Lotfi-Emran

*Virginia Commonwealth University*, lotfiemrans@vcu.edu

Hae-Ki Min

*Virginia Commonwealth University*, Hae-Ki.Min@vcuhealth.org

Lawrence B. Schwartz

*Virginia Commonwealth University*, lschwart@vcu.edu

Follow this and additional works at: [http://scholarscompass.vcu.edu/intmed\\_pubs](http://scholarscompass.vcu.edu/intmed_pubs)

 Part of the [Medicine and Health Sciences Commons](#)

Le, Q., Lotfi-Emran, S., & Min, H., et al. A Simple, Sensitive and Safe Method to Determine the Human  $\alpha/\beta$ -Tryptase Genotype. PLoS ONE, 9, e0114944. Copyright © 2014 Le et al. This is an open-access article distributed under the terms of the Creative Commons Attribution License, which permits unrestricted use, distribution, and reproduction in any medium, provided the original author and source are credited.

Downloaded from

[http://scholarscompass.vcu.edu/intmed\\_pubs/103](http://scholarscompass.vcu.edu/intmed_pubs/103)

This Article is brought to you for free and open access by the Dept. of Internal Medicine at VCU Scholars Compass. It has been accepted for inclusion in Internal Medicine Publications by an authorized administrator of VCU Scholars Compass. For more information, please contact [libcompass@vcu.edu](mailto:libcompass@vcu.edu).

RESEARCH ARTICLE

# A Simple, Sensitive and Safe Method to Determine the Human $\alpha/\beta$ -Tryptase Genotype

Quang Trong Le, Sahar Lotfi-Emran, Hae-Ki Min, Lawrence B. Schwartz\*

Department of Internal Medicine, Virginia Commonwealth University, Richmond, Virginia, United States of America

\*[lbschwar@vcu.edu](mailto:lbschwar@vcu.edu)

## Abstract

The human tryptase locus on chromosome 16 contains one gene encoding only  $\beta$ -tryptase and another encoding either  $\beta$ -tryptase or the homologous  $\alpha$ -tryptase, providing  $\alpha:\beta$  gene ratios of 0:4, 1:3 or 2:2 in the diploid genome, these genotypes being of potential clinical relevance in severe atopy. Using an EcoRV restriction site in  $\alpha$ - but not  $\beta$ - tryptase, PCR products, spanning intron 1 to exon 5, were used to determine  $\alpha/\beta$ -tryptase gene ratios using non-radioactive labels, including ethidium bromide labeling of all PCR products, and either digoxigenin-primer or DY682-primer labeling of only the final PCR cycle products. Sensitivity increased  $\sim 60$ -fold with each final PCR cycle labeling technique. Ethidium bromide labeling underestimated amounts of  $\alpha$ -tryptase, presumably because heteroduplexes of  $\alpha/\beta$ -tryptase amplimers, formed during annealing, were EcoRV resistant. In contrast, both final PCR cycle labeling techniques precisely quantified these gene ratios, because only homoduplexes were labeled. Using the DY682-primer was most efficient, because PCR/EcoRV products could be analyzed directly in the gel; while digoxigenin-labeled products required transfer to a nitrocellulose membrane followed by immunoblotting. This technique for determining the  $\alpha/\beta$ -tryptase genotype is sensitive, accurate, simple and safe, and should permit high-throughput screening to detect potential phenotype-genotype relations for  $\alpha/\beta$ -tryptases, and for other closely related alleles.



CrossMark  
click for updates

## OPEN ACCESS

**Citation:** Le QT, Lotfi-Emran S, Min H-K, Schwartz LB (2014) A Simple, Sensitive and Safe Method to Determine the Human  $\alpha/\beta$ -Tryptase Genotype. PLoS ONE 9(12): e114944. doi:10.1371/journal.pone.0114944

**Editor:** Alfred S. Lewin, University of Florida, United States of America

**Received:** August 6, 2014

**Accepted:** November 16, 2014

**Published:** December 29, 2014

**Copyright:** © 2014 Le et al. This is an open-access article distributed under the terms of the [Creative Commons Attribution License](https://creativecommons.org/licenses/by/4.0/), which permits unrestricted use, distribution, and reproduction in any medium, provided the original author and source are credited.

**Data Availability:** The authors confirm that all data underlying the findings are fully available without restriction. All relevant data are within the paper and Supporting Information files.

**Funding:** This work was supported by the National Institutes of Health (AI27517, AI77435 to L.B.S.).

**Competing Interests:** The authors have declared that no competing interests exist.

## Introduction

The human tryptase locus on chromosome 16 includes genes that encode  $\alpha$ - and  $\beta$ - tryptases [1], which are major protein products of human mast cells, lesser

amounts being expressed by basophils, and none being expressed by other cell types [2]. The locus includes one gene that always expresses a  $\beta$ -tryptase (TPSB2), and another one that can express either  $\alpha$ - or  $\beta$ - tryptase (TPSAB1). Thus,  $\alpha:\beta$  tryptase gene ratios are typically 0:4, 1:3 or 2:2, depending on whether the parental TPSAB1 genes encode either  $\alpha$ - or  $\beta$ - tryptase. Importantly, mature  $\beta$ -tryptase is proteolytically active as a homotetramer, whereas mature  $\alpha$ -tryptase is proteolytically inactive, despite having 93% protein sequence identity to  $\beta$ -tryptase [3–6], and pro and mature tryptase serve as biomarkers of human diseases such as mastocytosis and systemic anaphylaxis [2]. A frame-shift mutation in the  $\beta$ -tryptase gene, though uncommon, also has been detected at TPSB2 in Caucasians and African Americans, but not in Asians, giving rise to a truncated inactive form of  $\beta$ -tryptase, and when present, only full length  $\beta$ -tryptase has been detected at the TPSAB1 locus, seemingly ensuring that everyone expresses an active form of  $\beta$ -tryptase [7]. This locus also includes TPSD1, the  $\delta$ -tryptase gene [1], originally called MMCP-7-like gene, harboring a mutation that truncates the protein 40 amino acids short of 245 amino acid sequences of the mature  $\alpha/\beta$ -tryptases, likely making this a pseudogene [1, 8, 9], though one report contests this conclusion [10]. TPSG1, the  $\gamma$ -tryptase gene, encodes a transmembrane protease that is quite distinct from the  $\alpha/\beta$ -tryptases [11, 12]. Measuring allelic  $\alpha/\beta$ -tryptase gene ratios can be a powerful approach toward detecting potential involvement of  $\alpha$ -tryptase on disease phenotypes. For example, in one study the 2:2 but not 1:3  $\alpha:\beta$  tryptase genotype, compared to the 0:4  $\alpha:\beta$  genotype, was associated with higher serum levels of IgE and more severe atopy [13].

PCR-sequencing was used initially to demonstrate that 20% of Caucasians and African Americans, and 10% of Asians were  $\alpha$ -tryptase gene deficient, but incorrectly concluded these deficiencies were due to a deletion of the  $\alpha$ -tryptase gene rather than allelic heterogeneity and did not attempt to distinguish between 2:2 and 1:3  $\alpha:\beta$  tryptase genotypes [14]. One strategy distinguishing  $\alpha$ - from  $\beta$ -tryptase alleles utilizes restriction fragment length polymorphism methods. In particular, an EcoRV restriction site in  $\alpha$ -tryptase genomic DNA (gDNA)<sup>1</sup> was identified [15], that was later utilized to distinguish  $\alpha$  (cleaved) from  $\beta$  (uncleaved) tryptase gene PCR products [16], allowing the  $\alpha:\beta$  tryptase gene ratios (genotype frequency) to be calculated at 2:2 (0.21), 1:3 (0.50) or 0:4 (0.29), and again finding that  $\alpha$ -tryptase gene deficiency was higher in Caucasians (0.45) and African Americans (0.26) than Asians (0.13). However, the use of ethidium bromide to measure PCR amplicons and their cleavage products provided potential ambiguity in distinguishing 2:2 from 1:3  $\alpha:\beta$  tryptase gene ratios, because  $\alpha/\beta$ -tryptase gene amplicons may form heteroduplexes that resist EcoRV cleavage, increasing the apparent amount of the  $\beta$ -tryptase gene. This potential limitation was overcome using a hot-stop technique, introducing radioactive nucleotides only during the final PCR cycle, such that all labeled PCR products were homoduplexes [17], and yielding  $\alpha:\beta$  tryptase gene ratios (frequencies) of 2:2 (0.29), 1:3 (0.44), and 0:4 (0.26). However, radioactive agents are inherently hazardous. Another technique used for quantitative tryptase genotyping involved performing a high resolution melt curve on a 70 bp PCR product from Exon 4,

having 6 nucleotide  $\alpha:\beta$  mismatches [13]. This study reported an  $\alpha$ -tryptase gene deficiency of 57%, a genotype with 1  $\alpha$ -tryptase gene in 31%, 2  $\alpha$ -tryptase genes in 11%, and 3  $\alpha$ -tryptase genes in 1%, but utilized primers that recognize  $\delta$ -tryptase as well as  $\alpha$ - and  $\beta$ - tryptase genes. The  $\delta$ -tryptase amplicon, having 3 nucleotide mismatches with  $\alpha$ -tryptase and 5 with  $\beta$ -tryptases, may have affected the apparent  $\alpha/\beta$  genotype results calculated from the melt curves.

Using nonradioactive labelled primers not only eliminates the hazards of working with radioactivity, but also may increase resolution and sensitivity [18, 19]. We report a novel non-radioactive PCR genotyping method for efficiently and accurately genotyping the ratios of  $\alpha$ - and  $\beta$ - tryptase genes in genomic DNA, utilizing a 3'-primer, conjugated with an infrared-fluorescent label, a technique that should be broadly applicable to quantification of other duplicated genes with minor sequence differences. IRD-700 or DY862 label detection at infrared wavelengths provides high sensitivity, in part due to the very low background of infrared auto-fluorescence, being more sensitive than visible fluorescence [19]. Furthermore, these dyes have excellent water solubility, minimal nonspecific binding, and do not interfere with PCR. Compared to the direct IRD fluorescent PCR method, using digoxigenin-labeled DNA primers for PCR, detected with IRD-700-labeled anti-digoxigenin IgG, is very sensitive and exhibits low levels of nonspecific binding compared to other techniques [20, 21].

Our new non-radioactive PCR/restriction enzyme digestion method for determining allele-specific quantitative gene ratios offer several advantages over other previous methods, including: (i) high sensitivity; (ii) ease of performance; (iii) safety; and (iv) a stable labeled primer, and was used to determine the  $\alpha:\beta$ -tryptase genotypes in genomic DNA from 24 individuals.

## Materials and Methods

### Reagents

Betaine (B0300), Me<sub>2</sub>SO (DMSO), glycerin, phosphate-buffered saline, 2-(*N*-morpholino)ethane sulfonic acid (MES), Hepes, Tris, EDTA, bovine serum albumin, agarose, and MgCl<sub>2</sub> (Sigma-Aldrich Chemical Company LLC, St. Louis, MO); dNTP mix, gDNA purification kit, RNase-free DNase, and EcoRV (Promega Company, Fitchburg, WI); ProbeQuant G-50 Micro column (Amersham, Piscataway, NJ); FastStart Taq DNA Polymerase (Roche Diagnostics, Indianapolis, IN); polyacrylamide gels (Invitrogen, Carlsbad, CA); goat affinity-purified polyclonal IgG anti-digoxigenin (Vector Laboratories, Burlingame, CA); and IRDye680RD-labeled affinity-purified donkey IgG anti-goat IgG (LiCor, Lincoln, NE) were obtained as indicated.

Human mast cell leukemia cells (HMC)-1, obtained from a patient with mast cell leukemia and provided by Dr. G. Gleich and Dr. J. Butterfield (Mayo Clinic, Rochester, MN) [22], known to contain only  $\beta$ I and  $\beta$ III variants of the  $\beta$ -tryptase gene; [7] and Mono Mac-6 cells [23], a cell line established from a patient with monocytic leukemia and containing both  $\alpha$ - and  $\beta$ - tryptase genes [24], were

cultured in RPMI 1640 medium supplemented with 10% heat-inactivated fetal calf serum, L-glutamine, penicillin and streptomycin at 37°C/5% CO<sub>2</sub>. Primary human skin mast cells (SMCs), obtained from discarded surgical skin of 24 subjects (10 African Americans, 14 Caucasian or Latino), who ranged in age from 21 to 60 years, with written informed consent as approved by the Virginia Commonwealth University Internal Review Board, were cultured in serum-free X-Vivo-15 medium (Lonza Inc., Allendale, NJ) containing recombinant human SCF (100 ng/ml)(provided by Swedish Orphan Biovitrum, Stockholm, Sweden) as described [25].

Genomic DNA from SMCs, HMC-1, or Mono Mac-6 cells was purified using the Wizard Genomic DNA Purification Kit (Promega, Madison, WI). Oligonucleotides were synthesized and sequenced by the Nucleic Acid Core facility at Virginia Commonwealth University. DY682 (IRD700 replacement, MWG Operon, Huntsville, AL), [19] and digoxigenin- (Integrated DNA Technologies, Coralville, IA) 3'-labeled primers, stored frozen (−20°C) at a 100 mM concentration in 10 mM Tris-HCl, pH 8.0, were obtained as indicated.

## PCR

Allele-specific PCR genotyping was performed using standard PCR and ethidium bromide labeling of the accumulated PCR product(s), or using DY682- or digoxigenin-labeled primers as described below. Briefly, an initial PCR was performed using unlabeled primers, the resultant product providing the template for the final PCR cycle, in which DY682- or digoxigenin- labeled primers were introduced. PCR was conducted with 2.5 ng of gDNA in a total volume of 25  $\mu$ l, containing PCR reaction buffer with dNTP (200  $\mu$ M), Taq DNA polymerase (0.75 U) and each primer (sense, 5'-GCCCTGCCCTGTGAGGCC-3'; antisense, 5'-CCGTGTAGGCGCCAAGGTG-3') (0.5  $\mu$ M). These primers, as described [16], uniquely recognize  $\alpha/\beta$ -tryptase genes, and do not recognize other tryptases, including  $\delta$ - and  $\gamma$ - tryptases. The sense and antisense primers complement nucleotide sequences located in intron 1 and exon 5, respectively, and amplify a 1028 bp region from  $\beta$ -tryptase gDNA and a 1017-8 bp region in  $\alpha$ -tryptase gDNA (due to a 10 or 11 bp deletion in intron 4), but an EcoRV restriction site resides only in the  $\alpha$ -tryptase amplicon, being located in exon 4. EcoRV cleavage of the  $\alpha$ -tryptase gene product yields fragments of 678 bp (5' side, unlabeled) and 339–40 bp (3' side, labeled). PCR using unlabeled primers begins with a denaturation step at 94°C for 5 min (one cycle), followed by 35 cycles consisting of 94°C for 30 sec, 60°C for 60 sec and 72°C for 60 sec. To eliminate  $\alpha/\beta$ -tryptase heteroduplexes from the final labeled PCR product, the final PCR cycle was performed after DY682 3'-labeled or digoxigenin 3'-labeled primer was added to the PCR react mixture, thereby ensuring that only homoduplexes were labeled.

Human mast cell tryptase genes are GC-rich (67–68%), making its amplification more difficult. The use of several additives during PCR was explored to improve amplification, including betaine, DMSO, glycerol and ethylene glycol. These agents were diluted in water and added in varying concentrations to PCR

reaction mixtures, final concentrations being 1–10% for DMSO or 0.5–2.5 M for the others.

### Restriction enzyme digestion and analysis of PCR products

The PCR products derived from gDNA were digested with EcoRV (GAT//ATC recognition sequence) for 3–4 h, according to the manufacturer's instructions, and then subjected to electrophoresis in 1.2% agarose gels. For PCR genotyping, the fluorescent bands in the gel were directly imaged using the FluorChem<sup>TM</sup> Q system and analyzed with AlphaView SA software (ProteinSimple, Santa Clara, CA) after ethidium bromide labeling or the Odyssey system (LI-COR Biosciences, Lincoln, NE) after labeling with the DY682-tagged 3'-primer. After PCR using the digoxigenin-labeled primer, DNA products were transferred to a positively charged nylon membrane using a semi-dry transfer cell (Bio-Rad Laboratories Inc., Hercules, CA) under a constant amperage (50 mA, 25 V max for 1 h). The nylon membrane was then baked in a vacuum to link the DNA to the membrane, blocked for 1 h at room temperature in 2x Licor blocking reagent, and then incubated with goat polyclonal anti-digoxigenin IgG at 1:1000 dilution for 2 h. After washing, the membrane was incubated with IRD700-conjugated secondary donkey IgG anti-goat IgG at a 1:10,000 dilution for 30 min before being washed, imaged and analyzed on the Odyssey system. Neither DY682- nor digoxigenin-labeled product appeared to inhibit EcoRV restriction endonuclease activity.

### DNA sequencing

Sequencing of PCR products was used to detect allelic differences. The presence of  $\alpha$ - and  $\beta$ - tryptase genes in cell lines was analyzed in PCR products obtained after 35 cycles of 94°C for 30 sec, 58°C for 60 sec, and 72°C for 60 sec as described above using non-labeled primer sets. The PCR products were analyzed by direct sequencing with a BigDye Terminator Cycle Sequencing Kit (Life Technologies, Grand Island, NY) on an automated sequencer, the 3130xl Genetic Analyzer (Applied Biosystems, Life Technologies).

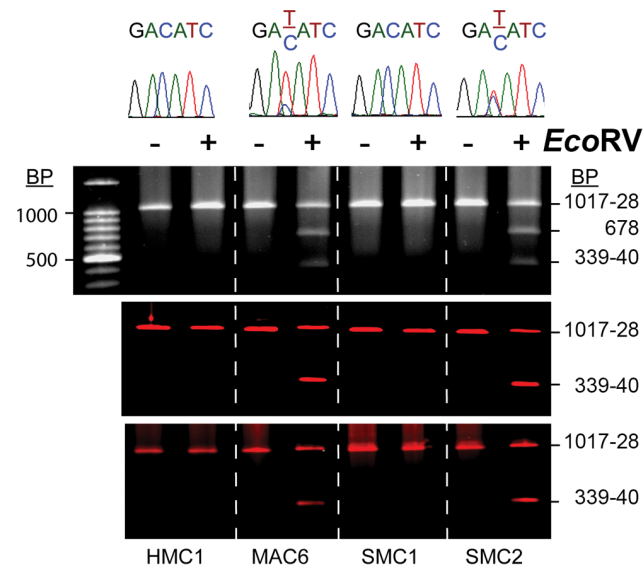
### Statistics

Data groups followed a normal distribution and were analyzed by either a student's T test if only two groups were involved or ANOVA (all pairwise comparisons used the Holm-Sidak test) if there were more than two groups.

## Results

### Detection of $\alpha/\beta$ -tryptase genes in gDNA

As expected, HMC-1 cell DNA after PCR/EcoRV yields a single band of 1017–28 bp ([Fig. 1](#), all three panels), while Mac-6 cell DNA, known to have an  $\alpha\beta:\alpha\beta$  tryptase genotype (9), yields bands of 1017–28, 678 and 339–40 bp after ethidium



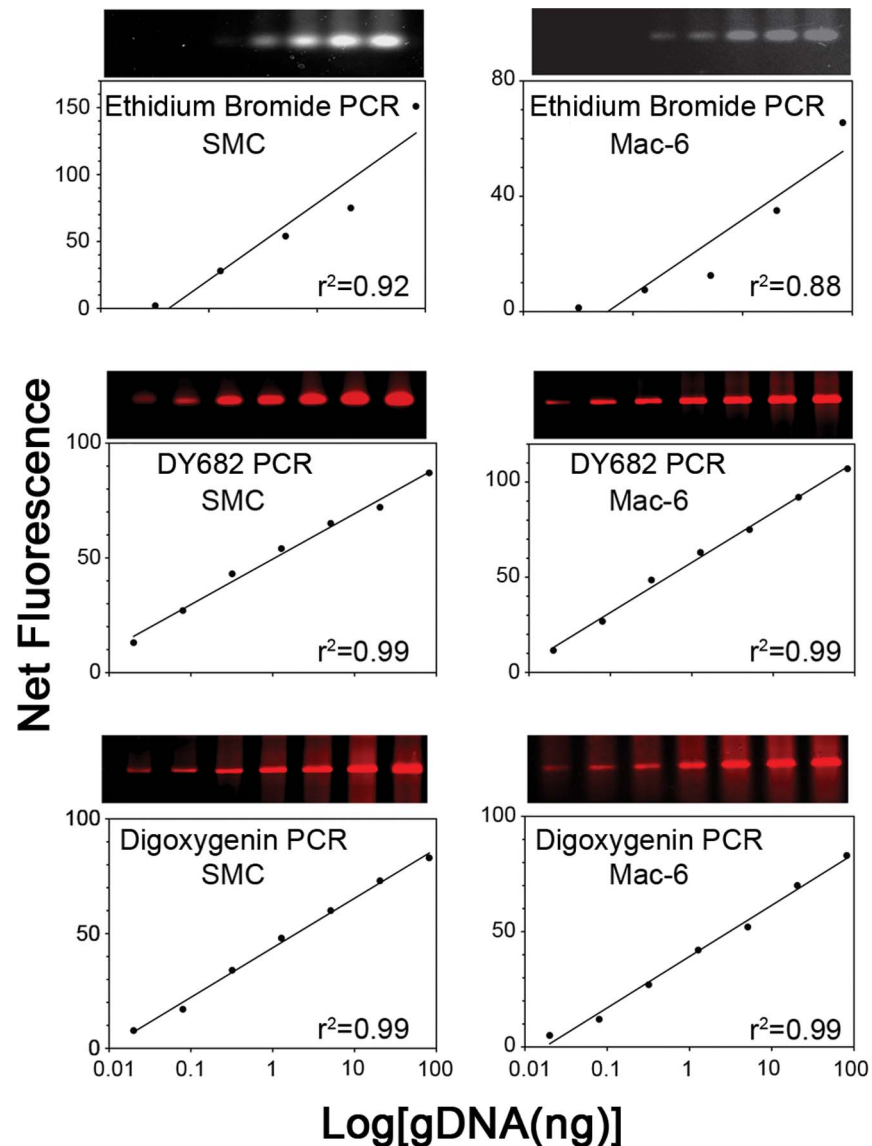
**Fig. 1. Standard and new PCR/restriction enzyme-based methods for  $\alpha$  and  $\beta$  tryptase genotyping.** Genomic DNA extracts from HMC-1, Mac-6 and two SMC preparations were each tested for the presence of  $\beta$  and  $\alpha$ -tryptase genes by three different methods, each using the same 5' and 3' PCR primer pair as described in [Methods](#). When the 1017-28 bp amplimers were exposed to EcoRV, the  $\alpha$ -tryptase amplimer yielded 678 and 339-40 bp fragments. After labeling with ethidium bromide, all such products were detected (upper panel). In contrast, only the high molecular weight amplimer and 339-40 bp fragment were visualized using either DY682- (middle panels) or digoxigenin- (lower panels) labeled 3'-primer. DNA sequence analyses of the restriction site are shown above the corresponding gel electrophoresis pattern.

doi:10.1371/journal.pone.0114944.g001

bromide labeling ([Fig. 1](#), upper panel) or bands of 1017-28 and 339-40 bp with DY682- or digoxigenin- labeled 3'-primer ([Fig. 1](#), middle or lower panel, respectively), indicating that HMC-1 cells contain only the  $\beta$ -tryptase gene, while Mac-6 cells contain both  $\alpha$ - and  $\beta$ -tryptase genes. DNA extracted from SMCs from two different subjects show only  $\beta$  tryptase DNA from SMC1, and both  $\alpha$  and  $\beta$  tryptase DNA from SMC2. The presence of only  $\beta$  tryptase genes or of a mixture of  $\alpha$  and  $\beta$  tryptase genes was confirmed by DNA sequencing, as indicated by the sequencing results above the panels in [Fig. 1](#), showing the presence of the GATATC EcoRV sensitive  $\alpha$ -tryptase DNA site along with the GACATC insensitive  $\beta$ -tryptase DNA site in the DNA PCR product from Mac-6 and SMC2 cell DNA, but only the GACATC insensitive site from HMC-1 and SMC1 cell DNA. These results demonstrate that the new nonradioactive PCR genotyping methods could be efficient tools for allele discrimination in genotyping.

### Sensitivity of $\alpha/\beta$ -tryptase gene detection by PCR

To assess the sensitivity of PCR using the DY682 or digoxigenin labeled primer compared to ethidium bromide labeling, the amount of genomic DNA was varied, as shown in [Fig. 2](#). The band intensities obtained by the DY682 and digoxigenin labeled primer showed strong linear relations with the log of the DNA dose ( $r^2$  values of 0.99), whereas ethidium bromide-labeled band intensities showed less

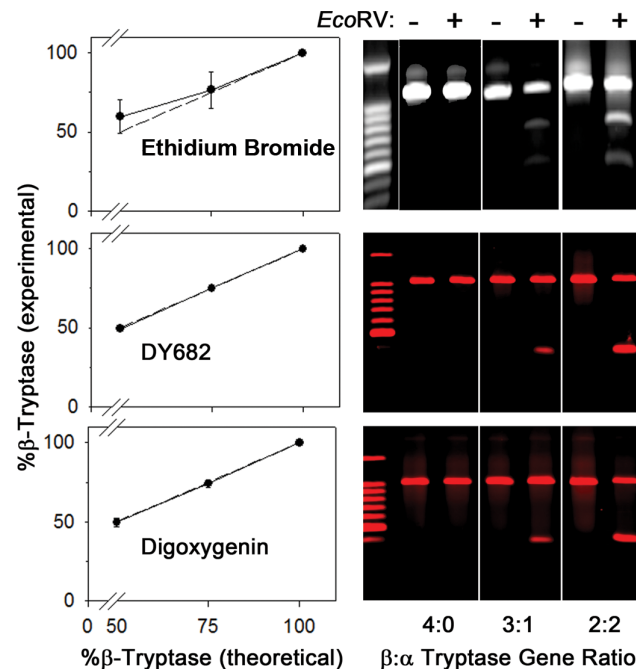


**Fig. 2. Sensitivity of standard ethidium bromide and new PCR amplicar detection methods for  $\alpha/\beta$ -tryptase genes.** Purified gDNA from a SMC preparation having both  $\alpha$ - and  $\beta$ - tryptase genes and from MAC-6 cells, in each case at doses ranging from 0.02 to 81.9 ng, were subjected to PCR and labeled using ethidium bromide (top panels), or to PCR with DY682- (middle panels) or digoxigenin- (bottom panels) labeled 3'-primer. In each case labeled 1017-28 bp amplicar bands are shown along with the net fluorescence in the corresponding plots, representing three independent experiments (data in [S1 Table](#)).

doi:10.1371/journal.pone.0114944.g002

linearity. Furthermore, the standard PCR/ethidium bromide method was able to detect a specific PCR product with as little as 1.3 ng gDNA, whereas the DY682 and digoxigenin-labeled primers enabled detection of the PCR product with only 0.02 ng of DNA, providing an approximately 60-fold increase in sensitivity.





**Fig. 3.  $\alpha/\beta$ -Tryptase genotyping using EcoRV-digested amplimers.** EcoRV-digested amplimers were labeled with ethidium bromide after gel electrophoresis (top panels) or, during the final PCR cycle with DY682 (middle panels) or digoxigenin (bottom panels) labeled 3'-primer. gDNA from SMCs with known  $\beta\beta\beta$ ,  $\beta\beta\alpha$  and  $\beta\alpha\alpha$  genotypes, defined as 4:0, 3:1 and 2:2  $\beta$ : $\alpha$  ratios, were utilized. Experimentally calculated percentages of the  $\beta$ -tryptase gene were plotted against the known percentages of  $\beta$ -tryptase ( $n=3$ , mean  $\pm$  SD). Standard deviations were too small to visualize the error bars in the 50 and 75% $\beta$ -Tryptase (theoretical) values for the middle plot. Data is stored in [S2 Table](#).

doi:10.1371/journal.pone.0114944.g003

### Comparative accuracy of $\alpha$ : $\beta$ tryptase genotype determination by PCR/EcoRV

The accuracy of the three genotyping methods was compared in [Fig. 3](#) using gDNA from SMCs with  $\beta$ : $\alpha$  tryptase gene ratios of 4:0 ( $\beta\beta\beta$ ), 3:1 ( $\beta\beta\alpha$ ), and 2:2 ( $\beta\alpha\alpha$ ). Using 3'-labeled primers, experimental percentages of  $\beta$ -tryptase genes were essentially identical to those predicted, whereas after ethidium bromide labeling the experimental percentages deviated upward from the predicted percentage of the  $\beta$ -tryptase genes when the genotype was 2:2 ( $\beta\alpha\alpha$ ), and exhibited greater variability at both the 2:2 and 3:1 ratios such that the mean percentages at these ratios were not significantly different than one another ( $p=0.14$ , Student t-test). The actual measured percentages of  $\beta$ -tryptase genes for known  $\beta$ : $\alpha$  tryptase gene ratios of 2:2; 3:1 and 4:0, respectively, using DY682-labeled primer were  $49.6 \pm 0.7$ ,  $75.1 \pm 0.6$ , and  $100 \pm 0$ , using digoxigenin-labeled primer were  $49.6 \pm 2.5$ ,  $74.1 \pm 2.4$  and  $100 \pm 0$ , and using ethidium bromide labeling were  $59.0 \pm 10.8$ ,  $76.1 \pm 11.9$  and  $100 \pm 0$ . In contrast to the comparison of gene ratios at 3:1 and 2:2 with ethidium bromide-labeled bands, which were not significantly different from one another ( $p=0.06$ ), those with DY682- or digoxigenin- labelled bands were each significantly different than one another ( $p<0.001$ ) by ANOVA. Each of the three techniques enabled distinction between

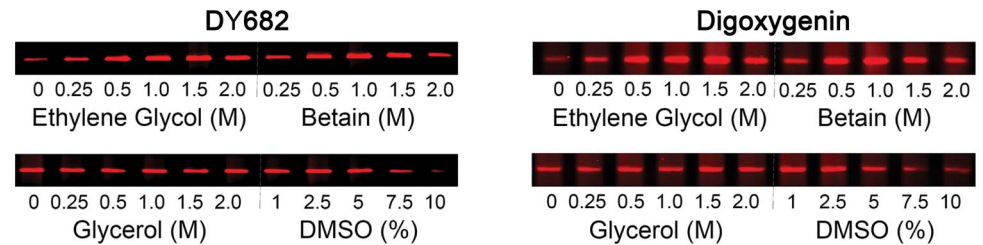
3:1 and 4:0 genotypes ( $p < 0.04$  for ethidium bromide;  $p < 0.001$  for DY682 and digoxigenin). Because the  $\alpha$ - and  $\beta$ -tryptase genes are 93% homologous, heteroduplexes of  $\alpha/\beta$ -tryptase gene products likely formed during the annealing phase of PCR, and these heteroduplexes are resistant to EcoRV enzymatic digestion, leading to a higher apparent level of  $\beta$ -tryptase genes.

### Using enhancers to improve the sensitivity of PCR of $\alpha/\beta$ -tryptase genes

The %GC content of the amplified tryptase gene sequences is about 68%, which can decrease the PCR efficiency. To optimize PCR in the current study, several additives were examined, including ethylene glycol, betaine, glycerol and DMSO, as described for PCR of other GC-rich DNA domains [26–29]. Ethylene glycol or betaine facilitate strand separation by altering the DNA melting characteristics and increasing the resistance of *Taq* polymerase to denaturation, while DMSO weakens hydrogen bonding, improving the specificity of primer annealing and preventing premature terminations due to intra and inter strand annealing [28, 29]. To determine at what concentration these additives optimized the generation of full-length amplicons from  $\alpha/\beta$ -tryptase genes using gDNA from SMCs or MAC-6 cells, DMSO (1 to 10%) and ethylene glycol (0.5–2.0 M), betaine (0.5–2.0 M) and glycerol (0.5–2.0 M) conditions were examined, as shown in Fig. 4. Ethylene glycol (0.5–1.5 M) and betaine (0.5–1.5 M) greatly and comparably improved the efficiency of amplification of the 1017–28 bp tryptase gene products, 1 M ethylene glycol by  $2.9 \pm 0.5$  fold for DY682 and  $2.5 \pm 0.2$  fold for digoxigenin and 1 M betaine by  $2.9 \pm 0.3$  fold for DY682 and  $2.6 \pm 0.3$  for digoxigenin, calculated as the band signal intensity ratio ('with' over 'without' each enhancing agent, mean  $\pm$  STD) using the Odyssey system. DMSO inhibited the PCR amplification at high concentrations, whereas neither DMSO nor glycerol had an apparent enhancing effect. Thus, ethylene glycol and betaine were the most effective PCR enhancers, and 1.0 M betaine was chosen for the standard method.

### Genotyping of individuals

PCR using DY682-labelled primer was performed to investigate the  $\alpha/\beta$  tryptase genotype on 24 subjects, as shown in Fig. 5. Subjects grouped into the 2:2 and 1:3  $\alpha:\beta$ -tryptase genotypes showed no overlap, mean  $\pm$  STD (range) values being  $1.02 \pm 0.05$  (0.93–1.07) and  $2.97 \pm 0.09$  (2.8–3.1), respectively, and means were significantly different ( $P < 0.001$ ). All subjects had  $\beta$ -tryptase gene amplicons, while 17 of the subjects also had an  $\alpha$ -tryptase gene. The frequency of the  $\alpha$ -tryptase allele ( $\alpha_f$ ) at the single locus where this gene resides was 0.52, whereas the overall frequency of the  $\alpha$ -tryptase allele at both  $\alpha/\beta$ -tryptase loci ( $\alpha'_f$ ) was 0.26; yielding an overall  $\beta'_f$  value of 0.74. The respective 2:2, 3:1 and 4:0  $\beta:\alpha$  tryptase gene ratios were 0.25, 0.46, and 0.29, showing Hardy-Weinberg Equilibrium



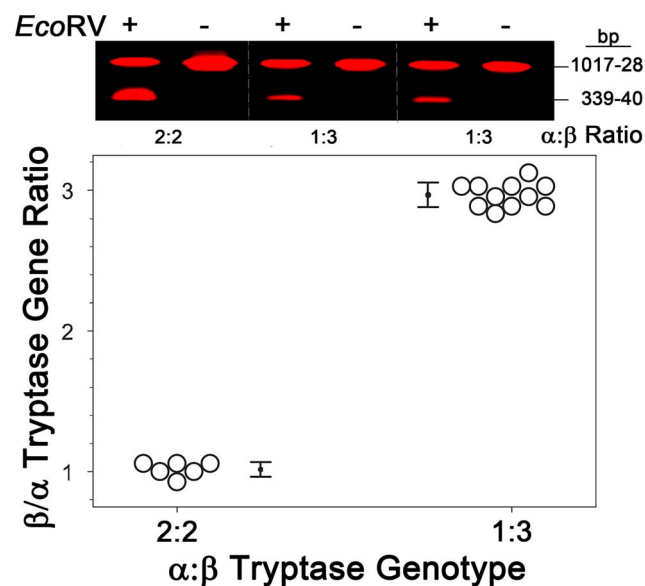
**Fig. 4. A comparison of potential enhancers on the PCR of  $\alpha/\beta$ -tryptase gDNA using DY682-labeled (left panels) or digoxigenin-labeled (right panels) 3'-primer.** The effects of ethylene glycol (0.5 to 2.5 M), betaine (0.5 to 2.5 M), glycerol (0.5 to 2.5 M), DMSO (0.5 to 10%) or no additive was examined on PCRs performed with gDNA amounts of 0.3–0.5 ng and Taq DNA polymerase of 0.75 U per PCR with ethylene glycol or betaine, or 1.2–2.0 ng of gDNA and 1.25 U of Taq DNA polymerase per PCR with glycerol or DMSO. Representative images of the 1017–28 bp amplicers from three independent experiments are shown. Band intensity data is stored in [S3 Table](#).

doi:10.1371/journal.pone.0114944.g004

( $X^2=0.62$ ;  $P=0.43$  with 1 degree of freedom), [30] consistent with prior reports [16, 17].

## Discussion

PCR of homologous  $\alpha/\beta$ -tryptase genes, using a primer set that recognizes both alleles, results in a mixture of homo- and hetero- duplexes. Using EcoRV to discriminate the  $\alpha$ -tryptase amplicer, containing a susceptible restriction site,



**Fig. 5. Tryptase genotyping in healthy subjects.**  $\alpha/\beta$ -Tryptase genotyping was performed with gDNA obtained from SMCs of 24 subjects. EcoRV digestions of PCR amplicers labeled during the final cycle with DY682-labeled 3'-primer were performed. Gel images are shown for 3 of the 24 samples analyzed, 2 with a  $\beta:\alpha$  ratio of 3:1 and 1 with a ratio of 2:2. The 17 samples in which the  $\alpha$ -tryptase gene was detected are shown in the plot, where those with a 2:2 or 3:1 genotype are grouped together. Data is stored in [S4 Table](#).

doi:10.1371/journal.pone.0114944.g005

from the  $\beta$ -tryptase amplicon, having no such restriction site, can be problematic due to the formation of  $\alpha/\beta$ -tryptase heteroduplexes as  $\alpha$  and  $\beta$ - tryptase amplicons can anneal to one another, and these heteroduplexes lack susceptibility to cleavage by this restriction enzyme. By utilizing a labeled primer during the final PCR cycle, the labeled amplicons contain only homoduplexes of  $\alpha$  or  $\beta$  tryptase gene products. This most likely explains why ethidium bromide labeling failed to discriminate between  $\alpha\beta:\alpha\beta$  (2:2) and  $\alpha\beta:\beta\beta$  (1:3) tryptase genotypes (Fig. 3); variable formation of  $\alpha/\beta$ -tryptase heteroduplexes likely increased the apparent amount of the  $\beta$  gene product. In contrast, the 2:2 and 3:1  $\beta:\alpha$  genotypes were discriminated from one another by both the DY682 and the digoxigenin techniques (Fig. 3 and 5). Also, the DY682- or digoxigenin- labeled 3' primer together with infrared fluorescent signaling as employed in the current study resulted in a very low background and a strong fluorescent signal, improving sensitivity compared to ethidium bromide labeling of amplicons and their fragments by about 60-fold, while avoiding the hazards of working with radioactivity. However, because the fluorescence of DY682-labeled products could be assessed directly in the gel, while detection of digoxigenin-labeled products required blotting followed by immunolabeling, the former takes only a few hours to perform and was considered the best technique. Thus, the PCR/restriction enzyme technique for determining the  $\alpha/\beta$ -tryptase genotype is sensitive, accurate, efficient and safe, and should permit high throughput screening to detect potential phenotypes due to the presence of the  $\alpha$ -tryptase gene, and be applicable to analogous situations with other closely related alleles.

## Supporting Information

**S1 Table. Fig. 2 data.**

[doi:10.1371/journal.pone.0114944.s001](https://doi.org/10.1371/journal.pone.0114944.s001) (PDF)

**S2 Table. Fig. 3 data.**

[doi:10.1371/journal.pone.0114944.s002](https://doi.org/10.1371/journal.pone.0114944.s002) (PDF)

**S3 Table. Fig. 4 data.**

[doi:10.1371/journal.pone.0114944.s003](https://doi.org/10.1371/journal.pone.0114944.s003) (PDF)

**S4 Table. Fig. 5 data.**

[doi:10.1371/journal.pone.0114944.s004](https://doi.org/10.1371/journal.pone.0114944.s004) (PDF)

## Acknowledgments

We thank Constance Hartmann for her excellent technical assistance.

## Author Contributions

Conceived and designed the experiments: QTL LBS. Performed the experiments: QTL SLE HKM. Analyzed the data: QTL LBS. Contributed reagents/materials/analysis tools: QTL SLE HKM. Wrote the paper: QTL SLE HKM LBS.

## References

1. **Pallaoro M, Fejzo MS, Shayesteh L, Blount JL, Caughey GH** (1999) Characterization of genes encoding known and novel human mast cell tryptases on chromosome 16p13.3. *J Biol Chem* 274: 3355–3362.
2. **Schwartz LB** (2006) Diagnostic value of tryptase in anaphylaxis and mastocytosis. *Immunol Allergy Clin North Am* 26: 451–463.
3. **Pereira PJ, Bergner A, Macedo-Ribeiro S, Huber R, Matschiner G, et al.** (1998) Human  $\beta$ -tryptase is a ring-like tetramer with active sites facing a central pore. *Nature* 392: 306–311.
4. **Huang C, Li L, Krilis SA, Chanasyk K, Tang Y, Li Z, et al.** (1999) Human tryptases alpha and beta/II are functionally distinct due, in part, to a single amino acid difference in one of the surface loops that forms the substrate-binding cleft. *J Biol Chem* 274: 19670–19676.
5. **Marquardt U, Zettl F, Huber R, Bode W, Sommerhoff C** (2002) The crystal structure of human alpha-1-tryptase reveals a blocked substrate-binding region. *J Mol Biol* 321: 491–502.
6. **Le QT, Min HK, Xia HZ, Fukuoka Y, Katunuma N, et al.** (2011) Promiscuous processing of human alphabeta-protryptases by cathepsins L, B, and C. *J Immunol* 186: 7136–7143. [jimmunol.1001804 \[pii\]; 10.4049/jimmunol.1001804 \[doi\]](https://doi.org/10.4049/jimmunol.1001804).
7. **Trivedi NN, Tamraz B, Chu C, Kwok PY, Caughey GH** (2009) Human subjects are protected from mast cell tryptase deficiency despite frequent inheritance of loss-of-function mutations. *J Allergy Clin Immunol* 124: 1099–1105.
8. **Min HK, Kambe N, Schwartz LB** (2001) Human mouse mast cell protease 7-like tryptase genes are pseudogenes. *J Allergy Clin Immunol* 107: 315–321.
9. **Trivedi NN, Raymond WW, Caughey GH** (2008) Chimerism, point mutation, and truncation dramatically transformed mast cell delta-tryptases during primate evolution. *J Allergy Clin Immunol* 121: 1262–1268.
10. **Wang HW, McNeil HP, Husain A, Liu K, Tedla N, et al.** (2002) Delta tryptase is expressed in multiple human tissues, and a recombinant form has proteolytic activity. *J Immunol* 169: 5145–5152.
11. **Caughey GH, Raymond WW, Blount JL, Hau LWT, Pallaoro M, et al.** (2000) Characterization of human gamma-tryptases, novel members of the chromosome 16p mast cell tryptase and prostasin gene families. *J Immunol* 164: 6566–6575.
12. **Wong GW, Foster PS, Yasuda S, Qi JC, Mahalingam S, et al.** (2002) Biochemical and functional characterization of human transmembrane tryptase (TMT)/tryptase gamma. TMT is an exocytosed mast cell protease that induces airway hyperresponsiveness in vivo via an IL-13/IL-4Ralpha/STAT6-dependent pathway. *J Biol Chem*.
13. **Abdelmotelb AM, Rose-Zerilli MJ, Barton SJ, Holgate S, Walls AF, et al.** (2013) Alpha-tryptase gene variation is associated with levels of circulating IgE and lung function in asthma. *Clin Exp Allergy*. [10.1111/cea.12259 \[doi\]](https://doi.org/10.1111/cea.12259).
14. **Guida M, Riedy M, Lee D, Hall J** (2000) Characterization of two highly polymorphic human tryptase loci and comparison with a newly discovered monkey tryptase ortholog. *Pharmacogenetics* 10: 389–396.
15. **Moxley G, Miller JS, Diehl S, Schwartz LB** (1990) *EcoRV* polymorphism detected by cDNA probe for human tryptase beta (TP52). *Nucleic Acids Res* 18: 7197.
16. **Soto D, Malmsten C, Blount JL, Muilenburg DJ, Caughey GH** (2002) Genetic deficiency of human mast cell  $\alpha$ -tryptase. *Clin Exp Allergy* 32: 1000–1006.
17. **Min HK, Moxley G, Neale MC, Schwartz LB** (2004) Effect of sex and haplotype on plasma tryptase levels in healthy adults. *J Allergy Clin Immunol* 114: 48–51.
18. **Onouchi Y, Ozaki K, Buns JC, Shimizu C, Hamada H, et al.** (2010) Common variants in *CASP3* confer susceptibility to Kawasaki disease. *Hum Mol Genet* 19: 2898–2906. [ddq176 \[pii\]; 10.1093/hmg/ddq176 \[doi\]](https://doi.org/10.1093/hmg/ddq176).
19. **Ying BW, Fourmy D, Yoshizawa S** (2007) Substitution of the use of radioactivity by fluorescence for biochemical studies of RNA. *RNA* 13: 2042–2050. [ma.637907 \[pii\]; 10.1261/ma.637907 \[doi\]](https://doi.org/10.1261/ma.637907).
20. **Komminoth P, Merk FB, Leav I, Wolfe HJ, Roth J** (1992) Comparison of 35S- and digoxigenin-labeled RNA and oligonucleotide probes for in situ hybridization. Expression of mRNA of the seminal vesicle secretion protein II and androgen receptor genes in the rat prostate. *Histochemistry* 98: 217–228.

21. **Zhou Y, Calciano M, Hamann S, Leamon JH, Strugnelli T, et al.** (2001) In situ detection of messenger RNA using digoxigenin-labeled oligonucleotides and rolling circle amplification. *Exp Mol Pathol* 70: 281–288. 10.1006/exmp.2001.2365 [doi]; S0014-4800(01)92365-2 [pii].
22. **Butterfield JH, Weiler D, Dewald G, Gleich GJ** (1988) Establishment of an immature mast cell line from a patient with mast cell leukemia. *Leukemia Res* 12: 345–355.
23. **Ziegler-Heitbrock HW, Thiel E, Futterer A, Herzog V, Wirtz A, et al.** (1988) Establishment of a human cell line (Mono Mac 6) with characteristics of mature monocytes. *Int J Cancer* 41: 456–461.
24. **Jogie-Brahim S, Min HK, Fukuoka Y, Xia HZ, Schwartz LB** (2004) Expression of alpha-tryptase and beta-tryptase by human basophils. *J Allergy Clin Immunol* 113: 1086–1092.
25. **Fukuoka Y, Hite MR, Dellinger AL, Schwartz LB** (2013) Human skin mast cells express complement factors C3 and C5. *J Immunol* 191: 1827–1834. jimmunol.1202889 [pii]; 10.4049/jimmunol.1202889 [doi].
26. **Zhang Z, Yang X, Meng L, Liu F, Shen C, et al.** (2009) Enhanced amplification of GC-rich DNA with two organic reagents. *BioTechniques* 47: 775–779. 000113203 [pii]; 10.2144/000113203 [doi].
27. **Henke W, Herdel K, Jung K, Schnorr D, Loening SA** (1997) Betaine improves the PCR amplification of GC-rich DNA sequences. *Nucleic Acids Res* 25: 3957–3958. gka606 [pii].
28. **Jensen MA, Fukushima M, Davis RW** (2010) DMSO and betaine greatly improve amplification of GC-rich constructs in de novo synthesis. *PLoS One* 5: e11024. 10.1371/journal.pone.0011024 [doi].
29. **Simonovic A, Trifunovic M, Raspor M, Cingel A, Bogdanovic M, et al.** (2012) Dimethyl sulfoxide improves sensitivity and specificity of RT-PCR and QRT-PCR amplification of low-expressed transgenes. *Arch Biol Sci* 64: 865–876.
30. **Court MH** (2008) Simple Hardy-Weinberg Calculator - Court Lab.