

© 2014 by The University of Chicago. All rights reserved. DOI: 10.1086/675570

Appendix from Siegel-Hawley, “Mitigating *Milliken*? School District Boundary Lines and Desegregation Policy in Four Southern Metropolitan Areas, 1990–2010”

(*American Journal of Education*, vol. 120, no. 3, p. 391)

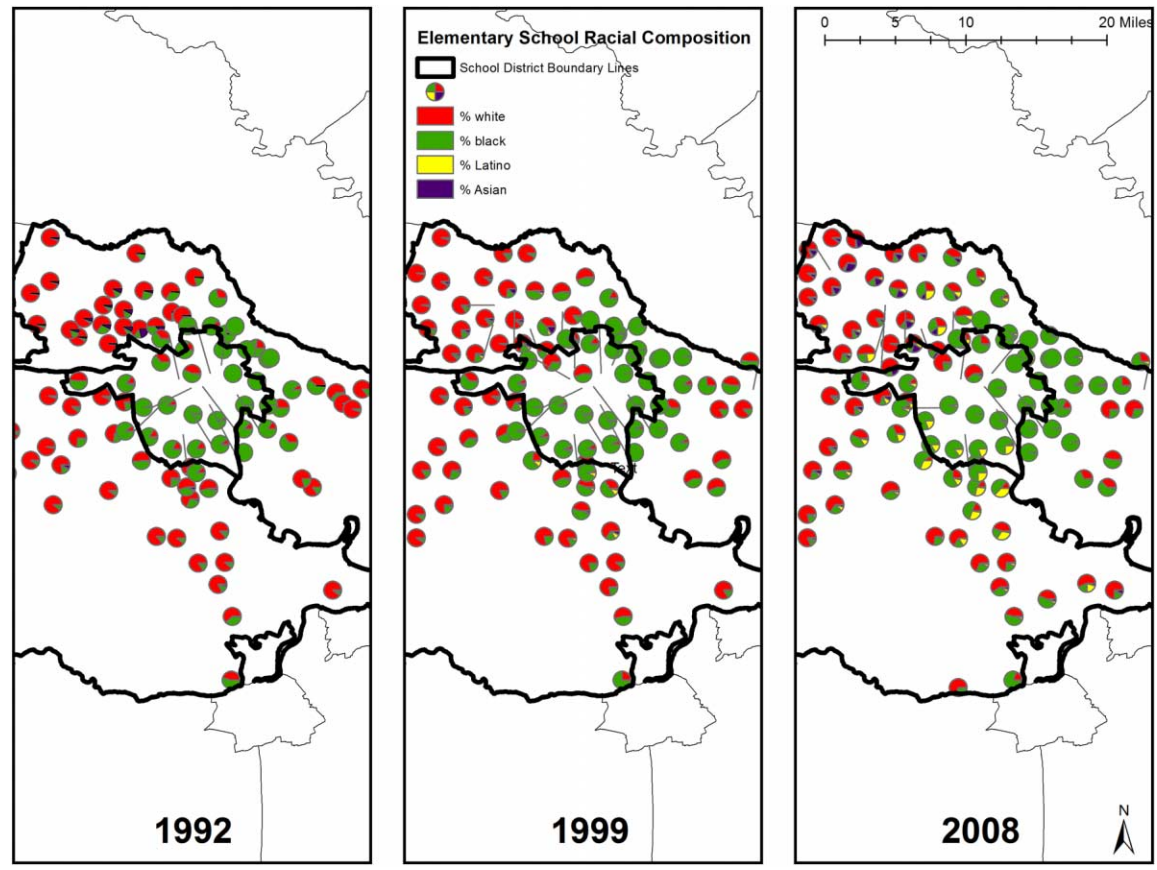


FIG. A1.—Elementary school racial composition, Richmond-Henrico-Chesterfield, 1992–2008. SOURCE: National Center for Education Statistics, Common Core of Data, 1992–93, 1999–2000, and 2008–9.

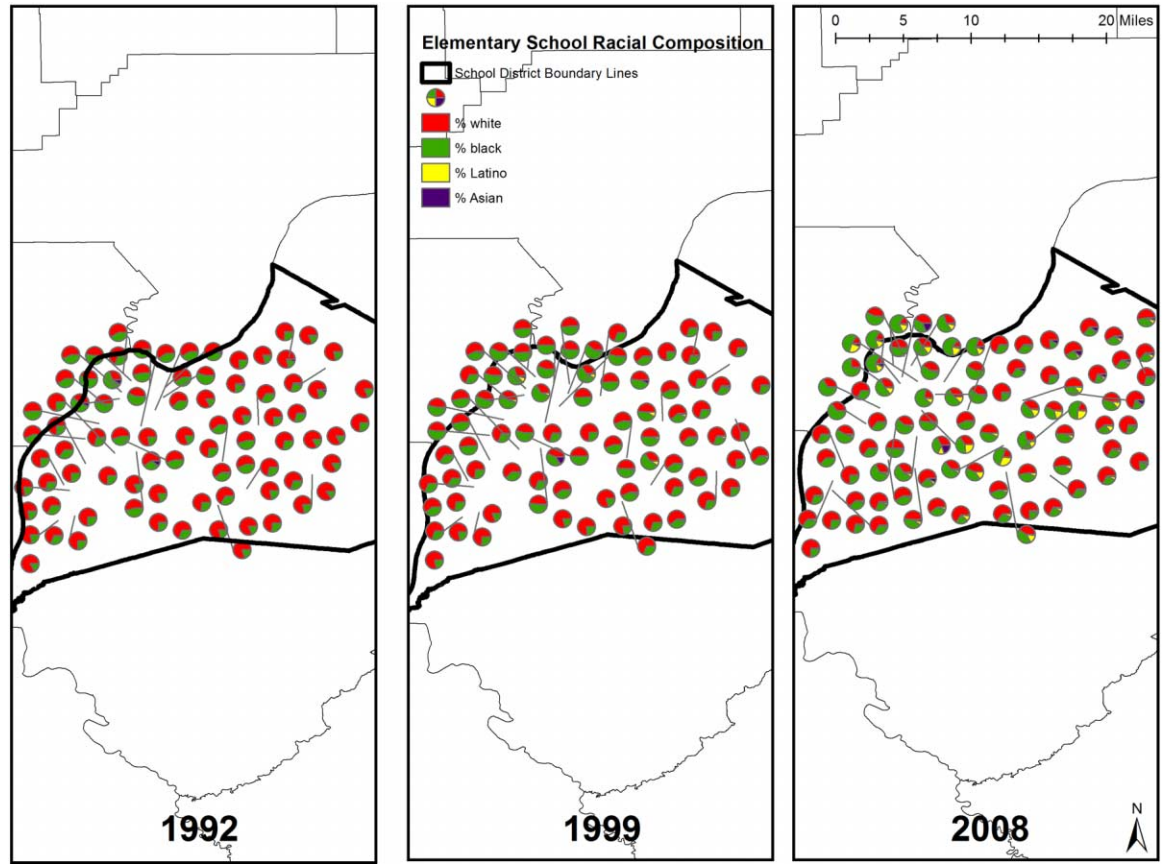


FIG. A2.—Elementary school racial composition, Louisville-Jefferson County, 1992–2008. SOURCE: National Center for Education Statistics, Common Core of Data, 1992–93, 1999–2000, and 2008–9.

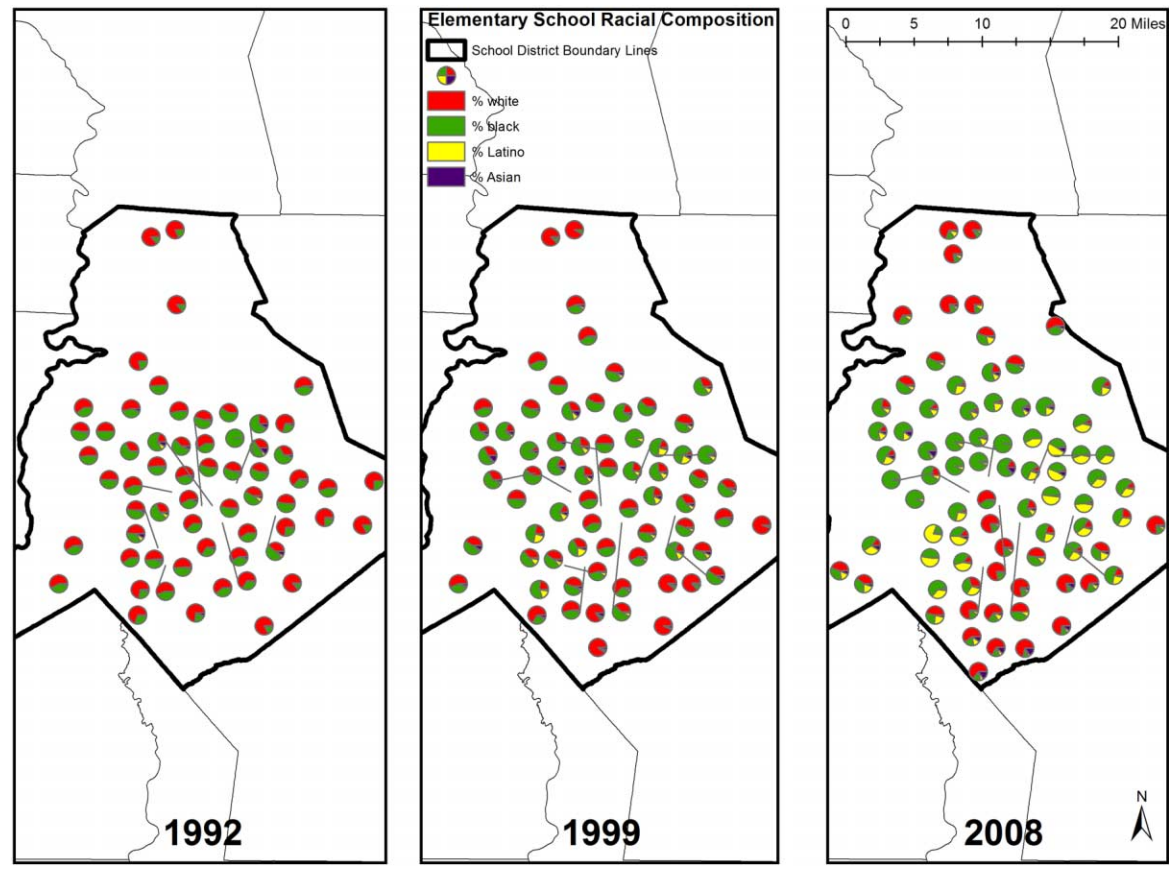


FIG. A3.—Elementary school racial composition, Charlotte-Mecklenburg County, 1992–2008. SOURCE: National Center for Education Statistics, Common Core of Data, 1992–93, 1999–2000, and 2008–9.

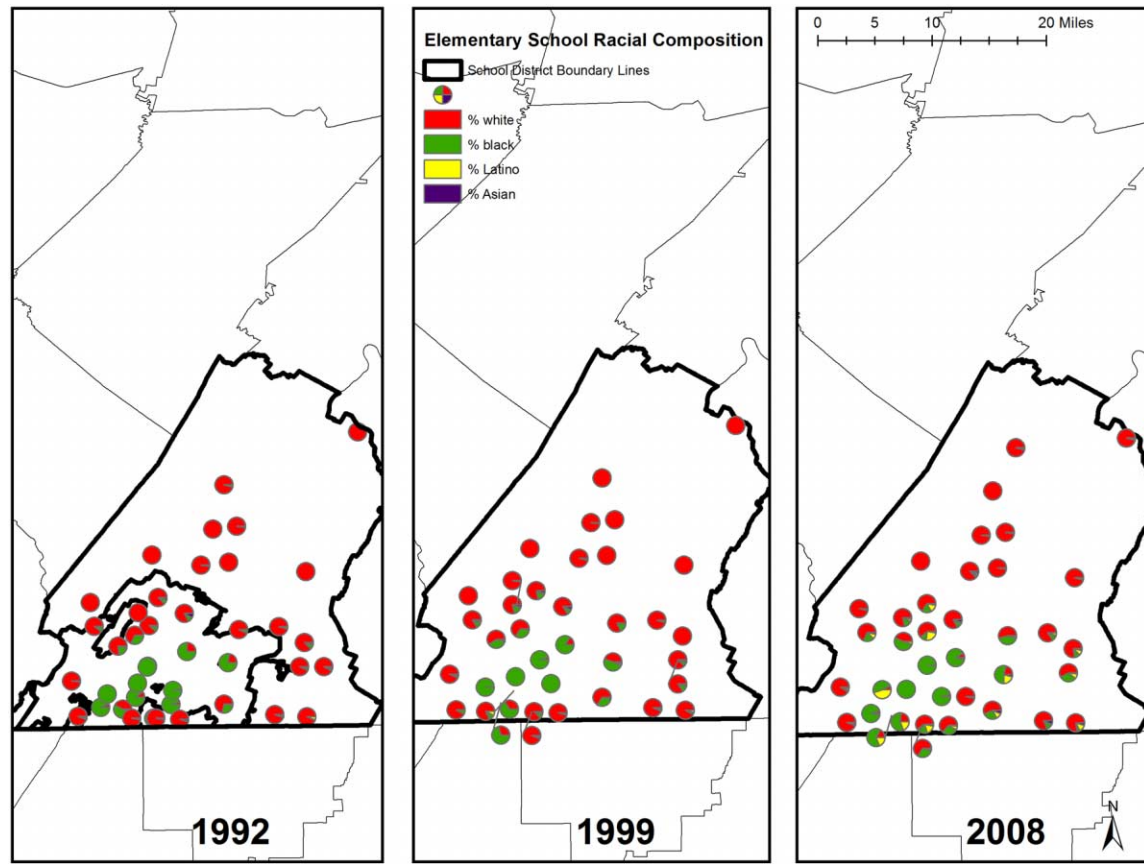


FIG. A4.—Elementary school racial composition, Chattanooga-Hamilton County, 1992–2008. SOURCE: National Center for Education Statistics, Common Core of Data, 1992–93, 1999–2000, and 2008–9.

Table A1. Percentage Students by Race and Poverty Enrolled in 50%–89% or 90%–100% Underrepresented Minority Schools, Richmond City Schools, 1992–93, 1999–2000, and 2008–9

	RICHMOND CITY					
	Percent Students in 50%–89% Underrepresented Minority Schools			Percent Students in 90%–100% Underrepresented Minority Schools		
	1992	1999	2008	1992	1999	2008
White	82.6	29.5	37.3	13.3	40.4	24.8
Black	40.9	10.7	15.1	58.9	87.9	83.6
Latino	75.2	7.1	13.4	24.1	90.3	84.1
Asian	91.4	19.0	30.8	8.3	67.7	50.6
Poor	NA	9.3	12.7	NA	89.6	86.2
Nonpoor	NA	18.7	25.7	NA	71.4	63.0
All students	45.5	12.2	16.9	54.0	84.0	78.7

SOURCE.—National Center for Education Statistics, Common Core of Data, 1992–93, 1998–99, 1999–2000, and 2008–9.

Table A2. Percent Students by Race and Poverty Enrolled in 50%–89% or 90%–100% Underrepresented Minority Schools, Henrico County Schools, 1992–93, 1999–2000, 2008–9

	HENRICO COUNTY					
	Percent Students in 50%–89% Underrepresented Minority Schools			Percent Students in 90%–100% Underrepresented Minority Schools		
	1992	1999	2008	1992	1999	2008
White	10.3	6.7	16.8	.4	.9	0.7
Black	49.0	32.9	51.6	15.7	27.2	27.3
Latino	8.0	8.1	35.1	1.4	5.6	6.3
Asian	6.0	2.2	14.3	.7	1.5	1.1
Poor	NA	24.1	44.3	NA	30.9	26.5
Nonpoor	NA	13.3	25.0	NA	5.3	4.4
All students	21.2	15.1	31.0	4.8	9.6	11.3

SOURCE.—National Center for Education Statistics, Common Core of Data, 1992–93, 1998–99, 1999–2000, and 2008–9.

Table A3. Percent Students by Race and Poverty Enrolled in 50%–89% or 90%–100% Underrepresented Minority Schools, Chesterfield County Schools, 1992–93, 1999–2000, 2008–9

	CHESTERFIELD COUNTY					
	Percent Students in 50%–89% Underrepresented Minority Schools			Percent Students in 90%–100% Underrepresented Minority Schools		
	1992	1999	2008	1992	1999	2008
White	1.6	6.9	10.4	.0	.0	.2
Black	9.2	33.3	41.3	.0	.0	2.8
Latino	2.3	35.2	49.0	.0	.0	5.1
Asian	.4	20.5	19.5	.0	.0	.1
Poor	NA	35.5	50.9	NA	.0	4.8
Nonpoor	NA	10.5	16.5	NA	.0	.6
All students	2.8	13.6	22.5	.0	.0	1.3

SOURCE.—National Center for Education Statistics, Common Core of Data, 1992–93, 1998–99, 1999–2000, and 2008–9.

Table A4. Percent Students by Race and Poverty Enrolled in 50–89% or 90–100% Underrepresented Minority Schools, Chattanooga City and Hamilton County Schools, 1992–93

	CHATTANOOGA CITY		HAMILTON COUNTY	
	Percent Students in 50%–89% Underrepresented Minority Schools	Percent Students in 90%–100% Underrepresented Minority Schools	Percent Students in 50%–89% Underrepresented Minority Schools	Percent Students in 90%–100% Underrepresented Minority Schools
White	21.1	4.7	.0	.0
Black	24.0	65.8	.0	.0
Latino	17.4	17.4	.0	.0
Asian	12.4	1.9	.0	.0
Poor	NA	NA	NA	NA
Nonpoor	NA	NA	NA	NA
All students	22.7	40.9	.0	.0

SOURCE.—National Center for Education Statistics, Common Core of Data, 1992–93, 1998–99, 1999–2000, and 2008–9.