



Virginia Commonwealth University
VCU Scholars Compass

Microbiology and Immunology Publications

Dept. of Microbiology and Immunology

2013

Inhibition of P-Glycoprotein by HIV Protease Inhibitors Increases Intracellular Accumulation of Berberine in Murine and Human Macrophages

Weibin Zha

Virginia Commonwealth University, China Pharmaceutical University

Guangji Wang

China Pharmaceutical University

Weiren Xu

Tianjin Institute of Pharmaceutical Research

See next page for additional authors

Follow this and additional works at: http://scholarscompass.vcu.edu/micr_pubs

 Part of the [Medicine and Health Sciences Commons](#)

This is an open-access article, free of all copyright, and may be freely reproduced, distributed, transmitted, modified, built upon, or otherwise used by anyone for any lawful purpose. The work is made available under the Creative Commons CC0 public domain dedication.

Downloaded from

http://scholarscompass.vcu.edu/micr_pubs/31

This Article is brought to you for free and open access by the Dept. of Microbiology and Immunology at VCU Scholars Compass. It has been accepted for inclusion in Microbiology and Immunology Publications by an authorized administrator of VCU Scholars Compass. For more information, please contact libcompass@vcu.edu.

Authors

Weibin Zha, Guangji Wang, Weiren Xu, Xuyuan Liu, Yun Wang, Beth S. Zha, Jian Shi, Qijin Zhao, Phillip M. Gerk, Elaine Studer, Phillip B. Hylemon, William M. Pandak Jr., and Huiping Zhou

Inhibition of P-Glycoprotein by HIV Protease Inhibitors Increases Intracellular Accumulation of Berberine in Murine and Human Macrophages

Weibin Zha^{1,2}, Guangji Wang^{2*}, Weiren Xu³, Xuyuan Liu^{3,4}, Yun Wang¹, Beth S. Zha¹, Jian Shi², Qijin Zhao², Phillip M. Gerk⁵, Elaine Studer¹, Phillip B. Hylemon^{1,6}, William M. Pandak Jr.⁶, Huiping Zhou^{1,6,7*}

1 Department of Microbiology and Immunology, Virginia Commonwealth University, Richmond, Virginia, United States of America, **2** Key Laboratory of Drug Metabolism and Pharmacokinetics, China Pharmaceutical University, Nanjing, P.R. China, **3** Tianjin Key Laboratory of Molecular Design and Drug Discovery, Tianjin Institute of Pharmaceutical Research, Tianjin, P.R. China, **4** Basic Medical College, Tianjin Medical University, Tianjin, P.R. China, **5** Department of Pharmaceutics, Virginia Commonwealth University, Richmond, Virginia, United States of America, **6** Department of Internal Medicine/Gastroenterology and McGuire Veterans Affairs Medical Center, Richmond, Virginia, United States of America, **7** School of Pharmacy, Wenzhou Medical College, Wenzhou, P.R. China

Abstract

Background: HIV protease inhibitor (PI)-induced inflammatory response in macrophages is a major risk factor for cardiovascular diseases. We have previously reported that berberine (BBR), a traditional herbal medicine, prevents HIV PI-induced inflammatory response through inhibiting endoplasmic reticulum (ER) stress in macrophages. We also found that HIV PIs significantly increased the intracellular concentrations of BBR in macrophages. However, the underlying mechanisms of HIV PI-induced BBR accumulation are unknown. This study examined the role of P-glycoprotein (P-gp) in HIV PI-mediated accumulation of BBR in macrophages.

Methodology and Principal Findings: Cultured mouse RAW264.7 macrophages, human THP-1-derived macrophages, Wild type MDCK (MDCK/WT) and human P-gp transfected (MDCK/P-gp) cells were used in this study. The intracellular concentration of BBR was determined by HPLC. The activity of P-gp was assessed by measuring digoxin and rhodamine 123 (Rh123) efflux. The interaction between P-gp and BBR or HIV PIs was predicated by Glide docking using Schrodinger program. The results indicate that P-gp contributed to the efflux of BBR in macrophages. HIV PIs significantly increased BBR concentrations in macrophages; however, BBR did not alter cellular HIV PI concentrations. Although HIV PIs did not affect P-gp expression, P-gp transport activities were significantly inhibited in HIV PI-treated macrophages. Furthermore, the molecular docking study suggests that both HIV PIs and BBR fit the binding pocket of P-gp, and HIV PIs may compete with BBR to bind P-gp.

Conclusion and Significance: HIV PIs increase the concentration of BBR by modulating the transport activity of P-gp in macrophages. Understanding the cellular mechanisms of potential drug-drug interactions is critical prior to applying successful combinational therapy in the clinic.

Citation: Zha W, Wang G, Xu W, Liu X, Wang Y, et al. (2013) Inhibition of P-Glycoprotein by HIV Protease Inhibitors Increases Intracellular Accumulation of Berberine in Murine and Human Macrophages. PLoS ONE 8(1): e54349. doi:10.1371/journal.pone.0054349

Editor: Richard Y. Zhao, Institute of Human Virology, United States of America

Received: July 22, 2012; **Accepted:** December 12, 2012; **Published:** January 23, 2013

This is an open-access article, free of all copyright, and may be freely reproduced, distributed, transmitted, modified, built upon, or otherwise used by anyone for any lawful purpose. The work is made available under the Creative Commons CC0 public domain dedication.

Funding: This work was supported by National Institutes of Health (NIH) Grants R01AT004148 (H.Z.), R21AI068432 (H.Z.), VA Merit Award 1101BX001390 (H.Z.), The VCU Presidential Research Incentive Program Award (H.Z.), Merck Research Grant, School of Medicine, VCU Bridge funding (H.Z.), and National Science Foundation of China (Grant 81070245 to H.Z.). The funders had no role in study design, data collection and analysis, decision to publish, or preparation of the manuscript.

Competing Interests: The authors have declared that no competing interests exist.

* E-mail: hzhou@vcu.edu (HZ); wangguangji01@gmail.com (GW)

Introduction

Human immunodeficiency virus (HIV) protease inhibitors (PIs) are the major components of highly active anti-retroviral therapy (HAART) and have been successfully used to control disease progression in HIV-1 patients. However, the decline in morbidity and mortality has been clouded by the emergence of a number of metabolic derangements [1]. The prevalence of dyslipidemia in patients receiving HIV PIs is more than 50%, which significantly increases the risk of cardiovascular disease (CVD) [2,3,4,5]. Although cellular/molecular mechanisms underlying HIV PI-

induced CVD remain to be fully elucidated, sufficient evidence suggests that lipid accumulation, inflammation, and activation of endoplasmic reticulum (ER) stress are all involved in HIV PI-induced cardiovascular complications and metabolic syndromes [3,4,5,6,7].

Berberine (BBR) is an alkaloid isolated from medicinal plants such as *Rhizoma coptidis* and *Phellodendron amurense*. Although its traditional use mainly focused in various infectious disorders for a long time [8], the lipid-lowering, anti-diabetic and anti-inflammatory activities were shown in many studies during past decades

[9,10,11]. Several mechanisms including modulation of AMP-dependent protein kinase (AMPK) activity and regulation of tyrosine kinase, Akt and NF- κ B signaling are identified to be associated with the beneficial effects of berberine on improvement of obesity-associated lipid dysregulation and inhibition of vascular and intestinal inflammation [12,13,14,15]. Our previous study also indicated that inhibition of ER stress by BBR represents a key mechanism by which this molecule prevents the HIV PI-induced inflammatory response [16]. Therefore, BBR is a promising complementary agent which may be used with HIV PIs for the treatment of HIV infection.

P-glycoprotein (P-gp) is the most widely investigated member of ATP binding cassette (ABC) membrane efflux transporters and has been identified as a major transporter responsible for the efflux of BBR [17,18]. Similarly, most HIV PIs also have been described as P-gp substrates at both the intestinal barrier and the blood-brain barrier (BBB) [19,20,21]. It also has been reported that HIV PIs act as both inhibitors [22] and occasionally inducers of P-gp [23,24,25]. Therefore, HIV PIs may alter the pharmacokinetics of P-gp substrates drugs on multiple levels [26,27].

Macrophages play a pivotal role in the initiation and progression of atherosclerotic lesions. Our previous study demonstrated that HIV PIs accumulate in macrophages and promote foam cell formation, which is the core component of the atherosclerotic plaque. Macrophages represent an important *in vitro* model to screen potential complementary and alternative medicines (CAMs) which may counteract HIV PI-induced cardiovascular complications. Factors that affect accumulation of these drugs into macrophages are therefore important to consider. Concurrently, the expression of drug transporters deserves attention. Recent studies have shown that P-gp is expressed in both human and mouse macrophages [28,29] and it is likely to influence accumulation of BBR and HIV PIs in macrophages. However, the role of P-gp in the interaction between BBR and HIV PIs has not been elucidated. In mouse J774A.1 macrophages, we already observed a significant enhancement of BBR intracellular accumulation induced by lopinavir (LOPV) [30]. Therefore, our goal was to further explore the potential role of P-gp in HIV PIs-induced increase of BBR accumulation in macrophages. Functional expression of P-gp and a possible inhibitory mechanism was also probed. The results presented herein indicate that P-gp is involved in BBR efflux in macrophages. In addition, HIV PIs increase BBR uptake by inhibiting the activity of P-gp in macrophages. This study provided new important information for future application of BBR in treatment of HIV PI-associated complications in the clinic.

Materials and Methods

Materials

Amprenavir (AMPV), ritonavir (RITV), and LOPV were obtained from NIH AIDS Research & Reference Reagent Program. BBR, verapamil, haloperidol, MK571, bromosulfalein, rhodamine 123 (Rh123), digoxin, and general reagents for High Performance Liquid Chromatography (HPLC) were purchased from Sigma (St. Louis, MO, USA). Cell culture medium and supplement components were from Invitrogen (Carlsbad, CA, USA).

Cell Culture and Treatment

RAW 264.7 mouse macrophages (ATCC, Rockville MD, USA) was cultured in DMEM medium containing 10% heat-inactivated fetal bovine serum (FBS), 100 U/mL penicillin and 100 μ g/mL streptomycin at 37°C with 5% CO₂. THP-1 human monocytes

(ATCC, Rockville MD, USA) were maintained in RPMI Medium 1640 supplemented with 10% FBS, 100 U/ml penicillin, and 100 μ g/ml streptomycin at 37°C with 5% CO₂. THP-1 monocytes were treated with PMA (100 ng/ml) for 5 days to facilitate differentiation into macrophages. Wild-type and human P-gp-transfected MDCK cells were kindly provided by Dr. Hongjian Zhang, PharmaResources Co., Ltd., Shanghai, China. MDCK cells were cultured in DMEM supplemented with 10% FBS, penicillin (100 U/mL) and streptomycin (100 μ g/mL). HIV PIs, BBR, P-gp selective inhibitors and substrates were dissolved in dimethyl sulfoxide (DMSO) and directly added into the culture medium and incubated for different time periods.

Measurement of P-gp activities in macrophages

To evaluate the effect of HIV PIs on P-gp activities in macrophages, RAW264.7 cells were treated with HIV PIs (5, 15, and 25 μ M) and Rh123 (5 μ M) or digoxin (1 μ M) for 4 h. After washing with ice-cold PBS for three times, cells were harvested in 500 μ L of 1% (v/v) Triton X-100 in PBS. A 5 μ L aliquot was used for measurement of protein concentration and the remaining cell lysate was centrifuged at 14,000 rpm for 5 min at 4°C. The amounts of Rh123 was determined using 96-well fluorescence plate reader with excitation/emission wavelengths at 485/530 nm. Digoxin was determined by Liquid chromatography–mass spectrometry (LC/MS). The total amounts of intracellular Rh123 and digoxin were normalized to total protein concentration.

Quantification of BBR using High Performance Liquid Chromatography (HPLC) Assay

An Agilent 1200 Series HPLC system and a Beckman C18 reverse phase column (5 μ m, 4.6 mm \times 25 cm) were used to quantify the BBR in cells. A mobile phase consisting of acetonitrile/water (30/70, v/v) containing 0.08% formic acid and 0.15% ammonium acetate was pumped through the column at a speed of 1.0 mL/min. BBR was detected by UV absorbance at a wavelength of 346 nm. Under these conditions, the retention time of BBR was 7.9 min. The quantitative linear range was 12.5–1600.0 ng/mL for BBR. Standard curves of BBR were constructed using weighted linear regression of peak area ratio values of the calibration standards. The correlation coefficient (R^2) was 0.999.

Quantification of HIV PIs using HPLC Assay

An Agilent 1200 series HPLC system was used to quantify HIV PIs (AMPV, RITV, and LOPV) concentrations in RAW264.7 macrophages according to the method as previously described with some modifications [31]. Briefly, the process was carried out on a Beckman C18 reverse phase column (5 μ m, 4.6 mm \times 25 cm). The mobile phase, at the flow rate of 1.0 mL/min, consisted of acetonitrile/water (52/48, v/v) containing 0.05 M KH₂PO₄ pH 3.0. The samples were extracted with acetonitrile with a ratio of 40:60 (v/v) followed by centrifugation. The HIV PIs were detected at a wavelength of 210 nm. Quantification was performed by determining the HPLC peak areas monitored at 210 nm versus the nominal concentration of the analyte. The retention time of AMPV, RITV, and LOPV were 7.1, 14.6 and 17.0 min, respectively. The quantitative linear range was 25.0–5000 ng/mL for AMPV, 100–5000 ng/mL for RITV and LOPV. The correlation coefficient (R^2) of AMPV, RITV, and LOPV were 0.997, 0.999 and 0.999, respectively.

Quantification of digoxin using LC/MS Assay

A Shimadzu 2010A liquid chromatograph-mass spectrometer (Shimadzu, Kyoto, Japan) with an ESI source was utilized to quantify intracellular digoxin. Separation was performed using a Inertsil ODS-3 column (150 mm × 2.1 mm i.d., 5 μm, GL Science Inc., Japan) fitted with a C18 guard column (4.6 × 12.5 mm, 5 μm, Agilent, USA) at 40°C. The mobile phase consisting of solvent A (0.02% ammonium chloride in water) and solvent B (acetonitrile) using the following gradient: 40–60% B (linear, 0.03 min), 60–80% B (linear, 4.97 min), 80–99% B (linear, 0.03 min), 99% B (1.97 min), 99–40% B (linear, 2.5 min) and 40% B (5.3 min) for equilibration at a speed of 0.2 mL/min. In SIM mode negative ions of digoxin and digitoxin (internal standard) were monitored at *m/z* 815.20 and 799.30, respectively. Under these conditions, the retention times of digoxin and digitoxin were 6.3 and 4.8 min, respectively. The quantitative linear range was 1.0–50.0 ng/mL for digoxin. The correlation coefficient (R^2) was 0.999. Digoxin in the cells was extracted using ethyl acetate as described previously [16] and subjected to LC/MS analysis as above.

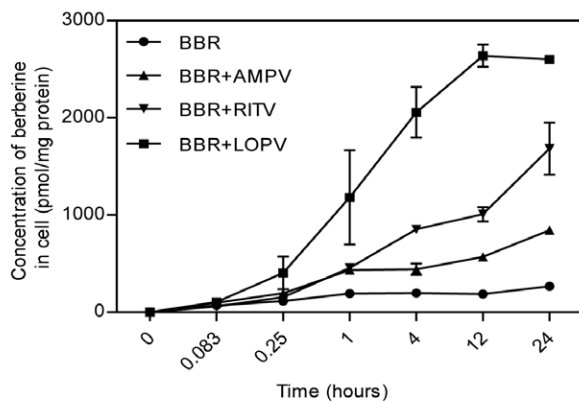
Molecular Docking

The structures of ligands including BBR, AMPV, RITV, and LOPV were constructed and optimized under OPLS 2001 force field within Maestro environment. The reported crystal structure of MDR1A/P-gp (PDB code: 3G60) was chosen for the docking template [16]. The protein and ligands were prepared with the Protein Preparation Wizard in Maestro using default options: bond orders were assigned, hydrogens were added, and water molecules were deleted. P-gp was minimized with the OPLS 2001 force field. The ligands were then docked into P-gp flexibly using Glide SP method with default settings.

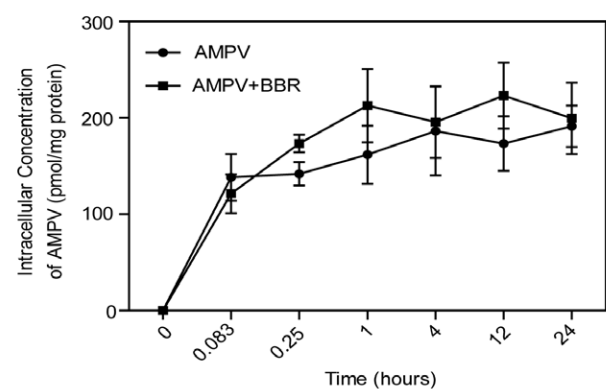
RNA isolation and RT-PCR

Total cellular RNA was isolated after treatment using the Promega SV Total RNA Isolation System. The first cDNA was synthesized using the High-Capacity cDNA Archive Kit. RT-PCR was performed as described previously [2]. Primer pairs used were 5'-AGGGCATTACTTCAAACCTTGTC-3' and 5'-CCTGTCTTGGTCATGTGGTC-3' for *Abcb1a* (NM_011076), 5'-GTGCTTACTGTCTTCTTC-3' and 5'-CAATGCTTGGC-TCG TTATC-3' for *Abcb1b* (NM_011075), or 5'-GTCG-

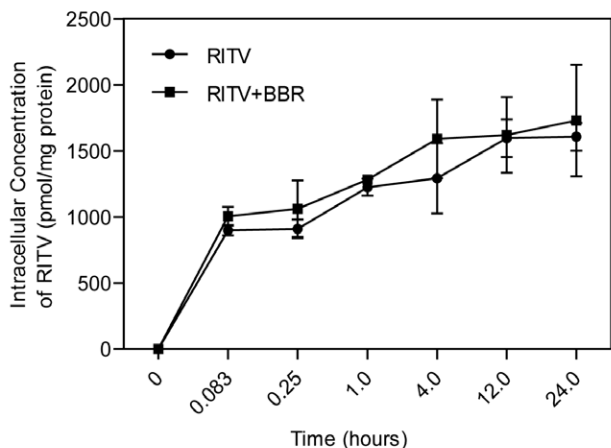
A.



B.



C.



D.

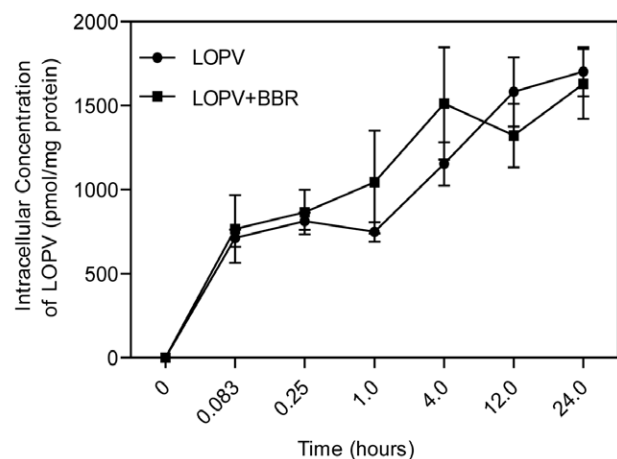


Figure 1. Effect of HIV PIs on BBR uptake in RAW264.7 mouse macrophages. Cells were treated with BBR (5 μM) with or without individual HIV PIs (AMPV, RITV, or LOPV, 15 μM) for 5 min, 15 min, 1 h, 4 h, 12 h or 24 h. The intracellular concentrations of BBR and HIV PIs were determined by HPLC analysis as described in "Methods" and normalized with total protein amount of viable cells. Data are means ± S.D. of three sets of samples. A) Time course of BBR uptake without or with individual HIV PIs; B) Time course of AMPV uptake without or with BBR; C) Time course of RITV uptake without or with BBR; D) Time course of LOPV without or with BBR. doi:10.1371/journal.pone.0054349.g001

TGGATCTGA CGTGC-3' and 5'- GATG CCTGCTTCAC-CAC CTT-3' for *GAPDH* (BC145810) as an internal control. The PCR products were confirmed by DNA gel electrophoresis and DNA sequencing.

Western Blot Analysis

The membrane proteins and cytosol proteins were prepared and used for western blot analysis as described previously [32]. The protein concentration was determined using Bio-Rad protein assay reagent. The membrane protein (75 μ g) or cytosol protein (25 μ g) was resolved on 8% SDS-polyacrylamide gels and transferred to nitrocellulose membranes (BioRad, Hercules, CA, USA). Membranes were blocked with 5% non-fat dry milk in Tris-buffered saline (TBS) for 1 h at room temperature and incubated with the polyclonal antibody to P-gp (C219) (1:300 dilution, Abcam, Cambridge, MA, USA), or β -actin (1:500 dilution; Boster Biological Technology, Wuhan, China) at 4°C for overnight.

Immunoreactive bands were detected using horse radish peroxidase-conjugated secondary antibody and ChemiDoc XRS⁺ digital imaging system (BioRad, Hercules, CA, USA).

Statistical analysis

All of experiments were repeated at least three times and the results were expressed as mean \pm S.D. One-way ANOVA was employed to analyze the differences between sets of data using GraphPad Prism (GraphPad, San Diego, CA). A value of $p < 0.05$ was considered statistically significant.

Results

Effect of HIV PIs on the intracellular accumulation of BBR in macrophages

Intracellular BBR uptake studies were performed to evaluate whether HIV PIs (AMPV, RITV and LOPV) affect BBR

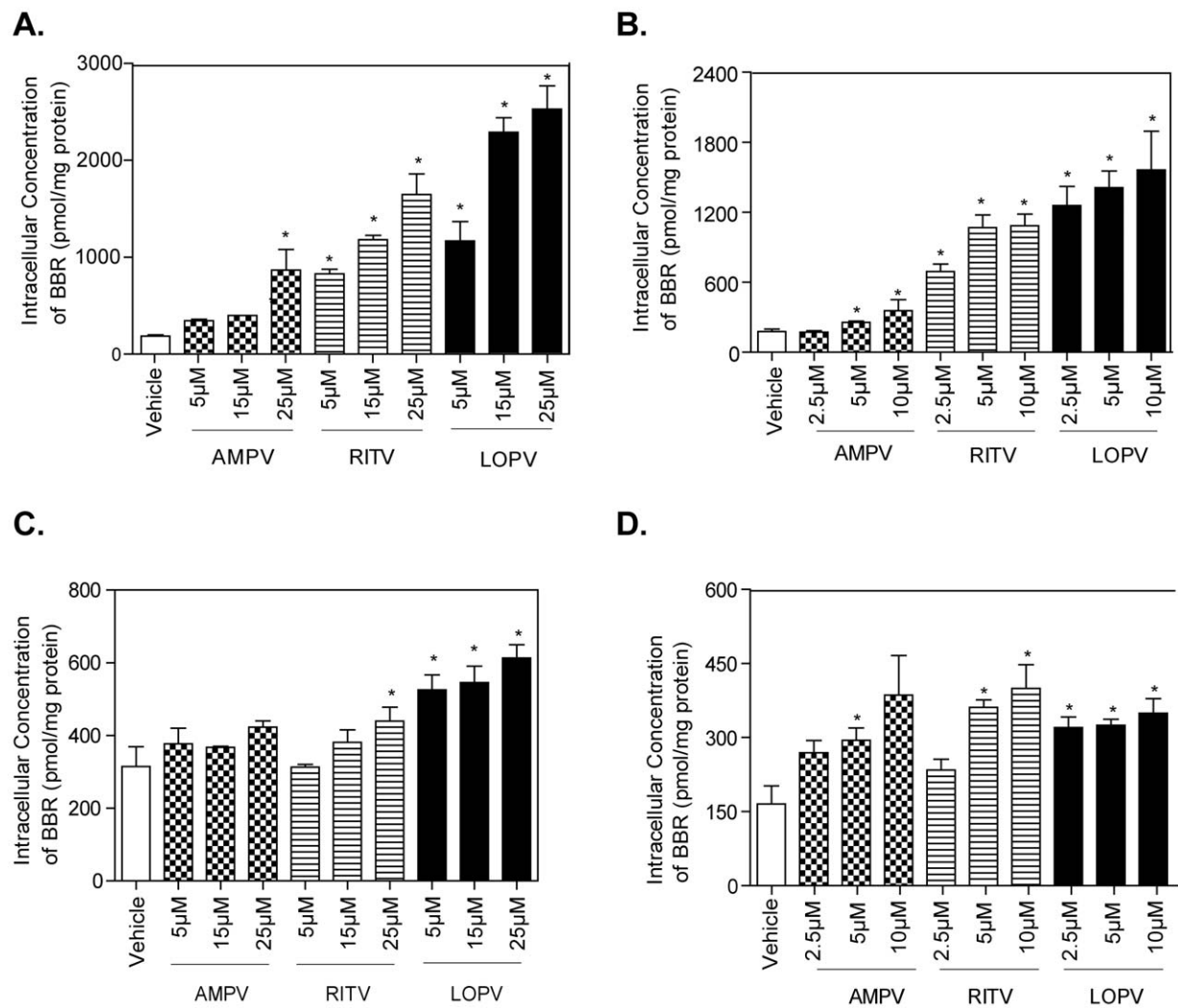


Figure 2. Effect of HIV PIs on BBR uptake in macrophages. A. Intracellular BBR accumulation after exposure to AMPV, RITV, LOPV (5, 15 and 25 μ M) for 4 h in RAW 264.7 macrophages. B. Intracellular BBR accumulation after exposure to AMPV, RITV, LOPV (2.5, 5 and 10 μ M) for 72 h in RAW 264.7 macrophages. Cells were pretreated with different concentrations of individual HIV PIs for 72 h, then treated with BBR for 4 h. C. Intracellular BBR accumulation after exposure to AMPV, RITV, LOPV (5, 15 and 25 μ M) for 4 h in THP-1 macrophages. D. Intracellular BBR accumulation after exposure to AMPV, RITV, LOPV (2.5, 5 and 10 μ M) for 72 h in THP-1 macrophages. Cells were pretreated with different concentrations of individual HIV PIs for 72 h, then treated with BBR for 4 h. The intracellular cellular BBR amount was determined by HPLC analysis as described in "Methods" and normalized with total protein amount of viable cells. Data are means \pm S.D. of three sets of samples. * $p < 0.05$, statistical significance of HIV PI-treated group relative to vehicle control group.

doi:10.1371/journal.pone.0054349.g002

accumulation in RAW264.7 macrophages. As shown in Fig. 1A, in the absence of HIV PIs, the intracellular concentration of BBR was relatively low. However, in the presence of HIV PIs, the intracellular concentration of BBR was significantly increased. At the 24 h time point, the intracellular BBR concentrations were increased 3-fold, 6-fold and 10-fold, by AMPV, RITV and LOPV, respectively. However, the intracellular concentrations of individual HIV PIs were not affected by BBR in macrophages (Fig. 1B–D).

We further examined whether HIV PI-induced increase of BBR accumulation in RAW macrophages was dose-dependent. Cells were treated with BBR in the presence of different concentrations of individual HIV PIs (0, 5, 15, and 25 μM) for 4 h. As shown in Fig. 2A, AMPV, RITV and LOPV, increased BBR accumulation by 5-fold, 9-fold and 14-fold compared to vehicle control at 25 μM , respectively. In parallel with these studies, extended exposure (3 days) of RAW macrophages to HIV PIs (0, 2.5, 5, and 10 μM) also increased intracellular BBR accumulation by 2-fold, 6-fold and 9-fold compared to vehicle control at 10 μM AMPV, RITV or LOPV, respectively (Fig. 2B). Similarly, intracellular BBR concentration in human THP-1 macrophages was significantly increased after acute and extended exposure to HIV PIs (Fig. 2C, D).

Identification of P-gp as a major player in HIV PI-mediated intracellular accumulation of BBR

To identify the potential drug transporters involved in efflux of BBR in macrophages, the selective chemical inhibitors for P-gp (verapamil and haloperidol) and multidrug resistance-associated protein (MRP) (MK571 and bromosulfalein) were used. As shown in Fig. 3, both verapamil and haloperidol significantly increased uptake of BBR in RAW264.7 macrophages. However, MK571 and bromosulfalein had no effect. The expression of P-gp in RAW264.7 macrophages was confirmed by RT-PCR using specific primers for mouse *Mdr1a* (*Abcb1a*) and *Mdr1b* (*Abcb1b*). Both *Mdr1a* and *Mdr1b* were expressed in RAW264.7 macrophages, but the expression level of *Abcb1b* was much higher than

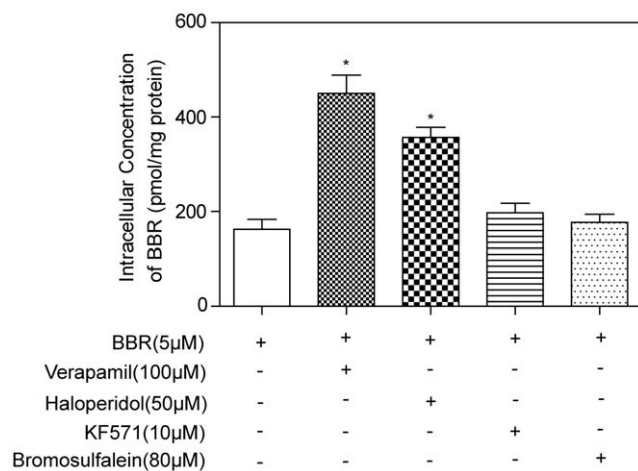


Figure 3. Effect of P-gp and MRP inhibitors on BBR uptake in RAW264.7 macrophages. RAW264.7 macrophages were treated with BBR (5 μM) in the absence or presence of P-gp inhibitors, verapamil (100 μM) and haloperidol (50 μM), or MRP inhibitors, MK571 (10 μM) and bromosulfalein (80 μM) for 4 h. The intracellular concentrations of BBR were determined as described in “Methods”. Data are means \pm S.D. of three sets of samples. * $p < 0.05$, statistical significance of transporter inhibitor-treated group relative to BBR group. doi:10.1371/journal.pone.0054349.g003

that of *Abcb1a* (Online Fig. S1). Taken together, these results indicate that P-gp is the major transporter involved in BBR efflux in macrophages.

We further examined the effect of HIV PIs on P-gp transporter expression and activity in macrophages. The P-gp protein expression levels were determined by Western blot analysis. The results indicated that HIV PIs and BBR had no effect on P-gp protein expression (Online Fig. S2). Mouse macrophages were treated with different concentrations of individual HIV PIs (0, 5, 15, and 25 μM) in the presence of Rh123 or digoxin for 4 h. The intracellular concentrations of Rh123 and digoxin were determined as described in the Methods section. As shown in Fig. 4A and B, HIV PIs dose-dependently increased the intracellular

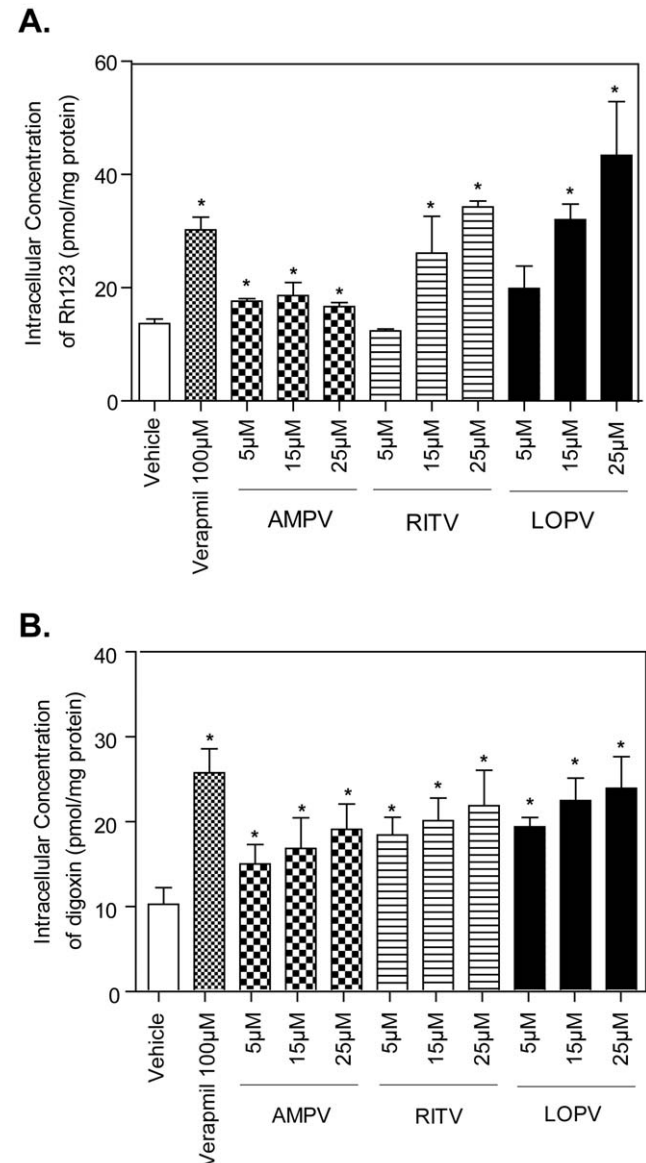


Figure 4. Effect of HIV PIs on P-gp transporter activity in RAW264.7 macrophages. A. Intracellular Rh123 accumulation after exposure to AMPV, RITV, LOPV (5, 15 and 25 μM), and verapamil (100 μM) for 4 h. B. Intracellular digoxin accumulation after exposure to AMPV, RITV, LOPV (5, 15 and 25 μM), and verapamil (100 μM) for 4 h. Data are means \pm S.D. of three sets of samples. * $p < 0.05$, statistical significance of HIV PI-treated group relative to vehicle control group. doi:10.1371/journal.pone.0054349.g004

Rh123 and digoxin amounts, indicating HIV PIs inhibited P-gp activity. These results indicated that HIV PIs inhibited P-gp activities to different extents, and the greatest inhibition was observed with LOPV treatment, followed by RITV and AMPV.

In order to further define the role of P-gp in HIV PI-induced intracellular accumulation of BBR, the wild type MDCK (MDCK/WT) and human P-gp-transfected MDCK (MDCK/P-gp) cell lines were used. The P-gp expression level in MDCK/WT is minimal compared to that in MDCK/P-gp cells. As expected, the intracellular concentration of BBR was significantly increased

both in wild type and P-gp-transfected MDCK cells in the presence of increasing concentrations of individual HIV PIs (Fig. 5A). However, the BBR concentrations in MDCK/P-gp cells treated with HIV PIs and verapamil were still lower than those in wild type MDCK cells, indicating the incomplete inhibition of over-expressed P-gp by HIV PIs and verapamil in MDCK/P-gp cells. As shown in Fig. 5B, the percentage of increase of intracellular BBR concentration induced by verapamil and HIV PIs (RITV and LOPV) in MDCK/P-gp cells was much higher than that in MDCK wild type cells. These results do suggest that

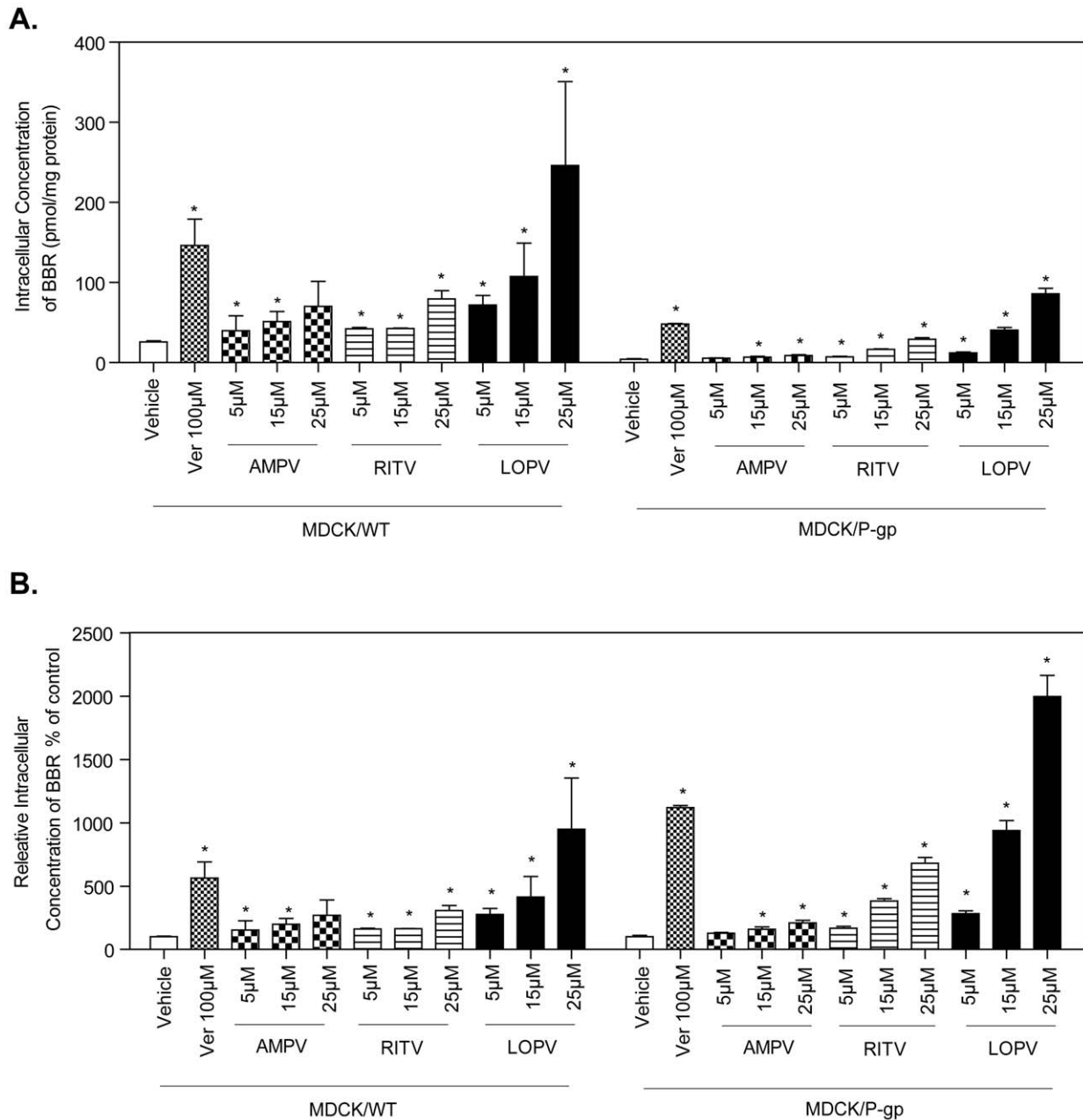


Figure 5. Influence of HIV PIs on BBR uptake in MDCK cells. Wild-type MDCK and P-gp-transfected MDCK cells were treated with BBR (5 µM) in the presence of different amount of individual HIV PIs (5, 15, and 25 µM) or verapamil (100 µM) for 4 h, respectively. The intracellular BBR amount was measured by HPLC analysis as described in "Methods" and normalized with total protein amount of viable cells. Data are means ± S.D. of three sets of samples. * $p < 0.05$ statistical significance of HIV PI-treated group relative to BBR group. **A.** Intracellular BBR concentration after exposure to AMPV, RITV, LOPV, and verapamil for 4 h in MDCK/WT and MDCK/P-gp cells. **B.** Relative changes of intracellular BBR concentration compared to basal levels after treatment with HIV PIs and verapamil for 4 h in MDCK/WT and MDCK/P-gp cells. doi:10.1371/journal.pone.0054349.g005

inhibition of P-gp activity may represent the major mechanism underlying HIV PI-induced increase of intracellular accumulation of BBR in macrophages.

Molecular Docking of BBR and HIV PIs to P-gp

Recently, the crystal structure of mouse MDR1a/P-gp (ABCB1) was identified, which has 87% sequence identity to human P-gp, in a drug-binding-competent state [16]. We therefore utilized the mouse P-gp structure as a receptor to perform molecular docking to test BBR and HIV PIs. The results suggest that BBR and HIV PIs were capable of binding to the drug binding pocket, but at different binding locations (Fig. 6). The binding site of BBR was located in the “lower” part of binding pocket (Fig. 6C); while the docked structure of LOPV occupied the whole “upper” part of the binding pocket (Fig. 6D). In addition, the binding sites of RITV and AMPV (Fig. 6E and F) were located at the “middle” part of the pocket. This suggests that the binding of HIV PIs in the drug binding pocket could competitively inhibit BBR from binding to the deeper site of this internal cavity. But binding of BBR has no effect on the binding of HIV PIs to their binding sites. In addition, LOPV, RITV and AMPV docked with higher glide energy to the binding pocket, compared to BBR. The ranking order of glide energy is: LOPV(−61.1 kcal/mol) >RITV(−56.6 kcal/mol)

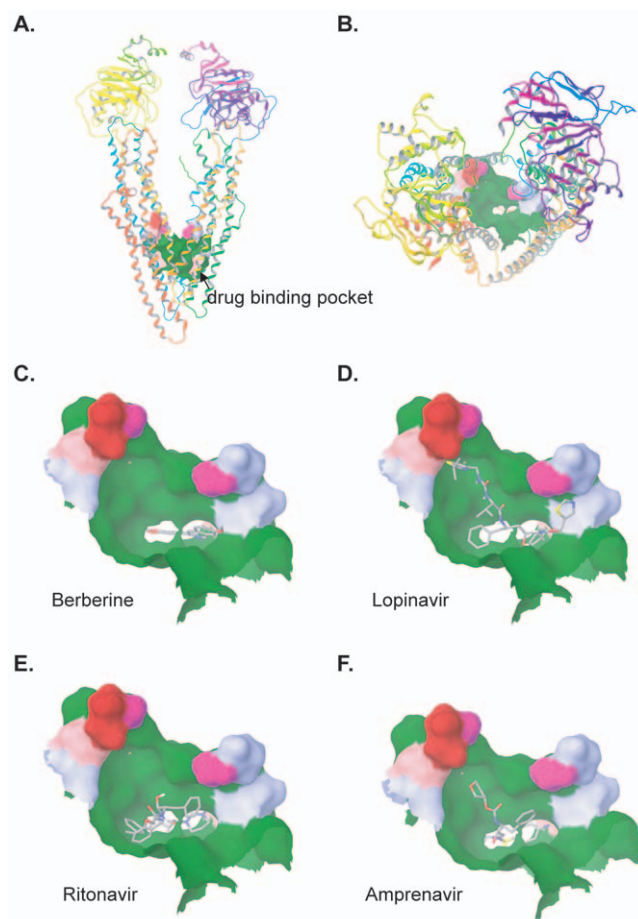


Figure 6. Molecular docking of BBR and HIV PIs to mouse P-gp. A and B: side and top view of the drug binding pocket of P-gp, respectively. Most of the surface of binding pocket colored green is hydrophobic and aromatic residues. C–F: The overall docking views of BBR, AMPV, RITV, and LOPV in the binding pocket. doi:10.1371/journal.pone.0054349.g006

>AMPV (−49.5 kcal/mol) >BBR (−33.6 kcal/mol). These data suggest that HIV PIs strongly bind to P-gp and prevent P-gp-mediated efflux of BBR in macrophages.

Discussion

HIV PIs are core components of HAART for HIV infection. CAMs have been extensively studied for use in HIV patients to manage HAART-associated side effects and improve overall physical health [33,34]. However, both HIV PIs and many CAMs are reported to interact with drug transporters and metabolizing enzymes [35,36]. As such, CAMs could potentially affect the beneficial outcome of HAART or the components of HAART could complicate the beneficial effects of CAMs. Limited studies have been published related to interactions between CAMs and anti-HIV drug regimens. Macrophages are the major target of HIV infection and also play critical roles in inflammation and cardiovascular diseases. We have previously shown that BBR prevents HIV PI-induced inflammatory response through modulating ER stress signaling pathways in macrophages and the intracellular concentration of BBR is significantly increased by HIV PIs (Fig. 1). However, the mechanism of HIV PI-induced BBR accumulation within macrophages is not previously known and was the focus of the current study.

Most of the recent studies regarding the role of BBR and HIV PIs in regulating drug transporters were done in intestinal epithelial cells, hepatocytes, or cancer cell lines [17,18,23,37,38,39]. Consistent with previous studies in other cell types, the accumulation of BBR was shown to be energy dependent in macrophages [18,39], suggesting ABC-transporters may be involved. It has been shown that P-gp mediates efflux of BBR in Caco-2 cells [17]. However, little is known regarding the expression and function of P-gp in macrophages. RT-PCR analysis indicated that P-gp is highly expressed in RAW264.7 macrophages (online Fig. S1). Previous studies in the literature is contradictory regarding the role of HIV PIs in the modulation of drug transporters [22,23,25,40,41]. Some of studies state that HIV PIs have a direct inhibitory effect on the activity of P-gp [22,40], whereas others report an increase in P-gp activity with treatment of HIV PIs [23,25,41]. Such discrepancies may be a result of varying concentrations and duration of treatment with different HIV PIs in different types of cells. In our studies, we did not observe significant changes of P-gp expression after HIV PIs and BBR treatment (online Fig. S2). By using selective substrates and inhibitors, we were able to determine the effect of HIV PIs on P-gp activities in macrophages. Transport of the prototypical P-gp substrates Rh123 and digoxin in cell culture has been successfully used to assess P-gp activity [42]. Rh123 and digoxin cell exclusion studies in RAW264.7 macrophages showed that intracellular concentrations of digoxin and Rh123 were significantly increased in macrophages after exposure to various HIV PIs. In RAW264.7 macrophages the ranking order of inhibition of P-gp activity was LOPV>RITV>AMPV. BBR accumulation was significantly increased in macrophages after acute and extended exposure to various HIV PIs. These findings suggest that the inhibitory effect of HIV PIs on P-gp activity was unidirectional, unlike atazanavir, which inhibits P-gp activity in short-term treatment and induces P-gp activity in long-term treatment [37]. Similar to the findings in mouse macrophages, HIV PIs also increased intracellular concentration of BBR in human THP-1 macrophages wild type MDCK cells and P-gp-transfected MDCK cells, with a rank order of patency LOPV>RITV>AMPV. Moreover, a lower multiple of the increase in BBR concentration after individual HIV PIs or Verapamil treatment in MDCK cells was observed in wild type

MDCK cells (Fig. 5B), which may due to the lower levels of endogenous P-gp expression. The P-gp expression level in wild type MDCK cells is about 4% of that in P-gp-transfected MDCK cells [43].

The molecular docking studies further suggest that the inhibitory effect of individual HIV PIs on the P-gp transporter is as follows: LOPV>RITV>AMPV. These results also suggest that HIV PIs could competitively block the binding of BBR to its binding site in P-gp, while BBR has no reverse effect on the binding of HIV PIVs to their binding sites in P-gp. Taken together, our studies suggest that HIV PIs increase BBR concentrations mainly by inhibiting the activities of P-gp. It should be noted that it has recently been reported that HIV PIs are also inhibitors of breast cancer resistance protein (BCRP) and multidrug resistance-associated protein1 (MRP1) [44,45,46]. However, the expression of BCRP in murine macrophages has not been clearly identified and the role of MRPs and BCRP in the accumulation of BBR increased by HIV PIs remains to be established in our future study.

It has been long realized that the bioavailability of BBR is very low *in vivo* [47]. Several possible mechanisms have been identified for its poor bioavailability [17,48]. P-gp-mediated efflux represents a major mechanism. Although inhibition of efflux of BBR by coadministration of HIV PIs may intuitively cause concern for use in clinic, this specific drug interaction may actually be beneficial to improve the biological activities of BBR. We will examine the effect of HIV PIs on bioavailability of BBR using an *in vivo* mouse model and further define the interaction between BBR and HIV PIs with other transporters in our future study.

In summary, drug interactions of BBR with HIV PIs mediated by P-gp inhibition were suggested by *in vitro* studies using

macrophages. Although further *in vivo* investigations of possible interactions are necessary, the current study provided valuable information for understanding the underlying cellular mechanism of BBR-HIV PIs interactions, which is critical to effectively applying this combinational therapy in the clinic.

Supporting Information

Figure S1 Expression of P-gp in macrophages. Total cellular RNA was isolated from RAW264.7 macrophages and reverse transcribed into 1st cDNA. Specific primers for MDR1a/P-gp (ABCB1a) and MDR1b/P-gp (ABCB1b) were used to run PCR. The PCR products were analyzed by DNA electrophoresis and confirmed by DNA sequencing. Representative image is shown.

(PDF)

Figure S2 Effect of HIV PIs and BBR on P-gp expression in RAW264.7 macrophages. Representative immunoblots against P-gp and β -actin from the membrane and cytosol extracts of RAW macrophages treated with individual HIV PIs (15 μ M) and BBR (5 μ M) for 6 h are shown. Blot shows specific bands of P-gp at \sim 170 kDa and β -actin was used as loading control.

(PDF)

Author Contributions

Conceived and designed the experiments: WZ GW PG HZ. Performed the experiments: WZ WX XL YW JS QZ. Analyzed the data: WZ. Wrote the paper: WZ BZ ES PH WP HZ.

References

- Pao V, Lee GA, Grunfeld C (2008) HIV therapy, metabolic syndrome, and cardiovascular risk. *Curr Atheroscler Rep* 10: 61–70.
- Zhou H, Pandak WM Jr, Lyall V, Natarajan R, Hylemon PB (2005) HIV protease inhibitors activate the unfolded protein response in macrophages: implication for atherosclerosis and cardiovascular disease. *Mol Pharmacol* 68: 690–700.
- Zhou H, Jarujaron S, Gurley EC, Chen L, Ding H, et al. (2007) HIV protease inhibitors increase TNF- α and IL-6 expression in macrophages: involvement of the RNA-binding protein HuR. *Atherosclerosis* 195: e134–143.
- Parker RA, Flint OP, Mulvey R, Elosua C, Wang F, et al. (2005) Endoplasmic reticulum stress links dyslipidemia to inhibition of proteasome activity and glucose transport by HIV protease inhibitors. *Mol Pharmacol* 67: 1909–1919.
- Chen L, Jarujaron S, Wu X, Sun L, Zha W, et al. (2009) HIV protease inhibitor lopinavir-induced TNF- α and IL-6 expression is coupled to the unfolded protein response and ERK signaling pathways in macrophages. *Biochem Pharmacol* 78: 70–77.
- Zhou H, Gurley EC, Jarujaron S, Ding H, Fang Y, et al. (2006) HIV protease inhibitors activate the unfolded protein response and disrupt lipid metabolism in primary hepatocytes. *Am J Physiol Gastrointest Liver Physiol* 291: G1071–1080.
- Huang J, Zhou H, Mahavadi S, Sriwai W, Lyall V, et al. (2005) Signaling pathways mediating gastrointestinal smooth muscle contraction and MLC20 phosphorylation by motilin receptors. *Am J Physiol Gastrointest Liver Physiol* 288: G23–31.
- Zhu XZ, Li XY, Liu J (2004) Recent pharmacological studies on natural products in China. *Eur J Pharmacol* 500: 221–230.
- Kuo CL, Chi CW, Liu TY (2004) The anti-inflammatory potential of berberine *in vitro* and *in vivo*. *Cancer Lett* 203: 127–137.
- Wang Y, Xiao J, Zhou H, Yang S, Wu X, et al. (2011) A Novel Monocarbonyl Analogue of Curcumin, (1E,4E)-1,5-Bis(2,3-dimethoxyphenyl)penta-1,4-dien-3-one, Induced Cancer Cell H460 Apoptosis via Activation of Endoplasmic Reticulum Stress Signaling Pathway. *J Med Chem* 54: 3768–3778.
- Hu Y, Ehli EA, Kittelsrud J, Ronan PJ, Munger K, et al. (2012) Lipid-lowering effect of berberine in human subjects and rats. *Phytomedicine* 19: 861–867.
- Kim WS, Lee YS, Cha SH, Jeong HW, Choe SS, et al. (2009) Berberine improves lipid dysregulation in obesity by controlling central and peripheral AMPK activity. *Am J Physiol Endocrinol Metab* 296: E812–819.
- Jeong HW, Hsu KC, Lee JW, Ham M, Huh JY, et al. (2009) Berberine suppresses proinflammatory responses through AMPK activation in macrophages. *Am J Physiol Endocrinol Metab* 296: E955–964.
- Amasheh M, Fromm A, Krug SM, Amasheh S, Andres S, et al. (2010) TNF α -induced and berberine-antagonized tight junction barrier impairment via tyrosine kinase, Akt and NF κ B signaling. *J Cell Sci* 123: 4145–4155.
- Wang Q, Zhang M, Liang B, Shirwany N, Zhu Y, et al. (2011) Activation of AMP-activated protein kinase is required for berberine-induced reduction of atherosclerosis in mice: the role of uncoupling protein 2. *PLoS One* 6: e25436.
- Aller SG, Yu J, Ward A, Weng Y, Chittaboina S, et al. (2009) Structure of P-glycoprotein reveals a molecular basis for poly-specific drug binding. *Science* 323: 1718–1722.
- Pan GY, Wang GJ, Liu XD, Fawcett JP, Xie YY (2002) The involvement of P-glycoprotein in berberine absorption. *Pharmacol Toxicol* 91: 193–197.
- Maeng HJ, Yoo HJ, Kim IW, Song IS, Chung SJ, et al. (2002) P-glycoprotein-mediated transport of berberine across Caco-2 cell monolayers. *J Pharm Sci* 91: 2614–2621.
- Kim RB, Fromm MF, Wandel C, Leake B, Wood AJ, et al. (1998) The drug transporter P-glycoprotein limits oral absorption and brain entry of HIV-1 protease inhibitors. *J Clin Invest* 101: 289–294.
- Polli JW, Jarrett JL, Studenberg SD, Humphreys JE, Dennis SW, et al. (1999) Role of P-glycoprotein on the CNS disposition of amprenavir (141W94), an HIV protease inhibitor. *Pharm Res* 16: 1206–1212.
- Fujimoto H, Higuchi M, Watanabe H, Koh Y, Ghosh AK, et al. (2009) P-glycoprotein mediates efflux transport of darunavir in human intestinal Caco-2 and ABCB1 gene-transfected renal LLC-PK1 cell lines. *Biol Pharm Bull* 32: 1588–1593.
- Storch CH, Theile D, Lindenmaier H, Haefeli WE, Weiss J (2007) Comparison of the inhibitory activity of anti-HIV drugs on P-glycoprotein. *Biochem Pharmacol* 73: 1573–1581.
- Perloff MD, von Moltke LL, Fahey JM, Daily JP, Greenblatt DJ (2000) Induction of P-glycoprotein expression by HIV protease inhibitors in cell culture. *Aids* 14: 1287–1289.
- Zastre JA, Chan GN, Ronaldson PT, Ramaswamy M, Couraud PO, et al. (2009) Up-regulation of P-glycoprotein by HIV protease inhibitors in a human brain microvessel endothelial cell line. *J Neurosci Res* 87: 1023–1036.
- Perloff MD, von Moltke LL, Fahey JM, Greenblatt DJ (2007) Induction of P-glycoprotein expression and activity by ritonavir in bovine brain microvessel endothelial cells. *J Pharm Pharmacol* 59: 947–953.
- Penzak SR, Shen JM, Alfaro RM, Remaley AT, Natarajan V, et al. (2004) Ritonavir decreases the nonrenal clearance of digoxin in healthy volunteers with known MDR1 genotypes. *Ther Drug Monit* 26: 322–330.

27. van Heeswijk RP, Bourbeau M, Campbell P, Seguin I, Chauhan BM, et al. (2006) Time-dependent interaction between lopinavir/ritonavir and fexofenadine. *J Clin Pharmacol* 46: 758–767.
28. Moreau A, Le Vec M, Jouan E, Parmentier Y, Fardel O (2011) Drug transporter expression in human macrophages. *Fundam Clin Pharmacol*.
29. Roy KR, Arunasree KM, Dhoot A, Aparna R, Reddy GV, et al. (2007) C-Phycocyanin inhibits 2-acetylaminofluorene-induced expression of MDR1 in mouse macrophage cells: ROS mediated pathway determined via combination of experimental and In silico analysis. *Arch Biochem Biophys* 459: 169–177.
30. Zha W, Liang G, Xiao J, Studer EJ, Hylemon PB, et al. (2010) Berberine inhibits HIV protease inhibitor-induced inflammatory response by modulating ER stress signaling pathways in murine macrophages. *PLoS One* 5: e9069.
31. Lei B, Zha W, Wang Y, Wen C, Studer EJ, et al. (2010) Development of a novel self-microemulsifying drug delivery system for reducing HIV protease inhibitor-induced intestinal epithelial barrier dysfunction. *Mol Pharm* 7: 844–853.
32. Zhang J, Zhou F, Wu X, Gu Y, Ai H, et al. (2010) 20(S)-ginsenoside Rh2 noncompetitively inhibits P-glycoprotein in vitro and in vivo: a case for herb-drug interactions. *Drug Metab Dispos* 38: 2179–2187.
33. Patel J, Buddha B, Dey S, Pal D, Mitra AK (2004) In vitro interaction of the HIV protease inhibitor ritonavir with herbal constituents: changes in P-gp and CYP3A4 activity. *Am J Ther* 11: 262–277.
34. Duggan J, Peterson WS, Schutz M, Khuder S, Charkraborty J (2001) Use of complementary and alternative therapies in HIV-infected patients. *AIDS Patient Care STDS* 15: 159–167.
35. He SM, Li CG, Liu JP, Chan E, Duan W, et al. (2010) Disposition pathways and pharmacokinetics of herbal medicines in humans. *Curr Med Chem* 17: 4072–4113.
36. Zha W, Zha BS, Zhou F, Zhou H, Wang G (2012) The Cellular Pharmacokinetics of HIV Protease Inhibitors: Current Knowledge and Future Perspectives. *Curr Drug Metab*.
37. Perloff ES, Duan SX, Skolnik PR, Greenblatt DJ, von Moltke LL (2005) Atazanavir: effects on P-glycoprotein transport and CYP3A metabolism in vitro. *Drug Metab Dispos* 33: 764–770.
38. Profit L, Eagling VA, Back DJ (1999) Modulation of P-glycoprotein function in human lymphocytes and Caco-2 cell monolayers by HIV-1 protease inhibitors. *Aids* 13: 1623–1627.
39. Shitan N, Tanaka M, Terai K, Ueda K, Yazaki K (2007) Human MDR1 and MRP1 recognize berberine as their transport substrate. *Biosci Biotechnol Biochem* 71: 242–245.
40. Richter M, Gyemant N, Molnar J, Hilgeroth A (2004) Comparative effects on intestinal absorption in situ by P-glycoprotein-modifying HIV protease inhibitors. *Pharm Res* 21: 1862–1866.
41. Bousquet L, Roucairol C, Hembury A, Nevers MC, Creminon C, et al. (2008) Comparison of ABC transporter modulation by atazanavir in lymphocytes and human brain endothelial cells: ABC transporters are involved in the atazanavir-limited passage across an in vitro human model of the blood-brain barrier. *AIDS Res Hum Retroviruses* 24: 1147–1154.
42. Artursson P, Palm K, Luthman K (2001) Caco-2 monolayers in experimental and theoretical predictions of drug transport. *Adv Drug Deliv Rev* 46: 27–43.
43. Zhang Y, Benet LZ (1998) Characterization of P-glycoprotein mediated transport of K02, a novel vinylsulfone peptidomimetic cysteine protease inhibitor, across MDR1-MDCK and Caco-2 cell monolayers. *Pharm Res* 15: 1520–1524.
44. Weiss J, Rose J, Storch CH, Ketabi-Kiyavash N, Sauer A, et al. (2007) Modulation of human BCRP (ABCG2) activity by anti-HIV drugs. *J Antimicrob Chemother* 59: 238–245.
45. Gupta A, Zhang Y, Unadkat JD, Mao Q (2004) HIV protease inhibitors are inhibitors but not substrates of the human breast cancer resistance protein (BCRP/ABCG2). *J Pharmacol Exp Ther* 310: 334–341.
46. Bierman WF, Scheffer GL, Schoonderwoerd A, Jansen G, van Agtmael MA, et al. (2010) Protease inhibitors atazanavir, lopinavir and ritonavir are potent blockers, but poor substrates, of ABC transporters in a broad panel of ABC transporter-overexpressing cell lines. *J Antimicrob Chemother* 65: 1672–1680.
47. Shen ZF, Xie MZ (1993) [Determination of berberine in biological specimen by high performance TLC and fluoro-densitometric method]. *Yao Xue Xue Bao* 28: 532–536.
48. Liu YT, Hao HP, Xie HG, Lai L, Wang Q, et al. (2010) Extensive intestinal first-pass elimination and predominant hepatic distribution of berberine explain its low plasma levels in rats. *Drug Metab Dispos* 38: 1779–1784.