



Cornell University
ILR School

Cornell University ILR School
DigitalCommons@ILR

Federal Publications

Key Workplace Documents

10-2009

Income of the Aged Chartbook, 2006

Social Security Administration

Follow this and additional works at: https://digitalcommons.ilr.cornell.edu/key_workplace

Thank you for downloading an article from DigitalCommons@ILR.

Support this valuable resource today!

This Article is brought to you for free and open access by the Key Workplace Documents at DigitalCommons@ILR. It has been accepted for inclusion in Federal Publications by an authorized administrator of DigitalCommons@ILR. For more information, please contact catherwood-dig@cornell.edu.

If you have a disability and are having trouble accessing information on this website or need materials in an alternate format, contact web-accessibility@cornell.edu for assistance.

Income of the Aged Chartbook, 2006

Abstract

This biennial companion to *Income of the Population 55 or Older* highlights selected data in charts and tables that are easy to understand. The charts focus on the receipt and shares of income from Social Security, pensions, assets, earnings, and public assistance, effectively illustrating the Social Security program's pivotal role in the economic security of the aged.


Keywords

aging, employment, retirement, pension, benefits, trends, public policy, Social Security

Comments

Suggested Citation

Social Security Administration. (2009). *Income of the aged chartbook, 2006*. Washington, DC: Author.
http://digitalcommons.ilr.cornell.edu/key_workplace/659



Income of the Aged Chartbook, 2006

Social Security Administration
Office of Retirement and Disability Policy
Office of Research, Evaluation, and Statistics
500 E Street, SW, 8th Floor
Washington, DC 20254

SSA Publication No. 13-11727
Released: October 2009

Since 1941, the Social Security Administration (SSA) has periodically surveyed the aged to determine their economic status. The first national survey was conducted in 1963. In 1976, SSA's Office of Research and Statistics began compiling a biennial series of reports on the income of the aged based on data collected by the U.S. Census Bureau in its Current Population Survey. These SSA reports are published under the title *Income of the Population 55 or Older*. The most recent edition of that publication is based on 2006 data, which, along with special tabulations, form the basis of this chartbook.

This publication covers the population aged 65 or older. The unit of analysis here, with the exception of measures of poverty, is the aged unit, which is a married couple living together or a person who does not live with a spouse. The age of a married couple is the age of the husband if he is 65 or older; if the husband is younger than 55 and the wife is aged 65 or older, the age of the married couple is the age of the wife. The race and Hispanic origin of a married couple are determined by the husband. The unit of analysis for poverty is persons aged 65 or older.

The 2006 sample represented 11,298,000 couples and 16,122,000 single units. The single unit may be a widow(er), a divorced or separated person, a legally married person who does not live with a spouse, or a person who never married. This unit of analysis allows one to measure the economic status of the entire noninstitutionalized aged population separately from that of the family or household in which the unit may live.

Lynn Fisher and Nick Love prepared this chartbook. Staff of the Division of Information Resources edited the report and prepared it for publication. This chartbook and its companion publication, *Income of the Population 55 or Older*, are available on our Web site at <http://www.socialsecurity.gov/policy>.

Your suggestions and comments on this report are welcome. Any suggestions, comments, or questions related to the content of the charts should be directed to Lynn Fisher at 202-358-6308 or inc.aged@ssa.gov. For additional copies, e-mail op.publications@ssa.gov.

Manuel de la Puente
Associate Commissioner
for Research, Evaluation, and Statistics
October 2009

Income Sources

Asset income includes interest, dividends, income from estates or trusts, and net rental income or royalties.

Cash public assistance includes Supplemental Security Income and other cash public assistance payments low-income people receive, such as Aid to Families with Dependent Children (AFDC, ADC), temporary assistance to needy families (TANF), general assistance, and emergency assistance.

Earnings is the sum of income from wages and salaries and income from self-employment.

Noncash benefits include Food Stamps, energy assistance, and housing assistance. Noncash benefits are not included as money income for public assistance or total income.

Retirement benefits include Social Security, other public sources such as Railroad Retirement and government employee pensions (military, federal, state, and local), and private pensions and annuities.

Social Security includes retired-worker benefits, dependent or survivor benefits, disability benefits, transitionally insured benefits, and special age-72 benefits.

Pensions include regular payments from private pensions and annuities; government employee pensions; Railroad Retirement; and individual retirement accounts (IRAs), Keoghs, and 401(k) plans. Irregular withdrawals (lump-sum payments) from IRAs, Keoghs, and 401(k) plans are not included in the data because they do not fit the Census Bureau's definition of money income.

Income

Total money income is the sum of all income received by the aged unit before any deductions such as taxes, union dues, or Medicare premiums. Total money income does not reflect nonmoney transfers such as food stamps, health benefits, subsidized housing, payments in kind, or fringe benefits from one's employment. Total money income does not include capital gains or losses, or irregular withdrawals (lump-sum payments) from IRAs, Keoghs, or 401(k) plans.

Aggregate income is the sum of the total money income of all aged units in the population of interest. Several charts in this book present the shares of aggregate income attributable to specific sources, such as Social Security.

Source of Data

Data for this series are from the March Current Population Survey (CPS) of the U.S. Census Bureau. The CPS samples a large cross section of households in the United States each year (approximately 98,000 in March 2007). The March supplement gathers detailed information on income and labor force participation of each person 15 years of age or older in the sample households.

General Notes

This publication covers the population aged 65 or older. The unit of analysis here, with the exception of the measures of family income of persons and poverty, is the aged unit, which is a married couple living together or a person who does not live with a spouse. The age of a married couple is the age of the husband if he is 65 or older; if the husband is younger than 55 and the wife is aged 65 or older, the age of the married couple is the age of the wife. The race and Hispanic origin of a married couple are determined by the husband. The unit of analysis for family income of persons and poverty is persons aged 65 or older.

Beginning with data for 2002, respondents may identify themselves in more than one racial group. The "White alone" and "Black alone" categories reflect respondents who reported only one race.

All years are calendar years.

Nonmarried men and nonmarried women include persons who are separated or married but living apart from their spouse.

Persons of Hispanic origin may be of any race.

Total Money Income

Percentage distribution of aged units 65 or older	2
Percentage with various levels of income.	3
Median income, by age and marital status	4
Median income, by marital status, sex of nonmarried persons, race, and Hispanic origin	5
Change in median income, by marital status and race, selected years	6

Income Sources

Percentage receiving income from specified source	8
Percentage of aged beneficiary units receiving Social Security benefits, by relative importance of benefits to total income.	9
Percentage receiving income from earnings and pensions, by age	10
Percentage receiving income from major sources, by race and Hispanic origin	11
Change in percentage receiving income from major sources, selected years	12
Percentage with various levels of income, by receipt of asset income	13
Median income, by receipt of earnings and retirement benefits	14

Shares of Aggregate Income

Shares of aggregate income, by source.	16
Shares of aggregate income for the lowest and highest income quintiles, by source	17
Change in shares of aggregate income, by source, selected years	18

Family Income of Persons 65 or Older

Percentage distribution of persons 65 or older. 20

Percentage with various levels of family income 21

Median family income, by sex and age. 22

Median family income, by sex, race, and Hispanic origin. 23

Family income source, by sex 24

Percentage of aged persons in Social Security beneficiary families,
by relative importance of family benefits to family total income and sex 25

Poverty Status, Based on Family Income

Poverty status, by sex, marital status, race, and Hispanic origin 28

Poverty status, by age 29

Total Money Income

- ▶ The demographic composition of the elderly changes with age.
- ▶ The aged are an economically diverse group.
- ▶ Income differences by age are associated with differences in marital status.
- ▶ Demographic differences are associated with different levels of median income for units aged 65 or older.
- ▶ Median real income has risen substantially over the years.

The demographic composition of the elderly changes with age.

Aged units 65 to 69 are the most likely to be married couples (51.7%), while aged units 80 or older are most likely to be nonmarried women (57.8%). The younger age groups also have a greater proportion of minorities than the older cohorts.

Percentage distribution of aged units 65 or older, 2006

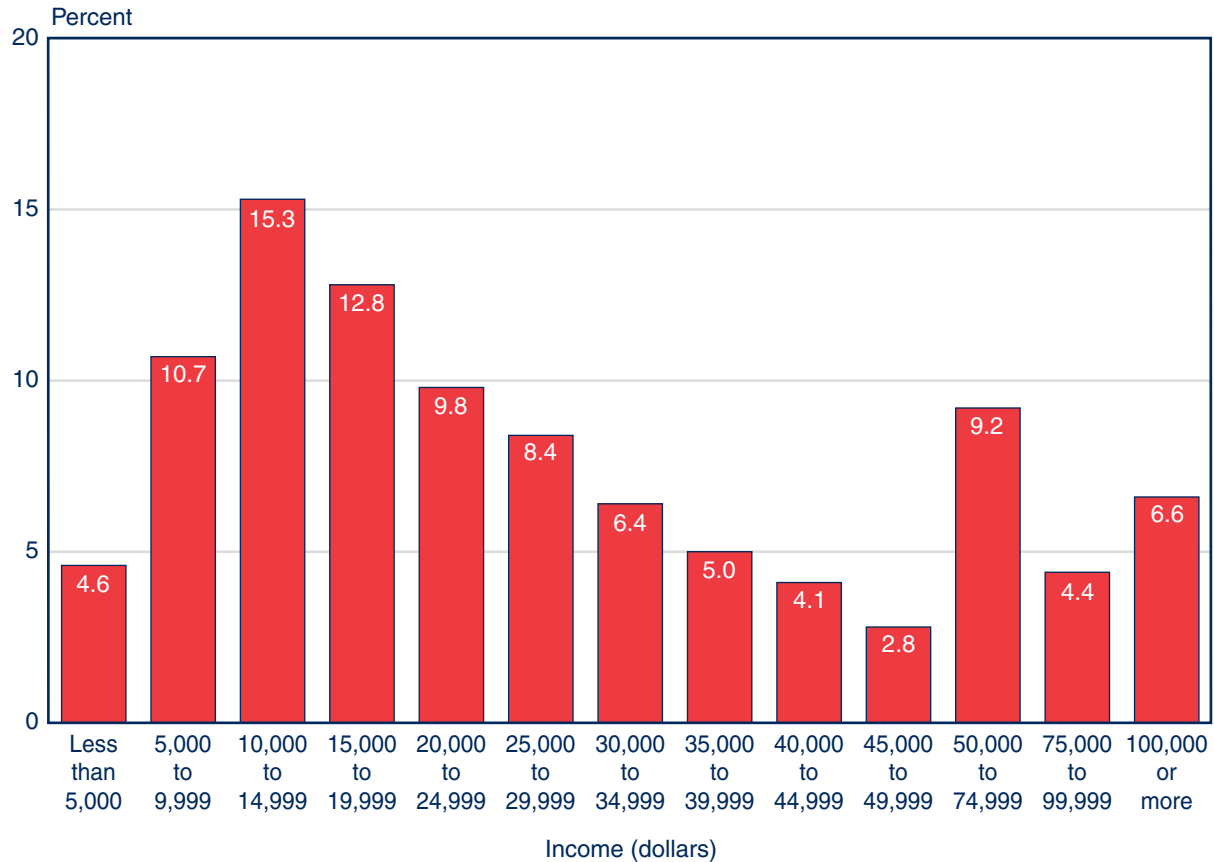
	65 or older	65–69	70–74	75–79	80 or older
Marital status and sex					
Married couples	41.2	51.7	46.5	42.3	27.0
Nonmarried men	15.4	15.7	16.1	14.5	15.2
Nonmarried women	43.4	32.6	37.5	43.3	57.8
Race					
White alone	85.8	83.9	83.7	86.7	88.6
Black alone	9.6	10.9	11.5	8.7	7.5
Asian alone	3.1	3.4	3.2	3.3	2.7
Hispanic origin	6.9	8.3	7.5	6.8	5.4
Total number of aged units (thousands)	27,421	7,493	5,979	5,778	8,171

NOTE: Totals do not necessarily equal the sum of the rounded components.

The aged are an economically diverse group.

The median income for units aged 65 or older is \$23,194, but there are wide differences within the total group. Approximately 15% have an income of under \$10,000, and roughly 20% have an income of \$50,000 or more.

Percentage with various levels of income, 2006

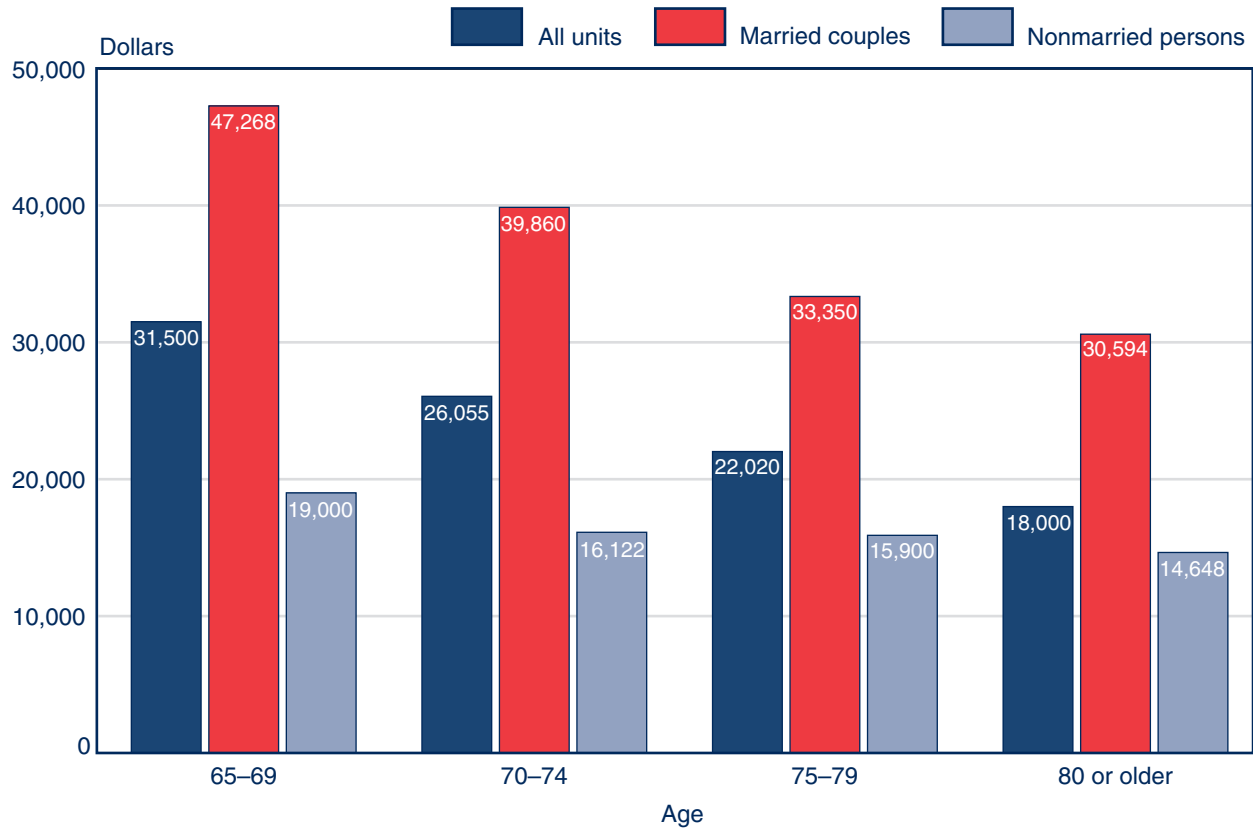


NOTE: Totals do not necessarily equal the sum of the rounded components.

Income differences by age are associated with differences in marital status.

Median income is generally lower in older age groups. The striking differences by age are due in part to the disproportionate number of nonmarried women in older age groups.

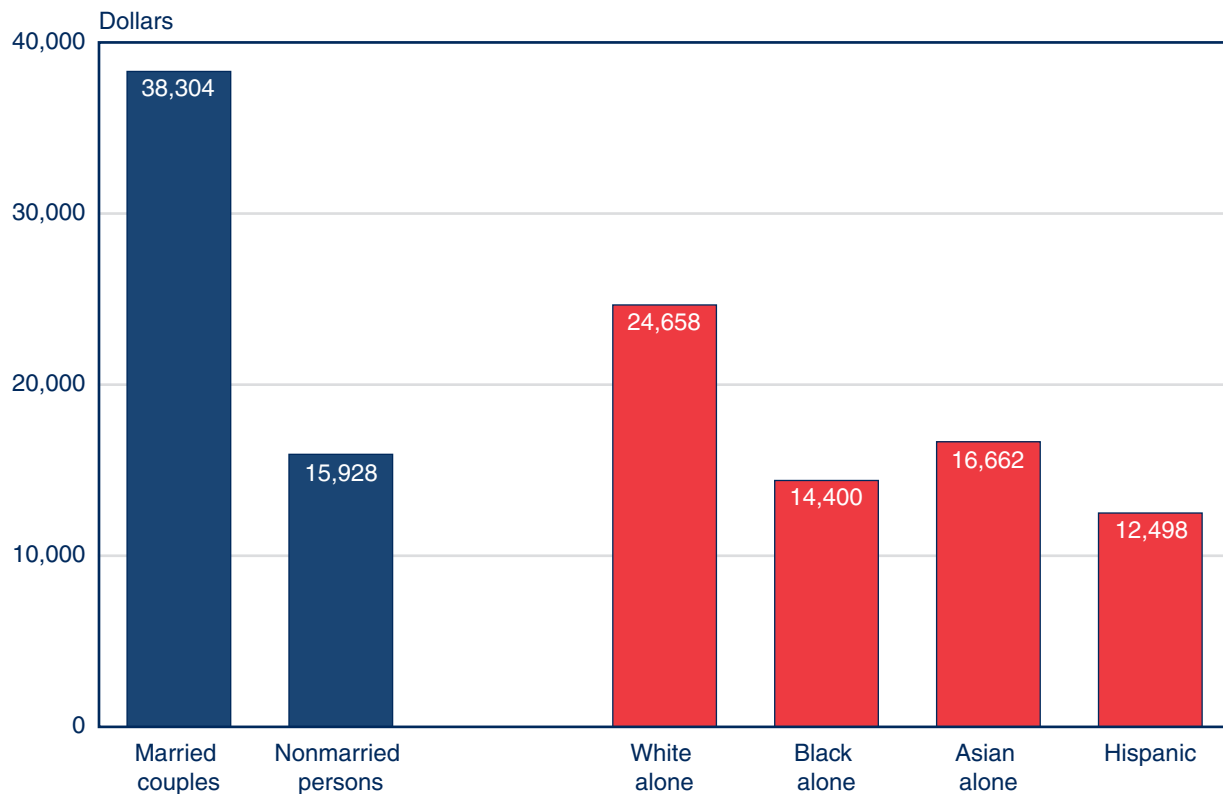
Median income, by age and marital status, 2006



Demographic differences are associated with different levels of median income for units aged 65 or older.

Income is highest for married couples, who have a median income nearly 2½ times that of nonmarried persons. Median income of white aged units is greater than that of Asian aged units by almost one-half and that of black aged units by almost three-fourths.

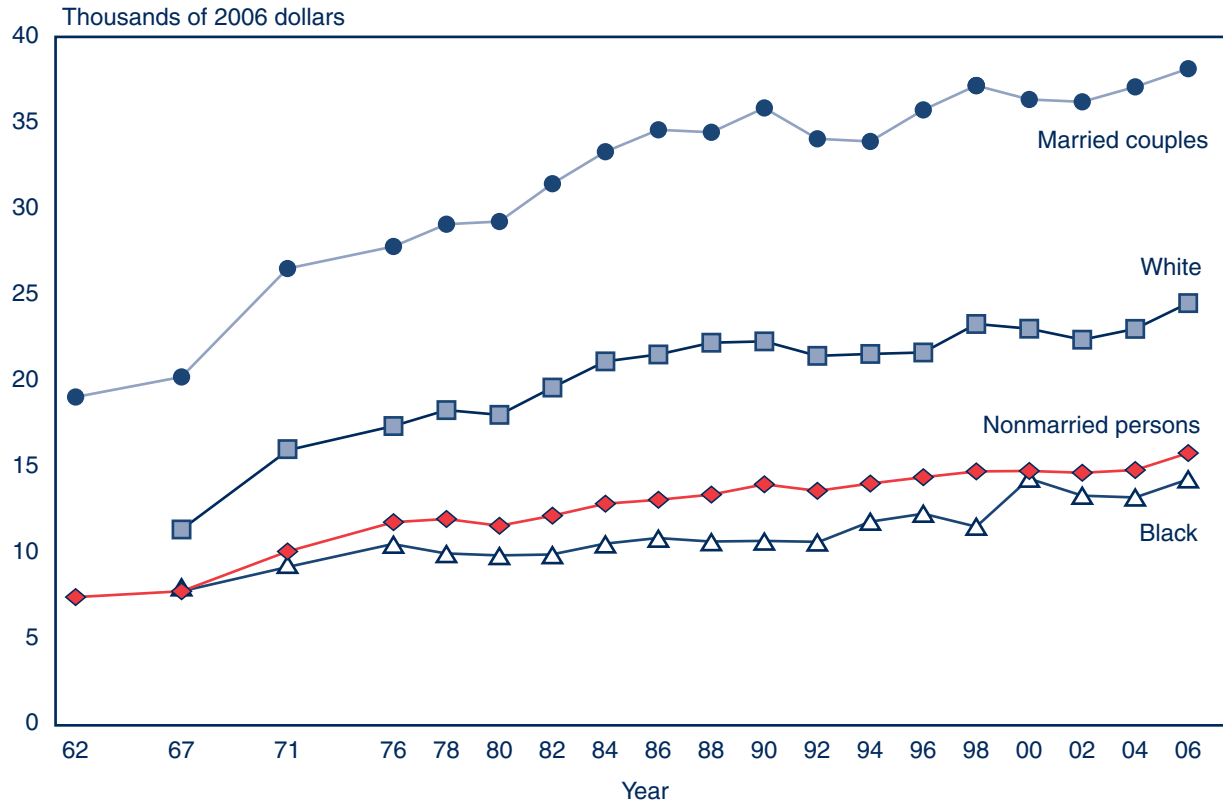
Median income, by marital status, sex of nonmarried persons, race, and Hispanic origin, 2006



Median real income has risen substantially over the years.

Between 1962 and 2006, the income of units aged 65 or older increased even when adjusted for inflation. The increase was 99.6% for married couples and 111.2% for nonmarried persons. There were disproportionate increases by race. Between 1967 and 2006, the income of whites increased by 114.8%; that of blacks increased by 77.5%.

Change in median income, by marital status and race, selected years



NOTE: A table presenting detailed data underlying the above chart is available at http://www.socialsecurity.gov/policy/docs/chartbooks/income_aged/2006/text_c06.html.

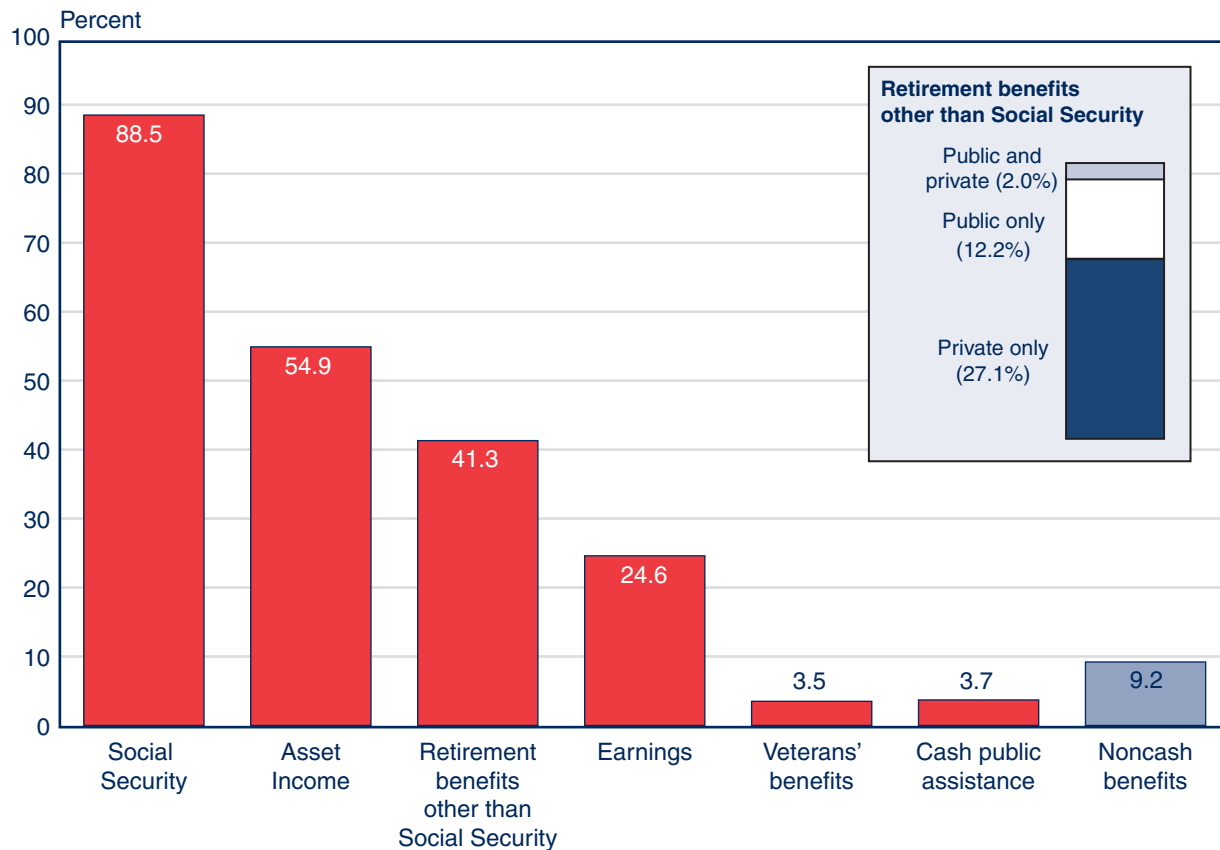
Income Sources

- ▶ **Social Security is the most common source of income for units aged 65 or older.**
- ▶ **Social Security provides at least half of total income for a majority of beneficiary aged units.**
- ▶ **Age groups differ in their likelihood of receiving earnings, but not pensions.**
- ▶ **Receipt of income from major sources varies by race and Hispanic origin.**
- ▶ **Receipt of Social Security has become nearly universal.**
- ▶ **Receipt of asset income is associated with relatively high median income.**
- ▶ **Receipt of earnings and retirement benefits also affects total income.**

Social Security is the most common source of income for units aged 65 or older.

Nearly 9 out of 10 aged units receive Social Security benefits. Asset income is the next most common source of income, received by more than half of the aged. Two-fifths receive retirement benefits other than Social Security, and nearly one-quarter have earnings. Public assistance and veterans' benefits are each received by less than 4%. Noncash benefits, including food stamps and housing and energy assistance, are received by over 9%.

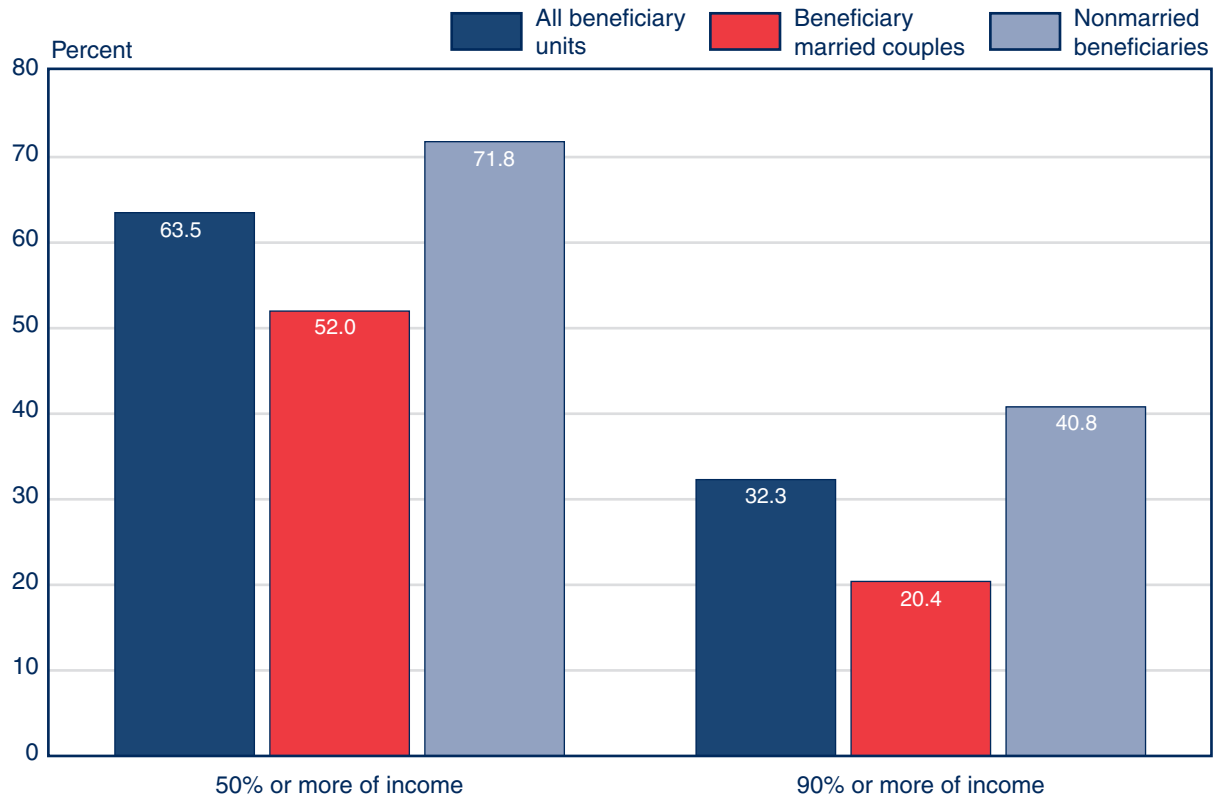
Percentage receiving income from specified source, 2006



Social Security provides at least half of total income for a majority of beneficiary aged units.

In 2006, 89.3% of married couples and 87.9% of nonmarried persons aged 65 or older received Social Security benefits. Social Security was the major source of income (providing at least 50% of total income) for 52% of aged beneficiary couples and 71.8% of aged nonmarried beneficiaries. It was 90% or more of income for 20.4% of aged beneficiary couples and 40.8% of aged nonmarried beneficiaries. Total income excludes withdrawals from savings and lump-sum payments from IRAs or 401(k)s; it also excludes in-kind support, such as food stamps and housing and energy assistance.

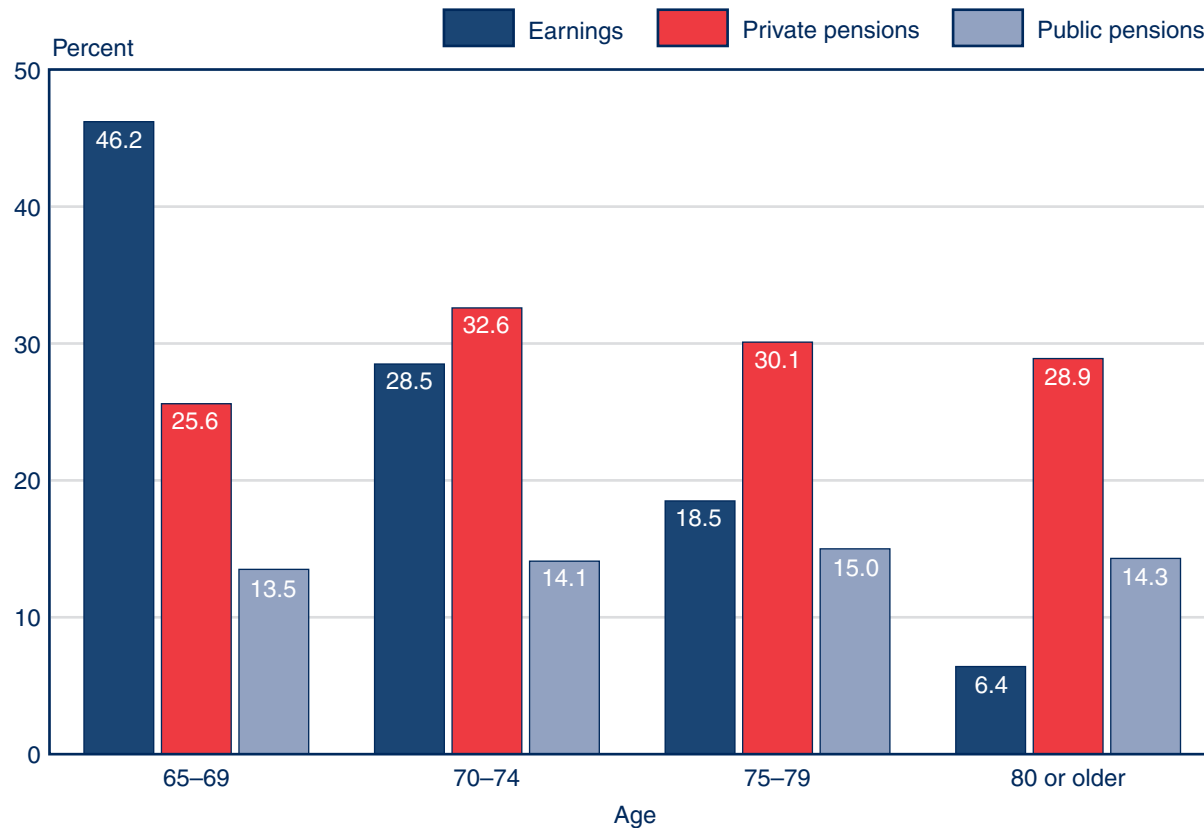
Percentage of aged beneficiary units receiving Social Security benefits, by relative importance of benefits to total income, 2006



Aged groups differ in their likelihood of receiving earnings, but not pensions.

Earnings are received by a greater percentage of aged units in the youngest group than in the oldest group—46.2% compared with 6.4%. In all age groups, there is little or no difference in the likelihood of having a public pension; units 70–74 are most likely to have a private pension.

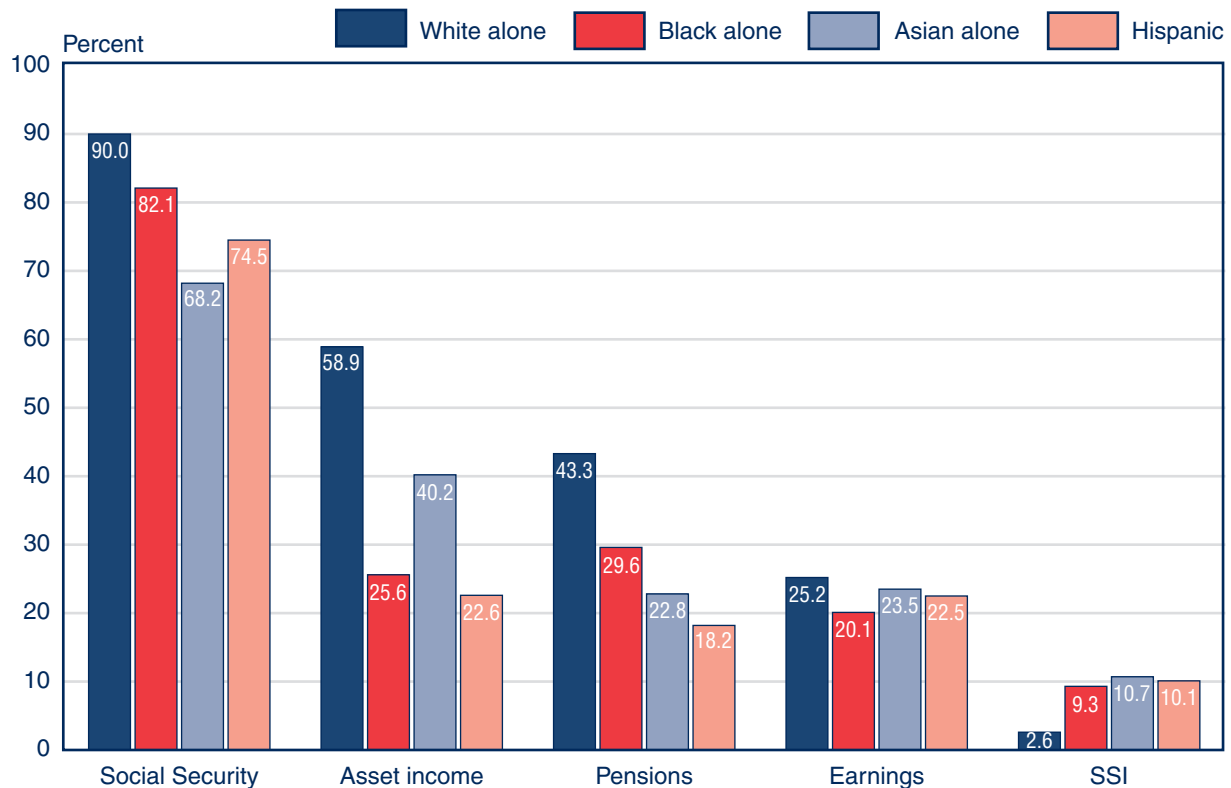
Percentage receiving income from earnings and pensions, by age, 2006



Receipt of income from major sources varies by race and Hispanic origin.

Among units aged 65 or older, whites are most likely to receive Social Security and pensions, followed by blacks, Hispanics, and Asians. Whites are more likely than Asians, blacks, or Hispanics to receive income from assets. Receipt of earnings varies little by race and Hispanic origin. Minority aged units are more likely to receive Supplemental Security Income (SSI) than are whites.

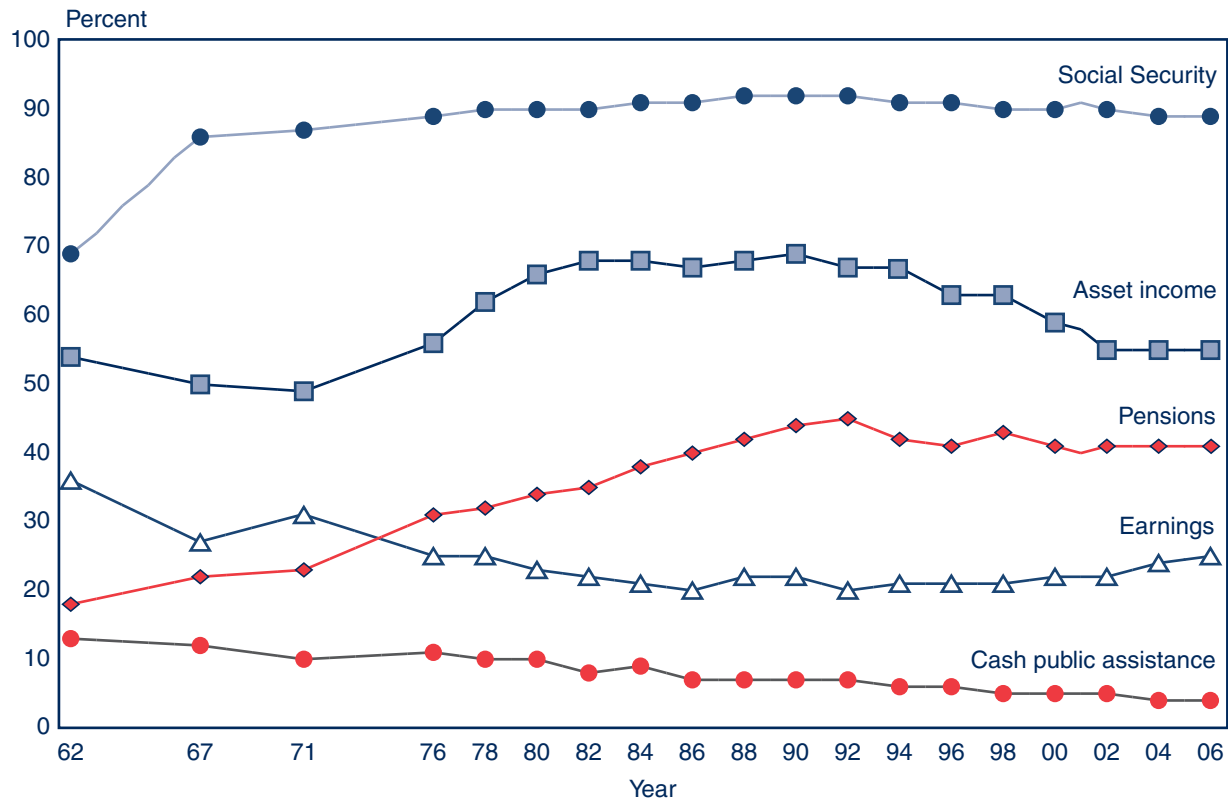
Percentage receiving income from major sources, by race and Hispanic origin, 2006



Receipt of Social Security has become nearly universal.

In 1962, 69% of units aged 65 or older received Social Security benefits; in 2006, 89% of them did. Most of that increase occurred in the 1960s. Receipt of other pension income, which more than doubled from 1962 to 1992, has decreased slightly since then. The proportion of aged units with asset income, which had been about two-thirds since 1980, has dropped since 1990 and leveled off since 2000. The proportion with earnings has declined since 1971 and has been between 20% and 25% since 1980. The proportion receiving public assistance has also declined and is now about a third of its 1962 level.

Change in percentage receiving income from major sources, selected years

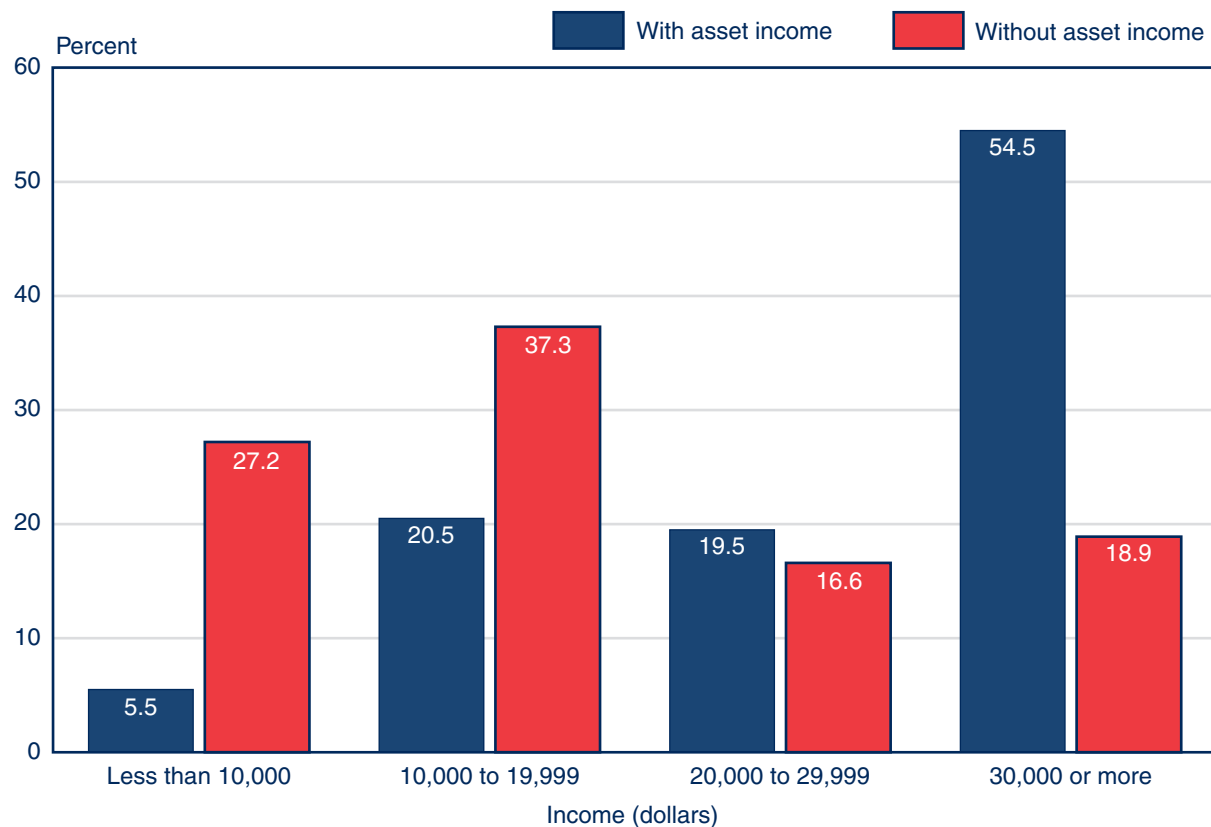


NOTE: A table presenting detailed data underlying the above chart is available at http://www.socialsecurity.gov/policy/docs/chartbooks/income_aged/2006/text_c12.html.

Receipt of asset income is associated with relatively high median income.

The median income of units aged 65 or older with asset income is more than twice that of those with no asset income (\$32,604 compared with \$15,006). Aged units with no asset income are concentrated in the lowest income categories—one-fourth have a total income below \$10,000, and only one-fifth have an income of \$30,000 or more. Among aged units with asset income, 5% have a total income of less than \$10,000, and over half have an income of \$30,000 or more.

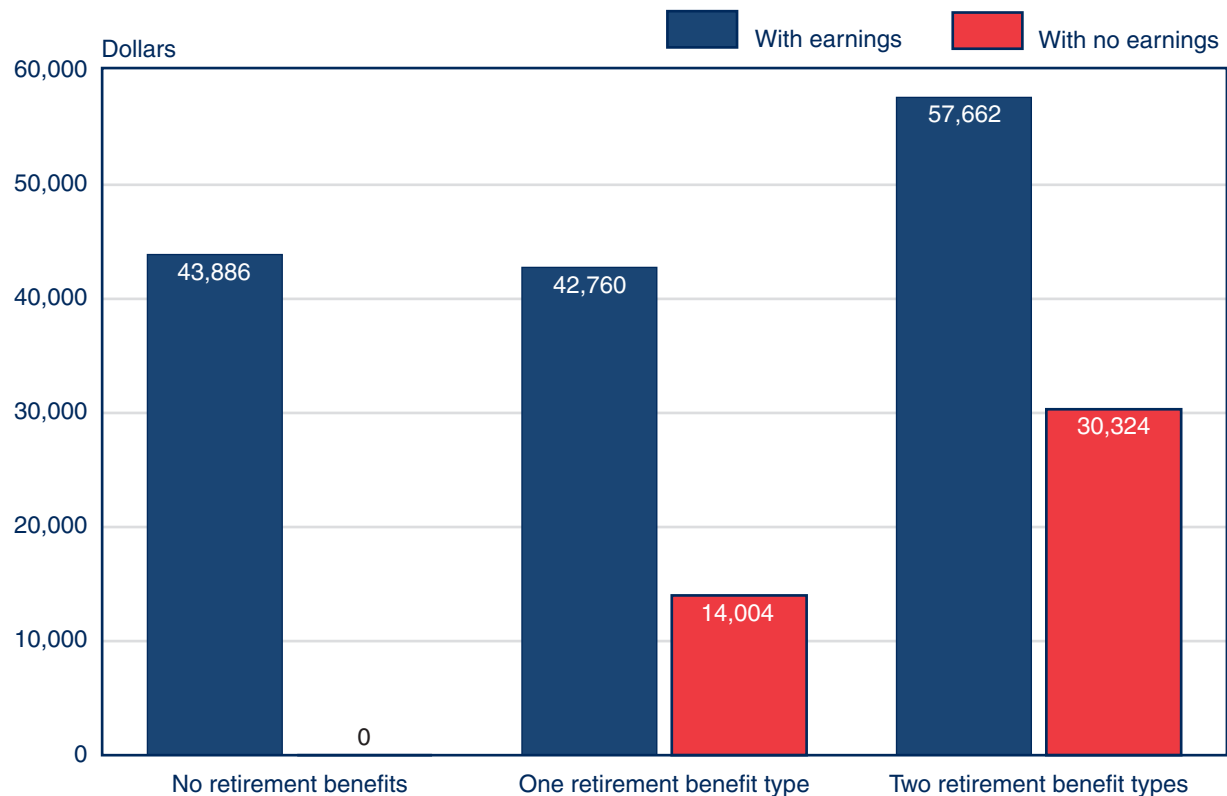
Percentage with various levels of income, by receipt of asset income, 2006



Receipt of earnings and retirement benefits also affects total income.

About 8.7% of units aged 65 or older have no retirement benefits. Of those, 47.6% have earnings, and their median income is \$43,886; 52.4% have no earnings, and their median income is \$0. In the absence of earnings, median income rises markedly with the number of retirement benefit types received, from \$14,004 with one retirement benefit type to \$30,324 with two. For units with both earnings and retirement benefits, median income is \$42,760 for those with one retirement benefit type and \$57,662 for those with two.

Median income, by receipt of earnings and retirement benefits, 2006



NOTE: Retirement benefit types are Social Security, Railroad Retirement, government pension, and private pension or annuity.

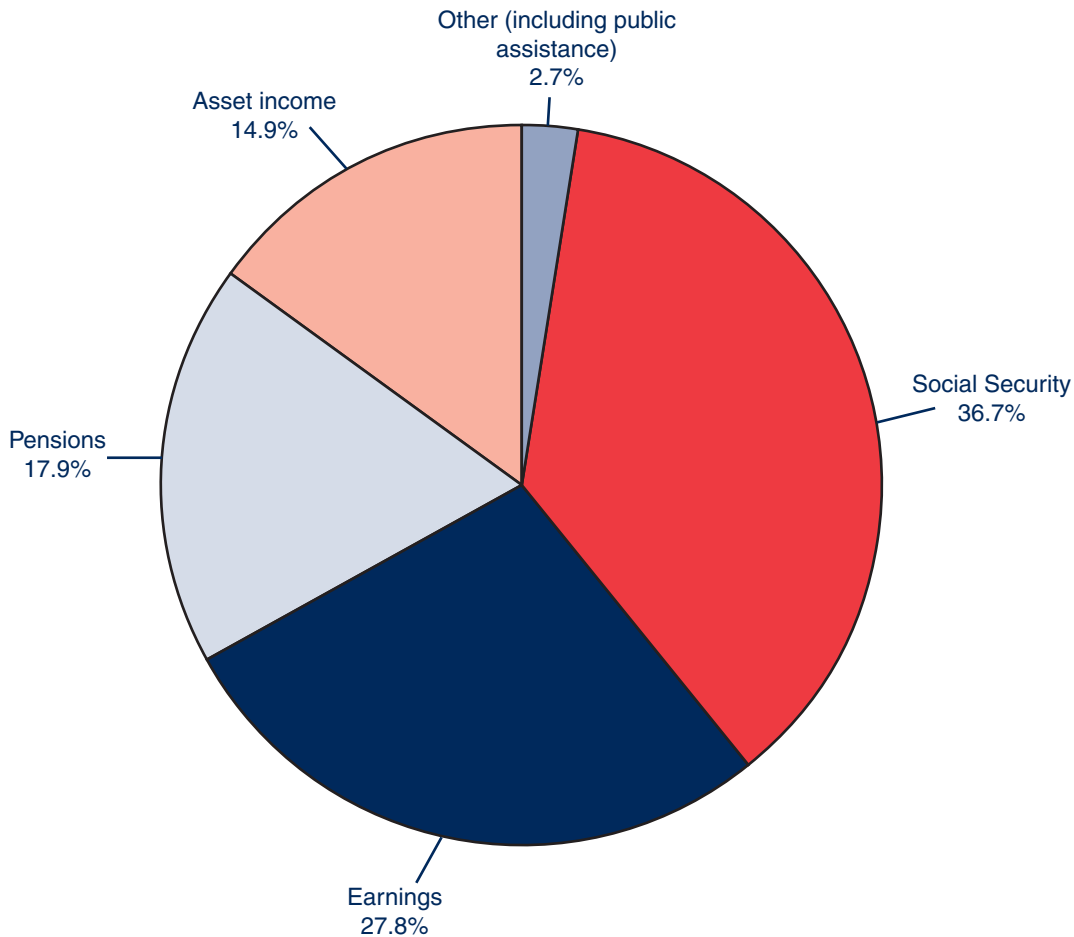
Shares of Aggregate Income

- ▶ **Social Security provides the largest share of aggregate income for units aged 65 or older.**
- ▶ **Shares of income from each source differ greatly by income level.**
- ▶ **Over time, Social Security has provided the largest share of aggregate income for units aged 65 or older.**

Social Security provides the largest share of aggregate income for units aged 65 or older.

Aggregate income for the aged population comes largely from four sources. Social Security accounts for 36.7%, earnings for 27.8%, pensions for 17.9%, and asset income for 14.9%. Only 2.7% comes from other sources.

Shares of aggregate income, by source, 2006

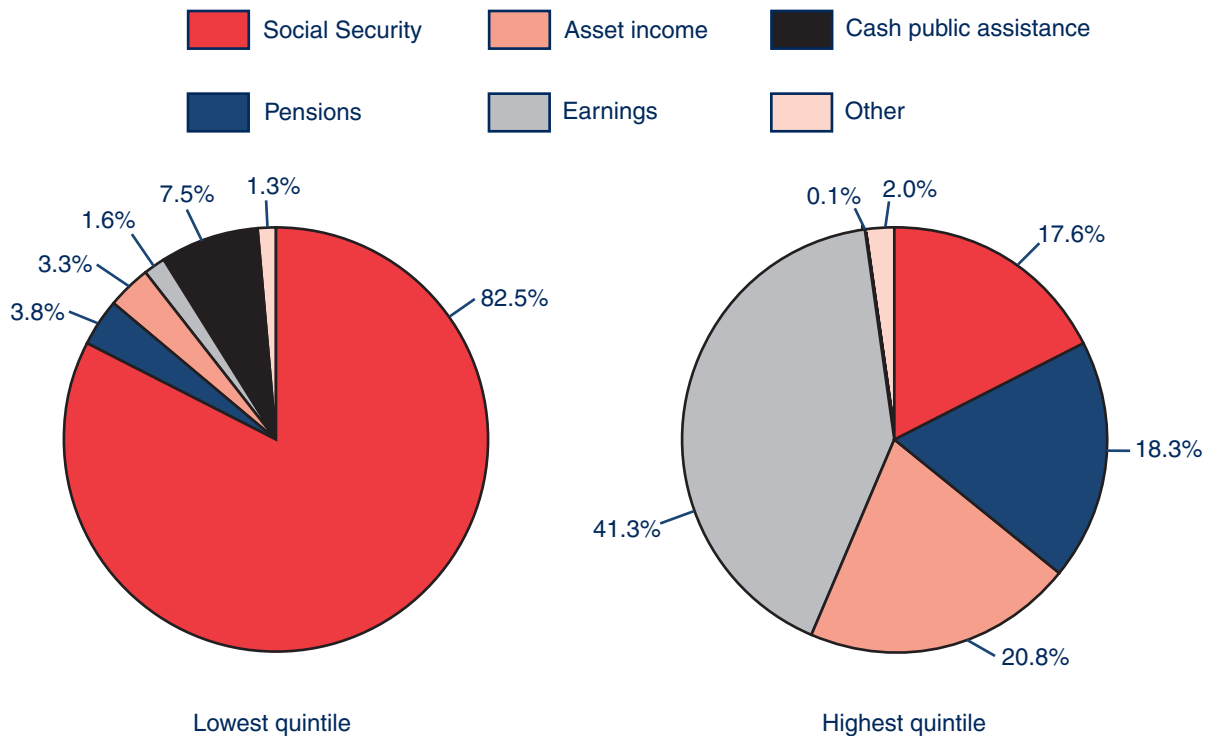


NOTE: Totals do not necessarily equal the sum of the rounded components.

Shares of aggregate income from each source differ greatly by income level.

Units aged 65 or older are ranked by total money income and divided into five groups of equal size called quintiles. The largest share of income for units in the lowest quintile comes from Social Security benefits (82.5%), and public assistance provides the second largest share (7.5%). For units in the highest income quintile, earnings provide the largest share of income (41.3%). Asset income, pensions, and Social Security (20.8%, 18.3%, and 17.6%) are similar in importance.

Shares of aggregate income for the lowest and highest income quintiles, by source, 2006



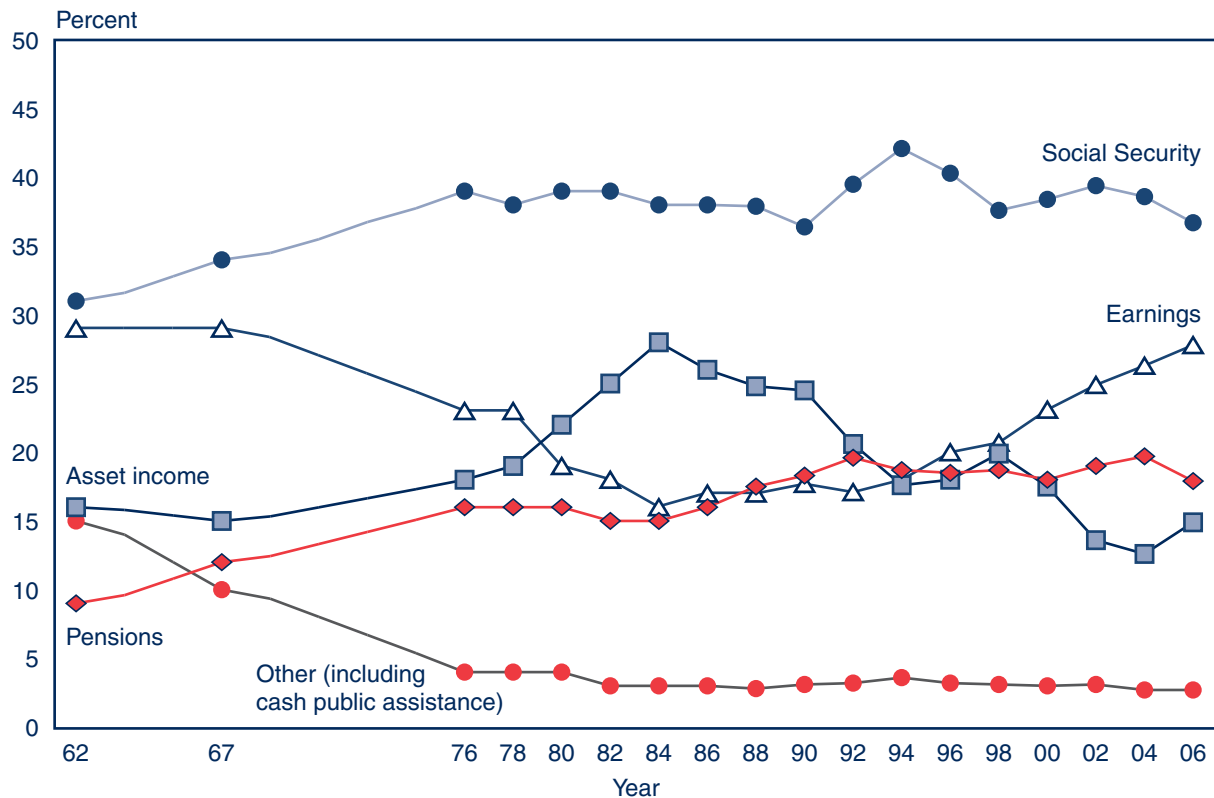
NOTES: The quintile limits for aged units for 2006 are \$11,519, \$18,622, \$28,911, and \$50,064.

Totals do not necessarily equal the sum of the rounded components.

Over time, Social Security has provided the largest share of aggregate income for units aged 65 or older.

In 1962, it provided the largest share, followed closely by earnings. In 2006, Social Security continued to provide the largest share, but by a wider margin compared with the other major sources of income. The share from asset income increased for over 20 years but has generally declined since the mid-1980s. The share from earnings has had the opposite pattern—declining until the mid-1980s and generally increasing since then. The share from pensions had doubled by the early 1990s but has since leveled off. The share from other income had declined since the mid-1980s but has since leveled off.

Change in shares of aggregate income, by source, selected years



NOTES: Totals do not necessarily equal the sum of the rounded components.

A table presenting detailed data underlying the above chart is available at http://www.socialsecurity.gov/policy/docs/chartbooks/income_aged/2006/text_c18.html.

Family Income of Persons 65 or Older

- ▶ The demographic composition of the elderly varies across age groups.
- ▶ The aged are an economically diverse group.
- ▶ Family total income varies by age and sex.
- ▶ Family median income varies by sex, race, and Hispanic origin.
- ▶ Family income sources vary by sex.
- ▶ Social Security was the major source of family total income for slightly more than half of persons 65 or older in families receiving benefits.

The demographic composition of the elderly varies across age groups.

The proportion of men to women differs little for ages 65–69, but women 80 or older greatly outnumber men 80 or older. Persons 65–69 are nearly twice as likely to married than nonmarried, but more than half of persons 80 or older are widowed. Racial and ethnic composition varies across age cohorts as well; the younger cohorts are represented by larger proportions of minorities than the older cohorts. Approximately one-fifth of elderly persons live with nonspouse family, consistent across age categories.

Percentage distribution of persons 65 or older, 2006

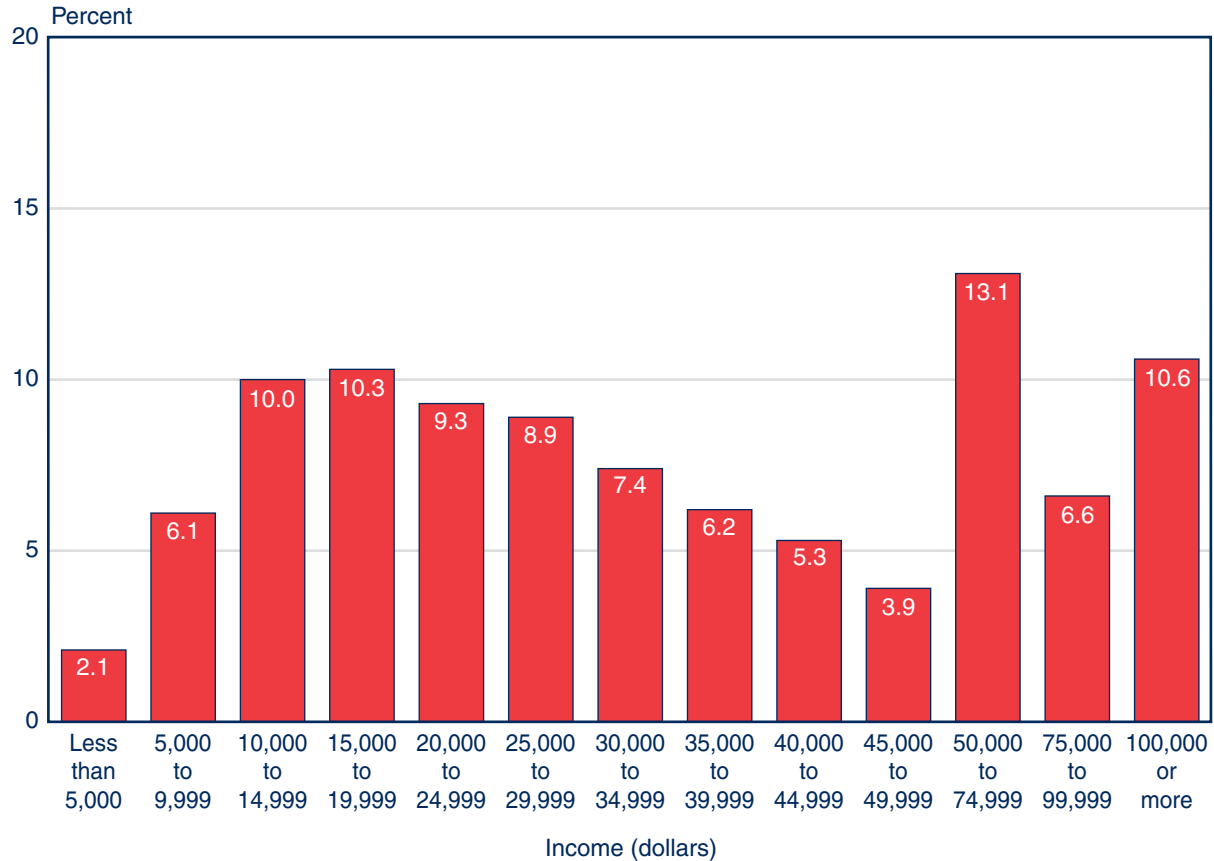
	65 or older	65–69	70–74	75–79	80 or older
Sex					
Men	42.9	47.2	44.5	43.2	36.2
Women	57.1	52.8	55.5	56.8	63.8
Marital status					
Married	55.3	66.0	61.7	55.9	37.0
Nonmarried	44.7	34.0	38.3	44.1	63.0
Widowed	29.7	14.0	22.4	30.7	53.1
Divorced	8.7	12.8	9.7	7.5	4.3
Never married	3.9	4.6	3.5	3.5	3.6
Race					
White alone	86.8	85.4	85.2	87.7	89.0
Black alone	8.6	9.3	10.1	7.7	7.0
Asian alone	3.3	3.5	3.3	3.4	2.9
Hispanic origin	6.7	7.8	7.3	6.5	5.2
Living with nonspouse family	20.7	21.8	20.1	18.7	21.8
Total number of aged persons (thousands)	36,035	10,629	8,369	7,567	9,471

NOTE: Totals do not necessarily equal the sum of the rounded components.

The aged are an economically diverse group.

The median family income for persons aged 65 or older is \$31,744, but there are wide differences within the total group. Approximately 8.2% have family income of under \$10,000, and roughly 30.3% have family income of \$50,000 or more.

Percentage with various levels of family income, 2006



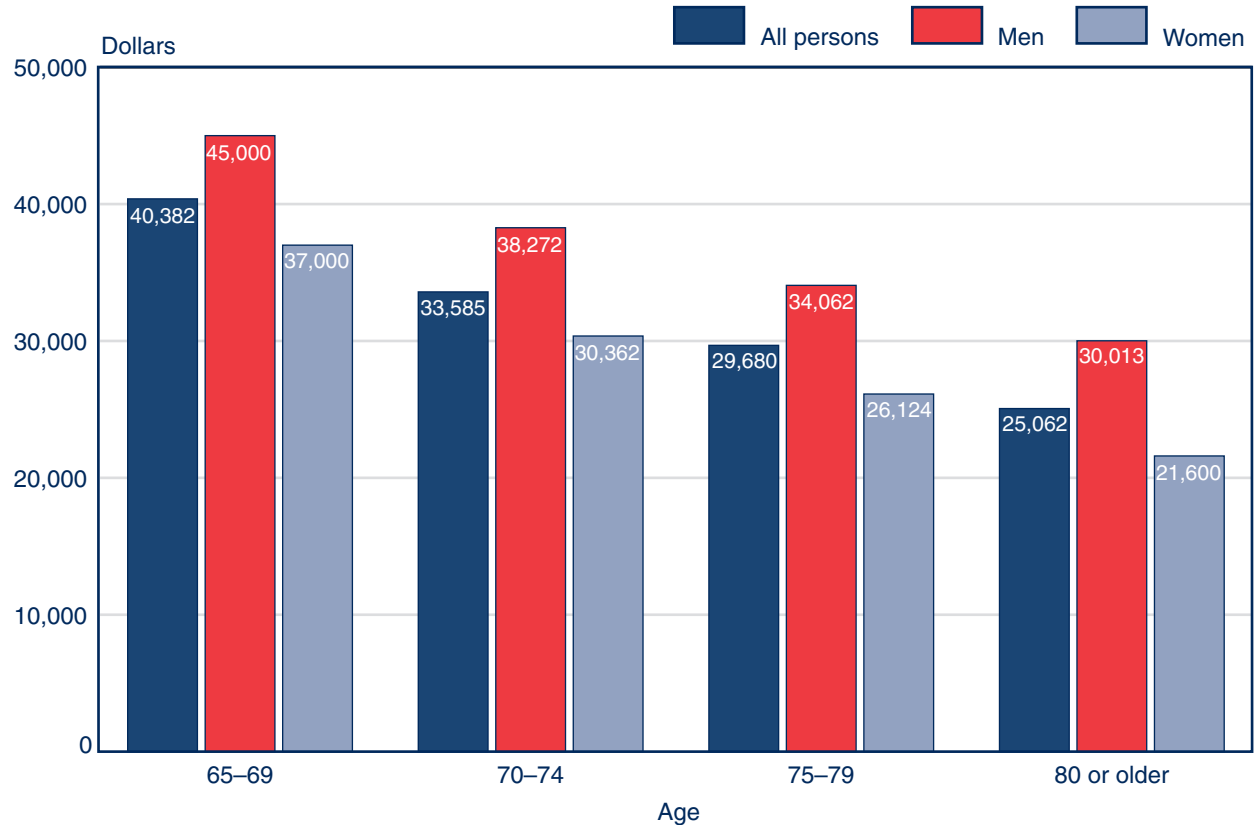
NOTES: Totals do not necessarily equal the sum of the rounded components.

Family income of persons 65 or older tends to be higher than the income of aged units 65 or older because it includes income from all family members, not just a spouse. In addition, each elderly person counts individually rather than as part of a marital unit; statistics based on aged units give greater weight to nonmarried persons as compared to statistics based on persons.

Family total income varies by age and sex.

Median family total income is highest for the youngest cohorts. In addition, in all age groups, women have lower median family total income than men, from \$37,000 for woman aged 65 to 69 to \$21,600 for women aged 80 or older.

Median family income, by sex and age, 2006

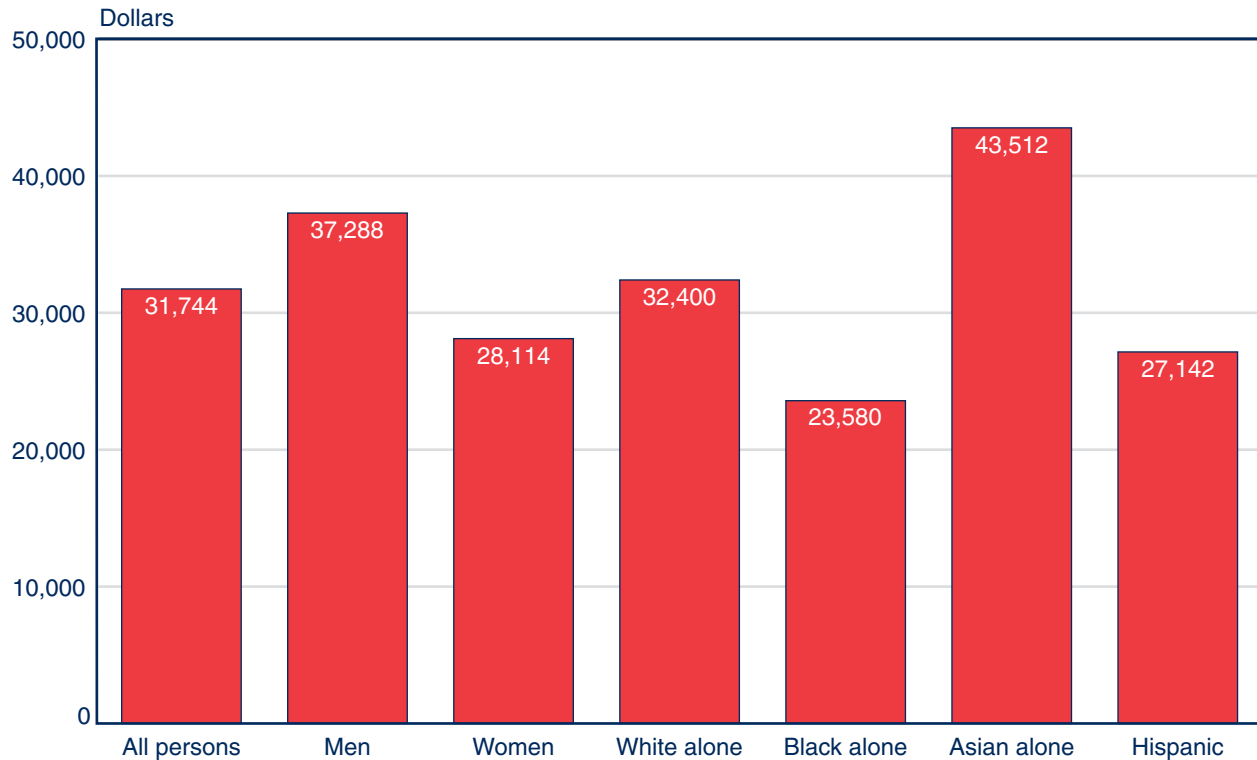


NOTE: Family income of persons 65 or older tends to be higher than the income of aged units 65 or older because it includes income from all family members, not just a spouse. In addition, each elderly person counts individually rather than as part of a marital unit; statistics based on aged units give greater weight to nonmarried persons as compared to statistics based on persons.

Family median income varies by sex, race, and Hispanic origin.

Median family income of men is nearly one-third higher than it is for women. Asians have the highest median family income, followed by whites, Hispanics, and blacks.

Median family income, by sex, race, and Hispanic origin, 2006

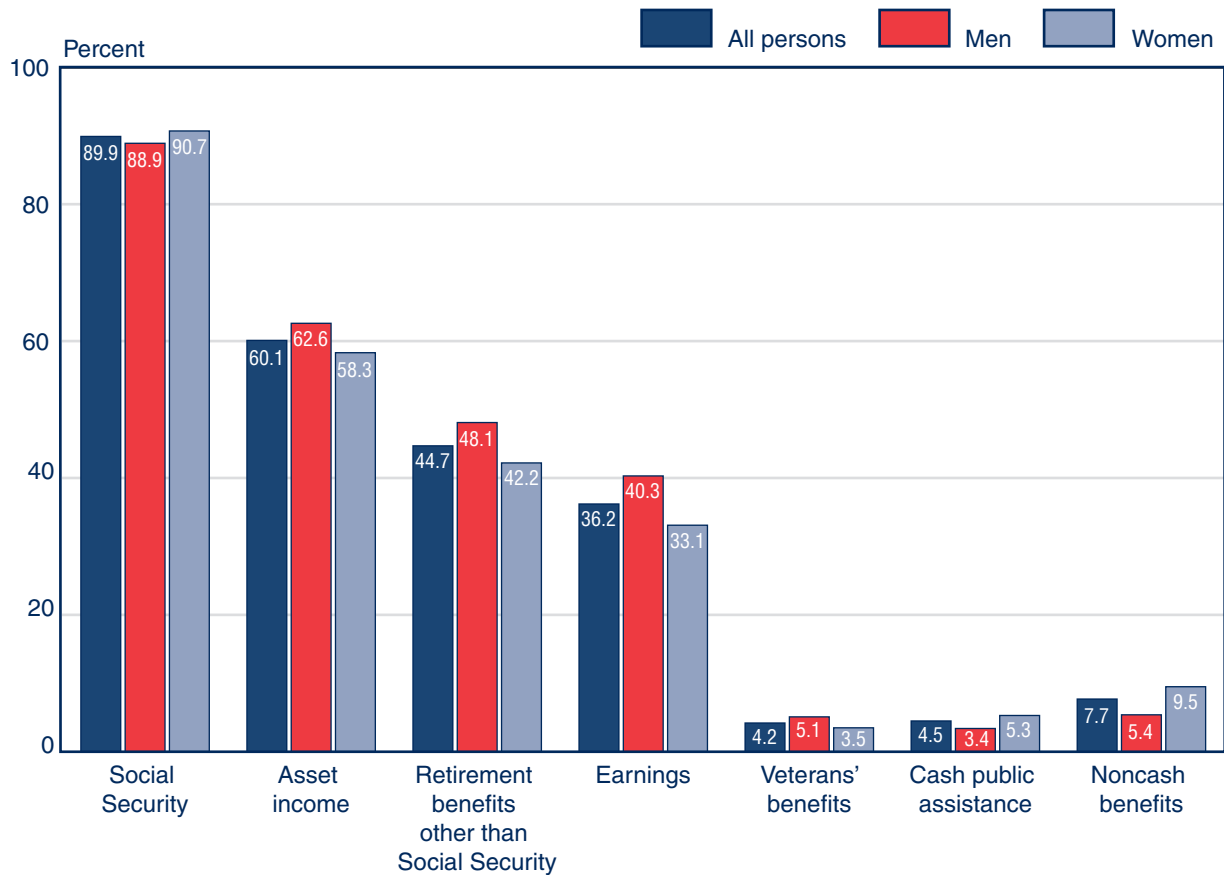


NOTE: Family income of persons 65 or older tends to be higher than the income of aged units 65 or older because it includes income from all family members, not just a spouse. In addition, each elderly person counts individually rather than as part of a marital unit; statistics based on aged units give greater weight to nonmarried persons as compared to statistics based on persons.

Family income sources vary by sex.

Men are more likely to be in families receiving all sources of income than women, except for Social Security and public assistance.

Family income source, by sex, 2006

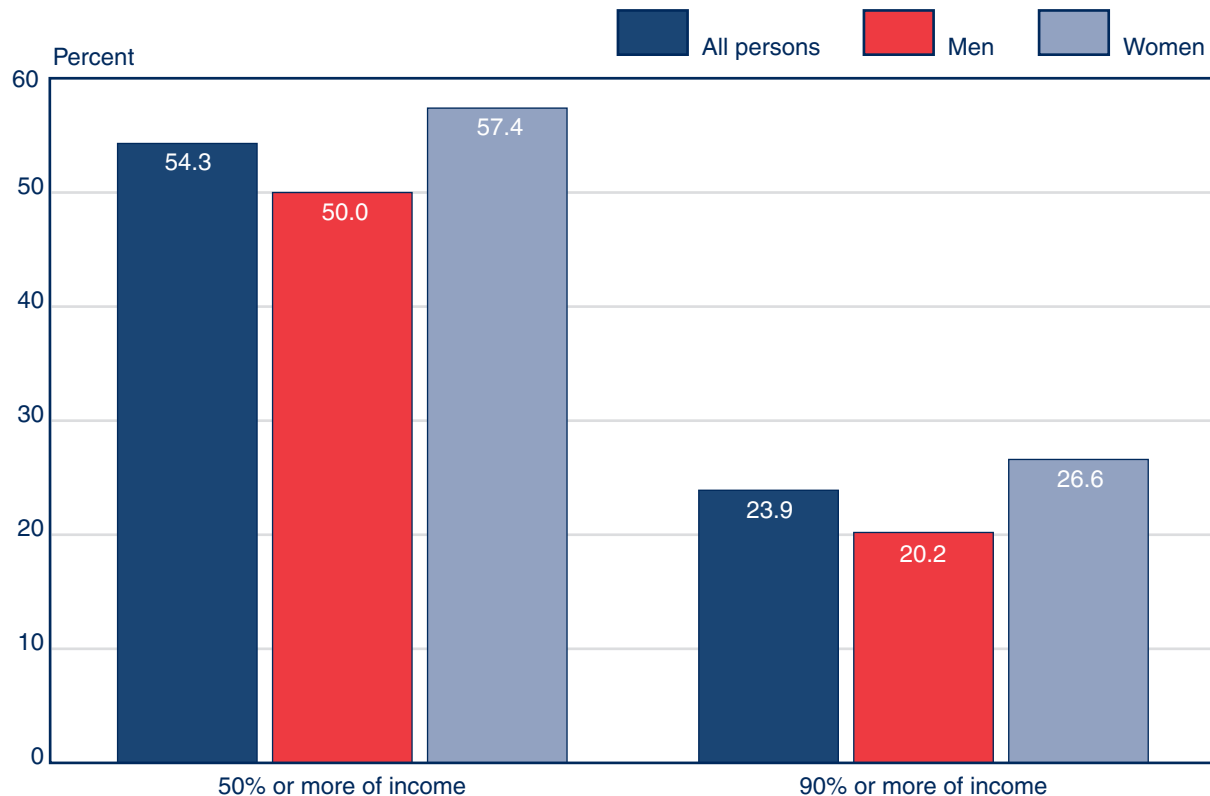


NOTE: Family income of persons 65 or older tends to be higher than the income of aged units 65 or older because it includes income from all family members, not just a spouse. In addition, each elderly person counts individually rather than as part of a marital unit; statistics based on aged units give greater weight to nonmarried persons as compared to statistics based on persons.

Social Security was the major source of family total income for slightly more than half of persons 65 or older in families receiving benefits.

For nearly one-quarter of the elderly, Social Security was most of family total income. Social Security was the predominant source of family income for one-fifth of elderly men in beneficiary families and over one-quarter of elderly women in beneficiary families. Social Security accounted for less than half of family income for half of the elderly men in beneficiary families and 42.6% of elderly women in beneficiary families.

Percentage of aged persons in families receiving Social Security benefits, by sex and relative importance of family benefits to family total income, 2006



NOTE: Family income of persons 65 or older tends to be higher than the income of aged units 65 or older because it includes income from all family members, not just a spouse. In addition, each elderly person counts individually rather than as part of a marital unit; statistics based on aged units give greater weight to nonmarried persons as compared to statistics based on persons.

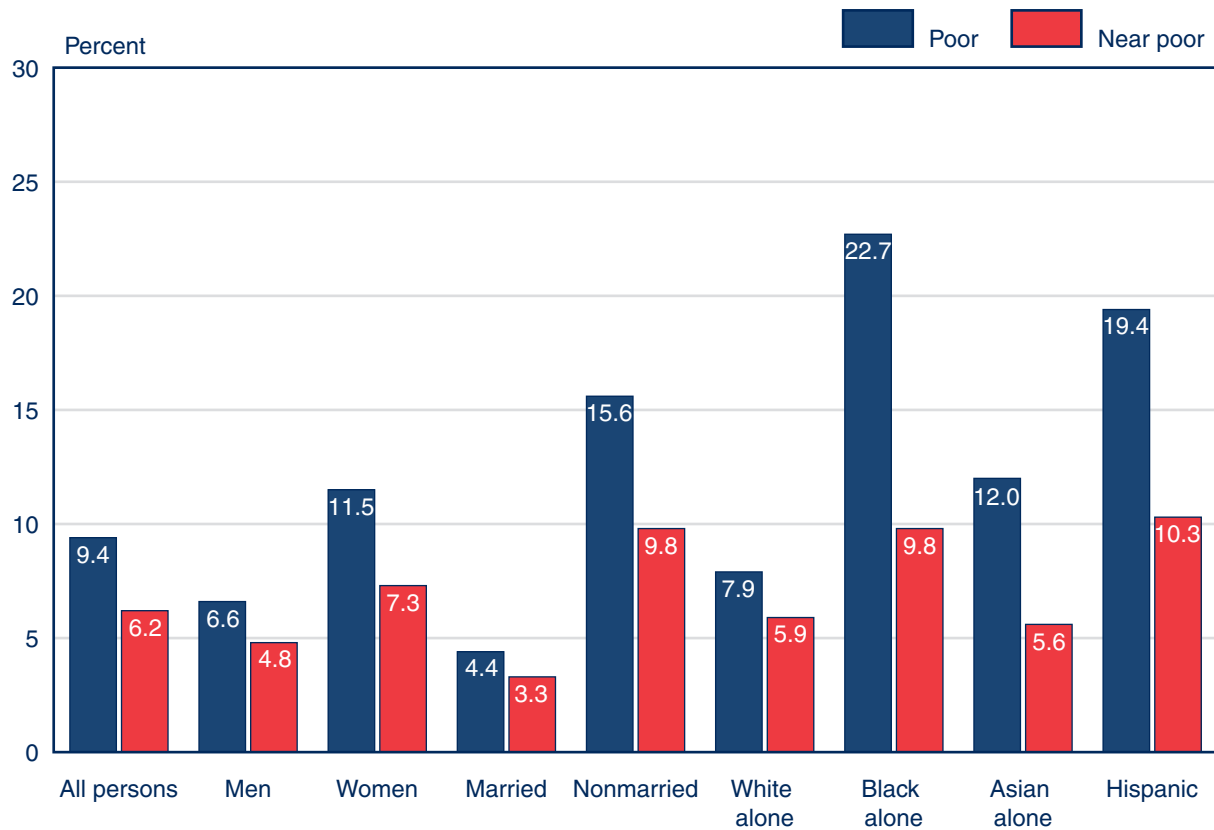
Poverty Status, Based on Family Income

- ▶ High proportions of nonmarried and minority persons aged 65 or older are poor or near poor.
- ▶ The oldest age group (80 or older) has the highest poverty rate.

High proportions of nonmarried and minority persons aged 65 or older are poor or near poor.

The variations in family income by sex, marital status, and race are reflected in the poverty rates for those subgroups of the aged. Nonmarried persons, blacks, and Hispanics have the highest poverty rates, ranging from 15.6% to 22.7%. An additional 9.8% to 10.3% of nonmarried persons, blacks, and Hispanics have incomes between the poverty line and 125% of the poverty line (the near poor).

Poverty status, by sex, marital status, race, and Hispanic origin, 2006



The oldest age group (80 or older) has the highest poverty rate.

In keeping with the lower family income of older age groups, those groups generally have higher rates of poverty and near poverty (income between the poverty line and 125% of the poverty line).

Poverty status, by age, 2006

