



UNIVERSITAT POLITÈCNICA DE CATALUNYA
BARCELONATECH

Escola Superior d'Enginyeries Industrial,
Aeroespacial i Audiovisual de Terrassa

Estudi sobre l'aplicabilitat de piezoelèctrics com a sensors per a la previsió del dany en impacte.

Document:

Annex 1 - Imatges de ruptura

Autor/Autora:

Ferran Urquia Sanz

Director/Directora - Codirector/Codirectora:

Ernest Bernat Masó - Lluís Ferrer

Titulació:

Doble grau en Enginyeria electrònica industrial i automàtica i Enginyeria mecànica

Convocatòria:

Tardor, 2021.

TREBALL DE FI D'ESTUDIS



Índex

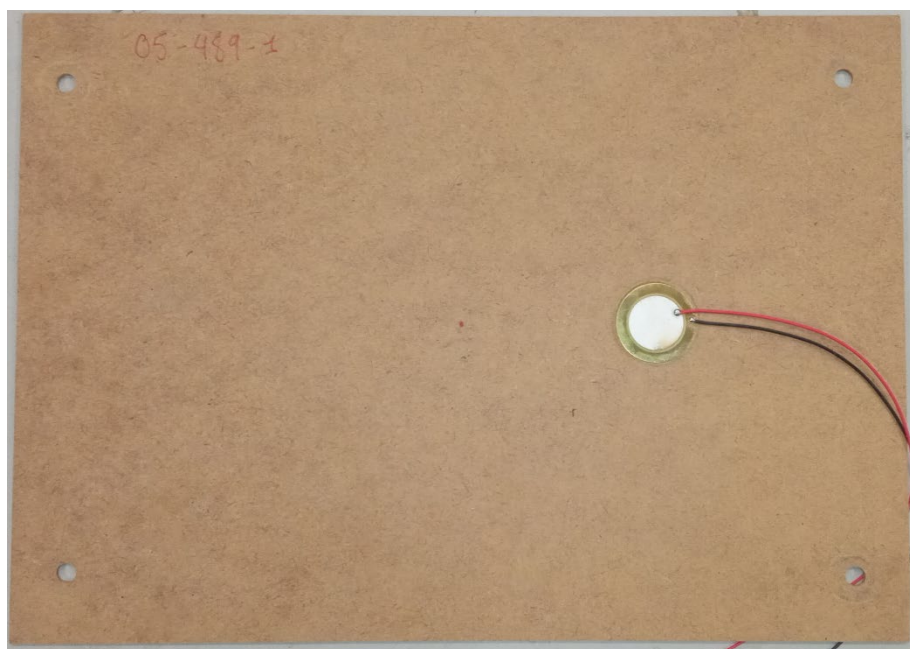
ASSAIG 05-489-1	3
ASSAIG 05-489-2	3
ASSAIG 09-489-1	4
ASSAIG 09-489-2	4
ASSAIG 17-489-1	4
ASSAIG 17-799-1	5
ASSAIG 19-489-1	6
ASSAIG 19-489-1	6
ASSAIG 23-799-1	7
ASSAIG 23-799-1	8
ASSAIG 28-489-1	9
ASSAIG 28-489-1D.....	10
ASSAIG 28-489-1i.....	11
ASSAIG 28-489-2	12
ASSAIG 28-489-2D.....	13
ASSAIG 28-489-2i.....	14
ASSAIG 28-799-1	15
ASSAIG 28-799-2	16
ASSAIG 34-799-1	17
ASSAIG 34-799-2	18
ASSAIG 37-489-1	19
ASSAIG 37-489-1D.....	20
ASSAIG 37-489-1i.....	21
ASSAIG 37-489-2	22
ASSAIG 37-489-2D.....	23
ASSAIG 37-489-2i.....	24
ASSAIG 40-799-1	25
ASSAIG 40-799-2	26
ASSAIG 47-489-1	26
ASSAIG 47-489-2	28
ASSAIG 56-489-1	29
ASSAIG 56-489-2	30
ASSAIG 65-489-1	31
ASSAIG 65-489-2	32
ASSAIG 65-489-2R.....	33
ASSAIG 86-799-1	34
ASSAIG 86-799-2	35

INTRODUCCIÓ

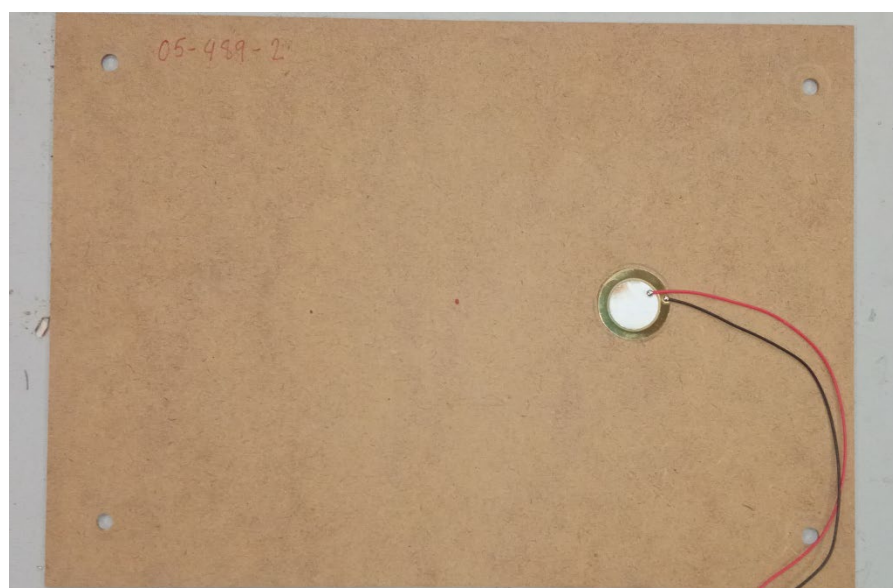
En aquest document s'exposen totes les imatges de fallida dels substrats impactats durant l'execució de la part experimental.

Per als casos de baixes energies d'impacte on no hi ha hagut esquerda, s'adjunta només imatge frontal.

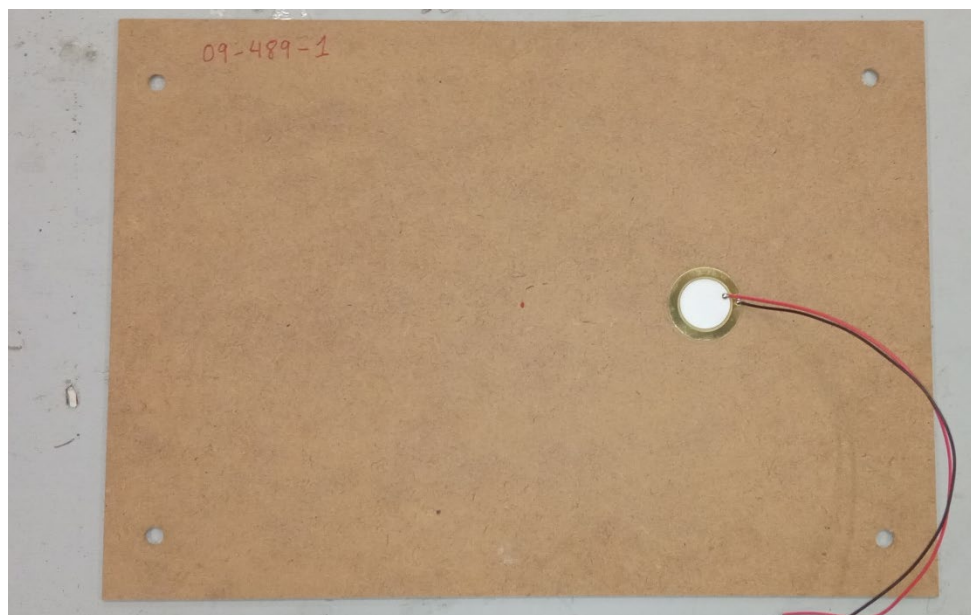
ASSAIG 05-489-1



ASSAIG 05-489-2



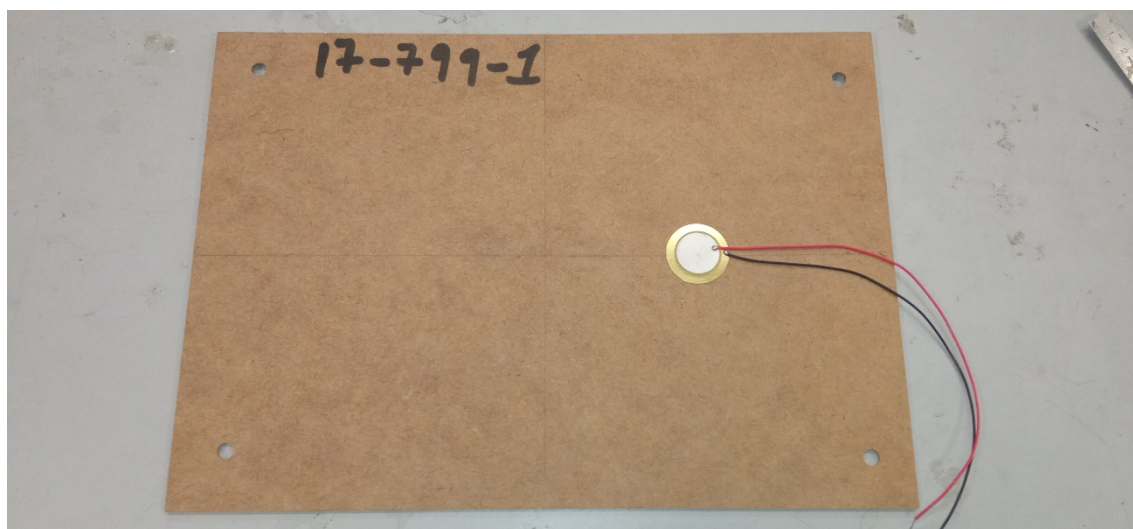
ASSAIG 09-489-1

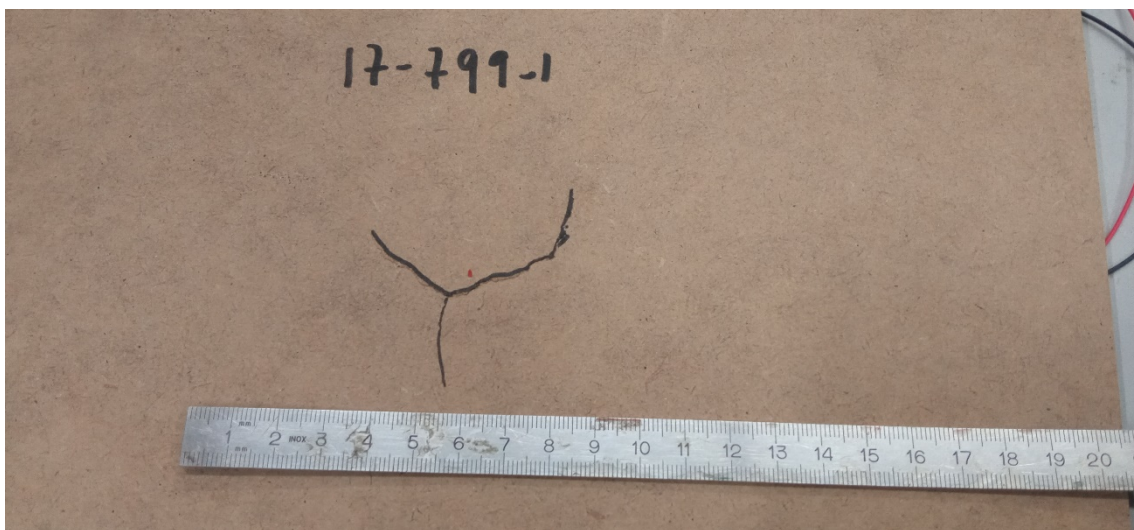


ASSAIG 09-489-2

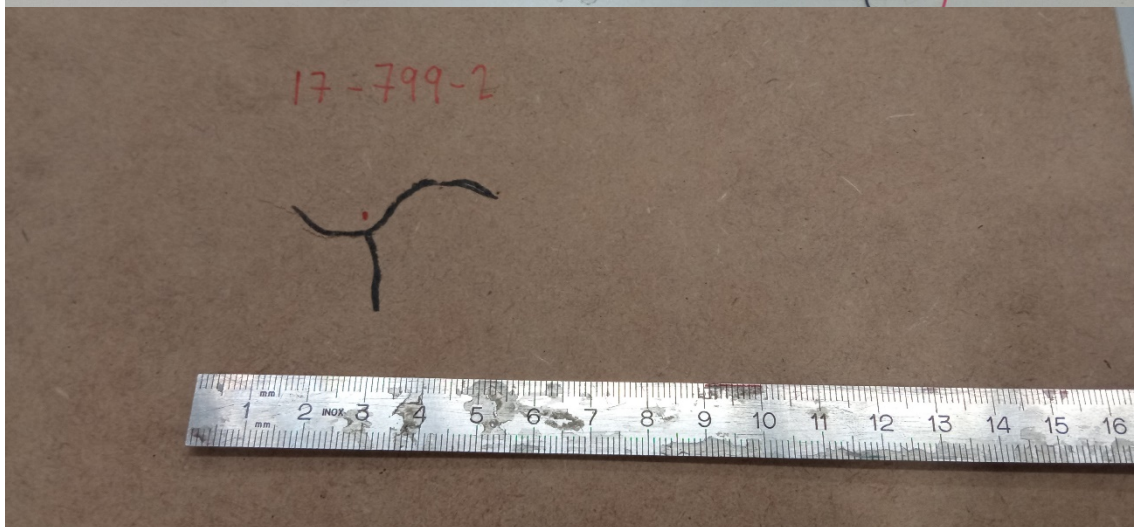
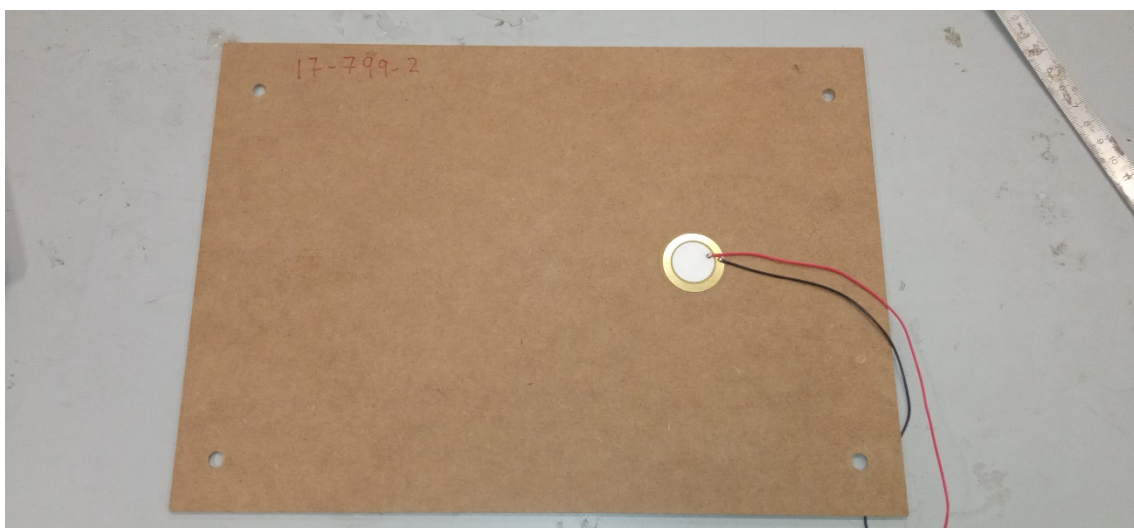
Tampoc existeix ruptura, imatge perduda.

ASSAIG 17-489-1

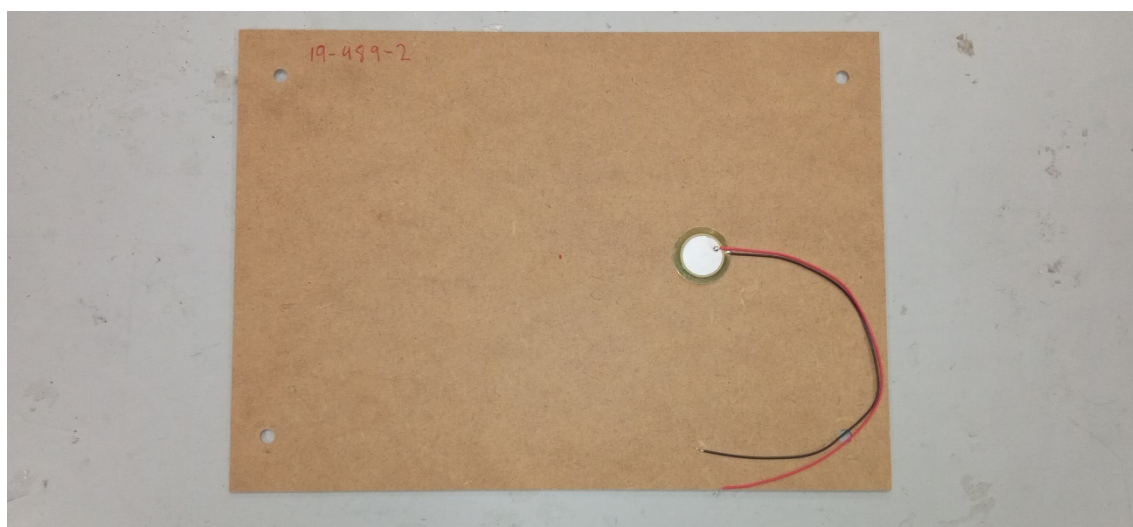
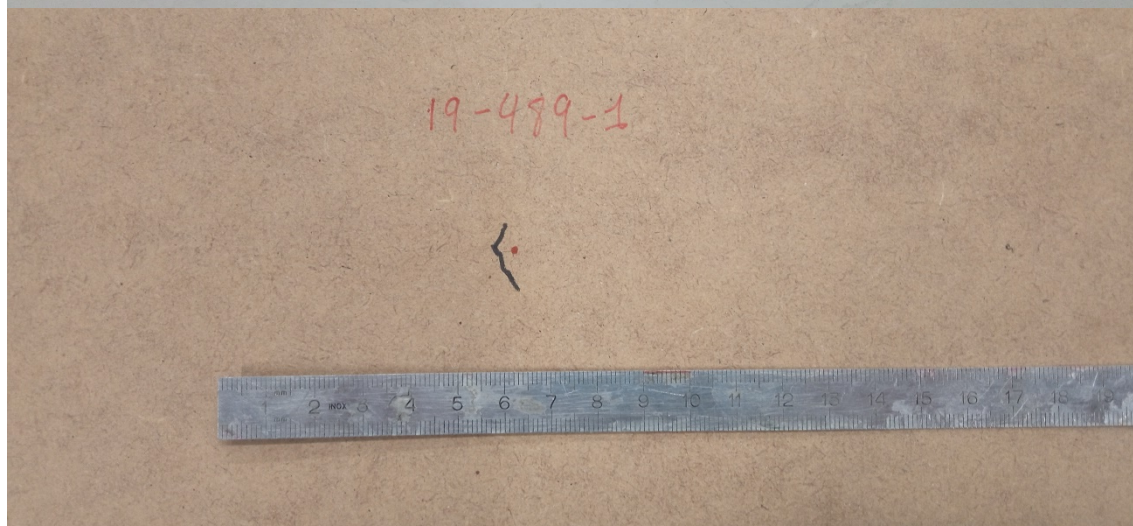
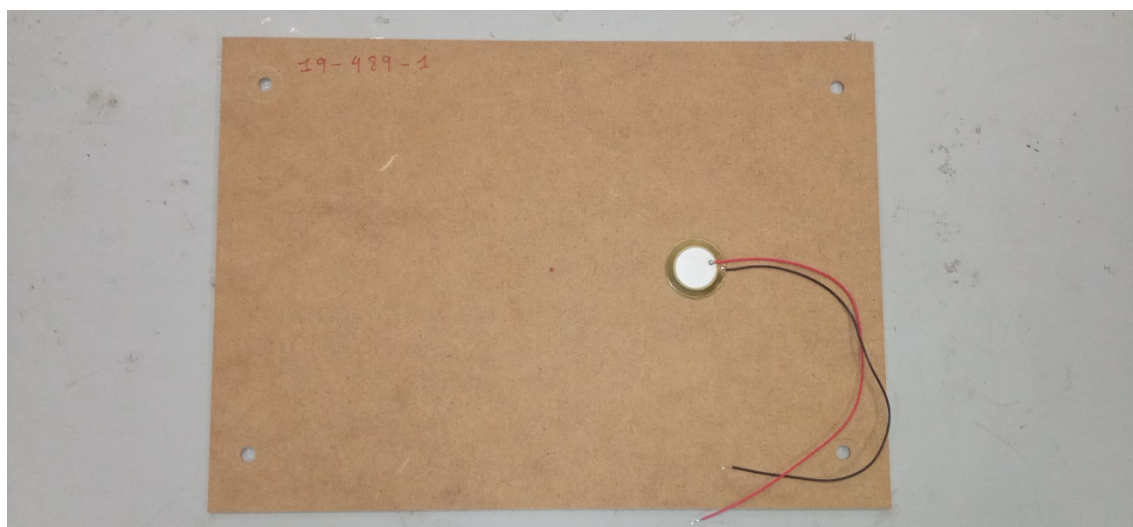




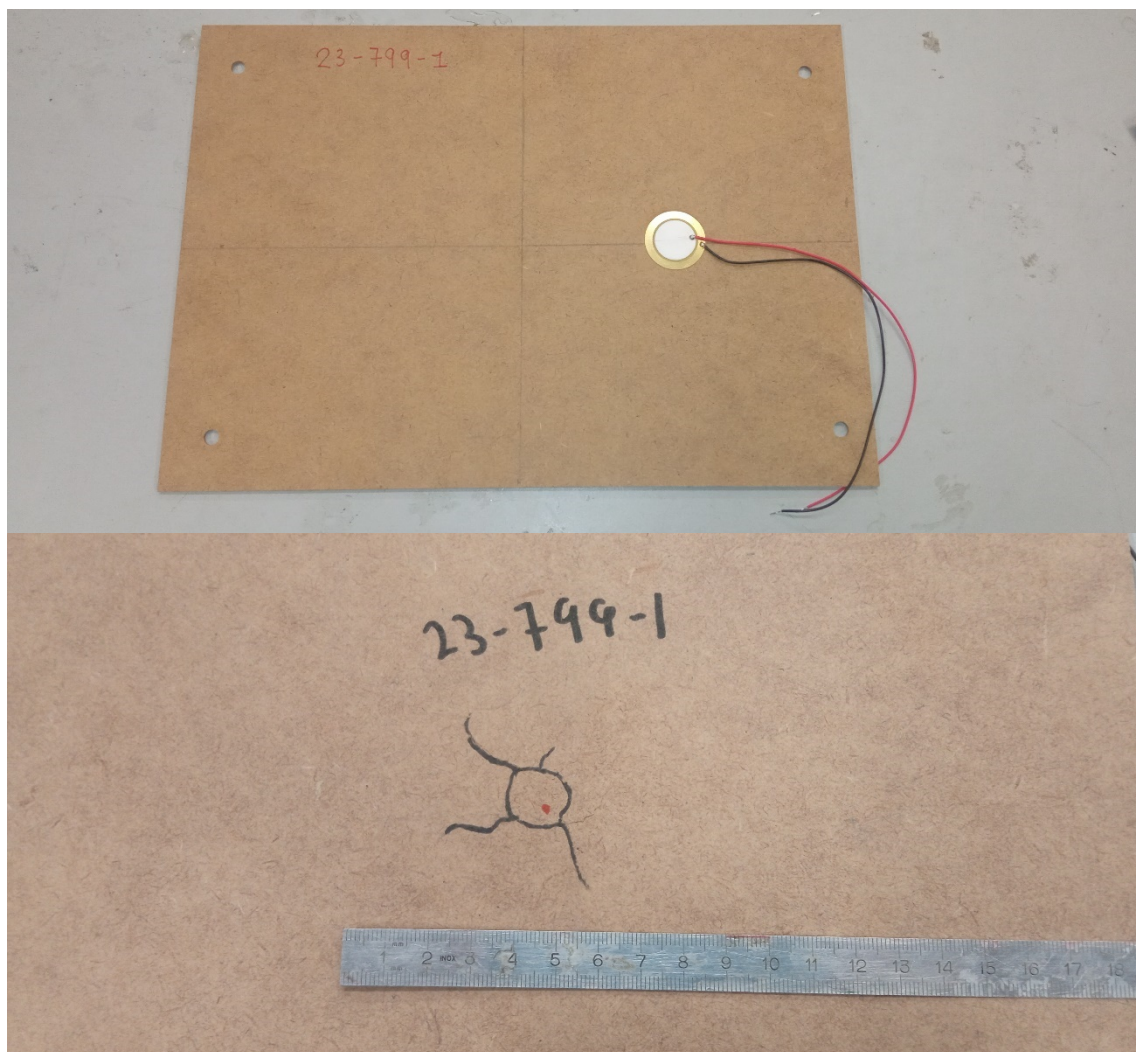
ASSAIG 17-799-1



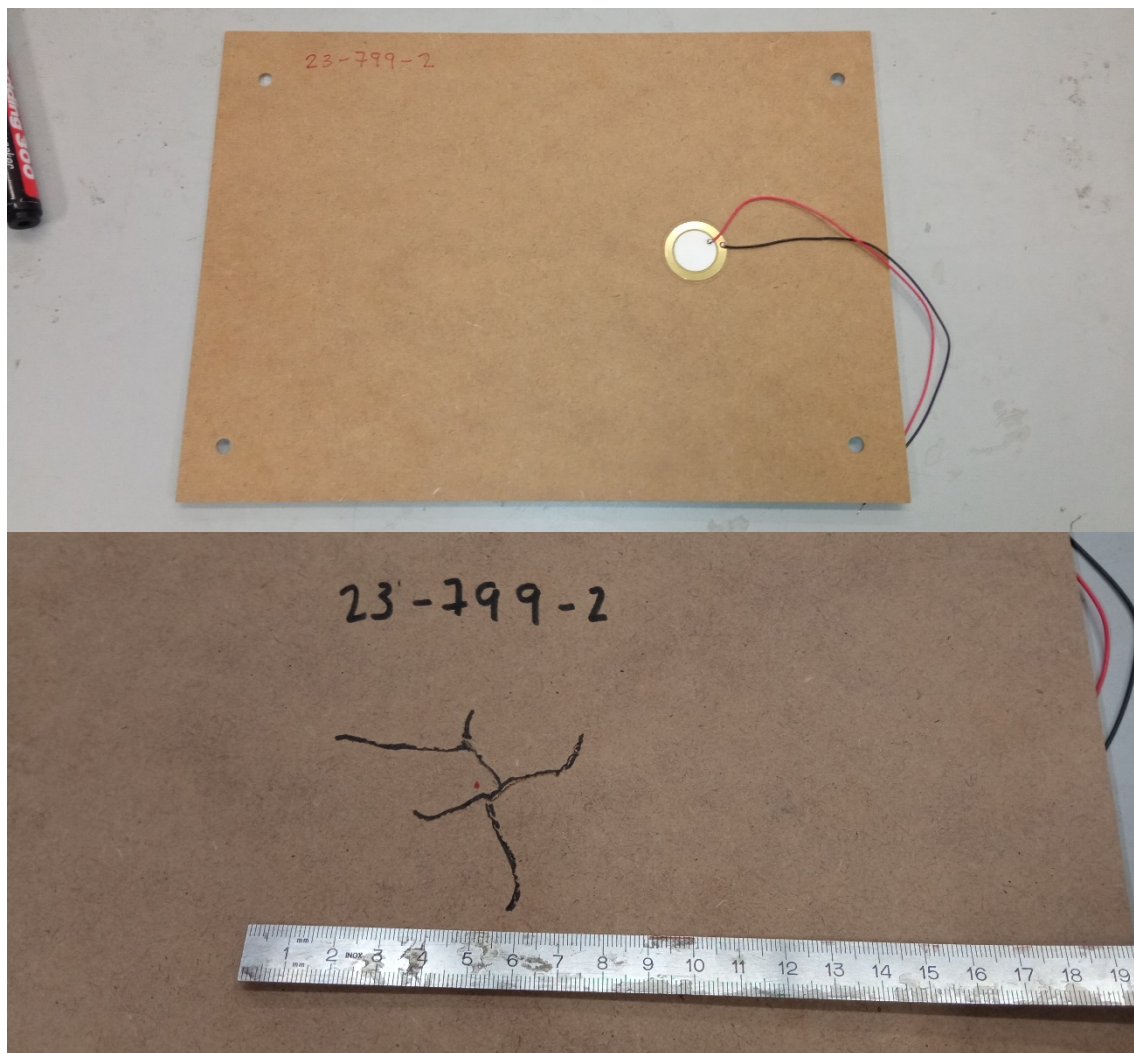
ASSAIG 19-489-1



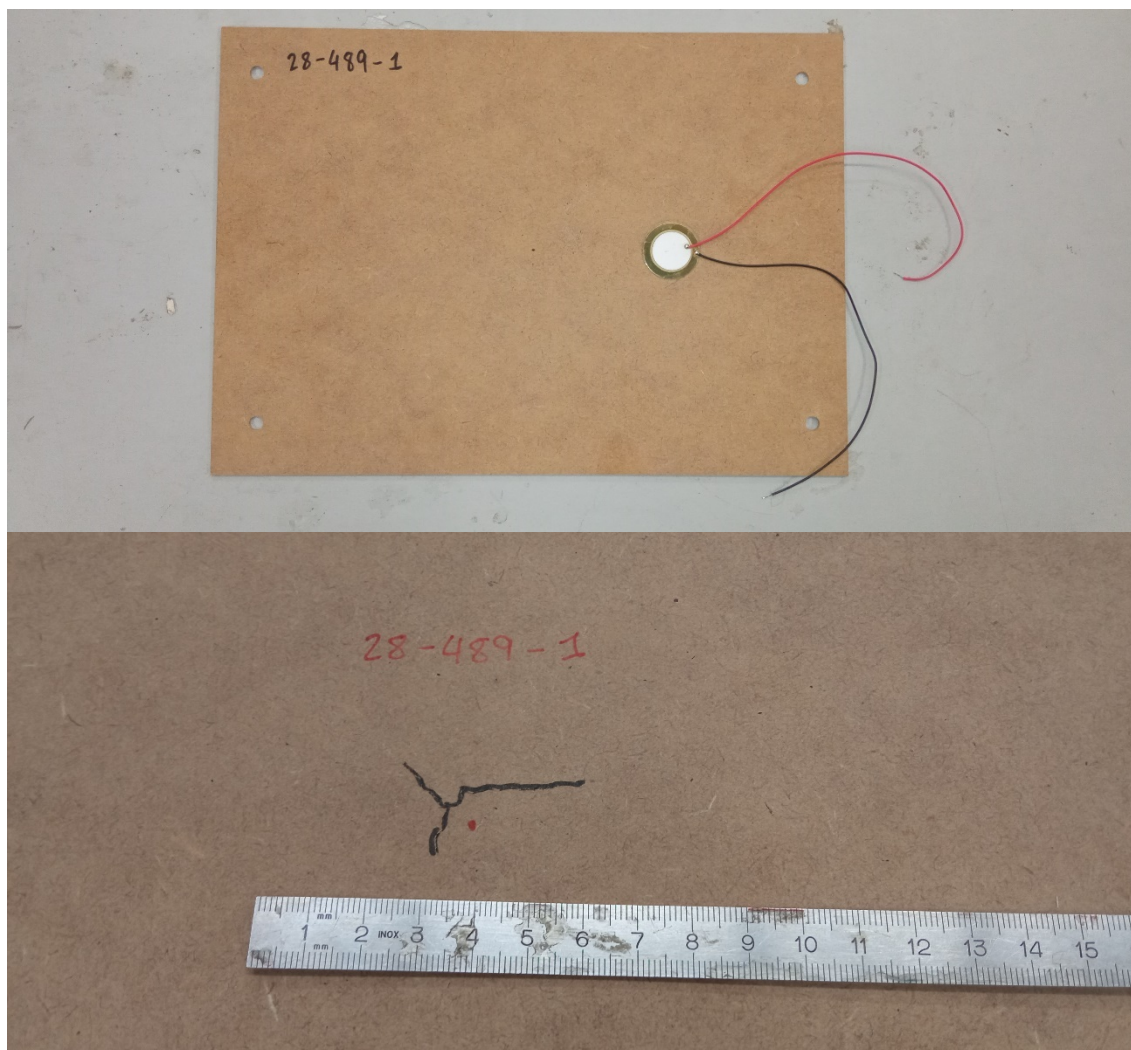
ASSAIG 23-799-1



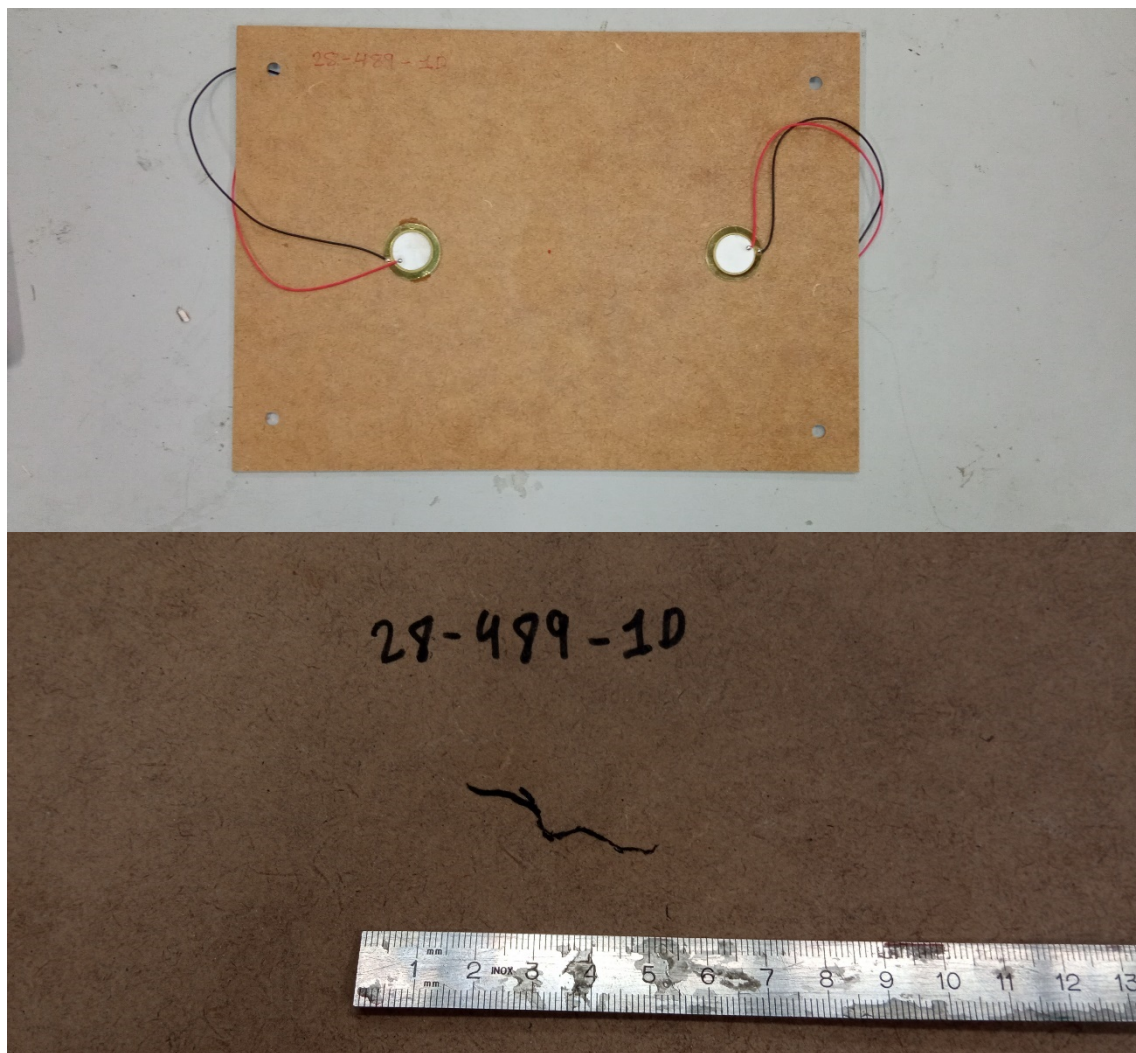
ASSAIG 23-799-1



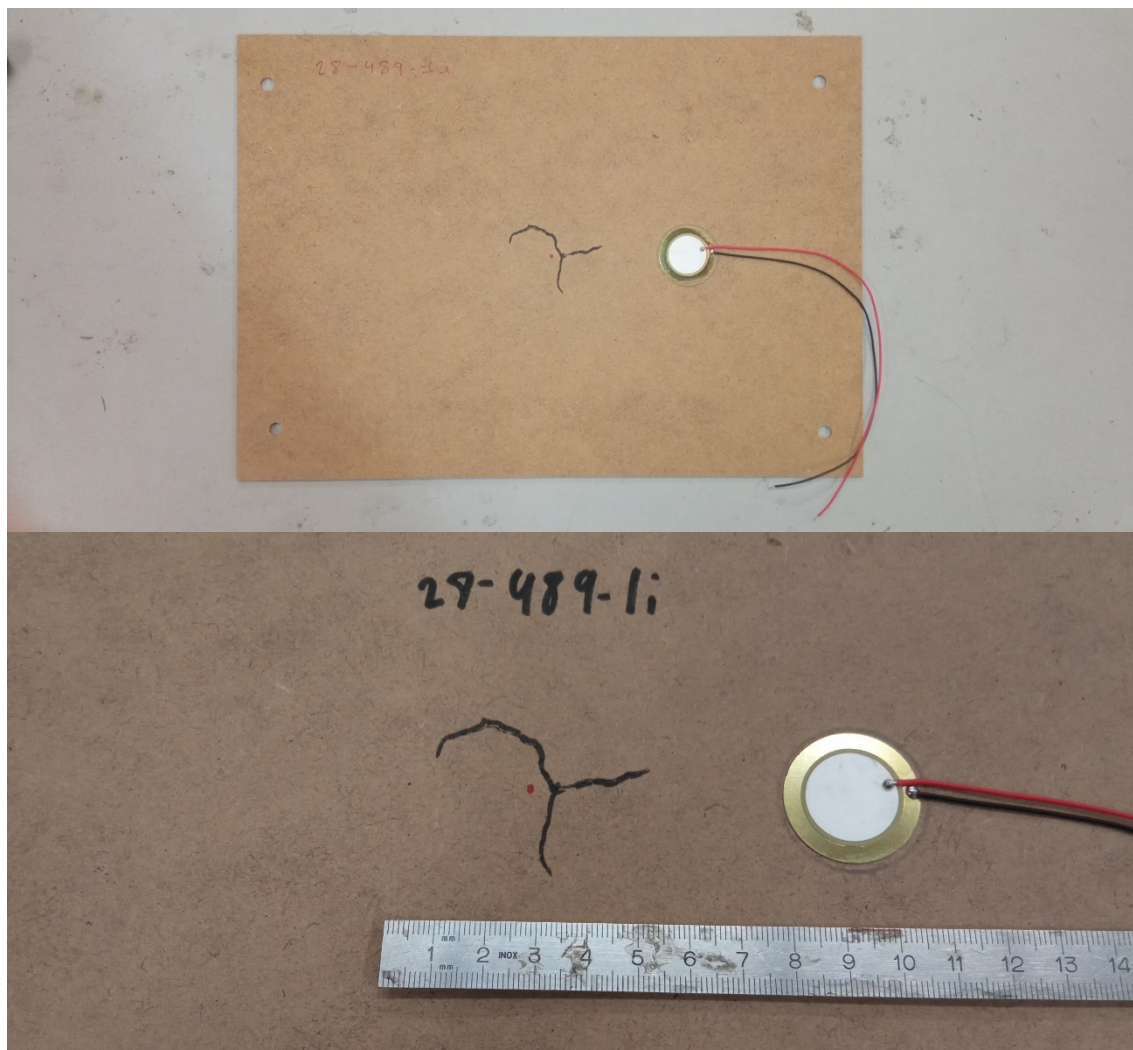
ASSAIG 28-489-1



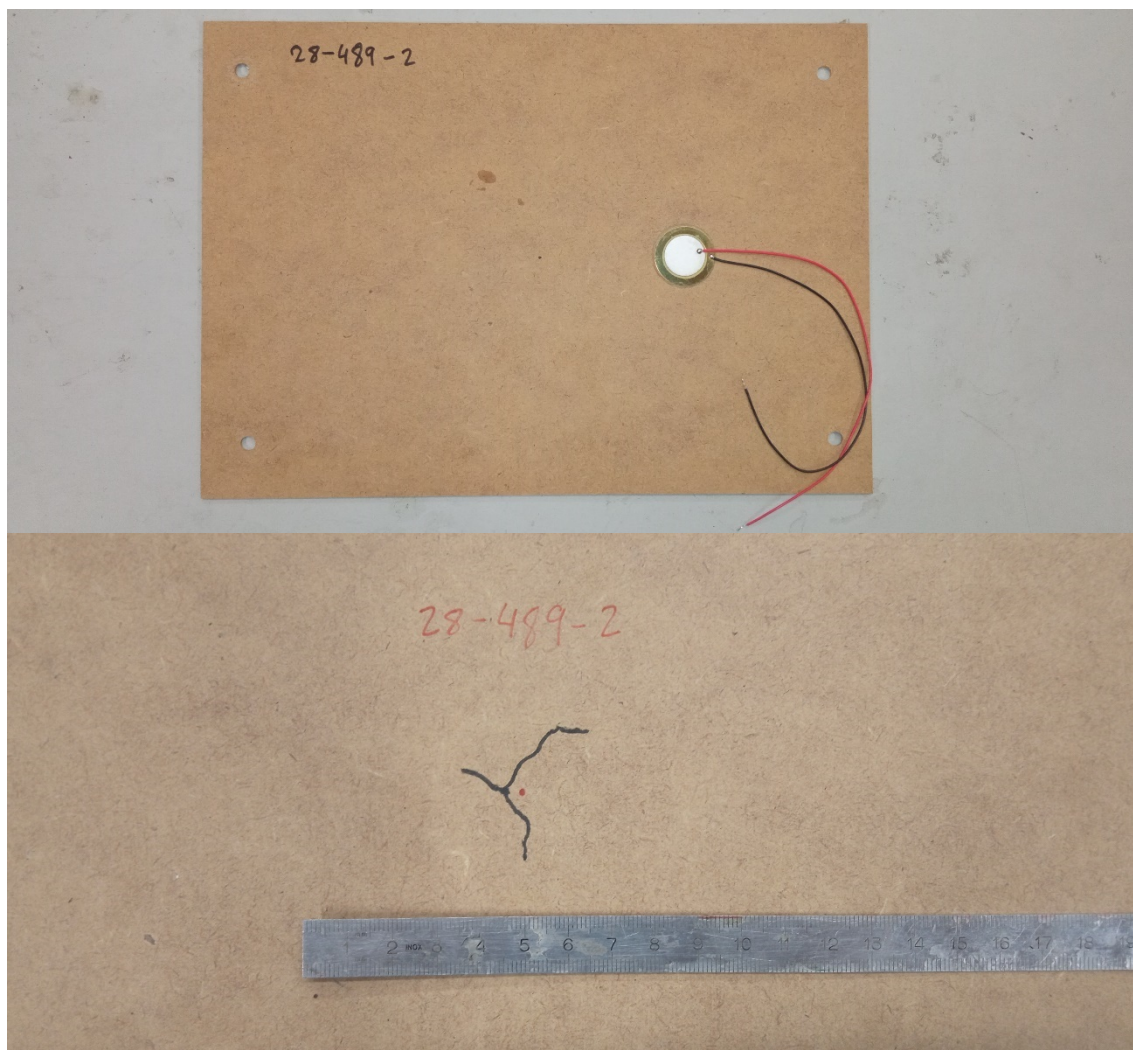
ASSAIG 28-489-1D



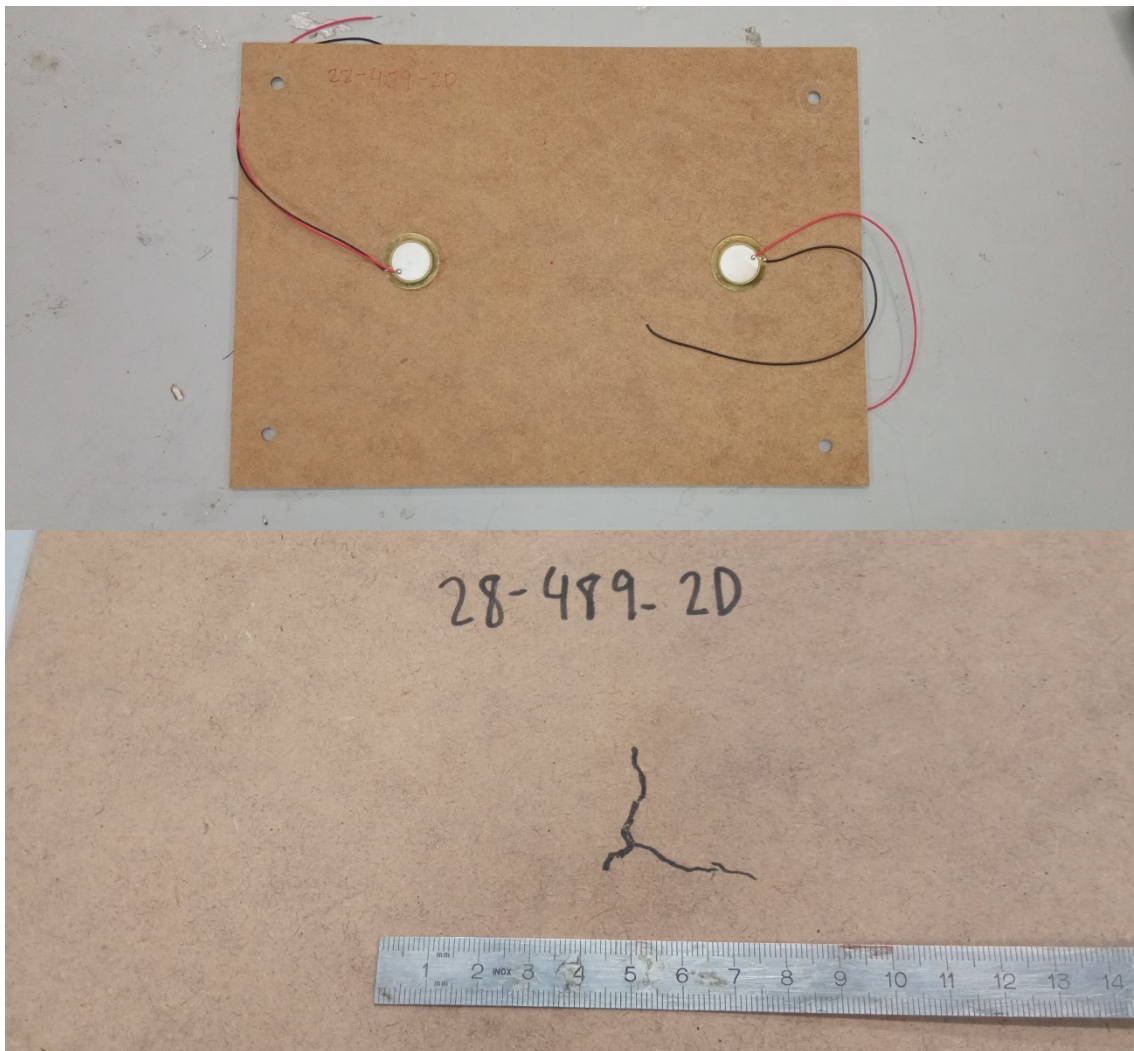
ASSAIG 28-489-1i



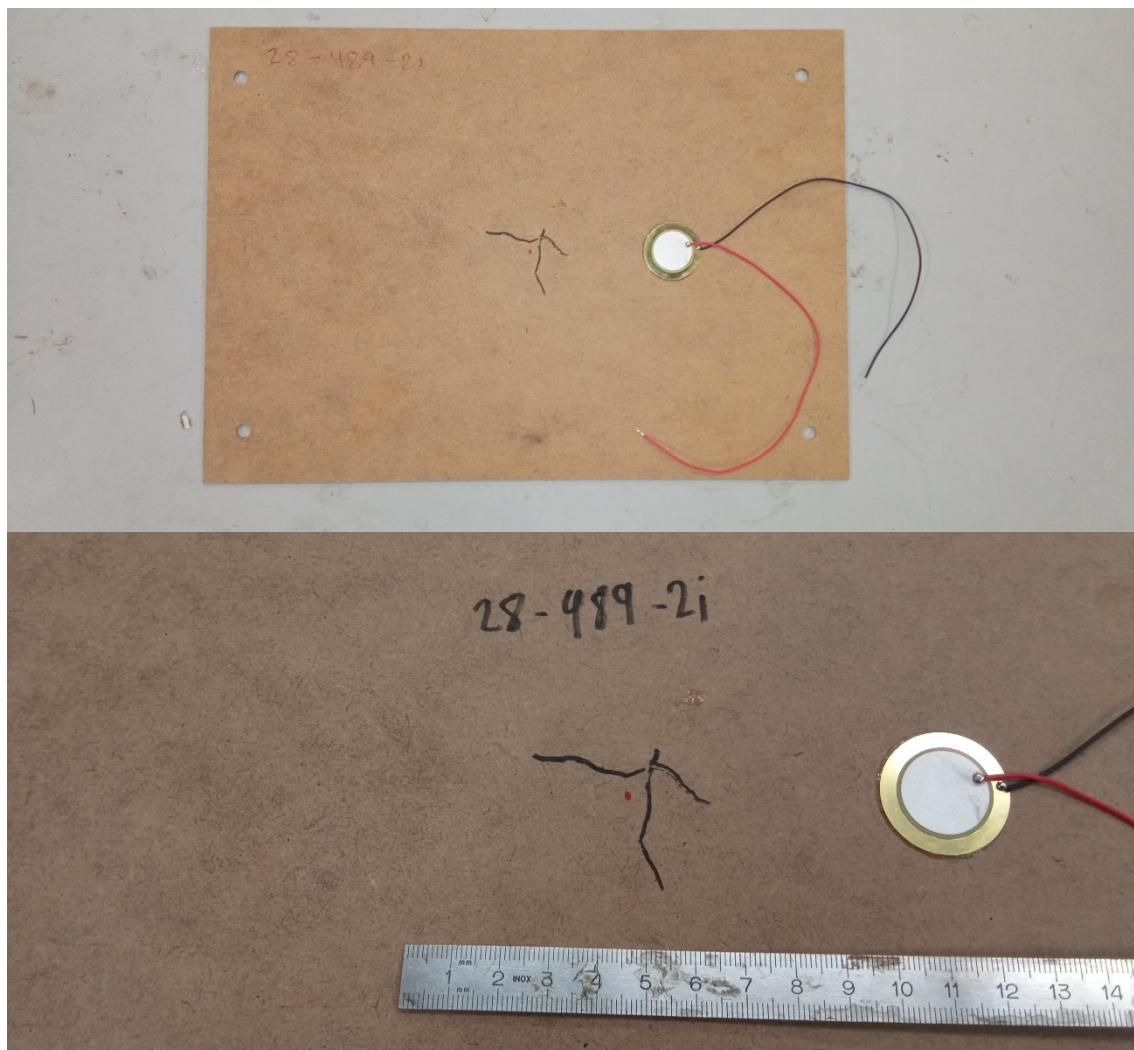
ASSAIG 28-489-2



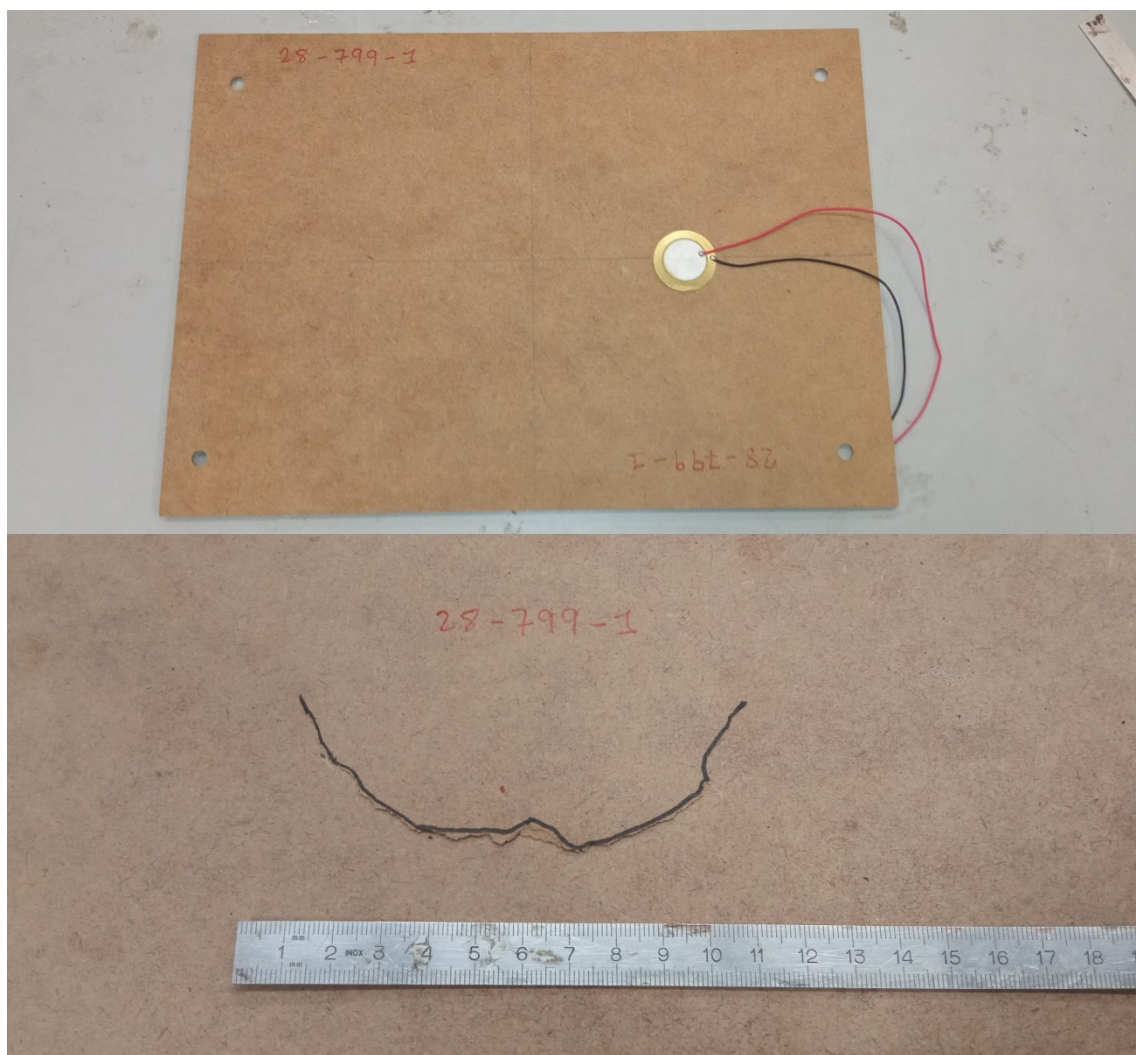
ASSAIG 28-489-2D



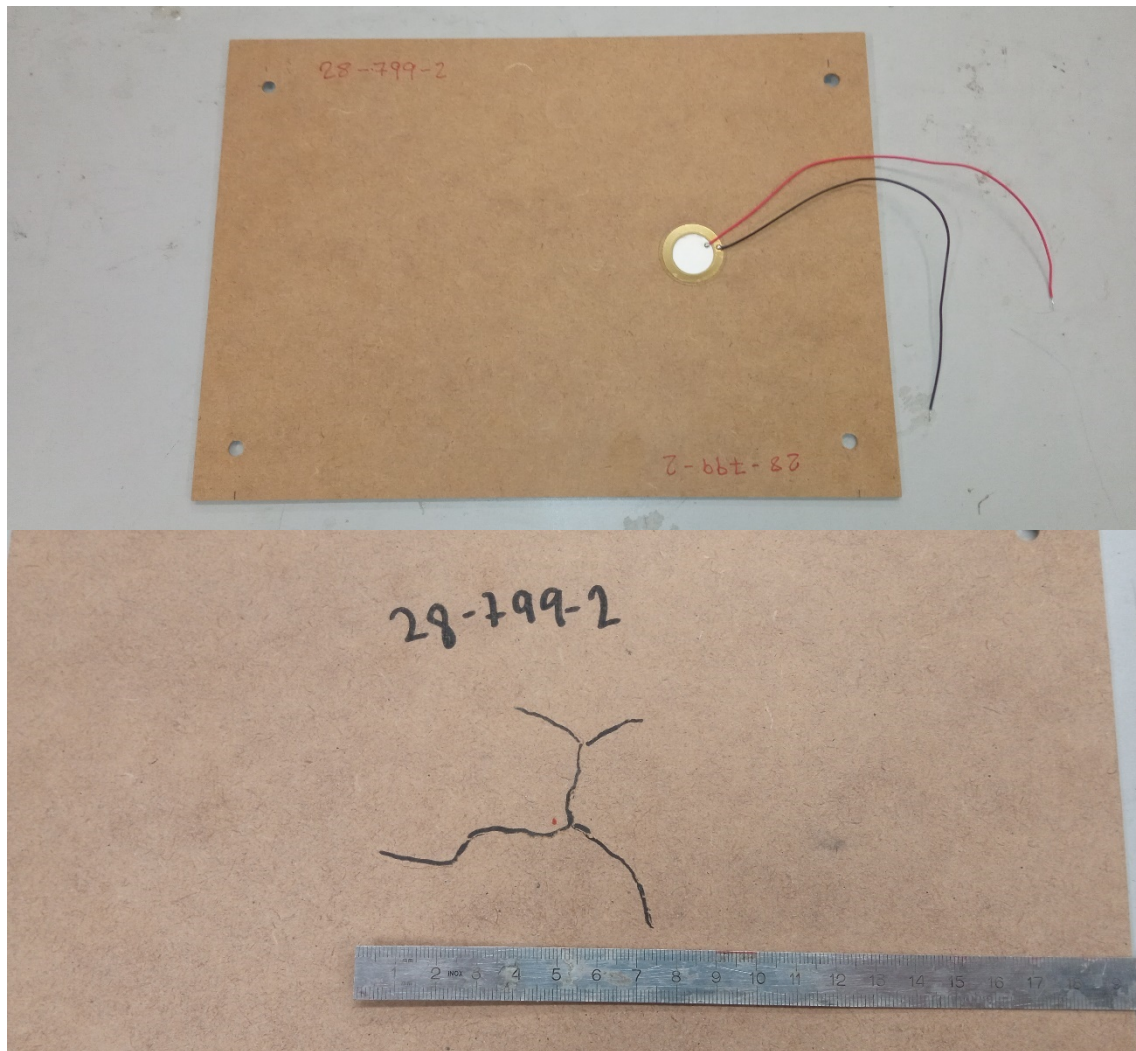
ASSAIG 28-489-2i



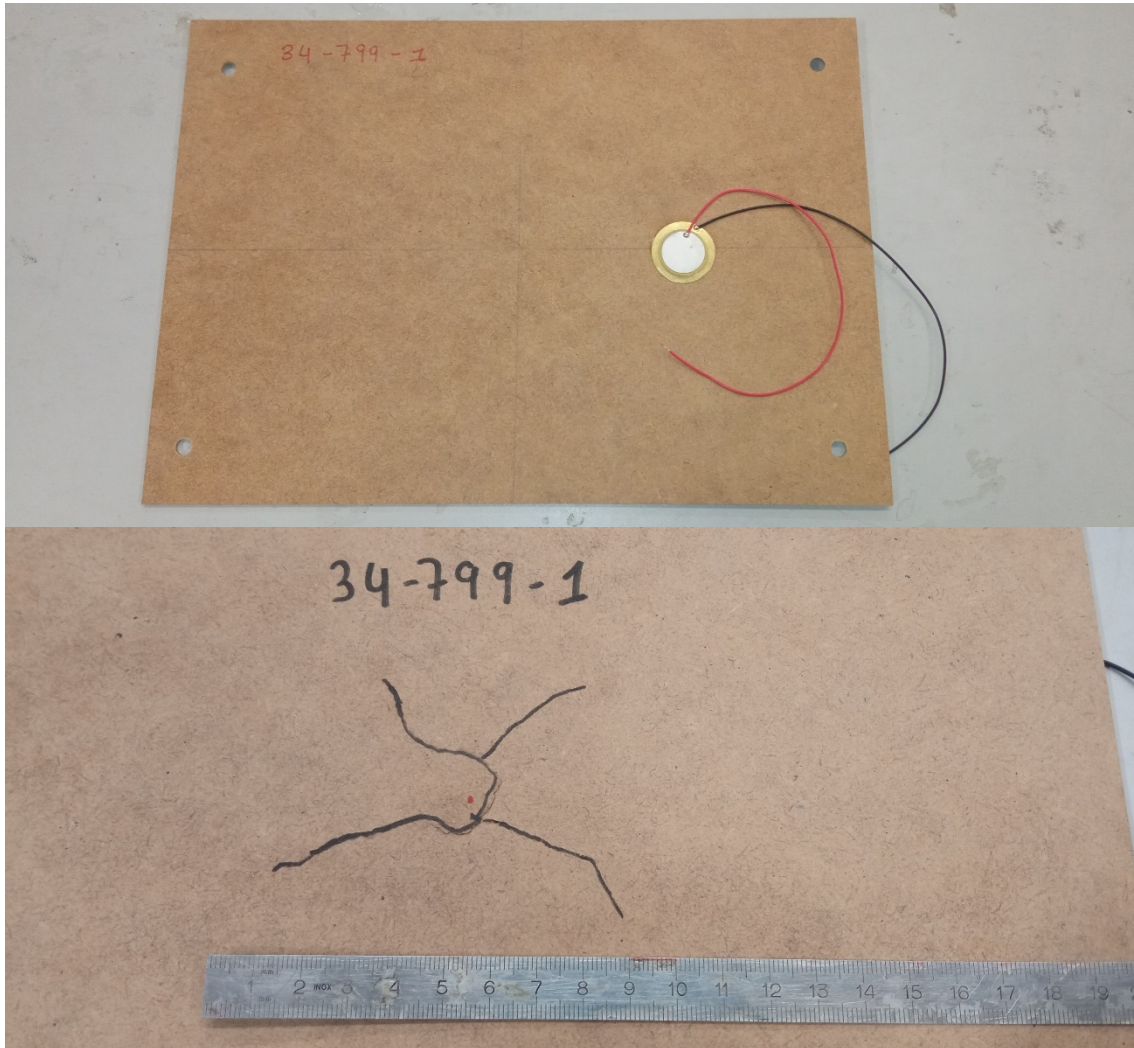
ASSAIG 28-799-1



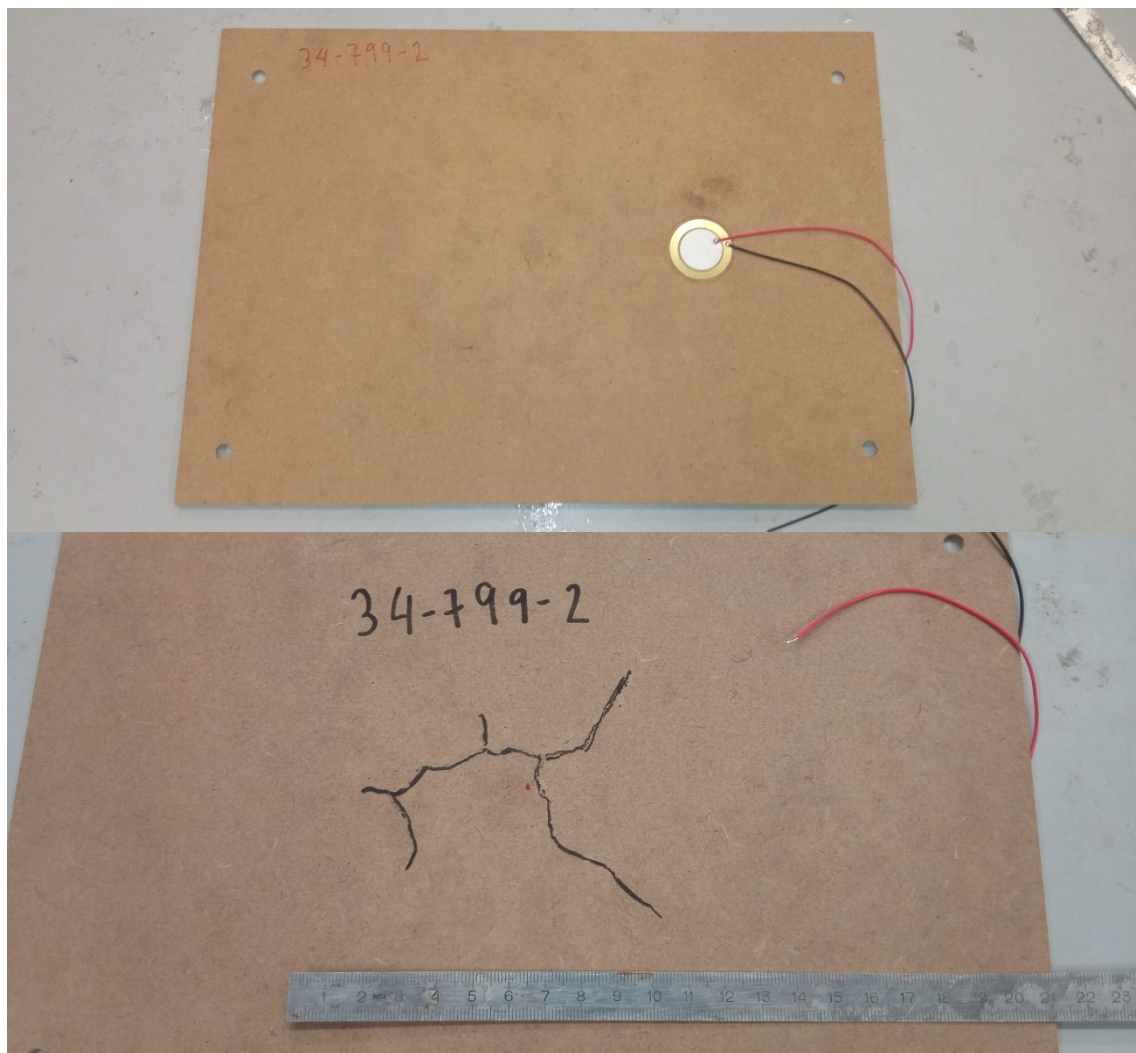
ASSAIG 28-799-2



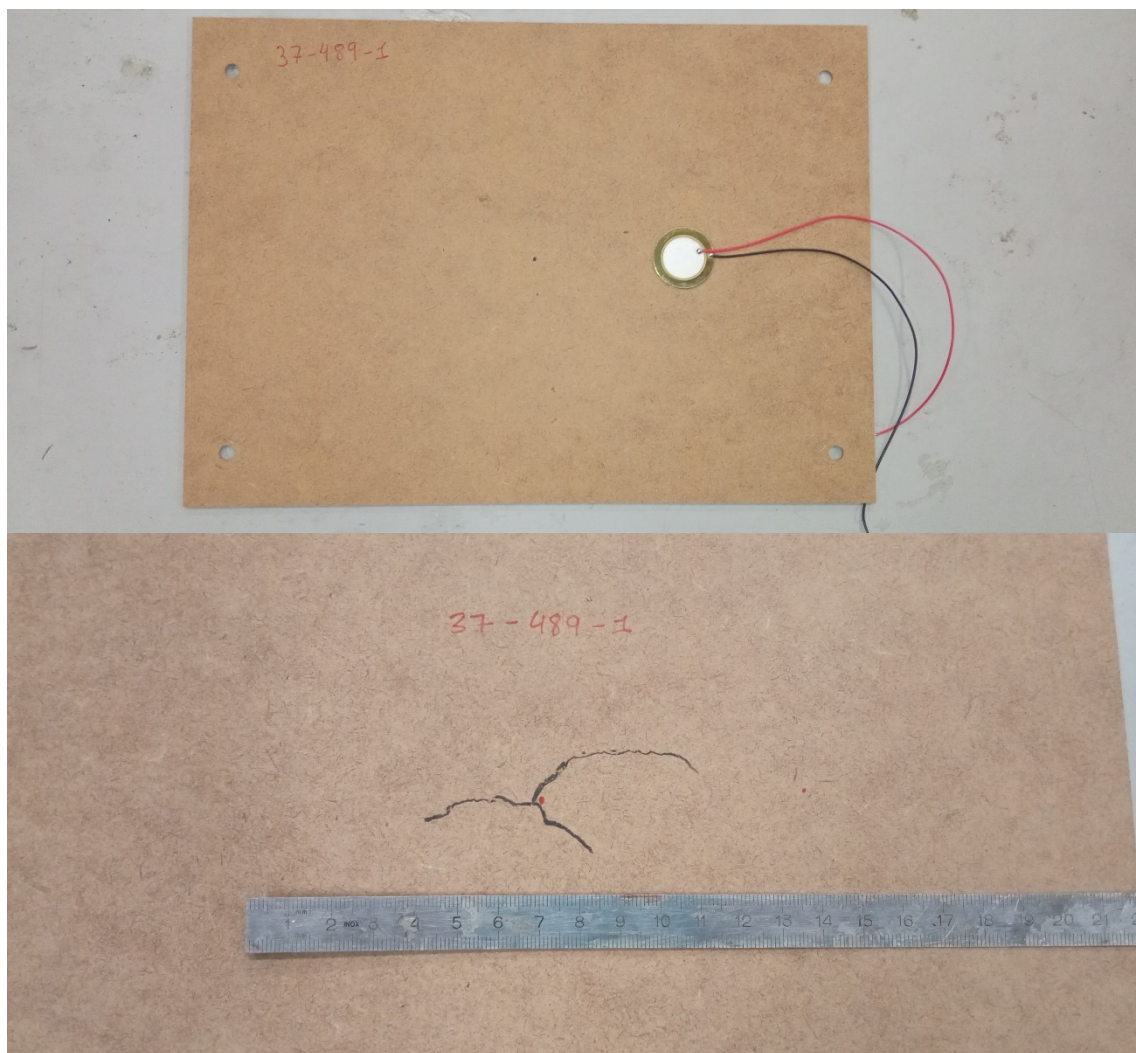
ASSAIG 34-799-1



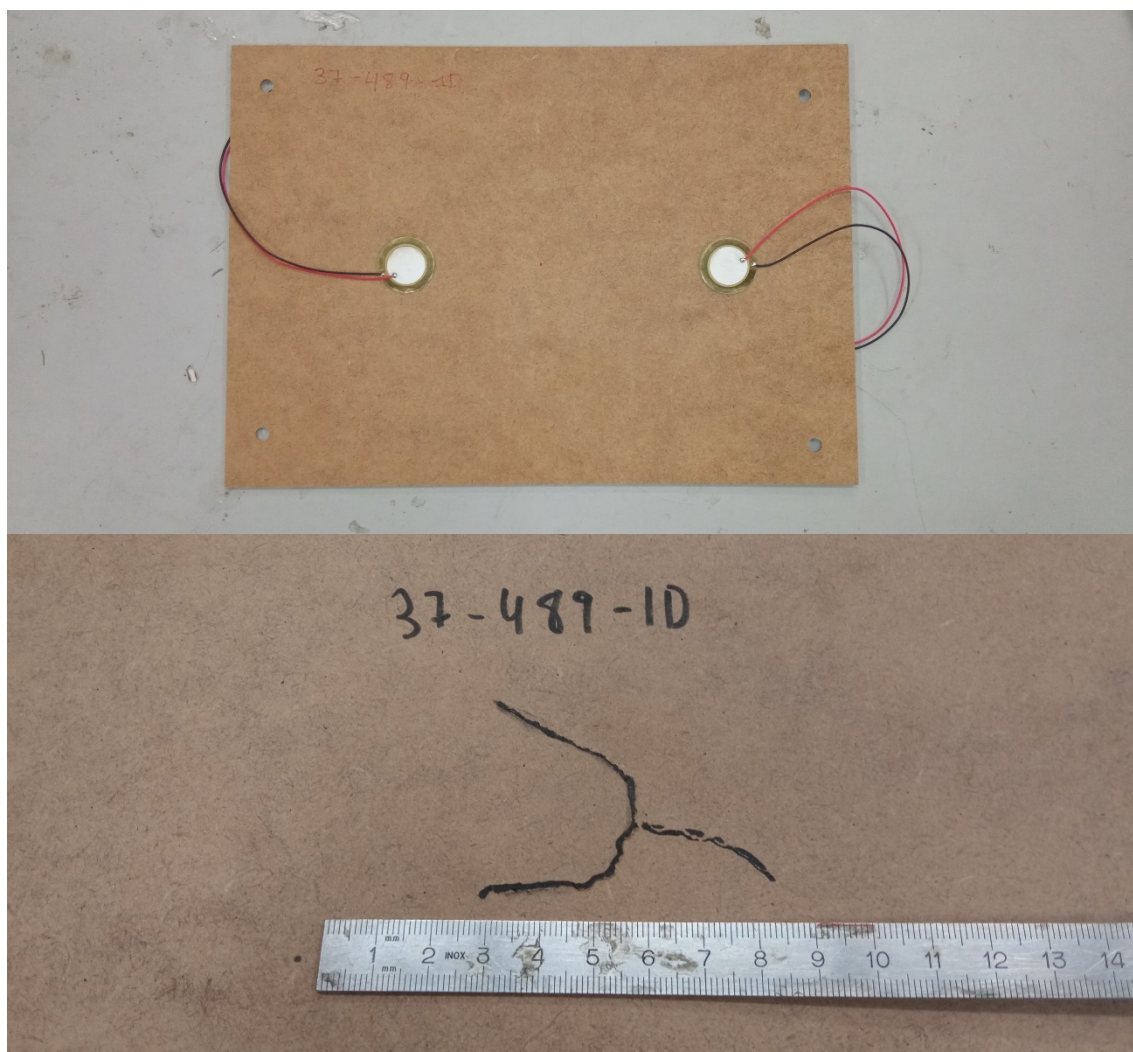
ASSAIG 34-799-2



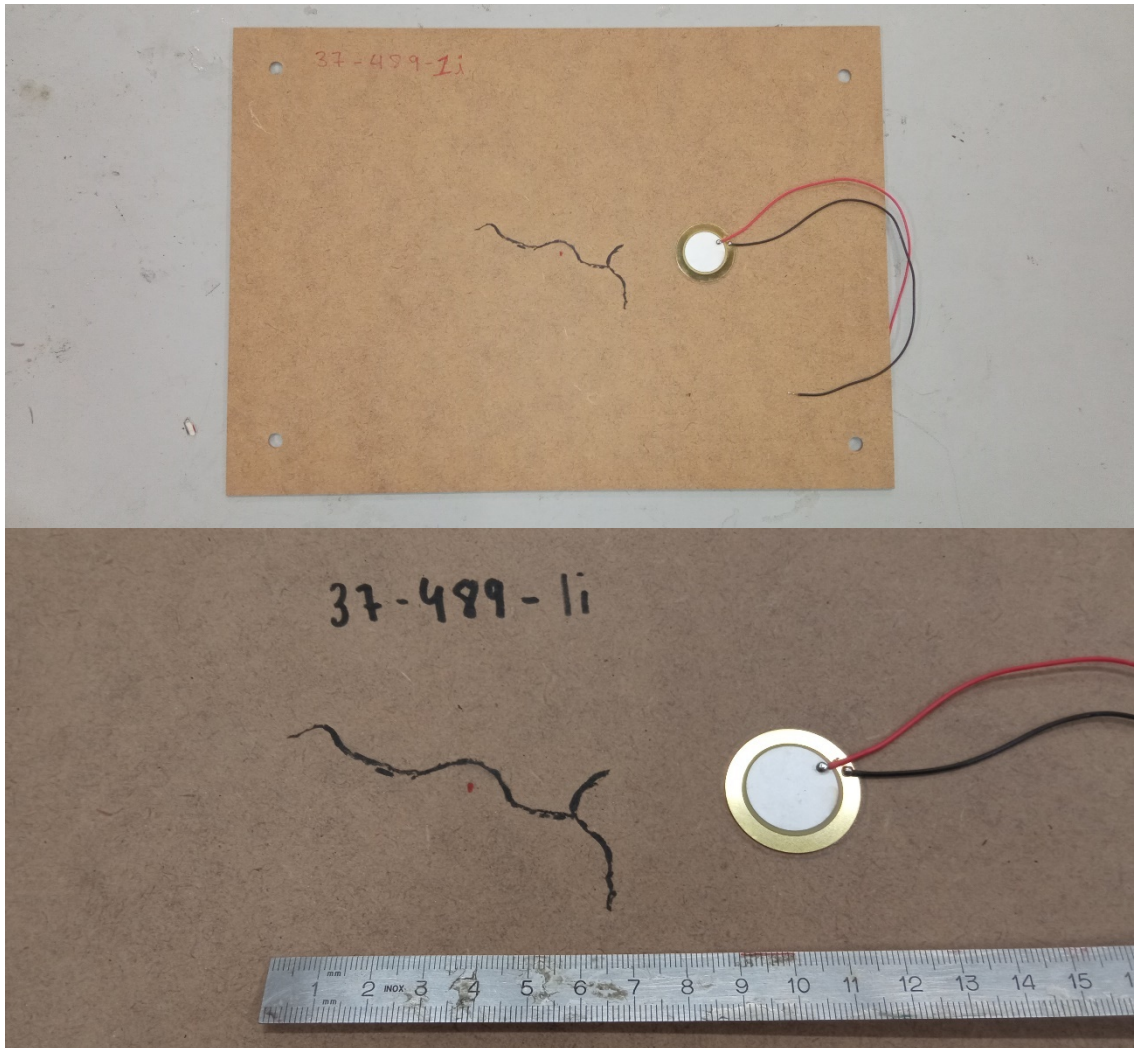
ASSAIG 37-489-1



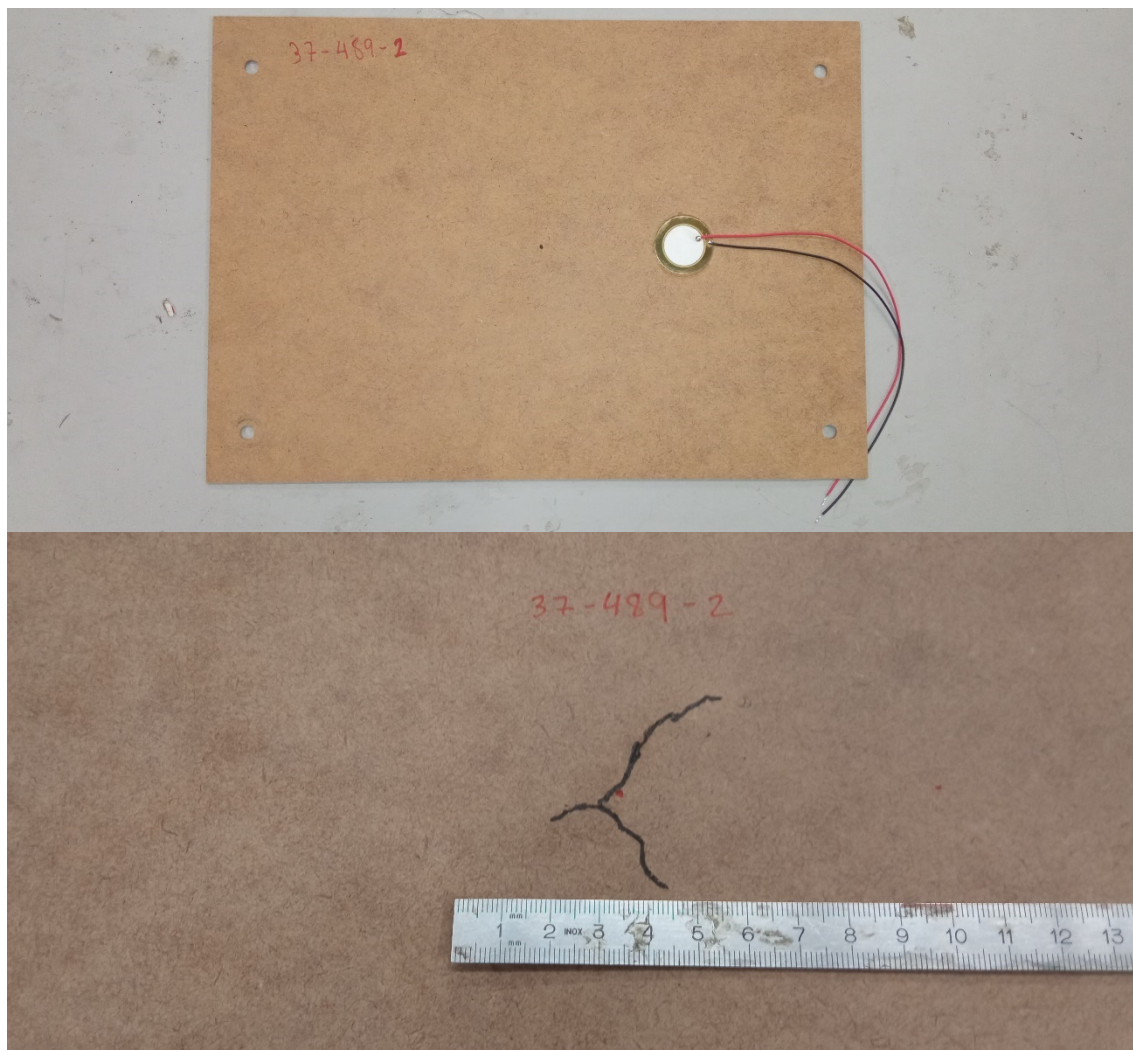
ASSAIG 37-489-1D



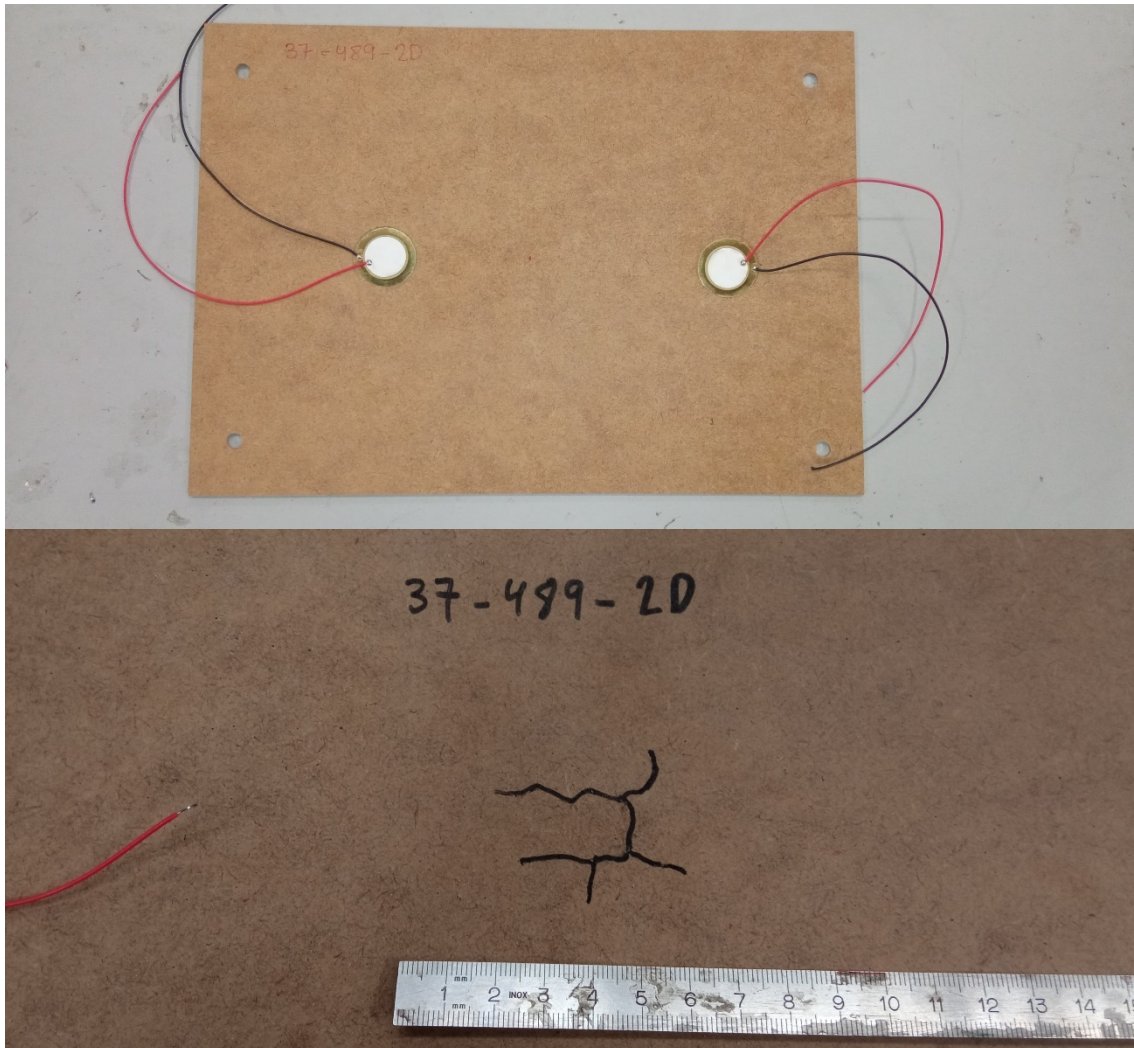
ASSAIG 37-489-1i



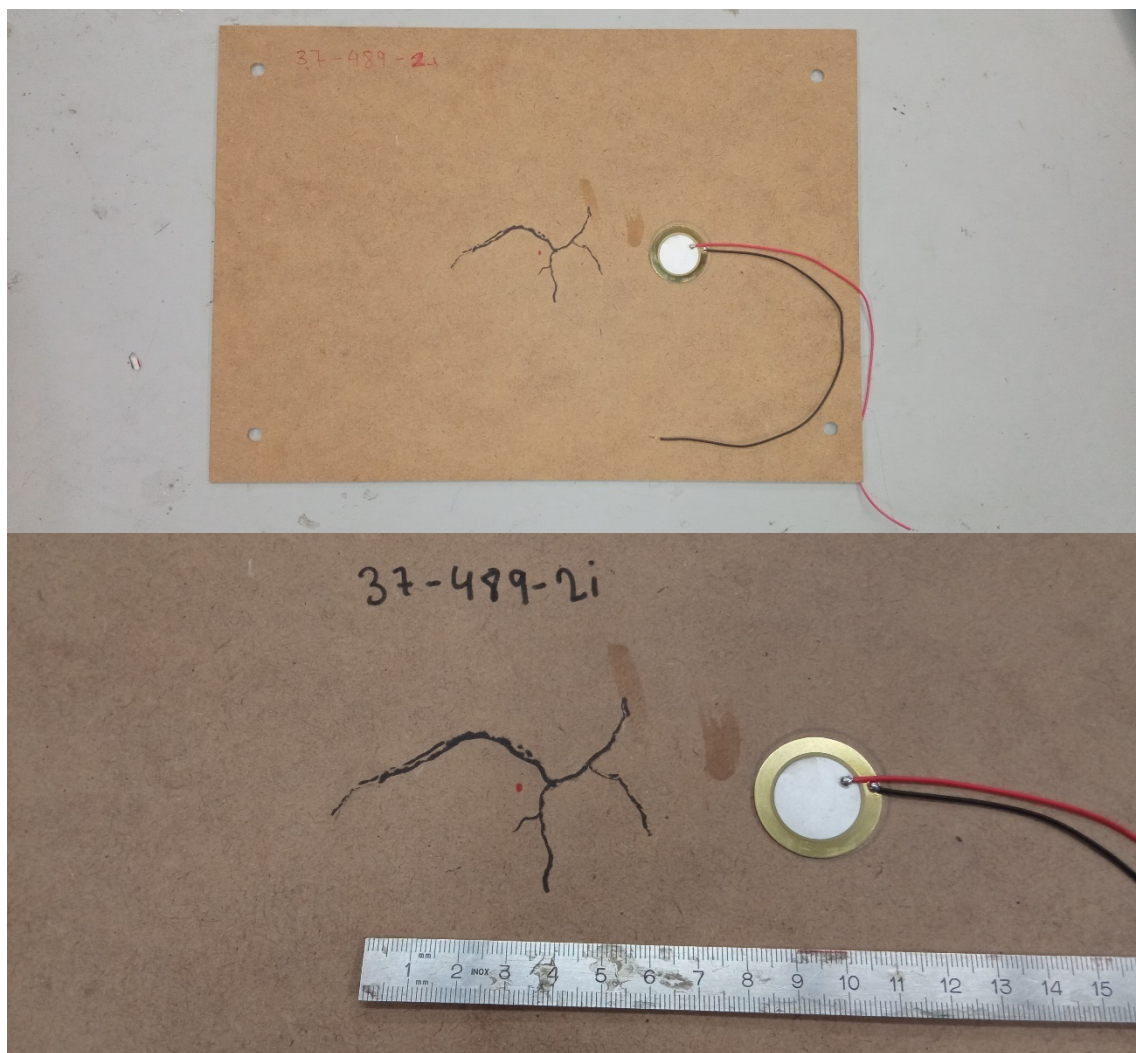
ASSAIG 37-489-2



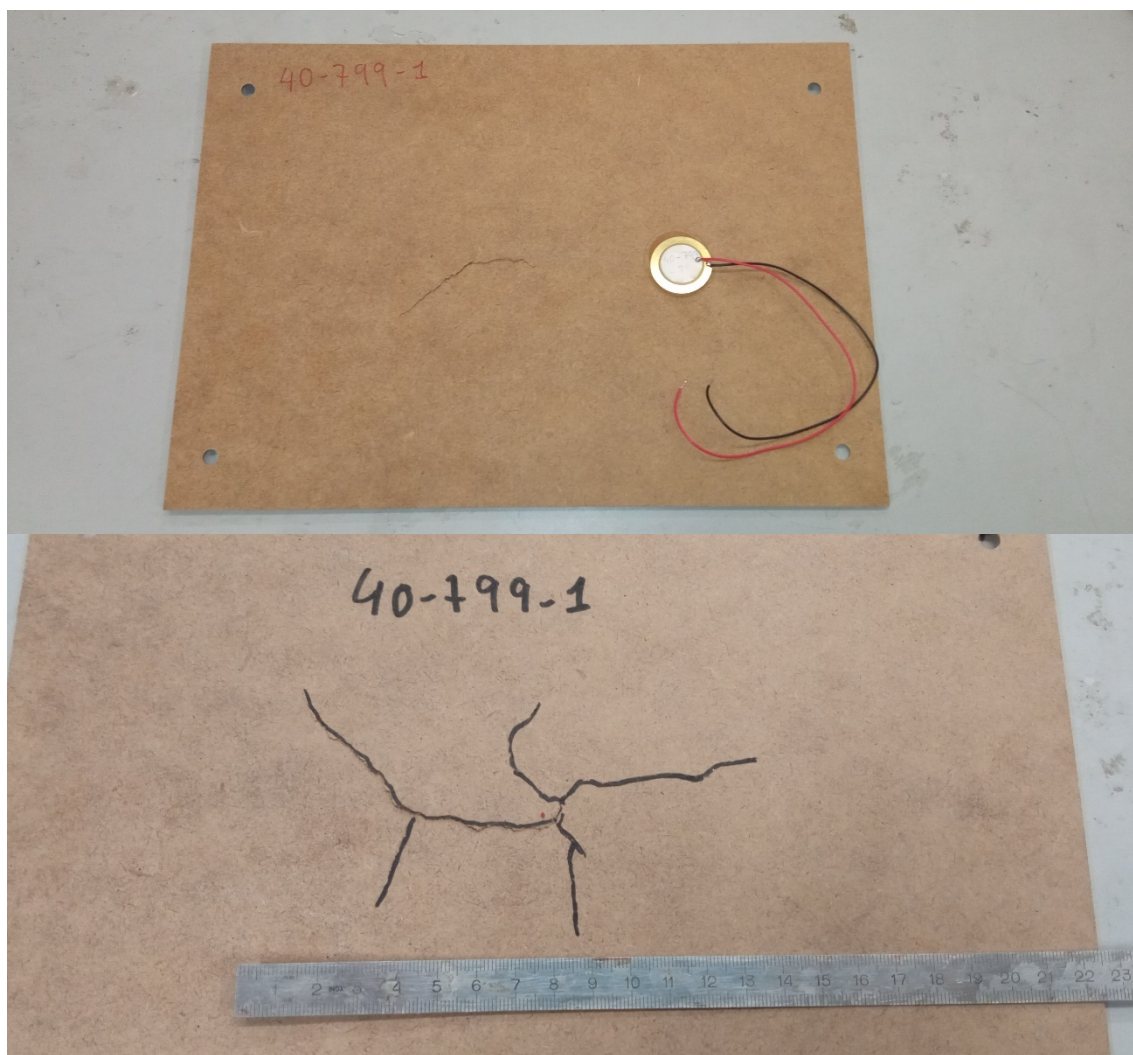
ASSAIG 37-489-2D



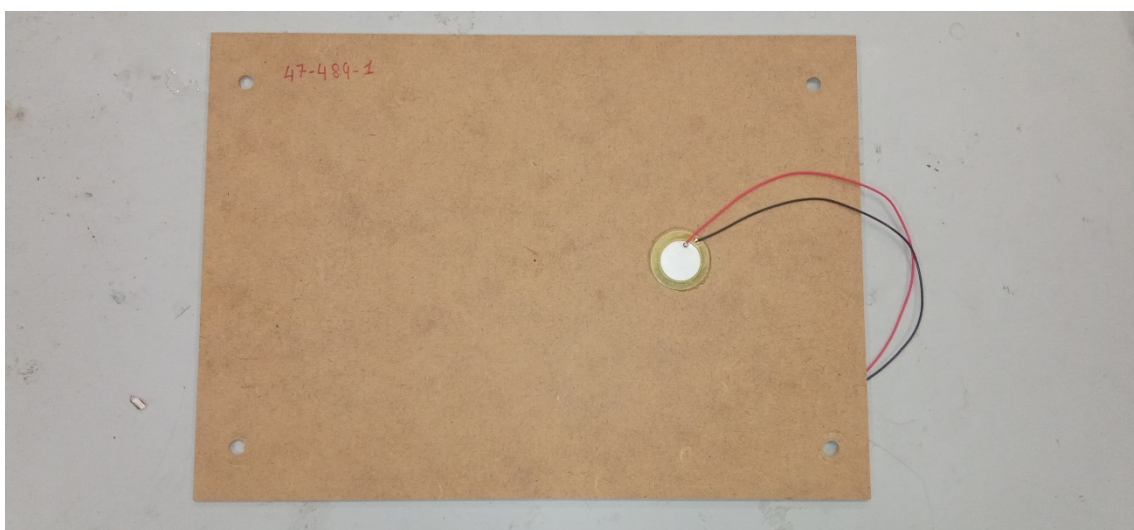
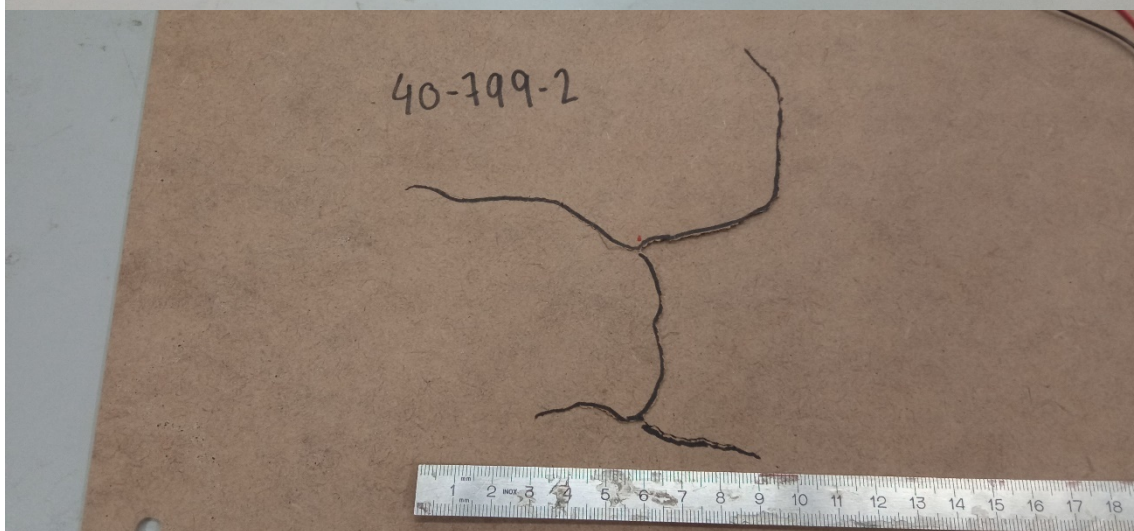
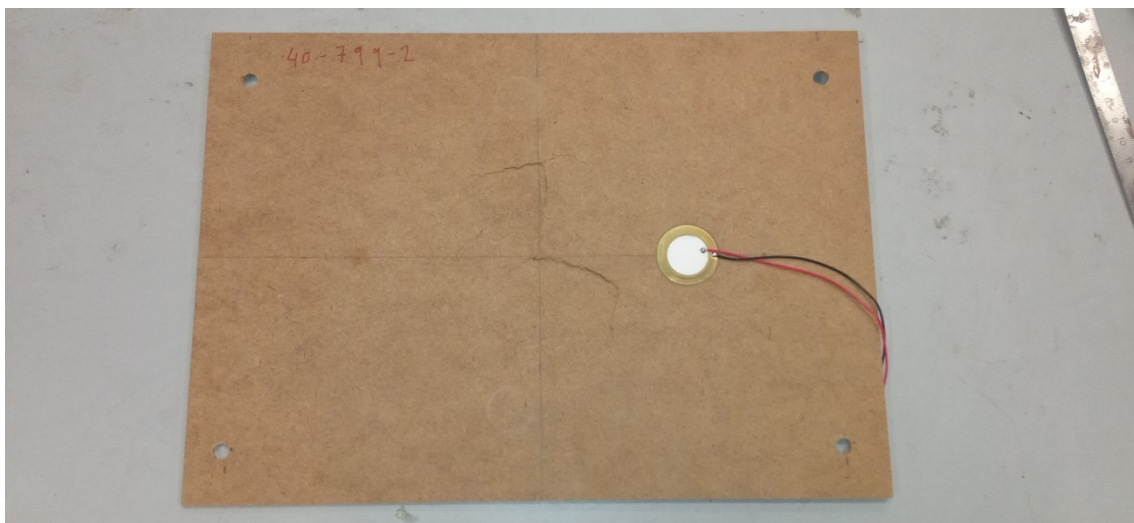
ASSAIG 37-489-2i

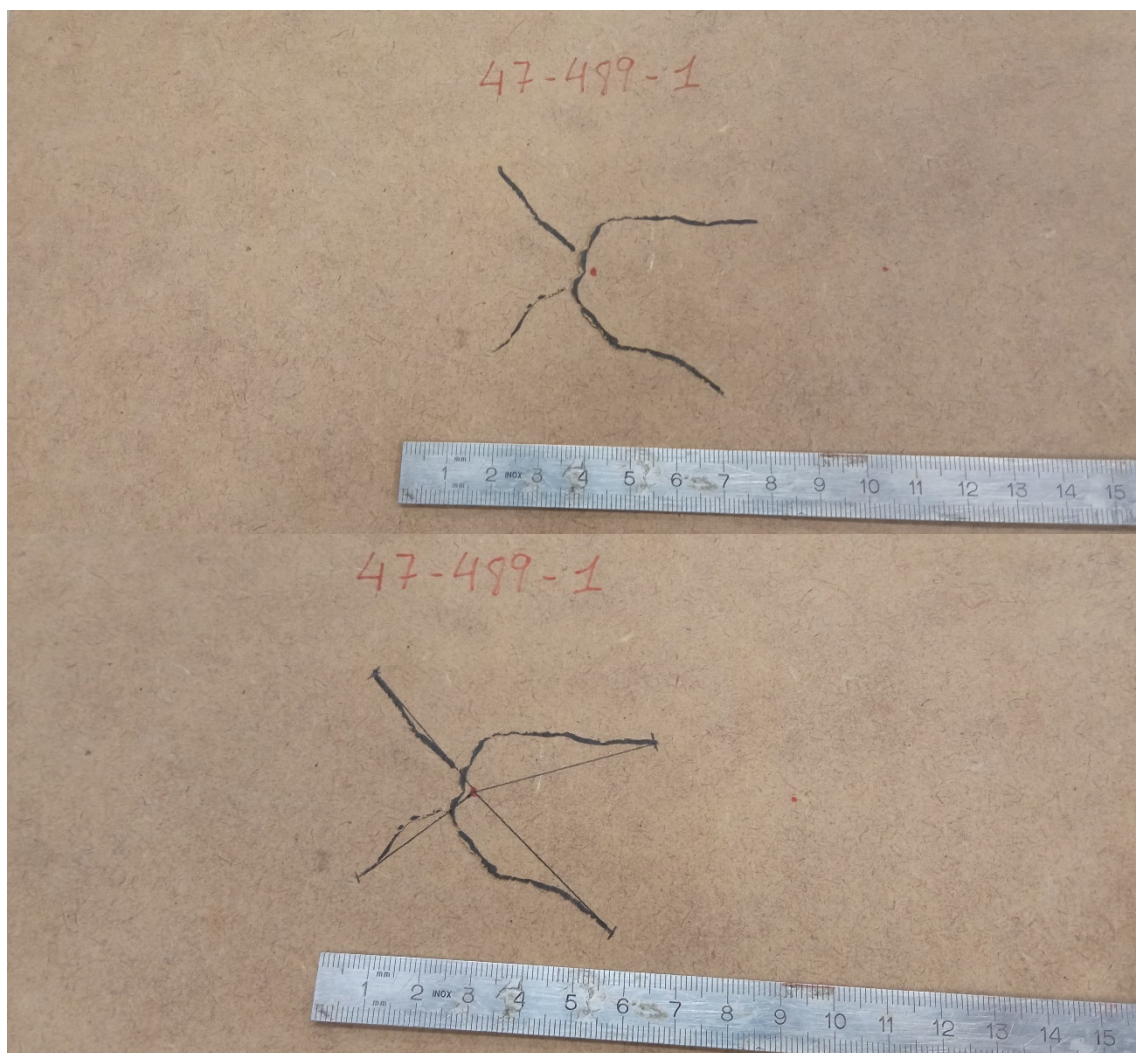


ASSAIG 40-799-1

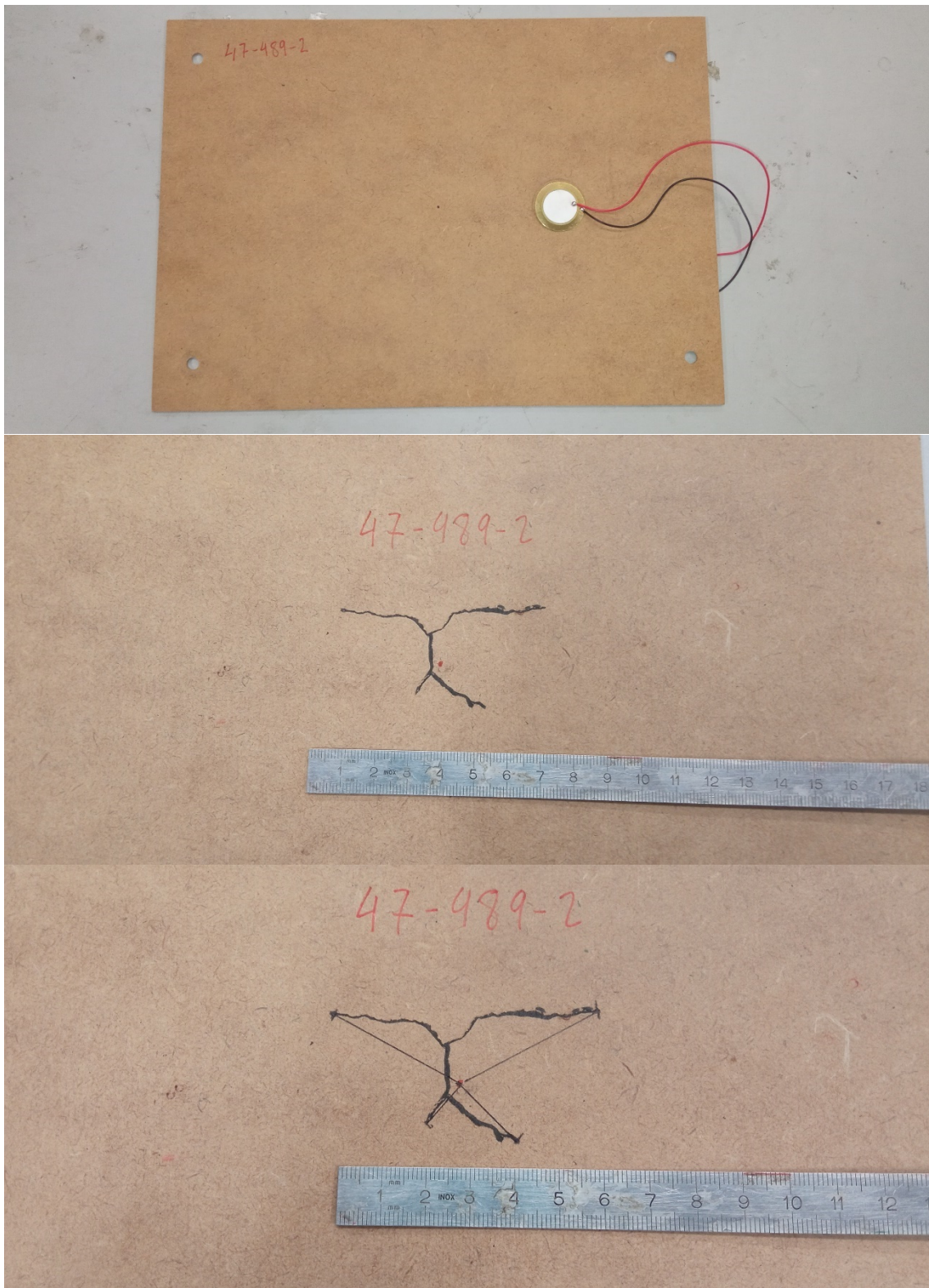


ASSAIG 40-799-2

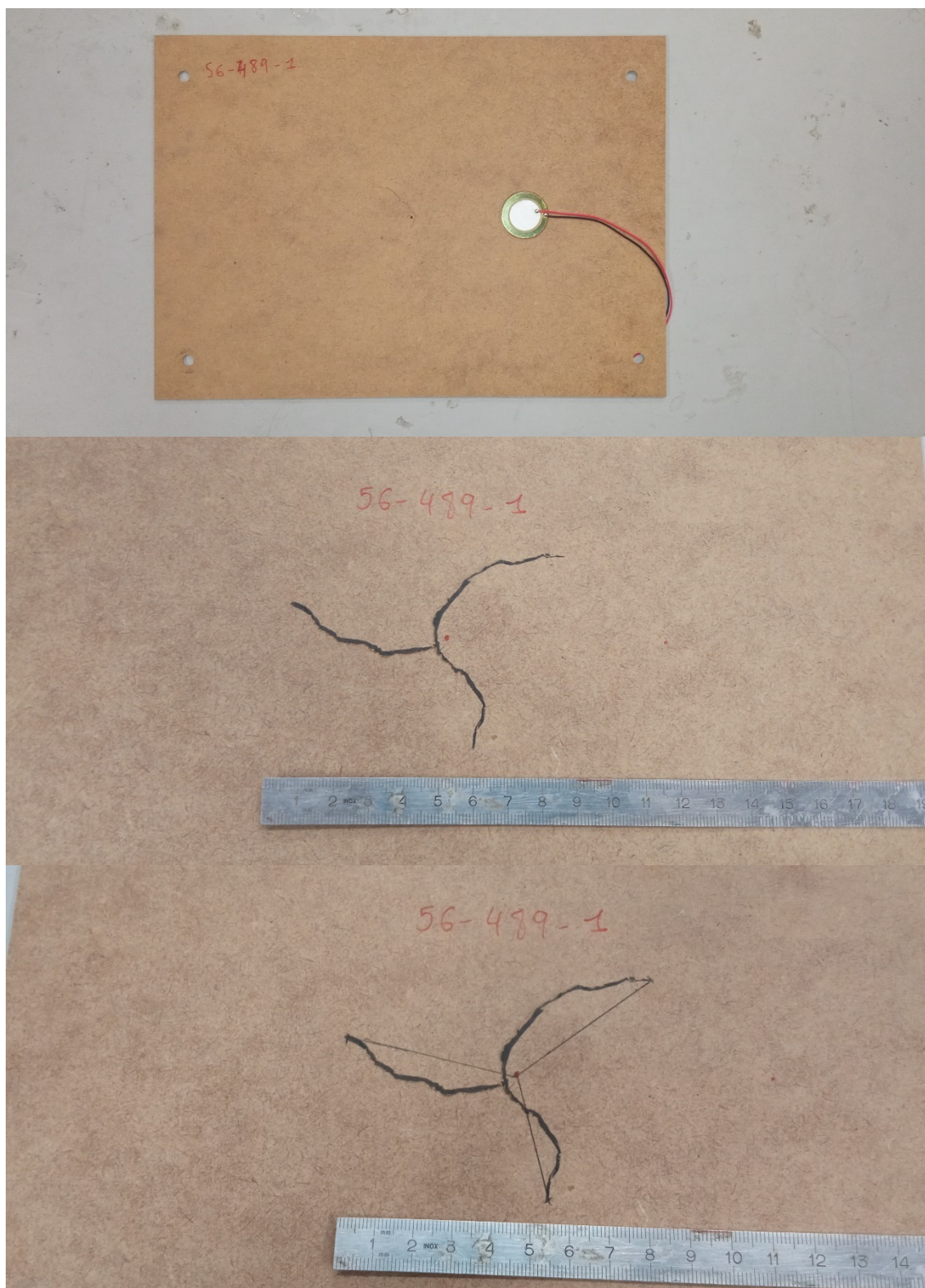




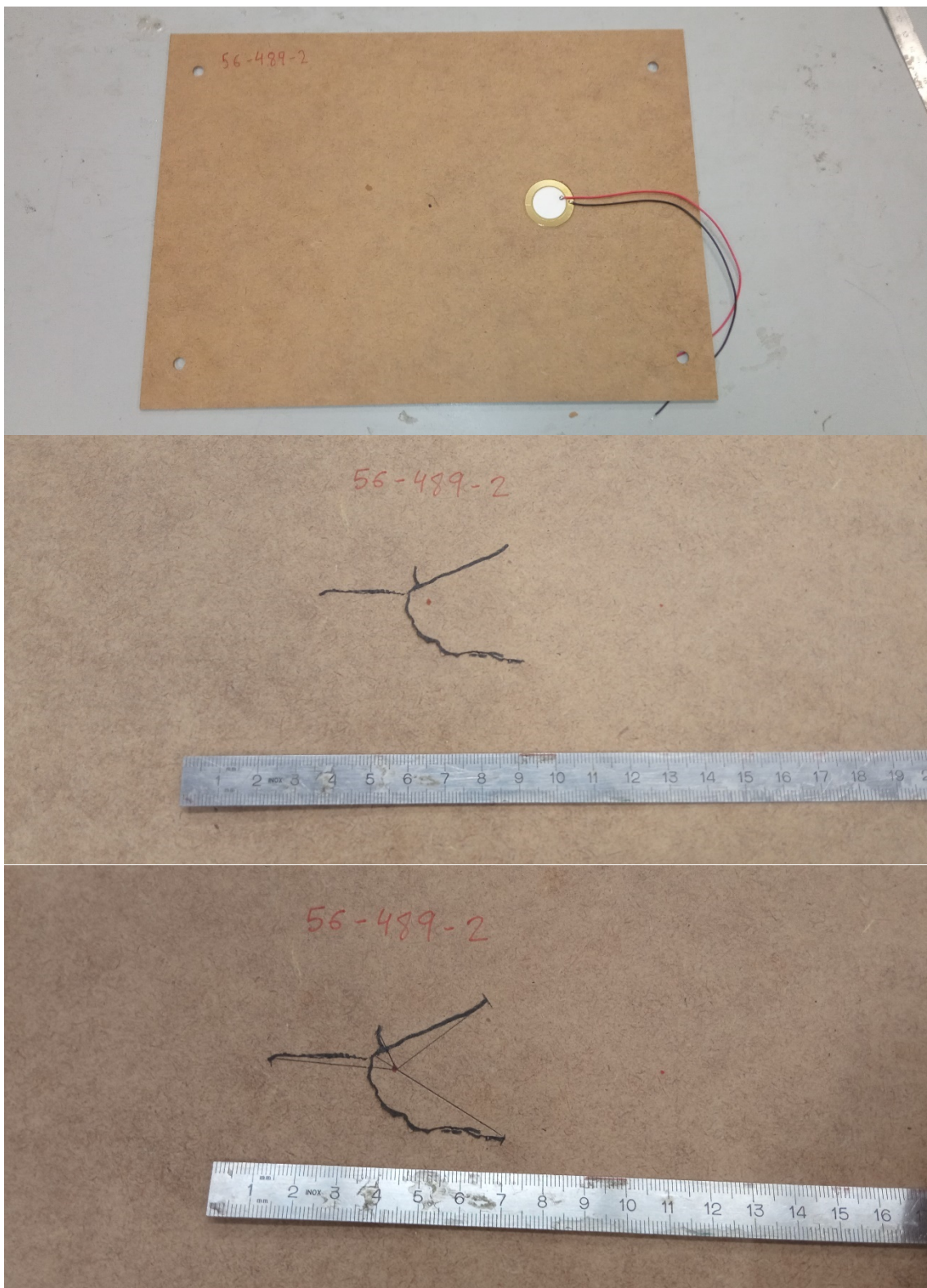
ASSAIG 47-489-2



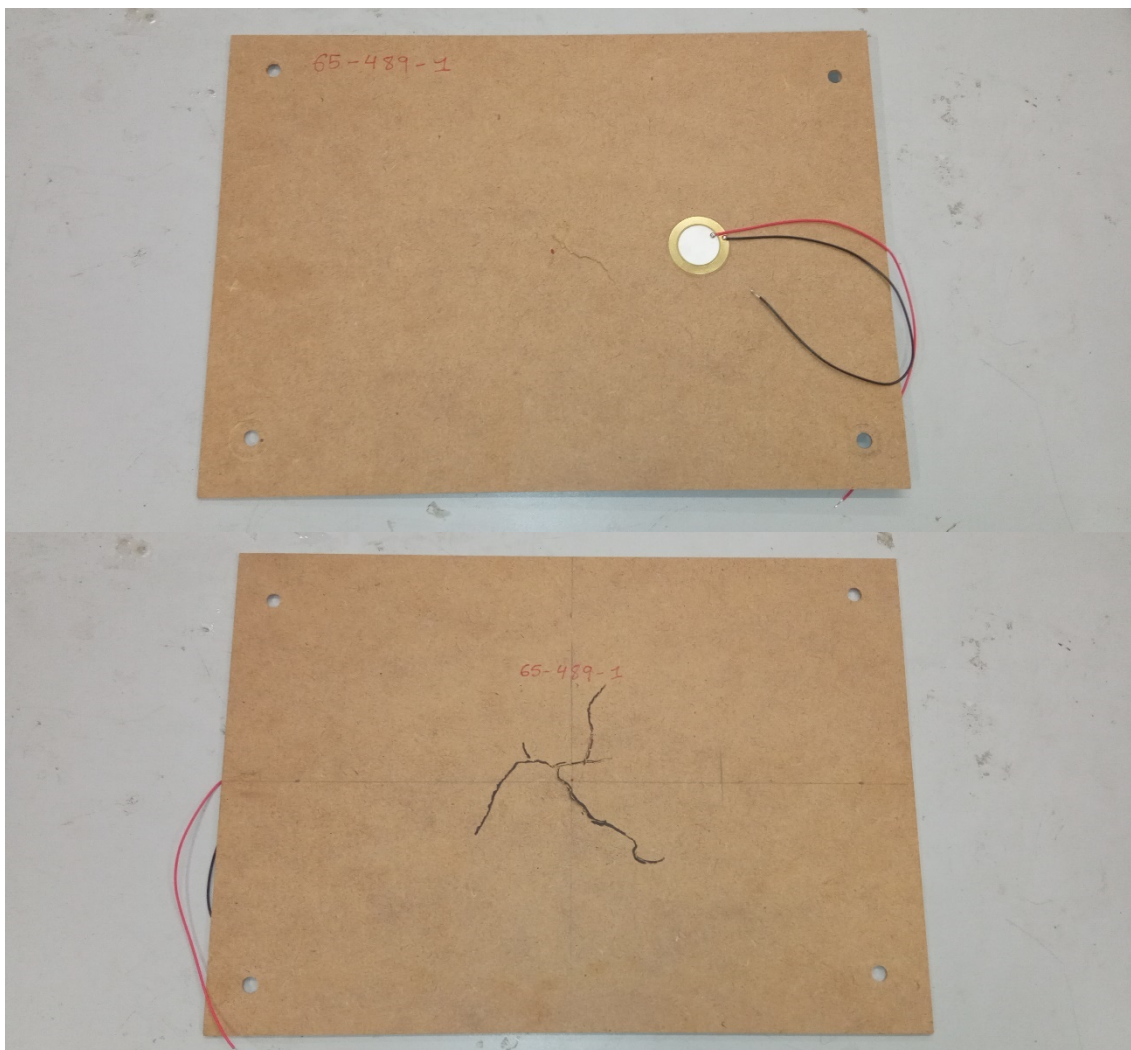
ASSAIG 56-489-1



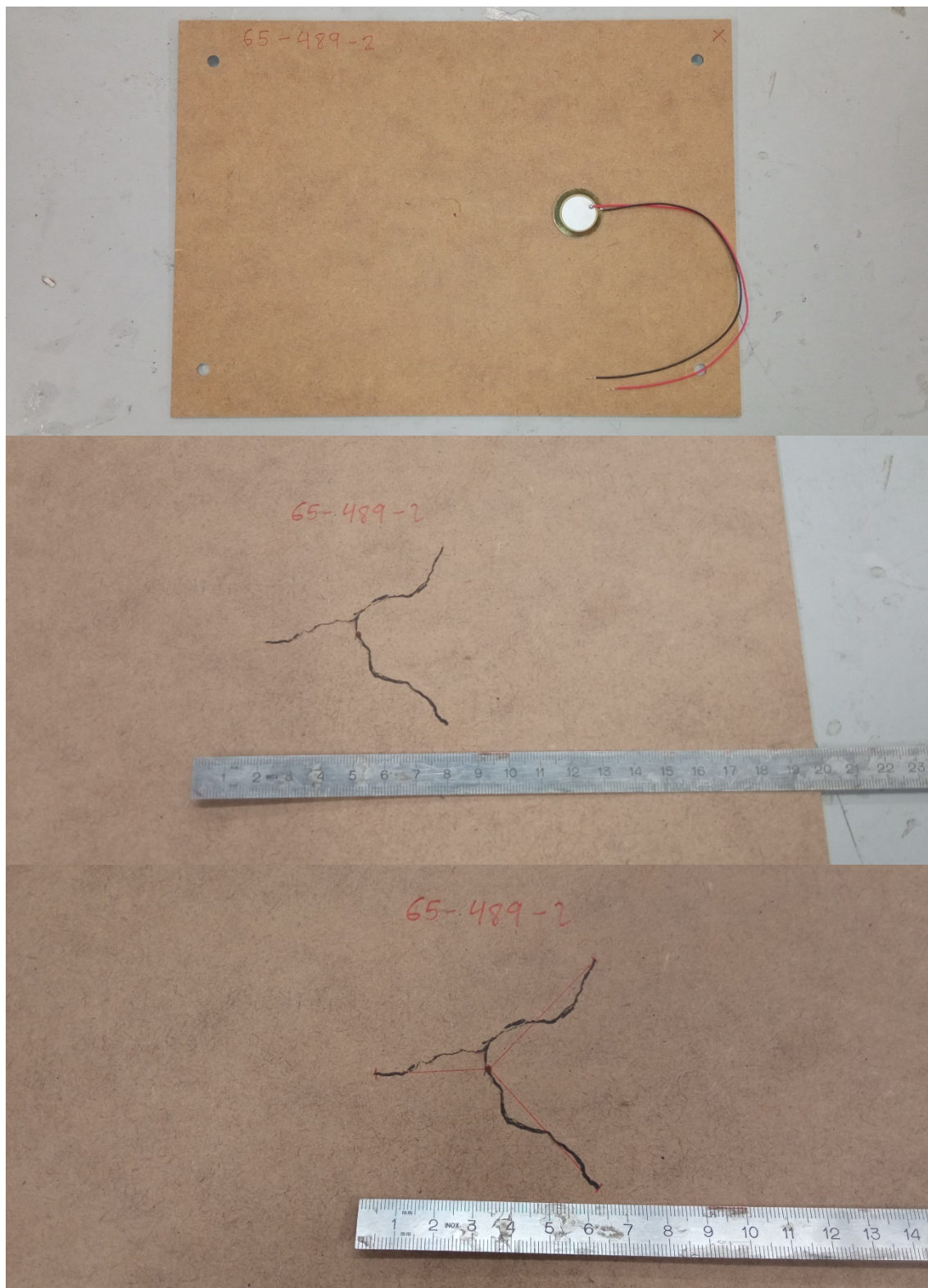
ASSAIG 56-489-2



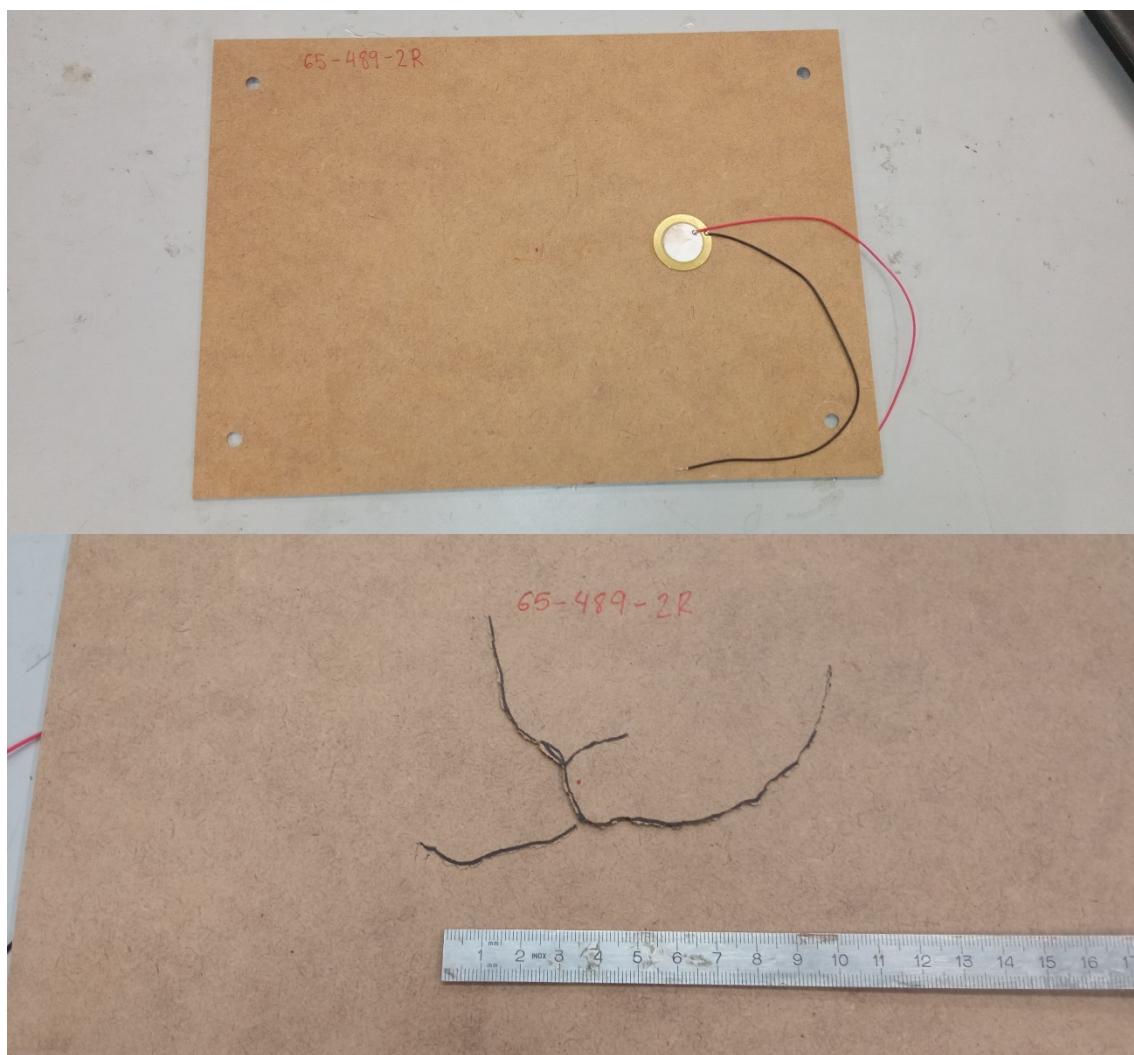
ASSAIG 65-489-1



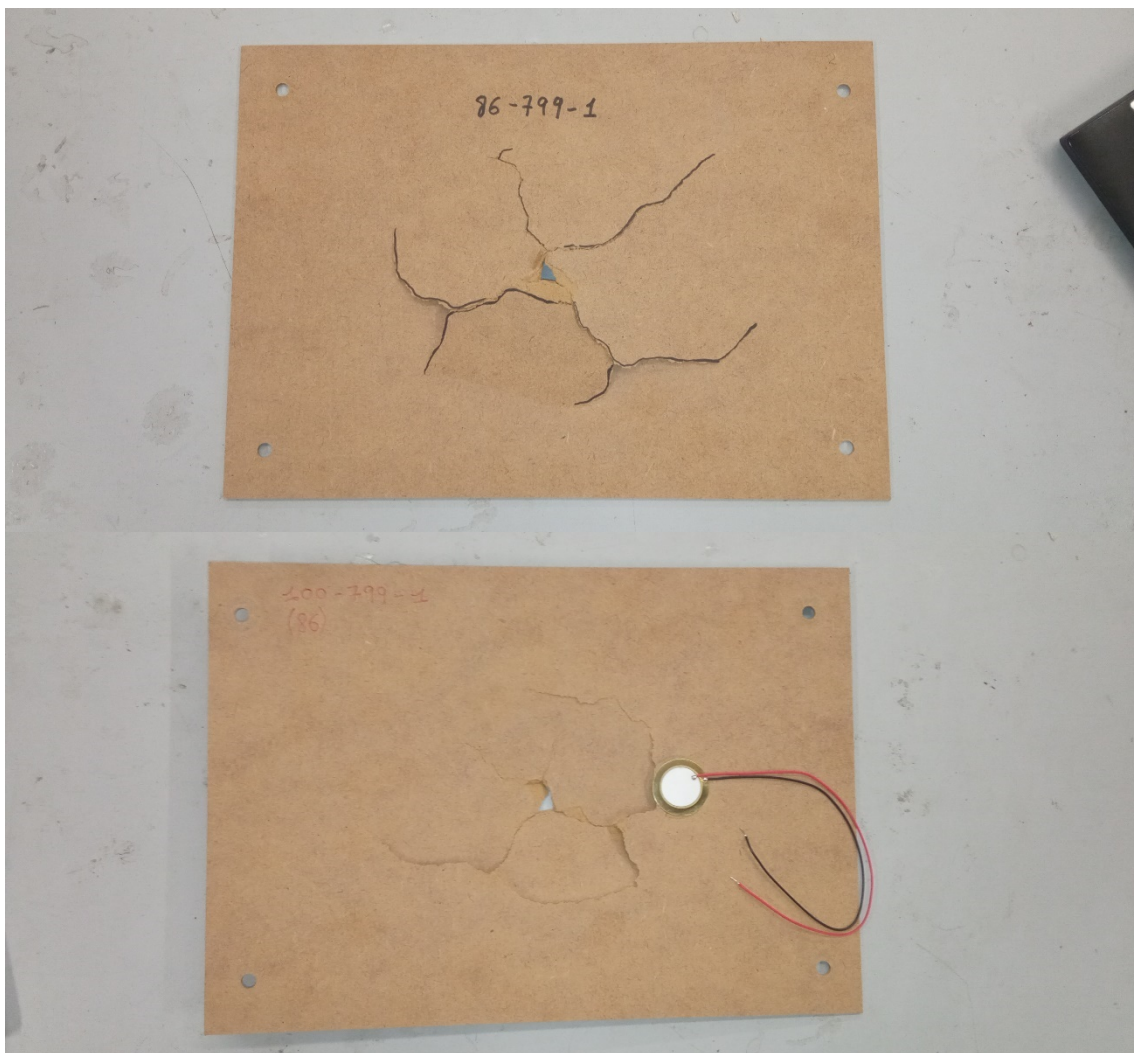
ASSAIG 65-489-2



ASSAIG 65-489-2R



ASSAIG 86-799-1



ASSAIG 86-799-2

