



Article

The secular growth of bars revealed by flat (peak + shoulders) density profiles

Anderson, Stuart Robert, Debattista, Victor P, Erwin, Peter, Liddicott, David John, Deg, Nathan and Beraldo E silva, Leandro

Available at <http://clock.uclan.ac.uk/41581/>

Anderson, Stuart Robert, Debattista, Victor P ORCID: 0000-0001-7902-0116, Erwin, Peter, Liddicott, David John, Deg, Nathan and Beraldo E silva, Leandro ORCID: 0000-0002-0740-1507 (2022) The secular growth of bars revealed by flat (peak + shoulders) density profiles. Monthly Notices of the Royal Astronomical Society . ISSN 0035-8711

It is advisable to refer to the publisher's version if you intend to cite from the work.

<http://dx.doi.org/10.1093/mnras/stac913>

For more information about UCLan's research in this area go to <http://www.uclan.ac.uk/researchgroups/> and search for <name of research Group>.

For information about Research generally at UCLan please go to <http://www.uclan.ac.uk/research/>

All outputs in CLoK are protected by Intellectual Property Rights law, including Copyright law. Copyright, IPR and Moral Rights for the works on this site are retained by the individual authors and/or other copyright owners. Terms and conditions for use of this material are defined in the [policies](#) page.

The secular growth of bars revealed by flat (peak + shoulders) density profiles

Stuart Robert Anderson^{1*}, Victor P. Debattista¹, Peter Erwin², David J. Liddicott¹,
Nathan Deg³ and Leandro Beraldo e Silva^{1,4}

¹ *Jeremiah Horrocks Institute, University of Central Lancashire, Preston, PR1 2HE, UK*

² *Max Planck Institut für Extraterrestrische Physik, Giessenbachstrasse, D-85748 Garching, Germany*

³ *Department of Physics, Engineering Physics, and Astronomy, Queen's University, Kingston, ON, K7L 3N6, Canada*

⁴ *Department of Astronomy, University of Michigan, 1085 S. University Ave., Ann Arbor, MI 48109, USA*

Accepted XXX. Received YYY; in original form ZZZ

ABSTRACT

The major-axis density profiles of bars are known to be either exponential or ‘flat’. We develop an automated non-parametric algorithm to detect flat profiles and apply it to a suite of simulations (with and without gas). We demonstrate that flat profiles are a manifestation of a bar’s secular growth, producing a ‘shoulder’ region (an overdensity above an exponential) in its outskirts. Shoulders are not present when bars form, but develop as the bar grows. If the bar does not grow, shoulders do not form. Shoulders are often accompanied by box/peanut bulges, but develop separately from them and are independent tracers of a bar’s growth. They can be observed at a wide range of viewing orientations with only their slope varying significantly with inclination. We present evidence that shoulders are produced by looped x_1 orbits. Since the growth rate of the bar moderately correlates with the growth rate of the shoulder strength, these orbits are probably recently trapped. Shoulders therefore are evidence of bar growth. The properties of the shoulders do not, however, establish the age of a bar, because secondary buckling or strong spirals may destroy shoulders, and also because shoulders do not form if the bar does not grow much. In particular, our results show that an exponential profile is not necessarily an indication of a young bar.

Key words: galaxies: bar – galaxies: bulges – galaxies: formation – galaxies: evolution – galaxies: structure

1 INTRODUCTION

Bars are found in $\sim 70\%$ of nearby disc galaxies (e.g. Eskridge et al. 2000; Menendez-Delmestre et al. 2007; Erwin 2018) and are major drivers of the evolution of galactic discs, redistributing energy, angular momentum and mass (e.g. Weinberg 1985; Sellwood & Wilkinson 1993; Debattista & Sellwood 2000; Athanassoula 2003; Kormendy & Kennicutt 2004; Debattista et al. 2006; Díaz-García et al. 2016). Understanding their formation and structure is therefore crucial to understanding galactic evolution. Elmegreen & Elmegreen (1985) studied surface photometry of 15 barred spiral galaxies and noted two types of bars – those whose surface-brightness profiles along the bar major axis was ‘flatter than’ the profile outside the bar radius, and those whose profile was a steep exponential, noting that flat bars tended to be longer and stronger than exponential bars. This was confirmed by Elmegreen et al. (1996b) in 19 barred galaxies. Instead Seigar & James (1998) found no such correlation in 24 ‘strongly barred’ galaxies, although they considered a bar profile as flat only if the profile was constant with radius. The major axis profiles of bars are now generally grouped into exponential or flat with the latter having an overall shoulder-like shape.

Various described as ‘the flat part of the bar’, ‘humps’, ‘bumps’,

‘ledges’, ‘plateaux’ or ‘shoulders’, this phenomenon is a common morphological feature of many barred galaxies along the major axis. It consists of an exponential inner part of the surface density profile, followed by a section with a much shallower gradient (not necessarily completely flat), then a much steeper downward bend to a steep exponential profile once more, often beyond the bar radius, further out in the disc.

Elmegreen (1996), Elmegreen et al. (1996a), and Regan & Elmegreen (1997) noted that early-type barred galaxies were more likely to have flat bars and isophotal twists than late-type galaxies, associating the twists with the presence of an inner Lindblad resonance (ILR). As part of their analysis of the bar fraction and characteristics in 2,106 disc galaxies, Aguerri et al. (2009) modelled three types of bars, one of which was the flat type. In their study of 46 galaxies, Elmegreen et al. (2011) also noted a tendency of early-type galaxies to have flatter bar profiles. Kim et al. (2015) studied 144 face-on ($i < 60^\circ$) barred galaxies, and found more massive and bulge-dominated galaxies had flat bars, whereas less massive galaxies had exponential profiles.

Evidence for flat bar profiles has also been found in edge-on galaxies. Tsikoudi (1980) noted a ‘hump’ in the inner portion of the major axis B -band luminosity profile of NGC 4111 and plateaux in that of NGC 4762, attributing them to a lens structure. Wakamatsu & Hamabe (1984) also noted a ‘hump’ in the profile of NGC 4762

* E-mail: SRAnderson1@uclan.ac.uk

parallel to the major axis. D’Onofrio et al. (1999) examined the radial density profile of NGC 128 and noted ‘humps’ which became less pronounced at higher height. Lütticke et al. (2000) reached a similar conclusion for a sample of 60 edge-on galaxies using NIR observations, and quantified the humps using profile gradient measurements. In their study of 30 edge-on barred galaxies, Bureau et al. (2006) found that 78% of those with a BP bulge had a flat intermediate region in the major-axis brightness profile.

Shoulder-like profiles have been seen in simulations (e.g. Schwarz 1984; Sparke & Sellwood 1987; Combes et al. 1990; Athanassoula & Beaton 2006). Combes & Elmegreen (1993) used N -body simulations to study bar formation and pattern speeds, attributing flat bars to the presence of an ILR. Noguchi (1996) pointed out ‘shoulders’ appearing in the surface density profile along the bar major axis, at the ends of the bar, in his simulations of bars in tidally interacting galaxies. In their study of N -body simulations viewed edge-on, Bureau & Athanassoula (2005) noted plateaux in the major axis surface brightness profiles, and that they grow in time as the bar lengthens; they considered that the plateaux trace or are signatures of the bar (but see Valenzuela & Klypin (2003) where flat profiles were only seen in the late stages of evolution and only for strong bars).

Clearly then, many past studies have referred to shoulders within bars but, to our knowledge, no study to date has focused on this feature in its own right in simulations. In this study, we use simulations to examine the phenomenon, and to gain insight into the mechanism by which shoulders form. We develop an automated algorithm (the shoulder recognition algorithm, hereafter the SRA) to identify a shoulder profile in an unsupervised fashion and explore the phenomenon quantitatively. We have run it against 1,319 profiles in 16 N -body simulation models and one pure star-forming model.

This paper is organised as follows. In Section 2 we introduce our definition of the shoulder and detail the methods of shoulder identification and quantification. In Section 3 we describe the models and in Section 4 we use our methods to analyse the formation and evolution of the shoulders. In Section 5 we examine how shoulders dissolve. In Section 6 we discuss implications for observations. In Section 7 we examine evidence for orbital support of the shoulders, and we discuss and summarise in Section 8.

2 SHOULDER DEFINITION AND RECOGNITION

2.1 Shoulder definition

In many real galaxies, the bar’s major-axis surface-density profile has a multi-part structure. The innermost part of the profile is steep and (often) quasi-exponential. Beyond a certain radius, it flattens to a shallower profile (an ‘up-bending’ transition) before turning to a steeper slope (a ‘down-bending’ transition) further out. Finally, the steep outer profile sometimes becomes shallower again at or just beyond the end of the bar as it transitions to the disc profile (another ‘up-bending’ transition). We define the *shoulder* as the combination of the middle two regions: the shallow part of the profile plus the steep falloff, which together are the outermost part of the bar. Such a profile therefore exhibits a central peak, followed by the shoulder (‘peak+shoulders’, see Erwin et al., *in prep.*). We argue that profiles of this type are essentially the same as the ‘flat’ profiles identified by Elmegreen & Elmegreen (1985); we remind the reader that the slope of the shallow region need not actually be close to zero.

To illustrate this, Fig. 1 shows the major axis profile of three galaxies. *Spitzer* IRAC1 ($3.6\mu\text{m}$) profiles of NGC 1387 and NGC 4340 were retrieved from the *Spitzer* archive (PI K. Sheth, Program ID

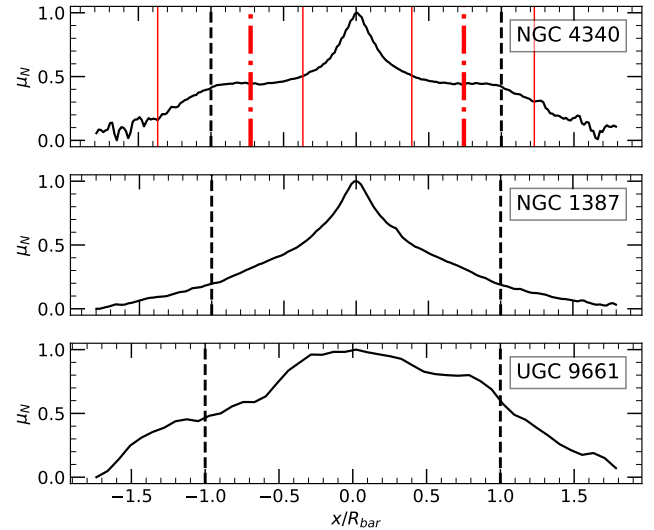


Figure 1. The normalised major axis brightness profiles (observed, not deprojected) in the *Spitzer* $3.6\mu\text{m}$ band for NGC 4340, NGC 1387 and UGC 9661. The black vertical dashed lines represent the bar radial extent. The shoulder recognition algorithm (see text) detects shoulders only in NGC 4340, with the thick red dot dash lines representing the centre of the clavicle and the red solid vertical lines representing the boundaries of the shoulder.

10043); the image of UGC 9661 came from the *Spitzer* Survey of Stellar Structure in Galaxies (S⁴G; Sheth et al. 2010). Only NGC 4340 has the shoulder profile described above, NGC 1387 has a convex profile, and UGC 9661’s profile is rather noisy. The red vertical solid lines represent the inner and outer boundaries of the shoulder as found by SRA we have developed, which is described below. The red vertical dot dashed lines represent the centre of what we term the *clavicle*¹, the centre of the flat portion of the shoulder, again as found by the SRA.

In the next subsection we describe the SRA in detail. Readers not interested in these details can skip to Section 3 which describes the models.

2.2 Shoulder recognition algorithm

We develop a shoulder recognition algorithm that is automatic, responsive to the signal-to-noise ratio of the underlying image (or possibly variations caused by dust and/or star formation), has tunable parameters that enable it to match by-eye detections, and provides a natural quantification of shoulder parameters. Our method is equally suited to simulations and observations but in the description which follows, we focus on its application to simulations. A list of symbols we use in the quantitative portions of this work and their meanings are given in Table 1.

Rather than make any *a priori* assumptions about parametric profile components (for example by fitting multi-parameter exponentials or Sérsic profiles), we use a non-parametric approach. This has the advantages of being less subjective, and requiring no visual inspection to determine fitting ranges. It can also be relatively easily automated.

Since we are investigating shoulders within the bar, we measure the

¹ In human anatomy, the *clavicle* is the collarbone, connecting the shoulder blade and the breastbone. We use it here to denote the flattest part of the shoulder structure.

Table 1. Key to symbols used in the paper.

Symbol	Meaning
a	Slope at the clavicle centre (dimensionless, point [1] in Fig. 2)
A_{bar}	Bar strength, calculated via the $m = 2$ Fourier amplitude
A_{buck}	Bar buckling amplitude
\mathcal{B}	Strength of the BP bulge
R_{bar}	Bar radial extent
R_{sh}	Outer edge of the shoulder (point [4] in Fig. 2)
$R_{\text{clav, in}}$	Inner edge of the clavicle and hence the shoulder (point [2] in Fig. 2)
\mathcal{R}_c	Radius of curvature of the smoothed, normalised logarithmic major axis surface density profile
R_{BP}	Radial extent of the BP bulge
Σ_{\star}	Stellar surface density
S	Strength of the shoulder, the fractional excess mass it contains
$\mathcal{Z}_{\text{global}}$	Global median height, normalised to its value at $t = 0$ Gyr
ρ	Ratio of normalised surface density at the clavicle to the peak density at the centre [$\log(\Sigma_{\star N, \text{clav}})/\log(\Sigma_{\star N, \text{peak}})$]

bar radius beforehand (see Section 3.3 for details). We then compute the logarithmic stellar surface mass density profile, $\log \Sigma_{\star}(x)$, along the bar's major axis, which we take as $|y| \leq 1$ kpc (see Section 3.4). In order to compare different profiles in a uniform manner, we normalise each profile to have values between 0 and 1 and denote the result as $\log \Sigma_{\star N}$. We also normalise the x -axis to the bar radius R_{bar} , so both axes are dimensionless.

Our method depends on the derivatives of this profile, so smoothing is essential. Having investigated a number of smoothing techniques, we settled on using a Butterworth lowpass filter of order 2 (Butterworth 1930). The algorithm then obtains derivatives of the smoothed profile by the method of central differences; a successful implementation depends on sufficient noise reduction to ensure smoothly varying derivatives, but not so much that the smoothed profile fails to faithfully follow the major profile features.

We achieved this balance for the simulations by examining several profiles, with a particular focus on model 2 of Debattista et al. (2020) (see Section 3.1) at $t = 5$ Gyr. We calculated the smoothed profiles with many combinations of smoothing extent and filter order. For each combination, we calculated the root-mean-square residuals between $\log \Sigma_{\star N}$ and its smoothed version, as well as the dispersion in the differences between adjacent values of the derivative $d \log \Sigma_{\star N}/dx$, and the number of extrema in that derivative (too many extrema implying insufficient smoothing). We selected the combination which gave a reasonable balance of noise reduction (with particular attention to the number of extrema in the derivative), and a faithful representation of the overall profile shape, and validated the results by visual inspection of the smoothed versus original profiles. While this part of the analysis is subjective, it is set once and held constant throughout.

We use the first derivative of the smoothed profile, $d \log \Sigma_{\star N}/dx$, to test for the presence of shoulders (see also Lütticke et al. 2000). The process is illustrated in Fig. 2. For clarity, we show the profile for $x > 0$, but the procedure is similar for $x < 0$. The bar radius and its error are calculated using Fourier analysis of the stellar surface density projected onto the (x, y) -plane, described in detail in Section 3.3.

We find all extrema of the slope $d \log \Sigma_{\star N}/dx$ which are within the bar (i.e., at $|x| < R_{\text{bar}}$) and at distances from the centre $> 0.2R_{\text{bar}}$ (we impose the latter condition as we do not wish to mix shoulders with density features associated with a BP bulge, see Erwin & Debattista 2016). We then identify the flattest such extremum – that is, the one with slope closest to zero (this marks the flattest part of the profile). Finally, we classify the profile as having a shoulder if that extremum is sufficiently flat: we define this as having a slope $< T$ (for $x < 0$) or $> -T$ (for $x > 0$). After visual inspection of many profiles, we settled on $T = 0.4$ as a reasonable threshold. Hence we do not find shoulders if (i) there is no bar or (ii) there is no region of the profile meeting the flatness criteria with respect to T . Note that we consider a profile which turns beyond zero slope with an up-bend to be a shoulder profile (an example can be seen in the top left panel of Fig. 3).

If we do identify a shoulder, we name this minimum point in $|d \log \Sigma_{\star N}/dx|$ as the centre of the clavicle (point [1] in Fig. 2). We denote the slope at the clavicle centre by a – this represents the ‘flatness’ of the shoulder.

This analysis is repeated for $x < 0$. By definition, both sides’ clavicle centres must be located at $|x| < R_{\text{bar}}$. Hence, ring-like structures with overdensities outside the bar are not considered shoulders. If we do not detect a clavicle on both sides of $x = 0$, the SRA deems the profile to have no shoulders. So we only recognise shoulder pairs. Moreover, since we recognise a clavicle as the point of the smallest absolute value of the slope, the algorithm does not detect more than one pair of shoulders.

If a profile has shoulders, we determine their *extent*; for this we use the radius of curvature of the smoothed profile, which is defined as:

$$\mathcal{R}_c = \frac{\left[1 + \left(\frac{d \log \Sigma_{\star N}}{dx}\right)^2\right]^{\frac{3}{2}}}{\left|\frac{d^2 \log \Sigma_{\star N}}{dx^2}\right|}, \quad (1)$$

and is shown as the orange dot-dashed line in Fig. 2. The only instance in the literature we have found which uses this parameter in a similar context is Lucatelli & Ferrari (2019), who use the curvature (\mathcal{R}_c^{-1}) to identify different components in the radial density profiles of observed galaxies. Foyle et al. (2008) analysed density profiles, identifying break radii, and discussed the use of profile derivatives to determine them (their Appendix B). They concluded that numerical methods were ‘clearly promising’, although they used visual estimates for simplicity.

We set the inner boundary of the clavicle to be the location of the minimum in \mathcal{R}_c nearest to the centre of the clavicle, on the side closest to $x = 0$, and its outer boundary to the corresponding minimum further out. We set the outer edge of the entire shoulder to be at the second outward minimum in \mathcal{R}_c .

In Fig. 2 we annotate key points in the quantification process in the natural order in which they are calculated: [1] the clavicle centre (thick red dot-dashed vertical line), at the minimum of $d \log \Sigma_{\star N}/dx$ which is greater than $-T$, between $x = 0$ and the bar radius; the slope at this point (a) is greater than $-T$ and so the SRA recognises a shoulder; the closer a is to zero, the flatter the shoulder; [2] the inner boundary of the clavicle, where \mathcal{R}_c reaches its first inward minimum from the clavicle centre (thick purple dot-dashed vertical line); we define the inner boundary of the entire shoulder to be located here also; [3] the outer boundary of the clavicle, where \mathcal{R}_c reaches its first outwards minimum from the clavicle centre (thick purple dot-dashed vertical line); [4] the outer edge of the entire shoulder, where \mathcal{R}_c reaches its second outward minimum from the clavicle centre (thin red vertical line); we denote this as R_{sh} ; [5] a simple linear extension

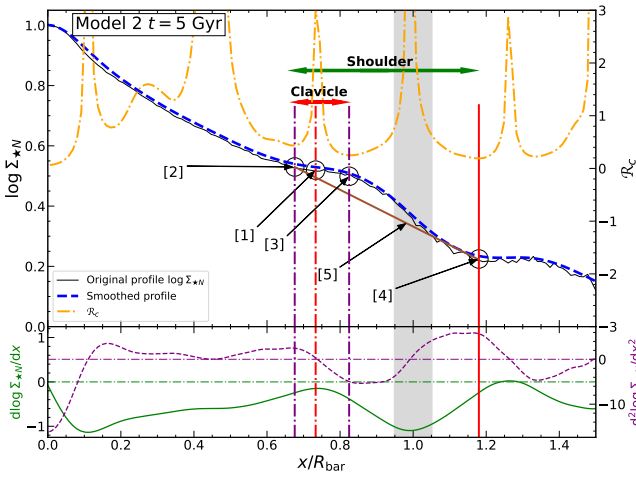


Figure 2. Normalised logarithmic density profile for model 2, at $t = 5$ Gyr to illustrate the method of shoulder quantification. The x axis is normalised to the bar radius, and we show only $x > 0$. Upper panel: the (black) line is the original profile and the (blue) dashed line is the smoothed profile, slightly offset vertically for clarity. The radius of curvature, R_c , is shown by the orange dot-dashed curve. For clarity, we plot the derivatives in the lower panel: the green line is the first derivative of the smoothed profile, and the dashed purple line is the second derivative. The horizontal dot-dash lines mark where the derivatives are zero. The permissible range of the bar radius (based on its uncertainty, see Section 3.3), centered around $x/R_{\text{bar}} = 1$, is shown by the grey area. Key locations are numbered in the natural order in which they are calculated, and are described in the text.

of the inner profile connecting inner and outer boundaries of the shoulder, constructed to estimate the excess mass contained within the shoulder (see below); we consider [4] to be the point at which the profile has reached the value where it would have been, had the shoulder been absent.

Based on these definitions, the extent of the clavicle is shown by the thick red double-headed horizontal arrow, and that of the shoulder by its green counterpart. Very thin shoulders (where the clavicle width $\leq 0.05L_{\text{bar}}$) are rejected on the basis that these are likely to be local transient density perturbations rather than the extended morphological feature we are seeking.

We quantify shoulder ‘strength’ via the ‘excess mass’ in the shoulder. We define this quantity by extending a line from the shoulder’s inner to its outer boundary (line [5] in Fig. 2) and treating this as a notional ‘original’ profile; the difference between the actual shoulder profile and this exponential is the ‘excess’. Denoting the mass along the original profile between these points as m_o , and the mass along the line as m_l , we calculate the excess mass as $m_e = m_o - m_l$, which we can then normalise to the original mass between these points. Hence our measure of shoulder strength is the dimensionless $S = m_e/m_o$. Stronger shoulders have higher fractional excess mass.

We define the errors on all calculated parameters as half the difference between the values for $x < 0$ and $x > 0$. As a proof of concept, we have run the SRA against the three bar major axis profiles shown in Fig. 1. The SRA correctly identifies the shoulders in NGC 4340, and does not recognise shoulders in the other two (NGC 1387 does not pass the first derivative slope threshold, and the shallowest first derivative slope for $x < 0$ in NGC 9661 is outside the bar).

3 THE MODELS

The majority of our models have been presented elsewhere; for the sake of concision we refer the reader to earlier papers in such cases. We use the same naming conventions for ease of reference.

3.1 N -body models

Our first set of models are pure N -body models with no gas or star formation. Several of these have been published already. From [Debattista et al. \(2020\)](#), we use models 2, 3, 4 and 5, which are baryon-dominated pure disc Milky Way-like models. From the same paper we also use the thin+thick disc model T1, as well as the dark matter-dominated model HD2. From [Debattista et al. \(2017\)](#) we use the thin+thick disc model T4.

We include an unpublished thin+thick disc model, T6. This is similar to T1 in that it has a thin and a thick disc of equal mass, both having scale length $R_d = 2.4$ kpc. The main differences are in the geometric and kinematic parameters of the two discs. T6 has an initially thicker thick disc, with scale height $h_z = 900$ pc (versus $h_z = 400$ pc in T1), a central velocity dispersion $\sigma_0 = 140$ km s $^{-1}$ (versus $\sigma_0 = 90$ km s $^{-1}$ in T1) which declines exponentially with a scale length $R_\sigma = 3.5$ kpc (versus $R_\sigma = 2.5$ kpc in T1). The thin disc differs from that in T1 by being thicker, with $h_z = 300$ pc (versus $h_z = 100$ pc for the thin disc in T1).

We also include two unpublished bulge+disc models. These have been constructed using GALACTICS ([Kuijken & Dubinski 1995](#); [Widrow & Dubinski 2005](#)). They are based on the Milky Way-like models in [Widrow et al. \(2008\)](#), which are described also in [Hartmann et al. \(2014\)](#). The profiles of the bulges are given by

$$\rho = \rho_0 \left(\frac{R}{R_b} \right)^{-p} e^{-b(R/R_b)^{1/n}} \quad (2)$$

where b is always set such that R_b is the half-mass (effective) radius. In projection, this results in a Sérsic profile.

Model CB1 is based on the Toomre- $Q = 1.75$, $X = 3.5$ model of [Widrow et al. \(2008\)](#), with a more compact and more massive bulge. We use $n = 1$, $p = 0.44$, and $R_b = 300$ pc. The density scale ρ_0 is not set directly but is set via the scale velocity (see [Hartmann et al. 2014](#)), which we set to $\sigma_b = 350$ km s $^{-1}$. The comparable model in [Widrow et al. \(2008\)](#) has $n = 0.85$, $p = 0.36$, and $R_b = 670$ pc, with scale velocity $\sigma_b = 215$ km s $^{-1}$. Model CB1 is comprised of 2 million disc particles, 0.4 million bulge particles and 1 million dark matter particles.

Model CB2 is based on the Toomre- $Q = 1.25$, $X = 2.5$ model of [Widrow et al. \(2008\)](#), with another compact bulge, having $n = 1$, $p = 0.44$, $R_b = 300$ pc and $\sigma_b = 400$ km s $^{-1}$. In contrast the comparable model in [Widrow et al. \(2008\)](#) has $n = 0.85$, $p = 0.44$, and $R_b = 580$ pc, with scale velocity $\sigma_b = 240$ km s $^{-1}$. Model CB2 is comprised of 0.9 million disc particles, 0.2 million bulge particles and 1 million dark matter particles.

Model PB1 is also a new model, which is comprised of a pseudobulge and an exponential disc built using the version of GALACTICS presented in [Deg et al. \(2019\)](#). The halo of model PB1 is a Hernquist model, defined using the GALACTICS parameters $\sigma_h = 550$ km s $^{-1}$, $R_h = 30$ kpc, $\alpha = 1$, $\beta = 4$. The main disc has $M_{d1} = 4.31 \times 10^{10} M_\odot$, $R_{d1} = 2.67$ kpc, and $z_{d1} = 0.35$ kpc while the pseudobulge is another exponential disc with $M_{d2} = 4.77 \times 10^9 M_\odot$, $R_{d2} = 0.26$ kpc, and $z_{d2} = 0.23$ kpc. Model PB1 is comprised of 2 million disc particles, 200,000 particles in the pseudo-bulge disc and 15 million dark matter particles.

The new model SD1 is built using a modified version of the GALAC-

r1CS code that generates collisionless discs using a Sérsic surface density profile:

$$\Sigma_d = \frac{M_d}{2\pi n R_d^2 \Gamma(2n)} e^{-(R/R_d)^{1/n}}, \quad (3)$$

where M_d is the disc mass, R_d is the scale length, n is the Sérsic index, and Γ is the gamma function. Model SD1 has 5×10^6 halo particles and 4.4×10^6 disc particles. The halo uses the same parameters as PB1, while the Sérsic disc has $M_d = 5.74 \times 10^{10} M_\odot$, $R_d = 0.265$ kpc, $z_d = 0.25$ kpc and $n = 2.05$.

We also include two models in which we suppress most secular bar growth by setting the halo in full prograde rotation (Debattista & Sellwood 2000; Long et al. 2014; Collier et al. 2018). This results in large spin parameters of the haloes, λ , which are rare in cosmological simulations (Bullock et al. 2001). Since our goal is to contrast these models with their evolving and growing versions with the more typical, nonrotating haloes, we are unconcerned by the fact that fully rotating haloes are very improbable in nature. The two models for which we have done this are model 2 (which becomes 2S, with $\lambda \approx 0.084$) and model SD1 (which becomes SD1S, with $\lambda \approx 0.091$).

All numerical parameters in the collisionless runs are the same as those in models 2, 3, 4 and 5 which are described in Debattista et al. (2020).

3.2 Star-forming models

Models PBG1 and PBG2 are built using the version of GALACTICS released in Deg et al. (2019), which builds equilibrium models with initially isothermal gas disks. These two models consist of 2 stellar discs, a gas disc, and a dark matter halo. For both models the main stellar disc has $M_{d1} = 4.31 \times 10^{10} M_\odot$, $R_{d1} = 2.67$ kpc, $z_{d1} = 0.32$ kpc, and an exponential disc pseudo-bulge with $M_{d2} = 5.67 \times 10^9 M_\odot$, $R_{d2} = 0.35$ kpc, $z_{d2} = 0.3$ kpc. They both have halos with $\sigma_h = 550$ km s⁻¹, $R_h = 30$ kpc, $\alpha = 1$, and $\beta = 4$. Both models have a gas disc of mass $M_g = 4.79 \times 10^9 M_\odot$. The difference between the two models is that model PBG1 has a gas disc with scale-length $R_g = 2.67$ kpc, while model PBG2 has a more extended disc, with $R_g = 6.7$ kpc.

We also use the star-forming simulation described in Cole et al. (2014), Gardner et al. (2014) and, most extensively, in Debattista et al. (2017). Uniquely, this model starts out with a gas corona but no stars at all, so its evolution is free of any potential biases that might arise from inserting a disc of stars ab initio. We adopt Gardner et al. (2014)'s designation for this model: HG1.

Models PBG1 and PBG2 were evolved with CHANGA (Jetley et al. 2008, 2010; Menon et al. 2015). Stars form out of gas with a 5% efficiency, once the cool gas density exceeds 0.1 cm^{-3} in a converging flow. Thermal and chemical turbulent diffusion uses the prescription of Shen et al. (2010), with a mixing parameter $D = 0.03$. Gas and star particles have softening of $\epsilon = 50$ pc, including newly formed stars, while the dark matter particles have $\epsilon = 100$ pc. Supernova feedback couples 15% of the 10^{51} erg per supernova to the interstellar medium. We use a base time step of $\Delta t = 2.5$ Myr with timesteps refined such that $\delta t = \Delta t/2^n < \eta \sqrt{\epsilon/a_g}$, where we set the refinement parameter $\eta = 0.175$ and a_g is the gravitational acceleration at a particle's position. We set the opening angle of the tree-code gravity calculation to $\theta = 0.7$. Gas particle timesteps also satisfy the condition $\delta t_{gas} = \eta_{courant} h / [(1 + \alpha)c + \beta \mu_{max}]$, where $\eta_{courant} = 0.4$, h is the SPH smoothing length set over the nearest 32 particles, α and β are the linear and quadratic viscosity coefficients and μ_{max} is described in Wadsley et al. (2004).

The simulations listed above do not include all the models we have studied. We include here models exhibiting interesting behaviours which help us understand the shoulder phenomenon. We emphasise that our simulations are isolated, so each model's evolution is entirely secular.

We found no obvious differences between the collisionless models, the two models with gas and the pure star-forming model HG1, so in this study we do not compare collisionless models and models with gas. We examine model HG1 in Section 4.3.6.

3.3 Bar strength, length and formation time

As we are investigating profiles within the bar, we require measurements of the bar strength and radius. Since the bar is a bisymmetric deviation from axisymmetry, we define the bar strength, A_{bar} , as the amplitude of the $m = 2$ Fourier component of the stellar particle surface density distribution, projected onto the (x, y) -plane. Having rotated the models so the bar major axis is oriented along the x -axis, we calculate the azimuthal angle (with respect to the x axis) ϕ_k of each stellar particle, of mass m_k , and then calculate:

$$A_{\text{bar}} = \left| \frac{\sum_k m_k e^{2i\phi_k}}{\sum_k m_k} \right|. \quad (4)$$

Several methods have been developed for measuring bar sizes (e.g. Aguerri et al. 2000; Athanassoula & Misiriotis 2002; Erwin 2005; Michel-Dansac & Wozniak 2006). We adopt the bar radius as the average of two calculations: the first is the (cylindrical) radius at which the amplitude of the $m = 2$ Fourier component reaches half its maximum value after the peak. The second is the (cylindrical) radius at which the phase of the $m = 2$ component deviates from a constant by more than 10° , with the uncertainty as half the difference. We refer to the resulting bar radius as R_{bar} ; the resulting average uncertainty is 10%. We calculate the time of bar formation, t_{bar} , as the time when $\log(A_{\text{bar}})$ changes from a positively sloped line to flat – *i.e.* when the instability has saturated and formed a steady bar.

3.4 Bar major axis

We restrict our analysis to the bar by taking a cut along its major axis, $|y| \leq 1$ kpc. To show that our choice of cut in $|y|$ does not materially alter our results, we show in Fig. 4 the profile for various cuts in $|y|$, ranging from 500 pc to 2 kpc for model 2. Little additional profile information is gained by increasing the width of the cut while using too thin a cut only increases the noise. We therefore adopt $|y| \leq 1$ kpc for all models in this study. We call this the ‘major axis cut’ for ease of reference, and it always implies $|y| \leq 1$ kpc.

3.5 Bar buckling and the box/peanut bulge

The bars in some of the models suffer the buckling instability (Raha et al. 1991; Martinez-Valpuesta & Shlosman 2004; Smirnov & Sotnikova 2019). Buckling manifests as a deviation from vertical symmetry, followed by a rapid increase in thickness, and generally the development of a box/peanut (BP) bulge (Bureau & Freeman 1999; Debattista et al. 2004; Athanassoula 2005; Bureau et al. 2006) in the inner part of the bar. We define the buckling amplitude as:

$$A_{\text{buck}} = \left| \frac{\sum_k z_k m_k e^{2i\phi_k}}{\sum_k m_k} \right|, \quad (5)$$

where z_k is the z coordinate of the k^{th} particle. A_{buck} has dimensions of length.

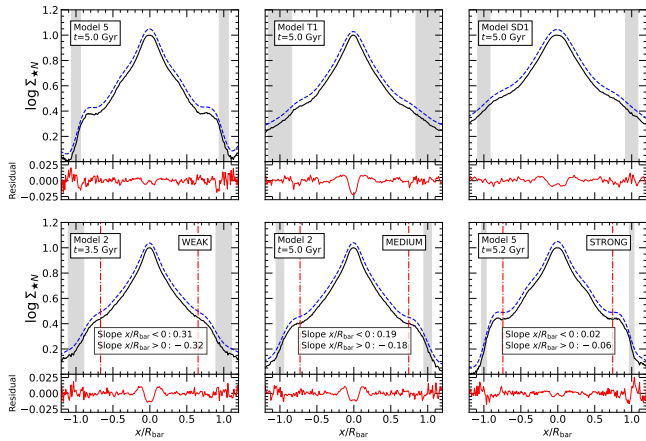


Figure 3. *Upper panels:* A sample of normalised surface density profiles along the bar major axis for three models, taken with the major-axis cut ($|y| \leq 1$ kpc). Each panel shows the original profile (black line), and the smoothed profile (dashed blue line), offset vertically for clarity. The bar radius is indicated by the grey areas. *Lower panels:* Examples of weak, medium and strong shoulder profiles. The clavicle centres are indicated by the vertical red dot dashed lines, and the slopes at the clavicle are indicated in the text beneath each profile. Residuals (difference between the smoothed and original profiles) are shown beneath each panel in red.

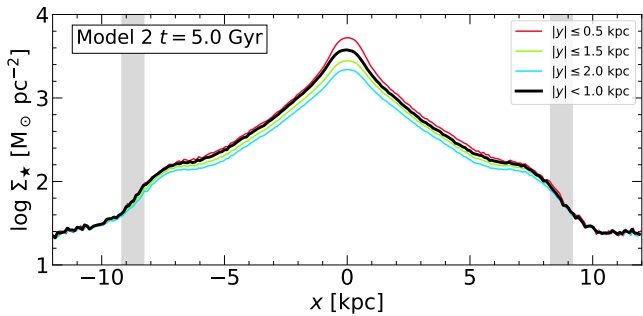


Figure 4. Logarithmic surface density profiles along the bar major axis, x , for various cuts in $|y|$, in model 2 at $t = 5$ Gyr. The thick black line shows the cut $|y| \leq 1$ kpc (the ‘major axis cut’), and is the one we use for all analyses in this study. The grey areas represent the permissible range of bar radius (see text for details).

We quantify the strength of a BP bulge following the method of [Fragkoudi et al. \(2017\)](#): we measure the maximum of the median of absolute heights ($|z|$) for the particles in radial bins of 0.1 kpc. Normalising by the global median of absolute heights at $t = 0$ ($|z|_0$) for each model makes comparison between models possible. So we define the BP strength, with tilde representing the median, as:

$$\mathcal{B} = \frac{\widetilde{|z(R)|}_{\max}}{\widetilde{|z|}_0} \quad (6)$$

We measure the radial extent of the BP bulge, R_{BP} , as the radius at which $|z|$ (and therefore \mathcal{B}) is a maximum. As a measure of vertical heating, we denote the global median $|z|$ for a model scaled to its value at $t = 0$ as $\mathcal{Z}_{\text{global}}$.

4 RESULTS

4.1 Sample model profiles

Fig. 3 (upper panels) shows examples of the original and smoothed profiles and their residuals for a selection of models. The residuals outside the bar are generally larger than those within, but this is not a concern as we are interested in the profiles within the bar. We also find that the central regions of highly concentrated models can have larger residuals; however these inner regions are not of concern either because the shoulders do not reside there.

Judging whether a profile has shoulders is somewhat subjective; as discussed earlier, the SRA uses the clavicle slope as a threshold. Consider the three profiles shown in the lower panels of Fig. 3. In all cases the profile slope changes at $|x/R_{\text{bar}}| \sim 0.75$. At this point, the profile on the left has barely perceptible shoulders, the middle panel exhibits clear shoulders, while the right panel has strong shoulders. The slopes’ absolute values decrease as the shoulders strengthen. Thus the slope lends itself to shoulder identification and quantification – there is an absolute slope value above which we consider shoulders to be absent.

As an example from our simulations, the left panels of Fig. 5 show the logarithmic surface density plot in the (x, y) -plane for model 2 at $t = 5$ Gyr (the same model and time as in Fig. 4). The model has a strong bar; the shoulder profile is visible at $|x| \sim 7$ kpc within the bar radius (indicated by the grey shaded regions), and is roughly symmetric about $x = 0$. This is accompanied by an increase in the contour spacing along the major axis. The downwards bend occurs just after the end of the bar, as was found in the simulations of [Athanasoula & Beaton \(2006\)](#).

Note that we consider an ‘up-bending’ profile within the bar to be a shoulder profile. An example can be seen in the top left panel of Fig. 3 (model 5 at $t = 5$ Gyr). The SRA recognises this as a shoulder.

Outer rings are not considered shoulders. The right hand panels of Fig. 5 show model HD2 at $t = 7.6$ Gyr. The flat overdensities at $|x| \sim 6$ and 9 kpc are *not* shoulders, since they lie outside the bar. The surface density plot in the upper panel shows that these are *rings*. Moreover, shoulders are not the same phenomena as Freeman Type II profiles ([Freeman 1970](#); [Erwin et al. 2008](#)), down-bending disc breaks in the azimuthally averaged profiles which occur much further out in the disc than the bar.

4.2 Bar formation and buckling

We start our study of the simulation suite by describing the evolution of the bars in the models. Fig. 6 shows the evolution of the global bar and buckling amplitudes, A_{bar} and A_{buck} . We group the simulations into those that strongly buckle (group B) and those that have weak or no buckling (group WNB). Five of the group B models (models 2, 2S, 3, 5 and T4) undergo a second major buckling. In most group WNB models, bar strength grows smoothly (top row, right two columns), but there are some with flat or declining bar strengths. We have explored other ways of grouping the models, including the bar ‘speed’ (fast or slow as determined by \mathcal{R} , the ratio of corotation radius to bar radius, with a separation at $\mathcal{R} = 1.4$), and heights within and outside the bar. However we were unable to find any more insightful grouping than those that buckle, and those which do not (or do so very weakly). We also checked central concentration via the C_{28} parameter ([Kent 1987](#)), defined as $5 \log(R_{80}/R_{20})$, with R_{80} and R_{20} being the cylindrical radii containing 80% and 20% of the stellar mass, respectively. A high central mass concentration suppresses buckling ([Berentzen et al. 2007](#); [Iannuzzi & Athanasoula 2015](#); [Seo](#)

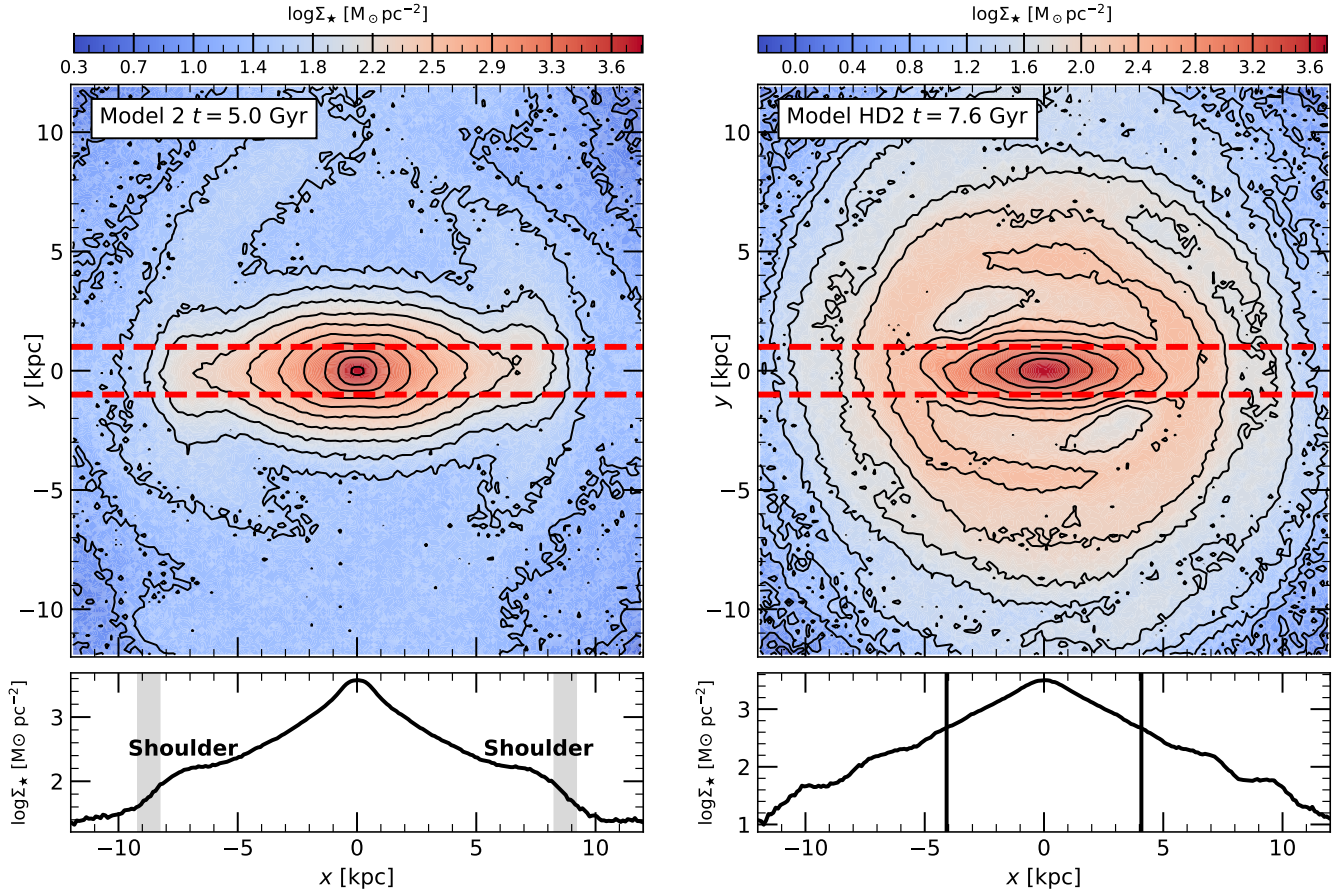


Figure 5. *Upper panels:* Logarithmic stellar surface density plot in the (x, y) -plane for models 2 at $t = 5$ Gyr (left) and HD2 at $t = 7.6$ Gyr (right). The red horizontal dashed lines represent $y = \pm 1$ kpc. *Lower panels:* logarithmic stellar surface density profile along the bar major axis for $|y| \leq 1$ kpc, for the respective models and time steps. The grey areas represent the bar radius (vertical black lines for model HD2 as the error in bar radius is small at this time step). In model 2, the shoulders are centred at $|x| \sim 7$ kpc. In model HD2, the ring encircling the bar at $\sim 5 - 7$ kpc produces a flat profile similar to shoulders, but lies outside the bar and so does not qualify as a shoulder profile.

et al. 2019), so this is degenerate with the B/WNB grouping we adopt, with $\langle C_{28} \rangle = 2.78(3.78)$ for B (WNB) models at $t = 0$. We therefore rely on the B and WNB groupings throughout.

Fig. 6 also shows the evolution of Z_{global} (bottom row, dashed line); for model HG1, we normalise this to $|z|$ at $t = 3$ Gyr since at $t = 0$ we have no stellar particles, and by 3 Gyr we have a stable bar. This ratio increases with time in both groups. Each major buckling episode in group B is accompanied by a large increase in Z_{global} , as the buckling heats the disc vertically. In contrast, in group WNB models the increase in Z_{global} is gradual. Table 2 presents an overview of some key evolutionary parameters.

4.3 Formation and evolution of shoulders

4.3.1 Shoulder detection

To ensure consistency of treatment, we apply the SRA in an automated fashion to each time step in all models. We apply it to nine group B (buckling) models, and seven group WNB (weak or non-buckling) models. Figs. 7 and 8 show the evolution of the major axis density profiles for groups B (less model 2S) and WNB (plus model 2S), respectively. In these plots, time increases vertically with regu-

larly spaced markers in Gyr. The blue symbols show the bar radial extent. Shoulders, when recognised by the SRA, are marked in red. For group B models, major buckling episodes (maxima in A_{buck}) are shown by thick green lines.

Although the SRA removes human subjectivity by running automatically, it is still subject to noise and transient effects. For example, transient spirals or density perturbations within a growing bar can be mistaken by the algorithm for shoulders. Often these features are seen around the time of bar formation, do not persist for more than 1–3 time steps and are highly asymmetrical about $x = 0$ (e.g. model 2 at ~ 1.5 Gyr). We define *persistent shoulders* as those which survive more than 3 consecutive time steps, and transients are those surviving for 3 or fewer consecutive time steps. We none the less retain all shoulder recognitions made by the algorithm, regardless of physical origin, since transients would be observationally indistinguishable from persistent shoulders. We disregard them in some analyses below, as stated in the text.

Including transients, this results in a dataset of 364 (of 909 or 40%) and 375 (of 707 or 53%) time steps with shoulders for groups B and WNB, respectively.

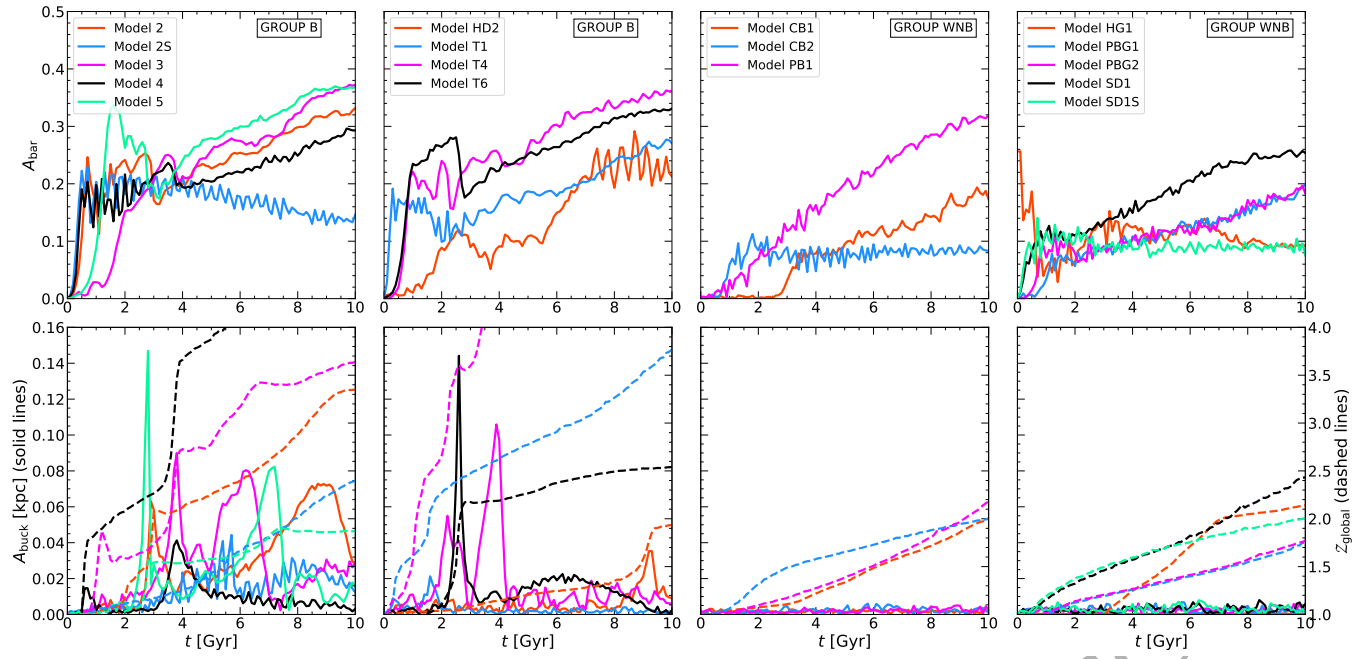


Figure 6. The global bar and buckling amplitudes A_{bar} and A_{buck} for models in groups B and WNB. Top row: A_{bar} . Bottom row: A_{buck} (solid lines) and Z_{global} (dashed lines). Note that the ordinate axis scale is the same in each panel to ease comparison. Buckling amplitudes are close to 0 in most WNB models, and Z_{global} increases more steadily in these models than in B models.

Table 2. Key evolutionary characteristics of the models.

Model	Group	t_{bar} [Gyr]	t_{buck} [Gyr]	$R_{\text{bar, end}}$ [kpc]	t_{sh} [Gyr]	$t_{\text{sh}} - t_{\text{bar}}$ [Gyr]	$t_{\text{sh}} - t_{\text{buck}}$ [Gyr]	S_{max}	$a_{\text{shallowest}}$
Model 2*	B	0.7	2.9	11.6	3.5	2.8	0.6	0.24	-0.18
Model 3*	B	2.1	3.8	11.0	3.1	1.0	-0.7	0.26	-0.12
Model 4	B	0.5	3.8	9.3	4.1	3.6	0.3	0.14	-0.18
Model 5*	B	1.6	2.9	9.7	3.5	1.9	0.6	0.35	-0.03
Model T6	B	1.0	2.6	13.7	-	-	-	-	-
Model HD2†	B	2.6	9.3	4.8	6.3	3.7	-3.0	0.28	0.05
Model T1	B	0.3	1.6	10.1	3.8	3.5	2.2	0.13	-0.2
Model T4*	B	1.0	2.2	12.6	1.9	0.9	-0.3	0.25	-0.26
Model 2S*	B	0.5	5.5	7.4	-	-	-	-	-
Model HG1‡	WNB	3.5	-	3.0	6.7	3.2	-	0.08	-0.22
Model CB1	WNB	3.2	-	7.2	3.2	0.0	-	0.16	-0.21
Model PB1	WNB	1.0	-	7.1	2.3	1.3	-	0.24	-0.04
Model CB2	WNB	1.1	-	5.7	-	-	-	-	-
Model PBG1	WNB	0.6	-	6.2	3.5	2.9	-	0.13	-0.17
Model PBG2	WNB	0.3	-	6.3	0.8	0.0	-	0.12	-0.15
Model SD1	WNB	0.8	-	7.8	4.0	3.2	-	0.21	0.09
Model SD1S	WNB	0.8	-	3.6	-	-	-	-	-

t_{bar} : The time of bar formation, defined in Section 3.3.

$R_{\text{bar, end}}$: The length of the bar at the end of the model's run.

t_{buck} : The time of the first major peak A_{buck} .

t_{sh} : The time when persistent shoulders are first recognised by the SRA, disregarding transients (see Section 4.3).

S_{max} : The maximum strength of the shoulders in the model's run, as defined in Section 2.2.

$a_{\text{shallowest}}$: The shallowest slope (*i.e.* maximum flatness) of the shoulders in the model's run. The closer this figure to 0, the flatter the shoulder at its shallowest.

*These models undergo a second major buckling, defined by a second major peak in A_{buck} .

†This model develops a BP bulge via resonant trapping before the bar buckles – see text.

‡The pure star-forming model.

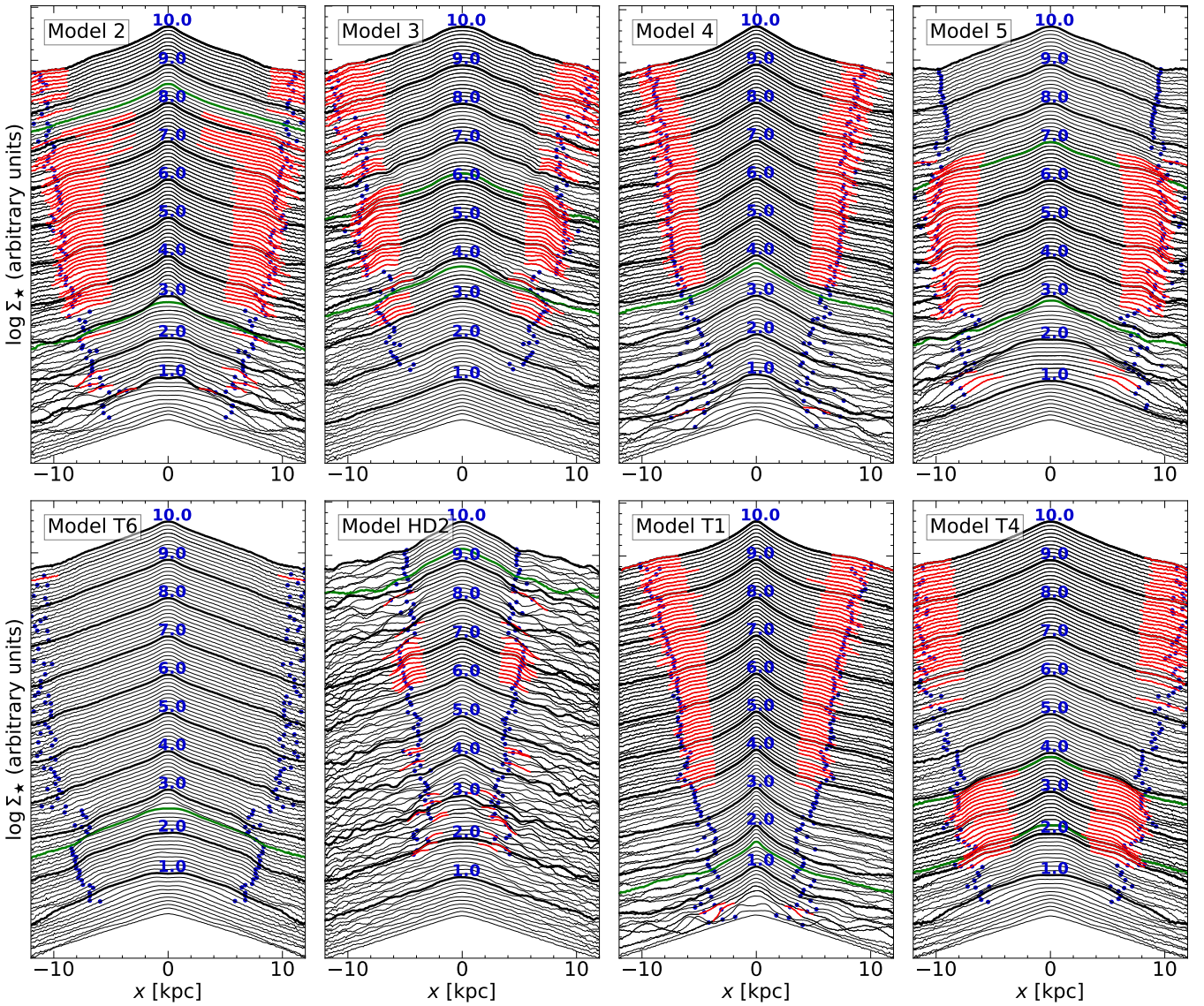


Figure 7. Evolution of the logarithmic surface density profile in the major axis cut for group B models (except model 2S which is shown in Fig. 8). Time advances along the vertical axis. Every 1 Gyr, the profile is highlighted in bold and the time in Gyr indicated above the maximum density. The blue dots represent the bar radius. If the SRA recognises a shoulder, its extent (inner to outer edge) is shown in red. The times of major buckling episode peaks are shown in green. Shoulders, if present, usually appear after first buckling.

4.3.2 Buckling versus weakly or non-buckling models

The most striking difference between the two groups is the smooth growth of shoulders relatively soon after the bar’s formation in most WNB models, whereas in most B models, persistent shoulders form during or after the first buckling episode (note that early spiral interference gives rise to transient shoulders in a few brief intervals) and tend to evolve more irregularly.

The weakening of the bar at buckling in group B models is seen in their temporary retreat (Debatista et al. 2006; Martinez-Valpuesta & Shlosman 2004), although no bar is destroyed by buckling. In some WNB models (e.g. PBG2 at ~ 2.6 Gyr), the shoulders weaken temporarily, and are not recognised by the SRA until they reappear later.

In Table 2, column $t_{\text{sh}} - t_{\text{bar}}$ shows the delay between bar formation and formation of persistent shoulders. The delays are somewhat

smaller for group WNB. The exceptions are models PBG1 and SD1 (persistent shoulders form ~ 3 Gyr after bar formation in each case).

Column $t_{\text{sh}} - t_{\text{buck}}$ shows the time delay between first buckling and first detection of persistent shoulders in group B models, disregarding transients. A wide range of delays is seen, from almost immediate (models 5 & T4) to ~ 3 Gyr (model 3).

4.3.3 Relation with BP bulges

We have verified, by inspecting the surface density in the (x, z) -plane, that all WNB models gradually form BP bulges. Quillen (2002) demonstrated that this is possible by resonant trapping of stars, rather than by the more violent buckling instability, and Petersen et al. (2014) and Sellwood & Gerhard (2020) demonstrated this using N -body simulations. This ‘slow mode’ of BP growth results from

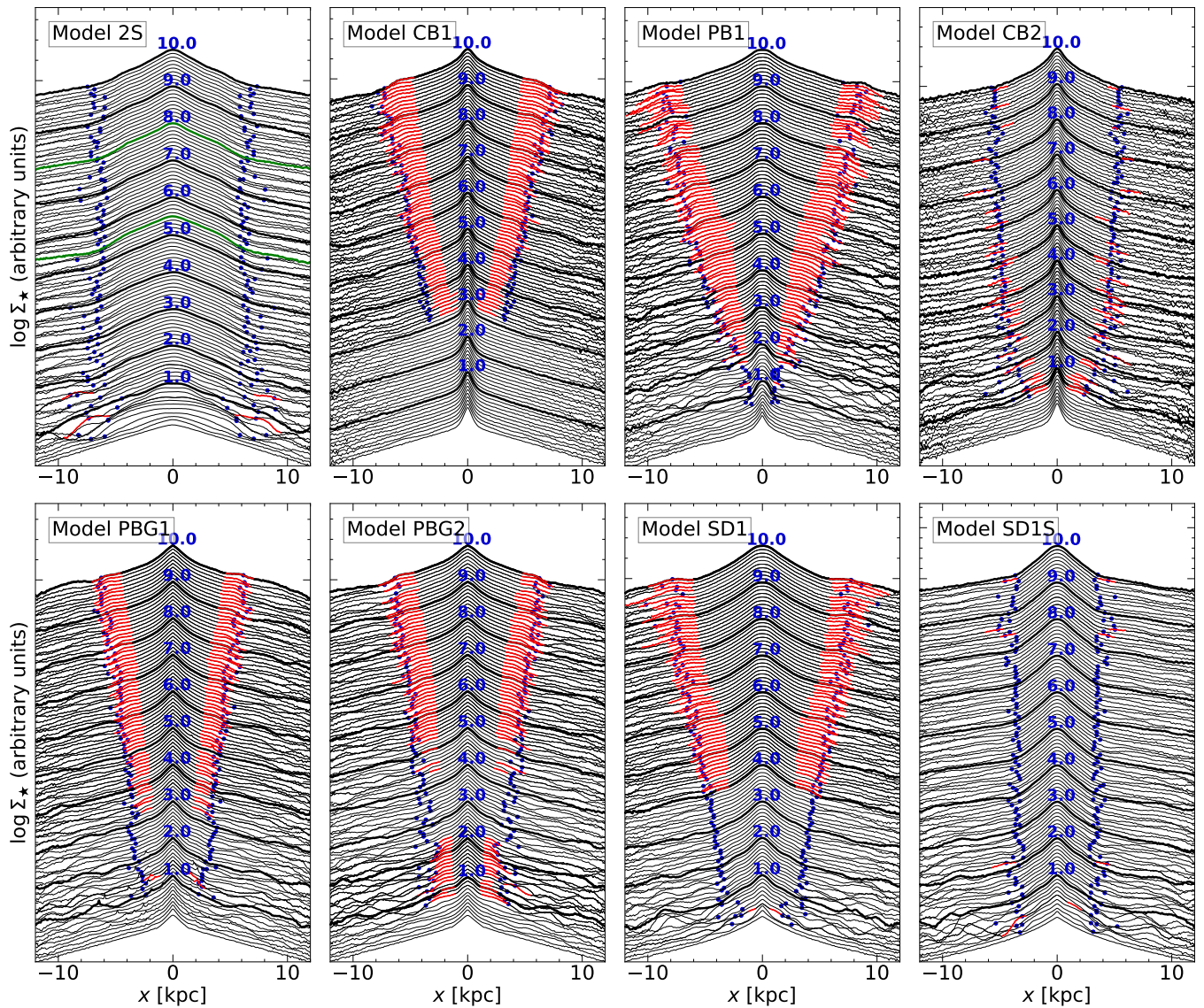


Figure 8. Evolution of the logarithmic surface density profile in the major axis cut for group WNB models, and buckling model 2S (top left). Time advances along the vertical axis. Every 1 Gyr, the profile is highlighted in bold and the time in Gyr indicated above the maximum density. The blue dots represent the bar radius. If the SRA recognises a shoulder, its extent (inner to outer edge) is shown in red. The times of the major buckling peak in model 2S are shown in green. Shoulders, if present, grow steadily soon after bar formation.

the high central mass concentration in group WNB models (which have discy pseudobulges), which suppresses the buckling instability (Sotnikova & Rodionov 2005; Petersen et al. 2014).

We checked for the presence of BP bulges in all models by examining height profiles, the fourth order Gauss-Hermite moments of the z axis line of sight velocity and height distributions (Debattista et al. 2005), and by visual inspection. Persistent shoulders in most B models develop during or after the emergence of a BP bulge. In most WNB models shoulders appear before BPs. There is a wide range of time differences between when shoulders and BPs emerge – the two phenomena do not always appear together.

4.3.4 Connection between shoulders and bar growth

Fig. 9 shows the evolution of the fractional change in major axis surface density from a time shortly before the shoulders form for two models (group B model 2 and group WNB model PB1), and model T6 whose profile remains nearly exponential (no shoulders). As the bar grows in models 2 and PB1, the density within the shoulder area increases, with the peak increase at the location of the clavicle. This suggests that additional material trapped by the growing bar ‘concentrates’ at the clavicle. The exponential bar in T6 also shows a density increase near its end as the bar recovers from its buckling, but not enough for the model to manifest a shoulder profile. At $t \sim 8$ Gyr, bar growth falters (black line) and the (small) overdensity then reduces. These results hint at a link between growth of the shoulders and growth of the bar.

The two models with spinning prograde haloes (2S and SD1S)

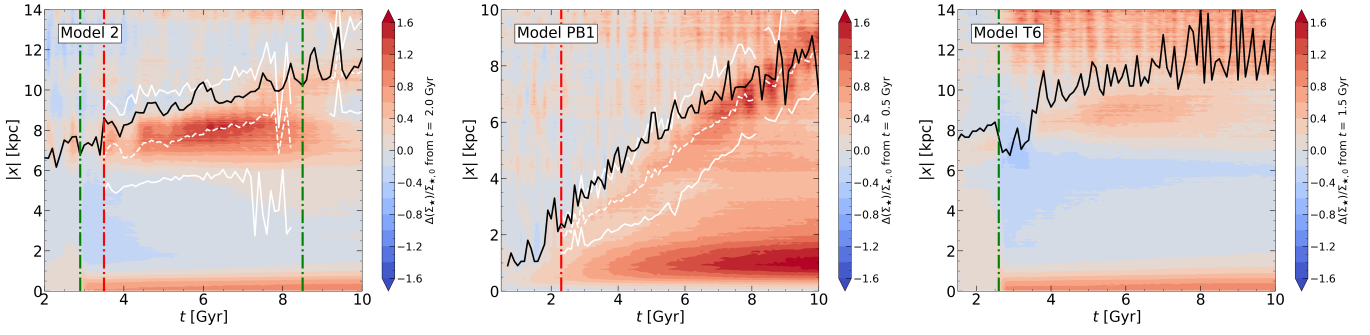


Figure 9. The fractional change in major axis surface density ($|y| \leq 1$ kpc) for group B model 2 (left panel), group WNB model PB1 (middle panel), and model T6 whose profile remains (close to) exponential throughout its evolution (right panel). The black line is the bar radial extent. The two white lines represent the inner and outer edges of the shoulders, and the white dashed line represents the outer edge of the clavicle. Green vertical dot dash lines represent buckling times. Red vertical dot dash lines represent times when the SRA first recognises persistent shoulders. Note the different scales on the y axes. As the bar grows in models 2 and PB1, the density within the shoulder area increases, with the peak increase at the clavicle.

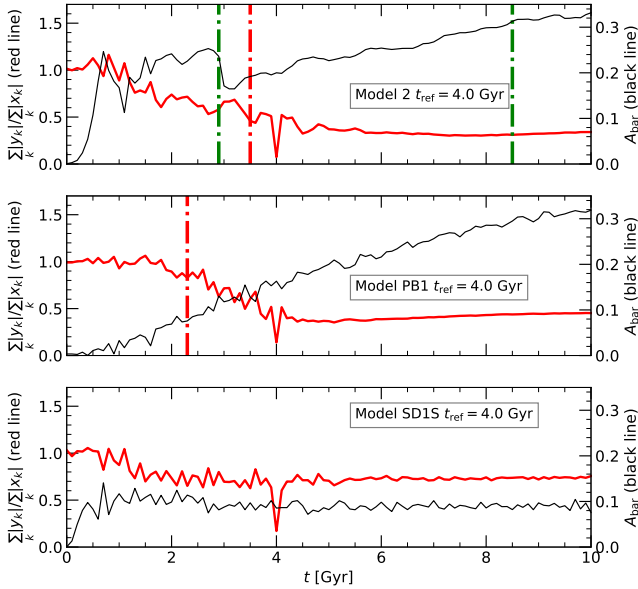


Figure 10. Evolution of the ratio $\sum_k |y_k| / \sum_k |x_k|$ (sum over particles) of the density distribution (red line) for particles in the shoulder at times t_{ref} as indicated in the annotation in each panel. For model SD1S, which lacks shoulders, we take particles in the ‘equivalent’ shoulder region $0.66 \leq |x|/R_{\text{bar}} \leq 1.1$ (the mean shoulder region for all shoulders in all models). Since we select particles in the shoulder regions at $t = t_{\text{ref}}$, we expect and see a large drop in this ratio at that time (at t_{ref} , the particles are in two rectangular volumes either side of $x = 0$). Black lines: A_{bar} . Red vertical dot-dashed lines: times shoulders are first recognised. Green vertical dot-dashed lines: times of major buckling.

do not manifest any persistent shoulders. In these two models the bar growth is clearly suppressed – the blue markers indicating R_{bar} hardly move in radius at all during 10 Gyr of evolution (Fig. 8). The bar cannot grow significantly owing to the inability of a maximally spinning halo to absorb its angular momentum (although the outer disc may still absorb a small fraction) – see Athanassoula (2002). Clearly then, if the bar forms but cannot grow, it will not develop shoulders, although lack of shoulders does not necessarily signify a bar which is not growing (*e.g.* model T6, Fig. 7).

4.3.5 Shoulder particle trapping by the bar

Bars grow by trapping stellar orbits. To further investigate the connection between bar growth and the shoulders, we explore how the particle orbits that come to make up the shoulder evolve with time. We do this by identifying particles present in the shoulder region at a ‘reference’ time t_{ref} and computing the observed mean elongation of the distribution in x and y at times both before and after this time (for the same particles). At very early times, we expect these particles to lie outside the bar and thus have roughly circular distributions; as they become trapped by the growing bar, their mean distribution should become more elongated. We do this for models 5 and SD1, with reference time $t_{\text{ref}} = 4.0$ Gyr; the mean elongation is computed as $\sum_k |y_k| / \sum_k |x_k|$ for all particles k within the shoulders at t_{ref} . Values of $\sum_k |y_k| / \sum_k |x_k| \sim 1$ indicate near-circular orbits. For comparison, we also perform this analysis for model SD1S, which remains exponential and does *not* form shoulders; we define an ‘equivalent’ region corresponding to the mean shoulder extent (relative to the bar size) from the models that do form shoulders.

Fig. 10 shows a gradual reduction in $\sum_k |y_k| / \sum_k |x_k|$ from ~ 1 , followed by an approximately constant value of ~ 0.4 for models 2 and PB1 (red lines). This is an indicator of trapping by the bar as orbits become elongated, and the particles in the shoulder at t_{ref} are largely trapped by the time the ratio reaches ~ 0.4 . The particles in the exponential bar in model SD1S show similar trapping behaviour; however, the final (post trapping) ratio in this case is significantly higher (~ 0.7), a much lower level of elongation. This indicates that these particles are not trapped into the same orbit morphology as those particles destined to be in a shoulder. The bar in this model does not grow, and no shoulders form. High elongation orbits are adopted by newly trapped particles once the bar begins its growth (we explore the orbits supporting the shoulders in Section 7); in other words, bars are not formed with shoulders but acquire them as they grow.

4.3.6 Pure star-forming model

All models considered so far had stellar discs as part of the initial setup. To determine if our conclusions are strictly a result of these initial conditions, we examine model HG1 (see section 3.2). This model does not buckle strongly. As shown by Athanassoula et al. (2013), in the presence of significant amounts of gas, bars are expected to form later and be weaker than in gas-free models. Model

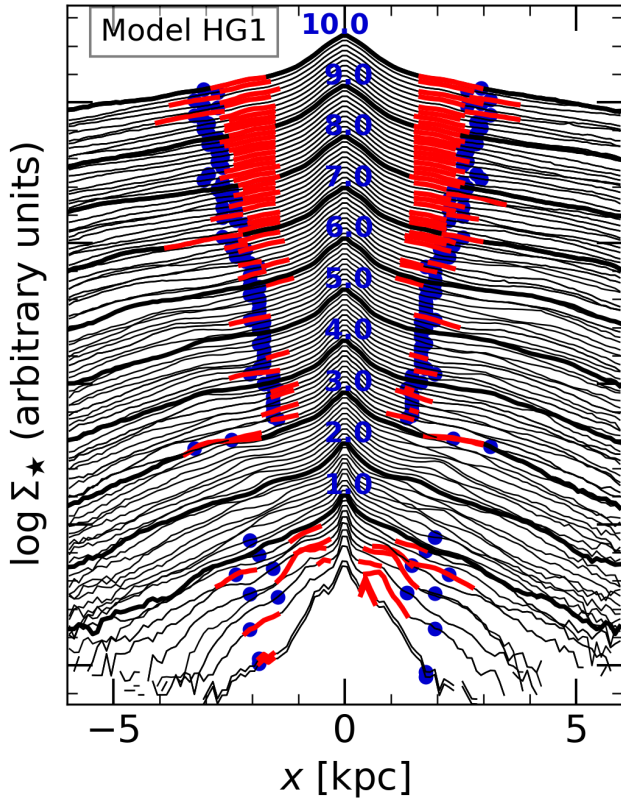


Figure 11. Evolution of the logarithmic surface density profile in the major axis cut for the pure star-forming model HG1. Time advances along the vertical axis. Every 1 Gyr, the profile is highlighted in bold and the time in Gyr indicated above the maximum density. The blue dots represent the bar radius. If the SRA recognises a shoulder, its extent (inner to outer edge) is shown in red. The pure star-forming model forms persistent shoulders as do the N -body models.

HG1 shows these characteristics; it forms a smaller bar at ~ 3 Gyr. From that point the bar grows moderately but steadily ($R_{\text{bar}} \sim 3$ kpc at $t = 10$ Gyr). The bar is weaker than in models with initial discs, having max $A_{\text{bar}} \sim 0.12$. Fig. 11 shows the shoulder evolution for this model. Persistent shoulders only emerge once the bar grows significantly in radius at ~ 6 Gyr, consistent with our earlier analysis. We have verified, by examining the height profile, fourth-order Gauss-Hermite moments of the (x, y) line of sight velocity and height distributions (Debattista et al. 2005) along the major axis that a BP bulge is present when the shoulders appear. Since these results are consistent with those for the models with initial discs considered above, we conclude that those initial conditions do not lead to artificial shoulder formation. Nonetheless, the bars in the pure N -body simulations grow rapidly and quickly become larger (mean $R_{\text{bar}} = 8.4$ kpc at $t = 10$ Gyr) than those observed (Erwin 2019).

4.4 Quantitative properties of the shoulders

We have shown that persistent shoulders develop as a part of bar growth, and are accompanied by BP bulges. We now examine quantitatively the relationship between bar/BP growth and shoulder evolution.

4.4.1 Shoulder outer edge location

For all models which have shoulders at $t = 10$ Gyr, we compute the location of the shoulder edge (R_{sh}), normalised to R_{bar} (bar radius) and R_{BP} (BP bulge ‘radius’). Groups B and WNB are consistent within the errors. On average, R_{sh} lies just beyond the bar radius, with $R_{\text{sh}}/R_{\text{bar}} = 1.16 \pm 0.06$. There is little evolution of this ratio in most models. With respect to the BP bulge radial extent, we find $R_{\text{sh}}/R_{\text{BP}} = 2.30 \pm 0.27$. This is consistent within errors with Lütticke et al. (2000), who found a ratio of 2.7 ± 0.3 in a sample of 43 edge-on barred galaxies.

4.4.2 Shoulder edge, strength and flatness

Fig. 12 shows the evolution of the shoulder strength S and slope a (i.e. the flatness), starting at the time of first shoulder detection for each model.

Usually, S increases with time in both groups (unless secondary buckling or periods of shoulder weakening occur, e.g. model 5 at ~ 5 Gyr after first shoulder recognition), and the shoulder evolves towards 0 slope (i.e. flatter). As the shoulders grow they contain an ever higher fraction of excess mass. We have verified that in most models, R_{sh} , when normalised by R_{bar} , remains within a relatively narrow range, supporting the idea that shoulders develop as part of the bar’s evolution. This is consistent with the simulations of Bureau & Athanassoula (2005), who found that the extent of the ‘plateaux’ grew with time as the bar lengthened.

4.4.3 Correlations with bar and BP properties

Fig. 13 plots S and a versus A_{bar} . There is no general correlation (see also Fig. 10 where shoulders form at different bar strengths); however, for around half of the individual models – many WNB models and models T1, 2 and 4 before shoulder weakening – the strengths of the shoulders and bar are correlated, albeit with significant scatter (top row), with a similar, but weaker relation between a and A_{bar} (bottom row). S and a are similarly correlated with R_{bar} (not shown). For these models, the stronger and longer the bar, the stronger and flatter the shoulder. We note that the slope for model SD1 becomes positive towards the end of the simulation, i.e. up-bending shoulders (see Fig. 8).

In Fig. 14, we show the relationship between dS/dt and dR_{bar}/dt for all models, split between B and WNB models. We disregard transients and smooth out some of the noise by averaging every four time steps. Note that we have few points with $dR_{\text{bar}}/dt < 0$, since there are relatively few time steps where the bar is shrinking in radius. Although still somewhat noisy, the plot shows that as the rate of increase in bar radius rises, so does the rate at which excess mass is trapped in the shoulder. This, coupled with the demonstration above that the longer the bar the stronger the shoulders, is evidence of a link between growth of the bar, and strength of the shoulders.

Fig. 15 plots shoulder parameters versus BP size and strength \mathcal{B} . Within most WNB models, the shoulders become flatter and stronger as the BP bulge becomes stronger. For most buckling models, the shoulders grow alongside a BP bulge whose strength remains relatively constant. For models exhibiting the correlation between R_{BP} and \mathcal{B} , a variety of slopes is observed.

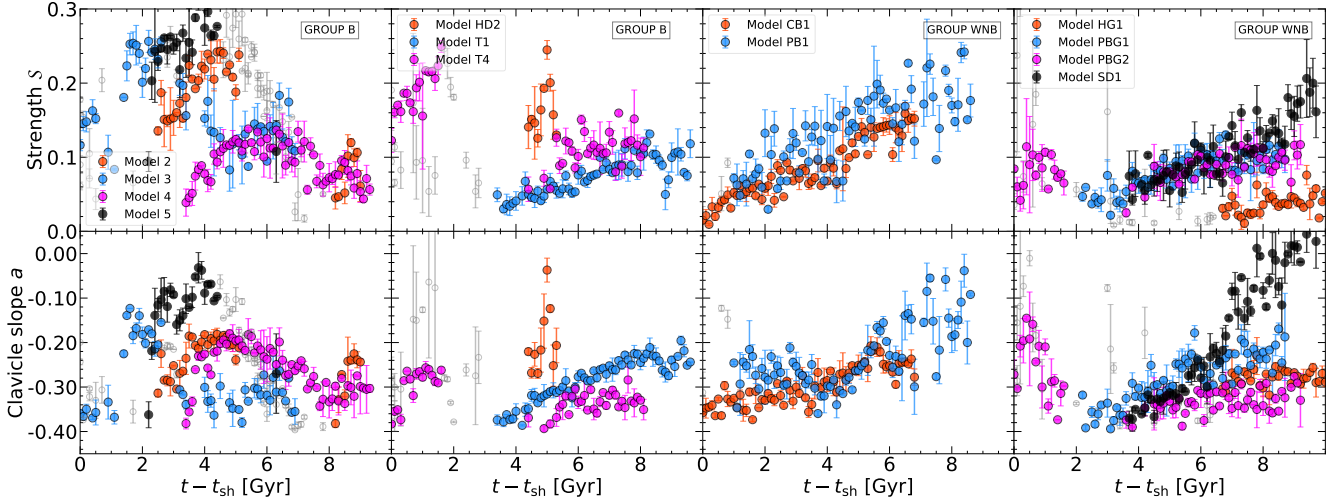


Figure 12. The evolution of shoulder edge, R_{sh} , normalised to R_{bar} , strength, S , and slope, a , as a function of time since shoulder formation. Transient shoulders, and periods of decline during secondary buckling, are shown with grey symbols to focus on periods of steady shoulder growth.

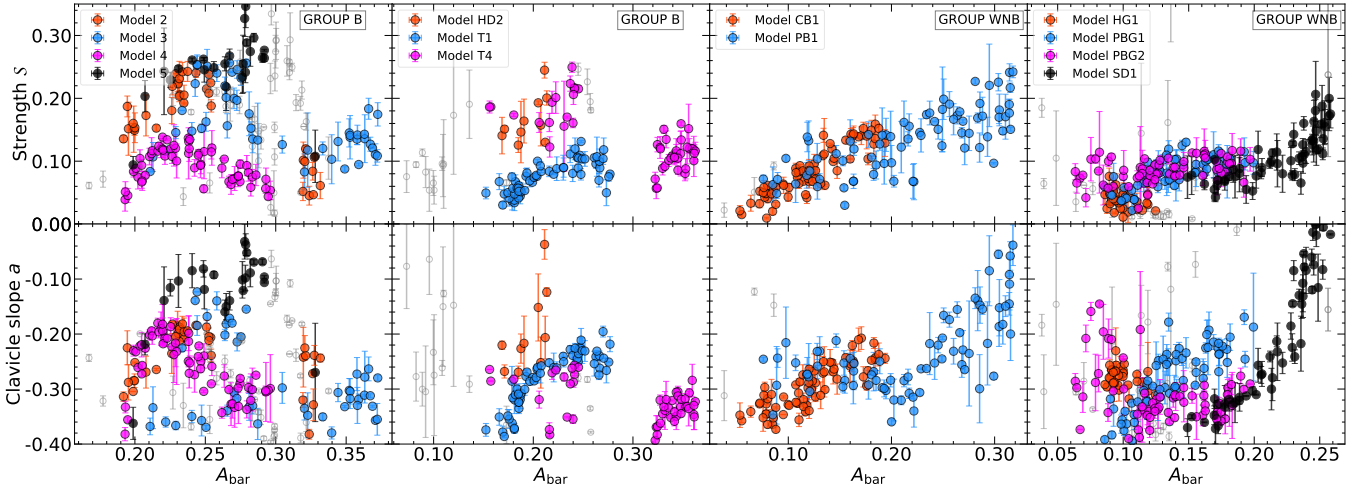


Figure 13. Plots of shoulder strength and slope with bar strength A_{bar} . Transient shoulders, and periods of decline during secondary buckling, are shown with grey symbols to focus on periods of steady shoulder growth.

5 SHOULDER DISSOLUTION

In most models shoulders persist once established (Figs. 7, 8). In some models, however they dissolve with little impact on the bar strength (models 5 and T4 in Fig. 7). For model 5, the shoulders exist only between the first and second buckling. The second buckling is responsible for shoulder dissolution. Dissolution does not need to be permanent: model 3 suffers two buckling episodes, but its shoulders recover soon after the second.

Fig. 16 shows the radial evolution of A_{buck} for model 5. The first buckling episode ($t \sim 2.8$ Gyr) results in a BP bulge. Persistent shoulders form at $t \sim 3.5$ Gyr and grow steadily. The second buckling at $t \sim 6.8$ Gyr occurs in the shoulder area, with A_{buck} peaking between the middle of the clavicle to the end of the bar although there is little impact on the bar strength (Fig. 6). The portion of the disc at radii smaller than the inner clavicle edge is not affected by the second buckling (consistent with the simulation of Lokas (2019), who

found a second buckling was concentrated in the outer part of the bar, and did not impact the bar strength). As the second buckling begins, the entire shoulder retreats somewhat before vanishing. This happens rapidly (~ 0.7 Gyr separate the peak in A_{buck} at second buckling and the time when the SRA no longer recognises shoulders). Qualitatively similar results are observed for models 2, 3 and T4, except that in model 3, the shoulders regrow almost immediately. Major secondary buckling is thus focused in the shoulder area, and rapidly turns a flat bar profile into an exponential one. In some cases shoulders are able to regrow quickly. This is dependent on the bar's ability to capture sufficient additional material after the second buckling episode. We have verified that the corotation radius (R_{CR}) increases gradually in all models except those with spun-up halos (D6S and SD1S). It might be that, after a second buckling, a relative dearth of material beyond R_{CR} prevents quick reformation of the shoulders, since the bar has less additional mass to trap than previously, when R_{CR} was lower.

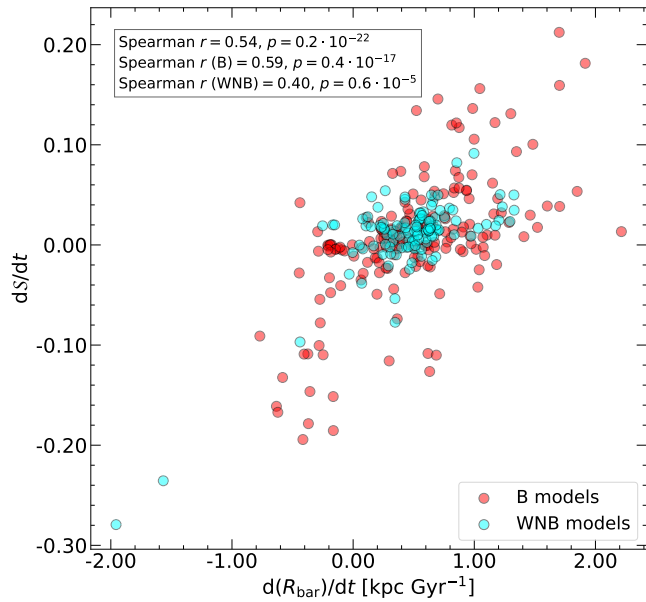


Figure 14. Rate of growth of the shoulder strength (excess mass fraction), dS/dt versus rate of growth of the bar radius, dR_{bar}/dt , for all models. Red points are B models, cyan points are WNB models. Transients are excluded. To reduce noise, we average over four time steps. Spearman rank correlation coefficients and associated p -values are shown in the annotation.

Models 5 and T4 may be exhibiting this behaviour after their second buckling. Shoulder dissolution therefore, may either be temporary or long lasting.

Secondary buckling is not the only way shoulders dissolve. In models HD2 at $t \sim 7.5$ (Fig. 7) and PBG2 at $t \sim 2.5$ Gyr (Fig. 8), persistent shoulders dissolve without buckling. In these cases, we have verified that shoulder dissolution occurs via strong spirals perturbing the ends of the bar, disrupting its morphology and reducing its size.

Model T6 has no shoulders detected by the SRA, before or after buckling, in contrast with model T4, which has a similar bar radius evolution. While close inspection of model T6 reveals hints of shoulders near the end of the bar at ~ 3 Gyr, this is below our chosen detection threshold ($T \sim 0.5$ versus the threshold 0.4, so they are very weak), persisting until ~ 5.5 Gyr. The difference between models T4 and T6 appears to be caused by the thicker disk of T6 relative to T4 (median $|z| = 0.26$ versus 0.10 kpc at $t = 0$, respectively). As such, there is more material at large heights above the bar, which dilutes any shoulders that would form from recent trapping.

6 OBSERVATIONAL CONSIDERATIONS

6.1 Shoulders in projection

We now explore whether projection affects the recognition and observed properties of shoulders. We examine model 2 at various inclinations $i < 60^\circ$ and relative bar position angles ΔPA . The SRA recognises shoulders for every combination of i and ΔPA , implying that shoulders, if they exist, would be observed at all inclinations up to $\sim 60^\circ$. For example, Fig. 17 shows the model and shoulder detection for $i = 60^\circ$ at $t = 5$ Gyr (when the BP bulge and face-on shoulders are well established), for various bar position angles. [Erwin & Debattista \(2013\)](#) showed that moderately inclined galaxies with

a BP bulge have isophotes with a boxy inner part from the thickened portion of the bar, accompanied by spurs. They also showed that when the bar’s position angle is beyond $\sim 50^\circ$ from the major axis, such a morphology may not be apparent. Fig. 17 shows that in such cases, the shoulders are still recognised.

In contrast, model 2S with a spinning halo does not manifest shoulders at any time step. Fig. 18 shows the model and shoulder detection for $i = 60^\circ$ at $t = 5$ Gyr, with the first column showing the face-on projection. Shoulders are not recognised at any combination of i and ΔPA .

Fig. 19 shows the ratios of inclined to face-on values for some of the observable shoulder parameters, when viewed in projection. Most parameters are not substantially ($\gtrsim 15\%$) affected. However, a (*i.e.* flatness, top left panel) is strongly affected, and this parameter determines whether a shoulder is recognised. Values less than 1 indicate that a shoulder becomes flatter, and greater than 1 indicate that it becomes steeper, *i.e.* less shoulder-like. For higher i and smaller ΔPA ($\lesssim 30^\circ$), shoulder profiles become flatter. For higher ΔPA , shoulder profiles appear less flat – potentially resulting in them disappearing altogether if they are intrinsically weak. Some caution is therefore needed when interpreting flat bar profiles in projection.

6.2 Buckling bars and shoulders

[Erwin & Debattista \(2016\)](#) presented the first direct detection of buckling bars, in NGC 4569 and NGC 3227 through examination of their isophotes. Using simulations, they noted that buckling galaxies are expected to exhibit spurs offset on the same side of the projected major axis, together with trapezoidal, rather than boxy, inner isophotes (their Fig. 2). Fig. 20 shows the surface brightness profile along the bar major axis (on the sky, not deprojected) of NGC 4569 ($i = 69^\circ$, $\Delta\text{PA} = 26^\circ$). It is a system with shoulders within the bar (albeit with significant star formation contaminating the $x > 0$ profile). Is it possible to have both the isophotal morphology of buckling and shoulders?

Fig. 21 demonstrates that it is indeed possible: we show model 4 shortly after peak buckling, at $t = 4.2$ Gyr, rotated to the same orientation as NGC 4569. The model presents the same isophotal morphology as NGC 4569, and the SRA recognises shoulders in this projected profile. We find a similar signal in model 3, and in models 5 and T1 during their second bucklings (for a short time before the shoulders dissolve), but not their first. Thus, the models are consistent with those of NGC 4569, and the coexistence of shoulders and buckling does not necessarily imply a second buckling.

7 IMPRINT OF SHOULDER-SUPPORTING ORBITS

To explore the types of orbits that support shoulders (a more in depth study will be presented in [Beraldo e Silva et al., in prep.](#)), we extract the particles within the shoulder region (*i.e.* from inner to outer shoulder edges for both $x < 0$ and $x > 0$, and $|y| < 1$ kpc) for three models at times when the shoulders are well developed. Fig. 22 shows their surface density in the (x, y) -plane at the selection time, and at a later time (but when the shoulders are still present). Although we can see a low density of particles outside of the shoulders (blue areas – these particles happened to have been located in the shoulder area when the source cut was taken), the distributions overall resemble looped x_1 orbits. They have apocentres in the shoulder area, and clearly avoid the centre (we have verified that the shoulder-supporting morphology is not a consequence of our choice of ‘slit width’ in the major-axis cut, $|y| < 1$ kpc, by repeating our analysis

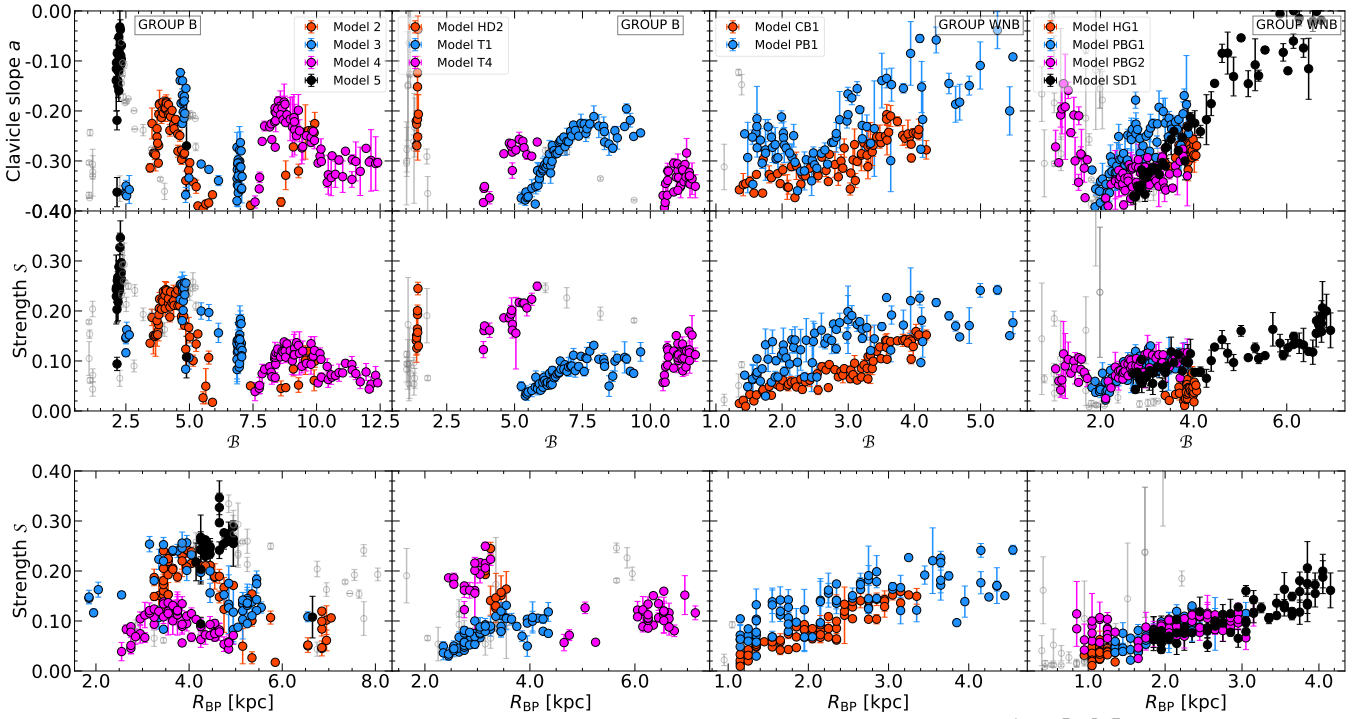


Figure 15. Plots of shoulder strength and slope with BP bulge strength, \mathcal{B} , and radial extent, R_{BP} . Transient shoulders, and periods of decline during secondary buckling, are shown with grey symbols to focus on periods of steady shoulder growth.

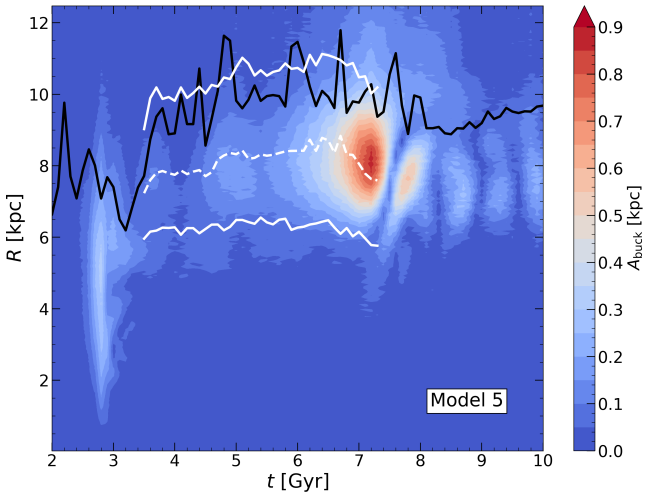


Figure 16. Evolution of A_{buck} (by cylindrical R) for model 5 from $t = 2$ Gyr. The black line represents the bar radius, the white dashed line represents the outer edge of the clavicle and the two solid white lines represent the location of the inner and outer edges of the shoulder. A second buckling tends to occur in the shoulder region and destroys the shoulder.

with significantly larger and smaller slits). This morphology is not seen for particles in cuts outside the shoulders. This is consistent with the evolution of the elongation of orbits of particles destined to be in the shoulders discussed in Section 4.3.5.

Tracking the particles further, the lower right pair of plots in Fig. 22 shows that, with time, the morphology of the shoulder particles ‘smears out’ when viewed in the (x, y) -plane. Therefore given

enough time, stars initially on shoulder orbits evolve into librating box-like orbits, reducing their support of the shoulder morphology. This in turn requires that, for shoulders to persist long term, the bar must continuously capture additional material onto such looped orbits, and the bar must continue to grow.

In Fig. 23, we show particles in the shoulders from model 5 at a time before the second buckling (second column) and the same particles after the shoulders have been destroyed by the second buckling (third column). In the third column we also plot (dashed red line) the major axis density from the second column for comparison. We see hints of changes in morphology; the particles do not avoid the centre as much, have a more diffuse, ‘box-like’ shape, and are less extended along y for $|x| \leq 3$ kpc. They are also less radially extended. The mass ‘smears out’ both towards the centre and, at the end of the loops, along the y direction. So the density profile becomes more uniform along the major axis, for particles which were previously concentrated in the loops (dashed red line). The second buckling drives the x_1 orbits out of the plane, and this also changes their projected morphology (e.g. Figure 8 in Lokas 2019), diluting the overdensity. Since the second buckling prevents the bar from growing (temporarily in some models), and therefore renders it unable to capture additional particles from the periphery of the disc into the looped orbits, this transformation weakens and ultimately dissolves the shoulders, returning the bar profile to exponential. Furthermore, as discussed above, R_{CR} increases in time, so a relative lack of material outside R_{CR} after the second buckling may also contribute to the inability to quickly reform shoulders.

The last two columns of Fig. 23 show particles in model CB2’s very weak shoulders at 0.9 Gyr (we consider these to be transients). We see a diffuse shape and a reduced extension along y for $|x| \leq 3$ kpc at 2.2 Gyr. The plots beneath each (x, y) -plane panel show the major axis profiles for the selected particles and confirm this visual

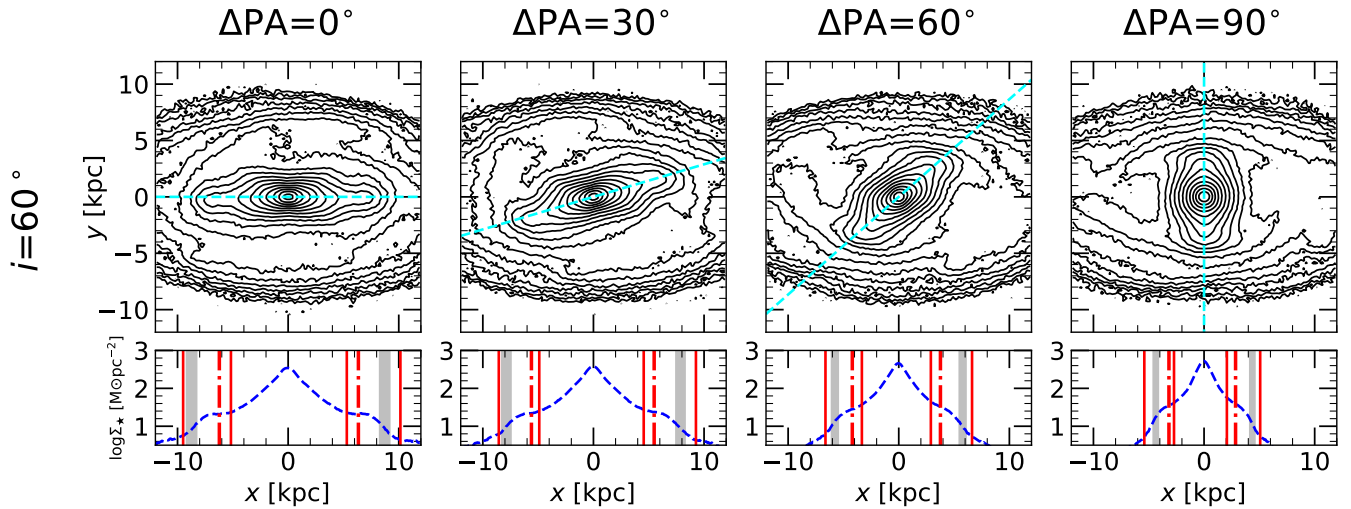


Figure 17. Surface density contours in the projected (x, y) -plane for model 2 at $t = 5$ Gyr. The model has been rotated to inclination $i = 60^\circ$ and intrinsic bar position angles $\Delta\text{PA} = 0^\circ, 30^\circ, 60^\circ$ and 90° . Within each panel, the dashed cyan line represents the bar's projected major axis. Beneath each (x, y) panel is the logarithmic surface density (in arbitrary units) along the bar's projected major axis (projected $|y| \leq 1$ kpc). The grey area represents the projected bar's radial extent. In all cases, the SRA recognises shoulders; the vertical dot-dashed lines represent the clivale centres and the vertical red lines mark the inner and outer boundaries of the shoulders.

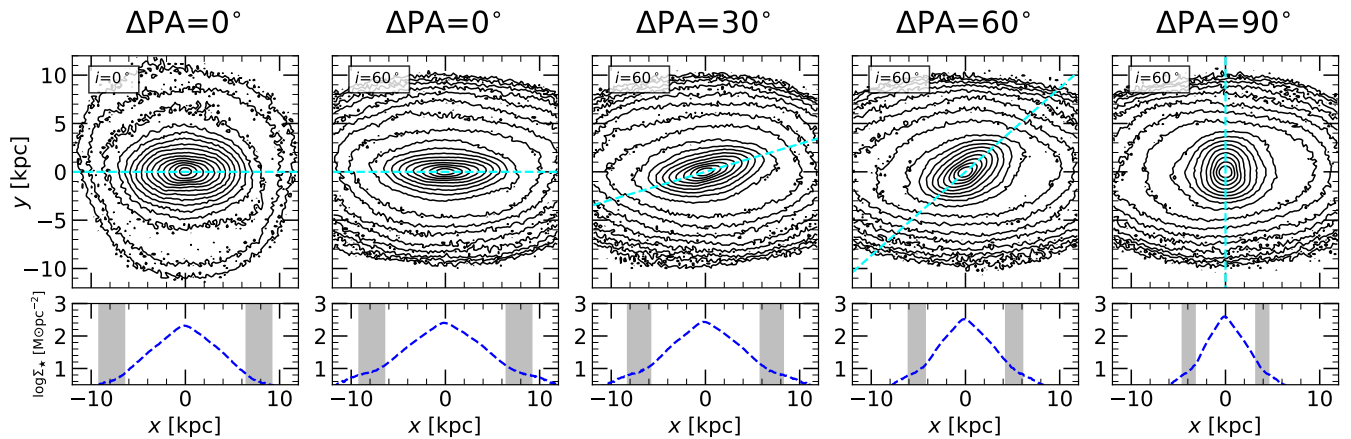


Figure 18. Surface density contours in the projected (x, y) -plane for model 2S at $t = 5$ Gyr. The first column shows the face on projection. In the remaining columns, the model has been rotated to inclination $i = 60^\circ$ and intrinsic bar position angles $\Delta\text{PA} = 0^\circ, 30^\circ, 60^\circ$ and 90° . Within each panel, the dashed cyan line represents the projected bar's major axis. Beneath each (x, y) panel is the logarithmic surface density (in arbitrary units) along the projected major axis (projected $|y| \leq 1$ kpc). The grey area represents the projected bar radius. The SRA does not recognise shoulders at any bar position angle.

impression. Weak or dissolved shoulders appear to be supported by more box-like, diffuse orbits.

In their study of orbital support of bars, [Smirnov et al. \(2021\)](#) found that as the central concentration of their models increased, so did the percentage of x_1 orbits. We note that the B models reach a higher maximum shoulder strength on average than the WNB models (median $S_{\text{max}} = 0.25$ and 0.16 , respectively). Recall that the WNB models are more centrally concentrated than the B models. This would intuitively lead one to expect stronger, not weaker shoulders in the WNB models, in contradiction to our findings. However, the authors do not distinguish between x_1 orbits in general, and those having loops, so a direct comparison is difficult.

8 DISCUSSION

8.1 Shoulders as a manifestation of bar growth

A key insight of this work is that shoulders are a manifestation of the bar's secular growth. The simulations with prograde spinning haloes (Fig. 8) show that shoulders do not form if the bar is unable to grow. Since bars do not form with shoulders in place, shoulders are not part of the bar instability itself, but rather appear if the bar grows. Section 4.4.1 shows that shoulders end just outside the bar radius, with a relatively small variation in $R_{\text{sh}}/R_{\text{bar}}$ ($\sigma \sim 5\%$ of the mean), showing that the shoulder edge tracks the end of the bar rather closely.

Fig. 12 shows that shoulders typically become flatter as they evolve.

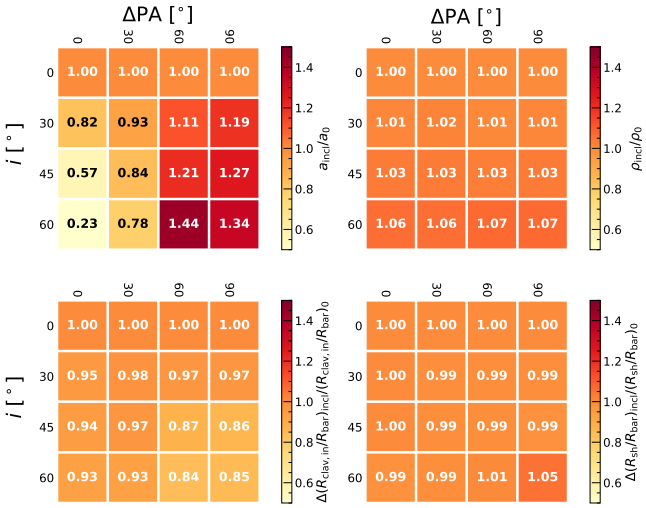


Figure 19. Inclined (subscript ‘incl’) to face on (subscript ‘0’) ratios for observable shoulder parameters for model 2 at $t = 5$ Gyr. The model has been rotated to different inclinations, i , and intrinsic bar position angles, ΔPA , as indicated. Top panel, left to right: slope α , ratio of peak to clavicle logarithmic surface density ρ . Lower panel, left to right: $R_{\text{clav,in}}/R_{\text{bar}}$, $R_{\text{sh}}/R_{\text{bar}}$.

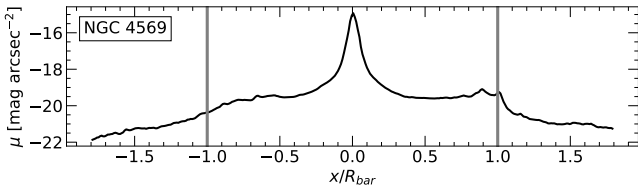


Figure 20. The major axis surface brightness profile in the *Spitzer* IRAC $3.6\mu\text{m}$ band for NGC 4569 (Kennicutt et al. 2003), which is currently buckling. The major axis has been scaled to the bar radius R_{bar} and the thick vertical grey lines mark the size of the bar.

This is not a general rule, however: models 3 and 4 undergo periods of weakening, and model PBG2 shows no strong growth trend. Furthermore, the data include episodes of steepening (*i.e.* becoming less shoulder-like) during secondary buckling and periods of spiral interference. Fig. 13 shows that for many models, in general the stronger and longer the bar, the stronger and flatter becomes the shoulder. This is consistent with Kim et al. (2015) who found that longer bars tend to show flatter profiles (defined by the Sérsic index of the bar profile) in their sample of 144 face-on barred galaxies.

However, Figs. 12 and 13 also show that it is not possible to use the observed profile flatness alone to determine the age of a bar, despite the general evolutionary trend towards flattening. The rate at which the slope flattens varies considerably between the models, and the decrease in slope is not monotonic in time (Fig. 12) or as the bar strengthens (Fig. 13). Furthermore, the dissolution of shoulders via secondary buckling and the profile’s subsequent return to exponential (grey markers in Figs. 12 and 13) bolsters the argument that exponential profiles are not necessarily indicators of young bars. We conclude that the flatness of the bar’s profile cannot be used as a chronometer, as suggested by Kim et al. (2015).

Buckling is preceded by a reduction in $\beta = \sigma_z/\sigma_R$, the ratio of the stellar vertical to radial velocity dispersions, to ~ 0.5 (Sellwood 1996). We have confirmed that β along the bar’s major axis declines

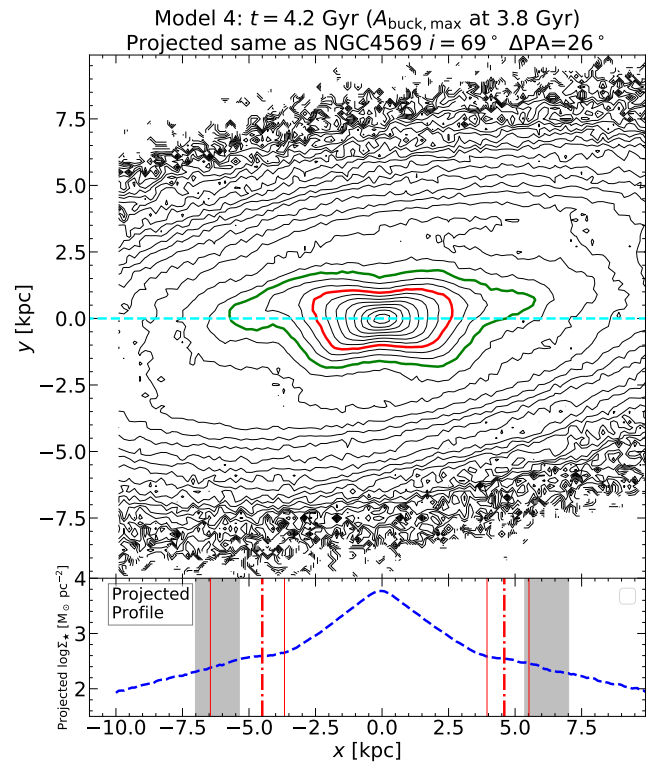


Figure 21. Upper panel: $\log \Sigma_{\star}$ density contours in the projected (x, y) -plane for model 4 during its buckling at time $t = 4.2$ Gyr, 0.4 Gyr after maximum A_{buck} . The model has been rotated to match the inclination and bar relative position angle of NGC 4569. The dashed cyan line represents the projected bar’s major axis, which has been rotated to lie along the projected x -axis. A sample trapezoidal inner isodensity contour is shown in red, and in green is a contour with spurs offset on the same side of the major axis; these are the observational signatures of a buckling bar. Lower panel: $\log \Sigma_{\star}$ along the projected bar major axis, x (projected $|y| \leq 1$ kpc). The grey area represents the projected bar radius, the vertical dot-dashed lines represent the clavicle centres as identified by the SRA, and the thin vertical red lines mark the boundaries of the shoulders.

before the first buckling. In our models, as was seen in simulations by Lokas (2019), the trigger value is closer to 0.6. Buckling is followed immediately by a rise in β in the buckled region. As the bar continues to grow post buckling, an increase in anisotropy (a renewed reduction in β) is seen in the shoulder region, as orbits of newly trapped particles become radially elongated (Figs. 10, 22). The increase is focused in the shoulder region since this is the location of highest σ_R . For the models which undergo a second buckling, β eventually reaches ~ 0.6 in the shoulders once more, leading to buckling in this region, which destroys the shoulders (followed again by an immediate rise in β). So bar growth triggers both shoulder formation and eventually secondary buckling.

Persistent shoulders are often, but not always, accompanied by a BP. So a BP can be present without accompanying shoulders, perhaps for them only to emerge after a considerable time (*e.g.* model T1 which forms a BP ~ 2 Gyr before shoulders appear). In other models, particularly many of the WNB ones, shoulders appear before a BP. The spread in the ratio of shoulder edge to BP radius is twice that with the respect to the bar radius (Section 4.4.1); thus shoulders track the bar radius rather than the BP bulge radius. It appears that

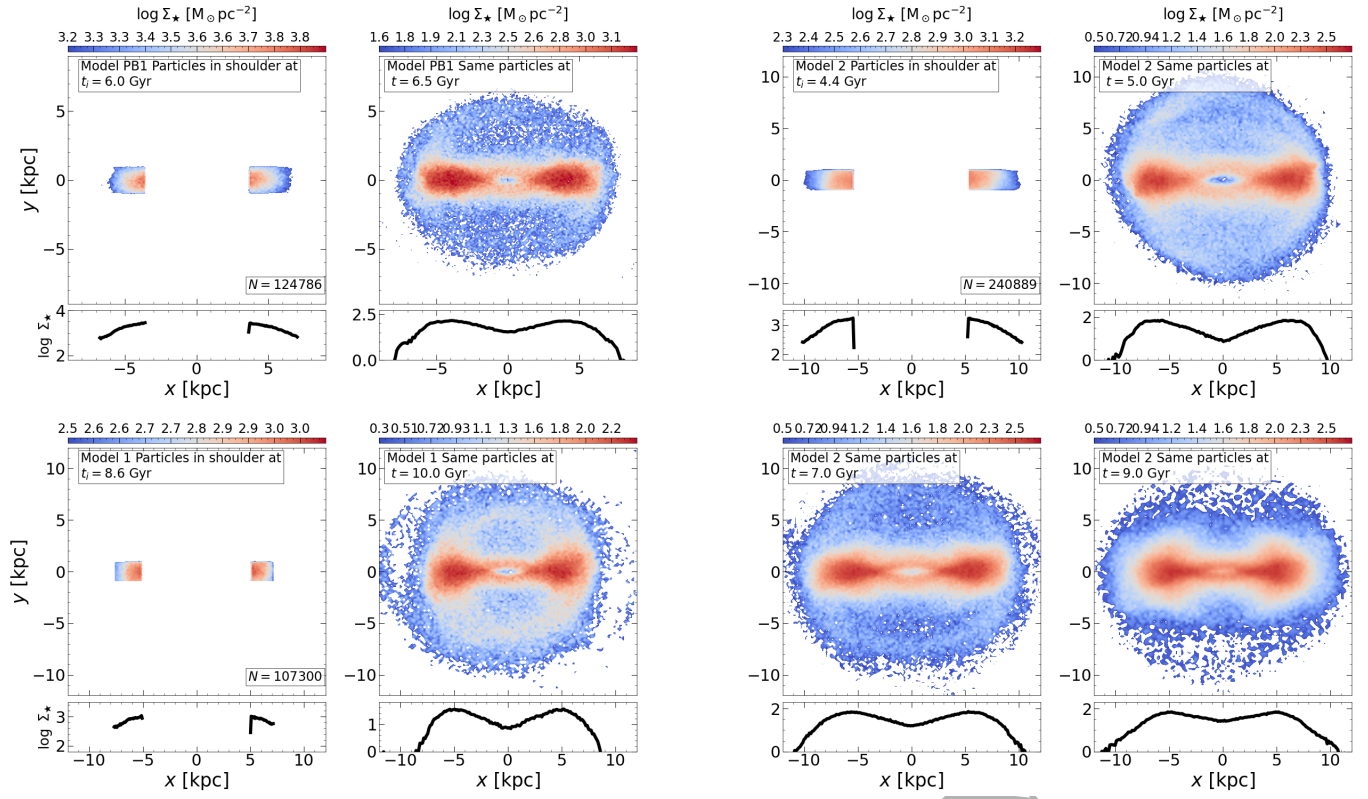


Figure 22. Surface density in the (x, y) -plane at times indicated in the annotations in each panel, for those particles located within the shoulders at an earlier time step t_i . Within each pair of plots (except the pair at lower right), the left plot shows the particles in the shoulder at t_i , and the number of particles is indicated in the lower right of each panel (N). The right plot shows the same particles later in the model’s evolution. Beneath each panel we show $\log \Sigma_\star$ for the particles along the major axis ($|y| \leq 1$ kpc). Note the different scales on the plots. The pair at lower right show the particles for model 2 at $t_i = 4.4$ Gyr, but at later times 7 and 9 Gyr. The plots show the loop-like morphology of the underlying orbits, and the lower right pair shows how the orbits of a given set of shoulder particles tend to librate in time, diluting these particles’ contribution to the shoulders.

both shoulders and BPs – although both trace bar growth – form independently.

8.2 Orbital support

x_1 orbits are those primarily responsible for supporting the bar and have been the subject of many studies (see [Contopoulos & Papayannopoulos 1980](#); [Sellwood & Wilkinson 1993](#); [Binney & Tremaine 2008](#)). Fig. 22 suggests that stars lingering in the looped region of x_1 orbits are responsible for the shoulders. [Contopoulos \(1988\)](#) found that x_1 orbits with loops appeared when the potential was strongly barred, and [Athanasoula \(1992\)](#) found the same in her models with high quadrupole moment. [Valluri et al. \(2016\)](#) discuss examples of x_1 orbits, one or two of which qualitatively resemble the shoulder-supporting morphology (their Fig. 4). They are not part of the backbone of the BP structure, being located near the ends of the bar ([Gajda et al. 2016](#); [Parul et al. 2020](#)), which is near the outer edge of the shoulder structure (Fig. 2). Hence we expect BPs and shoulders to develop independently despite them both being impacted by bar growth.

As we have shown in Fig. 23, shoulder dissolution appears to transform these orbits, possibly into box orbits librating about the x_1 orbits. The buckling prevents the bar from growing (temporarily), and therefore renders it unable to capture additional particles into resonant looped x_1 orbits. Once the orbits already in the shoulder

have evolved into more box-like orbits, the shoulder morphology is no longer supported and the bar profile becomes exponential once more, until fresh stars are trapped onto x_1 orbits.

We also note that the location of the inner limit of the shoulder in almost all models moves outwards as the bar evolves (Figs. 7, 8). This also supports the notion that the particles trapped into shoulder orbits over time evolve away from looped x_1 orbits, into more uniform box-like orbits ([Łokas 2019](#)), thus eliminating the overdensity in that part of the bar as it continues to grow outwards.

8.3 Summary

We have used isolated galaxy simulations (16 collisionless N -body and three with gas and star formation) to study the outer regions of galactic bars, where the surface density profile along the bar major axis becomes shallow (or ‘flat’) and then breaks to a steep falloff, a pattern we term ‘shoulders’. Our main results are:

- (i) Shoulders form as part of the bar’s secular evolution – they are a sign of a growing bar. They are not present when a bar first forms, and do not subsequently appear if a bar does not grow after formation (see Section 8.1).
- (ii) In many models, the strength and flatness of the shoulders increase as the bar evolves (although not monotonically). Most of our models are consistent with the observational findings of [Kim](#)

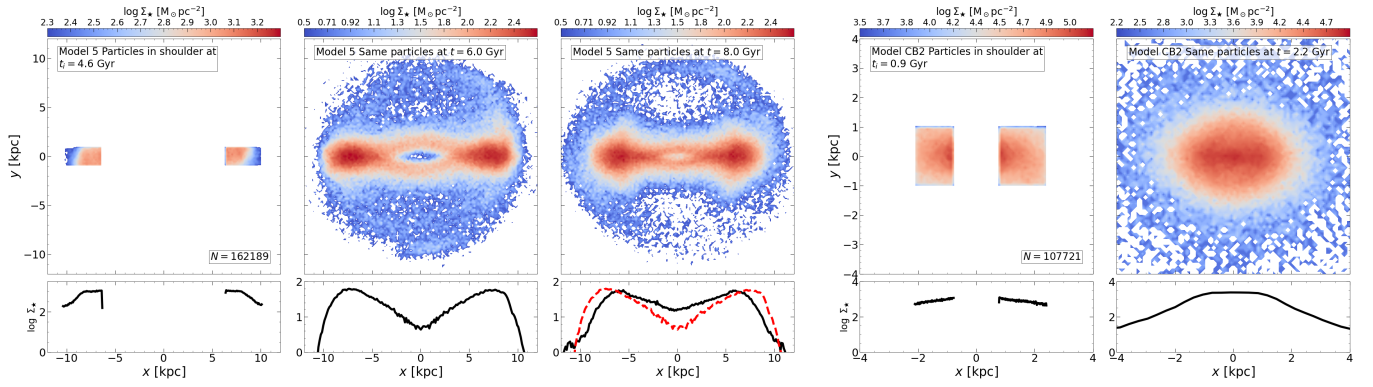


Figure 23. As for Fig. 22, but now showing (first three columns) the effect of second buckling and (last two columns) the case of a very weak shoulder. First column: particles in the shoulder at t_i for model 5 (after first buckling). Second and third columns: model 5 shoulder particles at 6 and 8 Gyr, respectively, the latter being 1 Gyr after the second buckling. Fourth and fifth columns: shoulder particles for (non-buckling) model CB2, where the shoulders are extremely weak and we consider them to be transients. In the lower panels we show the major axis density profiles, and in the third column we repeat that for $t = 6$ Gyr in red for comparison.

et al. (2015) that stronger and longer bars have flatter profiles (see Section 4.4).

(iii) Shoulders often – but not always – appear alongside a BP. Some models take a considerable time after BP formation before shoulders emerge and in some models, shoulders appear before a BP, so they are independent tracers of a growing bar. In non-buckling models, stronger and radially larger BP bulges are accompanied by stronger, flatter shoulders (see Section 4.4.3).

(iv) Secondary buckling dissolves shoulders, either temporarily or longer term (depending on how effectively the bar captures additional material afterwards), returning the bar to an exponential profile without significantly weakening it. Strong spirals perturbing the bar can have the same effect. A thick disc can mask shoulders owing to significant mass being present at large heights. This destruction, the large variety of flattening rates of the bar as it evolves, and the fact that the shoulder growth is not monotonic, means that it is not possible to use the flatness of a bar’s profile in a simple way to determine its age. Notably, an exponential bar profile is not necessarily an indication of a young bar (see Sections 5, 8.1).

(v) For models with both BPs and shoulders, face-on shoulders are evident in projection, even though a ‘box+spurs’ morphology in the (x, y) -plane isophotes (a BP bulge indicator) may not be. The shoulder slope is strongly affected by projection, particularly at $i \gtrsim 45^\circ$. Caution is therefore urged when observing flat bar profiles in projection (see Section 6).

(vi) We showed evidence hinting that shoulders are the manifestation of particles being trapped by the growing bar around looped x_1 orbits, where the time spent at apogalacticon results in the overdensity in the shoulder region. In time, these orbits transform, probably into librating boxes, so more material must be trapped for the shoulders to persist.

(vii) We have verified that our conclusions are consistent with results from the fully self-consistent star forming model, and so are not peculiar to the collisionless models (see Section 4.3.6).

9 ACKNOWLEDGEMENTS

VPD and LBS are supported by Science and Technology Facilities Council Consolidated grant ST/R000786/1. DJL was supported for part of this project by UCLan UURIP summer internships in

2020 and 2021. The simulations were run at the High Performance Computing Facility of the University of Central Lancashire and at the DiRAC Shared Memory Processing system at the University of Cambridge, operated by the COSMOS Project at the Department of Applied Mathematics and Theoretical Physics on behalf of the STFC DiRAC HPC Facility (www.dirac.ac.uk). This equipment was funded by BIS National E-infrastructure capital grant ST/J005673/1, STFC capital grant ST/H008586/1 and STFC DiRAC Operations grant ST/K00333X/1. DiRAC is part of the National E-Infrastructure. We thank the anonymous referee for a careful reading of the manuscript, and for suggestions which improved the paper.

The analysis in this paper made use of the PYTHON packages NUMPY, SCIPY and PYNBODY (Van Der Walt et al. 2011; Virtanen et al. 2020; Pontzen et al. 2013). Figures were produced using the PYTHON package MATPLOTLIB (Hunter 2007).

DATA AVAILABILITY

The simulations used in this paper may be shared on reasonable request to V.P.D. (vpdebattista@gmail.com).

REFERENCES

- Aguerri J. A. L., Muñoz-Tuñón C., Varela A. M., Prieto M., 2000, *A&A*, **361**, 841
 Aguerri J. A., Méndez-Abreu J., Corsini E. M., 2009, *A&A*, **495**, 491
 Athanassoula E., 1992, *MNRAS*, **259**, 328
 Athanassoula E., 2002, *ApJ*, **569**, L83
 Athanassoula E., 2003, *MNRAS*, **341**, 1179
 Athanassoula E., 2005, *MNRAS*, **358**, 1477
 Athanassoula E., Beaton R. L., 2006, *MNRAS*, **370**, 1499
 Athanassoula E., Misiriotis A., 2002, *MNRAS*, **330**, 35
 Athanassoula E., Machado R. E., Rodionov S. A., 2013, *MNRAS*, **429**, 1949
 Berentzen I., Shlosman I., Martínez-Valpuesta I., Heller C. H., 2007, *ApJ*, **666**, 189
 Binney J., Tremaine S., 2008, *Galactic Dynamics: Second Edition*. ISBN 978-0-691-13026-2 (HB). Published by Princeton University Press, Princeton, NJ USA, 2008.
 Bullock J. S., Dekel A., Kolatt T. S., Kravtsov A. V., Klypin A. A., Porciani C., Primack J. R., 2001, *ApJ*, **555**, 240
 Bureau M., Athanassoula E., 2005, *ApJ*, **626**, 159

- Bureau M., Freeman K. C., 1999, *AJ*, **118**, 126
- Bureau M., Aronica G., Athanassoula E., Dettmar R.-J., Bosma A., Freeman K. C., 2006, *MNRAS*, **370**, 753
- Butterworth S., 1930, *Experimental Wireless and the Wireless Engineer*, 7, 536
- Cole D. R., Debattista V. P., Erwin P., Earp S. W. F., Roškar R., 2014, *MNRAS*, **445**, 3352
- Collier A., S. I., Heller C., 2018, *MNRAS*, **476**, 1331
- Combes F., Elmegreen B., 1993, *A&A*, **271**, 391
- Combes F., Debbasch F., Friedli D., Pfenniger D., 1990, *A&A*, **233**, 82
- Contopoulos G., 1988, *A&A*, **201**, 44
- Contopoulos G., Papayannopoulos T., 1980, *A&A*, 92, 33
- D'Onofrio M., Capaccioli M., Merluzzi P., Zaggia S., Boulesteix J., 1999, *A&AS*, 134, 437
- Debattista V. P., Sellwood J. A., 2000, *ApJ*, **543**, 704
- Debattista V. P., Carollo C. M., Mayer L., Moore B., 2004, *ApJ*, **604**, L93
- Debattista V. P., Carollo C. M., Mayer L., Moore B., 2005, *ApJ*, **628**, 678
- Debattista V. P., Mayer L., Carollo C. M., Moore B., Wadsley J., Quinn T., 2006, *ApJ*, **645**, 209
- Debattista V. P., Ness M., Gonzalez O. A., Freeman K., Zoccali M., Minniti D., 2017, *MNRAS*, **469**, 1587
- Debattista V. P., Liddicott D. J., Khachaturyants T., Beraldo e Silva L., 2020, *MNRAS*, **498**, 3334
- Deg N., Widrow L. M., Randriamampandry T., Carignan C., 2019, *MNRAS*, **486**, 5391
- Diáz-García S., Salo H., Laurikainen E., 2016, *A&A*, **596**, 1
- Elmegreen D. M., 1996, *ASP Conference Series*, 91
- Elmegreen B., Elmegreen D., 1985, *ApJ*, **288**, 438
- Elmegreen D., Elmegreen B., Al E., 1996a, *AJ*, **111**, 1880
- Elmegreen B. G., Elmegreen D. M., Chromey F. R., Hasselbacher D. A., Bissell B. A., 1996b, *AJ*, **111**, 2233
- Elmegreen D. M., et al., 2011, *ApJ*, **737**, 32
- Erwin P., 2005, *MNRAS*, **364**, 283
- Erwin P., 2018, *MNRAS*, **474**, 5372
- Erwin P., 2019, *MNRAS*, **489**, 3553
- Erwin P., Debattista V. P., 2013, *MNRAS*, **431**, 3060
- Erwin P., Debattista V. P., 2016, *ApJ*, **825**, L30
- Erwin P., Pohlen M., Beckman J. E., 2008, *AJ*, **135**, 20
- Eskridge P. B., et al., 2000, *AJ*, **119**, 536
- Foyle K., Courteau S., Thacker R. J., 2008, *MNRAS*, **386**, 1821
- Fragkoudi F., Di Matteo P., Haywood M., Gómez A., Combes F., Katz D., Semelin B., 2017, *A&A*, **606**, A47
- Freeman K. C., 1970, *ApJ*, **160**, 811
- Gajda G., Lokas E. L., Athanassoula E., 2016, *ApJ*, **830**, 108
- Gardner E., Debattista V. P., Robin A. C., Vásquez S., Zoccali M., 2014, *MNRAS*, **438**, 3275
- Hartmann M., Debattista V. P., Cole D. R., Valluri M., Widrow L. M., Shen J., 2014, *MNRAS*, **441**, 1243
- Hunter J. D., 2007, *Computing in Science & Engineering*, 9, 90
- Iannuzzi F., Athanassoula E., 2015, *MNRAS*, **450**, 2514
- Jetley P., Gioachin F., Mendes C., Kale L., Quinn T. R., 2008, in *Proceedings of IEEE International Parallel and Distributed Processing Symposium 2008*.
- Jetley P., Wesolowski L., Gioachin F., Kale L., Quinn T. R., 2010, in *Proceedings of the 2010 ACM/IEEE International Conference for High Performance Computing, Networking, Storage and Analysis, SC 2010*, Washington, DC, USA, 2010. IEEE Computer Society.
- Kennicutt Jr. R. C., et al., 2003, *PASP*, **115**, 928
- Kent S. M., 1987, *AJ*, **93**, 816
- Kim T., et al., 2015, *ApJ*, **799**, 99
- Kormendy J., Kennicutt R. C., 2004, *ARAA*, **42**, 603
- Kuijken K., Dubinski J., 1995, *MNRAS*, **277**, 1341
- Lokas E. L., 2019, *A&A*, **629**, A52
- Long S., Shlosman I., Heller C., 2014, *ApJ*, **783**, 18
- Lucatelli G., Ferrari F., 2019, *MNRAS*, **489**, 1161
- Lütticke R., Dettmar R.-J., Pohlen M., 2000, *A&AS*, **145**, 405
- Martinez-Valpuesta I., Shlosman I., 2004, *ApJ*, **613**, L29
- Menendez-Delmestre K., Sheth K., Schinnerer E., Jarrett T. H., Scoville N. Z., 2007, *ApJ*, **657**, 790
- Menon H., Wesolowski L., Zheng G., Jetley P., Kale L., Quinn T., Governato F., 2015, *Computational Astrophysics and Cosmology*, **2**, 1
- Michel-Dansac L., Wozniak H., 2006, *A&A*, **452**, 97
- Noguchi M., 1996, *ApJ*, **469**, 605
- Parul H. D., Smirnov A. A., Sotnikova N. Y., 2020, *ApJ*, **895**, 12
- Petersen M., Weinberg M., Katz N., 2014, in *ASP Conf. Ser. 480: Structure and Dynamics of Disk Galaxies*, ed. Mark S. Seigar & Patrick Treuthardt (San Francisco: ASP).
- Pontzen A., Roškar R., Stinson G. S., Woods R., Reed D. M., Coles J., Quinn T. R., 2013, *pynbody: Astrophysics Simulation Analysis for Python*
- Quillen A. C., 2002, *AJ*, **124**, 722
- Raha N., Sellwood J. A., James R. A., Kahn F. D., 1991, *Nature*, **352**, 411
- Regan M., Elmegreen D. M., 1997, *AJ*, **114**, 965
- Schwarz M. P., 1984, *MNRAS*, **209**, 93
- Seigar M. S., James P. A., 1998, *MNRAS*, **299**, 672
- Sellwood J. A., 1996, *ApJ*, **473**, 733
- Sellwood J. A., Gerhard O., 2020, *MNRAS*, pp 3175–3193
- Sellwood J. A., Wilkinson A., 1993, *Reports of Progress in Physics*, **56**, 173
- Seo W.-Y., Kim W.-T., Kwak S., Hsieh P.-Y., Han C., Hopkins P. F., 2019, *ApJ*, **1**, 5
- Shen S., Wadsley J., Stinson G., 2010, *MNRAS*, **407**, 1581
- Sheth K., et al., 2010, *PASP*, **122**, 1397
- Smirnov A. A., Sotnikova N. Y., 2019, *MNRAS*, **485**, 1900
- Smirnov A. A., Tikhonchenko I. S., Sotnikova N. Y., 2021, *MNRAS*, **502**, 4689
- Sotnikova N., Rodionov S., 2005, *AstL*, **31**, 15
- Sparke L. S., Sellwood J. A., 1987, *MNRAS*, **225**, 653
- Tsikoudi V., 1980, *A&AS*, **43**, 365
- Valenzuela O., Klypin A., 2003, *MNRAS*, **345**, 406
- Valluri M., Shen J., Abbott C., Debattista V. P., 2016, *ApJ*, **818**, 141
- Van Der Walt S., Colbert S. C., Varoquaux G., 2011, *Computing in Science & Engineering*, **13**, 22
- Virtanen P., et al., 2020, *Nature Methods*, **17**, 261
- Wadsley J. W., Stadel J., Quinn T., 2004, *New Astronomy*, **9**, 137
- Wakamatsu K.-I., Hamabe M., 1984, *ApJ*, **56**, 283
- Weinberg M. D., 1985, *MNRAS*, **213**, 451
- Widrow L. M., Dubinski J., 2005, *ApJ*, **631**, 838
- Widrow L. M., Pym B., Dubinski J., 2008, *ApJ*, **679**, 1239