

Current Situation and Activating Scheme of Regional Construction Industry

© 2001,

2001-22

Current Situation and Activating Scheme of Regional Construction Industry

●

· ·

■

■

■

■

■

■

■



·
·
·

()

()

· ()

2001-22 ·

· 2-22 / · 2001 12 28 / · 2001 12 31
· 031-380-0426() 031-380-0114() / · 031-380-0474
1591-6 (431-712)
· 6,000 / ISBN · 89-8182-168-2-93300
<http://www.krihs.re.kr>

©2000,

*



8 IMF

가 ,

가

.가

가

가

1997

2000

가 70%

60%

가

가

.WTO 가

UR

, 가 .
 . ,
가 .
가 .
 , .
 ,
 .

2001 12



가 , .
. IMF ,

가
.

가
.
.
.

MRIO .

2

.

2

, 3

.

, SOC

.

3

3

.
가

,

, PQ

가 ,

MRIO

.

MRIO

가

1998

47 6,172 .

가

가

47 621 .

38 .

38 .

38

가

4

4

,

가

2000

85.3%

62.4%

1999

2000

88.2%

(105.7%)

61.6%

가

가

가 가

가

100

가

가

가

5

5

가

가

6

6

가

가

,

SOC

SOC

가

가

WTO 가

가

가

PQ

가,

가

가

가

가

가

가

가 ‘

가 ‘



.....	i
.....	iii

1

1.	1
2.	2
3.	3
4.	5

2

1.	9
2.	10
1)	10
2)	11
3.	14
1)	14
2)	15
3)	18
4.	20

3

1. 23

1) 23

2) 24

3) 25

4) 27

5) PQ 28

6) 30

2. MRIO 31

1) 31

2) 33

3) () 35

4) MRIO 37

4

1. 39

1) 39

2) 42

3) 가 45

4) 48

2. 가 51

1) 51

2) 57

3) 58

3. 60

1) 61

2) 67

4. 74

1) 74

2) GRDP 77

5

1. 81

2. : 83

3. : 90

4. : 92

5. : , , 98

1) 98

2) 103

6. 105

6

1. 109

1) 109

2) 110

2. 111

1) 111

2) 112

3. 116

1) 116

2) • 121

4. 124

1) 124

2) 125

7

..... 135

..... 141

SUMMARY 143

..... 147



< 2-1> 1998	11
< 2-2>	12
< 2-3>	15
< 2-4>	17
< 2-5>	18
< 3-1>	25
< 3-2>	26
< 3-3> 2000	27
< 3-4>	가	29
< 3-5>	가	30
< 3-6>	()	30
< 3-7>	36
< 4-1>	41
< 4-2>	44
< 4-3>	가	47
< 4-4>	49
< 4-5>	53
< 4-6>	54
< 4-7>	55
< 4-8>	56
< 4-9>	57

< 4- 10>	(2000)	59
< 4- 11>		61
< 4- 12>		63
< 4- 13>		66
< 4- 14>		68
< 4- 15>	50	71
< 4- 16>		74
< 4- 17>		75
< -4- 18>		76
< 4- 19>	GRDP	-	78
< 5- 1>		82
< 5- 2>		83
< 5- 3>		84
< 5- 4>		85
< 5- 5>	가	86
< 5- 6>	가	:	87
< 5- 7>		88
< 5- 8>		88
< 5- 9>	가	89
< 5- 10>		90
< 5- 11>	가	90
< 5- 12>	가	:	91
< 5- 13>	WTO	91
< 5- 14>	WTO	:	92
< 5- 15>		93
< 5- 16>	:	93
< 5- 17>		94
< 5- 18>		:	95
< 5- 19>		95

< 5-20>	96
< 5-21>	: 97
< 5-22>	97
< 5-23>	98
< 5-24>	: 99
< 5-25>	99
< 5-26>	: 100
< 5-27>	101
< 5-28>	: 101
< 5-29>	102
< 5-30>	: 102
< 5-31>	103
< 5-32>	104
< 5-33>	104
< 5-34>	105
< 5-35>	가 105
< 5-36>	가 - 106
< 5-37>	107
< 6-1>	, 가 119



< 2-1>		10
< 2-2>	가	14
< 2-3>		16
< 2-4>	1997 1998	19
< 2-5>	1998 1999	20
< 4-1>	가	40
< 4-2>		43
< 4-3>	가	45
< 4-4>	가	46
< 4-5>		52
< 4-6>		62
< 4-7>		65
< 4-8>		67
< 4-9>		70
< 4-10>		73
< 4-11>	GRDP	-	78

65.2% 41.9%, 58.1% ,
35% 가 .
가 가 .
가 .
IMF 가
가 . 2001 8
IMF .
가 .

2.

, SOC

가

3.

가가

가

對

가

() 90%

3 (

,) 3 (,
,) .
,
.

4.

,
.
, (1996) 「
6 9 ()
,
,
.
, 가
PQ
가 가 .
가
가
(가) 가 .
() .
,
.

(1998) 「 MRIO

」

가

3

가

가가

(1998) 「

」

MRIO (multiregional input-output model)

가

가

가

가

가 . ,

가 ,

가 .

SOC

가 .

가 .

가 ,

.

CHAPTER 2

1.

‘ ’ 가 , 가 .
가 , 가 .
가 .
16 . ,
對 .
, 對 .
가 (, ,)
가 가 .

2.

1)

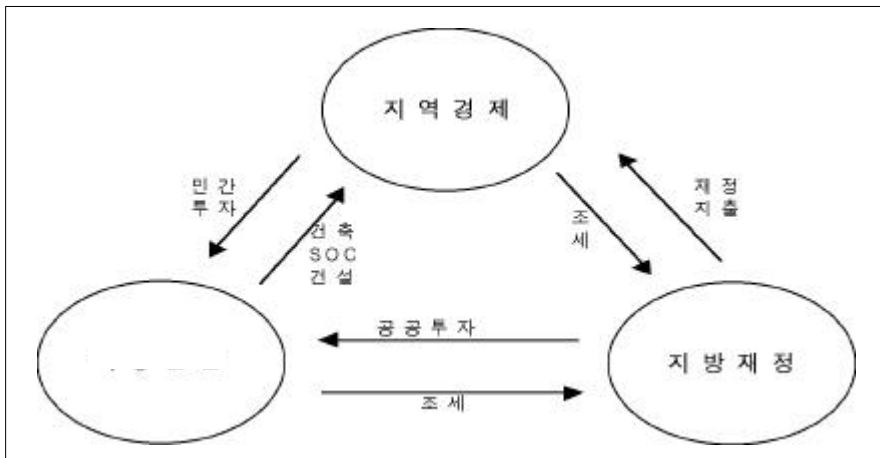
⇔ 3 , ⇔

SOC

3

가

< 2-1 >



2)

?

, SOC ,

() 가 .

(1)

< 2-1> 1998

	1.902	1.887	1.532	1.756
	21	12	22	15

: 1
10 . (/ 10)
: 1998

. 1998

1.902

1.887 1.756 . 10 21

22 12

, 15 .

가

(,

)가

가

(2)

SOC

가,

< 2-2>

(1997)

(10)	388,257	60,342	327,915	124,747	263,510
(%)	100.0	15.5	84.5	32.1	67.9
(10 /km ²)	3.9	99.7	3.3	10.7	3.0

:

. 1997

388

가 15.5%

60

, 328 (84.5%)

SOC

km² 39

997

25

33

30

가

가

SOC

(3)

가가

가

()

가

가가

1980 1990

1) , MRIO

, 1998

3.

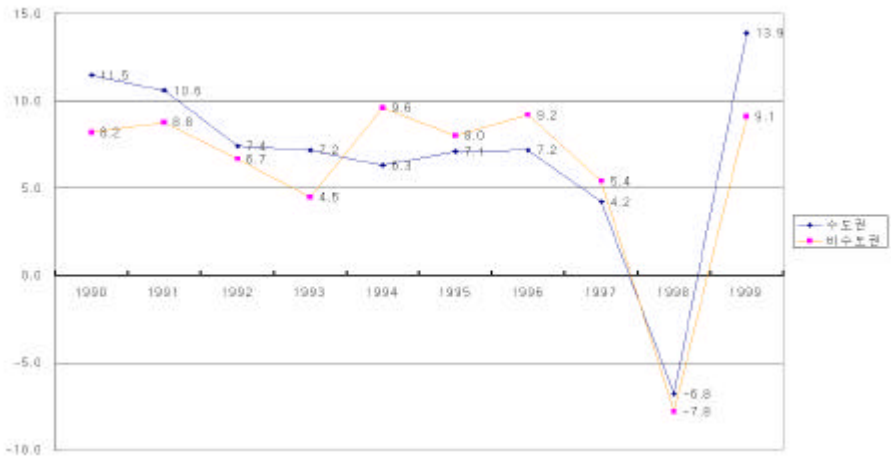
1)

가 (GRDP) 가
GRDP
1994 97
, IMF 1998 1999
1998
-6.8% , -7.8%
1999 가 13.9% 가 9.1%

< 2-2>

가

(: %)



: 1995 가 , 1999

:

IMF

가

1997

가

가

< 2-3>

(: %)

	1960	1970	1980	1990	1999
	20.8	28.3	35.5	42.8	46.3
가가	41.3	44.4	41.9	40.6	44.8
	-	-	35.7	43.9	46.3

: 「 」, 「 」

2)

1990

가가 가

$$(\%) = \frac{\text{GDPT} - \text{GDPT-1}}{\text{GDPT-1}} \times 100$$

1990

1995 1996 2% 가

1998 1999

-2%

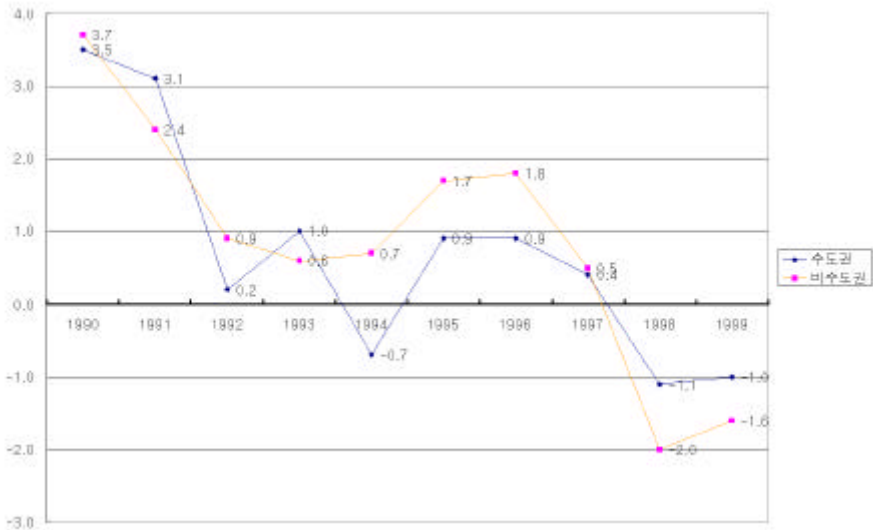
. < 2-2>

1994 1997

1998

< 2-3>

(: %)



(%) = $\frac{\text{GDP}_t - \text{GDP}_{t-1}}{\text{GDP}_{t-1}} \times 100$

: , ,

1998 . 1998
 -6.8% 가 -7.8%
 -1.1% -2.0%
 1998 25% ,
 10%
 1999 13.9% 9.1%
 ,
 -1.0% , -1.6%

< 2-4 >

(: %)

	1998		1999	
	- 6.8	- 7.8	13.9	9.1
	0.0	- 0.4	0.0	0.6
	- 1.6	- 2.6	10.4	6.0
	- 1.1	- 2.0	- 1.0	- 1.6
	- 4.4	- 2.8	4.5	4.1

가 , IMF
 가 , 가

3)

가

IMF 1997 9.5%
 가 1998 8.2%, 1999 7.5%
 1996, 1997 9.5% 9.6% 가 1998
 7.7%, 1999 7.1%

< 2-5>

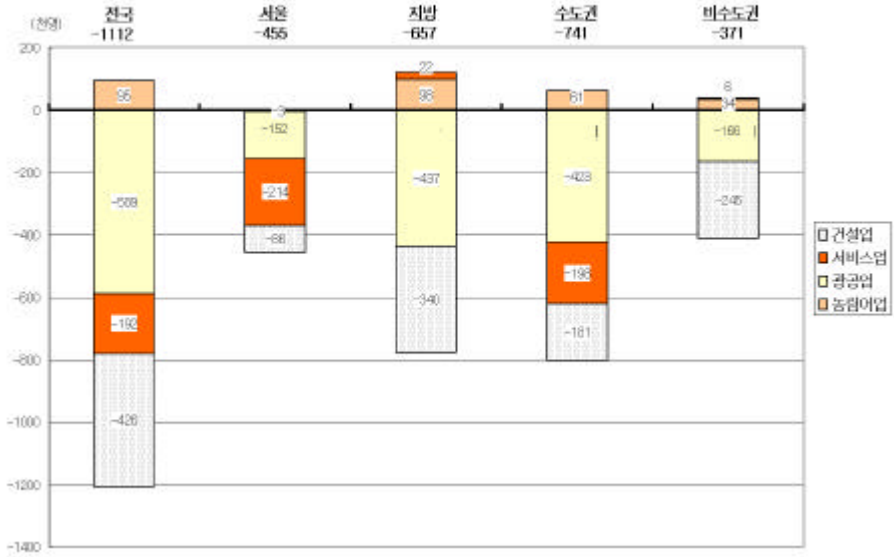
	1992	1993	1994	1995	1996	1997	1998	1999
	8.7	8.8	9.0	9.3	9.5	9.5	7.9	7.3
	9.6	9.0	8.6	9.0	8.9	8.7	7.7	7.4
	8.5	8.7	9.1	9.4	9.7	9.7	8.0	7.2
	9.5	9.1	9.2	9.5	9.5	9.4	8.2	7.5
	8.2	8.4	8.8	9.1	9.5	9.6	7.7	7.1

:

. 1997 1998

가 1 112
 가 426
 741 , 가 181
 371
 245 166
 IMF 1997 1998

< 2-4> 1997 1998

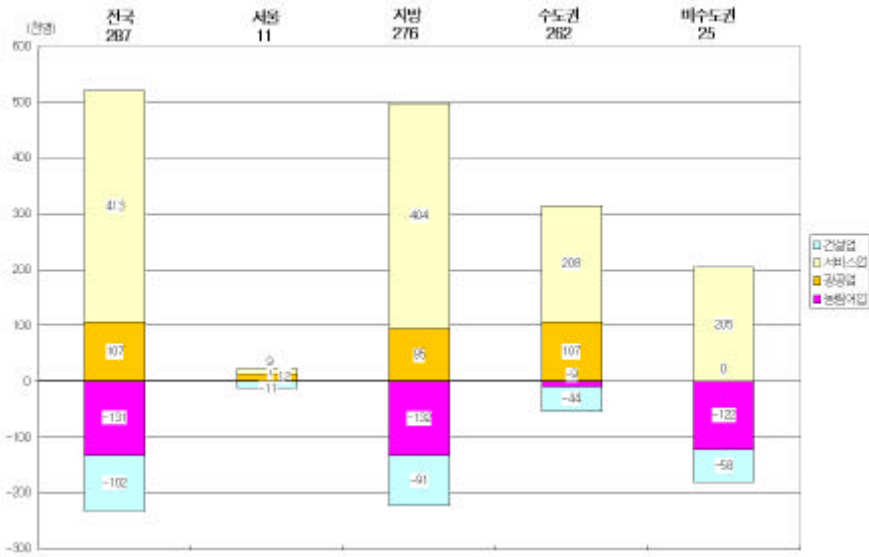


: , 2000

'97 1998 1999

가 , 1999 1998
 가 ,
 . 287 가
 131 102 .
 가 .
 가 . 262
 가 4 4 . ,
 25 가 ,
 5 8 가 .
 2 . 19

< 2-5> 1998 1999

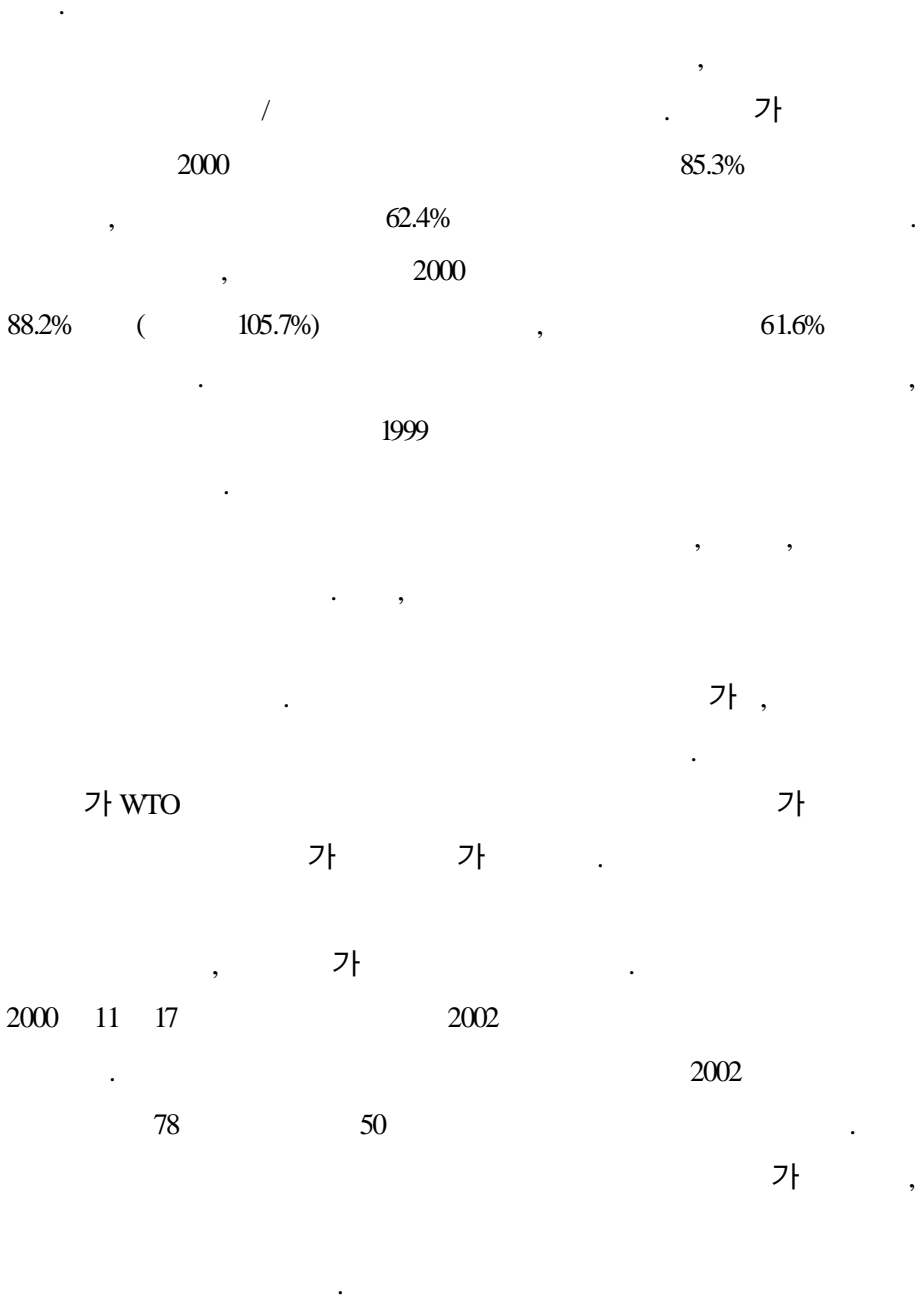


: , 2000

4.

1997 , ,
 가 가 . GRDP
 , 1998 44%가
 87 IMF 1997 72 1999 15
 가 가

가



CHAPTER 3

1.

1)

가 . 가 .
가 .

· , ,
· 가 ,
· , ,

「 」
·

가 .
· ,
· ,

, 2
 .
 가 「 」,
 「 가 」 「 」
 ,
 , 가
 , 가
 가 ,
 ,
 가 ,
 ,

2)

1980 11 .
 . 가 §21 6 ,
 §24 1 §74 , §3 1 ,
 .
 가
 1980
 1 ,
 . 가 81 2 , 82 3 , 86
 10 , 91 15 , 92 20 가 50
 가 . 1996 가 가 30

(50) ()
) 가
 .

< 3-1 >

1980. 11	가 1	가 21
1981. 2	가 2	"
1982. 6	가 3	"
1985. 7	가 6	"
1986. 9	가 10	"
1991. 7	가 15	"
1992. 3	가 20	"
1995. 7	가 20 (가) 가 50 ()	3
1997. 1 ()	가 30 (가) 가 50 ()	24 (2001.1)

WTO가

, .
 (2000.11.17) 가 , 2001 .
 1 2002 .

3)

'94 6 . 가

가 §72

< 3-2>

	'93.6.30	1997.1 1998.12	1999.1 '00.12	2001.1
		- 가 : 58.3 - : 174.9	- 가 : 78 - : 234	- 가 : 78 - : 235
		- (가 39)	-	-

가 1

가 10

< 3-2>

78 가 , 235

가

. WTO

1997 1

500 SDR(58 3)

1,500

SDR(174)

가

30 58 3,000 ,

50 174

, 30 174

WTO

1996

2000 11 17 가

2001 78 50 .

1 .

4)

가

§47 §39 .

< 3-3> 2000

	2000			
1	1		55	11
2	5,000	1	50	16
3	3,500	5,000	45	9
4	2,000	3,500	25	23
5	1,200	2,000	15	34
6	690	1,200	10	41
7	579	690	6	25
				159

1980 1 , 가 .

3%

7

가

2000

1

55

5000

1

50

5) PQ

PQ(가)

가

100

PQ

, 100

가

. PQ

가 ,

10%

1/2

가

가

가

10%,

15%

가

12%,

18%

(1)

가

가

가

10%

1/2

가

10% 가 1/2 가 .
 가 , 6%(30%
 20%) .

< 3-4> 가

가	- 가 : 가 10% 1/2 - 가 : 10%(12%) - : 10 20%
	- 가 : 가 10% 1/2 - 가 : 10%(12%) - : 10 30% , 가 가 .가 : 가 .가 : 15%(18%) . : 10 30%

: () 가

가 가
 . 10 , 10%
 10%(1) 가 . 10
 10 , 가 90 .

(2)

10% , 가
 1/2 가 . 가
 가 . 가

15%(18%)

10 30% ,

10%(12%) 10 20%

< 3-5>

가

- '95.8 '97.2:	90%
- '97.2 '98.2:	90%
- '98.2 '98.9:	가 (가 : 10%)
- '98.9 '99.6:	10% 가 , 가 2
- '99.6 '01.3:	12% 10% 1/2 가
가 10%(가 12%)	
- '01.3	

6)

. 가 §22 가

§39

가 30

가 7

가

가

,

< 3-6>

()

	가 (, ,)	()	
1	700	700	700
2	240 700	370 700	250 700
3	120 240	150 370	130 250
4	80 120	100 150	85 130
5	57 80	65 100	60 85
6	44 57	45 65	45 60
7	30 44	45 30	45 30

2. MRIO

1)

MRIO(multi-regional input-output)

(0)

(0)

가

가

4

$$CA X + C Y = X$$

..... (0)

(0)

		L	M	N	L	M	N	
L		$c^{LL} A^L X^L$	$c^{LM} A^M X^M$	$c^{LN} A^N X^N$	$c^{LL} Y^L$	$c^{LM} Y^M$	$c^{LN} Y^N$	X^L
M		$c^{ML} A^L X^L$	$c^{MM} A^M X^M$	$c^{MN} A^N X^N$	$c^{ML} Y^L$	$c^{MM} Y^M$	$c^{MN} Y^N$	X^M
N		$c^{NL} A^L X^L$	$c^{NM} A^M X^M$	$c^{NN} A^N X^N$	$c^{NL} Y^L$	$c^{NM} Y^M$	$c^{NN} Y^N$	X^N
가		V^L	V^M	V^N				
		X^L	X^M	X^N				

(A)

KOSIS

가

가

가

가

[/]

(C)

1996 11

가

LQ(Location Quotient)

(Y)

MRIO

가 .

2)

MRIO

가

가 .

$$X = (I - CA)^{-1}C^* Y \dots\dots\dots (1)$$

C C*

MRIO

MRIO

C C*

가

. A

CA

. Y

가

, C* Y2)

가

. C*

()

2)

Y 가
 가
 가
 C^* MRIO C
 C^* C C^* (1998)
 MRIO C^*
 6 510 ,
 가 가 가

$$(C_c^* \cdot Y_c^3)$$

가

가

$$CY_{c1} = C_{c0}^* \cdot Y_c^t \dots\dots\dots (2)$$

C_{c0}^* 가

Y_c^t

3)

$$CY_{c2} = C_{c0}^* (Y_c^t - Y_c^g) + C_{c1}^* \cdot Y_c^g \dots\dots\dots (3)$$

C_{c1}^*

Y_c^g

가

(1998)

3)

()

가

가

(prototype) IO

46 9

47 5

. MRIO

가

1998

47 6,172

가

가

47 621

38

38

가 가 50
 가 가 30
 가 가
 50 30
 38 가 가 가

< 3-7>

(: 10)

				-
	20,682.30	31,700.79	32,325.01	624.22
	4,604.70	3,426.46	3,001.24	-425.22
	5,247.70	3,280.05	3,482.32	202.26
	16,401.90	9,209.92	8,812.42	-397.50
	46,936.60	47,617.22	47,620.98	3.76

4,252 , 3,975
 2,023 가
 4)

2

(endowment)

2

4) 가 53%가

. MRIO

4)

MRIO

가

IRIO(Interregional Input Output)

. MRIO

가

가

가

가

CHAPTER 4

1.

1)

. 1998 ,
가 가

가 .
가 .

'97
가 .

1997 가 가 1998

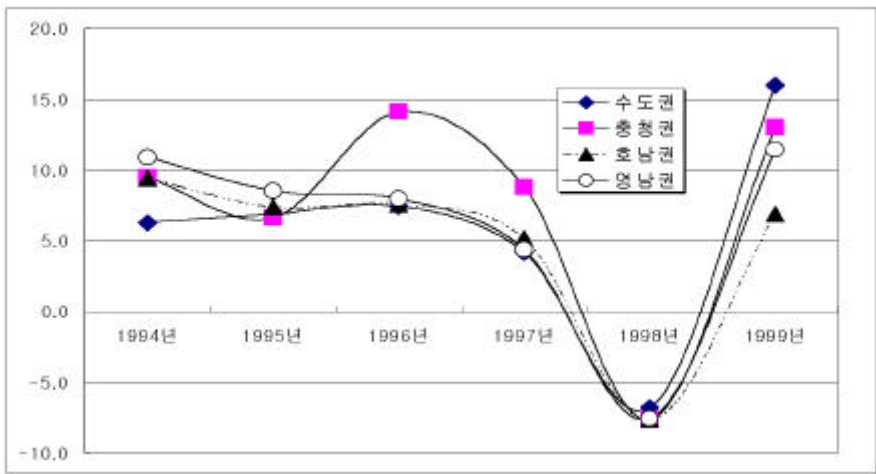
1999 1997 .

1997 1998

1999 .

1998 가 1999
 가 1998
 1999 1997

< 4-1 > 가



: KOSIS

(가) 1994 310 , 1995 357 , 1996 398 , 1997 432 , 1998 424 , 1999 470
 1994 1997
 가 . 가 1994 8.4%, 1995 15.3%, 1996 11.4%, 1997 8.4%, 1999 10.8% . 1994
 1995 가 1996 가 가 1999 1996
 가
 1994 142 , 1995 163 , 1996 181 , 1997

197 , 1998 196 , 1999 217 가 . 1998
 IMF 1999 .
 1994 167 , 1995 194 , 1996 216 , 1997
 234 , 1998 227 , 1999 252 .
 1994 46.0% 1997 45.7%
 1998 가 1999 46.3% .
 , 1994 44.7% 1997 42.3%
 1998 가 1999 45.5% .
 가 1998 -3% -9%
 0% 8% . IMF
 . 1995 가 가

< 4-1 >

(: , %)

	1994	1995	1996	1997	1998	1999
	142,690,728	163,440,854	181,704,710	197,567,450	196,999,443	217,843,051
가	46 12	46 15	46 11	46 9	46 0	46 11
	30,007,329	34,555,324	40,309,456	44,435,442	44,007,544	49,767,989
가	10 17	10 15	10 17	10 10	10 -1	11 13
	34,589,718	40,401,349	44,992,993	48,603,506	46,431,309	51,181,223
가	11 14	11 17	11 11	11 8	11 -4	11 10
	91,392,117	105,816,319	116,220,910	124,748,253	121,482,405	134,635,893
가	29 17	30 16	29 10	29 7	29 -3	29 11

: KOSIS

GRDP 가 1994 (45%), (26%),
 (12%), (11%) , 1997 (40%), (25%),
 (16%), (11%) , 2000 (36%), (26%),
 (16%), (13%) . ,
 가 , 가 .
 IMF (1998, 1999) , 1997
 . 1997 78 , 1998
 82 , 1999 94 가 .
 , 1997
 18%, 1998 19%, 1999 20% 가 ,
 1997 15 , 1998 15 , 1999 17 가 .
 1998 가 1999 1997 가
 .
 (가) 1994 75 , 51
 , 37 , 21 3 , 21 , 1997 97 ,
 78 , 52 , 28 , 27 가
 가 .

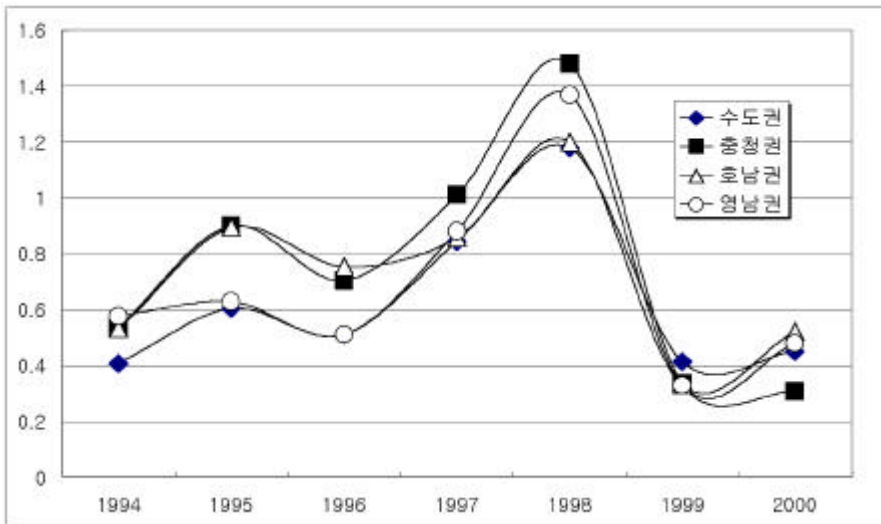
2)

1999

1999

0.29, 0.35, 0.29, 0.42,

< 4-2 >



: www.bok.or.kr

1994 0.2%, 1995 0.2%, 1996 0.2%, 1997 0.5%, 1998 0.5%, 1999 0.4%, 2000 0.4%

가 1994 31%, 1995 18%, 1996 -15%, 1997 206%, 1998 0%, 1999 -17%, 2000 -9%

. 1994 1996 1997 2.5 가 가 1999

1994 0.4%, 1995 0.6%, 1996 0.5%,
 1997 0.8%, 1998 1.2%, 1999 0.4%, 2000 0.5% 0.6%
 . '97 1998
 가 가 1999 (, , , , ,
 , ,) 1994 0.4%, 1995 0.6%, 1996 0.5%, 1997 0.8%,
 1998 1.2%, 1999 0.4%, 2000 0.4% 0.6%

< 4-2 >

(: %)

	1994	1995	1996	1997	1998	1999	2000	
가	0.4 35.6	0.6 48.4	0.5 -15.5	0.8 65.4	1.2 39.9	0.4 -65.0	0.5 8.9	0.6 16.8
가	0.54 5.9	0.90 67.7	0.70 -21.9	1.01 43.6	1.48 46.5	0.33 -77.5	0.31 -8.0	0.75 145.5
가	0.5 21.4	0.9 68.6	0.8 -15.7	0.9 13.7	1.2 40.1	0.3 -72.5	0.5 57.6	0.7 39.7
가	0.6 15.0	0.6 9.1	0.5 -18.7	0.9 72.5	1.4 55.5	0.3 -76.0	0.5 45.7	0.7 43.6

: www.bok.or.kr

1994 2000 0.6%,
 0.75%, 0.7%, 0.7% .
 1994 (0.6%), (0.5%), (0.5%), (0.4%)
 . 1997 (1.0%), (0.9%), (0.9%), (0.8%) .
 2000 , , 0.5% 0.3% .
 1997 1998 가 '97
 .
 1998

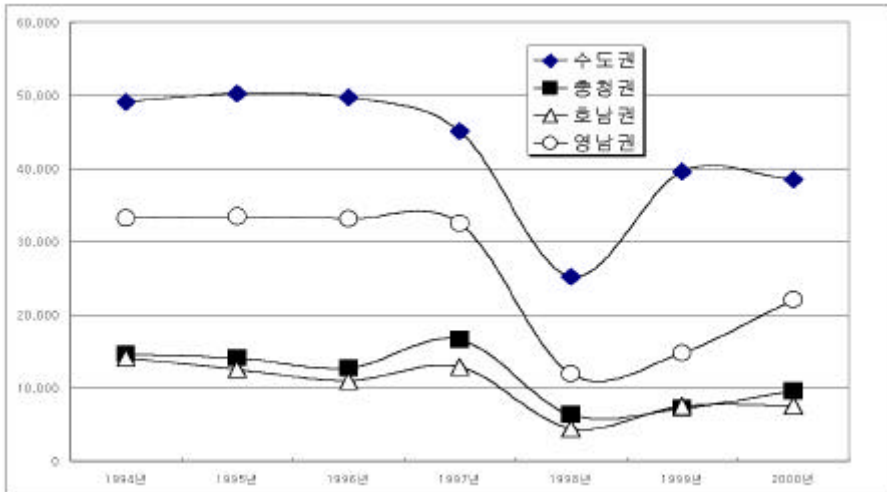
가 . 가 (128%),
 (78%), (62%), (60%), (59%), (56%), (46%), (41%)
 . 1998 가 1999 (-84%),
 (-82%), (-81%), (-79%), (-79%), (-77%) . , 가 1998
 1% 가 1999 73% 가
 1998 18% 가
 1999 79%

3) 가

가 . 가

가 1

< 4-3> 가



: www.kiscon.net

가

1997

1994

가

가

1993

42%

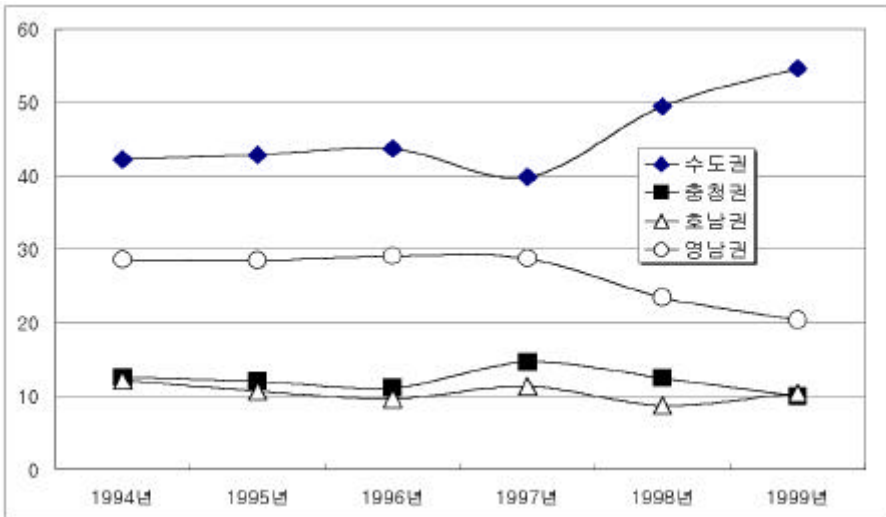
1999

55%

가

가

< 4-4 > 가



가 (, ,)
) 1996 44%, 1997 40%, 1998 50%, 1999
 55%, 2000 48% 47% . IMF
 1998 1999 가
 가 (,) 1996 36%, 1997 32%,
 1998 30%, 1999 27%, 2000 38% 33%
 .
 가 1996 (43.7%), (29.1%),
 (11.2%), (9.6%) . 1997 (39.8%),
 (28.7%), (14.6%), (11.3%) . 1998 (49.5%),
 (23.4%), (12.4%), (8.7%) . 1999 (54.6%),
 (20.4%), (10.4%), (10.0%) . 2000
 (47.5%), (27.3%), (11.8%), (9.4%) .
 1998 가 , 1998 1999 가
 2000 .

< 4-3> 가

(: m², %)

	1994	1995	1996	1997	1998	1999	2000
가	49,107,718	50,285,256	49,720,679	45,164,637	25,202,834	39,620,344	38,520,640
	423	429	43.7	39.8	49.5	54.6	47.5
	-10.1	2.4	-1.1	-9.2	-44.2	57.2	-2.8
가	14,611,482	14,121,662	12,694,565	16,609,227	6,334,600	7,217,514	9,564,312
	12.6	12.0	11.2	14.6	12.4	10.0	11.8
	-1.0	-3.4	-10.1	30.8	-61.9	13.9	32.5
가	14,121,980	12,533,196	10,973,313	12,844,678	4,456,075	7,528,371	7,594,370
	12.2	10.7	9.6	11.3	8.7	10.4	9.4
	19.3	-11.3	-12.4	17.1	-65.3	68.9	0.9
가	33,226,242	33,437,562	33,087,848	32,567,731	11,943,523	14,790,089	22,121,152
	28.6	28.5	29.1	28.7	23.4	20.4	27.3
	7.3	0.6	-1.0	-1.6	-63.3	23.8	49.6

1998 가 , 가
 (-83%), (-77%), (-71%), (-69%), (-66%),
 (-66%), (-56%), (-55%), (-55%) . 1998 가
 가 가 1999 (119%),
 (107%), (96%), (90%) . , 1998 가
 23% 1999 96%
 가 . 1998 가
 52% 1999 1.5% 가

1996 (24%), (17%),
 (11%), (7%) . 1997 (26%), (12%), (10%),
 (7%) . 1998 (35%), (12%), (8%), (7%)
 . 1999 (41%), (11%), (6%), (5%)
 . 2000 (30%), (14%), (8%) .
 가 가 , .
 가

1996 24%, 1997 26%, 1998 35%,
 1999 41%, 2000 30% IMF 가
 가 가 .

4)

IMF 가
 . 1997 37.5% 1999 57.7%
 20%p 가 . 가

가

1997 524 , 1998 298 , 1999
 406 , 2000 5 146 가 1998
 -43%, 1999 36% 1998
 가 1999 가
 1997 38%, 1998 50%, 1999 58%, 2000 5
 50% 49% (, , ,
 , , ,) 1997 36%, 1998 28%, 1999 31%,
 2000 5 37% 33%

< 4-4 >

(: , %)

	1997	1998	1999	2000 5
가	196,458.0 37.5	147,690.0 49.5 -24.8	234,593.0 57.7 58.8	73,517.0 50.4
가	78,667.0 15.0	39,969.0 13.4 -49.2	52,498.0 12.9 31.3	15,115.0 10.4
가	59,921.0 11.4	25,452.0 8.5 -57.5	36,745.0 9.0 44.4	14,096.0 9.7
가	168,015.0 32.1	65,942.0 22.1 -60.8	66,652.0 16.4 1.1	36,407.0 24.9

: www.kiscon.net

1997 (37.5%),
 (32.1%), (15.0%), (11.4%) . 1998 (49.5%),
 (22.1%), (13.4%), (8.5%) . 1999 (57.7%),
 (16.4%), (12.9%), (9.0%) .
 , 가
 . 가 가 가 ,
 IMF 가 가
 .
 1998 , ,
 (-94%), (-76%), (-73%), (-66%),
 (-62%), (-58%), (-56%) . , IMF
 (14%), (49%), (21%)
 . 1998 1999
 (421%), (181%), (118%), (102%) .
 1998 94% 1999
 421% 가 1998
 76% 1999 181% 가
 .
 가
 1997 (22%), (13%), (10%),
 (9%) . 1998 (37%), (10%), (8%),
 (7%) . 1999 (41%), (14%), (7%) .
 2000 (29%), (19%), (7%), (7%) .
 1997 20% 1999 40% ,
 . 1997 22%, 1998

37%, 1999
가

41%, 2000

29%
가

IMF

2.

가

1)

(1)

가 .
가

IMF

1998

가 가

. 1998

가

가

가

가

가

가

가

가

가

< 4-5 >

4 가

1995 45%, 1996 45%, 1997 42%, 1998
 40%, 1999 37%, 2000 36%
 가
 1994 29% 2% 2000 16%
 , 1994 5% 2000 3% ,
 1994 12% 2000 16% 가 .

< 4-5>

(: , %)

	1995	1996	1997	1998	1999	2000
	1,195	1,340	1,500	1,571	1,574	1,838
가	45	45	42	40	37	36
	54	12	12	5	0	17
	1,456	1,626	2,043	2,316	2,625	3,299
가	55	55	58	60	63	64
	65	12	26	13	13	26
	1,377	1,460	1,572	1,568	1,368	1,619
가	52	49	44	40	33	32
	51	6	8	0	-13	18
	1,274	1,506	1,971	2,319	2,831	3,518
가	48	51	56	60	67	68
	70	18	31	18	22	24

: ,

1995 52%, 1996 49%, 1997 44%,
 1998 40%, 1999 33%, 2000 32% 1995
 1999

1994 29% 2000 16% ,
 1994 8% 2000 5% , 1994 5% 2000
 2% , 1994 5% 2000 3% ,
 1994 3% 2000 1% , 1994
 3% 2000 2% .

< 4-6 >

(: , %)

	1994	1995	1996	1997	1998	1999	2000
가	1,195	1,340	1,500	1,571	1,574	1,838	2,832
	45	45	42	40	37	36	36
	54	12	12	5	0	17	54
가	285	303	388	427	532	647	1,061
	11	10	11	11	13	13	13
	73	6	28	10	25	22	64
가	312	366	490	615	720	836	1,296
	12	12	14	16	17	16	16
	99	17	34	26	17	16	55
가	697	769	918	979	1,033	1,373	2,056
	26	26	26	25	25	27	26
	46	10	19	7	6	33	50

: ,

가 1994 (45%), (26%),
 (12%), (11%) , 1997 (40%), (25%),
 (16%), (11%) , 2000 (36%), (26%),
 (16%), (13%) . ,

가 , 가 . 가
 1994 (29%), (12%), (8%), (8%) ,
 1997 (22%), (14%), (8%), (8%) , 2000
 (16%), (16%), (9%), (9%) . 가

가 , , .

(2)

1994 13,730 , 1995 15,010 , 1996 16,962 , 1997 20,401 , 1998 21,639 , 1999 25,620 , 2000 27,364 . 가 1995 1,280 , 1996 1,952 , 1997 3,439 , 1998 1,238 , 1999 3,981 , 2000 1,744 가 , 1999 4 가 .

< 4-7>

(: , %)

	1995	1996	1997	1998	1999	2000
가	6,201 45 34	6,606 44 7	7,348 43 11	8,953 44 22	9,295 43 4	11,024 43 19
가	7,529 55 55	8,404 56 12	9,614 57 14	11,448 56 19	12,344 57 8	14,596 57 18
가	7,521 55 36	7,889 53 5	8,563 50 9	10,125 50 18	10,471 48 3	11,845 46 13
가	6,209 45 56	7,121 47 15	8,399 50 18	10,276 50 22	11,168 52 9	13,775 54 23

: , 1995 45%, 1996 44%, 1997 43%, 1998 44%, 1999 43%, 2000 43% , 1994 33%

2000 26% , 1994 3% 2000 4%
 가 , 1994 9% 2000 14% 가 .
 .
 1995 55%, 1996 53%, 1997 50%,
 1998 50%, 1999 48%, 2000 46% . 1995
 ,
 . , 1994 33% 2000 26%
 2%

< 4-8 >

(: , %)

	1994	1995	1996	1997	1998	1999	2000
	6,201	6,606	7,348	8,953	9,295	11,024	11,702
	45	44	43	44	43	43	43
가	34	7	11	22	4	19	6
	1,370	1,609	1,947	2,268	2,489	2,951	3,166
	10	11	11	11	12	12	12
가	52	17	21	16	10	19	7
	1,800	2,034	2,317	2,763	3,104	3,674	3,952
	13	14	14	14	14	14	14
가	78	13	14	19	12	18	8
	3,687	3,953	4,404	5,256	5,491	6,409	6,875
	27	26	26	26	25	25	25
가	47	7	11	19	4	17	7

가 1994 (45%), (27%),
 (13%), (10%) , 1997 (44%), (26%),
 (14%), (11%) , 2000 (43%), (25%),
 (14%), (12%) .

가 .
 , 가 1994 (33%), (9%),
 (9%), (8%) , 1997 (29%), (11%), (8%),
 (8%) , 2000 (25%), (14%), (8%), (7%)
 , 가
 , , .

2)

1992 2000 , 2000
 1,583 1992 1,663 8
 . 1992 1997 가 가 가
 IMF 1998 1999 . 1998
 가 21.3% , 1999 6.5%
 가 .

< 4-9>

(: , %)

	1992	1993	1994	1995	1996	1997	1998	1999	2000
	1,663	1,689	1,781	1,905	1,971	2,004	1,578	1,476	1,583
가	-	1.6	5.5	7.0	3.5	1.7	-21.3	-6.5	7.3

: KOSIS / 가, 가

2000 가 7.3% 가 ,
 2000 가 IMF

1997 2,004 , 1992 .
 2000 가 . 1/4
 1,401 가 4/4 1,653 252 가 .
 가 가 . 2000
 가 .
 2000 4/4 362 가
 , 336 , 130 , 가 97 , 90 ,
 88 . 786 ,
 867 47.6%
 . 698 42.2%
 812 , 841
 49.1% .

3)

2000 10 31 388,056
 가 12,876 , 가 110,307 , 가 63,017 , 가
 147,167 .
 28%, 8%, 가 18%
 54% .
 가 51%, 2%, 가 23% 76% .
 가 29%, 4%, 가 18% 51% .
 23%, 5%, 가 17% 45% .
 27%, 4%, 가 19% 50% .

가 76%, 51%

28%, 6%, 5%, 4%

5%, 1%, 4% 52%

51%, 7%, 4%

2%, 2%, 1%, 3% 70%

29%, 8%, 6%, 4%, 6%, 1%

4% 58% 23%

8%, 6%, 5%, 7%, 1%, 4%

54% 27%, 5%, 4%

4%, 5%, 1%, 3% 49%

70%

51%

< 4-10> (2000)

(: , %)

	194,871	9,908	56,482	28,794	73,621	26,066
	50	77	51	46	50	48
	41,434	537	10,597	5,963	16,179	8,158
	11	4	10	9	11	15
	53,742	439	13,681	9,835	20,701	9,086
	14	3	12	16	14	17
	81,243	1,838	25,488	15,784	28,948	9,185
	21	14	23	25	20	17

: www.kocea.or.kr()

			50%,	21%,	14%,
11%	.			77%,	14%,
4%,	3%	.		51%,	
23%,	12%,	10%	.		
46%,	25%,	16%,	9%	.	
	50%,	20%,	14%,	11%	.
	,	,	,		

3.

가 .

가 .⁶⁾

가

6)

1)

(1)

75 1999 47 1997 63% , 1997
가
. IMF 1997 2000 ,
73% 60% 가 7)
. IMF

< 4-11 >

(: %)

	62.9
	72.8
	61.7
	61.1
	59.2

가

7) 1997 100 2000

가

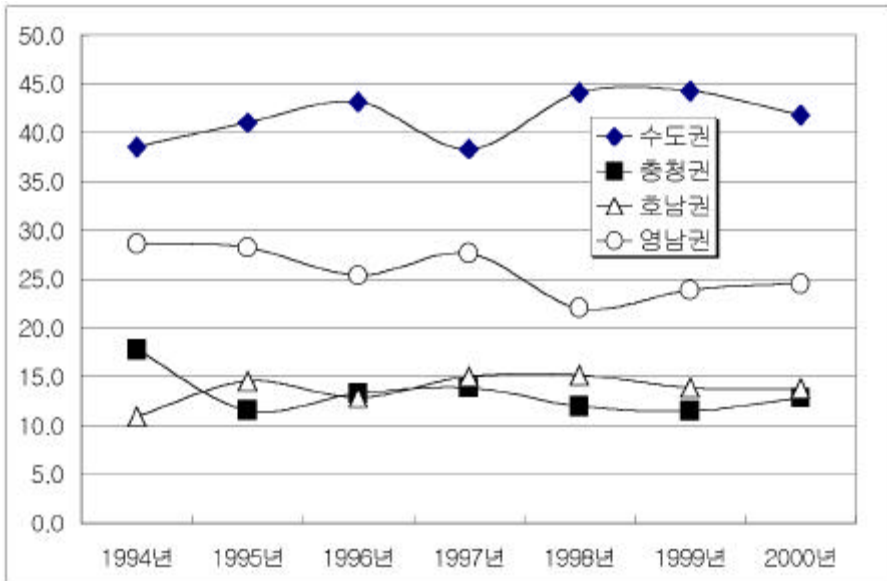
가

가

가

1994 52 , 1995 58 , 1996 69 , 1997 75 ,
1998 47 , 1999 47 . 1995 1997
1998 , 1999

< 4-6 >



1994 38.5%, 1995 41.0%, 1996 43.1%, 1997 38.3%, 1998 44.1%, 1999 44.3% 40% .
 , '97 1998 1999
 가 가
 . 1994 35.5%, 1995 36.1%, 1996 35.8%,
 1997 35.3%, 1998 34.8%, 1999 31.1% 35%
 .
 가 1994
 (38.5%), (28.6%), (17.7%), (10.9%) , 1997
 (38.3%), (27.6%), (15.0%), (13.9%) ,
 1999 (44.3%), (23.9%), (13.9%), (11.5%)
 가 ,

< 4- 12 >

(: 10 , %)

	1994	1995	1996	1997	1998	1999	2000
	20,098	23,619	29,654	28,677	20,764	20,870	20,877
가	38.5	41.0	43.1	38.3	44.1	44.3	41.8
	3.2	17.5	25.6	-3.3	-27.6	0.5	0.0
	9,252	6,621	9,114	10,383	5,616	5,405	6,404
가	17.7	11.5	13.3	13.9	11.9	11.5	12.8
	57.4	-28.4	37.7	13.9	-45.9	-3.8	18.5
	5,676	8,365	8,817	11,246	7,125	6,533	6,869
가	10.9	14.5	12.8	15.0	15.1	13.9	13.8
	26.7	47.4	5.4	27.5	-36.6	-8.3	5.1
	14,929	16,251	17,432	20,691	10,358	11,248	12,246
가	28.6	28.2	25.4	27.6	22.0	23.9	24.5
	29.9	8.9	7.3	18.7	-49.9	8.6	8.9

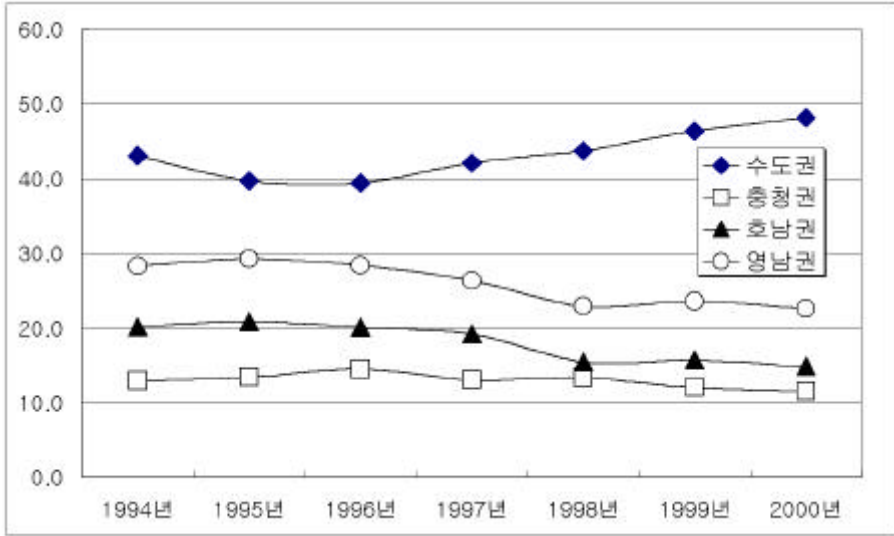
: ,

1998
 (-62%), (-57%), (-54%), (53%), (-49%), . . (-48%)
 . 20% , , , IMF
 (1.4%), (-7%),
 (-14%) . 1998 가 1999
 (31%), (49%), (21%) . , 1998
 22% 1999
 15% 가 , 1998 14%
 1999 4% .
 1996 (21%), (18%), (9%) , 1997
 (19%), (14%), (9%) , 1998 (24%), (14%),
 (7%) , 1999 (27%), (13%), (8%)
 . 가 ,
 . 1994 20%, 1995 21%, 1996 21%, 1997
 19%, 1998 24%, 1999 27% IMF
 가 .

(2)

가 1994 가 가 (persistence)
 .
 () 가
 가

< 4-7 >



1997 40%

IMF 1998 43.7%, 1999 46.6%

가 .

1997 36% IMF 1998 39.6%, 1999 38.8% 가 .

가 1994 (43.1%), (28.3%), (20.1%), (12.9%), 1997 (42.1%), (26.3%), (19.2%), (13.0%), 1999 (46.4%), (23.6%), (15.7%), (12.0%) . 1994 1996 1997 가 , , .

< 4-13 >

(: 10 , %)

	1994	1995	1996	1997	1998	1999	2000
가	21,493.6	23,312.1	28,445.2	32,962.8	29,467.0	31,492.0	31,849.5
	43.1	39.7	39.4	42.1	43.7	46.4	48.1
	17.3	8.5	22.0	15.9	-10.6	6.9	1.1
가	6,440.3	7,870.7	10,456.8	10,201.6	8,995.2	8,161.4	7,622.6
	12.9	13.4	14.5	13.0	13.3	12.0	11.5
	16.5	22.2	32.9	-2.4	-11.8	-9.3	-6.6
가	10,032.2	12,237.9	14,489.9	15,003.4	10,415.6	10,638.4	9,801.9
	20.1	20.8	20.1	19.2	15.5	15.7	14.8
	31.2	22.0	18.4	3.5	-30.6	2.1	-7.9
가	14,131.0	17,173.6	20,468.0	20,626.6	15,450.7	16,017.3	14,971.6
	28.3	29.3	28.4	26.3	22.9	23.6	22.6
	28.3	21.5	19.2	0.8	-25.1	3.7	-6.5

: ,
 1998 1999 IMF ,
 , , , . , ,
 . 1998 20.7%, 1999 13.8%, 1998 24.3%,
 1999 10.6%, 1998 21.5%, 1999 9.1% . 1998
 , , 1998
 40.6%(33.6%)가 . , ,
 가 (6.0%, 3.7%) . 1998
 1999 가 .
 1994 22.6%,
 16.7%, 10.9%, 6.8%, 6.7% 6.6% . 1995
 20.2%, 15.5%, 10.7%, 8.1%, 7.4%, 7.1% .
 1996 19.8%, 15.0%, 10.3%, 8.9%, 7.1%,
 7.0% . 1997 20.4%, 16.3%, 9.4%, 7.4%,
 7.0% . 1998 20.0%, 17.6%, 7.3%,

6.5% 6.4% . 1999 22.9%, 17.6%, 6.8%,
 6.6%, 5.9%, 5.8% .
 1, 2 36% .

2)

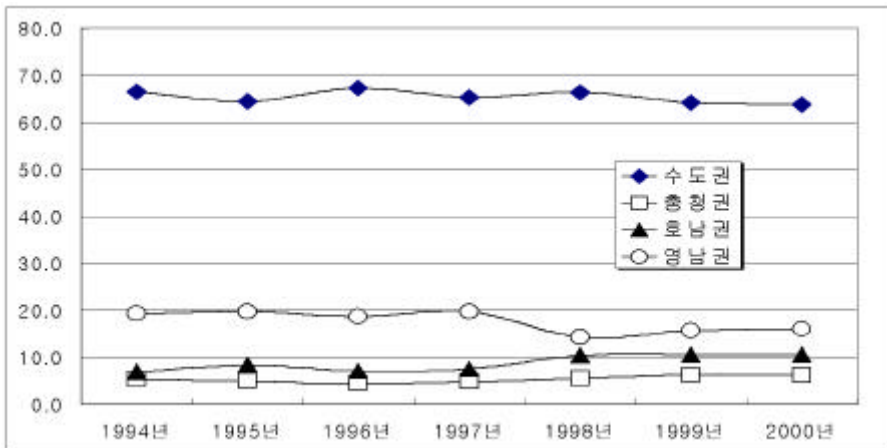
(1)

1993 1997
 가

1993 1997 가
 가 가

가

< 4-8 >



1997 가 가 . 1997
 가 , 가
 가 .
 가
 1994 66.5%, 1995 64.4%, 1996 67.3%, 1997 65.3%, 1998
 66.4%, 1999 64.2% 2/3

IMF

< 4- 14 >

(: 10 , %)

	1994	1995	1996	1997	1998	1999	2000
가	34,697	37,106	46,242	48,927	31,249	30,251	31,837
	66.5	64.4	67.3	65.3	66.4	64.2	63.8
	22.1	6.9	24.6	5.8	-36.1	-3.2	5.2
가	2,824	2,881	3,066	3,619	2,615	2,971	3,087
	5.4	5.0	4.5	4.8	5.6	6.3	6.2
	9.2	2.0	6.4	18.1	-27.7	13.6	3.9
가	3,582	4,824	4,879	5,620	4,912	4,980	5,297
	6.9	8.4	7.1	7.5	10.4	10.6	10.6
	21.5	34.7	1.1	15.2	-12.6	1.4	6.4
가	10,067	11,393	12,839	14,761	6,737	7,390	8,015
	19.3	19.8	18.7	19.7	14.3	15.7	16.1
	19.8	13.2	12.7	15.0	-54.4	9.7	8.5

가 1994 (66.5%),
 (19.3%), (6.9%), (5.4%) , 1997 (65.3%),
 (19.7%), (7.5%), (4.8%) , 1999 (64.2%),
 (15.7%), (10.6%), (6.3%) . 가
 , 가
 .
 1998 (-75%), (-54%),
 (-52%), (49%), (-45%) 가
 . 30% , , , , ,
 , IMF ,
 , , , . 1998 가
 1999 (31%), (30%), (27%),
 (25%) . , 1998
 15% 1999 17%
 , 1998 8%, 1999 6%
 가 가 .
 1994 1999
 2/3 . 1996 57%, 1997
 55%, 1998 54%, 1999 51% ,
 1996 7%, 1997 7%, 1998 9%, 1999 11% 가 IMF
 가 .

(2)

가 가

가

1994

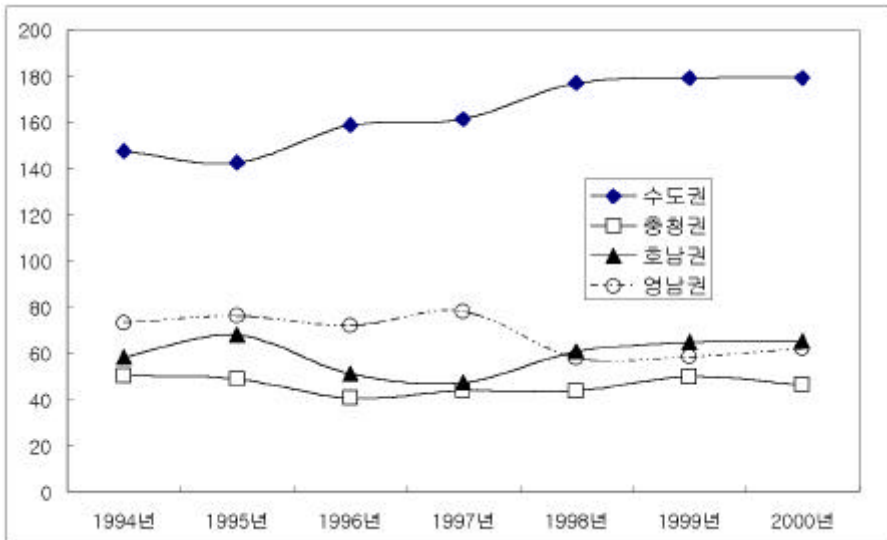
1997

가

100

가

< 4-9 >



가
가

(3) 50

가 1 50 1993
20 , 1994 25, 1995 25 , 1996 31 , 1997 35 가
IMF 1998 20
가

< 4-15> 50

(: 10 , %)

	1994	1995	1996	1997	1998	1999
	22,084	21,437	27,673	29,155	18,175	18,872
	88.48	84.78	88.64	84.38	91.10	90.95
가	32.21	-2.93	29.09	5.35	-37.66	3.84
	94.1	119.5	0	354	341.1	384.7
	0.38	0.47	0.00	1.02	1.71	1.85
가	-74.20	26.99	-100.00		-3.64	12.78
	703.7	867.7	351.3	743.7	302.6	572.6
	2.82	3.43	1.13	2.15	1.52	2.76
가	-10.70	23.31	-59.51	111.70	-59.31	89.23
	2039.5	2862.3	3194.7	4300.4	1131.1	921.6
	8.17	11.32	10.23	12.45	5.67	4.44
가	-11.42	40.34	11.61	34.61	-73.70	-18.52

: ,

1994 (22), (6 700), (5
 900), (5 800) . 1997 (29), (2 4),
 (1 6), (4), (3) . 1998 (17), (5
 7), (5 5), (3 4) .

88%

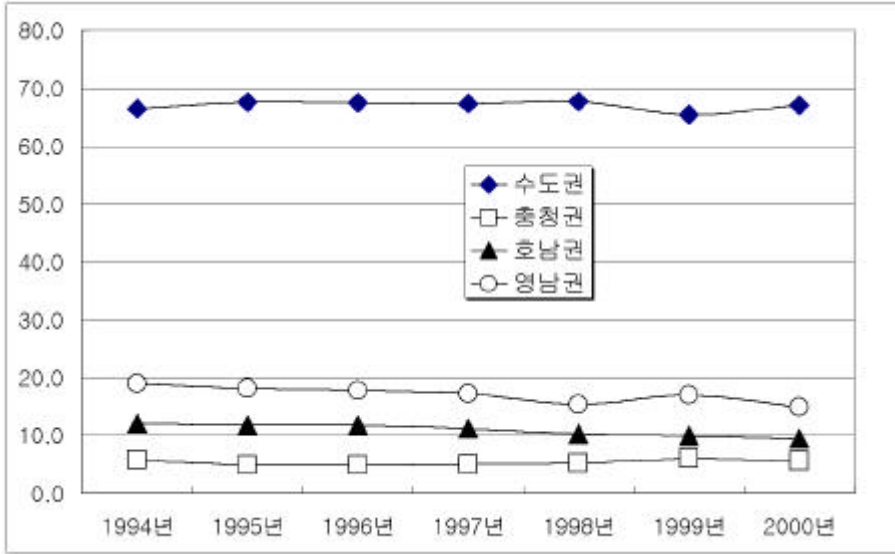
1997 84.4%, 1998 91.1%

(4)

가 . 1998 1993 1997
 가
 . 1998

1993

< 4- 10 >



, 1994 50 , 1995 59 , 1996 72 , 1997 78 가
 가 1998 67 1999 68 가
 1994 21.0%, 1995 17.7%, 1996 22.9%, 1997 8.5% 가 1998
 -14.0% , 1999 가 (0.8% 가).
 67% 가 1999 65%

70%

가 , 1994
 74.2% 1999 69.8%

< 4-16 >

(: 10 , %)

	1994	1995	1996	1997	1998	1999	2000
	33,153.0	39,695.8	48,713.3	52,714.3	45,620.1	44,411.7	44,354.8
	66.5	67.6	67.5	67.3	67.7	65.4	67.0
가	22.7	19.7	22.7	8.2	-13.5	-2.6	-0.1
	2,875	2,856	3,512	3,936	3,536	4,059	3,722.8
	5.8	4.9	4.9	5.0	5.2	6.0	5.6
가	20.7	-0.7	23.0	12.1	-10.2	14.8	-8.3
	3,497	4,335	5,509	6,228	5,945	6,065	6,221.7
	7.0	7.4	7.6	8.0	8.8	8.9	9.4
가	17.6	24.0	27.1	13.1	-4.6	2.0	-7.6
	9,447	10,667	12,852	13,473	10,360	11,514	9,836.1
	18.9	18.2	17.8	17.2	15.4	17.0	14.9
가	18.3	12.9	20.5	4.8	-23.1	11.1	-14.6

4.

1)

가 가 .
 가 .
 가
 가 .
 가 .
 가 (redistribution) 가 .

< 4-17>

(: 10 , %)

		1994	1995	1996	1997	1998	1999	
가		9,010.5	9,873.0	13,420.6	13,126.8	8,375.8	8,351.2	10,359.7
		20,090.2	23,553.8	29,568.6	28,670.2	20,682.3	20,630.3	23,865.9
		45.1	44.4	42.8	45.1	40.9	42.8	43.5
		44.9	41.9	45.4	45.8	40.5	40.5	43.2
가		1,649.7	1,290.9	1,692.5	2,041.8	1,355.6	1,562.5	1,523.4
		9,247.6	4,974.7	7,653.3	7,797.7	4,401.3	3,936.5	6,133.4
		27.0	27.1	26.7	26.4	31.3	41.0	29.1
		17.8	25.9	22.1	26.2	30.8	39.7	24.8
가		2,170.4	3,086.7	3,367.8	3,693.6	2,889.4	3,011.0	3,036.5
		5,670.9	8,354.6	8,805.1	11,240.3	7,106.1	6,511.8	7,948.1
		39.0	39.9	40.2	35.5	37.8	45.0	39.6
		38.3	36.9	38.2	32.9	40.7	46.2	38.2
가		6,251.1	6,566.8	7,106.6	8,026.3	4,068.1	4,561.7	6,198.1
		14,921.6	16,236.0	17,421.5	20,681.8	10,337.5	11,212.0	15,653.9
		45.0	43.9	43.6	39.9	36.7	38.6	38.2
		41.9	40.4	40.8	38.8	39.4	40.7	39.6

: ,

< 4-17>

1998 1999

2000

가

1999

가

가

. 1994

9 2,476

가 1999

3 9,365

57.4% .8) 1994 34% 1999
 41% 가 가
 1997
 가 1997 20 30
 MRIO 가
 가
 19.3% 가 가
 (50.3%) 가
 가
 가

< 4-18 >

(: %)

		1995 ~2000	1995 ~1999
	가	4.4	14
	가	2.1	23
	가	0.1	-4.2
	가	0.2	-1.2

가

8) 16
 4

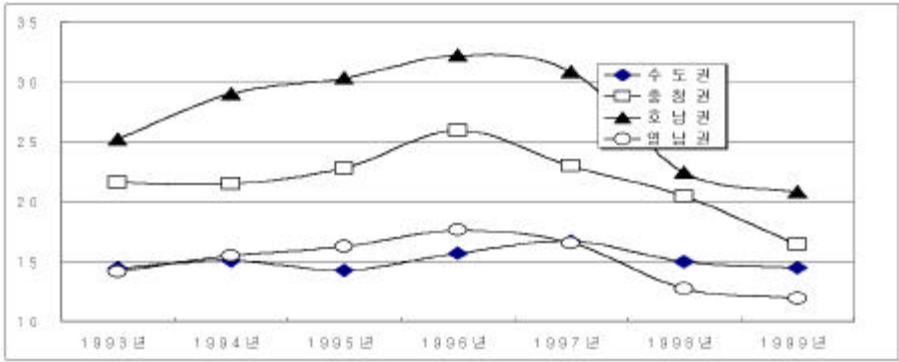
가

가
 60% 1997 70%
 < 4-18 >

2) GRDP

GRDP GRDP 가가
 가가 가
 . MRIO . 가가
 가가
 . GRDP
 , 가
 가
 가가
 .
 1993
 가
 .
 가

< 4-11> GRDP



: , , KOSIS

[/ GRDP] / [/ GDP]
 LQ(Location Quotient) . GRDP 가

가가 .

. GRDP 100

< 4-19> GRDP

(: %)

	1994	1995	1996	1997	1998	1999
가	15	14	16	17	15	14
가	94	87	86	92	94	100
가	4	-5	10	7	-10	-3
가	21	23	26	23	20	16
가	134	139	143	127	129	114
가	-1	6	14	-11	-11	-20
가	29	30	32	31	22	21
가	180	185	178	170	141	144
가	15	4	6	-4	-27	-7
가	15	16	18	17	13	12
가	96	99	97	91	80	82
가	9	5	9	-6	-23	-6

: , , KOSIS

가

100

가

가

가
가

CHAPTER 5

1.

가 가

가

.

,

,

,

,

,

,

, PQ가

가

.

< 5-2>

(: , %)

	66	12.5
	54	10.3
	86	16.3
	107	20.3
	43	8.2
	114	21.7
/	56	10.6
	526	100.0

,
 가 48 , 1,500 ,
 2 . 41 , 4,179 ,
 1 .

2. :

, ,
 가 288 51.1%, 가 216
 38.3% 90% 가
 , 가 57 10.1%,
 가 3 0.5% .

< 5-3>

(: , %)

	288	51.1
	216	38.3
	57	10.1
	3	0.5
	564	100

	가	가	
가			.
161 ,	70 (45.3%),		
67 (41.6%),	23 (14.3%),		
가 1 (0.6%) .	116 ,		
67 (57.8%),	36 (31.0%),		
11 (9.5%),	가 2 (1.7%) .	50	
,	25 (50.0%),		
20 (40.0%),	5 (10.0%) .	139	
,	70 (50.4%),	55	
(39.6%),	14 (10.1%) . /	56	
,	29 (51.8%),		
25 (44.6%),	2 (3.6%) .		

< 5-4>

(: , %)

	70	67	23	1	161
	43.50%	41.60%	14.30%	0.60%	100.00%
	67	36	11	2	116
	57.80%	31.00%	9.50%	1.70%	100.00%
	25	20	5		50
	50.00%	40.00%	10.00%		100.00%
	70	55	14		139
	50.40%	39.60%	10.10%		100.00%
/	29	25	2		56
	51.80%	44.60%	3.60%		100.00%
	261	203	55	3	522
	50.00%	38.90%	10.50%	0.60%	100.00%

가 가

가

가

가 가

가

가

가

(initiator)

가

가

32%가

가가

가

가

가

가 50.3% 가

261 50.3%,

93 17.9%,

가

100

19.3%,

11.1 12.5%

< 5-5>

가

(: , %)

	261	50.3
	93	17.9
	100	19.3
	65	12.5
	519	100

가

가

가

141 ,

가 67 (47.5%),

26 (18.4%),

가

가 33 (23.4%) .

111 ,

가 54 (48.6%),

23 (20.7%),

가

가 24 (21.6%) .

45 ,

가 21

(46.7%),

8 (17.8%),

가 7 (15.6%) . 131 ,
 가 71 (54.2%),
 31 (23.7%), 가
 가 17 (13.0%) . / 53 ,
 가 26 (49.1%),
 3 (5.7%), 가 가 9 (17.0%) .

< 5-6> 가 : (: , %)

			가		
	67	26	33	15	141
	47.50%	18.40%	23.40%	10.60%	100.00%
	54	23	24	10	111
	48.60%	20.70%	21.60%	9.00%	100.00%
	21	8	7	9	45
	46.70%	17.80%	15.60%	20.00%	100.00%
	71	31	17	12	131
	54.20%	23.70%	13.00%	9.20%	100.00%
/	26	3	9	15	53
	49.10%	5.70%	17.00%	28.30%	100.00%
	239	91	90	61	481
	49.70%	18.90%	18.70%	12.70%	100.00%

,
 가
 ,
 가 218 39.1%,
 가 266 47.7%, 가
 72 12.9% . ,
 가 51.1%, 가 38.3%, 가 10.1%

< 5-7>

(: , %)

	218	39.1
	266	47.7
	72	12.9
	2	0.4
	558	100

가 가
가 .

· ,

· ,

.

< 5-8>

(: , %)

	52	81	25	1	159
	32.70%	50.90%	15.70%	0.60%	100.00%
	54	45	13	1	113
	47.80%	39.80%	11.50%	0.90%	100.00%
	18	26	6		50
	36.00%	52.00%	12.00%		100.00%
	57	62	19		138
	41.30%	44.90%	13.80%		100.00%
/	21	29	6		56
	37.50%	51.80%	10.70%		100.00%
	202	243	69	2	516
	39.10%	47.10%	13.40%	0.40%	100.00%

가 가
 가
 51.9%, 254 17.2%,
 가 93 19.0%, 84 58 11.9%

< 5-9>

가

(: , %)

	254	51.9
	84	17.2
가	93	19.0
	58	11.9
	489	100.0

45.3% 43.4%

< 5-10>

(: , %)

	116	45.3
	111	43.4
	8	3.1
	21	8.2
	155	100.0

3. :

, PQ가 , .
 가 348 64%, 가 109 20%,
 가 27 5%, PQ가 가 60
 11% .

< 5-11> 가

(: , %)

	348	64
	109	20
	27	5
PQ가	60	11
	544	100

,
 PQ가 , 가 .

< 5- 12>

가

:

(: , %)

				PQ가	
	94	28	8	18	148
	63.50%	18.90%	5.40%	12.20%	100.00%
	69	28	5	13	115
	60.00%	24.30%	4.30%	11.30%	100.00%
	30	15	4	1	50
	60.00%	30.00%	8.00%	2.00%	100.00%
	90	24	7	13	134
	67.20%	17.90%	5.20%	9.70%	100.00%
/	41	7	2	6	56
	73.20%	12.50%	3.60%	10.70%	100.00%
	324	102	26	51	503
	64.40%	20.30%	5.20%	10.10%	100.00%

WTO

가

가

가

가

가 324 60.9%,

가 116 21.8%,

가 29 5.5%, PQ가

가 63

11.8%

< 5- 13> WTO

(: , %)

	324	60.9
	116	21.8
	29	5.5
PQ가	63	11.8
	532	100.0

PQ가 ,

가

< 5- 14> WTO

:

(: , %)

				PQ가	
	84	25	14	22	145
	57.90%	17.20%	9.70%	15.20%	100.00%
	71	23	4	12	110
	64.50%	20.90%	3.60%	10.90%	100.00%
	28	15	5	1	49
	57.10%	30.60%	10.20%	2.00%	100.00%
	81	36	5	10	132
	61.40%	27.30%	3.80%	7.60%	100.00%
/	37	10	1	7	55
	67.30%	18.20%	1.80%	12.70%	100.00%
	301	109	29	52	491
	61.30%	22.20%	5.90%	10.60%	100.00%

5

567 2,123 ,

143 3,402 ,

18 1,037 , PQ 가

62 3,066 . , 5

54 155 ,

16 269 ,

72 270

, PQ 가 22 1,127 .

4. :

175 31.4% 가 135

24.2%, 132 23.7%, (/) 61 10.9%

55 9.9% .

< 5- 15>

(: , %)

	175	314
	132	23.7
	55	9.9
	135	24.2
	61	10.9
	558	100.0

가

< 5- 16> :

(: , %)

					/	
	142	3	3	5	8	161
	88.20%	1.90%	1.90%	3.10%	5.00%	100.00%
	3	111				114
	2.60%	97.40%				100.00%
	2		46		1	49
	4.10%		93.90%		2.00%	100.00%
	2	1	5	122	6	136
	1.50%	0.70%	3.70%	89.70%	4.40%	100.00%
/	10	1		3	40	54
	18.50%	1.90%		5.60%	74.10%	100.00%
	159	116	54	130	55	514
	30.90%	22.60%	10.50%	25.30%	10.70%	100.00%

가
 가 88.2%, 97.4%, 93.9%,
 89.7%, / 74.1% , , 가
 가 , /
 가
 가 333 63.4% 가 가
 가 19.3%, 가 16.1%

< 5- 17>

(: , %)

	333	60.1
가	107	19.3
	89	16.1
	25	4.5
	554	100.0

가 가
 가 75%
 , 가

< 5- 18>

:

(: , %)

	가	가			
	86	29	34	9	158
	54.40%	18.40%	21.50%	5.70%	100.00%
	63	32	19		114
	55.30%	28.10%	16.70%		100.00%
	35	9	3	2	49
	71.40%	18.40%	6.10%	4.10%	100.00%
	89	22	17	8	136
	65.40%	16.20%	12.50%	5.90%	100.00%
/	31	8	12	5	56
	55.40%	14.30%	21.40%	8.90%	100.00%
	304	100	85	24	513
	59.30%	19.50%	16.60%	4.70%	100.00%

90%가

.

.

< 5- 19>

(: , %)

	511	919
	45	8.1
	556	100.0

가

가 45.9%

가

가 39.1%,

가 12.4%

가

가

가

< 5-20>

(: , %)

	66	12.4
가	244	45.9
	208	39.1
	14	2.6
	532	100.0

150 ,
 32 (21.3%), 가
 54 (36.0%), 62
 (41.3%) . 111 ,
 14 (12.6%), 가 60 (54.1%),
 37 (33.3%) . 48 ,
 6 (12.5%), 가
 20 (41.7%), 19 (39.6%) .
 130 , 4 (3.1%),
 가 66 (50.8%),
 54 (41.5%) . / 54 ,
 5 (9.30%), 가 25
 (46.3%), 23 (42.6%) .

< 5-21 >

:

(: , %)

		가			
	32	54	62	2	150
	21.30%	36.00%	41.30%	1.30%	100.00%
	14	60	37		111
	12.60%	54.10%	33.30%		100.00%
	6	20	19	3	48
	12.50%	41.70%	39.60%	6.30%	100.00%
	4	66	54	6	130
	3.10%	50.80%	41.50%	4.60%	100.00%
/	5	25	23	1	54
	9.30%	46.30%	42.60%	1.90%	100.00%
	61	225	195	12	493
	12.40%	45.60%	39.60%	2.40%	100.00%

가

가 55% 가 .

19.5%, 가 15.5%

가 가

< 5-22 >

(: , %)

	138	55
가	39	15.5
	49	19.5
	25	10
	251	100

< 5-24>

:

(: , %)

	69	12	39	6	7	12	145
	47.60%	8.30%	26.90%	4.10%	4.80%	8.30%	100.00%
	35	29	21	5	4	9	103
	34.00%	28.20%	20.40%	4.90%	3.90%	8.70%	100.00%
	4	10	16	8		5	43
	9.30%	23.30%	37.20%	18.60%		11.60%	100.00%
	47	26	33	12	4	4	126
	37.30%	20.60%	26.20%	9.50%	3.20%	3.20%	100.00%
/	3	25	14	8		2	52
	5.80%	48.10%	26.90%	15.40%		3.80%	100.00%
	158	102	123	39	15	32	469
	33.70%	21.70%	26.20%	8.30%	3.20%	6.80%	100.00%

가 45.4% 가

가

,

,

.

< 5-25>

(: , %)

	108	20.8
	236	45.4
	97	18.7
	71	13.7
	8	1.5
	520	100.0

가 가
 가 가
 가 가
 가 가

< 5-26 >

:

(: , %)

	26	67	25	28	3	149
	17.40%	45.00%	16.80%	18.80%	2.00%	100.00%
	39	28	22	11	4	104
	37.50%	26.90%	21.20%	10.60%	3.80%	100.00%
	8	29	9	1		47
	17.00%	61.70%	19.10%	2.10%		100.00%
	22	66	24	15	1	128
	17.20%	51.60%	18.80%	11.70%	0.80%	100.00%
/	4	30	10	9		53
	7.50%	56.60%	18.90%	17.00%		100.00%
	99	220	90	64	8	481
	20.60%	45.70%	18.70%	13.30%	1.70%	100.00%

가 가 51.9% 가
 가 (21.8%)
 (20.4)

< 5-27>

(: , %)

가	257	51.9
가	108	21.8
가	101	20.4
	29	5.9
	495	100.0

가 , ,
 가 가 .
 ,
 . , 가
 50% .

< 5-28>

:

(: , %)

	가				
	71	25	32	9	137
	51.80%	18.20%	23.40%	6.60%	100.00%
	50	26	19	5	100
	50.00%	26.00%	19.00%	5.00%	100.00%
	18	16	10		44
	40.90%	36.40%	22.70%		100.00%
	70	23	21	8	122
	57.40%	18.90%	17.20%	6.60%	100.00%
/	30	10	12	3	55
	54.50%	18.20%	21.80%	5.50%	100.00%
	239	100	94	25	458
	52.20%	21.80%	20.50%	5.50%	100.00%

40.2% 가
 , 31.9%가
 , 19.0% 가

< 5-29 >

(: , %)

	184	40.2
	146	31.9
가	87	19.0
	41	9.0
	458	100.0

(51.2%) (26.8%),
 가 (17.1%) ,
 40%

< 5-30 >

:

(: , %)

	53	41	24	13	131
	40.50%	31.30%	18.30%	9.90%	100.00%
	42	29	21	9	101
	41.60%	28.70%	20.80%	8.90%	100.00%
	11	21	7	2	41
	26.80%	51.20%	17.10%	4.90%	100.00%
	45	31	18	11	105
	42.90%	29.50%	17.10%	10.50%	100.00%
/	18	14	5	5	42
	42.90%	33.30%	11.90%	11.90%	100.00%
	169	136	75	40	420
	40.20%	32.40%	17.90%	9.50%	100.00%

2)

가 233 56.1%,
 가 73 17.6%, 가 64
 15.4%, 가 19 4.6%
 (34.1%), (27.6%), (20.7%)
 56.1% 가

< 5-31 >

(: , %)

	233	56.1
	73	17.6
	64	15.4
	19	4.6
	8	1.9
	18	4.3
	415	100.0

가

(43.8%)

< 5-32>

(: , %)

	96	22.9
	184	43.8
	52	12.4
	78	18.6
	10	2.4
	420	100.0

가
 가 143
 35.2% . 가 108
 26.6% . 가
 . , 가
 가

< 5-33>

(: , %)

가	143	35.2
가	143	35.2
가	108	26.6
	12	3.0
	406	100.0

가
 35.8% 가
 . 가
 31.8% .

< 5-34>

(: , %)

	136	35.8
	121	31.8
가	87	22.9
	36	9.5
	380	100.0

6.

가 ,
 , SOC ,
 . 144 27.2%,
 143 27%, SOC
 98 18.5%, 70
 13.2%, 69 13.0% .

< 5-35>

가

(: , %)

	69	13.0
	143	27.0
	70	13.2
	144	27.2
SOC	98	18.5
	5	0.9
	529	100.0

가 가

가

가

SOC

가

(SOC ,)

()

< 5-36>

가

(: , %)

	18	43	23	34	26	3	147
	12.20%	29.30%	15.60%	23.10%	17.70%	2.00%	100.00%
	19	22	10	34	23		108
	17.60%	20.40%	9.30%	31.50%	21.30%		100.00%
	8	15	3	11	7	1	45
	17.80%	33.30%	6.70%	24.40%	15.60%	2.20%	100.00%
	15	39	22	37	20	1	134
	11.20%	29.10%	16.40%	27.60%	14.90%	0.70%	100.00%
/	5	17	3	24	6		55
	9.10%	30.90%	5.50%	43.60%	10.90%		100.00%
	65	136	61	140	82	5	489
	13.30%	27.80%	12.50%	28.60%	16.80%	1.00%	100.00%

가

/

. IMF

가

< 5-37>

(: , %)

	88	16.8
	39	7.4
	53	10.1
SOC	275	52.4
	49	9.3
	18	3.4
	3	0.6
	525	100.0

SOC

. SOC

275

52.4%,

88

16.8%,

53

10.1%,

49

9.3%,

39

7.4%,

18 3.4% . SOC
 (52.4%) 가 10%
 SOC .
 . , 가 SOC
 .

CHAPTER 6

1.

1)

IMF . 1990
가 .

IMF . 1998 2
,

IMF
가 ,

가 . 가 .

가 .

가 . 가 .

2)

가
가
SOC
SOC
가
,가
가 가
가

2.

1)

가

7 가

가

7

REITs(Real Estate in Trust)

SOC

PFV(Project Finance Vehicle)

46

가

가

2001 3

가

(199 , 2000

) 1/4 (103 /366)

490 . 1.5 가 2 , , ,

. 가 가
. 가 IMF

2)

. 가 SOC
가 , 가 .

(1) SOC

. SOC
가
SOC

가 . 가

,
SOC
(物流)

가

SOC

SOC

가

가

가

SOC

가

SOC

SOC

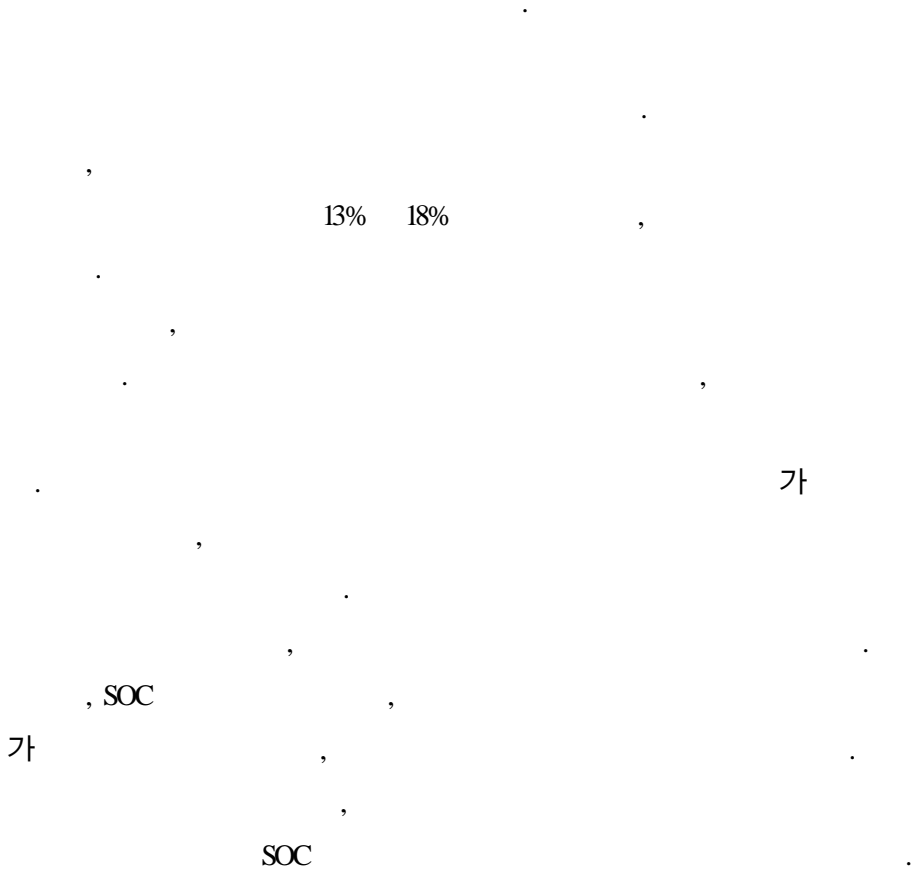
(2)

SOC

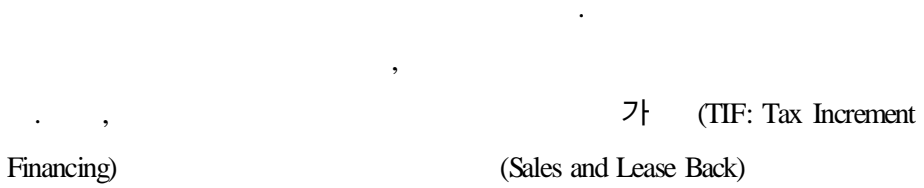
가

2

가



(3)



SOC

가

가

SOC

3

(4)

가

가

가

(5)

가

가

가

가

,
,
가 , 가 가 .

10 16 ‘
’가 SOC
,

SOC 가 가 가
가 가
가 ,
가 .

3.

1)

WTO 가

가

가

가

가

(set aside) 가

(states)

D.C

1992

(minority)

5%,

5%,

2%

가

3

12%

가

9)

EU

(EU rule)

(Taxpayer rule)

가

9)

가

가 5%

가

5%

가

가

Match System"

D.C

가

"Bid

"Local Business Enterprise System"

< 6-1> , 가 .

			가
	<p>○ - - - - ○ - . 가 - - - 가</p>	<p>○ - - - ○ - . - -</p>	<p>○ - . ○ - ○ - . - . 가</p>
○		○ .	○

2)

•

(1)

· ·
· ,

가

가

가

· ,

·
,

·
,

가

가

· ,

MRIO

가

1998

47 6,172

가

가

47 621

38

가

가

·

가

가

가

가

(2)

PQ

PQ

가

가

가

가

가

가

,

가

가

(50)

가

, 가 .10)
 .
 가 .5 6
 가
 가 . 가가 ,
 가 .
 , ,
 가 .
 가 가
 (가 :78
 .
 , :235)
 가 ,2 가 .
 5 ,
 가 가
 . . . 가
 .
 가 .
 PQ
 가 .

10)

(2) • 가

, 가 가 가 SOC

가 가 가 가 가 가 가

10 1 1 8 2

가 ,

(3)

가 (,) ,
 가 (2001(9.21) (18)
 298 가
 257 (86.2%), 가 41 (13.8%)
 가

< 6-2 >

	194	11	52	6	6	5	4	4	3	3	3	2	3	3	298	
(%)	65.17	3.64	17.45	2	2	1.67	1.34	1.34	1	1	1	0.67	1	0.67	100	

) 2001. 9. 21

, 가 , 18

가

3 (3

7

가
가)

21

가

(4)

가

가

가 .
, 가 .
가

가 . ,

, .

,

, ,

.

(5)

가 .

,

가

.

가

가

,

가

.

.

,
가

,

.

가

,

가

()

가

.11)

가

11)

”, 2000.6

가

가 . ()

가 , 가 ,

가

가

, CM(), , 가 .

가

가

가

가

가

가

가

(6)

가

가

가

가

가 ‘

가
가 ‘

7 CHAPTER

가

MRIO

3

SOC

가

가

SOC

SOC

가

WTO 가

가

가

PQ

가,

가

가



, “ IMF -
 , ”,
 , 1999. 6
 , 「 」, , 2001
 , 「 가 」, , 2000
 , 「 」, , 2000
 , “ ”,
 , 2001. 2
 , , 「 : 」,
 , 1995. 12
 , , 「 」, , 1996. 12
 , , 「 」, , 1998. 10
 , , 「 」, , 1996. 12
 , , 「 」, , 1996. 6
 , , 「 」, , 1994
 , “ MRIO
 ”, , 1998. 8
 , , 「 」, ,
 1998. 11

Isard, W., Regional Input-Output Study: Recollections, Reflections, and Diverse Notes on the Philadelphia Experience (Cambridge, Mass.: The MIT press, 1971)

Miernyk, W. H. et al., Simulating Regional Economic Development: An Industry Analysis of the West Virginia Economy (Lexington, Mass. : Lexington Books, 1970)

Oosterhaven, J., Interregional Input-Output Analysis and Dutch Regional Policy Problems, (Aldershot: Gowen. 1981)

SUMMARY

Current Situation and Activating Scheme of Regional Construction Industry

Myeong-Soo Kim, Hwan-Sung Lee, Min-Chul Kim

Regional economy has experienced deep depression since economic crisis in 1997. Long-term recession in the local construction industry has played a core role in this depression. Most of construction companies located in local areas are relatively small in capital and fall behind in technology comparing with those in capital region. Local construction companies confronted with high-growth rate in the number of construction firms in spite of severe decrease in construction ordering.

This study aims to analyze on current situation and activating scheme of the local construction industry. Specifically, roles of local construction industry in regional economy are investigated. Regulations and policies for local construction industry are explained. Current situation and problems are explored, emphasizing on the view of local contractors. Then activating strategies are derived.

Local construction serves important roles on regional economy. Local construction industry activates and supports regional business cycles. It supplies infrastructure facilities such as road, railroad, airport, etc. And it can frequently contribute regional economic growth directly as a basic industry.

We have special systems for supporting the local construction industry. 'Restricted Bidding for Local Contractor' and 'Obligatory Joint-Venture with Local Contractor' are representative systems. 'Restricted Bidding for Local Contractor' regulates that only local construction companies can participate in bidding process under certain amount of construction projects. In 'Obligatory Joint-Venture with Local Contractor', the bidder can participate in bidding process only when he joint with local contractor as a partner.

There exists regional difference between capital-region and the other region. This looks more severe than before the economic crisis in 1997. Permitted building square meters recover 85.3% in capital-region, comparing with that before economic crisis. However, the other areas show 62.4% recovery. In amount of receiving order, capital-region recover 88.2%, while the other region 61.6%.

Strategies for local construction industry are derived in three categories.

1. To activate local construction business, it is needed to increase construction investment and demand. Invest more in infrastructure and basic facilities and advance ordering schedule. Induce more private participation in infrastructure. Project-financing method is adopted and used more oftenly for local infrastructure investment. Effective policies are needed to increase local private construction demand.

2. Bidding systems for local contractor are also improved. Main purpose of these systems is to protect and support local construction industry. "Government Procurement Agreement" asks to repeal these

system after joining WTO in 1994. Deregulation committee decided to abolish them in 2002.

However, considering current situation of local construction industry, it is inevitable to use systems which have direct impacts on regional economy in short term. 'Restricted Bidding for Local Contractor' and 'Obligatory Joint-Venture with Local Contractor' can be classified into this category. These regulate qualification of pre-bidding. In long term, it is necessary to change the method of supporting in order to strengthen competitiveness of local construction industry. We suggest systems in which owner provides incentives or supports indirectly for awardee of bidding.

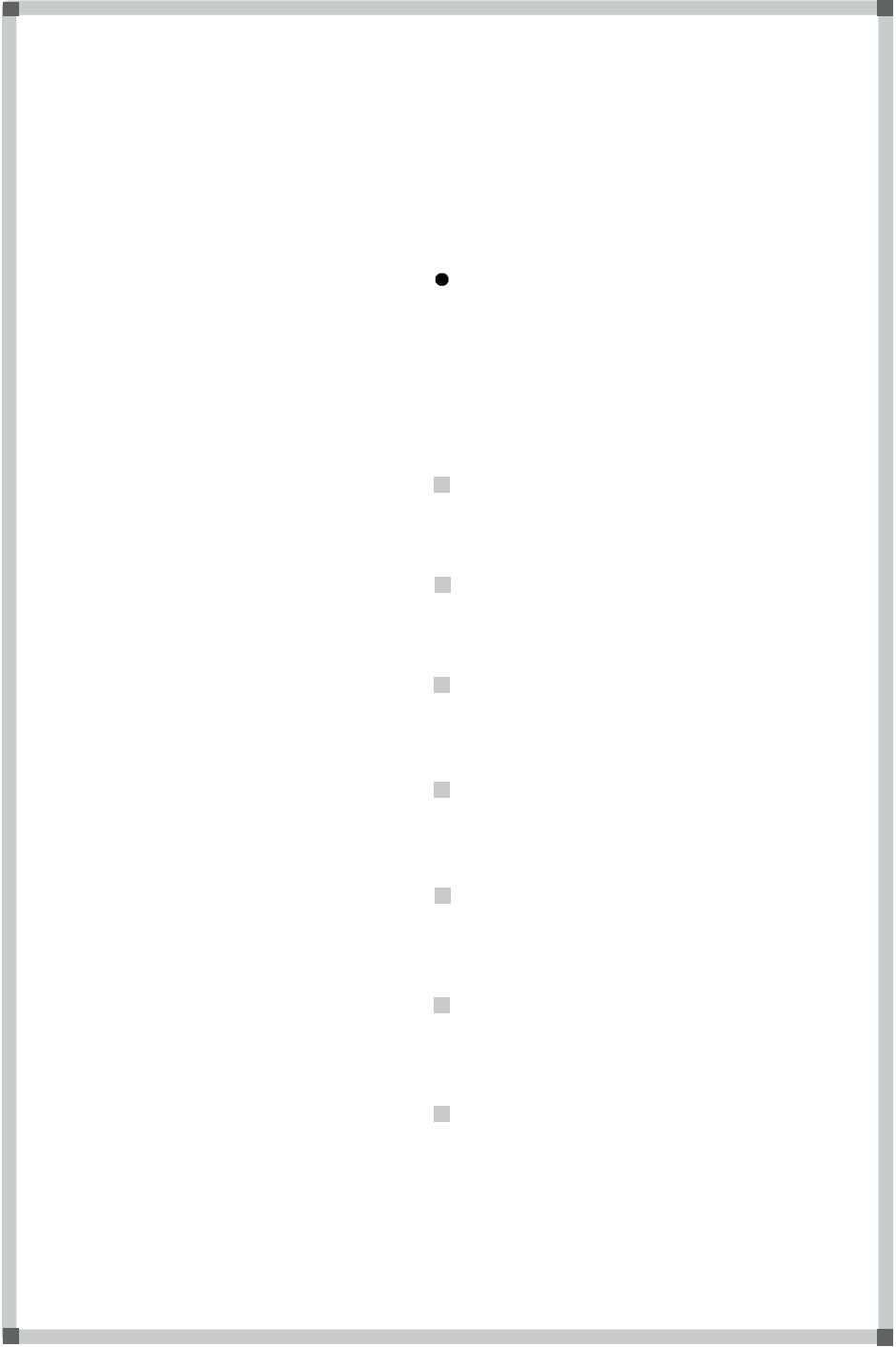
3. Local construction industry should enhance competitiveness and endeavor to survive by itself. To make circumstance, first of all disqualified contractor should be expelled out of the local construction market. Disqualified contractors include contractors who do not satisfy requirements of construction license or have no construction capacity at all.

Second, local contractors try to improve their construction technology and ability and specialize in their own field. Also they endeavor to reduce construction cost to reform 'high cost, low efficiency' structure. Strategic cooperation is needed between local contractors. Even between local contractors and capital-region contractor or foreign contractors.

Every agent who are related with local construction industry has to help each other. Especially, the role of those Associations related with local contractors is emphasized. They can help local contractors by providing information, since local contractor has always problems in obtaining information.

Hence, we suggest that a network is established in order to manage and collect information and basic data more systematically. It connects

local contractors with owners and construction-related associations. We call this network as "Local Construction Information Center". Local Construction Information Center will provide any information on construction policies and laws, regional economy, national land planning. Also it supplies information on new construction technologies, public notices of bidding, construction labor and material, regional construction investments, and a help-wanted advertisements.



< 1-1> (가) (:)

	1994	1995	1996	1997	1998	1999
가	310,369,327 14.6	357,722,460 15.3	398,639,013 11.4	432,194,988 8.4	424,708,981 - 1.7	470,482,728 10.8
가	76,224,143 25 11	84,598,728 24 11	93,272,013 23 10	97,946,893 23 5	94,695,087 22 - 3	102,460,375 22 8
가	21,337,782 7 13	24,134,923 7 13	26,883,323 7 11	27,759,757 6 3	27,224,985 6 - 2	29,365,921 6 8
가	11,825,318 4 14	13,917,759 4 18	15,210,903 4 9	16,065,791 4 6	14,909,219 4 - 7	16,271,460 3 9
가	15,073,770 5 12	18,007,029 5 19	19,721,122 5 10	21,148,848 5 7	19,738,381 5 - 7	20,937,311 4 6
가	7,319,382 2 16	8,522,225 2 16	9,295,388 2 9	9,986,204 2 7	9,229,150 2 - 8	10,350,291 2 12
가	7,085,013 2 10	7,934,873 2 12	8,646,852 2 9	9,734,964 2 13	9,829,460 2 1	10,720,473 2 9
가					21,225,123 5	24,156,704 5 14
가	51,392,815 17 15	60,835,097 17 18	68,711,575 17 13	78,471,709 18 14	82,565,975 19 5	94,445,365 20 14
가	8,466,944 3 13	9,766,748 3 15	11,396,444 3 17	12,374,051 3 9	11,614,701 3 - 6	12,415,143 3 7
가	10,163,751 3 18	11,846,345 3 17	13,691,243 3 16	15,325,459 4 12	15,370,460 4 0	17,475,438 4 14
가	12,758,565 4 21	14,774,106 4 16	17,971,361 5 22	19,375,019 4 8	18,807,624 4 - 3	21,572,078 5 15
가	11,145,009 4 15	12,971,746 4 16	14,620,976 4 13	15,459,265 4 6	14,729,638 3 - 5	16,251,447 3 10
가	16,125,327 5 12	18,907,378 5 17	21,076,629 5 11	23,158,037 5 10	22,472,521 5 - 3	24,579,485 5 9
가	21,177,324 7 19	24,003,127 7 13	26,232,200 7 9	28,849,256 7 10	27,309,990 6 - 5	31,753,474 7 16
가	37,051,693 12 21	43,760,510 12 18	47,894,484 12 9	52,073,449 12 9	30,813,088 7 - 41	33,088,334 7 7
가	3,222,491 1 21	3,741,867 1 16	4,014,502 1 7	4,466,286 1 11	4,173,580 1 - 7	4,639,429 1 11

< 1-2> (1995 가) (:)

	1994	1995	1996	1997	1998	1999
가	333,114,083 8.2	357,722,460 7.4	387,505,852 8.3	406,621,977 4.9	376,716,652 - 7.4	425,434,550 12.9
가	82,168,429 25 4	84,598,728 24 3	90,518,428 23 7	91,336,107 22 1	83,006,320 22 - 9	90,894,721 21 10
가	22,763,214 7 7	24,134,923 7 6	25,993,693 7 8	25,885,154 6 0	23,919,406 6 - 8	25,684,457 6 7
가	13,532,396 4 9	13,917,759 4 3	14,780,483 4 6	14,781,913 4 0	13,009,542 3 - 12	14,152,157 3 9
가	16,081,361 5 11	18,007,029 5 12	19,018,292 5 6	19,457,807 5 2	16,727,897 4 - 14	19,250,915 5 15
가	7,826,833 2 8	8,522,225 2 9	8,923,862 2 5	9,209,727 2 3	8,027,211 2 - 13	9,141,775 2 14
가	7,718,852 2 5	7,934,873 2 3	8,394,130 2 6	9,096,778 2 8	8,545,812 2 - 6	9,298,884 2 9
가					19,225,966 5	21,634,452 5 13
가	54,670,070 16 8	60,835,097 17 11	66,049,151 17 9	72,138,048 18 9	70,721,248 19 - 2	87,528,403 21 24
가	9,106,896 3 7	9,766,748 3 7	10,845,694 3 11	11,645,089 3 7	10,417,051 3 - 11	10,902,593 3 5
가	10,821,479 3 8	11,846,345 3 9	13,235,800 3 12	14,822,379 4 12	13,962,720 4 - 6	15,993,548 4 15
가	13,869,897 4 13	14,774,106 4 7	17,798,909 5 20	18,977,785 5 7	17,120,057 5 - 10	19,487,249 5 14
가	12,288,736 4 8	12,971,746 4 6	13,928,692 4 7	14,212,440 3 2	13,074,695 3 - 8	14,122,268 3 8
가	17,508,705 5 11	18,907,378 5 8	20,605,225 5 9	22,272,059 5 8	21,101,418 6 - 5	21,834,186 5 3
가	22,054,603 7 13	24,003,127 7 9	25,942,355 7 8	27,941,869 7 8	25,904,494 7 - 7	30,702,161 7 19
가	39,159,763 12 13	43,760,510 12 12	47,518,340 12 9	50,599,318 12 6	28,119,990 7 - 44	30,594,479 7 9
가	3,542,848 1 4	3,741,867 1 6	3,952,799 1 6	4,245,505 1 7	3,832,828 1 - 10	4,212,302 1 10

< 2 >

(: %)

	1994	1995	1996	1997	1998	1999	2000
	0.2	0.2	0.2	0.5	0.5	0.4	0.4
가	30.8	17.6	- 15.0	205.9	0.0	- 17.3	- 9.3
	0.1	0.1	0.1	0.5	0.4	0.4	0.4
가	42.9	20.0	- 16.7	360.0	- 10.9	7.3	- 13.6
	0.6	0.5	0.4	0.9	2.0	0.5	0.5
가	20.8	- 19.0	- 6.4	97.7	127.6	- 75.8	- 4.2
	0.5	0.6	0.5	0.6	0.7	0.3	0.6
가	2.0	11.5	- 15.5	12.2	23.6	- 58.8	117.9
	0.4	0.8	0.8	1.0	1.7	0.5	0.6
가	26.7	121.1	- 6.0	31.6	61.5	- 69.0	13.5
	0.3	0.9	0.6	0.8	1.2	0.3	0.4
가	42.1	214.8	- 30.6	39.0	46.3	- 79.2	52.0
	0.5	0.9	0.7	0.9	1.1	0.2	0.3
가	32.4	104.4	- 28.3	36.4	16.7	- 77.1	16.7
				1.0	1.1	0.2	0.2
가					17.9	- 78.6	- 8.3
	0.7	0.9	0.6	1.0	1.5	0.3	0.4
가	39.6	14.9	- 24.7	60.9	40.8	- 80.7	35.7
	0.7	0.9	0.7	0.7	1.1	0.5	0.3
가	40.8	33.3	- 26.1	0.0	55.9	- 57.5	- 31.1
	0.5	1.0	0.7	1.2	1.8	0.3	0.3
가	14.9	90.7	- 33.0	68.1	58.6	- 81.5	- 11.8
	0.6	0.8	0.8	1.0	1.6	0.4	0.3
가	- 12.7	21.0	1.3	27.6	59.8	- 72.9	- 19.0
	0.7	0.8	0.9	1.0	1.3	0.4	0.7
가	23.6	22.1	6.0	15.9	23.5	- 69.0	82.1
	0.6	1.0	0.8	0.7	1.1	0.4	0.5
가	12.3	56.3	- 21.0	- 7.6	56.2	- 69.3	34.3
	0.7	0.8	0.5	1.0	1.2	0.3	0.3
가	17.5	17.9	- 34.2	88.5	21.4	- 71.4	- 8.8
	0.5	0.7	0.6	1.1	1.9	0.3	0.8
가	20.5	26.4	- 11.9	78.0	78.1	- 84.0	163.3
	0.6	0.9	0.7	0.9	0.9	0.3	0.3
가	- 1.6	47.6	- 23.7	31.0	1.1	- 73.4	0.0

< 3> 가

(: m²)

	1996	1997	1998	1999	2000
	113,820	113,374	50,965	72,534	81,059
가	19,641 17.3	13,052 11.5 -33.5	5,876 11.5 -55.0	7,608 10.5 29.5	11,031 13.6 45.0
가	7,154 6.3	5,849 5.2 -18.2	3,520 6.9 -39.8	2,719 3.7 -22.8	4,692 5.8 72.6
가	6,137 5.4	6,486 5.7 5.7	1,092 2.1 -83.2	2,263 3.1 107.2	4,141 5.1 83.0
가	2,414 2.1	2,618 2.3 8.5	1,388 2.7 -47.0	2,213 3.1 59.4	3,496 4.3 58.0
가	2,669 2.3	4,034 3.6 51.1	916 1.8 -77.3	1,737 2.4 89.6	2,482 3.1 42.9
가	2,772 2.4	3,405 3.0 22.8	1,509 3.0 -55.7	1,345 1.9 -10.9	2,656 3.3 97.5
가		1,032 0.9	800 1.6 -22.5	1,571 2.2 96.4	1,974 2.4 25.7
가	27,666 24.3	29,488 26.0 6.6	17,940 35.2 -39.2	29,796 41.1 66.1	23,993 29.6 -19.5
가	5,867 5.2	4,745 4.2 -19.1	2,267 4.4 -52.2	2,234 3.1 -1.5	2,002 2.5 -10.4
가	3,564 3.1	5,113 4.5 43.5	2,285 4.5 -55.3	2,319 3.2 1.5	2,906 3.6 25.3
가	6,369 5.6	8,089 7.1 27.0	2,539 5.0 -68.6	3,557 4.9 40.1	4,002 4.9 12.5
가	4,078 3.6	4,307 3.8 5.6	1,254 2.5 -70.9	2,740 3.8 118.5	2,721 3.4 -0.7
가	4,225 3.7	4,506 4.0 6.7	2,285 4.5 -49.3	3,053 4.2 33.6	2,391 2.9 -21.7
가	7,722 6.8	7,815 6.9 1.2	2,693 5.3 -65.5	3,943 5.4 46.4	4,957 6.1 25.7
가	12,077 10.6	11,385 10.0 -5.7	3,840 7.5 -66.3	4,297 5.9 11.9	6,356 7.8 47.9
가	1,468 1.3	1,446 1.3 -1.5	762 1.5 -47.3	1,141 1.6 49.7	1,256 1.5 10.1

< 4 >

(:)

	1997	1998	1999	2000	5
	524,059	298,342	406,372	145,920	
가	66,529 12.7	28,994 9.7 - 56.4	58,590 14.4 102.1	27,113 18.6	
가	35,468 6.8	21,116 7.1 - 40.5	18,319 4.5 - 13.2	9,897 6.8	
가	29,613 5.7	1,663 0.6 - 94.4	8,664 2.1 421.0	8,087 5.5	
가	14,625 2.8	9,042 3.0 - 38.2	9,262 2.3 2.4	4,360 3.0	
가	26,755 5.1	7,113 2.4 - 73.4	6,777 1.7 - 4.7	1,992 1.4	
가	9,127 1.7	10,418 3.5 14.1	22,742 5.6 118.3	1,369 0.9	
가	8,154 1.6	5,072 1.7 - 37.8	2,432 0.6 - 52.1	989 0.7	
가	115,304 22.0	109,654 36.8 - 4.9	166,741 41.0 52.1	42,044 28.8	
가	16,782 3.2	14,626 4.9 - 12.8	8,402 2.1 - 42.6	3,322 2.3	
가	23,948 4.6	14,149 4.7 - 40.9	10,980 2.7 - 22.4	8,218 5.6	
가	45,592 8.7	15,402 5.2 - 66.2	18,776 4.6 21.9	5,528 3.8	
가	21,194 4.0	5,000 1.7 - 76.4	14,052 3.5 181.0	6,451 4.4	
가	11,972 2.3	13,339 4.5 11.4	15,916 3.9 19.3	5,653 3.9	
가	40,849 7.8	15,566 5.2 - 61.9	18,265 4.5 17.3	9,696 6.6	
가	53,931 10.3	22,525 7.6 - 58.2	18,972 4.7 - 15.8	7,738 5.3	
가	4,216 0.8	4,663 1.6 10.6	7,482 1.8 60.5	3,463 2.4	

< 5 >

(: 10 , %)

		1994	1995	1996	1997	1998	1999
		19,923.0	22,294.1	27,261.0	28,935.1	18,234.6	19,041.8
		52,128.7	57,495.4	68,620.0	74,883.8	46,936.6	46,850.6
	가	40.5	40.2	39.7	37.3	38.1	40.5
		38.2	38.8	39.7	38.6	38.8	40.6
		6,355.1	6,510.5	9,760.6	8,601.1	5,243.6	4,947.7
		8,107.4	8,003.3	12,061.6	10,240.8	6,480.4	6,130.3
		78.4	81.3	80.9	84.0	80.9	80.7
		1,513.4	1,225.2	1,562.0	1,554.9	814.6	822.7
		3,823.5	3,378.1	4,088.1	4,507.6	2,336.8	2,008.6
		39.6	36.3	38.2	34.5	34.9	41.0
		1,612.3	1,689.5	1,799.3	1,688.0	531.0	565.0
		2,526.3	2,504.4	2,724.5	3,292.0	1,228.2	1,151.5
		63.8	67.5	66.0	51.3	43.2	49.1
		628.8	1,091.0	812.9	1,115.6	588.5	473.0
		1,686.7	3,281.4	2,889.1	4,045.6	3,120.4	1,954.2
		37.3	33.2	28.1	27.6	18.9	24.2
		501.8	856.9	583.7	692.7	348.7	404.8
		1,172.4	1,940.0	1,313.0	1,800.4	1,281.4	1,014.5
		42.8	44.2	44.5	38.5	27.2	39.9
		452.7	467.4	414.6	500.3	278.7	313.3
		1,211.0	1,640.2	1,451.7	2,578.6	1,208.7	1,462.1
		37.4	28.5	28.6	19.4	23.1	21.4
						140.2	163.8
						678.7	877.7
						20.7	18.7
		2,026.6	2,271.5	2,847.1	3,410.1	2,543.7	2,930.5
		10,296.1	12,269.1	14,617.9	14,383.8	11,081.5	12,545.8
		19.7	18.5	19.5	23.7	23.0	23.4
		496.8	681.5	918.6	1,087.5	964.0	907.1
		1,658.1	2,200.8	3,165.0	2,973.1	2,770.3	2,454.8
		30.0	31.0	29.0	36.6	34.8	37.0
		506.0	556.1	747.4	939.8	583.3	655.9
		1,533.8	1,777.6	2,046.0	3,348.7	1,739.7	1,427.1
		33.0	31.3	36.5	28.1	33.5	46.0
		691.0	734.8	945.1	1,102.0	772.3	906.6
		6,502.8	3,197.1	5,607.3	4,449.0	2,661.6	2,509.4
		10.6	23.0	16.9	24.8	29.0	36.1
		721.0	1,092.5	1,307.0	1,163.4	983.0	1,159.4
		1,915.1	2,281.2	3,022.8	2,916.4	2,501.4	2,399.8
		37.6	47.9	43.2	39.9	39.3	48.3
		947.6	1,137.3	1,477.1	1,837.5	1,557.7	1,446.8
		2,583.4	4,133.4	4,469.3	6,523.5	3,323.3	3,097.5
		36.7	27.5	33.0	28.2	46.9	46.7
		1,494.6	1,776.9	1,529.8	1,942.1	1,421.6	1,543.8
		3,240.1	4,423.9	4,560.1	6,150.3	3,182.9	3,376.3
		46.1	40.2	33.5	31.6	44.7	45.7
		1,630.8	1,875.2	2,215.5	2,841.3	1,160.7	1,466.4
		5,331.7	5,929.6	6,048.8	6,731.9	2,910.9	3,797.9
		30.6	31.6	36.6	42.2	39.9	38.6
		344.5	327.8	340.3	458.8	303.0	335.0
		540.3	535.3	554.8	942.1	430.4	643.1
		63.8	61.2	61.3	48.7	70.4	52.1

< 6 >

(:)

		1994	1995	1996	1997	1998	1999	2000
		2,651	2,966	3,543	3,887	4,199	5,137	7,971
		100	100	100	100	100	100	100
	가	59.7	11.9	19.5	9.7	8.0	22.3	55.2
		759	801	881	867	774	826	1,280
		29	27	25	22	18	16	16
	가	44	6	10	- 2	- 11	7	55
		203	239	252	261	225	263	401
		8	8	7	7	5	5	5
	가	38	18	5	4	- 14	17	52
		133	127	136	135	105	123	214
		5	4	4	3	3	2	3
	가	55	- 5	7	- 1	- 22	17	74
		120	144	159	154	139	160	256
		5	5	4	4	3	3	3
	가	62	20	10	- 3	- 10	15	60
		83	81	70	72	53	76	104
		3	3	2	2	1	1	1
	가	144	- 2	- 14	3	- 26	43	37
		79	68	74	79	72	94	142
		3	2	2	2	2	2	2
	가	88	- 14	9	7	- 9	31	51
							77	115
	가						1	1
								49
		316	395	460	550	661	852	1,296
		12	13	13	14	16	17	16
	가	82	25	16	20	20	29	52
		113	128	178	216	262	352	539
		4	4	5	6	6	7	7
	가	105	13	39	21	21	34	53
		111	114	148	160	216	266	433
		4	4	4	4	5	5	5
	가	95	3	30	8	35	23	63
		95	121	166	188	244	287	486
		4	4	5	5	6	6	6
	가	44	27	37	13	30	18	69
		98	121	153	224	255	278	451
		4	4	4	6	6	5	6
	가	75	23	26	46	14	9	62
		131	164	267	319	412	482	741
		5	6	8	8	10	9	9
	가	96	25	63	19	29	17	54
		152	172	241	265	338	485	714
		6	6	7	7	8	9	9
	가	46	13	40	10	28	43	47
		209	231	289	318	365	425	612
		8	8	8	8	9	8	8
	가	48	11	25	10	15	16	44
		49	60	69	79	78	91	187
		2	2	2	2	2	2	2
	가	69	22	15	14	- 1	17	105

< 7 >

(:)

		1994	1995	1996	1997	1998	1999	2000
		13,730	15,010	16,962	20,401	21,639	25,620	27,364
		100	100	100	100	100	100	100
	가	44.5	9.3	13.0	20.3	6.1	18.4	6.8
		4,499	4,580	4,971	5,876	5,843	6,726	6,954
		133	31	29	29	27	26	25
	가	31	2	9	18	- 1	15	3
		1,077	1,146	1,211	1,440	1,409	1,478	1,507
		8	8	7	7	7	6	6
	가	35	6	6	19	- 2	5	2
		580	624	691	797	798	908	966
		4	4	4	4	4	4	4
	가	44	8	11	15	0	14	6
		425	518	581	769	812	939	963
		3	3	3	4	4	4	4
	가	37	22	12	32	6	16	3
		535	574	598	668	618	653	665
		4	4	4	3	3	3	2
	가	84	7	4	12	- 7	6	2
		405	447	511	575	574	677	695
		3	3	3	3	3	3	3
	가	48	10	14	13	0	18	3
						417	464	513
	가					2	22	2
							11	11
		1,277	1,508	1,796	2,308	2,640	3,359	3,785
		9	10	11	11	12	13	14
	가	44	18	19	29	14	27	13
		394	487	602	780	862	1,105	1,205
		3	3	4	4	4	4	4
	가	46	24	24	30	11	28	9
		471	524	671	759	908	1,073	1,125
		3	3	4	4	4	4	4
	가	48	11	28	13	20	18	5
		494	638	765	934	1,007	1,201	1,346
		4	4	5	5	5	5	5
	가	60	29	20	22	8	19	12
		550	619	671	865	943	1,182	1,264
		4	4	4	4	4	5	5
	가	74	13	8	29	9	25	7
		715	841	1,048	1,230	1,543	1,839	2,023
		5	6	6	6	7	7	7
	가	77	18	25	17	25	19	10
		798	925	1,124	1,352	1,522	1,899	2,088
		6	6	7	7	7	7	8
	가	71	16	22	20	13	25	10
		1,232	1,258	1,378	1,667	1,345	1,660	1,801
		9	8	8	8	6	6	7
	가	47	2	10	21	- 19	23	8
		278	321	344	381	398	457	464
		2	2	2	2	2	2	2
	가	54	15	7	11	4	15	2

< 8 >

(:)

		2000 1/4	2000 2/4	2000 3/4	2000 4/4
		20,313	21,268	21,395	21,266 (100.0)
		4,207	4,214	4,240	4,312 (20.3)
		1,401	1,626	1,644	1,653 (7.8)
		4,500	4,557	4,596	4,585 (21.6)
		886	870	870	858 (4.0)
		304	345	365	362 (1.7)
		1,638	1,648	1,643	1,649 (7.8)
		390	386	379	381 (1.8)
		107	122	124	130 (0.6)
		1,046	1,078	1,087	1,098 (5.2)
		271	277	278	287 (1.4)
		76	88	88	90 (0.4)
		1,057	1,100	1,099	1,111 (5.2)
		339	339	341	349 (1.6)
		69	88	88	88 (0.4)
		512	527	532	532 (2.5)
		64	64	65	67 (0.3)
		50	55	56	55 (0.3)
		560	587	582	585 (2.8)
		75	80	79	81 (0.4)
		50	59	59	58 (0.3)
		434	454	453	462 (2.2)
		165	171	174	183 (0.9)
		21	25	28	29 (0.1)
		3,912	4,107	4,157	4,177 (19.6)
		1,002	1,012	1,012	1,038 (4.9)
		279	325	340	336 (1.6)
		625	684	692	664 (3.1)
		61	57	58	59 (0.3)
		57	67	68	67 (0.3)
		602	678	686	654 (3.1)
		120	126	131	133 (0.6)
		36	46	43	40 (0.2)
		827	936	936	889 (4.2)
		127	126	131	134 (0.6)
		50	61	58	60 (0.3)
		770	873	879	839 (4.0)
		100	102	104	105 (0.5)
		58	68	69	70 (0.3)
		988	1,016	999	991 (4.7)
		90	79	81	89 (0.4)
		58	72	64	66 (0.3)
		1,306	1,384	1,401	1,388 (6.5)
		222	218	217	226 (1.1)
		71	83	78	76 (0.4)
		1,279	1,370	1,382	1,361 (6.4)
		287	297	307	312 (1.5)
		93	96	91	97 (0.5)
		258	269	270	279 (1.3)
		10	10	10	10 (0.1)
		23	26	25	27 (0.1)

< 9> (2000 10)

(:)

	388,056	12,876	110,307	63,017	147,167	54,689
	106,752 27.5	6,618 51.4	31,870 28.9	14,772 23.4	39,687 27.0	13,805 25.2
	24,048 6.2	865 6.7	8,343 7.6	5,209 8.3	7,462 5.1	2,169 4.0
	18,989 4.9	452 3.5	6,763 6.1	3,865 6.1	5,875 4.0	2,034 3.7
	17,220 4.4	302 2.3	4,414 4.0	3,169 5.0	6,471 4.4	2,864 5.2
	20,341 5.2	249 1.9	6,092 5.5	4,104 6.5	7,191 4.9	2,705 4.9
	4,715 1.2	97 0.8	1,273 1.2	816 1.3	1,957 1.3	572 1.0
	14,325 3.7	327 2.5	4,659 4.2	2,417 3.8	4,886 3.3	2,036 3.7
	70,899 18.3	2,988 23.2	20,198 18.3	10,853 17.2	27,463 18.7	9,397 17.2
	12,340 3.2	111 0.9	2,911 2.6	1,609 2.6	5,900 4.0	1,809 3.3
	14,124 3.6	116 0.9	3,409 3.1	1,803 2.9	5,973 4.1	2,823 5.2
	12,985 3.3	94 0.7	2,529 2.3	1,743 2.8	5,320 3.6	3,299 6.0
	15,379 4.0	134 1.0	4,248 3.9	2,581 4.1	6,178 4.2	2,238 4.1
	18,022 4.6	56 0.4	3,341 3.0	3,150 5.0	7,332 5.0	4,143 7.6
	16,765 4.3	141 1.1	3,984 3.6	2,807 4.5	7,074 4.8	2,759 5.0
	16,726 4.3	283 2.2	5,125 4.6	3,087 4.9	6,580 4.5	1,651 3.0
	4,426 1.1	43 0.3	1,148 1.0	1,032 1.6	1,818 1.2	385 0.7
	194,871 50.2	9,908 76.9	56,482 51.2	28,794 45.7	73,621 50.0	26,066 47.7
	193,185 49.8	2,968 23.1	53,825 48.8	34,223 54.3	73,546 50.0	28,623 52.3
	206,390 53.2	8,910 69.2	63,414 57.5	34,352 54.5	73,529 50.0	26,185 47.9
	181,666 46.8	3,966 30.8	46,893 42.5	28,665 45.5	73,638 50.0	28,504 52.1
()	2,261	193	387	291	985	405
	390,317	13,069	110,694	63,308	148,152	55,094

		1994	1995	1996	1997	1998	1999
		52,156	57,597	68,740	74,915	47,070	47,158
		100.00	100.00	100.00	100.00	100.00	100.00
	가	20.66	10.43	19.35	8.98	- 37.17	0.19
		8,110	8,010	12,100	10,243	6,508	6,145
		15.55	13.91	17.60	13.67	13.83	13.13
	가	- 5.65	- 1.23	51.06	- 15.34	- 36.47	- 5.58
		3,825	3,381	4,090	4,510	2,341	2,012
		7.33	5.87	5.95	6.02	4.97	4.27
	가	25.03	- 11.61	20.95	10.27	- 48.09	- 14.06
		2,528	2,508	2,729	3,294	1,237	1,168
		4.85	4.35	3.97	4.40	2.63	2.48
	가	38.24	- 0.79	8.81	20.72	- 62.45	- 5.59
		1,688	3,283	2,891	4,047	3,122	1,956
		3.24	5.70	4.21	5.40	6.63	4.15
	가	- 14.99	94.46	- 11.95	39.99	- 22.87	- 37.34
		1,174	1,942	1,314	1,801	1,283	1,017
		2.25	3.37	1.91	2.40	2.72	2.16
	가	7.68	65.45	- 32.32	37.09	- 28.21	- 20.68
		1,213	1,643	1,454	2,580	1,211	1,464
		2.32	2.85	2.11	3.44	2.57	3.10
	가	- 2.19	35.47	- 11.52	77.50	- 53.08	20.95
						680	879
	가					1.44	1.86
							29.37
		10,300	12,326	14,664	14,386	11,134	12,769
		19.75	21.40	21.33	19.20	23.65	27.08
	가	15.69	19.67	18.97	- 1.89	- 22.61	14.69
		1,660	2,205	3,167	2,975	2,777	2,459
		3.18	3.83	4.61	3.97	5.90	5.21
	가	4.49	32.83	43.65	- 6.07	- 6.67	- 11.45
		1,535	1,779	2,048	3,351	1,742	1,429
		2.94	3.09	2.98	4.47	3.70	3.03
	가	14.78	15.91	15.11	63.61	- 48.03	- 17.94
		6,505	3,199	5,612	4,452	2,664	2,512
		12.47	5.55	8.16	5.94	5.66	5.33
	가	97.08	- 50.82	75.44	- 20.67	- 40.17	- 5.71
		1,917	2,287	3,032	2,919	2,517	2,415
		3.68	3.97	4.41	3.90	5.35	5.12
	가	26.84	19.32	32.55	- 3.72	- 13.77	- 4.04
		2,585	4,136	4,471	6,526	3,325	3,100
		4.96	7.18	6.50	8.71	7.06	6.57
	가	37.64	59.99	8.11	45.95	- 49.04	- 6.77
		3,242	4,428	4,563	6,153	3,185	3,381
		6.22	7.69	6.64	8.21	6.77	7.17
	가	17.96	36.57	3.04	34.86	- 48.23	6.15
		5,334	5,934	6,051	6,735	2,915	3,807
		10.23	10.30	8.80	8.99	6.19	8.07
	가	38.34	11.26	1.96	11.30	- 56.72	30.62
		541	536	556	943	432	645
		1.04	0.93	0.81	1.26	0.92	1.37
	가	77.28	- 1.02	3.79	69.58	- 54.23	49.29

		1994	1995	1996	1997	1998	1999
		52,147	57,586	68,730	74,904	47,060	47,148
	가	100	100	100	100	100	100
		20.7	10.4	19.4	9.0	- 37.2	0.2
		29,989	31,416	39,605	41,558	25,442	24,238
	가	57.5	54.6	57.6	55.5	54.1	51.4
		20.0	4.8	26.1	4.9	- 38.8	- 4.7
		2,533	2,510	3,505	3,070	1,555	1,968
	가	4.9	4.4	5.1	4.1	3.3	4.2
		19.4	- 0.9	39.6	- 12.4	- 49.3	26.6
		2,430	2,962	2,930	3,713	916	1,202
	가	4.7	5.1	4.3	5.0	1.9	2.5
		7.9	21.9	- 1.1	26.7	- 75.3	31.2
		1,371	2,097	1,815	2,108	1,358	797
	가	2.6	3.6	2.6	2.8	2.9	1.7
		17.2	52.9	- 13.5	16.2	- 35.6	- 41.4
		1,182	1,466	1,166	1,307	998	1,065
	가	2.3	2.5	1.7	1.7	2.1	2.3
		47.1	24.0	- 20.4	12.1	- 23.6	6.7
		826	921	790	818	448	580
	가	1.6	1.6	1.1	1.1	1.0	1.2
		1.9	11.5	- 14.2	3.6	- 45.2	29.4
						495	317
	가					1.1	0.7
							- 35.9
		3,337	3,593	4,822	5,261	4,448	5,217
	가	6.4	6.2	7.0	7.0	9.5	11.1
		48.0	7.7	34.2	9.0	- 15.5	17.3
		604	1,023	1,329	1,470	1,220	1,197
	가	1.2	1.8	1.9	2.0	2.6	2.5
		- 0.6	69.4	29.9	10.5	- 17.0	- 1.9
		931	740	833	1,132	692	866
	가	1.8	1.3	1.2	1.5	1.5	1.8
		17.6	- 20.5	12.5	35.9	- 38.9	25.3
		1,067	1,220	1,443	1,669	1,475	1,525
	가	2.0	2.1	2.1	2.2	3.1	3.2
		8.6	14.4	18.3	15.7	- 11.6	3.4
		958	1,634	1,573	1,395	1,513	1,604
	가	1.8	2.8	2.3	1.9	3.2	3.4
		12.9	70.6	- 3.8	- 11.3	8.4	6.1
		1,442	1,724	2,140	2,918	2,402	2,310
	가	2.8	3.0	3.1	3.9	5.1	4.9
		11.3	19.5	24.1	36.3	- 17.7	- 3.8
		2,172	3,184	2,804	4,482	2,079	2,039
	가	4.2	5.5	4.1	6.0	4.4	4.3
		30.5	46.6	- 12.0	59.9	- 53.6	- 1.9
		2,932	2,737	3,600	3,497	1,692	1,864
	가	5.6	4.8	5.2	4.7	3.6	4.0
		23.9	- 6.7	31.6	- 2.9	- 51.6	10.1
		373	395	375	507	327	360
	가	0.7	0.6	0.5	0.7	0.7	0.8
		45.5	- 3.7	4.2	35.5	- 35.5	9.9

		1994	1995	1996	1997	1998	1999
		49,879.7	58,710.0	72,153.7	78,282.5	67,385.3	67,899.3
		100	100	100	100	100	100
	가	21.0	17.7	22.9	7.8	- 14.0	0.8
		8,316.0	9,072.0	10,798.7	12,784.2	11,860.7	11,952.1
		16.7	15.5	15.0	16.3	17.6	17.6
	가	14.0	9.1	19.0	18.4	- 7.2	0.8
		3,353.9	4,169.0	5,146.4	4,841.8	3,798.8	3,454.9
		6.7	7.1	7.1	6.2	5.6	5.1
	가	25.7	24.3	23.4	- 5.9	- 21.5	- 9.1
		1,978.5	2,385.4	2,861.2	2,979.5	1,977.3	2,383.7
		4.0	4.1	4.0	3.8	2.9	3.5
	가	22.5	20.6	19.9	4.1	- 33.6	20.6
		1,897.5	2,363.1	3,350.9	4,220.4	4,121.8	3,994.6
		3.8	4.0	4.6	5.4	6.1	5.9
	가	9.5	24.5	41.8	25.9	- 2.3	- 3.1
		1,233.6	1,618.7	2,029.5	2,198.1	1,744.1	1,503.7
		2.5	2.8	2.8	2.8	2.6	2.2
	가	34.7	31.2	25.4	8.3	- 20.7	- 13.8
		1,552.1	1,285.7	1,677.5	2,030.5	2,151.4	2,025.7
		3.1	2.2	2.3	2.6	3.2	3.0
	가	- 9.3	- 17.2	30.5	21.0	6.0	- 5.8
						1,003.1	1,044.0
	가					1.5	1.5
		11,280.1	11,876.3	14,295.6	15,958.2	13,484.5	15,545.3
		22.6	20.2	19.8	20.4	20.0	22.9
	가	21.4	5.3	20.4	11.6	- 15.5	15.3
		1,618.9	1,970.7	2,823.8	3,606.8	3,334.6	3,073.4
		3.2	3.4	3.9	4.6	4.9	4.5
	가	8.2	21.7	43.3	27.7	- 7.5	- 7.8
		1,621.0	1,849.3	2,375.0	2,354.1	2,440.6	2,199.5
		3.2	3.1	3.3	3.0	3.6	3.2
	가	23.2	14.1	28.4	- 0.9	3.7	- 9.9
		3,267.2	4,735.7	6,404.3	5,817.0	4,403.2	3,936.2
		6.6	8.1	8.9	7.4	6.5	5.8
	가	30.7	44.9	35.2	- 9.2	- 24.3	- 10.6
		1,953.4	2,896.4	2,973.3	3,052.4	2,879.2	2,937.9
		3.9	4.9	4.1	3.9	4.3	4.3
	가	41.5	48.3	2.7	2.7	- 5.7	2.0
		2,545.0	3,432.5	4,415.8	4,850.9	4,908.9	4,008.2
		5.1	5.8	6.1	6.2	7.3	5.9
	가	16.6	34.9	28.6	9.9	1.2	- 18.3
		3,384.5	4,349.5	5,025.8	5,449.0	4,302.3	4,638.3
		6.8	7.4	7.0	7.0	6.4	6.8
	가	27.0	28.5	15.5	8.4	- 21.0	7.8
		5,414.1	6,269.7	7,434.6	7,356.3	4,369.2	4,496.4
		10.9	10.7	10.3	9.4	6.5	6.6
	가	33.2	15.8	18.6	- 1.1	- 40.6	2.9
		463.9	435.3	541.3	783.3	605.6	705.4
		0.9	0.7	0.8	1.0	0.9	1.0
	가	22.0	- 6.2	24.4	44.7	- 22.7	16.5

		1994	1995	1996	1997	1998	1999
		49,872.5	58,703.0	72,144.0	78,271.4	67,374.9	67,888.0
		100	100	100	100	100	100
	가	21.0	17.7	22.9	8.5	- 14.0	0.8
		28,975.9	34,530.7	42,231.6	45,011.1	39,193.0	37,957.1
		58.1	58.8	58.5	57.5	58.2	55.9
	가	21.0	19.2	22.3	6.6	- 12.9	- 3.2
		2,273.9	2,550.7	2,977.5	3,052.1	2,503.2	3,271.4
		4.6	4.3	4.1	3.9	3.7	4.8
	가	11.9	12.2	16.7	2.5	- 18.0	30.7
		2,310.4	2,633.5	3,184.3	3,404.6	1,637.9	2,312.1
		4.6	4.5	4.4	4.3	2.4	3.4
	가	23.6	14.0	20.9	6.9	- 5.1.9	41.2
		1,325.4	1,665.4	1,964.3	2,092.5	1,269.1	984.9
		2.7	2.8	2.7	2.7	1.9	1.4
	가	41.4	25.7	17.9	6.5	- 39.4	- 25.2
		1,170.5	1,387.7	1,773.3	1,729.8	1,399.3	1,403.1
		2.3	2.4	2.5	2.2	2.1	2.1
	가	20.0	18.6	27.8	- 2.5	- 19.1	0.3
		940.2	869.7	818.9	957.3	849.5	886.5
		1.9	1.5	1.1	1.2	1.3	1.3
	가	10.7	- 7.5	- 5.8	16.9	- 11.3	4.4
						733.8	599.0
	가					1.1	0.9
		2,851.7	3,499.7	4,517.4	5,610.7	5,158.0	5,505.7
		5.7	6.0	6.3	7.2	7.7	8.1
	가	33.1	22.7	29.1	24.2	- 8.1	6.7
		596.0	849.7	1,212.0	1,511.3	1,560.6	1,470.7
		1.2	1.4	1.7	1.9	2.3	2.2
	가	1.2	42.6	42.6	24.7	3.3	- 5.8
		817.5	907.4	1,082.2	1,180.5	843.6	1,007.5
		1.6	1.5	1.5	1.5	1.3	1.5
	가	26.8	11.0	19.3	9.1	- 28.5	19.4
		1,117.3	1,078.5	1,611.0	1,797.8	1,842.8	2,165.2
		2.2	1.8	2.2	2.3	2.7	3.2
	가	26.0	- 3.5	49.4	11.6	2.5	17.5
		1,041.6	1,382.2	1,722.5	1,766.4	1,968.8	1,749.3
		2.1	2.4	2.4	2.3	2.9	2.6
	가	29.0	32.7	24.6	2.5	11.5	- 11.1
		1,285.3	1,565.4	2,013.2	2,731.9	2,576.5	2,913.0
		2.6	2.7	2.8	3.5	3.8	4.3
	가	7.8	21.8	28.6	35.7	- 5.7	13.1
		1,857.3	2,559.2	2,890.6	2,948.2	2,979.8	2,627.6
		3.7	4.4	4.0	3.8	4.4	3.9
	가	20.9	37.8	12.9	2.0	1.1	- 11.8
		3,005.1	2,924.0	3,799.6	4,067.6	2,505.6	2,704.3
		6.0	5.0	5.3	5.2	3.7	4.0
	가	17.9	- 2.7	29.9	7.1	- 38.4	7.9
		304.4	299.2	345.6	409.6	353.4	366.6
		0.6	0.5	0.5	0.5	0.5	0.5
	가	20.3	- 1.7	15.5	18.5	- 13.7	3.7

< 14> 1 50

(: 10)

		1994	1995	1996	1997	1998	1999
		24,958	25,286	31,219	34,553	19,949	20,751
		24	1	23	11	- 42	4
		21,684	20,965	27,326	29,031	17,608	18,330
	가	87	83	88	84	88	88
		32	- 3	30	6	- 39	4
		214	0	350	172	6	0
	가	1	0	1	0	0	0
		- 39	- 100		- 51	- 96	- 100
		670	1,033	1,414	1,556	246	239
	가	3	4	5	5	1	1
		- 26	54	37	10	- 84	- 3
		129	471	0	1	0	0
	가	1	2	0	0	0	0
		- 49	265	- 100		- 71	- 100
		575	605	351	420	0	497
	가	2	2	1	1	0	2
		75	5	- 42	20	- 100	
		37	0	0	0	0	185
	가	0	0	0	0	0	1
		- 78					
		0	0	0	0	182	50
	가					1	0
							- 72
		271	0	347	122	566	542
	가	1	0	1	0	3	3
			- 100		- 65	362	- 4
		20	0	0	0	0	0
	가	0	0	0	0	0	0
			- 100				
		39	120	0	0	1	0
	가	0	0	0	0	0	0
		- 80	205	- 100			- 100
		18	0	0	354	340	199
	가	0	0	0	1	2	1
			- 100			- 4	- 41
		81	263	0	84	289	76
	가	0	1	0	0	1	0
			223	- 100		245	- 74
		47	0	0	240	14	0
	가	0	0	0	1	0	0
		- 90	- 100			- 94	- 100
		563	1,454	940	2,445	552	481
	가	2	6	3	7	3	2
		63	158	- 35	160	- 77	- 13
		594	376	491	127	144	151
	가	2	1	2	0	1	1
		- 16	- 37	31	- 74	14	5
		17	0	0	0	0	0
	가	0	0	0	0	0	0
			- 100				

	1994	1995	1996	1997	1998	1999
	37,203,763	45,610,764	54,965,110	62,017,618	62,702,417	66,943,982
가	5,756,451 15.5 10.9	6,978,908 15.3 21.2	8,948,087 16.3 28.2	9,771,922 15.8 9.2	8,795,971 14.0 - 10.0	9,654,293 14.4 9.8
가	2,311,286 6.2 18.1	2,674,627 5.9 15.7	2,931,345 5.3 9.6	3,111,517 5.0 6.1	2,936,156 4.7 - 5.6	3,453,514 5.2 17.6
가	1,625,828 4.4 35.8	1,979,597 4.3 21.8	2,163,623 3.9 9.3	2,701,0161 4.4 24.8	2,658,361 4.2 - 1.6	2,708,004 4.0 1.9
가	1,272,637 3.4 10.1	1,720,417 3.8 35.2	1,899,814 3.5 10.4	2,057,938 3.3 8.3	2,069,496 3.3 0.6	2,378,144 3.6 14.9
가	926,564 2.5 19.3	1,084,144 2.4 17.0	1,349,613 2.5 24.5	1,581,235 2.5 17.2	1,551,864 2.5 - 1.9	1,607,155 2.4 3.6
	937,291 2.5	1,057,799 2.3	1,114,134 2.0	1,194,851 1.9	1,190,384 1.9	1,293,7361 1.9
가				975,984 1.6	871,602 1.4 - 10.7	1,098,999 1.6 26.1
가	6,567,275 17.7 35.1	7,902,437 17.3 20.3	9,959,057 18.1 26.0	11,025,261 17.8 10.7	11,283,212 18.0 2.3	12,348,608 18.4 9.4
가	1,958,935 5.3 33.7	2,481,800 5.4 26.7	3,429,759 6.2 38.2	3,892,834 6.3 13.5	3,906,763 6.2 0.4	4,315,095 6.4 10.5
가	1,582,445 4.3 39.3	2,007,058 4.4 26.8	2,387,425 4.3 19.0	2,683,638 4.3 12.4	2,969,124 4.7 10.6	2,796,884 4.2 - 5.8
가	2,021,822 5.4 32.9	2,907,180 6.4 43.8	3,257,594 5.9 12.1	3,565,279 5.7 9.4	3,781,609 6.0 6.1	3,947,632 5.9 4.4
가	2,256,217 6.1 40.7	2,792,800 6.1 23.8	3,249,123 5.9 16.3	3,619,749 5.8 11.4	3,689,136 5.9 1.9	3,645,232 5.4 - 1.2
가	2,570,104 6.9 30.6	3,231,106 7.1 25.7	3,968,303 7.2 22.8	4,754,425 7.7 19.8	5,000,055 8.0 5.2	5,152,471 7.7 3.0
가	3,266,130 8.8 40.9	3,698,812 8.1 13.2	4,381,434 8.0 18.5	4,906,735 7.9 12.0	5,745,491 9.2 17.1	5,743,402 8.6 0.0
가	3,594,363 9.7 31.6	4,361,730 9.6 21.3	5,050,024 9.2 15.8	5,017,704 8.1 - 0.6	5,132,955 8.2 2.3	5,540,010 8.3 7.9
가	556,415 1.5 26.2	732,349 1.6 31.6	875,775 1.6 19.6	1,157,530 1.9 32.2	1,120,238 1.8 - 3.2	1,260,803 1.9 12.5

	1994	1995	1996	1997	1998	1999
	30,340,463	35,791,848	42,934,606	50,532,088	51,520,538	54,496,739
가	4,803,398 15.8 6.7	5,391,544 15.1 12.2	7,069,592 16.5 31.1	8,538,948 16.9 20.8	8,119,430 15.8 -4.9	8,466,971 15.5 4.3
가	2,036,385 6.7 22.8	2,289,472 6.4 12.4	2,485,687 5.8 8.6	2,802,825 5.5 12.8	2,631,226 5.1 -6.1	2,993,560 5.5 13.8
가	1,315,513 4.3 36.4	1,666,003 4.7 26.6	1,770,648 4.1 6.3	2,255,174 4.5 27.4	2,219,131 4.3 -1.6	2,279,211 4.2 2.7
가	987,503 3.3 17.4	1,375,142 3.8 39.3	1,631,724 3.8 18.7	1,771,557 3.5 8.6	1,756,967 5.1 -0.8	2,050,833 3.8 16.7
가	715,369 2.4 15.0	803,193 2.2 12.3	956,454 2.2 19.1	1,237,023 2.4 29.3	1,226,502 2.4 -0.9	1,309,021 2.4 6.7
가	780,353 2.6 24.9	860,984 2.4 10.3	952,849 2.2 10.7	1,066,085 2.1 11.9	1,048,838 2.0 -1.6	1,120,479 2.1 6.8
가				634,209.0 1.3	666,601.0 1.3 5.1	855,164.0 1.6 28.3
가	4,835,520 15.9 28.1	5,467,261 15.3 13.1	7,006,373 16.3 28.2	8,064,252 16.0 15.1	8,563,692 16.6 6.2	9,075,576 16.7 6.0
가	1,619,073 5.3 28.7	1,929,682 5.4 19.2	2,555,785 6.0 32.4	3,056,440 6.0 19.6	3,110,851 6.0 1.8	3,384,511 6.2 8.8
가	1,239,095 4.1 31.7	1,530,850 4.3 23.5	1,857,283 4.3 21.3	2,149,866 4.3 15.8	2,350,571 4.6 9.3	2,266,537 4.2 -3.6
가	1,730,631 5.7 30.6	2,290,763 6.4 32.4	2,673,122 6.2 16.7	2,944,010 5.8 10.1	3,036,522 5.9 3.1	3,201,005 5.9 5.4
가	1,840,774 6.1 40.0	2,259,581 6.3 22.8	2,585,323 6.0 14.4	2,996,714 5.9 15.9	3,110,649 6.0 3.8	3,030,001 5.6 -2.6
가	2,203,186 7.3 27.6	2,693,214 7.5 22.2	3,210,826 7.5 19.2	3,889,120 7.7 21.1	4,101,878 8.0 5.5	4,207,616 7.7 2.6
가	2,788,560 9.2 39.1	3,085,575 8.6 10.7	3,571,636 8.3 15.8	4,129,963 8.2 15.6	4,559,149 8.8 10.4	4,753,357 8.7 4.3
가	2,950,611 9.7 30.3	3,502,793 9.8 18.7	3,838,587 8.9 9.6	4,025,025 8.0 4.9	4,031,274 7.8 0.2	4,399,495 8.1 9.1
가	494,492 1.6 24.1	645,791 1.8 30.6	768,717 1.8 19.0	966,877 1.9 25.8	987,257 1.9 2.1	1,103,402 2.0 11.8

(: %)

	1996	1997	1998	1999
가	69.5	63.2 - 9.1	63.9 1.1	63.8 - 0.2
가	97.9	98.3 0.4	95.2 - 3.2	90.7 - 4.7
가	89.3	85.3 - 4.5	78.2 - 8.3	72.0 - 7.9
가	84.5	69.2 - 18.1	65.1 - 5.9	72.9 12.0
가	86.7	82.6 - 4.7	78.7 - 4.7	74.1 - 5.8
가	73.8	69.1 - 6.4	74.0 7.1	69.5 - 6.1
가	83.5	70.7 - 15.3	68.1 - 3.7	72.1 5.9
가		88.2	77.3 - 12.4	73.7 - 4.7
가	84.9	81.4 - 4.1	80.0 - 1.7	76.5 - 4.4
가	41.7	35.4 - 15.1	47.3 33.6	44.2 - 6.6
가	56.0	44.5 - 20.5	48.5 9.0	54.5 12.4
가	49.8	35.2 - 29.3	44.6 26.7	48.3 8.3
가	43.4	33.0 - 24.0	44.4 34.5	42.5 - 4.3
가	38.0	29.8 - 21.6	40.4 35.6	41.4 2.5
가	47.7	38.0 - 20.3	41.1 8.2	49.6 20.7
가	61.1	47.3 - 22.6	53.7 13.5	53.9 0.4
가	46.0	38.0 - 17.4	49.1 29.2	42.0 - 14.5

< 18 > 가

(: %)

	1994	1995	1996	1997	1998	1999	2000	
	- 0.57	0.55	0.95	0.31	- 13.60	2.94	0.67	- 0.46
	- 0.35	0.67	1.12	0.68	- 12.15	3.50	1.49	0.23
	- 0.18	1.08	0.98	0.81	- 8.85	4.59	1.73	0.42
	- 1.36	0.18	0.94	0.29	- 16.25	2.66	0.05	- 1.38
	- 0.35	0.14	0.40	- 0.90	- 16.52	1.24	- 0.53	- 1.02
	0.87	1.27	1.09	- 0.71	- 15.24	1.93	- 1.05	- 0.85
	0.07	0.58	0.78	0.28	- 13.79	3.51	1.07	0.88
	- 0.26	1.44	1.16	0.67	- 10.25	1.30	- 0.31	0.36
	- 0.59	- 0.47	0.16	0.12	- 8.36	0.38	- 0.24	- 0.29
				0.03	- 13.54	1.50	- 0.26	- 3.07
	- 0.26	1.46	1.20	0.65	- 14.65	4.52	1.92	0.25
	- 0.11	1.13	1.26	0.77	- 8.30	2.50	1.39	0.20
	- 0.40	0.39	0.77	1.02	- 7.13	4.10	1.12	0.97
	- 0.48	- 0.27	1.08	1.13	- 7.11	3.18	1.18	0.30
	- 0.60	0.48	1.13	0.57	- 5.60	2.17	1.13	0.44
	- 0.54	0.20	0.83	0.69	- 6.96	4.50	1.94	- 0.05
	0.63	0.72	1.25	0.38	- 10.76	2.73	0.72	- 0.21
	- 0.64	0.56	0.98	0.26	- 14.12	2.21	1.15	- 0.15
	- 0.39	- 0.15	0.30	0.38	- 8.13	6.82	2.18	0.30
	- 0.52	0.74	0.97	0.41	- 14.90	3.56	1.01	- 0.08
	- 0.24	0.45	0.87	0.34	- 10.16	2.66	0.65	- 0.05
	- 0.27	0.52	0.76	- 0.03	- 13.42	1.79	- 0.18	- 0.39
	- 0.31	0.50	0.98	0.65	- 9.20	3.64	1.41	0.23

(: , %)

	1975	1980	1985	1990	1995
	34,706,620	37,436,315	40,448,486	43,410,899	44,608,726
가	6,889,502 19.9	8,364,379 22.3	9,639,110 23.8	10,612,577 24.4	10,231,217 22.9
가	2,453,173 7.1	3,159,766 8.4	3,514,798 8.7	3,798,113 8.7	3,814,325 8.6
가			2,029,853 5.0	2,229,040 5.1	2,449,420 5.5
가			1,386,911 3.4	1,817,919 4.2	2,308,188 5.2
가				1,139,003 2.6	1,257,636 2.8
가				1,049,578 2.4	1,272,121 2.9
가	4,039,132 11.6	4,933,862 13.2	4,794,135 11.9	6,155,632 14.2	7,649,741 17.1
가	1,861,560 5.4	1,790,954 4.8	1,724,809 4.3	1,580,430 3.6	1,466,238 3.3
가	1,522,203 4.4	1,424,083 3.8	1,391,004 3.4	1,389,686 3.2	1,396,728 3.1
가	2,948,553 8.5	2,956,214 7.9	3,001,179 7.4	2,013,926 4.6	1,766,854 4.0
가	2,456,403 7.1	2,287,689 6.1	2,202,078 5.4	2,069,960 4.8	1,902,044 4.3
가	3,984,123 11.5	3,779,736 10.1	3,748,428 9.3	2,507,439 5.8	2,066,842 4.6
가	4,858,551 14.0	4,954,559 13.2	3,010,945 7.4	2,860,595 6.6	2,676,312 6.0
가	3,280,052 9.5	3,322,132 8.9	3,516,660 8.7	3,672,396 8.5	3,845,622 8.6
가	411,732 1.2	462,941 1.2	488,576 1.2	514,605 1.2	505,438 1.1
가		2.4	1.1	1.0	-0.4

	1994	1995	1996	1997	1998	1999	2000
	1,019,301	1,636,781	1,486,938	1,061,051	1,255,877	960,548	319,790
가	0.0	1,014 0.1	9,325 0.6 819.6	5,052 0.5 -45.8	48,270 3.8 855.5	37,823 3.9 -21.6	9,300 2.9 -75.4
가	139,913 13.7 124.1	182,519 11.2 30.5	160,872 10.8 -11.9	125,504 11.8 -22.0	134,442 10.7 7.1	85,298 8.9 -36.6	27,385 8.6 -67.9
가	5,179 0.5 38.4	26,809 1.6 417.6	42,562 2.9 58.8	48,957 4.6 15.0	64,757 5.2 32.3	52,139 5.4 -19.5	15,140 4.7 -71.0
가	19,333 1.9 46.3	76,288 4.7 294.6	76,657 5.2 0.5	17,283 1.6 -77.5	29,047 2.3 68.1	24,784 2.6 -14.7	6,311 2.0 -74.5
가	30,795 3.0 150.9	87,226 5.3 183.2	77,862 5.2 -10.7	60,145 5.7 -22.8	77,984 6.2 29.7	50,999 5.3 -34.6	18,610 5.8 -63.5
가	33,235 3.3 -2.9	62,795 3.8 88.9	17,696 1.2 -71.8	12,552 1.2 -29.1	25,311 2.0 101.6	23,535 2.5 -7.0	14,201 4.4 -39.7
가	0.0	0.0	0.0	36,043 3.4	63,040 5.0 74.9	53,906 5.6 -14.5	18,885 5.9 -65.0
가	89,775 8.8 47.4	223,076 13.6 148.5	229,333 15.4 2.8	138,876 13.1 -39.4	228,692 18.2 64.7	195,705 20.4 -14.4	81,301 25.4 -58.5
가	70,183 6.9 41.4	124,411 7.6 77.3	144,428 9.7 16.1	83,505 7.9 -42.2	79,722 6.3 -4.5	69,322 7.2 -13.0	15,582 4.9 -77.5
가	103,557 10.2 58.5	149,129 9.1 44.0	75,024 5.0 -49.7	42,875 4.0 -42.9	51,146 4.1 19.3	37,507 3.9 -26.7	11,766 3.7 -68.6
가	134,813 13.2 136.6	211,153 12.9 56.6	168,622 11.3 -20.1	96,968 9.1 -42.5	64,225 5.1 -33.8	50,071 5.2 -22.0	19,248 6.0 -61.6
가	78,852 7.7 74.8	91,067 5.6 15.5	81,052 5.5 -11.0	77,829 7.3 -4.0	90,401 7.2 16.2	55,847 5.8 -38.2	12,953 4.1 -76.8
가	127,719 12.5 67.3	130,713 8.0 2.3	84,966 5.7 -35.0	59,295 5.6 -30.2	65,325 5.2 10.2	45,236 4.7 -30.8	13,574 4.2 -70.0
가	65,623 6.4 35.2	100,446 6.1 53.1	115,124 7.7 14.6	100,150 9.4 -13.0	103,168 8.2 3.0	80,070 8.3 -22.4	24,700 7.7 -69.2
가	104,786 10.3 -2.0	154,412 9.4 47.4	187,497 12.6 21.4	145,529 13.7 -22.4	120,581 9.6 -17.1	91,055 9.5 -24.5	28,535 8.9 -68.7
가	15,538.0 1.5 26.0	15,723.0 1.0 1.2	15,918.0 1.1 1.2	10,488.0 1.0 -34.1	9,766.0 0.8 -6.9	7,251.0 0.8 -25.8	2,299.0 0.7 -68.3

< 21-1 >

(: %, %)

	1996			1997			1998		
	/ 가	/ 가	/ 가	/ 가	/ 가	/ 가	/ 가	/ 가	/ 가
	75	91.4	95.3	75.4 0.4	92.2 0.8	96 0.7	76.9 1.5	93.9 1.7	97.7 1.7
	59.2	89.2	93.2	59.5 0.3	90.5 1.3	94.5 1.3	60.6 1.1	92.2 1.7	96.2 1.7
	64.1	85.3	94.7	65.2 1.1	86.1 0.8	95.4 0.7	66.7 1.5	87.6 1.5	96.9 1.5
	65.5	82.7	87	68.5 3.0	86.2 3.5	90.3 3.3	71.4 2.9	89.5 3.3	93.6 3.3
	81.1	94	97.7	80.6 -0.5	93.7 -0.3	97.2 -0.5	80.5 -0.1	93.8 0.1	97.3 0.1
	75.2	87.7	89.5	78.8 3.6	91.4 3.7	93.1 3.6	80.3 1.5	92.9 1.5	94.5 1.4
	78.4	91.8	95.1	78 -0.4	93.6 1.8	96.8 1.7	77.9 -0.1	94.5 0.9	97.6 0.8
	75.1	93.3	97.2	75.3 0.2	93.6 0.3	97.3 0.1	79 3.7	97.6 4.0	101.2 3.9
	89.9	95.9	99.5	91.6 1.7	98.6 2.7	102.1 2.6	91.6 0.0	89.9 -8.7	102.3 0.2
	89	97	98.8	89 0.0	97.7 0.7	99.5 0.7	89.5 0.5	98.7 1.0	100.4 0.9
	92.9	97.5	99.4	92.8 -0.1	98.1 0.6	100 0.6	94.2 1.4	99.8 1.7	101.7 1.7
	89.8	94.4	96.2	90 0.2	94.8 0.4	96.6 0.4	89.8 -0.2	94.7 -0.1	96.4 -0.2
	94.1	97.2	98.5	92.2 -1.9	95.4 -1.8	96.6 -1.9	90.7 -1.5	93.8 -1.6	95 -1.6
	97.6	92.1	94.3	86.6 -11.0	91.6 -0.5	93.8 -0.5	87.5 0.9	92.4 0.8	94.5 0.7
	79.8	93.1	97.6	79.9 0.1	93.2 0.1	97.6 0.0	91.9 12.0	95.3 2.1	99.6 2.0
	77.5	84.2	88.1	77.7 0.2	84.5 0.3	88.3 0.2	77.5 -0.2	84.2 -0.3	87.9 -0.4

: 1) 가 가 가 , 가 , 가 가 .

2) 가 .

$$= \frac{\text{가} - (\text{가} + \text{가} + \text{가})}{\text{가}} \times 100$$

< 21-2>

(: %, %)

	1996			1997			1998		
	/ 가	/ 가	/ 가	/ 가	/ 가	/ 가	/ 가	/ 가	/ 가
	69.2	104.3	108.9	69.6 0.4	105.8 1.5	110.4 1.5	70.8 1.2	107.8 2.0	112.4 2.0
	72.4	96.6	107.3	73.8 1.4	97.6 1.0	108.1 0.8	75.6 1.8	99.3 1.7	109.8 1.7
	75.4	95.2	100	79.8 4.4	99.1 3.9	103.9 3.9	82.1 2.3	102.9 3.8	107.7 3.8
	91.7	106.3	110.4	91.1 -0.6	106 -0.3	109.9 -0.5	91 -0.1	106.1 0.1	110 0.1
	86.8	101.3	103.3	90.9 4.1	105.6 4.3	107.5 4.2	92.7 1.8	107.2 1.6	109.1 1.6
	90.7	106.3	110.1	90.3 -0.4	108.3 2.0	112 1.9	90.1 -0.2	109.4 1.1	113 1.0
	85.5	106.3	110.7	85.7 0.2	106.6 0.3	110.8 0.1	90 4.3	111.1 4.5	115.3 4.5
	108.3	115.6	119.9	110.4 2.1	118.8 3.2	123 3.1	110.3 -0.1	119.2 0.4	123.3 0.3
	104.7	114.2	116.3	104.8 0.1	115.1 0.9	117.2 0.9	105.3 0.5	116.2 1.1	118.2 1.0
	109	114.3	116.6	108.8 -0.2	115.1 0.8	117.3 0.7	110.4 1.6	117.1 2.0	119.2 1.9
	106.2	111.6	113.8	106.5 0.3	112.2 0.6	114.2 0.4	106.2 -0.3	112 -0.2	114 -0.2
	113.9	117.7	119.3	111.7 -2.2	115.5 -2.2	117 -2.3	109.8 -1.9	113.5 -2.0	115 -2.0
	106.3	111.8	114.4	105.4 -0.9	111.2 -0.6	113.8 -0.6	106.1 0.7	112.1 0.9	114.7 0.9
	94.4	110	115.4	94.4 0.0	110.2 0.2	115.3 -0.1	96.8 2.4	112.7 2.5	117.8 2.5
	94	102.1	106.8	94.2 0.2	102.4 0.3	107 0.2	93.9 -0.3	102.1 -0.3	106.5 -0.5
	87.4	106.5	111	87.9 0.5	107.5 1.0	111.8 0.8	89.6 1.7	109.5 2.0	113.8 2.0

: 1) 가 가 ()가 .

2) 가 .

$$= \frac{(\text{가} - \text{가})}{\text{가}} \times 100$$