

Central Washington University ScholarWorks@CWU

CWU Theatre Programs

CWU Theatre Arts Collections

3-2014

"Polaroid Stories" Program

Central Theatre Ensemble

Central Washington University

Follow this and additional works at: http://digitalcommons.cwu.edu/cwu_theatre_arts

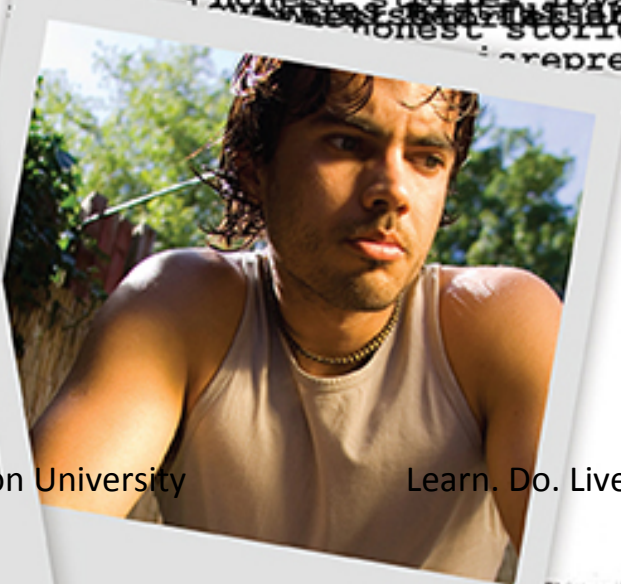
Recommended Citation

Central Theatre Ensemble and Central Washington University, "'Polaroid Stories' Program" (2014). *CWU Theatre Programs*. Book 13. http://digitalcommons.cwu.edu/cwu_theatre_arts/13

This Book is brought to you for free and open access by the CWU Theatre Arts Collections at ScholarWorks@CWU. It has been accepted for inclusion in CWU Theatre Programs by an authorized administrator of ScholarWorks@CWU.



lies truths facts misguided correct
 lies truths facts misguided correct fake real
 lies truths facts misguided correct
 Naomí Iizuka's
**polaroid
 stories**
 honest
 honest stories loyalties mistrust
 represented overdraft
 lt
 ties mistrusts





Proudly providing premiere
accommodations for all
College of Arts and Humanities'
visiting scholars and artists.

*where the fun is ripe for the picking...
welcome to the Hampton Inn Ellensburg*

2705 Triple L Loop, Ellensburg, Washington, USA 98926
Tel: 1-509-933-1600

Welcome...

It is with great pleasure that we look forward to this 2013-2014 Central Theatre Ensemble (CTE) season. This year CTE collaborates with many local groups to offer our campus and community an unusually diverse selection of dramatic, musical, and dance productions for all ages. These productions support this year's college theme of our **connections with the local community/global communities** and grow out of an outstanding academic program in theatre arts that is known regionally for its hands-on, experiential education.

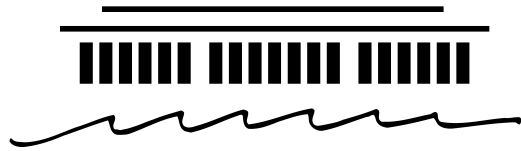


Starting as freshmen, students have the opportunity to participate in all aspects of theatre production, and to experience many unique and innovative programs. For example, Central's Department of Theatre Arts has the only musical theatre program in the state, the only Bachelor of Fine Arts theatre degree in the state, and the only theatre studies master's program in the state.

We are proud of the many outstanding accomplishments of our theatre arts faculty and students, and hope you will enjoy their productions this season.

Marji Morgan, Dean-College of Arts and Humanities





The Kennedy Center

THE JOHN F. KENNEDY CENTER FOR THE PERFORMING ARTS

The Kennedy Center American College Theater Festival[™] 46,

part of the *Rubenstein Arts Access Program*,

is generously funded by **David and Alice Rubenstein**.

Additional support is provided by

The Honorable Stuart Bernstein and Wilma E. Bernstein; Dr. Gerald and Paula McNichols Foundation; the National Committee for the Performing Arts; The Harold and Mimi Steinberg Charitable Trust; and Beatrice and Anthony Welters and the AnBryce Foundation.

This production is entered in the Kennedy Center American College Theater Festival (KCACTF). The aims of this national theater education program are to identify and promote quality in college-level theater production. To this end, each production entered is eligible for a response by a regional KCACTF representative, and selected students and faculty are invited to participate in KCACTF programs involving scholarships, internships, grants and awards for actors, directors, dramaturgs, playwrights, designers, stage managers and critics at both the regional and national levels.

Productions entered on the Participating level are eligible for invitation to the KCACTF regional festival and may also be considered for national awards recognizing outstanding achievement in production, design, direction and performance.

Last year more than 1,300 productions were entered in the KCACTF involving more than 200,000 students nationwide. By entering this production, our theater department is sharing in the KCACTF goals to recognize, reward, and celebrate the exemplary work produced in college and university theaters across the nation.

the KCACTF goals to recognize, reward, and celebrate the exemplary work produced in college and university theaters across the nation.

A new production of
BOUBLIL and SCHÖNBERG'S
Les Misérables

Les Misérables is licensed by Music Theatre International (MTI) by arrangement with CAMERON MACKINTOSH LTD.
©1988 CMOL



Epic, grand, and uplifting,
Les Misérables packs an
emotional wallop that has
thrilled audiences all over
the world.

cwu.edu/theatre/tickets

May 9, 10, 15, 16, & 17 at 7:30 p.m.
and May 11 & 18 at 2:00 p.m.
McConnell Auditorium

Reserved Seating
\$20/15 Adult • \$18/12 Senior/Student • \$7 CWU Student w/ID

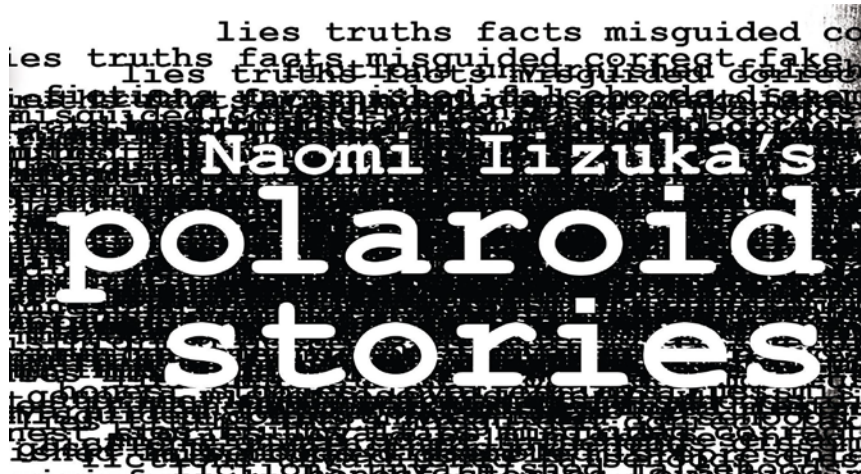
Les Misérables is presented through special arrangement with Music Theatre International (MTI).
All authorized performance materials are supplied by MTI, 421 West 54th Street, New York, NY 10019
Phone: 212-541-4684 Fax: 212-397-4684 www.mti.org



CWU is an AA/EEO/Title IX Institution.
For accommodation e-mail: DS@cwu.edu 09220613A

Learn. Do. Live.

Central
Washington
University



Director Patrick Dizney
 Scenic Designer/ Artist Cayla Raymaker*
 Costume Designer Shelbi Gilmond*
 Lighting Designer Jennifer Groce*
 Sound Designer Avril Martinez*
 Properties Master James Tyler*, Jordyn Brown*
 Fight Choreographer George Bellah III

 Assistant Director Chelsea Roberts+
 Fight Captain Monica Domena*

 Stage Manager Greg Scheopner
 Assistant Stage Manager Renae Budmats
 Rachel Culbertson

*BFA Candidate

+ MA Candidate

Cast

Orpheus (also Tereus) Chad Oswald*
Echo..... Emily Dale
Philomel Hannah Chandley*
D (dionysus) JJ Hernandez*
Narcissus Jordan Michael Whidbey*
Skinhead Girl (a.k.a. neon girl) Lauren Allen
Persephone (also Semele)..... Monica Domena*
G (a.k.a. zeus, hades)..... Sean McGehee*
Eurydice Skyler Gahley*
Skinhead Boy (a.k.a. Oklahoma boy/ speedracer) Travis Franks*

Song Credits:

Conciencia by Gilberto Santa Rosa
Courtesy of Sony Music
Entertainment Colombia S.A

Last Dance by Noisuf-X
Courtesy of Broken Silence Rec.

Feel Stronger by Gemini
Courtesy of Inspected Records

Tu con El by Frankie Ruiz
Courtesy of TH- Rodven

Esperanza by Salasa Celtica
Courtesy of Disco Leon

Shadow in the Rose Garden by
The M Machine
Courtesy of Owsla

6 Underground by Sneaker Pimps
Possibly Maybe by Bjork
Courtesy of One Little Indian

Antichrist by Owl Vision
Courtesy of Comorbid Records

Pagan Poetry by Bjork
Courtesy of Polydor

Manner of Death Arkus P Remix by
Robert Natus
Courtesy of T:Classixx

Black Death by Owl Vision
Courtesy of Dga Fäu Records

Beneath the Sand by System Syn
Courtesy of Metropolis

All About The Music by Bioweapon
Courtesy of the Artist

RaveHeart by Galantis
Courtesy of Robotberget

Reflejo by Mucof
Retratos by Mucof
Recuerdos by Mucof
Courtesy of Leaf

Beauty Surrounds by Houses
Courtesy of Downtown Records

*For the enjoyment of all patrons please turn your cell phone to OFF.
The videotaping or other video or audio recording of this production is strictly prohibited.*

Polaroid Stories runs about 2 hours with 10 minute intermission.

*Special Thanks
Jana Whidbey and Michael Smith*

*BFA Candidate

Director's Notes

The rush I felt at my first reading of Naomi Iizuka's play was mixed: shock and excitement with a very healthy dose of trepidation. How dare she blend poetry, Greek mythological characters, street peddlers and urchins, nonlinear plot lines, and urban apathy all in one play? How dare she? Needless to say, I was hooked before I even realized it. Perhaps the rest is best quoted from her source material, Ovid's *Metamorphosis*:

*My intention is to tell of bodies changed
To different forms; the gods, who made the changes,
Will help me--or so I hope...*
Met. 1.1-3

-Patrick Dizney

u•topia Coffee House
706 E University Way
Ellensburg
(509) 933-1400
Facebook Instagram
Frozen Yogurt & M-F 7am-10pm
S-S 8am-10pm
10% off your purchase with this coupon
NOT VALID WITH OTHER OFFERS
Coffee Smoothies Bagels
Free Wi-Fi Fro-Yo Cozy Space



DAKOTA CaFe



(509) 925-4662

www.perkinsrestaurants.com

1504 Hwy 97
Ellensburg, WA
98926

FALL QUARTER PRODUCTION CREWS

Costumes/Wigs Lab

Costume Shop ManagerM. Catherine McMillen
Shop Supervisor Jessica Pribble
Draper Serina Eschels*
Stitchers..... Lucia Antonio*, Alicia Burch*
Caitlin Cardinale*, Kelsey Sheppard*, Ashley Baker*
Lab Students: Jackie Young*, Sara Baer, Kory Caldwell, Nikki Delmarter*
Kylur Ducotey*, Eleasha Ellis, Corkey Herron, Jennifer Ives*, Cole Ziegler*
Katie Jones, Krissi Marks, Samantha Miller*, Sam Murie, Keith Opsal, Kylene Peden*
Cayla Raymaker*, Austin Raver*, Patric Reutter*, Kylie Rose*, Joshua Tavenner
Jacob Tillet, Henry Van Leishout*, Whitney Ward*, Jordan Michael Whidbey*

Lighting Lab

Lab Supervisor Jason Tucholke
Electricians Amanda Lehr*, Jennifer Groce*
Ashley Thayer*, Avril Martinez*, Wayne Ogle*
Lab Students Zach Draper*, Kylur Ducotey*, Adam Fisher*
Jacob Sapp*, Jordyn Brown*, Chad Oswald*, Crystal Rivera

Scenery Lab

Lab Supervisor David Barnett
Master Carpenter Jennifer Ives*, J.J Hernandez*
Shop Assistants/ Carpenters Tiffani Johnson*, Jorie Jones*,
Cayla Raymaker*, Ashley Thayer*
Lab Students: Chantel Brannan, Allison Monroe, Travis Franks*
David Morris*, Elyssa Nelson*, Wayne Ogle*, Jorie Jones*

Painting Lab

Lab Supervisor Marc Haniuk
Lab Students Jordyn Brown*, Rachel Culberston,
Corkey Herron, Tara Nix*, Taylor Woyvodich*

Marketing and House Management Lab

Lab Supervisor Scott Robinson
Marketing Office Assistant Sarah Andrews*

*BFA Candidate

Production Staff

Production Manager	Jerald Dougherty
Technical Director.....	David Barnett
Managing Director	Scott R. Robinson
Technical Supervisor.....	David Barnett
Lighting Shop Supervisor.....	Jason Tucholke
Costume Shop Supervisor	M.Catherine McMillen

Crew

Master Electrician	Amanda Lehr*
Deck Electrician	Allison Monroe
Light Board Operator	Katey Jones
Sound Board Operator.....	Zach Draper*
Scenic Crew Chief.....	Jennifer Ives*
Scenic Crew.....	Britany Decker, Corina Curiel, Sarah Miles
Wig and Make-up Artisan	Jackie Young*
Wardrobe Crew Chief	Kelsey Sheppard*
Wardrobe Crew	Angelica Bartorelli, Jala Harper, Jackie Young* Miranda Bellah, Azzy Marks, Emily Boudreau
Props Crew	Joanne Kirckof*
House Manager	Jenalee Mariotti*, David Morris*

*BFA Candidate

FACULTY AND STAFF

DR. JAY BALL

Assistant Professor of Theatre Studies

DAVID BARNETT

Technical Director, McConnell Stage Manager

CHRISTINA BARRIGAN

Associate Professor, Resident Lighting Designer and Head of Design

GEORGE W. BELLAH, III

Associate Professor, Performance, Movement, and Asian Drama

DAVID M. BROWN

Assistant Professor and Musical Director

DR. TERRI L. BROWN

Associate Professor, Head of Musical Theatre

GWEN BRUCE

Department Fiscal Technician II

ANNELIESE D. CHILDRESS

Lecturer, Choreographer

JERALD DOUGHERTY

Sr. Lecturer, Production Manager, Stage Management

MARC HANIUK

Associate Professor, Resident Scenic Designer

BRENDA HUBBARD

Professor, Performance/Literature

MARY MAKINS

Department Senior Secretary

TESS MCINTYRE

Lecturer

M. CATHERINE McMILLEN

Costume Shop Manager

JESSICA PRIBBLE

Lecturer, Design and Technology

SCOTT R. ROBINSON

Professor, Department Chair, Resident Costume Designer

JASON TUCHOLKE

Lecturer, Sound and Design Technology

MICHAEL J. SMITH

Professor, Performance, Voice and Dialects

PATRICK DIZNEY

Assistant Professor, Performance

EMERITUS FACULTY

DR. WESLEY VAN TASSEL

GRADUATE TEACHING ASSISTANTS

CHELSEA ROBERTS

CASSANDRA WHITE

JUSTIN ALMQUIST

CAL DOROUGH

For more information on our upcoming productions, please visit: www.cwu.edu/theatre

Central Washington University

Learn. Do. Live.

Hearthstone Cottage

**Independent Retirement,
Assisted Living & Memory Care**

**All Private Apartments
3 Meals Offered Daily
Transportation
Well Trained & Caring Staff
Housekeeping & Laundry
Active Social Calendar
Small Pets Welcome**



***It's not just where you live...
It's how you live!***

509 925-3099

HearthstoneCottageEllensburg.com

802 E Mountain View Ave, Ellensburg, WA 98926