

Do Androids Dream of Electric Fences? Safety-Aware Reinforcement Learning with Latent Shielding

Peter He,^{1,2,3} Borja G. León,¹ Francesco Belardinelli¹

¹ Department of Computing, Imperial College London

² Wellcome / EPSRC Centre for Interventional and Surgical Sciences, University College London

³ Apricity, London

peter.he.21@ucl.ac.uk, b.gonzalez-leon19@ic.ac.uk, francesco.belardinelli@ic.ac.uk

Abstract

The growing trend of fledgling reinforcement learning systems making their way into real-world applications has been accompanied by growing concerns for their safety and robustness. In recent years, a variety of approaches have been put forward to address the challenges of safety-aware reinforcement learning; however, these methods often either require a handcrafted model of the environment to be provided beforehand, or that the environment is relatively simple and low-dimensional. We present a novel approach to safety-aware deep reinforcement learning in high-dimensional environments called *latent shielding*. Latent shielding leverages internal representations of the environment learnt by model-based agents to “imagine” future trajectories and avoid those deemed unsafe. We experimentally demonstrate that this approach leads to improved adherence to formally-defined safety specifications.

Introduction

The steady trickle of reinforcement learning (RL) systems making their way out of the lab and into the real world has cast a spotlight on the safety and robustness of RL agents. The motivation behind this should be relatively easy to grasp: when training an agent in real-world settings, it is desirable that some states are never reached as they could, for instance, cause permanent damage to the hardware the agent is controlling. We can thus informally define the notion of *safety-aware RL* in terms of the classical RL setup with the added requirement that the number of *unsafe* states visited be minimised. Under this definition, however, it has been found that many state-of-the-art RL algorithms unnecessarily enter unsafe states despite safe alternatives being available and there being a positive correlation between avoiding such states and reward (Giacobbe et al. 2021).

The field of safety-aware RL encompasses a multitude of approaches ranging from constrained policy optimisation (Chow et al. 2017; Achiam et al. 2017; Yang et al. 2020) to safety critics (Srinivasan et al. 2020; Bharadhwaj et al. 2021; Thananjeyan et al. 2021) to meta-learning (Turchetta et al. 2020). In this work, we focus on a particular family of

approaches known as *shielding* (Alshiekh et al. 2018; Anderson et al. 2020; Giacobbe et al. 2021; ElSayed-Aly et al. 2021; Pranger et al. 2021). Central to shielding is the notion of a *shield*, a filter that checks actions proposed by the agent’s existing policy with reference to a model of the environment’s dynamics and some formal safety specification. The shield overrides actions that may lead to an unsafe state using some other safe (but by no means optimal) policy. A key advantage of many shielding approaches is that the resulting *shielded* policies are formally verifiable; however, a shortcoming is that they require a model of environmental dynamics - typically handcrafted - to be provided in advance. Providing such a model may prove difficult for complex real-world environments, with inaccuracies and human biases creeping into handcrafted models.

In this work, we propose a safe RL agent that makes use of *latent shielding*, an approach to shielding in environments where a formally-specified dynamics model is not available in advance. At an intuitive level, the agent uses a data-driven approach to learn its own latent world model (a component of which is a dynamics model) which is then leveraged by a shield. The shield then uses the agent’s model to “imagine” trajectories arising from different actions, forcing the agent to avoid those it foresees leading to unsafe states. In addition, the agent can be trained within its own latent world model thus reducing the number of safety violations seen during training.

Contributions The main contribution of this work is a framework for shielding agents in complex, stochastic and high-dimensional environments without knowledge of environmental dynamics *a priori*. We further introduce a new method to aid exploration when training shielded agents. Though our framework loses the formal safety guarantees associated with traditional symbolic shielding approaches, our experiments illustrate that latent shielding reduces unsafe behaviour during training and achieves testing performance comparable to previous symbolic approaches.

Preliminaries

In this section, we cover some relevant background topics. We begin by introducing our problem setup for safety-aware RL and give an overview of the specification language used in this work. This is followed by an outline of the latent

world model we make use of in this work as well as a discussion on shielding.

Problem Setup

We consider an agent interacting with an environment \mathcal{E} modelled as a *partially observable Markov decision process (POMDP)* with states $s \in \mathcal{S}_{\mathcal{E}}$, observations $o_t \in \mathcal{O}_{\mathcal{E}}$, agent-generated actions $a_t \in \mathcal{A}_{\mathcal{E}}$ and scalar rewards $r_t \in \mathbb{R}$ over discrete time steps $t \in [0, 1, \dots, T - 1]$. We assume the environment has been augmented with a labelling function $L_{\mathcal{E}}^{\phi} : \mathcal{S}_{\mathcal{E}} \rightarrow \{\text{safe}, \text{unsafe}\}$ that, at each time step, informs us whether a *violation* has occurred with respect to some formal safety specification ϕ . For the avoidance of doubt, we define a violation to have occurred whenever ϕ does not hold. This is a weaker assumption than previous works in shielding (which assume access to an abstraction of the environment) and can be thought as a secondary safety-focused reward function with a binary output. Intuitively, the goal of the agent is to learn a policy π that maximises its expected cumulative reward while minimising the number of violations of ϕ .

Syntactically Co-Safe Linear Temporal Logic

In this work, we use *syntactically co-safe Linear Temporal Logic (scLTL)* (Kupferman and Vardi 2001) as our specification language. Valid scLTL formulae over some set of atomic propositions AP can be constructed according to the following grammar:

$$\phi ::= \text{true} \mid d \mid \neg d \mid \phi \vee \psi \mid \phi \wedge \psi \mid \bigcirc \phi \mid \phi \cup \psi \mid \diamond \phi \quad (1)$$

where $d \in AP$, \neg (*negation*), \vee (*disjunction*), \wedge (*conjunction*) are the familiar operators from propositional logic, and \bigcirc (*next*), \cup (*until*) and \diamond (*eventually*) are temporal operators.

The main rationale behind our choice of specification language is the fact that we can efficiently monitor a system’s adherence to an scLTL specification using a technique known as *progression* (Bacchus and Kabanza 2000). This is highly advantageous as it means that, given an scLTL specification, $L_{\mathcal{E}}^{\phi}$ can be straightforwardly synthesised.

Recurrent State-Space Models

We refer to the predictive model of an environment maintained by a model-based agent as its *world model*. World models can be learnt from experience and be used both as a substitute for the environment during training (Ha and Schmidhuber 2018; Hafner et al. 2021) and for planning at run-time (Hafner et al. 2019b). Though many realisations of the notion of a world model exist, the world model used in this work is based on the *recurrent state-space model (RSSM)* proposed by (Hafner et al. 2019b).

An RSSM is composed of three key components: a latent dynamics model, a reward model, and an observation model. These components act on compact states formed from the concatenation of a deterministic latent state h_t and stochastic latent state z_t .

Latent Dynamics Model The latent dynamics model is made up of a number of smaller models. First, the *recurrent model* $h_t = f(h_{t-1}, z_{t-1}, a_{t-1})$ is used to compute the deterministic latent state based on the previous compact state and action. From h_t and the current observation o_t , a distribution $q(z_t|h_t, o_t)$ over posterior stochastic latent states z_t is computed by the *representation model*. At the same time, a distribution $p(\hat{z}_t|h_t)$ over prior stochastic latent states \hat{z}_t is computed by the *transition model*, based only on h_t . During training, the transition model attempts to minimise the *Kullback Leibler (KL)* divergence between the prior and posterior stochastic latent state distributions. In doing this, the RSSM learns to predict future latent states (using the recurrent and transition models) without access to future observations.

Observation Model The *observation model* computes the distribution $p(\hat{o}_t|h_t, z_t)$ over observations \hat{o}_t for a particular state. Though not strictly needed, the observation model can prove useful for visualising predicted future states and providing a richer training signal.

Reward Model The *reward model* computes the distribution $p(\hat{r}_t|h_t, z_t)$ over rewards \hat{r}_t for a particular state.

In practice, the distributions p and q are implemented with neural networks p_{θ} and q_{θ} respectively, parameterised by some set of parameters θ . These latent dynamics models define a fully-observable *Markov decision process (MDP)* as the latent states in the agent’s own internal model can always be observed by the agent (Hafner et al. 2019a). We denote the state space of this MDP (comprised of compact latent states) as $\mathcal{S}_{\mathcal{I}}$.

Shielding

The *classical* formulation of shielding in RL is given by (Alshiekh et al. 2018). It assumes access to two ingredients: an LTL safety specification and *abstraction* (a MDP model of the environment that captures the aspects of the environment relevant for planning ahead with respect to the safety specification). These ingredients are used to construct a formally verifiable reactive system that monitors the agent’s actions, overriding those which lead to violation states.

Proposed by (Giacobbe et al. 2021), *bounded prescience shielding (BPS)* avoids the need for hand-crafted abstractions by exploiting the fact that some agents are trained in computer simulations. The shield operates by leveraging access to the program underlying the simulation to look ahead into future states within some finite horizon. Using BPS over classical shielding does, however, come with a few disadvantages. Firstly, it requires access to the simulation at run-time which may prove difficult to provide (especially in cases where running the simulation is computationally expensive). Moreover, an agent using BPS, even when starting from a safe state, can find itself entering unsafe states in cases where the number of steps between a violation being caused by an action and the violation state itself exceeds the shield’s look-ahead horizon. This is not the case for classical shielding which resembles BPS with an infinite horizon.

Bounded Safety

The notion of safety used by BPS is defined over MDPs. For an arbitrary MDP with states \mathcal{S} and actions \mathcal{A} , a *bounded trajectory* ρ of length H is a sequence of states and actions $s_0 \xrightarrow{a_0} s_1 \xrightarrow{a_1} \dots \xrightarrow{a_{n-1}} s_n$ comprised of no more than H states and with the final state s_n either being a terminal state or $n = H - 1$. We further denote the set of all finite trajectories starting from some arbitrary state $s \in \mathcal{S}$ by $\varrho(s)$ and the set of all bounded trajectories of length H that start from s by $\varrho_H(s)$.

We say a bounded trajectory ρ of length H satisfies *H-bounded safety* with respect to safety specification ϕ , written $S_H(\rho, \phi)$, if and only if for all $s_i \in \rho$, $L_{\mathcal{E}}^{\phi}(s_i) = \text{safe}$. Moreover, we can extend the notion of *H-bounded safety* over the set of policies: a policy π is *H-bounded safe* with respect to ϕ , denoted as $S_H(\pi, \phi)$, if and only if for all $s \in \mathcal{S}$,

- either there exists some $\rho \in \varrho_H(s)$ such that $S_H(\rho, \phi)$ and $\pi(s_0) = a_0$;
- or for all $\rho \in \varrho_H(s)$, $\neg S_H(\rho, \phi)$.

In other words, the policy will choose a safe trajectory as long as one exists. Finally, we formally define a violation of ϕ to be *inevitable* in state $s_0 \in \mathcal{S}$ if and only if for all $\rho \in \varrho(s_0)$, $\neg S_H(\rho, \phi)$.

Shielded Dreams

We introduce the notion of *latent shielding*, a novel class of shielding approaches that replace abstractions used by shields with learned latent dynamics models thus allowing the enforcement of formal safety specifications while avoiding the need for an explicitly-defined abstraction of the environment. We further introduce the first such approach, *approximate bounded prescience shielding*, a framework for latent shielding that leverages latent world models learnt by model-based *deep RL (DRL)* agents. In this work, our model-based agent of choice is Dreamer¹ (Hafner et al. 2021), which we modify to incorporate shielding into its data collection, training and deployment phases.

Safety RSSM

We augment the standard RSSM with a labelling function $L_{\mathcal{I}}^{\phi} : \mathcal{S}_{\mathcal{I}} \rightarrow \{\text{safe}, \text{unsafe}\}$ which maps latent states $s_t \in \mathcal{S}_{\mathcal{I}}$ to whether they correspond to states in violation of ϕ . As with the other models, $L_{\mathcal{I}}^{\phi}$ is implemented with a neural network with a categorical output l_{θ} also parameterised by θ . This yields an enhanced RSSM (illustrated in Figure 1) which we will refer to as a *safety RSSM (SRSSM)*.

We train l_{θ} along with the other components of the SRSSM with the objective

$$\min_{\theta} \mathcal{L}_{\text{model}} = \mathcal{L}_{\text{observation}} + \mathcal{L}_{\text{reward}} + \mathcal{L}_{\text{KL}} + \mathcal{L}_{\text{violation}} \quad (2)$$

where the first three terms are as described in (Hafner et al. 2019a, 2021). $\mathcal{L}_{\text{violation}}$ is a new term that we introduce that

¹In practice, any model-based agent with a latent dynamics model can be used.

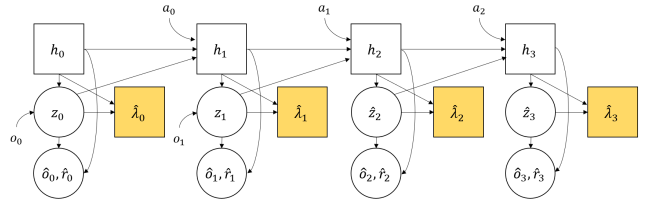


Figure 1: Safety RSSM. In this example, the model observes the environment for two time steps and predicts the subsequent two time steps. a_t denotes the action taken at step t , o_t the observation, h_t the deterministic component of the latent state, z_t the posterior stochastic component, \hat{z}_t the prior stochastic component, \hat{l}_t the violation prediction (our novel contribution, highlighted in yellow), \hat{o}_t the predicted observation and \hat{r}_t the predicted reward. Circles represent stochastic variables whereas squares represent deterministic variables. An arrow from one shape to another indicates that the source is used in the calculation of the destination.

acts as a weighted binary cross-entropy loss over predictions by l_{θ} .

Approximate Bounded Prescience Shielding

We now integrate the SRSSM as part of a latent shielding approach which we shall refer to as *approximate bounded prescience shielding (ABPS)*. Though ABPS is inspired by BPS, it differs in two key aspects: (1) we approximate the labelling function $L_{\mathcal{E}}^{\phi}$ and environmental dynamics using an SRSSM; and (2) we sample a fixed number of potential future trajectories as opposed to exhaustively exploring all possibilities.

Thus, our approach can be thought of as an approximation of some “ideal” bounded prescience shield that uses the true environmental dynamics and labelling function. The advantage of the first difference should be obvious: it enables the shield to learn its own abstraction, removing the need for hand-crafting or access to a digital environment’s underlying program. Why the second difference is advantageous may be slightly less obvious - it’s a heuristic that allows us to increase the horizon H . By directing the sampling of trajectories in accordance with states and actions the policy is biased towards (as opposed to uniformly), it may be possible to achieve comparable performance to a standard BPS in foreseeing unsafe states. The intuition behind this is that by not sampling trajectories the agent is unlikely to take, more of our computational budget can be dedicated into ensuring that the agent’s most likely trajectories are safe. In other words, we will not spend time planning to correct actions that the agent is unlikely to take.

More formally, our shielded policy π^* can be written:

$$\pi^*(s_t) = \begin{cases} \pi(s_t), & \text{if } P(l_{\theta}(s_{t+1}) = 1 | \pi(s_t)) < \epsilon \\ \pi_{\text{alt}}(s_t), & \text{otherwise} \end{cases} \quad (3)$$

where $\pi(s_t)$ is the agent’s policy without shielding; $s_t \in \mathcal{S}_{\mathcal{I}}$ is some compact latent state; and π_{alt} is an alternative policy that ensures that, if a violation isn’t already inevitable, the

agent avoids a predicted unsafe state. Though more complex candidates for π_{alt} (such as selecting the unshielded policy’s highest-ranked safe action (Alshiekh et al. 2018)) do exist, the implementation of π_{alt} in this work simply considers all the other actions until a safe trajectory is found. In the event that no safe action is found, the agent takes a random action.

Since the SRSSM models stochasticity, we can sample multiple futures arising from an action being taken and derive probabilistic estimates of whether an action will lead to a violation. In this way, we can estimate the safety of an action taken in a given state by checking whether the probability of a violation occurring (inferred by sampling) exceeds a fixed threshold ϵ (see Algorithm 1). Moreover, the sampling process can, in practice, be augmented to sample a wider range of trajectories (less likely to be taken by the agent) by adding a small amount of noise $\eta \sim \mathcal{N}(0, \sigma^2)$ to actions suggested by the policy during sampling.

Algorithm 1: Approximate Bounded Prescience Shielding in latent space.

Input: Current compact latent state (h, z) , unshielded action a , horizon H , number of trajectories to sample N , random noise η , alternative policy π_{alt} and threshold ϵ .

Output: A tuple containing an action and whether or not the shield had to interfere.

```

1 Initialise array of zeros  $\Lambda$  with length  $N$ .
2 for  $n = 1..N$  do
  /* Sample a trajectory and check
   if it is unsafe. */
3  Imagine trajectory
    $\rho = (h, z) \xrightarrow{a} (\hat{h}_1, \hat{z}_1) \xrightarrow{a_1} \dots \xrightarrow{a_{H-1}} (\hat{h}_H, \hat{z}_H)$ 
   where  $a_i = \pi(\hat{h}_i, \hat{z}_i) + \eta$ .
4  if  $\exists i \in [1, 2, \dots, H]$  such that
    $l_\theta(h_i, z_i) = unsafe$  then  $\Lambda[n] := 1$ .
5 end
  /* Interfere if probability of
   violation exceeds  $\epsilon$ . */
6  $interfered := false$ .
7 if  $\frac{1}{N} \sum_{\lambda \in \Lambda} \lambda > \epsilon$  then
8   |  $a, interfered := \pi_{alt}(h_i, z_i), true$ .
9 end
10 return  $\langle a, interfered \rangle$ .
```

Training Regime

We extend the training regime proposed in (Hafner et al. 2019a) to include the training and application of ABPS. Though the full training procedure is detailed in Algorithm 2, we provide an overview below.

Overview The training procedure can be split into three phases: data collection, latent world model training and agent training (lines 10-22, 4-6 and 7-8 in Algorithm 2 respectively). These phases are cycled through until convergence.

Data Collection In this phase, the agent interacts with the real environment to collect a dataset $\mathcal{D} \subseteq \mathcal{S} \times \mathcal{A} \times \mathcal{O} \times \mathbb{R} \times \{0, 1\}$ of states, actions, observations, rewards and violations with which a latent world model can be learned. At the very start of training, we collect trajectories from S seed episodes using a random policy; at all other times, we use the agent’s shielded policy.

Latent World Model Training The goal of this phase is to improve the model of the world so that the policy has an accurate imagined environment to train in. To this end, we train the latent world model with respect to the objective in Equation 2 on B data sequences of length L sampled from \mathcal{D} .

Agent Training Agent training is composed of two steps. First, starting from states from the same B data sequences from the latent world model training phase, the agent imagines I trajectories of length H with actions chosen from its current policy. Next, the unshielded policy π is updated in an actor-critic fashion as in (Hafner et al. 2019a, 2021).

Key Changes and Contributions We describe and discuss the key changes we have made that differentiate our agent from previous approaches.

Experience Dataset. Elements in the experience dataset \mathcal{D} now contain a binary variable representing whether a violation has occurred λ_t .

Latent Shielding. Before being sent to the environment \mathcal{E} , actions a_t generated by the unshielded policy π are routed through our newly-proposed latent shield (described in Algorithm 1). The shield returns a new approximately H -bounded safe action a'_t .

Intrinsic Punishment. Whenever a violation occurs (whether detected by the latent shield or by the environment), we override the environment’s reward function by instead assigning a reward $p < 0$. This discourages the agent’s unshielded policy π from taking actions that lead to unsafe states through the standard RL setup. Over time, this means that the shield will have to interfere less as π becomes biased away from unsafe states. This is a standard practice in the shielding literature (Alshiekh et al. 2018), however new to the Dreamer family of agents (Hafner et al. 2019a,b, 2021).

Shield Introduction Schedule We introduce the novel notion of a *shield introduction schedule* Π which can enable and disable shielding during training. The rationale behind this is that a shield backed by an inaccurate world model will incorrectly label some safe states as unsafe, and vice versa. In some cases, this may prove detrimental to the training process: suppose l_θ happens to be initialised in such a way that all states are labelled as unsafe. As a result, the shield can prevent the agent from exploring the environment and improving its internal model of the environment. This, in turn, can prevent the labelling function from learning to correctly differentiate safe states from unsafe states.

To give the agent time to learn a good world model before restricting exploration through a learned shield, we augment the training procedure with Π which aims to gradually introduce shielding. To our knowledge, this is the first time such a system has been proposed. Though there exist a wide

range of possible implementations of Π , in this work we use a simple schedule that seems to work well empirically: start training with shielding disabled and enable shielding once the world model loss (in particular, the violation loss) begins to plateau. A detailed comparison of different shield introduction schedules, however, is beyond the scope of this study and left for further work.

Algorithm 2: Training Dreamer with Approximate Bounded Prescience Shielding.

Input: Punishment for violation r_{punish} , shield imagination horizon H , number of steps to imagine ahead for training I , number of seed episodes S , number of training steps per episode C , number of real environment interaction steps per episode T , sequence length L , batch size B , environment \mathcal{E} , labelling function $L_{\mathcal{E}}^{\phi}$ and shield introduction schedule Π .

- 1 Initialise dataset \mathcal{D} with S seed episodes and neural network parameters θ randomly.
- 2 **while not converged do**
 - /* Learning the internal world model and agent policy. */
 - 3 **for** $c = 1..C$ **do**
 - 4 Draw B data sequences $\{(a_t, o_t, r_t, \lambda_t)_{t=k}^{k+L}\} \sim \mathcal{D}$.
 - 5 Compute model states h_t, z_t and \hat{z}_t .
 - 6 Update θ using representation learning.
 - 7 Imagine a trajectory ρ of length I for each state in each data sequence.
 - 8 Update the unshielded policy π based on the imagined trajectories.
 - 9 **end**
 - /* Collecting data from the environment. */
 - 10 **for** $t = 1..T$ **do**
 - 11 Compute model states h_t, z_t from history.
 - 12 Select action a_t with the unshielded policy, adding exploration noise if desired.
 - 13 **if** Π has enabled shielding **then**
 - 14 Pass h_t, z_t and a_t into Algorithm 1 to obtain the tuple $\langle a'_t, interfered \rangle$.
 - 15 **else**
 - 16 $a'_t, interfered := a_t, false$.
 - 17 **end**
 - 18 $r_t, o_t := \mathcal{E}.step(a'_t)$.
 - 19 Check if $L_{\mathcal{E}}^{\phi}$ has detected a violation and store the result as 0 or 1 in λ_t .
 - 20 **if** $\lambda_t = 1$ or $interfered$ **then** $r_t := r_{punish}$.
 - 21 **end**
 - 22 Add experience to dataset $\mathcal{D} := \mathcal{D} \cup \{(o_t, a_t, r_t, \lambda_t)_{t=1}^T\}$.
 - 23 **end**

Experiments

In this section, we compare our ABPS agent against Dreamer without shielding (Hafner et al. 2019a, 2021), Dreamer with BPS (Giacobbe et al. 2021), and CPO (Achiam et al. 2017). We also empirically investigate some aspects of the internal workings of our agent. A summary of the environments used can be found below.

Visual Grid World The *Visual Grid World (VGW)* environment is a simple deterministic navigation benchmark with high-dimensional ($64 \times 64 \times 3$) visual observations (see Figure 2) and discrete actions (up, down, left, right and staying still). The agent’s (in green) task is to navigate to randomly-placed targets (in black) while avoiding any unsafe locations (in red). This yields a relatively straightforward safety specification:

$$\neg \text{agent_in_red_square} \cup \text{episode_ended}$$

where `agent_in_red_square` is true if and only if the agent is in an unsafe location, and `episode_ended` is only true at the end of an episode.

The reward function used is also quite simple, with a small penalty term at each time step to encourage movement (though indeed different forms of intrinsic motivation may be also used):

$$\mathcal{R}(s_t, a_t) = \begin{cases} 100, & \text{agent reaches target,} \\ -40, & \text{agent enters unsafe state,} \\ -10, & \text{agent does not move,} \\ -1, & \text{otherwise.} \end{cases}$$

We experiment with both *fixed* and *procedurally generated* grids over episodes consisting of 500 steps.

Cliff Driver The *Cliff Driver (CD)* environment is a symbolic benchmark with stochastic dynamics and continuous actions. The agent controls the forward acceleration of a car and is tasked with driving to the edge of a cliff as quickly as possible without overshooting and falling into the sea. The car exists on a one-dimensional road with actions $a_t \in [-1, 1]$ which correspond to the acceleration of the car. The car cannot move backwards and its speed v_t is lower-bounded at 0 (thus $a_t < 0$ corresponds to braking as opposed to reversing). The agent starts each episode stationary at a fixed distance x_0 from the edge of the cliff with its distance at subsequent time steps being written x_t . Stochasticity comes from the fact that at each time step there is a probability p_{stick} that the car’s controls get “stuck” meaning that the current action is ignored and replaced with the previous action.

Observations from the environment are given as two-dimensional vectors encoding the distance from the edge of the cliff in one component and the speed of the car in the other. The safety specification can thus be written:

$$\neg \text{agent_fallen_off_cliff} \cup \text{episode_ended}$$

where `agent_fallen_off_cliff` is true if and only if the agent has overshoot the cliff, and `episode_ended` is only true at the end of an episode.

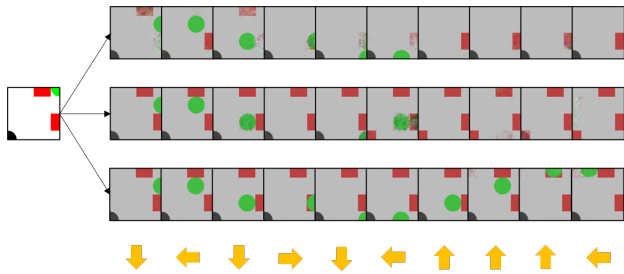


Figure 2: Comparison of latent trajectories in the agents’ learned models of the environment. All trajectories begin from the leftmost observation and time progresses from left to right. The bottom row of arrows denote the actions taken just before each time step. From top to bottom, the three rows of images correspond to trajectories in the latent space of the BPS agent, the unshielded agent, and our agent.

Finally, the reward function is given as:

$$\mathcal{R}(s_t, a_t) = \begin{cases} 1 - \frac{x_t}{x_0}, & \text{agent has not fallen off cliff,} \\ -5, & \text{otherwise.} \end{cases}$$

We experiment with $p_{stick} = 0.1$ and $p_{stick} = 0.5$ on roads 10 units long over episodes consisting of 20 steps.

Performance Evaluation

We evaluate our agents on three metrics: (1) average reward per episode at test-time; (2) average number of violations per episode at test-time; and (3) total number of violations during training. Results are calculated by averaging over five versions of each agent trained from different seeds.

Training Details Experiments were carried out on a machine with a single NVIDIA RTX 2080 Ti GPU, an AMD Ryzen 7 2700X processor and 64GB of RAM. For each environment, the model-based agents were trained for the same number of steps; the model-free CPO agents were allowed to train for longer ($2\times$ longer for the VGW environment and $5\times$ longer for the CD environments). The latent shield horizon H was 2 and 6 for the VGW and CD environments respectively.

We used the network architectures proposed in (Hafner et al. 2019a). The number of nodes in each layer varied depending on the environment and can be found in Table 2. We implemented our encoder for symbolic observations from the CD environment as a feed-forward network with three fully-connected hidden layers and ReLU activations. For the CPO agent, we used the same observation encoders and policy networks as mentioned above. Moreover, since the action space of the CD environment is continuous, we discretised the actions into four bins when performing BPS (this boiled down to rounding the continuous actions proposed by the agent to the nearest action in the set $\{-1, -0.1, 0.1, 1\}$). Such modifications, however, were not needed for our agent.

Shield introduction schedules were kept relatively simple. For the VGW environment, the agent started with shielding disabled. After 10 episodes (including 5 seed

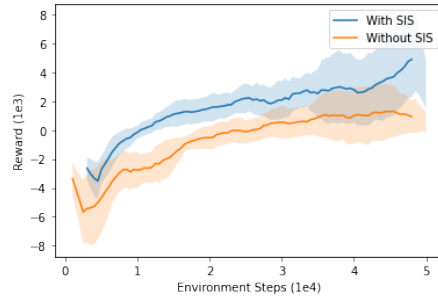


Figure 4: Training reward curves of agents using latent shielding with and without a shield introduction schedule (SIS).

episodes), shielding was enabled every third episode. After 20 episodes, shielding was enabled every other episode. Shielding was fully enabled after 30 episodes. In addition, the unsafe threshold ϵ was decayed linearly from 0.5 to 0.125 over the course of training. For the CD environment, shielding was enabled after 60 episodes (including 50 seed episodes).

Results As can be seen in Table 1, our agent collected more reward at test-time than both the unshielded and BPS agents in the VGW environment. Moreover, our agent saw a seven-fold reduction in test-time violations compared to the unshielded agent across both the fixed and procedurally generated environments, averaging at less than one violation per episode for the fixed VGW. This reduction in training violations is even more dramatic when compared to the model-free CPO agent. Our agent outperformed the other agents at test-time in the most stochastic CD environment ($p_{stick} = 0.5$). This is possibly due to the SRSSM used by our latent shield being better able to capture non-determinism than BPS. Nevertheless, the result is still rather impressive given that the agent using BPS sampled 1024 trajectories at every time step whereas our agent only sampled 20. Plots of training reward and violations can be seen in Figure 3.

Qualitative Evaluation of Learned Dynamics

We evaluate the quality of each agent’s latent dynamics model by observing its trajectory predictions given a particular starting state and action sequence. Each agent was given the same starting observation and predefined sequence of 10 actions. The agents took these actions in their respective latent world models with the states traversed being decoded for inspection. Results can be seen in Figure 2 and indicate that, qualitatively, our agent’s decoder performed the best, accurately predicting 10 frames into the future. One possible reason for this observation is that the inclusion of the violation detection objective in the SRSSM encourages the model to focus on accurately capturing violation states. Another potential factor is that the BPS agent never actually enters unsafe states and thus finds it difficult to represent them.

	Flavour	Metric	Latent	Unshielded	BPS	CPO
Visual	Fixed	Testing Reward	15067 (434)	13148 (249)	12468 (620)	-2925 (1065)
		Testing Violations	0.30 (0.76)	2.25 (1.60)	0 (0)	13.43 (19.25)
		Training Violations	1262 (172)	2306 (833)	0 (0)	16455 (1435)
Grid World	Procedural	Testing Reward	8084 (2221)	6825 (1427)	1938 (3552)	-1588 (2051)
		Testing Violations	4.50 (3.59)	33.7 (16.28)	0 (0)	19.60 (13.83)
		Training Violations	14018 (1852)	15309 (4686)	0 (0)	18705 (3756)
Cliff	$p_{stick} = 0.1$	Testing Reward	8.57 (2.96)	10.76 (3.29)	10.50 (3.28)	7.56 (2.86)
		Testing Violations	0 (0)	0 (0)	0 (0)	3.40 (1.91)
		Training Violations	58.2 (9.60)	90.0 (9.10)	24.0 (13.02)	973.0 (357.7)
Driver	$p_{stick} = 0.5$	Testing Reward	8.10 (4.99)	6.63 (8.07)	7.10 (9.52)	6.44 (3.00)
		Testing Violations	0.18 (0.84)	0.54 (1.53)	0.22 (1.18)	0.48 (1.24)
		Training Violations	91.8 (16.85)	157.6 (18.4)	80.4 (17.43)	3126 (2823)

Table 1: Comparison of trained agents with standard deviations in parentheses where applicable.

Do Shield Introduction Schedules Actually Help?

We compare the first 100 training episodes of our agent in the fixed VGW environment with and without a shield introduction schedule. As with the performance evaluation, results are calculated over five trained agents and a plot of training reward can be seen in Figure 4. Though both agents start at roughly the same reward, the agents with a shield introduction schedule consistently outperforms their counterparts without shield introduction schedules.

Related Work and Discussion

Latent World Models Learning latent world models from visual observations has seen growing interest from the RL community (Wahlström, Schön, and Deisenroth 2015; Watter et al. 2015; Racanière et al. 2017; Ha and Schmidhuber 2018; Hafner et al. 2019a,b; Schrittwieser et al. 2020; Hafner et al. 2021). One key trend in the literature is that of training agents in their own learned world models (Ha and Schmidhuber 2018; Hafner et al. 2019a, 2021). In this work, we extend the world model formulation used in (Hafner et al. 2019a,b, 2021) to encode a notion of safety into state representations.

Safety By Filtering Actions Overriding unsafe actions with safe ones has been a popular approach to safety-aware RL. Introduced into the RL scene by (Alshiekh et al. 2018), shielding has received much research interest and has seen applications in real-world settings (Nikou et al. 2021). Various works have attempted to address some of its shortcomings of the original formulation. These include allowing the shield to be updated to aid exploration or correct model imperfections (Anderson et al. 2020; Pranger et al. 2021); improving performance in non-deterministic environments (Jansen et al. 2020; Li and Bastani 2020); and extending shielding to multi-agent RL (ElSayed-Aly et al. 2021). To our knowledge, few works (Srinivasan et al. 2020; Thananjeyan et al. 2021; Bharadhwaj et al. 2021; Giacobbe et al. 2021) focus on removing the need for handcrafting an abstraction (among the most time-consuming and error-prone aspects of shielding), and only one of them (Giacobbe et al. 2021) achieves this without getting rid of the abstraction al-

together, albeit by providing the agent with access to the program that controls the environment.

In contrast, latent shielding tackles the problem head-on by directly learning an abstraction for use by the shield. In this work, the abstraction we use is an SRSSM, which captures stochasticity by design, a useful property for non-deterministic environments. Though our latent shield satisfies an approximation of H -bounded safety with respect to the learned abstraction, its safety with respect to the true environmental dynamics is not guaranteed and instead relies on the fidelity with which the true dynamics are captured. Furthermore, unlike for its formally-verified predecessors, it is a necessary sacrifice that the agent visits unsafe states during training in order to learn a notion of safety (unless, of course, pre-training is possible). Nevertheless, a learned abstraction may be advantageous in settings where handcrafting an abstraction is not feasible and privileged access to some simulation (as in (Giacobbe et al. 2021)) cannot be assumed. Moreover, latent shielding may provide a greater degree of explainability over model-free methods which get rid of the abstraction altogether (Srinivasan et al. 2020; Thananjeyan et al. 2021; Bharadhwaj et al. 2021) - if the shield overrides an action, one can reconstruct the imagined unsafe trajectories that led to the interference. Finally, it should be noted that the problem setup used in this work assumes no prior knowledge on how safe behaviour might be achieved in the environment. This may not be the case in many real-world settings and it is conceivable that combining latent shield learning with curriculum learning based on human knowledge (in a system such as that proposed by (Turchetta et al. 2020)) may lead to improved safety during training.

Conclusions

In this paper, we have presented *latent shielding*, a new framework for shielding DRL agents without the need for a handcrafted abstraction of the environment. Using this framework, we have designed a novel shield and demonstrated that this method not only leads to improved adherence to safety specifications on two benchmark environments with respect to an unshielded agent, but also works out-of-the-box on both continuous and discrete environ-

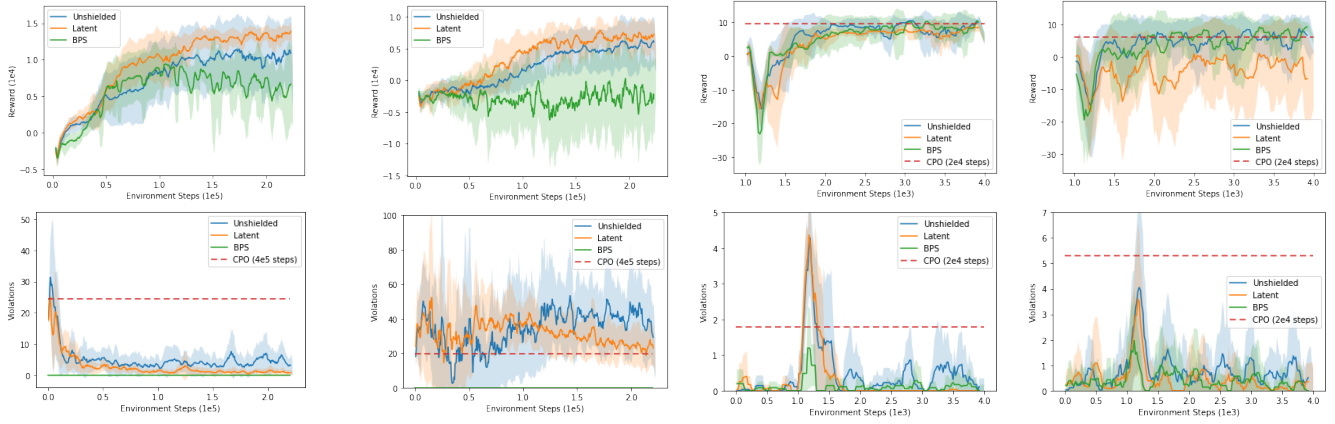


Figure 3: Reward curves (top row) and violations (bottom row) for the model-based agents on the (from left to right) fixed VGW, procedurally generated VGW, cliff driver ($p_{stick} = 0.1$) and cliff driver ($p_{stick} = 0.5$) environments. The shaded area denotes one standard deviation. Dotted lines denoting the performance of the CPO agent after training are given where possible without distorting the scale of the y-axis.

Hyperparameter	Value	
	VGW	CD
Deterministic State Size	200	8
Stochastic State Size	30	16
NN Hidden Layer Size	200	16
Observation Embedding Size	1024	32
Discount Factor (γ)	0.99	0.99
Action Repeat	1	1
Seed Episodes (S)	5	50
Episode Length (T)	500	20
Batch Size (B)	50	250
Sequence Length (L)	50	10
Training Steps (C)	100	100
Exploration Noise Variance (σ^2)	0.3	0.3
Imagination Horizon (I)	15	15
KL Balancing Ratio (β)	4:1	4:1
Violation Class Weighting	3	3
Model Learning Rate	1e-3	1e-4
Policy Learning Rate	8e-5	8e-5
Value Learning Rate	8e-5	8e-7
Bit Depth	5	-
Adam Epsilon	1e-7	1e-7
Adam Beta	0.9, 0.999	0.9, 0.999
ABPS Horizon (H)	2	6
ABPS Sampled Trajectories (N)	20	10
ABPS Unsafe Threshold (ϵ)	0.15	0.15
CPO Cost Limit	5	0

Table 2: Hyperparameters for experiments in each environment.

ments (unlike its predecessor, BPS). Furthermore, we have demonstrated for the first time that shielding at inappropriate times may adversely impact the performance of model-based DRL agents and showed how this phenomenon can be counteracted using our novel notion of *shield introduction schedules*.

Our work opens several exciting avenues for future work. For instance, this work uses a very simple shield introduction schedule; future work may provide a richer investigation into the properties of different schedules. Moreover, though demonstrating promising empirical results, our realisation of latent shielding loses the formally verifiable safety guarantees enjoyed by many symbolic shielding approaches - whether it is possible to construct a verifiable implementation of latent shielding, or compensate for the loss of formal guarantees, are open problems.

Acknowledgements

The authors would like to thank Claudio Elgueta Karstegl for turning our GPU machine off and on again during the national lockdowns.

References

- Achiam, J.; Held, D.; Tamar, A.; and Abbeel, P. 2017. Constrained Policy Optimization. In Precup, D.; and Teh, Y. W., eds., *Proceedings of the 34th International Conference on Machine Learning*, volume 70 of *Proceedings of Machine Learning Research*, 22–31. PMLR.
- Alshiekh, M.; Bloem, R.; Ehlers, R.; Könighofer, B.; Niekum, S.; and Topcu, U. 2018. Safe Reinforcement Learning via Shielding. In *Proceedings of the AAAI Conference on Artificial Intelligence*, volume 32.
- Anderson, G.; Verma, A.; Dillig, I.; and Chaudhuri, S. 2020. Neurosymbolic Reinforcement Learning with Formally Verified Exploration. In *Advances in Neural Information Processing Systems*, volume 33, 6172–6183.

- Bacchus, F.; and Kabanza, F. 2000. Using Temporal Logics to Express Search Control Knowledge for Planning. *Artificial Intelligence*, 116(1): 123–191.
- Bharadhwaj, H.; Kumar, A.; Rhinehart, N.; Levine, S.; Shkurti, F.; and Garg, A. 2021. Conservative Safety Critics for Exploration. In *International Conference on Learning Representations*.
- Chow, Y.; Ghavamzadeh, M.; Janson, L.; and Pavone, M. 2017. Risk-Constrained Reinforcement Learning with Percentile Risk Criteria. *J. Mach. Learn. Res.*, 18(1): 6070–6120.
- ElSayed-Aly, I.; Bharadwaj, S.; Amato, C.; Ehlers, R.; Topcu, U.; and Feng, L. 2021. Safe Multi-Agent Reinforcement Learning via Shielding. In *Proceedings of the 20th International Conference on Autonomous Agents and Multi-Agent Systems*, AAMAS '21, 483–491. Richland, SC: International Foundation for Autonomous Agents and Multiagent Systems. ISBN 9781450383073.
- Giacobbe, M.; Hasanbeig, M.; Kroening, D.; and Wijk, H. 2021. Shielding Atari Games with Bounded Prescience. In *Proceedings of the 20th International Conference on Autonomous Agents and MultiAgent Systems*, 1507–1509. ISBN 9781450383073.
- Ha, D.; and Schmidhuber, J. 2018. Recurrent World Models Facilitate Policy Evolution. In *Proceedings of the 32nd International Conference on Neural Information Processing Systems*, 2455–2467.
- Hafner, D.; Lillicrap, T.; Ba, J.; and Norouzi, M. 2019a. Dream to Control: Learning Behaviors by Latent Imagination. In *International Conference on Learning Representations*.
- Hafner, D.; Lillicrap, T.; Fischer, I.; Villegas, R.; Ha, D.; Lee, H.; and Davidson, J. 2019b. Learning Latent Dynamics for Planning from Pixels. In *Proceedings of the 36th International Conference on Machine Learning*, 2555–2565. PMLR.
- Hafner, D.; Lillicrap, T. P.; Norouzi, M.; and Ba, J. 2021. Mastering Atari with Discrete World Models. In *International Conference on Learning Representations*.
- Jansen, N.; Könighofer, B.; Junges, S.; Serban, A.; and Bloem, R. 2020. Safe Reinforcement Learning Using Probabilistic Shields (Invited Paper). In Konnov, I.; and Kovács, L., eds., *31st International Conference on Concurrency Theory (CONCUR 2020)*, volume 171 of *Leibniz International Proceedings in Informatics (LIPIcs)*, 3:1–3:16. Dagstuhl, Germany: Schloss Dagstuhl–Leibniz-Zentrum für Informatik. ISBN 978-3-95977-160-3.
- Kupferman, O.; and Vardi, M. Y. 2001. *Formal Methods in System Design*, 19(3): 291–314.
- Li, S.; and Bastani, O. 2020. Robust Model Predictive Shielding for Safe Reinforcement Learning with Stochastic Dynamics. In *2020 IEEE International Conference on Robotics and Automation (ICRA)*, 7166–7172.
- Nikou, A.; Mujumdar, A.; Orlić, M.; and Vulgarakis Feljan, A. 2021. Symbolic Reinforcement Learning for Safe RAN Control. In *Proceedings of the 20th International Conference on Autonomous Agents and MultiAgent Systems*, AAMAS '21, 1782–1784. Richland, SC: International Foundation for Autonomous Agents and Multiagent Systems. ISBN 9781450383073.
- Pranger, S.; Könighofer, B.; Tappler, M.; Deixelberger, M.; Jansen, N.; and Bloem, R. 2021. Adaptive Shielding under Uncertainty. In *2021 American Control Conference (ACC)*, 3467–3474.
- Racanière, S.; Weber, T.; Reichert, D. P.; Buesing, L.; Guez, A.; Rezende, D.; Badia, A. P.; Vinyals, O.; Heess, N.; Li, Y.; Pascanu, R.; Battaglia, P.; Hassabis, D.; Silver, D.; and Wierstra, D. 2017. Imagination-Augmented Agents for Deep Reinforcement Learning. In *Proceedings of the 31st International Conference on Neural Information Processing Systems*, NIPS'17, 5694–5705. Red Hook, NY, USA: Curran Associates Inc. ISBN 9781510860964.
- Schrittwieser, J.; Antonoglou, I.; Hubert, T.; Simonyan, K.; Sifre, L.; Schmitt, S.; Guez, A.; Lockhart, E.; Hassabis, D.; Graepel, T.; Lillicrap, T.; and Silver, D. 2020. Mastering Atari, Go, Chess and Shogi by Planning with a Learned Model. *Nature*, 588(7839): 604–609.
- Srinivasan, K.; Eysenbach, B.; Ha, S.; Tan, J.; and Finn, C. 2020. Learning to be Safe: Deep RL with a Safety Critic. *ArXiv*, abs/2010.14603.
- Thananjeyan, B.; Balakrishna, A.; Nair, S.; Luo, M.; Srinivasan, K.; Hwang, M.; Gonzalez, J. E.; Ibarz, J.; Finn, C.; and Goldberg, K. 2021. Recovery RL: Safe Reinforcement Learning With Learned Recovery Zones. *IEEE Robotics and Automation Letters*, 6(3): 4915–4922.
- Turchetta, M.; Kolobov, A.; Shah, S.; Krause, A.; and Agarwal, A. 2020. Safe Reinforcement Learning via Curriculum Induction. *Advances in Neural Information Processing Systems*, 33.
- Wahlström, N.; Schön, T. B.; and Deisenroth, M. P. 2015. From Pixels to Torques: Policy Learning with Deep Dynamical Models. *arXiv:1502.02251*.
- Watter, M.; Springenberg, J. T.; Boedecker, J.; and Riedmiller, M. 2015. Embed to Control: A Locally Linear Latent Dynamics Model for Control from Raw Images. In *Proceedings of the 28th International Conference on Neural Information Processing Systems - Volume 2*, 2746–2754.
- Yang, T.-Y.; Rosca, J.; Narasimhan, K.; and Ramadge, P. J. 2020. Projection-Based Constrained Policy Optimization. In *International Conference on Learning Representations*.