



Research Article

Turk J Agric For
36 (2012) 749-756
© TÜBİTAK
doi:10.3906/tar-1201-69

Some quality characteristics of selected durum wheat (*Triticum durum*) landraces

Abdolvahit SAYASLAN^{1,*}, Mehmet KOYUNCU¹, Ahmet YILDIRIM², Tuğba ESERKAYA GÜLEÇ²,
Özlem ATEŞ SÖNMEZOĞLU², Nejdet KANDEMİR³

¹Department of Food Engineering, Faculty of Engineering, Karamanoğlu Mehmetbey University, Karaman - TURKEY

²Department of Biology, Kamil Özdağ Faculty of Science, Karamanoğlu Mehmetbey University, Karaman - TURKEY

³Department of Field Crops, Faculty of Agriculture, Gaziosmanpaşa University, Tokat - TURKEY

Received: 31.01.2012 • Accepted: 26.04.2012

Abstract: Durum wheat (*Triticum durum*) is primarily used for the production of high-quality pasta products because of its certain superior characteristics. Wheat landraces are locally adapted diverse populations evolved through natural selection and are invaluable genetic resources for breeding programs. The search for new genetic resources all around the world has been underway to develop high-quality durum wheats. The purpose of this study was therefore to determine the pasta quality-associated characteristics of 12 durum wheat landraces (Bağacak, Beyaziye, İskenderiye, Sorgül, Karakılıçık, Beyaz Buğday, Ağ Buğdayı, Bintepe, Havrani, Çalibasan, Hacı Halil, and Akçakale) compared to 2 well-established high-quality durum wheat cultivars, Kyle and Zenit. Protein content and quality, pigment content, activities of oxidative enzymes (lipoxygenase, polyphenol oxidase, and peroxidase), kernel size, and endosperm vitreousness were measured as the major quality parameters. The landraces had significant differences ($P < 0.05$) in their quality characteristics. Of the landraces, Akçakale, Havrani, and Çalibasan were found to be quite promising for the processing of so-called al dente cooking pasta products, as judged by their elevated protein quantity and gluten quality. With respect to pigment content and oxidative enzymes that are central to the bright yellow color of pasta products, however, the landraces Havrani, Hacı Halil, and Sorgül were found to have great potential. In brief, several landraces have potential for high-quality pasta processing, while a few others can be used for breeding purposes.

Key words: Durum, landrace, macaroni/pasta, quality, wheat

Introduction

Durum wheat (*Triticum durum*) is preferred for the production of pasta or macaroni products, mainly because of its elevated level of yellow pigments and appropriate protein and gluten characteristics (Hoseney 1994; Bushuk 1998; Troccoli et al. 2000). It has been well established in durum wheat that protein quantity and gluten quality are widely responsible for

the so-called al dente pasta cooking characteristics, whereas yellow pigments and such oxidative enzymes as lipoxygenase (LOX), polyphenol oxidase (PPO), and peroxidase (POD) are effective on the color of pasta products (Troccoli et al. 2000; Aalami et al. 2007). In addition to color and protein characteristics, kernel size and vitreousness are also important in durum wheat quality, as they are strongly related to semolina yield, bright yellow appearance of semolina,

* E-mail: sayaslan@kmu.edu.tr

and cooking properties of pasta products (Hoseney 1994; Bushuk 1998; Troccoli et al. 2000; Dziki and Laskowski 2005).

The gluten quality of durum wheat, i.e. suitability for pasta processing, is commonly evaluated by sodium dodecyl sulfate (SDS) sedimentation volume and gluten index (GI) tests, whereas specific gliadin and glutenin proteins associated with gluten quality are respectively determined by acidic polyacrylamide gel electrophoresis (A-PAGE) and SDS polyacrylamide gel electrophoresis (SDS-PAGE) techniques (Feillet et al. 1989; Kovacs et al. 1995; Porceddu et al. 1998; Pena 2000; Sissons et al. 2005; Cubadda et al. 2007; Sakin et al. 2011a, 2011b). Of the gliadin proteins, γ -gliadin 45, genetically linked with LMW-2 glutenins, is highly correlated with al dente cooking characteristics of pasta, whereas γ -gliadin 42, genetically linked with LMW-1 glutenins, is associated with poor pasta-cooking characteristics (Feillet et al. 1989; Pogna et al. 1990; Troccoli et al. 2000; D'Ovidio and Masci 2004; Edwards et al. 2007). It is therefore essential that durum wheat genotypes with high protein content accompanied by γ -gliadin 45/LMW-2 proteins be used in order to obtain al dente cooking pasta products (Troccoli et al. 2000; Sakin et al. 2011a, 2011b). For the production of pasta goods with bright yellow color, however, wheat genotypes that are high in yellow pigments but low in oxidative enzymes should be utilized (Aalami et al. 2007; Sakin et al. 2011b). Indeed, the search for new genetic resources has been underway all over the world in order to develop high-quality durum wheat genotypes.

Turkey possesses rich genetic resources and suitable ecological regions for durum wheat production (Şehirali and Özgen 1987). In addition to registered cultivars, many durum wheat landraces have been grown to some extent in the rural areas of Turkey. However, limited research has been conducted on the specific gliadin and glutenin proteins (Eser 1996; Sakin et al. 2011b) or the yellow pigments and oxidative enzymes (Pekin and Çakmaklı 1987; Coşkun and Ercan 2003; Sakin et al. 2011b) of durum wheat genotypes grown in Turkey. Altıntaş et al. (2008) reported that the genetic diversity of commonly grown registered durum wheat cultivars of Turkey was too narrow, since the great majority of the cultivars were bred from CIMMYT germplasm.

Other researchers (Dreisigacker et al. 2004; Karagöz and Zencirci 2004; Zencirci and Karagoz 2005) reported that Turkish wheat landraces host a broad genetic diversity with unique and markedly different traits. Those data imply that the narrow genetic base of durum wheat in Turkey could be broadened using local landraces. It is well known that landraces are locally adapted diverse populations evolved through natural selection and that they are invaluable genetic resources contributing to many breeding programs around the world because of their homozygous nature with heterogeneous agronomic and quality traits (Allard and Bradshaw 1964; Feldman and Sears 1981; Hart 2001; Jones et al. 2008; Newton et al. 2010). The purpose of this study was therefore to investigate the pasta quality-associated characteristics of selected Turkish durum wheat landraces compared to 2 well-established high-quality durum wheat cultivars.

Material and methods

Materials

A total of 14 durum wheat genotypes (12 landraces and 2 registered cultivars) were included in the study. Durum landraces (Bağacak, Beyaziye, İskenderiye, Sorgül, Karakılçık, Beyaz Buğday, Ağ Buğdayı, Bintepe, Havrani, Çalibasan, Hacı Halil, and Akçakale) were obtained from various institutions in Turkey (Field Crops Department of Çukurova University, Adana; Aegean Agricultural Research Institute, İzmir; and Southeast Agricultural Research Institute, Şanlıurfa). Of the registered durum cultivars, Kyle, a Canadian wheat cultivar well known for its superior pasta-cooking quality, was obtained from the Semiarid Prairie Agricultural Research Center, Canada, whereas Zenit, a distinguished wheat of Italian origin known for its prominent yellow pigment content, was obtained from the Southeast Agricultural Research Institute, Şanlıurfa, Turkey. The landraces and registered cultivars were grown in the experimental field of the Soil and Water Research Institute, Tokat, Turkey, during the growth years of 2007 and 2008. Marquis wheat, used as the A-PAGE standard, was obtained from the Central Research Institute of Field Crops, Ankara, Turkey. Kyle or Avonlea wheat that was used as a control for the γ -gliadin 45 protein was acquired from the Semiarid Prairie Agricultural Research Center, Canada.

Methods

All quality measurements were carried out using milled samples on a laboratory mill to pass through a 1.0-mm screen (Sakin et al. 2011a, 2011b). The moisture content of the wheat was determined by oven drying at 130 °C for 1 h by AACC method 44-15A (AACC 2000), and all analytical results were corrected to 14% moisture basis. The protein content of the wheat was assayed through the Kjeldahl procedure ($N \times 5.7$) by AACC method 46-10. Gluten index (GI) was determined using the Glutomatic System (Perten Instruments, Sweden) according to AACC method 38-12A. SDS sedimentation volumes were measured by AACC method 56-70, and specific sedimentation volumes were calculated by dividing the SDS sedimentation volumes by the protein contents.

Yellow-colored pigment (mainly carotenoid) contents of the wheat were assayed using their water-saturated n-butanol extracts with spectroscopic measurements at 435.8 nm by AACC method 14-50. LOX activities were determined by the spectroscopic measurement of the conjugated diene formation upon the reaction of wheat extracts with linoleic acid substrate as described by Sakin et al. (2011a, 2011b). One unit of LOX activity (EU) was described as 1.0 unit min^{-1} change in the absorbance under the assay conditions and reported as EU g^{-1} wheat. PPO activities were determined through the method of Coseteng and Lee (1987) as slightly modified by Aalami et al. (2007), where color changes in the mixture of wheat extract-catechol substrate were monitored at 420 nm. One unit of PPO activity was described as 0.1 unit min^{-1} change in the absorbance under the assay conditions and reported as EU g^{-1} wheat. POD activities were measured according to the method of Aparicio-Cuesta et al. (1992) as slightly modified by Aalami et al. (2007), where colored product formation upon reaction of wheat extracts with *o*-dianisidine substrate in the presence of hydrogen peroxide was monitored at 460 nm. One unit of POD activity was described as 1.0 unit min^{-1} change in the absorbance under the assay conditions and reported as EU g^{-1} wheat.

Wheat genotypes were screened for γ -gliadin 42 or γ -gliadin 45 proteins using the A-PAGE technique as described originally by Bushuk and Zillman (1978)

and later modified by Khan et al. (1985) and Köksel et al. (2000). For this purpose, 5 kernels were randomly selected from each genotype and ground separately using a mortar and pestle. Each ground kernel was transferred to a 2-mL centrifuge tube containing about 3-fold 70% aqueous ethanol, which was then vortexed thoroughly, left at room temperature for 30 min with intermittent vortexing (10-min intervals) for protein extraction, and centrifuged ($>10,000$ rpm for 10 min) to obtain a clear supernatant. Upon appropriate pretreatments, the extracts were loaded onto a precast A-PAGE system, run at 15 °C for 3-4 h at 500 V, stained with Coomassie Brilliant Blue R-250 dye preparation, and then evaluated as described by Bushuk and Zillman (1978) and Khan et al. (1985). For the identification of the gliadin proteins, Marquis wheat was used as the standard, whereas Kyle or Avonlea wheat was used as a control for γ -gliadin 45 protein.

Grain physical properties of thousand-kernel weight and kernel vitreousness were respectively determined as per Köksel et al. (2000) and Sakin et al. (2011b).

The data obtained by the randomized complete design with 3 replications were subjected to analysis of variance (ANOVA). Whenever the differences were significant ($P < 0.05$), Duncan's multiple range test was applied to separate the means.

Results

Protein content and gluten quality

Protein contents of the genotypes ranged from 10.7% to 16.8% with a mean of 13.1%, and differences were statistically significant ($P < 0.05$) (Table 1). With the exception of İskenderiye, Sorgül, Beyaz Buğday, and Bintepe, the landraces accumulated quite high levels of protein. Protein quality data for the genotypes, which differed significantly ($P < 0.05$), are listed in Table 1. SDS sedimentation and specific sedimentation volumes of the genotypes ranged from 20.5 to 38.0 mL (mean: 25.7 mL) and from 1.46 to 3.04 mL (mean: 1.99 mL), respectively, whereas high-quality cultivars Zenit and Kyle had SDS sedimentation and specific sedimentation volumes of 28.4 and 27.3 mL and of 2.43 and 2.17 mL, respectively. The landraces were also screened for the

Table 1. Protein content and gluten quality of selected Turkish durum wheat landraces^a.

Wheat genotype	Protein content (N × 5.7; %)		Sedimentation volume (mL)		Specific sedimentation volume (mL)		Gluten index		γ-Gliadin type
Bağacak	11.8	ab*	20.5	a*	1.74	a-d*	61	e*	γ-42
Beyaziye	14.9	cde	21.8	ab	1.46	a	42	a-e	γ-45
İskenderiye	11.0	a	20.5	a	1.86	bcd	38	a-e	γ-45
Sorgül	11.3	ab	21.3	a	1.88	cde	51	cde	γ-45
Karakılçık	13.7	a-d	21.5	a	1.58	abc	55	de	γ-45
Beyaz Buğday	10.7	a	26.0	bc	2.43	f	21	ab	γ-45
Ağ Buğdayı	15.0	cde	27.2	cd	1.85	bcd	32	a-d	γ-42
Bintepe	11.4	ab	21.3	a	1.87	bcd	26	abc	γ-42
Havrani	15.7	de	31.8	de	2.02	de	44	a-e	γ-45
Çalibasan	16.8	e	32.8	e	1.95	de	41	a-e	γ-45
Hacı Halil	14.1	b-e	21.3	a	1.51	ab	47	b-e	γ-42
Akçakale	12.5	abc	38.0	f	3.04	g	96	f	γ-45
Zenit	11.7	ab	28.4	cde	2.43	f	50	cde	γ-45
Kyle	12.6	abc	27.3	cd	2.17	f	65	e	γ-45
Range	10.7-16.8		20.5-38.0		1.46-3.04		21-96		-
Mean	13.1		25.7		1.99		47.8		-

^aValues are based on 14% moisture basis.

*Different letters in a column indicate significant difference ($P < 0.05$).

presence or absence of γ-gliadin 42 and γ-gliadin 45 proteins. Of the 12 landraces, 8 genotypes possessed the γ-gliadin 45 protein associated with improved pasta-cooking quality, whereas 4 genotypes contained the γ-gliadin 42 protein linked with poor pasta-cooking characteristics. Typical A-PAGE gel pictures of 2 landraces are given in the Figure.

Pigment content and activities of oxidative enzymes

Yellow pigment contents and activities of the oxidative enzymes (LOX, PPO, POD) are listed in Table 2. Pigment contents of the genotypes ranged from 3.67 to 8.37 mg kg⁻¹ with a mean of 5.53 mg kg⁻¹. Cultivar Zenit, a well-known high-pigment cultivar of Italian origin (Sakin et al. 2011b), contained the highest level of pigment (8.37 mg kg⁻¹) in this study. The activity of the LOX, an enzyme responsible for color-bleaching in pasta products (Borrelli et al. 1999, 2003; Troccoli et al. 2000; Aalami et al. 2007), ranged from 21.4 to 37.4 EU g⁻¹ with a mean of 27.5 EU g⁻¹ (Table 2). In terms of PPO and POD enzymes, which cause darkening of pasta products through the oxidation of phenolic substances (Taha and Sagi

1987; Fraignier et al. 2000; Aalami et al. 2007), the genotypes had activities ranging from 7.5 to 12.8 EU g⁻¹ and from 64.6 to 133.4 EU g⁻¹, respectively (Table 2).

Kernel physical properties

The thousand-kernel weights and endosperm vitreousness of the wheats are presented in Table 2. Thousand-kernel weights of the genotypes ranged from 42.3 to 56.2 g with a mean of 48.9 g, whereas endosperm vitreousness varied between 92.5% and 99.3% with a mean of 97.6%.

Discussion

Durum wheat protein content and gluten characteristics have a decisive role in pasta-cooking properties (Feillet et al. 1989; Bushuk 1998; Troccoli et al. 2000). For the production of high-quality pasta products, durum wheat is generally expected to contain about 13% protein (Özkaya and Özkaya 1993; Hosney 1994; Elgün and Ertugay 1995). In this study, protein contents of the genotypes were found to vary

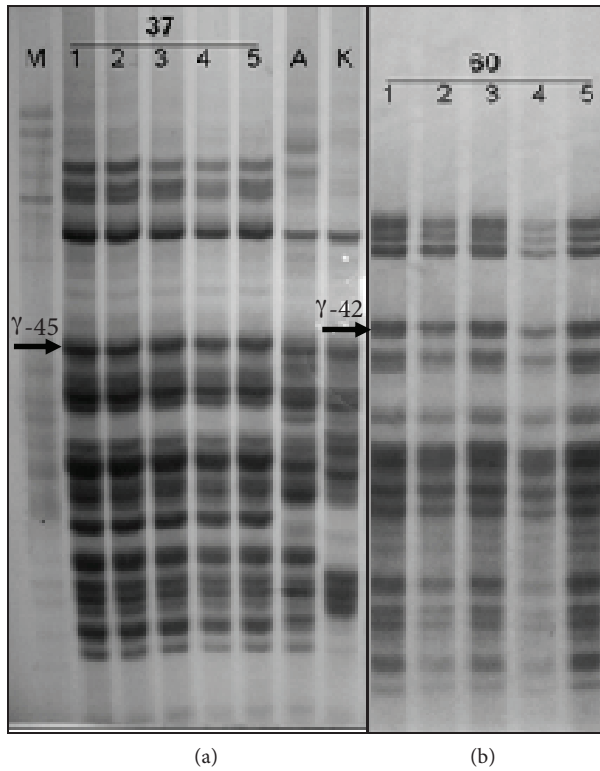


Figure. Selected A-PAGE gel pictures of durum wheat landraces: (a) İskenderiye, (b) Ağ Buğdayı (M = Marquis as A-PAGE standard, A = Avonlea as control, K = Kyle as control).

from 10.7% to 16.8% (Table 1). Other researchers (Genç et al. 1993; Sözen and Yağdı 2005; Sakin et al. 2011a, 2011b) reported protein levels ranging from 10.9% to 13.8% for Turkish durum wheat genotypes grown in different environmental conditions. It is noteworthy that the landraces Beyaziye, Ağ Buğdayı, Havrani, Çalibasan, and Hacı Halil accumulated quite high levels (>14%) of protein.

The viscoelastic and cohesive nature of gluten proteins, i.e. gluten quality, is to a large extent genetically controlled (Payne et al. 1982; Bushuk 1998; Porceddu et al. 1998; Troccoli et al. 2000). It has been widely recognized that SDS sedimentation volume is influenced by both protein content and gluten quality, while specific sedimentation volume, which is the ratio of SDS sedimentation volume to protein content, was mostly affected by gluten quality (Cubadda et al. 2007; Sakin et al. 2011b). In this study, SDS sedimentation and specific sedimentation volumes of the genotypes ranged from 20.5 to 38.0 mL and from 1.46 to 3.04 mL (Table 1). In other

studies, SDS sedimentation volumes of durum wheat genotypes grown in Turkey were determined to vary between 19.5 and 31.3 mL (Sözen and Yağdı 2005) and 17.3 and 28.7 mL (Sakin et al. 2011b) with specific sedimentation volumes between 1.60 and 2.52 mL (Sakin et al. 2011b). It is apparent that the landraces Beyaz Buğday, Havrani, Çalibasan, and especially Akçakale were of comparable protein quality to Zenit and Kyle. As for GI, which somewhat reflects gluten quality (Cubadda et al. 2007; Edwards et al. 2007), the genotypes had values varying from 21 to 96 with an average of 47.8 (Table 1). Among the landraces, Akçakale, Bağacak, and Karakılçık had GI values comparable to those of Kyle and Zenit. With few exceptions, specific sedimentation volumes and GI values of the genotypes showed a similar trend (Table 1), which was also observed in durum wheat by Pena (2000) and Cubadda et al. (2007).

The relationship between γ -gliadin type and certain gluten quality parameters are presented in Table 3. Although mean protein contents of the landraces with γ -gliadin 45 and 42 were quite similar (13.3% vs. 13.1%), the landraces containing γ -gliadin 45 demonstrated higher mean SDS sedimentation volume (26.7 mL vs. 22.6 mL), specific sedimentation volume (2.03 mL vs. 1.74 mL), and GI values (48.5 vs. 41.7). These results are in agreement with the previous findings that durum wheats carrying γ -gliadin 45 protein were better suited for pasta products with superior cooking quality (Nachit et al. 1995; Pena 2000; Edwards et al. 2007; Sakin et al. 2011b). Overall assessment of protein content, SDS sedimentation and specific sedimentation volumes, GI, and γ -gliadin type indicate that Akçakale, Havrani, and Çalibasan landraces are quite promising for high-quality pasta production.

The color of pasta products is mainly influenced by yellow-colored pigments and such oxidative enzymes as LOX, PPO, and POD (Kruger and Reed 1988; Troccoli et al. 2000; Coşkun and Ercan 2003; Aalami et al. 2007). For the production of bright yellow pasta products, durum wheats with high pigment content and low oxidative enzyme activity are required (Aalami et al. 2007; Sakin et al. 2011b). It is generally reported that the pigment contents of durum wheats fluctuate between 4 and 8 mg kg⁻¹ (Köksel et al. 2000; Troccoli et al. 2000). Of the

Table 2. Physical properties, pigment contents, and oxidative enzymes of selected Turkish durum wheat landraces^a.

Wheat genotype	Thousand-kernel weight (g)	Kernel vitreousness (%)	Pigment content (mg kg ⁻¹)	Lipoxygenase (LOX) activity (EU g ⁻¹)	Polyphenol oxidase (PPO) activity (EU g ⁻¹)	Peroxidase (POD) activity (EU g ⁻¹)						
Bağacak	52.1	<i>c-f*</i>	96.6	<i>b*</i>	5.27	<i>cde*</i>	28.2	<i>ef*</i>	9.7	<i>bc*</i>	110.4	<i>b-e*</i>
Beyaziye	47.7	<i>bc</i>	98.5	<i>bcd</i>	5.11	<i>c</i>	25.3	<i>cd</i>	9.2	<i>bc</i>	114.3	<i>b-e</i>
İskenderiye	49.9	<i>cde</i>	98.2	<i>bcd</i>	5.45	<i>e</i>	33.1	<i>h</i>	12.8	<i>e</i>	133.4	<i>de</i>
Sorgül	53.4	<i>ef</i>	99.3	<i>d</i>	5.98	<i>g</i>	24.2	<i>abc</i>	10.3	<i>cd</i>	107.1	<i>bcd</i>
Karakılçık	42.3	<i>a</i>	99.2	<i>cd</i>	5.39	<i>de</i>	30.2	<i>fg</i>	11.3	<i>d</i>	117.8	<i>cde</i>
Beyaz Buğday	55.4	<i>f</i>	97.0	<i>bcd</i>	3.67	<i>a</i>	22.2	<i>ab</i>	7.5	<i>a</i>	64.6	<i>a</i>
Ağ Buğdayı	50.0	<i>cd</i>	98.5	<i>bcd</i>	5.18	<i>cd</i>	37.4	<i>i</i>	8.6	<i>ab</i>	130.1	<i>de</i>
Bintepe	56.2	<i>def</i>	97.4	<i>bcd</i>	5.17	<i>cd</i>	31.4	<i>gh</i>	9.8	<i>bc</i>	112.1	<i>b-e</i>
Havrani	47.9	<i>bc</i>	98.0	<i>bcd</i>	6.18	<i>h</i>	27.7	<i>def</i>	8.5	<i>ab</i>	88.8	<i>abc</i>
Çalibasan	47.0	<i>bc</i>	97.5	<i>bcd</i>	5.64	<i>f</i>	30.5	<i>fgh</i>	11.5	<i>de</i>	128.5	<i>de</i>
Hacı Halil	49.1	<i>bc</i>	96.9	<i>bc</i>	6.06	<i>gh</i>	24.4	<i>bc</i>	8.5	<i>ab</i>	114.4	<i>b-e</i>
Akçakale	48.0	<i>bc</i>	98.5	<i>bcd</i>	4.07	<i>b</i>	23.5	<i>abc</i>	10.2	<i>cd</i>	85.4	<i>ab</i>
Zenit	42.4	<i>a</i>	92.5	<i>a</i>	8.37	<i>i</i>	21.4	<i>a</i>	11.3	<i>d</i>	121.3	<i>de</i>
Kyle	43.4	<i>ab</i>	97.6	<i>bcd</i>	5.89	<i>g</i>	25.7	<i>cde</i>	9.7	<i>bc</i>	75.1	<i>a</i>
Range	42.3-56.2		92.5-99.3		3.67-8.37		21.4-37.4		7.5-12.8		64.6-133.4	
Mean	48.9		97.6		5.53		27.5		9.9		107.4	

^aValues are based on 14% moisture basis.

*Different letters in a column indicate significant difference ($P < 0.05$).

landraces, Havrani, Hacı Halil, Sorgül, and Çalibasan prevailed with higher pigment contents, whereas Sorgül, Beyaz Buğday, Havrani, Hacı Halil, and Akçakale were found to have lower activities of the oxidative enzymes. Other researchers also reported that durum wheat genotypes grown in Turkey (Coşkun and Ercan 2003) and India (Aalami et al. 2007) exhibited large variations in pigment contents and oxidative enzymes. When judged by pigment contents and the activities of the oxidative enzymes that are central to the color of pasta products, the

landraces Havrani, Hacı Halil, and Sorgül have great potential to produce yellow-colored pasta products.

Kernel size, hardness, and vitreousness are among the physical features that effectively determine end-use quality of durum wheat (Hoseney 1994; Bushuk 1998). High-quality durum wheat is expected to have larger kernels with hard and vitreous endosperm in order to obtain semolina with higher yield and brightness (Hoseney 1994; Elgün and Ertugay 1995; Bushuk 1998; Troccoli et al. 2000; Dziki and Laskowski 2005). It is evident from the physical data

Table 3. Relationship between γ -gliadin type and protein quality of selected Turkish durum wheat landraces^a.

γ -Gliadin type	Mean protein content (N \times 5.7; %)	Mean sedimentation volume (mL)	Mean specific sedimentation volume (mL)	Mean gluten index
γ -Gliadin 45 ($n = 8$)	13.3	26.7	2.03	48.5
γ -Gliadin 42 ($n = 4$)	13.1	22.6	1.74	41.5

^aValues are based on 14% moisture basis.

(Table 2) that all landraces included in this study were of adequate kernel size and vitreousness required for semolina milling and pasta processing.

Quality characteristics of 12 durum wheat landraces were investigated in comparison with those of 2 high-quality durum wheat cultivars, namely Kyle and Zenit. The landraces Akçakale, Havrani, and Çalibasan were found to be quite promising for superior pasta-cooking characteristics as judged by their elevated protein contents and gluten qualities. With respect to pigment content and oxidative enzymes that are central to the bright yellow color

of pasta products, however, landraces Havrani, Hacı Halil, and Sorgül were found to be of great potential. On the whole, several durum wheat landraces have potential for high-quality pasta processing, while a few others can be used for breeding purposes.

Acknowledgments

This research was financially supported by the Scientific and Technological Research Council of Turkey (TÜBİTAK-107O004) within the framework of COST-FA-0604 TritiGen Action.

References

- AACC (2000) AACC Approved Methods, 10th ed. American Association of Cereal Chemists International, St. Paul, Minnesota, USA.
- Aalami M, Leelavathi K, Rao UJSP (2007) Spaghetti making potential of Indian durum wheat varieties in relation to their protein, yellow pigment and enzyme contents. *Food Chem* 100: 1243-1248.
- Allard RW, Bradshaw AD (1964) Implications of genotype-environment interaction in applied plant breeding. *Crop Sci* 4: 503-508.
- Altıntaş S, Toklu F, Kafkas S, Kilian B, Brandolini A, Özkan H (2008) Estimating genetic diversity in durum and bread wheat cultivars from Turkey using AFLP and SAMPL markers. *Plant Breeding* 127: 9-14.
- Aparicio-Cuesta MP, Mateos-Notario MP, Rivas-Gonzalo JC (1992) Sensory evaluations and changes in peroxidase activity during storage of frozen green beans. *J Food Sci* 57: 1129-1131, 1143.
- Borrelli GM, DeLeonardis AM, Fares C, Platani C, DiFonzo N (2003) Effects of modified processing conditions on oxidative properties of semolina dough and pasta. *Cereal Chem* 80: 225-231.
- Borrelli GM, Troccoli A, DiFonzo N, Fares C (1999) Durum wheat lipoxygenase activity and other parameters that affect pasta color. *Cereal Chem* 76: 335-340.
- Bushuk W (1998) Wheat breeding for end-product use. *Euphytica* 100: 137-145.
- Bushuk W, Zillman RR (1978) Wheat cultivar identification by gliadin electrophoregrams. I. Apparatus, method and nomenclature. *Can J Plant Sci* 58: 505-515.
- Coseteng MY, Lee CY (1987) Changes in apple polyphenol oxidase and polyphenol concentrations in relation to degree of browning. *J Food Sci* 52: 985-989.
- Coşkun E, Ercan R (2003) Makarnalık buğdaylarda lipoksigenaz enzim aktivitesinin belirlenmesi. *Gıda* 28: 221-226.
- Cubadda RE, Carcea M, Marconi E, Trivisonno MC (2007) Influence of protein content on durum wheat gluten strength determined by the SDS sedimentation test and by other methods. *Cereal Food World* 52: 273-277.
- D'Ovidio R, Masci S (2004) The low-molecular-weight glutenin subunits of wheat gluten. *J Cereal Sci* 39: 321-339.
- Dreisigacker S, Zhang P, Warburton ML, Ginkel M van, Hoisington D, Bohn M, Melchinger AE (2004) SSR and pedigree analyses of genetic diversity among CIMMYT wheat lines targeted to different megaenvironments. *Crop Sci* 44: 381-388.
- Dziki D, Laskowski J (2005) Wheat kernel physical properties and milling process. *Acta Agrophys* 6: 59-71.
- Edwards NM, Gianibelli MC, McCaig TN, Clarke JM, Ames NP, Larroque OR, Dexter JE (2007) Relationships between dough strength, polymeric protein quantity and composition for diverse durum wheat genotypes. *J Cereal Sci* 45: 140-149.
- Elgün A, Ertugay Z (1995) Tahıl İşleme Teknolojisi. Atatürk Üniversitesi Ziraat Fakültesi, Erzurum.
- Eser V (1996) Makarnalık Buğdayda (*Triticum durum* Desf.) Bazı Kalite Özelliklerinin ve Gliadin Bant Yapılarının Diallel Analiz Metodu ile Araştırılması. Doktora Tezi. Selçuk Üniversitesi, Fen Bilimleri Enstitüsü, Tarla Bitkileri Anabilim Dalı, Konya.
- Feillet R, Ait-Mouh O, Kobrehel K, Autran JC (1989) The role of low molecular weight glutenin proteins in the determination of cooking quality of pasta products: an overview. *Cereal Chem* 66: 26-30.
- Feldman M, Sears ER (1981) The wild gene resources of wheat. *Sci Am* 244: 102-112.
- Fraignier MP, Michaux-Ferriere N, Kobrehel K (2000) Distribution of peroxidases in durum wheat (*Triticum durum*). *Cereal Chem* 77: 11-17.
- Genç İ, Veli S, Tükel SS, Yağbasanlar T, Bilgin R, Özkan H (1993) Makarnalık buğdayda (*Triticum durum*) elektroforetik ve bazı biyokimyasal yöntemlerle kalite özelliklerinin belirlenmesi. In: Makarnalık Buğday ve Mamulleri Sempozyumu, Ankara.

- Hart G (2001) Molecular Marker Maps of the Cultivated Wheats and Other *Triticum* Species, 2nd ed. Kluwer Academic, London, UK.
- Hoseney RC (1994) Principles of Cereal Science and Technology, 2nd ed. American Association of Cereal Chemists, St. Paul, Minnesota, USA.
- Jones H, Lister DL, Bower MA, Leigh FJ, Smith LM, Jones MK (2008) Approaches and constraints of using existing landrace and extant plant material to understand agricultural spread in prehistory. *Plant Genet Resour* 6: 98-112.
- Karagöz A, Zencirci N (2004) Variation in wheat (*Triticum* spp.) landraces from different altitudes of three regions of Turkey. *Genet Resour Crop Ev* 52: 775-785.
- Khan K, Hamada AS, Patek J (1985) Polyacrylamide gel electrophoresis for wheat variety identification: effect of variables on gel properties. *Cereal Chem* 62: 310-313.
- Kovacs MIP, Howes NK, Leslie D, Zawistowski J (1995) Effect of two low molecular weight glutenin subunits on durum wheat pasta quality parameters. *Cereal Chem* 72: 85-87.
- Köksel H, Sivri D, Özboy Ö, Başman A, Karacan H (2000) *Hububat Laboratuvarı El Kitabı*. Hacettepe Üniversitesi Mühendislik Fakültesi, Ankara.
- Kruger JE, Reed G (1988) Enzymes and color. In: *Wheat: Chemistry and Technology*, Vol. 1, 3rd ed. (Ed. Y Pomeranz). American Association of Cereal Chemists, St. Paul, Minnesota, USA, pp. 441-500.
- Nachit MM, Baum M, Impiglia A, Ketata H (1995) Studies on some grain quality traits in durum wheat grown in Mediterranean environments. In: *Durum Wheat Quality in the Mediterranean Region* (Eds. N di Fonzo, F Kaan, M Nachit). CIHEAM-IAMZ, Zaragoza, Spain, pp. 181-187.
- Newton AC, Akar T, Baresel JP, Bebeli PJ, Bettencourt E, Bladenopoulos KV, Czembor JH, Fasoula DA, Katsiotis A, Koutis K, Koutsika-Sotiriou M, Kovacs G, Larsson H, Pinheiro de Carvalho MAA, Rubiales D, Russel J, Dos Santos TMM, Vaz Patto MC (2010) Cereal landraces for sustainable agriculture. A review. *Agron Sustain Dev* 30: 237-269.
- Özkaya H, Özkaya B (1993) Makarna kalitesinde buğday bileşiminin önemi. In: *Makarnalık Buğday ve Mamulleri Sempozyumu*, Ankara.
- Payne PI, Holt LM, Lawrence GJ, Law CN (1982) The genetics of gliadin and glutenin, the major storage proteins of the wheat endosperm. *Plant Food Hum Nutr* 31: 229-241.
- Pekin F, Çakmaklı Ü (1987) Bazı Türk ıslah çeşidi buğdayların kimi teknolojik ve renk özellikleri üzerinde araştırma. *Türkiye Tahıl Sempozyumu*, Bursa.
- Pena RJ (2000) Durum wheat for pasta and bread-making: comparison of methods used in breeding to determine gluten quality-related parameters. In: *Durum Wheat Improvement in the Mediterranean Region: New Challenges* (Eds. C Royo, MM Nachit, N di Fonzo, JL Araus). CIHEAM-IAMZ, Zaragoza, Spain, pp. 423-430.
- Pogna NE, Aufran JC, Mellini F, Lafiandra D, Feillet P (1990) Chromosome 1B-encoded gliadins and glutenin subunits in durum wheat: genetics and relationship to gluten strength. *J Cereal Sci* 11: 15-34.
- Porceddu E, Turchetta T, Masci S, D'Ovidio R, Lafiandra D, Kasarda DD, Impiglia A, Nachit MM (1998) Variation in endosperm protein composition and technological quality properties in durum wheat. *Euphytica* 100: 197-205.
- Sakin MA, Düzdemir O, Sayaslan A, Yüksel F (2011a) Stability properties of certain durum wheat genotypes for major quality characteristics. *Turk J Agric For* 35: 343-355.
- Sakin MA, Sayaslan A, Duzdemir O, Yuksel F (2011b) Quality characteristics of registered cultivars and advanced lines of durum wheats grown in different ecological regions of Turkey. *Can J Plant Sci* 91: 261-271.
- Sissons MJ, Ames NP, Hare RA, Clarke JM (2005) Relationship between glutenin subunit composition and gluten strength measurements in durum wheat. *J Sci Food Agric* 85: 2445-2452.
- Sözen E, Yağdı K (2005) Bazı ileri makarnalık buğday (*Triticum durum* Desf.) hatlarının kalite özelliklerinin belirlenmesi. *Uludağ Üniversitesi Ziraat Fakültesi Dergisi* 19: 69-81.
- Şehirli S, Özgen M (1987) *Bitkisel Gen Kaynakları*. Ankara Üniversitesi Ziraat Fakültesi, Ankara.
- Taha SA, Sagi F (1987) Relationship between chemical composition of durum wheat semolina and macaroni quality. II. Ash, carotenoid pigments and oxidative enzymes. *Cereal Res Commun* 15: 123-129.
- Trocchi A, Borrelli GM, DeVita P, Fares C, Di Fonzo N (2000) Durum wheat quality: a multidisciplinary concept. *J Cereal Sci* 32: 99-113.
- Zencirci N, Karagöz A (2005) Effect of developmental stages length on yield and some quality traits of Turkish durum wheat (*Triticum turgidum* L. convar. *durum* (Desf.) Mackey) landraces: influence of developmental stages length on yield and quality of durum wheat. *Genet Resour Crop Ev* 52: 765-774.