

5-1-2011

Growth

Jeremy Gomez
NSU University School

Follow this and additional works at: http://nsuworks.nova.edu/uschool_litmag



Part of the [Poetry Commons](#)

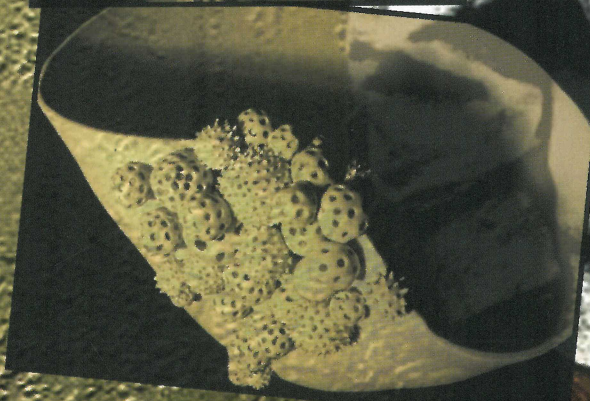
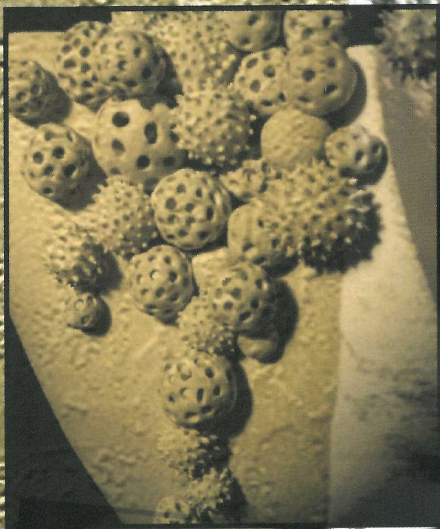
Recommended Citation

Gomez, Jeremy (2011) "Growth," *Hieroglyphics: the NSU University School Literary Magazine*: Vol. 17, Article 44.
Available at: http://nsuworks.nova.edu/uschool_litmag/vol17/iss1/44

This Poem is brought to you for free and open access by the University School at NSUWorks. It has been accepted for inclusion in Hieroglyphics: the NSU University School Literary Magazine by an authorized administrator of NSUWorks. For more information, please contact nsuworks@nova.edu.

Growth

by Jeremy Gomez



Artwork by:
Amanda Wald

Photography by:
Amanda Lowitz

In the corner
On the shelf
Lies a little lump of clay
By candlelight some careful hands
Morph it from its natural shape

Figure from former formlessness blooms
As definition creeps into its weight
Vague features craft from great substance
By blazing sun and blinding light
Proud matter hardens from sad state

With loving detail gentle hands
Paint upon the form its face
Matte dull eyes and glossy cheeks
Misconstrue a human frame

In the court of fools
A doll is placed
Shaded by lush leaf and covered by dank heat
Hungry onlookers and beasts clothed in pink skin
Strip from its shell bright paint
Break from its core firm strength
And shake from the doll
Its shape

A misshapen and misshapen again
Doll lies in the earth
Loved only by its kindred clay
Watched only by the pelting rain.