

2014

# Academic Impressions, 2014

Nova Southeastern University

Follow this and additional works at: [http://nsuworks.nova.edu/hpd\\_cdm\\_newsletters](http://nsuworks.nova.edu/hpd_cdm_newsletters)



Part of the [Dental Public Health and Education Commons](#)

---

## NSUWorks Citation

Nova Southeastern University, "Academic Impressions, 2014" (2014). *Newsletters*. Book 8.  
[http://nsuworks.nova.edu/hpd\\_cdm\\_newsletters/8](http://nsuworks.nova.edu/hpd_cdm_newsletters/8)

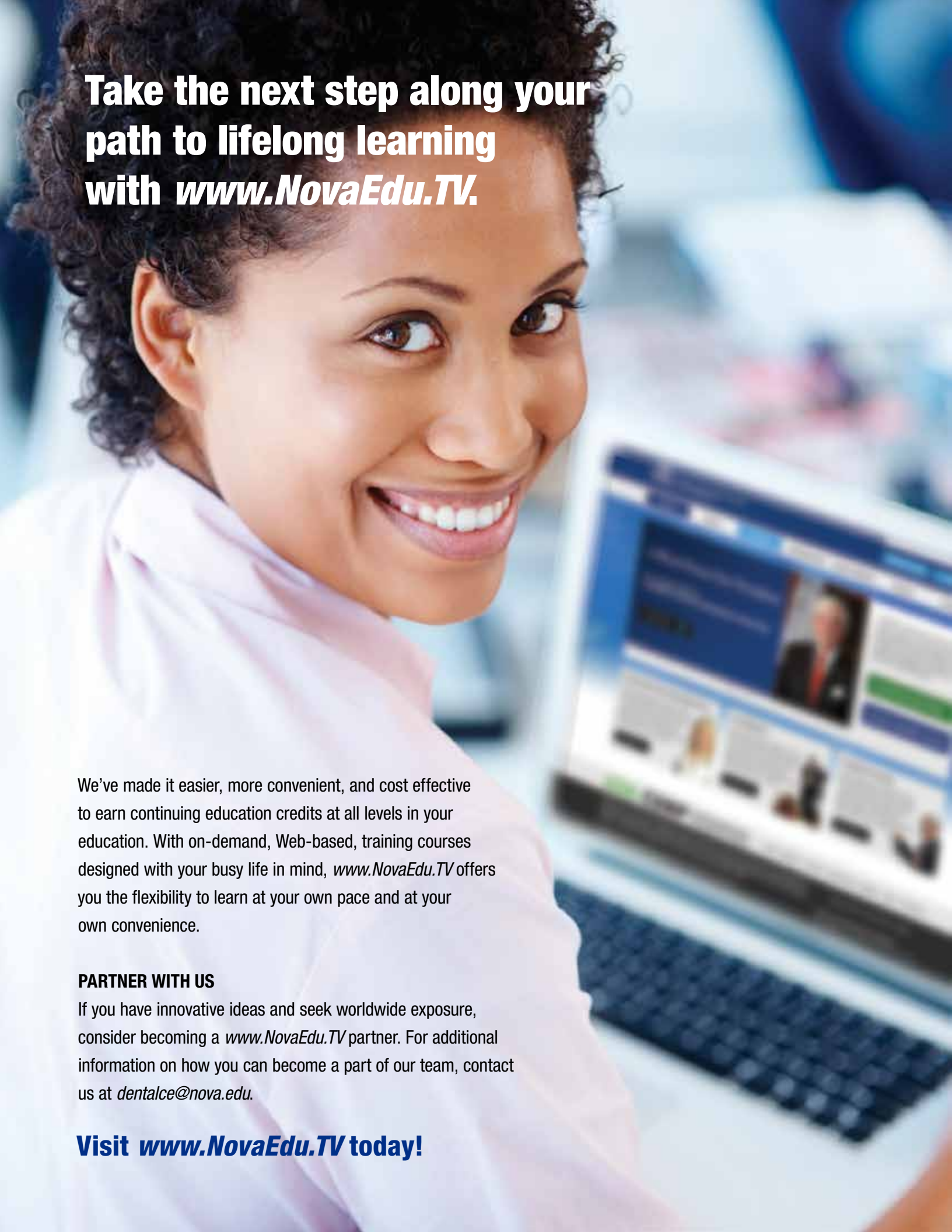
This Article is brought to you for free and open access by the College of Dental Medicine at NSUWorks. It has been accepted for inclusion in Newsletters by an authorized administrator of NSUWorks. For more information, please contact [nsuworks@nova.edu](mailto:nsuworks@nova.edu).

# Academic Impressions

YOUR PATH TO LIFELONG LEARNING

*Sun, Sand, and Surf—  
Continuing Education Can Be Fun!*



A close-up photograph of a woman with dark, curly hair, smiling warmly. She is looking towards a laptop computer. The laptop screen shows a website with a blue header, a profile picture, and several smaller images or thumbnails. The background is softly blurred, suggesting an office or educational setting.

**Take the next step along your  
path to lifelong learning  
with *www.NovaEdu.TV*.**

We've made it easier, more convenient, and cost effective to earn continuing education credits at all levels in your education. With on-demand, Web-based, training courses designed with your busy life in mind, *www.NovaEdu.TV* offers you the flexibility to learn at your own pace and at your own convenience.

**PARTNER WITH US**

If you have innovative ideas and seek worldwide exposure, consider becoming a *www.NovaEdu.TV* partner. For additional information on how you can become a part of our team, contact us at *dentalce@nova.edu*.

**Visit *www.NovaEdu.TV* today!**

# Table of Contents



- 2** Assistant Dean's Message
- 3** The Roots of Dental Medicine
- 20** Course Calendar 2014-2015
- 40** Course Venues



- 5** Sports Medicine Health Care
- 6** Health and Wellness
- 7** Oral Cancer
- 9** Alumni and Friends Caribbean Cruise
- 10** Spanish for the Health Care Provider
- 11** Lean Six Sigma for Health Care
- 13** Executive Practice Management Series
- 14** Botulinum Toxin and Derma Fillers
- 15** Herbal Medicine and Geriatric Care
- 17** Forensic Science
- 19** Sleep Apnea Series



- 23** Crest/Oral B Focused Series
- 24** Dental Management of Medically Compromised Patients
- 25** Dentistry and Dermatology
- 27** Implantology and Implant Osteotomies Courses
- 28** Nitrous Oxide and Airway Management Courses
- 29** Pharmacology Update and Endodontic Concepts
- 31** A New Era in Treatment Planning
- 32** Aesthetic Dentistry
- 33** Accelerated Osteogenic Orthodontics
- 35** Technology



- 37** Dental Health Care Team Courses
- 39** Healthy Lifestyles Series for Non-Physician Practitioners
- 40** Course Venues

FOLLOW NSU



Dear Colleagues:

We are excited to present our inaugural publication highlighting a portion of our upcoming continuing education (CE) courses. Our CE team has worked hard to present a wide range of interprofessional and traditional discipline-specific courses that are sure to interest you. Visit our electronic course catalog, at [www.nova.edu/healthcare-ce](http://www.nova.edu/healthcare-ce), to view all of our course offerings and specific course information. We will be adding courses throughout the year, so visit our Web site often or sign up for our mailing list to receive monthly updates. Many of the courses have limited space.

To acknowledge your support of lifelong learning, NSU is inviting CE participants to be members of the NSU community. We will assign continuing education participants NSU credentials when they register for courses on our secure online system that provides the convenience of one-time biographical information collection, encrypted payment options, and self-service registration. In addition, we are now offering CE concierge services that include phone registration and assistance with hotel accommodations, regional attractions, and fine dining. Concierge services are available seven days a week, 8:30 a.m. to 7:00 p.m.

On behalf of our team, I want to thank you for your continued support as members of our continuing education family. We hope that our new approach to continuing education programming meets your needs and expectations.

Go Sharks!

Bart Whitehead, D.M.D., M.Ed., M.B.A.  
 Assistant Dean, Professional Development  
 College of Dental Medicine

**Nova Southeastern University  
 College of Dental Medicine (CDM)**

**Dean:** Linda C. Niessen, D.M.D., M.P.H., M.P.P.

**Academic Impressions:** Bart Whitehead, D.M.D., M.Ed., M.B.A., assistant dean, professional development, and executive editor, *Lasting Impressions* magazine; Linnette Dobbs-Fuller, RDH, director, continuing education, and managing editor, *Lasting Impressions* magazine

**Continuing Education Advisory Board:** Anjelica Cardenas, D.M.D.; Brad Engle, D.M.D., M.S.; Brent Fardette; Mark Forest, D.D.S.; Maria Hernandez, D.D.S., Chair; Susan Kass, RDH; Howard Katz, D.D.S.; Sergio Kuttler, D.D.S.; Kenneth Namerow, D.D.S.; Chris Phelps, D.M.D.; Sharon Siegel, D.D.S., M.S.; Joel Slingbaum, D.M.D.

**Office for Professional Development:** Bart Whitehead, D.M.D., M.Ed., M.B.A., assistant dean, professional development; Linnette Dobbs-Fuller, RDH, director, continuing education; Sh'Ceta Lawrence, program coordinator; Sonica Jean Mary, continuing education administrator; Mindy Romer, alumni relations administrator

**Mission Statement:** The mission of the College of Dental Medicine Office for Professional Development—Continuing Education is to promote lifelong learning through quality services and continuing education programs that promote the personal and professional development of our alumni and the health care community-at-large.

**Pictured below, left to right:** Linnette Dobbs-Fuller, Sonica Jean Mary, Linda Niessen, Bart Whitehead, Mindy Romer, Sh'Ceta Lawrence



# THE ROOTS OF DENTAL MEDICINE



Nova Southeastern University, which was formed by the merger of Nova University and Southeastern University of Health Sciences, has been firmly rooted in Broward County for five decades and celebrates its golden anniversary in 2014. The university's unprecedented growth has undoubtedly surpassed the founders' dreams. Today, NSU is home to a 314-acre main campus with nearly 26,000 students and more than 162,000 alumni across the globe.

The College of Dental Medicine is a part of that legacy—and the university's future—sharing in NSU's underlying pride in the success story of how "the little university that could" became the nation's ninth largest, not-for-profit, private, research university.

The College of Dental Medicine (CDM), one of seven colleges in the Health Professions Division, began with the same "can do" spirit as the foundation set forth by the educational pioneers who began NSU. When the CDM admitted its initial class of 75 students in 1997, it was the first private dental college established in the state of Florida, and the first to open in the United States, since 1975.

The College of Dental Medicine continues to expand its borders through dental alumni living throughout the United States. The college recognizes the importance of providing live and on-demand lifelong learning opportunities to engage its alumni, as well as the dental community-at-large, to support the advancement of patient care services and career satisfaction.



## *Did you know?*

Nearly 5 to 10 percent of athletes will experience a concussion in any given sport season.

# Sports Health Care

## Understanding the Basics

This series is an opportunity for sports enthusiasts interested in sports medicine to learn from professionals who practice on and off the field. Nationally renowned sports medicine team members from Miami-area professional and college teams offer their knowledge and experience in this educational and fun series. Participants will learn about sports medicine, tour local professional team stadiums and locker rooms, meet professional sports athletes, and attend sporting events.

Through a module devoted to athletes with disabilities, participants are exposed to the special needs and disability challenges for those individuals who participate in Special Olympics and Paralympics. During that module, participants will participate as volunteers in the Carnival of Champions, the 5K run and carnival for Special Olympians.

With well-rounded and engaging experiences, this series provides participants with an understanding of the basic concepts of sports medicine health care and an appreciation for health care team members' roles. The program also will provide the foundational knowledge to create and implement a community-based sports medicine team. The series is composed of four modules, which can be taken separately, or participants may elect to enroll in three of the four modules and receive an Advanced Continuing Education Certificate in Sports Medicine Health Care.

**Audience members include athletic trainers, dentists, physicians, podiatrists, chiropractors, health care team members, coaches, parents of athletes, and sports enthusiasts.**

## STEERING COMMITTEE

Emilo Canal, D.M.D., Dentist, D.C. United

Steve Dischiavi, M.S., Physical Therapist, Florida Panthers

William Foran, M.S., Head Strength and Conditioning Coach, Miami Heat

Kysha Harriell, Ph.D., Program Director for Athletic Training Program, University of Miami

Lee Kaplan, M.D., Chief of UHealth Sports Medicine Division, University of Miami

Jim Losito, D.P.M., Podiatrist, Miami Heat

Richard Mariani, D.M.D., Dentist, University of Miami

Marty Robins, D.M.D., Dentist, Florida Panthers

Mitch Smith, Ph.D., Sports Psychologist, Florida Atlantic University

Brian Willison, CDT, Training and Research/Development, Great Lakes Orthodontics

David Zenobi, M.S., Head Athletic Trainer, Florida Panthers





## Did you know?

Becoming a certified health coach will provide you with the skills to play a key role in transforming patients' lives by working one-on-one with patients on issues related to their health, nutrition, and lifestyle.



## Health and Wellness

### Health and Wellness—the Gatekeepers to Healthy Lifestyles

The landscape of health care is changing. Dental, medical, optometric, chiropractic, and other health care professionals are taking a more holistic approach to care. This innovative, one-of-a-kind program is designed for health care professionals committed to taking a lead role in transforming the health and wellness of the public by promoting healthy lifestyles and early disease detection through preventive health screenings. Highly regarded physicians will review health maintenance guidelines and provide an evidence-based approach to prevention of disease. At the end of the program, participants will have the knowledge to provide health screenings and increase public awareness of healthy lifestyles. This additional skill set will set participants apart from other individuals in the health care team and bring added value to their positions.

**Audience includes all members of the health care profession.**

### Health Coaching—the Solution to a Growing Need

A health coach motivates clients to transform their lives through a holistic approach that incorporates mind, body, and spirit. Nova Southeastern University offers two options for becoming a certified health coach: Web based and on site. For current health practitioners, NSU's one-and-a-half day, on-site course focuses on the application of knowledge for effective health coaching. For those needing a knowledge-base foundation, NSU has joined forces with the American Council on Exercise (ACE) to offer a Web-based course. Those selecting the Web-based course can participate in the on-site session, at a discounted rate, to hone their skills. Participants who successfully complete the course will hold expertise in motivational interviewing, positive psychology, and effective goal setting that will allow them to accurately address the behaviors that can hold patients back from making long-term change.

Upon completion of either course, participants are eligible to take the ACE Health Coach Certification examination.



# Oral Cancer

## Early Detection and Prevention

Approximately 43,250 Americans will be diagnosed with oral or pharyngeal cancer this year. It will cause more than 8,000 deaths, killing roughly 1 person per hour. Of those newly diagnosed individuals, only slightly more than half—57 percent—will be alive in 5 years. This is a number that has not significantly improved in decades.

Historically, the death rate associated with oral cancer is particularly high, not because it is difficult to discover or diagnose, but because the cancer is routinely discovered late in its development. The preponderance of these tumors represent squamous cell carcinoma of the lips and oral mucous membranes.

This comprehensive course is team taught and includes an overview of the history of the tobacco industry, the multiple appearances of oral cancer and precancerous lesions, adjunctive diagnosis techniques available to aid in early clinical diagnosis, a review of prescribed medications for tobacco cessation, and the power of health coaching and motivational interviewing. This course is a must for all health care providers and the health care team.

**Audience includes all members of the health care profession.**



## Did you know?

Tobacco use is the number one oral cancer risk factor in individuals older than 50. The death rate for oral cancer is higher than that of other cancers, such as cervical cancer and skin cancer.



## *Did you know?*

In the world of cruising, the word *mustering* means an exercise conducted by the crew of a ship prior to embarking on a voyage.



# Alumni and Friends Caribbean Cruise

## A Continuing Education Program You Won't Forget

The College of Dental Medicine Alumni Society has joined forces with NSU colleges and centers to offer a continuing education program that is best described as an educational adventure. The newly renovated *Liberty of the Seas*<sup>®</sup> is packed with all the phenomenal onboard experiences you'd expect from Royal Caribbean's Freedom class of ships, plus new offerings to stir your imagination.

Featured on the cruise is the continuing education program *How to Catch a Killer*. On January 15, 1978, Ted Bundy went into the Chi Omega sorority house at Florida State University. He bludgeoned four students with a club and strangled them. Bundy also sexually assaulted one victim and bit her, leaving clear bite marks. Bundy was captured in February 1978 and eventually went on trial for the murders he committed in the Chi Omega house. The bite mark was the only piece of physical evidence that he left at the scene. Key presenter Richard Souviron, D.D.S., chief forensic odontologist for the Miami-Dade County Medical Examiner Department, will focus on techniques used to identify bite marks versus other puncture wounds and the importance in civil and criminal cases. All this, and NSU special events, makes this continuing education opportunity one you cannot miss!

**Audience members include NSU alumni and friends.**





## Did you know?

Spanish is the primary language spoken at home by 38.3 million people. The number of Spanish speakers is projected to rise through 2020 to anywhere between 39 million and 43 million people.



## Spanish for the Health Care Provider

*Hablar español en este país no es un lujo, sino una necesidad.*

If you don't understand the previous sentence, isn't time you learned Spanish?

Spanish is a historic language with more than 500 million speakers worldwide. It is the second most used language in the United States. NSU's College of Dental Medicine and Farquhar College of Arts and Sciences joined forces to offer this highly beneficial and in demand course.

Taught by an NSU faculty member, this eight-week class, held two hours a week, introduces participants to the basic Spanish-language skills they need to interact with Spanish-speaking patients in a clinical setting. The course focuses on essential medical vocabulary used in the workplace and includes an emphasis on basic Spanish grammar and correct pronunciation. By learning the basics, participants will be equipped to provide the same high standard of health care services to both English and Spanish speakers. Although learning another language can sometimes be time-consuming and frustrating, participants will realize the value of this course the first time they interact with a Spanish-speaking patient. No prior knowledge of Spanish is required.

**Audience includes all members of the health care profession.**



# Lean Six Sigma for Health Care

## Certification Course

In today's health care environment, clinicians and managers must optimize their own organizations. Empirical data has shown that the costs of health care services are inflated by 30–80 percent waste. Health care services have little or no history using data and systematic approaches to process improvement. Moreover, change control and documentation is missing in many health care settings, making it difficult to determine process baselines and to ensure permanence of process improvement.

Lean Six Sigma (LSS) represents a great opportunity for improving quality and speed in the delivery of health care services. One of the tools in LSS thinking is the 5S of the workplace. It helps dental teams to identify areas of inefficient and ineffective delivery, eliminate workspace clutter, and shorten the time for employees to complete the same task. It is also an excellent way to address the new mandates of the National Strategy for Quality Improvement in Health Care that is part of the Affordable Care Act. Upon successful completion, participants will earn either the Yellow or Green Belt in Lean Six Sigma through the Harrington Institute or the Sterling Academy.

The Lean Six Sigma in Health Care course is interactive. It aims to help individuals understand the LSS approach (a combination of Six Sigma and Lean Production) within the context of process and service excellence in health care. Participants will learn numerous methods and tools for waste reduction and process enhancement and acceleration.

**Audience includes all members of the health care profession.**



## Did you know?

One of the tools in Lean Six Sigma thinking is the 5S of the workplace. It is a simple improvement project and can analyze practice problems and identify how existing practice procedures negatively impact delivery.



## *Did you know?*

Nearly 30 percent of a health professional's time is spent dealing with the business, and 35 percent of the day's production should be from front desk collections.

# Executive Practice Management Series

## You've Earned Your Professional Degree, Now What?

You've earned your professional degree and have your state license. There's one last step to accomplish your career dreams—managing and owning your own office. With the advancement of science in health care, the time spent in professional school doesn't adequately prepare students for the business of health care. The delivery of health care is no longer the sole focus of the health professional, and nearly 30 percent of a health professional's time is spent dealing with the business.

Traditional practice management programs continue to focus on business theory, which in today's age of technology isn't applicable. This series focuses on practical business skills that are applicable in daily operations. The series starts with leadership and effective communication, two skills that are essential to a successful and profitable business. Creating a work environment that empowers team members and has efficient, stress-free daily operations requires a thorough understanding of human resources, marketing, patient-centered care, and health coaching. The topic of electronic health records will conclude the series and demonstrate how these electronic systems replace traditional business methods.

## Practice Management Essentials

This one-day course, held once a year in conjunction with an NSU recent-alumni event, provides participants with the basic essentials for a successful practice. Topics such as loan opportunities for practice purchase or new technology, team building, marketing in the age of technology, creating a network for referrals, and boutique practices will be covered. The course features panel discussions and presentations from successful NSU alumni who are currently in practice and representatives from the health and banking industries. Participants will have the opportunity to engage in group discussions and networking opportunities. This is a great time to get input from colleagues and hear about the best ways to create a successful practice. Bring questions with you!

**Audience members include health care providers, front desk staff members, and office managers.**







## Did you know?

In 2012, approximately \$5 million was spent on BoNT-A and derma filler procedures. In select areas of the United States, general dentists may perform botulinum toxin and derma fillers in the oral and maxillofacial areas.



## Botulinum Toxin and Derma Fillers

### **You Have the Skills, You Need the Know-How**

Beauty is skin deep. But, did you know botulinum toxin (BoNT-A) is frequently used for facial pain therapeutics? At one time, the use of botulinum toxins were limited to dermatologists and neurologists. This does not hold true today as primary care physicians, aesthetic nurses, and dentists help to meet the demand for these minimally invasive procedures. Our innovative, interprofessional courses combine lecture and clinical training workshops in cosmetic and therapeutic applications of BoNT-A and dermal fillers. The courses are team taught by a dentist and a board-certified dermatologist. At the end of the course(s), participants will have the tools to incorporate BoNT-A and derma fillers into their practice to enhance cosmetic dentistry results, offer patients the fountain of youth, increase referrals, and create another revenue stream.

For those who prefer one-on-one training or the convenience of in-office training, contact the Office for Professional Development, Continuing Education, and we will be happy to assist you.

**Audience members include dentists, nurse practitioners, physicians, and health care team members.**



## Geriatric Care

### Current Topics in Geriatrics and Eldercare— Create a Referral Network While Learning a Team Approach

This course presents an exciting, interprofessional continuing education opportunity to expand your knowledge of current geriatrics and eldercare topics with colleagues from other health professions, creating a referral network while learning a team approach. This program presents geriatric and eldercare topics that are important in long-term or community settings for patients, with a special focus on interprofessional practice. It reinforces working among other professions and introduces participants to ways to strategize, improve, and coordinate care.

Geriatric patients present multiprofessional challenges to the health care system. They often have a spectrum of medical, functional, and psychosocial problems that involve complex medical and community care. Geriatricians and health care workers in the long-term care setting have always advocated addressing the whole patient and not just the illness. Addressing the whole patient demands a need for many disciplines. One of the challenges is better coordinating care between the professionals. In this course, participants will learn how better coordinated care can improve overall care and lead to decreased hospitalizations and re-hospitalizations.

## Herbal Medicine

### Integrative Medicine—Herbal Medicine

If you have an interest in herbs as medicine and food, and if your schedule prevents you from enrolling in an on-site course, then this online herbal course is exactly what the doctor ordered! This course provides an overview of how foods and herbs work pharmacologically in the body and points out which herbs and foods may have interactions with drugs or conditions. Participants will review body systems from a physiological and biochemical viewpoint and determine which herbs or whole foods may provide nutrients needed to put the body into homeostasis. Participants will learn at their own pace and convenience (and will learn what their great ancestors knew about the natural world).

**Audience members include dentists and dental health care team members.**



### Did you know?

In the United States, 158 million of the adult population use complementary medicines.



## *Did you know?*

What piece of crime scene data is responsible for identifying more than 93 percent of remains?  
Dental records.



# Forensic Science

## The Key to Solving Mysteries

A popular television show, *CSI* (Crime Scene Investigation) is scripted by writers. Now, you have the opportunity to live the real CSI. This series provides a firsthand look at how a forensic medical team collects and evaluates evidence for investigations. The theme of the series emphasizes the study of the practical application of techniques in assisting law enforcement in the identification of humans and conducting criminal investigations. Actual cases will be presented, giving participants a view of techniques, procedures, and strategies a forensic team uses. Renowned forensic professionals, such as medical examiner Cyril Wecht, M.D., J.D., and forensic odontologist Richard Souviron, D.D.S., are presenters in the series. The presentations are intended for an interprofessional audience and encourage open dialogue.

The series consists of three courses and begins with an overview of the forensic medical team and the role each member plays. The second course, *How to Catch a Killer*, is presented on the alumni and friends cruise. To end the series, there is a two-day forum on forensic medicine presented in conjunction with the Cyril Wecht Institute for Forensic Science.

## Cyril Wecht Spotlight

A forensic expert, Cyril Wecht, M.D., J.D., has appeared on national programs discussing medicolegal and forensic issues. He is also the author of *Cause of Death*, *Grave Secrets*, *Who Killed JonBenet Ramsey?*, *Mortal Evidence*, and *Tales from the Morgue*. In 2010, the Allegheny County medical examiner facility was officially designated as the Cyril H. Wecht Institute of Forensic Science.

## Richard Souviron Spotlight

Richard Souviron, D.D.S., serves as the chief forensic odontologist for the Miami-Dade County Medical Examiner Department. He has served as chair of the examining and credentialing committee for the American Board of Forensic Odontology and was president of the American Board of Forensic Odontology. His forensic work and testimony were instrumental in the sentencing of one of the most famous serial killers—Ted Bundy. He and his colleague, William Silver, authored the book *Dental Autopsy*.

**Audience members include dentists, physicians, lawyers, law enforcement officers, psychologists, physicians, health care team members, and anyone with an interest in forensic science.**





## *Did you know?*

Sleep apnea disrupts more than just your good night's sleep and hard day's work. Over time, it's a risk factor for heart attack, stroke, diabetes, and other serious conditions. Approximately 9 percent of women and 24 percent of men are affected by sleep apnea.



## Sleep Apnea Series

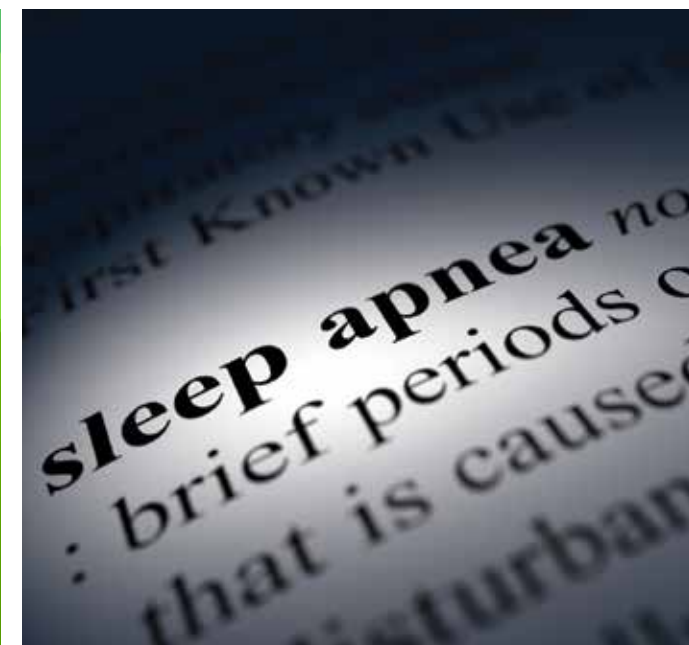
### **Obstructive Sleep Apnea—Be Proactive, Create an Airway: An Interprofessional Collaboration in the Cone Beam Computed Tomography Era**

Creating an airway might seem impossible. In this course, students learn how advances in technology have helped to enable early detection of future airway challenges that can be proactively addressed to create an airway. Imagine addressing an underlying cause of many of the prevalent diseases that we have today, ranging from complicated chronic diseases to simple body functions, such as mouth breathing. With the advances in science and technology, cone beam computed tomography (CBCT) scanners are now finding many uses in the health care fields. This course brings together experts in three health care fields—orthodontics, oral and maxillofacial surgery, and otolaryngology—to discuss the importance of a team approach to obstructive sleep apnea (OSA) and creating adequate airways by evaluating children at an early age for proactive treatment.

### **Sleep Apnea—a Good Night's Sleep**

Sleep apnea is just the beginning. Sleep apnea has been found to be the predecessor to chronic disease, such as high blood pressure and diabetes, and affects behavior and brain function including disrupting the daytime cognitive state. A sleep apnea diagnosis is based on the conjoint evaluation of clinical symptoms, such as excessive daytime sleepiness and fatigue, and the results of a formal sleep study. In this course, regional experts review the scientific evidence associated with sleep apnea and the common treatments. Participants will learn about lifestyle changes, mouthpieces, and breathing devices that can successfully treat sleep apnea.

**Audience members include health care providers, sleep apnea patients, and anyone with an interest in sleep apnea.**



## Course Name

## Course Date

### AUGUST 2014

Fabrication of Provisional Crown and Bridge (2 days) . . . . .	August 16
Local Anesthesia—Review . . . . .	August 16

### SEPTEMBER 2014

Lean Six Sigma for Health Care* . . . . .	September TBA
Digital Dentistry: Evolution—Revolution . . . . .	September 12
Implant: Basic to Advance (2.5 days) . . . . .	September 12
Sports Health Care Series: Understanding the Basics . . . . .	September 19
Basic Life Support for Health Care Provider* . . . . .	September 20
New Initiatives in the Diagnosis and Prevention of Oral Cancer . . . . .	September 20
Basic Airway Management* . . . . .	September 26
¿Hablás Español?: Spanish for Health Care Providers* . . . . .	September 27
Nitrous Oxide-Oxygen Analgesia* (2 days) . . . . .	September 27

### OCTOBER 2014

Recent Graduate Symposium: Practice Management Essentials . . . . .	October 17
Basic Life Support for Health Care Providers* . . . . .	October 18
Dental Radiology . . . . .	October 18
HIPAA Survival Guide . . . . .	October 23
Comprehensive Review Course for Florida Laws and Rules . . . . .	October 24
Health and Wellness Series: The Gatekeepers to a Healthier Society . . . . .	October 24
Record Keeping: Best Practices in Adhering to Florida Law . . . . .	October 25
Forensic Science Series: Introduction . . . . .	October 31

### NOVEMBER 2014

Digital Dentures: Making All Other Dentures Obsolete . . . . .	November 1
Sports Health Care Series: Special Olympics (1.5 days) . . . . .	November 7
Cavitron Training . . . . .	November 14
Expanded Functions for the Dental Health Care Team* (2 days) . . . . .	November 15
Botulinum Toxin: Added Value to Your Patients and Practice* . . . . .	November 21
Derma Fillers: Caulking the Lines of Time . . . . .	November 22
Education Methodology . . . . .	November 22

### DECEMBER 2014

Hard and Soft Tissue Laser Training (2 days) . . . . .	December 5
Crest/Oral B Focused Care Series at NSU: Peri-Implantitis . . . . .	December 12
Operative Procedures Review: Back to the Basics (3 days) . . . . .	December 17
Sports Health Care Series: Heads-Up! Concussions in Sports . . . . .	December 28

### JANUARY 2015

Dental Implant Therapy (continuum) . . . . .	January 14
Health and Wellness: The Gatekeepers to a Healthier Society . . . . .	January 16
Health and Wellness: Health Coaching—Transforming Lives . . . . .	January 17
Dinner Series: Finance 101—Tame Taxes . . . . .	January 22
Practice Management Series: Leading Your Team to Success . . . . .	January 23
Dental Radiology . . . . .	January 24
I-CAT: Orthodontic Treatment Planning . . . . .	January 29
Wilckodontics (2 days) . . . . .	January 30

This does not reflect the entire schedule. For a complete listing and to view the electronic course brochure, visit [www.nova.edu/healthcare-ce.edu](http://www.nova.edu/healthcare-ce.edu).  
 Courses and course dates are subject to change.

## Course Name

## Course Date

### FEBRUARY 2015

Geriatrics Training Institute	February TBA
Alumni and Friends Cruise	February 5–9
Forensic Science Series: To Catch A Killer (cruise)	February 6
Medically Compromised Patients (2 days)	February 13
Fabrication of Provisional Crown and Bridge (1.5 days)	February 14
Dinner Series: Finance 101—Understanding Financial Products	February 19
Crest/Oral B Focused Care Series at NSU: Peri-Implantitis II	February 20
Nitrous Oxide-Oxygen Analgesia*	February 28
Pediatric Advanced Life Support* (1.5 days)	February 28

### MARCH 2015

Practice Management Series: Achieving Success Through People	March 6
Cyril Wecht Institute (1.5 days)	March 12
Forensic Science Series: Tales from the Morgue	March 12
New Initiatives in the Diagnosis and Prevention of Oral Cancer	March 13
Health and Wellness Series: D Squared—Dentistry and Dermatology	March 14
Dinner Series: Finance 101—Creating a Financial Plan	March 19
Dinner Series: Finance 101—Retirement Planning	March 19
I-CAT—An Interprofessional Approach	March 20
Treatment Planning in the Technology Era	March 21
Crest/Oral B Focused Care Series at NSU: Peri-Implantitis III	March 27

### APRIL 2015

Sports Series: Sports Psychology	April 10
Basic Life Support for Health Care Providers	April 11
Sports Series: Sports Mouthguards	April 11
Dinner Series: Finance 101—Adjusting Investments for Retirement	April 16
Practice Management Series: The Business of Health Care	April 17
Dental Radiology	April 18

### MAY 2015

Botulinum Toxin: Added Value to Your Patients and Practice	May 1
Crest/Oral B Focused Care Series at NSU: Peri-Implantitis IV	May 1
Derma Fillers: Caulking the Lines of Time	May 1
Health and Wellness: Health Coaching—Transforming Lives	May 9
HIPAA Survival Guide	May 14
Comprehensive Review Course for Florida Laws and Rules	May 15
Record Keeping: Best Practices in Adhering to Florida Law	May 16

### JUNE 2015

Expanded Functions	June 6
Dental Radiology	June 13
Basic Airway Management*	June 19
Fabrication of Provisional Crown and Bridge (1.5 days)	June 27

### ON DEMAND

Health Coaching	Open
Herbal Medicine	Open

\*Certification/recertification course

Courses in blue represent interprofessional courses.





## *Did you know?*

Research endeavors continue to explore some additional areas that may impact the development and pathogenesis of peri-implantitis, such as rheumatoid arthritis with concomitant connective tissue disease.



## Crest/Oral B Focused Series

### Peri-Implantitis—the New Challenges Ahead

Are you ready for the next challenge in preventive dental care? This series focuses on the recent periodontal condition occurring after implant therapy—peri-implantitis—and the new Crest/Oral B preventive care devices that address this condition. Documented reports suggest peri-implantitis is now a factor of implant disease, and a patient's potential susceptibility for failure is a concern.

Previously, patient compliance in proper implant hygiene was not a consideration in dental implant therapy. However, prior to accepting treatment, clinicians are required to evaluate implant candidates and discuss the need for meticulous hygiene. To complicate hygiene concerns, the cosmetic designs of fixed implant restorations are often difficult for patients to maintain. This series will review the ethical and professional responsibility of selecting a candidate for implant therapy, the use of markers and proper hygiene recall techniques, the best practices in cosmetic design, and the advances in mechanical and chemical innovations that are or will be available. Participants will also have an opportunity to gain practical experience in placing implants on fresh-frozen cadavers.

The series is composed of four sessions. Each session is taught by experts and will be held in South Florida. Whether you are out of state, out of region, or in need of a staycation, this educational and relaxing continuing education series will give you an opportunity to stay at a resort and enjoy all that Fort Lauderdale has to offer. The last course in the series will be held at Miami's Trump National Doral Resort and Golf Club. It is close to the Miami Anatomical Research Center, where participants will gain practical experience in placing implants in fresh-frozen cadavers—which bring a sense of realism that no other course provides. They provide perfect anatomy, normal tissue consistency, and a realistic operative training experience. Participation in three courses of the four-course series qualifies participants for an Advanced Education Certificate in Implant Preventive Care.

**Audience members include the entire dental team.**





## Did you know?

Approximately 1 in every 3 adults has high blood pressure. In the United States, a heart attack occurs every 34 seconds, and each minute someone dies from a heart disease-related event.



## Dental Management of Medically Compromised Patients

Come celebrate with, and learn from, the authors of the *Dental Management of the Medically Compromised Patient* textbook. For more than 30 years, this text has served as the authoritative source for dental management of medically compromised patients. James W. Little, D.M.D., and Donald Falace, D.M.D., will be joined by their co-authors Craig Miller, D.M.D., and Nelson L. Rhodus, D.M.D., in this one-and-a-half day extravaganza of learning along the coast of Florida.

Participants will have the opportunity to meet the authors and hear the latest guidelines and strategies for the delivery of safe dental care, as well as the controversies regarding the interrelationships between dentistry and medicine. Topics include current medical guidelines, accepted medical therapies, controversies in medicine and dentistry, drugs used to treat medical and geriatric conditions, and adverse drug effects and interactions, as well as legal ramifications associated with proper and improper dental management.

**Audience members include dentists and dental health care team members.**



# Dentistry Courses Dermatology Courses

## Dentistry and Dermatology— the Dynamic Duo

Because dental professionals are well educated in head and neck anatomy, as well as full body pathology, they should work closely with dermatologists. They can identify inconsistencies of the head and neck, such as possible skin cancer lesions, and create the best overall results possible for their patients when performing cosmetic dentistry procedures. By identifying inconsistencies of the head and neck, the dental health care team plays a key role in early identification, intervention, and referral.

In addition to pathology referrals, the dental team should be aware of the changes associated with creating new smiles that may be enhanced with cosmetic dermatology procedures. This course is designed to enhance the dental practitioner's knowledge of common skin conditions, treatment options, and common cosmetic dermatology procedures to enhance the results of cosmetic dentistry. Participants will learn how integrating evidence-based dentistry with evidence-based dermatology will result in exceptional results for patients.

## Botulinum Toxin and Derma Fillers

Our innovative, interprofessional courses combine lecture and clinical training workshops in cosmetic and therapeutic applications of BoNT-A and dermal fillers. The courses are team taught by a dentist and a board-certified dermatologist. At the end of the course(s), participants will have the tools to incorporate BoNT-A and derma fillers into their practice to enhance cosmetic dentistry results, offer patients the fountain of youth, increase referrals, and create another revenue stream.

**Audience members include dentists and dental health care team members.**

### *Did you know?*

Because many patients see their dentist more frequently than their medical doctor, dentists are in an advantageous position to reduce the mortality rate of skin cancer, a common malignancy that affects nearly two million people annually.





## Did you know?

The American Association of Oral and Maxillofacial Surgeons found that 69 percent of adults ages 35 to 44 have lost at least 1 permanent tooth to an accident, gum disease, a failed root canal, or tooth decay



# Implantology and Implant Osteotomies Courses

## Implantology Advanced Continuing Education Certificate

More patients are asking for implant therapy. This course provides intensive implant therapy advanced continuing education certificate programs throughout the year, and participants may choose from several start dates. Courses are under the supervision of nationally recognized instructors. The program consists of 8 to 20 sessions (days) and includes classroom learning and clinical experience from placing the implant to restoration.

## David Little, D.D.S., Little Presents Implant Dentistry—Enhancing Diagnosis and Restorative Outcomes Using the Latest Technology

Implant dentistry can enhance the quality of patients' lives. In this course, participants will learn that whether they are replacing a single tooth or an entire edentulous arch, advancements in technology, such as CBCT, planning software, and CAD-CAM, can be used to virtually develop a treatment plan that produces predictable results.

## Implant Surgery 101—the CliffsNotes to Implant Therapy

This course provides an overview of implant therapy for the beginner. General practitioners, as well as those with general surgical experience, will participate in an interactive classroom and training experience to gain a thorough understanding of implant therapy. At the end of the course, participants will have the confidence to incorporate simple implant therapy into their practice.

## Safe and Accurate Implant Osteotomies

In this course, participants will learn to fabricate accurate implant drill guides using root sockets as a scaffold, a splint, and a peri-apical X-ray. Participants will also learn how to use a prefabricated dental splint over an open extraction socket to fabricate an accurate implant drill. The fabricated guides can be used to stabilize and aim the trajectory of an implant drill immediately or at a future date.

## Practical Experience in Placing Implants for the Dental Health Care Team

To understand implant therapy, practitioners need practical experience in the surgical procedures used to place implants. The course provides a continuum of knowledge and highlights the importance of each stage of implant therapy. Participants gain hands-on experience, placing implants in fresh-frozen cadavers, which brings a sense of realism to the course.

**Audience members include dentists and dental health care team members.**





## Did you know?

Changes in Florida laws now require all dentists without anesthesia permits—working with sedated patients and those who would like to—to complete a minimum of four hours of airway management training.



## Nitrous Oxide and Airway Management Courses

### Nitrous Oxide-Oxygen Analgesia—a Practice Builder\*

As a dental professional, you know the patient benefits from administering nitrous oxide, but have you thought about nitrous oxide as a practice builder? An anxious patient who you successfully treat will be your best source for referrals, and many of these new patients will request nitrous oxide. Not only does your patient population grow, so does your revenue. Nitrous oxide used only once per day will increase revenue by approximately \$1,000 a month.

This program is designed to train participants in the administration of nitrous oxide inhalation analgesia, with an emphasis on the integration of oral sedation. The program involves lecture and supervised clinical training. Don't do a disservice to your patients and yourself—register today!

\*This program meets the training requirements of the Florida State Board of Dentistry and most other states having specific anesthesia rules involving sedatives for anxiolytics in conjunction with nitrous oxide inhalation analgesia. This course does not qualify participants for a conscious sedation permit in Florida, which, by definition, includes intravenous sedation.

### Airway Management

Do you provide treatment on sedated patients or are you planning on offering sedation dentistry services? If you answered yes to either of these questions, you need to register for this course.

American Heart Association instructors will provide the necessary training in proper airway management and ventilation for patients experiencing respiratory issues, ensuring compliance with newly established Florida laws. This course is composed of interactive classroom and simulated clinical experiences. This program is unique in terms of the hands-on simulated clinical experience. Participants will apply classroom knowledge using pig heads.

**Audience members include dentists and dental health care team members.**



# Pharmacology Update

## Medications and Dentistry Today

This program will provide participants with a pharmacological update and increase their comfort level with new FDA-approved prescription drugs. Special emphasis will be given to those new drugs with actions, side effects, or interactions with other drugs that may impact dental therapy. Participants will learn about drugs dentists commonly use—such as local anesthetics, antibiotics, and analgesics—and how they work, as well as their clinical advantages and disadvantages, appropriate usage, adverse side effects, and potential drug interactions.

In addition, this course discusses medications patients frequently take, such as cardiovascular drugs, from the perspective of how they work. It also discusses oral manifestations of drugs and how they might impact dental management of the patient in terms of special precautions that need to be taken, potential drug-ratio interactions that might require alteration of standard treatment regimens, and oral side effects. The course format features both lecture and case-based presentations with the intent to instill the importance of staying current in this ever-changing field.

## Endodontic Concepts

### Annual Conference

The Department of Endodontics presents an annual conference which includes research presentations and a nationally recognized clinician, who presents an educational opportunity in best dental practices and emerging treatment concepts for saving the natural dentition. The conference features focused, compelling presentations that highlight comprehensive teaching and integrated treatment planning. Attendees will gain new perspectives and skills to apply to their practice.

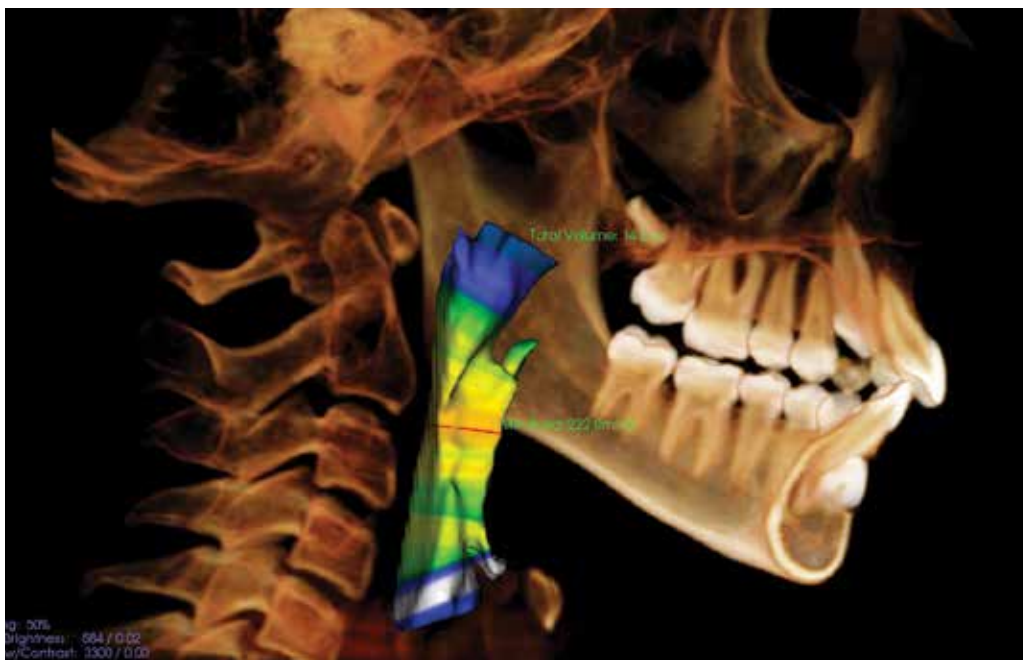
**Audience members include dentists and dental health care team members.**



*Did you know?*

More than 15 million root canals are performed every year.





## Did you know?

CBCT can be used for hard tissues and teeth and offers higher resolution and image sharpness compared to medical CT exams.

# A New Era in Treatment Planning

## Cone-Beam Computed Tomography (CBCT)

Cephalometric analysis (CA) plays an important role in orthodontic diagnosis and treatment planning. Traditional CA is based on three different X-ray projections: latero-lateral telerradiography, postero-anterior telerradiography, and axial projection. However, conventional radiographs only provide a 2-D representation of a 3-D structure, which limits proper orthodontic diagnosis and treatment planning. CBCT is fast becoming more accepted and provides the foundation to a holistic approach to pediatric health care.

With the recent introduction of CBCT, in combination with computer software, the 3-D morphology of the cranial skeletal structures are represented properly. This helps remove the guesswork in identifying where the morphology of a tooth lies in spatial relationship to other structures in the oral cavity. With CBCT, the patient is exposed to similar levels of radiation used during conventional CA and up to 20 times less radiation than what is used during multislice computed tomography (CT) exams.

In addition to its use in orthodontic treatment planning, CBCT is also used with dental implants and in oral and maxillofacial surgery and pathology.

## David Little, D.D.S., Presents Implant Dentistry— Enhancing Diagnosis and Restorative Outcomes Using the Latest Technology

Implant dentistry can enhance the quality of our patients' lives. In this course, participants will learn that whether they are replacing a single tooth or an entire edentulous arch, advancements in technology, such as CBCT, planning software, and CAD-CAM, can be used to virtually develop a treatment plan that produces predictable results.

**Audience members include the dental health care team.**





## Did you know?

Around 700 B.C.E., the Etruscans made dentures from teeth taken from the dead or from teeth that were extracted and sold by live donors. Although the dentures smelled rotten and deteriorated quickly, this practice lasted through the 1800s.



## Aesthetic Dentistry

### Composite Artistry

Ever dream of being an artist? This course focuses on introducing participants to the philosophy of how to conservatively, effectively, and artistically perform aesthetic direct anterior composite restorations by emulating proper form, color, and function. Aspects related to the diagnosis, treatment planning, and execution of such restorations are thoroughly addressed. Participants will learn a step-by-step procedural approach to solving day-to-day direct anterior composite restorative challenges, which include shade selection, color mapping, color mock-up, tooth preparation, composite resin selection, and artistic implementation.

**Audience members include dentist and dental health care team members.**

### Can Digital Dentures Replace Conventional Dentures?

In modern health care, new digital technologies are being continually introduced that assist the practitioner in the diagnosis and treatment of patients. In dentistry, digital dentures are a recent addition to the options that can be provided to edentulous patients. Recently, digital denture advertisements can be found in email inboxes, and television health segments feature patients and dentists discussing the benefits of digital dentures. Your own patients may have questioned you about digital dentures.

As with any newly introduced computer-based procedure, there is a lot of promise only as long as the dentist understands the proper utilization of the new technology. Dental educators and practitioners are left asking themselves whether digital dentures can replace conventional dentures. This course will illustrate to participants the clinical procedures and outcomes of digital dentures and compare them with the dentures fabricated through conventional procedures. At the end of the course, participants will be equipped with the knowledge they need to make an informed decision about whether digital dentures would be a positive additional treatment option for edentulous patients in their practice.



# Accelerated Osteogenic Orthodontics™

## How Long Until My Braces Come Off?

If you have a prominent orthodontic or periodontal practice or would like to cultivate one, take advantage of what the Wilckodontics® System has to offer you and your patients. More than four years of research has culminated in the development of a new procedure by which teeth can be moved approximately four times faster than ever before possible with conventional orthodontics. As a result, the treatment time for most orthodontic cases can be reduced to three to eight months. In addition, there is also a significant reduction in the number of adjustment appointments. The drastic reduction in treatment time and adjustments also translates to fewer problems, such as appliance breakage.

In the past, corticotomies have been performed with the intent of inducing block movement to accelerate orthodontic movement. Although belief in segmental movement can play a significant role, it was generally de-emphasized in favor of regional accelerated phenomenon (RAP). So as not to be limited by an alveolus that is insufficient in size or incorrect in shape, a form of alveolar augmentation was incorporated into the process. The amalgamation of these philosophies has resulted in a new orthodontic treatment name, the Accelerated Osteogenic Orthodontics™ (AOO) procedure.

This course is a dual specialty program, providing the periodontist, oral maxillofacial surgeon, and orthodontist with the Wilckodontics® certification and licensure. This technique-driven course will provide participants with the knowledge needed to perform this innovative surgical procedure, in conjunction with the appropriate orthodontic diagnosis and treatment.

**Audience members include periodontists, oral maxillofacial surgeons, and orthodontists.**

## Did you know?

To date, most major advances in orthodontics have been mechanical in nature. With the Wilckodontics® System, most adolescent and adult cases can be completed in a quarter of the time needed for conventional orthodontics.





## Did you know?

Implementing new technology will create a greater return on investment in the long term. New technologies cut down patient office time by 50 percent, increase patient safety, and make the dental process more comfortable.



# Technology

## Dentistry in the Age of Technology: Evolution to Revolution

Considering getting into the digital dental world but not sure how to begin? This course is designed for you!

Find out what is new, what kind of equipment and skills are needed, and how responsibilities are divided among the dental health care team. In the last decade, technology in telecommunications, patient records, and imaging have evolved and integrated with great speed, causing a revolution in many industries including dentistry. There is a new workflow and the manufacturing process has changed from artisanal to industrial with some labs working 24/7.

It is a challenging time, especially for those who did not grow up with all this technology but still want to practice dentistry. The learning curve and the investment in new technology make us doubt the need for change, since we can still provide care the old way with predictable results. However, as with most innovations, sooner or later we will have to use them. Participants in this course will discover how this new digital revolution can benefit their practices.

This course is also provided in Spanish.

**Audience members include the dental health care team.**

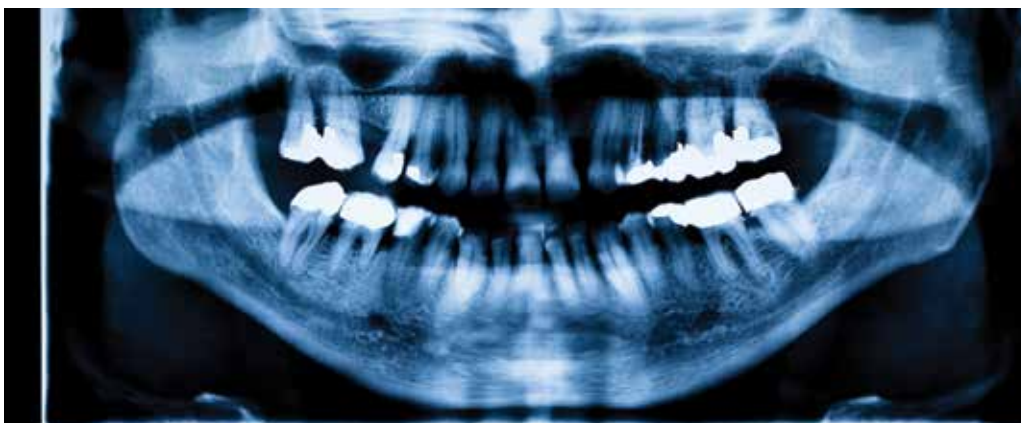
## Hard and Soft Tissue Lasers

Has the hoopla surrounding the introduction of lasers to dentistry been more smoke than substance? Since 1990, the U.S. Food and Drug Administration has approved the use of seven different wavelengths for dental use. These different wavelengths create a world of difference in how the lasers operate and their usefulness.

In this course, the use of lasers for specific procedures found in everyday general practice will be highlighted, with each participant provided a hands-on experience with the various wavelengths. Participants will also have the opportunity to perform surgical procedures on in vitro models. Real-time videos of routine laser procedures will be part of the in-depth discussion of specific instrument settings and techniques for laser surgical procedures. Subject areas that will be discussed include the following:

- aesthetic and cosmetic dentistry
- endodontics
- fixed and removable prosthetics
- nonsurgical, surgical, and regenerative periodontal therapy
- oral medicine, surgery, and pathology
- pediatric and adolescent operative dentistry
- pedodontics and orthodontics
- practice management and marketing
- surgical and restorative implantology





2/27/12 68.0kV 10.0mA 18.0s 141.5mGy×cm<sup>2</sup>



## *Did you know?*

The future for dental hygienists looks bright. The U.S. Bureau of Labor Statistics predicts that employment in this field will grow much faster than the average for all occupations through 2020.

# Dental Health Care Team Courses

## Local Anesthetic for the Dental Hygienist

This annual course provides dental hygienists with a review of the essential skills and knowledge necessary to safely and effectively administer local anesthesia.

## Nitrous Oxide-Oxygen Analgesia—It's Not Something to Laugh About

Be an integral member of the dental health care team—become trained in nitrous oxide-oxygen analgesia and assist anxious patients to have a positive experience at the dental office. This course is designed to train participants in the administration of nitrous oxide inhalation analgesia, with an emphasis on the integration of oral sedation. With successful completion of the course, participants will stand out among their dental health care team members.

## Dental Radiography Certification

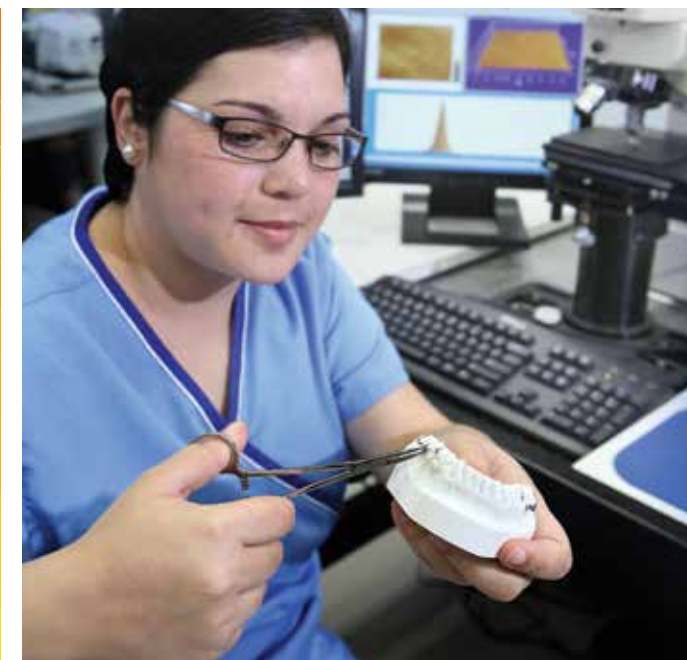
Learn dental radiographic principles and practices that are necessary for certification, while networking with dental health care team members from across Florida. In a team taught by university professors committed to dental education, this course provides participants with the knowledge and practical hands-on experience in dental radiography necessary for certification currently required by Florida law. This course is also provided in Spanish.

## Expanded Functions as Permitted by Florida Law

Ready to go the next step? In this course, participants will learn additional procedural skills that the dental health care team can provide to patients. By knowing these skills, participants can be actively involved in patient care and provide added value to their employers. This team-taught course provides participants with the knowledge and practical hands-on experience they need to confidently perform expanded functions on a daily basis.

## Fabrication of Provisional Crowns and Bridges

If you are tired of the routine duties of your workday, you will want to register for this course. It is designed for individuals who have an interest in learning the art of fabricating provisional crowns and bridges, as well as those who would like refresher training. This practical hands-on course provides the techniques required to fabricate functional and cosmetic-pleasing provisional materials that dentists and patients will praise. University professors teach this course and share their experience and tips for fabricating temporary crowns.







## *Did you know?*

The National Commission for Certifying Agencies—the same body that accredits certifications for pharmacists, nurse practitioners, and many other health professions—has accredited only one health coach certification, the ACE Health Coach Certification.



# Healthy Lifestyles Series for Non-Physician Practitioners

## Health and Wellness—the Gatekeepers to Healthy Lifestyles

The landscape of health care is changing. Over the years, health care professions have evolved from a narrow scope, defined by the boundaries of the specific discipline, to one of comprehensive proportions. Today, dental, medical, optometric, chiropractic, and other health care professionals are taking a more holistic approach to care. This one-of-a-kind program is designed for non-physician practitioners and health care team members who are committed to taking a lead role in transforming the health and wellness of the public by offering health screenings to promote healthy lifestyles. Highly regarded physicians will review health-screening guidelines and provide an evidence-based approach to prevention of disease. Participants will finish the program with an understanding of the importance of health screenings and will be trained on a new, cost-effective health-screening device that they can use in their practice to increase awareness of healthy lifestyles and office revenue.

## Health Coaching—the Solution to a Growing Need

People struggle to adopt the lifestyles they need to fend off preventable disease, live longer lives, and spend less on health care. They are living in a vicious cycle of temporary change fueled by quick-fix solutions. As a result, many of their achievements are short lived. This course produces professionals who can help people end that vicious cycle.

A health coach motivates clients to transform their lives through a holistic approach that incorporates mind, body, and spirit. Nova Southeastern University offers two options for becoming a certified health coach: Web based and on site. For current health practitioners, NSU's one-and-a-half day, on-site course focuses on the dynamics of effective health coaching. For those needing a knowledge-base foundation, NSU has joined forces with the American Council on Exercise (ACE) to offer a Web-based course. Participants who successfully complete the course will hold expertise in motivational interviewing, positive psychology, and effective goal setting that will allow them to accurately address the behaviors that can hold patients back from making long-term change.

Upon completion of either course, participants are eligible to take the ACE Health Coach Certification examination.

**Audience members include non-physician health care providers and health care team members.**





## Did you know?

Our concierge services can assist you with hotel accommodations, transportation, restaurant recommendations, and social activities.

## Sun, Sand, and Surf— Who says continuing education can't be fun?

Our dedicated team takes great pride in meeting your needs and expectations in delivering a high quality of customer service and value. To complement our course offerings, we have identified top-notch venues that will enhance your overall experience as a member of the NSU alumni and friends community.

Thank you for your continued support!

# The More You Learn, The More You Earn,

For every three paid, live continuing education courses, you receive one FREE course!

Help fund student scholarships by reviewing our offerings for courses that designate \$20 of tuition to the College of Dental Medicine's Endowed Student Scholarship.

For your convenience, we now offer online registration that features

- a detailed and up-to-date course brochure
- a secure, one-time registration form
- encryption of personal information
- the ability to add or drop courses at any time

For more information and to register, visit our Web site at

[www.nova.edu/healthcare-ce](http://www.nova.edu/healthcare-ce).



**College of Dental Medicine • Continuing Education**  
**[www.nova.edu/healthcare-ce](http://www.nova.edu/healthcare-ce)**