



# Quarantine Pests

## Commonly Found in Shipments from Hawaii

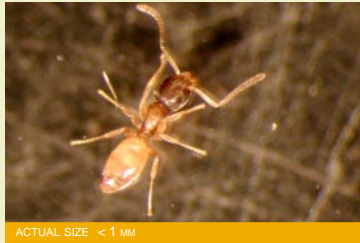
Presence of the insects and related organisms shown below will result in rejection of plant shipments from Hawaii to the U.S. mainland.



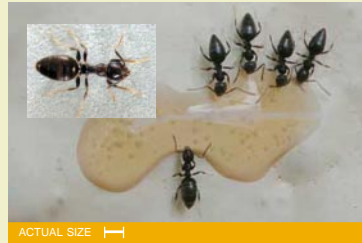
**longlegged ant**  
*Anoplolepis gracilipes*



**bigheaded ant**  
*Pheidole megacephala*



**tiny yellow house ant**  
*Tapinoma melanocephalum*



**whitefooted ant**  
*Technomyrmex albipes*



**little fire ant**  
*Wasmannia auropunctata*



**green scale**  
*Coccus viridis*



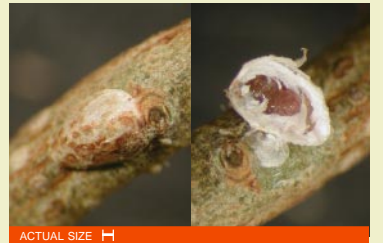
**nigra scale**  
*Parasaissetia nigra*



**hemispherical scale**  
*Saissetia coffeae*



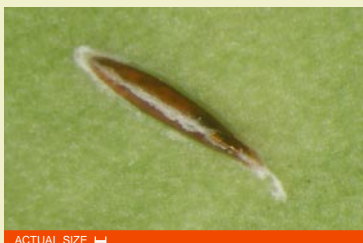
**coconut scale**  
*Aspidiotus destructor*



**mining scale**  
*Howardia biclavis*



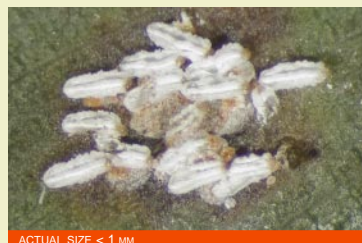
**black thread scale**  
*Ichnaspis longirostris*



**an armored scale**  
*Lopholeucaspis cockerelli*



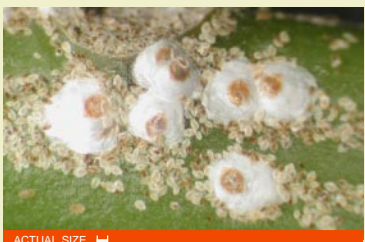
**ti scale**  
*Pinnaspis buxi*



**hibiscus scale**  
*Pinnaspis strachani*



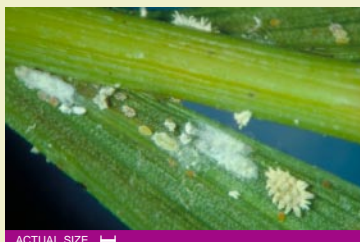
**magnolia white scale**  
*Pseudaulacaspis cockerelli*



**white peach scale**  
*Pseudaulacaspis pentagona*



**pink pineapple mealybug**  
*Dysmicoccus brevipes*



**coconut mealybug**  
*Nipaecoccus nipae*



**palm mealybug**  
*Palmicultor palmarum*



**longtailed mealybug**  
*Pseudococcus longispinus*



**rhizocelus root mealybug**  
*Rhizocelus hibisci*



**pink hibiscus mealybug**  
*Maconellicoccus hirsutus*



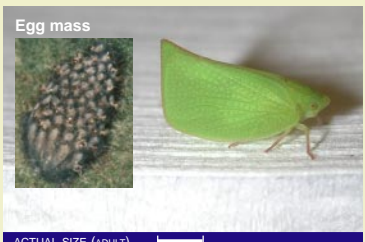
**southern garden leafhopper**  
*Empoasca solana*



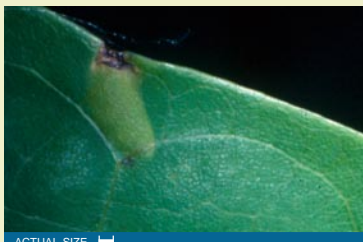
**a planthopper**  
*Kallitaxila granulata*



**twospotted leafhopper**  
*Sophonia rufofascia*



**torpedo bug**  
*Siphanta acuta*



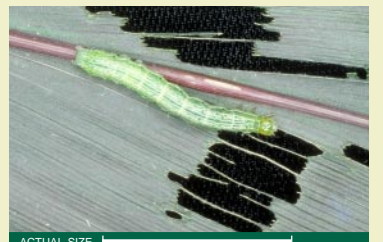
**a katydid egg in a leaf**



**spiraling whitefly**  
*Aleurodicus dispersus*



**anthurium whitefly**  
*Aleurotulus anthuricola*



**green garden looper**  
*Chrysodexis eriosoma*



**a slug**  
*Deroceras species*



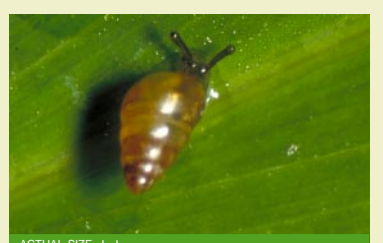
**a slug**  
*Meghimatium striatum*



**brown slug**  
*Vaginulus plebeius*



**two-striped slug**  
*Veronicella cubensis*



**a native snail**  
*Tornatellides species*

S. Chun, R. Niino-DuPonte, A.H. Hara, and C. Jacobsen  
Department of Plant and Environmental Protection Sciences

Except for the slugs and the green garden looper, images in this poster represent what can be seen with a 10–14X hand lens. Photos by S. Chun, A.H. Hara, W. Nagamine, R.F.L. Mau, B.C. Bushe, V.L. Tenbrink, T.Y. Hata, P. Conant, and R. Heu; white-footed ants by R.H. Scheffrahn, Univ. of Florida; southern garden leafhopper from Dept. of Entomology, Texas A&M University.



**Cooperative Extension Service**  
College of Tropical Agriculture and Human Resources  
University of Hawai'i at Mānoa

CTAHR publication IP-18, June 2004

Published by the College of Tropical Agriculture and Human Resources (CTAHR) and issued in furtherance of Cooperative Extension work, Acts of May 8 and June 30, 1914, in cooperation with the U.S. Department of Agriculture. Andrew G. Hashimoto, Director/Dean, Cooperative Extension Service/CTAHR, University of Hawaii at Manoa, Honolulu, Hawaii 96822. An Equal Opportunity / Affirmative Action Institution providing programs and services to the people of Hawaii without regard to race, sex, age, religion, color, national origin, ancestry, disability, marital status, arrest and court record, sexual orientation, or veteran status. CTAHR publications can be found on the Web site <http://www.ctahr.hawaii.edu> or ordered by calling 808-956-7046 or sending e-mail to ctahrpub@hawaii.edu.