



Optimization of customer orders routing in a collaborative distribution network

Fabien Lehuédé, Olivier Péton, Xin Tang

► To cite this version:

Fabien Lehuédé, Olivier Péton, Xin Tang. Optimization of customer orders routing in a collaborative distribution network. Rapport interne 14-6-AUTO. 2014. <hal-01088626>

HAL Id: hal-01088626

<https://hal-mines-nantes.archives-ouvertes.fr/hal-01088626>

Submitted on 28 Nov 2014

HAL is a multi-disciplinary open access archive for the deposit and dissemination of scientific research documents, whether they are published or not. The documents may come from teaching and research institutions in France or abroad, or from public or private research centers.

L'archive ouverte pluridisciplinaire **HAL**, est destinée au dépôt et à la diffusion de documents scientifiques de niveau recherche, publiés ou non, émanant des établissements d'enseignement et de recherche français ou étrangers, des laboratoires publics ou privés.

Optimization of customer orders routing in a collaborative distribution network

École des Mines de Nantes
Rapport Interne 14/6/AUTO
october 2014

Fabien Lehuédé, Olivier Péton, Xin Tang

École des Mines de Nantes, IRCCyN (UMR CNRS 6597)
4 rue Alfred Kastler, 44300 Nantes, France Tel.: +33-251-858-321
Fax: +33-251-858-349 fabien.lehuede, olivier.peton, xin.tang@mines-nantes.fr

Abstract

This paper presents a sequential approach for the assessment of a multi-layered distribution network from a cluster of collaborating suppliers to a large set of customers. The transportation network includes three segments: suppliers routes from suppliers to a consolidation and distribution center, full truckload routes toward regional distribution centers, and less-than-truckload distribution toward final customers. In every shipping date, the optimization problem consists of assigning customers to regional distribution centers and determining the routes of vehicles through the whole distribution network. This problem is first modeled as a Mixed Integer Linear Problem (MILP). Then, we propose to decompose it into three smaller MILPs that are solved sequentially in order to quickly provide a good approximate solution. The experiments on real data show that the decomposition method provides near optimal solutions within a few minutes while the original model would require hours of calculation.

Keywords: Horizontal collaboration, mixed integer linear programming, distribution network design, load plan

1 Introduction

Horizontal collaboration in a supply chain is characterized by a pooling of resources between manufacturers rather than manufacturers collaborating with logistics service providers or 4PLs (vertical collaboration) [15]. Companies which resort to horizontal collaboration have to overcome many cultural, organizational and technical barriers, among which the fear for information disclosure, the difficulty to establish relationships of trust, the need for new IT tools or legal aspects. Competing companies are often reluctant to share strategic internal resources. External operations such as the supply or distribution of goods are often natural candidates for horizontal collaboration. They

can be easily outsourced and shared with other manufacturers, including competing companies.

Pooling the transportation of goods represents a cost reduction opportunity in two ways. Firstly, Less-Than-Truckload (LTL) shipments of each collaborating company can be consolidated into Full TruckLoad (FTL) shipments, which turns out to be much cheaper. Secondly, whenever FTL shipments are not possible, the cost of LTL consolidated shipments is cheaper than small-sized separated shipments, due to economies of scale. From the organizational point of view, collaborative logistics is also a mean to sign long-term partnership agreements with a few reliable Logistic Service Providers (LSP) and to guarantee a regular service, rather than looking for one-shot transportations everyday with multiple carriers. Finally, from the customers point of view, common deliveries instead of several small volume deliveries improve the quality of service.

However, horizontal collaboration comes at various costs and impediments [10]. The first obvious difficulty is the need to synchronize the material flows in order to organize common deliveries. This requires organizing pickup routes between the collaborating companies or to create a shared consolidation center. This new facility induces additional logistics costs and break bulk which did not exist before. In practice, it is very hard to estimate a priori if the cost of collaboration is compensated by the resulting cost reduction. Thus, only non negligible savings are worth the increased system complexity.

In this paper, we consider a cluster of companies which aim at establishing horizontal collaboration for the delivery of their goods from one production region to a set of customers spread across a wide area. The main objective of this collaboration is to build pooled load plans that cut expenditure on the distribution costs through volume consolidation. The second objective is to improve the quality of service to customers by synchronizing the deliveries.

A global objective of the paper is to assess a collaborative logistic network composed of one consolidation and distribution center (CDC) and several regional distribution centers (RDC). In particular, one has to check whether a grand coalition, *i.e.* a coalition involving all players, is viable from an economic point of view. For confidentiality reasons, we cannot provide numerical results concerning the quantitative benefits of collaborative distribution and the cost allocation mechanism. We rather focus on the modeling of the distribution optimization in the collaborative network and the decomposition of the original model into three subproblems.

The contribution of this paper is two-fold. We propose a mixed integer linear programming (MILP) modeling for a rich horizontal collaboration case which includes several layers of facilities, multiple transportation segments and structure costs. Minimizing the cost of daily load plans is difficult due to the variety of all possible material flows through the logistics network and the simultaneous use of FTL and LTL routes with different cost structures. Since the global MILP model is intractable in practice, we propose a decomposition approach which defines three independent subproblems which are solved sequentially. This approach is tested on a real-life case study with 7 suppliers and more than 5000 customers. A computational study evaluate the performance of the decomposition approach. We show that this approach solves large instances almost

optimally with a drastic time reduction. Since the collaborative routing problem must be solved everyday with different customer orders, this time reduction is a key issue.

The remainder of the paper is organized as follows. In Section 2, we detail the main settings of the considered optimization problem. Section 3 reviews relevant literature and helps positioning the current study in the abundant literature about collaborative transportation systems. The formal description of the MIP model is introduced in Section 4. Section 5 presents our decomposition approach into three main sub-problems. The numerical experiments on a real-life case study are presented in Section 6. Finally, we make concluding remarks in Section 7.

2 Problem settings

2.1 Independent deliveries

Before introducing the collaborative distribution network, let us first describe a non-collaborative case in which several suppliers deliver goods through independent distribution systems. Figure 1 represents such a system with four suppliers and their respective customers.

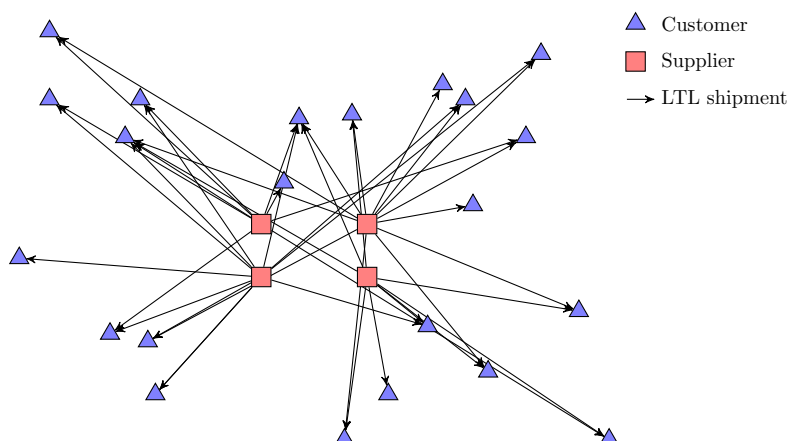


Figure 1: A non-collaborative distribution network

Although the figure represents the itineraries by direct arcs between the suppliers and their customers, the suppliers do not control the actual itinerary of their products. LSPs generally resort to their own logistics network. In this case, long-haul shipments are generally sent to a break-bulk terminal where they are consolidated with freight from other sources [13]. The exact itinerary of trucks, possible consolidation with other shipments and the number of cross-dock operations are not communicated to suppliers. Moreover, customers who order to more than one supplier, or neighboring customers who order to a common supplier are likely to be delivered by a common truck. Although shipments are frequently consolidated, they are charged separately to each supplier.

2.2 The collaborative network

Pooling the distribution enables the suppliers to benefit from economies of scale when goods are gathered in common vehicles. In many collaborative distribution projects, manufacturers consolidate their respective shipments into a single warehouse operated by an LSP which uses its own logistics network to reach the customers. Thus, the scope of collaboration is limited to the upper layer of the distribution network. The shippers generally still ignore the real itinerary of their shipments.

In this paper, we consider an economic sector in which the product distribution is free of charge for the customers. Thus, the collaborating companies want to maintain control of the distribution process and costs. In particular, they want to use only a few predefined distribution centers between their gates and the customers. This requirement is especially relevant if the product can be damaged by logistic operations. Figure 2 represents the multi-layered logistics network considered in our study. It is composed of four types of facilities:

- a set of *suppliers*: collaborating production centers which are the sources of all material flows,
- one consolidation and distribution center (CDC) which acts as the main collaborative warehouse at the suppliers gate,
- a set of regional distribution centers (RDC) which are end-of-line facilities in the collaborative network,
- a large set of customers who are the destinations of all product flows.

The capacity of the CDC and the RDCs is considered to be non-binding since there is only temporary storage.

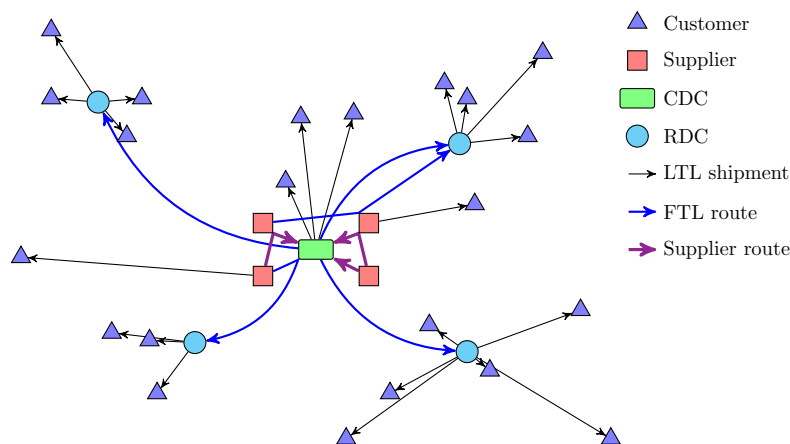


Figure 2: The collaborative distribution network

2.3 Supplier routes, FTL routes and LTL shipments

As shown in Figure 2, customer orders are consolidated and delivered to the customers through a sequence of three successive transportation segments called supplier routes, FTL routes and LTL shipments.

2.3.1 Supplier routes

Consolidation of shipments at the CDC requires local routes between the suppliers and the CDC. We call these routes *supplier routes*. Supplier routes pick up products from one or several suppliers and deliver them to the CDC. Since the number of collaborating companies is generally small, the potential number of supplier routes can be easily enumerated. Moreover, supplier routes which are too long, raise scheduling incompatibilities or contain too many stops can be automatically discarded.

If the suppliers form a geographical cluster, the length of a supplier route is short (in our case between 5km to 80km). The cost of supplier routes is then mainly determined by fixed costs related to the driver, the vehicle and stopover costs at any intermediate stops (see e.g. [20] and [29]). In particular, we assume that it is independent of the number of units transported.

2.3.2 Full truckload routes

The use of FTL routes implicitly assumes that enough shipment have been consolidated, making it possible to fill a full truckload vehicle and send it to an RDC. FTL routes can start at the CDC or at a supplier and go directly to an RDC. Adding a pick up at an intermediate supplier or the CDC is also admitted, but this raises an additional stopover cost. In practice, many carriers will not accept routes with too much out-of-route distance [6], so that the set of potential FTL routes can be easily enumerated.

Each FTL route can be decomposed into a *pickup leg*, which is the part of the route where trucks are loaded (in the production area) and a *long-haul leg* between the last pickup point and an RDC.

The cost of the long-haul leg of an FTL route is assumed constant and known in advance. At least it can be approximated with good precision from previous experience of the companies.

The cost of a pickup leg is the sum of a cost proportional to the distance traveled and a constant stopover cost for each location visited after the starting point. Since all pickup legs can be easily enumerated, the mathematical model considers the set of all pickup legs, each one having a given known cost.

2.3.3 Less-than-truckload shipments

LTL shipments concern the distribution to final customers. These shipments are operated by local transport companies. In practice, the distribution to final customers can be consolidated with goods supplied by other companies. The itineraries are designed

by the local operators and not controlled by the collaborating suppliers. This is why it is called *LTL shipment*.

We assume that all customer order are less-than-truckload quantities. In real life, there exist some exceptional orders which exceed one truckload. These orders are shipped directly from the supplier to the customer and are not considered here. There can also be some special operations that cannot be pooled with other orders. These orders are not considered by the present study.

We impose a single sourcing constraint: each customer is delivered from only one source, which can be a supplier, the CDC or an RDC. This prevents multiple deliveries of some customers on the same day and thus increases the quality of service. Note that from one day to another, one customer can be assigned to distinct distribution centers. This enables some flexibility by distributing the workload between the whole set of facilities.

LTL shipments are delivered by vehicles which exact itinerary is unknown. As explained in [21], the cost of an LTL shipment depends on the service provided by the local carrier and not on the usage of its resources. The cost increases non linearly with the number of units transported and incorporates discount rates, as represented in Figure 3.

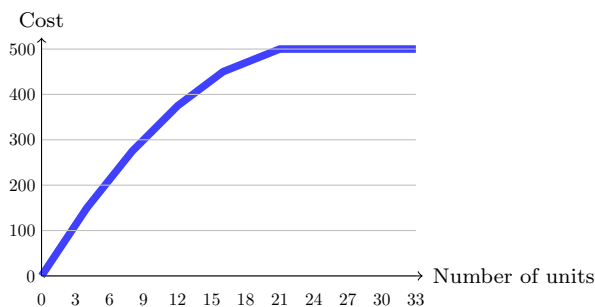


Figure 3: Cost of an LTL shipment

Note that the cost of all LTL shipments are charged independently of each others, even if the customer orders are delivered by the same vehicle. We assume that this cost already integrate the possible handling costs at the RDC.

2.4 The collaborative load plan design problem (CLPDP)

The optimization problem at hand consists of assigning each customer order to one RDC, the CDC or a supplier and designing itineraries for all customer orders through the network. The objective function is to minimize the sum of transportation and handling costs. Since the CDC and the RDCs are used only as cross-docking facilities, there is no inventory cost.

Reduction of transportation costs can also be achieved through time aggregation. For example, if two suppliers send goods to a common customer on Mondays and Tuesdays respectively, there is no possible pooling of these orders. When a short-term storage is

possible, time consolidation is possible. This idea is exploited by [30] in a case where transportation costs depend on the time. The suppliers send one shipment containing all customer orders to a unique consolidation center, which stores the goods and sorts them by destination. This results in a non-linear optimization problem solved with a Lagrangean-based dual solution method.

We assume that the whole set of customer orders is partitioned into independent shipping dates. Volunteer postponement of the shipping in order to consolidate two successive orders is not authorized. However, the customers are driven to place regrouped orders. During the high season, the customer orders are frequent and larger. This reinforces the opportunity for shipping in FTL routes. During the low season, the customer orders are less frequent and generally concern very small shipments. The potential for FTL shipping is almost null, but large savings can be achieved if customers place regrouped orders.

Within each shipping date, the customers are delivered exactly once. Hence, shipping dates allow defining independent instances of the same optimization problem called Collaborative Load Plan Design Problem (**CLPDP**). An MILP model for the (**CLPDP**) is presented in section 4.

3 Related research

Strategic collaboration between stakeholders of an existing supply chain has been studied by numerous authors. Among the multiple facets of collaborative distribution, the scope of the present paper is restricted to the optimization of logistics operations once all preliminary hurdles have been passed. In particular, our study concerns the optimization of the daily distribution operations in a predefined collaborative logistics network. We assume that strategic facility location decisions have met in a preliminary step and cannot be modified. The following subsections review some relevant research related to our work.

3.1 Horizontal cooperation among suppliers

The idea of consolidating customer orders has been existing for a long time, especially in the maritime and airline industry [2, 32]. As pointed out in [24] and [34], horizontal cooperation among carriers has been more studied than cooperation among shippers. See for example [22], [33] or [35].

Every large manufacturer with several production centers close enough to each others and customers scattered around a large geographical area faces the decision to consolidate its shipments. Such a company is described in [6], with a primary goal of saving sales reps time through improvement of the information system and a secondary goal of saving some transportation cost.

Most research about horizontal collaboration focuses on the strategic level, with a main concern of designing the supply chain network. In these model, typical binary decisions concern the location of pooled facilities. Continuous or integer decisions con-

cern the flow of material between facilities. Economic models often come along with the reduction of greenhouse gas emissions and the use of inter-modal transportation. For example, the effect of pooling the supply chains of two major French retailer chains, with the aim of reducing CO_2 emissions from freight transport is explored in [28]. This study yields a relative reduction of CO_2 emissions of 14% exclusively with road transport and 52% when combining of road and rail. A collaborative many-to-many collaborative hub network in the Netherlands is studied in [16]. The shipments through the hub network uses inland navigation by barges. One common point with our study is that customer's demand may be split into a fraction using the hub network (or CDC) and another fraction which is shipped directly by companies. A reduction of average logistics costs of 14% is reported for freight using the hub network.

Two applications in the area of automotive industry in Europe are presented in [24]. The first application concerns distribution from 7 automotive companies of Romania to a set of destinations all over Europe. The authors propose two scenarios with inter-modal transportation: train + direct delivery by truck or train + transport bundling. The cost reduction is by 14%. The second application concerns the distribution from suppliers in Eastern Spain to Saxony. LTL demands are first consolidated before being carried to Germany. This yields a cost reduction by 15% and a fuel consumption and CO_2 emissions reduction by 17%.

Freight consolidation between small companies which generally ship less than truck-load quantities is also studied in [34]. They consider stochastic arrival of suppliers orders and create *ad hoc* freight consolidation on each route and each time period. They show that coalition outperforms the myopic approach especially when the arrival rate is low. They observe that “for small shippers to obtain savings, the origin and the destination of the shipment must be in relatively close proximity.”

In *factory gate pricing* (FGP) the products are collected by the retailer at the gates of the suppliers. Seven FGP scenarios are studied in [5], in the area of slow moving dry grocery goods. The use of a consolidation hub between suppliers and synchronization efforts can save up to 26% of the logistics costs. As further research, the authors indicate the possibility of bypassing the retailers distribution centers, optimizing the location of the consolidation hub and dealing with seasonal variations.

3.2 Service network design

The collaborative load plan design problem is related to service network design [8]. One key issue in this domain is to plan the service of a fleet of vehicles and the routing of orders from origins to end-of-line terminals through transshipment centers. This problem often uses several modes of transport. This problem is also called load plan design and has been receiving a lot of attention from the OR community in recent years [3, 9, 12, 13]. This research aims at minimizing LTL freight transportation carrier costs. It mostly concerns transport on very large territories where one trip from a transshipment center to another may take more than one day and the management of assets as well as delay considerations are major issues. The construction of routes with several pickup points is not considered in these applications.

Lindsey et al. [25] consider the problem of transporting products from suppliers to distribution centers using LTL and FTL services in the retail industry. To our knowledge, this work is the only one to consider the design of subcontracted FTL routes with multiple shipment origins and destinations. The problem uses a path based formulation. Restrictions of this problem are solved sequentially and find solutions to large instances within 4h of run-time.

Krajewska and Kopfer [21] define the integrated transportation planning problem (ITPP) as the problem of constructing a load fulfillment plan, assuming a fixed limited size of the owned fleet and predefined types of LTL external carriers. Splitting of customer orders is not allowed.

3.3 Modeling the transportation costs

One of the main incentives for horizontal collaboration is the cost structure charged by the carriers for LTL shipments. As detailed in [36], this cost depends on both tangible and intangible factors. Examples of intangible factors are the degree of competition on the local markets, the desirability of the shipment or the negotiation power of the shipper. It can be also influenced by inevitable empty truck repositioning [14].

One classical approach is to consider a cost structure with incremental discounts, leading to a concave function which can be approximated by a piecewise linear function, as shown in Figure 3. This approximation is practical for optimization purposes but sometimes not realistic. The Modified All-Unit Discount (MAUD) cost structure is based on weight intervals on which decreasing prices are incurred [27]. For example, shipments with less than 30kg are charged \$ 30/kg and shipments with more than 45 kg are charged \$ 20 / kg. This leads to a non-continuous piecewise affine cost curve with breakpoints. In order to avoid breakpoints and keep the price curve monotonously non-decreasing, the whole interval [30,45] is charged as 45kg for \$ 20/kg. Example of MAUD cost structures can be found in [17] or [36] in the context of LTL shipments and in [19] in the context of air transportation. [23] present a compound cost function merging the best use of each category of transport: parcel, LTL or FTL depending on the shipment weight.

3.4 Related topics not included in the present paper

Before solving logistic issues, many management and technological issues must be fixed. Among management aspects, the identification and selection of potential partners [1, 10] and the building of trust within the coalition [16, 18, 24] are crucial success factors. Running a collaborative logistics systems also requires sharing a part of the commercial and logistic information. This often implies using collaborative information and communication technologies [7, 10, 26] which enable building consolidated load plans without disclosing sensitive strategic or commercial information.

Optimization of collaborative transportation practices aims at minimizing the distribution cost or maximizing the profit of the whole coalition. Thus, the cost allocation and the sharing of benefits is a crucial issue generally solved with game theory tools.

The objective is to find a stable coalition, i.e. a business model such that every player individually benefits from the strategic alliance. For each player, there may exist a minimum percentage of savings necessary to join the coalition. The influence of this minimal value on the global benefits is measured in [4]. Various profit allocation mechanisms are discussed in [11] and [31].

3.5 Position of the present study

Our study concerns the operational level decisions in the context of shipper collaboration. We assume that strategic decisions such as facility location have been already met and we concentrate on the daily allocation of customer to distribution centers and the optimization of material flows in the distribution network.

In our study, the main focus is set on cost minimization. The quality of service to customers and the reduction of CO_2 emissions are considered as collateral benefits of a proper use of the distribution network, but these elements are not integrated in our mathematical model. The main difficulty in our study comes from the combination of FTL and LTL shipments in a multi-layered network. Since we assume that a customer order is delivered at once, the cost of an LTL shipment represents only one point on the concave cost function represented in Figure 3. Thus, the delivery cost from one distribution center to a customer is a constant value.

One original feature of our model is that the CDC is seen as a means to facilitate the implementation of the horizontal collaboration, but the transit of goods by the CDC is not mandatory. Customer orders can be shipped directly from suppliers to RDCs or to customers without being processed at the CDC. This avoids break bulk cost. Our study potentially concerns any type of goods provided they can be carried in common vehicles. We also assume that all customer orders can be expressed with a single metric (e.g. a number of pallets or boxes) If several types of containers exist, or if bulk is transported, conversion factors are used to express all quantities with this reference metric.

4 Modeling of the (CLPDP)

We consider a set S of suppliers and a set I of customers. The quantity ordered by customer $i \in I$ to a supplier $s \in S$ is denoted by q_{is} . We also write $q_i = \sum_{s \in S} q_{is}$. Let J be the set of distribution centers, which includes the CDC (index 0) and the set $J^* \subset J$ of RDCs. With each $j \in J^*$, we associate an FTL route operated by a homogeneous fleet K_j of vehicles with capacity Q_k . The complete set of vehicles on FTL routes is denoted by $K = \bigcup_{j \in J^*} K_j$. We denote by Λ the set of all possible pickup legs. Subsets $\Lambda_s \subset \Lambda$ and $\Lambda_0 \subset \Lambda$ denote the pickup legs that visit supplier $s \in S$ and the pickup legs that visit the CDC, respectively. Finally, we denote as Γ the set of all possible supplier routes. A supplier route $\gamma \in \Gamma$ is operated by a homogeneous fleet of vehicles with capacity Q_γ .

The transportation and handling costs are defined as follows. c_{ij}^{DIST} is the distribution cost of the whole demand of customer i from distribution center $j \in J$. Recall that the

customer orders cannot be split in several LTL shipments, so that the cost c_{ij}^{DIST} is a constant value. The cost of an FTL route includes the cost c_j^{FTL} of the long-haul leg and the cost c_λ^{PL} of the pickup leg $\lambda \in \Lambda$. The cost of a supplier route $\gamma \in \Gamma$ is denoted by c_γ^{SR} . The unitary handling cost at the CDC is denoted by h . Handling costs must be paid for all products that are unloaded at the CDC.

The mixed integer linear program has four sets of binary or integer decision variables. First, for all $i \in I$ and $j \in J$, $x_{ij} = 1$ if customer i is served by the distribution center or supplier $j \in J \cup S$, and 0 otherwise. For all $k \in K$, $l_k = 1$ if FTL vehicle k is used, 0 otherwise. In addition, $v_{k\lambda} = 1$ if FTL vehicle $k \in K$ takes pickup leg $\lambda \in \Lambda$, and 0 otherwise. The integer variable n_γ indicates the number of vehicles on supplier route $\gamma \in \Gamma$. Three sets of continuous positive variables model the material flow through the network. The variable $w_{is}^{k\lambda}$ represents the number of units shipped from supplier $s \in S$ to customer $i \in I$ and carried by vehicle $k \in K$ on pickup leg $\lambda \in \Lambda$. For each supplier $s \in S$, the variable $u_{s\gamma} \in [0, Q_\gamma]$ is the number of units loaded at supplier s on supplier route $\gamma \in \Gamma$. The variable $u'_{sk} \in [0, Q_k]$ is the quantity supplied by s that is loaded onto an FTL vehicle $k \in K$ at s and unloaded at the CDC (in this case, the FTL route has some residual capacity which is used as a supplier route).

The (CLPDP) problem can be modeled as follows:

$$\min z = \sum_{\gamma \in \Gamma} c_\gamma^{\text{SR}} n_\gamma + \sum_{\lambda \in \Lambda} \sum_{k \in K} c_\lambda^{\text{PL}} v_{k\lambda} + \sum_{j \in J^*} \sum_{k \in K_j} c_j^{\text{FTL}} l_k + \sum_{i \in I} \sum_{j \in J \cup S} c_{ij}^{\text{DIST}} x_{ij} + h \sum_{s \in S} \left(\sum_{k \in K} u'_{sk} + \sum_{\gamma \in \Gamma} u_{s\gamma} \right) \quad (1)$$

s.t.

$$\sum_{j \in J \cup S} x_{ij} = 1 \quad \forall i \in I \quad (2)$$

$$\sum_{k \in K_j} \sum_{\lambda \in \Lambda} w_{is}^{k\lambda} = q_{is} x_{ij} \quad \forall s \in S, \forall i \in I, \forall j \in J^* \quad (3)$$

$$\sum_{s \in S} \sum_{i \in I} \sum_{\lambda \in \Lambda} w_{is}^{k\lambda} \leq Q_k l_k \quad \forall k \in K \quad (4)$$

$$\sum_{\lambda \in \Lambda} v_{k\lambda} = l_k \quad \forall k \in K \quad (5)$$

$$w_{is}^{k\lambda} \leq v_{k\lambda} q_{is} \quad \forall k \in K, \forall i \in I, \forall s \in S, \forall \lambda \in \Lambda_s \cup \Lambda_0 \quad (6)$$

$$u'_{sk} + \sum_{i \in I} w_{is}^{k\lambda} \leq Q_k v_{k\lambda} \quad \forall s \in S, \forall k \in K, \forall \lambda \in \Lambda_s \cap \Lambda_0 \quad (7)$$

$$\begin{aligned} \sum_{\gamma \in \Gamma_s} u_{s\gamma} + \sum_{k \in K} u'_{sk} = \\ \sum_{i \in I} q_{is} x_{i0} + \sum_{\lambda \in \Lambda_0 \setminus \Lambda_s} \sum_{k \in K} \sum_{i \in I} w_{is}^{k\lambda} \end{aligned} \quad \forall s \in S \quad (8)$$

$$\sum_{s \in S} u_{s\gamma} \leq Q_\gamma n_\gamma \quad \gamma \in \Gamma \quad (9)$$

$$x_{ij} \in \{0, 1\} \quad \forall i \in I, \forall j \in J \cup S \quad (10)$$

$$l_k \in \{0, 1\} \quad \forall k \in K \quad (11)$$

$$v_{k\lambda} \in \{0, 1\} \quad \forall k \in K, \forall \lambda \in \Lambda \quad (12)$$

$$n_\gamma \in \mathbb{N} \quad \forall \gamma \in \Gamma \quad (13)$$

$$w_{is}^{k\lambda} \in [0, q_{is}] \quad \forall i \in I, \forall \lambda \in \Lambda \quad (14)$$

$$u'_{sk} \in [0, Q_k] \quad \forall s \in S, \forall k \in K \quad (15)$$

$$u_{s\gamma} \in [0, Q_\gamma] \quad \forall s \in S, \forall \gamma \in \Gamma. \quad (16)$$

The objective function (1) contains five components corresponding to the supplier routes, the base cost of FTL route, the pickup legs, the LTL shipment and the cross-docking at the CDC. Constraints (2) state that each customer must be delivered from one unique distribution center or supplier. Conservation flow constraints (3) state that the whole quantity of goods arriving at an RDC is shipped to the customers served by this RDC. Constraints (4) are capacity constraints for FTL vehicles. Constraints (5) state that an utilized pickup leg ($l_k = 1$) should be associated with a vehicle $k \in K$. Constraints (6) state that if vehicle $k \in K$ does not visit a pickup leg $\lambda \in \Lambda$, then $w_{is}^{k\lambda}$ must be 0. Constraints (7) state that some residual capacity on a pickup leg going from a supplier s to the CDC may be used to transport goods to the CDC. Constraints (8) model flow conservation of supplier s products at the CDC: the incoming flow is the quantity transported by supplier routes and on the residual capacity of FTL vehicles. The outgoing flow corresponds to shipments from the CDC and loading in FTL vehicles.

Constraints (9) state that the flow on a supplier route γ is limited by the number of vehicles on this route and their capacities. The following constraints define the nature and the domain definition of all variables.

5 Decomposition method

The main idea of our decomposition approach is to sequentially set the value of all decisions variables. This leads to three steps, each of them being modeled by a mixed integer linear problem. These MILPs are much easier to solve than the original (**CLPDP**), so that it is hoped that the decomposition yields good feasible solutions within an acceptable calculation time.

In the first step, we solve a subproblem called (**SP1**) which allocates customers to distribution centers (variables x_{ij}) and determines the number of vehicles on each FTL route (variables l_k). Then, one subproblem (**SP2**) is solved separately for each RDC. It determines the pickup leg of each FTL vehicle (variables $v_{k\lambda}$) and dispatches customer orders in these vehicles (variables $w_{is}^{k\lambda}$). Finally, subproblem (**SP3**) designs supplier routes to consolidate orders at the CDC (variables n_γ and u'_{sk}). The three subproblems are described in sections 5.1, 5.2 and 5.3.

5.1 Subproblem (SP1): customer allocation and design of FTL routes

The Figure 4 represents the input (left part) and the output (right part) of subproblem (**SP1**). In this step, all suppliers and the CDC are aggregated into a virtual CDC. The main consequence is that FTL routes have no pickup leg anymore, so that there is only one possible FTL route between the virtual CDC and each RDC. Moreover, the cost of the FTL route to $j \in J^*$ is limited to the cost c_j^{FTL} of the long-haul leg.

In the output of subproblem (**SP1**), customers are assigned either to one RDC or to the virtual CDC and the number of FTL vehicles required on each FTL route is determined.

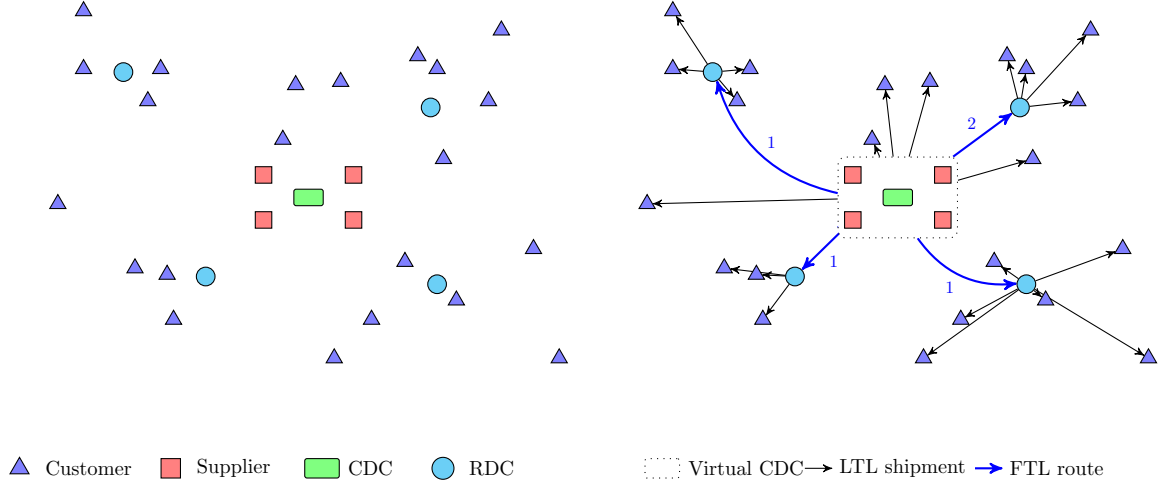


Figure 4: Subproblem (SP1) input and output

5.1.1 Modeling of subproblem (SP1)

We denote by \tilde{J} the set of distribution centers where the CDC has been replaced by the virtual CDC. For each customer $i \in I$, the shipment cost $\tilde{c}_{i0}^{\text{DIST}}$ from the virtual CDC is redefined as follows: if customer i has a demand for only one supplier $s \in S$ then $\tilde{c}_{i0}^{\text{DIST}} = c_{is}^{\text{DIST}}$, otherwise, $\tilde{c}_{i0}^{\text{DIST}} = c_{i0}^{\text{DIST}}$. For each customer $i \in I$ and each $j \in \tilde{J}$, we use the boolean variable \tilde{x}_{ij} , which is equal to 1 if customer i is served by j , 0 otherwise. For all $j \in J^*$, the positive integer variable y_j denotes the number of FTL trucks that have to be sent to j . (SP1) can then be modeled as follows:

$$\min z_1 = \sum_{j \in J^*} c_j^{\text{FTL}} y_j + \sum_{i \in I} \sum_{j \in \tilde{J}} c_{ij}^{\text{DIST}} \tilde{x}_{ij} \quad (17)$$

s.t.

$$\sum_{j \in \tilde{J}} \tilde{x}_{ij} = 1 \quad \forall i \in I \quad (18)$$

$$\sum_{i \in I} q_i \tilde{x}_{ij} \leq Q y_j \quad \forall j \in J^* \quad (19)$$

$$y_j \in \mathbb{N}, \quad \forall j \in J^* \quad (20)$$

$$\tilde{x}_{ij} \in \{0, 1\} \quad \forall i \in I, j \in \tilde{J}. \quad (21)$$

This optimization problem can be modeled as a capacitated facility location problem where each FTL route can be seen as a capacity to serve customers from an RDC. The objective function (17) minimizes the cost of FTL routes and LTL shipments. Constraints (18) state that each customer should be delivered by one facility. Constraints

(19) computes the number of FTL vehicles needed to transport the orders assigned to each RDC.

5.1.2 Output

The output of (SP1) can be used as follows to fix the variables of model (CLPDP). For each $i \in I$ and each $j \in J^*$, we set $x_{ij} = \tilde{x}_{ij}$. For a customer i assigned to the virtual CDC, if customer i has a demand for only one supplier $s \in S$, then the orders are all shipped from s ($x_{is} = \tilde{x}_{i0} = 1$). If customer i orders to at least two suppliers, it is assigned to the CDC ($x_{i0} = \tilde{x}_{i0} = 1$).

For each $j \in J^*$, we create a set $\tilde{K}_j \subseteq K_j$ of vehicles, with $|\tilde{K}_j| = y_j$. The decision variable l_k of the (CLPDP) is set to 1 for all $k \in \tilde{K}_j$ and to 0 otherwise.

5.2 Subproblem (SP2): design of FTL routes and load planning

In the second step, one distinct instance of subproblem (SP2) is solved for each RDC. Figure 5 illustrates the input and output of subproblem (SP2) corresponding to the north east RDC denoted j . The problem consists of (i) determining the pickup leg that should be assigned to each of the $|\tilde{K}_j|$ FTL vehicles that serve j ; (ii) for each customer i that has a demand q_{is} to a supplier s , the portion of this demand carried by each vehicle.

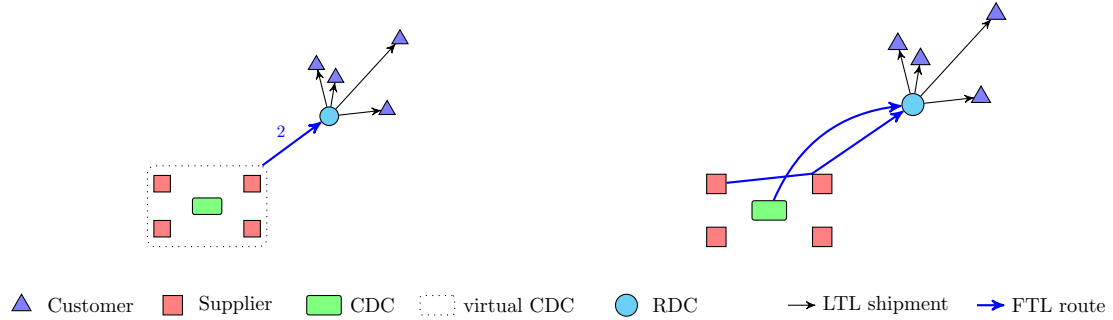


Figure 5: Subproblem (SP2) input and output for a given RDC

5.2.1 Subproblem (SP2) notation and assumptions

For a given $j \in J^*$, the solution of subproblem (SP1) yields a set \tilde{K}_j of FTL vehicles that serve j . We also define the set I_j of customers assigned to j .

(SP2) determines the value of binary variables $v_{k\lambda}$ which are equal to 1 if truck $k \in \tilde{K}_j$ starts with pickup part $\lambda \in \Lambda$, and continuous variables $w_{is}^{k\lambda} \in [0, q_i^s]$, which represents the number of units from the order of customer i to supplier s that are transported in vehicle $k \in \tilde{K}_j$ on pickup part $\lambda \in \Lambda$.

In subproblem (SP2), it is assumed that the residual capacity on a pickup leg from a supplier s to the CDC cannot be used to replace supplier routes (i.e. variables u'_{sk} are ignored). It is also assumed that all supplier routes are direct trips from suppliers to the

CDC. The cost θ_s of each unit carried on the supplier route between supplier $s \in S$ and the CDC is approximated to $\theta_s = h + \frac{c_s^{\text{SR}}}{Q_\gamma}$.

5.2.2 Modeling of subproblem (SP2)

For a given $j \in J^*$, we model the subproblem (SP2) _{j} as follows:

$$\min z_2^j = \sum_{k \in \tilde{K}_j} \sum_{\lambda \in \Lambda} \alpha_\lambda v_{k\lambda} + \sum_{i \in I_j} \sum_{k \in \tilde{K}_j} \sum_{s \in S} \sum_{\lambda \in \Lambda \setminus \Lambda_s} \theta_s w_{is}^{k\lambda} \quad (22)$$

s. t.

$$\sum_{\lambda \in \Lambda} v_{k\lambda} = 1 \quad \forall k \in \tilde{K}_j \quad (23)$$

$$\sum_{k \in \tilde{K}_j} \sum_{\lambda \in \Lambda_s \cup \Lambda_0} w_{is}^{k\lambda} = q_{is} \quad \forall i \in I_j, \forall s \in S \quad (24)$$

$$\sum_{s \in S} \sum_{i \in I_j} w_{is}^{k\lambda} \leq v_{k\lambda} Q_k \quad \forall k \in \tilde{K}_j, \forall \lambda \in \Lambda \quad (25)$$

$$v_{k\lambda} \in \{0, 1\} \quad \forall k \in \tilde{K}_j, \forall \lambda \in \Lambda \quad (26)$$

$$w_{is}^{k\lambda} \in [0, q_{is}] \quad \forall i \in I_j, \forall s \in S, \forall k \in \tilde{K}_j, \forall \lambda \in \Lambda \quad (27)$$

The first sum in the objective function (22) represents the cost of the selected pickup legs. The second sum is an estimation of the supplier routes cost for the remaining goods. Constraints (23) state that one unique pickup leg is assigned to each vehicle. Constraints (24) ensure the satisfaction of customers demand, stating that an order from supplier s can be transported in a vehicle that either visits s or the CDC. Constraints (25) state that the sum all of demands on a pickup leg $\lambda \in \Lambda$ should not exceed the vehicle capacity Q_k .

5.3 Subproblem (SP3): selection of supplier routes

Supplier routes are used to transport the goods that must be pickup up at suppliers and delivered to the CDC. Then, these goods can be shipped directly to customers or loaded onto FTL vehicles. Once customer orders have been assigned to distribution centers and all FTL vehicle itineraries are set, (SP3) selects the supplier routes and the number of vehicles on each supplier route.

We recall that when the pickup leg of an FTL route visits a supplier s before visiting the CDC, the residual capacity of the FTL vehicles can be used to ship goods between s and the CDC at no additional cost. Note that an explicit assignment of every customer order to the vehicles on supplier routes is not required here: the model ensures that the capacity on supplier routes is sufficient to supply the CDC.

Figure 6 illustrates the contribution of (SP3) to the design of the complete network.

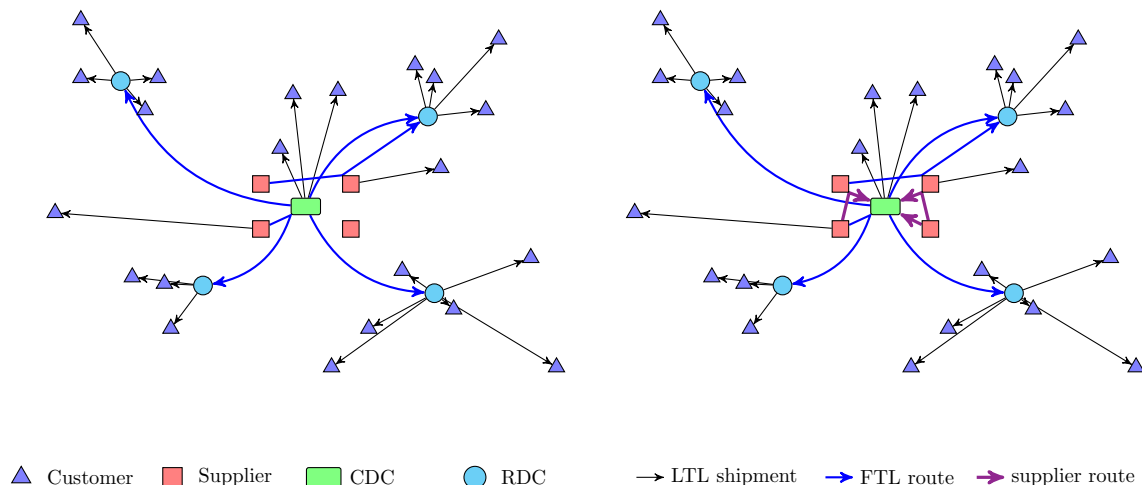


Figure 6: Subproblem (**SP3**) input and output

5.3.1 Subproblem (**SP3**): input and notation

We denote by q'_s the total load that has to be transported from a supplier $s \in S$ to the CDC. According to the results of (**SP1**) and (**SP2**), q'_s can be calculated as follows:

$$q'_s = \sum_{i \in S} q_{is} x_{i0} + \sum_{i \in I} \sum_{k \in K} \sum_{\lambda \in \Lambda_0 \setminus \Lambda_s} w_{is}^{k\lambda}.$$

The first sum represents the orders that are shipped from the CDC and the second sum represents the number of units loaded onto FTL vehicles at the CDC.

The set of vehicles that use the pickup leg $\lambda_{s0} \in \Lambda_s \cap \Lambda_0$ from a supplier $s \in S$ to the CDC (e.g. such that $v_{k\lambda_{s0}} = 1$) is denoted by K'_s . The residual capacity on a vehicle $k \in K'_s$ is denoted by Q_s^k .

For each supplier route $\gamma \in \Gamma$, (**SP3**) determines the value of variable $n_\gamma \in \mathbb{N}$ representing the number of vehicles on route γ . For each supplier $s \in S$, it also determines the value of the continuous variables $u_{s\gamma}$, for all $\gamma \in \Gamma$ and u'_{sk} , for all $k \in K'_s$. These variables represent the load from supplier s on supplier route γ and on the residual capacity of FTL vehicle k pickup leg, respectively.

5.3.2 Modeling of subproblem (SP3)

$$\min z_3 = \sum_{\gamma \in \Gamma} c_\gamma n_\gamma \quad (28)$$

s.t.

$$\sum_{\gamma \in \Gamma_s} u_{s\gamma} + \sum_{k \in K'_s} u'_{sk} \geq q'_s \quad \forall s \in S \quad (29)$$

$$\sum_{s \in S} u_{s\gamma} \leq Q_\gamma \times n_\gamma \quad \forall \gamma \in \Gamma \quad (30)$$

$$n_\gamma \in \mathbb{N} \quad \forall \gamma \in \Gamma \quad (31)$$

$$u_{s\gamma} \in [0, Q_\gamma] \quad \forall s \in S, \forall \gamma \in \Gamma_s \quad (32)$$

$$u'_{sk} \in [0, Q'_s] \quad \forall s \in S, \forall k \in K'_s. \quad (33)$$

The objective function (28) minimizes the cost of supplier routes. Constraints (29) enforce the total load of each supplier to be transported to the CDC, either by using the residual capacity on FTL pickup legs or through supplier routes. Constraints (30) connects the load on each supplier route to the number of vehicles needed on this route according to the supplier vehicles capacity Q_γ .

6 Experiments and case study

In this section, we present numerical experiments on a real-life case study. All models have been coded in Java using the Concert Technology framework of CPLEX 12.6. Tests were run on a PC Intel Core i7-4600U processor 2.1 Ghz with 16 Gb of memory under the System Windows 8.1. For all models solved in this section, the best parameters of CPLEX were determined with the CPLEX tuning tool.

According to an agreement with the suppliers in this study, no cost or indication on savings provided by collaboration can be presented in this paper. We focus on the assessment of the decomposition approach, comparing runtime and gap with the lower bound provided by the solving of the (**CLPDP**) model.

6.1 The distribution network

The distribution network includes 7 suppliers, 1 CDC, 6 RDCs and 5128 customers. The suppliers form a geographical cluster in Western France: the maximal distance between two facilities is only 60 km. Customers are mainly specialized stores (65%), supermarkets or retail stores (26%), but also resellers, local authorities, schools, etc. They are spread over the whole territory, with an average distance of 380 km to the suppliers. The average quantity per shipment is only 2.6 units. We observe that a few hundreds major regular customers generally order to several suppliers among the 7 collaborating companies. Besides, a large number of customers order very small quantities and many occasional customers order only once or a few times a year.

The set Λ of pickup legs of FTL routes can either include the CDC (1 possibility), one supplier only ($|S|$ possibilities), or one supplier plus another supplier or the CDC ($|S| \times (|S| - 1) + 1$ possibilities). So, we have $|\Lambda| = 1 + 7 + 7 \times 7 = 57$ pickup legs. This results in $57 \times 6 = 342$ feasible FTL routes. The set Γ of supplier routes includes direct trips from a supplier to the CDC (7 possibilities) or trips with one stopover at another supplier before delivering the CDC ($|S| \times (|S| - 1)$ possibilities). So, we have $|\Gamma| = 7 + 7 \times 6 = 49$ supplier routes.

6.2 Data collection

We dispose of an exhaustive recording of one complete year of activity representing 74039 shipments. The number of weekly deliveries is 3 during the high season, 2 during the mid-season and 1 during the low season. This results in 121 shipping dates, and then in 121 instances. The number of units considered in an instance varies between 6 and 6345.

We empirically observed that the cost of LTL shipments from the production area to all customers follows a MAUD cost structure. Unfortunately, since each shipment concerns small discrete quantities, identifying breakpoints and capturing the parameters of the cost curve was impossible in practice due to the lack of data. Moreover, the cost of LTL shipments from RDCs to customers is not known with much precision. In order to generate realistic LTL shipment costs, we aggregated customers from each of the 95 French departments and established a list of 1134 distinct known costs. Then, we followed the approach of [5] and [36] and estimated the costs by means of a regression model. The LTL cost could be expressed with good accuracy as a non-linear function of the number of units and the distance between the origin and the destination.

6.3 Solving model (CLPDP)

All 121 (**CLPDP**) instances were solved with a computing time of 5 minutes and 1 hour respectively. The shorter computation time is considered as acceptable for a daily use of the model and simulations of various scenarios. The results related to each computational time are denoted as $CLPDP^5$ and $CLPDP^{60}$ respectively. They are presented in Figure 7. Each point in this figure represents the performance of CPLEX on one instance. The horizontal axis represents the total customer demand expressed in number of logistic units. The vertical axis represents the relative gap between the lower bound Z_{lb} and the upper bound Z provided by the solver. It is computed as $(Z - Z_{lb})/Z_{lb} \times 100$.

It is clear that only some small instances can be solved to optimality within an acceptable time. When the solving time is increased, the results found on large instances remain really far from the lower bound.

As far as $CLPDP^5$ is concerned, the optimality gap suddenly becomes very large when the number of units exceeds 1300. It is 30.5% on average for instances with more than 1300 units.

Only instance with up to 400 units could be solved to optimality by $CLPDP^{60}$. The optimality gap increases quickly when the number of units exceeds 2800. It is 34.3% on

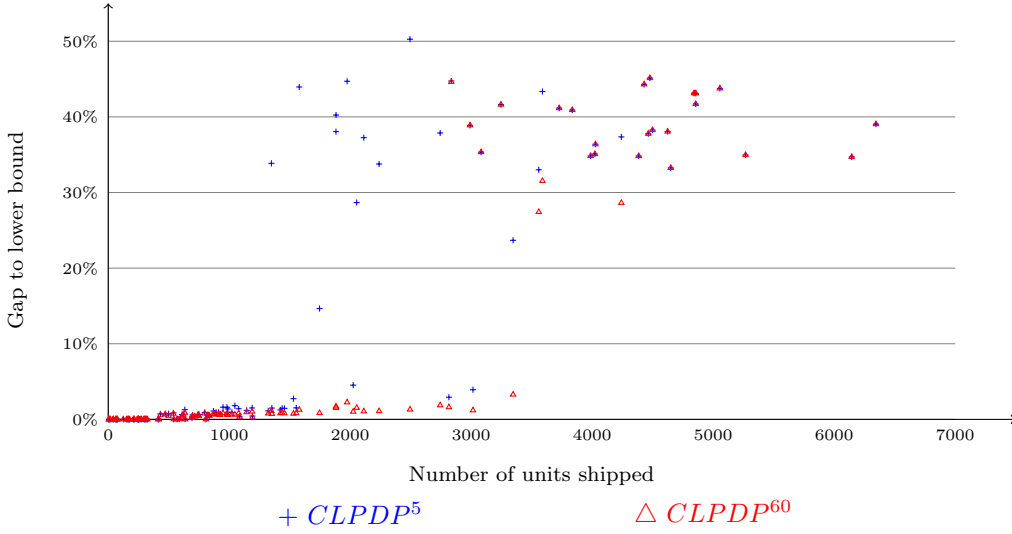


Figure 7: Results of $CLPDP^5$ and $CLPDP^{60}$

average on instances with more than 2800 units.

6.4 Results of the decomposition approach

The decomposition into subproblems **(SP1)**, **(SP2)** and **(SP3)** was solved with an allowed computation time of 5 minutes spread over all models, and then with no time limit. These results are denoted as SP^5 and SP^* respectively.

Figure 8 compares the results of $CLPDP^{60}$ and SP^* . For SP^* , we calculate the relative gap with the lower bound given by $CLPDP^{60}$. On small instances, the optimality gaps of SP^* and $CLPDP^{60}$ are comparable. On larger instances, a remarkable fact is that the size of the instances does not seem to influence the performance of the decomposition approach: very good solutions can be reached even on large instances. Another remark is that the lower bound found by CPLEX while solving the **(CLPDP)** is actually very close to a feasible solution.

Figure 9 shows the gap between the upper bound provided for SP^5 and the lower bound given by $CLPDP^{60}$. In fact, results found by SP^5 and SP^* are almost identical: they have the same minimal gap (0.0%), average gap (0.75%) and maximal gap (1.6%).

Table 1 shows how computation times is spread over the solving of subproblems **(SP1)**, **(SP2)** and **(SP3)** in scenarios SP^5 and SP^* . The objective of this table is to assess the practical difficulty of each subproblem. Clearly, subproblem **(SP2)** is the most difficult one with an average required computation time running time of 385.7 seconds and a maximal computation time of 3524 seconds for SP^* . Given that the numerical results of scenarios SP^5 and SP^* are almost identical, we observe that optimal solutions of subproblem **(SP2)** can be found quickly but optimality is hard to prove.

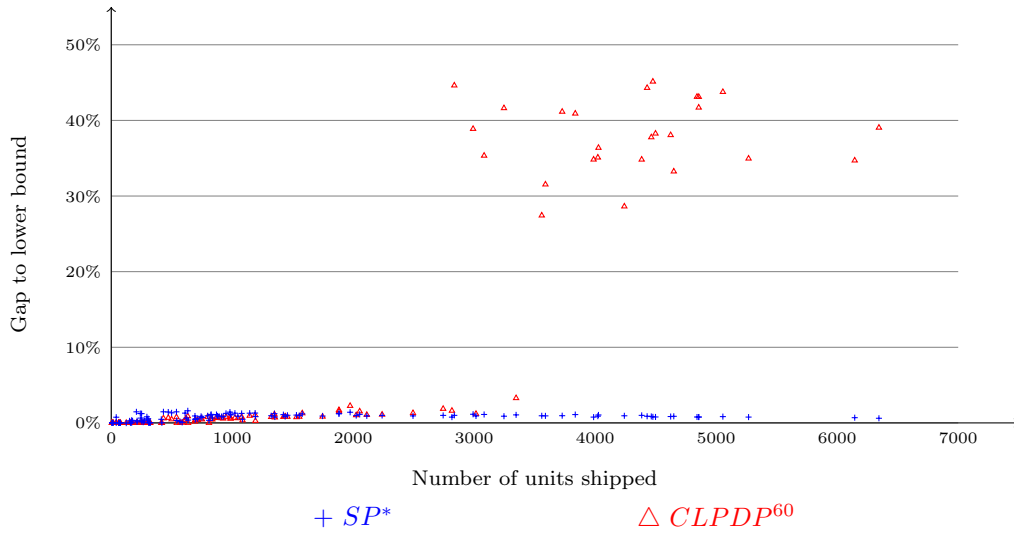


Figure 8: Results of $CLPDP^{60}$ and SP^*

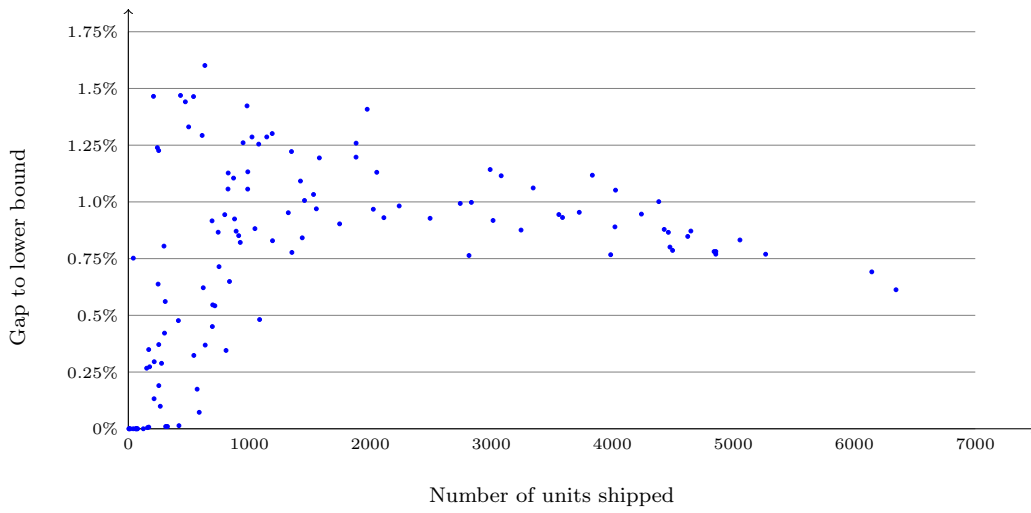


Figure 9: Results of SP^5

Table 1: Computation time in each subproblem (in seconds)

	SP^*		SP^5	
	Avg Time	Max Time	Avg Time	Max Time
(SP1)	0.3	4	0.3	3
(SP2)	385.7	3524	53.0	300
(SP3)	0.0	1	0.0	1

6.5 Detailed results

Table 2 details the results found by each algorithm for each instance. Columns labeled *Inst* and *Units* stand for the name of instance and the number of shipped units. Columns labeled $CLPDP^{60}$, SP^5 and SP^* represent the relative gap between scenarios $CLPDP^{60}$, SP^5 and SP^* . The relative gaps are calculated between the solution value Z of each scenario and the best solution value Z_{best} among the three scenarios. It is computed as $(Z - Z_{best})/Z_{best} \times 100$. $CLPDP^{60}$ finds 80 best solutions, SP^* finds 55 best solutions, out of them 49 are also found by SP^5 . On 15 instances $CLPDP^{60}$, SP^5 and SP^* find solutions with identical costs. Table 2 indicates identical value for scenarios SP^5 and SP^* on all but 3 instances. In reality, 5 more results slightly differ between both scenario, but with a gap less than 0.01%. We can notice that exactly solving the original model never outperforms the decomposition approach by more than 1.5%. On the contrary, for all large instances, the decomposition approach clearly outperforms scenario $CLPDP^{60}$.

7 Conclusion

In this paper, we considered the routing of customer orders in a collaborative distribution network for a set of neighbor suppliers who want to reduce their distribution cost. We defined the Collaborative Load Plan Design Problem (**CLPDP**) which concerns the operational level decisions on each shipping date. It consists of assigning customers to end-of-line distribution centers, determining the material flow along three successive transportation segments: supplier routes, FTL routes and LTL shipments. We introduced a mixed integer linear programming formulation for this problem and proposed to decompose it into three subproblems which are sequentially solved. The experiments on a full year of distribution orders showed that model (**CLPDP**) cannot be solved efficiently by a state-of-the-art solver. On the contrary, the decomposition provides near optimal solutions within a few minutes.

Adding valid inequalities to the (**CLPDP**) model or finding a stronger formulation would probably help solving it more efficiently, but the lower bound found by CPLEX is already very good. In future research, we intend to extend the present problem by considering several additional assumptions. In many real-life cases, several types of containers are used to ship the products. Customers are located in geographical areas which are given priority levels. These two new rules complicate the load plan. We considered that the long-haul leg of FTL routes visit only one RDC and that its cost is constant. In practice, there can exist long-haul legs with two RDCs and also intermediate costs for a few partial loads. Finally, we assumed an already existing network with imposed RDC locations. We also assumed that the allocation of customer to RDCs could be revised everyday. In many real cases, a preliminary strategic problem is to select the RDCs among a large set of potential candidate locations. For practical reasons, it is safer to set customer-RDC allocation at least for one season. Hence, the optimization of collaborative distribution networks raises many additional strategic, tactical and operational

Table 2: Relative performance of scenarios $CLPDP^{60}$, SP^* and SP^5 (gaps in % to the lower bound returned by $CLPDP^{60}$)

<i>Inst.</i>	<i>Units</i>	$CLPDP^{60}$	SP^5	SP^*	<i>Inst.</i>	<i>Units</i>	$CLPDP^{60}$	SP^5	SP^*
i1	6	0.00	0.00	0.00	i61	912	0.00	0.21	0.21
i2	6	0.00	0.00	0.00	i62	925	0.00	0.24	0.24
i3	7	0.00	0.00	0.00	i63	948	0.00	0.45	0.45
i4	17	0.00	0.00	0.00	i64	981	0.00	0.68	0.68
i5	41	0.00	0.75	0.75	i65	987	0.00	0.46	0.46
i6	41	0.00	0.00	0.00	i66	987	0.00	0.56	0.56
i7	60	0.00	0.00	0.00	i67	1022	0.00	0.61	0.61
i8	63	0.00	0.00	0.00	i68	1046	0.00	0.26	0.26
i9	67	0.00	0.00	0.00	i69	1078	0.00	0.45	0.45
i10	73	0.00	0.00	0.00	i70	1085	0.00	0.13	0.13
i11	76	0.00	0.00	0.00	i71	1144	0.00	0.33	0.33
i12	124	0.03	0.00	0.00	i72	1189	0.00	0.26	0.26
i13	152	0.00	0.26	0.26	i73	1192	0.00	0.56	0.56
i14	158	0.00	0.00	0.00	i74	1322	0.00	0.17	0.17
i15	168	0.00	0.34	0.34	i75	1348	0.00	0.08	0.08
i16	169	0.00	0.00	0.00	i76	1352	0.00	0.05	0.05
i17	176	0.00	0.27	0.27	i77	1423	0.00	0.29	0.29
i18	208	0.00	1.47	1.47	i78	1437	0.02	0.00	0.00
i19	213	0.00	0.13	0.13	i79	1456	0.00	0.19	0.19
i20	214	0.00	0.29	0.29	i80	1531	0.00	0.27	0.27
i21	240	0.00	1.23	1.23	i81	1554	0.00	0.15	0.15
i22	246	0.00	0.64	0.64	i82	1579	0.08	0.00	0.00
i23	251	0.00	1.22	1.22	i83	1746	0.00	0.07	0.07
i24	251	0.00	0.36	0.36	i84	1882	0.50	0.00	0.00
i25	252	0.00	0.19	0.19	i85	1883	0.25	0.00	0.00
i26	264	0.00	0.10	0.10	i86	1974	0.83	0.00	0.00
i27	274	0.00	0.28	0.28	i87	2025	0.05	0.00	0.00
i28	295	0.00	0.80	0.80	i88	2053	0.39	0.00	0.00
i29	299	0.00	0.41	0.41	i89	2112	0.13	0.00	0.00
i30	305	0.00	0.55	0.55	i90	2238	0.11	0.00	0.00
i31	309	0.00	0.00	0.00	i91	2494	0.37	0.00	0.00
i32	317	0.00	0.00	0.00	i92	2743	0.86	0.00	0.00
i33	323	0.00	0.00	0.00	i93	2816	0.84	0.00	0.00
i34	414	0.00	0.47	0.47	i94	2835	43.20	0.00	0.00
i35	418	0.00	0.00	0.00	i95	2990	37.31	0.00	0.00
i36	431	0.00	0.86	0.86	i96	3014	0.28	0.00	0.00
i37	471	0.00	0.76	0.76	i97	3082	33.84	0.00	0.00
i38	499	0.00	0.85	0.85	i98	3246	40.39	0.00	0.00
i39	539	0.00	0.70	0.70	i99	3346	2.19	0.00	0.00
i40	541	0.00	0.31	0.31	i100	3558	26.24	0.00	0.00
i41	569	0.00	0.16	0.16	i101	3588	30.32	0.00	0.00
i42	586	0.00	0.04	0.04	i102	3727	39.82	0.00	0.00
i43	610	0.00	0.89	0.89	i103	3835	39.37	0.02	0.00
i44	619	0.00	0.01	0.01	i104	3987	33.80	0.00	0.00
i45	633	0.00	0.72	0.72	i105	4022	33.90	0.00	0.00
i46	635	0.00	0.36	0.36	i106	4027	34.96	0.00	0.00
i47	692	0.00	0.74	0.74	i107	4241	27.43	0.00	0.00
i48	694	0.00	0.05	0.05	i108	4384	33.49	0.00	0.00
i49	697	0.00	0.14	0.14	i109	4429	43.04	0.00	0.00
i50	715	0.00	0.16	0.16	i110	4463	36.60	0.01	0.00
i51	742	0.00	0.29	0.29	i111	4476	43.98	0.00	0.00
i52	749	0.00	0.25	0.25	i112	4498	37.18	0.00	0.00
i53	797	0.00	0.14	0.14	i113	4623	36.91	0.01	0.00
i54	808	0.00	0.34	0.34	i114	4649	32.10	0.00	0.00
i55	824	0.00	0.55	0.55	i115	4841	42.02	0.00	0.00
i56	825	0.00	0.64	0.64	i116	4855	40.62	0.00	0.00
i57	836	0.00	0.18	0.18	i117	4856	42.01	0.00	0.00
i58	870	0.00	0.37	0.37	i118	5055	42.58	0.00	0.00
i59	878	0.00	0.28	0.28	i119	5267	33.93	0.00	0.00
i60	891	0.00	0.17	0.17	i120	6145	33.78	0.00	0.00
					i121	6345	38.19	0.00	0.00

problem which still deserve much research effort.

Acknowledgements: This research was partially funded by the FUI (Fonds unique interministériel) and labeled by the competitive clusters VEGEPOLYS and Nov@log. This support is gratefully acknowledged.

References

- [1] Adenso-Díaz, B., Lozano, S., Moreno, P.: Analysis of the synergies of merging multi-company transportation needs. *Transportmetrica A: Transport Science* **10**(6), 533–547 (2014)
- [2] Álvarez-SanJaime, O., Cantos-Sánchez, P., Moner-Colonques, R., Sempere-Monerris, J.J.: Competition and horizontal integration in maritime freight transport. *Transportation Research Part E: Logistics and Transportation Review* **51**, 67–81 (2013)
- [3] Andersen, J., Christiansen, M., Crainic, T.G., Grønhaug, R.: Branch and price for service network design with asset management constraints. *Transportation Science* **45**(1), 33–49 (2011)
- [4] Audy, J.F., D’Amours, S., Rousseau, L.M.: Cost allocation in the establishment of a collaborative transportation agreement - an application in the furniture industry. *Journal of the Operational Research Society* **62**(10), 960–970 (2011)
- [5] le Blanc, H., F., C., Fleuren, H., de Koster, M.: Factory gate pricing: An analysis of the dutch retail distribution. *European Journal of Operational Research* **174**(3), 1950–1967 (2006)
- [6] Brown, G., Ronen, D.: Consolidation of customer orders into truckloads at a large manufacturer. *Journal of the Operational Research Society* **48**(8), 779–785 (1997)
- [7] Buijs, P., (“Hans”) Wortmann, J.: Joint operational decision-making in collaborative transportation networks: the role of it. *Supply Chain Management: An International Journal* **19**(2), 200–210 (2014)
- [8] Crainic, T.G.: Service network design in freight transportation. *European Journal of Operational Research* **122**(2), 272–288 (2000)
- [9] Crainic, T.G., Hewitt, M., Toulouse, M., Vu, D.M.: Service network design with resource constraints. *Transportation Science* (2014). DOI 10.1287/trsc.2014.0525
- [10] Cruijssen, F., Cools, M., Dullaert, W.: Horizontal cooperation in logistics: Opportunities and impediments. *Transportation Research part E* **43**(2), 129–142 (2007)
- [11] Dai, B., Chen, H.: Profit allocation mechanisms for carrier collaboration in pickup and delivery service. *Computers and Industrial Engineering*. **62**(2), 633–643 (2012)

- [12] Erera, A.L., Hewitt, M., Savelsbergh, M.W., Zhang, Y.: Creating schedules and computing operating costs for LTL load plans. *Computers & Operations Research* **40**(3), 691–702 (2013)
- [13] Erera, A.L., Hewitt, M., Savelsbergh, M.W.P., Zhang, Y.: Improved load plan design through integer programming based local search. *Transportation Science* **47**(3), 412–427 (2013)
- [14] Ergun, O., Kuyzu, G., Savelsbergh, M.: Shipper collaboration. *Computers & Operations Research* **34**(6), 1551–1560 (2007)
- [15] eyefortransport: European supply chain horizontal collaboration report 2010. Tech. rep., eyefortransport (2010)
- [16] Groothedde, B., Ruijgrok, C., Tavasszy, L.: Towards collaborative, intermodal hub networks: A case study in the fast moving consumer goods market. *Transportation Research part E* **41**(6), 567–583 (2005)
- [17] Hill, J., Galbreth, M.: A heuristic for single-warehouse multiretailer supply chains with all-unit transportation cost discounts. *European Journal of Operational Research* **187**(2), 473–482 (2008)
- [18] Hingley, M., Lindgreen, A., Grant, D.B., Kane, C.: Using fourth-party logistics management to improve horizontal collaboration among grocery retailers. *Supply Chain Management: An International Journal* **16**(5), 316–327 (2011)
- [19] Huang, K., Chi, W.: A lagrangian relaxation based heuristic for the consolidation problem of airfreight forwarders. *Transportation Research part C* **15**(4), 235–245 (2007)
- [20] Koca, E., Yildirim, E.A.: A hierarchical solution approach for a multicommodity distribution problem under a special cost structure. *Computers & Operations Research* **39**(11), 2612–2624 (2012)
- [21] Krajewska, M.A., Kopfer, H.: Transportation planning in freight forwarding companies: Tabu search algorithm for the integrated operational transportation planning problem. *European Journal of Operational Research* **197**(2), 741–751 (2009)
- [22] Krajewska, M.A., Kopfer, H., Laporte, G., Ropke, S., Zaccour, G.: Horizontal cooperation among freight carriers: Request allocation and profit sharing. *Journal of the Operational Research Society* **59**(11), 1483–1491 (2008)
- [23] Lapierre, S.D., Ruiz, A.B., Soriano, P.: Designing distribution networks: Formulations and solution heuristic. *Transportation Science* **38**(2), 174–187 (2004)
- [24] Leitner, R., Meizer, F., Prochazka, M., Sihn, W.: Structural concepts for horizontal cooperation to increase efficiency in logistics. *CIRP Journal of Manufacturing Science and Technology* **4**(3), 332–337 (2011)

- [25] Lindsey, K.A., Erera, A.L., Savelsbergh, M.W.: A pickup and delivery problem using crossdocks and truckload lane rates. *EURO Journal on Transportation and Logistics* **2**(1-2), 5–27 (2013)
- [26] Mason, R., Lalwani, C., Boughton, R.: Combining vertical and horizontal collaboration for transport optimisation. *Supply Chain Management: An International Journal* **12**(3), 187–199 (2007)
- [27] Mui Ann Chan, L., Muriel, A., Max Shen, Z.J., Simchi-Levi, D., Teo, C.P.: Effective zero-inventory-ordering policies for the single-warehouse multiretailer problem with piecewise linear cost structures. *Management Science* **48**(11), 1446–1460 (2002)
- [28] Pan, S., Ballot, E., Fontane, F.: The reduction of greenhouse gas emissions from freight transport by pooling supply chains. *International Journal of Production Economics* **143**(1), 83–94 (2013)
- [29] Qu, W.W., Bookbinder, J.H., Iyogun, P.: An integrated inventory-transportation system with modified periodic policy for multiple products. *European Journal of Operational Research* **115**(2), 254–269 (1999)
- [30] Song, H., Hsu, V.N., Cheung, R.K.: Distribution coordination between suppliers and customers with a consolidation center. *Operations Research* **56**(5), 1264–1277 (2008)
- [31] Vanovermeire, C., Sörensen, K.: Measuring and rewarding flexibility in collaborative distribution, including two-partner coalitions. *European Journal of Operational Research* **239**(1), 157–165 (2014)
- [32] Verstrepen, S., Cools, M., Cruijssen, F., Dullaert, W.: A dynamic framework for managing horizontal cooperation in logistics. *International Journal of Logistics Systems and Management* **5**(3), 228–248 (2009)
- [33] Wang, X., Kopfer, H.: Collaborative transportation planning of less-than-truckload freight. *OR Spectrum* **36**(2), 357–380 (2014)
- [34] Yilmaz, O., Savasaneril, S.: Collaboration among small shippers in a transportation market. *European Journal of Operational Research* **218**(2), 408–415 (2012)
- [35] Zhou, G., Hui, Y.V., Liang, L.: Strategic alliance in freight consolidation. *Transportation Research part E* **47**(1), 18–29 (2011)
- [36] Özkaya, E., Keskinocak, P., Joseph, V.R., Weight, R.: Estimating and benchmarking less-than-truckload market rates. *Transportation Research part E* **46**(5), 667–682 (2010)