

**Supporting Information for:****Swapping Field-Effect Transistor Characteristics in Polymeric Diketopyrrolopyrrole Semiconductors: Debut of an Electron Dominant Transporting Polymer**

*Junghoon Lee,* <sup>a</sup> *Shinuk Cho,* <sup>b</sup> *Jung Hwa Seo,* <sup>c</sup> *Piyush Anant,* <sup>d</sup> *Josemon Jacob,* <sup>d</sup> and *Changduk Yang,* <sup>\*a</sup>

<sup>a</sup> Interdisciplinary School of Green Energy and KIER-UNIST Advanced Center for Energy, Ulsan National Institute of Science & Technology (UNIST), Ulsan 689-798, South Korea.

<sup>b</sup> Department of Physics and EHSRC, University of Ulsan, Ulsan 680-749, South Korea.

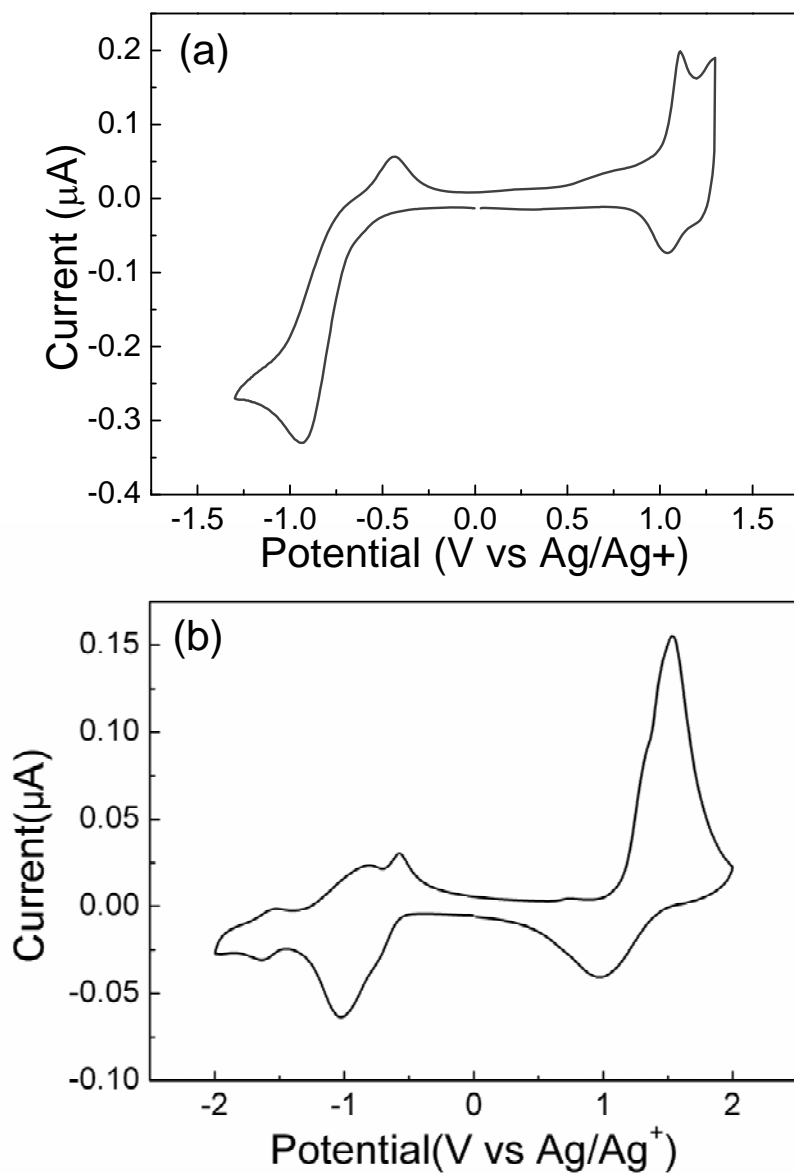
<sup>c</sup> Department of Materials Physics, Dong-A University, Busan 604-714, South Korea.

<sup>d</sup> Centre for Polymer Science and Engineering, Indian Institute of Technology, Hauz Khas, New Delhi, India.

\*E-mail: yang@unist.ac.kr, Tel: +82-52-217-2920, Fax: +82-52-217-2909

**Contents**

Page S2.	Cyclic voltammograms of <b>PDTDPP-TPA</b> (a) and <b>PDTDPP-BT</b> (b).
Page S3-S4.	DFT-optimized geometries and charge-density isosurfaces for the HOMO and LUMO levels of thiophenyl <b>DPP</b> -based polymers consisting of two units.
Page S4.	GPC curve (standard PS) of <b>PDTDPP-BisBT</b> .
Page S5.	<sup>1</sup> H NMR spectroscopy of <b>PDTDPP-BisBT</b> .



**Figure S1.** Cyclic voltammograms of **PDTDPP-TPA** (a) and **PDTDPP-BT** (b).

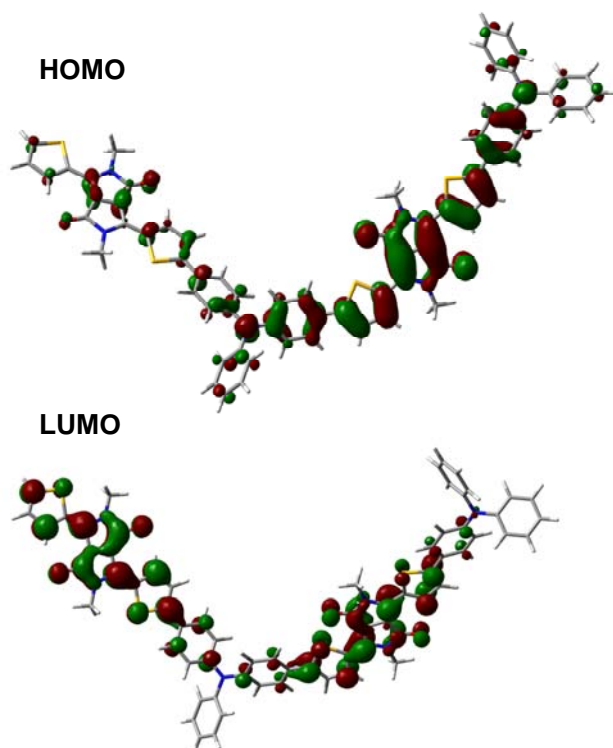


Figure S2. DFT-optimized geometries and charge-density isosurfaces for the HOMO and LUMO levels of **PDTDPP-TPA** consisting of two units.

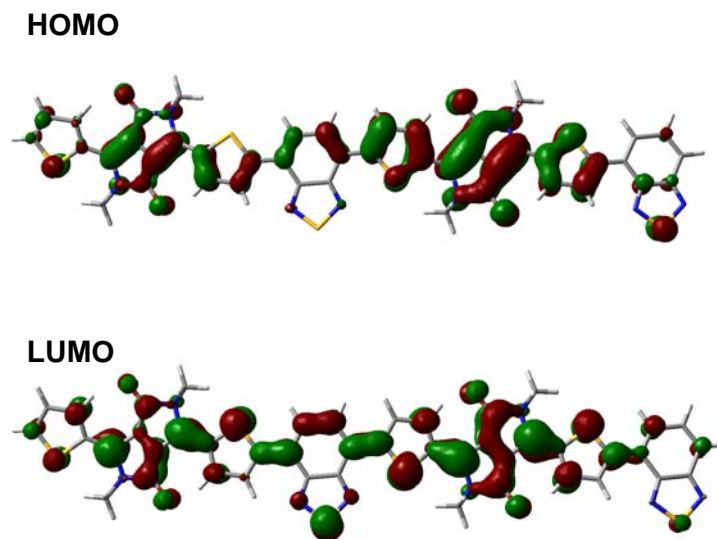


Figure S3. DFT-optimized geometries and charge-density isosurfaces for the HOMO and LUMO levels of **PDTDPP-BT** consisting of two units.

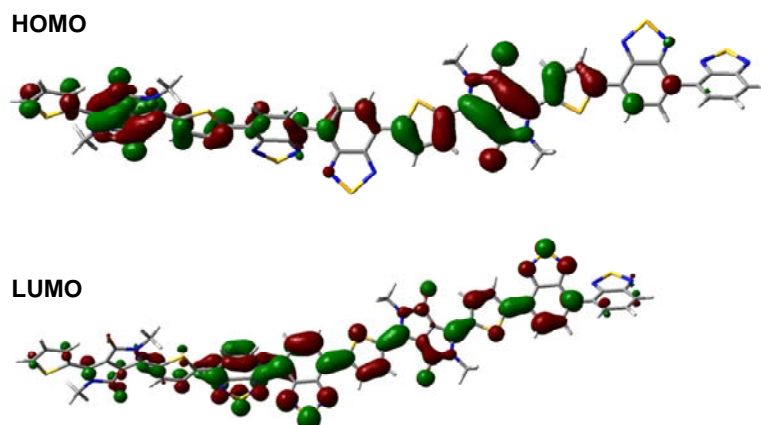


Figure S4. DFT-optimized geometries and charge-density isosurfaces for the HOMO and LUMO levels of **PDTDPP-BisBT** consisting of two units.

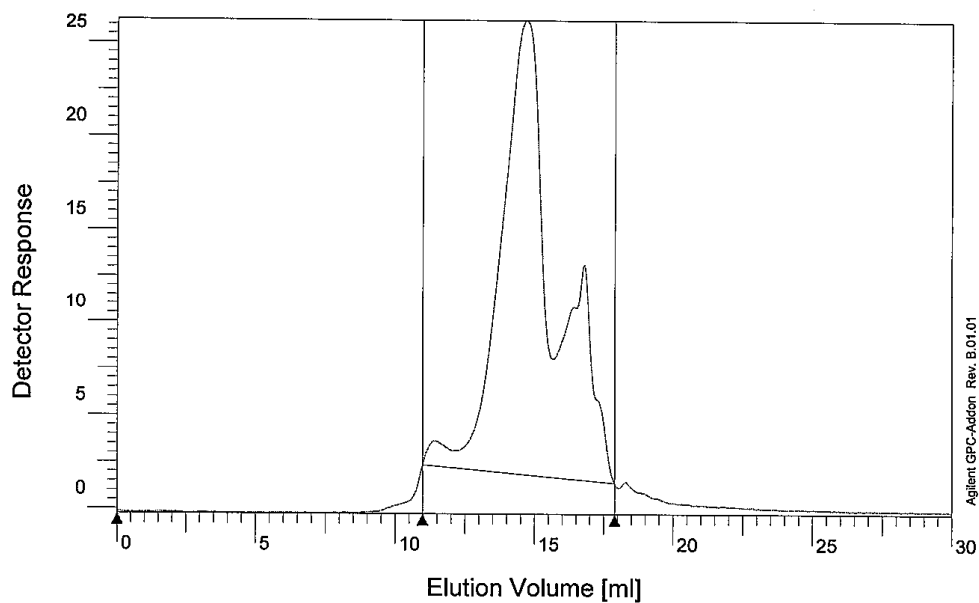


Figure S5. GPC curve (standard PS) of **PDTDPP-BisBT**.

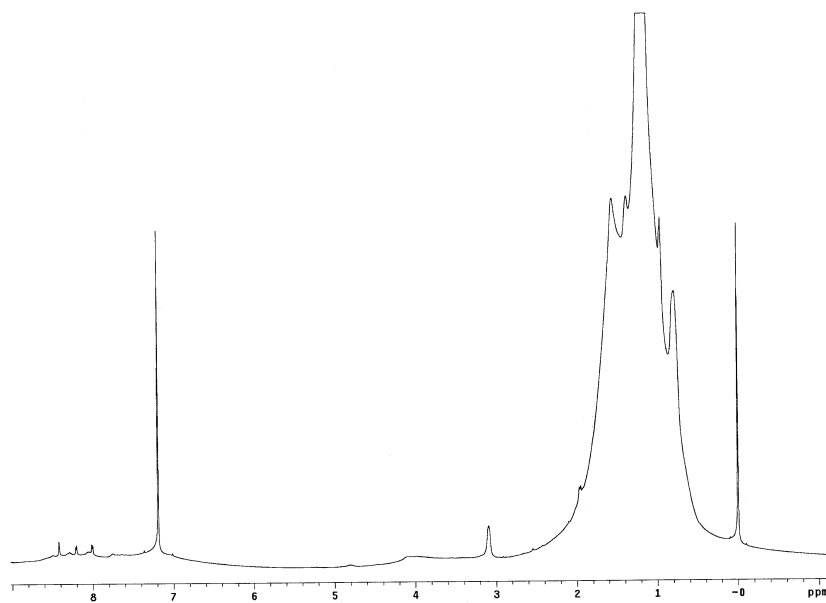


Figure S6.  $^1\text{H}$  NMR spectroscopy of **PDTDP-BisBT**.