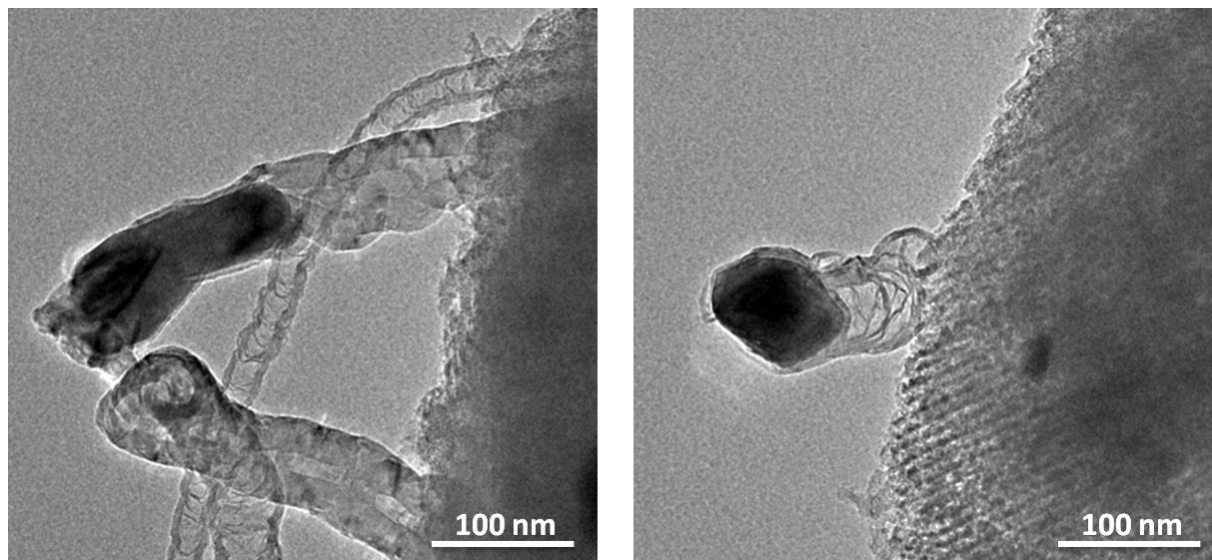


Supporting Information

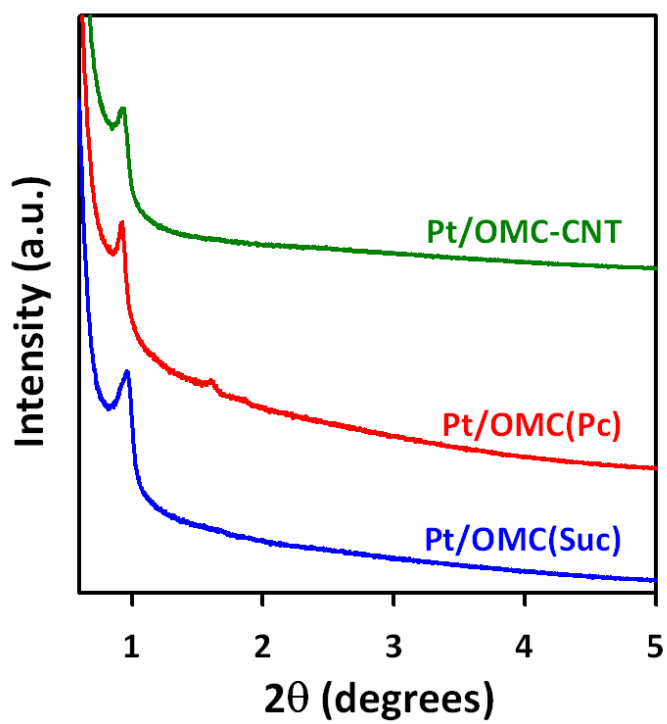
# Ordered Mesoporous Carbon – Carbon Nanotube Nanocomposites as a Highly Conductive and Durable Cathode Catalyst Support for Polymer Electrolyte Fuel Cells

*Jae Yeong Cheon,<sup>a</sup> Chi-Yeong Ahn,<sup>b</sup> Dae Jong You,<sup>c</sup> Chanhok Pak,<sup>c</sup> Seung Hyun Hur,<sup>b</sup> Junbom Kim,<sup>\*b</sup>  
and Sang Hoon Joo<sup>\*a</sup>*

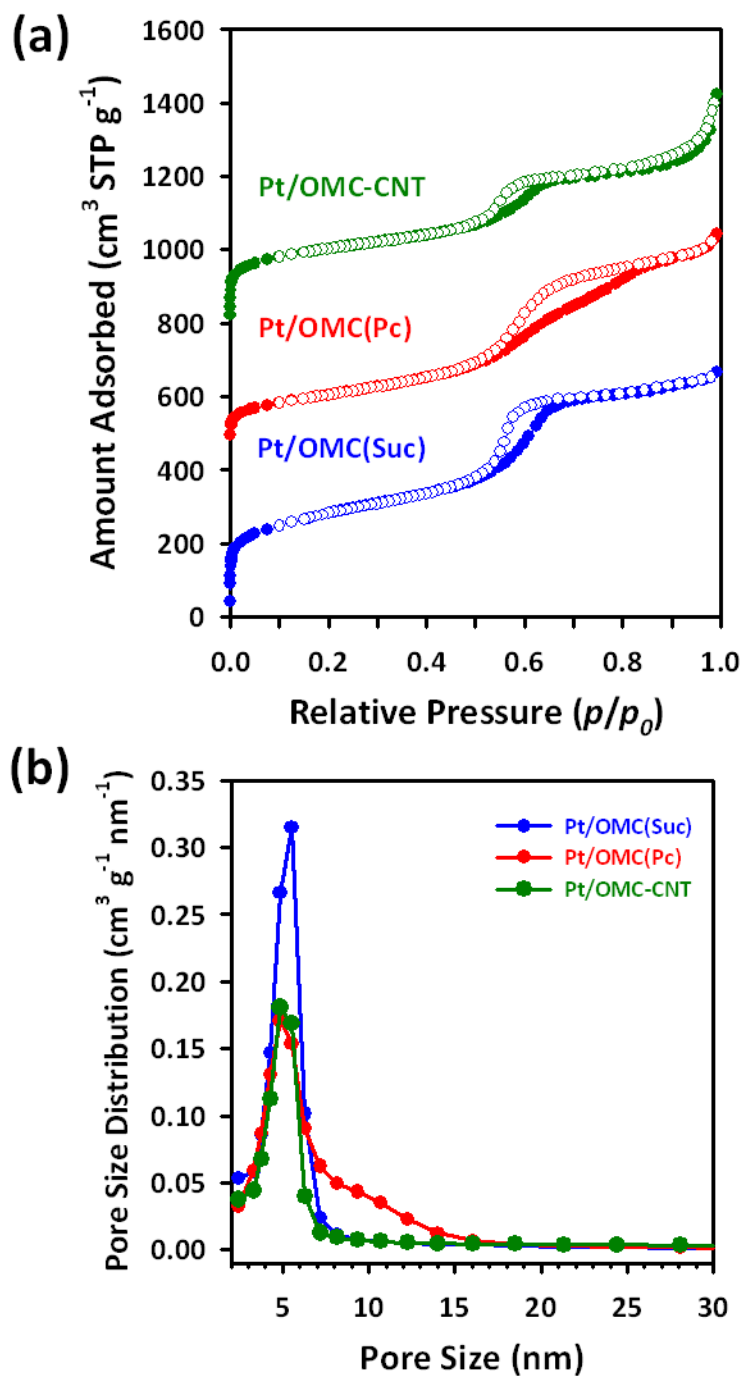
<sup>a</sup>School of Nano-Bioscience and Chemical Engineering, KIER-UNIST Advanced Center for Energy, and Low Dimensional Carbon Materials Center, Ulsan National Institute of Science and Technology (UNIST), UNIST-gil 50, Ulsan 689-798, Republic of Korea. <sup>b</sup>School of Chemical Engineering & Bioengineering, University of Ulsan, Daehak-ro 102, Ulsan 680-749, Republic of Korea, <sup>c</sup>Energy Lab., Samsung Advanced Institute of Technology, Samsung Electronics Co. Ltd., San 14-1, Nongseo-dong, Giheung-gu, Yongin-Si, Gyeonggi-do 446-712, Republic of Korea.



**Fig. S1.** TEM images of the carbon/SBA-15 composite during the preparation of OMC-CNT nanocomposites.



**Fig. S2.** Small-angle XRD patterns of Pt/OMC catalysts.



**Fig. S3.** (a) Nitrogen adsorption-desorption isotherms and (b) corresponding pore size distribution of Pt/OMC catalysts determined by the BJH method.