

Hindawi Publishing Corporation
Journal of Biomedicine and Biotechnology
Volume 2012, Article ID 405842, 10 pages
doi:10.1155/2012/405842

Review Article

Heterologous Expression of Plant Cell Wall Degrading Enzymes for Effective Production of Cellulosic Biofuels

Sang-Kyu Jung,¹ Vinuselvi Parisutham,¹ Seong Hun Jeong,¹ and Sung Kuk Lee^{1,2}

¹ School of Nano-Bioscience and Chemical Engineering, Ulsan National Institute of Science and Technology (UNIST), Ulsan 689-798, Republic of Korea

² School of Urban and Environmental Engineering, Ulsan National Institute of Science and Technology (UNIST), Ulsan 689-798, Republic of Korea

Correspondence should be addressed to Sung Kuk Lee, sklee@unist.ac.kr

Received 24 March 2012; Accepted 20 May 2012

Academic Editor: Shi-You Ding

Copyright © 2012 Sang-Kyu Jung et al. This is an open access article distributed under the Creative Commons Attribution License, which permits unrestricted use, distribution, and reproduction in any medium, provided the original work is properly cited.

A major technical challenge in the cost-effective production of cellulosic biofuel is the need to lower the cost of plant cell wall degrading enzymes (PCDE), which is required for the production of sugars from biomass. Several competitive, low-cost technologies have been developed to produce PCDE in different host organisms such as *Escherichia coli*, *Zymomonas mobilis*, and plant. Selection of an ideal host organism is very important, because each host organism has its own unique features. Synthetic biology-aided tools enable heterologous expression of PCDE in recombinant *E. coli* or *Z. mobilis* and allow successful consolidated bioprocessing (CBP) in these microorganisms. *In-planta* expression provides an opportunity to simplify the process of enzyme production and plant biomass processing and leads to self-deconstruction of plant cell walls. Although the future of currently available technologies is difficult to predict, a complete and viable platform will most likely be available through the integration of the existing approaches with the development of breakthrough technologies.

1. Introduction

For decades, the biological conversion of plant biomass into biofuels has been a major focus of research [1]. Plant biomass is the most abundant renewable carbon source on Earth, with lignocellulose being its major constituent. Lignocellulose is a highly heterogeneous substrate composed of cellulose, hemicellulose, and lignin. Cellulose is a linear polymer of glucose that is extensively bonded to each other through strong intramolecular hydrogen bonds forming a highly recalcitrant and crystalline structure. Hemicellulose is a complex heteropolymer that comprises a number of polysaccharides such as xylan, galactan, and mannan. Hemicellulose contributes to the heterogeneity, whereas cellulose contributes to the recalcitrance of lignocellulose. Lignin comprises aromatic alcohols and is found to be associated with cellulose and hemicellulose. Lignin protects cellulose from hydrolytic enzymes [2]. Conventional approaches to extract the simple sugars in cellulose involve pretreatment under harsh conditions followed by enzymatic saccharification [3–5]. Simple sugars extracted can then be converted

to advanced biofuels that resemble petroleum-based fuels by using recombinant microbes [6].

Biomass hydrolysis remains a unique hurdle and an expensive step in the production of cellulosic fuel. Over the years, emphasis has been placed on the development of inexpensive methodologies to produce hydrolytic enzymes. Cellulolytic microbes isolated from different environmental niches offered various forms of cellulases, and their identification has provided a deeper insight into the mechanism of lignocellulose hydrolysis. Genomic collection has revealed the distribution of a variety of genes encoding hydrolytic enzymes on the chromosome of cellulose-utilizing organisms such as *Trichoderma reesei*, *Acidothermus cellulolyticus*, and *Clostridium cellulovorans* [7–9]. The vast repository of genomic data has confirmed the need to engineer several groups of cellulases (endoglucanase, cellobiohydrolases, exoglucanase, and β -glucosidase) and hemicellulases (xylanase and arabinofuranosidase) with synergistic activity, into a single recombinant host to favor an efficient, single-step hydrolysis of the recalcitrant plant biomass into simple sugars [5]. However, expression of multiple enzymes would

impose a huge metabolic burden on the engineered host [4, 10]. Selection of recombinant hosts with a superior ability to produce higher titers of multiple enzymes is a prerequisite for efficient bioprocessing of cellulosic biomass. The advent of recombinant genetic engineering and synthetic biology has enabled manipulation and development of recombinant plants and microbes that favor an efficient, single-step hydrolysis of lignocellulose [4, 11–13]. Many competing technologies have been developed for heterologous expression of plant cell wall degrading enzymes (PCDEs) coupled with simultaneous bioprocessing of cellulosic biomass in various host organisms (e.g., *Escherichia coli*, fungus, yeast, *Zymomonas mobilis*, and plant). Selection of an ideal host organism is essential because each host organism not only has its own unique features but also has advantages and disadvantages for a specific application. Thus, good understanding of the unique features of each recombinant host organism is imperative for the heterologous expression of PCDEs. To simplify, the consolidated bioprocessing approach involves the use of recombinant microbes such as *E. coli* and *Z. mobilis*, which are capable of hydrolyzing and fermenting plant biomass, whereas an *in-planta* approach employs plants capable of producing PCDEs, thus allowing autodegradation of plant biomass. In this paper, not only will we provide insight into the expression of PCDEs in three different host organisms, *E. coli*, *Z. mobilis*, and plant, but we will also highlight recent advances in the field.

2. Consolidated Bioprocessing

The consolidated bioprocessing (CBP) approach involves engineering cellulolytic ability into major industrially used solventogens such as yeast, *E. coli*, and *Z. mobilis*, to facilitate a single-step conversion of plant biomass to fuels. As described above, multiple enzymes are required to depolymerize plant biomass. In addition to the expression of multiple cellulolytic enzymes, engineering a proper protein-secretion system in recombinant microbes is necessary to favor a high titer of extracellular enzyme. Even if an efficient set of cellulases are engineered together with a proficient protein-secretion system, a proper enzyme-enzyme and/or enzyme-microbe synergy should be established to favor continuous hydrolysis of the substrate [14–16]. Without establishing proper synergy between different enzyme groups, the products obtained would begin to accumulate and lead to the inhibition of further substrate hydrolysis [3, 17]. In addition, hydrolysis of plant biomass is highly favored at a higher temperature, but most recombinant hosts are mesophilic, and this presents an additional hurdle in consolidated bioprocessing [8]. It is necessary to coordinate enzyme production, substrate hydrolysis, and fermentation process within a single cell in such a way that one does not lag behind or exceed the other processes. Aided by the powerful tools offered by synthetic biology, systems biology, structural biology, and protein engineering, efforts are underway to eliminate the above-mentioned bottlenecks and develop efficient microbes for consolidated bioprocessing. With the advent of surface-display technology, yeast became an unconquerable host for cellulase expression. However,

recombinant hosts such as *E. coli* and *Z. mobilis* have recently been considered to have many properties ideal for cellulase expression. In this paper, we will discuss the efforts and hurdles in genetic engineering cellulolytic ability into *E. coli* and *Z. mobilis*. Cellulase expression in yeast is reviewed in depth elsewhere [18].

3. Cellulase Expression and Secretion in *E. coli*

E. coli is one of the most favored industrial microorganisms and has a high potential to become a consolidated bioprocessor owing to the wealth of knowledge available pertaining to this organism that allows for easy genetic manipulation. However, there are some hurdles in the development of *E. coli* with cellulolytic ability. While most native cellulolytic microbes are extremophiles, living either in conditions of high temperature or low pH, *E. coli* is a mesophile, and hence, the cellulase system adopted from extremophiles may not function efficiently in *E. coli*. Some anaerobic mesophiles (*Ruminococcus albus* and *C. cellulovorans*) also possess efficient cellulolytic ability [19]. However, unlike the extremophiles, anaerobic mesophiles produce complex cellulases called cellulosomes [20]. Cellulosome consists of a noncellulolytic scaffolding protein to which free cellulases are assembled with their dockerin domain and the entire assembly is displayed on the cell surface. Native proteases of *E. coli* cleave the dockerin domain of the cellulosomal cellulase, thus, disturbing the assembly process [21]. In addition, the cellulosomal cellulases (e.g., EngB) form inclusion bodies when overexpressed in *E. coli*. Solubilization of these cellulases was enhanced when their dockerin domain was replaced with the cellulose-binding domain (CBD) from a free cellulase [22]. Maximizing the portion of a soluble protein is a key factor for consolidated bioprocessing.

While solubilization of the expressed cellulases is a potent problem, secretion of the soluble cellulases is another major prerequisite for CBP. *E. coli* possess a thick outer membrane and very limited number of secretion systems capable of targeting protein to the extracellular space (Figure 1). As such, this thick outer membrane provides an additional hurdle in engineering a secretable cellulolytic system. Overexpression of a cellulolytic system without engineering a new protein-secretion pathway would probably inhibit cell growth due to obstruction of the native transport pathway [5]. Cellulase from *Bacillus subtilis* was cloned into *E. coli* and detectable extracellular secretion was achieved without any genetic modification; however, a larger proportion of the enzyme was localized in the periplasmic space [23]. The extracellular secretion may have been caused by the signal peptide of the *B. subtilis* cellulase that might have specificity toward native protein secretion system in *E. coli*. However, the localization of a large portion of the protein in the periplasmic space might be because of the differences in the membrane architecture of *B. subtilis* and *E. coli*. Being a Gram-positive bacterium, *B. subtilis* lacks an outer membrane, and hence, the protein-secretion system is simpler and more efficient, whereas *E. coli* possesses a thick outer membrane that restricts extracellular transport of periplasmic proteins (Figure 1). *E. coli* possess an endogenous cellulase that could

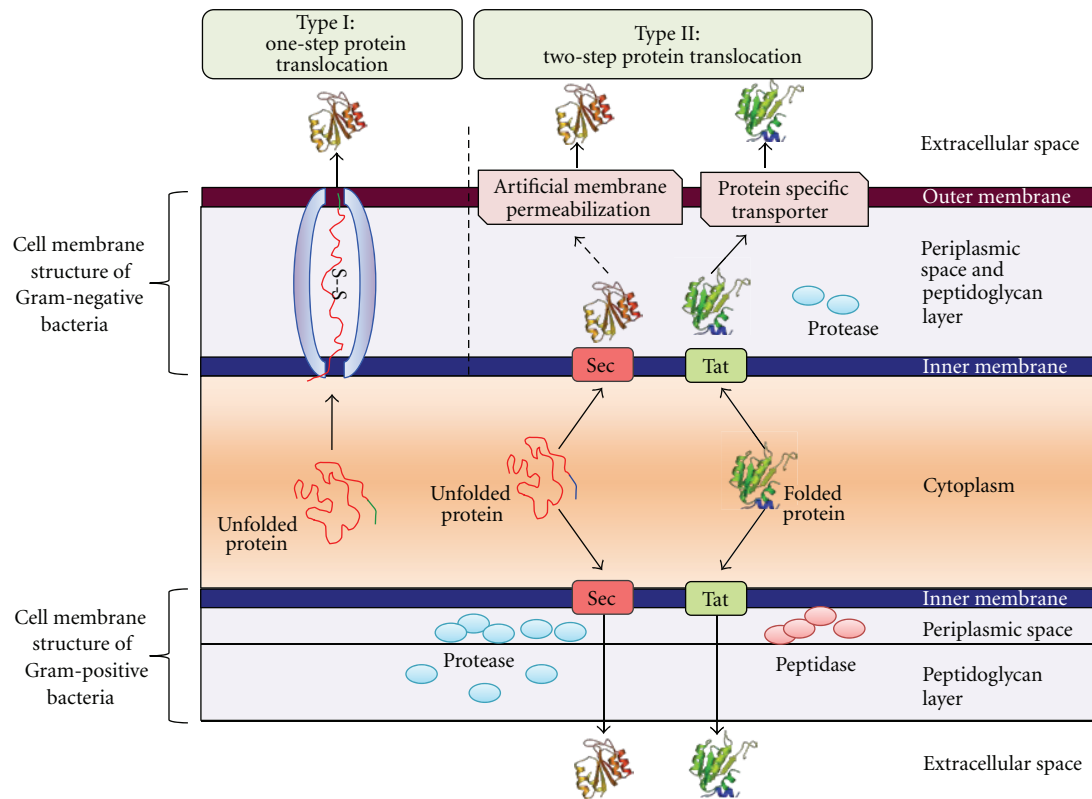


FIGURE 1: Outline of the major difference between the protein secretion system of Gram-positive and Gram-negative bacteria. Presence of thick outer membrane in Gram-negative bacteria demands for outer membrane permeabilization through the addition of mild detergent, *lpp* deletion, or by fusing the recombination protein with *kill* or *out* gene.

be secreted when overexpressed [24]. Fusion of the *out* gene of *Erwinia chrysanthemi* with a gene encoding for endoglucanase facilitated the secretion of more than 50% of the cellulase produced [25]. Exoglucanase from *C. fimi* was efficiently secreted from *E. coli* when fused to *ompA* sequence and expressed under a weak promoter (P_{lacUV5}) [26]. Recombinant cellulase targeted to the periplasmic region could be secreted into the medium in an *lpp*-deleted strain of *E. coli* [27]. Even though cloning and secretion of a few heterologous genes is feasible in *E. coli*, it is not sufficient for CBP of plant biomass mainly because of the lesser substrate specificity of the readily expressible cellulases of *E. coli*.

There was an increased search for a new group of cellulase, which is more specific for plant biomass and is readily expressible in *E. coli*. However, the lack of complete knowledge about the mechanism of cellulase action limits the use of a rational design of cellulase with desired traits for expression in *E. coli*. Metagenomic libraries are considered powerful tools for the isolation of genes with desired properties. The growing repository of metagenomic information promises to provide a better group of cellulase for expression in *E. coli*. Novel cellulases were identified in the metagenomic libraries obtained from the insect gut, termite gut, and cow rumen [28, 29]. The cellulases identified in the cow rumen were screened in *E. coli* and were found to exhibit significant activity against ionic liquid pretreated-plant biomass [30].

The GH5 and GH9 family of cellulases are readily expressible in *E. coli*. The metagenomic library might help identify GH5 and GH9 family of cellulases for *E. coli* [31].

Maintenance of the large heterologous DNA segment is rather complex. Despite the availability of several controllable gene expression systems, expression of multiple genes in a soluble form is technically challenging in *E. coli*. Hence, effort was put forth to identify cellulases with multiple functions. Some hydrolytic enzymes were found to exhibit a significant level of endoglucanase, exoglucanase, and xylanase activity. Cellulase isolated from *Caldocellum saccharolyticum* was found to have an endoglucanase catalytic domain in the C-terminus and exoglucanase catalytic domain in the N-terminus [32]. Cellulase with a multifunctional catalytic domain (performing both endoglucanase and exoglucanase activity) has been isolated from *Bacillus* sp. D04 [33]. Cellulase isolated from *C. cellulovorans* was also capable of functioning as a hemicellulase [34]. A metagenomic repository would be a very useful tool for the isolation of multifunctional cellulase with higher activity at mesophilic conditions.

E. coli is capable of utilizing all monosaccharides that could be obtained from plant biomass [3]. Cellobiose is a dimer of glucose and is the major end-product of cellulose hydrolysis. Accumulated cellobiose inhibits the endo- and exoglucanases, leading to a discontinuity in the overall process. Engineering a cellobiose-uptake system would therefore

be the first step toward CBP, because it would help remove the potential inhibitory compound (cellobiose) immediately after it is formed, thus ensuring a continuous hydrolysis process [35]. The cellobiose metabolic pathway of *Klebsiella oxytoca* was successfully expressed in the ethanol-producing *E. coli* strain KO11, thus, favoring the growth of this strain on cellobiose [36]. Surface display of β -glucosidase of *Thermobifida fusca* in *E. coli* favored direct assimilation of cellooligosaccharides [37]. Cellobiose assimilation was achieved by replacing the promoters of endogenous chitin- (*chb*-) and salicin- (*asc*-) utilizing operons of *E. coli* [35]. Some of the cellobiose-utilizing strains mentioned-above have a superior capability over the glucose-utilizing counterparts to produce significantly higher levels of ethanol when grown on a model sugar substrate [36], while others can cometabolize cellobiose concurrently with sugars such as xylose, galactose, and mannose [38]. Thus, these cellobiose-metabolizing strains could be used as a platform strain in the development of cellulolytic *E. coli*.

Extensive research has helped strengthen the pool of *E. coli* biocatalyst with the superior ability to act on a cellulosic substrate; however, the potential of all of these engineered strains to grow on plant biomass directly could not be proved. This is mainly because of the failure of expression of a complete set of hydrolytic enzymes within a single host. Hence, coculture strategies have been proposed to alleviate the metabolic burden of expressing multiple heterologous genes within a single cell. Binary culture has been employed for efficient xylan degradation. Xylan constitutes the major portion of hemicellulose and requires the concomitant action of six enzymes for its hydrolysis to xylose. Cocultivation of two strains of *E. coli* expressing a different combination of the six major xylanases enhanced ethanol production from the hemicellulosic portion of plant biomass. Coculture of *E. coli* strains capable of expressing either the cellulolytic or hemicellulolytic enzyme complexes allowed growth on switchgrass pretreated with ionic liquid even without the addition of additional hydrolytic enzymes [33]. These coculture strategies are a promising step toward successful development of cellulolytic *E. coli*. The minimal genome approach [39] and tightly controllable/switchable gene expression system are well developed for *E. coli* [40, 41]. Exploitation of these systems to engineer a cellulolytic *E. coli* would provide precise, spatiotemporal modulation of gene expression of multiple cellulases based on the accumulation of products. A combination of the above-mentioned strategies would help overcome the bottlenecks associated with the development of cellulolytic *E. coli*.

4. Heterologous Expression and Secretion of Cellulases in *Z. mobilis*

Zymomonas mobilis is a unique Gram-negative microorganism that can metabolize glucose anaerobically through the Entner-Doudoroff (ED) pathway in contrast to other Gram-negative organisms (e.g., *E. coli*) that utilize the Embden-Meyerhof-Parnas (EMP) pathway. As an important industrial host organism, *Z. mobilis* has several advantages for biofuel applications that include higher sugar-uptake

ability, a lower cellular biomass yield, and a higher ethanol yield/tolerance. Another advantage is that controlled addition/depletion of oxygen is not required during fermentation, as *Z. mobilis* can grow microaerobically. However, the limitation of this bacterium is that it can utilize only three sugar substrates: glucose, fructose, and sucrose. For expanding the substrate range, especially for the utilization of plant biomass-derived polymers, several PCDE genes have been cloned and expressed in *Z. mobilis*. However, similar to other Gram-negative bacteria such as *E. coli*, the presence of an outer membrane results in inefficient protein secretion, which is a major technical challenge in engineering cellulolytic *Z. mobilis* (Figure 1).

Previous reports on heterologous expression of PCDE genes in *Z. mobilis* are summarized (Table 1). Endoglucanase genes such as *eglX* [48], CMCCase [43, 45], and *celZ* [46] were expressed in *Z. mobilis* under the control of either the chloramphenicol acyltransferase (*cat*) promoter [48] or their native promoters [43, 45, 46]. In the case of *A. xylinum* endoglucanase, approximately 75% of the endoglucanase activity was found in the periplasmic space in recombinant *Z. mobilis* with no detectable activity in the extracellular fraction. None of the above-described endoglucanases transformed to *Z. mobilis* could be secreted, mainly because of the protective outer membrane [45, 48]. In contrast, approximately 35% of the endoglucanase *celZ* from *E. chrysanthemi* was released into the medium in the absence of detectable cell lysis [46]. This probably occurred because of the correct recognition of the secretion signal of *E. chrysanthemi* by *Z. mobilis*. However, whether the secretion observed was due to active secretion or an increased leakiness of the outer membrane at the end of the growth phase was unclear [46]. The β -glucosidase gene from *Xanthomonas albilineans* or *Ruminococcus albus* was also expressed in *Z. mobilis* [50, 51]. Yanase et al. expressed a β -glucosidase gene from *R. albus* fused with the Tat (twin arginine translocation) signal peptide of a periplasmic enzyme, glucose-fructose oxidoreductase (Gfo), or Sec-dependent secretion signal peptide of gluconolactonase (Gln) [50]. They found that the enzyme thus produced was secreted into both the periplasmic and extracellular space. With the use of Tat and Sec signal peptides, 4.7% and 11.2% of the β -glucosidase activity, respectively, were detected in the extracellular space of the recombinant *Z. mobilis* [50]. However, these genes could not support the growth of recombinant *Z. mobilis* on cellobiose as the sole carbon source.

For the hydrolysis of plant biomass, it is desirable to express multiple PCDE genes in *Z. mobilis*. Linger et al. heterologously expressed two cellulolytic enzymes, E1 (endo- β -1,4-glucanase) and GH12 (broad substrate range endo- β -1,4-glucanase activity) from an *Acidothermus* species by using two different secretion signals of *Z. mobilis* genes: *phoC* gene and ORFZM0331 [42]. The lack of a secretion signal in their genes resulted in the localization of 96% of GH12 activity within the cytoplasm, whereas the addition of the *phoC* secretion signal resulted in the localization of approximately 26% of the enzyme activity in the periplasmic space and 13% in the extracellular space. For E1 with the *PhoC* secretion signal, approximately 20% of the E1 activity

TABLE 1: Summary of expression of plant cell wall degrading enzymes in *Z. mobilis*.

PCDE	Source organism	Gene Bank ID	M.W (kDa)	Promoter	Secretion signal peptide	Extracellular portion (%)	Periplasmic portion (%)	Reference
Endo- β -1,4-glucanase	<i>A. cellulolyticus</i>	AAA75477.1	60.7	P_{tac}	<i>Z. mobilis</i> PhoC	~20%	~30%	[42]
	<i>A. cellulolyticus</i>	AAA75477.1	60.7	P_{tac}	<i>Z. mobilis</i> ORF ZM 0331	~15%	~25%	[42]
	<i>A. cellulolyticus</i>	ABK52392.1	41.3	P_{tac}	<i>Z. mobilis</i> PhoC	13%	26%	[42]
	<i>A. xylinum</i>	BAA03797.1	24	Native	Native	<1%	75%	[43]
	<i>B. subtilis</i>	NA	NA	Native	Native	NA	NA	[44]
	<i>C. uda</i> CB4	AAA23090.1	40.7	<i>Z. mobilis</i> unidentified gene	Native	NA	NA	[45]
	<i>E. chrysanthemi</i>	CAA68604.1	46.4	Native	Native	~40%	~80%	[46]
	<i>E. cloacae</i>	ABP62583.1	40.3	Native	Native	~7.6%	ND	[47]
	<i>P. cellulosa</i>	NA	NA	cat^* gene on pSUP104	Native	NA	NA	[48]
	<i>X. albilineans</i>	NA	NA	Native	Native	NA	NA	[49]
β -Glucosidase	<i>R. albus</i>	CAA33461.1	104.2	<i>Z. mobilis</i> gfo gene	<i>Z. mobilis</i> Gfo	4.7%	61%	[50]
	<i>R. albus</i>	CAA33461.1	104.2	P_{tac}	<i>Z. mobilis</i> Gln	11.2%	34.3%	[50]
	<i>X. albilineans</i>	NA	NA	Native	Native	NA	NA	[49, 51]

* Chloramphenicol acyltransferase; NA: not available; ND: not detected.

was found in the extracellular medium, 30% in periplasmic space, and 50% in cytoplasm [42]. To develop *Z. mobilis* as a viable platform host organism for cellulosic biofuel production, more studies are needed to engineer *Z. mobilis* that secretes multiple PCDEs into the extracellular space necessary for the degradation of plant biomass.

5. Plant-Based Expression of Plant Cell Wall Degrading Enzymes

In-planta expression of PCDEs has several advantages over other expression systems (e.g., *E. coli*, fungus, and yeast) as a means of cost-effective production of cellulosic biofuels. Since plants can serve as both a host organism and a cellulosic biomass substrate for sugar fermentation, expression of PCDEs in plants can lead to self-deconstruction of plant cell walls to generate monomeric sugars. A combination of this approach with synthetic cellulolytic microbes would dramatically improve the economic efficiency of the cellulosic biofuel process (Figure 2). This is because the high production of multiple PCDEs in nonnative cellulolytic and industrial microbes imposes a huge metabolic burden that results in decreased biofuel production, whereas an *in-planta* approach would favor self-hydrolysable substrate that would reduce the metabolic cost of expression of multiple PCDEs in cellulolytic microbes. Thus, *in-planta* hydrolysis of plant cells offers a great opportunity to simplify the process of enzyme/biomass production and hydrolysis and minimizes the overall enzyme production cost without requiring the use of expensive bioreactors or complicated purification processes. Moreover, plants are also capable of posttranslational modifications, which may be required for correct protein folding and thus the functionality of specific

enzymes [52, 53]. For these reasons, the expression of PCDEs in a plant is gaining increasing popularity. In this paper, we give a brief outline of the new updates on recent publications as well as on many factors to consider in this approach (Table 2). For example, autohydrolysis of plant cells can be avoided by introduction of thermostable cellulase, which has negligible enzyme activity at room temperature. An excellent summary on former studies can be found in previous review papers [53–55].

Heterologous genes can be expressed stably in transgenic plants or transiently in wildtype plants. Most early studies have focused on the generation of stable transformants wherein foreign genes were integrated into plant chromosome or chloroplast genome. Once transgenic plant lines are developed, minimal efforts are needed for the production of the enzymes, since expressed enzymes accumulate in plant organs such as leaves or stems while the plants grow. Alternatively, PCDEs can be transiently produced in plants via *Agrobacterium-tumefaciens*-mediated transient expression. Compared with stable transformation, the use of a detached wildtype plant as a host for transient expression is advantageous, since it minimizes the environmental impact of genetically modified (GM) crops. In addition, *A. tumefaciens*-treated plants can produce enzymes for a period of several days [56]. It is assumed that most works reviewed in this paper were performed using transgenic plants unless otherwise specified as there are a very few reports on the transient expression of PCDEs.

For expression of PCDEs, careful selections of host plants, target genes, and expression vectors are essential not only to obtain high-level gene expression but also to reduce the cost of enzyme production, and facilitate pretreatment and hydrolysis of biomass. Along with a few different

TABLE 2: Factors to consider in plant-based expression of plant cell wall degrading enzymes.

Category	Exemplary factors associated with a common strategy
Expression type	Selection between stable transformation in a transgenic plant and transient expression in a wildtype plant
Host plant	Composition of biomass Ease of DNA cloning Productivity of a plant crop Selection between monocot and dicot plants
Gene	Development of fusion protein Function and properties of enzyme for example, <i>Thermal stability</i> Subcellular protein localization using transit peptide Synthetic gene design for example, <i>Codon/UTR optimization</i> Use of plant cell wall modifying enzyme
Expression vector	Development of viral expression system for transient gene expression Easy selection markers for stably transformed plants Optimal promoter RBS optimization for example, <i>Kozak's context sequence for monocot</i> Selection between constitutive and inducible systems
Functional analysis	Change of enzyme stability with time Cleavage of holoenzyme for example, <i>Truncated enzyme</i> Comparison of plant produced enzyme with <i>E. coli</i> produced enzyme Effect of plant crude extract on enzyme stability Expression of multiple enzymes Microscopic analysis of protein localization Physical properties for example, <i>Activity optima, thermal stability</i> Posttranslational modification for example, <i>Glycosylation</i> Purification process
Phenotype analysis of transgenic plant	Compositional and structural change in transgenic plant Deleterious phenotype change for example, <i>Fertile, pale leaves</i> Location of protein accumulation for example, <i>High level accumulation in leaf or stem</i> New beneficial traits for example, <i>Resistance to pathogens</i>
Biomass hydrolysis	Application of enzyme cocktails Composition and property of cellulosic biomass Induction of <i>in-planta</i> hydrolysis Optimal combination of enzymes Resistance of enzymes to pretreatment process

common dicot plants such as tobacco [57–60], and *Ara-bidopsis* [61], a few monocot plants such as sugar cane [62], maize [63, 64], rice [65], and duckweed [66] have been used for the expression of cellobiohydrolase CBH1/CBH2 [62, 63], endoglucanase [57, 60, 62, 63, 67], exoglucanase [60, 67], β -glucosidase [60, 67], xylanase [59, 61, 67], β -mannanase [9], pectate lyases [67], and cutinase [67]. Considering productivity of plant crops in pounds per acre, some popular biofuel monocots, such as *Miscanthus* and switchgrass, can be a promising host for *in-planta* expression of cellulases. However, to date, no reports on *in-planta* expression in biofuel monocotyledons has been published. To avoid self-deconstruction by the expressed PCDEs during growth and to produce highly stable enzymes, thermophilic or hyperthermophilic enzymes are commonly produced in plants [9, 57, 58, 60, 61, 63, 64, 66, 67]. This is perhaps one of the biggest differences when compared with cellulase expression in *E. coli* or *Z. mobilis*.

For development of expression vectors, the CaMV (cauliflower mosaic virus) 35S promoter has commonly been

used. However, the use of an enhanced 35S promoter with 5' tobacco etch virus-derived untranslated leader [58] and maize *pepC* promoter [62] has been reported. To enhance heterologous expression of bacterial or fungal genes in plant, codon optimized synthetic genes might be considered [61, 63]. As an alternative to nuclear integration of genes, overexpression was achieved when an expression cassette was integrated into the chloroplast genome [9, 60, 67].

To increase the level of protein accumulation or maintain high enzyme activity, a commonly adopted approach might be protein subcellular localization by incorporation of a transit peptide into a gene construct. Harrison et al. obtained a higher level of cellobiohydrolase and endoglucanase accumulation when they were fused to a vacuole-sorting determinant rather than an ER retention signal peptide, and the highest level of the endoglucanase was achieved when targeted to chloroplasts [62]. Kim et al. examined three different sources of chloroplast targeting transit peptides such as the light-harvesting chlorophyll a/b-binding protein, Rubisco small subunit (RS), and Rubisco activase. They

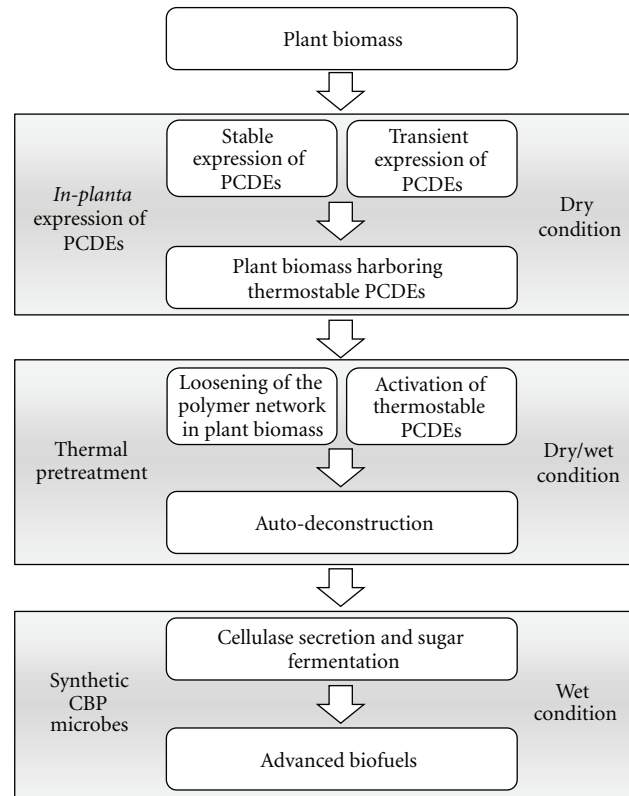


FIGURE 2: The combination of *in-planta* expression of PCDEs and synthetic CBP cellulolytic microbes can provide effective production of cellulosic biofuels.

found that the RS signal peptide favored the highest level of accumulation of cellulase, Cel5A, in transgenic tobacco plants [57]. Jiang et al. directly compared three different subcellular locations of endoglucanase, E2. They achieved the highest enzyme activity when E2 was directed to apoplast by using CLASP (tobacco calreticulin signal peptide) and the lowest enzyme activity from the cytosolic E2 [58]. The study by Hood et al. also supported the idea that protein subcellular localization is a key condition that determines protein accumulation level [63]. The highest endoglucanase E1 accumulation was observed when E1 was targeted to the ER or vacuoles; on the other hand, the activity of CBH I was not detected when it was targeted to vacuole.

Despite successful demonstrations of the subcellular targeting approach, further investigations are needed to determine the best subcellular organs or plant compartments especially when PCDEs are expressed in a senescing plant where proteolytic activity is high and cellular constituents are remobilized. If a large portion of harvested plant biomass is already senesced, high-level accumulation of PCDEs in the senesced plant or even in dead woody parts of plant biomass could be achieved. It is interesting that when the barley α -amylase signal peptide was used to direct xylanase to apoplast, the highest accumulation of xylanase was found in dried stems [61]. As an alternative, Hood et al. expressed thermostable cellulase enzymes in maize seed [63] and

Llop-Tous et al. reported a new approach for the production of insoluble aggregates of active xylanase by incorporation of a proline-rich domain of the maize-storage protein into the xylanase-coding sequence [59]. Meanwhile, typical protein accumulation levels of various enzymes in plants ranged between 0.001% and 26% in total soluble protein [53].

While expressing PCDEs, transgenic plants still tended to show a normal phenotype and traits. This might be because of the expression of thermostable enzymes, which are inactive at room temperature or because the enzymes were localized in safe subcellular organs or spaces, and the protein accumulation levels were not sufficient to cause self-deconstruction. Kim et al. reported no changes in phenotype in transgenic tobacco plants expressing Cel5A [57], and Verma et al. observed normal phenotype of *Arabidopsis* lines expressing CelD, PelB, or PelD [67]. Xylanase-expressing *Arabidopsis* did not show any deleterious effects on phenotype when compared with wildtype plants [61]. In contrast, transplastomic tobacco plants expressing PCDEs from the chloroplast genome showed a mild phenotypic change in leaf color [9]. Significant phenotypic changes, such as poor plant growth and severe pigment deficiency, were more obvious in homoplasmic plants than in heteroplasmic plants [60]. Interestingly, expression of PCDEs may confer beneficial traits in transgenic plants. For instance, the expression of pectate lyase in tobacco plants improved bacterial resistance

to pathogenic *E. carotovora* probably through induction of protective immune response in plants [67].

With respect to the properties of heterologous enzymes, as plants can process posttranslational modifications, apparent molecular masses of enzymes can be increased probably because of glycosylation and other posttranslational modifications [59, 62]. If a PCDE has multiple domains such as carbohydrate-binding domain (CBD), linker peptide, and catalytic domain, the linker peptide can be cleaved from the holoenzyme depending on the type of enzyme, host plant, and expression method. Harrison et al. reported a decrease in the apparent molecular weights of the expressed CBH I and CBH II in transgenic sugarcane; on the other hand, bacterial EG, which has a monodomain without a CBD, showed the expected molecular mass [62]. Interestingly, PCDEs produced by plants tended to show stability at higher temperature and pH than did those produced by *E. coli*. Verma et al. directly compared enzyme stability between *E. coli*- and plant-chloroplast-derived PelB, PelD, CelD, and β -mannanase enzymes at different pH and temperatures. They found that chloroplast-derived enzymes exhibited better stability than *E. coli*-derived enzymes did [9, 67]. They also showed that when *E. coli* crude extract containing cell-wall-degrading enzyme was directly loaded in a reaction medium, a high protein concentration reduced enzyme activity; on the other hand, plant extract did not show a reduction in enzyme activity at high protein loading [67].

Since cellulose pretreatment at high temperature allows easy mixing, better substrate solubility, high mass transfer rate, and lowered risk of contamination, the use of plant-expressing thermostable cellulases in cellulosic biofuel production is a promising approach. In addition, due to high temperature and self-deconstruction, *in-planta* expression helps easy access of externally added catalyst (PCDEs) to inside of plant biomass by loosening cross-linked wall polymers where difficult diffusion has been a significant bottleneck during pretreatment and conversion of lignocellulose to simple sugars. Thus, it may be a good combination between plant-based expression and synthetic CBP for synergistic effect on the production of advanced biofuel (Figure 2).

6. Conclusion

For efficient biofuel production, the expression of plant cell wall degrading enzymes in a host organism requires extensive coupling with bioprocessing of cellulosic biomass. Although diverse strategies depending on the unique feature of each host organism or expression system are available, as previously described, they all aim to achieve the same goal: a high-level production of multiple cellulase enzymes and simultaneous hydrolysis and fermentation of cellulosic biomass. At the present time, the future of currently available competing technologies is difficult to predict; moreover, the most efficient host organism among *E. coli*, *Z. mobilis*, fungus, and plant is difficult to determine. However, it is likely that a viable platform will be generated through the integration of multiple existing and future technologies.

Authors' Contributions

S-K. Jung, V. Parisutham and S. H. Jeong are equally contributed to this work.

Acknowledgments

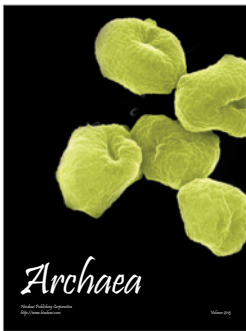
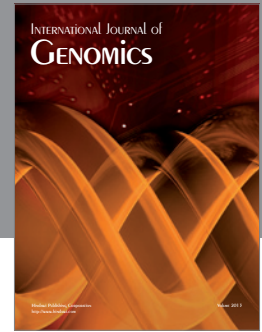
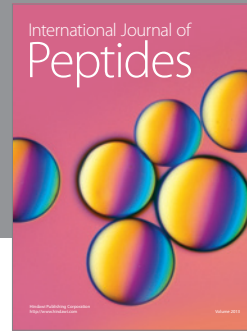
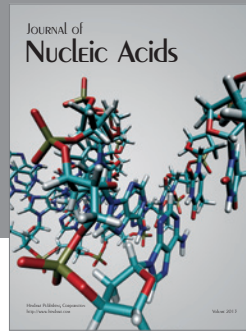
This work was supported by the National Research Foundation of Korea (NRF) through Grants funded by the Ministry of Education, Science and Technology (MEST) (NRF-2009-C1AAA001-2009-0093479, NRF-2009-0076912, NRF-2010-0006436, R32-2008-000-20054-0), by the Intelligent Synthetic Biology Center of Global Frontier Project funded by the MEST (2011-0031948), by a Grant from the Next-Generation BioGreen 21 Program (SSAC, Grant no.: PJ0099058), Rural Development Administration, Republic of Korea, and by UNIST (Ulsan National Institute of Science and Technology) research grant.

References

- [1] S. K. Lee, H. Chou, T. S. Ham, T. S. Lee, and J. D. Keasling, "Metabolic engineering of microorganisms for biofuels production: from bugs to synthetic biology to fuels," *Current Opinion in Biotechnology*, vol. 19, no. 6, pp. 556–563, 2008.
- [2] H. Sakuragi, K. Kuroda, and M. Ueda, "Molecular breeding of advanced microorganisms for biofuel production," *Journal of Biomedicine and Biotechnology*, vol. 2011, Article ID 416931, 11 pages, 2011.
- [3] P. Vinuselvi, J. M. Park, J. M. Lee, K. Oh, C. M. Ghim, and S. K. Lee, "Engineering microorganisms for biofuel production," *Biofuels*, vol. 2, no. 2, pp. 153–166, 2011.
- [4] Q. Xu, A. Singh, and M. E. Himmel, "Perspectives and new directions for the production of bioethanol using consolidated bioprocessing of lignocellulose," *Current Opinion in Biotechnology*, vol. 20, no. 3, pp. 364–371, 2009.
- [5] R. Mazzoli, C. Lamberti, and E. Pessione, "Engineering new metabolic capabilities in bacteria: lessons from recombinant cellulosic strategies," *Trends in Biotechnology*, vol. 30, no. 2, pp. 111–119, 2012.
- [6] E. J. Steen, Y. Kang, G. Bokinsky et al., "Microbial production of fatty-acid-derived fuels and chemicals from plant biomass," *Nature*, vol. 463, no. 7280, pp. 559–562, 2010.
- [7] E. M. Rubin, "Genomics of cellulosic biofuels," *Nature*, vol. 454, no. 7206, pp. 841–845, 2008.
- [8] D. B. Wilson, "Cellulases and biofuels," *Current Opinion in Biotechnology*, vol. 20, no. 3, pp. 295–299, 2009.
- [9] P. Agrawal, D. Verma, and H. Daniell, "Expression of *Trichoderma reesei* β -mannanase in tobacco chloroplasts and its utilization in lignocellulosic woody biomass hydrolysis," *PLoS ONE*, vol. 6, no. 12, Article ID e29302, 2011.
- [10] H. Alper and G. Stephanopoulos, "Engineering for biofuels: exploiting innate microbial capacity or importing biosynthetic potential?" *Nature Reviews Microbiology*, vol. 7, no. 10, pp. 715–723, 2009.
- [11] C. M. Ghim, T. Kim, R. J. Mitchell, and S. K. Lee, "Synthetic biology for biofuels: building designer microbes from the scratch," *Biotechnology and Bioprocess Engineering*, vol. 15, no. 1, pp. 11–21, 2010.
- [12] L. R. Lynd, W. H. Van Zyl, J. E. McBride, and M. Laser, "Consolidated bioprocessing of cellulosic biomass: an update,"

- Current Opinion in Biotechnology*, vol. 16, no. 5, pp. 577–583, 2005.
- [13] M. E. Himmel, S. Y. Ding, D. K. Johnson et al., “Biomass recalcitrance: engineering plants and enzymes for biofuels production,” *Science*, vol. 315, no. 5813, pp. 804–807, 2007.
- [14] M. Maki, K. T. Leung, and W. Qin, “The prospects of cellulase-producing bacteria for the bioconversion of lignocellulosic biomass,” *International Journal of Biological Sciences*, vol. 5, no. 5, pp. 500–516, 2009.
- [15] D. B. Wilson, “Three microbial strategies for plant cell wall degradation,” *Annals of the New York Academy of Sciences*, vol. 1125, pp. 289–297, 2008.
- [16] F. Wen, N. U. Nair, and H. Zhao, “Protein engineering in designing tailored enzymes and microorganisms for biofuels production,” *Current Opinion in Biotechnology*, vol. 20, no. 4, pp. 412–419, 2009.
- [17] C. E. French, “Synthetic biology and biomass conversion: a match made in heaven?” *Journal of the Royal Society Interface*, vol. 6, no. 4, pp. S547–S558, 2009.
- [18] W. H. Van Zyl, L. R. Lynd, R. Den Haan, and J. E. McBride, “Consolidated bioprocessing for bioethanol production using *Saccharomyces cerevisiae*,” *Advances in Biochemical Engineering/Biotechnology*, vol. 108, pp. 205–235, 2007.
- [19] R. H. Doi, “Cellulases of mesophilic microorganisms: cellulose and noncellulosome producers,” *Annals of the New York Academy of Sciences*, vol. 1125, pp. 267–279, 2008.
- [20] R. H. Doi and A. Kosugi, “Cellulosomes: plant-cell-wall-degrading enzyme complexes,” *Nature Reviews Microbiology*, vol. 2, no. 7, pp. 541–551, 2004.
- [21] K. Murashima, A. Kosugi, and R. H. Doi, “Synergistic effects on crystalline cellulose degradation between cellulosomal cellulases from *Clostridium cellulovorans*,” *Journal of Bacteriology*, vol. 184, no. 18, pp. 5088–5095, 2002.
- [22] K. Murashima, A. Kosugi, and R. H. Doi, “Solubilization of cellulosomal cellulases by fusion with cellulose-binding domain of noncellulosomal cellulase EngD from *Clostridium cellulovorans*,” *Proteins*, vol. 50, no. 4, pp. 620–628, 2003.
- [23] E. Hinchliffe, “Cloning and expression of a *Bacillus subtilis* endo-1,3-1,4- β -D-glucanase gene in *Escherichia coli* K12,” *Journal of General Microbiology*, vol. 130, no. 5, pp. 1285–1291, 1984.
- [24] Y. W. Park and H. D. Yun, “Cloning of the *Escherichia coli* endo-1,4-D-glucanase gene and identification of its product,” *Molecular and General Genetics*, vol. 261, no. 2, pp. 236–241, 1999.
- [25] S. Zhou, L. P. Yomano, A. Z. Saleh, F. C. Davis, H. C. Aldrich, and L. O. Ingram, “Enhancement of expression and apparent secretion of *Erwinia chrysanthemi* endoglucanase (encoded by *celZ*) in *Escherichia coli* B,” *Applied and Environmental Microbiology*, vol. 65, no. 6, pp. 2439–2445, 1999.
- [26] T. L. Lam, R. S. C. Wong, and W. K. R. Wong, “Enhancement of extracellular production of a *Cellulomonas fimi* exoglucanase in *Escherichia coli* by the reduction of promoter strength,” *Enzyme and Microbial Technology*, vol. 20, no. 7, pp. 482–488, 1997.
- [27] H. D. Shin and R. R. Chen, “Extracellular recombinant protein production from an *Escherichia coli lpp* deletion mutant,” *Biotechnology and Bioengineering*, vol. 101, no. 6, pp. 1288–1296, 2008.
- [28] M. Wenzel, I. Schönig, M. Berchtold, P. Kämpfer, and H. König, “Aerobic and facultatively anaerobic cellulolytic bacteria from the gut of the termite *Zootermopsis angusticollis*,” *Journal of Applied Microbiology*, vol. 92, no. 1, pp. 32–40, 2002.
- [29] Z. Fang, W. Fang, J. Liu et al., “Cloning and characterization of a β -glucosidase from marine microbial metagenome with excellent glucose tolerance,” *Journal of Microbiology and Biotechnology*, vol. 20, no. 9, pp. 1351–1358, 2010.
- [30] M. Hess, A. Sczyrba, R. Egan et al., “Metagenomic discovery of biomass-degrading genes and genomes from cow rumen,” *Science*, vol. 331, no. 6016, pp. 463–467, 2011.
- [31] C. J. Duan and J. X. Feng, “Mining metagenomes for novel cellulase genes,” *Biotechnology Letters*, vol. 32, no. 12, pp. 1765–1775, 2010.
- [32] D. J. Saul, L. C. Williams, R. A. Grayling, L. W. Chamley, D. R. Love, and P. L. Bergquist, “*celB*, a gene coding for a bifunctional cellulase from the extreme thermophile “*Caldocellum saccharolyticum*”,” *Applied and Environmental Microbiology*, vol. 56, no. 10, pp. 3117–3124, 1990.
- [33] G. Bokinsky, P. P. Peralta-Yahya, A. George et al., “Synthesis of three advanced biofuels from ionic liquid-pretreated switchgrass using engineered *Escherichia coli*,” *Proceedings of the National Academy of Sciences of the United States of America*, vol. 108, no. 50, pp. 19949–19954, 2011.
- [34] F. C. F. Foong and R. H. Doi, “Characterization and comparison of *Clostridium cellulovorans* endoglucanases-xylanases EngB and EngD hyperexpressed in *Escherichia coli*,” *Journal of Bacteriology*, vol. 174, no. 4, pp. 1403–1409, 1992.
- [35] P. Vinuselvi and S. K. Lee, “Engineering *Escherichia coli* for efficient cellobiose utilization,” *Applied Microbiology and Biotechnology*, vol. 92, no. 1, pp. 125–132, 2011.
- [36] M. C. Edwards, E. D. Henriksen, L. P. Yomano et al., “Addition of genes for cellobiase and pectinolytic activity in *Escherichia coli* for fuel ethanol production from pectin-rich lignocellulosic biomass,” *Applied and Environmental Microbiology*, vol. 77, no. 15, pp. 5184–5191, 2011.
- [37] T. Tanaka, H. Kawabata, C. Ogino, and A. Kondo, “Creation of a cellooligosaccharide-assimilating *Escherichia coli* strain by displaying active beta-glucosidase on the cell surface via a novel anchor protein,” *Applied and Environmental Microbiology*, vol. 77, no. 17, pp. 6265–6270, 2011.
- [38] P. Vinuselvi and S. K. Lee, “Engineered *Escherichia coli* capable of co-utilization of cellobiose and xylose,” *Enzyme and Microbial Technology*, vol. 50, no. 1, pp. 1–4, 2012.
- [39] C. T. Trinh, P. Unrean, and F. Srienc, “Minimal *Escherichia coli* cell for the most efficient production of ethanol from hexoses and pentoses,” *Applied and Environmental Microbiology*, vol. 74, no. 12, pp. 3634–3643, 2008.
- [40] L. M. Guzman, D. Belin, M. J. Carson, and J. Beckwith, “Tight regulation, modulation, and high-level expression by vectors containing the arabinose P_{BAD} promoter,” *Journal of Bacteriology*, vol. 177, no. 14, pp. 4121–4130, 1995.
- [41] T. S. Ham, S. K. Lee, J. D. Keasling, and A. P. Arkin, “A tightly regulated inducible expression system utilizing the *fim* inversion recombination switch,” *Biotechnology and Bioengineering*, vol. 94, no. 1, pp. 1–4, 2006.
- [42] J. G. Linger, W. S. Adney, and A. Darzins, “Heterologous expression and extracellular secretion of cellulolytic enzymes by *Zymomonas mobilis*,” *Applied and Environmental Microbiology*, vol. 76, no. 19, pp. 6360–6369, 2010.
- [43] T. Okamoto, S. Yamano, H. Ikeaga, and K. Nakamura, “Cloning of the *Acetobacter xylinum* cellulase gene and its expression in *Escherichia coli* and *Zymomonas mobilis*,” *Applied Microbiology and Biotechnology*, vol. 42, no. 4, pp. 563–568, 1994.
- [44] K. H. Yoon, S. H. Park, and M. Y. Pack, “Transfer of *Bacillus subtilis* endo- β -1,4-glucanase gene into *Zymomonas anaerobia*,” *Biotechnology Letters*, vol. 10, no. 3, pp. 213–216, 1988.

- [45] N. Misawa, T. Okamoto, and K. Nakamura, "Expression of a cellulase gene in *Zymomonas mobilis*," *Journal of Biotechnology*, vol. 7, no. 3, pp. 167–177, 1988.
- [46] N. Brestic-Goachet, P. Gunasekaran, B. Cami et al., "Transfer and expression of an *Erwinia chrysanthemi* cellulase gene in *Zymomonas mobilis*," *Journal of General Microbiology*, vol. 135, no. 4, pp. 893–902, 1989.
- [47] P. Thirumalai Vasani, P. Sobana Piriya, D. Immanuel Gilwax Prabhu, and S. John Vennison, "Cellulosic ethanol production by *Zymomonas mobilis* harboring an endoglucanase gene from *Enterobacter cloacae*," *Bioresource Technology*, vol. 102, no. 3, pp. 2585–2589, 2011.
- [48] A. Lejeune, D. E. Eveleigh, and C. Colson, "Expression of an endoglucanase gene of *Pseudomonas fluorescens* var. *cellulosa* in *Zymomonas mobilis*," *FEMS Microbiology Letters*, vol. 49, no. 3, pp. 363–366, 1988.
- [49] P. Su, C. Q. Liu, R. J. Lucas, S. F. Delaney, and N. W. Dunn, "Simultaneous expression of genes encoding endoglucanase and β -glucosidase in *Zymomonas mobilis*," *Biotechnology Letters*, vol. 15, no. 9, pp. 979–984, 1993.
- [50] H. Yanase, K. Nozaki, and K. Okamoto, "Ethanol production from cellulosic materials by genetically engineered *Zymomonas mobilis*," *Biotechnology Letters*, vol. 27, no. 4, pp. 259–263, 2005.
- [51] P. Su, S. F. Delaney, and P. L. Rogers, "Cloning and expression of a β -glucosidase gene from *Xanthomonas albilineans* in *Escherichia coli* and *Zymomonas mobilis*," *Journal of Biotechnology*, vol. 9, no. 2, pp. 139–152, 1989.
- [52] V. Gomord and L. Faye, "Posttranslational modification of therapeutic proteins in plants," *Current Opinion in Plant Biology*, vol. 7, no. 2, pp. 171–181, 2004.
- [53] L. E. Taylor, Z. Dai, S. R. Decker et al., "Heterologous expression of glycosyl hydrolases in plants: a new departure for biofuels," *Trends in Biotechnology*, vol. 26, no. 8, pp. 413–424, 2008.
- [54] M. B. Sticklen, "Retraction: plant genetic engineering for biofuel production: towards affordable cellulosic ethanol," *Nature Reviews*, vol. 11, no. 4, p. 308, 2010.
- [55] M. B. Sainz, "Commercial cellulosic ethanol: the role of plant-expressed enzymes," *In Vitro Cellular and Developmental Biology*, vol. 45, no. 3, pp. 314–329, 2009.
- [56] L. D. Joh and J. S. VanderGheynst, "Agroinfiltration of plant tissues for production of high-value recombinant proteins: an alternative to production in transgenic crops," *Journal of the Science of Food and Agriculture*, vol. 86, no. 13, pp. 2002–2004, 2006.
- [57] S. Kim, D. S. Lee, I. S. Choi, S. J. Ahn, Y. H. Kim, and H. J. Bae, "*Arabidopsis thaliana* Rubisco small subunit transit peptide increases the accumulation of *Thermotoga maritima* endoglucanase Cel5A in chloroplasts of transgenic tobacco plants," *Transgenic Research*, vol. 19, no. 3, pp. 489–497, 2010.
- [58] X. Jiang, X. Zhou, W. Jiang, X. Gao, and W. Li, "Expressions of thermostable bacterial cellulases in tobacco plant," *Biotechnology Letters*, vol. 33, no. 9, pp. 1797–1803, 2011.
- [59] I. Llop-Tous, M. Ortiz, M. Torrent, and M. D. Ludevid, "The expression of a xylanase targeted to ER-protein bodies provides a simple strategy to produce active insoluble enzyme polymers in tobacco plants," *PLoS ONE*, vol. 6, no. 4, Article ID e19474, 2011.
- [60] K. Petersen and R. Bock, "High-level expression of a suite of thermostable cell wall-degrading enzymes from the chloroplast genome," *Plant Molecular Biology*, vol. 76, no. 3-5, pp. 311–321, 2011.
- [61] B. Borkhardt, J. Harholt, P. Ulvskov, B. K. Ahring, B. Jørgensen, and H. Brinch-Pedersen, "Autohydrolysis of plant xylans by apoplastic expression of thermophilic bacterial endo-xylanases," *Plant Biotechnology Journal*, vol. 8, no. 3, pp. 363–374, 2010.
- [62] M. D. Harrison, J. Geijskes, H. D. Coleman et al., "Accumulation of recombinant cellobiohydrolase and endoglucanase in the leaves of mature transgenic sugar cane," *Plant Biotechnology Journal*, vol. 9, no. 8, pp. 884–896, 2011.
- [63] E. E. Hood, R. Love, J. Lane et al., "Subcellular targeting is a key condition for high-level accumulation of cellulase protein in transgenic maize seed," *Plant Biotechnology Journal*, vol. 5, no. 6, pp. 709–719, 2007.
- [64] C. Mei, S. H. Park, R. Sabzikar, C. Qi, C. Ransom, and M. Sticklen, "Green tissue-specific production of a microbial endo-cellulase in maize (*Zea mays* L.) endoplasmic-reticulum and mitochondria converts cellulose into fermentable sugars," *Journal of Chemical Technology and Biotechnology*, vol. 84, no. 5, pp. 689–695, 2009.
- [65] H. Oraby, B. Venkatesh, B. Dale et al., "Enhanced conversion of plant biomass into glucose using transgenic rice-produced endoglucanase for cellulosic ethanol," *Transgenic Research*, vol. 16, no. 6, pp. 739–749, 2007.
- [66] Y. Sun, J. J. Cheng, M. E. Himmel et al., "Expression and characterization of *Acidothermus cellulolyticus* E1 endoglucanase in transgenic duckweed *Lemna minor* 8627," *Bioresource Technology*, vol. 98, no. 15, pp. 2866–2872, 2007.
- [67] D. Verma, A. Kanagaraj, S. Jin, N. D. Singh, P. E. Kolattukudy, and H. Daniell, "Chloroplast-derived enzyme cocktails hydrolyse lignocellulosic biomass and release fermentable sugars," *Plant Biotechnology Journal*, vol. 8, no. 3, pp. 332–350, 2010.



Hindawi

Submit your manuscripts at
<http://www.hindawi.com>

