

## Alzheimer Disease Diagnosis based on Automatic Spontaneous Speech Analysis

K. Lopez-de-Ipiña<sup>1</sup>, J.B. Alonso<sup>2</sup>, J. Solé-Casals<sup>3</sup>, N.Barroso<sup>1</sup>, M. Faundez<sup>4</sup>, M. Ecay<sup>5</sup>, C. Travieso<sup>2</sup>, A. Ezeiza<sup>1</sup>, A. Estanga<sup>5</sup>

<sup>1</sup>System Engineering and Automation Department, University of the Basque Country, Donostia 20008, Spain, [karmele.ipina@ehu.es](mailto:karmele.ipina@ehu.es)

<sup>2</sup>Universidad de Las Palmas de Gran Canaria, IDETIC

<sup>3</sup>Digital Technologies Group. Universitat de Vic

<sup>4</sup>Universitat Politècnica de Mataró (UPC), Tecnocampus

<sup>5</sup>Neurology Department CITA-Alzheimer Foundation

**Abstract.** Alzheimer's disease (AD) is the most prevalent form of progressive degenerative dementia and it has a high socio-economic impact in Western countries, therefore is one of the most active research areas today. Its diagnosis is sometimes made by excluding other dementias, and definitive confirmation must be done through a post-mortem study of the brain tissue of the patient. The purpose of this paper is to contribute to improvement of early diagnosis of AD and its degree of severity, from an automatic analysis performed by non-invasive intelligent methods. The methods selected in this case are Automatic Spontaneous Speech Analysis (ASSA) and Emotional Temperature (ET), that have the great advantage of being non invasive, low cost and without any side effects.

### 1. Introduction

Alzheimer's Diseases (AD) is the most common type of dementia among the elderly people and it is characterized by progressive and irreversible deterioration of higher brain functions or cognition, with loss of memory, judgment and language. The disease prevents the execution of daily life tasks, giving rise to severe disability towards a full dependence. An early and accurate diagnosis of AD helps patients and their families to plan for the future and offers the best opportunity to treat the symptoms of the disease. Currently the only possible way to diagnosis the disease with absolute certainty is by exclusion of other dementias and making a post-mortem brain tissue analysis. Thus for the diagnosis of AD three distinctions are being used: possible, probable and definite [1, 2]. This paper presents a new approach for early AD diagnosis based on two non-invasive and low cost automatic methods: the Automatic Spontaneous Speech Analysis and the Emotional Temperature.

This paper is organized as follows: In the next section some aspects of Alzheimer disease diagnosis and speech features of the language are presented. Resources and methods used are presented in Section 3. In Section 4 we present experimental results. Finally conclusions and future work are depicted in section 5.

## 2. Alzheimer Disease Diagnosis

Eight cognitive domains are most often damaged in AD [3, 4]: memory, language, perception, attention, constructional skills, counselling skills, problem solving, and functional capabilities. The clinical diagnosis is usually based on [3, 4]: Tests of memory and other cognitive functions, behavioural changes analysis; Neuroimaging (CT, SPECT, PET), and the absence of other causes by other medical tests. The greater the number of tests used in the detection, the higher the reliability of the diagnosis. Non-invasive Intelligent Techniques of diagnosis may become valuable tools for early detection of dementia and can be used by non-technologists in the habitual environments of the patient without altering or blocking their abilities. ASSA and ET are some of them.

After the loss of memory, one of the major problems of AD is the language. The loss of ability to express with language will affect two types or two aspects: difficulty to speak and difficulty to understand others, which difficult the natural communication process with the environment. We can find different communication deficits in the area of language, such as [5, 6]:

- Aphasia: difficulty in speaking and understanding
- Anomia: difficulty for recognizing and naming things.

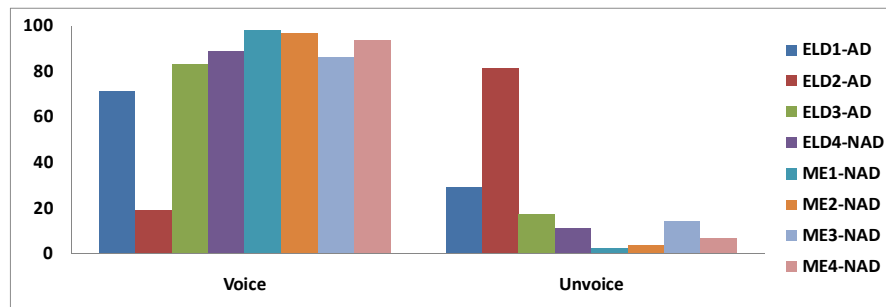
The problems that the patients have for communicating according to the stage of the disease and how it can help would be:

- First Stage: Difficulty for finding the right word in the spontaneous speech. Often it is not detected.
- Second Phase: impoverishment of language and vocabulary for everyday use.
- Third stage: Answers sometimes are very limited and with very few words.

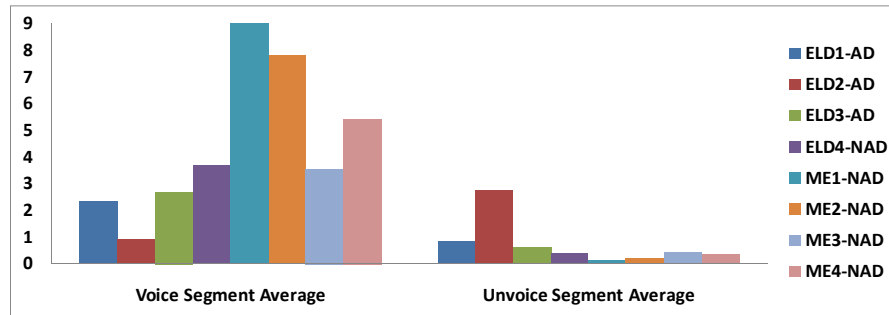
Moreover, the emotional response in Alzheimer's patients becomes impaired and seems to go through different states. In the early stages appears social and even sexual disinhibition, behavioural changes (be angry and not being able to perform common tasks, not to express or not remembering) [7, 8, 9]. However, the emotional memory remains... And they cry more easily to be aware that caregivers of stroke. They gratefully acknowledge the caresses, smiles and hugs. The Alzheimer's patient reacts aggressive on things that, for healthy people, are harmless. Perceives a threat or danger where does not exist. In more advanced stages of Alzheimer's patients often may seem shy and apathetic, symptoms that often are attributed to memory problems or difficulty for finding the right words. Some responses are likely to be magnified due to an alteration in perception. Other research suggests, moreover, that the patients in this progressive brain disorder, in advanced stages, may also have a reduced ability to feel emotions due to loss of memory and memories. Then it appears apathy and sometimes depression.

### 3. Methods

There are different elements that are part of social life, intellectual and personnel that constitute the individual, and one of the most important is spoken language. This allows us to speak, to communicate with others, share knowledge, express well with cultural and personal identity. Spoken language is the most spontaneous, natural, intuitive and efficient communication way among people. Therefore, the analysis by automatic methods of Spontaneous Speech, the freer and more natural expression of communication could be a useful non-invasive way for early diagnosis by combining it with other methodologies. In this study we analyze Spontaneous Speech fluency through measures of voice segment length, pause length, speech development, libraries, short time energy and centroid.



**Figure 1:** Voiced/unvoiced Percentage in the Spontaneous Speech



**Figure 2:** Voiced/unvoiced Segment Average

Emotions arise from the need to face a changing and partially unpredictable world which makes necessary to any intelligent system (natural or artificial) the development of emotions to survive [10,11,12]. Emotions are closely linked to learning and understanding process. Emotions are cognitive processes related to the architecture of the human mind (decision making, memory, attention, etc.). Emotions use the same compo-

nents subjective, cultural, physiological and behavioural that the individual's perception express with regard to the mental state, the body and how it interacts with the environment. The emotions, far from being an obstacle in understanding the universe, describe it clearly. Therefore, we will use the measure called Emotional Temperature [13] in our study.

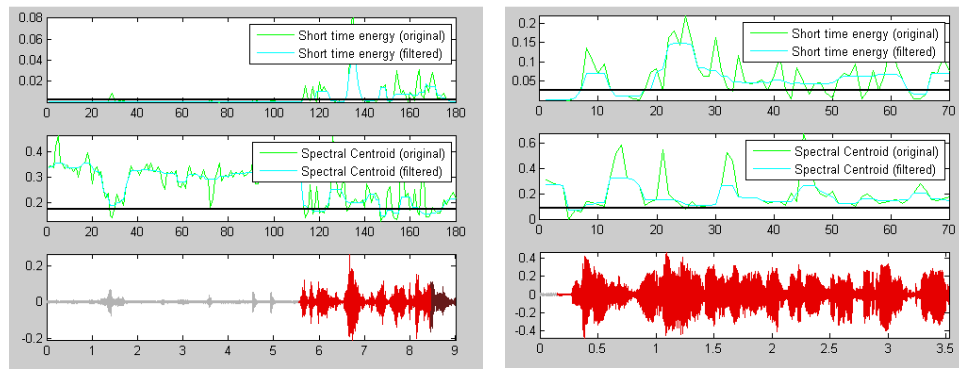
#### 4. Experimental Results

The database for the experimentation is composed by about 10 hours of Spontaneous Speech from videos where people tell enjoyable personal stories divided in about 30 minutes of people with AD diagnosis and about 9 hours of control people. The recording atmosphere is relaxed and non-invasive. The speech is divided into segments of 60 seconds. Finally it is obtained a database of about 600 segments of Spontaneous Speech.

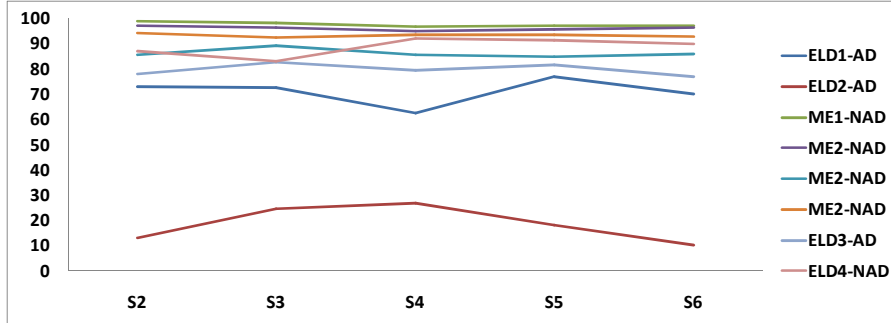
The database is multicultural and multilingual and with a wide range of ages. In this experimentation 4 control people of middle age (ME-NAD) (2 males and 2 females), 3 people with AD (ELD-AD) diagnosis and one elder person without pathology (ELD-NAD) will be used. The first set of tests consists of ASSA experiments.

Results (Fig. 1, 2, 3 and 4) show significant fluency loss in people with AD with regard to the voiced/unvoiced percentage in the speech (Fig. 1) and to the length of voiced/unvoiced segments (Fig. 2).

Figure 3 shows lower Short Time Energy also for this people and lower Spectral Centroid for AD. The Spontaneous Speech Evolution with regard to the Speech Percentage (Fig. 4) along the time (consecutive segments (S2:S6) shows that people with AD disease tend to decrease the length of voice segments and the fluency by increasing the unvoiced segment number and decreasing the length of voice segments. Results show a decreasing slope in the evolution of Spontaneous Speech for people with AD.



**Figure 3:** Plots of Speech Signal, Short Time Energy and Spectral Centroid



**Figure 4:** The Spontaneous Speech Evolution with regard to the Speech Percentage along the time, for the consecutive segments (S2:S6)

The first set of tests, consist of experiments of Emotional Temperature. Support vector machines (SVM) [14] have been used to quantify the discriminative ability of the proposed measures. We have used a freely available implementation named LIBSVM [14] in our implementation, where a radial basis kernel function was used.

Classification targets are: speakers without neurological pathologies and speakers diagnosed with Alzheimer. To estimate the measure “emotional temperature”, first of all each temporal frame is classified using a SVM (also using a threshold that is obtained from EER in the training step) and next, the percentage of temporal frame that are classify as no pathological is calculated, where this value is the "emotional temperature" measure. Besides, normalization is made to the measure "emotional temperature", for that the measure "emotional temperature" has a value 50 in the threshold of EER estimated in the training step.

## 5. Conclusions

In this paper new approaches for Alzheimer Disease diagnosis based on Automatic Spontaneous Speech Analysis and Emotional Temperature have been presented. The purpose of the work is to contribute to improve early diagnosis of dementia and severity from automatic analysis, performed by non-invasive automated intelligent methods. The selected methods in this case are Automatic Spontaneous Speech Analysis (ASSA) and Emotional Temperature (ET).

These methodologies have the great advantage of being non invasive, low cost methodologies and have no side effects. The research on multicultural and multilingual population shows some encouraging results both in terms of the ASSA and the Emotional Temperature, showing tendencies to explore with a broader population. In future work we will integrate the described methodologies with automatic analysis methods of drawing and handwriting as well as with automatic analysis of facial features. We will extend also the analysis population as well as the type of pathology.

## Acknowledgment

This work has been partially supported by SAIOTEK from the Basque Government. Dr. Solé-Casals also acknowledges the partial support of the University of Vic under the research grant R0904.

## References

1. Sociedad Española de Neurología, <http://www.sen.es/>
2. Van de Pol, L.A., et al., *The effects of age and Alzheimer's disease on hippocampal volumes, a MRI study.* Alzheimer's and Dementia, 2005. 1(1, Supplement 1): p. 51.
3. Morris JC, The Clinical Dementia Rating (CDR): current version and scoring rules. *Neurology*, 1993. 43: p. 2412b-2414b.
4. American Psychiatric Association, 2000. *Diagnostic and Statistical Manual of Mental disorders, 4th Edition Text Revision.* Washington DC
5. Buiza Cristian. Evaluación y tratamiento de los trastornos del lenguaje, Psicóloga. Gerontóloga. Unidad de Memoria y Alzheimer. Matia Fundazioa. Donostia, 2010
6. Martínez-F, García J., Pérez, E. Carro J., Anara, J.M. Patrones de Prosodia expresiva en pacientes con enfermedad de Alzheimer, *Psicothema*, Vol. 24 , nº 1 , pp. 16-21, 2012.
7. Shimokawa, A., Yatomi, N., Anamizu, S., Torii, S., Isono, H., Sugai, Y., & Kohno, M. (2001). Influence of deteriorating ability of emotional comprehension on interpersonal behaviour in Alzheimer-type dementia. *Brain and Cognition*, 47, 423-433.
8. Goodkind MS, Gyurak A, McCarthy M, Miller BL, Levenson RW., Emotion regulation deficits in frontotemporal lobar degeneration and Alzheimer's disease., *Psychol Aging*. 2010 Mar;25(1):30-7. PMID, 20230125, PMCID: PMC2841311
9. Cadieux N. and Greeve K. Emotion processing in Alzheimer's disease, *Journal of the International Neuropsychological Society*, 1997, 3: 411-419, The International Neuropsychological Society, DOI: (About DOI) Published online: 2000.
10. M. L. Knapp. *Essentials of nonverbal communication.* Holt, Rinehart & Winston (1980).
11. Cowie, E. et al. 'Emotion Recognition in Human-Computer Interaction'. *IEEE Signal Processing Magazine*, Vol 18(1). Pp. 32-80 (2001).
12. R. Plutchnik, *Emotion: A psychoevolutionary synthesis*' New York, Harper and Row (1980).
13. Alonso J., De León J., Alonso I., Ferrer MA. Automatic detection of pathologies in the voice by HOS base parameters. *Journal on Applied Signal Processing*. 2001; 4:275-284
14. Chang CC, Lin CJ. LIBSVM: a library for support vector machines; 2001. Available from: <http://www.csie.ntu.edu.tw/~cjlin/libsvm>