

ULiS: An Expert System on Linguistics to Support Multilingual Management of Interlingual Semantic Web Knowledge bases

Maxime Lefrançois, Fabien Gandon

► To cite this version:

Maxime Lefrançois, Fabien Gandon. ULiS: An Expert System on Linguistics to Support Multilingual Management of Interlingual Semantic Web Knowledge bases. MSW - Proc. 2nd Workshop on the Multilingual Semantic Web, collocated with ISWC - 2011, Elena Montiel-Ponsoda and John McCrae and Paul Buitelaar and Philipp Cimiano, Oct 2011, Bonn, Germany. pp.50-61. hal-00724566

HAL Id: hal-00724566

<https://hal.inria.fr/hal-00724566>

Submitted on 21 Aug 2012

HAL is a multi-disciplinary open access archive for the deposit and dissemination of scientific research documents, whether they are published or not. The documents may come from teaching and research institutions in France or abroad, or from public or private research centers.

L'archive ouverte pluridisciplinaire **HAL**, est destinée au dépôt et à la diffusion de documents scientifiques de niveau recherche, publiés ou non, émanant des établissements d'enseignement et de recherche français ou étrangers, des laboratoires publics ou privés.

ULiS: An Expert System on Linguistics to Support Multilingual Management of Interlingual Semantic Web Knowledge bases

Maxime Lefrançois, Fabien Gandon

EPI Edelweiss – INRIA Sophia Antipolis
2004 rt des Lucioles, BP93, Sophia Antipolis, 06902, France
Maxime.Lefrancois@inria.fr | Fabien.Gandon@inria.fr

Abstract. We are interested in bridging the world of natural language and the world of the semantic web in particular to support multilingual access to the web of data. In this paper we introduce the ULiS project, that aims at designing a pivot-based NLP technique called *Universal Linguistic System*, 100% using the semantic web formalisms, and being compliant with the Meaning-Text theory. Through the ULiS, a user could interact with an *interlingual knowledge base* (IKB) in controlled natural language. Linguistic resources themselves are part of a specific IKB: *The Universal Lexical Knowledge base* (ULK), so that actors may enhance their controlled natural language, through requests in controlled natural language. We describe a basic interaction scenario at the system level, and provide an overview of the architecture of ULiS. We then introduce the core of the ULiS: the *interlingual lexical ontology* (ILexiOn), in which each interlingual lexical unit class (ILU^c) supports the projection of its semantic decomposition on itself. We validate our model with a standalone ILexiOn, and introduce and explain a concise human-readable notation for it.

Keywords. Semantic Web; Explanatory Combinatorial Lexicology; Interlingual Lexical Ontology; Semantic decomposition; Interlingual Lexical Primitives, Meaning Text Theory.

1 Introduction

In this paper we introduce and illustrate the recently begun ULiS project, which aims at redesigning a pivot-based NLP technique, 100% using the semantic web formalisms, and being compliant with the Meaning-Text theory. ULiS stands for *Universal Linguistic System*, and is a system through which multiple actors could interact with *interlingual semantic web knowledge bases* in multiple controlled (i.e., restricted and formal) natural languages. Each controlled natural language (dictionary, grammar rules) would be described in a part of a *universal linguistic knowledge base* (ULK). Besides this, the ULK consists in one specific interlingual knowledge base. Actors could then enhance their controlled natural language through different actions in controlled natural language (e.g., create, describe, modify, merge, or delete lexical units in the dictionaries and grammar rules; connect situational lexical units to interlingual lexical units; add linguistic attributes with their associated rules, etc.).

The aim of this paper is to overview our proposal for the architecture of ULiS, and to introduce and validate the cornerstone of the universal linguistic knowledge base: the *interlingual lexical ontology* (ILexicOn).

2 Related Work

The Meaning-Text Theory (MTT). The MTT is a theoretical linguistic framework for the construction of models of natural language. As such, its goal is to write systems of explicit rules that express the correspondence between meanings and texts (or sounds) in various languages (Kahane, 2003). Seven different levels of linguistic representation are supposed for each set of synonymous utterances: a semantic representation that is a network; the deep and surface syntactic representations (DSynR and SSynR) that are trees; the deep and surface morphological representations (DMorphR and SMorphR) that are lists of annotated tokens; and the the deep and surface phonological representations (DPhonR and SPhonR) that are also lists of annotated tokens. (Mel'čuk, 1998).

Thus, twelve modules containing transformation rules are used to transcribe representations of a level into representations of an adjacent level. The main constituent of the MTT is the dictionary model where lexical units are described, which is called the *Explanatory Combinatorial Dictionary* (ECD), and has been the object of many works on lexical functions, e.g., (Mel'čuk et. al., 1995).

Lexical ontologies and meaning representation languages. Lexical ontologies are ontologies of lexicalized concepts, widely used to model lexical semantics. Some have broad coverage but shallow treatment (i.e., with no or little axiomatization) such as Princeton WordNet (e.g., Miller et al., 1990), and some have small coverage but are highly axiomatized such as FrameNet (Baker et al. 1998). They use different theories of lexical semantics but most of them do not describe phrasemes nor lexical collocations. The French Lexical Network (Lux-Pogodalla & Polguère, 2011) is a growing ECD-compliant lexical resource, but it does not use the semantic web formalisms, and the definitions of the lexical units are not fully formalized.

On the other hand, the Universal Networking Language (UNL) is a meaning representation language, originally designed for pivot techniques Machine Translation. Its dictionary is an interlingual lexical ontology based on so-called Universal Words ++, but the lack of argument frames and lexical functions in the UNL dictionary was pointed out in (Bogulsavsky, 2002; Bogulsavsky, 2005). This is when the idea of an ECD-compliant interlingual lexical ontology was first mentioned. After the semantic web formalisms were introduced at the W3C, an attempt to port the UNL to semantic web formalisms was the topic of the W3C Common Web Language Incubator Group (XGR-CWL, 2008), but no improvement was made to the lexical ontology.

SPARQL Inferencing Notation (SPIN). Grammar rules are not part of the Common Web Language (CWL) framework, in fact, the construction of grammar modules may

be done in any programming language. Knublauch et. al. (2011) introduced SPIN: an RDFS schema to represent SPARQL rules and constraints.

Positioning of the ULiS project. The lexical resource we propose to develop is an interlingual lexical ontology coupled with a situational (i.e., a generalization of language-specific) lexical ontology, both using semantic web formalisms, and that together form an ECD-compliant dictionary. Benefits of using semantic web formalisms are high as it enables us to construct an axiomatized graph-representation of a lexical ontology, with validation and inference rules. Using SPIN, we propose to include transformation rules directly in an RDF format, on top of the ECD-compliant lexical ontologies, thus obtaining an expert system on linguistics.

The ULiS model is somehow similar to the FunGramKB (Periñán-Pascual & Arcas-Túnez, 2010) which is a lexico-conceptual knowledge base for NLP. However, the two projects have different inspiring influence. We choose to comply with the Meaning-Text theory, which gives a thorough understanding of lexical functions that are ubiquitous in every natural language. We also choose to describe the whole ULiS with the semantic web formalisms. This thus potentially enables the enhancement of the system itself through controlled natural language interactions.

3 Basic Interaction Scenarios with the ULiS

The three basic scenarios of ULiS are illustrated on Figure 1 below.

An actor in a situation c inputs some utterance (e.g., in English: "Who killed Mary?") that is first transformed into an RDF situational representation, which undergoes different language-specific process, and which is finally transformed into a CWL-like interlingual representation.

Machine translation. At this stage, depending on the context, the interlingual representation of the utterance may be translated into another utterance in situation d (e.g., in the French situation: "Qui a tué Mary?") through a situational representation (Output1^{TEXT} on Figure 1).

Management of Interlingual Knowledge Bases. Another possibility is that the interlingual representation of the utterance is transformed in a SPARQL request that is applied on an *interlingual knowledge base* (IKB), which eventually produces an RDF output (e.g., `ex:John01`). This RDF output is then first transformed into an interlingual representation, then into a situational representation and finally into an output utterance: Output2^{TEXT} on Figure 1 (e.g., "John killed Mary").

Management of the Universal Linguistic Knowledge base. Finally, the third scenario is the human-computing scenario: the SPARQL request is applied on the Universal Linguistic Knowledge base, which is the Interlingual Knowledge Base where the

whole ULiS is described. Human actors may thus enhance the controlled natural languages through actions stated in controlled natural language.

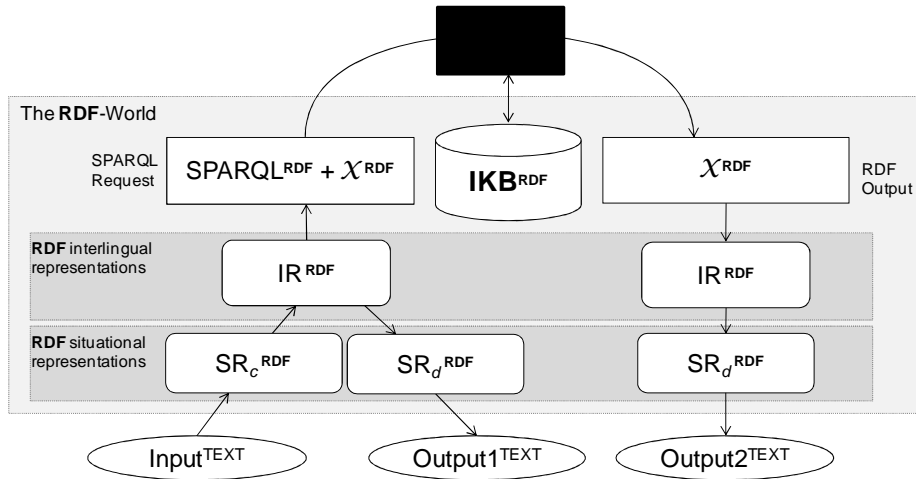


Fig. 1. ULiS: The basic interaction scenario with an interlingual knowledge base.

Thus the interlingual representation format acts as a pivot not only for natural languages, but any interlingual representation may be translated into a SPARQL request, and any RDF graph may be translated to an interlingual representation.

4 The ULiS components

4.1 Overview

Figure 2 below illustrates the ULiS, with its three different layers:

The second row represents interlingual layer (section 4.2), with a meta-ontology that describes the *interlingual lexical ontology* (ILexicOn): the cornerstone of the whole *Universal Linguistic Knowledge base*. The ILexicOn enables inference in *interlingual semantic representations* (ISemRs, on the right).

The first row represents the *interlingual knowledge base* (IKB) layer, with facts (on the right) and an ontology or thesaurus (on the left), augmented with anchors and transformation rules (section 4.4), that enable the transformation of facts into ISemRs, and vice versa. The IKB enables situation-independent inference on utterance representation.

The third row represents the situational layer (section 4.3), with a meta-ontology that describes the *situational lexical ontology* (SLexicOn), that itself enables situation-dependent linguistic inference on utterances' situation-dependent representations (*Situational representations*, SRs, on the right). Situation-annotated links and transformation rules define transformation of utterances among SRs.

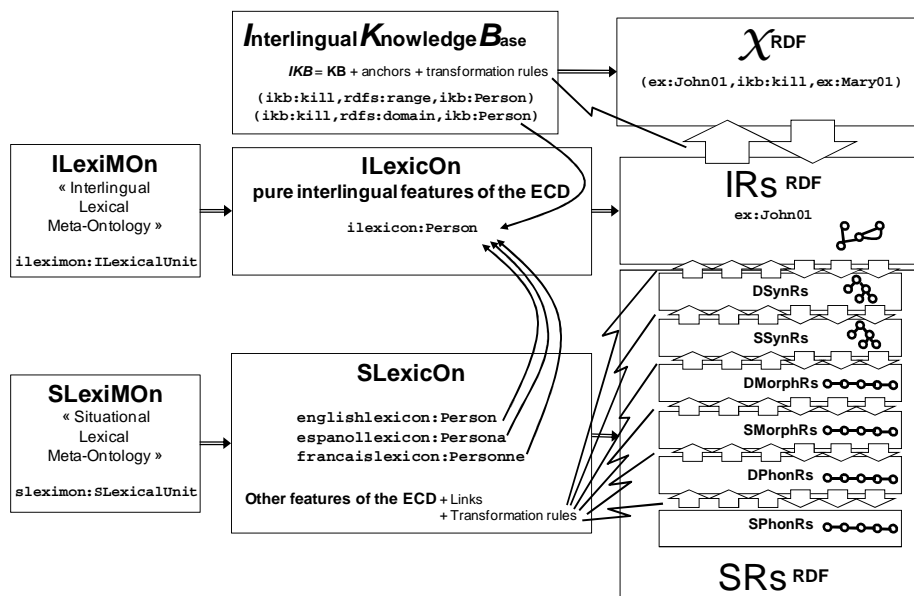


Fig. 2. Overview of the architecture of the ULiS.

From top to bottom: the interlingual layer, the interlingual layer, the situational layer.

From left to right: meta-ontologies; ontologies; facts and different representations.

4.2 Architecture in the interlingual layer

The interlingual layer of ULiS is divided in three components:

The meta-ontology. The *interlingual lexical meta-ontology* (ILexiMON) is the schema that the ILexicOn must satisfy to be compliant with the pure semantic features of the Explanatory Combinatorial Dictionary (ECD). It defines meta-classes, uses RDFS and some of OWL full's axioms, and contains *ad hoc* SPIN validation and inference rules for the ILexicOn and the *interlingual semantic representations* (ISemRs).

The ontology. The *interlingual lexical ontology* (ILexicOn) is the interlingual dictionary where *interlingual lexical unit classes* (ILU^cs) are formally defined as instances of the ILexicalUnit meta-class from the ILexiMON. The ILexicOn contains all the pure semantic features of the *Explanatory Combinatorial Dictionary* (ECD). Any concept expressible in a natural language or a jargon is defined in the ILexicOn that contains:

- The formal definitions of the ILU^cs (described in section 5.2)
- The definitions of *interlingual attribute classes* (IAtts) (e.g., plural, future, 1st person, indefinite, etc.);

- The definitions of the *interlingual semantic relations* (ISemRels), that are used in the formal definitions of the ILU^cs and to construct *interlingual semantic representations* (ISemRs);
- Interlingual lexical functions: every purely-semantic lexical links such as synonymy, and purely-semantic generic constructions such as the lexical function Centr(X), i.e., ‘the center of X’, or Fin(X), i.e., ‘stop being X’.

The interlingual semantic representations. ISemRs are RDF graphs with nodes being *interlingual lexical unit instances* (ILUⁱs), and arcs being ISemRels. ILUⁱs may also be instances of IAtts. Arcs are *interlingual semantic relations* (ISemRels).

4.3 To and from Natural Language facts

Situations. Interlingual-based lexical resources consider connecting language specific dictionaries to some interlingual dictionary. We generalize this by using situations (i.e., the situations of understanding and use of some linguistic element).

The situation of a linguistic element is part of the pragmatics of its use: it represents not only the language used (e.g., EN, FR), but also sociolectal marks (e.g., biologists, architects, official, slang, reverential), topolectal marks (e.g., U.S., Canada), chronolectal marks (e.g., old, neologic), and even individual marks (e.g., a particular group of people). The intersection of situations is also a situation (EN-U.S.-slang), and so is the union of situations (FR-Canada OR FR-France-old).

Architecture of the situational layer. This architecture purposefully mirrors the interlingual layer:

A *situational lexical meta-ontology* (SLexiMOn) describes the SLexiOn,

A *situational lexical ontology* (SLexiOn), contains all non-purely semantic features of the ECD. A non-exhaustive list is the following:

- Definitions of *situational lexical unit classes*, called SLU^cs, by means of a link to an ILU^c, which is annotated by a specific situation.
- Situational lexical functions such as Instr(X), i.e., the preposition that governs the keyword X and means: ‘by means of’.
- Situational attribute classes (e.g., invariable English nouns, French 1st verb group, German dative, etc.), their associated situations and rules.
- Situational relations: relations that link two instances of the SLU^cs, thus defining the dependency syntax of the utterance, or the order of the words in an utterance.

Situational representations (SRs). The data consist of *situational representations* (SRs): RDF graphs having *situational lexical unit instances* (SLUⁱs) as nodes and situational relations as arcs. A SR thus represents the different representations of the Meaning-Text theory.

Transformation rules. Contrary to the Common Web Language (CWL), where no grammar rules representation is proposed, we plan to introduce *transformation rules*

in the SLexiMOn. Transformation rules form a subclass of the SPIN rules and are attached to a SLU^c to define a correspondence between a generic pattern from a representation level, to another pattern at a deeper or to a higher representation level. Thus, each situation may define its own analysis and production grammar, both made of six sets of transformation rules.

Transformation rules may be sorted according to their level of genericity: transformation rules that are attached to ISemRels, or to IAtts, are less specific than rules that may be triggered only when a complex ISemR patterns is met; also, rules that may be triggered in generic situations are less specific than those that may only be triggered in more specific situations. The important point is that a rule must be triggered if and only if there is not a more specific rule that can be triggered instead. This implies that an algorithm different from the simple forward-chaining algorithm must be proposed. It will be very important to optimize the application of such an algorithm with a whole set of rules. We therefore plan to construct a Rete network (Forgy, 1982) on top of each set of transformation rules, which is eased by the SPIN framework as each rule is modeled as an RDF graph.

Finally, a set of generic transformation rules must be designed to ensure that for each situation, every SR is transformable to an ISemR, and that every ISemR is transformable to a SR. When a new situation is introduced (e.g., a new language), this criterion is *a priori* not met. This is the reason why we suggest the introduction of the universal situation, and transformation rules that produce Notation3-like output. We claim that a small set of rules will suffice to produce and analyze simple controlled natural languages.

4.4 To and from Interlingual Knowledge Bases facts.

Interlingual knowledge bases. The main criterion that an interlingual knowledge base must meet is that any RDF graph inside it must be transformable into an *interlingual semantic representation* (ISemR). We thus propose to form interlingual knowledge bases by augmenting classic knowledge bases with *anchors* and *transformation rules*:

- An anchor is a triple that links an RDF resource to an ILU^c. For instance, the RDF resource `rdfs:Class` will be anchored to a specific ILU^c `illexicon:RdfClass` that formally defines the concept of an RDF class, and that is itself linked to an English SLU^c that is a pluralizable noun realized by the string "class";
- The transformation rules are stored in the interlingual knowledge base and form two separated sets of rules: one for producing RDF from an ISemR, the other for producing an ISemR from RDF. Here again, transformation rules may be sorted according to their level of genericity, and the most generic rules must be inhibited when more specific ones can be triggered.

Augmenting classic semantic web formalisms. The output of an ISemR must be a valid SPARQL request, and the output of any RDF graph must be a valid ISemR. This criterion will be satisfied by the introduction of different anchors and generic trans-

formation rules in the classic semantic web vocabularies: RDF, then RDFS, OWL and SPIN, and finally SKOS. Thus an RDF class that has no anchor, e.g., `foaf:Person`, has a correspondence with an ISemR that itself has a correspondence to the textual representation for the EN situation: "The RDF class `foaf:Person`".

5 Modeling Choices in the Interlingual Layer

5.1 Overview

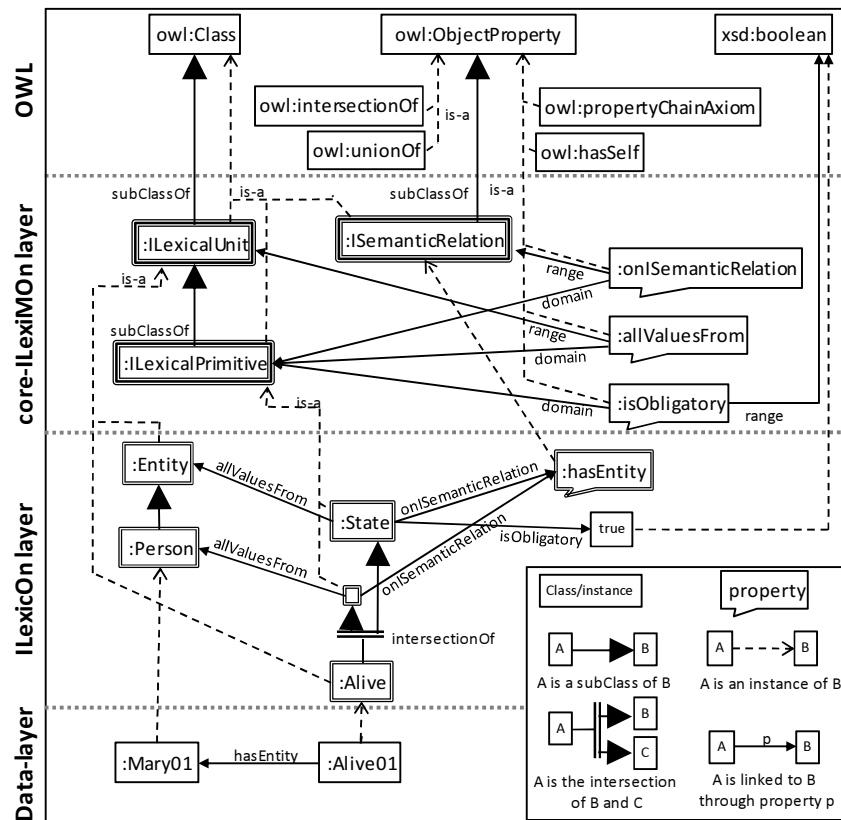


Fig. 3. The three components of the interlingual layer, with details of the whole core-ILexiMON that we introduced, and overview of the light standalone ILexiON and the data.

Figure 3 illustrates the architecture of our work, with its integration in the semantic web formalisms. To validate our approach, we designed a light core-ILexiMON¹, a light standalone ILexiON², and simple ISemRs³.

¹ RDF/XML document available at URL: <http://ns.inria.fr/ulk/2011/06/10/ileximon-core>

² RDF/XML document available at URL: <http://ns.inria.fr/ulk/2011/06/10/ilexicon-ex>

³ RDF/XML document available at URL: <http://ns.inria.fr/ulk/2011/06/10/sems-ex>

From top to bottom: 1) the semantic web formalisms, with a few OWL classes and properties that are useful for our work; 2) the detailed core-ILexiMON; 3) an overview of the light standalone ILexiOn; and 4) an overview of data from the interlingual data component. Notice that: i) ILUⁱ's from the data are instances of ILU^c's described in the ILexiOn, that are themselves instances of the ILexicalUnit meta-classes described in the ILexiMON; and ii) properties used to link two resources in a layer are described in an upper layer.

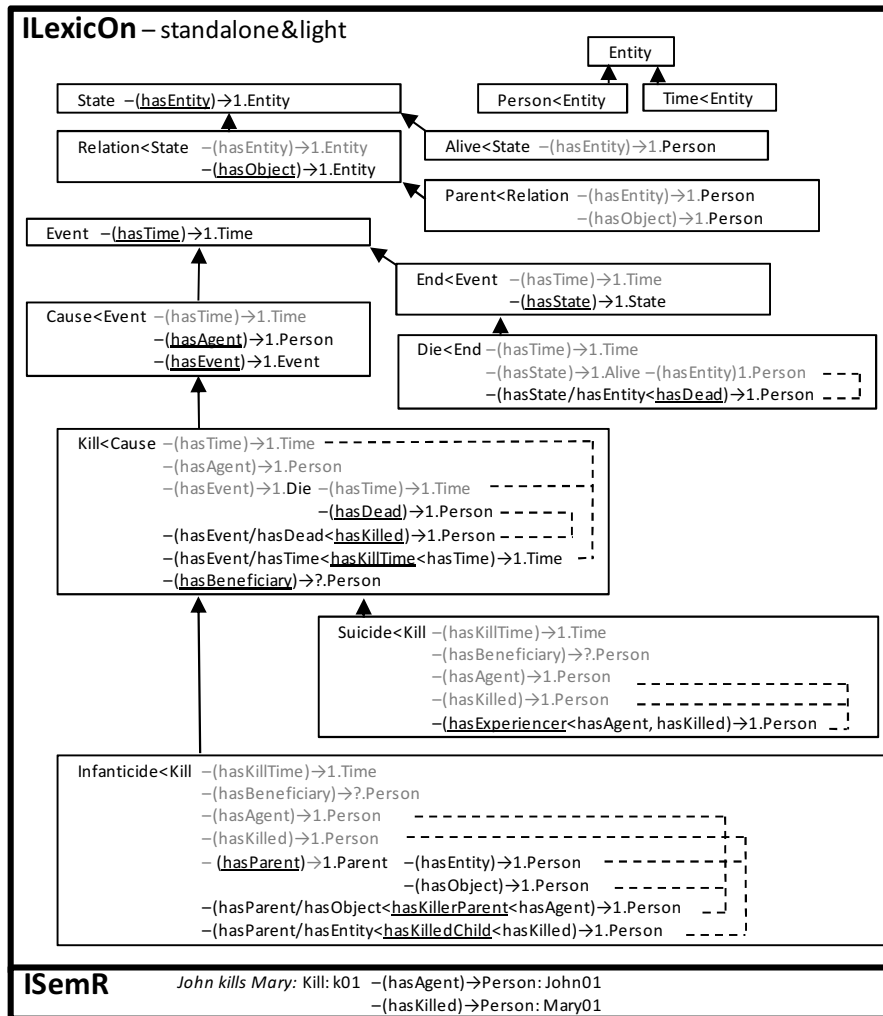


Fig. 4. The light standalone ILexiOn and one ISemR described with our notation.

Figure 4 above concisely describes the light standalone ILexiOn using a notation inspired from Sowa's conceptual graphs (Sowa, 1984). Each rectangle represents the definition of the ILUc that is written in its top-left corner.

5.2 The lexicographic definition of lexical units

In the ILexiOn is propose a novel approach to the lexicographic definition of an ILU^c that consists in projecting the minimal semantic decomposition of the ILU^c on the ILU^c using *Conceptual Participant slots* (ConP-slot): the implicit semantic link that exists between an ILU^c L and one of the participants of the minimal semantic decomposition of L (Mel'čuk, 2004 ; Lefrançois & Gandon, 2011).

Interlingual lexical units (classes and instances): ILU^cs are instances of the ILexicalUnit meta-class from the ILexiMON (c.f., Figure 3). They are defined in the ILexiOn (c.f., Figure 4, e.g., Entity, Person, State, Alive, Event, Cause). In our notation, symbol < represents the rdfs:subClassOf axiom that may be used to state inheritance between ILU^cs (e.g., Person<Entity, Alive<State, Cause<Event). For instance, The ILU^c Person is a sub-class of the ILU^c class Entity, and the ILU^c Entity is the parent of the ILU^c Person. Complex ILU^cs may be constructed through owl:intersectionOf and owl:unionOf. Finally, *interlingual lexical unit instances* (ILUⁱs) are instances of ILU^cs and are used in the data component as nodes of the interlingual semantic representations.

Interlingual semantic relations: ISemRels are instances of the ISemRelation meta-class of the ILexiMON, and thus instances of owl:ObjectProperties. They are introduced in the LexiOn and used in the data to link ILUⁱs (see Figure 3&4). In our notation, symbol < represents the rdfs:subPropertyOf axiom that may be used to define a new ISemRel as being a sub-ISemRel of one or more ISemRels (e.g., hasExperiencer<hasAgent, hasKilled). Symbol / represents the owl:propertyChainAxiom axiom that may also be used to state that a ISemRel is a super-ISemRel of the composition of two or more ISemRels (e.g., hasState/hasEntity<hasDead). These two axioms may be combined to define complex ISemRels (e.g., hasEvent/hasTime<hasKillTime<hasTime).

Interlingual lexical primitives: An ILU^c L is a ILP^c if and only if it derives from no other ILU^c but has at least one ConP-slot. Non-lexical primitives then derive from one or more lexical primitives following the *ConP-slot* inheritance and introduction principle:

An ILU^c L inherits from its parents' ConP-slots, and may also introduce new ConP-slots;

One may thus consider only participants that are necessary and sufficient to the minimal projection of L. ILP^cs are defined as instances of the ILexicalPrimitive meta-class from the ILexiMON (c.f., Figure 3). An ILP^c must be linked through: i) the onISemanticRelation property to exactly one ISemanticRelation; ii) the allValuesFrom property to exactly one ILexicalUnit; and iii) the isObligatory property to exactly one xsd:boolean.

Conceptual participant slots: In Figure 4, each line with an arrow in the definition of an ILU^c represents a conceptual participant slot (ConP-slot) that restricts the use of a specific ISemRel for this ILU^c and its descendants. Actually, such a line means that the defined ILU^c is a sub-class of an ILP^c. For instance, the line State-(hasEntity)→1.Entity states that any instance of the State class is linked exactly once

through the `hasEntity` relation to an instance of the Entity class. Let us focus on the notation used on Figure 4:

- **Inheritance.** ConP-slots may be newly defined (black font, e.g., `State-(hasEntity)→1.Entity`), fully inherited (grey font, e.g., `Relation<State-(hasEntity)→1.Entity`) or partially inherited (grey font for the inherited part, e.g., `Alive<State-(hasEntity)→1.Person`). The ILU^c on the right hand side of the line is called the *current range of the ConP-slot*.
- **Obligatory vs. optional.** A ConP-slot may be obligatory (symbol 1, e.g., `Alive<State-(hasEntity)→1.Person`) or optional (symbol ?, e.g., `Kill<Cause-(hasBeneficiary)→?.Person`). When an optional ConP-slot is inherited, it may be restricted to being obligatory.
- **Domain/range of the ISemRel.** As an ISemRel is an `rdf:Property`, it may restrict its domain and its range i.e., what ILU^c the subject (resp. the object) of a triple that involves this ISemRel does belong to. When an ISemRel is underlined, it means that its domain is set to the defined ILU^c , and that its range is set to the current ILU^c range of the ConP-slot. (e.g., `State-(hasEntity)→1.Entity`).
- **ISemRel subproperty and composition axioms.** As we stated in section 4.2.2, complex ISemRel may be defined thanks to inheritance and composition. There are benefits in using such ISemRel to qualify a new ConP-slot. In fact, this combined with the maximum cardinality of ConP-slots restricted to 1, imposes the equality of ILU^i in the data. We illustrate these inferable equalities by dotted lines on the right of ConP-slots.

The ISemRel inheritance and composition is what enables the projection not only of trees, but also graphs, onto one node. Thus, each ILU^c described in the ILexicon contains the projection of its semantic decomposition graph. We illustrated this on Figure 4 with complex ILU^c such as `ilexicon:Suicide` (the killer is the person killed) and `ilexicon:Infanticide` (the killer is the parent of the person killed).

6 Conclusions and discussions

We introduced a *universal linguistic system* (ULiS) through which multiple actors could interact with an *interlingual knowledge base* (IKB) in controlled natural language. We explained an interaction scenario with ULiS, which can serve for machine translation and for multilingual management of interlingual knowledge bases. We then gave an overview of the layers ULiS is made of: the interlingual layer; the situational layer; and an interlingual knowledge base.

The main novelty of our proposal is that the characteristics of each controlled natural language are stored in a specific interlingual knowledge base. Thus, actors could enhance their controlled natural language through requests expressed in controlled natural language.

We introduced and illustrated a novel approach to formally define ILU^c s: we make ILU^c s support a projection of their semantic decomposition. We introduced a human-readable notation to represent ILexicon, and we used this notation to validate our

approach with a simple standalone ILexicOn. We thus showed that simple and complex ILU^cs may be formally defined with our novel approach.

We are currently working on the formalization of lexical functions in the ILexicOn and of the SLexicOn, and we are to partly populate our lexical resources with lexical units from other lexical resources such as the French Lexical Network. We finally plan to validate our results by the design and the experimentation of a web-based prototype with a simple interlingual knowledge base (e.g., the "interlingual-augmented" wine ontology), and a few situations based on English and French.

References

1. Baker, C.F., Fillmore, C.J., and Lowe, J.B.: The Berkeley Framenet project. In Proceedings of the 36th Annual Meeting of the Association for Computational Linguistics and 17th International Conference on Computational Linguistics-Volume 1, 16-90 (1998)
2. Boguslavsky, I.: Some Lexical Issues of UNL. Proceedings of the First International Workshop on UNL, other interlinguas and their applications, Las Palmas, 19-22 (2002)
3. Boguslavsky, I.: Some controversial issues of UNL: Linguistic aspects. *Research on Computer Science*, 12:77-100 (2005)
4. Blay-Fornarino, M., Pinna-Dery, A.-M., Schmidt, K., and Zaraté, P.: Cooperative Systems Design: A Challenge of the Mobility Age. In: Proceedings of COOP 2002, Saint-Raphaël, France, 4-7 June 2002, IOS Press, pp.23-37 (2002)
5. Forgy, C.: Rete: A Fast Algorithm for the Many Pattern/Many Object Pattern Match Problem. In: *Artificial Intelligence*, vol. 19, pp. 17-37 (1982)
6. Kahane, S.: The Meaning-Text Theory, Dependency and Valency. In: *Handbooks of Linguistics and Communication Sciences 25 : 1-2*, Berlin/NY: De Gruyter, 32 p. (2003)
7. Lefrançois, M., and Gandon, F.: ILexicOn: toward an ECD-compliant interlingual lexical ontology described with semantic web formalisms. In Proceedings of the 5th Meaning-Text Theory, Barcelona (Spain), 155-164 (2011)
8. Lux-Pogodalla, V., and Polguère, A.: Construction of a French Lexical Network: Methodological Issues. *International Workshop on Lexical Resources* (2011)
9. Mel'čuk, I.A., Clas, A., and Polguère, A.: *Introduction à la lexicologie explicative et combinatoire* (1995)
10. Mel'čuk, I.A.: The Meaning-Text Approach to the Study of Natural Language and Linguistic Functional Models. [Invited lecture.] In S. Embleton (ed.): *LACUS Forum 24*, Chapel Hill: LACUS, pp. 3-20 (1998)
11. Mel'čuk, I.A.: Actants in semantics and syntax I: Actants in semantics. *Linguistics*, 42(1):1-66 (2004)
12. Miller, G.A., Beckwith, R., Fellbaum, C., Gross, D., and Miller, K.: Introduction to wordnet: An on-line lexical database. *Int. Journal of Lexicography*, 3(4):235-344 (1990).
13. Perinián Pascual, C. and Arcas Túnez, F.: The architecture of FunGramKB. In Proceedings of the Seventh International Conference on Language Resources and Evaluation, Valeta (Malta), 2667-2674 (2010)
14. Sowa, J.F.: *Conceptual structures: information processing in mind and machine*, System programming series, Addison-Wesley (1984)
15. XGR-CWL: Report of W3C Incubator Group on Common Web Language, <http://www.w3.org/2005/Incubator/cwl/XGR-cwl-20080331/> (2008)