

## EPIDURAL HEMATOMA IN DIFFERENT AGES DUE TO ROAD TRAFFIC ACCIDENTS ON COMPUTED TOMOGRAPHY SCAN BRAIN

Sohail Amir<sup>1</sup>, Muhammad Ali Noman<sup>2</sup>, Shahid Ayub<sup>3</sup>

### **ABSTRACT:**

#### **OBJECTIVES:**

*In developing countries, road traffic accidents are common and primarily affect middle-aged men. The aim of this study was to evaluate the frequency of epidural hematoma in people of various ages owing to road traffic incidents on computed tomography scan brain.*

#### **METHODOLOGY:**

*From February 2018 to January 2021, a cross-sectional descriptive study was done in the Department of Neurosurgery. A total of 460 individuals were chosen from emergency room visits due to traffic accidents. Individuals who had suffered a head injury and had an epidural hematoma on a computed tomography scan were included in the study. The frequency of epidural hematoma in different ages was determined.*

#### **RESULTS:**

*A total of 460 patients were enrolled in the trial, with 196 (42.60%) having epidural hematomas and 264 having no epidural hematomas (57.39%). Males accounted for 152 (77.55%) of the 196 epidural hematoma cases, while females accounted for 44 (22.45%), with an average age of 19 years and a range of 2-55±9.59 years. All the people who had a head injury were divided into three groups. The prevalence of epidural hematoma varied by age, with 75.51% (15-44 years), 20.40% (14 years), and 4.08% (>45 years) being the most common.*

#### **CONCLUSION:**

*It was concluded from this study that epidural hematoma determined by computed tomography scan brain is more frequent in middle age.*

**KEYWORDS:** Road Traffic Accidents, Head Trauma, Epidural Hematoma

#### **How to cite this article:**

Amir S, Noman MA, Ayub S. Epidural Hematoma in Different Ages Due to Road Traffic Accidents on Computed Tomography Scan Brain. J Gandhara Med Dent Sci. 2022;9(2): 13-16

#### **Correspondence**

<sup>1</sup>Sohail Amir, Assistant Professor, Department of Neurosurgery, Hayatabad Medical Complex, Peshawar.  
☎: +92-332-5723653

✉: [dr.sohailamir@gmail.com](mailto:dr.sohailamir@gmail.com)

<sup>2</sup>Associate Professor, Department of Neurosurgery, Hayatabad Medical Complex, Peshawar.

<sup>3</sup>Professor and HOD, Neurosurgery, Department of Neurosurgery, Hayatabad Medical Complex, Peshawar.

#### **INTRODUCTION:**

The leading cause of death in our society is traumatic brain injury (TBI) secondary to road traffic accidents. TBI causes multiple neurological problems and thus increases

morbidity and mortality<sup>1</sup>. Every year, 403 out of every 100,000 people in the United States visit an emergency room due to automobile accidents that result in head trauma<sup>2</sup>. In our country, the fatality rate from traumatic brain damage is estimated to be around 15%<sup>3</sup>. Traumatic brain injury has a significant impact on the physical, mental, and emotional health of individuals, putting additional strain on the community. The consequences of closed head injuries are extremely unpleasant and painful for patients who arrive at the hospital<sup>4,5</sup>. Penetrating and closed head injuries are the two types of head injuries. The skull is broken in penetrating injury, while it is not broken in

closed injury. Head injuries cause blood to accumulate, generating hematomas in various locations<sup>6</sup>. The presence of pooled blood between the skull and the outer Dura layer, which is frequently associated with skull fracture, is known as epidural hematoma. Patients with decreased degree of consciousness, fits, vomiting, ipsilateral dilated pupil, and decreased movement on one side of the body present clinically. Patients with signs of high intracranial pressure and internal bleeding are selected for CT scan due to skull fracture<sup>7,8</sup>. The goal of this study was to detect cases of epidural hematoma in people of all ages that had occurred because of motor vehicle accidents and were diagnosed by CT scan brain, and to treat them early in order to prevent morbidity and mortality. As a result, we can reduce the prevalence of disease in the community.

#### METHODOLOGY:

This was a descriptive cross-sectional study conducted in the emergency department of Hayatabad Medical Complex in Peshawar. This study included 460 subjects of head injury caused by road traffic incidents. Simple random sampling was used as a sample approach. All of these individuals had a CT scan of their brains without contrast. After receiving informed verbal consent, a multi slice CT scan machine was employed, and demographic information as well as CT brain findings was recorded onto a sheet. We divided all people with brain injuries into three age categories in our study: under 14 years, 15 to 44 years, and over 45 years. Excel and SPSS 20 were used to analyze the information gathered. The mean, standard deviation, and charts were used to present the quantitative and qualitative variables. Patients with closed head injuries from road traffic accidents of both genders were included, while those without head injuries and those with bleeding disorders were omitted.

#### RESULTS:

A total of 460 patients participated in the trial, with 196 (42.60%) having an epidural hematoma and 264 (57.39%) having none. Males made up 152 (77.55%) and females made up 44 (32.3%) of the 196 epidural hematoma cases, with a mean age of 19 years and a range of 2-55±9.59 years (Table 1). All

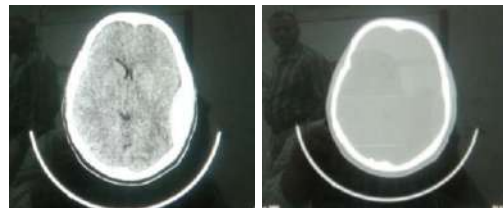
of the people who had a head injury were divided into three groups. There were 40 (20.40%) epidural hematomas in group I (under 14 years), 148 (75.51%) in group II (15 to 44 years), and 8 (4.08%) in group III (beyond 45 years) (Table 2).

**Table 1: Gender Wise Frequency of Epidural Hematoma**

Gender	Frequency	Percentage
Female	44	32.3%
Male	152	77.55%
Total	196	100.0%

**Table 2: Frequency of Epidural Hematoma in Different Age Groups**

Age Groups	Frequency	Percentage
≤14	40	20.40%
15-44	148	75.51%
≥45	8	4.08%
Total	196	100%



**Figure 1: CT Scan Brain Axial View Showing Epidural Hematoma in Left Parietal Lobe**

#### DISCUSSION:

TBI is most caused by car accidents, and men are disproportionately affected since they are more actively involved in daily activities. CT is one of the most essential modalities since it is less expensive, faster, and more generally available, and it is an important diagnostic tool for many brain hematomas<sup>9,10</sup>. The most common reports of epidural hematoma were from middle-aged adults who had sustained head injuries, which is consistent with international studies. Studies reported,<sup>11-13</sup> that males had a higher frequency of head trauma than females, which is consistent with our findings. Epidural hematomas were found in 196 patients (42.60%), while no epidural hematomas were found in 264 patients (57.39%). Males accounted for 152 (77.55%) of the 196 epidural hematoma cases, while females accounted for 44 (22.45%), with an average age of 19 years and a range of 2-55±9.59 years. A study conducted in India,<sup>14</sup> and Pakistan,<sup>15</sup> also found similar results. This is due to the fact that in our traditional culture and society, boys of this age group drive more than girls, rendering them more

vulnerable to head injuries. The frequency of epidural hematoma in our study was 75.51% (15-44 years), 20.40% (14 years), and 4.08% (>45 years), which is similar to the findings of Sameer C et al<sup>16</sup>, Arfat M et al<sup>17</sup> and Ogolo DE et al<sup>18</sup>

#### LIMITATIONS:

Our study has several limitations. Foremost is the patient-selection bias intrinsic to all retrospective studies. Specifically, the decisions to obtain and interpret CT scans in this study were made by the neurosurgeons involved in the care of the individual patient.

#### CONCLUSION:

This study found that epidural hematoma, as measured by a computed tomography scan of the brain, is more common in middle age and that males are more affected by head injuries than females.

**CONFLICT OF INTEREST:** None

**FUNDING SOURCES:** None

#### REFERENCES:

1. Davanzo JR, Sieg EP, Timmons SD. Management of traumatic brain injury. *Surg Clin North Am.* 2017;97(6):1237-53.
2. Riaz MA, Hussain A, Rehman H, Riaz MA, Mughal IA. Frequency of epidural hematoma in different ages due to road traffic accidents on computed tomography scan brain. *Prof Med J.* 2019;26(9):1576-9.
3. Aromatario M, Torsello A, D'errico S, Bertozzi G, Sessa F, Cipolloni L, et al. Traumatic epidural and subdural hematoma: epidemiology, outcome, and dating. *Medicina.* 2021;57(2):1-16.
4. Akanji AO, Akinola RA, Balogun BO, Akano AO, Atalabi OM, Akinkunmi MA, et al. Computerized tomography scan and head injury: the experience in a tertiary hospital in Nigeria: a cross sectional study. *Med Pract Rev.* 2015;6(1):1-15.
5. Shankar K, Kumar M, Anand K. A clinical analysis of outcome in management of head injury in patients with highway road accidents. *Int J Res Med Sci.* 2017;4(6):2079-83.
6. McAllister TW, Zafonte R, Jain S, Flashman LA, George MS, Grant GA, He F, Lohr JB, Andaluz N, Summerall L, Paulus MP. Randomized placebo-controlled trial of methylphenidate or galantamine for persistent emotional and cognitive symptoms associated with PTSD and/or traumatic brain injury. *Neuropsychopharmacology.* 2016 Apr;41(5):1191-8.
7. Siddique U, Gul H, Nawab K, Roghani IS, Afridi Z, Dawar NA. Intracranial hemorrhage in patients with head trauma on computed tomography scan. *Pak J Radiol.* 2016;26(3):189-97.
8. Aurangzeb A, Afridi EA, Khan SA, Muhammad G, Ihsan A, Hussain I, et al. Frequency of extradural hematoma in patients with linear skull fracture. *J Ayub Med Coll Abbottabad.* 2015;27(2):314-7.
9. Obanife HO, Nasiru IJ, Ogunleye OO, Ahmad M, Otokpa EJ, Shehu BB. Severity and predictors of outcome of motorcycle-associated head injury: an experience from a regional neurosurgery centre in northern Nigeria. *World Neurosurg.* 2021.
10. Anuradha B, Pasam KL, Rani KR, Rani BS, Rao KS. Role of CT in localising the injury to the particular intracranial compartment in patients with craniocerebral trauma. *J Evidence Based Med Healthcare.* 2016;3(91):4981-6.
11. Sidpra J, Ong J, Birch W, Mankad K. Skull fractures in abusive head trauma: a single centre experience and review of the literature. *Child Nerv Syst.* 2021;37(3):919-29.
12. Williams V, Jayashree M, Bansal A, Baranwal A, Nallasamy K, Singhi SC, et al. Spontaneous intracranial haemorrhage in children-intensive care needs and predictors of in-hospital mortality: a 10-year single-centre experience. *Child Nerv Syst.* 2019;35(8):1371-9.
13. Kulesza B, Mazurek M, Rams L,

- Nogalski A. Acute epidural and subdural hematomas after head injury: clinical distinguishing features. *Indian J Surg.* 2020;83(1):96-104.
14. Amir A, Khalil S, Huda H, Fak M. Road traffic injuries among drivers and pillion riders using two-wheeler motorized vehicle in Western Uttar Pradesh. *J Clin Diagn Res.* 2018;12(8).
15. Riaz MA, Riaz MA, Tabussam S, Rehman H. Frequency of subdural hematoma in different ages due to motor vehicle mishaps on computed tomography scan brain. *Pak J Med Health Sci.* 2018;12(4):1318-20.
16. Sameer C, Joshi H, Gaurav J, Kashmir S. Outcome of head injury patients based on computed tomography (CT) scan findings in a tertiary care hospital: a cross-sectional study. *Int J Contemp Med Res.* 2016;3(2):610-2.
17. Arfat M, Zahiruddin M, Yadav Y, Brig T, Prabhakar V. Evaluation of epidemiological trends and severity of traumatic brain injury using multi-detector computed tomography scanner in Uttar Pradesh University of Medical Sciences Hospital. *OMICS J Radiol.* 2017;6(254):2.
18. Ogolo DE, Ibe MO. Determinants of outcome in traumatic head injuries: a south east Nigeria experience. *World Neurosurg.* 2021;149:e386-91.

#### CONTRIBUTORS

1. **Sohail Amir** - Concept & Design; Data Acquisition
2. **Muhammad Ali Noman** - Data Analysis/Interpretation; Drafting Manuscript
3. **Shahid Ayub** - Critical Revision; Supervision; Final Approval